

11 FLOOR PLANS OF RESIDENTIAL PROPERTIES IN THE PHASE

期數的住宅物業的樓面平面圖

	Tower 座數	Floor 樓層	Flat 單位					
			D	E	F	G	H	J
The thickness of the floor slabs (excluding plaster) of each residential property (mm) 每個住宅物業的樓板(不包括灰泥)的厚度(毫米)	Tower 3 第3座	1/F 1樓	150	150	150	150	150	150
The floor-to-floor height (refers to the height between the top surface of the structural slab of a floor and the top surface of the structural slab of its immediate upper floor) of each residential property (mm) 每個住宅物業的層與層之間的高度(指該樓層之石屎地台面與上一層石屎地台面之高度距離)(毫米)			3150, 3325#, 3425#, 3600#, 3650#	3150, 3325#, 3425#, 3600#, 3650#	3150, 3325#, 3425#, 3600#, 3650#	3150, 3325#, 3425#, 3375#, 3600#, 3650#	3150, 3325#, 3425#, 3600#, 3650#	3150, 3325#, 3425#, 3600#, 3650#

Inclusive of the sunken depth of the sunken slab on the floor of this floor (500mm)

The internal areas of the residential properties on the upper floors will generally be slightly larger than those on the lower floors because of the reducing thickness of the structural walls on the upper floors. (Note: Not applicable to the Phase)

The dimensions in the floor plans are all structural dimensions in millimetre.

Please refer to the first page of the section "Floor Plans of Residential Properties in the Phase" for legend for the terms and abbreviations shown on the floor plan.

包括本層地台跌級樓板之跌級深度 (500毫米)

因住宅物業的較高樓層的結構牆的厚度遞減，較高樓層的內部面積，一般比較低樓層的內部面積稍大。(註：不適用於期數)

樓面平面圖之尺規所列數字為以毫米標示之建築結構尺寸。

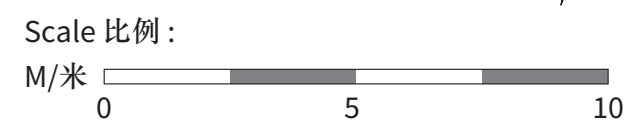
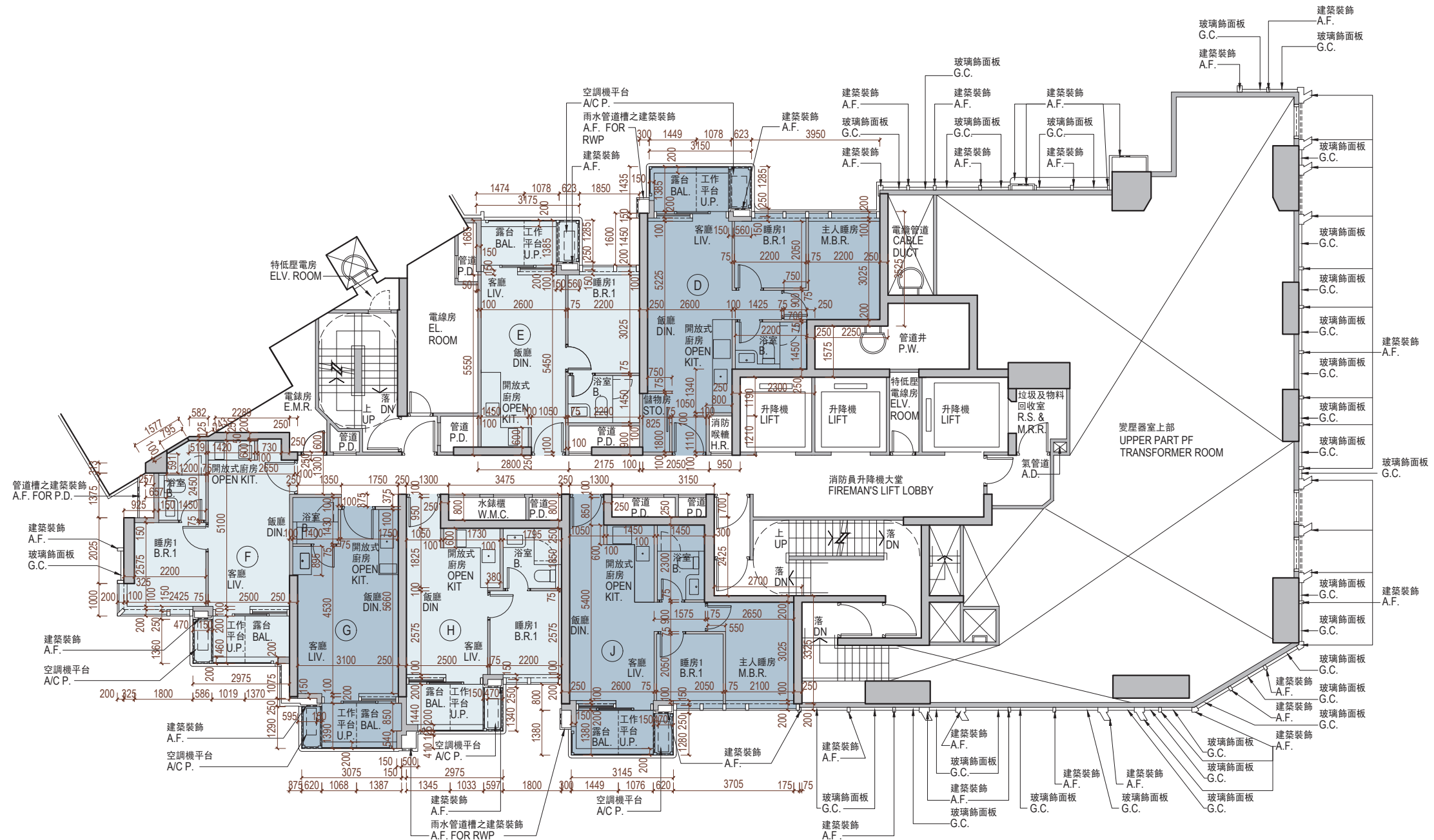
樓面平面圖中顯示之名詞及簡稱之圖例請參閱「期數的住宅物業的樓面平面圖」一節的首頁。

11 FLOOR PLANS OF RESIDENTIAL PROPERTIES IN THE PHASE

期數的住宅物業的樓面平面圖

TOWER 3
第3座

2/F
2樓



11 FLOOR PLANS OF RESIDENTIAL PROPERTIES IN THE PHASE

期數的住宅物業的樓面平面圖

	Tower 座數	Floor 樓層	Flat 單位					
			D	E	F	G	H	J
The thickness of the floor slabs (excluding plaster) of each residential property (mm) 每個住宅物業的樓板(不包括灰泥)的厚度(毫米)	Tower 3 第3座	2/F 2樓	150	150	150	150	150	150
The floor-to-floor height (refers to the height between the top surface of the structural slab of a floor and the top surface of the structural slab of its immediate upper floor) of each residential property (mm) 每個住宅物業的層與層之間的高度(指該樓層之石屎地台面與上一層石屎地台面之高度距離)(毫米)			3150, 3150 [^] , 3150 [*] , 3150 ^{**}	3150, 3150 [^] , 3150 [*] , 3150 ^{**}	3150, 3150 [^] , 3150 [*] , 3150 ^{**}	3150, 3150 [^] , 3150 [*] , 3150 ^{**}	3150, 3150 [^] , 3150 [*] , 3150 ^{**}	3150, 3150 [^] , 3150 [*] , 3150 ^{**}

[^] inclusive of the sunken depth of the sunken slab on the floor of this floor (50mm)

^{*} inclusive of the sunken depth of the sunken slab on the floor of this floor (225mm)

^{^^} inclusive of the sunken depth of the sunken slab on the floor of this floor (275mm)

^{**} inclusive of the sunken depth of the sunken slab on the floor of this floor (325mm)

The internal areas of the residential properties on the upper floors will generally be slightly larger than those on the lower floors because of the reducing thickness of the structural walls on the upper floors. (Note: Not applicable to the Phase)

The dimensions in the floor plans are all structural dimensions in millimetre.

Please refer to the first page of the section "Floor Plans of Residential Properties in the Phase" for legend for the terms and abbreviations shown on the floor plan.

[^] 包括本層地台跌級樓板之跌級深度 (50毫米)

^{*} 包括本層地台跌級樓板之跌級深度 (225毫米)

^{^^} 包括本層地台跌級樓板之跌級深度 (275毫米)

^{**} 包括本層地台跌級樓板之跌級深度 (325毫米)

因住宅物業的較高樓層的結構牆的厚度遞減，較高樓層的內部面積，一般比較低樓層的內部面積稍大。(註：不適用於期數)

樓面平面圖之尺規所列數字為以毫米標示之建築結構尺寸。

樓面平面圖中顯示之名詞及簡稱之圖例請參閱「期數的住宅物業的樓面平面圖」一節的首頁。

11 FLOOR PLANS OF RESIDENTIAL PROPERTIES IN THE PHASE

期數的住宅物業的樓面平面圖

	Tower 座數	Floor 樓層	Flat 單位					
			D	E	F	G	H	J
The thickness of the floor slabs (excluding plaster) of each residential property (mm) 每個住宅物業的樓板(不包括灰泥)的厚度(毫米)	Tower 3 第3座	3/F 3樓	150	150	150	150	150	150
The floor-to-floor height (refers to the height between the top surface of the structural slab of a floor and the top surface of the structural slab of its immediate upper floor) of each residential property (mm) 每個住宅物業的層與層之間的高度(指該樓層之石屎地台面與上一層石屎地台面之高度距離)(毫米)			3150, 3150 [^] , 3150 [*] , 3150 ^{**}	3150, 3150 [^] , 3150 ^{**} , 3375 [*]	3150, 3150 [^] , 3150 [*] , 3150 ^{**}	3150, 3150 [^] , 3150 ^{**} , 3150 ^{^^}	3150, 3150 [^] , 3150 [*] , 3150 ^{**}	3150, 3150 [^] , 3150 [*] , 3150 ^{**}

[^] inclusive of the sunken depth of the sunken slab on the floor of this floor (50mm)

^{*} inclusive of the sunken depth of the sunken slab on the floor of this floor (225mm)

^{^^} inclusive of the sunken depth of the sunken slab on the floor of this floor (275mm)

^{**} inclusive of the sunken depth of the sunken slab on the floor of this floor (325mm)

The internal areas of the residential properties on the upper floors will generally be slightly larger than those on the lower floors because of the reducing thickness of the structural walls on the upper floors. (Note: Not applicable to the Phase)

The dimensions in the floor plans are all structural dimensions in millimetre.

Please refer to the first page of the section "Floor Plans of Residential Properties in the Phase" for legend for the terms and abbreviations shown on the floor plan.

[^] 包括本層地台跌級樓板之跌級深度 (50毫米)

^{*} 包括本層地台跌級樓板之跌級深度 (225毫米)

^{^^} 包括本層地台跌級樓板之跌級深度 (275毫米)

^{**} 包括本層地台跌級樓板之跌級深度 (325毫米)

因住宅物業的較高樓層的結構牆的厚度遞減，較高樓層的內部面積，一般比較低樓層的內部面積稍大。(註：不適用於期數)

樓面平面圖之尺規所列數字為以毫米標示之建築結構尺寸。

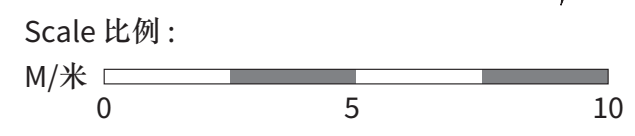
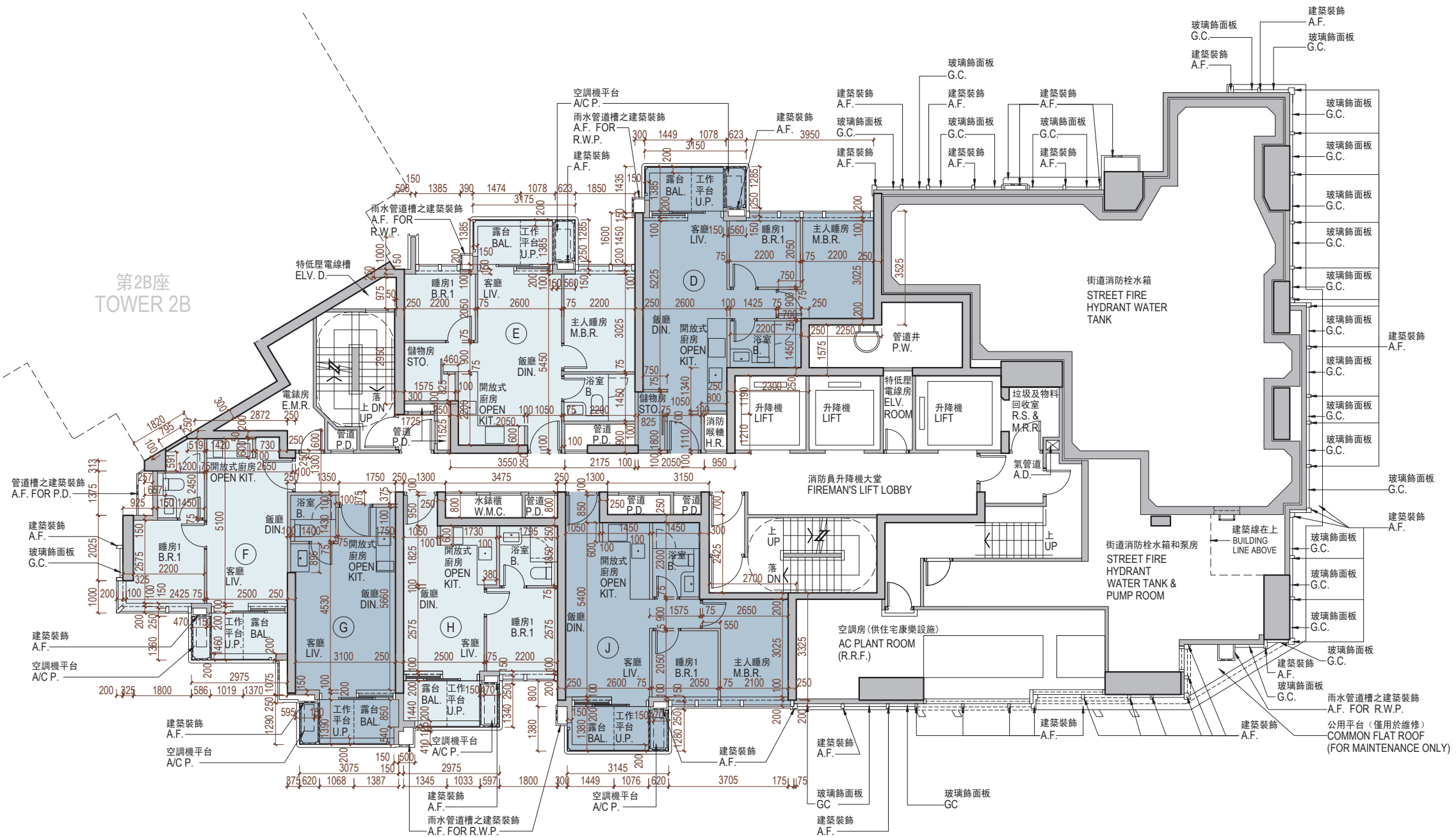
樓面平面圖中顯示之名詞及簡稱之圖例請參閱「期數的住宅物業的樓面平面圖」一節的首頁。

11 FLOOR PLANS OF RESIDENTIAL PROPERTIES IN THE PHASE

期數的住宅物業的樓面平面圖

TOWER 3
第3座

5/F
5樓



11 FLOOR PLANS OF RESIDENTIAL PROPERTIES IN THE PHASE

期數的住宅物業的樓面平面圖

	Tower 座數	Floor 樓層	Flat 單位					
			D	E	F	G	H	J
The thickness of the floor slabs (excluding plaster) of each residential property (mm) 每個住宅物業的樓板(不包括灰泥)的厚度(毫米)	Tower 3 第3座	5/F 5樓	150	150	150	150	150	150
The floor-to-floor height (refers to the height between the top surface of the structural slab of a floor and the top surface of the structural slab of its immediate upper floor) of each residential property (mm) 每個住宅物業的層與層之間的高度(指該樓層之石屎地台面與上一層石屎地台面之高度距離)(毫米)			3150, 3150 [^] , 3150 [*] , 3150 ^{**}	3150, 3150 [^] , 3150 ^{**} , 3150 ^{^^}	3150, 3150 [^] , 3150 [*] , 3150 ^{**}	3150, 3150 [^] , 3150 ^{**} , 3150 ^{^^}	3150, 3150 [^] , 3150 [*] , 3150 ^{**}	3150, 3150 [^] , 3150 [*] , 3150 ^{**}

[^] inclusive of the sunken depth of the sunken slab on the floor of this floor (50mm)

^{*} inclusive of the sunken depth of the sunken slab on the floor of this floor (225mm)

^{^^} inclusive of the sunken depth of the sunken slab on the floor of this floor (275mm)

^{**} inclusive of the sunken depth of the sunken slab on the floor of this floor (325mm)

The internal areas of the residential properties on the upper floors will generally be slightly larger than those on the lower floors because of the reducing thickness of the structural walls on the upper floors. (Note: Not applicable to the Phase)

The dimensions in the floor plans are all structural dimensions in millimetre.

Please refer to the first page of the section "Floor Plans of Residential Properties in the Phase" for legend for the terms and abbreviations shown on the floor plan.

[^] 包括本層地台跌級樓板之跌級深度 (50毫米)

^{*} 包括本層地台跌級樓板之跌級深度 (225毫米)

^{^^} 包括本層地台跌級樓板之跌級深度 (275毫米)

^{**} 包括本層地台跌級樓板之跌級深度 (325毫米)

因住宅物業的較高樓層的結構牆的厚度遞減，較高樓層的內部面積，一般比較低樓層的內部面積稍大。(註：不適用於期數)

樓面平面圖之尺規所列數字為以毫米標示之建築結構尺寸。

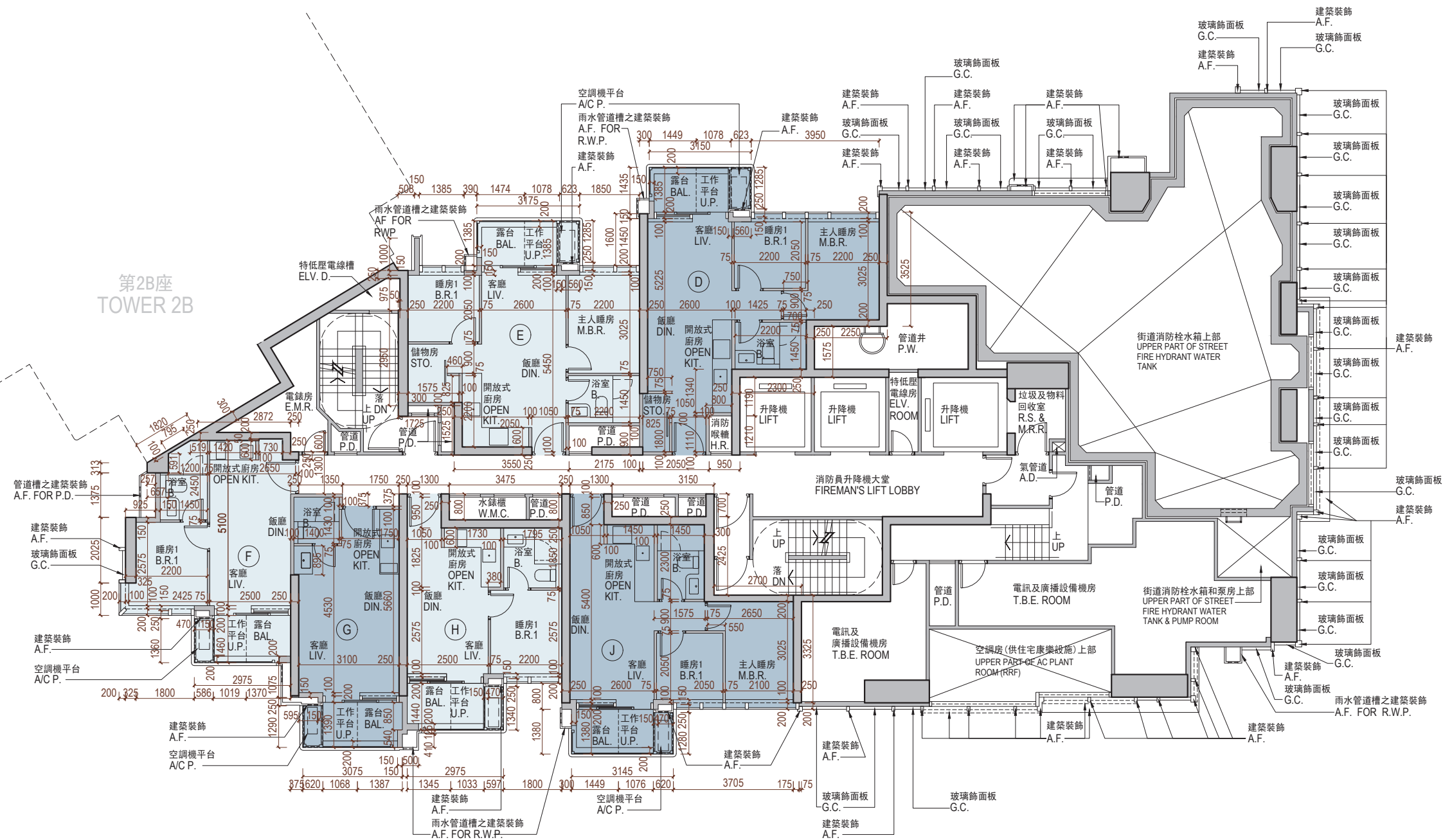
樓面平面圖中顯示之名詞及簡稱之圖例請參閱「期數的住宅物業的樓面平面圖」一節的首頁。

11 FLOOR PLANS OF RESIDENTIAL PROPERTIES IN THE PHASE

期數的住宅物業的樓面平面圖

TOWER 3
第3座

6/F
6樓



Scale 比例：
M/米 0 5 10

11 FLOOR PLANS OF RESIDENTIAL PROPERTIES IN THE PHASE

期數的住宅物業的樓面平面圖

	Tower 座數	Floor 樓層	Flat 單位					
			D	E	F	G	H	J
The thickness of the floor slabs (excluding plaster) of each residential property (mm) 每個住宅物業的樓板(不包括灰泥)的厚度(毫米)	Tower 3 第3座	6/F 6樓	150	150	150	150	150	150
The floor-to-floor height (refers to the height between the top surface of the structural slab of a floor and the top surface of the structural slab of its immediate upper floor) of each residential property (mm) 每個住宅物業的層與層之間的高度(指該樓層之石屎地台面與上一層石屎地台面之高度距離)(毫米)			3150, 3150 [^] , 3150 [*] , 3150 ^{**}	3150, 3150 [^] , 3150 ^{**} , 3150 ^{^^}	3150, 3150 [^] , 3150 [*] , 3150 ^{**}	3150, 3150 [^] , 3150 ^{**} , 3150 ^{^^}	3150, 3150 [^] , 3150 [*] , 3150 ^{**}	3150, 3150 [^] , 3150 [*] , 3150 ^{**}

[^] inclusive of the sunken depth of the sunken slab on the floor of this floor (50mm)

^{*} inclusive of the sunken depth of the sunken slab on the floor of this floor (225mm)

^{^^} inclusive of the sunken depth of the sunken slab on the floor of this floor (275mm)

^{**} inclusive of the sunken depth of the sunken slab on the floor of this floor (325mm)

The internal areas of the residential properties on the upper floors will generally be slightly larger than those on the lower floors because of the reducing thickness of the structural walls on the upper floors. (Note: Not applicable to the Phase)

The dimensions in the floor plans are all structural dimensions in millimetre.

Please refer to the first page of the section "Floor Plans of Residential Properties in the Phase" for legend for the terms and abbreviations shown on the floor plan.

[^] 包括本層地台跌級樓板之跌級深度 (50毫米)

^{*} 包括本層地台跌級樓板之跌級深度 (225毫米)

^{^^} 包括本層地台跌級樓板之跌級深度 (275毫米)

^{**} 包括本層地台跌級樓板之跌級深度 (325毫米)

因住宅物業的較高樓層的結構牆的厚度遞減，較高樓層的內部面積，一般比較低樓層的內部面積稍大。(註：不適用於期數)

樓面平面圖之尺規所列數字為以毫米標示之建築結構尺寸。

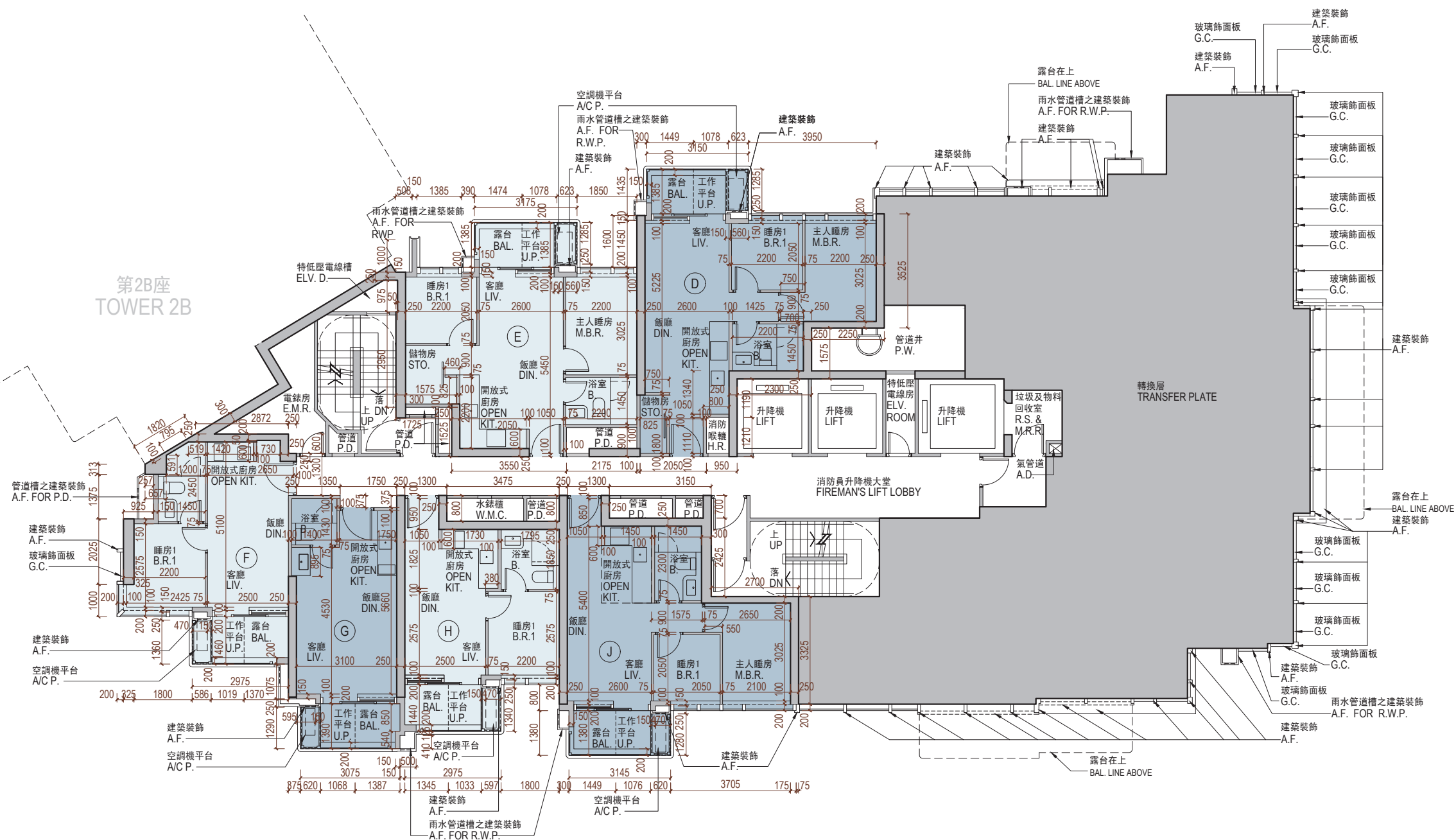
樓面平面圖中顯示之名詞及簡稱之圖例請參閱「期數的住宅物業的樓面平面圖」一節的首頁。

11 FLOOR PLANS OF RESIDENTIAL PROPERTIES IN THE PHASE

期數的住宅物業的樓面平面圖

TOWER 3
第3座

7/F
7樓



Scale 比例:
M/米 0 5 10

11 FLOOR PLANS OF RESIDENTIAL PROPERTIES IN THE PHASE

期數的住宅物業的樓面平面圖

	Tower 座數	Floor 樓層	Flat 單位					
			D	E	F	G	H	J
The thickness of the floor slabs (excluding plaster) of each residential property (mm) 每個住宅物業的樓板(不包括灰泥)的厚度(毫米)	Tower 3 第3座	7/F 7樓	150	150	150	150	150	150
The floor-to-floor height (refers to the height between the top surface of the structural slab of a floor and the top surface of the structural slab of its immediate upper floor) of each residential property (mm) 每個住宅物業的層與層之間的高度(指該樓層之石屎地台面與上一層石屎地台面之高度距離)(毫米)			3150, 3150^, 3150*, 3150**	3150, 3150^, 3150**, 3150^^	3150, 3150^, 3150*, 3150**	3150, 3150^, 3150**, 3150^^	3150, 3150^, 3150*, 3150**	3150, 3150^, 3150*, 3150**

^ inclusive of the sunken depth of the sunken slab on the floor of this floor (50mm)

* inclusive of the sunken depth of the sunken slab on the floor of this floor (225mm)

^^ inclusive of the sunken depth of the sunken slab on the floor of this floor (275mm)

** inclusive of the sunken depth of the sunken slab on the floor of this floor (325mm)

The internal areas of the residential properties on the upper floors will generally be slightly larger than those on the lower floors because of the reducing thickness of the structural walls on the upper floors. (Note: Not applicable to the Phase)

The dimensions in the floor plans are all structural dimensions in millimetre.

Please refer to the first page of the section "Floor Plans of Residential Properties in the Phase" for legend for the terms and abbreviations shown on the floor plan.

^ 包括本層地台跌級樓板之跌級深度 (50毫米)

* 包括本層地台跌級樓板之跌級深度 (225毫米)

^^ 包括本層地台跌級樓板之跌級深度 (275毫米)

** 包括本層地台跌級樓板之跌級深度 (325毫米)

因住宅物業的較高樓層的結構牆的厚度遞減，較高樓層的內部面積，一般比較低樓層的內部面積稍大。(註：不適用於期數)

樓面平面圖之尺規所列數字為以毫米標示之建築結構尺寸。

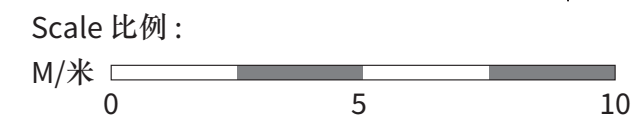
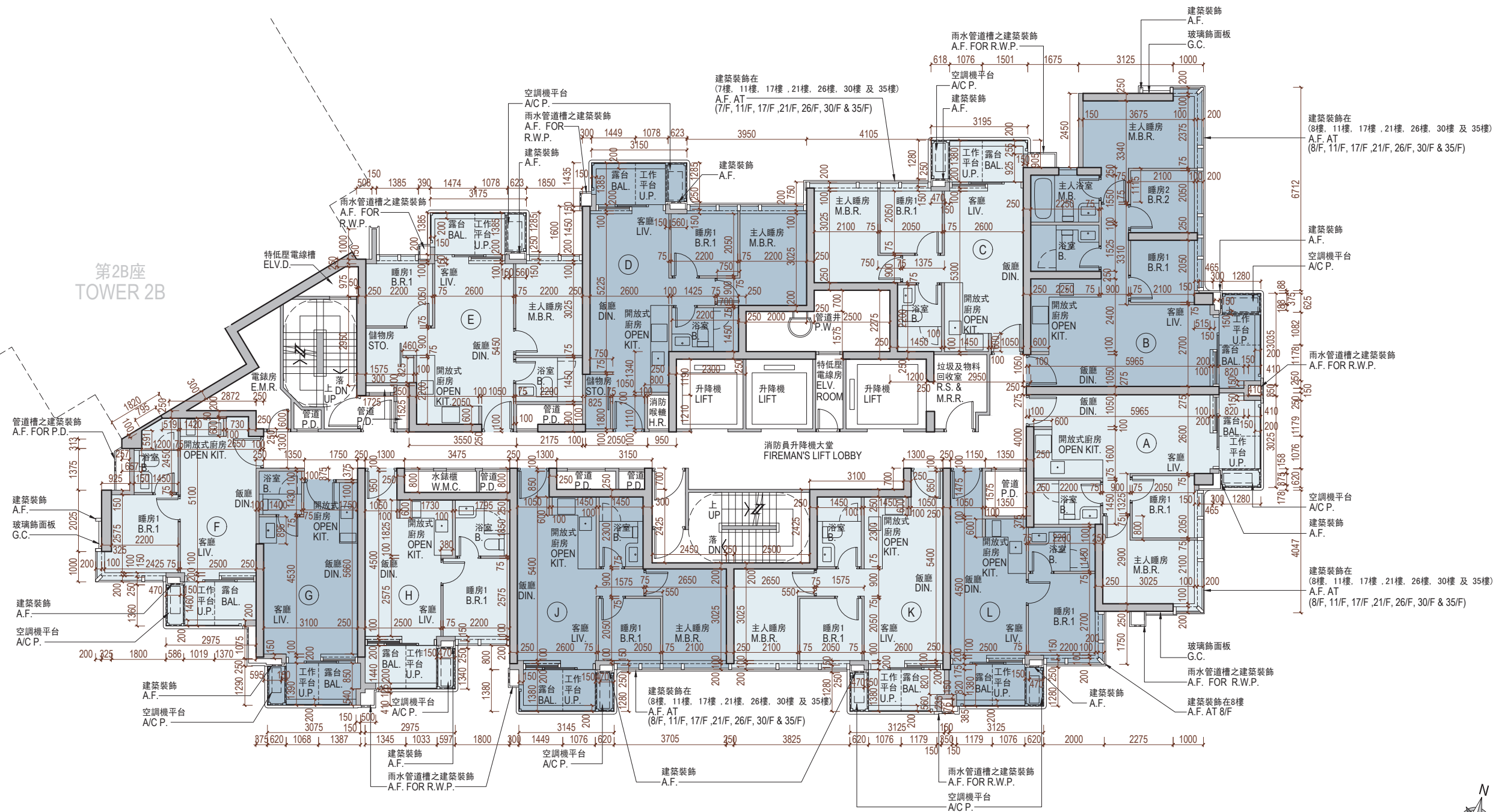
樓面平面圖中顯示之名詞及簡稱之圖例請參閱「期數的住宅物業的樓面平面圖」一節的首頁。

11 FLOOR PLANS OF RESIDENTIAL PROPERTIES IN THE PHASE

期數的住宅物業的樓面平面圖

TOWER 3
第3座

8/F-12/F, 15/F-23/F, 25/F-33/F & 35/F-37/F
8樓至12樓、15樓至23樓、25樓至33樓及35樓至37樓



11 FLOOR PLANS OF RESIDENTIAL PROPERTIES IN THE PHASE

期數的住宅物業的樓面平面圖

	Tower 座數	Floor 樓層	Flat 單位										
			A	B	C	D	E	F	G	H	J	K	L
The thickness of the floor slabs (excluding plaster) of each residential property (mm) 每個住宅物業的樓板(不包括灰泥)的厚度(毫米)	Tower 3 第3座	8/F 8樓	150	150	150	150	150	150	150	150	150	150	150
The floor-to-floor height (refers to the height between the top surface of the structural slab of a floor and the top surface of the structural slab of its immediate upper floor) of each residential property (mm) 每個住宅物業的層與層之間的高度(指該樓層之石屎地台面與上一層石屎地台面之高度距離)(毫米)			3150, 3225#, 3325#, 3500#, 3550#	3150, 3225#, 3325#, 3500#, 3550#	3150, 3225#, 3325#, 3500#, 3550#	3150, 3150 [^] , 3150 [*] , 3150 ^{**}	3150, 3150 [^] , 3150 ^{**} , 3150 ^{^^}	3150, 3150 [^] , 3150 [*] , 3150 ^{**}	3150, 3150 [^] , 3150 ^{**} , 3150 ^{^^}	3150, 3150 [^] , 3150 [*] , 3150 ^{**}	3150, 3150 [^] , 3150 [*] , 3150 ^{**}	3150, 3150 [^] , 3150 [*] , 3150 ^{**}	3150, 3225#, 3275#, 3500#, 3550#
The thickness of the floor slabs (excluding plaster) of each residential property (mm) 每個住宅物業的樓板(不包括灰泥)的厚度(毫米)		9/F-12/F, 15/F-23/F, 25/F-33/F & 35/F-37/F 9樓至12樓、15樓至23樓、25樓至33樓及35樓至37樓	150	150	150	150	150	150	150	150	150	150	150
The floor-to-floor height (refers to the height between the top surface of the structural slab of a floor and the top surface of the structural slab of its immediate upper floor) of each residential property (mm) 每個住宅物業的層與層之間的高度(指該樓層之石屎地台面與上一層石屎地台面之高度距離)(毫米)			3150, 3150 [^] , 3150 [*] , 3150 ^{**}	3150, 3150 [^] , 3150 [*] , 3150 ^{**}	3150, 3150 [^] , 3150 [*] , 3150 ^{**}	3150, 3150 [^] , 3150 [*] , 3150 ^{**}	3150, 3150 [^] , 3150 ^{**} , 3150 ^{^^}	3150, 3150 [^] , 3150 [*] , 3150 ^{**}	3150, 3150 [^] , 3150 ^{**} , 3150 ^{^^}	3150, 3150 [^] , 3150 [*] , 3150 ^{**}	3150, 3150 [^] , 3150 [*] , 3150 ^{**}	3150, 3150 [^] , 3150 [*] , 3150 ^{**}	3150, 3150 [^] , 3150 ^{**} , 3150 ^{^^}

- [^] inclusive of the sunken depth of the sunken slab on the floor of this floor (50mm)
- ^{*} inclusive of the sunken depth of the sunken slab on the floor of this floor (225mm)
- ^{^^} inclusive of the sunken depth of the sunken slab on the floor of this floor (275mm)
- ^{**} inclusive of the sunken depth of the sunken slab on the floor of this floor (325mm)
- [#] inclusive of the sunken depth of the sunken slab on the floor of this floor (400mm)

- [^] 包括本層地台跌級樓板之跌級深度 (50毫米)
- ^{*} 包括本層地台跌級樓板之跌級深度 (225毫米)
- ^{^^} 包括本層地台跌級樓板之跌級深度 (275毫米)
- ^{**} 包括本層地台跌級樓板之跌級深度 (325毫米)
- [#] 包括本層地台跌級樓板之跌級深度 (400毫米)

The internal areas of the residential properties on the upper floors will generally be slightly larger than those on the lower floors because of the reducing thickness of the structural walls on the upper floors. (Note: Not applicable to the Phase)

The dimensions in the floor plans are all structural dimensions in millimetre.

Please refer to the first page of the section "Floor Plans of Residential Properties in the Phase" for legend for the terms and abbreviations shown on the floor plan.

因住宅物業的較高樓層的結構牆的厚度遞減，較高樓層的內部面積，一般比較低樓層的內部面積稍大。(註：不適用於期數)

樓面平面圖之尺規所列數字為以毫米標示之建築結構尺寸。

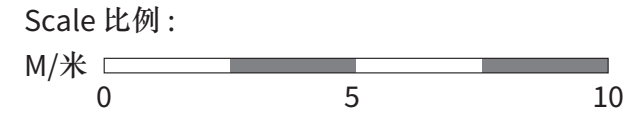
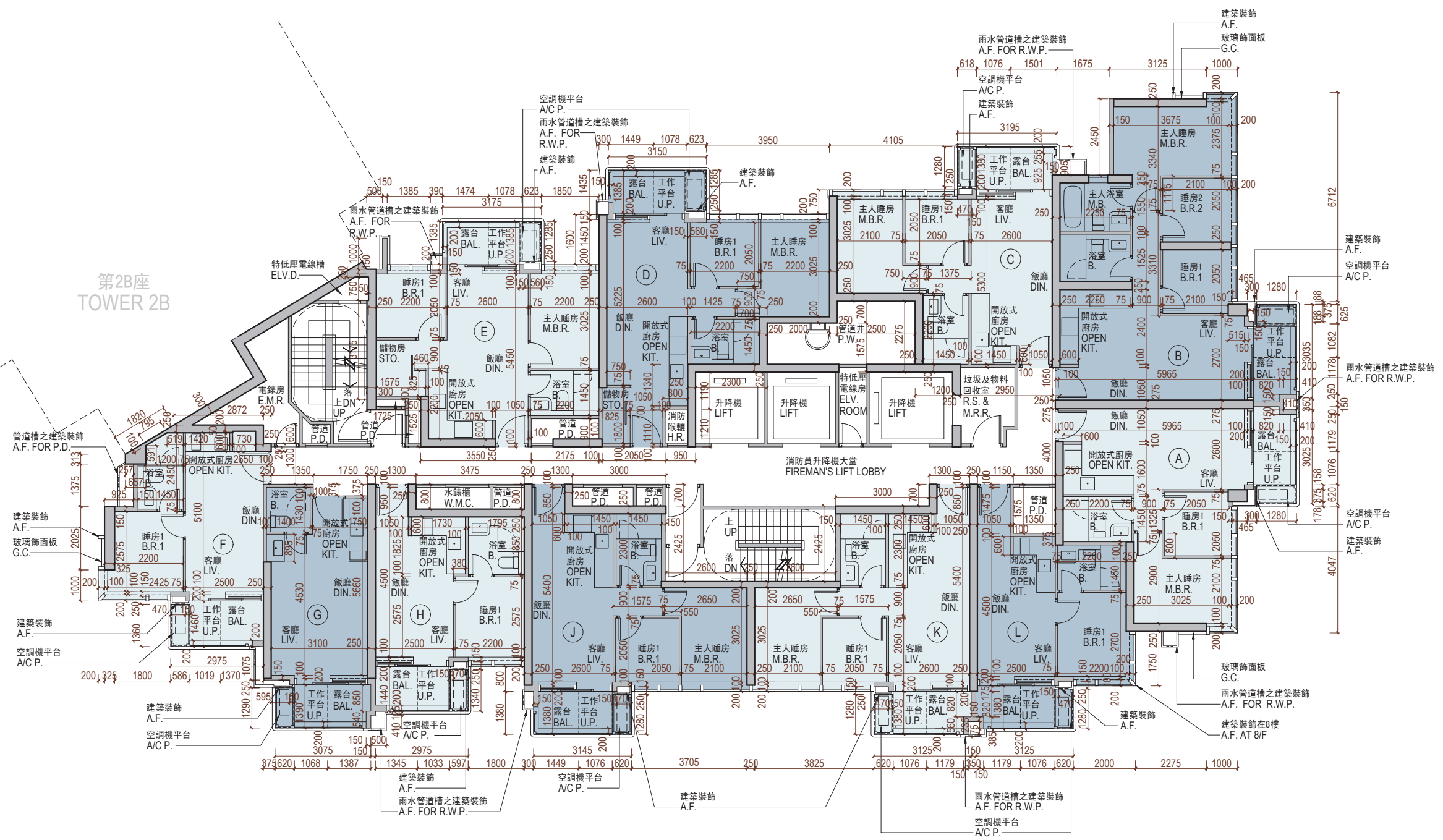
樓面平面圖中顯示之名詞及簡稱之圖例請參閱「期數的住宅物業的樓面平面圖」一節的首頁。

11 FLOOR PLANS OF RESIDENTIAL PROPERTIES IN THE PHASE

期數的住宅物業的樓面平面圖

TOWER 3
第3座

38/F
38樓



11 FLOOR PLANS OF RESIDENTIAL PROPERTIES IN THE PHASE

期數的住宅物業的樓面平面圖

	Tower 座數	Floor 樓層	Flat 單位											
			A	B	C	D	E	F	G	H	J	K	L	
The thickness of the floor slabs (excluding plaster) of each residential property (mm) 每個住宅物業的樓板(不包括灰泥)的厚度(毫米)			150, 450	150, 200, 450	150	150	150	150	150	150, 450	150, 450	150	150	150
The floor-to-floor height (refers to the height between the top surface of the structural slab of a floor and the top surface of the structural slab of its immediate upper floor) of each residential property (mm) 每個住宅物業的層與層之間的高度(指該樓層之石屎地台面與上一層石屎地台面之高度距離)(毫米)	Tower 3 第3座	38/F 38樓	3100, 3400, 3450 [^] , 3625 [*] , 3725 ^{**}	3050, 3100, 3150, 3375 ^{**} , 3400, 3450 [^] , 3625 [*] , 3725 ^{**}	3400, 3400 [^] , 3400 [*] , 3400 ^{**}	3400, 3400 [^] , 3400 [*] , 3400 ^{**}	3125, 3400, 3400 [^] , 3400 ^{^^} , 3400 ^{**}	3150, 3200 [^] , 3375 [*] , 3400, 3450 [^] , 3475 ^{**} , 3625 [*] , 3725 ^{**}	3100, 3400, 3450 [^] , 3675 ^{^^} , 3725 ^{**}	3100, 3400, 3450 [^] , 3625 [*] , 3725 ^{**}	3050, 3100, 3100 [^] , 3350, 3375 ^{**} , 3400, 3450 [^] , 3625 [*] , 3725 ^{**}	3075, 3125 [^] , 3350 ^{^^} , 3400, 3400 ^{**} , 3450 [^] , 3675 ^{^^} , 3725 ^{**}	3075, 3100, 3150, 3350, 3400, 3400 ^{**} , 3425 ^{**} , 3450 [^] , 3725 ^{**}	

[^] inclusive of the sunken depth of the sunken slab on the floor of this floor (50mm)

^{*} inclusive of the sunken depth of the sunken slab on the floor of this floor (225mm)

^{^^} inclusive of the sunken depth of the sunken slab on the floor of this floor (275mm)

^{**} inclusive of the sunken depth of the sunken slab on the floor of this floor (325mm)

The internal areas of the residential properties on the upper floors will generally be slightly larger than those on the lower floors because of the reducing thickness of the structural walls on the upper floors. (Note: Not applicable to the Phase)

The dimensions in the floor plans are all structural dimensions in millimetre.

Please refer to the first page of the section "Floor Plans of Residential Properties in the Phase" for legend for the terms and abbreviations shown on the floor plan.

[^] 包括本層地台跌級樓板之跌級深度 (50毫米)

^{*} 包括本層地台跌級樓板之跌級深度 (225毫米)

^{^^} 包括本層地台跌級樓板之跌級深度 (275毫米)

^{**} 包括本層地台跌級樓板之跌級深度 (325毫米)

因住宅物業的較高樓層的結構牆的厚度遞減，較高樓層的內部面積，一般比較低樓層的內部面積稍大。(註：不適用於期數)

樓面平面圖之尺規所列數字為以毫米標示之建築結構尺寸。

樓面平面圖中顯示之名詞及簡稱之圖例請參閱「期數的住宅物業的樓面平面圖」一節的首頁。

11 FLOOR PLANS OF RESIDENTIAL PROPERTIES IN THE PHASE

期數的住宅物業的樓面平面圖

	Tower 座數	Floor 樓層	Flat 單位				
			A	C	D	E	F
The thickness of the floor slabs (excluding plaster) of each residential property (mm) 每個住宅物業的樓板(不包括灰泥)的厚度(毫米)			150, 175, 200	150	150, 200	150, 200	150, 175, 200
The floor-to-floor height (refers to the height between the top surface of the structural slab of a floor and the top surface of the structural slab of its immediate upper floor) of each residential property (mm) 每個住宅物業的層與層之間的高度(指該樓層之石屎地台面與上一層石屎地台面之高度距離)(毫米)	Tower 3 第3座	39/F 39樓	3100, 3400, 3450^, 3450~, 3650##, 3700~~, 3725**, 3750~	3400, 3450^, 3625*, 3725**	3400, 3450^, 3625*, 3675*, 3725**	3400, 3450, 3500^, 3675^^, 3725^^, 3775**	3400, 3450^, 3650##, 3700~~, 3750~

^ inclusive of the sunken depth of the sunken slab on the floor of this floor (50mm)

* inclusive of the sunken depth of the sunken slab on the floor of this floor (225mm)

inclusive of the sunken depth of the sunken slab on the floor of this floor (250mm)

^^ inclusive of the sunken depth of the sunken slab on the floor of this floor (275mm)

** inclusive of the sunken depth of the sunken slab on the floor of this floor (325mm)

~~ inclusive of the sunken depth of the sunken slab on the floor of this floor (300mm)

~ inclusive of the sunken depth of the sunken slab on the floor of this floor (350mm)

^ 包括本層地台跌級樓板之跌級深度 (50毫米)

* 包括本層地台跌級樓板之跌級深度 (225毫米)

包括本層地台跌級樓板之跌級深度 (250毫米)

^^ 包括本層地台跌級樓板之跌級深度 (275毫米)

** 包括本層地台跌級樓板之跌級深度 (325毫米)

~~ 包括本層地台跌級樓板之跌級深度 (300毫米)

~ 包括本層地台跌級樓板之跌級深度 (350毫米)

The internal areas of the residential properties on the upper floors will generally be slightly larger than those on the lower floors because of the reducing thickness of the structural walls on the upper floors. (Note: Not applicable to the Phase)

The dimensions in the floor plans are all structural dimensions in millimetre.

Please refer to the first page of the section "Floor Plans of Residential Properties in the Phase" for legend for the terms and abbreviations shown on the floor plan.

因住宅物業的較高樓層的結構牆的厚度遞減，較高樓層的內部面積，一般比較低樓層的內部面積稍大。(註：不適用於期數)

樓面平面圖之尺規所列數字為以毫米標示之建築結構尺寸。

樓面平面圖中顯示之名詞及簡稱之圖例請參閱「期數的住宅物業的樓面平面圖」一節的首頁。

11 FLOOR PLANS OF RESIDENTIAL PROPERTIES IN THE PHASE

期數的住宅物業的樓面平面圖

	Tower 座數	Floor 樓層	Flat 單位	
			A	F
The thickness of the floor slabs (excluding plaster) of each residential property (mm) 每個住宅物業的樓板(不包括灰泥)的厚度(毫米)	Tower 3 第3座	ROOF 天台	Not applicable 不適用	
The floor-to-floor height (refers to the height between the top surface of the structural slab of a floor and the top surface of the structural slab of its immediate upper floor) of each residential property (mm) 每個住宅物業的層與層之間的高度(指該樓層之石屎地台面與上一層石屎地台面之高度距離)(毫米)				

The internal areas of the residential properties on the upper floors will generally be slightly larger than those on the lower floors because of the reducing thickness of the structural walls on the upper floors. (Note: Not applicable to the Phase)

The dimensions in the floor plans are all structural dimensions in millimetre.

Please refer to the first page of the section "Floor Plans of Residential Properties in the Phase" for legend for the terms and abbreviations shown on the floor plan.

因住宅物業的較高樓層的結構牆的厚度遞減，較高樓層的內部面積，一般比較低樓層的內部面積稍大。(註：不適用於期數)

樓面平面圖之尺規所列數字為以毫米標示之建築結構尺寸。

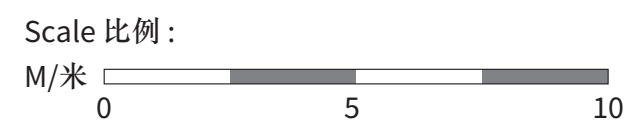
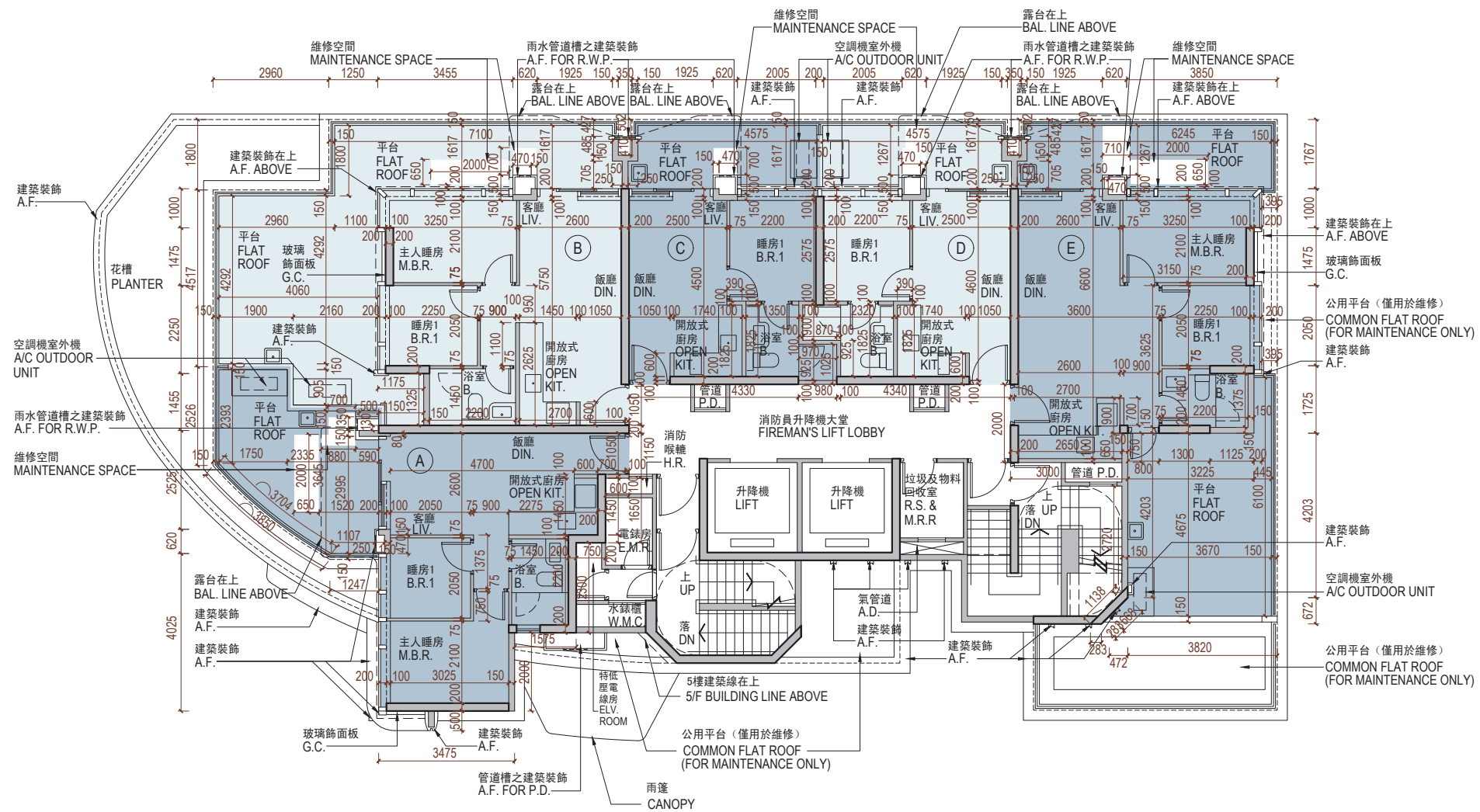
樓面平面圖中顯示之名詞及簡稱之圖例請參閱「期數的住宅物業的樓面平面圖」一節的首頁。

11 FLOOR PLANS OF RESIDENTIAL PROPERTIES IN THE PHASE

期數的住宅物業的樓面平面圖

TOWER 5
第5座

1/F
1樓



11 FLOOR PLANS OF RESIDENTIAL PROPERTIES IN THE PHASE

期數的住宅物業的樓面平面圖

	Tower 座數	Floor 樓層	Flat 單位				
			A	B	C	D	E
The thickness of the floor slabs (excluding plaster) of each residential property (mm) 每個住宅物業的樓板(不包括灰泥)的厚度(毫米)			150	150	150	150	150
The floor-to-floor height (refers to the height between the top surface of the structural slab of a floor and the top surface of the structural slab of its immediate upper floor) of each residential property (mm) 每個住宅物業的層與層之間的高度(指該樓層之石屎地台面與上一層石屎地台面之高度距離)(毫米)	Tower 5 第5座	1/F 1樓	3150, 3300#, 3600#, 3650#	3150, 3325#, 3425#, 3600#, 3650#	3150, 3325#, 3425#, 3600#, 3650#	3150, 3325#, 3425#, 3600#, 3650#	3150, 3325#, 3600#, 3650#

Inclusive of the sunken depth of the sunken slab on the floor of this floor (500mm)

The internal areas of the residential properties on the upper floors will generally be slightly larger than those on the lower floors because of the reducing thickness of the structural walls on the upper floors. (Note: Not applicable to the Phase)

The dimensions in the floor plans are all structural dimensions in millimetre.

Please refer to the first page of the section "Floor Plans of Residential Properties in the Phase" for legend for the terms and abbreviations shown on the floor plan.

包括本層地台跌級樓板之跌級深度 (500毫米)

因住宅物業的較高樓層的結構牆的厚度遞減，較高樓層的內部面積，一般比較低樓層的內部面積稍大。(註：不適用於期數)

樓面平面圖之尺規所列數字為以毫米標示之建築結構尺寸。

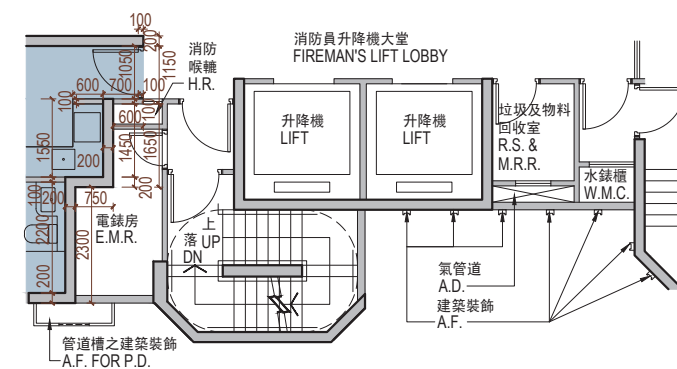
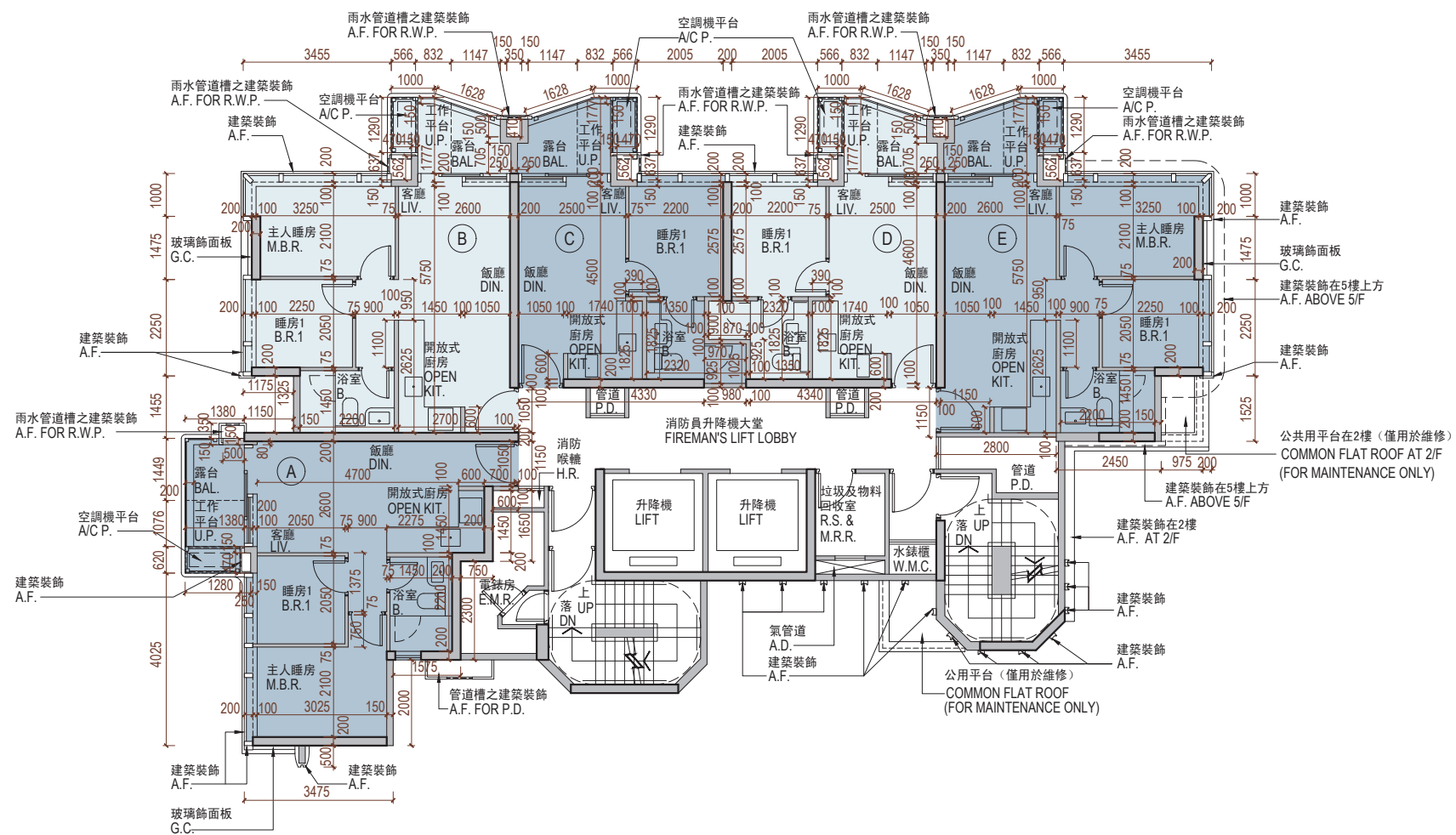
樓面平面圖中顯示之名詞及簡稱之圖例請參閱「期數的住宅物業的樓面平面圖」一節的首頁。

11 FLOOR PLANS OF RESIDENTIAL PROPERTIES IN THE PHASE

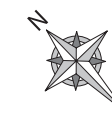
期數的住宅物業的樓面平面圖

TOWER 5
第5座

2/F-3/F & 5/F
2樓至3樓及5樓



5/F PART PLAN
5樓局部平面圖



Scale 比例:



11 FLOOR PLANS OF RESIDENTIAL PROPERTIES IN THE PHASE

期數的住宅物業的樓面平面圖

	Tower 座數	Floor 樓層	Flat 單位				
			A	B	C	D	E
The thickness of the floor slabs (excluding plaster) of each residential property (mm) 每個住宅物業的樓板(不包括灰泥)的厚度(毫米)	Tower 5 第5座	2/F-3/F 2樓至3樓	150	150	150	150	150
The floor-to-floor height (refers to the height between the top surface of the structural slab of a floor and the top surface of the structural slab of its immediate upper floor) of each residential property (mm) 每個住宅物業的層與層之間的高度(指該樓層之石屎地台面與上一層石屎地台面之高度距離)(毫米)			3150, 3150^, 3150~	3150, 3150^, 3150*, 3150**	3150, 3150^, 3150*, 3150**	3150, 3150^, 3150*, 3150**	3150, 3150^, 3150**
The thickness of the floor slabs (excluding plaster) of each residential property (mm) 每個住宅物業的樓板(不包括灰泥)的厚度(毫米)		150	150	150	150	150	
The floor-to-floor height (refers to the height between the top surface of the structural slab of a floor and the top surface of the structural slab of its immediate upper floor) of each residential property (mm) 每個住宅物業的層與層之間的高度(指該樓層之石屎地台面與上一層石屎地台面之高度距離)(毫米)		3400, 3400^, 3400~	3400, 3400^, 3400*, 3400**	3050, 3075, 3100^, 3275*, 3350, 3400, 3400^, 3400^, 3400**, 3450^, 3575*, 3625*, 3725**	3050, 3375**, 3400, 3400^, 3450^, 3575*, 3625*, 3725**	2800, 3100, 3150^, 3425**	

- ^ inclusive of the sunken depth of the sunken slab on the floor of this floor (50mm)
 * inclusive of the sunken depth of the sunken slab on the floor of this floor (225mm)
 ** inclusive of the sunken depth of the sunken slab on the floor of this floor (325mm)
 ~ inclusive of the sunken depth of the sunken slab on the floor of this floor (350mm)

- ^ 包括本層地台跌級樓板之跌級深度 (50毫米)
 * 包括本層地台跌級樓板之跌級深度 (225毫米)
 ** 包括本層地台跌級樓板之跌級深度 (325毫米)
 ~ 包括本層地台跌級樓板之跌級深度 (350毫米)

The internal areas of the residential properties on the upper floors will generally be slightly larger than those on the lower floors because of the reducing thickness of the structural walls on the upper floors. (Note: Not applicable to the Phase)

因住宅物業的較高樓層的結構牆的厚度遞減，較高樓層的內部面積，一般比較低樓層的內部面積稍大。(註：不適用於期數)

The dimensions in the floor plans are all structural dimensions in millimetre.

樓面平面圖之尺規所列數字為以毫米標示之建築結構尺寸。

Please refer to the first page of the section "Floor Plans of Residential Properties in the Phase" for legend for the terms and abbreviations shown on the floor plan.

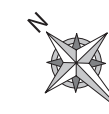
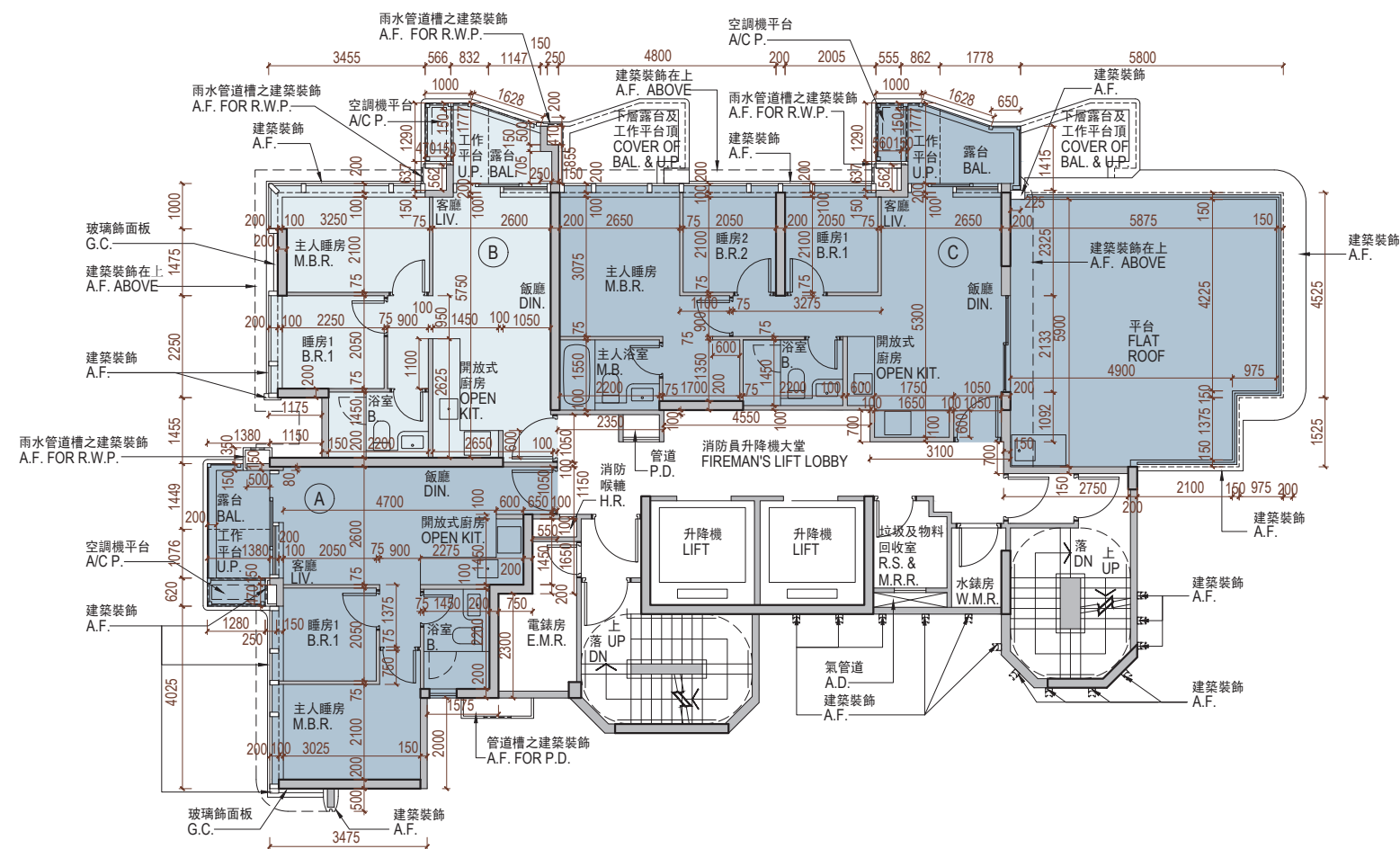
樓面平面圖中顯示之名詞及簡稱之圖例請參閱「期數的住宅物業的樓面平面圖」一節的首頁。

11 FLOOR PLANS OF RESIDENTIAL PROPERTIES IN THE PHASE

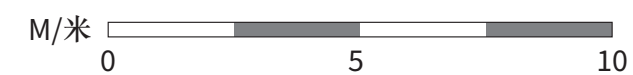
期數的住宅物業的樓面平面圖

TOWER 5
第5座

6/F
6樓



Scale 比例:



11 FLOOR PLANS OF RESIDENTIAL PROPERTIES IN THE PHASE

期數的住宅物業的樓面平面圖

	Tower 座數	Floor 樓層	Flat 單位		
			A	B	C
The thickness of the floor slabs (excluding plaster) of each residential property (mm) 每個住宅物業的樓板(不包括灰泥)的厚度(毫米)			150	150	150
The floor-to-floor height (refers to the height between the top surface of the structural slab of a floor and the top surface of the structural slab of its immediate upper floor) of each residential property (mm) 每個住宅物業的層與層之間的高度(指該樓層之石屎地台面與上一層石屎地台面之高度距離)(毫米)	Tower 5 第5座	6/F 6樓	3100, 3400, 3450^, 3750~	3400, 3450^, 3625*, 3725**	3400, 3425**, 3450^, 3450~, 3725**, 3750~

- ^ inclusive of the sunken depth of the sunken slab on the floor of this floor (50mm)
- * inclusive of the sunken depth of the sunken slab on the floor of this floor (225mm)
- ** inclusive of the sunken depth of the sunken slab on the floor of this floor (325mm)
- ~ inclusive of the sunken depth of the sunken slab on the floor of this floor (350mm)

The internal areas of the residential properties on the upper floors will generally be slightly larger than those on the lower floors because of the reducing thickness of the structural walls on the upper floors. (Note: Not applicable to the Phase)

The dimensions in the floor plans are all structural dimensions in millimetre.

Please refer to the first page of the section "Floor Plans of Residential Properties in the Phase" for legend for the terms and abbreviations shown on the floor plan.

- ^ 包括本層地台跌級樓板之跌級深度 (50毫米)
- * 包括本層地台跌級樓板之跌級深度 (225毫米)
- ** 包括本層地台跌級樓板之跌級深度 (325毫米)
- ~ 包括本層地台跌級樓板之跌級深度 (350毫米)

因住宅物業的較高樓層的結構牆的厚度遞減，較高樓層的內部面積，一般比較低樓層的內部面積稍大。(註：不適用於期數)

樓面平面圖之尺規所列數字為以毫米標示之建築結構尺寸。

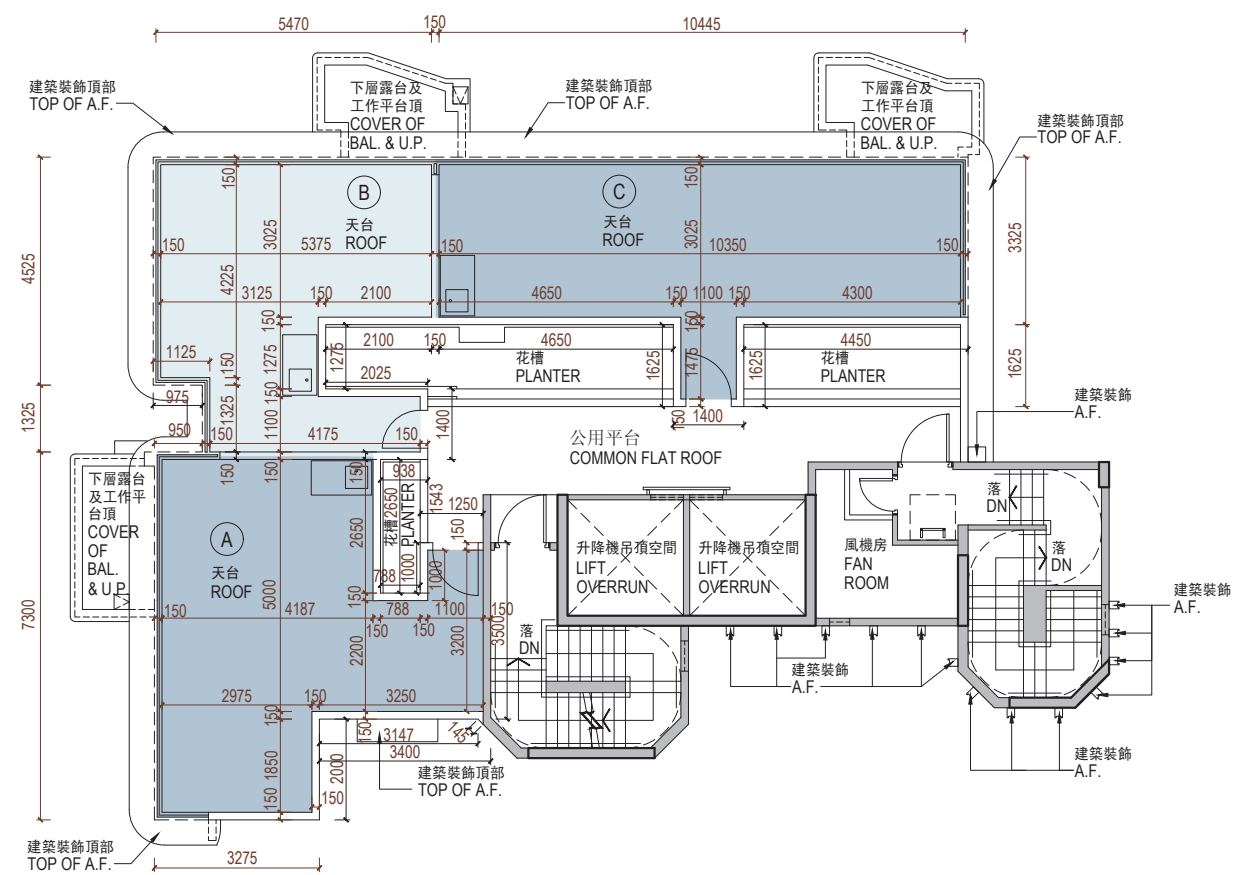
樓面平面圖中顯示之名詞及簡稱之圖例請參閱「期數的住宅物業的樓面平面圖」一節的首頁。

11 FLOOR PLANS OF RESIDENTIAL PROPERTIES IN THE PHASE

期數的住宅物業的樓面平面圖

TOWER 5
第5座

ROOF
天台



11 FLOOR PLANS OF RESIDENTIAL PROPERTIES IN THE PHASE

期數的住宅物業的樓面平面圖

	Tower 座數	Floor 樓層	Flat 單位		
			A	B	C
The thickness of the floor slabs (excluding plaster) of each residential property (mm) 每個住宅物業的樓板(不包括灰泥)的厚度(毫米)	Tower 5 第5座	Roof 天台	Not applicable 不適用		
The floor-to-floor height (refers to the height between the top surface of the structural slab of a floor and the top surface of the structural slab of its immediate upper floor) of each residential property (mm) 每個住宅物業的層與層之間的高度(指該樓層之石屎地台面與上一層石屎地台面之高度距離)(毫米)					

The internal areas of the residential properties on the upper floors will generally be slightly larger than those on the lower floors because of the reducing thickness of the structural walls on the upper floors. (Note: Not applicable to the Phase)

The dimensions in the floor plans are all structural dimensions in millimetre.

Please refer to the first page of the section "Floor Plans of Residential Properties in the Phase" for legend for the terms and abbreviations shown on the floor plan.

因住宅物業的較高樓層的結構牆的厚度遞減，較高樓層的內部面積，一般比較低樓層的內部面積稍大。(註：不適用於期數)

樓面平面圖之尺規所列數字為以毫米標示之建築結構尺寸。

樓面平面圖中顯示之名詞及簡稱之圖例請參閱「期數的住宅物業的樓面平面圖」一節的首頁。