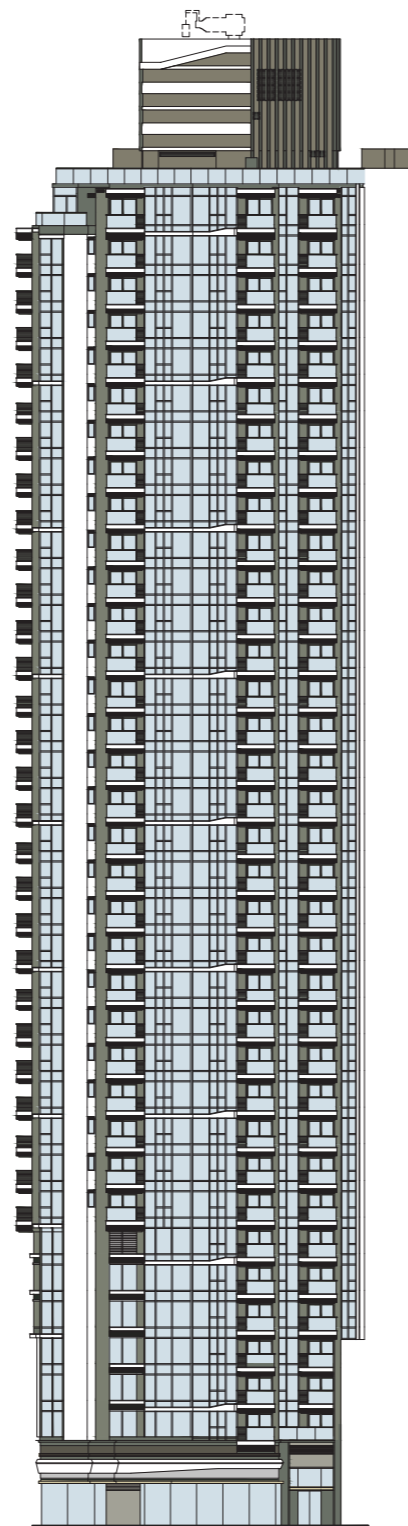


20 ELEVATION PLAN 立面圖

TOWER 3 - ELEVATION PLAN 1 & 2 第3座立面圖1及2

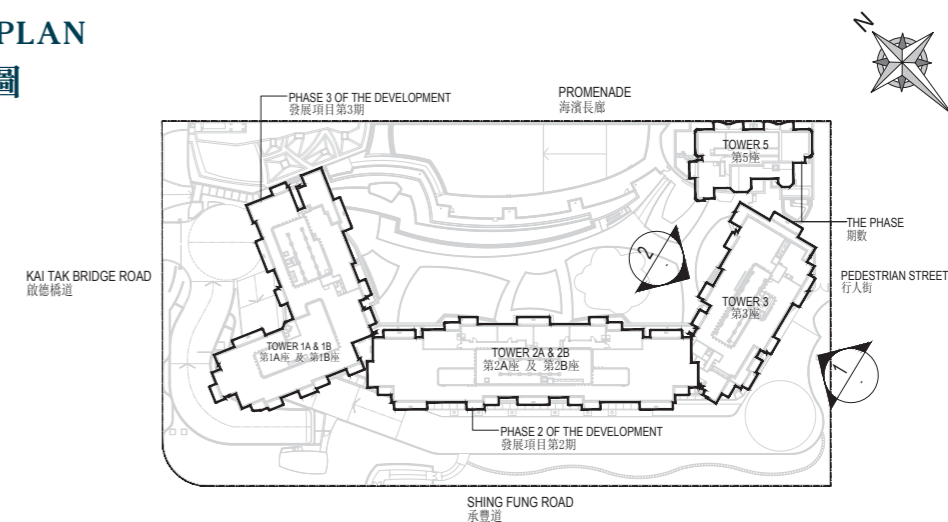


ELEVATION PLAN 1
立面圖1



ELEVATION PLAN 2
立面圖2

KEY PLAN 索引圖



Authorized Person for the Phase has certified that the elevations shown on these plans:

期數的認可人士證明本圖所顯示的立面：

(1) are prepared on the basis of the approved building plans for the Phase as of 7 November 2023; and

以2023年11月7日的情況為準的期數的經批准的建築圖則為基礎擬備；及

(2) are in general accordance with the outward appearance of the Phase.

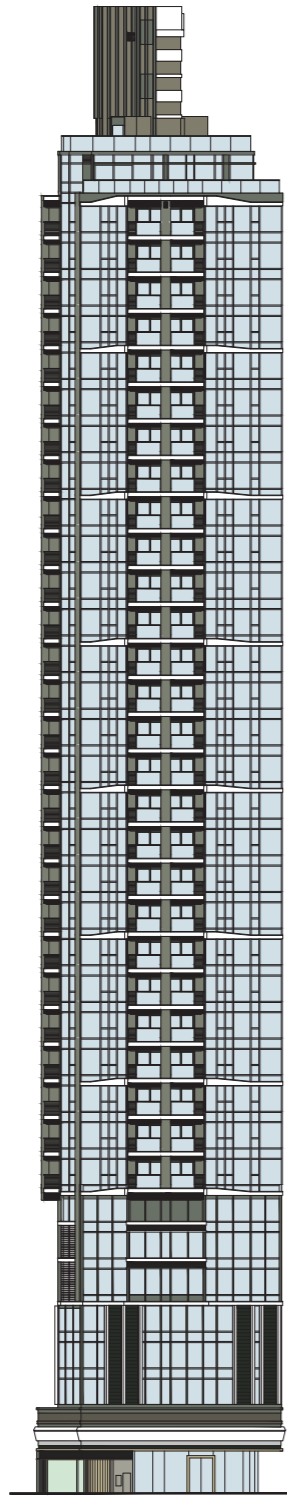
大致上與期數的外觀一致。

20 ELEVATION PLAN

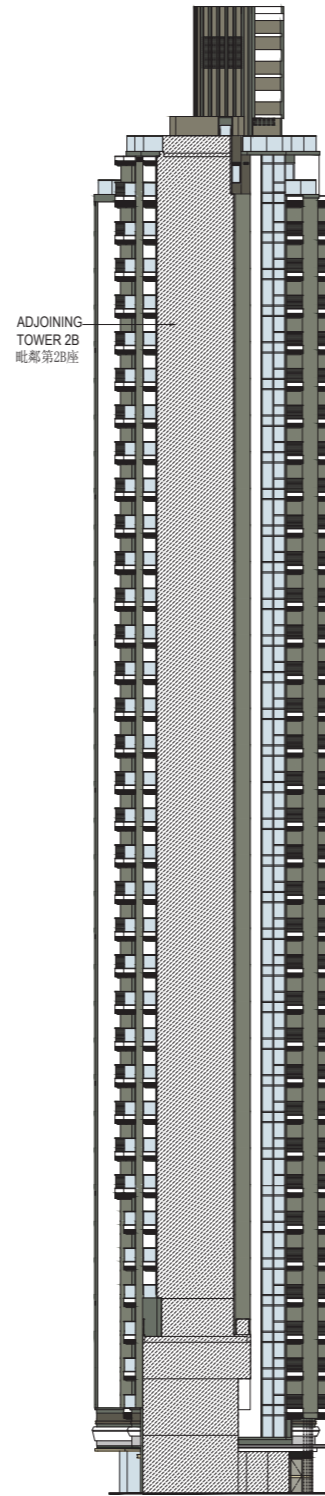
立面圖

TOWER 3 - ELEVATION PLAN 3 & 4

第3座立面圖3及4



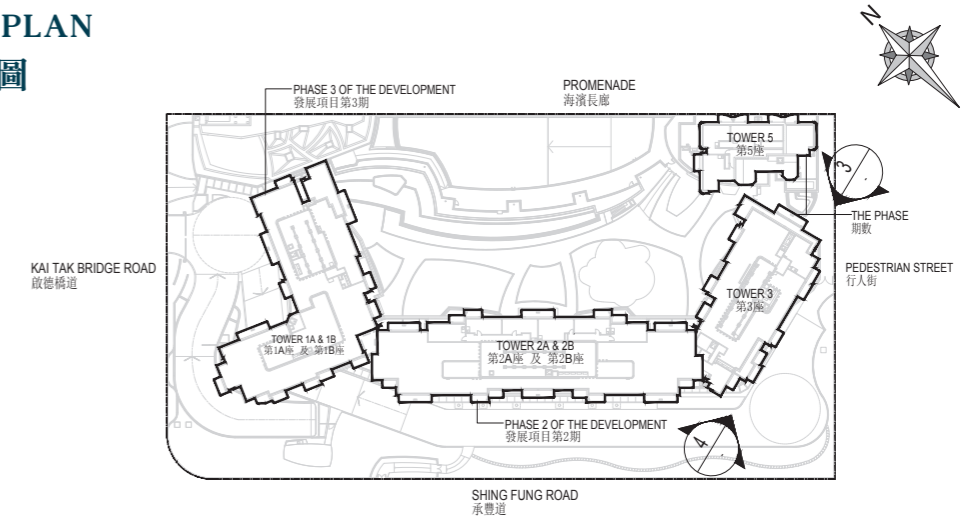
ELEVATION PLAN 3
立面圖3



ELEVATION PLAN 4
立面圖4

KEY PLAN

索引圖



Authorized Person for the Phase has certified that the elevations shown on these plans:

期數的認可人士證明本圖所顯示的立面：

- (1) are prepared on the basis of the approved building plans for the Phase as of 7 November 2023; and

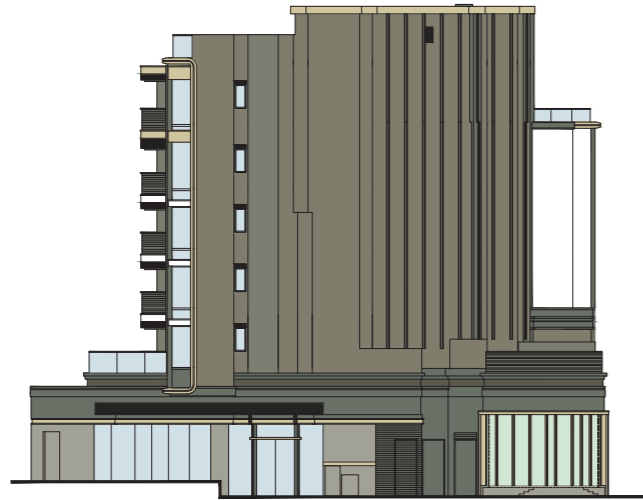
以2023年11月7日的情況為準的期數的經批准的建築圖則為基礎擬備；及

- (2) are in general accordance with the outward appearance of the Phase.

大致上與期數的外觀一致。

20 ELEVATION PLAN 立面圖

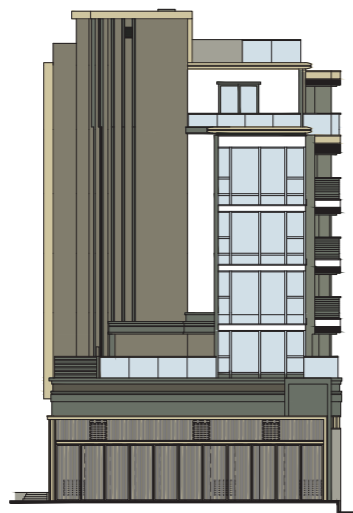
TOWER 5 - ELEVATION PLAN 1, 2, 3 & 4 第5座立面圖1、2、3及4



ELEVATION PLAN 1
立面圖1



ELEVATION PLAN 2
立面圖2

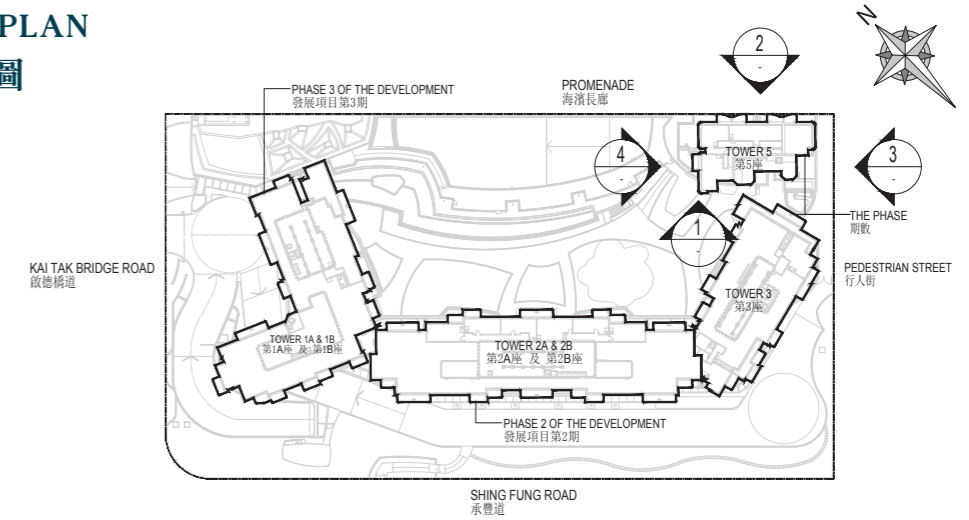


ELEVATION PLAN 3
立面圖3



ELEVATION PLAN 4
立面圖4

KEY PLAN 索引圖



Authorized Person for the Phase has certified that the elevations shown on these plans:

期數的認可人士證明本圖所顯示的立面：

(1) are prepared on the basis of the approved building plans for the Phase as of 7 November 2023; and

以2023年11月7日的情況為準的期數的經批准的建築圖則為基礎擬備；及

(2) are in general accordance with the outward appearance of the Phase.

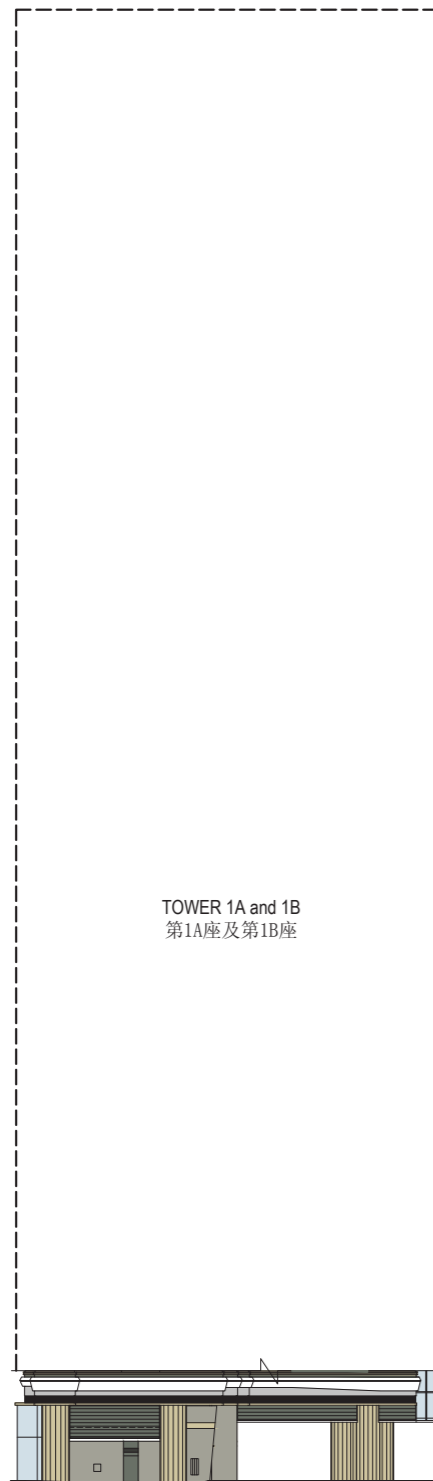
大致上與期數的外觀一致。

20 ELEVATION PLAN

立面圖

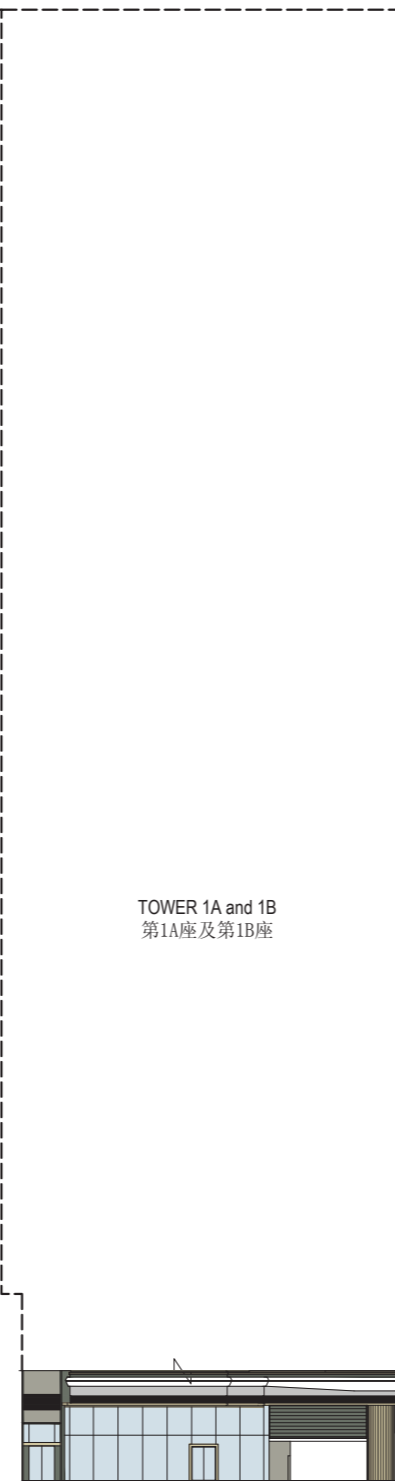
TOWER 1 PODIUM ELEVATION PLAN 1 & 2

第1座平台立面圖1及2



PODIUM ELEVATION PLAN 1
平台立面圖 1

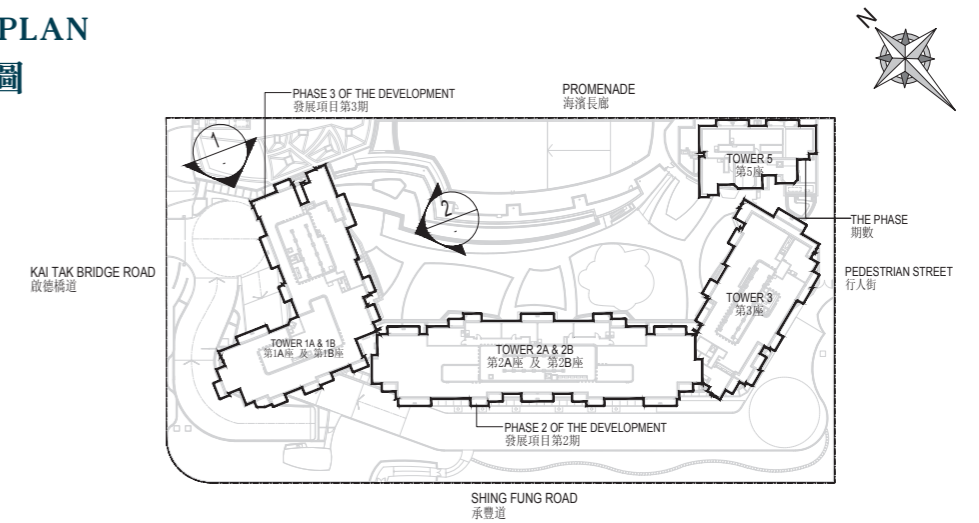
ADJOINING
TOWER 2A and 2B
毗鄰
第2A座及第2B座



PODIUM ELEVATION PLAN 2
平台立面圖 2

KEY PLAN

索引圖



Authorized Person for the Phase has certified that the elevations shown on these plans:

期數的認可人士證明本圖所顯示的立面：

- (1) are prepared on the basis of the approved building plans for the Phase as of 7 November 2023; and

以2023年11月7日的情況為準的期數的經批准的建築圖則為基礎擬備；及

- (2) are in general accordance with the outward appearance of the Phase.

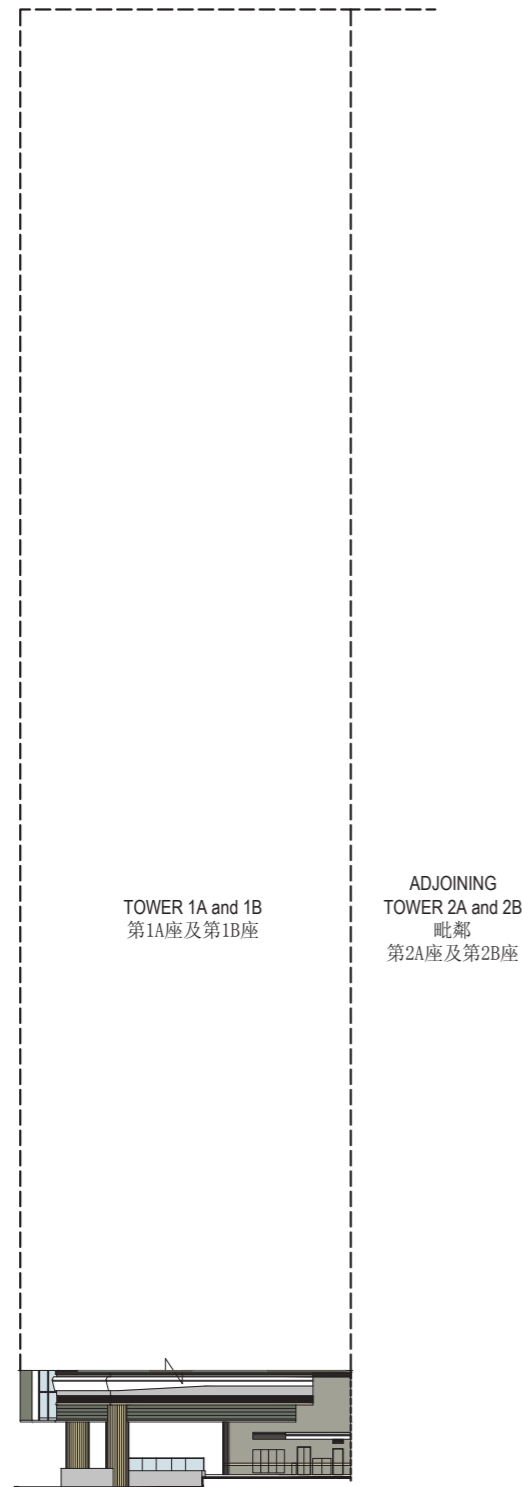
大致上與期數的外觀一致。

20 ELEVATION PLAN

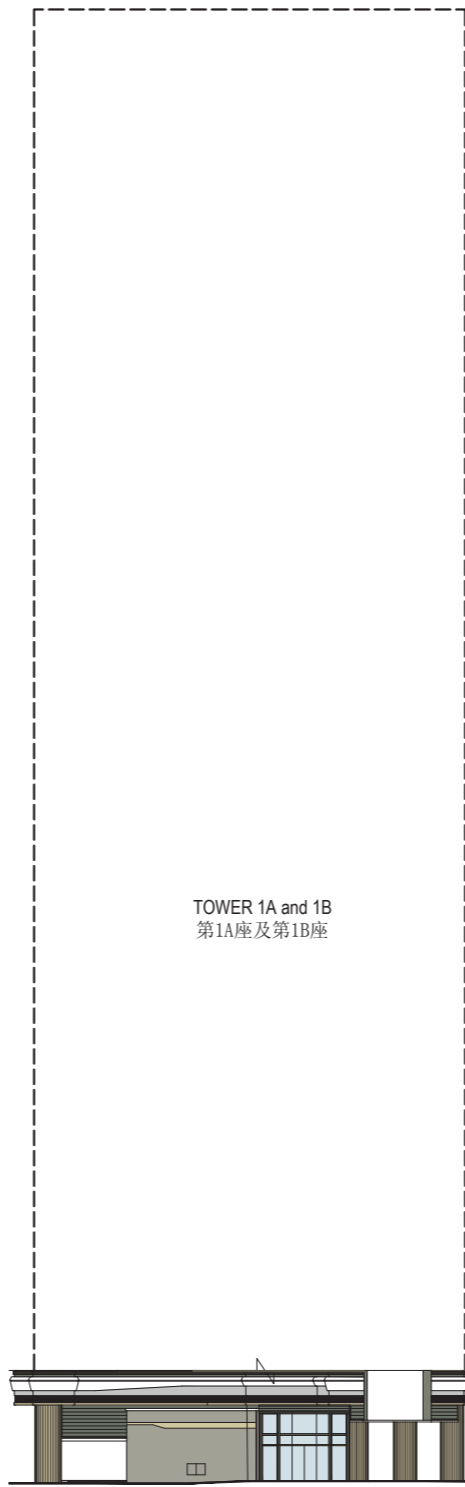
立面圖

TOWER 1 PODIUM ELEVATION PLAN 3 & 4

第1座平台立面圖3及4



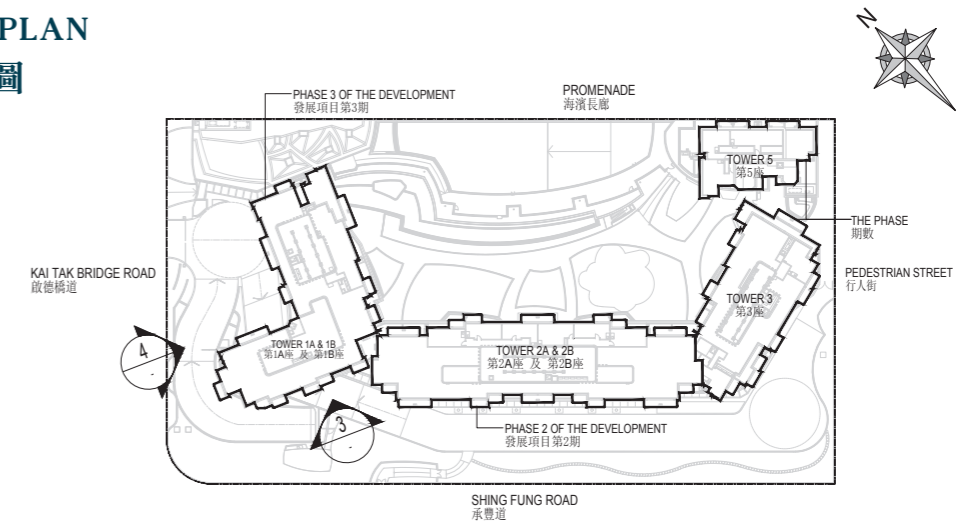
PODIUM ELEVATION PLAN 3
平台立面圖 3



PODIUM ELEVATION PLAN 4
平台立面圖 4

KEY PLAN

索引圖



Authorized Person for the Phase has certified that the elevations shown on these plans:

期數的認可人士證明本圖所顯示的立面：

- (1) are prepared on the basis of the approved building plans for the Phase as of 7 November 2023; and

以2023年11月7日的情況為準的期數的經批准的建築圖則為基礎擬備；及

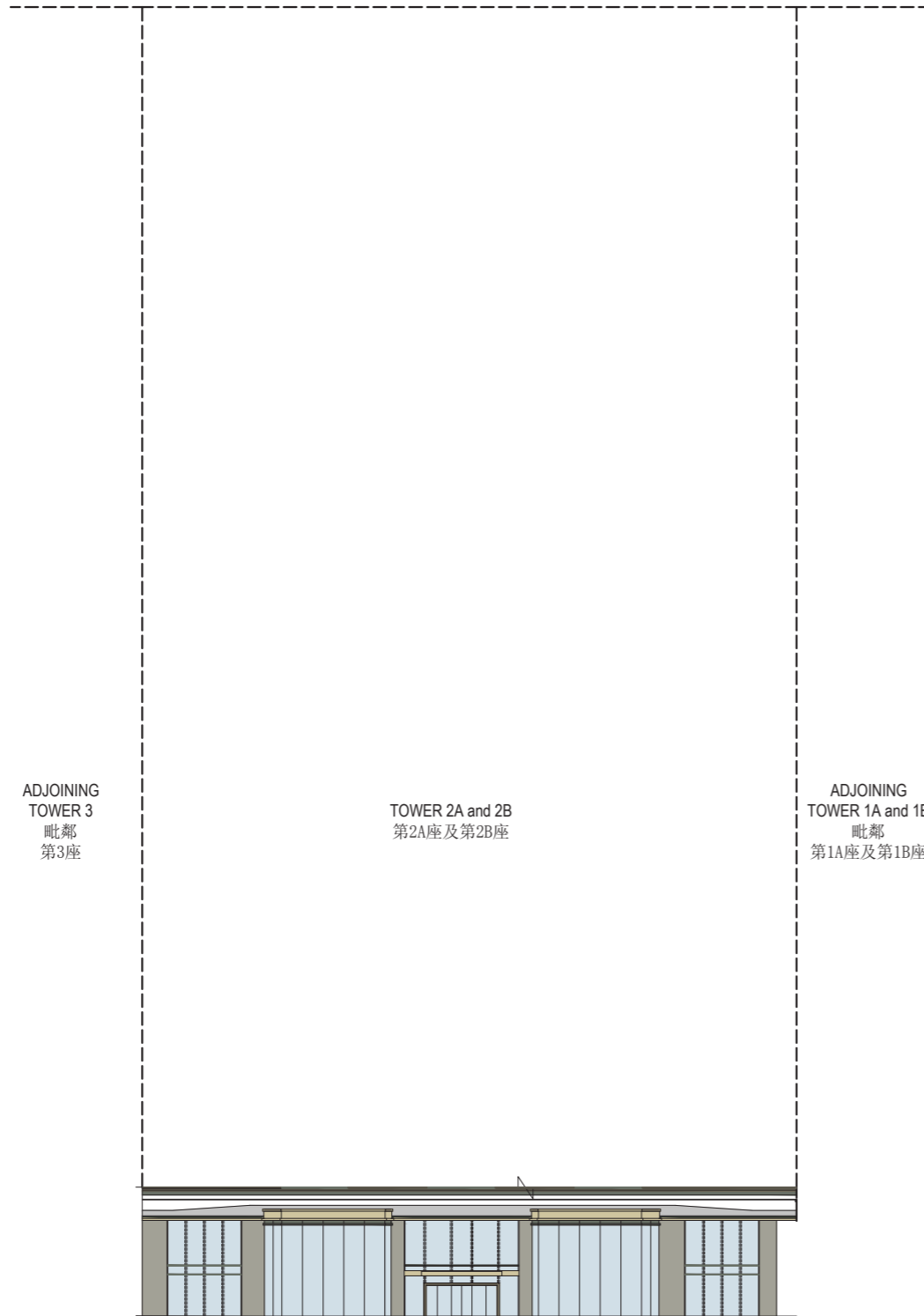
- (2) are in general accordance with the outward appearance of the Phase.

大致上與期數的外觀一致。

20 ELEVATION PLAN

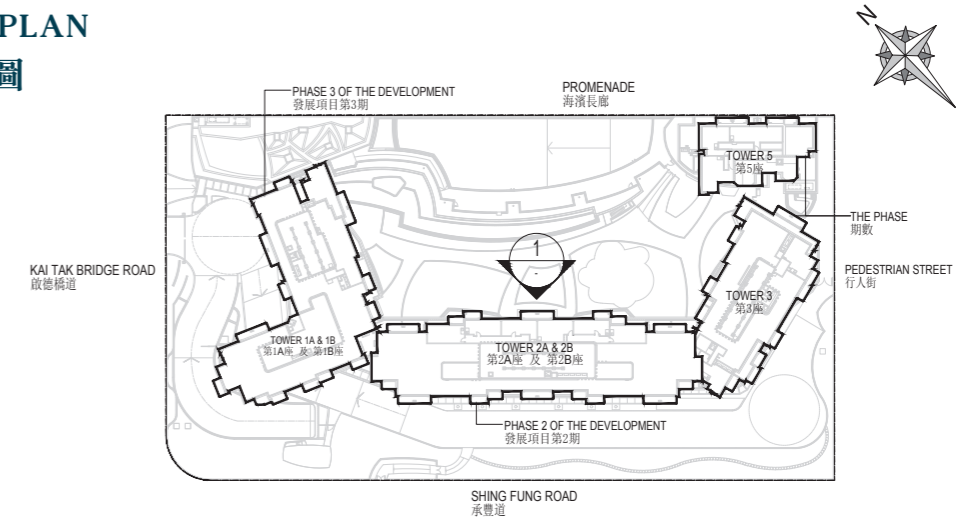
立面圖

TOWER 2 PODIUM ELEVATION PLAN 1 第2座平台立面圖1



PODIUM ELEVATION PLAN 1
平台立面圖 1

KEY PLAN 索引圖



Authorized Person for the Phase has certified that the elevations shown on these plans:

期數的認可人士證明本圖所顯示的立面：

- (1) are prepared on the basis of the approved building plans for the Phase as of 7 November 2023; and

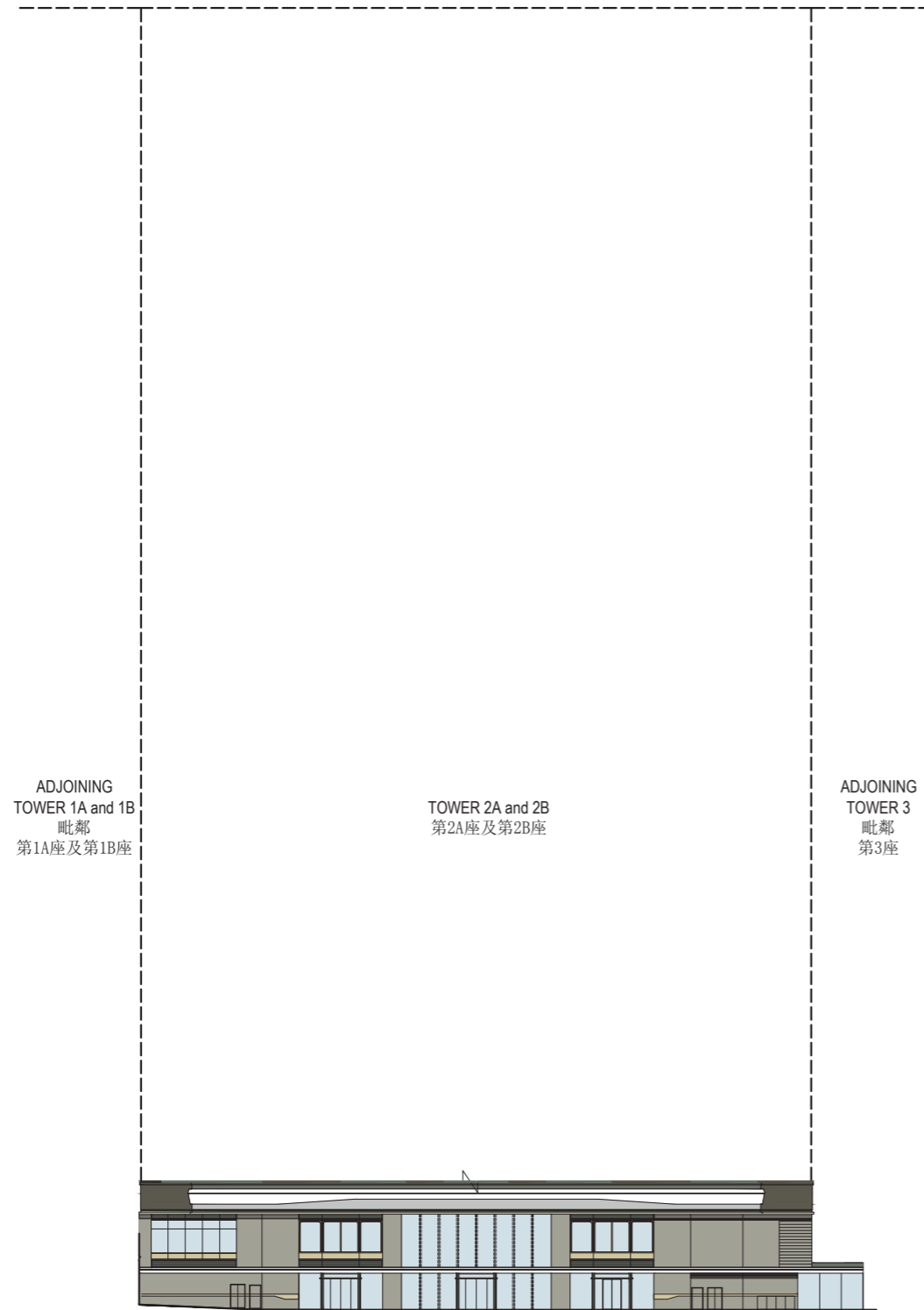
以2023年11月7日的情況為準的期數的經批准的建築圖則為基礎擬備；及

- (2) are in general accordance with the outward appearance of the Phase.

大致上與期數的外觀一致。

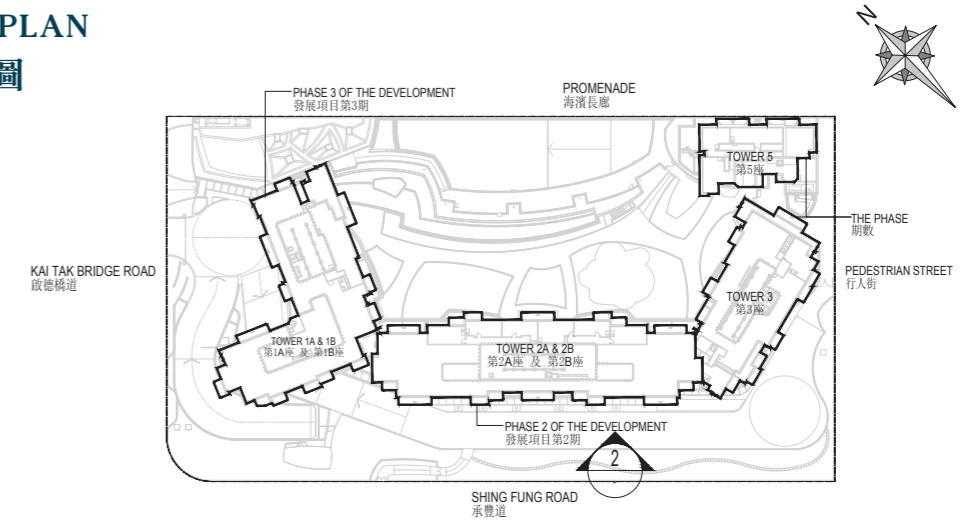
20 ELEVATION PLAN 立面圖

TOWER 2 PODIUM ELEVATION PLAN 2 第2座平台立面圖2



PODIUM ELEVATION PLAN 2
平台立面圖 2

KEY PLAN 索引圖



Authorized Person for the Phase has certified that the elevations shown on these plans:

期數的認可人士證明本圖所顯示的立面：

- (1) are prepared on the basis of the approved building plans for the Phase as of 7 November 2023; and

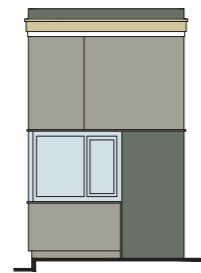
以2023年11月7日的情況為準的期數的經批准的建築圖則為基礎擬備；及

- (2) are in general accordance with the outward appearance of the Phase.

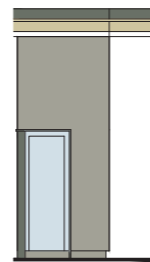
大致上與期數的外觀一致。

20 ELEVATION PLAN 立面圖

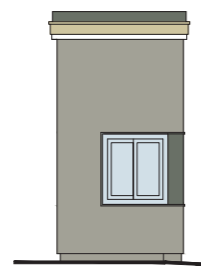
GUARD ROOM ELEVATION PLAN 1, 2, 3 & 4 保安室立面圖1、2、3及4



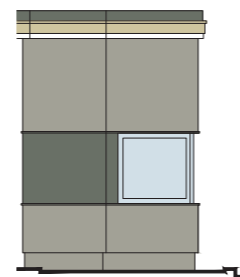
ELEVATION PLAN 1
立面圖 1



ELEVATION PLAN 2
立面圖 2

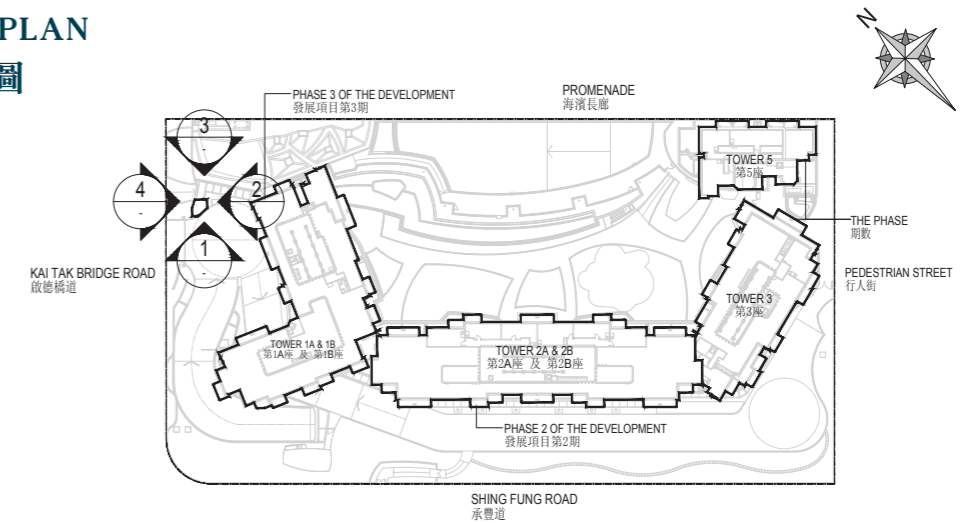


ELEVATION PLAN 3
立面圖 3



ELEVATION PLAN 4
立面圖 4

KEY PLAN 索引圖



Authorized Person for the Phase has certified that the elevations shown on these plans:

期數的認可人士證明本圖所顯示的立面：

- (1) are prepared on the basis of the approved building plans for the Phase as of 7 November 2023; and

以2023年11月7日的情況為準的期數的經批准的建築圖則為基礎擬備；及

- (2) are in general accordance with the outward appearance of the Phase.

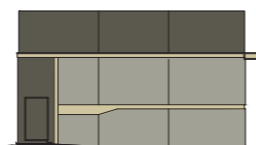
大致上與期數的外觀一致。

20 ELEVATION PLAN 立面圖

INDOOR POOL ELEVATION PLAN 1, 2, 3, 4 & 5 室內泳池立面圖1、2、3、4及5



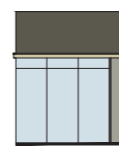
ELEVATION PLAN 1
立面圖 1



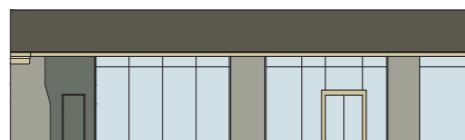
ELEVATION PLAN 2
立面圖 2



ELEVATION PLAN 3
立面圖 3

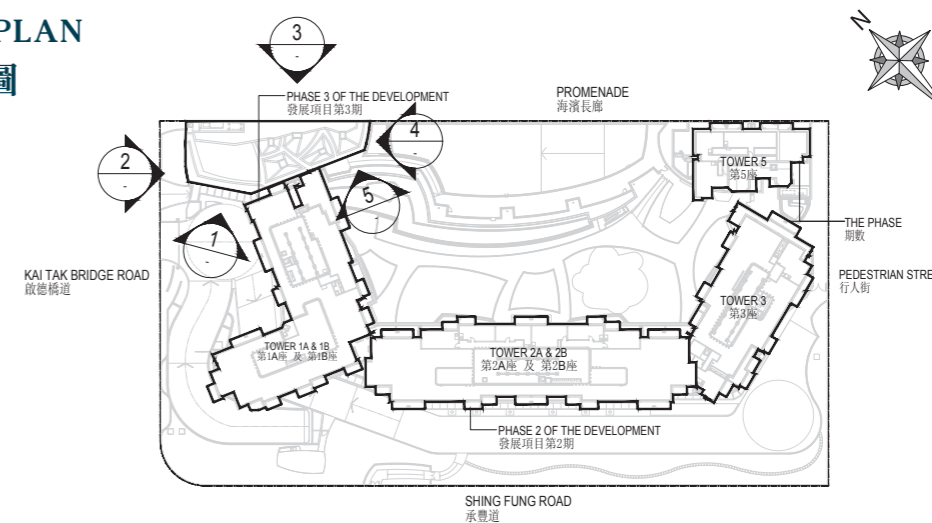


ELEVATION PLAN 4
立面圖 4



ELEVATION PLAN 5
立面圖 5

KEY PLAN 索引圖



Authorized Person for the Phase has certified that the elevations shown on these plans:

期數的認可人士證明本圖所顯示的立面：

(1) are prepared on the basis of the approved building plans for the Phase as of 7 November 2023; and

以2023年11月7日的情況為準的期數的經批准的建築圖則為基礎擬備；及

(2) are in general accordance with the outward appearance of the Phase.

大致上與期數的外觀一致。