

Floor plans of residential properties in the phase 期數的住宅物業的樓面平面圖

Tower 2 1/F
第2座 1樓

Description 描述	Flat 單位															
	A	B	C	D	E	F	G	H	J	K	L	M	N	P	Q	
Floor-to-floor height (refers to the height between the top surface of the structural slab of a floor and the top surface of the structural slab of its immediate upper floor) of each residential property (m) 每個住宅物業的層與層之間的高度 (指該樓層之石屎地台面與上一層石屎地台面之高度距離) (米)	3.200 3.400° 3.450° 3.700° 3.800°	2.850 3.200 3.450° 3.700° 3.800°	2.850 3.200 3.450° 3.800°		2.775 2.800 2.850 3.200 3.450° 3.700° 3.800°	2.800 2.850 3.200 3.400° 3.450° 3.700° 3.800°	2.850 3.200 3.200 3.450° 3.700° 3.800°		3.200 3.450° 3.700° 3.800°		3.200 3.450° 3.800°	2.850 3.200 3.450° 3.700° 3.800°		3.200 3.450° 3.800°		3.200 3.450° 3.700° 3.800°
Thickness of the floor slabs (excluding plaster) of each residential property (mm) 每個住宅物業的樓板 (不包括灰泥) 厚度 (毫米)	150 200 325	150 200	150 200 325		150 200	150 200 325	150 200	150		150 200		150		150		150 200

The internal areas of the residential properties on the upper floors will generally be slightly larger than those on the lower floors because of the reducing thickness of the structural walls on the upper floors.

因住宅物業的較高樓層的結構牆的厚度遞減，較高樓層的內部面積，一般比較低樓層的內部面積稍大。

Remarks :

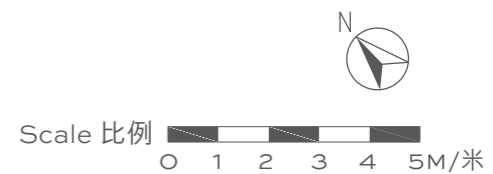
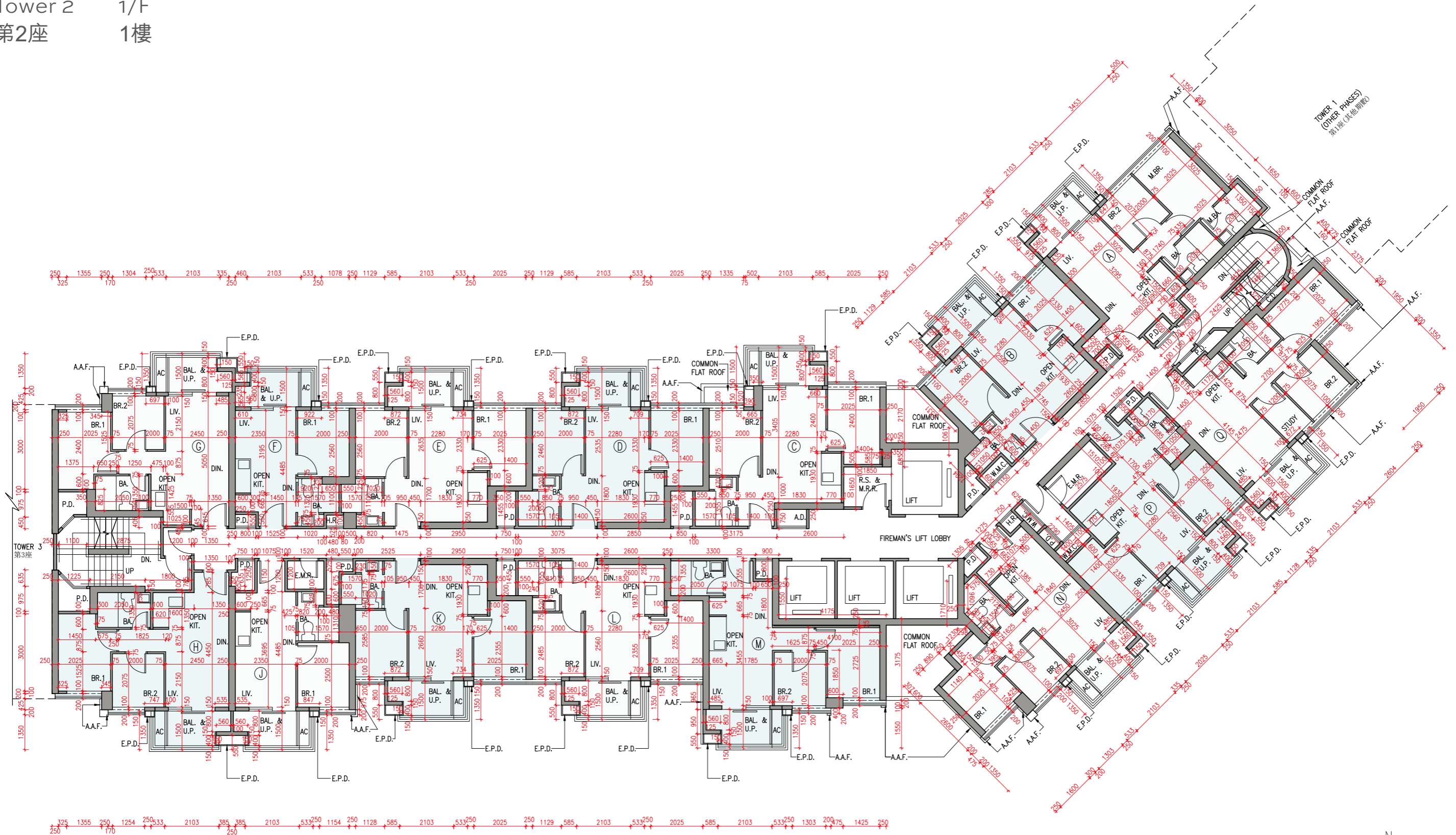
- The dimensions in the floor plans are all structural dimensions in millimetre and rounded off to the nearest integer.
- Please refer to Page 38 of this sales brochure for legend of the terms and abbreviations shown in the floor plans.
- The floor-to-floor height (i.e. the height between the top surface of the structural slab of that floor and the top surface of the structured slab of its immediate upper floor) includes, without limitation:
(△) Inclusive of the sunken depth of the sunken slab on the floor of that floor (0.600m), those sunken slabs located partly on the structural slab of that floor or its immediate upper floor.

備註：

- 樓面平面圖所列數字為以毫米標示之建築結構尺寸，並以四捨五入至整數。
- 樓面平面圖中顯示之名詞及簡稱之圖例，請參閱本售樓說明書第38頁。
- 層與層之間的高度(指該樓層之石屎地台面與上一層石屎地台面之高度距離)包括但不限於：
(△) 當中在該樓層跌級樓板為0.600米的跌級高度，該等跌級樓板有部分位於該樓層或上一層之石屎地台面。

Floor plans of residential properties in the phase 期數的住宅物業的樓面平面圖

Tower 2 1/F
第2座 1樓



Floor plans of residential properties in the phase 期數的住宅物業的樓面平面圖

Tower 2 2/F
第2座 2樓

Description 描述	Flat 單位														
	A	B	C	D	E	F	G	H	J	K	L	M	N	P	Q
Floor-to-floor height (refers to the height between the top surface of the structural slab of a floor and the top surface of the structural slab of its immediate upper floor) of each residential property (m) 每個住宅物業的層與層之間的高度 (指該樓層之石屎地台面與上一層石屎地台面之高度距離) (米)	3.200 3.200 [◇] 3.200 [◎] 3.200 [☆]	3.200 3.200 [◇] 3.200 [◎] 3.200 [◎]	3.200 3.200 [◎]		3.200 3.200 [◇] 3.200 [◎] 3.200 [☆] 3.200 [△]	3.200 3.200 [◇] 3.200 [◎] 3.200 [◎]		3.200 3.200 [◇] 3.200 [◎]			3.200 3.200 [◎]	3.200 3.200 [◇] 3.200 [◎]	3.200 3.200 [◎]		3.200 3.200 [◇] 3.200 [◎]
Thickness of the floor slabs (excluding plaster) of each residential property (mm) 每個住宅物業的樓板 (不包括灰泥) 厚度 (毫米)	150 200 325	150 200	150 200 325	150 200	150 200 325	150 200	150 200	150		150 200	150		150		150 200

The internal areas of the residential properties on the upper floors will generally be slightly larger than those on the lower floors because of the reducing thickness of the structural walls on the upper floors.

因住宅物業的較高樓層的結構牆的厚度遞減，較高樓層的內部面積，一般比較低樓層的內部面積稍大。

Remarks :

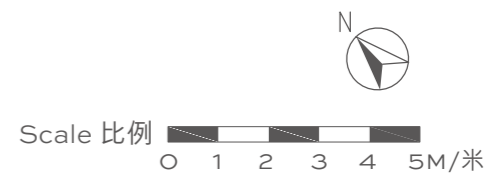
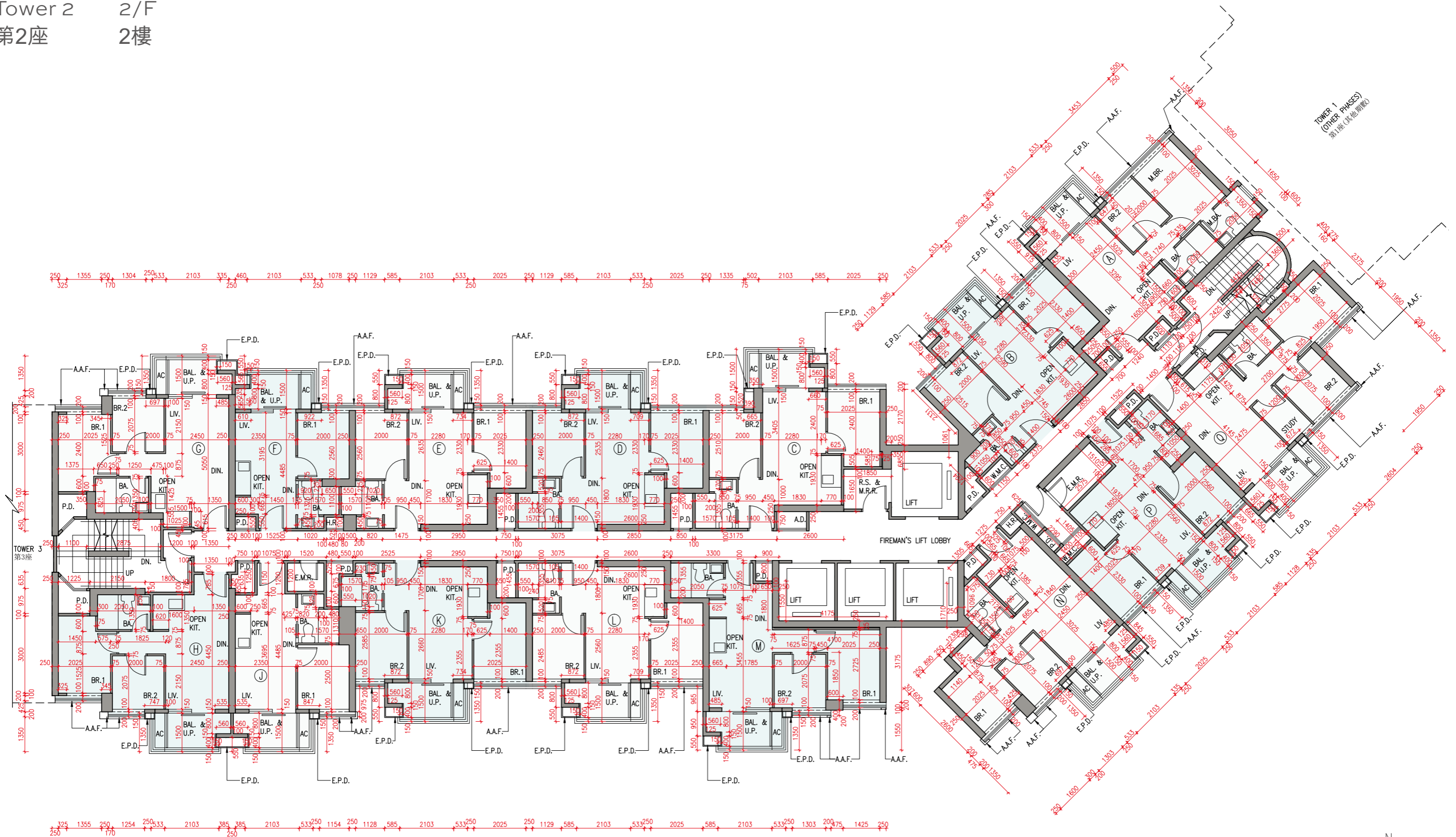
- The dimensions in the floor plans are all structural dimensions in millimetre and rounded off to the nearest integer.
- Please refer to Page 38 of this sales brochure for legend of the terms and abbreviations shown in the floor plans.
- The floor-to-floor height (i.e. the height between the top surface of the structural slab of that floor and the top surface of the structured slab of its immediate upper floor) includes, without limitation:
 - (◇) Inclusive of the sunken depth of the sunken slab on the floor of that floor (0.100m);
 - (◎) Inclusive of the sunken depth of the sunken slab on the floor of that floor (0.350m);
 - (☆) Inclusive of the sunken depth of the sunken slab on the floor of that floor (0.400m);
 - (△) Inclusive of the sunken depth of the sunken slab on the floor of that floor (0.425m), those sunken slabs located partly on the structural slab of that floor or its immediate upper floor.

備註：

- 樓面平面圖所列數字為以毫米標示之建築結構尺寸，並以四捨五入至整數。
- 樓面平面圖中顯示之名詞及簡稱之圖例，請參閱本售樓說明書第38頁。
- 層與層之間的高度(指該樓層之石屎地台面與上一層石屎地台面之高度距離)包括但不限於：
 - (◇) 當中在該樓層跌級樓板為0.100米的跌級高度；
 - (◎) 當中在該樓層跌級樓板為0.350米的跌級高度；
 - (☆) 當中在該樓層跌級樓板為0.400米的跌級高度；
 - (△) 當中在該樓層跌級樓板為0.425米的跌級高度，該等跌級樓板有部分位於該樓層或上一層之石屎地台面。

Floor plans of residential properties in the phase 期數的住宅物業的樓面平面圖

Tower 2 2/F
第2座 2樓



Floor plans of residential properties in the phase 期數的住宅物業的樓面平面圖

Tower 2 3/F, 5/F - 12/F, 15/F - 23/F & 25/F - 29/F (4/F, 13/F, 14/F & 24/F are omitted)
第2座 3樓、5樓至12樓、15樓至23樓及25樓至29樓（不設4樓、13樓、14樓及24樓）

Description 描述		Flat 單位													
		A	B	C	D	E	F	G	H	J	K	L	M	N	P
Floor-to-floor height (refers to the height between the top surface of the structural slab of a floor and the top surface of the structural slab of its immediate upper floor) of each residential property (m) 每個住宅物業的層與層之間的高度 (指該樓層之石屎地台面與上一層石屎地台面之高度距離)(米)	3/F, 5/F - 12/F, 15/F - 23/F & 25/F - 28/F 3樓、5樓至12樓、 15樓至23樓及 25樓至28樓	3.200 3.200 [◇] 3.200 [◎] 3.200 [☆]	3.200 3.200 [◇] 3.200 [◎] 3.200 [☆]	3.200 3.200 [◎]		3.200 3.200 [◇] 3.200 [◎] 3.200 [☆] 3.200 [△]	3.200 3.200 [◇] 3.200 [◎] 3.200 [☆]		3.200 3.200 [◇] 3.200 [◎]		3.200 3.200 [◎]	3.200 3.200 [◇] 3.200 [◎]	3.200 3.200 [◎]		3.200 3.200 [◇] 3.200 [◎]
	29/F 29樓	3.500 3.600 [◇] 3.850 [◎] 3.900 [☆]	3.500 3.600 [◇] 3.850 [◎]	3.500 3.850 [◎]		3.500 3.600 [◇] 3.850 [◎] 3.900 [☆] 3.925 [△]	3.500 3.600 [◇] 3.850 [◎] 3.900 [☆]		3.500 3.600 [◇] 3.850 [◎]		3.500 3.850 [◎]	3.500 3.600 [◇] 3.850 [◎]	3.500 3.850 [◎]		3.500 3.600 [◇] 3.850 [◎]
Thickness of the floor slabs (excluding plaster) of each residential property (mm) 每個住宅物業的樓板(不包括灰泥)厚度(毫米)	3/F, 5/F - 12/F, 15/F - 23/F & 25/F - 28/F 3樓、5樓至12樓、 15樓至23樓及 25樓至28樓	150 200 325	150 200	150 200 325	150 200	150 200 325	150 200 325	150 200	150	150 200	150	150		150 200	
	29/F 29樓	150 200 325	150 200	150 200 325	150 200	150 200 325	150 200 325				150 200				

The internal areas of the residential properties on the upper floors will generally be slightly larger than those on the lower floors because of the reducing thickness of the structural walls on the upper floors.

因住宅物業的較高樓層的結構牆的厚度遞減，較高樓層的內部面積，一般比較低樓層的內部面積稍大。

Remarks :

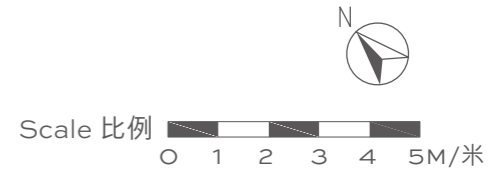
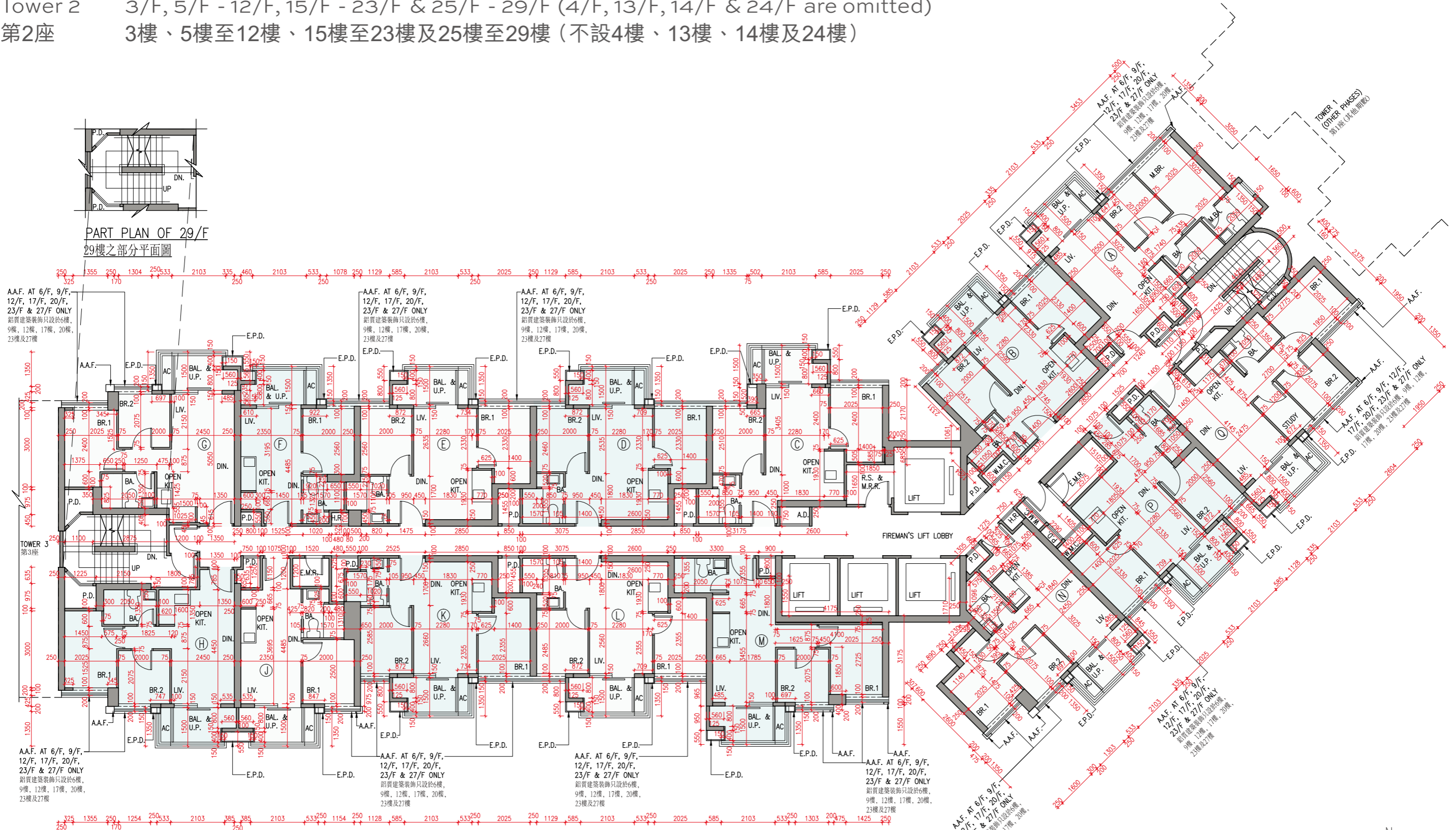
- The dimensions in the floor plans are all structural dimensions in millimetre and rounded off to the nearest integer.
- Please refer to Page 38 of this sales brochure for legend of the terms and abbreviations shown in the floor plans.
- The floor-to-floor height (i.e. the height between the top surface of the structural slab of that floor and the top surface of the structured slab of its immediate upper floor) includes, without limitation:
 - (◇) Inclusive of the sunken depth of the sunken slab on the floor of that floor (0.100m);
 - (◎) Inclusive of the sunken depth of the sunken slab on the floor of that floor (0.350m);
 - (☆) Inclusive of the sunken depth of the sunken slab on the floor of that floor (0.400m);
 - (△) Inclusive of the sunken depth of the sunken slab on the floor of that floor (0.425m), those sunken slabs located partly on the structural slab of that floor or its immediate upper floor.

備註：

- 樓面平面圖所列數字為以毫米標示之建築結構尺寸，並以四捨五入至整數。
- 樓面平面圖中顯示之名詞及簡稱之圖例，請參閱本售樓說明書第38頁。
- 層與層之間的高度(指該樓層之石屎地台面與上一層石屎地台面之高度距離)包括但不限於：
 - (◇) 當中在該樓層跌級樓板為0.100米的跌級高度；
 - (◎) 當中在該樓層跌級樓板為0.350米的跌級高度；
 - (☆) 當中在該樓層跌級樓板為0.400米的跌級高度；
 - (△) 當中在該樓層跌級樓板為0.425米的跌級高度，該等跌級樓板有部分位於該樓層或上一層之石屎地台面。

Floor plans of residential properties in the phase 期數的住宅物業的樓面平面圖

Tower 2 3/F, 5/F - 12/F, 15/F - 23/F & 25/F - 29/F (4/F, 13/F, 14/F & 24/F are omitted)
第2座 3樓、5樓至12樓、15樓至23樓及25樓至29樓 (不設4樓、13樓、14樓及24樓)



Floor plans of residential properties in the phase 期數的住宅物業的樓面平面圖

Tower 2 Roof
第2座 天台

Description 描述	Flat 單位	
	A	Q
Floor-to-floor height (refers to the height between the top surface of the structural slab of a floor and the top surface of the structural slab of its immediate upper floor) of each residential property (m) 每個住宅物業的層與層之間的高度 (指該樓層之石屎地台面與上一層石屎地台面之高度距離) (米)	Not Applicable 不適用	
Thickness of the floor slabs (excluding plaster) of each residential property (mm) 每個住宅物業的樓板 (不包括灰泥) 厚度 (毫米)	Not Applicable 不適用	

The internal areas of the residential properties on the upper floors will generally be slightly larger than those on the lower floors because of the reducing thickness of the structural walls on the upper floors.

因住宅物業的較高樓層的結構牆的厚度遞減，較高樓層的內部面積，一般比較低樓層的內部面積稍大。

Remarks :

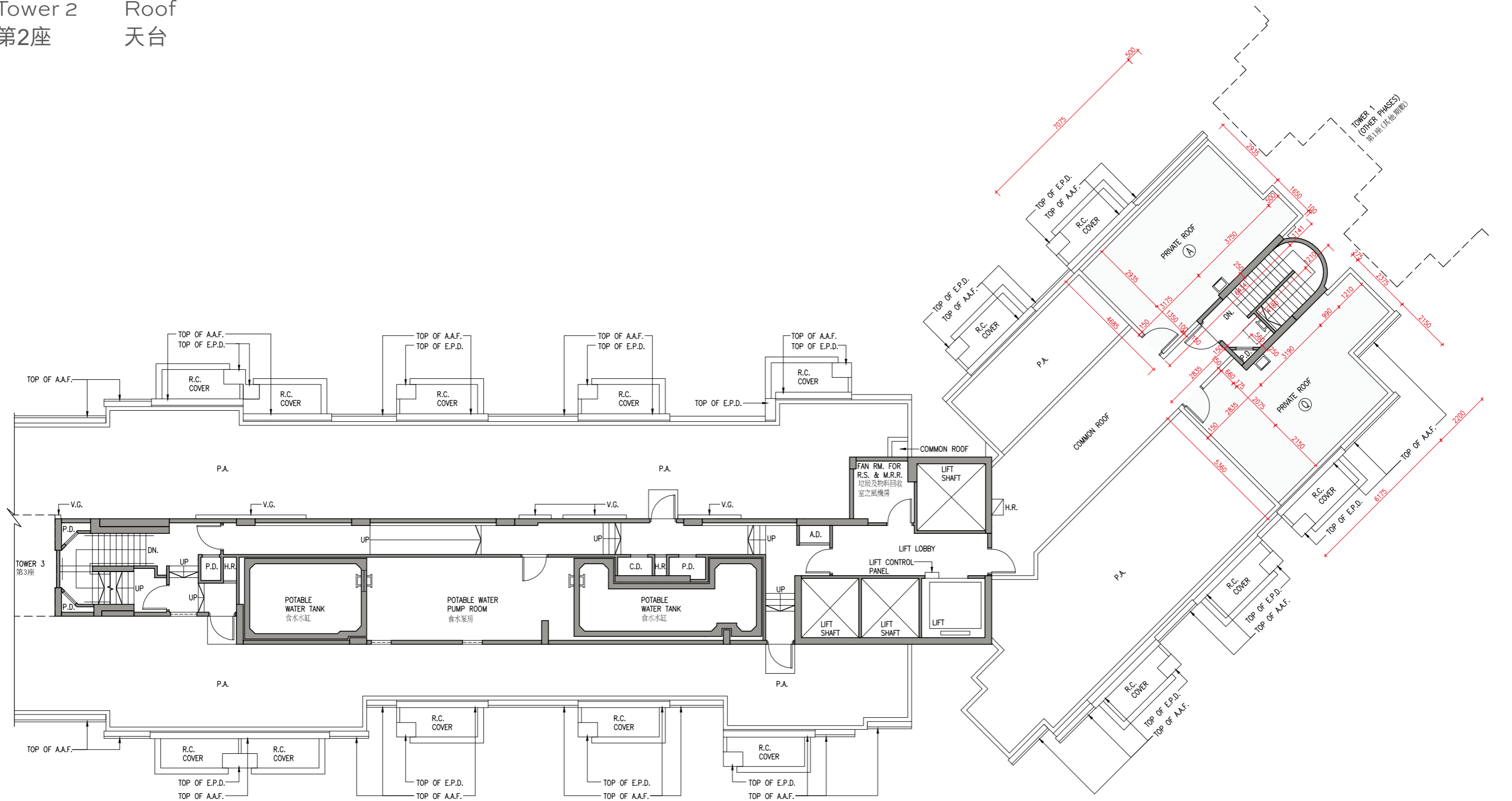
- The dimensions in the floor plans are all structural dimensions in millimetre and rounded off to the nearest integer.
- Please refer to Page 38 of this sales brochure for legend of the terms and abbreviations shown in the floor plans.

備註：

- 樓面平面圖所列數字為以毫米標示之建築結構尺寸，並以四捨五入至整數。
- 樓面平面圖中顯示之名詞及簡稱之圖例，請參閱本售樓說明書第38頁。

Floor plans of residential properties in the phase 期數的住宅物業的樓面平面圖

Tower 2 Roof
第2座 天台



Scale 比例 0 1 2 3 4 5M/米

Floor plans of residential properties in the phase 期數的住宅物業的樓面平面圖

Tower 3 1/F
第3座 1樓

Description 描述	Flat 單位														
	A	B	C	D	E	F	G	H	J	K	L	M	N	P	Q
Floor-to-floor height (refers to the height between the top surface of the structural slab of a floor and the top surface of the structural slab of its immediate upper floor) of each residential property (m) 每個住宅物業的層與層之間的高度 (指該樓層之石屎地台面與上一層石屎地台面之高度距離) (米)	3.200 3.400 [△] 3.450 [△] 3.700 [△] 3.800 [△]	2.850 3.200 3.450 [△] 3.700 [△] 3.800 [△]	3.200 3.375 [△] 3.400 [△] 3.450 [△] 3.700 [△] 3.800 [△]	2.850 3.200 3.450 [△] 3.800 [△]	2.775 2.800 3.200 3.400 [△] 3.450 [△] 3.700 [△] 3.800 [△]	2.800 2.850 3.200 3.400 [△] 3.450 [△] 3.700 [△] 3.800 [△]	2.850 3.200 3.200 3.450 [△] 3.700 [△] 3.800 [△]	3.200 3.450 [△] 3.700 [△] 3.800 [△]	2.850 3.200 3.450 [△] 3.700 [△] 3.800 [△]	3.200 3.450 [△] 3.700 [△] 3.800 [△]	2.850 3.200 3.450 [△] 3.800 [△]	2.775 2.800 2.850 3.200 3.450 [△] 3.700 [△] 3.800 [△]	3.200 3.450 [△] 3.700 [△] 3.800 [△]	3.200 3.450 [△] 3.700 [△] 3.800 [△]	3.200 3.450 [△] 3.700 [△] 3.800 [△]
Thickness of the floor slabs (excluding plaster) of each residential property (mm) 每個住宅物業的樓板 (不包括灰泥) 厚度 (毫米)	150 200 325		150 200		150 200 325	150 200	150	150 325			150 200				

The internal areas of the residential properties on the upper floors will generally be slightly larger than those on the lower floors because of the reducing thickness of the structural walls on the upper floors.

因住宅物業的較高樓層的結構牆的厚度遞減，較高樓層的內部面積，一般比較低樓層的內部面積稍大。

Remarks :

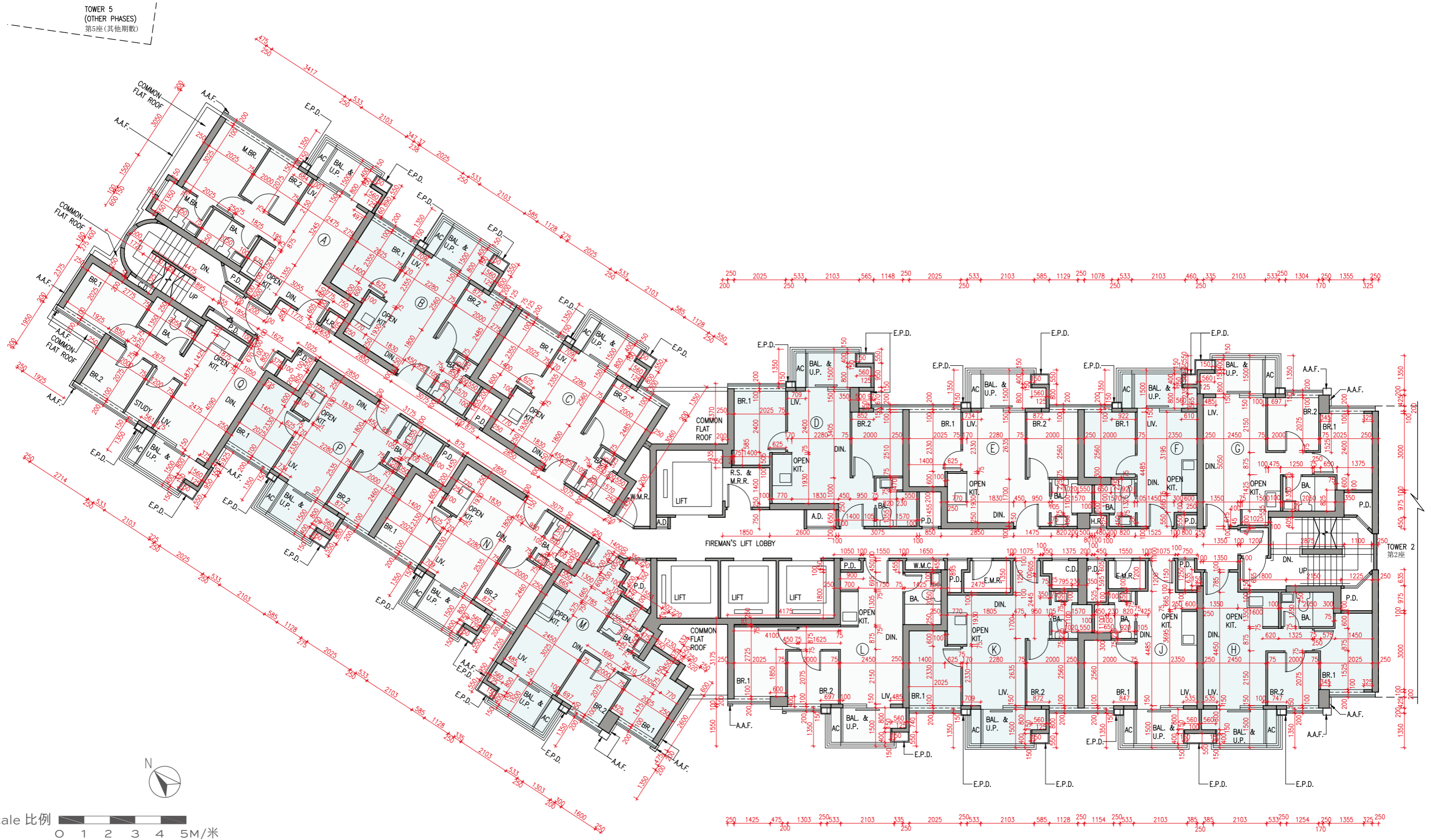
- The dimensions in the floor plans are all structural dimensions in millimetre and rounded off to the nearest integer.
- Please refer to Page 38 of this sales brochure for legend of the terms and abbreviations shown in the floor plans.
- The floor-to-floor height (i.e. the height between the top surface of the structural slab of that floor and the top surface of the structured slab of its immediate upper floor) includes, without limitation:
(△) Inclusive of the sunken depth of the sunken slab on the floor of that floor (0.600m), those sunken slabs located partly on the structural slab of that floor or its immediate upper floor.

備註：

- 樓面平面圖所列數字為以毫米標示之建築結構尺寸，並以四捨五入至整數。
- 樓面平面圖中顯示之名詞及簡稱之圖例，請參閱本售樓說明書第38頁。
- 層與層之間的高度(指該樓層之石屎地台面與上一層石屎地台面之高度距離)包括但不限於：
(△) 當中在該樓層跌級樓板為0.600米的跌級高度，該等跌級樓板有部分位於該樓層或上一層之石屎地台面。

Floor plans of residential properties in the phase 期數的住宅物業的樓面平面圖

Tower 3 1/F
第3座 1樓



Floor plans of residential properties in the phase 期數的住宅物業的樓面平面圖

Tower 3 2/F
第3座 2樓

Description 描述	Flat 單位														
	A	B	C	D	E	F	G	H	J	K	L	M	N	P	Q
Floor-to-floor height (refers to the height between the top surface of the structural slab of a floor and the top surface of the structural slab of its immediate upper floor) of each residential property (m) 每個住宅物業的層與層之間的高度 (指該樓層之石屎地台面與上一層石屎地台面之高度距離) (米)	3.200 3.200 [◇] 3.200 [◎] 3.200 [☆]	3.200 3.200 [◇] 3.200 [◎] 3.200 [◎]	3.200 3.200 [◇] 3.200 [◎] 3.200 [☆] 3.200 [△]	3.200 3.200 [◎] 3.200 [◎]	3.200 3.200 [◇] 3.200 [◎] 3.200 [☆] 3.200 [△]	3.200 3.200 [◇] 3.200 [◎] 3.200 [◎] 3.200 [☆]				3.200 3.200 [◇] 3.200 [◎]		3.200 3.200 [◎] 3.200 [◎]	3.200 3.200 [◇] 3.200 [◎] 3.200 [☆] 3.200 [△]		3.200 3.200 [◇] 3.200 [◎]
Thickness of the floor slabs (excluding plaster) of each residential property (mm) 每個住宅物業的樓板 (不包括灰泥) 厚度 (毫米)	150 200 325		150 200			150 200 325	150 200	150	150 325			150 200			

The internal areas of the residential properties on the upper floors will generally be slightly larger than those on the lower floors because of the reducing thickness of the structural walls on the upper floors.

因住宅物業的較高樓層的結構牆的厚度遞減，較高樓層的內部面積，一般比較低樓層的內部面積稍大。

Remarks :

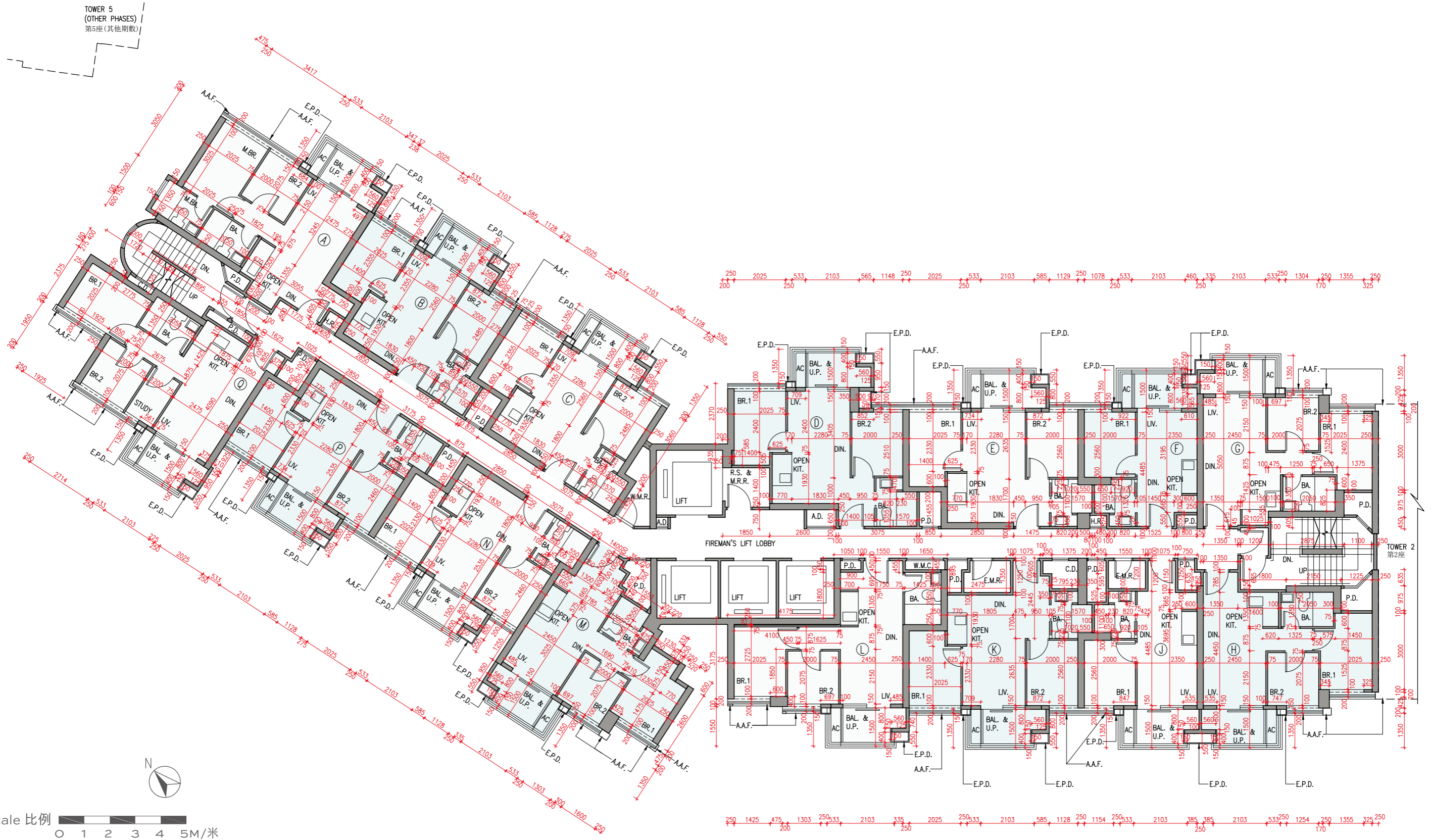
- The dimensions in the floor plans are all structural dimensions in millimetre and rounded off to the nearest integer.
- Please refer to Page 38 of this sales brochure for legend of the terms and abbreviations shown in the floor plans.
- The floor-to-floor height (i.e. the height between the top surface of the structural slab of that floor and the top surface of the structured slab of its immediate upper floor) includes, without limitation:
 - (◇) Inclusive of the sunken depth of the sunken slab on the floor of that floor (0.100m);
 - (◎) Inclusive of the sunken depth of the sunken slab on the floor of that floor (0.350m);
 - (☆) Inclusive of the sunken depth of the sunken slab on the floor of that floor (0.400m);
 - (△) Inclusive of the sunken depth of the sunken slab on the floor of that floor (0.425m), those sunken slabs located partly on the structural slab of that floor or its immediate upper floor.

備註：

- 樓面平面圖所列數字為以毫米標示之建築結構尺寸，並以四捨五入至整數。
- 樓面平面圖中顯示之名詞及簡稱之圖例，請參閱本售樓說明書第38頁。
- 層與層之間的高度(指該樓層之石屎地台面與上一層石屎地台面之高度距離)包括但不限於：
 - (◇) 當中在該樓層跌級樓板為0.100米的跌級高度；
 - (◎) 當中在該樓層跌級樓板為0.350米的跌級高度；
 - (☆) 當中在該樓層跌級樓板為0.400米的跌級高度；
 - (△) 當中在該樓層跌級樓板為0.425米的跌級高度，該等跌級樓板有部分位於該樓層或上一層之石屎地台面。

Floor plans of residential properties in the phase 期數的住宅物業的樓面平面圖

Tower 3 2/F
第3座 2樓



Floor plans of residential properties in the phase 期數的住宅物業的樓面平面圖

Tower 3 3/F & 5/F - 7/F (4/F is omitted)
第3座 3樓及5樓至7樓（不設4樓）

Description 描述	Flat 單位															
	A	B	C	D	E	F	G	H	J	K	L	M	N	P	Q	
Floor-to-floor height (refers to the height between the top surface of the structural slab of a floor and the top surface of the structural slab of its immediate upper floor) of each residential property (m) 每個住宅物業的層與層之間的高度 (指該樓層之石屎地台面與上一層石屎地台面之高度距離) (米)	3.200 3.200 [◇] 3.200 [◎] 3.200 [☆]	3.200 3.200 [◇] 3.200 [◎] 3.200 [◎]	3.200 3.200 [◇] 3.200 [◎] 3.200 [☆] 3.200 [△]	3.200 3.200 [◎] 3.200 [◎]	3.200 3.200 [◇] 3.200 [◎] 3.200 [☆] 3.200 [△]	3.200 3.200 [◇] 3.200 [◎] 3.200 [◎] 3.200 [☆]	3.200 3.200 [◇] 3.200 [◎] 3.200 [◎] 3.200 [☆]			3.200 3.200 [◇] 3.200 [◎] 3.200 [◎]			3.200 3.200 [◇] 3.200 [◎] 3.200 [☆] 3.200 [△]		3.200 3.200 [◇] 3.200 [◎] 3.200 [◎]	
Thickness of the floor slabs (excluding plaster) of each residential property (mm) 每個住宅物業的樓板 (不包括灰泥) 厚度 (毫米)	150 200 325		150 200			150 200 325	150 200	150	150 325			150 200				

The internal areas of the residential properties on the upper floors will generally be slightly larger than those on the lower floors because of the reducing thickness of the structural walls on the upper floors.

因住宅物業的較高樓層的結構牆的厚度遞減，較高樓層的內部面積，一般比較低樓層的內部面積稍大。

Remarks :

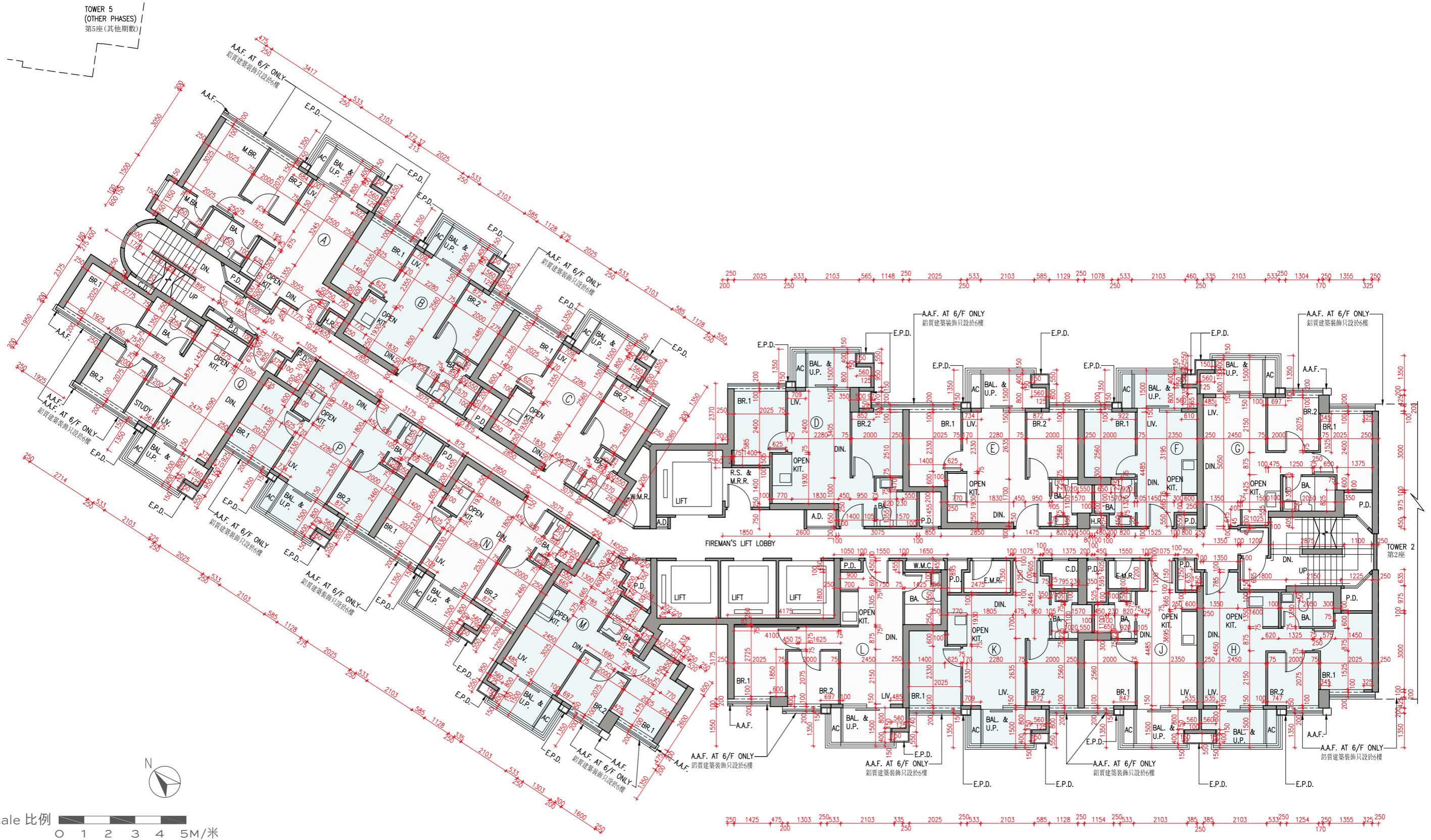
- The dimensions in the floor plans are all structural dimensions in millimetre and rounded off to the nearest integer.
- Please refer to Page 38 of this sales brochure for legend of the terms and abbreviations shown in the floor plans.
- The floor-to-floor height (i.e. the height between the top surface of the structural slab of that floor and the top surface of the structured slab of its immediate upper floor) includes, without limitation:
 - (◇) Inclusive of the sunken depth of the sunken slab on the floor of that floor (0.100m);
 - (◎) Inclusive of the sunken depth of the sunken slab on the floor of that floor (0.350m);
 - (☆) Inclusive of the sunken depth of the sunken slab on the floor of that floor (0.400m);
 - (△) Inclusive of the sunken depth of the sunken slab on the floor of that floor (0.425m), those sunken slabs located partly on the structural slab of that floor or its immediate upper floor.

備註：

- 樓面平面圖所列數字為以毫米標示之建築結構尺寸，並以四捨五入至整數。
- 樓面平面圖中顯示之名詞及簡稱之圖例，請參閱本售樓說明書第38頁。
- 層與層之間的高度(指該樓層之石屎地台面與上一層石屎地台面之高度距離)包括但不限於：
 - (◇) 當中在該樓層跌級樓板為0.100米的跌級高度；
 - (◎) 當中在該樓層跌級樓板為0.350米的跌級高度；
 - (☆) 當中在該樓層跌級樓板為0.400米的跌級高度；
 - (△) 當中在該樓層跌級樓板為0.425米的跌級高度，該等跌級樓板有部分位於該樓層或上一層之石屎地台面。

Floor plans of residential properties in the phase 期數的住宅物業的樓面平面圖

Tower 3 3/F & 5/F - 7/F (4/F is omitted)
第3座 3樓及5樓至7樓 (不設4樓)



Floor plans of residential properties in the phase 期數的住宅物業的樓面平面圖

Tower 3 8/F - 12/F, 15/F - 23/F & 25/F - 29/F (13/F, 14/F & 24/F are omitted)
第3座 8樓至12樓、15樓至23樓及25樓至29樓（不設13樓、14樓及24樓）

Description 描述		Flat 單位														
		A	B	C	D	E	F	G	H	J	K	L	M	N	P	Q
Floor-to-floor height (refers to the height between the top surface of the structural slab of a floor and the top surface of the structural slab of its immediate upper floor) of each residential property (m) 每個住宅物業的層與層之間的高度 (指該樓層之石屎地台面與上一層石屎地台面之高度距離)(米)	8/F - 12/F, 15/F - 23/F & 25/F - 28/F 8樓至12樓、 15樓至23樓及 25樓至28樓	3.200 3.200 [◇] 3.200 [◎] 3.200 [☆]	3.200 3.200 [◇] 3.200 [◎] 3.200 [☆]	3.200 3.200 [◇] 3.200 [◎] 3.200 [☆] 3.200 [△]	3.200 3.200 [◎] 3.200 [☆]	3.200 3.200 [◇] 3.200 [◎] 3.200 [☆] 3.200 [△]	3.200 3.200 [◇] 3.200 [◎] 3.200 [☆]			3.200 3.200 [◇] 3.200 [◎] 3.200 [☆]			3.200 3.200 [◎] 3.200 [☆]	3.200 3.200 [◇] 3.200 [◎] 3.200 [☆] 3.200 [△]	3.200 3.200 [◇] 3.200 [◎] 3.200 [☆]	
	29/F 29樓	3.500 3.600 [◇] 3.850 [◎] 3.900 [☆]	3.500 3.600 [◇] 3.850 [◎] 3.850 [☆]	3.500 3.600 [◇] 3.850 [◎] 3.900 [☆] 3.925 [△]	3.500 3.850 [◎] 3.850 [☆]	3.500 3.600 [◇] 3.850 [◎] 3.900 [☆] 3.925 [△]	3.500 3.600 [◇] 3.850 [◎] 3.850 [☆]			3.500 3.600 [◇] 3.850 [◎] 3.850 [☆]			3.500 3.850 [◎] 3.850 [☆]	3.500 3.600 [◇] 3.850 [◎] 3.900 [☆] 3.925 [△]	3.500 3.600 [◇] 3.850 [◎] 3.850 [☆]	
Thickness of the floor slabs (excluding plaster) of each residential property (mm) 每個住宅物業的樓板(不包括灰泥)厚度(毫米)	8/F - 12/F, 15/F - 23/F & 25/F - 28/F 8樓至12樓、 15樓至23樓及 25樓至28樓	150 200 325		150 200			150 200 325	150 200	150	150 325			150 200			
	29/F 29樓	150 200 325		150 200			150 200 325	150 200	150 200	150 200 325			150 200			

The internal areas of the residential properties on the upper floors will generally be slightly larger than those on the lower floors because of the reducing thickness of the structural walls on the upper floors.

因住宅物業的較高樓層的結構牆的厚度遞減，較高樓層的內部面積，一般比較低樓層的內部面積稍大。

Remarks :

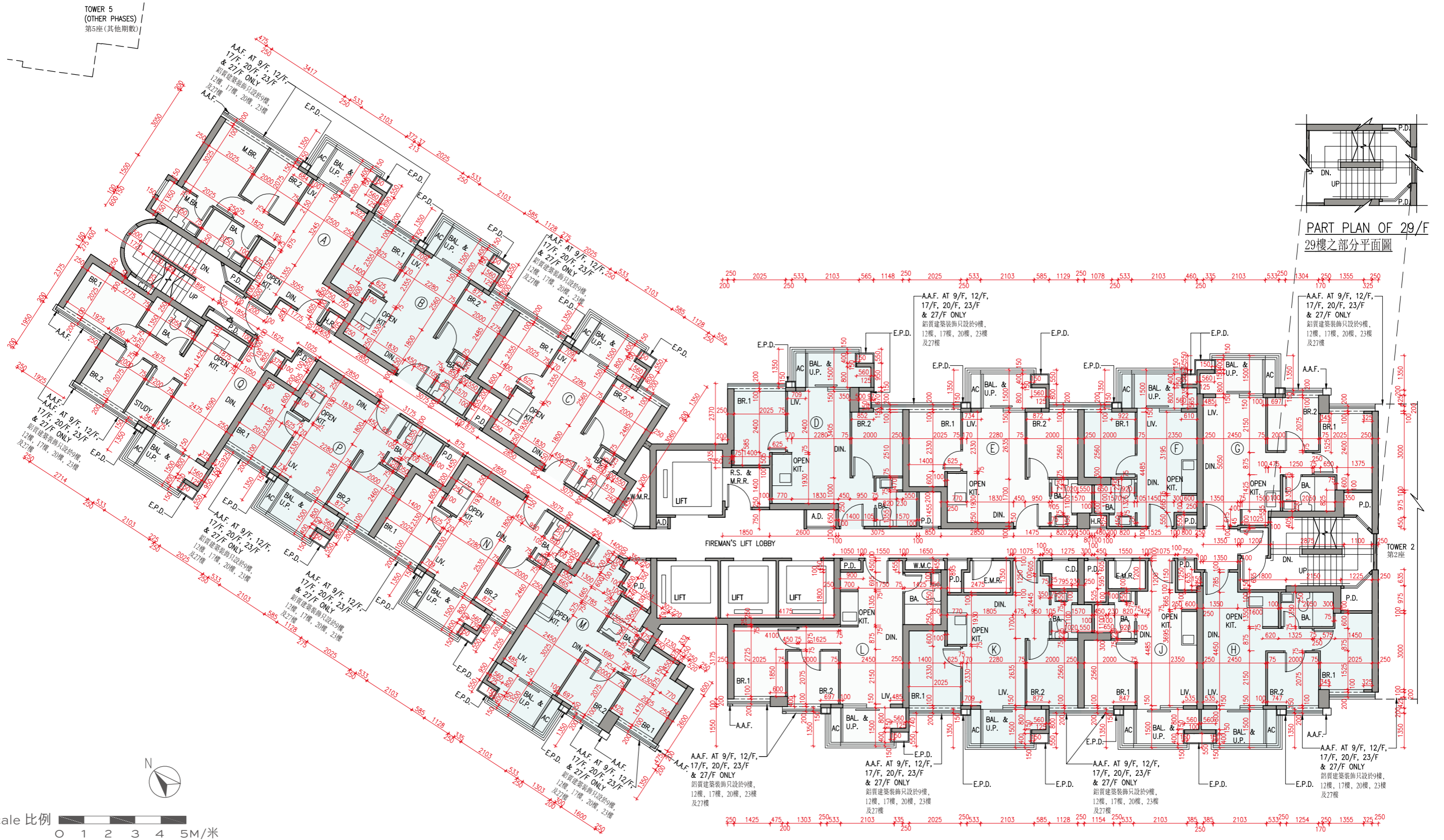
- The dimensions in the floor plans are all structural dimensions in millimetre and rounded off to the nearest integer.
- Please refer to Page 38 of this sales brochure for legend of the terms and abbreviations shown in the floor plans.
- The floor-to-floor height (i.e. the height between the top surface of the structural slab of that floor and the top surface of the structured slab of its immediate upper floor) includes, without limitation:
 - (◇) Inclusive of the sunken depth of the sunken slab on the floor of that floor (0.100m);
 - (◎) Inclusive of the sunken depth of the sunken slab on the floor of that floor (0.350m);
 - (☆) Inclusive of the sunken depth of the sunken slab on the floor of that floor (0.400m);
 - (△) Inclusive of the sunken depth of the sunken slab on the floor of that floor (0.425m), those sunken slabs located partly on the structural slab of that floor or its immediate upper floor.

備註：

- 樓面平面圖所列數字為以毫米標示之建築結構尺寸，並以四捨五入至整數。
- 樓面平面圖中顯示之名詞及簡稱之圖例，請參閱本售樓說明書第38頁。
- 層與層之間的高度(指該樓層之石屎地台面與上一層石屎地台面之高度距離)包括但不限於：
 - (◇) 當中在該樓層跌級樓板為0.100米的跌級高度；
 - (◎) 當中在該樓層跌級樓板為0.350米的跌級高度；
 - (☆) 當中在該樓層跌級樓板為0.400米的跌級高度；
 - (△) 當中在該樓層跌級樓板為0.425米的跌級高度，該等跌級樓板有部分位於該樓層或上一層之石屎地台面。

Floor plans of residential properties in the phase 期數的住宅物業的樓面平面圖

Tower 3 8/F - 12/F, 15/F - 23/F & 25/F - 29/F (13/F, 14/F & 24/F are omitted)
第3座 8樓至12樓、15樓至23樓及25樓至29樓 (不設13樓、14樓及24樓)



Floor plans of residential properties in the phase 期數的住宅物業的樓面平面圖

Tower 3 Roof
第3座 天台

Description 描述	Flat 單位	
	A	Q
Floor-to-floor height (refers to the height between the top surface of the structural slab of a floor and the top surface of the structural slab of its immediate upper floor) of each residential property (m) 每個住宅物業的層與層之間的高度 (指該樓層之石屎地台面與上一層石屎地台面之高度距離) (米)	Not Applicable 不適用	
Thickness of the floor slabs (excluding plaster) of each residential property (mm) 每個住宅物業的樓板 (不包括灰泥) 厚度 (毫米)	Not Applicable 不適用	

The internal areas of the residential properties on the upper floors will generally be slightly larger than those on the lower floors because of the reducing thickness of the structural walls on the upper floors.

因住宅物業的較高樓層的結構牆的厚度遞減，較高樓層的內部面積，一般比較低樓層的內部面積稍大。

Remarks :

- The dimensions in the floor plans are all structural dimensions in millimetre and rounded off to the nearest integer.
- Please refer to Page 38 of this sales brochure for legend of the terms and abbreviations shown in the floor plans.

備註：

- 樓面平面圖所列數字為以毫米標示之建築結構尺寸，並以四捨五入至整數。
- 樓面平面圖中顯示之名詞及簡稱之圖例，請參閱本售樓說明書第38頁。

Floor plans of residential properties in the phase 期數的住宅物業的樓面平面圖

Remarks applicable to the floor plans in this section:

1. There are architectural features and/or exposed pipes on the external walls of some of the floors. For details, please refer to the latest approved building plans and/or approved drainage plans and/or other relevant plans.
2. Common pipes exposed and /or enclosed in cladding are located at/adjacent to the balcony and utility platform and/or flat roof and/or air-conditioner platform and/or external wall of some residential properties. For details, please refer to the latest approved building plans and/or approved drainage plans and/or other relevant plans.
3. There are sunken slabs for mechanical and electrical services and/or false ceiling/bulkheads for the air-conditioning fittings and/or mechanical and electrical services at some residential properties.
4. There may be exposed pipes installed in some bathrooms.
5. There are pipes enclosed by the fittings and finishes in some residential properties. For details, please refer to the latest approved drainage plans and/or other relevant plans.
6. There may be exposed pipes located at the upper part of some balconies and utility platform and air- conditioner platforms.
7. Balconies and utility platforms and air-conditioner platforms are non-enclosed areas.
8. There may be non-structural prefabricated external walls in some residential properties. The Saleable Area as defined in the formal Agreement for Sale and Purchase of a residential property has included the non-structural prefabricated external walls and is measured from the exterior of such non-structural prefabricated external walls.
9. The ceiling height of some residential properties may vary due to structural, architectural and/or decoration design variations.
10. During the necessary maintenance of the external walls of towers arranged by Manager of the Development/the Phase, suspended working platform will be operating in the airspace outside windows and/or above common flat roof/ roof of the residential properties of such towers.
11. Symbols of fittings and fitments such as bath tub, sink, water closet, shower, sink counter, etc. in the floor plans are prepared based on the latest approved building plans and are for general indication only.

適用於本節之樓面平面圖之備註：

1. 部分樓層外牆範圍設有建築裝飾及/或外露喉管，詳細資料請參考最新經批准的建築圖則及/或經批准的排水設施圖則及/或其他相關圖則。
2. 部分住宅物業的露台及工作平台及/或平台及/或空調機平台及/或外牆上/附近設有外露及/或飾面板內藏之公用喉管，詳細資料請參考最新經批准的建築圖則及/ 或經批准的排水設施圖則及/ 或其他相關圖則。
3. 部分住宅物業有用以安裝機電設備的跌級樓板及/或以裝置空調裝備及/或其他機電設備的假天花/裝飾橫樑。
4. 部分浴室內可能裝有外露喉管。
5. 部分住宅物業於裝置及裝修物料內設有喉管。詳細資料請參考最新經批准的排水設施圖則及其他相關圖則。
6. 部分露台及工作平台和空調機平台上方可能裝有外露喉管。
7. 露台及工作平台及空調機平台為不可封閉的地方。
8. 部分住宅物業可能裝有非結構預製外牆。正式買賣合約之實用面積之計算包括非結構預製外牆，並由非結構預製外牆之外圍起計。
9. 部分住宅物業之天花高度將會因應結構、建築設計及/ 或裝修設計上的需要有差異。
10. 在發展項目/期數管理人安排於大廈外牆之必要維修進行期間，吊船將在該大廈的住宅物業之窗戶外及/或公用平台/ 天台上之上空運作。
11. 樓面平面圖上所顯示的裝置符號，如浴缸、洗滌盆、坐廁、花灑、洗滌盆櫃等乃按最新的經批准的建築圖則繪製，只作一般示意用途。

Legend for floor plans of residential properties in the Phase 期數的住宅物業的樓面平面圖圖例

A.A.F. = Aluminium Architectural Feature 鋁質建築裝飾

A.D. = Air Duct 風槽

AC = Air Conditioner Platform 空調機平台

BA. = Bathroom 浴室

BAL. & U.P. = Balcony & Utility Platform 露台及工作平台

BR. = Bedroom 睡房

C.D. = Cable Duct 電線槽

COMMON FLAT ROOF = Common Flat Roof 公用平台

COMMON ROOF = Common Roof 公用天台

DIN. = Dining Room 飯廳

DN. = Down 下

E.M.R. = Electrical Meter Room 電錶房

E.P.D. = External Pipe Duct (Architectural Feature) 外置管道槽(建築裝飾)

FAN RM. FOR R.S. & M.R.R. = Fan Room For Refuse Storage and Material Recovery Room
垃圾及物料回收室之風機房

FAN RM. FOR W.M.R. = Fan Room for Water Meter Room 水錶房之風機房

FIREMAN'S LIFT LOBBY = Fireman's Lift Lobby 消防升降機大堂

H.R. = Hose Reel 消防喉轆

LIFT = Lift 升降機

LIFT CONTROL PANEL = Lift Control Panel 升降機控制櫃

LIFT LOBBY = Lift Lobby 升降機大堂

LIFT SHAFT = Lift Shaft 升降機槽

LIV. = Living Room 客廳

M.BA. = Master Bathroom 主人房浴室

M.BR. = Master Bedroom 主人睡房

OPEN KIT. = Open Kitchen 開放式廚房

P.A. = Planter 花槽

P.D. = Pipe Duct 管道槽

PRIVATE ROOF = Private Roof 私人天台

R.C. COVER = Reinforced Concrete Cover 鋼筋混凝土上蓋

R.S. & M.R.R. = Refuse Storage and Material Recovery Room 垃圾及物料回收室

STUDY = Study Room 書房

TOP OF A.A.F. = Top of Aluminium Architectural Feature 鋁質建築裝飾頂端

TOP OF E.P.D. = Top of External Pipe Duct (Architectural Feature) 外置管道槽(建築裝飾)頂端

UP = Up 上

V.G. = Vertical Green 垂直綠化

W.M.C. = Water Meter Cabinet 水錶櫃

W.M.R. = Water Meter Room 水錶房