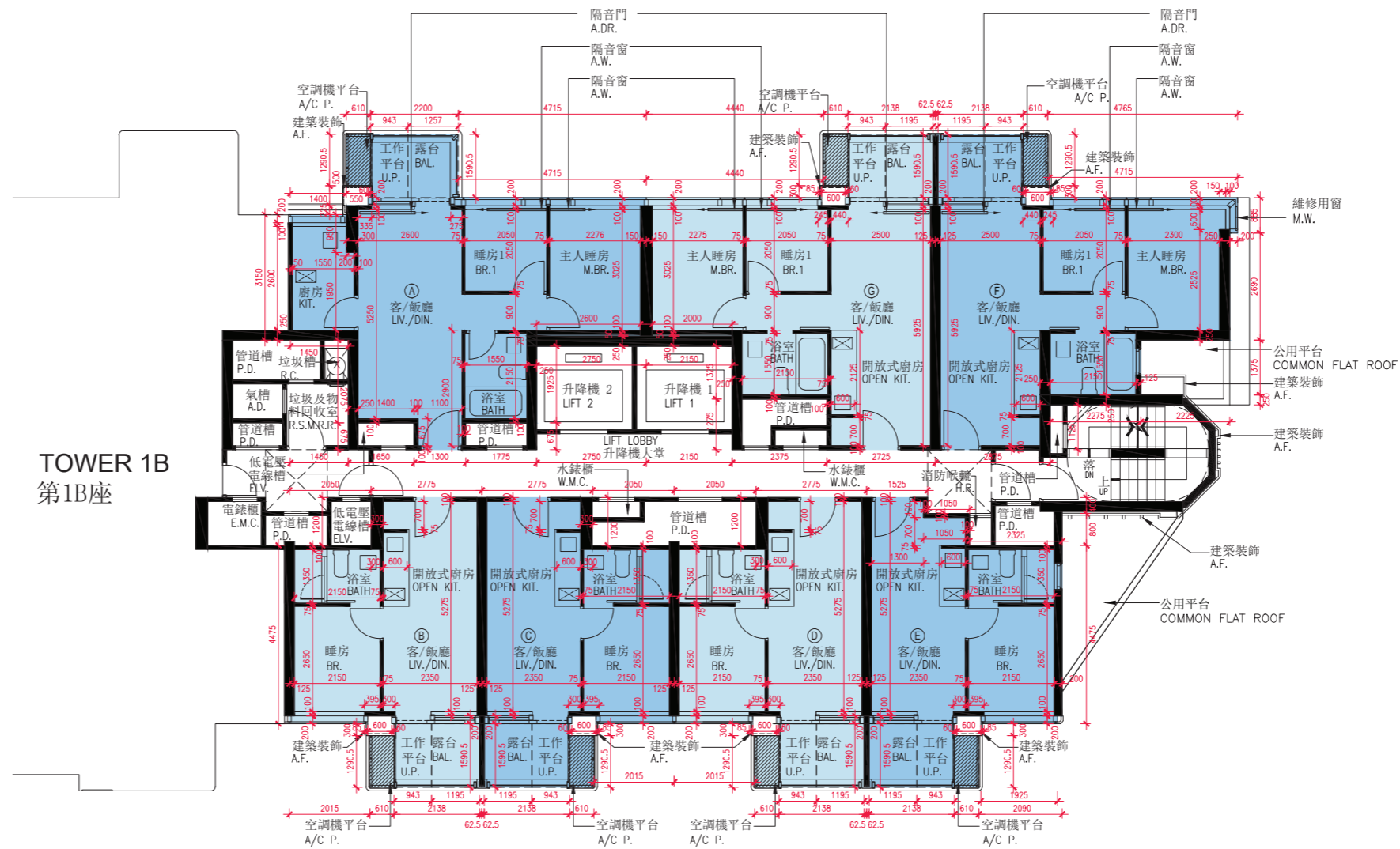


Legend of Terms and Abbreviations on Floor Plans:

樓面平面圖中的名稱及簡稱：

A.D. = AIR DUCT	氣槽	LIFT LOBBY	升降機大堂
A.DR. = ACOUSTIC DOOR	隔音門	LIFT OVERRUN	升降機槽頂部
A.W. = ACOUSTIC WINDOW	隔音窗	LIV. / DIN. = LIVING AND DINING ROOM	客/飯廳
A/C P. = AIR-CONDITIONER PLATFORM	空調機平台	M. BATH = MASTER BATHROOM	主人浴室
A.F. = ARCHITECTURAL FEATURE	建築裝飾	M. BR. = MASTER BEDROOM	主人睡房
BAL. = BALCONY	露台	M.W. = MAINTENANCE WINDOW	維修用窗
BATH = BATHROOM	浴室	OPEN KIT. = OPEN KITCHEN	開放式廚房
BR. = BEDROOM	睡房	P.D. = PIPE DUCT	管道槽
BUILDING LINE ABOVE	上層之建築物	POTABLE WATER PUMP ROOM	食水水泵房
CAT LADDER	豎梯	REFUGE FLOOR	底護層
COMMON FLAT ROOF	公用平台	R.C. = REFUSE CHUTE	垃圾槽
DN = DOWN	落	ROOF	天台
E.M.C. = ELECTRICAL METER CABINET	電錶櫃	R.S.M.R.R. = REFUSE STORAGE AND MATERIAL RECOVERY ROOM	垃圾及物料回收室
E.M.R. = ELECTRICAL METER ROOM	電錶房	SHORT GRASS TURF	草地
ELV. = EXTRA-LOW VOLTAGE DUCT	低電壓電線槽	TBE ROOM = TELECOMMUNICATION AND BROADCASTING EQUIPMENT ROOM	電訊及廣播設備房
ELV & CABLE DUCT (TBE) = EXTRA-LOW VOLTAGE AND CABLE DUCT (TELECOMMUNICATION AND BROADCASTING EQUIPMENT)	低電壓電線及電線管道槽 (電訊及廣播設備)	TOP OF SLAB OF BAL. = TOP OF SLAB OF BALCONY	露台上蓋
FAN ROOM	風機房	TOP OF SLAB OF BAL., U.P. AND A/C P. = TOP OF SLAB OF BALCONY, UTILITY PLATFORM AND AIR-CONDITIONER PLATFORM	露台、工作平台及 空調機平台上蓋
FLAT ROOF	平台	TRS = TEMPORARY REFUGE SPACE	臨時底護處
F.S. DUCT = FIRE SERVICE DUCT	消防管道槽	U.P. = UTILITY PLATFORM	工作平台
H.R. = HOSE REEL	消防喉轆	UP	上
KIT. = KITCHEN	廚房	UTI. = UTILITY ROOM	工作間
LAV. = LAVATORY	洗手間	VOID	中空
LIFT	升降機	WALK-IN CLOSET	衣帽間
		W.M.C. = WATER METER CABINET	水錶櫃

TOWER 1A
2/F
第1A座
二樓



Notes 附註:

- (1) The dimensions on the floor plans are all in millimetre.
樓面平面圖所列之所有尺寸均以毫米標示。
- (2) Please refer to page 19 of this sales brochure for legend of terms and abbreviations shown on floor plans.
樓面平面圖中的名稱及簡稱請參閱本售樓說明書第19頁。



11

FLOOR PLANS OF RESIDENTIAL PROPERTIES IN THE DEVELOPMENT

發展項目的住宅物業的樓面平面圖

The thickness of the floor slabs (excluding plaster) and floor-to-floor height of each residential property of the Development as provided in the approved building plans are:

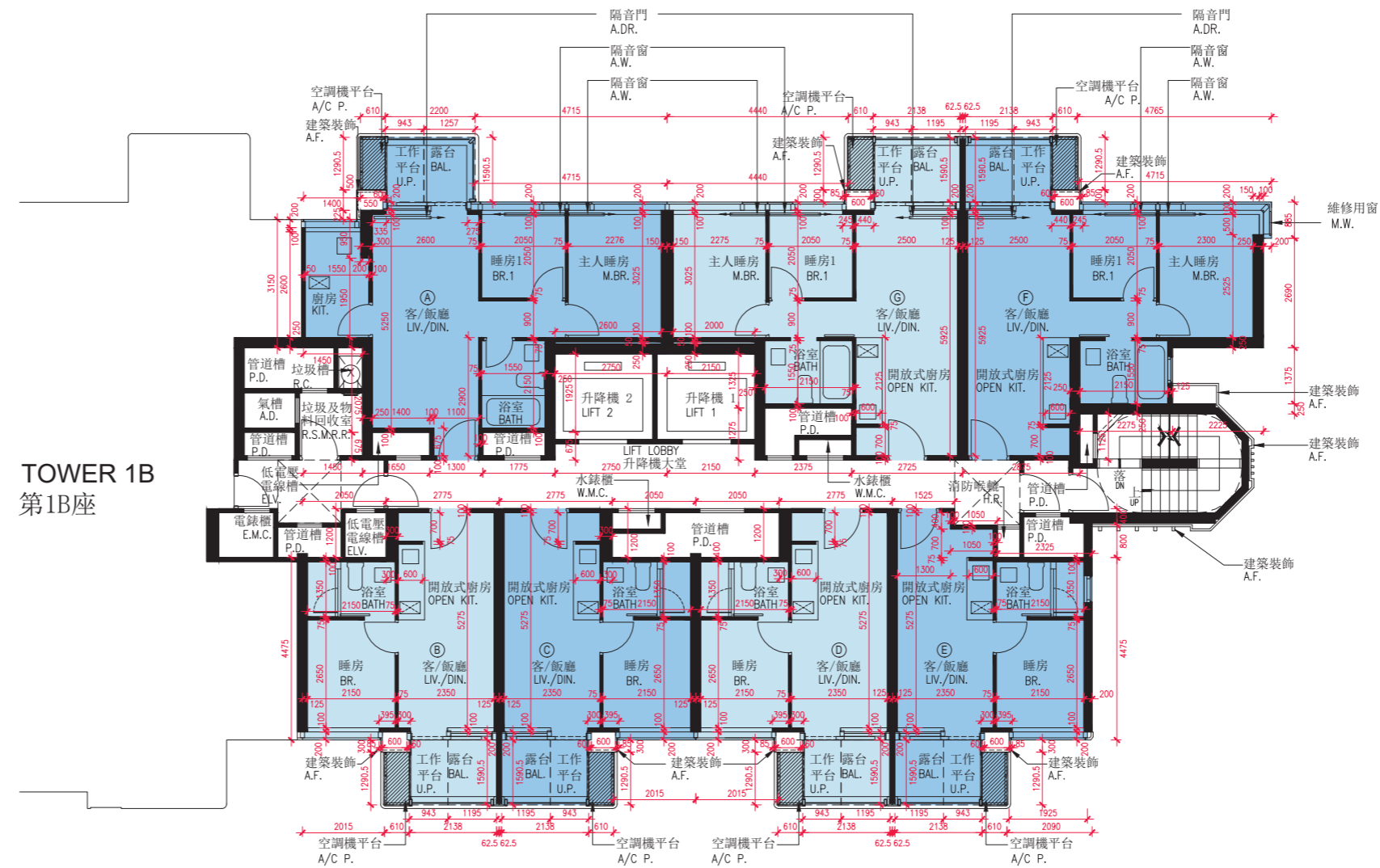
按發展項目的經批准的建築圖則所規定，發展項目每個住宅單位的樓板(不包括灰泥)的厚度及層與層之間的高度為：

Tower 大廈	Floor 樓層	Unit 單位	Thickness of the Floor Slabs (excluding plaster) (mm) 樓板 (不包括灰泥) 的厚度 (毫米)	Floor-to-floor Height (m) 層與層之間的高度 (米)
Tower 1A 第1A座	2/F 二樓	A	125, 150	3.150
		B	125, 150, 175	3.150
		C	125, 150, 175	3.150
		D	125, 150, 175	3.150
		E	125, 150, 175	3.150
		F	125, 150	3.150
		G	125, 150	3.150

The internal areas of the residential properties on the upper floors will generally be slightly larger than those on the lower floors because of the reducing thickness of the structural walls on the upper floors.

因住宅物業的較高樓層的結構牆的厚度遞減，較高樓層的内部面積，一般比較低樓層的内部面積稍大。

TOWER 1A
3/F & 5/F to 7/F
第1A座
三樓及五樓至七樓



Notes 附註:

- (1) The dimensions on the floor plans are all in millimetre.
樓面平面圖所列之所有尺寸均以毫米標示。
- (2) Please refer to page 19 of this sales brochure for legend of terms and abbreviations shown on floor plans.
樓面平面圖中的名稱及簡稱請參閱本售樓說明書第19頁。



11

FLOOR PLANS OF RESIDENTIAL PROPERTIES IN THE DEVELOPMENT

發展項目的住宅物業的樓面平面圖

The thickness of the floor slabs (excluding plaster) and floor-to-floor height of each residential property of the Development as provided in the approved building plans are:

按發展項目的經批准的建築圖則所規定，發展項目每個住宅單位的樓板(不包括灰泥)的厚度及層與層之間的高度為：

Tower 大廈	Floor 樓層	Unit 單位	Thickness of the Floor Slabs (excluding plaster) (mm) 樓板 (不包括灰泥) 的厚度 (毫米)	Floor-to-floor Height (m) 層與層之間的高度 (米)
Tower 1A 第1A座	3/F & 5/F to 7/F 三樓及五樓至七樓	A	125, 150	3.150
		B	125, 150, 175	3.150
		C	125, 150, 175	3.150
		D	125, 150, 175	3.150
		E	125, 150, 175	3.150
		F	125, 150	3.150
		G	125, 150	3.150

The internal areas of the residential properties on the upper floors will generally be slightly larger than those on the lower floors because of the reducing thickness of the structural walls on the upper floors.

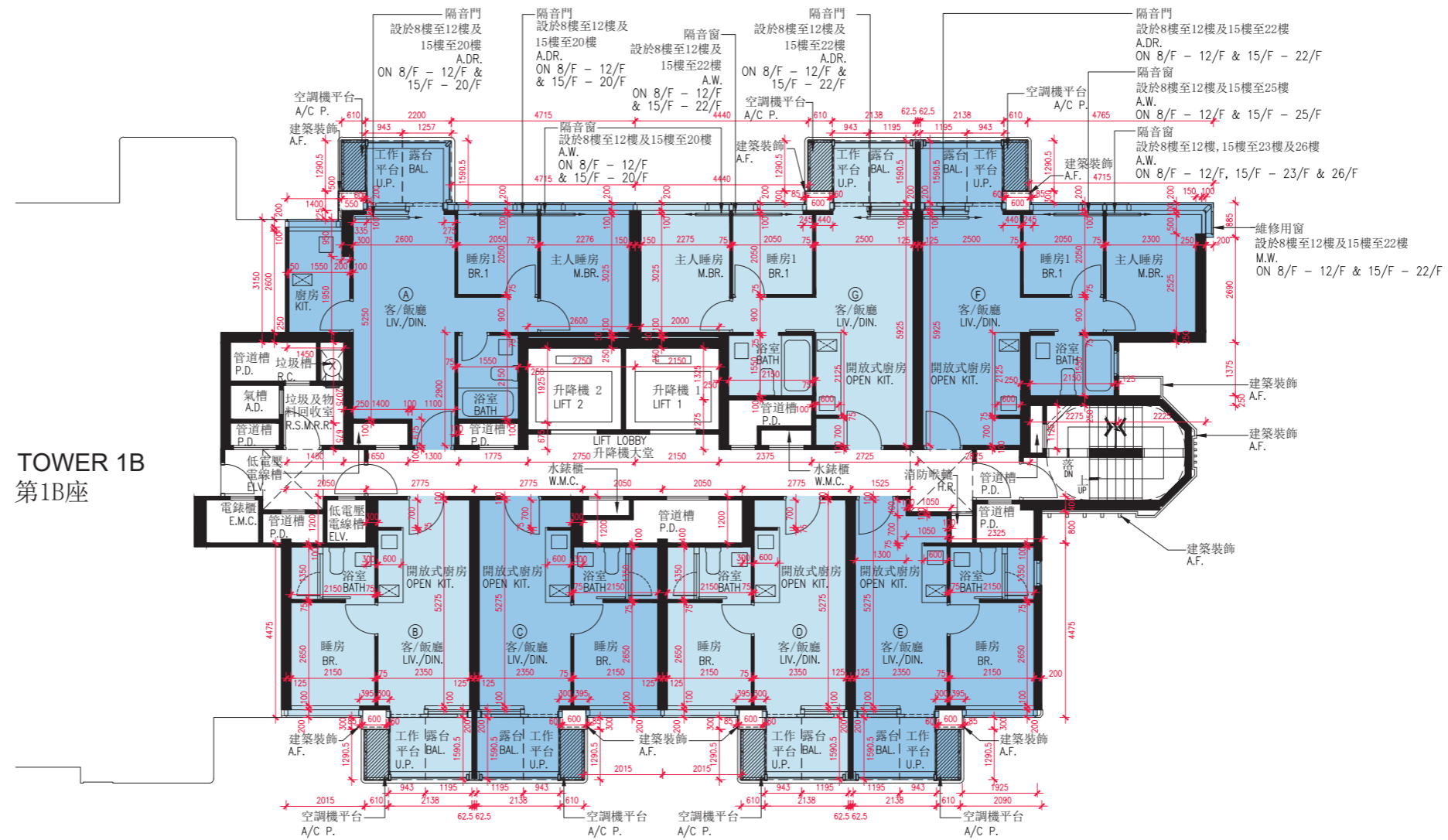
因住宅物業的較高樓層的結構牆的厚度遞減，較高樓層的内部面積，一般比較低樓層的内部面積稍大。

TOWER 1A

8/F to 12/F, 15/F to 23/F & 25/F to 29/F

第1A座

八樓至十二樓、十五樓至二十三樓及二十五樓至二十九樓



Notes 附註:

(1) The dimensions on the floor plans are all in millimetre.

樓面平面圖所列之所有尺寸均以毫米標示。

(2) Please refer to page 19 of this sales brochure for legend of terms and abbreviations shown on floor plans.

樓面平面圖中的名稱及簡稱請參閱本售樓說明書第19頁。



Scale 比例

11

FLOOR PLANS OF RESIDENTIAL PROPERTIES IN THE DEVELOPMENT

發展項目的住宅物業的樓面平面圖

The thickness of the floor slabs (excluding plaster) and floor-to-floor height of each residential property of the Development as provided in the approved building plans are:

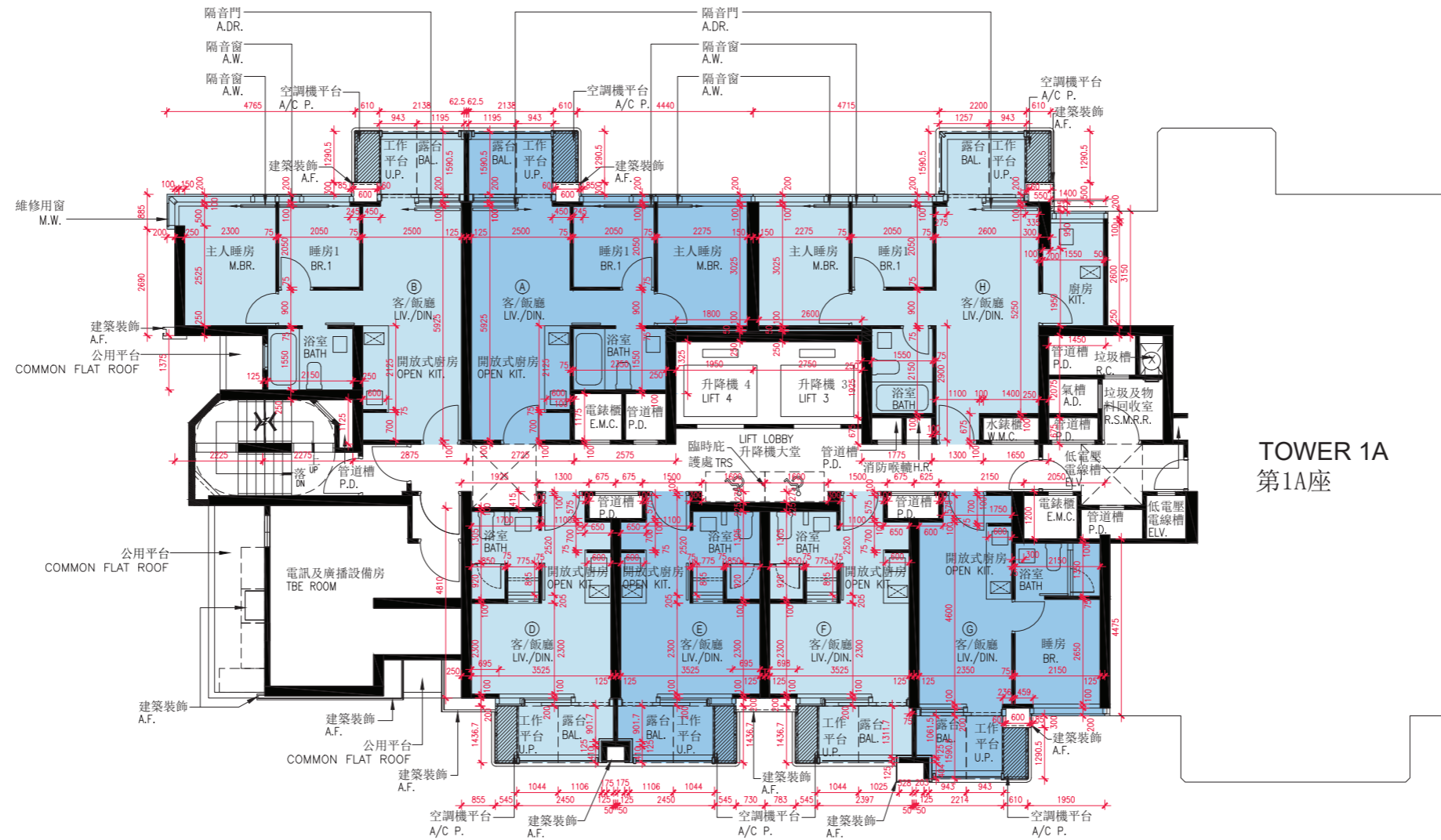
按發展項目的經批准的建築圖則所規定，發展項目每個住宅單位的樓板(不包括灰泥)的厚度及層與層之間的高度為：

Tower 大廈	Floor 樓層	Unit 單位	Thickness of the Floor Slabs (excluding plaster) (mm) 樓板 (不包括灰泥) 的厚度 (毫米)	Floor-to-floor Height (m) 層與層之間的高度 (米)
Tower 1A 第1A座	8/F to 12/F, 15/F to 23/F & 25/F to 28/F 八樓至十二樓、 十五樓至二十三樓及 二十五樓至二十八樓	A	125, 150	3.150
		B	125, 150, 175	3.150
		C	125, 150, 175	3.150
		D	125, 150, 175	3.150
		E	125, 150, 175	3.150
		F	125, 150	3.150
		G	125, 150	3.150
	29/F 二十九樓	A	125, 150	3.500, 3.750, 3.850
		B	125, 150, 175	3.500, 3.550, 3.750, 3.850, 3.900
		C	125, 150, 175	3.500, 3.550, 3.750, 3.850, 3.900
		D	125, 150, 175	3.500, 3.550, 3.750, 3.850, 3.900
		E	125, 150, 175	3.500, 3.550, 3.850, 3.900
		F	125, 150	3.500, 3.750, 3.850
		G	125, 150	3.500, 3.750, 3.850

The internal areas of the residential properties on the upper floors will generally be slightly larger than those on the lower floors because of the reducing thickness of the structural walls on the upper floors.

因住宅物業的較高樓層的結構牆的厚度遞減，較高樓層的內部面積，一般比較低樓層的內部面積稍大。

TOWER 1B
2/F
第1B座
二樓



TOWER 1A
第1A座

Notes 附註:

- (1) The dimensions on the floor plans are all in millimetre.
樓面平面圖所列之所有尺寸均以毫米標示。
- (2) Please refer to page 19 of this sales brochure for legend of terms and abbreviations shown on floor plans.
樓面平面圖中的名稱及簡稱請參閱本售樓說明書第19頁。



11

FLOOR PLANS OF RESIDENTIAL PROPERTIES IN THE DEVELOPMENT

發展項目的住宅物業的樓面平面圖

The thickness of the floor slabs (excluding plaster) and floor-to-floor height of each residential property of the Development as provided in the approved building plans are:

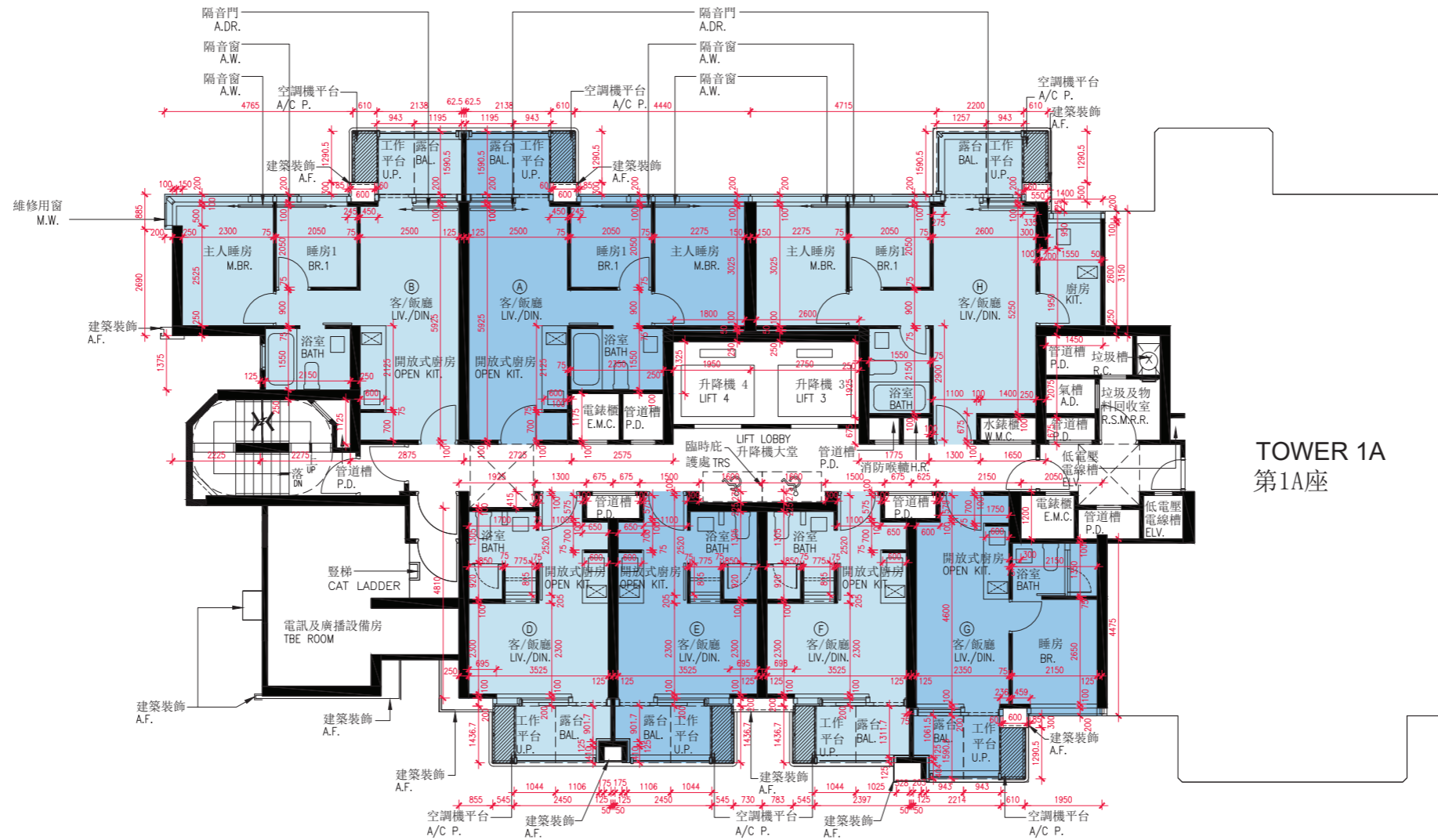
按發展項目的經批准的建築圖則所規定，發展項目每個住宅單位的樓板(不包括灰泥)的厚度及層與層之間的高度為：

Tower 大廈	Floor 樓層	Unit 單位	Thickness of the Floor Slabs (excluding plaster) (mm) 樓板 (不包括灰泥) 的厚度 (毫米)	Floor-to-floor Height (m) 層與層之間的高度 (米)
Tower 1B 第1B座	2/F 二樓	A	125, 150	3.150
		B	125, 150	3.150
		D	125, 150, 175	3.150
		E	125, 150, 175	3.150
		F	125, 150, 175	3.150
		G	125, 150, 175	3.150
		H	125, 150	3.150

The internal areas of the residential properties on the upper floors will generally be slightly larger than those on the lower floors because of the reducing thickness of the structural walls on the upper floors.

因住宅物業的較高樓層的結構牆的厚度遞減，較高樓層的内部面積，一般比較低樓層的内部面積稍大。

TOWER 1B
3/F
第1B座
三樓



TOWER 1A
第1A座

Notes 附註:

- (1) The dimensions on the floor plans are all in millimetre.
樓面平面圖所列之所有尺寸均以毫米標示。
- (2) Please refer to page 19 of this sales brochure for legend of terms and abbreviations shown on floor plans.
樓面平面圖中的名稱及簡稱請參閱本售樓說明書第19頁。



11

FLOOR PLANS OF RESIDENTIAL PROPERTIES IN THE DEVELOPMENT

發展項目的住宅物業的樓面平面圖

The thickness of the floor slabs (excluding plaster) and floor-to-floor height of each residential property of the Development as provided in the approved building plans are:

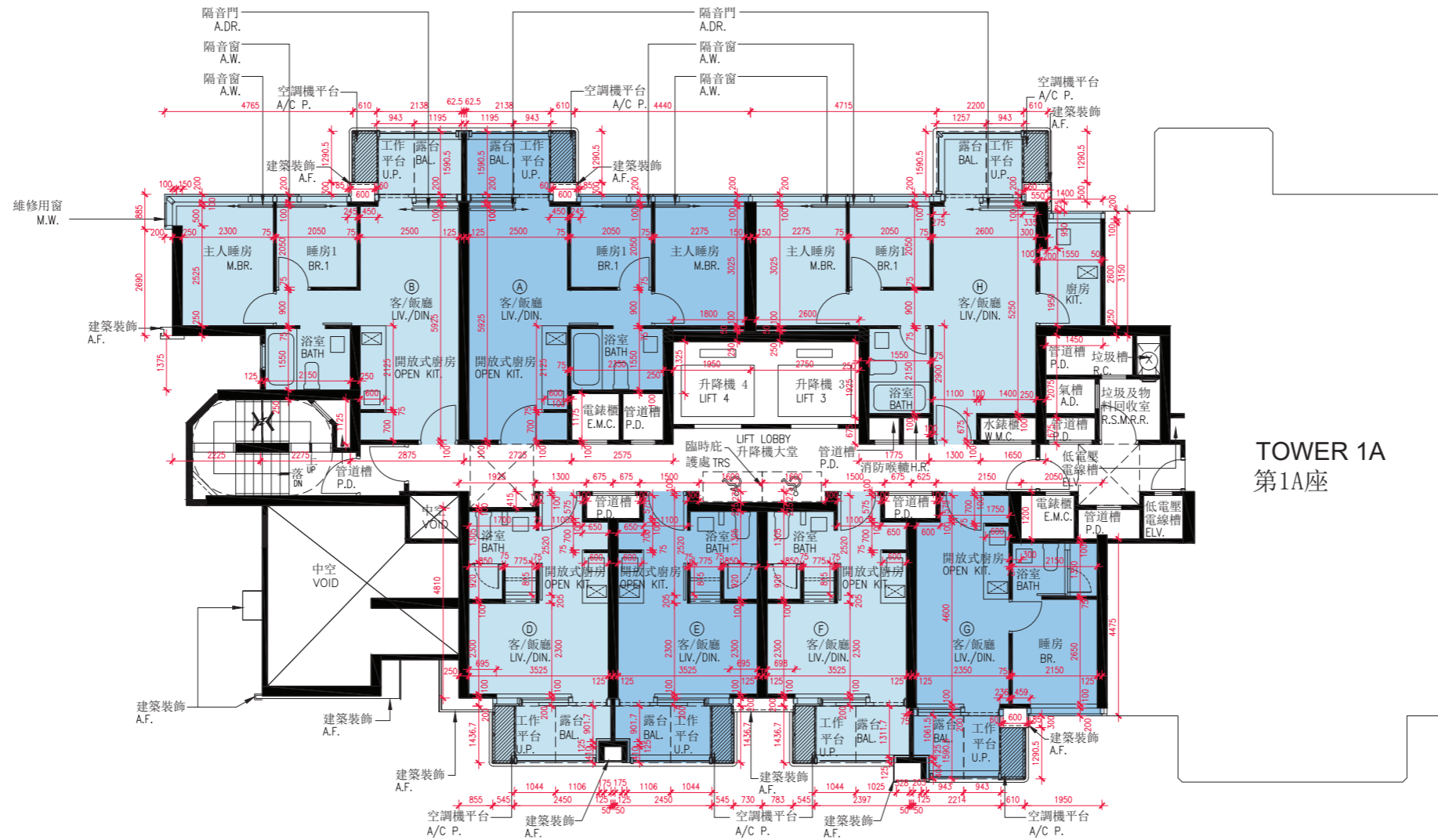
按發展項目的經批准的建築圖則所規定，發展項目每個住宅單位的樓板(不包括灰泥)的厚度及層與層之間的高度為：

Tower 大廈	Floor 樓層	Unit 單位	Thickness of the Floor Slabs (excluding plaster) (mm) 樓板 (不包括灰泥) 的厚度 (毫米)	Floor-to-floor Height (m) 層與層之間的高度 (米)
Tower 1B 第1B座	3/F 三樓	A	125, 150	3.150
		B	125, 150	3.150
		D	125, 150, 175	3.150
		E	125, 150, 175	3.150
		F	125, 150, 175	3.150
		G	125, 150, 175	3.150
		H	125, 150	3.150

The internal areas of the residential properties on the upper floors will generally be slightly larger than those on the lower floors because of the reducing thickness of the structural walls on the upper floors.

因住宅物業的較高樓層的結構牆的厚度遞減，較高樓層的内部面積，一般比較低樓層的内部面積稍大。

TOWER 1B
5/F
第1B座
五樓



TOWER 1A
第1A座

Notes 附註:

- (1) The dimensions on the floor plans are all in millimetre.
樓面平面圖所列之所有尺寸均以毫米標示。
- (2) Please refer to page 19 of this sales brochure for legend of terms and abbreviations shown on floor plans.
樓面平面圖中的名稱及簡稱請參閱本售樓說明書第19頁。



The thickness of the floor slabs (excluding plaster) and floor-to-floor height of each residential property of the Development as provided in the approved building plans are:

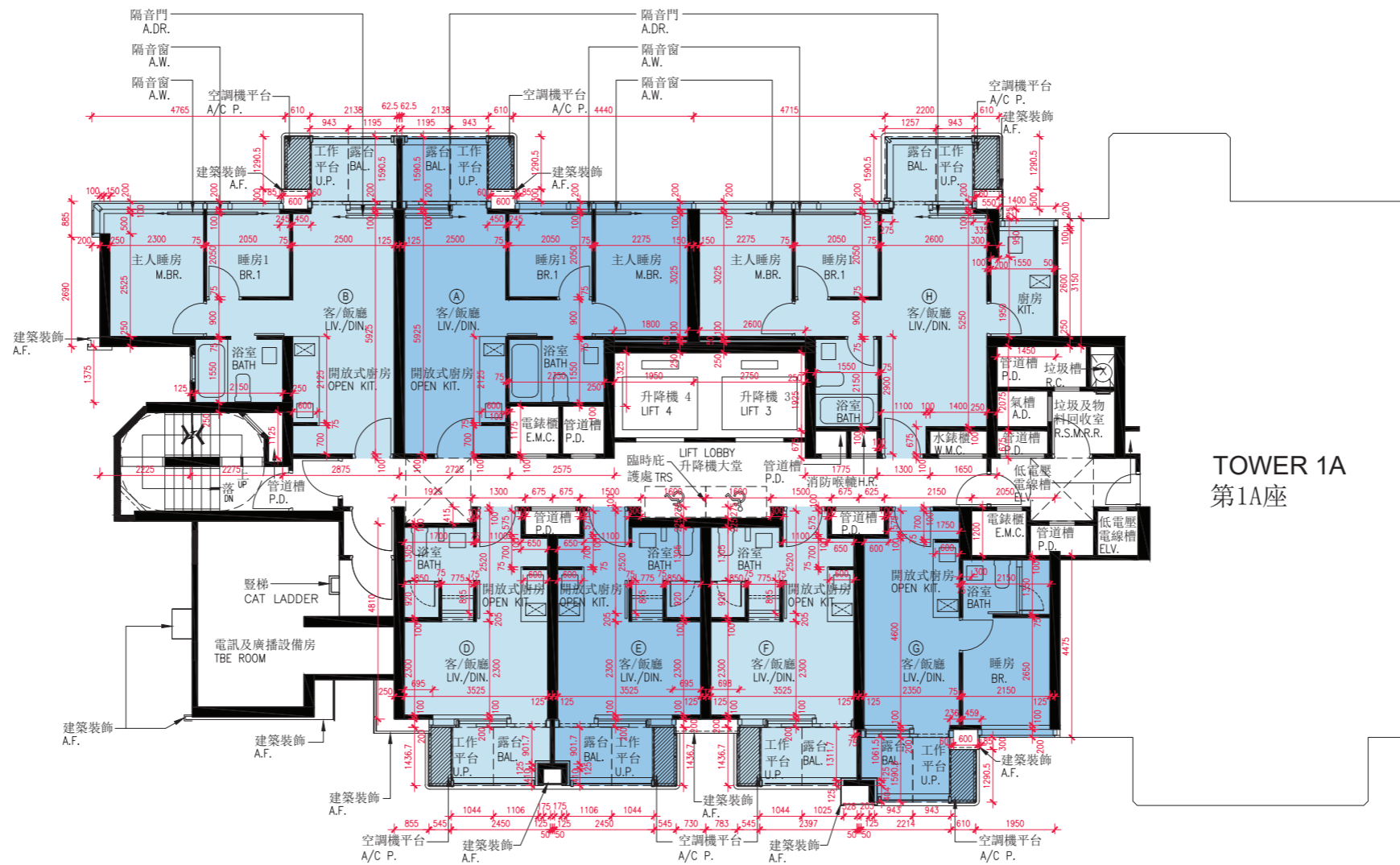
按發展項目的經批准的建築圖則所規定，發展項目每個住宅單位的樓板(不包括灰泥)的厚度及層與層之間的高度為：

Tower 大廈	Floor 樓層	Unit 單位	Thickness of the Floor Slabs (excluding plaster) (mm) 樓板 (不包括灰泥) 的厚度 (毫米)	Floor-to-floor Height (m) 層與層之間的高度 (米)
Tower 1B 第1B座	5/F 五樓	A	125, 150	3.150
		B	125, 150	3.150
		D	125, 150, 175	3.150
		E	125, 150, 175	3.150
		F	125, 150, 175	3.150
		G	125, 150, 175	3.150
		H	125, 150	3.150

The internal areas of the residential properties on the upper floors will generally be slightly larger than those on the lower floors because of the reducing thickness of the structural walls on the upper floors.

因住宅物業的較高樓層的結構牆的厚度遞減，較高樓層的内部面積，一般比較低樓層的内部面積稍大。

TOWER 1B
6/F
第1B座
六樓



TOWER 1A
第1A座

Notes 附註:

- (1) The dimensions on the floor plans are all in millimetre.
樓面平面圖所列之所有尺寸均以毫米標示。
- (2) Please refer to page 19 of this sales brochure for legend of terms and abbreviations shown on floor plans.
樓面平面圖中的名稱及簡稱請參閱本售樓說明書第19頁。



11

FLOOR PLANS OF RESIDENTIAL PROPERTIES IN THE DEVELOPMENT

發展項目的住宅物業的樓面平面圖

The thickness of the floor slabs (excluding plaster) and floor-to-floor height of each residential property of the Development as provided in the approved building plans are:

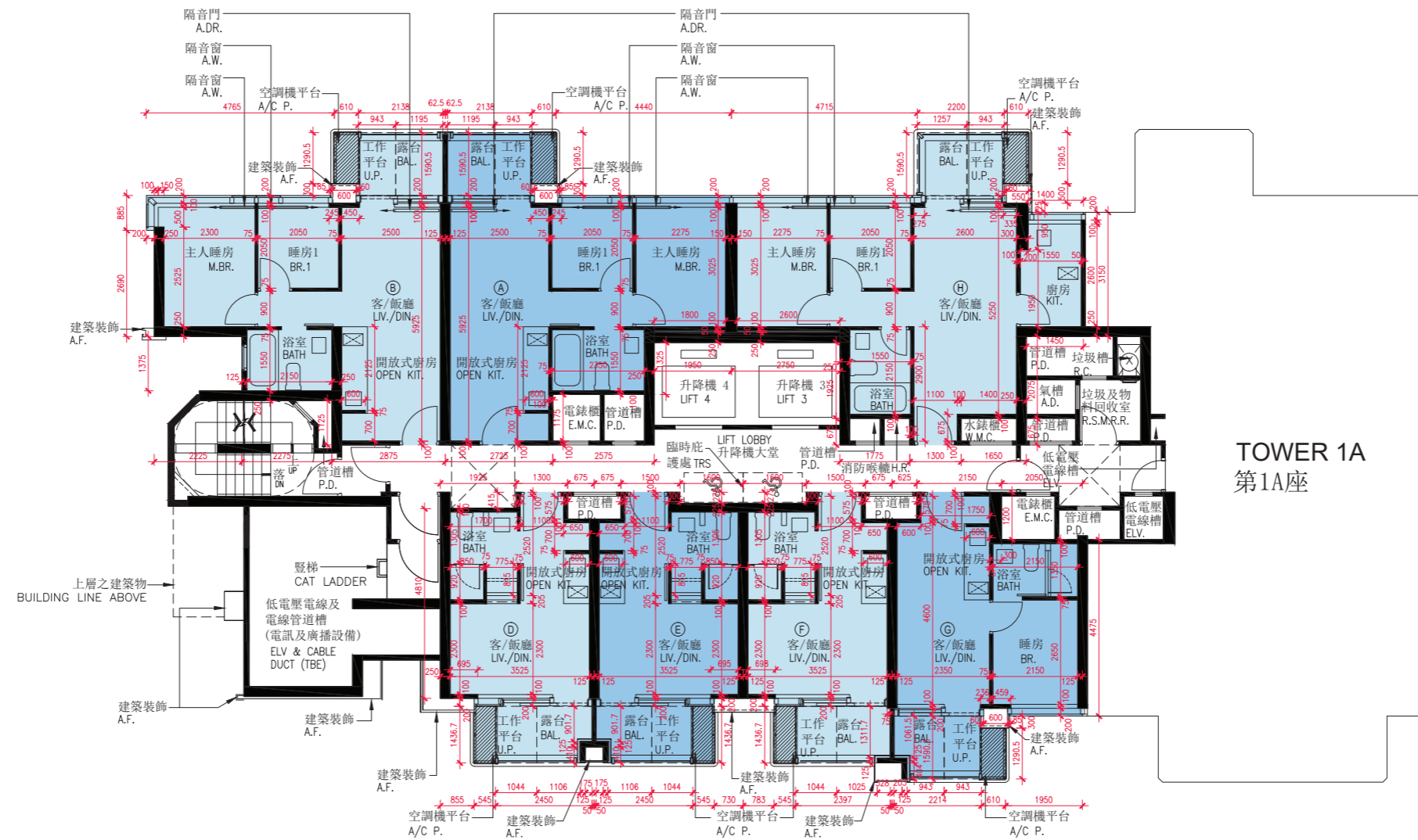
按發展項目的經批准的建築圖則所規定，發展項目每個住宅單位的樓板(不包括灰泥)的厚度及層與層之間的高度為：

Tower 大廈	Floor 樓層	Unit 單位	Thickness of the Floor Slabs (excluding plaster) (mm) 樓板 (不包括灰泥) 的厚度 (毫米)	Floor-to-floor Height (m) 層與層之間的高度 (米)
Tower 1B 第1B座	6/F 六樓	A	125, 150	3.150
		B	125, 150	3.150
		D	125, 150, 175	3.150
		E	125, 150, 175	3.150
		F	125, 150, 175	3.150
		G	125, 150, 175	3.150
		H	125, 150	3.150

The internal areas of the residential properties on the upper floors will generally be slightly larger than those on the lower floors because of the reducing thickness of the structural walls on the upper floors.

因住宅物業的較高樓層的結構牆的厚度遞減，較高樓層的内部面積，一般比較低樓層的内部面積稍大。

TOWER 1B
7/F
第1B座
七樓



TOWER 1A
第1A座

Notes 附註:

- (1) The dimensions on the floor plans are all in millimetre.
樓面平面圖所列之所有尺寸均以毫米標示。
- (2) Please refer to page 19 of this sales brochure for legend of terms and abbreviations shown on floor plans.
樓面平面圖中的名稱及簡稱請參閱本售樓說明書第19頁。



11

FLOOR PLANS OF RESIDENTIAL PROPERTIES IN THE DEVELOPMENT

發展項目的住宅物業的樓面平面圖

The thickness of the floor slabs (excluding plaster) and floor-to-floor height of each residential property of the Development as provided in the approved building plans are:

按發展項目的經批准的建築圖則所規定，發展項目每個住宅單位的樓板(不包括灰泥)的厚度及層與層之間的高度為：

Tower 大廈	Floor 樓層	Unit 單位	Thickness of the Floor Slabs (excluding plaster) (mm) 樓板 (不包括灰泥) 的厚度 (毫米)	Floor-to-floor Height (m) 層與層之間的高度 (米)
Tower 1B 第1B座	7/F 七樓	A	125, 150	3.150
		B	125, 150	3.150
		D	125, 150, 175	3.150
		E	125, 150, 175	3.150
		F	125, 150, 175	3.150
		G	125, 150, 175	3.150
		H	125, 150	3.150

The internal areas of the residential properties on the upper floors will generally be slightly larger than those on the lower floors because of the reducing thickness of the structural walls on the upper floors.

因住宅物業的較高樓層的結構牆的厚度遞減，較高樓層的内部面積，一般比較低樓層的内部面積稍大。

11

FLOOR PLANS OF RESIDENTIAL PROPERTIES IN THE DEVELOPMENT

發展項目的住宅物業的樓面平面圖

The thickness of the floor slabs (excluding plaster) and floor-to-floor height of each residential property of the Development as provided in the approved building plans are:

按發展項目的經批准的建築圖則所規定，發展項目每個住宅單位的樓板(不包括灰泥)的厚度及層與層之間的高度為：

Tower 大廈	Floor 樓層	Unit 單位	Thickness of the Floor Slabs (excluding plaster) (mm) 樓板 (不包括灰泥) 的厚度 (毫米)	Floor-to-floor Height (m) 層與層之間的高度 (米)
Tower 1B 第1B座	8/F to 12/F, 15/F to 23/F & 25/F to 28/F 八樓至十二樓、 十五樓至二十三樓及 二十五樓至二十八樓	A	125, 150	3.150
		B	125, 150	3.150
		C	125, 150, 175	3.150
		D	125, 150, 175	3.150
		E	125, 150, 175	3.150
		F	125, 150, 175	3.150
		G	125, 150, 175	3.150
		H	125, 150	3.150
	29/F 二十九樓	A	125, 150	3.500, 3.750, 3.850
		B	125, 150	3.500, 3.750, 3.850
		C	125, 150, 175	3.500, 3.750, 3.850, 3.900
		D	125, 150, 175	3.500, 3.750, 3.800, 3.850
		E	125, 150, 175	3.500, 3.750, 3.800, 3.850
		F	125, 150, 175	3.500, 3.750, 3.800, 3.850
		G	125, 150, 175	3.500, 3.550, 3.750, 3.850, 3.900
		H	125, 150	3.500, 3.750, 3.850

The internal areas of the residential properties on the upper floors will generally be slightly larger than those on the lower floors because of the reducing thickness of the structural walls on the upper floors.

因住宅物業的較高樓層的結構牆的厚度遞減，較高樓層的內部面積，一般比較低樓層的內部面積稍大。

TOWER 2A
2/F
第2A座
二樓



Notes 附註:

- (1) The dimensions on the floor plans are all in millimetre.
樓面平面圖所列之所有尺寸均以毫米標示。
- (2) Please refer to page 19 of this sales brochure for legend of terms and abbreviations shown on floor plans.
樓面平面圖中的名稱及簡稱請參閱本售樓說明書第19頁。



11

FLOOR PLANS OF RESIDENTIAL PROPERTIES IN THE DEVELOPMENT

發展項目的住宅物業的樓面平面圖

The thickness of the floor slabs (excluding plaster) and floor-to-floor height of each residential property of the Development as provided in the approved building plans are:

按發展項目的經批准的建築圖則所規定，發展項目每個住宅單位的樓板(不包括灰泥)的厚度及層與層之間的高度為：

Tower 大廈	Floor 樓層	Unit 單位	Thickness of the Floor Slabs (excluding plaster) (mm) 樓板 (不包括灰泥) 的厚度 (毫米)	Floor-to-floor Height (m) 層與層之間的高度 (米)
Tower 2A 第2A座	2/F 二樓	A	125, 150	3.125
		B	125, 150	3.125
		C	125, 150, 175	3.125
		D	125, 150, 175	3.125
		E	125, 150, 175	3.125
		F	125, 150, 175	3.125
		G	125, 150	3.125

The internal areas of the residential properties on the upper floors will generally be slightly larger than those on the lower floors because of the reducing thickness of the structural walls on the upper floors.

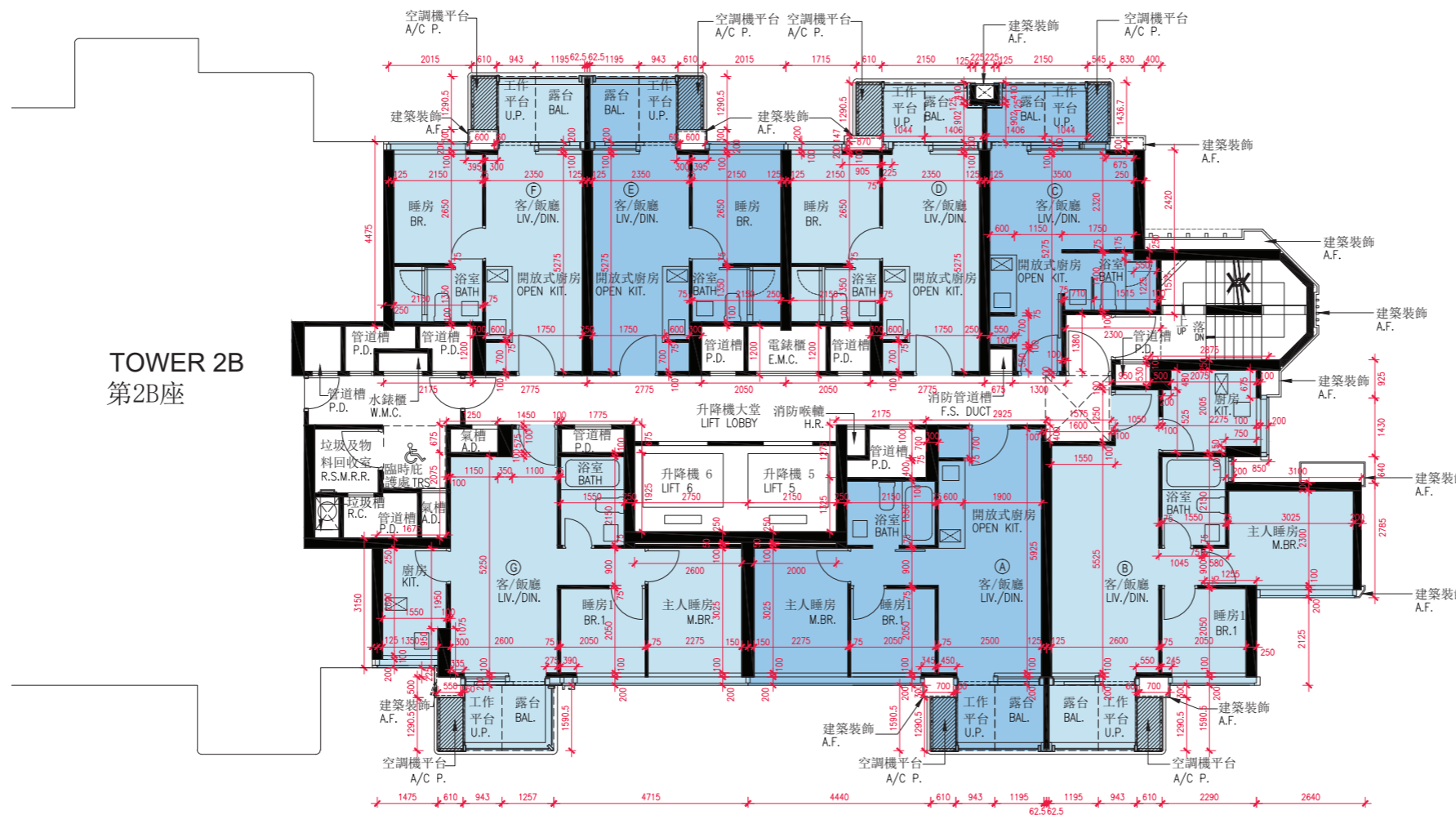
因住宅物業的較高樓層的結構牆的厚度遞減，較高樓層的内部面積，一般比較低樓層的内部面積稍大。

TOWER 2A

3/F, 5/F to 12/F, 15/F to 23/F & 25/F to 29/F

第2A座

三樓、五樓至十二樓、十五樓至二十三樓及二十五樓至二十九樓



Notes 附註:

- (1) The dimensions on the floor plans are all in millimetre.
樓面平面圖所列之所有尺寸均以毫米標示。
- (2) Please refer to page 19 of this sales brochure for legend of terms and abbreviations shown on floor plans.
樓面平面圖中的名稱及簡稱請參閱本售樓說明書第19頁。



11

FLOOR PLANS OF RESIDENTIAL PROPERTIES IN THE DEVELOPMENT

發展項目的住宅物業的樓面平面圖

The thickness of the floor slabs (excluding plaster) and floor-to-floor height of each residential property of the Development as provided in the approved building plans are:

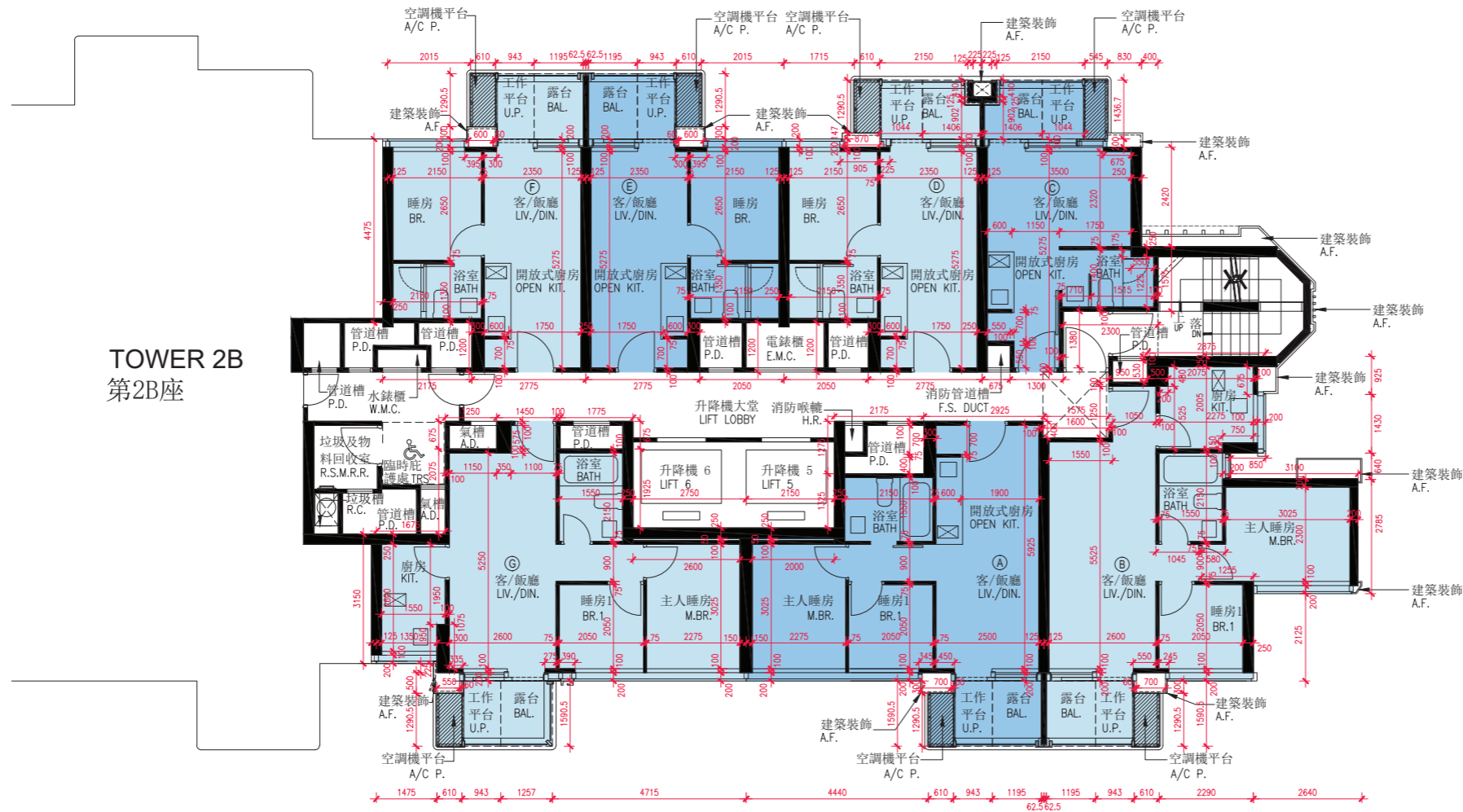
按發展項目的經批准的建築圖則所規定，發展項目每個住宅單位的樓板(不包括灰泥)的厚度及層與層之間的高度為：

Tower 大廈	Floor 樓層	Unit 單位	Thickness of the Floor Slabs (excluding plaster) (mm) 樓板 (不包括灰泥) 的厚度 (毫米)	Floor-to-floor Height (m) 層與層之間的高度 (米)
Tower 2A 第2A座	3/F, 5/F to 12/F, 15/F to 23/F & 25/F to 29/F 三樓、五樓至十二樓、 十五樓至二十三樓及 二十五樓至二十九樓	A	125, 150	3.125
		B	125, 150	3.125
		C	125, 150, 175	3.125
		D	125, 150, 175	3.125
		E	125, 150, 175	3.125
		F	125, 150, 175	3.125
		G	125, 150	3.125

The internal areas of the residential properties on the upper floors will generally be slightly larger than those on the lower floors because of the reducing thickness of the structural walls on the upper floors.

因住宅物業的較高樓層的結構牆的厚度遞減，較高樓層的內部面積，一般比較低樓層的內部面積稍大。

TOWER 2A
30/F
第2A座
三十樓



Notes 附註:

- (1) The dimensions on the floor plans are all in millimetre.
樓面平面圖所列之所有尺寸均以毫米標示。
- (2) Please refer to page 19 of this sales brochure for legend of terms and abbreviations shown on floor plans.
樓面平面圖中的名稱及簡稱請參閱本售樓說明書第19頁。



11

FLOOR PLANS OF RESIDENTIAL PROPERTIES IN THE DEVELOPMENT

發展項目的住宅物業的樓面平面圖

The thickness of the floor slabs (excluding plaster) and floor-to-floor height of each residential property of the Development as provided in the approved building plans are:

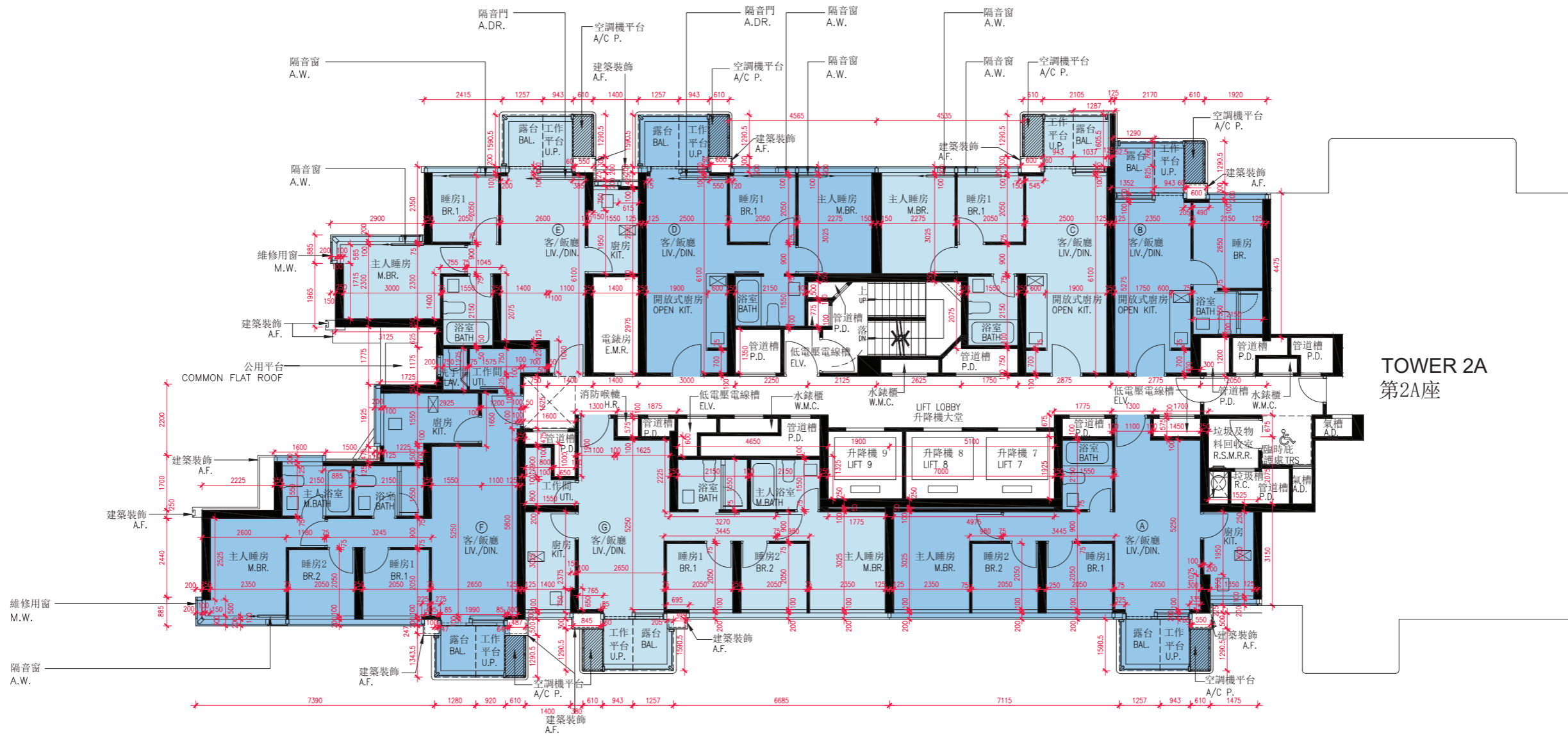
按發展項目的經批准的建築圖則所規定，發展項目每個住宅單位的樓板(不包括灰泥)的厚度及層與層之間的高度為：

Tower 大廈	Floor 樓層	Unit 單位	Thickness of the Floor Slabs (excluding plaster) (mm) 樓板 (不包括灰泥) 的厚度 (毫米)	Floor-to-floor Height (m) 層與層之間的高度 (米)
Tower 2A 第2A座	30/F 三十樓	A	125, 150	3.500, 3.750, 3.850
		B	125, 150	3.500, 3.750, 3.850
		C	125, 150, 175	3.500, 3.550, 3.750, 3.800, 3.850, 3.900
		D	125, 150, 175	3.500, 3.550, 3.750, 3.850, 3.900
		E	125, 150, 175	3.500, 3.550, 3.750, 3.850, 3.900
		F	125, 150, 175	3.500, 3.550, 3.750, 3.850, 3.900
		G	125, 150	3.500, 3.750, 3.850

The internal areas of the residential properties on the upper floors will generally be slightly larger than those on the lower floors because of the reducing thickness of the structural walls on the upper floors.

因住宅物業的較高樓層的結構牆的厚度遞減，較高樓層的内部面積，一般比較低樓層的内部面積稍大。

TOWER 2B
2/F
第2B座
二樓



TOWER 2A
第2A座

Notes 附註:

- (1) The dimensions on the floor plans are all in millimetre.
樓面平面圖所列之所有尺寸均以毫米標示。
- (2) Please refer to page 19 of this sales brochure for legend of terms and abbreviations shown on floor plans.
樓面平面圖中的名稱及簡稱請參閱本售樓說明書第19頁。



11

FLOOR PLANS OF RESIDENTIAL PROPERTIES IN THE DEVELOPMENT

發展項目的住宅物業的樓面平面圖

The thickness of the floor slabs (excluding plaster) and floor-to-floor height of each residential property of the Development as provided in the approved building plans are:

按發展項目的經批准的建築圖則所規定，發展項目每個住宅單位的樓板(不包括灰泥)的厚度及層與層之間的高度為：

Tower 大廈	Floor 樓層	Unit 單位	Thickness of the Floor Slabs (excluding plaster) (mm) 樓板 (不包括灰泥) 的厚度 (毫米)	Floor-to-floor Height (m) 層與層之間的高度 (米)
Tower 2B 第2B座	2/F 二樓	A	125, 150, 175	3.125
		B	125, 150, 175	3.125
		C	125, 150	3.125
		D	125, 150	3.125
		E	125, 150	3.125
		F	125, 150	3.125
		G	125, 150, 175	3.125

The internal areas of the residential properties on the upper floors will generally be slightly larger than those on the lower floors because of the reducing thickness of the structural walls on the upper floors.

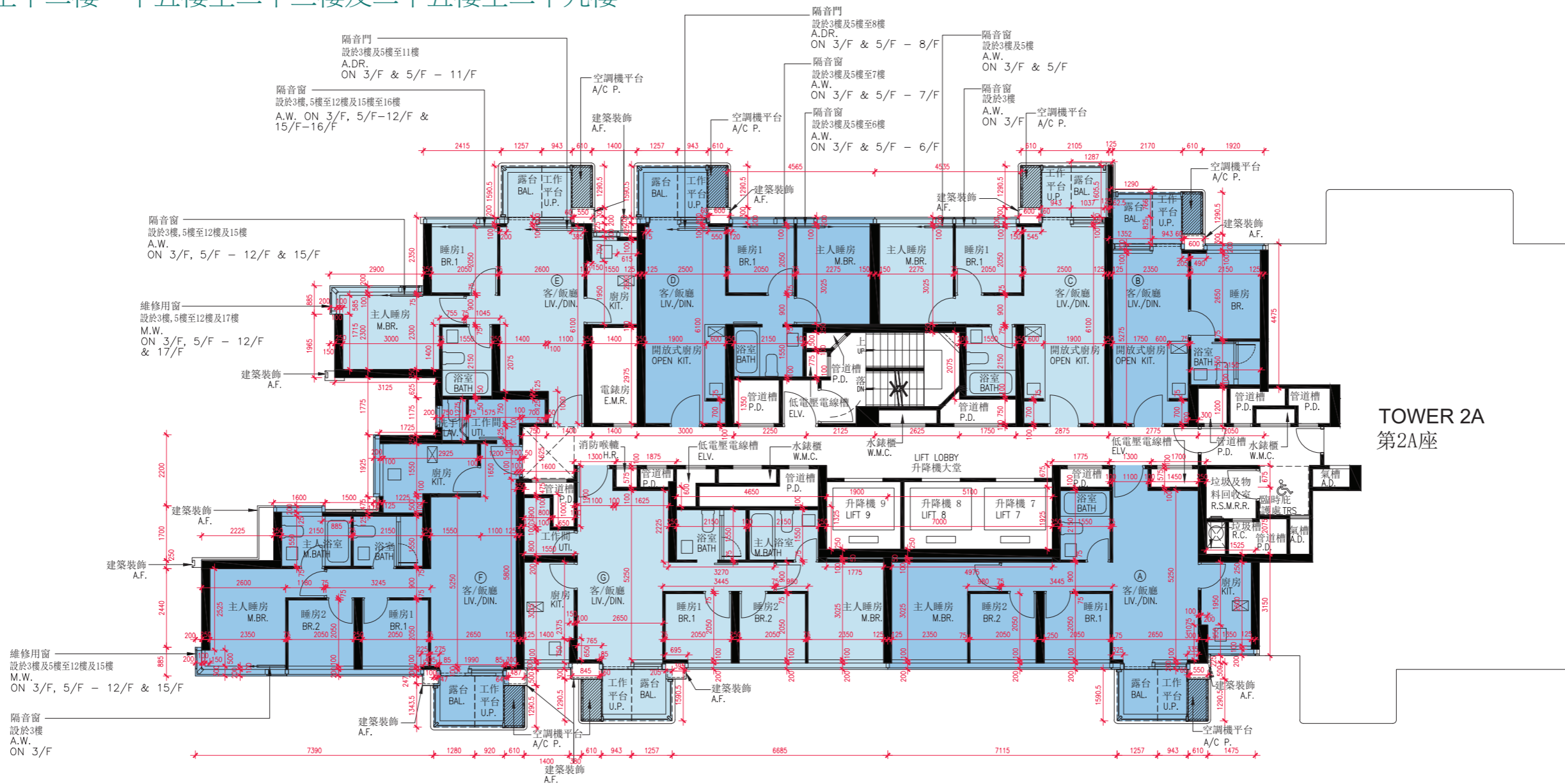
因住宅物業的較高樓層的結構牆的厚度遞減，較高樓層的内部面積，一般比較低樓層的内部面積稍大。

TOWER 2B

3/F, 5/F to 12/F, 15/F to 23/F & 25/F to 29/F

第2B座

三樓、五樓至十二樓、十五樓至二十三樓及二十五樓至二十九樓



TOWER 2A
第2A座

Notes 附註:

- (1) The dimensions on the floor plans are all in millimetre.
樓面平面圖所列之所有尺寸均以毫米標示。
- (2) Please refer to page 19 of this sales brochure for legend of terms and abbreviations shown on floor plans.
樓面平面圖中的名稱及簡稱請參閱本售樓說明書第19頁。



11

FLOOR PLANS OF RESIDENTIAL PROPERTIES IN THE DEVELOPMENT

發展項目的住宅物業的樓面平面圖

The thickness of the floor slabs (excluding plaster) and floor-to-floor height of each residential property of the Development as provided in the approved building plans are:

按發展項目的經批准的建築圖則所規定，發展項目每個住宅單位的樓板(不包括灰泥)的厚度及層與層之間的高度為：

Tower 大廈	Floor 樓層	Unit 單位	Thickness of the Floor Slabs (excluding plaster) (mm) 樓板 (不包括灰泥) 的厚度 (毫米)	Floor-to-floor Height (m) 層與層之間的高度 (米)
Tower 2B 第2B座	3/F, 5/F to 12/F, 15/F to 23/F & 25/F to 28/F 三樓、五樓至十二樓、 十五樓至二十三樓及 二十五樓至二十八樓	A	125, 150, 175	3.125
		B	125, 150, 175	3.125
		C	125, 150	3.125
		D	125, 150	3.125
		E	125, 150	3.125
		F	125, 150	3.125
		G	125, 150, 175	3.125
	29/F 二十九樓	A	125, 150, 175	3.125
		B	125, 150, 175	3.125
		C	125, 150	3.125
		D	125, 150	3.125, 3.375, 3.475
		E	125, 150	3.125
		F	125, 150	3.075, 3.125, 3.175, 3.375, 3.425, 3.475, 3.525, 3.625, 3.725, 3.825
		G	125, 150, 175	3.125, 3.175, 3.475, 3.525, 3.725, 3.775, 3.825

The internal areas of the residential properties on the upper floors will generally be slightly larger than those on the lower floors because of the reducing thickness of the structural walls on the upper floors.

因住宅物業的較高樓層的結構牆的厚度遞減，較高樓層的內部面積，一般比較低樓層的內部面積稍大。

TOWER 2B

Unit F on 21/F (As-is Floor Plan)

第2B座

二十一樓 F 單位 (現狀樓面平面圖)



TOWER 2A
第2A座

Notes 附註:

- (1) The dimensions on the floor plans are all in millimetre.
樓面平面圖所列之所有尺寸均以毫米標示。
- (2) Please refer to page 19 of this sales brochure for legend of terms and abbreviations shown on floor plans.
樓面平面圖中的名稱及簡稱請參閱本售樓說明書第19頁。
- (3) This plan is for showing the as-is layout of Unit F on 21/F of Tower 2B. For the floor plans of the other units on 21/F of Tower 2B, please refer to page 46 of this sales brochure.
此圖旨在顯示第2B座21樓F單位的現狀布局。有關第2B座21樓其他單位的樓面平面圖請參閱本售樓說明書第46頁。



Unit F on 21/F of Tower 2B has been altered by way of exempted works and minor works under the Buildings Ordinance after completion of the Development. The approximate location of the alterations is indicated on the as-is floor plan and the details of the alterations are set out below (the below numbering refers to the marked alterations on the plan):

- a. Removal of a part of non-load bearing block wall and erection of new fire-rated glass partition.
- b. Removal of a fire rated door and erection of a new fire rated glass door.

第2B座21樓F單位在發展項目落成後經獲《建築物條例》豁免工程及小型工程改動。該等改動的大約位置於現狀樓面平面圖中標出。該等改動詳情列出如下(下文編號對應圖中改動編號)：

- a. 移除部份非承重磚牆及豎立新防火玻璃間隔。
- b. 移除防火門及豎立新防火玻璃門。

11

FLOOR PLANS OF RESIDENTIAL PROPERTIES IN THE DEVELOPMENT

發展項目的住宅物業的樓面平面圖

The thickness of the floor slabs (excluding plaster) and floor-to-floor height of each residential property of the Development as provided in the approved building plans are:

按發展項目的經批准的建築圖則所規定，發展項目每個住宅單位的樓板(不包括灰泥)的厚度及層與層之間的高度為：

Tower 大廈	Floor 樓層	Unit 單位	Thickness of the Floor Slabs (excluding plaster) (mm) 樓板 (不包括灰泥) 的厚度 (毫米)	Floor-to-floor Height (m) 層與層之間的高度 (米)
Tower 2B 第2B座	30/F 三十樓	A	125, 150, 175	3.500, 3.750, 3.850
		B	125, 150, 175	3.500, 3.550, 3.750, 3.850, 3.900
		C	125, 150	3.500, 3.750, 3.850
		D	125, 150, 175	3.325, 3.500, 3.550, 3.600, 3.800, 3.850, 3.900

The internal areas of the residential properties on the upper floors will generally be slightly larger than those on the lower floors because of the reducing thickness of the structural walls on the upper floors.

因住宅物業的較高樓層的結構牆的厚度遞減，較高樓層的內部面積，一般比較低樓層的內部面積稍大。

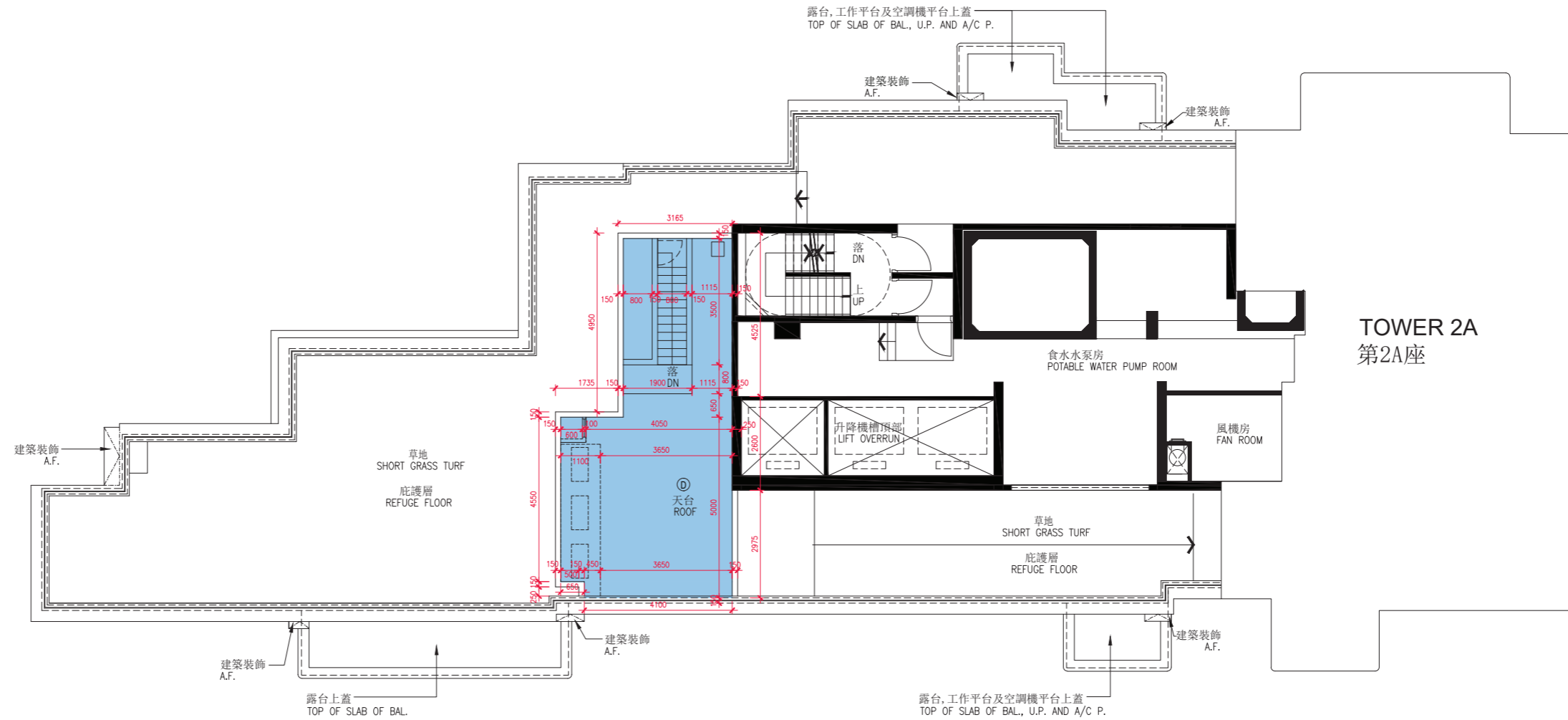
Unit D on 30/F of Tower 2B has been altered by way of exempted works and minor works under the Buildings Ordinance after completion of the Development. The approximate location of the alterations is indicated on the as-is floor plan and the details of the alterations are set out below (the below numbering refers to the marked alterations on the plan):

- a. Erection of dry wall partition.
- b. Installation of timber veneer finished hollow core timber door.

第2B座30樓D單位在發展項目落成後經獲《建築物條例》豁免工程及小型工程改動。該等改動的大約位置於現狀樓面平面圖中標出。該等改動詳情列出如下(下文編號對應圖中改動編號)：

- a. 豎立輕隔間牆。
- b. 安裝空心木門配木皮飾面。

TOWER 2B
ROOF
第2B座
天台



TOWER 2A
第2A座

Notes 附註:

- (1) The dimensions on the floor plans are all in millimetre.
樓面平面圖所列之所有尺寸均以毫米標示。
- (2) Please refer to page 19 of this sales brochure for legend of terms and abbreviations shown on floor plans.
樓面平面圖中的名稱及簡稱請參閱本售樓說明書第19頁。



11

FLOOR PLANS OF RESIDENTIAL PROPERTIES IN THE DEVELOPMENT

發展項目的住宅物業的樓面平面圖

The thickness of the floor slabs (excluding plaster) and floor-to-floor height of each residential property of the Development as provided in the approved building plans are:

按發展項目的經批准的建築圖則所規定，發展項目每個住宅單位的樓板(不包括灰泥)的厚度及層與層之間的高度為：

Tower 大廈	Floor 樓層	Unit 單位	Thickness of the Floor Slabs (excluding plaster) (mm) 樓板 (不包括灰泥) 的厚度 (毫米)	Floor-to-floor Height (m) 層與層之間的高度 (米)
Tower 2B 第2B座	Roof 天台	D	Not Applicable 不適用	Not Applicable 不適用

The internal areas of the residential properties on the upper floors will generally be slightly larger than those on the lower floors because of the reducing thickness of the structural walls on the upper floors.

因住宅物業的較高樓層的結構牆的厚度遞減，較高樓層的內部面積，一般比較低樓層的內部面積稍大。