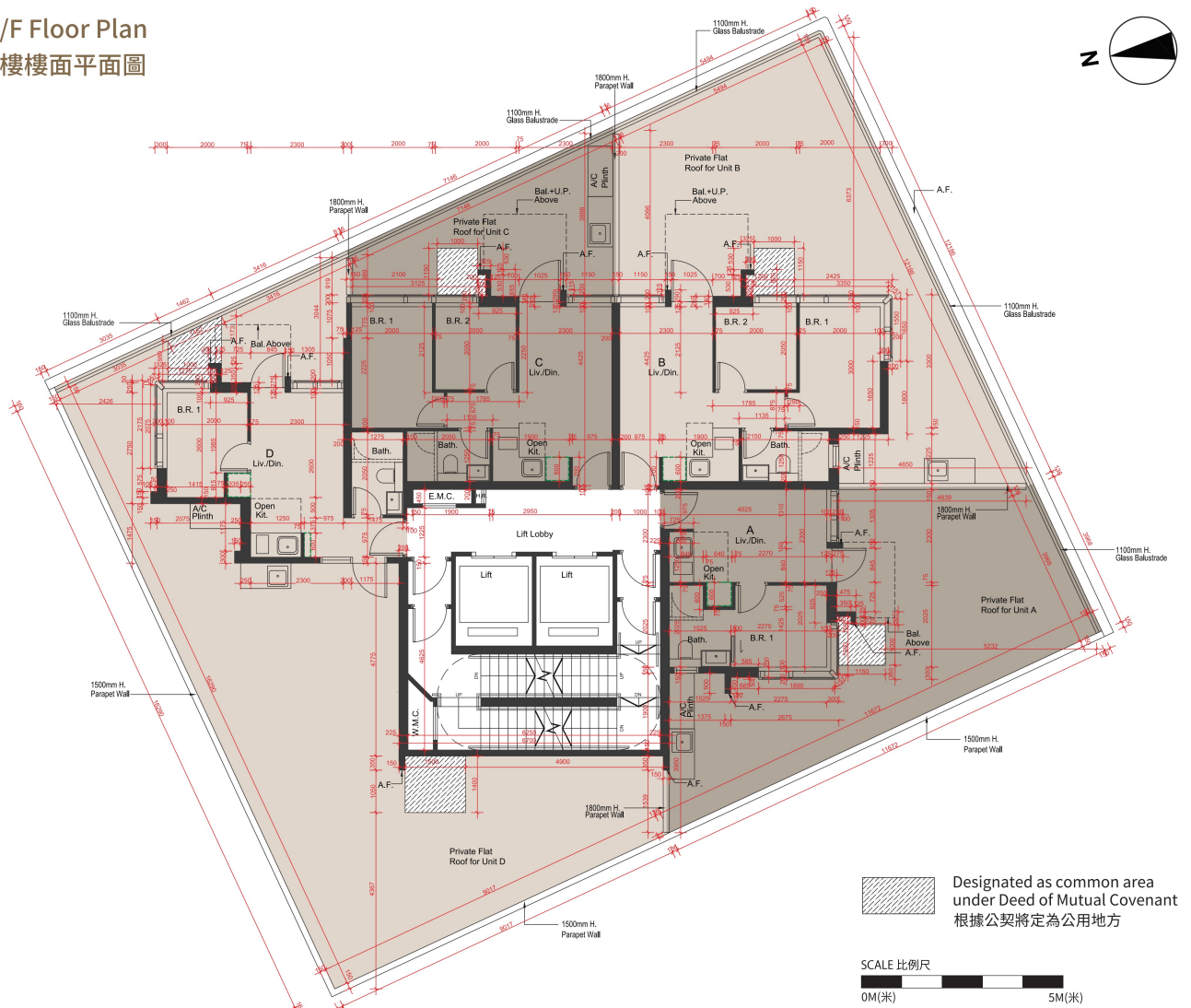


## FLOOR PLANS OF RESIDENTIAL PROPERTIES IN THE DEVELOPMENT

### 發展項目的住宅物業的樓面平面圖

#### 2/F Floor Plan

#### 2樓樓面平面圖



Each of the Residential Property 每個住宅物業	Floor 樓層	Unit 單位			
		A	B	C	D
Thickness of the floor slabs (excluding plaster)(mm) 樓板(不包括灰泥)的厚度(毫米)	2/F 2樓	150	150	150	150
Floor-to-floor height (mm) 層與層之間的高度(毫米)		2800, 3100, 3150	2800, 3100, 3150	2800, 3100, 3150	2800, 3100, 3150

#### Notes:

- The internal areas of the residential properties on the upper floors will generally be slightly larger than those on the lower floors because of the reducing thickness of the structural walls on the upper floors. (Note: This statement required in Section 10(2)(e) in Part 1 of Schedule 1 of the Residential Properties (First-hand Sales) Ordinance (Cap.621) is not applicable to the Development.)
- Please refer to page 20 of this Sales Brochure for legend of the terms and abbreviations used on the floor plan above and the explanatory notes that are applicable thereto.
- The dimensions of the floor plan are all structural dimensions in millimeter.

#### 備註:

- 因住宅物業的較高樓層的結構牆的厚度遞減，較高樓層的內部面積，一般比較低樓層的內部面積稍大。(註：此乃根據《一手住宅物業銷售條例》(第621章)附表1第1部第10(2)(e)條所規定的陳述並不適用於發展項目。)
- 樓面平面圖中所使用名詞及簡稱之圖例及其適用的備註，請參閱本售樓說明書第20頁。
- 平面圖所列之數字為以毫米標示之建築結構尺寸。

## FLOOR PLANS OF RESIDENTIAL PROPERTIES IN THE DEVELOPMENT 發展項目的住宅物業的樓面平面圖

### 3/F, 5/F-12/F, 15/F-23/F & 25/F-26/F Floor Plan

### 3樓、5樓至12樓、15樓至23樓及25樓至26樓樓面平面圖



Each of the Residential Property 每個住宅物業	Floor 樓層	Unit 單位			
		A	B	C	D
Thickness of the floor slabs (excluding plaster)(mm) 樓板(不包括灰泥)的厚度(毫米)	3/F, 5/F-12/F, 15/F-23/F and 25/F 3樓、5樓至12樓、15樓至23樓及25樓	150	150	150	150
	26/F 26樓	150	150	150, 180	150, 180
Floor-to-floor height (mm) 層與層之間的高度(毫米)	3/F, 5/F-12/F, 15/F-23/F and 25/F 3樓、5樓至12樓、15樓至23樓及25樓	2800, 3100, 3150	2800, 3100, 3150	2800, 3100, 3150	2800, 3100, 3150
	26/F 26樓	2800, 3100, 3150	2800, 3100, 3150	2800, 3100, 3150	3150

#### Notes:

- The internal areas of the residential properties on the upper floors will generally be slightly larger than those on the lower floors because of the reducing thickness of the structural walls on the upper floors. (Note: This statement required in Section 10(2)(e) in Part 1 of Schedule 1 of the Residential Properties (First-hand Sales) Ordinance (Cap.621) is not applicable to the Development.)
- Please refer to page 20 of this Sales Brochure for legend of the terms and abbreviations used on the floor plan above and the explanatory notes that are applicable thereto.
- The dimensions of the floor plan are all structural dimensions in millimeter.
- 4/F, 13/F, 14/F and 24/F are omitted.

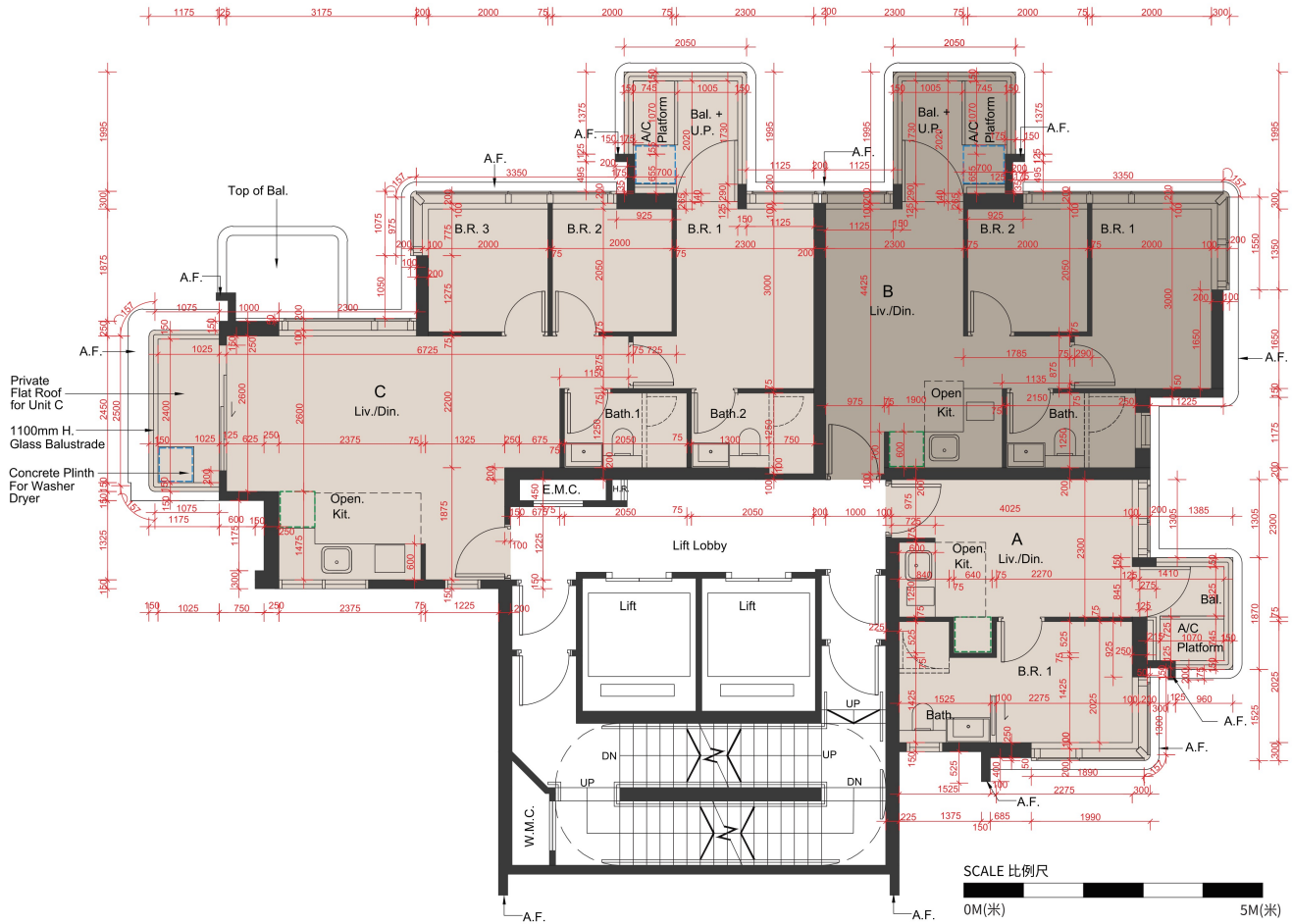
#### 備註:

- 因住宅物業的較高樓層的結構牆的厚度遞減，較高樓層的內部面積，一般比較低樓層的內部面積稍大。(註：此乃根據《一手住宅物業銷售條例》(第621章)附表1第1部第10(2)(e)條所規定的陳述並不適用於發展項目。)
- 樓面平面圖中所使用名詞及簡稱之圖例及其適用的備註，請參閱本售樓說明書第20頁。
- 平面圖所列之數字為以毫米標示之建築結構尺寸。
- 不設4樓、13樓、14樓及24樓。

## FLOOR PLANS OF RESIDENTIAL PROPERTIES IN THE DEVELOPMENT 發展項目的住宅物業的樓面平面圖

### 27/F Floor Plan

### 27樓樓面平面圖



Each of the Residential Property 每個住宅物業	Floor 樓層	Unit 單位		
		A	B	C
Thickness of the floor slabs (excluding plaster)(mm) 樓板(不包括灰泥)的厚度(毫米)	27/F 27樓	150	150, 180	150, 180
Floor-to-floor height (mm) 層與層之間的高度(毫米)		2800, 3100, 3150	2800, 3150	2800, 3100, 3150

#### Notes :

- The internal areas of the residential properties on the upper floors will generally be slightly larger than those on the lower floors because of the reducing thickness of the structural walls on the upper floors. (Note : This statement required in Section 10(2)(e) in Part 1 of Schedule 1 of the Residential Properties (First-hand Sales) Ordinance (Cap.621) is not applicable to the Development.)
- Please refer to page 20 of this Sales Brochure for legend of the terms and abbreviations used on the floor plan above and the explanatory notes that are applicable thereto.
- The dimensions of the floor plan are all structural dimensions in millimeter.

#### 備註：

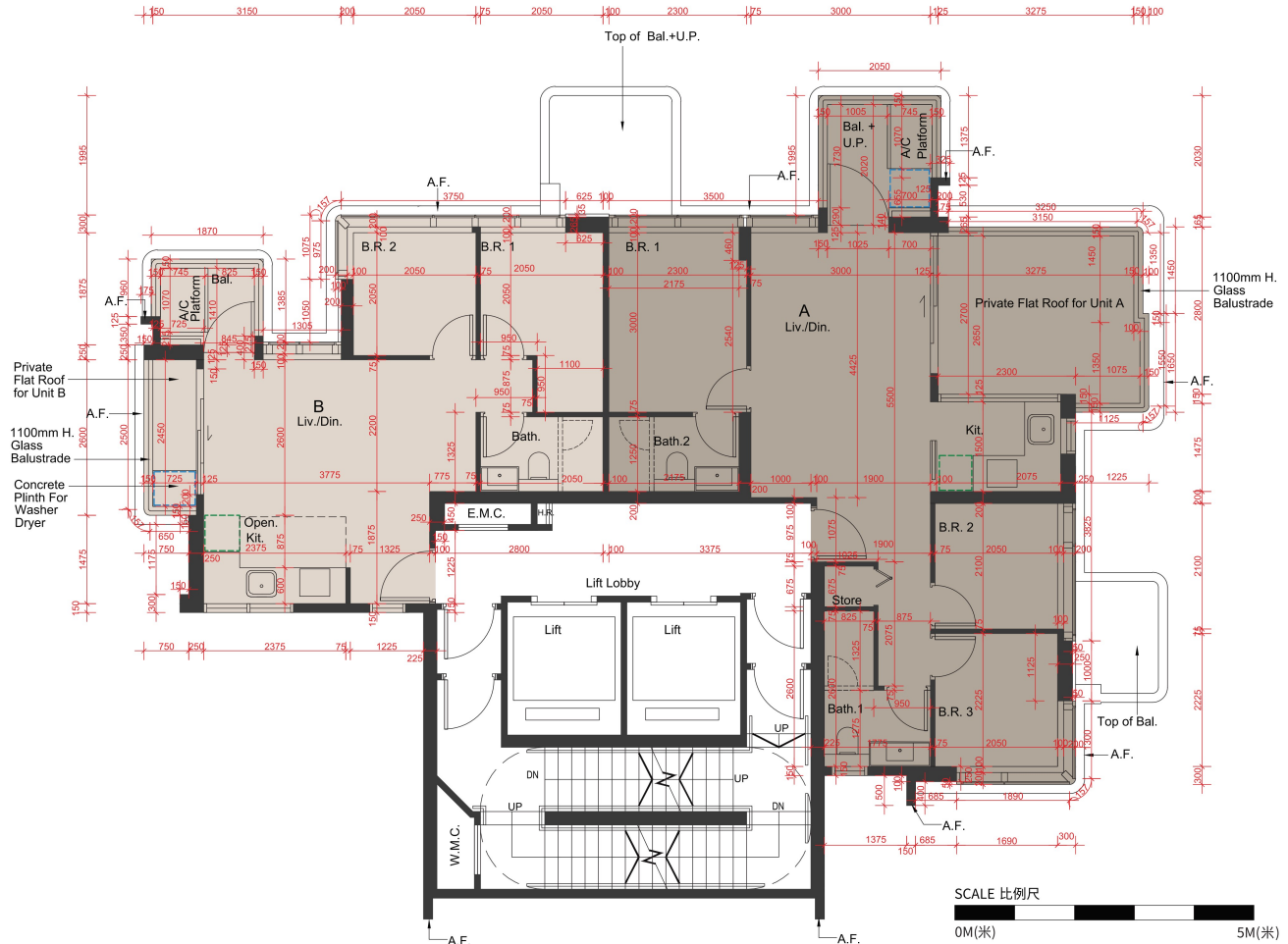
- 因住宅物業的較高樓層的結構牆的厚度遞減，較高樓層的內部面積，一般比較低樓層的內部面積稍大。(註：此乃根據《一手住宅物業銷售條例》(第621章)附表1第1部第10(2)(e)條所規定的陳述並不適用於發展項目。)
- 樓面平面圖中所使用名詞及簡稱之圖例及其適用的備註，請參閱本售樓說明書第20頁。
- 平面圖所列之數字為以毫米標示之建築結構尺寸。

## FLOOR PLANS OF RESIDENTIAL PROPERTIES IN THE DEVELOPMENT

### 發展項目的住宅物業的樓面平面圖

#### 28/F Floor Plan

#### 28樓樓面平面圖



Each of the Residential Property 每個住宅物業	Floor 樓層	Unit 單位	
		A	B
Thickness of the floor slabs (excluding plaster)(mm) 樓板(不包括灰泥)的厚度(毫米)	28/F 28樓	150	150, 180
Floor-to-floor height (mm) 層與層之間的高度(毫米)		3150, 3500	3150, 3450, 3500

#### Notes:

- The internal areas of the residential properties on the upper floors will generally be slightly larger than those on the lower floors because of the reducing thickness of the structural walls on the upper floors. (Note: This statement required in Section 10(2)(e) in Part 1 of Schedule 1 of the Residential Properties (First-hand Sales) Ordinance (Cap.621) is not applicable to the Development.)
- Please refer to page 20 of this Sales Brochure for legend of the terms and abbreviations used on the floor plan above and the explanatory notes that are applicable thereto.
- The dimensions of the floor plan are all structural dimensions in millimeter.

#### 備註:

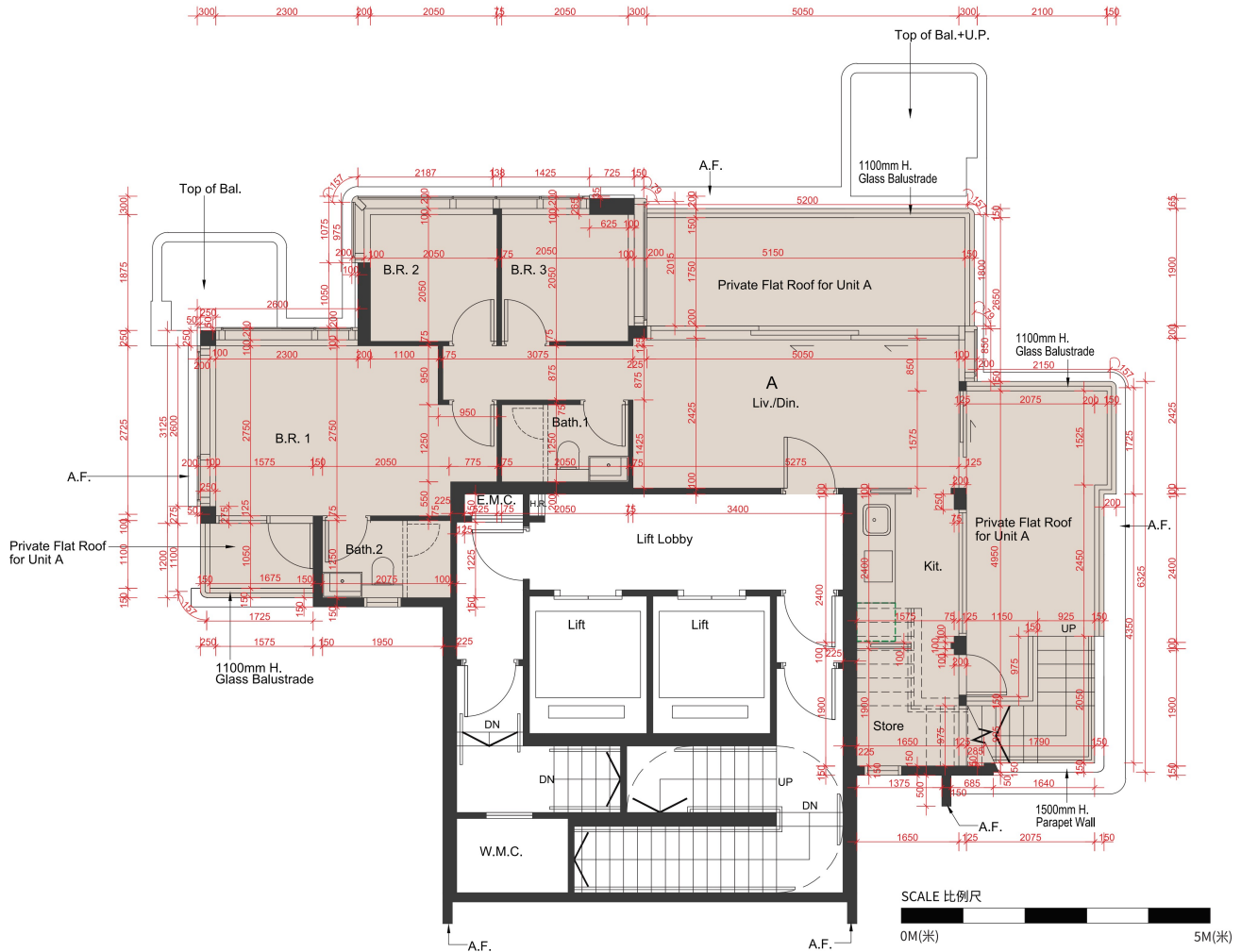
- 因住宅物業的較高樓層的結構牆的厚度遞減，較高樓層的內部面積，一般比較低樓層的內部面積稍大。(註：此乃根據《一手住宅物業銷售條例》(第621章)附表1第1部第10(2)(e)條所規定的陳述並不適用於發展項目。)
- 樓面平面圖中所使用名詞及簡稱之圖例及其適用的備註，請參閱本售樓說明書第20頁。
- 平面圖所列之數字為以毫米標示之建築結構尺寸。

# FLOOR PLANS OF RESIDENTIAL PROPERTIES IN THE DEVELOPMENT

## 發展項目的住宅物業的樓面平面圖

### 29/F Floor Plan

### 29樓樓面平面圖



Each of the Residential Property 每個住宅物業	Floor 樓層	Unit 單位 A
Thickness of the floor slabs (excluding plaster)(mm) 樓板(不包括灰泥)的厚度(毫米)	29/F 29樓	150
Floor-to-floor height (mm) 層與層之間的高度(毫米)		4000

#### Notes:

- The internal areas of the residential properties on the upper floors will generally be slightly larger than those on the lower floors because of the reducing thickness of the structural walls on the upper floors. (Note: This statement required in Section 10(2)(e) in Part 1 of Schedule 1 of the Residential Properties (First-hand Sales) Ordinance (Cap.621) is not applicable to the Development.)
- Please refer to page 20 of this Sales Brochure for legend of the terms and abbreviations used on the floor plan above and the explanatory notes that are applicable thereto.
- The dimensions of the floor plan are all structural dimensions in millimeter.

#### 備註:

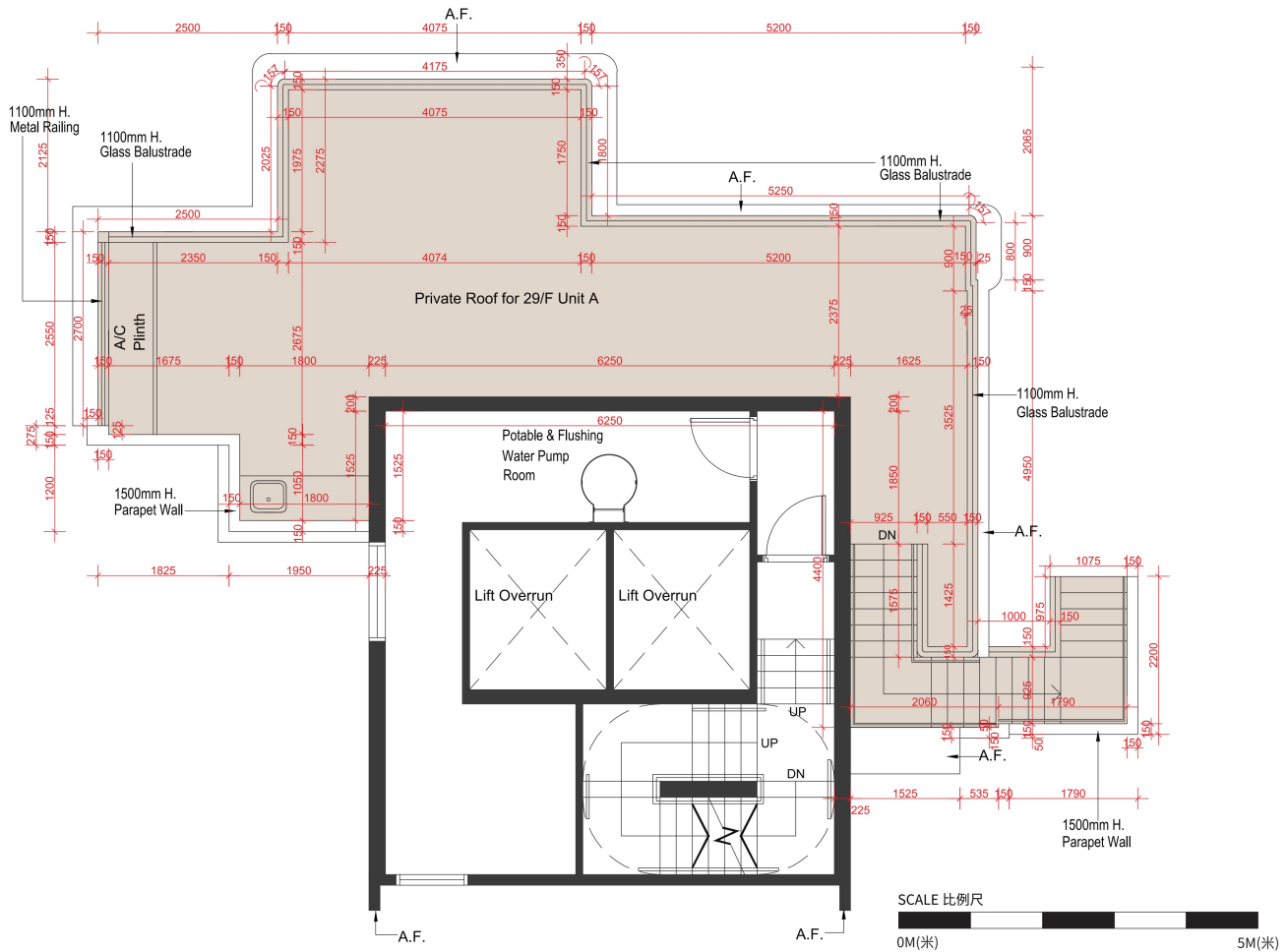
- 因住宅物業的較高樓層的結構牆的厚度遞減，較高樓層的內部面積，一般比較低樓層的內部面積稍大。(註：此乃根據《一手住宅物業銷售條例》(第621章)附表1第10(2)(e)條所規定的陳述並不適用於發展項目。)
- 樓面平面圖中所使用名詞及簡稱之圖例及其適用的備註，請參閱本售樓說明書第20頁。
- 平面圖所列之數字為以毫米標示之建築結構尺寸。

## FLOOR PLANS OF RESIDENTIAL PROPERTIES IN THE DEVELOPMENT

### 發展項目的住宅物業的樓面平面圖

#### Roof Floor Plan

#### 天台樓面平面圖



Each of the Residential Property 每個住宅物業	Floor 樓層	Unit 單位 A
Thickness of the floor slabs (excluding plaster)(mm) 樓板(不包括灰泥)的厚度(毫米)	Roof 天台	Not Applicable 不適用
Floor-to-floor height (mm) 層與層之間的高度(毫米)		Not Applicable 不適用

#### Notes :

- The internal areas of the residential properties on the upper floors will generally be slightly larger than those on the lower floors because of the reducing thickness of the structural walls on the upper floors. (Note : This statement required in Section 10(2)(e) in Part 1 of Schedule 1 of the Residential Properties (First-hand Sales) Ordinance (Cap.621) is not applicable to the Development.)
- Please refer to page 20 of this Sales Brochure for legend of the terms and abbreviations used on the floor plan above and the explanatory notes that are applicable thereto.
- The dimensions of the floor plan are all structural dimensions in millimeter.

#### 備註 :

- 因住宅物業的較高樓層的結構牆的厚度遞減，較高樓層的內部面積，一般比較低樓層的內部面積稍大。(註：此乃根據《一手住宅物業銷售條例》(第621章)附表1第10(2)(e)條所規定的陳述並不適用於發展項目。)
- 樓面平面圖中所使用名詞及簡稱之圖例及其適用的備註，請參閱本售樓說明書第20頁。
- 平面圖所列之數字為以毫米標示之建築結構尺寸。