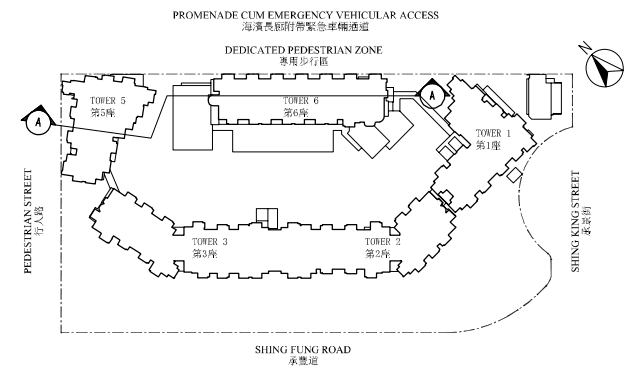
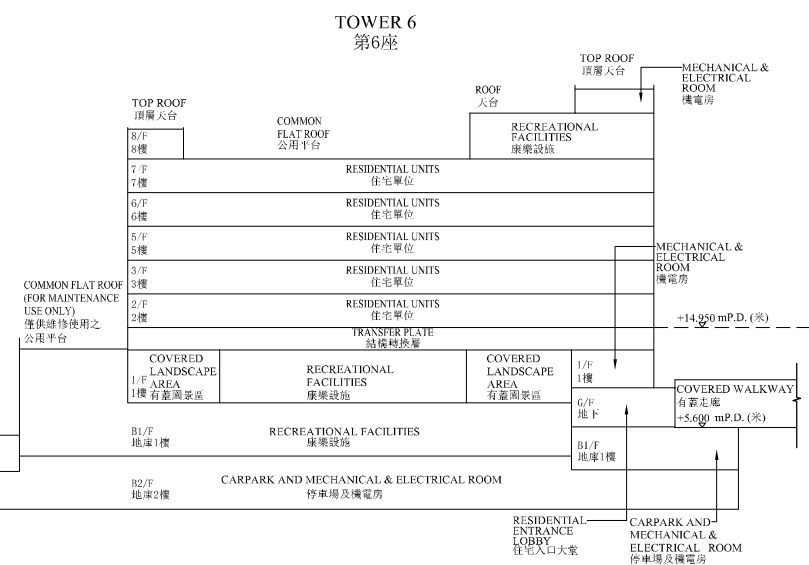
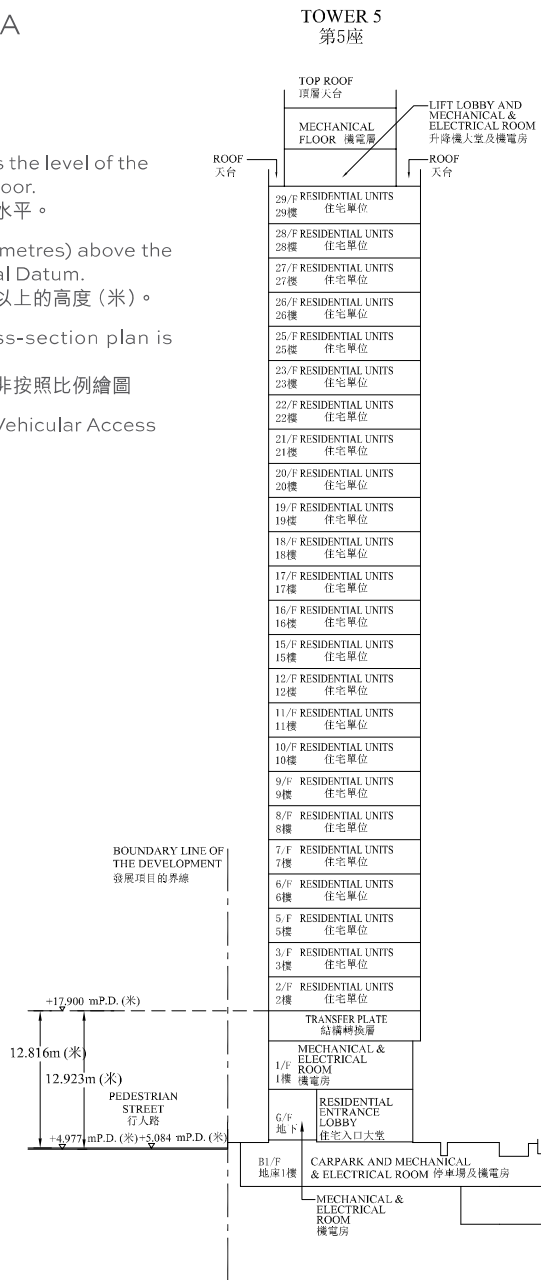


Cross-section plan of building in the phase 期數中的建築物的橫截面圖

Cross-Section A-A 橫截面圖 A-A

- Dotted line denotes the level of the lowest residential floor. 虛線為最低住宅樓層水平。
- ▽ Denotes height (in metres) above the Hong Kong principal Datum. 代表香港主水平基準以上的高度(米)。
- Remark : This cross-section plan is not drawn to scale 備註：此橫截面圖並非按照比例繪圖
- EVA = Emergency Vehicular Access 緊急車輛通道

The part of Pedestrian Street adjacent to the building is 4.977 to 5.084 metres above the Hong Kong Principal Datum. 毗連建築物的一段行人路為香港主水平基準以上4.977至5.084米。



Key Plan 索引圖

Cross-section plan of building in the phase 期數中的建築物的橫截面圖

Cross-Section B-B 橫截面圖 B-B

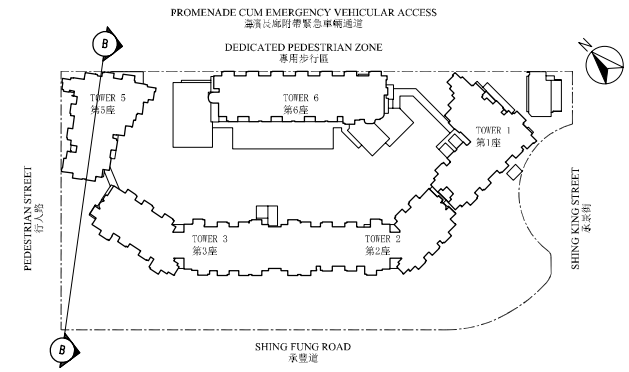
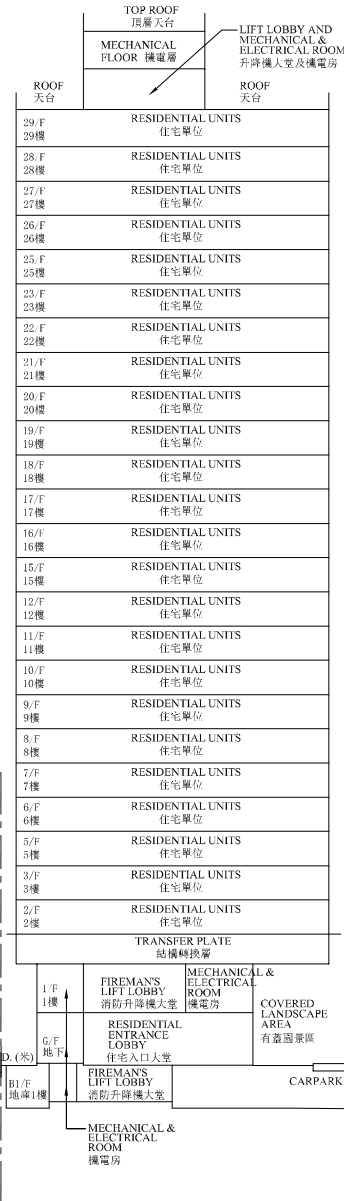
--- Dotted line denotes the level of the lowest residential floor.
虛線為最低住宅樓層水平。

▽ Denotes height (in metres) above the Hong Kong principal Datum.
代表香港主水平基準以上的高度 (米)。

Remark : This cross-section plan is not drawn to scale
備註：此橫截面圖並非按照比例繪圖

EVA = Emergency Vehicular Access
緊急車輛通道

TOWER 5
第5座



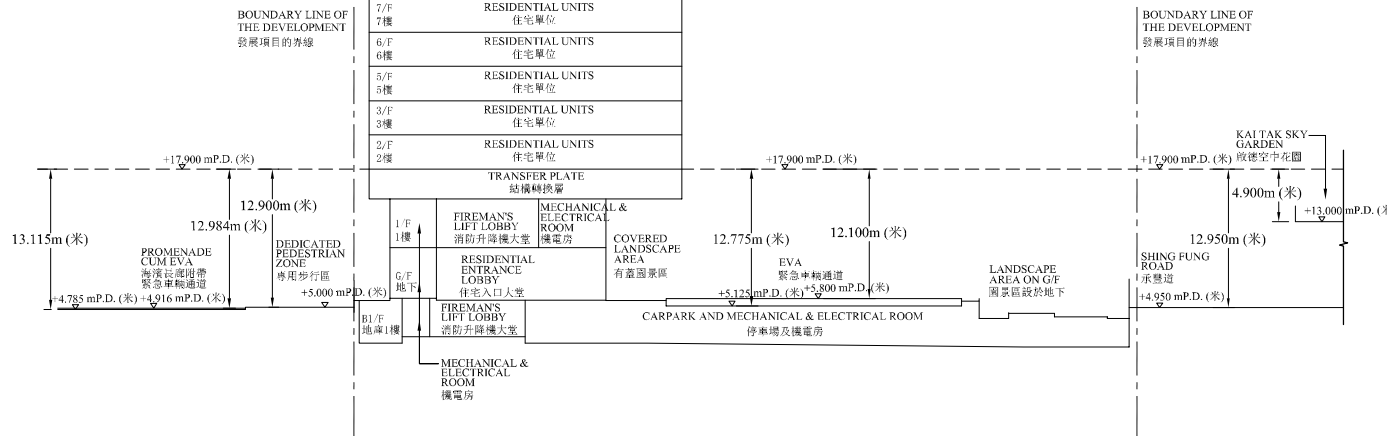
Key Plan 索引圖

The part of Promenade Cum Emergency Vehicular Access adjacent to the building is 4.785 to 4.916 metres above the Hong Kong Principal Datum.

毗連建築物的一段海濱長廊附帶緊急車輛通道為香港主水平基準以上4.785至4.916米。

The part of Dedicated Pedestrian Zone adjacent to the building is 5.000 metres above the Hong Kong Principal Datum.

毗連建築物的一段專用步行區為香港主水平基準以上5.000米。



The part of Emergency Vehicular Access adjacent to the building is 5.125 to 5.800 metres above the Hong Kong Principal Datum.
毗連建築物的一段緊急車輛通道為香港主水平基準以上5.125至5.800米。

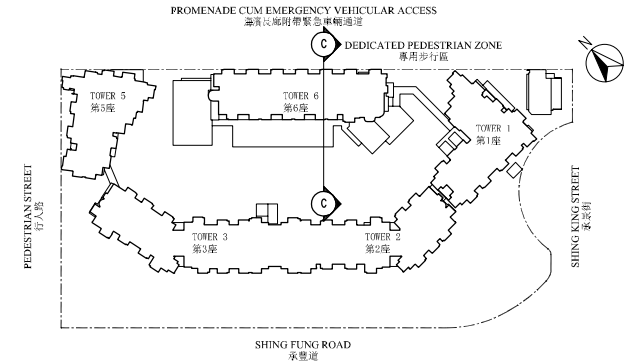
The part of Shing Fung Road adjacent to the building is 4.950 metres above the Hong Kong Principal Datum.
毗連建築物的一段承豐道為香港主水平基準以上4.950米。

The part of Kai Tak Sky Garden above Shing Fung Road adjacent to the building is 13.000 metres above the Hong Kong Principal Datum.
毗連建築物的一段承豐道上的啟德空中花園為香港主水平基準以上13.000米。

Cross-section plan of building in the phase 期數中的建築物的橫截面圖

Cross-Section C-C 橫截面圖 C-C

- Dotted line denotes the level of the lowest residential floor.
虛線為最低住宅樓層水平。
 - ▽ Denotes height (in metres) above the Hong Kong principal Datum.
代表香港主水平基準以上的高度(米)。
- Remark : This cross-section plan is not drawn to scale
備註：此橫截面圖並非按照比例繪圖
- EVA = Emergency Vehicular Access
緊急車輛通道



Key Plan 索引圖

The part of Promenade Cum Emergency Vehicular Access adjacent to the building is 4.550 to 4.693 metres above the Hong Kong Principal Datum.
毗連建築物的一段海濱長廊附帶緊急車輛通道為香港主水平基準以上4.550至4.693米。

The part of Dedicated Pedestrian Zone adjacent to the building is 4.560 to 5.000 metres above the Hong Kong Principal Datum.
毗連建築物的一段專用步行區為香港主水平基準以上4.560至5.000米。

