

11 FLOOR PLANS OF RESIDENTIAL PROPERTIES IN THE DEVELOPMENT

發展項目的住宅物業的樓面平面圖

Legend for floor plans of residential properties in the Development 發展項目的住宅物業的樓面平面圖圖例

A/C PLATFORM	=	Air-conditioner Platform	空調機平台	LIV.	=	Living Room	客廳
A.F.	=	Architectural Feature	建築裝飾	M.B.R.	=	Master Bedroom	主人睡房
A.F. ABOVE	=	Architectural Feature Above	建築裝飾於上方	M. BATH.	=	Master Bathroom	主人浴室
A.F. BELOW	=	Architectural Feature Below	建築裝飾於下方	OPEN KIT.	=	Open Kitchen	開放式廚房
ALUM. GRILLE FOR EXTERNAL PIPE DUCT	=	Aluminium Grille for External Pipe Duct	鋁管蓋於外牆管道槽	P.D.	=	Pipe Duct	管道槽
BATH.	=	Bathroom	浴室	POTABLE R.C. WATER TANK	=	Potable Reinforced Concrete Water Tank	飲用水缸
BAL.	=	Balcony	露台	POTABLE R.C. WATER TANK ROOM (RESIDENTIAL)	=	Potable Reinforced Concrete Water Tank Room (Residential)	飲用水缸房(住宅)
BAL. ABOVE	=	Balcony above	露台設於上方	PRIVATE FLAT ROOF	=		私人平台
B.R.	=	Bedroom	睡房	PRIVATE ROOF	=		私人天台
COMMON PART. NOT FORMING PART OF THE FLAT ROOF HELD WITH A FLAT	=		公用部分。不屬於住宅單位平台之一部分	R.C. CANOPY	=	Reinforced Concrete Canopy	鋼筋混凝土簷篷
CONC. PLINTH FOR A/C	=	Concrete Plinth for Air-conditioner	混凝土空調機基座	R.S.M.R.R.	=	Refuse Storage and Material Recovery Room	垃圾及物料回收室
DN	=	Down	下	ST.	=	Store	儲物房
DIN.	=	Dining Room	飯廳	T.	=	Toilet	洗手間
E.L.E.	=	Electrical Duct / Meter Room	電線槽/電錶房	TOP OF STAIRHOOD	=		梯屋頂層
E.L.V.	=	Extra Low Voltage Riser Duct	低電壓槽	UP	=		上
E.M.C.	=	Electrical Meter Cabinet	電錶箱	U.P.	=	Utility Platform	工作平台
H.R.	=	Hose Reel	消防喉轆	U.P. ABOVE	=	Utility Platform Above	工作平台設於上方
KIT.	=	Kitchen	廚房	VENT DUCT	=		通風槽
LIFT	=		升降機	W.M.C.	=	Water Meter Cabinet	水錶箱
LIFT LOBBY	=		升降機大堂	WINDOW EAVE ABOVE	=		窗簷於上方
LIFT SHAFT	=		升降機槽				

Notes applicable to the floor plans of this section:

1. The floor-to-floor height refers to the height between the top surface of the structural slab of a floor and the top surface of the structural slab of its immediate upper floor.
2. There may be architectural features and/or exposed pipes on external walls of some floors. For details, please refer to the latest approved building plans.
3. There may be common pipes and/or mechanical and electrical services within balconies, utility platforms, flat roofs and roofs of some residential units.
4. Some residential units have ceiling bulkheads and/or sunken slab at living room, bedrooms, bathrooms, corridor and kitchen for air-conditioning system and/or other mechanical and electrical services.
5. Symbols of fittings and fitments shown on the floor plans, such as bathtubs, sink, water closets, sink counter, etc. are architectural symbols retrieved from the latest approved general building plans. They are indications of their approximate locations only and not indications of their actual size, designs and shapes.
6. Balconies and utility platforms are non-enclosed areas.

適用於本節各樓面平面圖之備註：

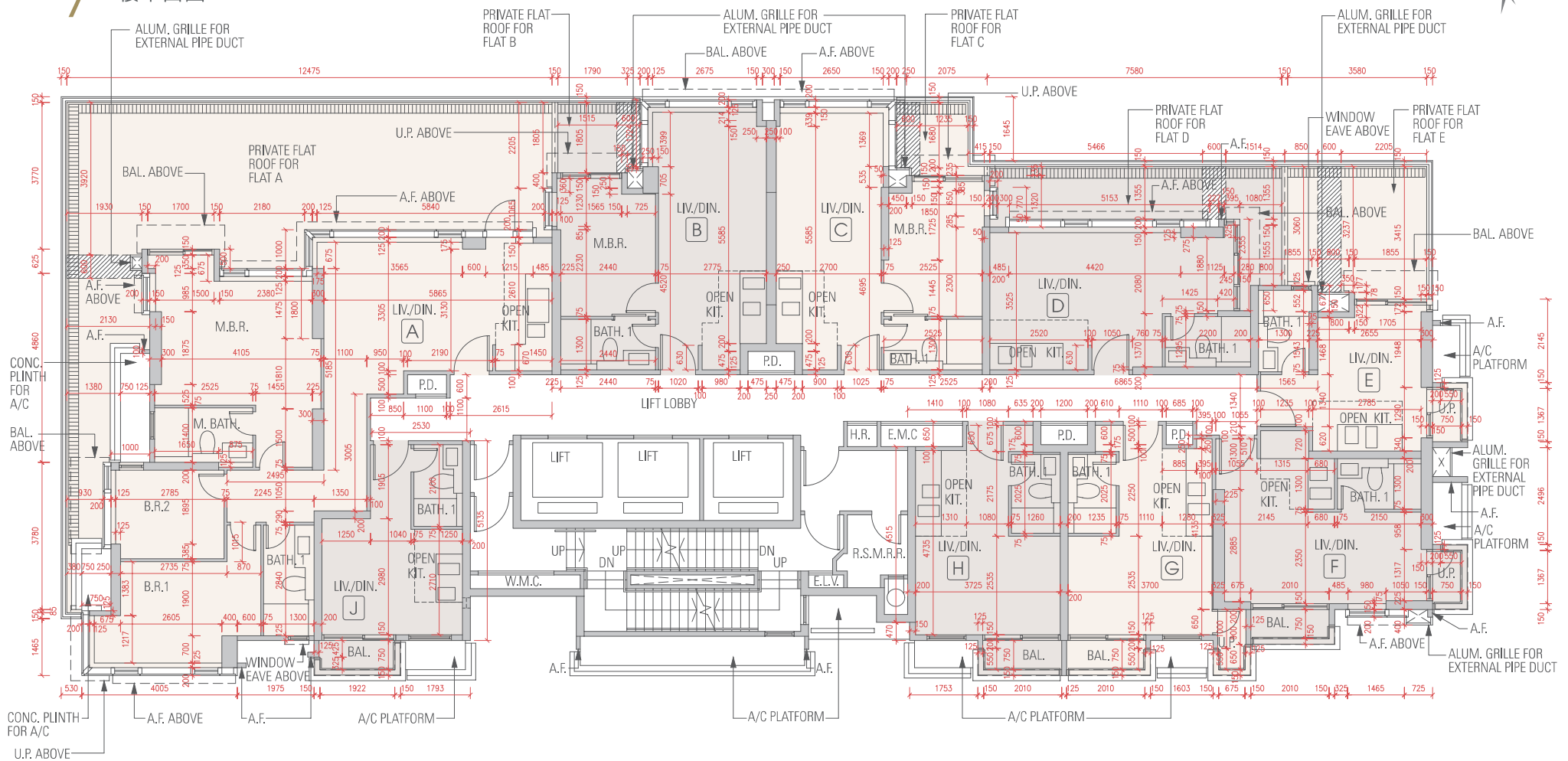
1. 每個住宅物業的層與層之間的高度指該樓層之石屎地台面與上一層石屎地台面之高度距離。
2. 部分樓層外牆或設有建築裝飾及/或外露喉管。詳情請參考最新批准之建築圖則。
3. 部分住宅單位之露台、工作平台、平台及天台內或裝有公用喉管及/或機電設備。
4. 部分住宅單位的客廳、睡房、浴室、走廊及廚房之天花板有假天花及/或跌級樓板，用以安裝空調及/或其他機電設備。
5. 平面圖上所顯示的形象裝置符號，例如浴缸、洗滌盆、坐廁、洗滌盆櫃等乃摘自最新的經批准的建築圖則，只供展示其大約位置而非展示其實際大小、設計及形狀。
6. 露台和工作平台為不可封閉的地方。

11 FLOOR PLANS OF RESIDENTIAL PROPERTIES IN THE DEVELOPMENT

發展項目的住宅物業的樓面平面圖

7 /F Floor Plan

樓平面圖



 COMMON PART. NOT FORMING PART OF THE FLAT ROOF HELD WITH A FLAT



11 FLOOR PLANS OF RESIDENTIAL PROPERTIES IN THE DEVELOPMENT

發展項目的住宅物業的樓面平面圖

7 /F Floor Plan

樓平面圖

	FLOOR 樓層	FLAT 單位								
		A	B	C	D	E	F	G	H	J
Floor-to-floor height (refers to the height between the top surface of the structural slab of a floor and the top surface of the structural slab of its immediate upper floor) of each residential property (mm) 每個住宅物業的層與層之間的高度(指該樓層之石屎地台面與上一層石屎地台面之高度距離)(毫米)	7/F 7樓	2850	2950	2950	2900	2900	2950	2950	2950	2950
		2950	3050	3050	3050	2950	2900	2950	2950	2950
		3050	3250	3250	3250	3050	3250	3250	3250	3250
		3250				3250				
Thickness of the floor slabs (excluding plaster) of each residential property (mm) 每個住宅物業的樓板(不包括灰泥)厚度(毫米)		150		150	150	150	150	150	150	150
		175	150	200	200	150	200	175	175	175
		200								

The internal areas of the residential properties on the upper floors will generally be slightly larger than those on the lower floors because of the reducing thickness of the structural walls on the upper floors.
(Remark: This statement is not applicable to the Development.)

Notes:

1. The dimensions in the floor plans are all structural dimensions in millimetre.
2. Please refer to glossary in the beginning of this chapter for abbreviations shown in the floor plan.

因住宅物業的較高樓層的結構牆的厚度遞減，較高樓層的內部面積，一般比較低樓層的內部面積稍大。
(註：此陳述不適用於發展項目。)

備註：

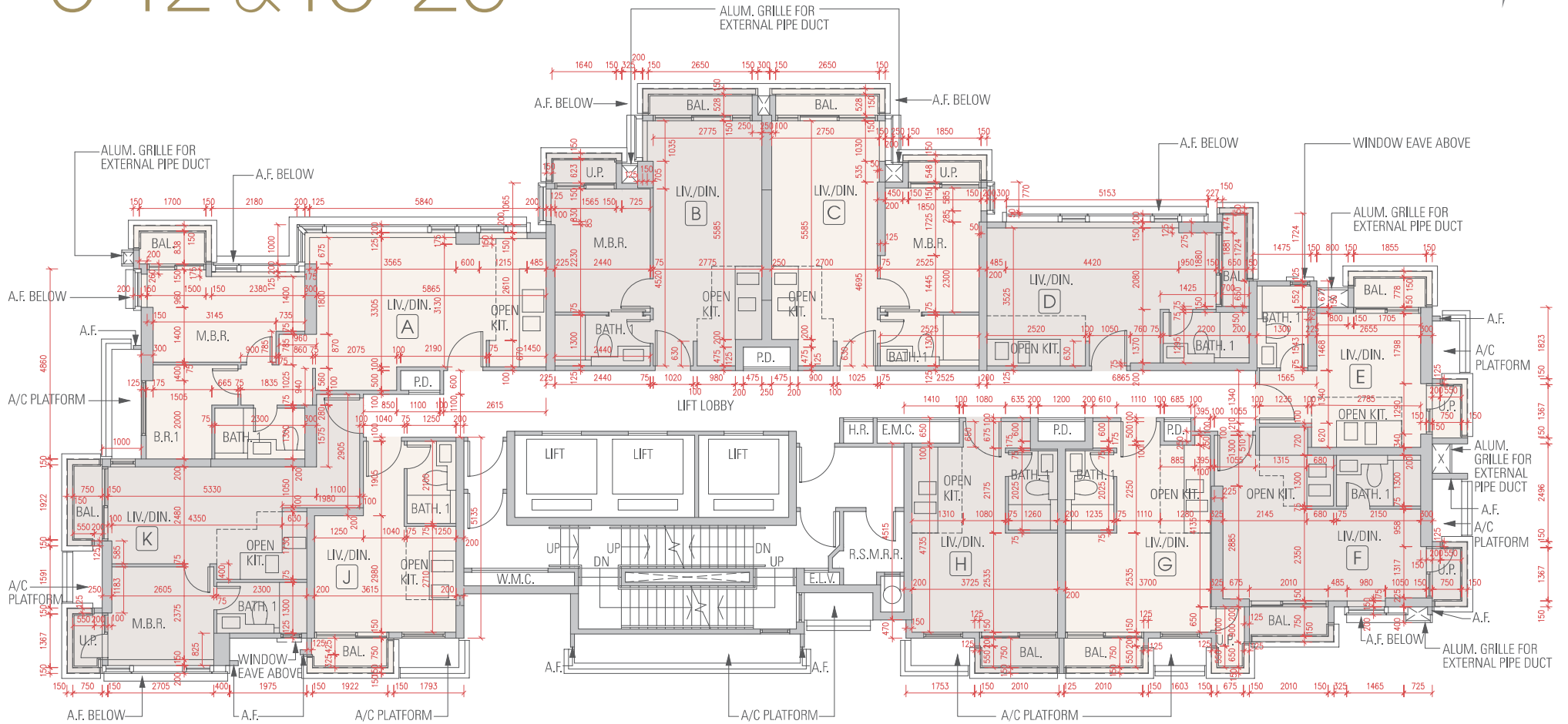
1. 樓面平面圖所列之尺寸為以毫米標示之建築結構尺寸。
2. 有關平面圖中顯示之英文簡稱之詮釋，請參閱本章節開首之詞彙表。

11 FLOOR PLANS OF RESIDENTIAL PROPERTIES IN THE DEVELOPMENT

發展項目的住宅物業的樓面平面圖

8-12 & 15-23 /F Floor Plan

樓平面圖



11 FLOOR PLANS OF RESIDENTIAL PROPERTIES IN THE DEVELOPMENT 發展項目的住宅物業的樓面平面圖

8-12 & 15-23 /F Floor Plan 樓平面圖

	FLOOR 樓層	FLAT 單位									
		A	B	C	D	E	F	G	H	J	K
Floor-to-floor height (refers to the height between the top surface of the structural slab of a floor and the top surface of the structural slab of its immediate upper floor) of each residential property (mm) 每個住宅物業的層與層之間的高度(指該樓層之石屎地台面與上一層石屎地台面之高度距離)(毫米)	8/F - 12/F & 15/F - 22/F 8樓至12樓及15樓至22樓	3100 ^3100	3100 *3100	3100 *3100	3100 #3100	3100 *3100 #3100	3100 #3100	3100 *3100	3100 *3100	3100 *3100	3100 *3100
Thickness of the floor slabs (excluding plaster) of each residential property (mm) 每個住宅物業的樓板(不包括灰泥)厚度(毫米)		150 175 200	150	150 200	150 200	150	150 200	150 175	150 175	150 175	150 175
Floor-to-floor height (refers to the height between the top surface of the structural slab of a floor and the top surface of the structural slab of its immediate upper floor) of each residential property (mm) 每個住宅物業的層與層之間的高度(指該樓層之石屎地台面與上一層石屎地台面之高度距離)(毫米)	23/F 23樓	2800 ^3200 3250 *3550 ^3650	2800 *3100 3250 *3550	2900 *3200 3250 *3550	2900 *3200 3250 #3600	2800 #3150 3250 *3550 #3600	2800 #3150 3250 #3600	2900 *3200 3250 *3550	2900 *3200 3250 *3550	2800 3250 *3550	2800 *3100 3250 *3550
Thickness of the floor slabs (excluding plaster) of each residential property (mm) 每個住宅物業的樓板(不包括灰泥)厚度(毫米)		150 175 200	150	150 200	150 200	150	150 200	150 175	150 175	150 175	150 175

- * Inclusive of the sunken depth of the sunken electrical and mechanical zone on the floor of this floor (300mm).
- # Inclusive of the sunken depth of the sunken electrical and mechanical zone on the floor of this floor (350mm).
- ^ Inclusive of the sunken depth of the sunken electrical and mechanical zone on the floor of this floor (400mm).

The internal areas of the residential properties on the upper floors will generally be slightly larger than those on the lower floors because of the reducing thickness of the structural walls on the upper floors.
(Remark: This statement is not applicable to the Development.)

Notes:

1. The dimensions in the floor plans are all structural dimensions in millimetre.
2. Please refer to glossary in the beginning of this chapter for abbreviations shown in the floor plan.
3. 13/F, 14/F & 24/F are omitted.

- * 包括本層地台跌級機電層之跌級深度(300毫米)。
- # 包括本層地台跌級機電層之跌級深度(350毫米)。
- ^ 包括本層地台跌級機電層之跌級深度(400毫米)。

因住宅物業的較高樓層的結構牆的厚度遞減，較高樓層的內部面積，一般比較低樓層的內部面積稍大。
(註：此陳述不適用於發展項目。)

備註：

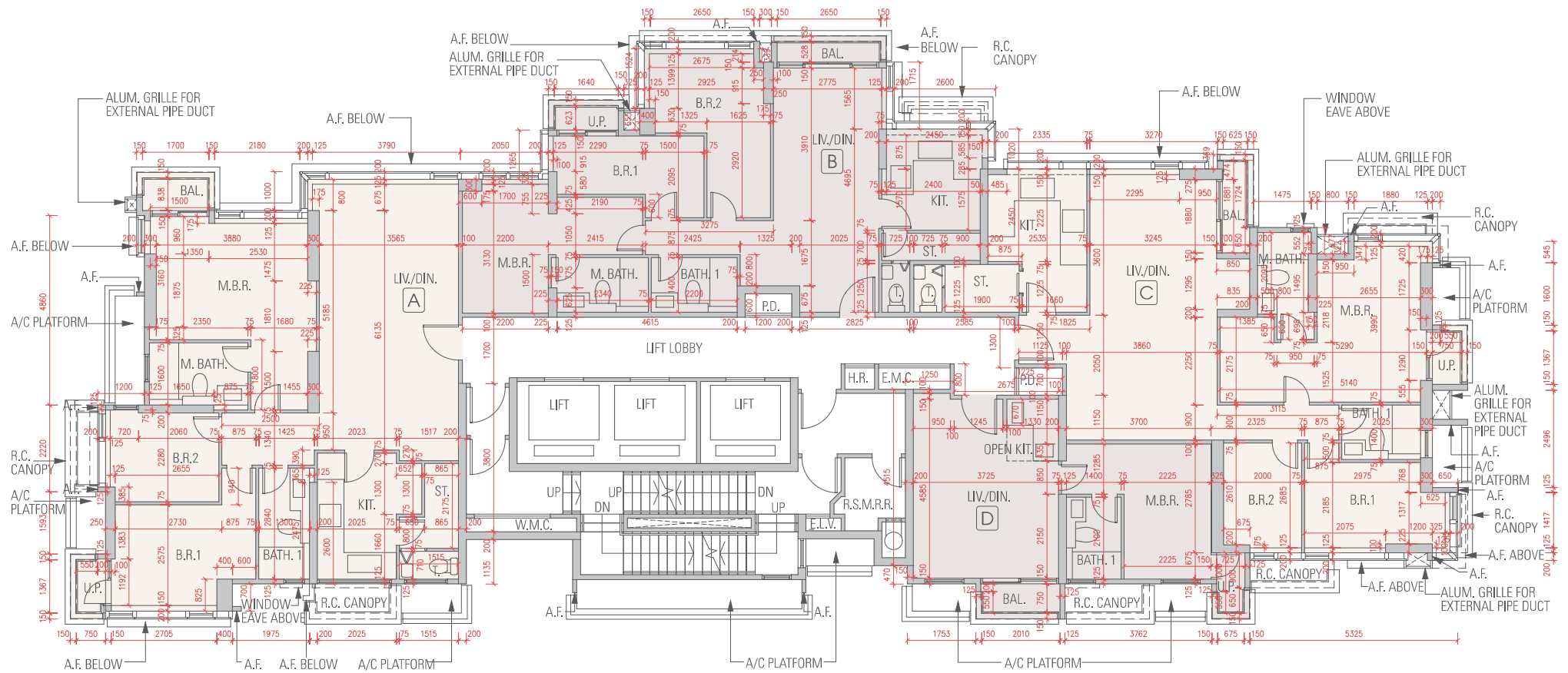
1. 樓面平面圖所列之尺寸為以毫米標示之建築結構尺寸。
2. 有關平面圖中顯示之英文簡稱之詮釋，請參閱本章節開首之詞彙表。
3. 不設13樓、14樓及24樓。

11 FLOOR PLANS OF RESIDENTIAL PROPERTIES IN THE DEVELOPMENT

發展項目的住宅物業的樓面平面圖

25 /F Floor Plan

樓平面圖



11 FLOOR PLANS OF RESIDENTIAL PROPERTIES IN THE DEVELOPMENT

發展項目的住宅物業的樓面平面圖

25 /F Floor Plan

樓平面圖

	FLOOR 樓層	FLAT 單位			
		A	B	C	D
Floor-to-floor height (refers to the height between the top surface of the structural slab of a floor and the top surface of the structural slab of its immediate upper floor) of each residential property (mm) 每個住宅物業的層與層之間的高度(指該樓層之石屎地台面與上一層石屎地台面之高度距離)(毫米)	25/F 25樓	2800	2900	2800	
		2825	3250	2850	2900
		3250	#3250	2900	2900
		~3250	#3250	#3200	3250
		~3275	~3250	3250	#3250
		~3700	~3700	~3250	#3600
				#3600	
				~3700	
Thickness of the floor slabs (excluding plaster) of each residential property (mm) 每個住宅物業的樓板(不包括灰泥)厚度(毫米)		150	150	150	150
		175	200	200	175
		200			

Inclusive of the sunken depth of the sunken electrical and mechanical zone on the floor of this floor (350mm).
~ Inclusive of the sunken depth of the sunken electrical and mechanical zone on the floor of this floor (450mm).

The internal areas of the residential properties on the upper floors will generally be slightly larger than those on the lower floors because of the reducing thickness of the structural walls on the upper floors.
(Remark: This statement is not applicable to the Development.)

Notes:

1. The dimensions in the floor plans are all structural dimensions in millimetre.
2. Please refer to glossary in the beginning of this chapter for abbreviations shown in the floor plan.

包括本層地台跌級機電層之跌級深度(350毫米)。
~ 包括本層地台跌級機電層之跌級深度(450毫米)。

因住宅物業的較高樓層的結構牆的厚度遞減，較高樓層的內部面積，一般比較低樓層的內部面積稍大。
(註：此陳述不適用於發展項目。)

備註：

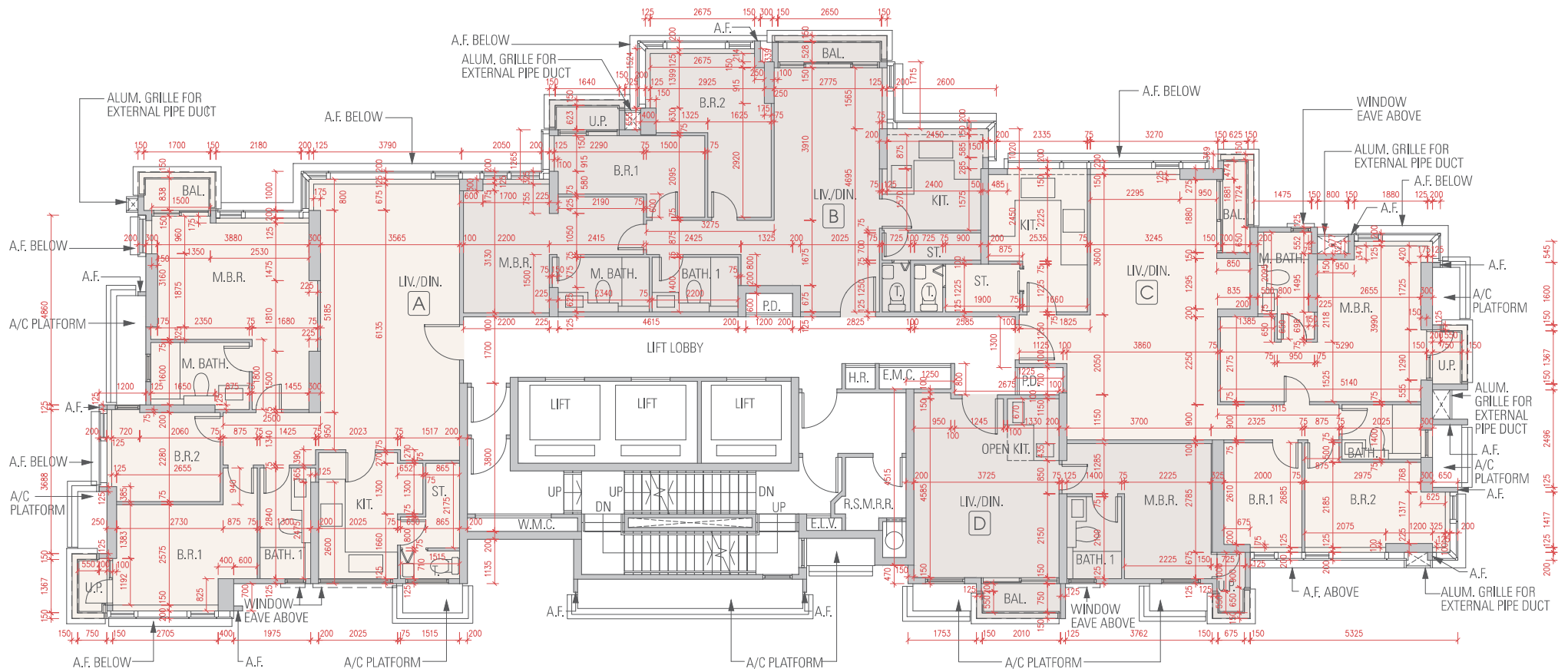
1. 樓面平面圖所列之尺寸為以毫米標示之建築結構尺寸。
2. 有關平面圖中顯示之英文簡稱之詮釋，請參閱本章節開首之詞彙表。

11 FLOOR PLANS OF RESIDENTIAL PROPERTIES IN THE DEVELOPMENT

發展項目的住宅物業的樓面平面圖

26-29 /F Floor Plan

樓面平面圖



11 FLOOR PLANS OF RESIDENTIAL PROPERTIES IN THE DEVELOPMENT

發展項目的住宅物業的樓面平面圖

26-29 /F Floor Plan

樓平面圖

	FLOOR 樓層	FLAT 單位			
		A	B	C	D
Floor-to-floor height (refers to the height between the top surface of the structural slab of a floor and the top surface of the structural slab of its immediate upper floor) of each residential property (mm) 每個住宅物業的層與層之間的高度(指該樓層之石屎地台面與上一層石屎地台面之高度距離)(毫米)	26/F - 28/F 26樓至28樓	3250 °3250 ~3250	3250 #3250 ~3250	3250 ^3250 ~3250	3250 #3250
Thickness of the floor slabs (excluding plaster) of each residential property (mm) 每個住宅物業的樓板(不包括灰泥)厚度(毫米)		150 175 200	150 200	150 200	150 175
Floor-to-floor height (refers to the height between the top surface of the structural slab of a floor and the top surface of the structural slab of its immediate upper floor) of each residential property (mm) 每個住宅物業的層與層之間的高度(指該樓層之石屎地台面與上一層石屎地台面之高度距離)(毫米)	29/F 29樓	2825 3250 °3250 ~3250 ~3675 ~3700	2850 3250 #3250 ~3300 ~3400 #3600	2800 2900 3250 ~3250 ^3300 #3600 ~3700	2900 3250 #3250 #3600
Thickness of the floor slabs (excluding plaster) of each residential property (mm) 每個住宅物業的樓板(不包括灰泥)厚度(毫米)		150 175 200	150 200	150 200	150 175

- # Inclusive of the sunken depth of the sunken electrical and mechanical zone on the floor of this floor (350mm).
- ^ Inclusive of the sunken depth of the sunken electrical and mechanical zone on the floor of this floor (400mm).
- ° Inclusive of the sunken depth of the sunken electrical and mechanical zone on the floor of this floor (425mm).
- ~ Inclusive of the sunken depth of the sunken electrical and mechanical zone on the floor of this floor (450mm).

The internal areas of the residential properties on the upper floors will generally be slightly larger than those on the lower floors because of the reducing thickness of the structural walls on the upper floors.
(Remark: This statement is not applicable to the Development.)

Notes:

1. The dimensions in the floor plans are all structural dimensions in millimetre.
2. Please refer to glossary in the beginning of this chapter for abbreviations shown in the floor plan.

- # 包括本層地台跌級機電層之跌級深度(350毫米)。
- ^ 包括本層地台跌級機電層之跌級深度(400毫米)。
- ° 包括本層地台跌級機電層之跌級深度(425毫米)。
- ~ 包括本層地台跌級機電層之跌級深度(450毫米)。

因住宅物業的較高樓層的結構牆的厚度遞減，較高樓層的內部面積，一般比較低樓層的內部面積稍大。
(註：此陳述不適用於發展項目。)

備註：

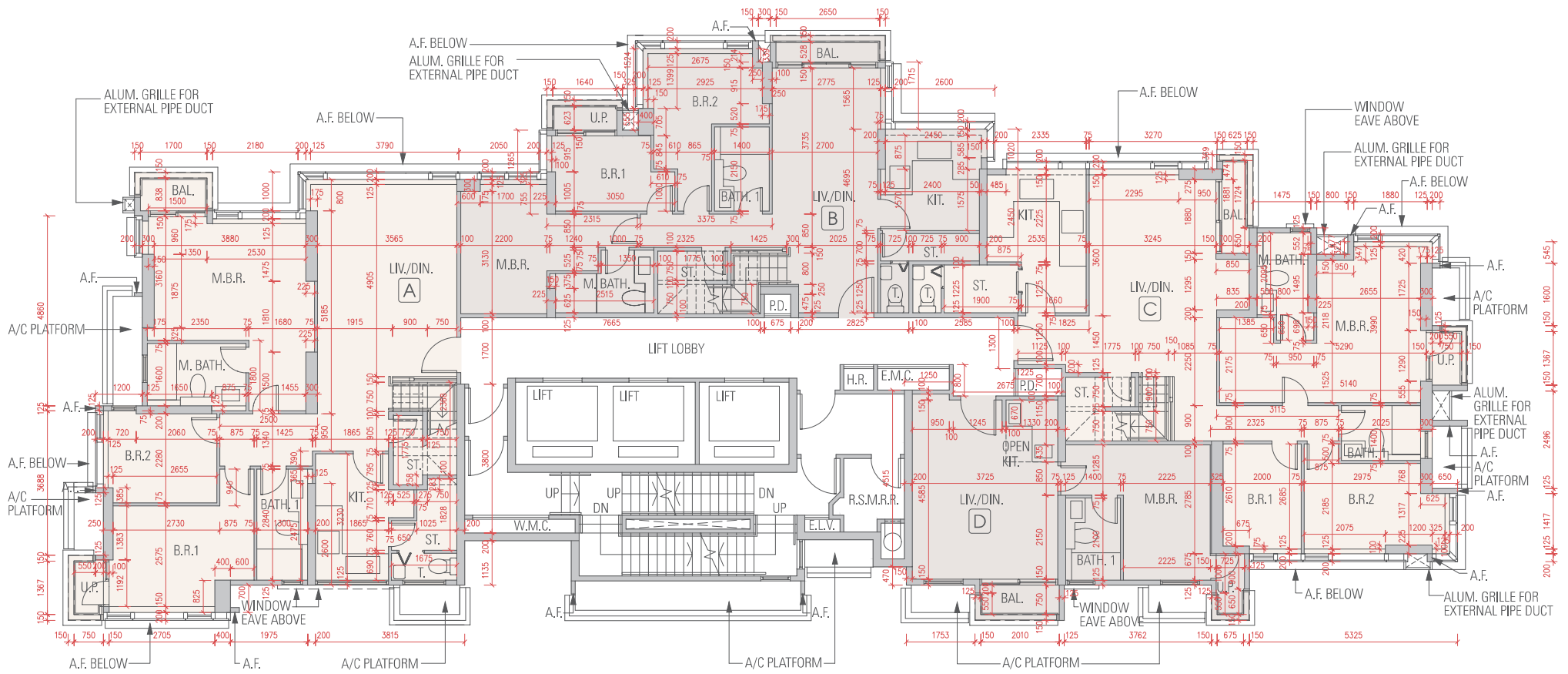
1. 樓面平面圖所列之尺寸為以毫米標示之建築結構尺寸。
2. 有關平面圖中顯示之英文簡稱之詮釋，請參閱本章節開首之詞彙表。

11 FLOOR PLANS OF RESIDENTIAL PROPERTIES IN THE DEVELOPMENT

發展項目的住宅物業的樓面平面圖

30 /F Floor Plan

樓平面圖



11 FLOOR PLANS OF RESIDENTIAL PROPERTIES IN THE DEVELOPMENT

發展項目的住宅物業的樓面平面圖

30 /F Floor Plan

樓平面圖

	FLOOR 樓層	FLAT 單位			
		A	B	C	D
Floor-to-floor height (refers to the height between the top surface of the structural slab of a floor and the top surface of the structural slab of its immediate upper floor) of each residential property (mm) 每個住宅物業的層與層之間的高度(指該樓層之石屎地台面與上一層石屎地台面之高度距離)(毫米)	30/F 30樓	3450 °3875 ~3900	3450 *3750 #3800 ^3850 #4200	3450 #3800 3850 ~3900 #4200	3450 #3800 3850 #4200
Thickness of the floor slabs (excluding plaster) of each residential property (mm) 每個住宅物業的樓板(不包括灰泥)厚度(毫米)		150 175 200	150 200	150 200	150 175

- * Inclusive of the sunken depth of the sunken electrical and mechanical zone on the floor of this floor (300mm).
- # Inclusive of the sunken depth of the sunken electrical and mechanical zone on the floor of this floor (350mm).
- ^ Inclusive of the sunken depth of the sunken electrical and mechanical zone on the floor of this floor (400mm).
- ° Inclusive of the sunken depth of the sunken electrical and mechanical zone on the floor of this floor (425mm).
- ~ Inclusive of the sunken depth of the sunken electrical and mechanical zone on the floor of this floor (450mm).

The internal areas of the residential properties on the upper floors will generally be slightly larger than those on the lower floors because of the reducing thickness of the structural walls on the upper floors.
(Remark: This statement is not applicable to the Development.)

Notes:

1. The dimensions in the floor plans are all structural dimensions in millimetre.
2. Please refer to glossary in the beginning of this chapter for abbreviations shown in the floor plan.

- * 包括本層地台跌級機電層之跌級深度(300毫米)。
- # 包括本層地台跌級機電層之跌級深度(350毫米)。
- ^ 包括本層地台跌級機電層之跌級深度(400毫米)。
- ° 包括本層地台跌級機電層之跌級深度(425毫米)。
- ~ 包括本層地台跌級機電層之跌級深度(450毫米)。

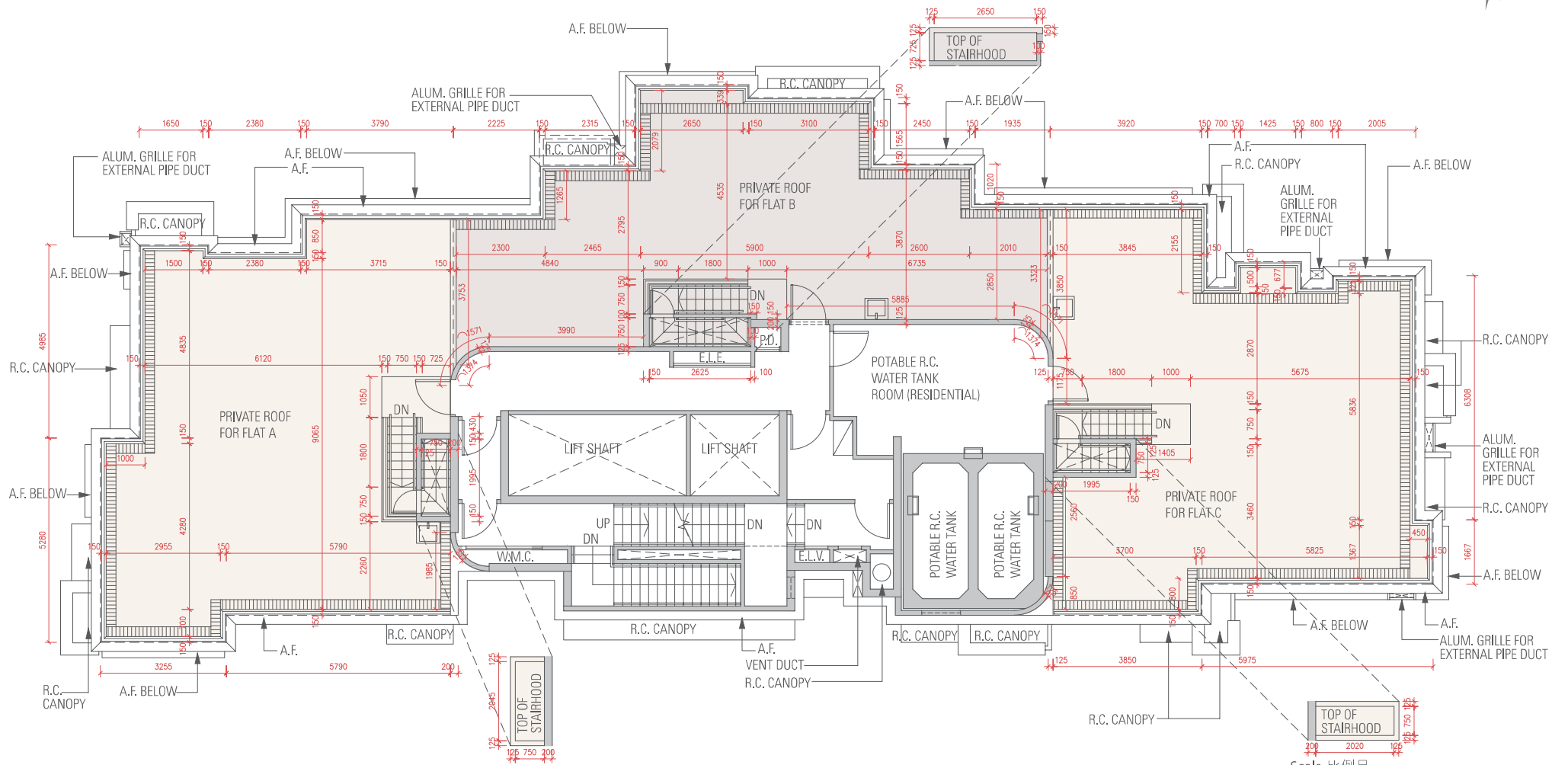
因住宅物業的較高樓層的結構牆的厚度遞減，較高樓層的內部面積，一般比較低樓層的內部面積稍大。
(註：此陳述不適用於發展項目。)

備註：

1. 樓面平面圖所列之尺寸為以毫米標示之建築結構尺寸。
2. 有關平面圖中顯示之英文簡稱之詮釋，請參閱本章節開首之詞彙表。

11 FLOOR PLANS OF RESIDENTIAL PROPERTIES IN THE DEVELOPMENT 發展項目的住宅物業的樓面平面圖

ROOF Plan 天台平面圖



11 FLOOR PLANS OF RESIDENTIAL PROPERTIES IN THE DEVELOPMENT

發展項目的住宅物業的樓面平面圖

ROOF Plan

天台平面圖

	FLOOR 樓層	FLAT 單位		
		A	B	C
Floor-to-floor height (refers to the height between the top surface of the structural slab of a floor and the top surface of the structural slab of its immediate upper floor) of each residential property (mm) 每個住宅物業的層與層之間的高度(指該樓層之石屎地台面與上一層石屎地台面之高度距離)(毫米)	Roof 天台	**2550	**2550	**2550
Thickness of the floor slabs (excluding plaster) of each residential property (mm) 每個住宅物業的樓板(不包括灰泥)厚度(毫米)		150	150	150

** Applicable to stairhood only.

The internal areas of the residential properties on the upper floors will generally be slightly larger than those on the lower floors because of the reducing thickness of the structural walls on the upper floors.
 (Remark: This statement is not applicable to the Development.)

Notes:

1. The dimensions in the floor plans are all structural dimensions in millimetre.
2. Please refer to glossary in the beginning of this chapter for abbreviations shown in the floor plan.

** 僅適用於梯屋。

因住宅物業的較高樓層的結構牆的厚度遞減，較高樓層的內部面積，一般比較低樓層的內部面積稍大。
 (註：此陳述不適用於發展項目。)

備註：

1. 樓面平面圖所列之尺寸為以毫米標示之建築結構尺寸。
2. 有關平面圖中顯示之英文簡稱之詮釋，請參閱本章節開首之詞彙表。