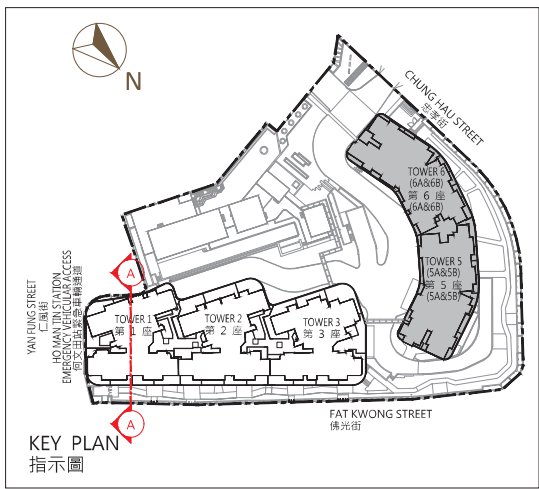
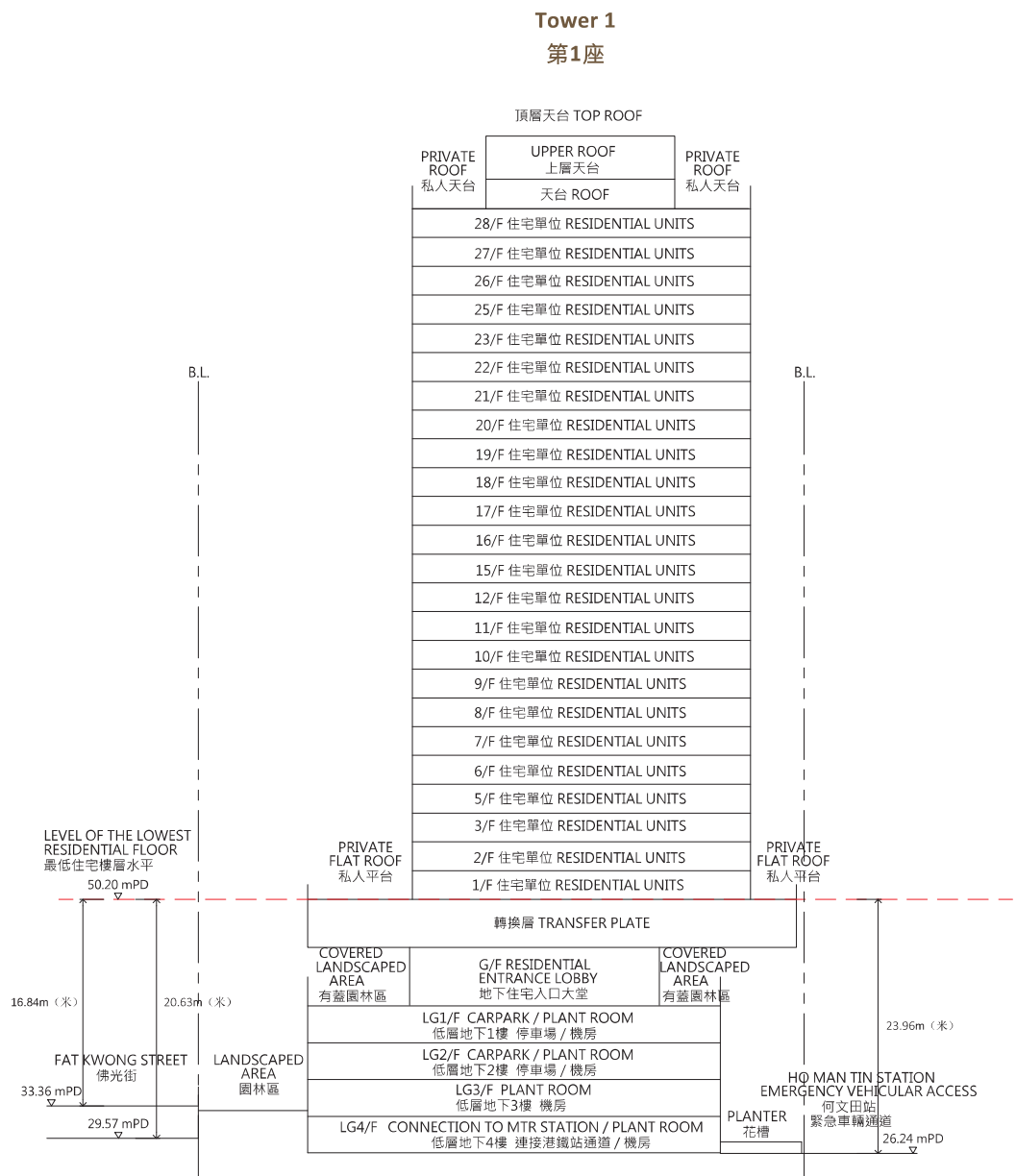


19 CROSS-SECTION PLAN OF BUILDING IN THE PHASE 期數中的建築物的橫截面圖

Cross-section Plan A-A
橫截面圖A-A



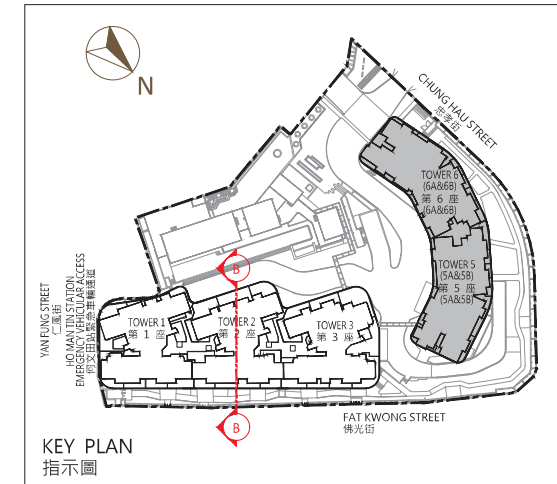
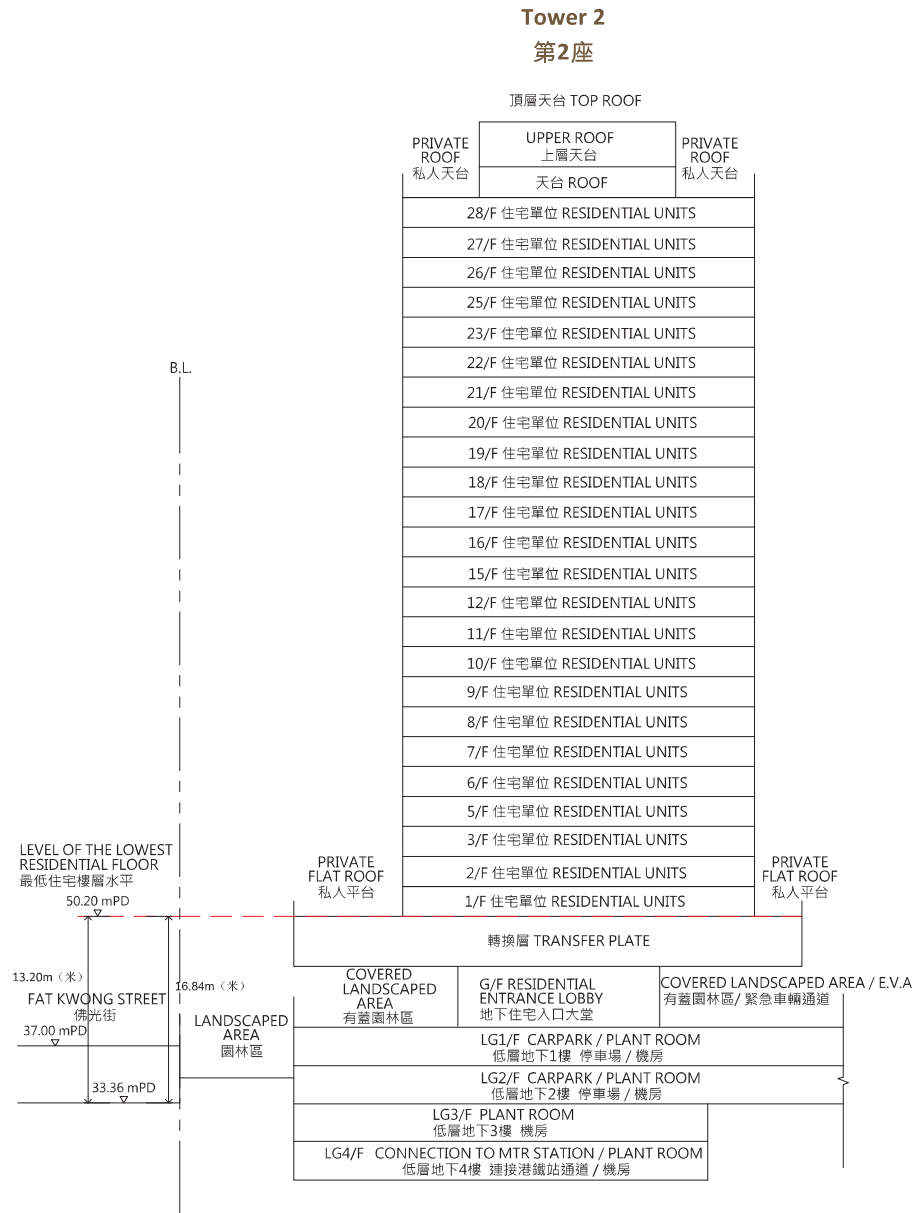
Notation 圖例

- B.L.----- Boundary of Phase II Development 第II期發展項目的界線
- Dotted line denotes the level of the lowest residential floor (HKPD). 虛線為最低住宅樓層水平。
- ▽ denotes height (in metres) above the Hong Kong Principal Datum. 代表香港主水平基準以上的高度(米)。

Notes: 備註:

- The part of Fat Kwong Street adjacent to the building is 29.57 meters to 33.36 metres above the Hong Kong Principal Datum (HKPD).
- 毗連建築物的一段佛光街為香港主水平基準以上29.57米至33.36米。
- The part of Ho Man Tin Station Emergency Vehicular Access adjacent to the building is 26.24 metres above the Hong Kong Principal Datum (HKPD).
- 毗連建築物的一段何文田站緊急車輛通道為香港主水平基準以上26.24米。

Cross-section Plan B-B
橫截面圖B-B



Notation

圖例

- B.L.----- Boundary of Phase II of the Development
發展項目第II期的界線
- Dotted line denotes the level of the lowest residential floor (HKPD).
虛線為最低住宅樓層水平。
- ▽ denotes height (in metres) above the Hong Kong Principal Datum.
代表香港主水平基準以上的高度(米)。
- E.V.A Emergency Vehicular Access
緊急車輛通道

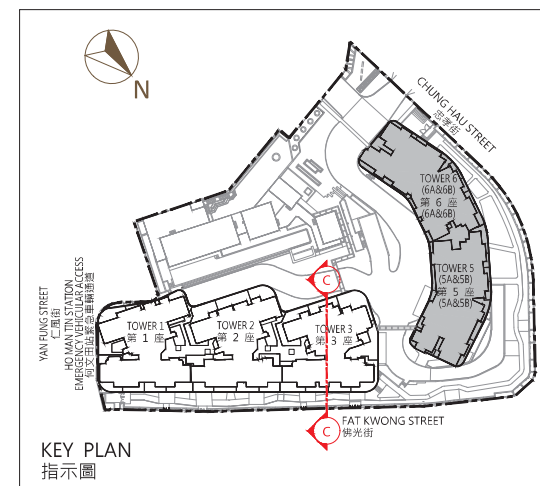
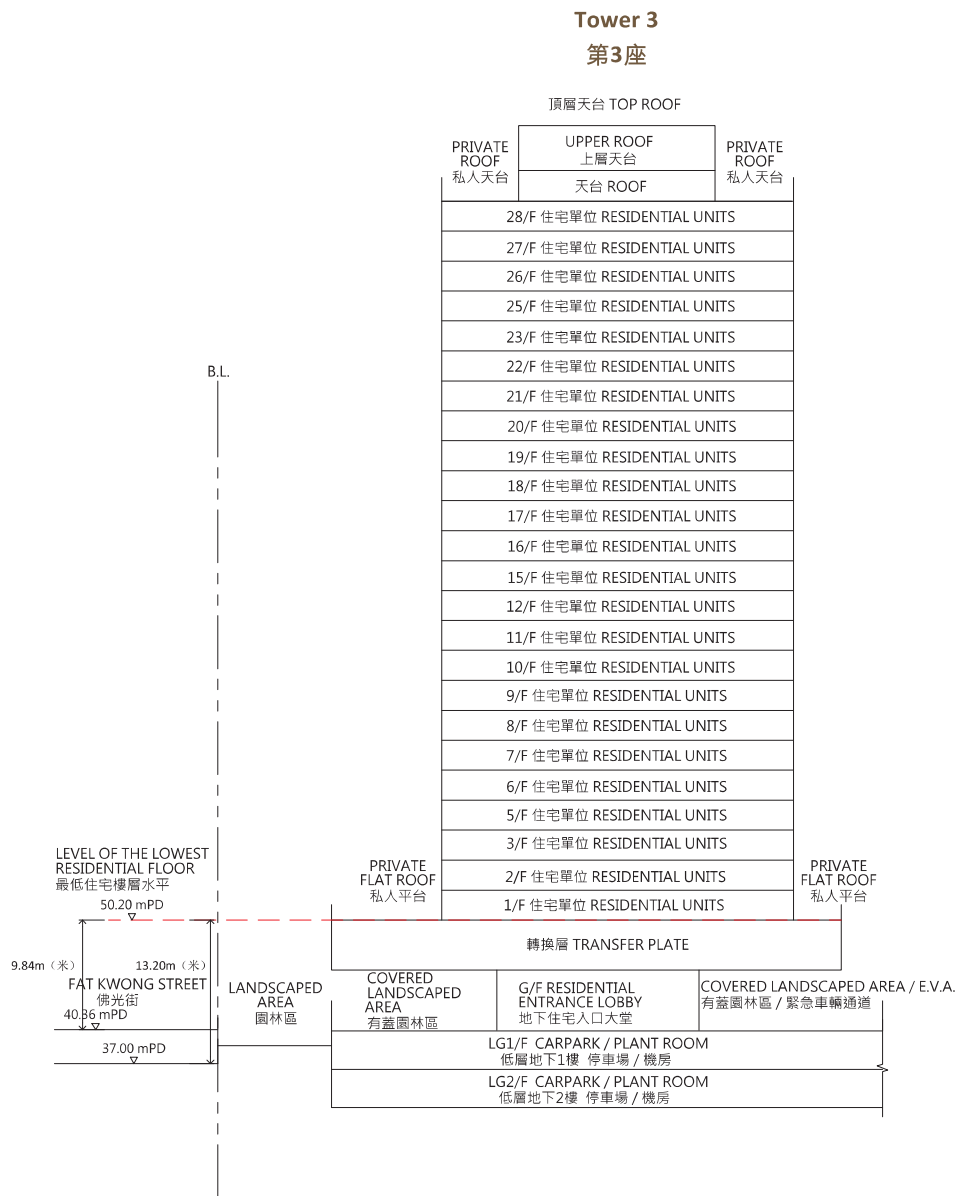
Notes :

備註 :

- The part of Fat Kwong Street adjacent to the building is 33.36 meters to 37.00 metres above the Hong Kong Principal Datum (HKPD).
- 毗連建築物的一段佛光街為香港主水平基準以上33.36米至37.00米。

19 CROSS-SECTION PLAN OF BUILDING IN THE PHASE 期數中的建築物的橫截面圖

Cross-section Plan C-C
橫截面圖C-C



**Notation
圖例**

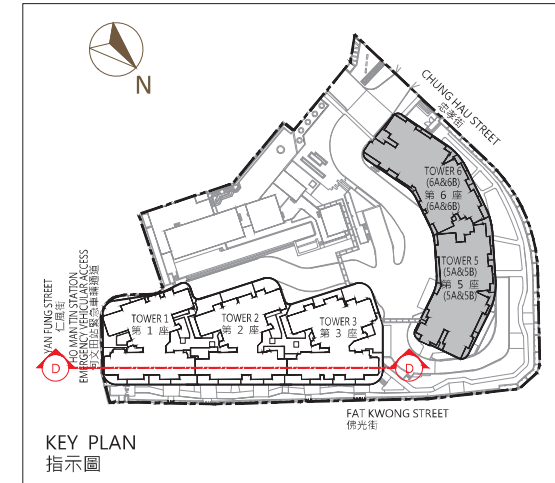
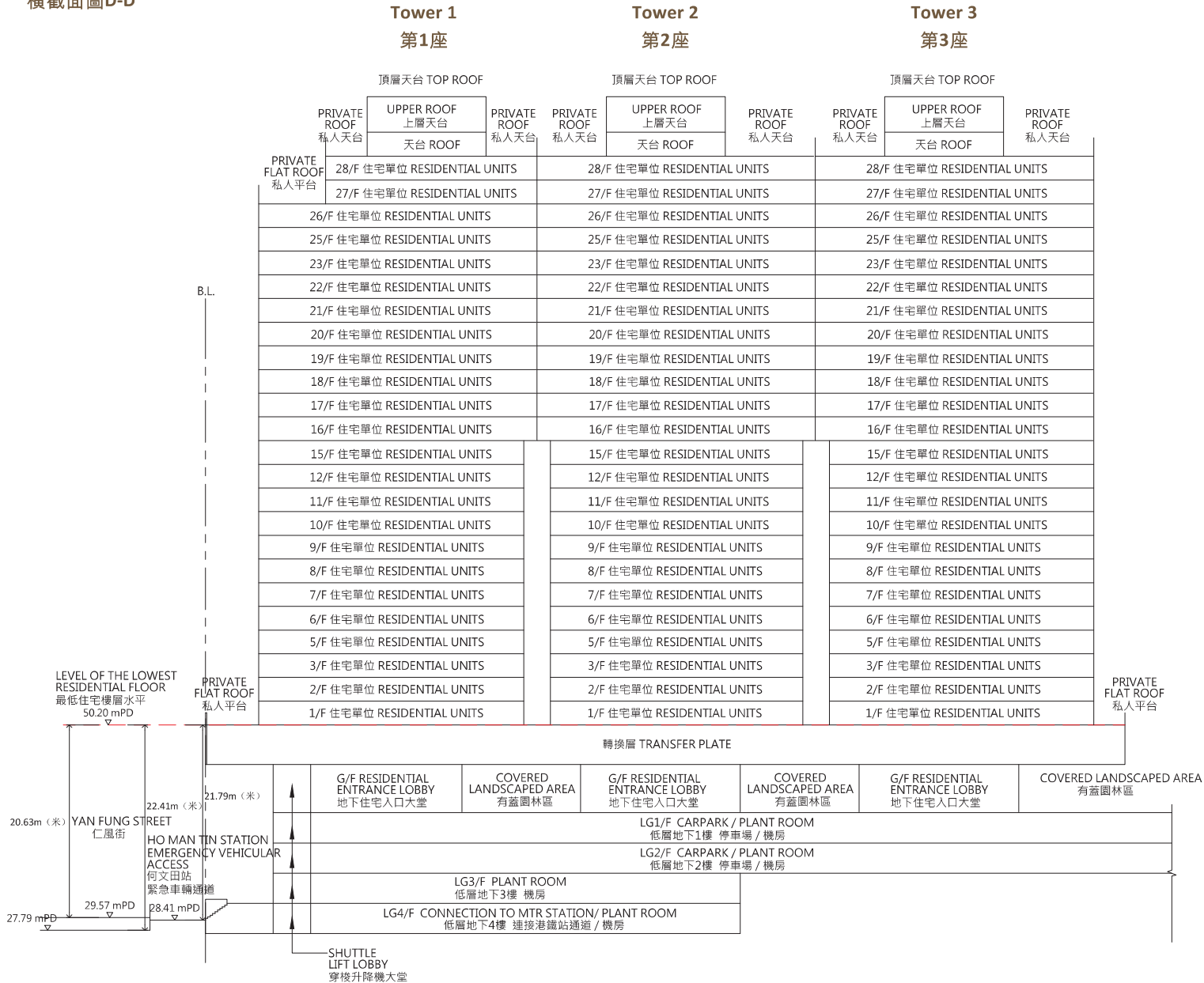
- B.L. ——— Boundary of Phase II of the Development
發展項目第II期的界線
- Dotted line denotes the level of the lowest residential floor (HKPD).
虛線為最低住宅樓層水平。
- ▽ denotes height (in metres) above the Hong Kong Principal Datum.
代表香港主水平基準以上的高度(米)。
- E.V.A Emergency Vehicular Access
緊急車輛通道

**Notes:
備註:**

- The part of Fat Kwong Street adjacent to the building is 37.00 meters to 40.36 metres above the Hong Kong Principal Datum (HKPD).
- 毗連建築物的一段佛光街為香港主水平基準以上37.00米至40.36米。

19 CROSS-SECTION PLAN OF BUILDING IN THE PHASE II 期數中的建築物的橫截面圖

Cross-section Plan D-D
橫截面圖D-D



Notation
圖例

- B.L.----- Boundary of Phase II of the Development
發展項目II期的界線
- Dotted line denotes the level of the lowest residential floor (HKPD).
虛線為最低住宅樓層水平。
- ▽ denotes height (in metres) above the Hong Kong Principal Datum.
代表香港主水平基準以上的高度(米)。

Notes
備註:

- The part of Yan Fung Street adjacent to the building is 27.79meters to 29.57metres above the Hong Kong Principal Datum (HKPD).
- 毗連建築物的一段仁風街為香港主水平基準以上27.79米至29.57米。
- The part of Ho Man Tin Station Emergency Vehicular Access adjacent to the building is 28.41 metres above the Hong Kong Principal Datum (HKPD).
- 毗連建築物的一段何文田站緊急車輛通道為香港主水平基準以上28.41米。