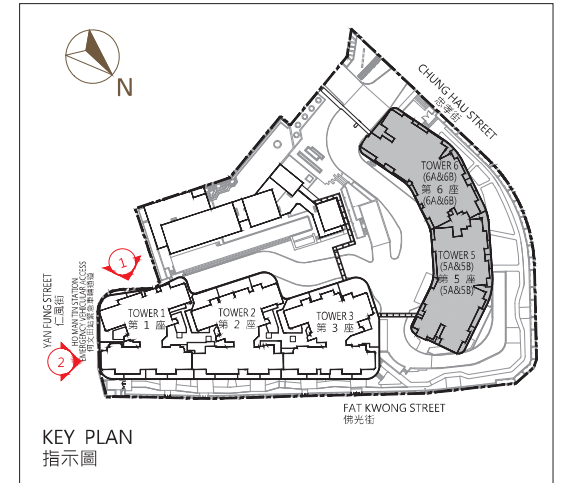
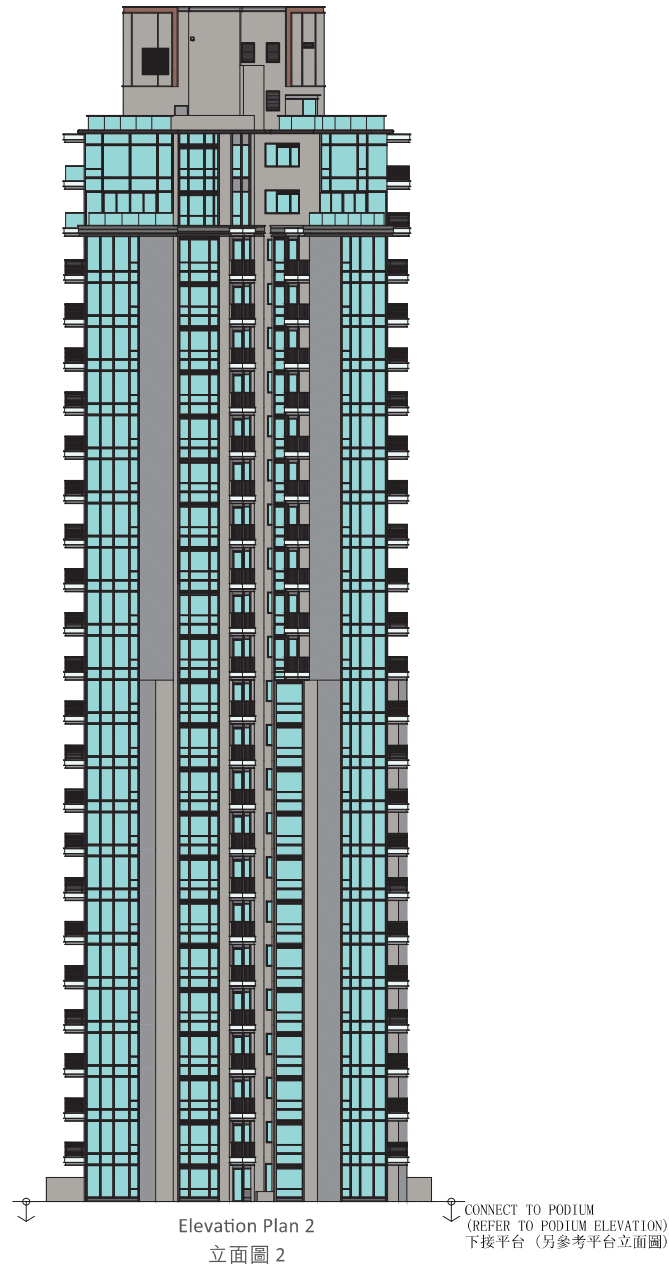
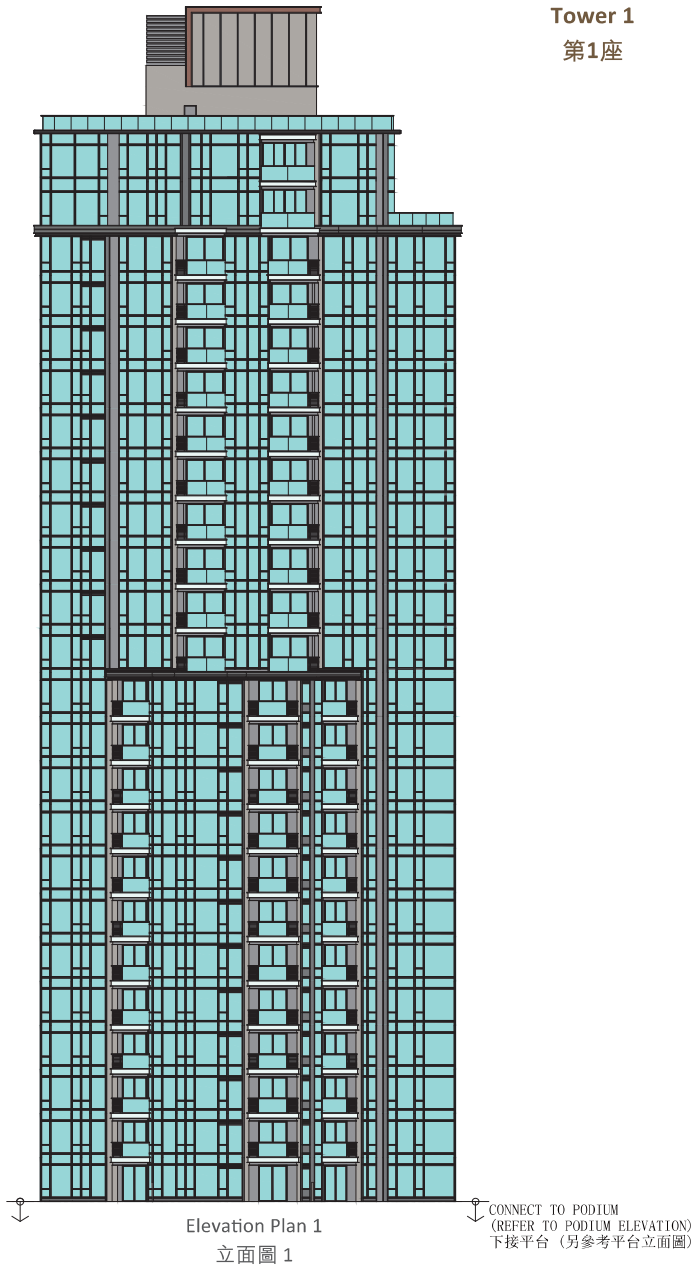


Tower 1
第1座



Authorized Person for the Phase has certified that the elevations shown on these plans:

期數的認可人士證明本圖所顯示的立面：

1. are prepared on the basis of the approved building plans for the Phase as of 27 December 2023 and the approved phasing plans for the Phase as of 29 June 2023; and 以2023年12月27日的情況為準的期數的經批准的建築圖則及以2023年6月29日的情況為準的期數的經批准的期數圖則為基礎擬備。
2. are in general accordance with the outward appearance of the Phase. 大致上與本期數的外觀一致。

Tower 1
第1座



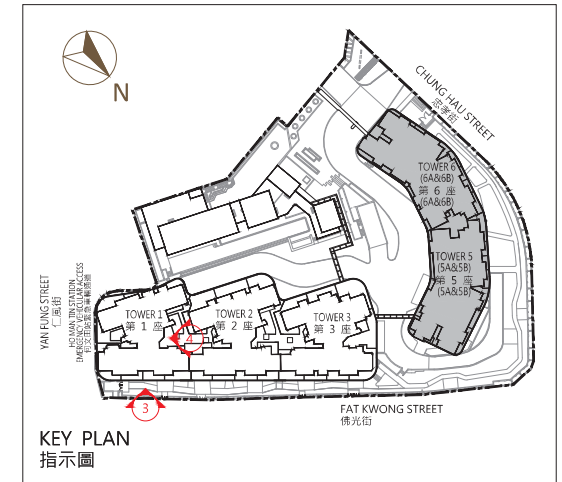
Elevation Plan 3
立面圖 3

CONNECT TO PODIUM
(REFER TO PODIUM ELEVATION)
下接平台 (另參考平台立面圖)



Elevation Plan 4
立面圖 4

CONNECT TO PODIUM
(REFER TO PODIUM ELEVATION)
下接平台 (另參考平台立面圖)

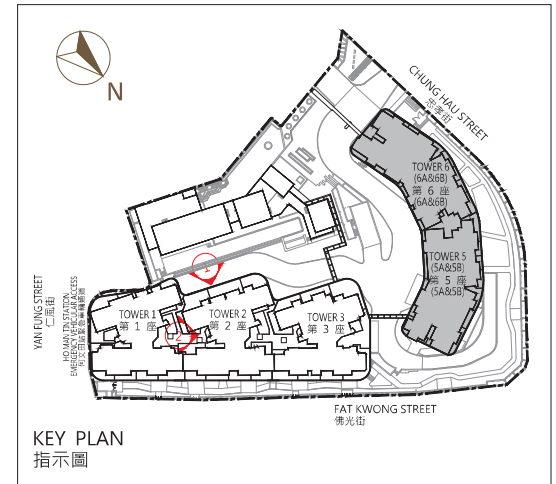
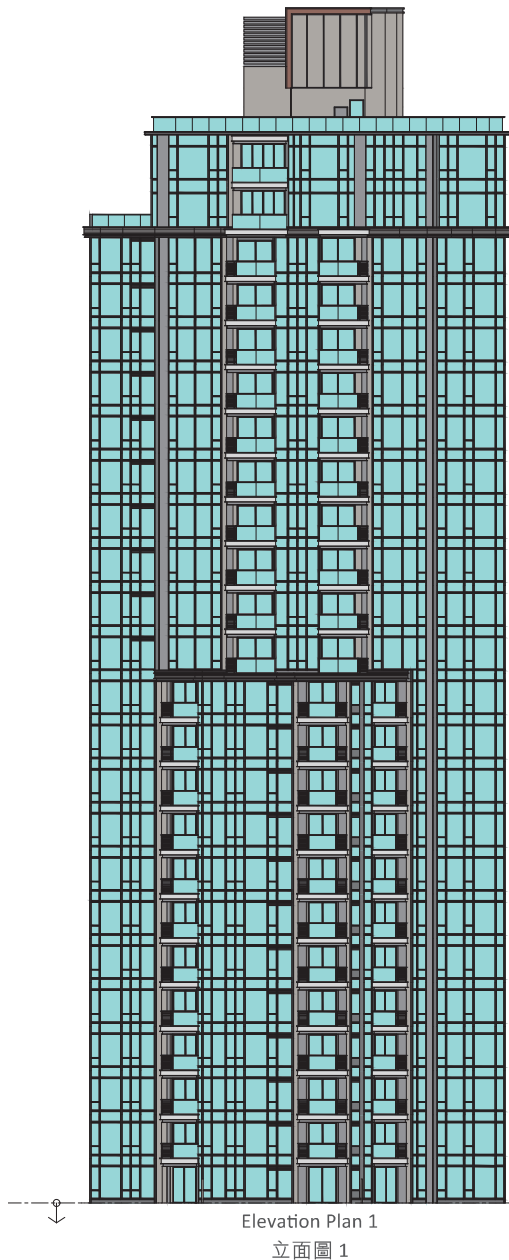


KEY PLAN
指示圖

Authorized Person for the Phase has certified that the elevations shown on these plans:
期數的認可人士證明本圖所顯示的立面：

- are prepared on the basis of the approved building plans for the Phase as of 27 December 2023 and the approved phasing plans for the Phase as of 29 June 2023; and 以2023年12月27日的情況為準的期數的經批准的建築圖則及以2023年6月29日的情況為準的期數的經批准的期數圖則為基礎擬備。
- are in general accordance with the outward appearance of the Phase.
大致上與本期數的外觀一致。

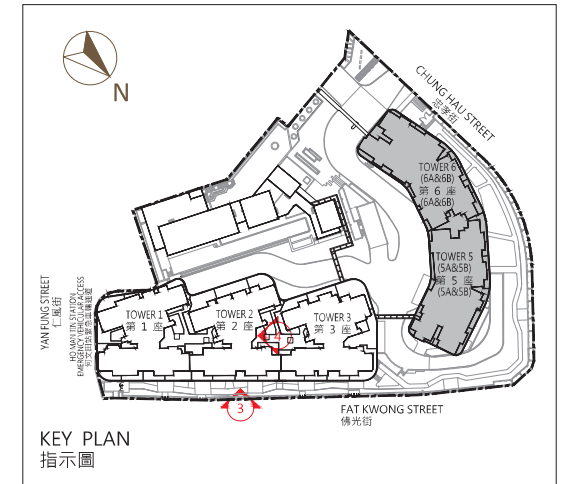
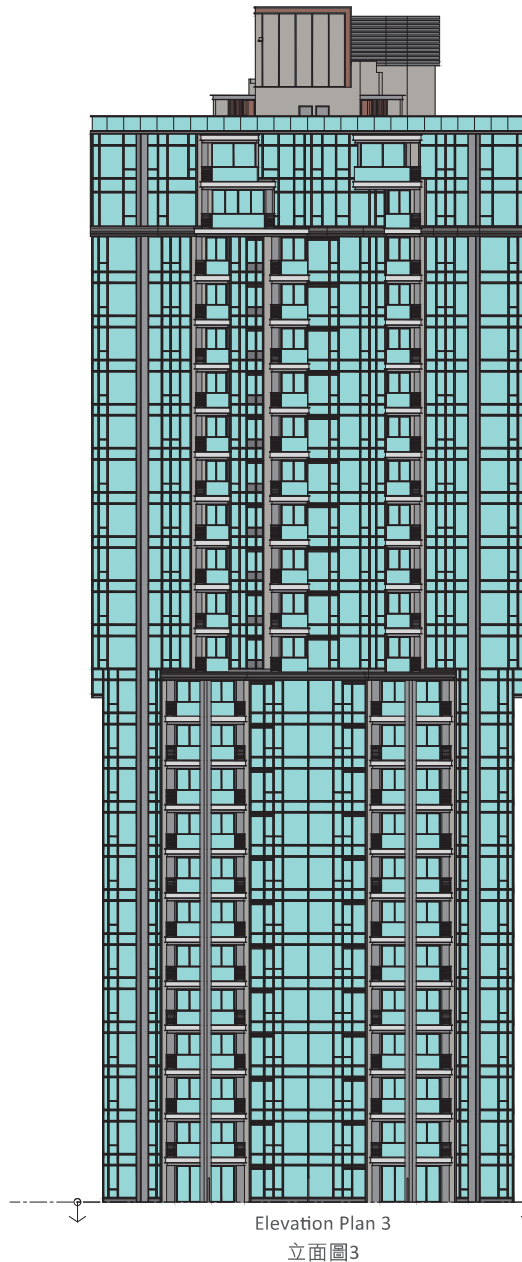
Tower 2
第2座



Authorized Person for the Phase has certified that the elevations shown on these plans:
期數的認可人士證明本圖所顯示的立面：

1. are prepared on the basis of the approved building plans for the Phase as of 27 December 2023 and the approved phasing plans for the Phase as of 29 June 2023; and 以2023年12月27日的情況為準的期數的經批准的建築圖則及以2023年6月29日的情況為準的期數的經批准的期數圖則為基礎擬備。
2. are in general accordance with the outward appearance of the Phase. 大致上與本期數的外觀一致。

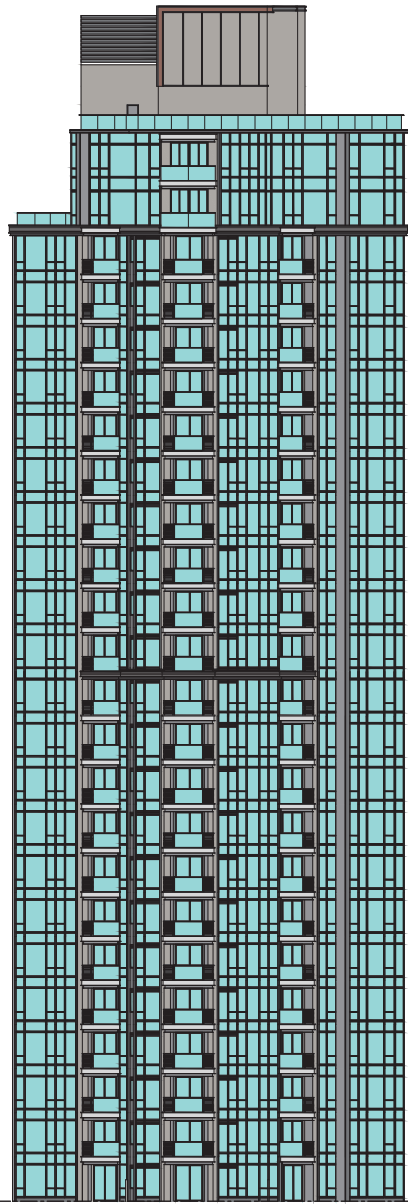
Tower 2
第2座



Authorized Person for the Phase has certified that the elevations shown on these plans:
期數的認可人士證明本圖所顯示的立面：

- are prepared on the basis of the approved building plans for the Phase as of 27 December 2023 and the approved phasing plans for the Phase as of 29 June 2023; and 以2023年12月27日的情況為準的期數的經批准的建築圖則及以2023年6月29日的情況為準的期數的經批准的期數圖則為基礎擬備。
- are in general accordance with the outward appearance of the Phase.
大致上與本期數的外觀一致。

Tower 3
第3座



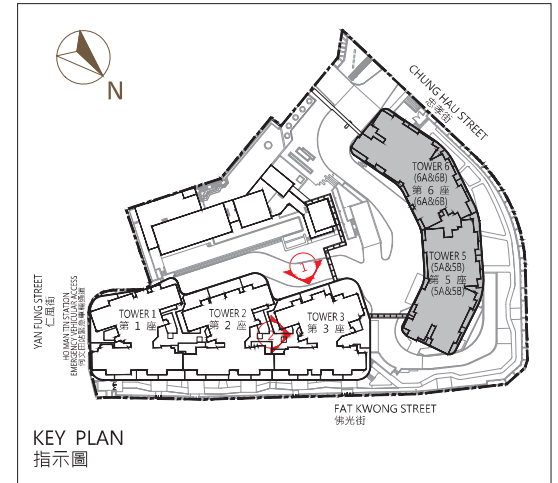
Elevation Plan 1
立面圖 1

CONNECT TO PODIUM
(REFER TO PODIUM ELEVATION)
下接平台 (另參考平台立面圖)



Elevation Plan 2
立面圖 2

CONNECT TO PODIUM
(REFER TO PODIUM ELEVATION)
下接平台 (另參考平台立面圖)



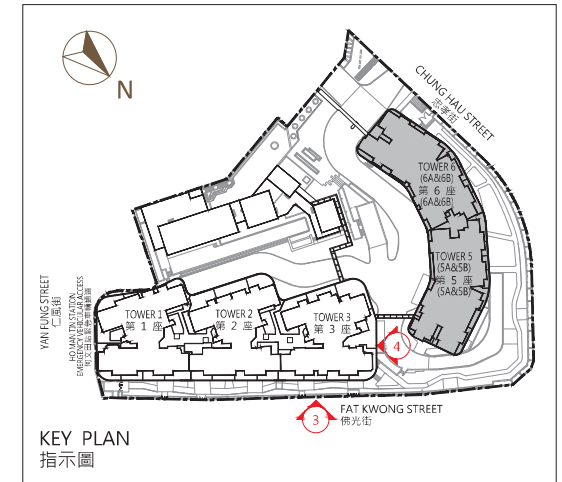
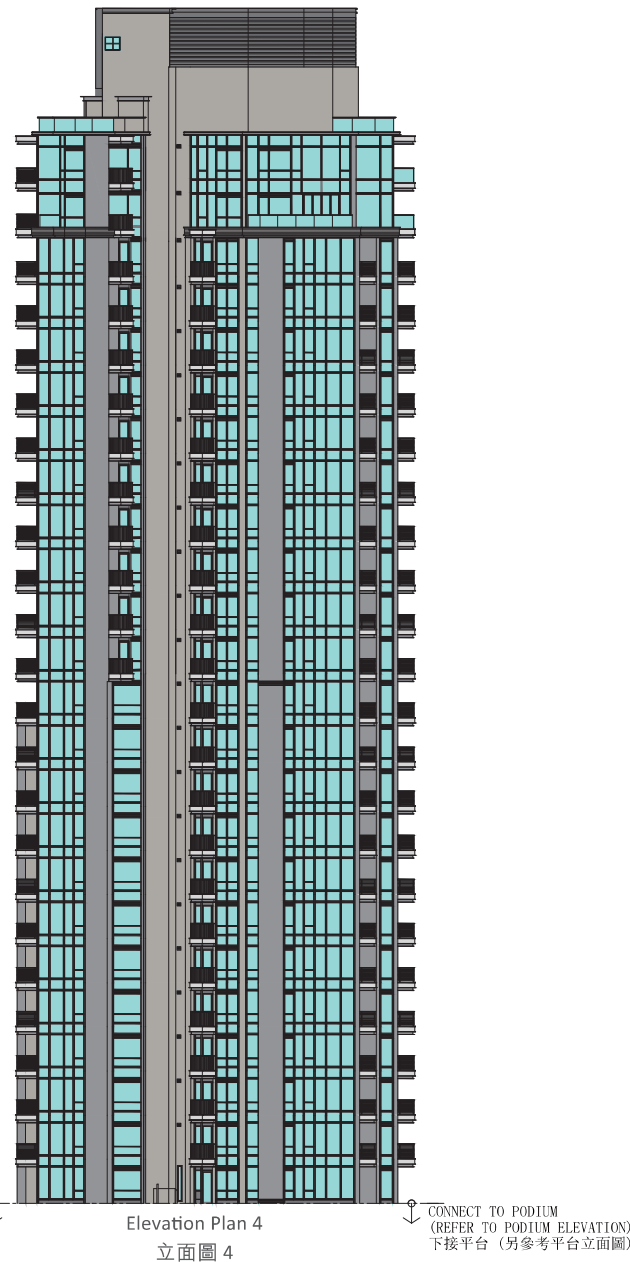
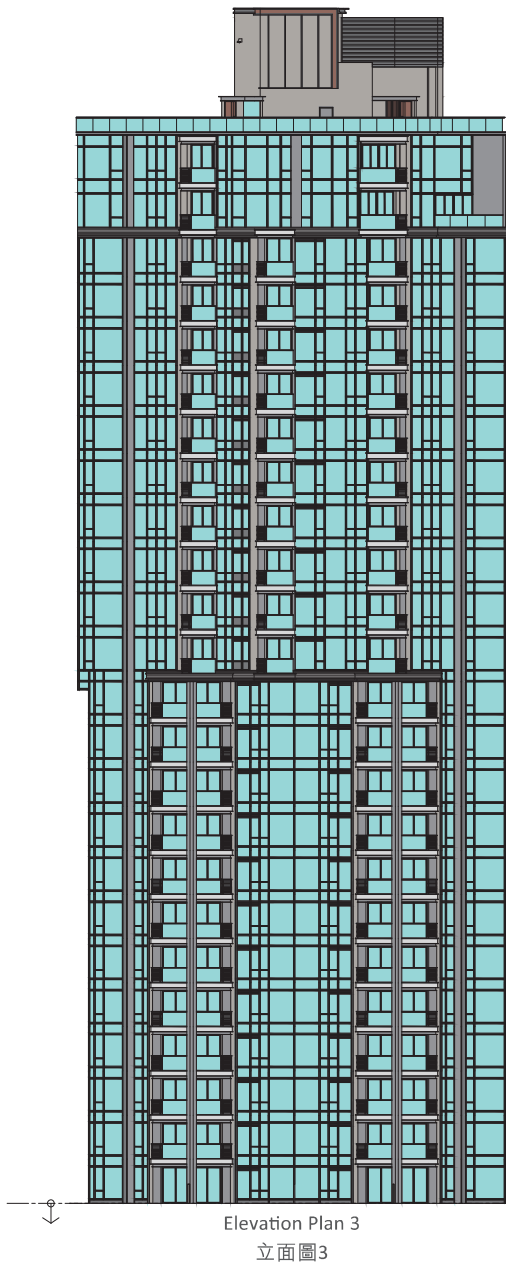
KEY PLAN
指示圖

Authorized Person for the Phase has certified that the elevations shown on these plans:

期數的認可人士證明本圖所顯示的立面：

1. are prepared on the basis of the approved building plans for the Phase as of 27 December 2023 and the approved phasing plans for the Phase as of 29 June 2023; and 以2023年12月27日的情況為準的期數的經批准的建築圖則及以2023年6月29日的情況為準的期數的經批准的期數圖則為基礎擬備。
2. are in general accordance with the outward appearance of the Phase. 大致上與本期數的外觀一致。

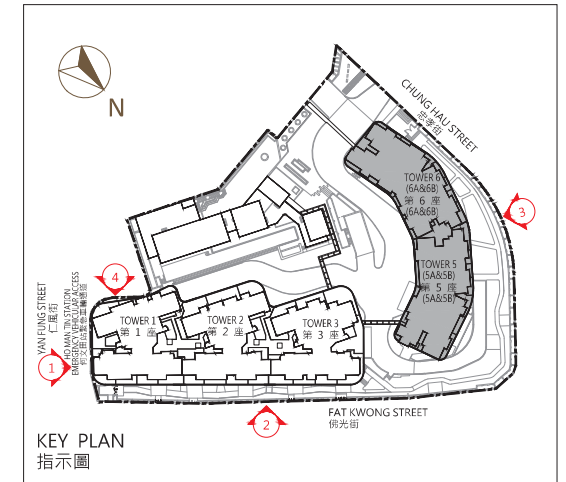
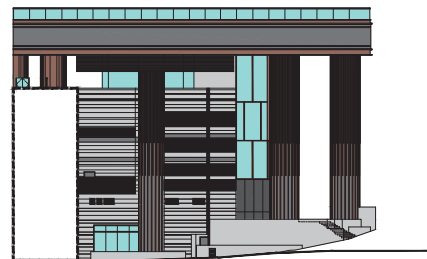
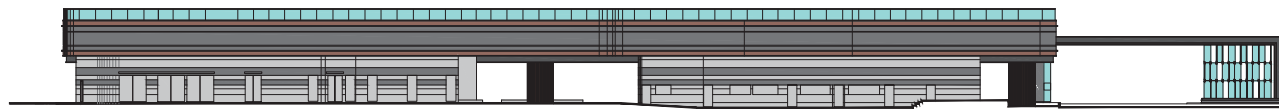
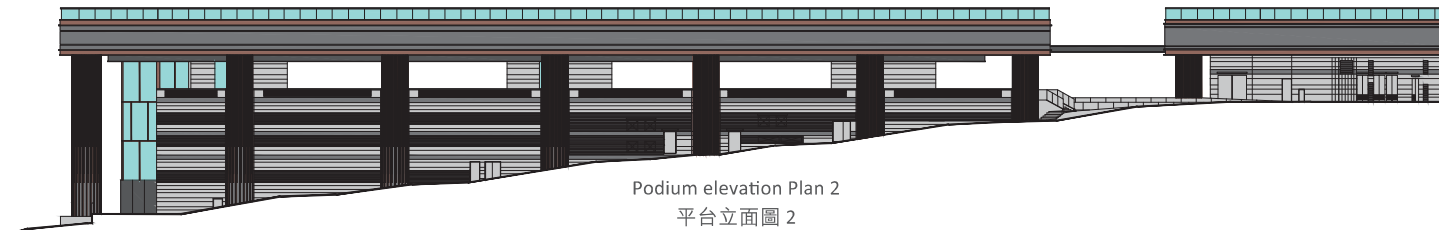
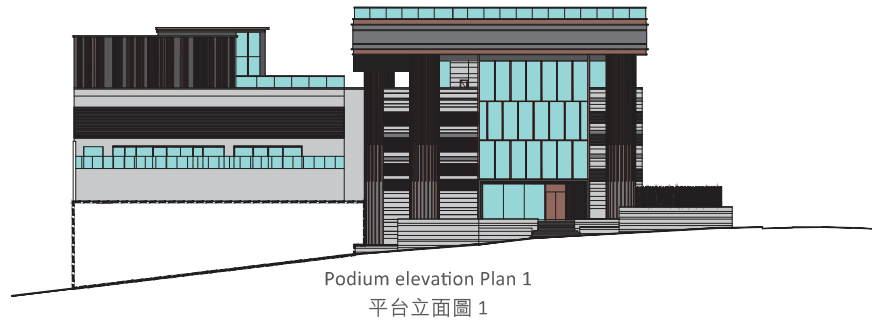
Tower 3
第3座



Authorized Person for the Phase has certified that the elevations shown on these plans:

期數的認可人士證明本圖所顯示的立面：

1. are prepared on the basis of the approved building plans for the Phase as of 27 December 2023 and the approved phasing plans for the Phase as of 29 June 2023; and 以2023年12月27日的情況為準的期數的經批准的建築圖則及以2023年6月29日的情況為準的期數的經批准的期數圖則為基礎擬備。
2. are in general accordance with the outward appearance of the Phase. 大致上與本期數的外觀一致。



Authorized Person for the Phase has certified that the elevations shown on these plans:
期數的認可人士證明本圖所顯示的立面：

1. are prepared on the basis of the approved building plans for the Phase as of 27 December 2023 and the approved phasing plans for the Phase as of 29 June 2023; and 以2023年12月27日的情況為準的期數的經批准的建築圖則及以2023年6月29日的情況為準的期數的經批准的期數圖則為基礎擬備。
2. are in general accordance with the outward appearance of the Phase.
大致上與本期數的外觀一致。