

## Legend of the terms and abbreviations used on floor plans

樓面平面圖中所使用之名詞及簡稱之圖例

AT _ /F ONLY	= AT _ /F ONLY	= 只設於_樓
A/C PLATFORM	= AIR-CONDITIONING PLATFORM	= 冷氣機平台
A.D.	= AIR DUCT	= 通風槽
A.F.	= ARCHITECTURAL FEATURE	= 建築裝飾
A.F. ABOVE	= ARCHITECTURAL FEATURE ABOVE	= 建築裝飾置上
A.W.	= ^ACOUSTIC WINDOW (BAFFLE-TYPE)	= ^減音窗戶(擋音式)
BAL.	= BALCONY	= 露台
BAL. ABOVE	= BALCONY ABOVE	= 露台置上
BAL.*	= ^ACOUSTIC BALCONY (BAFFLE-TYPE)	= ^減音露台(擋音式)
BAL. & U.P. ABOVE	= BALCONY AND UTILITY PLATFORM ABOVE	= 露台及工作平台置上
BATH	= BATHROOM	= 浴室
BR	= BEDROOM	= 睡房
BUILDING LINE ABOVE	= BUILDING LINE ABOVE	= 建築物線置上
CLO AREA	= CLOSET AREA	= 衣帽間
COMMON FLAT ROOF	= COMMON FLAT ROOF	= 公用平台
DIN	= DINING ROOM	= 飯廳
DN	= DOWN	= 落
DOG HOUSE	= DOG HOUSE	= 喉管罩室
ELE.	= ELECTRICAL ROOM	= 電房
ELV.	= EXTRA-LOW VOLTAGE ROOM	= 特低壓電房
ELV. DUCT	= EXTRA-LOW VOLTAGE DUCT	= 特低壓電槽
E.A.D.	= EXHAUST AIR DUCT	= 排氣管
FAN ROOM	= FAN ROOM	= 風機房
FIREMAN'S LOBBY	= FIREMAN'S LIFT LOBBY	= 消防員升降機大堂

FLAT ROOF	= FLAT ROOF	= 平台
FLUSHING BOOSTER PUMP ROOM	= FLUSHING BOOSTER PUMP ROOM	= 沖廁水泵房
FLUSHING WATER TANK	= FLUSHING WATER TANK	= 沖廁水水缸
FOYER	= FOYER	= 門廳
F.H.	= FIRE HYDRANT	= 消防龍頭
F.G.	= #FIXED GLAZING (WITH OR WITHOUT MAINTENANCE WINDOW)	= #固定玻璃窗戶(配有或不配有維修用窗)
F.S. DUCT	= FIRE SERVICE PIPE DUCT	= 消防管槽
H.R.	= HOSE REEL	= 消防喉轆
H.R. at H/L	= HOSE REEL AT HIGH LEVEL	= 消防喉轆置於高位
INACCESSIBLE FLAT ROOF	= INACCESSIBLE FLAT ROOF	= 無法進入的平台
KIT	= KITCHEN	= 廚房
LAV	= LAVATORY	= 洗手間
LIV	= LIVING ROOM	= 客廳
LIFT	= LIFT	= 升降機
LIFT LOBBY	= LIFT LOBBY	= 升降機大堂
LIFT SHAFT	= LIFT SHAFT	= 升降機槽
LIFT 'A'	= FIREMAN'S LIFT	= 消防員升降機
LIFT 'ACC'	= ACCESSIBLE LIFT	= 暢通易達升降機
MBR	= MASTER BEDROOM	= 主人睡房
M BATH	= MASTER BATHROOM	= 主人浴室
OPEN KIT	= OPEN KITCHEN	= 開放式廚房
PENTHOUSE	= PENTHOUSE	= 頂層公寓
POWDER ROOM	= POWDER ROOM	= 化妝間
POTABLE BOOSTER PUMP ROOM	= POTABLE BOOSTER PUMP ROOM	= 食水泵房

# 11 FLOOR PLANS OF RESIDENTIAL PROPERTIES IN THE PHASE 期數的住宅物業的樓面平面圖



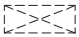
## Legend of the terms and abbreviations used on floor plans

### 樓面平面圖中所使用之名詞及簡稱之圖例

POTABLE WATER TANK	= POTABLE WATER TANK	= 食水水缸
PRIVATE FLAT ROOF	= PRIVATE FLAT ROOF	= 私人平台
PRIVATE ROOF	= PRIVATE ROOF	= 私人天台
P.D.	= PIPE DUCT	= 管道槽
ROOF OF STAIRHOOD	= ROOF OF STAIRHOOD	= 梯屋天台
R.C. CANOPY	= REINFORCED CONCRETE CANOPY	= 鋼筋混凝土簷篷
R.S.M.R.R.	= REFUSE STORAGE AND MATERIAL RECOVERY ROOM	= 垃圾及物料回收房
SINK	= SINK	= 洗滌槽
STORE	= STORE ROOM	= 儲物室
TOWER *	= TOWER *	= 第*座
VENT SHAFT	= VENT SHAFT	= 通風井

#### Remark:

- There may be architectural features and / or exposed pipes on external walls, flat roofs, private flat roof, private roof, common flat roofs, balcony, utility platform, air-conditioner platform of some floors.
- There may be ceiling bulkheads or suspended ceiling at living room, dining room, bedroom, corridor, bathroom, store, open kitchen and / or kitchen of some residential properties for the air-conditioning system and / or conduits and / or mechanical and electrical services.
- The internal ceiling height within some residential properties may vary due to structural, architectural and/or decoration design variations.
- The indications of fittings such as sinks, bathtubs, water closet and wash basins, etc. shown on the floor plans are indications of approximate locations only and not indications of their actual size, design or shapes.
- There are exposed pipes mounted at part of flat roof and roof of each tower in the Phase. Only part of the exposed pipes are covered by aluminium cladding.
- For some residential properties, the air-conditioner platform(s) outside the residential unit will be placed with outdoor air conditioner unit(s) belonging to its unit and/or other units. The placement of these air-conditioner unit(s) may have heat and/or sounds.
- Balconies and utility platforms are non-enclosed area.
- During the necessary maintenance of the external walls of towers arranged by the Manager of the Phase, the gondola and lifting platforms will be operating in the airspace outside windows of residential properties and above flat roof/roof of such tower.
- There are curtain walls and/or non-structural prefabricated external walls in some/all the residential properties. The saleable area of a residential property has included the area of curtain walls and/or non-structural prefabricated external walls and is measured from the exterior of such curtain walls and/or non-structural prefabricated external walls.
- # Fixed glazing (with or without maintenance window) as indicated in the floor plans of the Phase are provided for noise mitigation.
- ^Acoustic window (baffle type) and ^Acoustic balcony (baffle type) as indicated in the floor plans of the Phase are provided for noise mitigation.

T.R.S.	= TEMPORARY REFUGE SPACE	= 臨時庇護處
UP	= UP	= 上
UT	= UTILITY	= 工作間
U.P.	= UTILITY PLATFORM	= 工作平台
U.P. ABOVE	= UTILITY PLATFORM ABOVE	= 工作平台置上
W.M.C.	= WATER METER CABINET	= 水錶櫃
	= AREA DESIGNATED AS COMMON AREAS IN DEED OF MUTUAL COVENANT PLAN	= 公契圖則訂明之公用地方
	= AREA DESIGNATED AS COMMON AREAS IN DEED OF MUTUAL COVENANT PLAN (FOR MAINTENANCE)	= 公契圖則訂明之公用地方 (維修用)
	= OUTDOOR UNIT OF AIR-CONDITIONER	= 冷氣機之室外機

#### 備註：

- 部份樓層外牆、平台、私人平台、私人天台、公用平台、露台、工作平台及/或冷氣機平台設有建築裝飾及/或外露喉管。
- 部分住宅物業的客廳、飯廳、睡房、走廊、浴室、儲物室、開放式廚房及/或廚房的裝飾橫樑或假天花內裝置冷氣系統及/或喉管及/或其他機電設備。
- 部份住宅物業之天花高度將會因應結構、建築及/或裝修設計上的需要而有差異。
- 樓面平面圖所展示之裝置如洗滌盤、浴缸、坐廁及洗面盆等只供展示其大概位置而非展示其實際大小、設計或形狀。
- 期數內的每座大樓的平台及天台上裝設有外露喉管，只有部份外露喉管被鋁質飾板所覆蓋。
- 部份住宅單位外的冷氣機平台將會放置其單位及/或其他單位的一部或多部冷氣戶外機。該等冷氣機的位置可能發出熱力及/或聲音。
- 露台及工作平台為不可封閉的地方。
- 在期數管理人安排於大廈外牆之必要維修進行期間，吊船及升降平台將在該等大廈的住宅物業之窗戶及平台/天台上之空間運作。
- 部份/全部住宅物業有幕牆及/或非結構的預製外牆。住宅物業之實用面積之計算包括幕牆及/或非結構的預製外牆之面積，並由幕牆及/或非結構的預製外牆之外圍起計。
- #固定玻璃窗戶（配有或不配有維修用窗）已在期數的樓面平面圖中顯示之位置提供以緩解噪音。
- ^減音窗戶（擋音式）及減音露台（擋音式）已在期數的樓面平面圖中顯示之位置提供以緩解噪音。

# 11 FLOOR PLANS OF RESIDENTIAL PROPERTIES IN THE PHASE 期數的住宅物業的樓面平面圖

Tower 1 | 1/F  
第1座 | 1樓



Scale: 0  
比例: 5M/米

# 11 FLOOR PLANS OF RESIDENTIAL PROPERTIES IN THE PHASE 期數的住宅物業的樓面平面圖

## Tower 1 | 1/F

### 第1座 | 1樓

Description 描述		The floor-to-floor height (refers to the height between the top surface of the structural slab of a floor and the top surface of the structural slab of its immediate upper floor) of each residential property (mm) 每個住宅物業的層與層之間的高度 (指該樓層之石屎地台面與上一層石屎地台面之高度距離) (毫米)							The thickness of the floor slabs (excluding plaster) of each residential property (mm) 每個住宅物業的樓板 (不包括灰泥) 的厚度 (毫米)							
Tower 座數	Floor 樓層	Unit 單位	A	B	C	D	E	F	G	A	B	C	D	E	F	G
Tower 1 第1座	1/F 1樓		3300, 3450, 3475, 3575, 3650	3275, 3300, 3450, 3475, 3575, 3650	3300, 3450, 3475, 3575, 3650	3300, 3475, 3575, 3650	3300, 3450, 3475, 3575, 3650	3300, 3450, 3475, 3575, 3650	3300, 3450, 3475, 3575, 3650	150, 175	150, 175	150, 175	150	150	150	150

The internal areas of the residential properties on the upper floors will generally be slightly larger than those on the lower floors because of the reducing thickness of the structural walls on the upper floors.

The internal ceiling height within part of the residential properties may vary due to structural, architectural and/or decoration design variations.

#### Notes:

1. The dimensions in the floor plans are all structural dimensions in millimetre and rounded off to the nearest integer.
2. For details of the noise mitigation measures, please refer to the Relevant Information section in this sales brochure.
3. Please refer to page 32 to page 33 of this sales brochure for legend of the terms and abbreviations shown in the floor plan.
4. Residential floors of the Phase are from 1/F to 28/F. There are no 4/F, 13/F, 14/F, 24/F in each Tower.

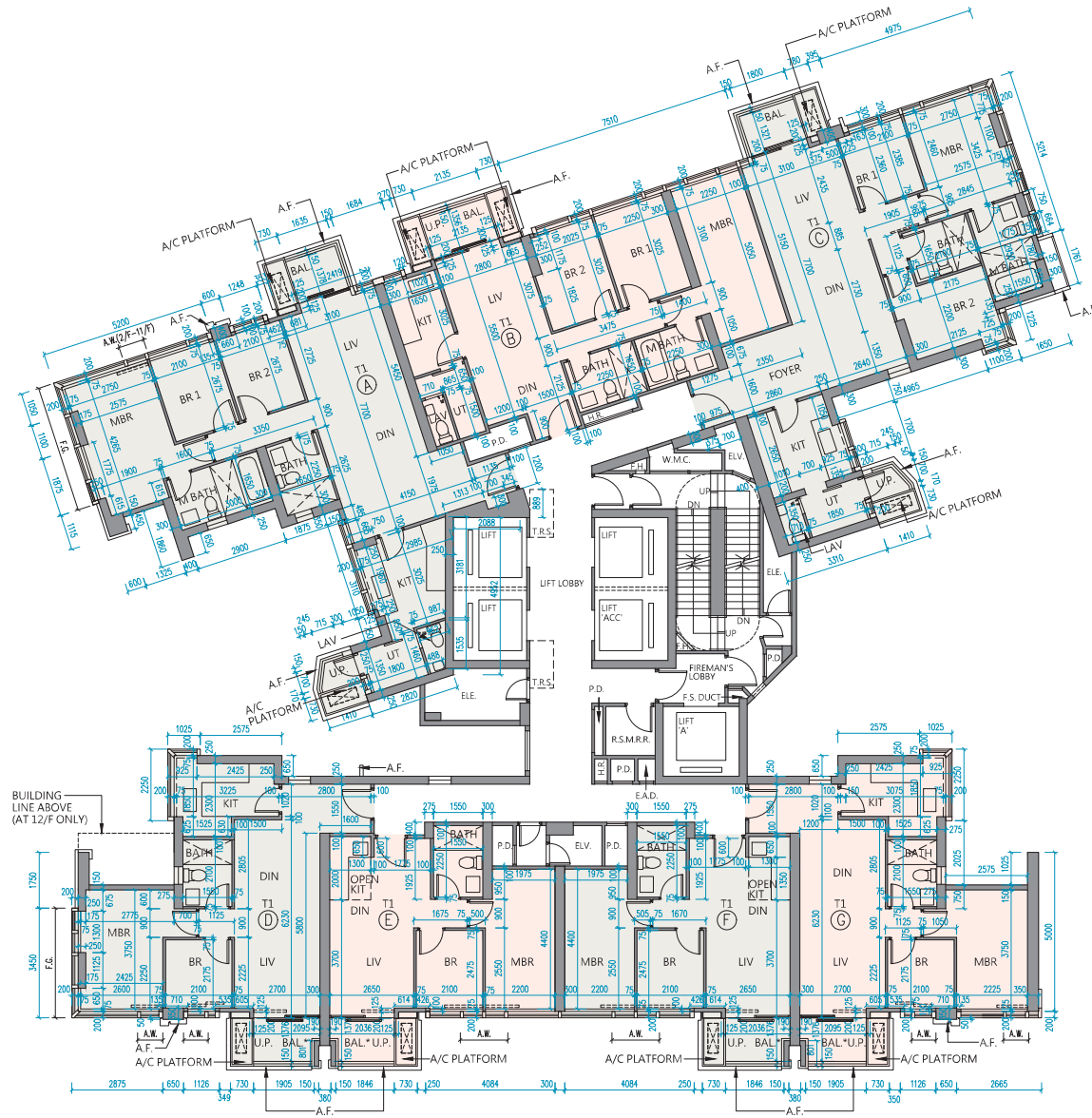
因住宅物業的較高樓層的結構牆的厚度遞減，較高樓層的內部面積，一般比較低樓層的內部面積稍大。部份單位之天花高度將會因應結構、建築及/或裝修設計上的需要而有差異。

#### 備註：

1. 樓面平面圖所列之尺寸為以毫米標示之建築結構尺寸，並以四捨五入至整數。
2. 有關噪音緩解措施之詳情，請參閱本售樓說明書的有關資料章節。
3. 樓面平面圖中顯示之名詞及簡稱之圖例請參閱本售樓說明書第32頁至第33頁。
4. 期數的住宅樓層由1樓至28樓。每座不設4樓、13樓、14樓及24樓。

# 11 FLOOR PLANS OF RESIDENTIAL PROPERTIES IN THE PHASE 期數的住宅物業的樓面平面圖

Tower 1 | 2/F-3/F, 5/F-12/F  
第1座 | 2樓至3樓、5樓至12樓



Scale: 0 5M/米  
比例:

# 11 FLOOR PLANS OF RESIDENTIAL PROPERTIES IN THE PHASE 期數的住宅物業的樓面平面圖

## Tower 1 | 2/F-3/F, 5/F-12/F

### 第1座 | 2樓至3樓、5樓至12樓

Description 描述		The floor-to-floor height (refers to the height between the top surface of the structural slab of a floor and the top surface of the structural slab of its immediate upper floor) of each residential property (mm) 每個住宅物業的層與層之間的高度 (指該樓層之石屎地台面與上一層石屎地台面之高度距離) (毫米)							The thickness of the floor slabs (excluding plaster) of each residential property (mm) 每個住宅物業的樓板 (不包括灰泥) 的厚度 (毫米)							
Tower 座數	Floor 樓層	Unit 單位	A	B	C	D	E	F	G	A	B	C	D	E	F	G
Tower 1 第1座	2/F-3/F, 5/F-12/F 2樓至3樓、5樓至12樓		3300	3300	3300	3300	3300	3300	3300	150, 175	150, 175	150, 175	150	150	150	150

The internal areas of the residential properties on the upper floors will generally be slightly larger than those on the lower floors because of the reducing thickness of the structural walls on the upper floors.

The internal ceiling height within part of the residential properties may vary due to structural, architectural and/or decoration design variations.

#### Notes:

1. The dimensions in the floor plans are all structural dimensions in millimetre and rounded off to the nearest integer.
2. For details of the noise mitigation measures, please refer to the Relevant Information section in this sales brochure.
3. Please refer to page 32 to page 33 of this sales brochure for legend of the terms and abbreviations shown in the floor plan.
4. Residential floors of the Phase are from 1/F to 28/F. There are no 4/F, 13/F, 14/F, 24/F in each Tower.

因住宅物業的較高樓層的結構牆的厚度遞減，較高樓層的內部面積，一般比較低樓層的內部面積稍大。部份單位之天花高度將會因應結構、建築及/或裝修設計上的需要而有差異。

#### 備註：

1. 樓面平面圖所列之尺寸為以毫米標示之建築結構尺寸，並以四捨五入至整數。
2. 有關噪音緩解措施之詳情，請參閱本售樓說明書的有關資料章節。
3. 樓面平面圖中顯示之名詞及簡稱之圖例請參閱本售樓說明書第32頁至第33頁。
4. 期數的住宅樓層由1樓至28樓。每座不設4樓、13樓、14樓及24樓。

# 11 FLOOR PLANS OF RESIDENTIAL PROPERTIES IN THE PHASE 期數的住宅物業的樓面平面圖

Tower 1 | 15/F  
第1座 | 15樓



Scale: 0 5M/米  
比例:

# 11 FLOOR PLANS OF RESIDENTIAL PROPERTIES IN THE PHASE 期數的住宅物業的樓面平面圖

## Tower 1 | 15/F

### 第1座 | 15樓

Description 描述		The floor-to-floor height (refers to the height between the top surface of the structural slab of a floor and the top surface of the structural slab of its immediate upper floor) of each residential property (mm) 每個住宅物業的層與層之間的高度（指該樓層之石屎地台面與上一層石屎地台面之高度距離）（毫米）							The thickness of the floor slabs (excluding plaster) of each residential property (mm) 每個住宅物業的樓板（不包括灰泥）的厚度（毫米）							
Tower 座數	Floor 樓層	Unit 單位	A	B	C	D	E	F	G	A	B	C	D	E	F	G
Tower 1 第1座	15/F 15樓		2950, 3025, 3100, 3225, 3300, 3575	2950, 3300, 3375, 3500, 3650, 3675	2900, 2925, 2950, 3025, 3100, 3225, 3300, 3375, 3500, 3650	2950, 3025, 3225, 3300, 3375, 3650	2950, 3300, 3375, 3500, 3650	3225, 3300, 3375, 3500, 3650	2950, 3100, 3225, 3300, 3375, 3500, 3575, 3650	150, 175	150, 175	150, 175	150, 250	150, 300	150, 300	150

The internal areas of the residential properties on the upper floors will generally be slightly larger than those on the lower floors because of the reducing thickness of the structural walls on the upper floors.

The internal ceiling height within part of the residential properties may vary due to structural, architectural and/or decoration design variations.

#### Notes:

- The dimensions in the floor plans are all structural dimensions in millimetre and rounded off to the nearest integer.
- For details of the noise mitigation measures, please refer to the Relevant Information section in this sales brochure.
- Please refer to page 32 to page 33 of this sales brochure for legend of the terms and abbreviations shown in the floor plan.
- Residential floors of the Phase are from 1/F to 28/F. There are no 4/F, 13/F, 14/F, 24/F in each Tower.

因住宅物業的較高樓層的結構牆的厚度遞減，較高樓層的內部面積，一般比較低樓層的內部面積稍大。部份單位之天花高度將會因應結構、建築及/或裝修設計上的需要而有差異。

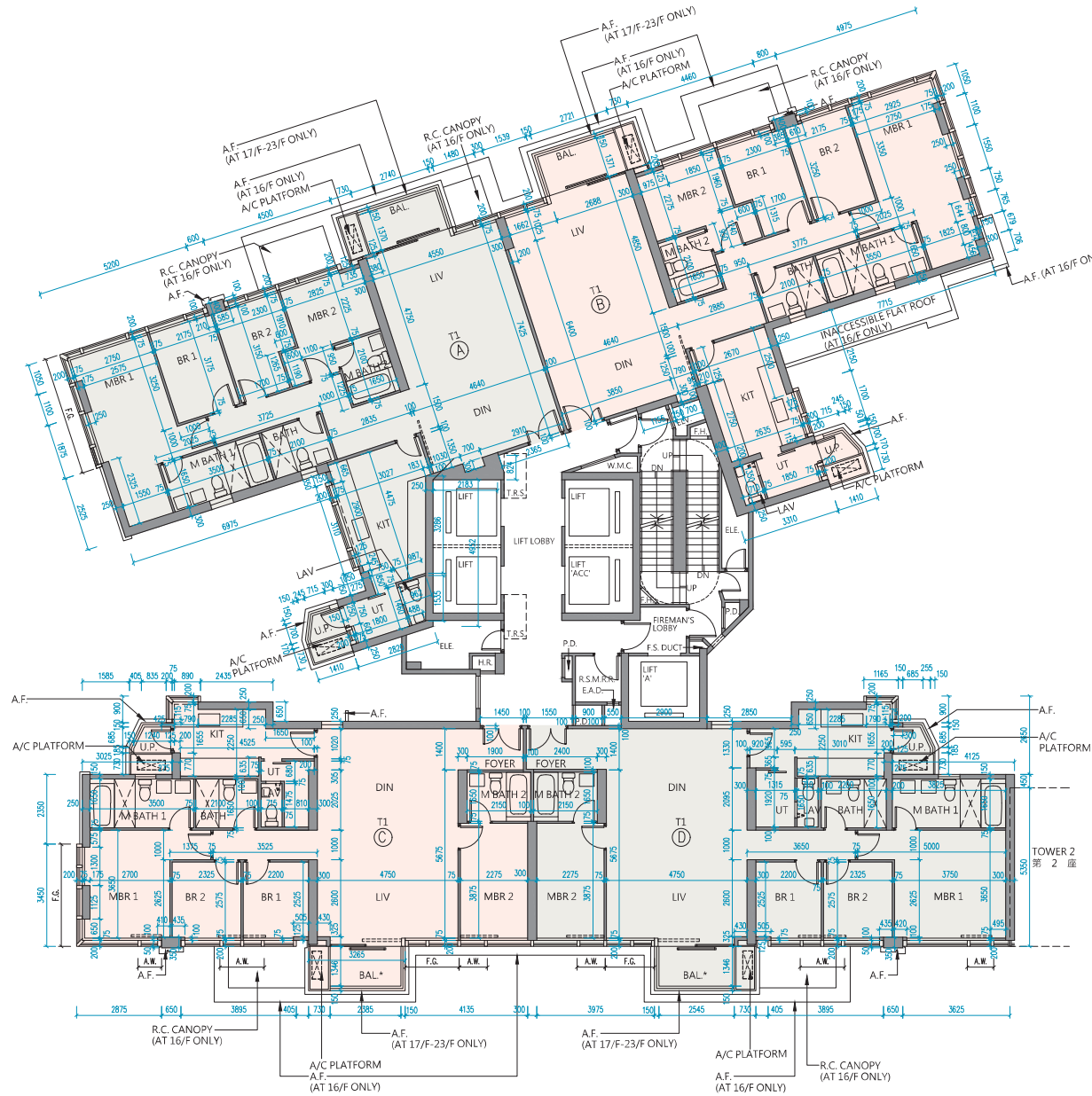
#### 備註：

- 樓面平面圖所列之尺寸為以毫米標示之建築結構尺寸，並以四捨五入至整數。
- 有關噪音緩解措施之詳情，請參閱本售樓說明書的有關資料章節。
- 樓面平面圖中顯示之名詞及簡稱之圖例請參閱本售樓說明書第32頁至第33頁。
- 期數的住宅樓層由1樓至28樓。每座不設4樓、13樓、14樓及24樓。



# 11 FLOOR PLANS OF RESIDENTIAL PROPERTIES IN THE PHASE 期數的住宅物業的樓面平面圖

Tower 1 | 16/F-23/F  
第1座 | 16樓至23樓



Scale: 0 5M/米  
比例:

# 11 FLOOR PLANS OF RESIDENTIAL PROPERTIES IN THE PHASE 期數的住宅物業的樓面平面圖

## Tower 1 | 16/F-23/F

### 第1座 | 16樓至23樓

Description 描述		The floor-to-floor height (refers to the height between the top surface of the structural slab of a floor and the top surface of the structural slab of its immediate upper floor) of each residential property (mm) 每個住宅物業的層與層之間的高度 (指該樓層之石屎地台面與上一層石屎地台面之高度距離) (毫米)				The thickness of the floor slabs (excluding plaster) of each residential property (mm) 每個住宅物業的樓板 (不包括灰泥) 的厚度 (毫米)				
Tower 座數	Floor 樓層	Unit 單位	A	B	C	D	A	B	C	D
Tower 1 第1座	16/F 16樓		2900, 2950, 3300, 3500, 3650	2900, 2925, 2950, 3275, 3300, 3650, 3700	2950, 3300, 3650	2950, 3300, 3650	150, 200	150, 200	150, 175, 200, 250	150, 175, 200, 250
	17/F-23/F 17樓至23樓		3300	3300	3300	3300	150, 200	150, 200	150, 175, 200, 250	150, 175, 200, 250

The internal areas of the residential properties on the upper floors will generally be slightly larger than those on the lower floors because of the reducing thickness of the structural walls on the upper floors.

The internal ceiling height within part of the residential properties may vary due to structural, architectural and/or decoration design variations.

#### Notes:

1. The dimensions in the floor plans are all structural dimensions in millimetre and rounded off to the nearest integer.
2. For details of the noise mitigation measures, please refer to the Relevant Information section in this sales brochure.
3. Please refer to page 32 to page 33 of this sales brochure for legend of the terms and abbreviations shown in the floor plan.
4. Residential floors of the Phase are from 1/F to 28/F. There are no 4/F, 13/F, 14/F, 24/F in each Tower.

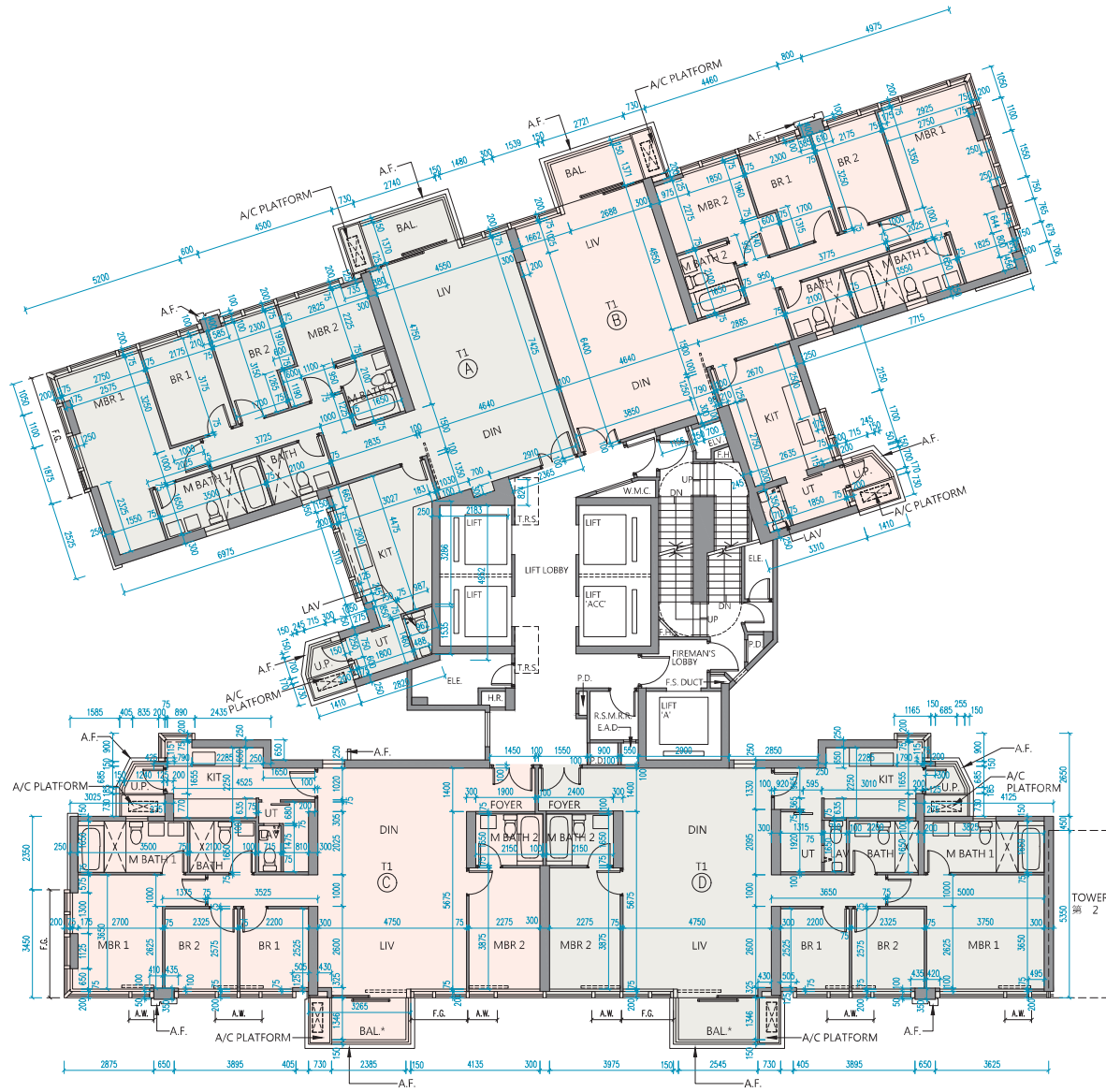
因住宅物業的較高樓層的結構牆的厚度遞減，較高樓層的內部面積，一般比較低樓層的內部面積稍大。部份單位之天花高度將會因應結構、建築及/或裝修設計上的需要而有差異。

#### 備註：

1. 樓面平面圖所列之尺寸為以毫米標示之建築結構尺寸，並以四捨五入至整數。
2. 有關噪音緩解措施之詳情，請參閱本售樓說明書的有關資料章節。
3. 樓面平面圖中顯示之名詞及簡稱之圖例請參閱本售樓說明書第32頁至第33頁。
4. 期數的住宅樓層由1樓至28樓。每座不設4樓、13樓、14樓及24樓。

# 11 FLOOR PLANS OF RESIDENTIAL PROPERTIES IN THE PHASE 期數的住宅物業的樓面平面圖

Tower 1 | 25/F  
第1座 | 25樓



Scale: 0 5M/米  
比例:

# 11 FLOOR PLANS OF RESIDENTIAL PROPERTIES IN THE PHASE 期數的住宅物業的樓面平面圖

## Tower 1 | 25/F

### 第1座 | 25樓

Description 描述		The floor-to-floor height (refers to the height between the top surface of the structural slab of a floor and the top surface of the structural slab of its immediate upper floor) of each residential property (mm) 每個住宅物業的層與層之間的高度（指該樓層之石屎地台面與上一層石屎地台面之高度距離）（毫米）				The thickness of the floor slabs (excluding plaster) of each residential property (mm) 每個住宅物業的樓板（不包括灰泥）的厚度（毫米）				
Tower 座數	Floor 樓層	Unit 單位	A	B	C	D	A	B	C	D
Tower 1 第1座	25/F 25樓		3300	3300	3300	3300	150, 200	150, 200	150, 175, 200, 250	150, 175, 200, 250

The internal areas of the residential properties on the upper floors will generally be slightly larger than those on the lower floors because of the reducing thickness of the structural walls on the upper floors.

The internal ceiling height within part of the residential properties may vary due to structural, architectural and/or decoration design variations.

#### Notes:

1. The dimensions in the floor plans are all structural dimensions in millimetre and rounded off to the nearest integer.
2. For details of the noise mitigation measures, please refer to the Relevant Information section in this sales brochure.
3. Please refer to page 32 to page 33 of this sales brochure for legend of the terms and abbreviations shown in the floor plan.
4. Residential floors of the Phase are from 1/F to 28/F. There are no 4/F, 13/F, 14/F, 24/F in each Tower.

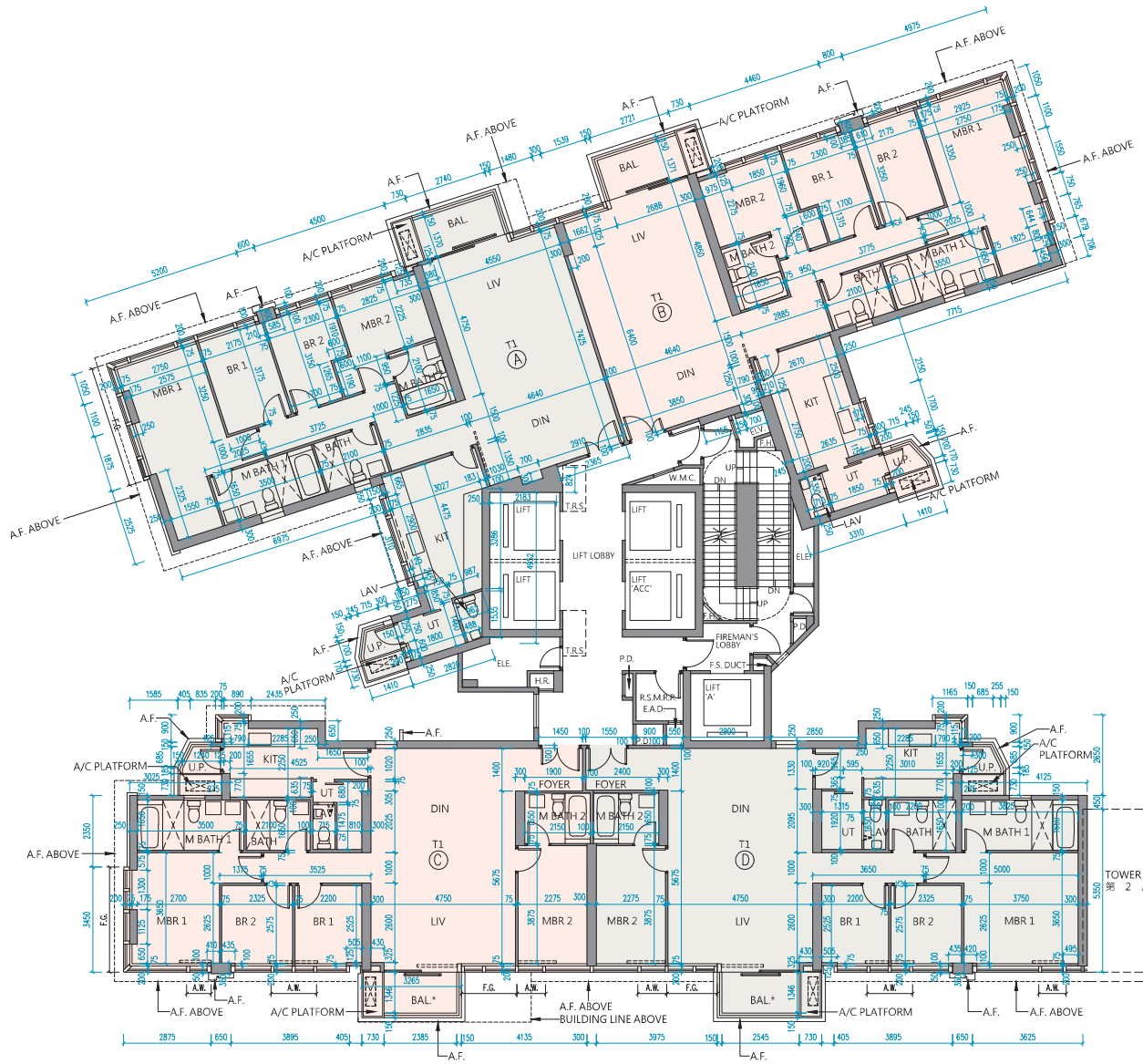
因住宅物業的較高樓層的結構牆的厚度遞減，較高樓層的內部面積，一般比較低樓層的內部面積稍大。部份單位之天花高度將會因應結構、建築及/或裝修設計上的需要而有差異。

#### 備註：

1. 樓面平面圖所列之尺寸為以毫米標示之建築結構尺寸，並以四捨五入至整數。
2. 有關噪音緩解措施之詳情，請參閱本售樓說明書的有關資料章節。
3. 樓面平面圖中顯示之名詞及簡稱之圖例請參閱本售樓說明書第32頁至第33頁。
4. 期數的住宅樓層由1樓至28樓。每座不設4樓、13樓、14樓及24樓。

# 11 FLOOR PLANS OF RESIDENTIAL PROPERTIES IN THE PHASE 期數的住宅物業的樓面平面圖

Tower 1 | 26/F  
第1座 | 26樓



Scale: 0 5M/米  
比例:

# 11 FLOOR PLANS OF RESIDENTIAL PROPERTIES IN THE PHASE 期數的住宅物業的樓面平面圖

## Tower 1 | 26/F

### 第1座 | 26樓

Description 描述		The floor-to-floor height (refers to the height between the top surface of the structural slab of a floor and the top surface of the structural slab of its immediate upper floor) of each residential property (mm) 每個住宅物業的層與層之間的高度 (指該樓層之石屎地台面與上一層石屎地台面之高度距離) (毫米)				The thickness of the floor slabs (excluding plaster) of each residential property (mm) 每個住宅物業的樓板 (不包括灰泥) 的厚度 (毫米)				
Tower 座數	Floor 樓層	Unit 單位	A	B	C	D	A	B	C	D
Tower 1 第1座	26/F 26樓		3150, 3175, 3300, 3500, 3575, 3850	3050, 3100, 3150, 3350, 3425, 3500, 3575, 3850	3150, 3175, 3500, 3575, 3650, 3850	3150, 3500, 3575, 3700, 3850	150, 200	150, 200, 250	150, 175, 200	150, 175, 200, 250

The internal areas of the residential properties on the upper floors will generally be slightly larger than those on the lower floors because of the reducing thickness of the structural walls on the upper floors.

The internal ceiling height within part of the residential properties may vary due to structural, architectural and/or decoration design variations.

#### Notes:

1. The dimensions in the floor plans are all structural dimensions in millimetre and rounded off to the nearest integer.
2. For details of the noise mitigation measures, please refer to the Relevant Information section in this sales brochure.
3. Please refer to page 32 to page 33 of this sales brochure for legend of the terms and abbreviations shown in the floor plan.
4. Residential floors of the Phase are from 1/F to 28/F. There are no 4/F, 13/F, 14/F, 24/F in each Tower.

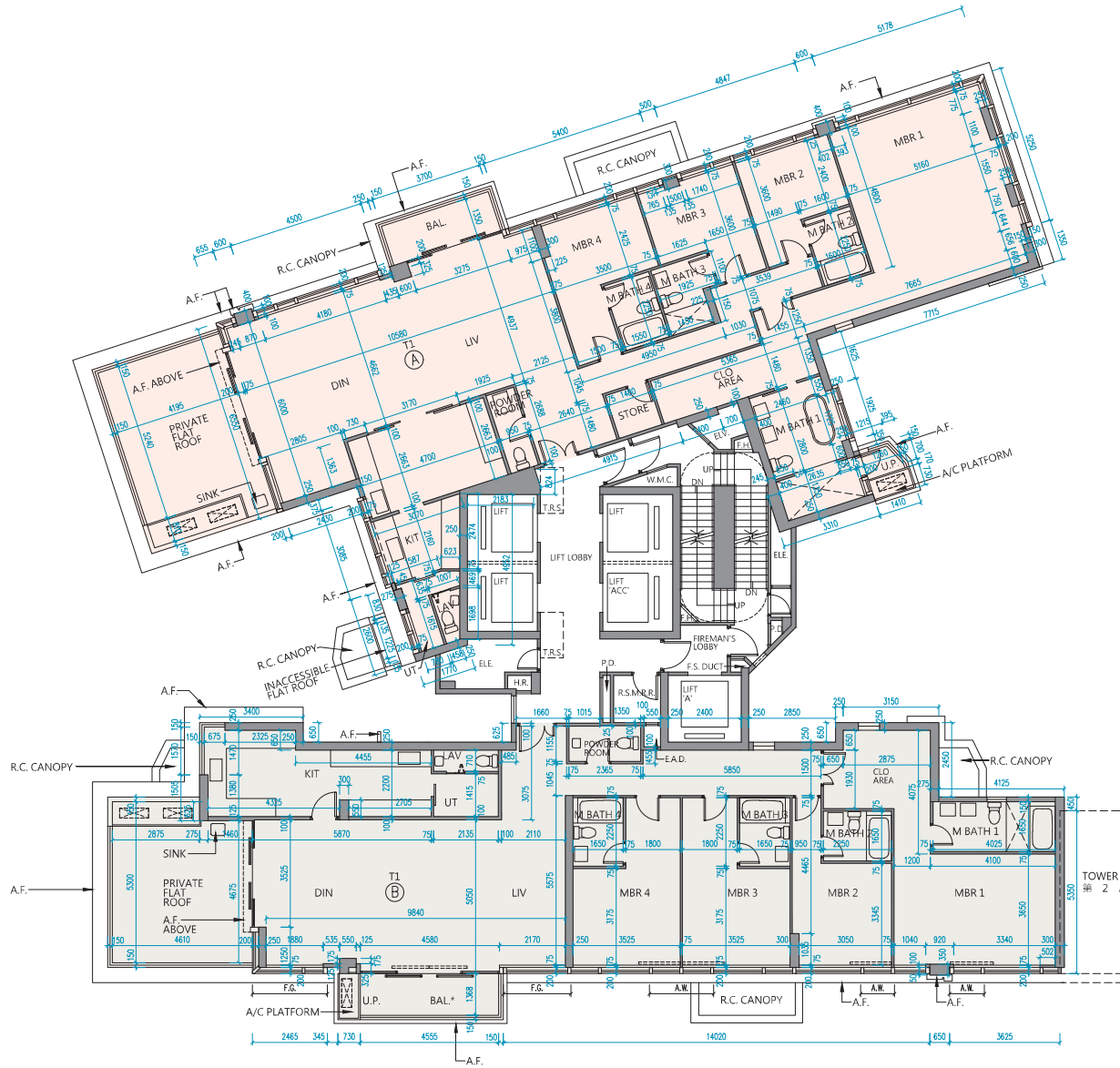
因住宅物業的較高樓層的結構牆的厚度遞減，較高樓層的內部面積，一般比較低樓層的內部面積稍大。部份單位之天花高度將會因應結構、建築及/或裝修設計上的需要而有差異。

#### 備註：

1. 樓面平面圖所列之尺寸為以毫米標示之建築結構尺寸，並以四捨五入至整數。
2. 有關噪音緩解措施之詳情，請參閱本售樓說明書的有關資料章節。
3. 樓面平面圖中顯示之名詞及簡稱之圖例請參閱本售樓說明書第32頁至第33頁。
4. 期數的住宅樓層由1樓至28樓。每座不設4樓、13樓、14樓及24樓。

# 11 FLOOR PLANS OF RESIDENTIAL PROPERTIES IN THE PHASE 期數的住宅物業的樓面平面圖

Tower 1 | 27/F  
第1座 | 27樓



Scale: 0 5M/米  
比例:

# 11 FLOOR PLANS OF RESIDENTIAL PROPERTIES IN THE PHASE 期數的住宅物業的樓面平面圖

## Tower 1 | 27/F

### 第1座 | 27樓

Description 描述		The floor-to-floor height (refers to the height between the top surface of the structural slab of a floor and the top surface of the structural slab of its immediate upper floor) of each residential property (mm) 每個住宅物業的層與層之間的高度（指該樓層之石屎地台面與上一層石屎地台面之高度距離）（毫米）		The thickness of the floor slabs (excluding plaster) of each residential property (mm) 每個住宅物業的樓板（不包括灰泥）的厚度（毫米）	
Tower 座數	Floor 樓層	A	B	A	B
Tower 1 第1座	27/F 27樓	3150, 3300, 3350, 3500, 3550, 3700, 3775, 3850, 3900	3100, 3150, 3450, 3500, 3850	150, 250, 275	150, 200, 250, 275

The internal areas of the residential properties on the upper floors will generally be slightly larger than those on the lower floors because of the reducing thickness of the structural walls on the upper floors.

The internal ceiling height within part of the residential properties may vary due to structural, architectural and/or decoration design variations.

#### Notes:

1. The dimensions in the floor plans are all structural dimensions in millimetre and rounded off to the nearest integer.
2. For details of the noise mitigation measures, please refer to the Relevant Information section in this sales brochure.
3. Please refer to page 32 to page 33 of this sales brochure for legend of the terms and abbreviations shown in the floor plan.
4. Residential floors of the Phase are from 1/F to 28/F. There are no 4/F, 13/F, 14/F, 24/F in each Tower.

因住宅物業的較高樓層的結構牆的厚度遞減，較高樓層的內部面積，一般比較低樓層的內部面積稍大。部份單位之天花高度將會因應結構、建築及/或裝修設計上的需要而有差異。

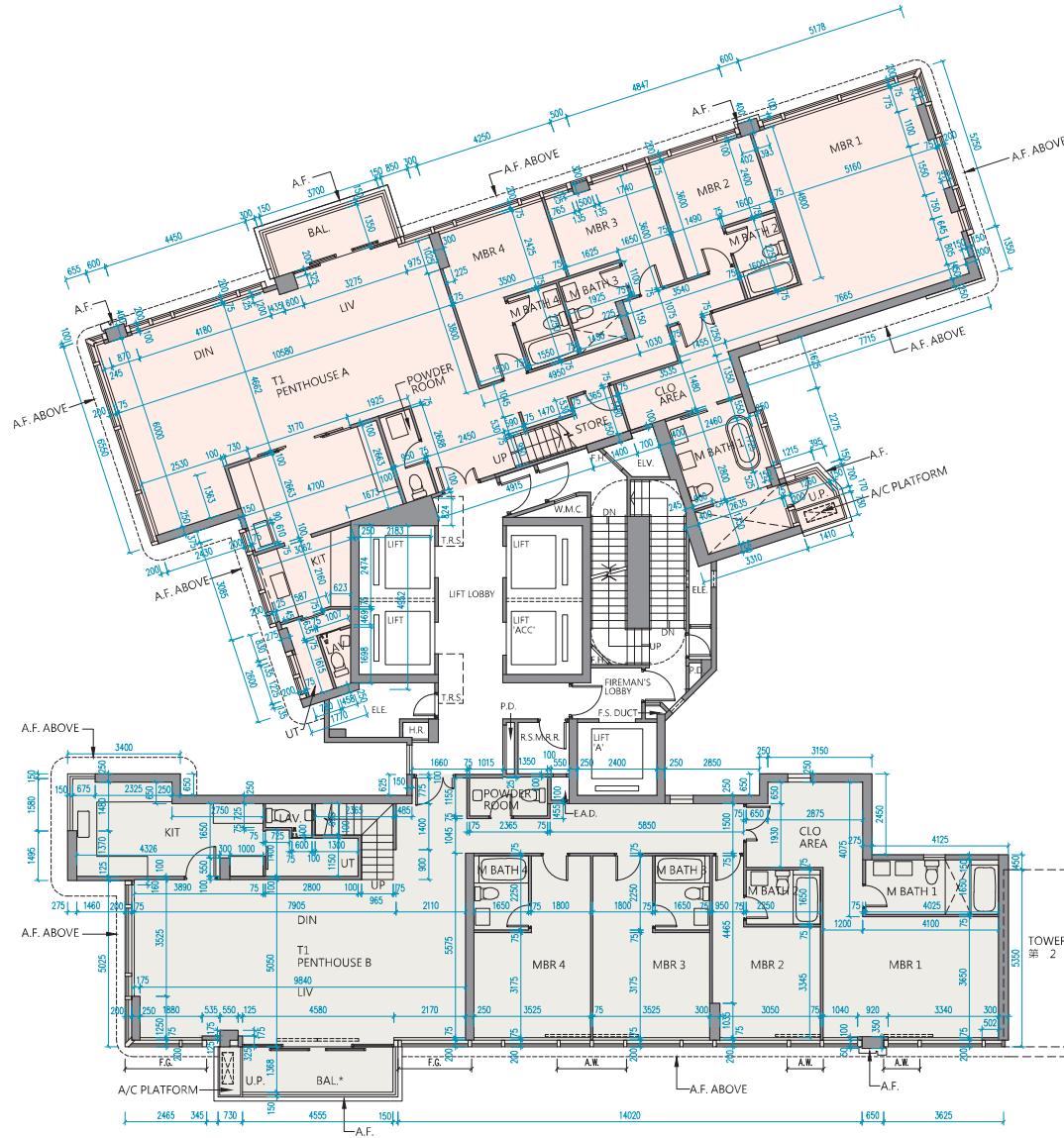
#### 備註：

1. 樓面平面圖所列之尺寸為以毫米標示之建築結構尺寸，並以四捨五入至整數。
2. 有關噪音緩解措施之詳情，請參閱本售樓說明書的有關資料章節。
3. 樓面平面圖中顯示之名詞及簡稱之圖例請參閱本售樓說明書第32頁至第33頁。
4. 期數的住宅樓層由1樓至28樓。每座不設4樓、13樓、14樓及24樓。



# 11 FLOOR PLANS OF RESIDENTIAL PROPERTIES IN THE PHASE 期數的住宅物業的樓面平面圖

Tower 1 | 28/F  
第1座 | 28樓



# 11 FLOOR PLANS OF RESIDENTIAL PROPERTIES IN THE PHASE 期數的住宅物業的樓面平面圖

## Tower 1 | 28/F

### 第1座 | 28樓

Description 描述		The floor-to-floor height (refers to the height between the top surface of the structural slab of a floor and the top surface of the structural slab of its immediate upper floor) of each residential property (mm) 每個住宅物業的層與層之間的高度 (指該樓層之石屎地台面與上一層石屎地台面之高度距離) (毫米)		The thickness of the floor slabs (excluding plaster) of each residential property (mm) 每個住宅物業的樓板 (不包括灰泥) 的厚度 (毫米)		
Tower 座數	Floor 樓層	Unit 單位	A	B	A	B
Tower 1 第1座	28/F 28樓		3500, 3700, 3850, 3925, 4050, 4200, 4300	3500, 3575, 3700, 3850, 3900, 4200, 4250	150, 200, 250, 275	150, 200, 225, 275

The internal areas of the residential properties on the upper floors will generally be slightly larger than those on the lower floors because of the reducing thickness of the structural walls on the upper floors.

The internal ceiling height within part of the residential properties may vary due to structural, architectural and/or decoration design variations.

#### Notes:

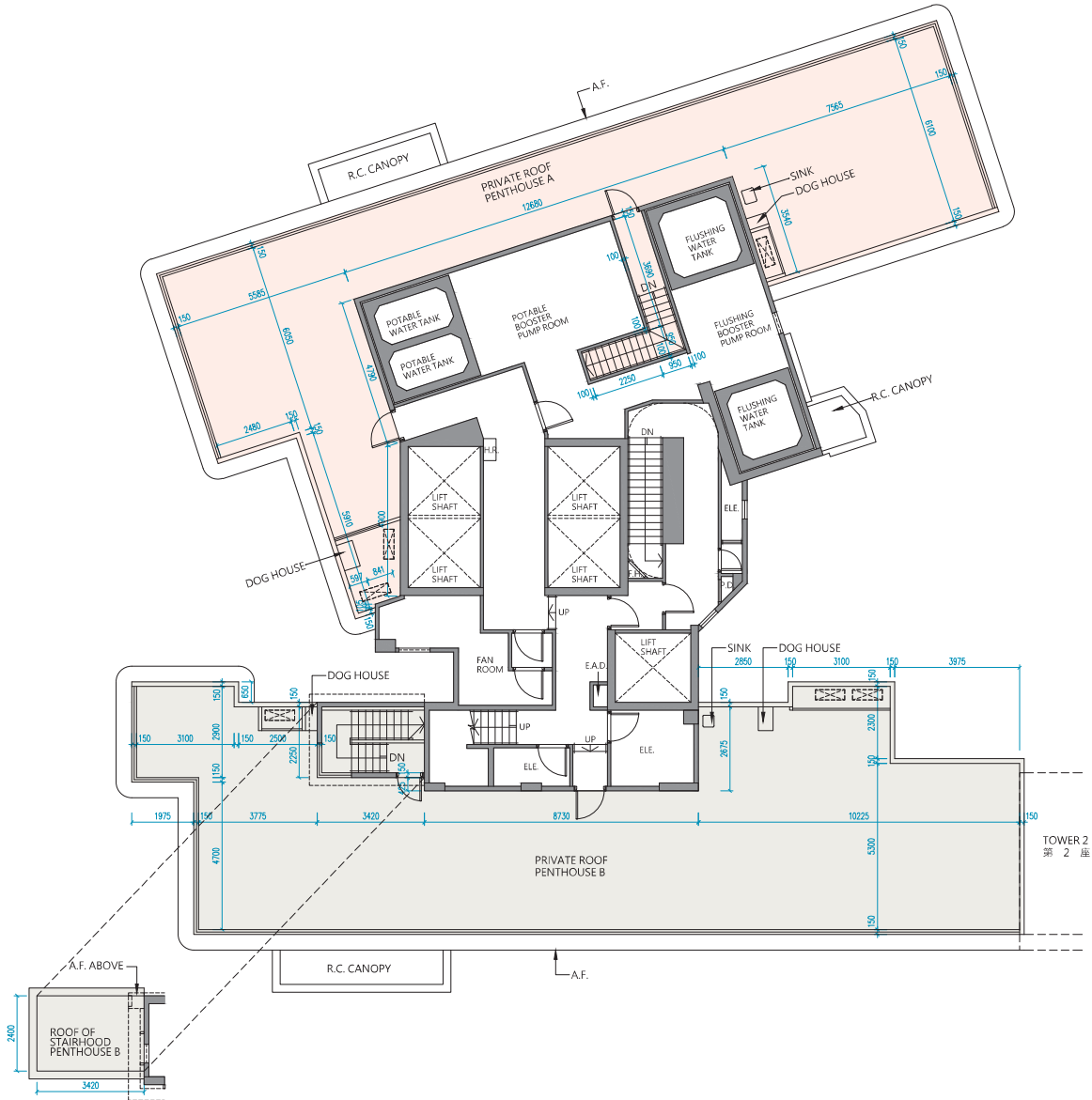
1. The dimensions in the floor plans are all structural dimensions in millimetre and rounded off to the nearest integer.
2. For details of the noise mitigation measures, please refer to the Relevant Information section in this sales brochure.
3. Please refer to page 32 to page 33 of this sales brochure for legend of the terms and abbreviations shown in the floor plan.
4. Residential floors of the Phase are from 1/F to 28/F. There are no 4/F, 13/F, 14/F, 24/F in each Tower.

因住宅物業的較高樓層的結構牆的厚度遞減，較高樓層的內部面積，一般比較低樓層的內部面積稍大。部份單位之天花高度將會因應結構、建築及/或裝修設計上的需要而有差異。

#### 備註：

1. 樓面平面圖所列之尺寸為以毫米標示之建築結構尺寸，並以四捨五入至整數。
2. 有關噪音緩解措施之詳情，請參閱本售樓說明書的有關資料章節。
3. 樓面平面圖中顯示之名詞及簡稱之圖例請參閱本售樓說明書第32頁至第33頁。
4. 期數的住宅樓層由1樓至28樓。每座不設4樓、13樓、14樓及24樓。

### Tower 1 | Roof 第1座 | 天台



Scale: 0 5M/米  
比例:

# 11 FLOOR PLANS OF RESIDENTIAL PROPERTIES IN THE PHASE 期數的住宅物業的樓面平面圖

## Tower 1 | Roof

### 第1座 | 天台

Description 描述		The floor-to-floor height (refers to the height between the top surface of the structural slab of a floor and the top surface of the structural slab of its immediate upper floor) of each residential property (mm) 每個住宅物業的層與層之間的高度（指該樓層之石屎地台面與上一層石屎地台面之高度距離）（毫米）		The thickness of the floor slabs (excluding plaster) of each residential property (mm) 每個住宅物業的樓板（不包括灰泥）的厚度（毫米）	
Tower 座數	Floor 樓層	A	B	A	B
Tower 1 第1座	Roof 天台	Not applicable 不適用		Not applicable 不適用	

The internal areas of the residential properties on the upper floors will generally be slightly larger than those on the lower floors because of the reducing thickness of the structural walls on the upper floors.

The internal ceiling height within part of the residential properties may vary due to structural, architectural and/or decoration design variations.

#### Notes:

1. The dimensions in the floor plans are all structural dimensions in millimetre and rounded off to the nearest integer.
2. For details of the noise mitigation measures, please refer to the Relevant Information section in this sales brochure.
3. Please refer to page 32 to page 33 of this sales brochure for legend of the terms and abbreviations shown in the floor plan.
4. Residential floors of the Phase are from 1/F to 28/F. There are no 4/F, 13/F, 14/F, 24/F in each Tower.

因住宅物業的較高樓層的結構牆的厚度遞減，較高樓層的內部面積，一般比較低樓層的內部面積稍大。部份單位之天花高度將會因應結構、建築及/或裝修設計上的需要而有差異。

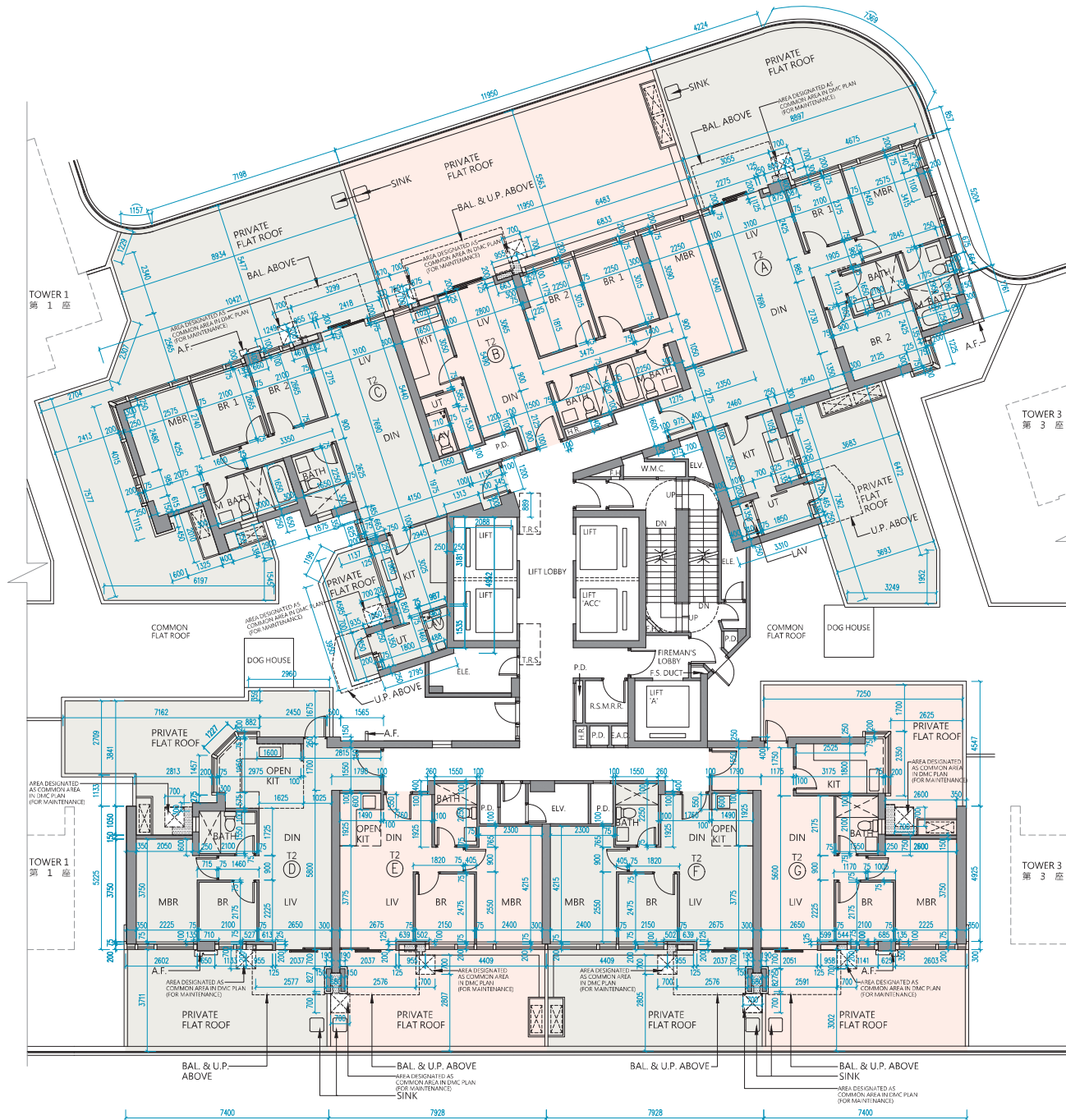
#### 備註：

1. 樓面平面圖所列之尺寸為以毫米標示之建築結構尺寸，並以四捨五入至整數。
2. 有關噪音緩解措施之詳情，請參閱本售樓說明書的有關資料章節。
3. 樓面平面圖中顯示之名詞及簡稱之圖例請參閱本售樓說明書第32頁至第33頁。
4. 期數的住宅樓層由1樓至28樓。每座不設4樓、13樓、14樓及24樓。

# 11

## FLOOR PLANS OF RESIDENTIAL PROPERTIES IN THE PHASE 期數的住宅物業的樓面平面圖

Tower 2 | 1/F  
第2座 | 1樓



Scale: 0 5M/米  
比例: 5M/米

# 11 FLOOR PLANS OF RESIDENTIAL PROPERTIES IN THE PHASE 期數的住宅物業的樓面平面圖

## Tower 2 | 1/F 第2座 | 1樓

Description 描述		The floor-to-floor height (refers to the height between the top surface of the structural slab of a floor and the top surface of the structural slab of its immediate upper floor) of each residential property (mm) 每個住宅物業的層與層之間的高度 (指該樓層之石屎地台面與上一層石屎地台面之高度距離) (毫米)							The thickness of the floor slabs (excluding plaster) of each residential property (mm) 每個住宅物業的樓板 (不包括灰泥) 的厚度 (毫米)							
Tower 座數	Floor 樓層	Unit 單位	A	B	C	D	E	F	G	A	B	C	D	E	F	G
Tower 2 第2座	1/F 1樓		3300, 3450, 3475, 3575, 3650	3275, 3300, 3450, 3475, 3575, 3650	3300, 3450, 3475, 3575, 3650	3300, 3475, 3575, 3650	3300, 3450, 3475, 3575, 3650	3300, 3450, 3475, 3575, 3650	3300, 3450, 3475, 3575, 3650	150, 175	150, 175	150, 175	150, 175	150	150	150, 175

The internal areas of the residential properties on the upper floors will generally be slightly larger than those on the lower floors because of the reducing thickness of the structural walls on the upper floors.

The internal ceiling height within part of the residential properties may vary due to structural, architectural and/or decoration design variations.

### Notes:

- The dimensions in the floor plans are all structural dimensions in millimetre and rounded off to the nearest integer.
- For details of the noise mitigation measures, please refer to the Relevant Information section in this sales brochure.
- Please refer to page 32 to page 33 of this sales brochure for legend of the terms and abbreviations shown in the floor plan.
- Residential floors of the Phase are from 1/F to 28/F. There are no 4/F, 13/F, 14/F, 24/F in each Tower.

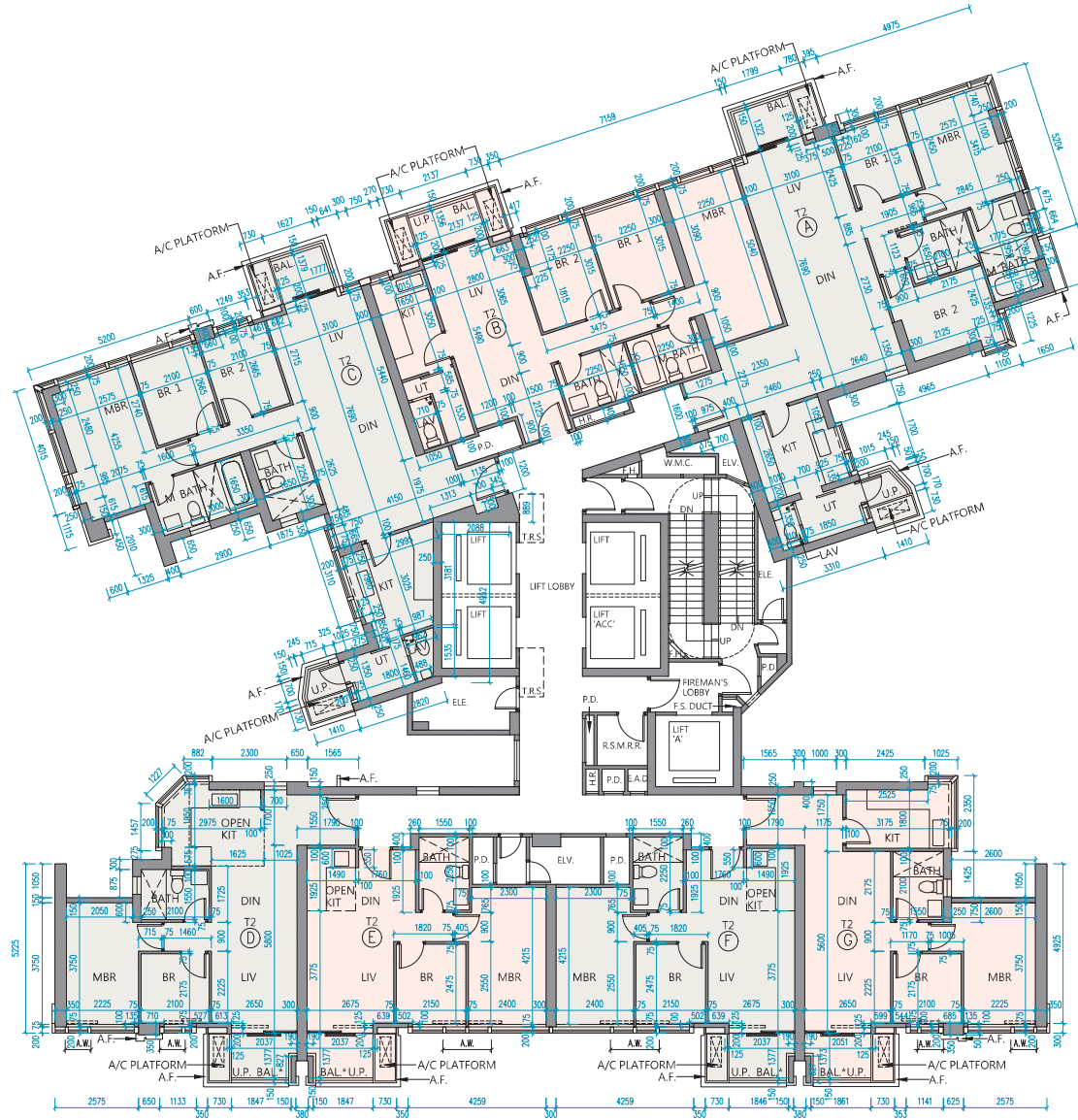
因住宅物業的較高樓層的結構牆的厚度遞減，較高樓層的內部面積，一般比較低樓層的內部面積稍大。部份單位之天花高度將會因應結構、建築及/或裝修設計上的需要而有差異。

### 備註：

- 樓面平面圖所列之尺寸為以毫米標示之建築結構尺寸，並以四捨五入至整數。
- 有關噪音緩解措施之詳情，請參閱本售樓說明書的有關資料章節。
- 樓面平面圖中顯示之名詞及簡稱之圖例請參閱本售樓說明書第32頁至第33頁。
- 期數的住宅樓層由1樓至28樓。每座不設4樓、13樓、14樓及24樓。

# 11 FLOOR PLANS OF RESIDENTIAL PROPERTIES IN THE PHASE 期數的住宅物業的樓面平面圖

Tower 2 | 2/F-3/F & 5/F  
第2座 | 2樓至3樓及5樓



Scale: 0 5M/米  
比例:

# 11 FLOOR PLANS OF RESIDENTIAL PROPERTIES IN THE PHASE 期數的住宅物業的樓面平面圖

## Tower 2 | 2/F-3/F & 5/F 第2座 | 2樓至3樓及5樓

Description 描述		The floor-to-floor height (refers to the height between the top surface of the structural slab of a floor and the top surface of the structural slab of its immediate upper floor) of each residential property (mm) 每個住宅物業的層與層之間的高度 (指該樓層之石屎地台面與上一層石屎地台面之高度距離) (毫米)							The thickness of the floor slabs (excluding plaster) of each residential property (mm) 每個住宅物業的樓板 (不包括灰泥) 的厚度 (毫米)							
Tower 座數	Floor 樓層	Unit 單位	A	B	C	D	E	F	G	A	B	C	D	E	F	G
Tower 2 第2座	2/F-3/F & 5/F 2樓至3樓及5樓		3300	3300	3300	3300	3300	3300	3300	150, 175	150, 175	150, 175	150, 175	150	150	150, 175

The internal areas of the residential properties on the upper floors will generally be slightly larger than those on the lower floors because of the reducing thickness of the structural walls on the upper floors.

The internal ceiling height within part of the residential properties may vary due to structural, architectural and/or decoration design variations.

### Notes:

1. The dimensions in the floor plans are all structural dimensions in millimetre and rounded off to the nearest integer.
2. For details of the noise mitigation measures, please refer to the Relevant Information section in this sales brochure.
3. Please refer to page 32 to page 33 of this sales brochure for legend of the terms and abbreviations shown in the floor plan.
4. Residential floors of the Phase are from 1/F to 28/F. There are no 4/F, 13/F, 14/F, 24/F in each Tower.

因住宅物業的較高樓層的結構牆的厚度遞減，較高樓層的內部面積，一般比較低樓層的內部面積稍大。部份單位之天花高度將會因應結構、建築及/或裝修設計上的需要而有差異。

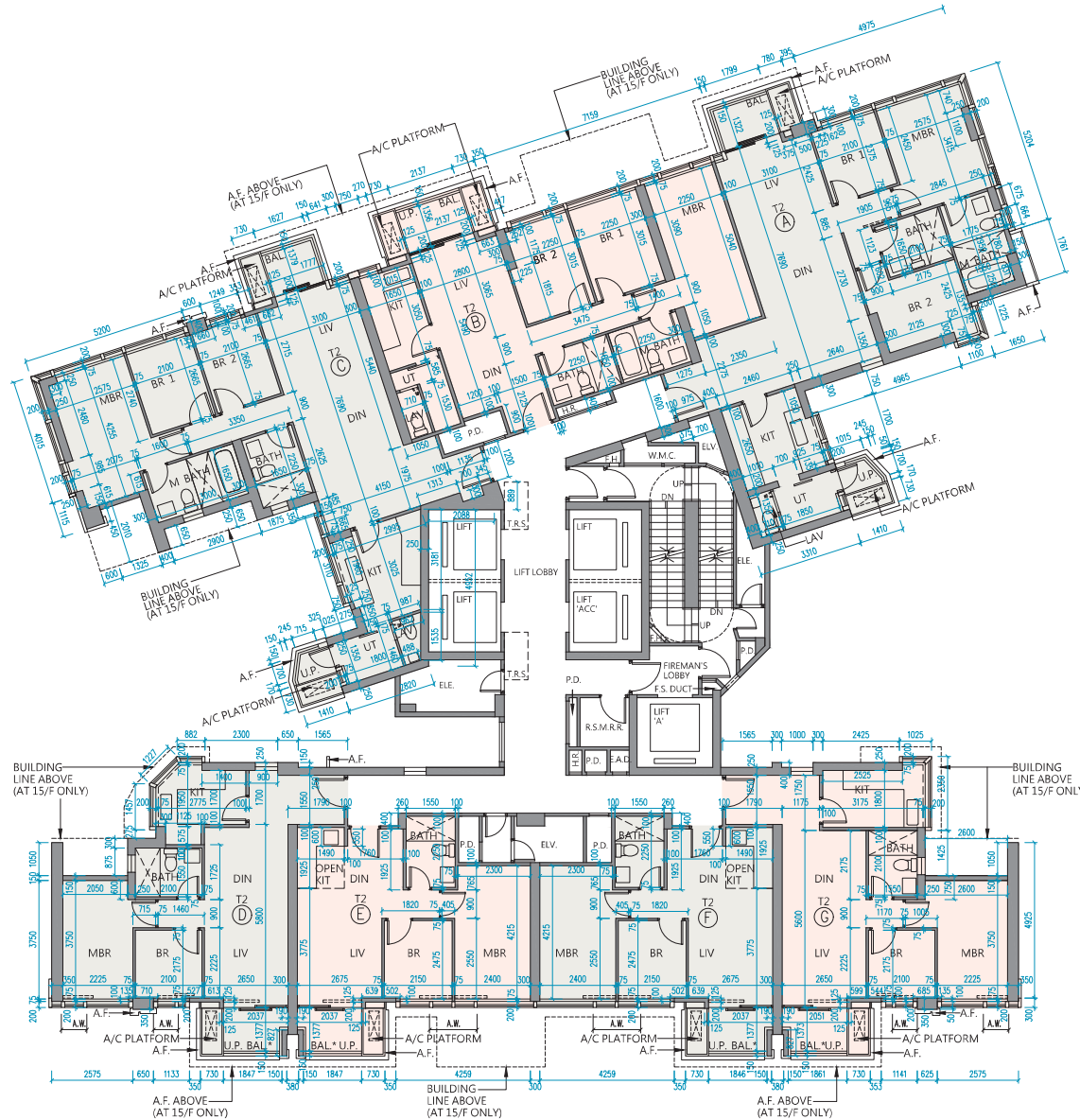
### 備註：

1. 樓面平面圖所列之尺寸為以毫米標示之建築結構尺寸，並以四捨五入至整數。
2. 有關噪音緩解措施之詳情，請參閱本售樓說明書的有關資料章節。
3. 樓面平面圖中顯示之名詞及簡稱之圖例請參閱本售樓說明書第32頁至第33頁。
4. 期數的住宅樓層由1樓至28樓。每座不設4樓、13樓、14樓及24樓。



# 11 FLOOR PLANS OF RESIDENTIAL PROPERTIES IN THE PHASE 期數的住宅物業的樓面平面圖

Tower 2 | 6/F-12/F & 15/F  
第2座 | 6樓至12樓及15樓



Scale: 0 5M/米  
比例:

# 11 FLOOR PLANS OF RESIDENTIAL PROPERTIES IN THE PHASE 期數的住宅物業的樓面平面圖

## Tower 2 | 6/F-12/F & 15/F 第2座 | 6樓至12樓及15樓

Description 描述		The floor-to-floor height (refers to the height between the top surface of the structural slab of a floor and the top surface of the structural slab of its immediate upper floor) of each residential property (mm) 每個住宅物業的層與層之間的高度 (指該樓層之石屎地台面與上一層石屎地台面之高度距離) (毫米)							The thickness of the floor slabs (excluding plaster) of each residential property (mm) 每個住宅物業的樓板 (不包括灰泥) 的厚度 (毫米)							
Tower 座數	Floor 樓層	Unit 單位	A	B	C	D	E	F	G	A	B	C	D	E	F	G
Tower 2 第2座	6/F-12/F 6樓至12樓		3300	3300	3300	3300	3300	3300	3300	150, 175	150, 175	150, 175	150, 175	150	150	150, 175
	15/F 15樓		2900, 2950, 3025, 3100, 3225, 3300, 3375, 3500, 3650, 3650	2950, 3300, 3375, 3500, 3650, 3675	2950, 3025, 3100, 3225, 3300, 3375, 3500, 3650	2950, 3225, 3300, 3375, 3575, 3650	2950, 3100, 3300, 3375, 3500, 3650	2950, 3225, 3300, 3375, 3500, 3650	2950, 3025, 3225, 3300, 3375, 3500, 3575, 3650	150, 175	150, 175	150, 175	150, 200, 275, 300	150, 300	150, 300	150, 200, 275, 300

The internal areas of the residential properties on the upper floors will generally be slightly larger than those on the lower floors because of the reducing thickness of the structural walls on the upper floors.

The internal ceiling height within part of the residential properties may vary due to structural, architectural and/or decoration design variations.

### Notes:

1. The dimensions in the floor plans are all structural dimensions in millimetre and rounded off to the nearest integer.
2. For details of the noise mitigation measures, please refer to the Relevant Information section in this sales brochure.
3. Please refer to page 32 to page 33 of this sales brochure for legend of the terms and abbreviations shown in the floor plan.
4. Residential floors of the Phase are from 1/F to 28/F. There are no 4/F, 13/F, 14/F, 24/F in each Tower.

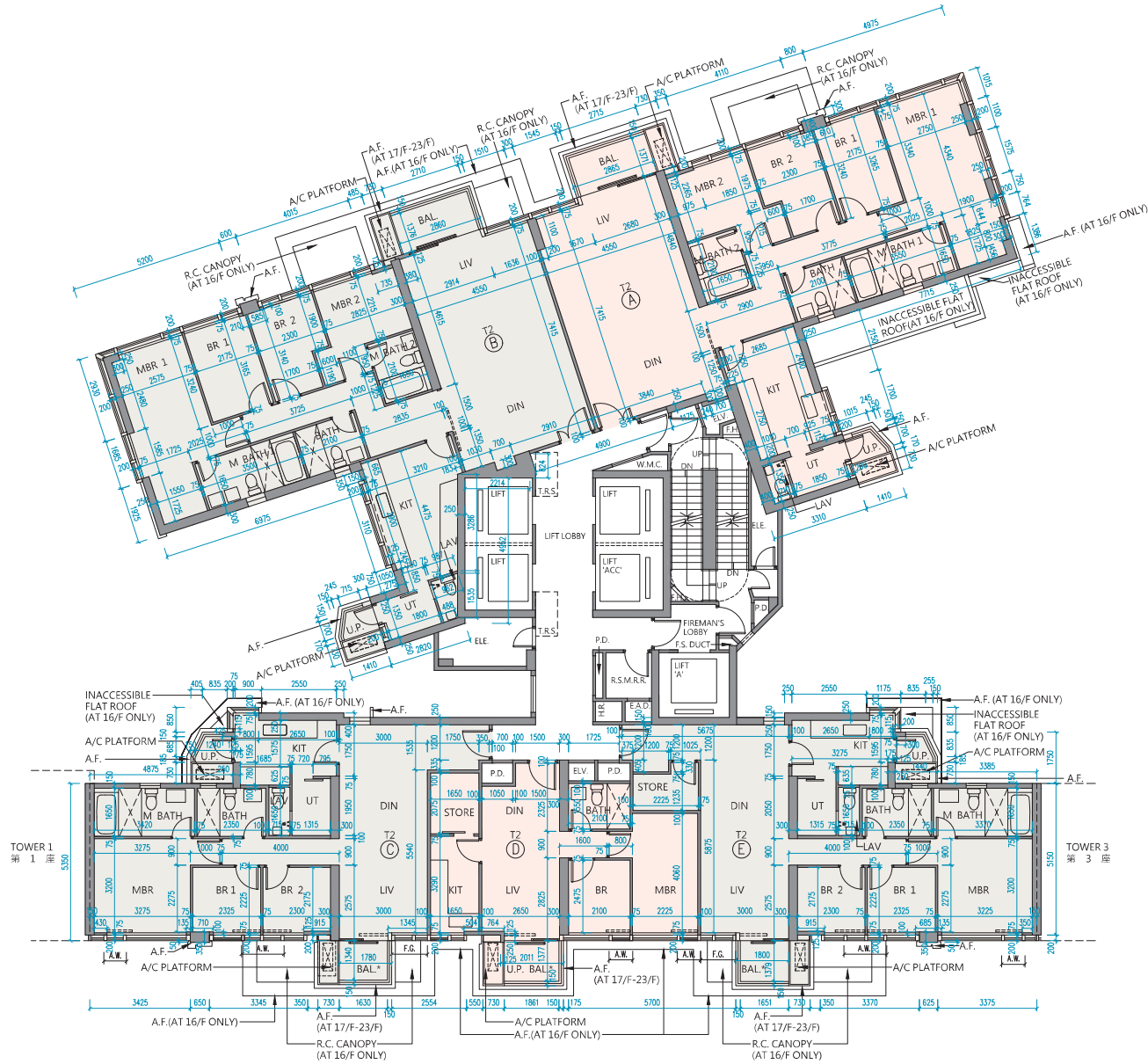
因住宅物業的較高樓層的結構牆的厚度遞減，較高樓層的內部面積，一般比較低樓層的內部面積稍大。部份單位之天花高度將會因應結構、建築及/或裝修設計上的需要而有差異。

### 備註：

1. 樓面平面圖所列之尺寸為以毫米標示之建築結構尺寸，並以四捨五入至整數。
2. 有關噪音緩解措施之詳情，請參閱本售樓說明書的有關資料章節。
3. 樓面平面圖中顯示之名詞及簡稱之圖例請參閱本售樓說明書第32頁至第33頁。
4. 期數的住宅樓層由1樓至28樓。每座不設4樓、13樓、14樓及24樓。

# 11 FLOOR PLANS OF RESIDENTIAL PROPERTIES IN THE PHASE 期數的住宅物業的樓面平面圖

Tower 2 | 16/F-23/F  
第2座 | 16樓至23樓



Scale: 0 5M/米  
比例: 5M/米

# 11 FLOOR PLANS OF RESIDENTIAL PROPERTIES IN THE PHASE 期數的住宅物業的樓面平面圖

## Tower 2 | 16/F-23/F

### 第2座 | 16樓至23樓

Description 描述		The floor-to-floor height (refers to the height between the top surface of the structural slab of a floor and the top surface of the structural slab of its immediate upper floor) of each residential property (mm) 每個住宅物業的層與層之間的高度 (指該樓層之石屎地台面與上一層石屎地台面之高度距離) (毫米)					The thickness of the floor slabs (excluding plaster) of each residential property (mm) 每個住宅物業的樓板 (不包括灰泥) 的厚度 (毫米)					
Tower 座數	Floor 樓層	Unit 單位	A	B	C	D	E	A	B	C	D	E
Tower 2 第2座	16/F 16樓		2925, 2950, 3275, 3300, 3650, 3700	2900, 3100, 3300, 3650	2950, 3300	3025, 3300, 3500, 3650	2950, 3300	150, 200	150, 200	150,175, 250	150	150,175, 250
	17/F-23/F 17樓至23樓		3300	3300	3300	3300	3300	150, 200	150, 200	150, 175, 250	150	150, 175, 250

The internal areas of the residential properties on the upper floors will generally be slightly larger than those on the lower floors because of the reducing thickness of the structural walls on the upper floors.

The internal ceiling height within part of the residential properties may vary due to structural, architectural and/or decoration design variations.

#### Notes:

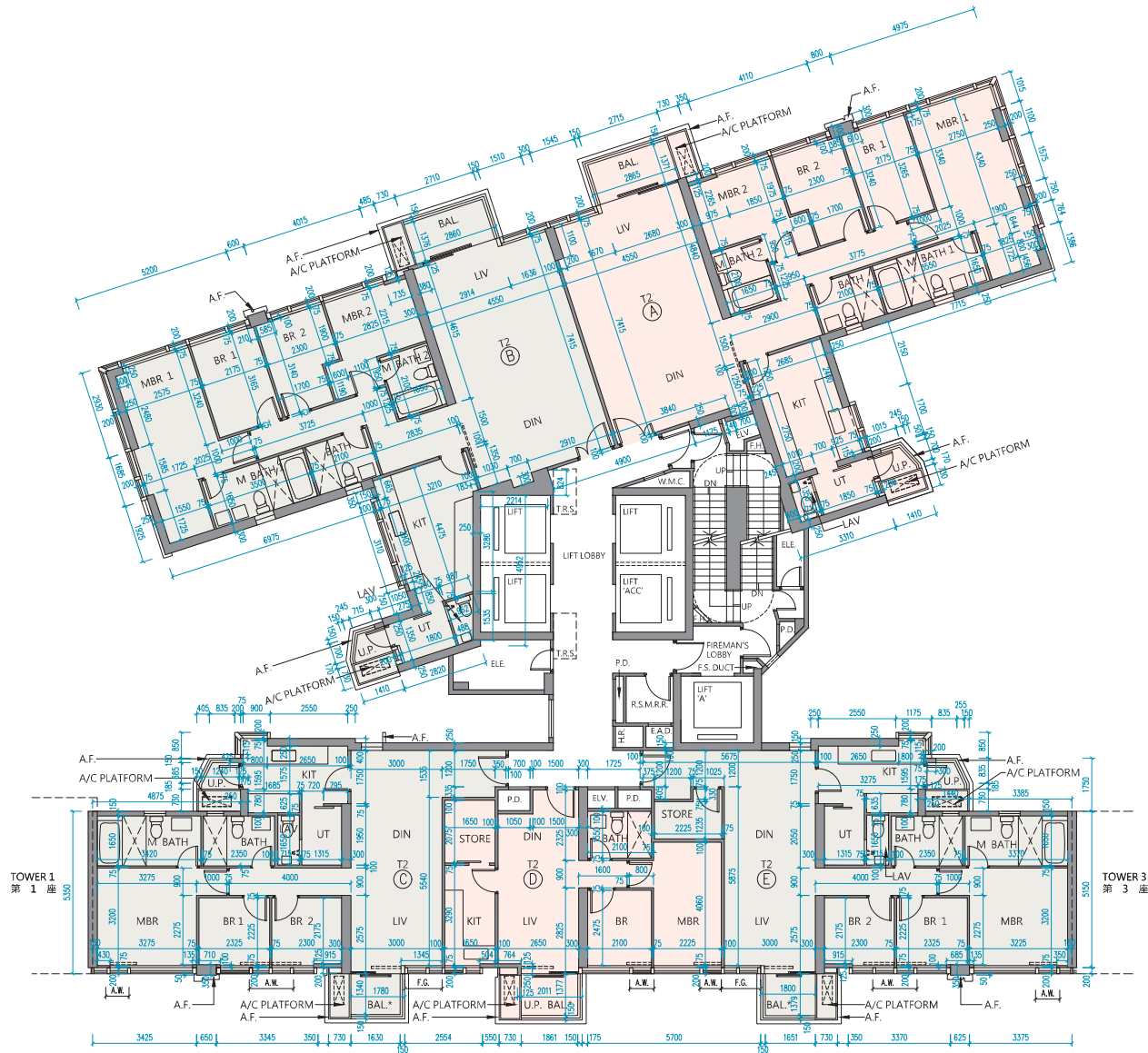
- The dimensions in the floor plans are all structural dimensions in millimetre and rounded off to the nearest integer.
- For details of the noise mitigation measures, please refer to the Relevant Information section in this sales brochure.
- Please refer to page 32 to page 33 of this sales brochure for legend of the terms and abbreviations shown in the floor plan.
- Residential floors of the Phase are from 1/F to 28/F. There are no 4/F, 13/F, 14/F, 24/F in each Tower.

因住宅物業的較高樓層的結構牆的厚度遞減，較高樓層的內部面積，一般比較低樓層的內部面積稍大。部份單位之天花高度將會因應結構、建築及/或裝修設計上的需要而有差異。

#### 備註：

- 樓面平面圖所列之尺寸為以毫米標示之建築結構尺寸，並以四捨五入至整數。
- 有關噪音緩解措施之詳情，請參閱本售樓說明書的有關資料章節。
- 樓面平面圖中顯示之名詞及簡稱之圖例請參閱本售樓說明書第32頁至第33頁。
- 期數的住宅樓層由1樓至28樓。每座不設4樓、13樓、14樓及24樓。

Tower 2 | 25/F  
第2座 | 25樓



Scale: 0 5M/米  
比例:

# 11 FLOOR PLANS OF RESIDENTIAL PROPERTIES IN THE PHASE 期數的住宅物業的樓面平面圖

## Tower 2 | 25/F

### 第2座 | 25樓

Description 描述		The floor-to-floor height (refers to the height between the top surface of the structural slab of a floor and the top surface of the structural slab of its immediate upper floor) of each residential property (mm) 每個住宅物業的層與層之間的高度 (指該樓層之石屎地台面與上一層石屎地台面之高度距離) (毫米)					The thickness of the floor slabs (excluding plaster) of each residential property (mm) 每個住宅物業的樓板 (不包括灰泥) 的厚度 (毫米)					
Tower 座數	Floor 樓層	Unit 單位	A	B	C	D	E	A	B	C	D	E
Tower 2 第2座	25/F 25樓		3300	3300	3300	3300	3300	150, 200	150, 200	150, 175, 250	150	150, 175, 250

The internal areas of the residential properties on the upper floors will generally be slightly larger than those on the lower floors because of the reducing thickness of the structural walls on the upper floors.

The internal ceiling height within part of the residential properties may vary due to structural, architectural and/or decoration design variations.

#### Notes:

1. The dimensions in the floor plans are all structural dimensions in millimetre and rounded off to the nearest integer.
2. For details of the noise mitigation measures, please refer to the Relevant Information section in this sales brochure.
3. Please refer to page 32 to page 33 of this sales brochure for legend of the terms and abbreviations shown in the floor plan.
4. Residential floors of the Phase are from 1/F to 28/F. There are no 4/F, 13/F, 14/F, 24/F in each Tower.

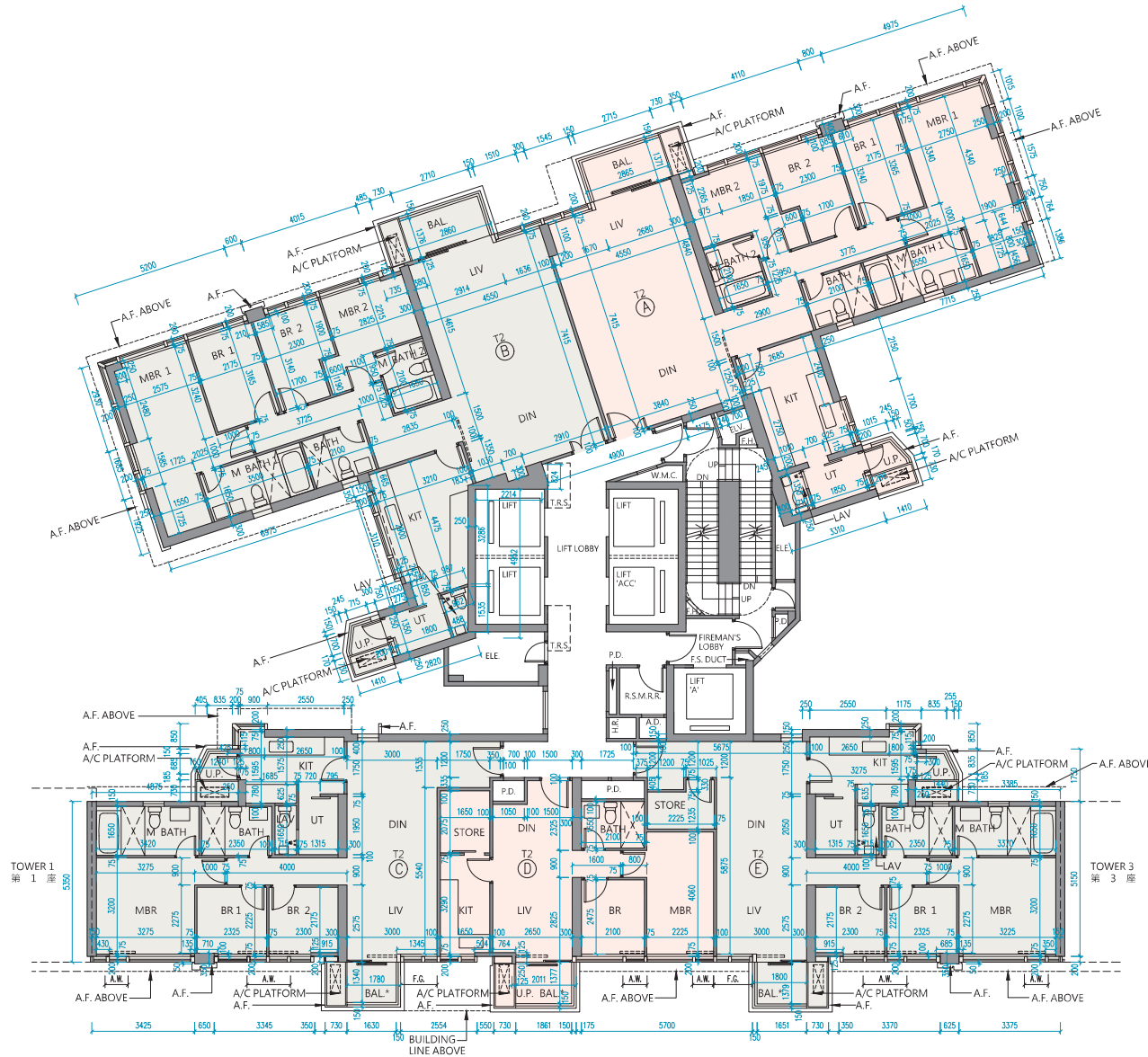
因住宅物業的較高樓層的結構牆的厚度遞減，較高樓層的內部面積，一般比較低樓層的內部面積稍大。部份單位之天花高度將會因應結構、建築及/或裝修設計上的需要而有差異。

#### 備註：

1. 樓面平面圖所列之尺寸為以毫米標示之建築結構尺寸，並以四捨五入至整數。
2. 有關噪音緩解措施之詳情，請參閱本售樓說明書的有關資料章節。
3. 樓面平面圖中顯示之名詞及簡稱之圖例請參閱本售樓說明書第32頁至第33頁。
4. 期數的住宅樓層由1樓至28樓。每座不設4樓、13樓、14樓及24樓。

# 11 FLOOR PLANS OF RESIDENTIAL PROPERTIES IN THE PHASE 期數的住宅物業的樓面平面圖

Tower 2 | 26/F  
第2座 | 26樓



Scale: 0 5M/米  
比例: 5M/米

# 11 FLOOR PLANS OF RESIDENTIAL PROPERTIES IN THE PHASE 期數的住宅物業的樓面平面圖

## Tower 2 | 26/F

### 第2座 | 26樓

Description 描述		The floor-to-floor height (refers to the height between the top surface of the structural slab of a floor and the top surface of the structural slab of its immediate upper floor) of each residential property (mm) 每個住宅物業的層與層之間的高度（指該樓層之石屎地台面與上一層石屎地台面之高度距離）（毫米）					The thickness of the floor slabs (excluding plaster) of each residential property (mm) 每個住宅物業的樓板（不包括灰泥）的厚度（毫米）					
Tower 座數	Floor 樓層	Unit 單位	A	B	C	D	E	A	B	C	D	E
Tower 2 第2座	26/F 26樓		3150, 3175, 3250, 3300, 3500, 3525, 3575, 3700, 3850, 3875	3100, 3125, 3150, 3225, 3350, 3450, 3500, 3575, 3700, 3850, 3900	3300, 3500, 3575, 3650, 3850	3150, 3425, 3500, 3575, 3700, 3850	3500, 3850	150, 200	150, 200	150, 175	150	150, 175

The internal areas of the residential properties on the upper floors will generally be slightly larger than those on the lower floors because of the reducing thickness of the structural walls on the upper floors.

The internal ceiling height within part of the residential properties may vary due to structural, architectural and/or decoration design variations.

#### Notes:

- The dimensions in the floor plans are all structural dimensions in millimetre and rounded off to the nearest integer.
- For details of the noise mitigation measures, please refer to the Relevant Information section in this sales brochure.
- Please refer to page 32 to page 33 of this sales brochure for legend of the terms and abbreviations shown in the floor plan.
- Residential floors of the Phase are from 1/F to 28/F. There are no 4/F, 13/F, 14/F, 24/F in each Tower.

因住宅物業的較高樓層的結構牆的厚度遞減，較高樓層的內部面積，一般比較低樓層的內部面積稍大。部份單位之天花高度將會因應結構、建築及/或裝修設計上的需要而有差異。

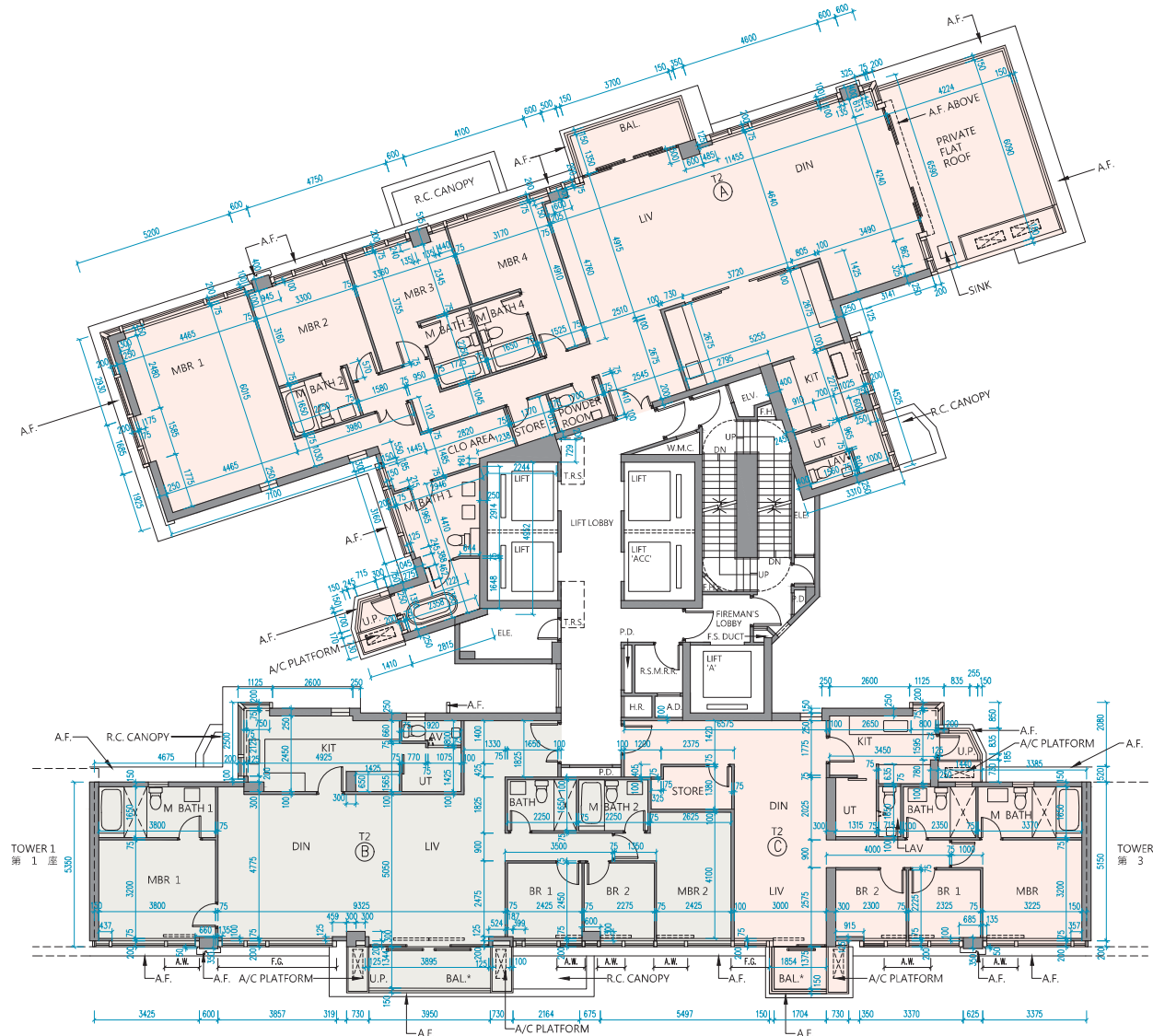
#### 備註：

- 樓面平面圖所列之尺寸為以毫米標示之建築結構尺寸，並以四捨五入至整數。
- 有關噪音緩解措施之詳情，請參閱本售樓說明書的有關資料章節。
- 樓面平面圖中顯示之名詞及簡稱之圖例請參閱本售樓說明書第32頁至第33頁。
- 期數的住宅樓層由1樓至28樓。每座不設4樓、13樓、14樓及24樓。



# 11 FLOOR PLANS OF RESIDENTIAL PROPERTIES IN THE PHASE 期數的住宅物業的樓面平面圖

Tower 2 | 27/F  
第2座 | 27樓



Scale: 0 5M/米  
比例: 5M/米

# 11 FLOOR PLANS OF RESIDENTIAL PROPERTIES IN THE PHASE 期數的住宅物業的樓面平面圖

## Tower 2 | 27/F

### 第2座 | 27樓

Description 描述		The floor-to-floor height (refers to the height between the top surface of the structural slab of a floor and the top surface of the structural slab of its immediate upper floor) of each residential property (mm) 每個住宅物業的層與層之間的高度 (指該樓層之石屎地台面與上一層石屎地台面之高度距離) (毫米)			The thickness of the floor slabs (excluding plaster) of each residential property (mm) 每個住宅物業的樓板 (不包括灰泥) 的厚度 (毫米)			
Tower 座數	Floor 樓層	Unit 單位	A	B	C	A	B	C
Tower 2 第2座	27/F 27樓		3100, 3150, 3300, 3350, 3500, 3850, 3900, 3950	3150, 3225, 3300, 3350, 3425, 3500, 3575, 3700, 3850	3150, 3425, 3500, 3575, 3850	150, 200, 250, 275	150, 200, 275	150, 175, 250

The internal areas of the residential properties on the upper floors will generally be slightly larger than those on the lower floors because of the reducing thickness of the structural walls on the upper floors.

The internal ceiling height within part of the residential properties may vary due to structural, architectural and/or decoration design variations.

#### Notes:

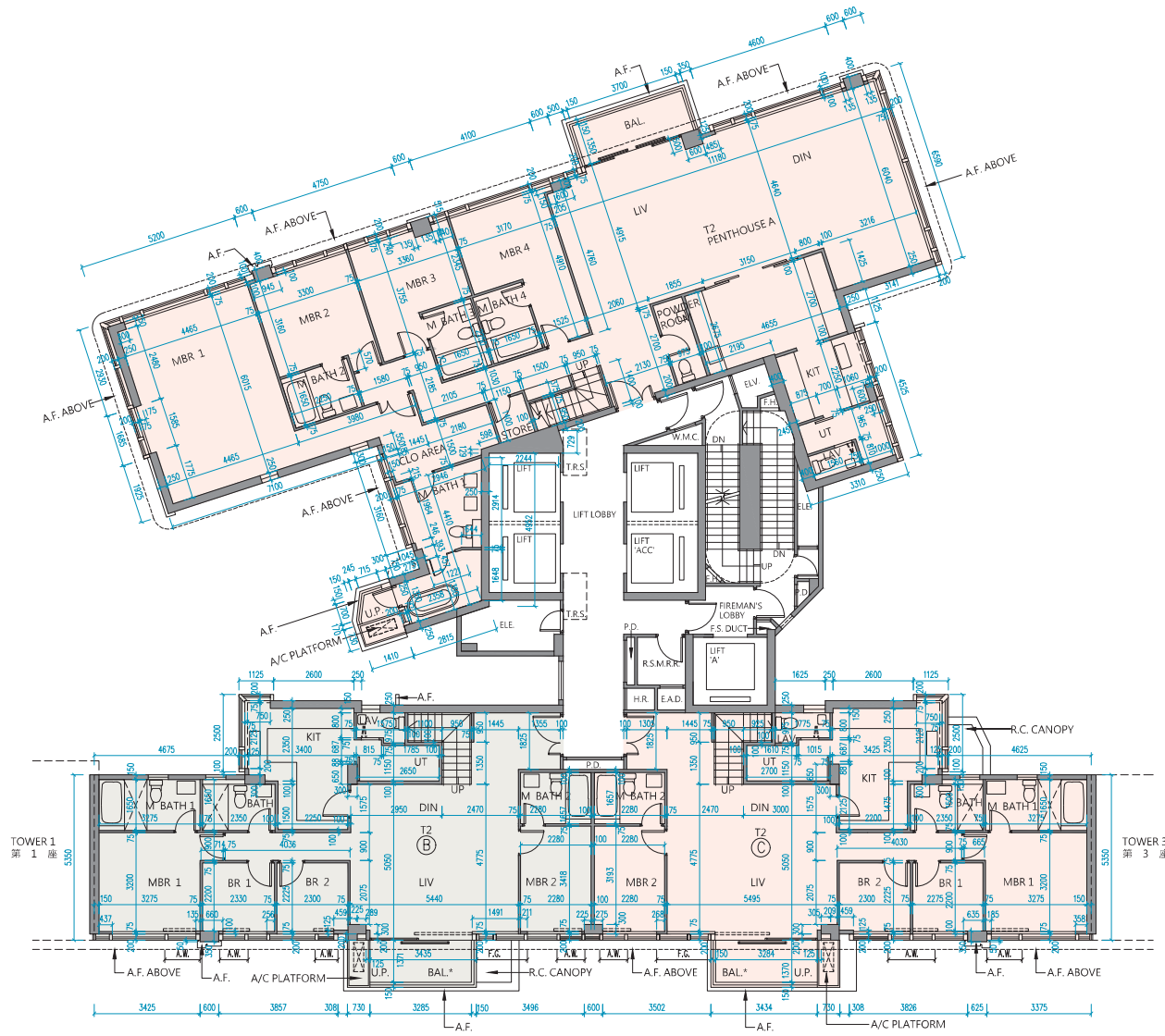
1. The dimensions in the floor plans are all structural dimensions in millimetre and rounded off to the nearest integer.
2. For details of the noise mitigation measures, please refer to the Relevant Information section in this sales brochure.
3. Please refer to page 32 to page 33 of this sales brochure for legend of the terms and abbreviations shown in the floor plan.
4. Residential floors of the Phase are from 1/F to 28/F. There are no 4/F, 13/F, 14/F, 24/F in each Tower.

因住宅物業的較高樓層的結構牆的厚度遞減，較高樓層的內部面積，一般比較低樓層的內部面積稍大。部份單位之天花高度將會因應結構、建築及/或裝修設計上的需要而有差異。

#### 備註：

1. 樓面平面圖所列之尺寸為以毫米標示之建築結構尺寸，並以四捨五入至整數。
2. 有關噪音緩解措施之詳情，請參閱本售樓說明書的有關資料章節。
3. 樓面平面圖中顯示之名詞及簡稱之圖例請參閱本售樓說明書第32頁至第33頁。
4. 期數的住宅樓層由1樓至28樓。每座不設4樓、13樓、14樓及24樓。

Tower 2 | 28/F  
第2座 | 28樓



Scale: 0  
比例: 5M/米

# 11 FLOOR PLANS OF RESIDENTIAL PROPERTIES IN THE PHASE 期數的住宅物業的樓面平面圖

## Tower 2 | 28/F

### 第2座 | 28樓

Description 描述		The floor-to-floor height (refers to the height between the top surface of the structural slab of a floor and the top surface of the structural slab of its immediate upper floor) of each residential property (mm) 每個住宅物業的層與層之間的高度 (指該樓層之石屎地台面與上一層石屎地台面之高度距離) (毫米)			The thickness of the floor slabs (excluding plaster) of each residential property (mm) 每個住宅物業的樓板 (不包括灰泥) 的厚度 (毫米)			
Tower 座數	Floor 樓層	Unit 單位	A	B	C	A	B	C
Tower 2 第2座	28/F 28樓		3500, 3850, 3900, 4050, 4200	3500, 3575, 3700, 3850	3500, 3575, 3850	150, 200, 250	200, 225	150, 200, 225

The internal areas of the residential properties on the upper floors will generally be slightly larger than those on the lower floors because of the reducing thickness of the structural walls on the upper floors.

The internal ceiling height within part of the residential properties may vary due to structural, architectural and/or decoration design variations.

#### Notes:

1. The dimensions in the floor plans are all structural dimensions in millimetre and rounded off to the nearest integer.
2. For details of the noise mitigation measures, please refer to the Relevant Information section in this sales brochure.
3. Please refer to page 32 to page 33 of this sales brochure for legend of the terms and abbreviations shown in the floor plan.
4. Residential floors of the Phase are from 1/F to 28/F. There are no 4/F, 13/F, 14/F, 24/F in each Tower.

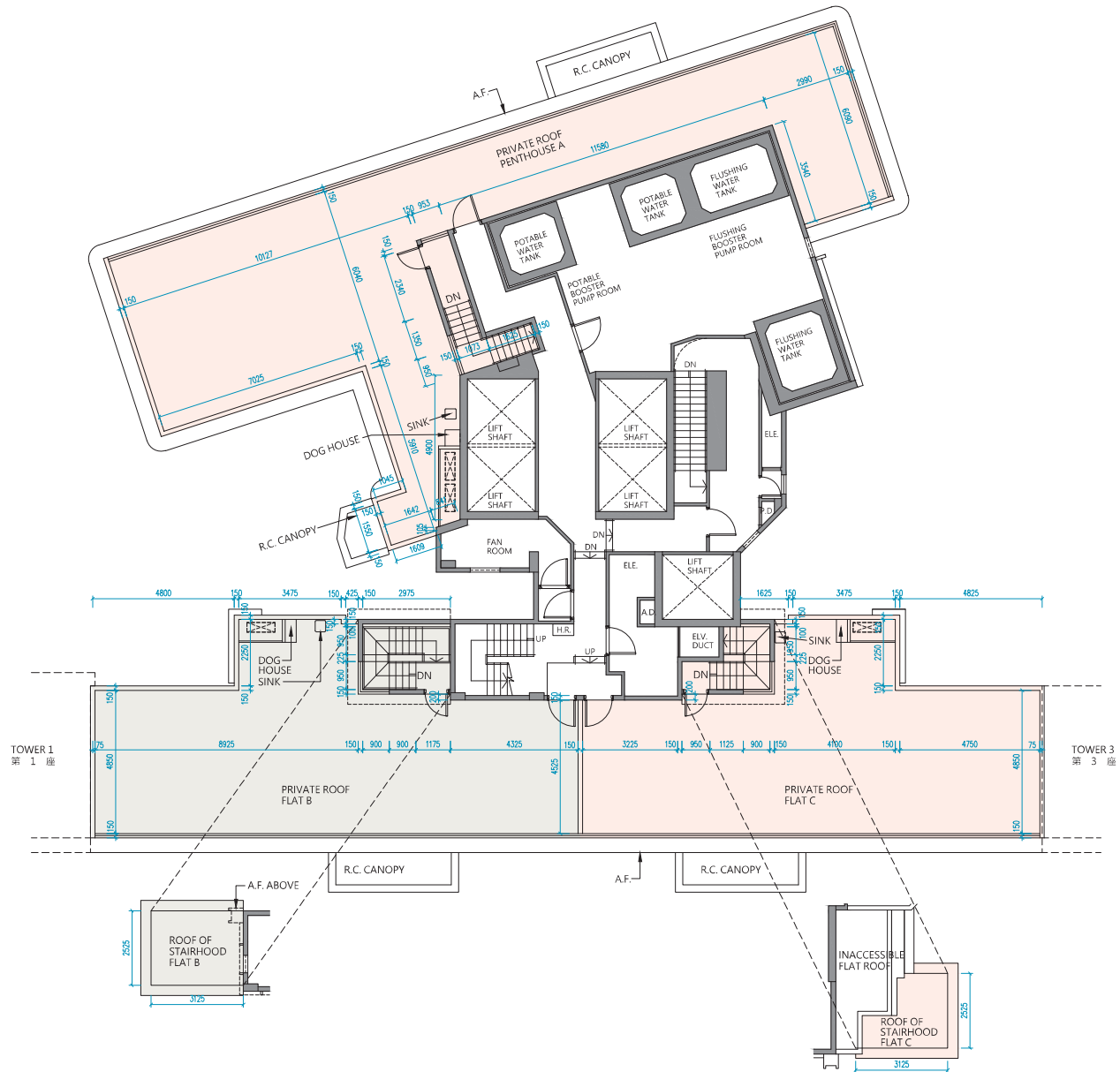
因住宅物業的較高樓層的結構牆的厚度遞減，較高樓層的內部面積，一般比較低樓層的內部面積稍大。部份單位之天花高度將會因應結構、建築及/或裝修設計上的需要而有差異。

#### 備註：

1. 樓面平面圖所列之尺寸為以毫米標示之建築結構尺寸，並以四捨五入至整數。
2. 有關噪音緩解措施之詳情，請參閱本售樓說明書的有關資料章節。
3. 樓面平面圖中顯示之名詞及簡稱之圖例請參閱本售樓說明書第32頁至第33頁。
4. 期數的住宅樓層由1樓至28樓。每座不設4樓、13樓、14樓及24樓。

# 11 FLOOR PLANS OF RESIDENTIAL PROPERTIES IN THE PHASE 期數的住宅物業的樓面平面圖

## Tower 2 | Roof 第2座 | 天台



Scale: 0 5M/米  
比例: 0 5M/米

# 11 FLOOR PLANS OF RESIDENTIAL PROPERTIES IN THE PHASE 期數的住宅物業的樓面平面圖

## Tower 2 | Roof

### 第2座 | 天台

Description 描述		The floor-to-floor height (refers to the height between the top surface of the structural slab of a floor and the top surface of the structural slab of its immediate upper floor) of each residential property (mm) 每個住宅物業的層與層之間的高度 (指該樓層之石屎地台面與上一層石屎地台面之高度距離) (毫米)			The thickness of the floor slabs (excluding plaster) of each residential property (mm) 每個住宅物業的樓板 (不包括灰泥) 的厚度 (毫米)			
Tower 座數	Floor 樓層	Unit 單位	A	B	C	A	B	C
Tower 2 第2座	Roof 天台		Not applicable 不適用			Not applicable 不適用		

The internal areas of the residential properties on the upper floors will generally be slightly larger than those on the lower floors because of the reducing thickness of the structural walls on the upper floors.

The internal ceiling height within part of the residential properties may vary due to structural, architectural and/or decoration design variations.

#### Notes:

1. The dimensions in the floor plans are all structural dimensions in millimetre and rounded off to the nearest integer.
2. For details of the noise mitigation measures, please refer to the Relevant Information section in this sales brochure.
3. Please refer to page 32 to page 33 of this sales brochure for legend of the terms and abbreviations shown in the floor plan.
4. Residential floors of the Phase are from 1/F to 28/F. There are no 4/F, 13/F, 14/F, 24/F in each Tower.

因住宅物業的較高樓層的結構牆的厚度遞減，較高樓層的內部面積，一般比較低樓層的內部面積稍大。部份單位之天花高度將會因應結構、建築及/或裝修設計上的需要而有差異。

#### 備註：

1. 樓面平面圖所列之尺寸為以毫米標示之建築結構尺寸，並以四捨五入至整數。
2. 有關噪音緩解措施之詳情，請參閱本售樓說明書的有關資料章節。
3. 樓面平面圖中顯示之名詞及簡稱之圖例請參閱本售樓說明書第32頁至第33頁。
4. 期數的住宅樓層由1樓至28樓。每座不設4樓、13樓、14樓及24樓。

# 11 FLOOR PLANS OF RESIDENTIAL PROPERTIES IN THE PHASE 期數的住宅物業的樓面平面圖

Tower 3 | 1/F  
第3座 | 1樓



Scale: 0  
比例: 5M/米

# 11 FLOOR PLANS OF RESIDENTIAL PROPERTIES IN THE PHASE 期數的住宅物業的樓面平面圖

## Tower 3 | 1/F 第3座 | 1樓

Description 描述		The floor-to-floor height (refers to the height between the top surface of the structural slab of a floor and the top surface of the structural slab of its immediate upper floor) of each residential property (mm) 每個住宅物業的層與層之間的高度（指該樓層之石屎地台面與上一層石屎地台面之高度距離）（毫米）							The thickness of the floor slabs (excluding plaster) of each residential property (mm) 每個住宅物業的樓板（不包括灰泥）的厚度（毫米）							
Tower 座數	Floor 樓層	Unit 單位	A	B	C	D	E	F	G	A	B	C	D	E	F	G
Tower 3 第3座	1/F 1樓		3300, 3450, 3475, 3575, 3650	3250, 3275, 3300, 3475, 3575, 3650	3300, 3450, 3475, 3575, 3650	3300, 3450, 3475, 3575, 3650	3300, 3450, 3475, 3575, 3650	3300, 3450, 3475, 3575, 3650	3300, 3475, 3575, 3650	150, 175	150, 175	150, 175	150, 175	150	150	150

The internal areas of the residential properties on the upper floors will generally be slightly larger than those on the lower floors because of the reducing thickness of the structural walls on the upper floors.

The internal ceiling height within part of the residential properties may vary due to structural, architectural and/or decoration design variations.

### Notes:

1. The dimensions in the floor plans are all structural dimensions in millimetre and rounded off to the nearest integer.
2. For details of the noise mitigation measures, please refer to the Relevant Information section in this sales brochure.
3. Please refer to page 32 to page 33 of this sales brochure for legend of the terms and abbreviations shown in the floor plan.
4. Residential floors of the Phase are from 1/F to 28/F. There are no 4/F, 13/F, 14/F, 24/F in each Tower.

因住宅物業的較高樓層的結構牆的厚度遞減，較高樓層的內部面積，一般比較低樓層的內部面積稍大。部份單位之天花高度將會因應結構、建築及/或裝修設計上的需要而有差異。

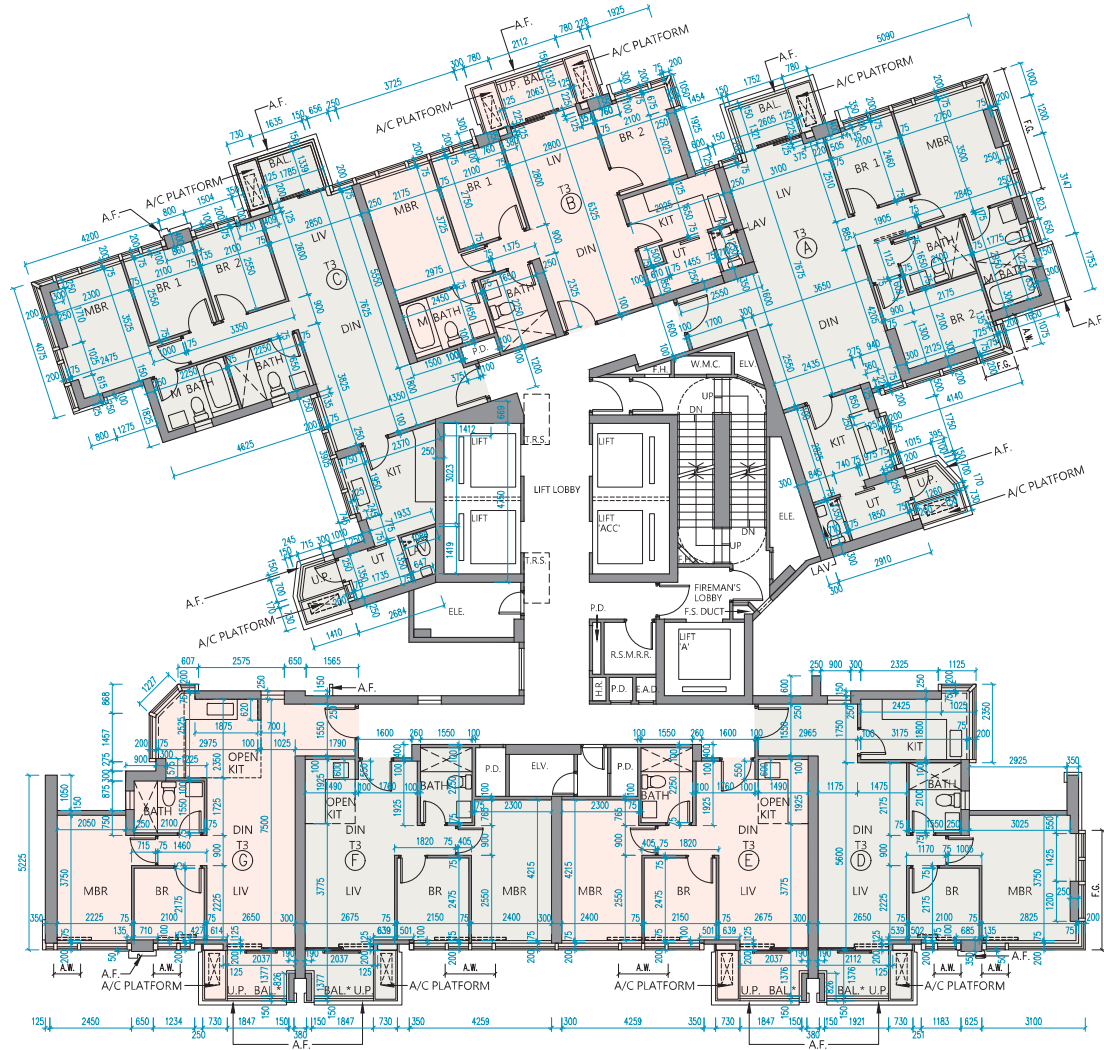
### 備註：

1. 樓面平面圖所列之尺寸為以毫米標示之建築結構尺寸，並以四捨五入至整數。
2. 有關噪音緩解措施之詳情，請參閱本售樓說明書的有關資料章節。
3. 樓面平面圖中顯示之名詞及簡稱之圖例請參閱本售樓說明書第32頁至第33頁。
4. 期數的住宅樓層由1樓至28樓。每座不設4樓、13樓、14樓及24樓。



# 11 FLOOR PLANS OF RESIDENTIAL PROPERTIES IN THE PHASE 期數的住宅物業的樓面平面圖

Tower 3 | 2/F-3/F  
第3座 | 2樓至3樓



Scale: 0 5M/米  
比例:

# 11 FLOOR PLANS OF RESIDENTIAL PROPERTIES IN THE PHASE 期數的住宅物業的樓面平面圖

## Tower 3 | 2/F-3/F 第3座 | 2樓至3樓

Description 描述		The floor-to-floor height (refers to the height between the top surface of the structural slab of a floor and the top surface of the structural slab of its immediate upper floor) of each residential property (mm) 每個住宅物業的層與層之間的高度 (指該樓層之石屎地台面與上一層石屎地台面之高度距離) (毫米)							The thickness of the floor slabs (excluding plaster) of each residential property (mm) 每個住宅物業的樓板 (不包括灰泥) 的厚度 (毫米)							
Tower 座數	Floor 樓層	Unit 單位	A	B	C	D	E	F	G	A	B	C	D	E	F	G
Tower 3 第3座	2/F-3/F 2樓至3樓		3300	3300	3300	3300	3300	3300	3300	150, 175	150, 175	150, 175	150, 175	150	150	150

The internal areas of the residential properties on the upper floors will generally be slightly larger than those on the lower floors because of the reducing thickness of the structural walls on the upper floors.

The internal ceiling height within part of the residential properties may vary due to structural, architectural and/or decoration design variations.

### Notes:

1. The dimensions in the floor plans are all structural dimensions in millimetre and rounded off to the nearest integer.
2. For details of the noise mitigation measures, please refer to the Relevant Information section in this sales brochure.
3. Please refer to page 32 to page 33 of this sales brochure for legend of the terms and abbreviations shown in the floor plan.
4. Residential floors of the Phase are from 1/F to 28/F. There are no 4/F, 13/F, 14/F, 24/F in each Tower.

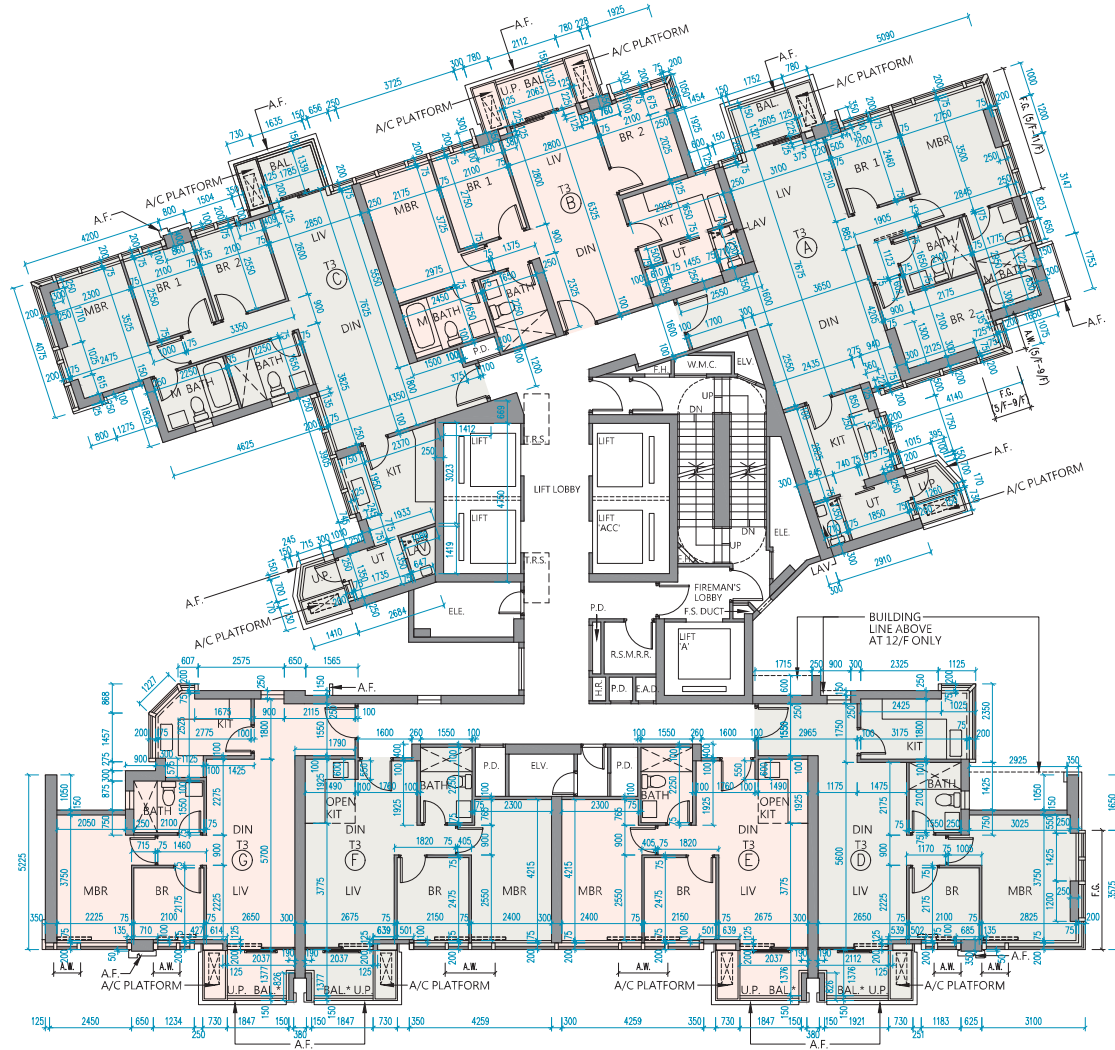
因住宅物業的較高樓層的結構牆的厚度遞減，較高樓層的內部面積，一般比較低樓層的內部面積稍大。部份單位之天花高度將會因應結構、建築及/或裝修設計上的需要而有差異。

### 備註：

1. 樓面平面圖所列之尺寸為以毫米標示之建築結構尺寸，並以四捨五入至整數。
2. 有關噪音緩解措施之詳情，請參閱本售樓說明書的有關資料章節。
3. 樓面平面圖中顯示之名詞及簡稱之圖例請參閱本售樓說明書第32頁至第33頁。
4. 期數的住宅樓層由1樓至28樓。每座不設4樓、13樓、14樓及24樓。

# 11 FLOOR PLANS OF RESIDENTIAL PROPERTIES IN THE PHASE 期數的住宅物業的樓面平面圖

Tower 3 | 5/F-12/F  
第3座 | 5樓至12樓



Scale: 0 5M/米  
比例:

# 11 FLOOR PLANS OF RESIDENTIAL PROPERTIES IN THE PHASE 期數的住宅物業的樓面平面圖

## Tower 3 | 5/F-12/F 第3座 | 5樓至12樓

Description 描述		The floor-to-floor height (refers to the height between the top surface of the structural slab of a floor and the top surface of the structural slab of its immediate upper floor) of each residential property (mm) 每個住宅物業的層與層之間的高度 (指該樓層之石屎地台面與上一層石屎地台面之高度距離) (毫米)							The thickness of the floor slabs (excluding plaster) of each residential property (mm) 每個住宅物業的樓板 (不包括灰泥) 的厚度 (毫米)							
Tower 座數	Floor 樓層	Unit 單位	A	B	C	D	E	F	G	A	B	C	D	E	F	G
Tower 3 第3座	5/F-12/F 5樓至12樓		3300	3300	3300	3300	3300	3300	3300	150, 175	150, 175	150, 175	150, 175	150	150	150

The internal areas of the residential properties on the upper floors will generally be slightly larger than those on the lower floors because of the reducing thickness of the structural walls on the upper floors.

The internal ceiling height within part of the residential properties may vary due to structural, architectural and/or decoration design variations.

### Notes:

1. The dimensions in the floor plans are all structural dimensions in millimetre and rounded off to the nearest integer.
2. For details of the noise mitigation measures, please refer to the Relevant Information section in this sales brochure.
3. Please refer to page 32 to page 33 of this sales brochure for legend of the terms and abbreviations shown in the floor plan.
4. Residential floors of the Phase are from 1/F to 28/F. There are no 4/F, 13/F, 14/F, 24/F in each Tower.

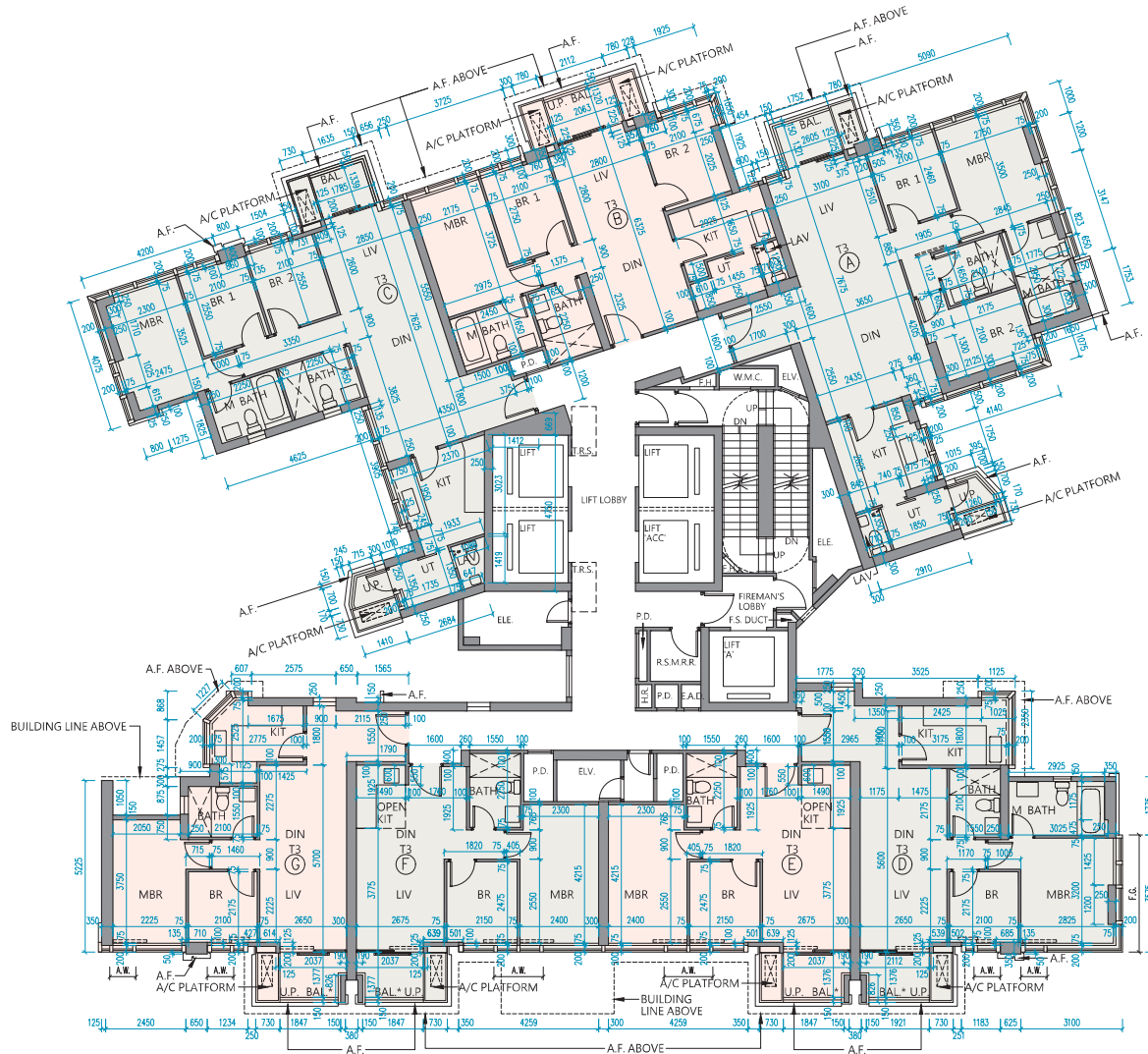
因住宅物業的較高樓層的結構牆的厚度遞減，較高樓層的內部面積，一般比較低樓層的內部面積稍大。部份單位之天花高度將會因應結構、建築及/或裝修設計上的需要而有差異。

### 備註：

1. 樓面平面圖所列之尺寸為以毫米標示之建築結構尺寸，並以四捨五入至整數。
2. 有關噪音緩解措施之詳情，請參閱本售樓說明書的有關資料章節。
3. 樓面平面圖中顯示之名詞及簡稱之圖例請參閱本售樓說明書第32頁至第33頁。
4. 期數的住宅樓層由1樓至28樓。每座不設4樓、13樓、14樓及24樓。

# 11 FLOOR PLANS OF RESIDENTIAL PROPERTIES IN THE PHASE 期數的住宅物業的樓面平面圖

Tower 3 | 15/F  
第3座 | 15樓



Scale: 0 5M/米  
比例:

# 11 FLOOR PLANS OF RESIDENTIAL PROPERTIES IN THE PHASE 期數的住宅物業的樓面平面圖

## Tower 3 | 15/F

### 第3座 | 15樓

Description 描述		The floor-to-floor height (refers to the height between the top surface of the structural slab of a floor and the top surface of the structural slab of its immediate upper floor) of each residential property (mm) 每個住宅物業的層與層之間的高度 (指該樓層之石屎地台面與上一層石屎地台面之高度距離) (毫米)							The thickness of the floor slabs (excluding plaster) of each residential property (mm) 每個住宅物業的樓板 (不包括灰泥) 的厚度 (毫米)							
Tower 座數	Floor 樓層	Unit 單位	A	B	C	D	E	F	G	A	B	C	D	E	F	G
Tower 3 第3座	15/F 15樓		3300	3300	3100, 3225, 3300, 3375	2950, 3025, 3300, 3375, 3500, 3650	2950, 3225, 3300, 3375, 3500, 3650	2950, 3100, 3300, 3500, 3650	2950, 3025, 3225, 3300, 3475, 3575, 3650	150, 175	150, 175	150, 175	150, 175, 275, 300	150, 300	150, 300	150, 275, 300

The internal areas of the residential properties on the upper floors will generally be slightly larger than those on the lower floors because of the reducing thickness of the structural walls on the upper floors.

The internal ceiling height within part of the residential properties may vary due to structural, architectural and/or decoration design variations.

#### Notes:

1. The dimensions in the floor plans are all structural dimensions in millimetre and rounded off to the nearest integer.
2. For details of the noise mitigation measures, please refer to the Relevant Information section in this sales brochure.
3. Please refer to page 32 to page 33 of this sales brochure for legend of the terms and abbreviations shown in the floor plan.
4. Residential floors of the Phase are from 1/F to 28/F. There are no 4/F, 13/F, 14/F, 24/F in each Tower.

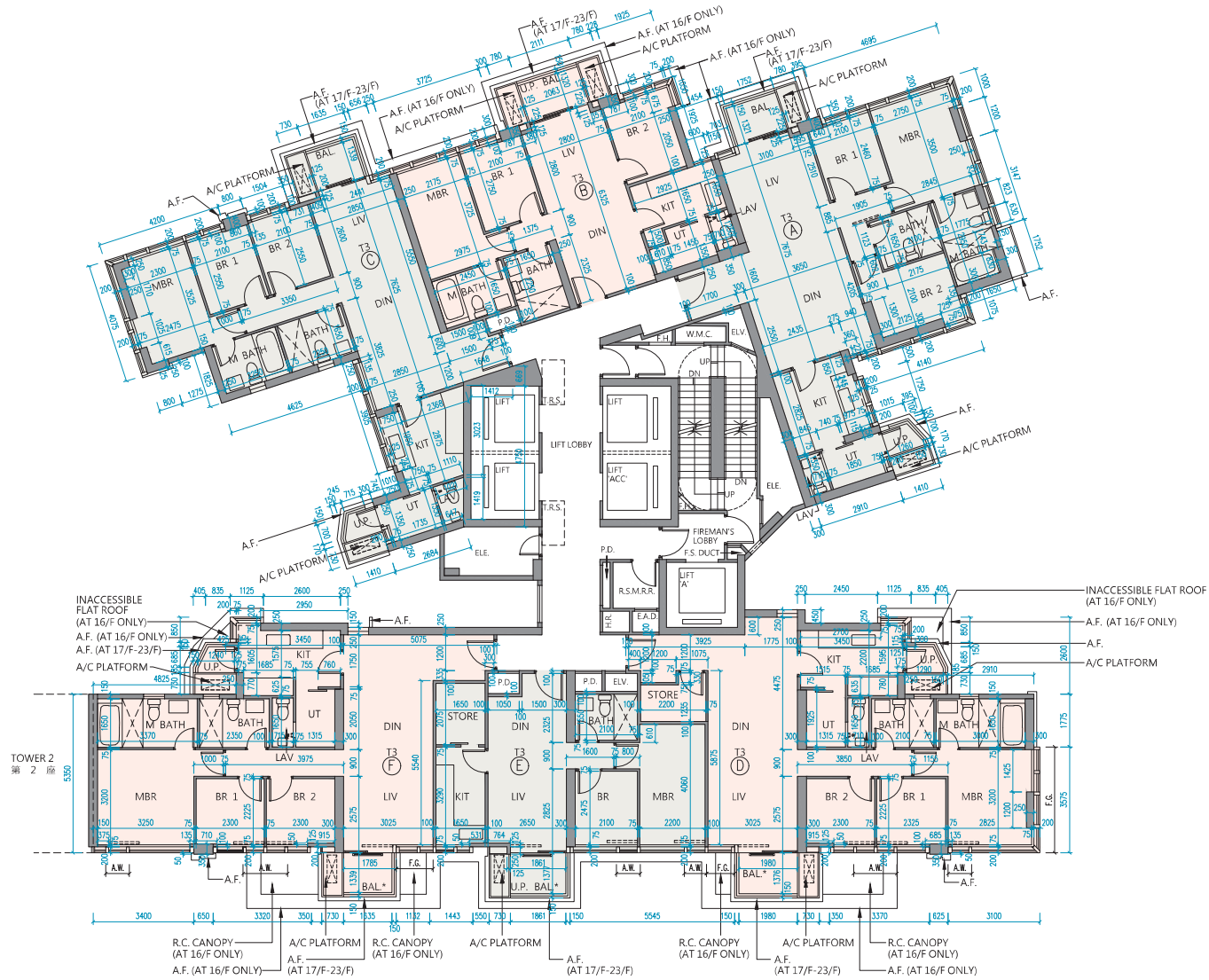
因住宅物業的較高樓層的結構牆的厚度遞減，較高樓層的內部面積，一般比較低樓層的內部面積稍大。部份單位之天花高度將會因應結構、建築及/或裝修設計上的需要而有差異。

#### 備註：

1. 樓面平面圖所列之尺寸為以毫米標示之建築結構尺寸，並以四捨五入至整數。
2. 有關噪音緩解措施之詳情，請參閱本售樓說明書的有關資料章節。
3. 樓面平面圖中顯示之名詞及簡稱之圖例請參閱本售樓說明書第32頁至第33頁。
4. 期數的住宅樓層由1樓至28樓。每座不設4樓、13樓、14樓及24樓。

# 11 FLOOR PLANS OF RESIDENTIAL PROPERTIES IN THE PHASE 期數的住宅物業的樓面平面圖

Tower 3 | 16/F-23/F  
第3座 | 16樓至23樓



Scale: 0  
比例: 5M/米

# 11 FLOOR PLANS OF RESIDENTIAL PROPERTIES IN THE PHASE 期數的住宅物業的樓面平面圖

## Tower 3 | 16/F-23/F

### 第3座 | 16樓至23樓

Description 描述		The floor-to-floor height (refers to the height between the top surface of the structural slab of a floor and the top surface of the structural slab of its immediate upper floor) of each residential property (mm) 每個住宅物業的層與層之間的高度 (指該樓層之石屎地台面與上一層石屎地台面之高度距離) (毫米)						The thickness of the floor slabs (excluding plaster) of each residential property (mm) 每個住宅物業的樓板 (不包括灰泥) 的厚度 (毫米)						
Tower 座數	Floor 樓層	Unit 單位	A	B	C	D	E	F	A	B	C	D	E	F
Tower 3 第3座	16/F 16樓		3225, 3300, 3650	3300, 3650	3100, 3225, 3300	2950, 3300, 3650	3300, 3500, 3650	2950, 3300, 3375, 3650	150, 175	150, 175	150, 175	150, 175, 250	150	150, 175, 250
	17/F-23/F 17樓至23樓		3300	3300	3300	3300	3300	3300	150, 175	150, 175	150, 175	150, 175, 250	150	150, 175, 250

The internal areas of the residential properties on the upper floors will generally be slightly larger than those on the lower floors because of the reducing thickness of the structural walls on the upper floors.

The internal ceiling height within part of the residential properties may vary due to structural, architectural and/or decoration design variations.

#### Notes:

1. The dimensions in the floor plans are all structural dimensions in millimetre and rounded off to the nearest integer.
2. For details of the noise mitigation measures, please refer to the Relevant Information section in this sales brochure.
3. Please refer to page 32 to page 33 of this sales brochure for legend of the terms and abbreviations shown in the floor plan.
4. Residential floors of the Phase are from 1/F to 28/F. There are no 4/F, 13/F, 14/F, 24/F in each Tower.

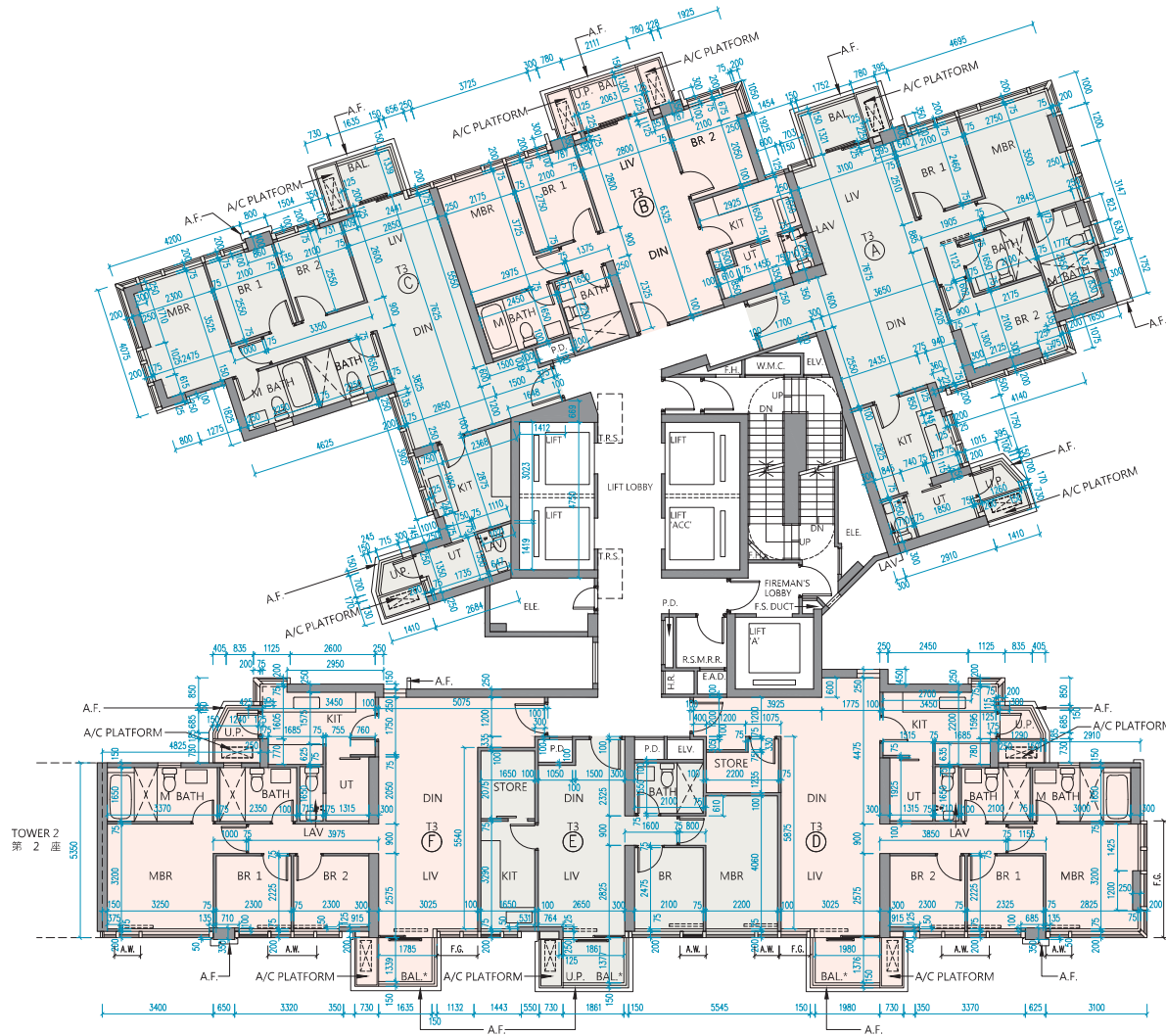
因住宅物業的較高樓層的結構牆的厚度遞減，較高樓層的內部面積，一般比較低樓層的內部面積稍大。部份單位之天花高度將會因應結構、建築及/或裝修設計上的需要而有差異。

#### 備註：

1. 樓面平面圖所列之尺寸為以毫米標示之建築結構尺寸，並以四捨五入至整數。
2. 有關噪音緩解措施之詳情，請參閱本售樓說明書的有關資料章節。
3. 樓面平面圖中顯示之名詞及簡稱之圖例請參閱本售樓說明書第32頁至第33頁。
4. 期數的住宅樓層由1樓至28樓。每座不設4樓、13樓、14樓及24樓。



Tower 3 | 25/F  
第3座 | 25樓



Scale: 0 5M/米  
比例:

# 11 FLOOR PLANS OF RESIDENTIAL PROPERTIES IN THE PHASE 期數的住宅物業的樓面平面圖

## Tower 3 | 25/F

### 第3座 | 25樓

Description 描述		The floor-to-floor height (refers to the height between the top surface of the structural slab of a floor and the top surface of the structural slab of its immediate upper floor) of each residential property (mm) 每個住宅物業的層與層之間的高度 (指該樓層之石屎地台面與上一層石屎地台面之高度距離) (毫米)						The thickness of the floor slabs (excluding plaster) of each residential property (mm) 每個住宅物業的樓板 (不包括灰泥) 的厚度 (毫米)						
Tower 座數	Floor 樓層	Unit 單位	A	B	C	D	E	F	A	B	C	D	E	F
Tower 3 第3座	25/F 25樓		3300	3300	3300	3300	3300	3300	150, 175	150, 175	150, 175	150, 175, 250	150	150, 175, 250

The internal areas of the residential properties on the upper floors will generally be slightly larger than those on the lower floors because of the reducing thickness of the structural walls on the upper floors.

The internal ceiling height within part of the residential properties may vary due to structural, architectural and/or decoration design variations.

#### Notes:

1. The dimensions in the floor plans are all structural dimensions in millimetre and rounded off to the nearest integer.
2. For details of the noise mitigation measures, please refer to the Relevant Information section in this sales brochure.
3. Please refer to page 32 to page 33 of this sales brochure for legend of the terms and abbreviations shown in the floor plan.
4. Residential floors of the Phase are from 1/F to 28/F. There are no 4/F, 13/F, 14/F, 24/F in each Tower.

因住宅物業的較高樓層的結構牆的厚度遞減，較高樓層的內部面積，一般比較低樓層的內部面積稍大。部份單位之天花高度將會因應結構、建築及/或裝修設計上的需要而有差異。

#### 備註：

1. 樓面平面圖所列之尺寸為以毫米標示之建築結構尺寸，並以四捨五入至整數。
2. 有關噪音緩解措施之詳情，請參閱本售樓說明書的有關資料章節。
3. 樓面平面圖中顯示之名詞及簡稱之圖例請參閱本售樓說明書第32頁至第33頁。
4. 期數的住宅樓層由1樓至28樓。每座不設4樓、13樓、14樓及24樓。



# 11 FLOOR PLANS OF RESIDENTIAL PROPERTIES IN THE PHASE 期數的住宅物業的樓面平面圖

## Tower 3 | 26/F

### 第3座 | 26樓

Description 描述		The floor-to-floor height (refers to the height between the top surface of the structural slab of a floor and the top surface of the structural slab of its immediate upper floor) of each residential property (mm) 每個住宅物業的層與層之間的高度 (指該樓層之石屎地台面與上一層石屎地台面之高度距離) (毫米)						The thickness of the floor slabs (excluding plaster) of each residential property (mm) 每個住宅物業的樓板 (不包括灰泥) 的厚度 (毫米)						
Tower 座數	Floor 樓層	Unit 單位	A	B	C	D	E	F	A	B	C	D	E	F
Tower 3 第3座	26/F 26樓		3100, 3150, 3175, 3250, 3300, 3350, 3450, 3500, 3525, 3850	3150, 3225, 3300, 3500, 3550, 3575, 3850, 3875, 3900	3150, 3225, 3350, 3500, 3575, 3700, 3850	3150, 3225, 3300, 3500, 3575, 3850	3150, 3425, 3500, 3575, 3700, 3850	3500, 3575, 3850	150, 175, 200	150, 175	150, 175	150, 250	150, 250	150, 175, 250

The internal areas of the residential properties on the upper floors will generally be slightly larger than those on the lower floors because of the reducing thickness of the structural walls on the upper floors.

The internal ceiling height within part of the residential properties may vary due to structural, architectural and/or decoration design variations.

#### Notes:

1. The dimensions in the floor plans are all structural dimensions in millimetre and rounded off to the nearest integer.
2. For details of the noise mitigation measures, please refer to the Relevant Information section in this sales brochure.
3. Please refer to page 32 to page 33 of this sales brochure for legend of the terms and abbreviations shown in the floor plan.
4. Residential floors of the Phase are from 1/F to 28/F. There are no 4/F, 13/F, 14/F, 24/F in each Tower.

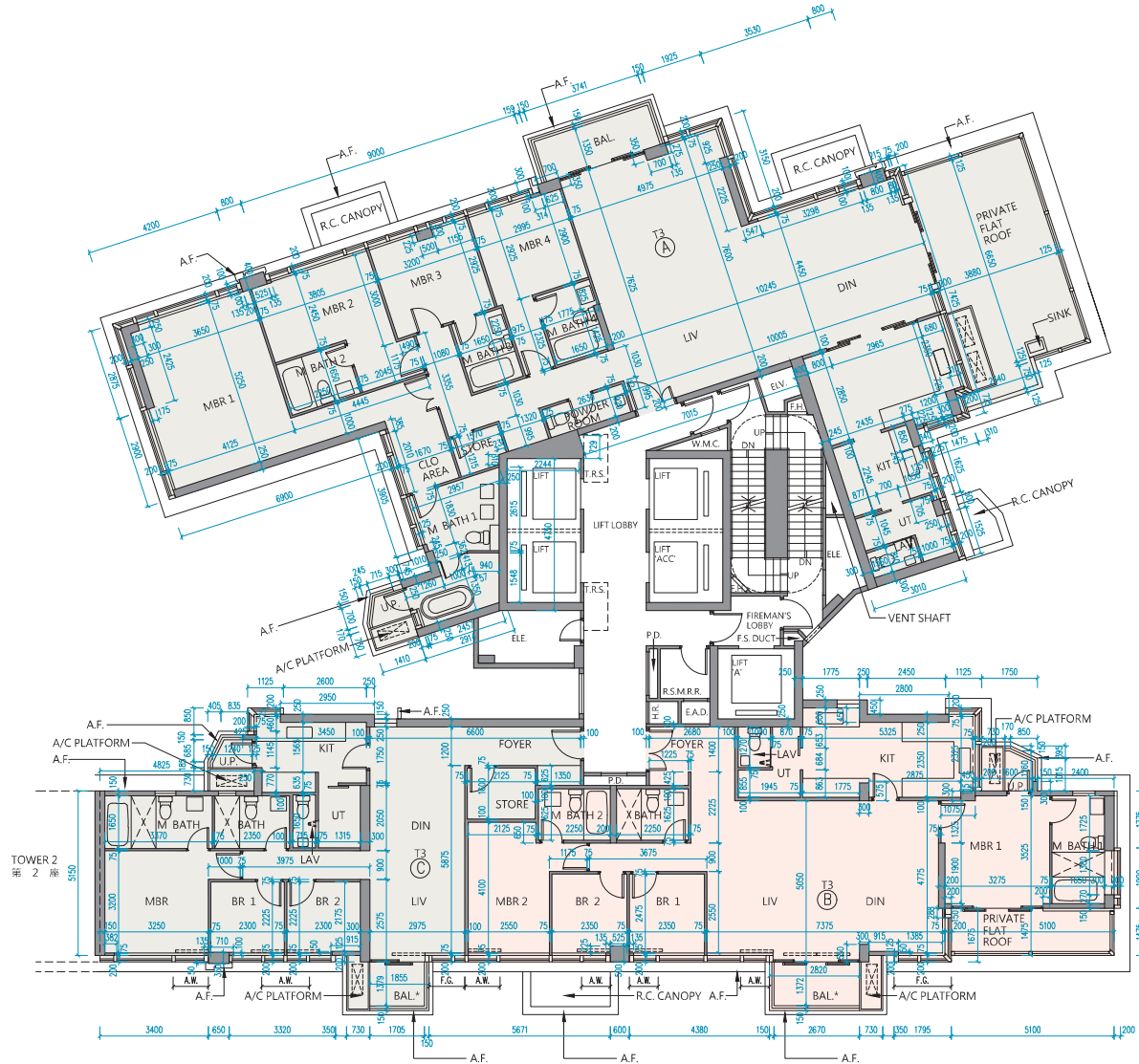
因住宅物業的較高樓層的結構牆的厚度遞減，較高樓層的內部面積，一般比較低樓層的內部面積稍大。部份單位之天花高度將會因應結構、建築及/或裝修設計上的需要而有差異。

#### 備註：

1. 樓面平面圖所列之尺寸為以毫米標示之建築結構尺寸，並以四捨五入至整數。
2. 有關噪音緩解措施之詳情，請參閱本售樓說明書的有關資料章節。
3. 樓面平面圖中顯示之名詞及簡稱之圖例請參閱本售樓說明書第32頁至第33頁。
4. 期數的住宅樓層由1樓至28樓。每座不設4樓、13樓、14樓及24樓。

# 11 FLOOR PLANS OF RESIDENTIAL PROPERTIES IN THE PHASE 期數的住宅物業的樓面平面圖

Tower 3 | 27/F  
第3座 | 27樓



# 11 FLOOR PLANS OF RESIDENTIAL PROPERTIES IN THE PHASE 期數的住宅物業的樓面平面圖

## Tower 3 | 27/F

### 第3座 | 27樓

Description 描述		The floor-to-floor height (refers to the height between the top surface of the structural slab of a floor and the top surface of the structural slab of its immediate upper floor) of each residential property (mm) 每個住宅物業的層與層之間的高度 (指該樓層之石屎地台面與上一層石屎地台面之高度距離) (毫米)			The thickness of the floor slabs (excluding plaster) of each residential property (mm) 每個住宅物業的樓板 (不包括灰泥) 的厚度 (毫米)			
Tower 座數	Floor 樓層	Unit 單位	A	B	C	A	B	C
Tower 3 第3座	27/F 27樓		3000, 3050, 3100, 3150, 3300, 3400, 3350, 3500, 3850, 3900	3150, 3350, 3425, 3500, 3650, 3850	3150, 3425, 3500, 3575, 3850	150, 175, 200, 225	150, 175, 200, 275	150, 175

The internal areas of the residential properties on the upper floors will generally be slightly larger than those on the lower floors because of the reducing thickness of the structural walls on the upper floors.

The internal ceiling height within part of the residential properties may vary due to structural, architectural and/or decoration design variations.

#### Notes:

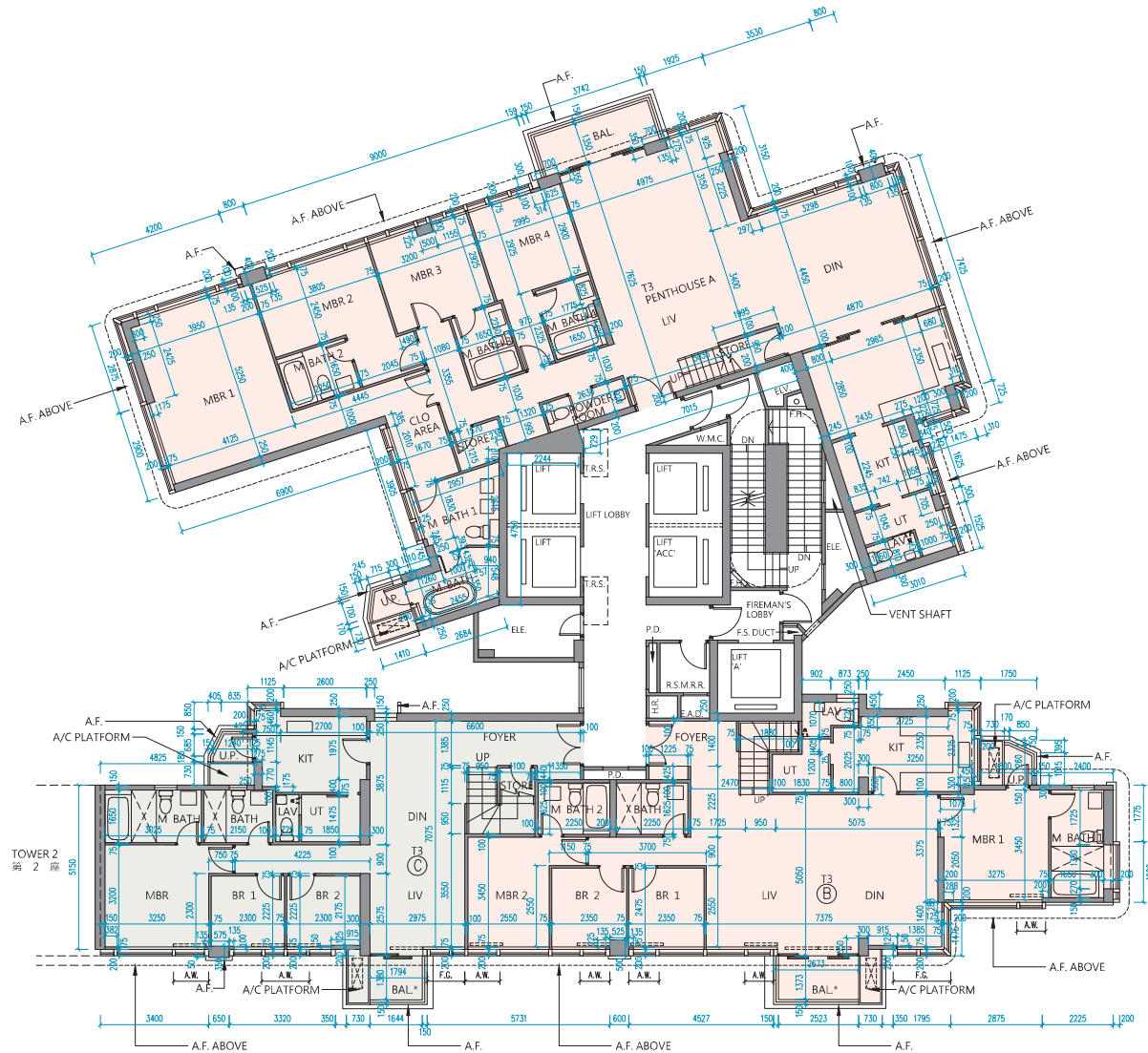
1. The dimensions in the floor plans are all structural dimensions in millimetre and rounded off to the nearest integer.
2. For details of the noise mitigation measures, please refer to the Relevant Information section in this sales brochure.
3. Please refer to page 32 to page 33 of this sales brochure for legend of the terms and abbreviations shown in the floor plan.
4. Residential floors of the Phase are from 1/F to 28/F. There are no 4/F, 13/F, 14/F, 24/F in each Tower.

因住宅物業的較高樓層的結構牆的厚度遞減，較高樓層的內部面積，一般比較低樓層的內部面積稍大。部份單位之天花高度將會因應結構、建築及/或裝修設計上的需要而有差異。

#### 備註：

1. 樓面平面圖所列之尺寸為以毫米標示之建築結構尺寸，並以四捨五入至整數。
2. 有關噪音緩解措施之詳情，請參閱本售樓說明書的有關資料章節。
3. 樓面平面圖中顯示之名詞及簡稱之圖例請參閱本售樓說明書第32頁至第33頁。
4. 期數的住宅樓層由1樓至28樓。每座不設4樓、13樓、14樓及24樓。

Tower 3 | 28/F  
第3座 | 28樓



# 11 FLOOR PLANS OF RESIDENTIAL PROPERTIES IN THE PHASE 期數的住宅物業的樓面平面圖

## Tower 3 | 28/F

### 第3座 | 28樓

Description 描述		The floor-to-floor height (refers to the height between the top surface of the structural slab of a floor and the top surface of the structural slab of its immediate upper floor) of each residential property (mm) 每個住宅物業的層與層之間的高度 (指該樓層之石屎地台面與上一層石屎地台面之高度距離) (毫米)			The thickness of the floor slabs (excluding plaster) of each residential property (mm) 每個住宅物業的樓板 (不包括灰泥) 的厚度 (毫米)			
Tower 座數	Floor 樓層	Unit 單位	A	B	C	A	B	C
Tower 3 第3座	28/F 28樓		3500, 3850, 3950, 4000, 4050, 4200, 4250	3500, 3575, 3700, 3850	3500, 3575, 3850, 4200	150, 200, 225, 250	150, 200, 225, 250	150, 200, 225

The internal areas of the residential properties on the upper floors will generally be slightly larger than those on the lower floors because of the reducing thickness of the structural walls on the upper floors.

The internal ceiling height within part of the residential properties may vary due to structural, architectural and/or decoration design variations.

#### Notes:

1. The dimensions in the floor plans are all structural dimensions in millimetre and rounded off to the nearest integer.
2. For details of the noise mitigation measures, please refer to the Relevant Information section in this sales brochure.
3. Please refer to page 32 to page 33 of this sales brochure for legend of the terms and abbreviations shown in the floor plan.
4. Residential floors of the Phase are from 1/F to 28/F. There are no 4/F, 13/F, 14/F, 24/F in each Tower.

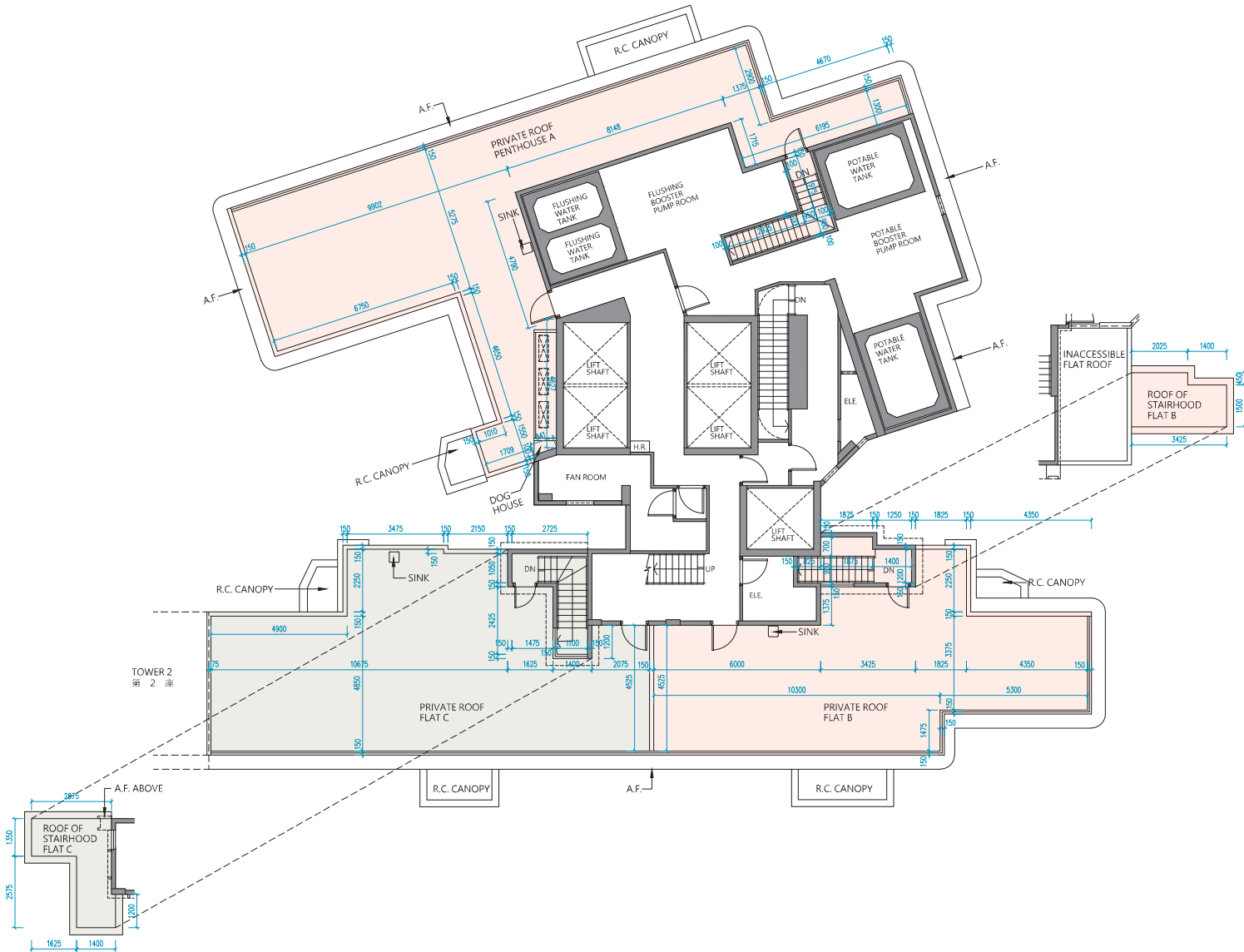
因住宅物業的較高樓層的結構牆的厚度遞減，較高樓層的內部面積，一般比較低樓層的內部面積稍大。部份單位之天花高度將會因應結構、建築及/或裝修設計上的需要而有差異。

#### 備註：

1. 樓面平面圖所列之尺寸為以毫米標示之建築結構尺寸，並以四捨五入至整數。
2. 有關噪音緩解措施之詳情，請參閱本售樓說明書的有關資料章節。
3. 樓面平面圖中顯示之名詞及簡稱之圖例請參閱本售樓說明書第32頁至第33頁。
4. 期數的住宅樓層由1樓至28樓。每座不設4樓、13樓、14樓及24樓。



### Tower 3 | Roof 第3座 | 天台



Scale: 0 5M/米  
比例: 1:500