

FLOOR PLANS OF RESIDENTIAL PROPERTIES IN THE DEVELOPMENT 11

發展項目的住宅物業的樓面平面圖

LEGEND OF TERMS AND ABBREVIATIONS USED ON FLOOR PLANS

樓面平面圖中所使用名詞及簡稱之圖例

A/C = Air-conditioner Platform = 冷氣機平台

A.D. = Air Duct = 通風槽

A.F. = Architectural Feature = 建築裝飾

BAL. = Balcony = 露台

BAL. & U.P. ABOVE = Balcony and Utility Platform Above = 露台及工作平台於上方

BAL. & U.P. COVER = Balcony and Utility Platform Cover = 露台及工作平台頂蓋

BATH = Bathroom = 浴室

BATH 1 = Bathroom 1 = 浴室1

BATH 2 = Bathroom 2 = 浴室2

B.R. = Bedroom = 睡房

B.R.1 = Bedroom 1 = 睡房 1

B.R.2 = Bedroom 2 = 睡房 2

CURTAIN WALL = 幕牆

DIN. = Dining Room = 飯廳

DN = Down = 落

ELECT. DUCT = Electrical Duct = 電管槽

ELV. = Extra Low Voltage Room = 弱電房

E.M.R. = Electrical Meter Room = 電錶房

FLUSHING WATER TANK & PUMP ROOM = 沖廁水水缸及泵房

H.R. = Hose Reel = 消防喉轆

INACCESSIBLE FLAT ROOF = 不可進入之平台

KIT. = Kitchen = 廚房

LIFT = 升降機

LIFT LOBBY = 升降機大堂

OVERRUN = 機廂槽

LIV. = Living Room = 客廳

M.B.R. = Master Bedroom = 主人睡房

M.L. AT H/L = Metal Louvre at High Level = 金屬百葉於高位

O.KIT. = Open Kitchen = 開放式廚房

P.D. = Pipe Duct = 管道槽

PLANTER = 花槽

PRIVATE FLAT ROOF = 私人平台

PRIVATE ROOF = 私人天台

RS & MRR = Refuse Storage and Material Recovery Room = 垃圾及物料回收房

STORE = 儲物室

ST-1 = Staircase 1 = 樓梯1

ST-2 = Staircase 2 = 樓梯2

ST-4 = Staircase 4 = 樓梯4

UP = 上

U.P. = Utility Platform = 工作平台

W.M.C. = Water Meter Cabinet = 水錶櫃

 = Air-conditioner = 冷氣機

Remarks:

1. There may be architectural features and/or exposed common pipes on external walls of some floors.
2. There may be communal pipes and/or mechanical and electrical services within balconies, utility platforms, air-conditioner platforms, flat roof and roofs of some residential units.
3. Some residential units have ceiling bulkheads and/or sunken slab at living/dining room, bedrooms, bathrooms, corridor and kitchen for air-conditioning system and/or other mechanical and electrical services.
4. Symbols of fittings and fitments shown on the floor plans, such as sink, water closets, shower, sink counter, etc. are architectural symbols retrieved from the latest approved general building plans and for general indication only.
5. Balconies, utility platforms and air-conditioner platforms are non-enclosed areas.

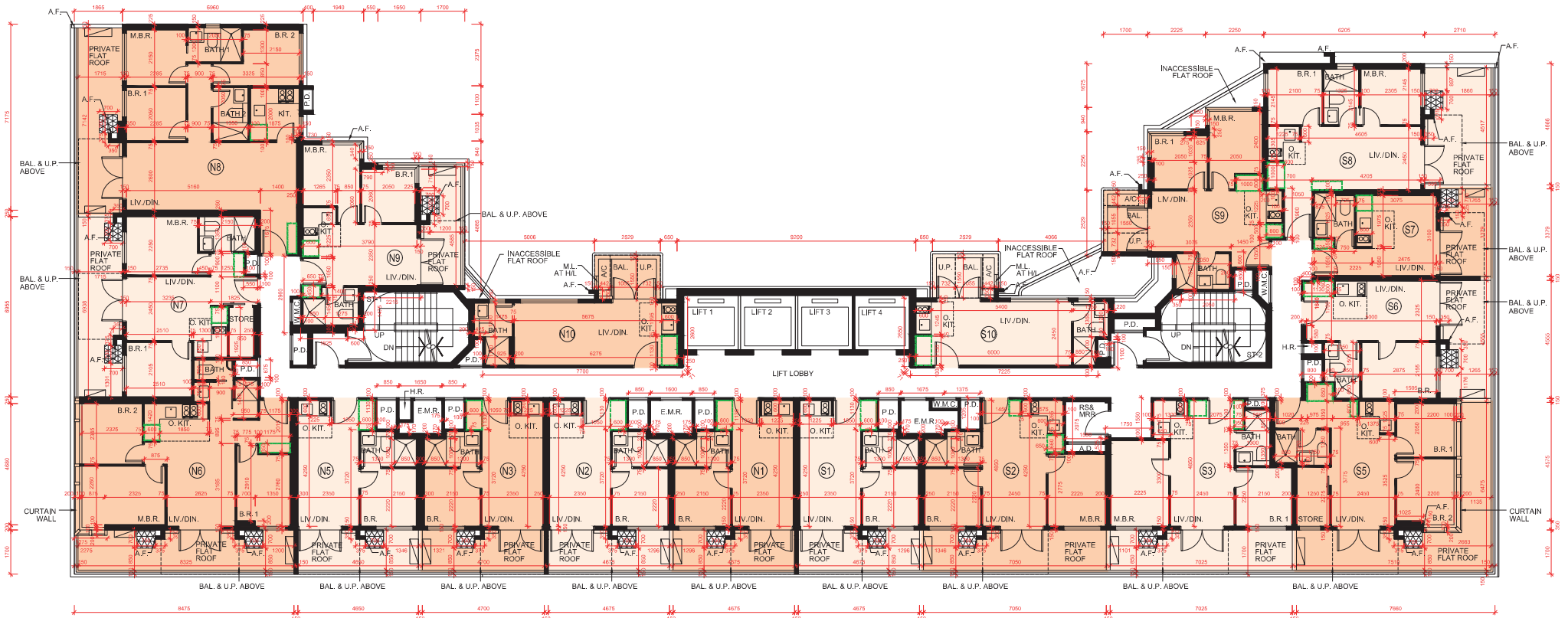
備註:

1. 部份樓層外牆或設有建築裝飾及/或外露喉管。
2. 部分住宅單位之露台、工作平台、冷氣機平台、平台及天台內或裝有公用喉管及/或機電設備。
3. 部分住宅單位的客廳/飯廳、睡房、浴室、走廊及廚房之天花板有假天花及/或跌級樓板，用以安裝空調及/或其他機電設備。
4. 平面圖上所顯示的形象裝置符號，例如洗滌盆、坐廁、花灑、洗滌盆櫃等乃摘自最新的經批准的建築圖則，只作一般性標誌。
5. 露台、工作平台及冷氣機平台為不可封閉的地方。


11 FLOOR PLANS OF RESIDENTIAL PROPERTIES IN THE DEVELOPMENT

發展項目的住宅物業的樓面平面圖

5/F
5樓



 COMMON AREA FOR MAINTENANCE
保養用途的公用地方

Scale 比例 :  5M/米

FLOOR PLANS OF RESIDENTIAL PROPERTIES IN THE DEVELOPMENT 11

發展項目的住宅物業的樓面平面圖

| Description of Residential Property 物業描述 | Floor 樓層 | Units 單位 | | | | | | | | | |
|---|-------------|----------|----------|----|----|----------|-----|----------|----|-----|--|
| | | N1 | N2 | N3 | N5 | N6 | N7 | N8 | N9 | N10 | |
| The thickness of the floor slabs (excluding plaster) of each residential property (mm) 每個住宅物業的樓板(不包括灰泥)的厚度(毫米) | 5/F 5樓 | | 175 | | | 150, 175 | 150 | 150, 175 | | 150 | |
| The floor-to-floor height (refers to the height between the top surface of the structural slab of a floor and the top surface of the structural slab of its immediate upper floor) of each residential property (mm) 每個住宅物業的層與層之間的高度(指該樓層之石屎地台面與上一層石屎地台面之高度距離)(毫米) | 5/F 5樓 | | | | | 3500 | | | | | |
| Description of Residential Property 物業描述 | Floor 樓層 | Units 單位 | | | | | | | | | |
| | | S1 | S2 | S3 | S5 | S6 | S7 | S8 | S9 | S10 | |
| The thickness of the floor slabs (excluding plaster) of each residential property (mm) 每個住宅物業的樓板(不包括灰泥)的厚度(毫米) | 5/F 5樓 | 175 | 150, 175 | | | | | 150 | | | |
| The floor-to-floor height (refers to the height between the top surface of the structural slab of a floor and the top surface of the structural slab of its immediate upper floor) of each residential property (mm) 每個住宅物業的層與層之間的高度(指該樓層之石屎地台面與上一層石屎地台面之高度距離)(毫米) | 5/F 5樓 | | | | | 3500 | | | | | |

The internal areas of the residential properties on the upper floors will generally be slightly larger than those on the lower floors because of the reducing thickness of the structural walls on the upper floors. 因住宅物業的較高樓層的結構牆的厚度遞減，較高樓層的內部面積，一般比較低樓層的內部面積稍大。

Notes:

- The dimensions in the floor plans are all structural dimension in millimeter.
- Please refer to page 19 of this sales brochure for legend of the terms and abbreviations shown in the floor plan above and the explanatory notes that are applicable thereto.
- There may be architectural features on external walls of some residential properties. For details, please refer to the latest approved building plans.
- The (- - - -) green dotted line within the unit indicates the approximate location of built-in full height cabinet to be provided with the residential property.
- 13/F, 14/F and 24/F are omitted. There are no Unit N4 and S4.

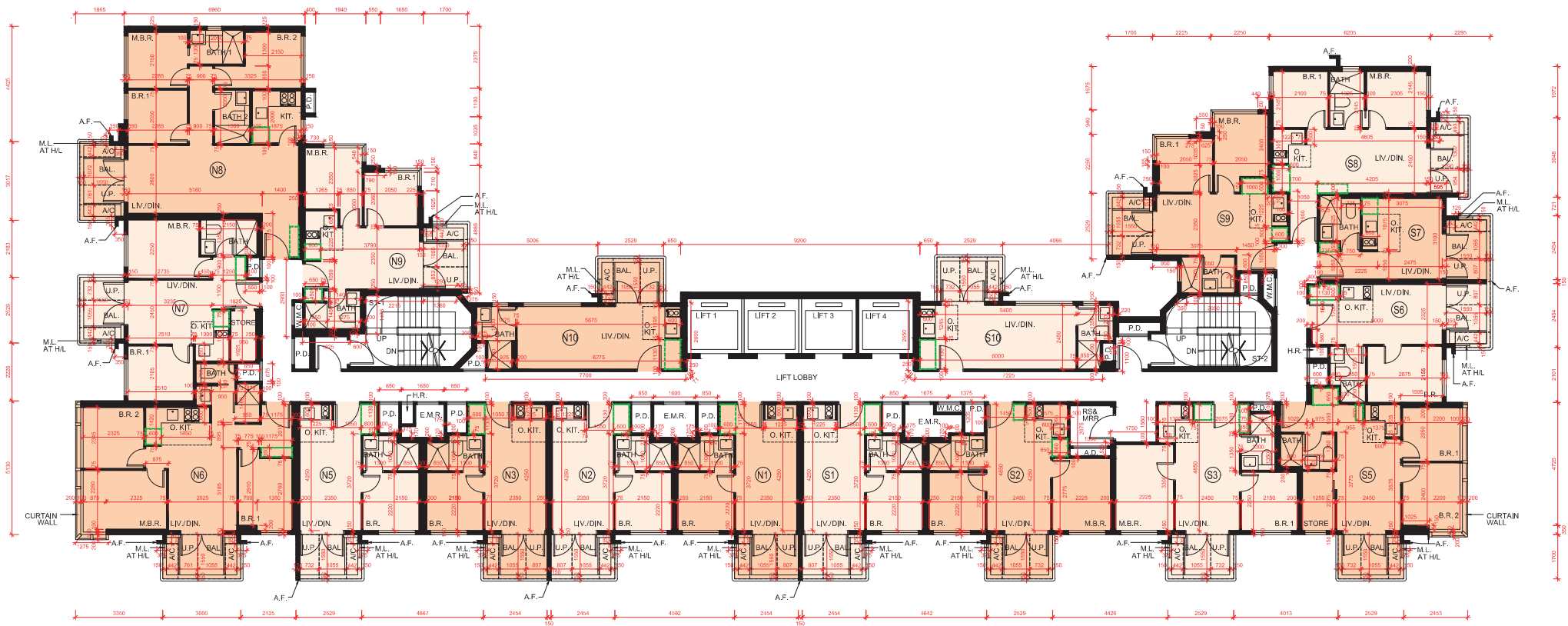
備註：

- 樓面平面圖所列之尺寸為以毫米標示之建築結構尺寸。
- 以上平面圖中顯示之名詞、簡稱及其適用的附註，請參閱本售樓說明書第19頁。
- 部分住宅物業外牆可能設有建築裝飾。詳情請參考最新批准之建築圖則。
- 單位內的(- - - -)綠色虛線顯示隨住宅物業提供的嵌入式全高櫃的大約位置。
- 不設13樓、14樓及24樓。不設N4及S4單位。

11 FLOOR PLANS OF RESIDENTIAL PROPERTIES IN THE DEVELOPMENT

發展項目的住宅物業的樓面平面圖

6/F-12/F, 15/F-23/F and 25/F-28/F
 6樓至12樓, 15樓至23樓及25樓至28樓



Scale 比例 : 0 1 2 3 4 5M/米

FLOOR PLANS OF RESIDENTIAL PROPERTIES IN THE DEVELOPMENT 11

發展項目的住宅物業的樓面平面圖

| Description of Residential Property 物業描述 | Floor 樓層 | Units 單位 | | | | | | | | |
|---|--|------------------------|----------|-----|----------|------------------|----------|----------|------------------------|------------------------------|
| | | N1 | N2 | N3 | N5 | N6 | N7 | N8 | N9 | N10 |
| The thickness of the floor slabs (excluding plaster) of each residential property (mm) 每個住宅物業的樓板(不包括灰泥)的厚度(毫米) | 6/F-12/F, 15/F-23/F and 25/F-27/F 6樓至12樓, 15樓至23樓及25樓至27樓 | 175 | | | 150, 175 | 150 | 150, 175 | 150 | | |
| | 28/F 28樓 | 150, 175 | | 175 | | 150, 200 | 150 | 150, 200 | 150 | 150, 200 |
| The floor-to-floor height (refers to the height between the top surface of the structural slab of a floor and the top surface of the structural slab of its immediate upper floor) of each residential property (mm) 每個住宅物業的層與層之間的高度(指該樓層之石屎地台面與上一層石屎地台面之高度距離)(毫米) | 6/F-12/F, 15/F-23/F and 25/F-27/F 6樓至12樓, 15樓至23樓及25樓至27樓 | 3500 | | | | | | | | |
| | 28/F 28樓 | 3500, 3575, 3750, 3800 | | | | 3500, 3575, 3800 | | | 3500, 3575, 3750, 3800 | 3500, 3550, 3575, 3750, 3800 |
| Description of Residential Property 物業描述 | Floor 樓層 | Units 單位 | | | | | | | | |
| | | S1 | S2 | S3 | S5 | S6 | S7 | S8 | S9 | S10 |
| The thickness of the floor slabs (excluding plaster) of each residential property (mm) 每個住宅物業的樓板(不包括灰泥)的厚度(毫米) | 6/F-12/F, 15/F-23/F and 25/F-27/F 6樓至12樓, 15樓至23樓及25樓至27樓 | 175 | 150, 175 | | 150 | | | | | |
| | 28/F 28樓 | 150, 175 | 150, 175 | | 150 | | | | | |
| The floor-to-floor height (refers to the height between the top surface of the structural slab of a floor and the top surface of the structural slab of its immediate upper floor) of each residential property (mm) 每個住宅物業的層與層之間的高度(指該樓層之石屎地台面與上一層石屎地台面之高度距離)(毫米) | 6/F-12/F, 15/F-23/F and 25/F-27/F 6樓至12樓, 15樓至23樓及25樓至27樓 | 3500 | | | | | | | | |
| | 28/F 28樓 | 3500, 3575, 3750, 3800 | | | | | | | | |

The internal areas of the residential properties on the upper floors will generally be slightly larger than those on the lower floors because of the reducing thickness of the structural walls on the upper floors. 因住宅物業的較高樓層的結構牆的厚度遞減, 較高樓層的內部面積, 一般比較低樓層的內部面積稍大。

Notes:

- The dimensions in the floor plans are all structural dimension in millimeter.
- Please refer to page 19 of this sales brochure for legend of the terms and abbreviations shown in the floor plan above and the explanatory notes that are applicable thereto.
- There may be architectural features on external walls of some residential properties. For details, please refer to the latest approved building plans.
- The (---) green dotted line within the unit indicates the approximate location of built-in full height cabinet to be provided with the residential property.
- There will be no grille between the air-conditioner platform and the balcony/utility platform in Unit S7.
- 13/F, 14/F and 24/F are omitted. There are no Unit N4 and S4.

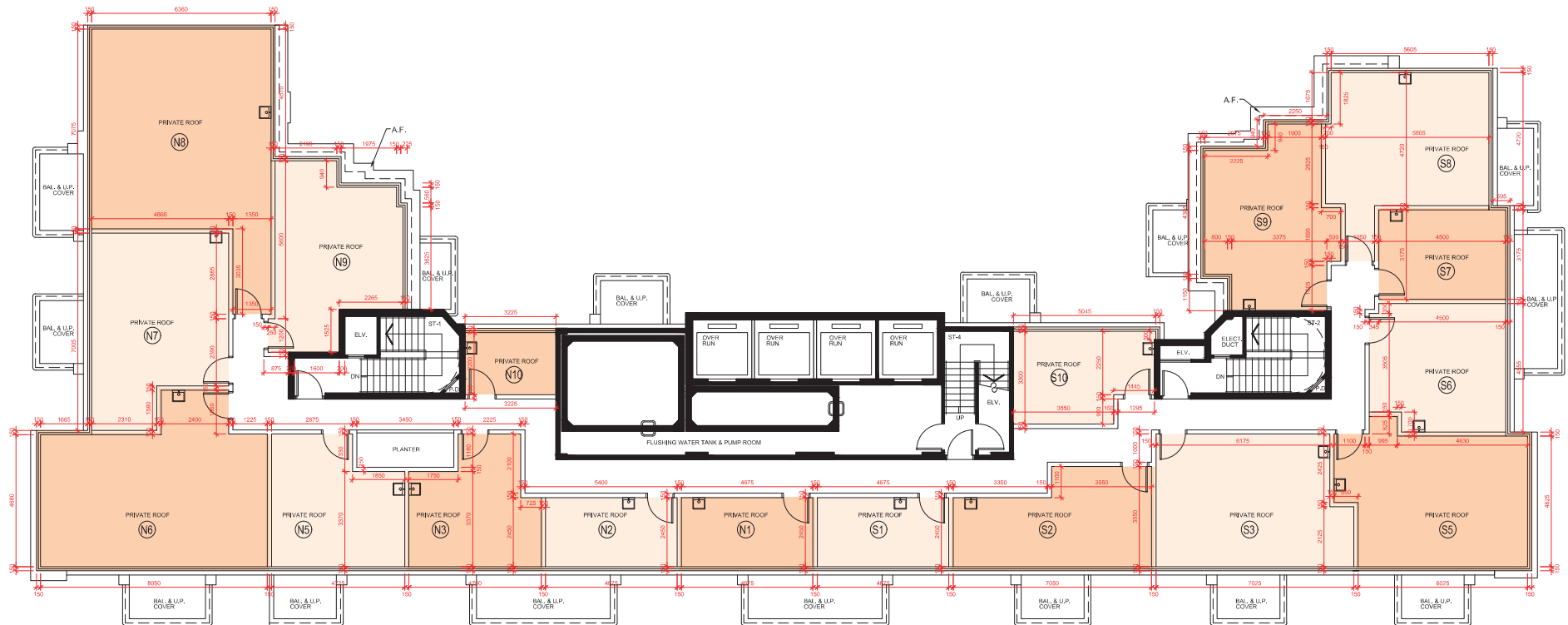
備註:

- 樓面平面圖所列之尺寸為以毫米標示之建築結構尺寸。
- 以上平面圖中顯示之名詞、簡稱及其適用的附註, 請參閱本售樓說明書第19頁。
- 部分住宅物業外牆可能設有建築裝飾。詳情請參考最新批准之建築圖則。
- 單位內的(---)綠色虛線顯示隨住宅物業提供的嵌入式全高櫃的大約位置。
- S7單位的冷氣機平台與露台/工作平台之間將不設圍欄。
- 不設13樓、14樓及24樓。不設N4及S4單位。

11 FLOOR PLANS OF RESIDENTIAL PROPERTIES IN THE DEVELOPMENT

發展項目的住宅物業的樓面平面圖

Roof Floor
天台



Scale 比例 : 0 1 2 3 4 5M/米

FLOOR PLANS OF RESIDENTIAL PROPERTIES IN THE DEVELOPMENT 11

發展項目的住宅物業的樓面平面圖

| Description of Residential Property 物業描述 | Floor 樓層 | Units 單位 | | | | | | | | | |
|---|------------------|-----------------------|----|----|----|----|----|----|----|-----|--|
| | | N1 | N2 | N3 | N5 | N6 | N7 | N8 | N9 | N10 | |
| The thickness of the floor slabs (excluding plaster) of each residential property (mm) 每個住宅物業的樓板(不包括灰泥)的厚度(毫米) | Roof Floor 天台 | Not Applicable 不適用 | | | | | | | | | |
| The floor-to-floor height (refers to the height between the top surface of the structural slab of a floor and the top surface of the structural slab of its immediate upper floor) of each residential property (mm) 每個住宅物業的層與層之間的高度(指該樓層之石屎地台面與上一層石屎地台面之高度距離)(毫米) | | Not Applicable 不適用 | | | | | | | | | |
| Description of Residential Property 物業描述 | Floor 樓層 | Units 單位 | | | | | | | | | |
| | | S1 | S2 | S3 | S5 | S6 | S7 | S8 | S9 | S10 | |
| The thickness of the floor slabs (excluding plaster) of each residential property (mm) 每個住宅物業的樓板(不包括灰泥)的厚度(毫米) | Roof Floor 天台 | Not Applicable 不適用 | | | | | | | | | |
| The floor-to-floor height (refers to the height between the top surface of the structural slab of a floor and the top surface of the structural slab of its immediate upper floor) of each residential property (mm) 每個住宅物業的層與層之間的高度(指該樓層之石屎地台面與上一層石屎地台面之高度距離)(毫米) | | Not Applicable 不適用 | | | | | | | | | |

The internal areas of the residential properties on the upper floors will generally be slightly larger than those on the lower floors because of the reducing thickness of the structural walls on the upper floors. 因住宅物業的較高樓層的結構牆的厚度遞減，較高樓層的內部面積，一般比較低樓層的內部面積稍大。

Notes:

- The dimensions in the floor plans are all structural dimension in millimeter.
- Please refer to page 19 of this sales brochure for legend of the terms and abbreviations shown in the floor plan above and the explanatory notes that are applicable thereto.
- There may be architectural features on external walls of some residential properties. For details, please refer to the latest approved building plans.
- 13/F, 14/F and 24/F are omitted. There are no Unit N4 and S4.

備註:

- 樓面平面圖所列之尺寸為以毫米標示之建築結構尺寸。
- 以上平面圖中顯示之名詞、簡稱及其適用的附註，請參閱本售樓說明書第19頁。
- 部分住宅物業外牆可能設有建築裝飾。詳情請參考最新批准之建築圖則。
- 不設13樓、14樓及24樓。不設N4及S4單位。