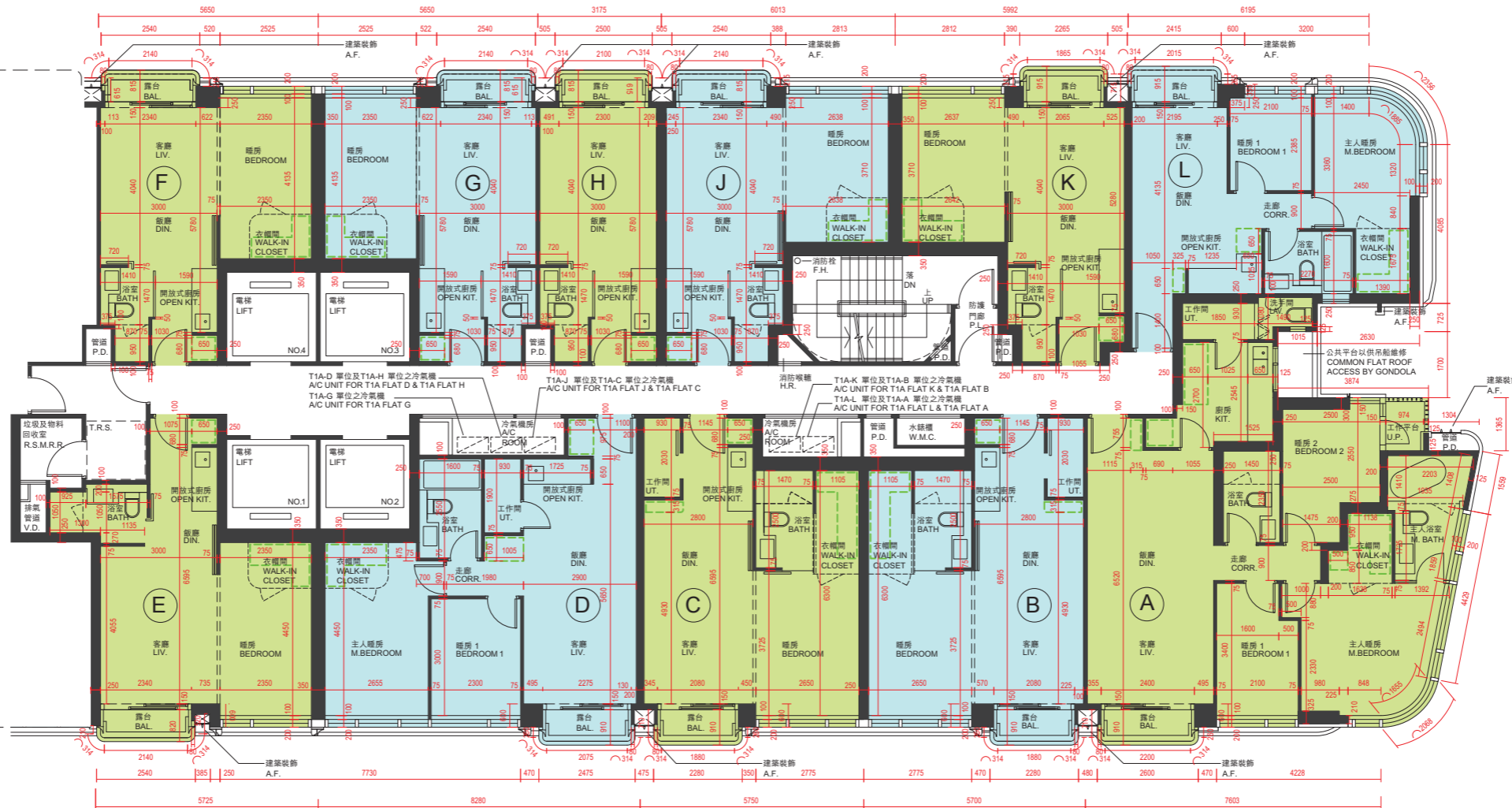


10 發展項目的住宅物業的樓面平面圖 FLOOR PLANS OF RESIDENTIAL PROPERTIES IN THE DEVELOPMENT

第1A座 TOWER 1A

2樓
2/F



第1B座 TOWER 1B

備註：平面圖所列數字為以毫米標示之建築結構尺寸。
Note: The dimensions of floor plans are all structural dimensions in millimeter.

比例尺 Scale 0米(m) 5米(m)

10 發展項目的住宅物業的樓面平面圖

FLOOR PLANS OF RESIDENTIAL PROPERTIES IN THE DEVELOPMENT

每個住宅物業 Each Residential Property	樓層 FLOOR	第1A座 TOWER 1A										
		單位 FLAT										
		A	B	C	D	E	F	G	H	J	K	L
樓板(不包括灰泥)的厚度(毫米) Thickness of Floor Slab (excluding plaster) (mm)	2樓 2/F	150, 175	150, 175	150	150	150	150, 175	150, 175	150, 175	150	150	150
層與層之間的高度(毫米) Floor-to-Floor Height (mm)		3385	3385	3385	3385	3385	3385	3385	3385	3385	3385	3385

因住宅物業的較高樓層的結構牆的厚度遞減，較高樓層的內部面積，一般比較低樓層的內部面積稍大。

The internal areas of the residential properties on the upper floors will generally be slightly larger than those on the lower floors because of the reducing thickness of the structural walls on the upper floors.

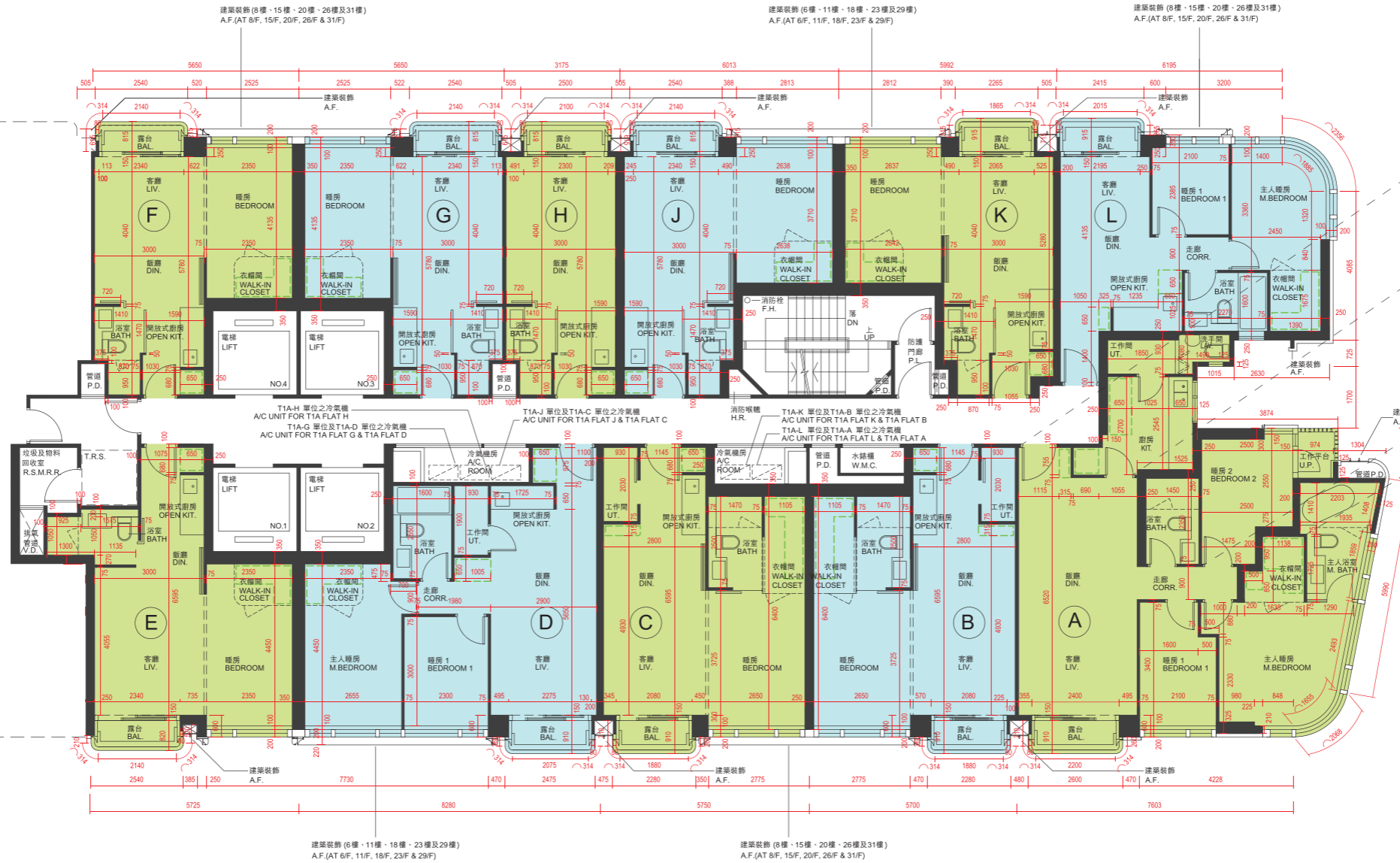
請參閱本售樓說明書第76頁為住宅物業的樓面平面圖而設之備註和圖例。

Please refer to page 76 of this sales brochure for the remarks and legends for the floor plans of residential properties.

10 發展項目的住宅物業的樓面平面圖 FLOOR PLANS OF RESIDENTIAL PROPERTIES IN THE DEVELOPMENT

第1A座 TOWER 1A

3樓、5樓至12樓、15樓至23樓、25樓至33樓
3/F, 5/F - 12/F, 15/F - 23/F and 25/F - 33/F



只適用於第1A座32樓
A單位
APPLICABLE TO
FLAT A ON 32/F OF
TOWER 1A ONLY

只適用於第1A座33樓
A單位
APPLICABLE TO
FLAT A ON 33/F OF
TOWER 1A ONLY

第1B座 TOWER 1B

備註：平面圖所列數字為以毫米標示之建築結構尺寸。
Note: The dimensions of floor plans are all structural dimensions in millimeter.



10 發展項目的住宅物業的樓面平面圖 FLOOR PLANS OF RESIDENTIAL PROPERTIES IN THE DEVELOPMENT

每個住宅物業 Each Residential Property	樓層 FLOOR	第1A座 TOWER 1A										
		單位 FLAT										
		A	B	C	D	E	F	G	H	J	K	L
樓板(不包括灰泥)的厚度(毫米) Thickness of Floor Slab (excluding plaster) (mm)	3樓、5樓至12樓、15樓至23樓、 25樓至32樓 3/F, 5/F - 12/F, 15/F - 23/F and 25/F - 32/F	150, 175	150, 175	150	150	150	150, 175	150, 175	150, 175	150	150	150
層與層之間的高度(毫米) Floor-to-Floor Height (mm)		3385	3385	3385	3385	3385	3385	3385	3385	3385	3385	3385
樓板(不包括灰泥)的厚度(毫米) Thickness of Floor Slab (excluding plaster) (mm)	33樓 33/F	150, 175, 215*, 265^	150, 175, 265^	150, 265^	150, 265^	150	150, 175	150, 175	150, 175	150	150	150
層與層之間的高度(毫米) Floor-to-Floor Height (mm)		3200, 3250, 3385, 3500, 3500*, 3500^, 3550^	3250, 3385, 3500, 3500^, 3550^	3385, 3500^	3385, 3500^	3385, 3500	3500	3500	3500	3500	3500	3450, 3500

因住宅物業的較高樓層的結構牆的厚度遞減，較高樓層的內部面積，一般比較低樓層的內部面積稍大。
The internal areas of the residential properties on the upper floors will generally be slightly larger than those on the lower floors because of the reducing thickness of the structural walls on the upper floors.

請參閱本售樓說明書第76頁為住宅物業的樓面平面圖而設之備註和圖例。

Please refer to page 76 of this sales brochure for the remarks and legends for the floor plans of residential properties.

* 包括結構層上之混凝土填充層（65毫米）

* Inclusive of 65mm concrete mass fill on slab

^ 包括結構層上之混凝土填充層（115毫米）

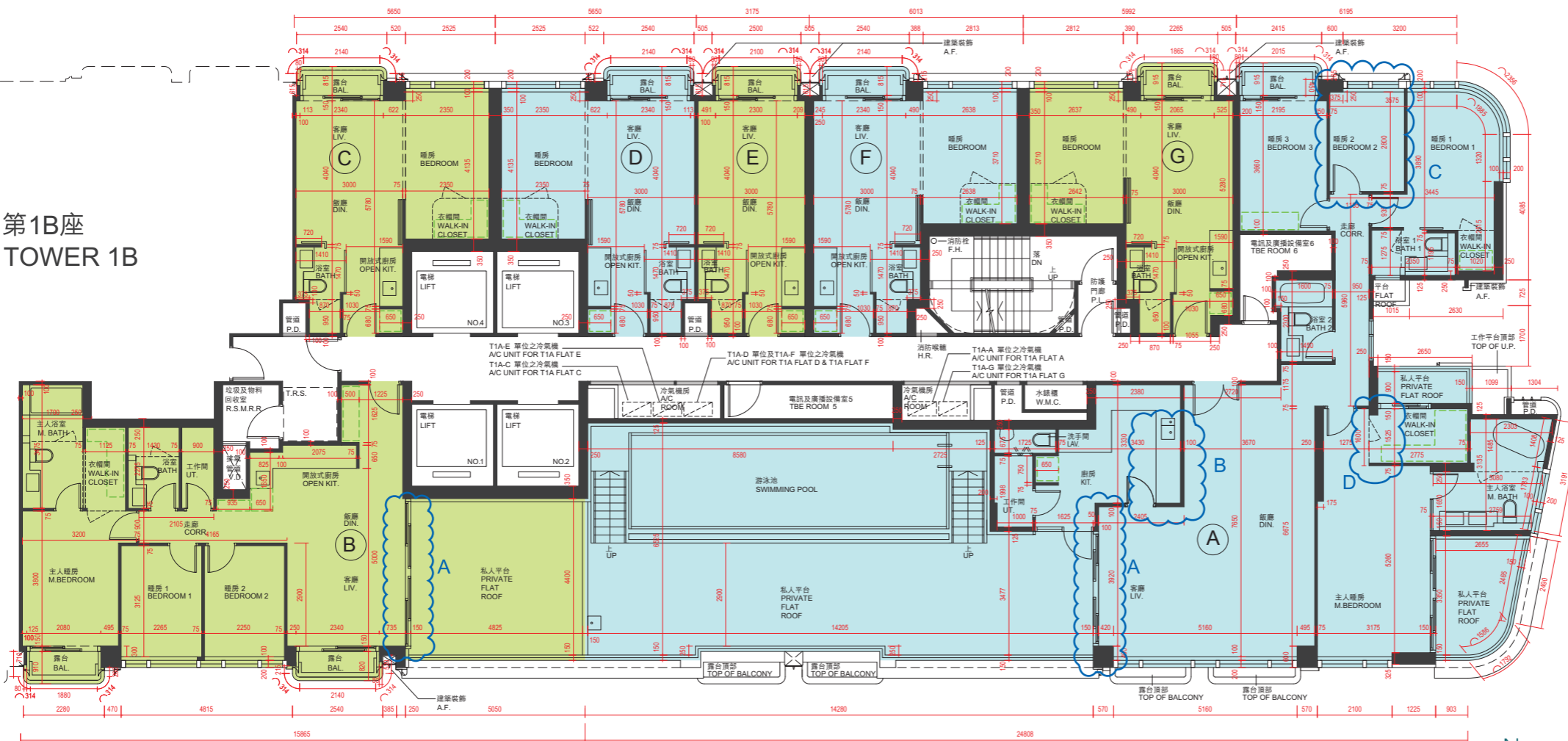
^ Inclusive of 115mm concrete mass fill on slab

10 發展項目的住宅物業的樓面平面圖 FLOOR PLANS OF RESIDENTIAL PROPERTIES IN THE DEVELOPMENT

第1A座 TOWER 1A

35樓
35/F

第1B座 TOWER 1B



備註：平面圖所列數字為以毫米標示之建築結構尺寸。
Note: The dimensions of floor plans are all structural dimensions in millimeter.

比例尺 Scale 0米(m) 5米(m)

第1A座35樓A及B單位在發展項目落成後進行《建築物條例》下的小型工程或加建工程而有所改動。該等改動的大概位置已於本樓面平面圖中作標示。

Flats A and B on 35/F of Tower 1A have been altered by way of minor works or alterations and additions works under the Buildings Ordinance after completion of the Development. The approximate locations of alterations are indicated on this floor plan.

第1A座35樓A單位的改動工程包括：

- (A) 原玻璃趟門被移除並以玻璃摺門取代。
- (B) 原廚房的間隔牆被移除並以不同尺寸的弧形玻璃間隔牆取代。
- (C) 原睡房2之間隔牆及門被移除。
- (D) 原主人睡房的衣帽間玻璃間隔及掩門被移除。

第1A座35樓B單位的改動工程包括：

- (A) 原玻璃趟門被移除並以玻璃摺門取代。

Alteration works for Flat A on 35/F of Tower 1A include:

- (A) Original glass sliding doors was demolished and replaced by glass bi-folding doors.
- (B) Original partitions walls of kitchen were demolished and replaced by curved glass partition in different dimensions.
- (C) Original partition walls and door of Bedroom 2 were removed.
- (D) Original glass partition and swing door of walk-in closet in master bedroom were removed.

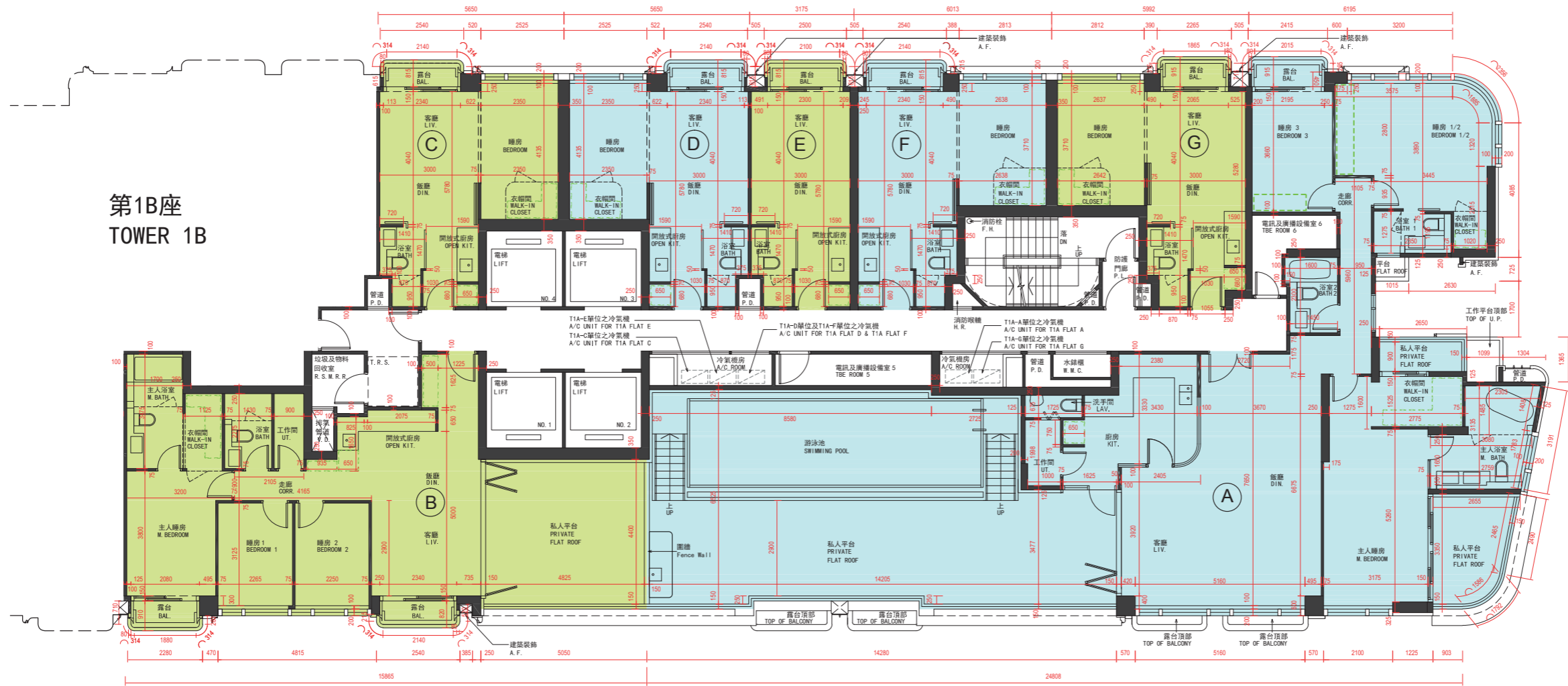
Alteration works for Flat B on 35/F of Tower 1A include:

- (A) Original glass sliding doors was demolished and replaced by glass bi-folding doors.

10 發展項目的住宅物業的樓面平面圖 FLOOR PLANS OF RESIDENTIAL PROPERTIES IN THE DEVELOPMENT

第1A座 TOWER 1A

35樓之現狀間隔平面圖
35/F AS-IS FLOOR PLAN



第1B座
TOWER 1B

備註：平面圖所列數字為以毫米標示之建築結構尺寸。
Note: The dimensions of floor plans are all structural dimensions in millimeter.

比例尺 Scale 0米(m) 5米(m)

10 發展項目的住宅物業的樓面平面圖

FLOOR PLANS OF RESIDENTIAL PROPERTIES IN THE DEVELOPMENT

每個住宅物業 Each Residential Property	樓層 FLOOR	第1A座 TOWER 1A						
		單位 FLAT						
		A	B	C	D	E	F	G
樓板(不包括灰泥)的厚度(毫米) Thickness of Floor Slab (excluding plaster) (mm)	35樓 35/F	150, 175	150	150	150, 175	150, 175	150	150
層與層之間的高度(毫米) Floor-to-Floor Height (mm)		3555	3555	3555	3555	3555	3555	3555

因住宅物業的較高樓層的結構牆的厚度遞減，較高樓層的內部面積，一般比較低樓層的內部面積稍大。

The internal areas of the residential properties on the upper floors will generally be slightly larger than those on the lower floors because of the reducing thickness of the structural walls on the upper floors.

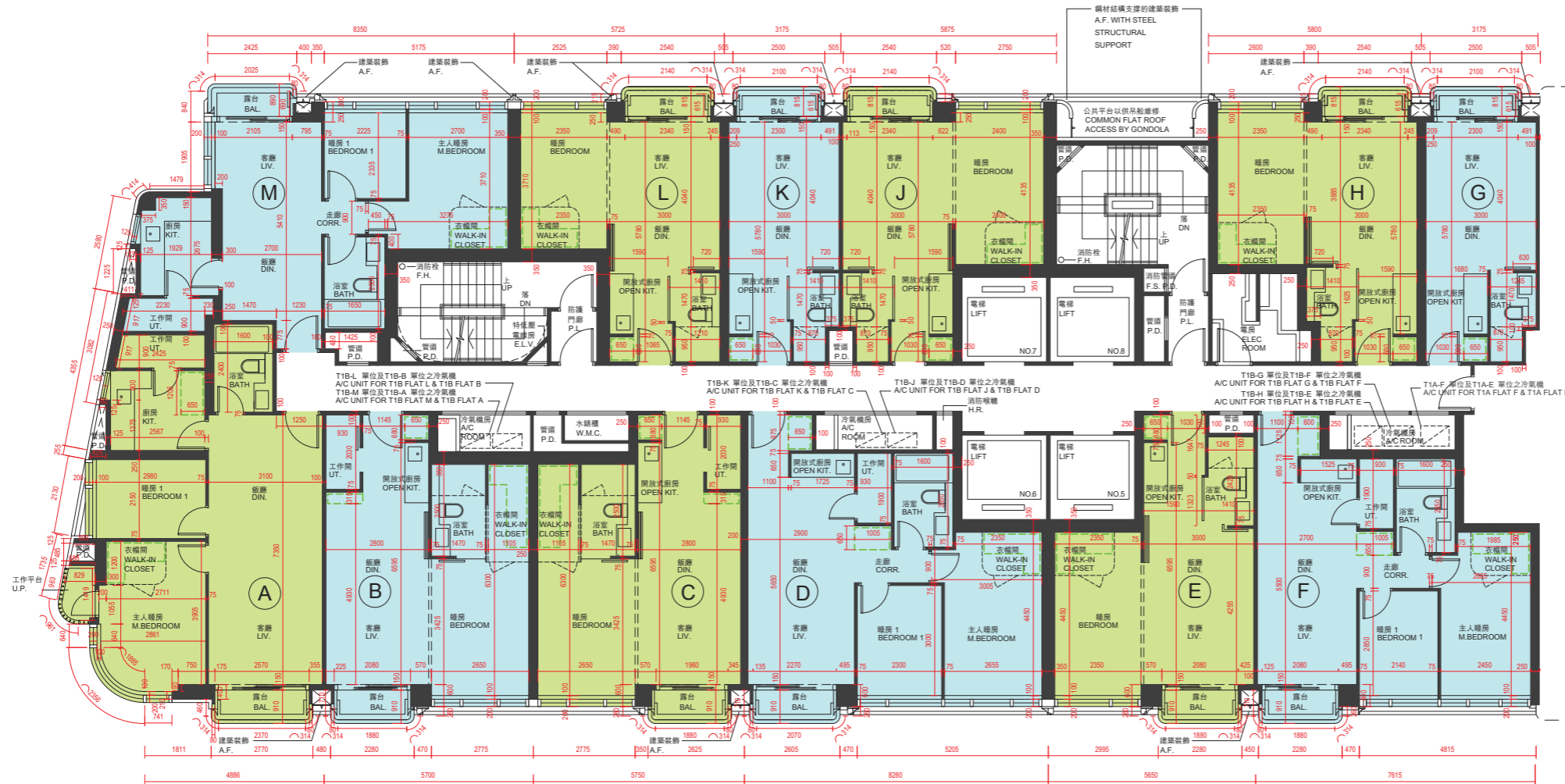
請參閱本售樓說明書第76頁為住宅物業的樓面平面圖而設之備註和圖例。

Please refer to page 76 of this sales brochure for the remarks and legends for the floor plans of residential properties.

10 發展項目的住宅物業的樓面平面圖 FLOOR PLANS OF RESIDENTIAL PROPERTIES IN THE DEVELOPMENT

第1B座 TOWER 1B

2樓
2/F



第1A座 TOWER 1A



備註：平面圖所列數字為以毫米標示之建築結構尺寸。
Note : The dimensions of floor plans are all structural dimensions in millimeter.

比例尺 Scale 0米(m) 5米(m)

10 發展項目的住宅物業的樓面平面圖

FLOOR PLANS OF RESIDENTIAL PROPERTIES IN THE DEVELOPMENT

每個住宅物業 Each Residential Property	樓層 FLOOR	第1B座 TOWER 1B											
		單位 FLAT											
		A	B	C	D	E	F	G	H	J	K	L	M
樓板(不包括灰泥)的厚度(毫米) Thickness of Floor Slab (excluding plaster) (mm)	2樓 2/F	150, 175	150, 175	150	150	150, 175	150, 175	175	150	150, 175	150, 175	150	150
層與層之間的高度(毫米) Floor-to-Floor Height (mm)		3385	3385	3385	3385	3385	3385	3385	3385	3385	3385	3385	3385

因住宅物業的較高樓層的結構牆的厚度遞減，較高樓層的內部面積，一般比較低樓層的內部面積稍大。

The internal areas of the residential properties on the upper floors will generally be slightly larger than those on the lower floors because of the reducing thickness of the structural walls on the upper floors.

請參閱本售樓說明書第76頁為住宅物業的樓面平面圖而設之備註和圖例。

Please refer to page 76 of this sales brochure for the remarks and legends for the floor plans of residential properties.

10 發展項目的住宅物業的樓面平面圖

FLOOR PLANS OF RESIDENTIAL PROPERTIES IN THE DEVELOPMENT

每個住宅物業 Each Residential Property	樓層 FLOOR	第1B座 TOWER 1B											
		單位 FLAT											
		A	B	C	D	E	F	G	H	J	K	L	M
樓板(不包括灰泥)的厚度(毫米) Thickness of Floor Slab (excluding plaster) (mm)	3樓、5樓至12樓、 15樓至23樓、25樓至32樓 3/F, 5/F - 12/F, 15/F - 23/F and 25/F - 32/F	150, 175	150, 175	150	150	150, 175	150, 175	175	150	150, 175	150, 175	150	150
層與層之間的高度(毫米) Floor-to-Floor Height (mm)		3385	3385	3385	3385	3385	3385	3385	3385	3385	3385	3385	3385
樓板(不包括灰泥)的厚度(毫米) Thickness of Floor Slab (excluding plaster) (mm)	33樓 33/F	150, 175	150, 175	150	150	150, 175	150, 175	175	150	150, 175	150, 175	150	150
層與層之間的高度(毫米) Floor-to-Floor Height (mm)		3200, 3385, 3500	3200, 3500	3200, 3450, 3500	3500	3500	3200, 3250, 3450, 3500	3500	3500	3500	3500	3500	3500

因住宅物業的較高樓層的結構牆的厚度遞減，較高樓層的內部面積，一般比較低樓層的內部面積稍大。

The internal areas of the residential properties on the upper floors will generally be slightly larger than those on the lower floors because of the reducing thickness of the structural walls on the upper floors.

請參閱本售樓說明書第76頁為住宅物業的樓面平面圖而設之備註和圖例。

Please refer to page 76 of this sales brochure for the remarks and legends for the floor plans of residential properties.

10 發展項目的住宅物業的樓面平面圖 FLOOR PLANS OF RESIDENTIAL PROPERTIES IN THE DEVELOPMENT

第1B座 TOWER 1B

35樓
35/F



第1A座 TOWER 1A

第1B座35樓A單位在發展項目落成後進行《建築物條例》下的小型工程或加建工程而有所改動。該等改動的大概位置已於本樓面平面圖中作標示。

Flat A on 35/F of Tower 1B has been altered by way of minor works or alterations and additions works under the Buildings Ordinance after completion of the Development. The approximate location of alterations is indicated on this floor plan.

第1B座35樓A單位的改動工程包括：

(A) 原玻璃趟門被移除並以玻璃摺門取代。Alteration works for Flat A on 35/F of Tower 1B include:

(A) Original glass sliding doors was demolished and replaced by glass bi-folding doors.

備註：平面圖所列數字為以毫米標示之建築結構尺寸。
Note : The dimensions of floor plans are all structural dimensions in millimeter.

比例尺 Scale 0米(m) 5米(m)

10 發展項目的住宅物業的樓面平面圖 FLOOR PLANS OF RESIDENTIAL PROPERTIES IN THE DEVELOPMENT

第1B座 TOWER 1B

35樓之現狀間隔平面圖
35/F AS-IS FLOOR PLAN



第1A座
TOWER 1A

備註：平面圖所列數字為以毫米標示之建築結構尺寸。
Note : The dimensions of floor plans are all structural dimensions in millimeter.

比例尺 Scale 0米(m) 5米(m)

10 發展項目的住宅物業的樓面平面圖

FLOOR PLANS OF RESIDENTIAL PROPERTIES IN THE DEVELOPMENT

每個住宅物業 Each Residential Property	樓層 FLOOR	第1B座 TOWER 1B								
		單位 FLAT								
		A	B	C	D	E	F	G	H	J
樓板(不包括灰泥)的厚度(毫米) Thickness of Floor Slab (excluding plaster) (mm)	35樓 35/F	150, 175	150	150	150	150	150	150	150	150
層與層之間的高度(毫米) Floor-to-Floor Height (mm)		3555	3555	3555	3555	3555	3555	3555	3555	3555

因住宅物業的較高樓層的結構牆的厚度遞減，較高樓層的內部面積，一般比較低樓層的內部面積稍大。

The internal areas of the residential properties on the upper floors will generally be slightly larger than those on the lower floors because of the reducing thickness of the structural walls on the upper floors.

請參閱本售樓說明書第76頁為住宅物業的樓面平面圖而設之備註和圖例。

Please refer to page 76 of this sales brochure for the remarks and legends for the floor plans of residential properties.

10 發展項目的住宅物業的樓面平面圖 FLOOR PLANS OF RESIDENTIAL PROPERTIES IN THE DEVELOPMENT

低座A座 MANSION A

地下
G/F



低座A座地下A及B單位在發展項目落成後進行《建築物條例》下的小型工程或加建工程而有所改動。該等改動的大概位置已於本樓面平面圖中作標示。

Flats A and B on G/F of Mansion A have been altered by way of minor works or alterations and additions under the Buildings Ordinance after completion of the Development. The approximate locations of alterations are indicated on this floor plan.

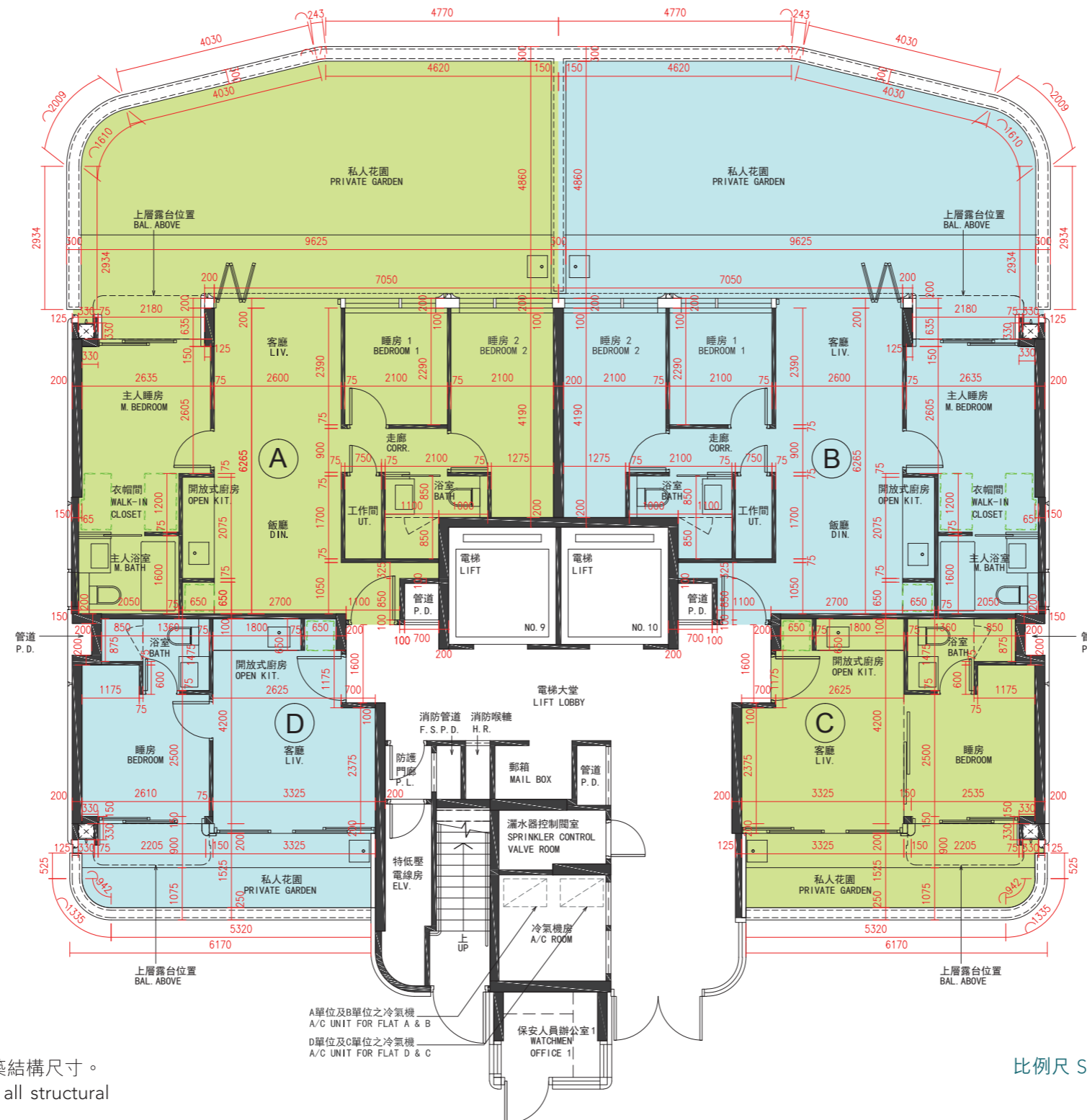
低座A座地下A及B單位的改動工程包括：
(A)原玻璃趟門被移除並以玻璃摺門取代。
Flats A and B on G/F of Mansion A include:
(A) Original glass sliding doors was demolished and replaced by glass bi-folding doors.

備註： 平面圖所列數字為以毫米標示之建築結構尺寸。
Note: The dimensions of floor plans are all structural dimensions in millimeter.

10 發展項目的住宅物業的樓面平面圖 FLOOR PLANS OF RESIDENTIAL PROPERTIES IN THE DEVELOPMENT

低座A座 MANSION A

地下之現狀間隔平面圖
G/F AS-IS FLOOR PLAN



備註： 平面圖所列數字為以毫米標示之建築結構尺寸。
Note: The dimensions of floor plans are all structural dimensions in millimeter.

比例尺 Scale 0米(m) 5米(m)

10 發展項目的住宅物業的樓面平面圖

FLOOR PLANS OF RESIDENTIAL PROPERTIES IN THE DEVELOPMENT

每個住宅物業 Each Residential Property	樓層 FLOOR	低座A座 MANSION A			
		單位 FLAT			
		A	B	C	D
樓板(不包括灰泥)的厚度(毫米) Thickness of Floor Slab (excluding plaster) (mm)	地下 G/F	175	175	175	175
層與層之間的高度(毫米) Floor-to-Floor Height (mm)		3500	3500	3500	3500

因住宅物業的較高樓層的結構牆的厚度遞減，較高樓層的內部面積，一般比較低樓層的內部面積稍大。

The internal areas of the residential properties on the upper floors will generally be slightly larger than those on the lower floors because of the reducing thickness of the structural walls on the upper floors.

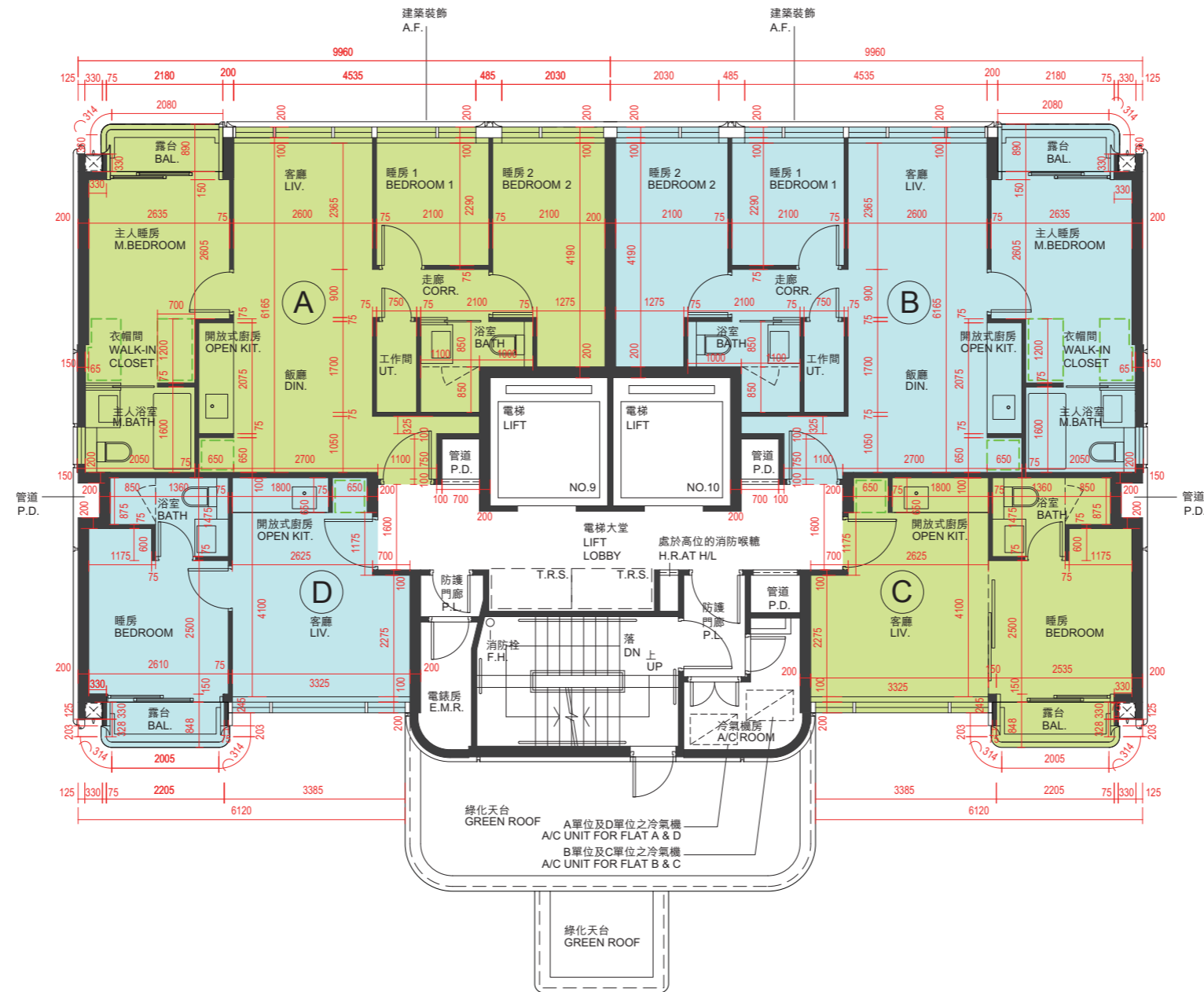
請參閱本售樓說明書第76頁為住宅物業的樓面平面圖而設之備註和圖例。

Please refer to page 76 of this sales brochure for the remarks and legends for the floor plans of residential properties.

10 發展項目的住宅物業的樓面平面圖 FLOOR PLANS OF RESIDENTIAL PROPERTIES IN THE DEVELOPMENT

低座A座 MANSION A

1樓
1/F



備註： 平面圖所列數字為以毫米標示之建築結構尺寸。
Note: The dimensions of floor plans are all structural dimensions in millimeter.

比例尺 Scale 0米(m) 5米(m)

10 發展項目的住宅物業的樓面平面圖

FLOOR PLANS OF RESIDENTIAL PROPERTIES IN THE DEVELOPMENT

每個住宅物業 Each Residential Property	樓層 FLOOR	低座A座 MANSION A			
		單位 FLAT			
		A	B	C	D
樓板(不包括灰泥)的厚度(毫米) Thickness of Floor Slab (excluding plaster) (mm)	1樓 1/F	175	175	175	175
層與層之間的高度(毫米) Floor-to-Floor Height (mm)		3500	3500	3500	3500

因住宅物業的較高樓層的結構牆的厚度遞減，較高樓層的內部面積，一般比較低樓層的內部面積稍大。

The internal areas of the residential properties on the upper floors will generally be slightly larger than those on the lower floors because of the reducing thickness of the structural walls on the upper floors.

請參閱本售樓說明書第76頁為住宅物業的樓面平面圖而設之備註和圖例。

Please refer to page 76 of this sales brochure for the remarks and legends for the floor plans of residential properties.

10 發展項目的住宅物業的樓面平面圖

FLOOR PLANS OF RESIDENTIAL PROPERTIES IN THE DEVELOPMENT

每個住宅物業 Each Residential Property	樓層 FLOOR	低座A座 MANSION A			
		單位 FLAT			
		A	B	C	D
樓板(不包括灰泥)的厚度(毫米) Thickness of Floor Slab (excluding plaster) (mm)	2樓至3樓 2/F and 3/F	175	175	175	175
層與層之間的高度(毫米) Floor-to-Floor Height (mm)		3500	3500	3500	3500

因住宅物業的較高樓層的結構牆的厚度遞減，較高樓層的內部面積，一般比較低樓層的內部面積稍大。

The internal areas of the residential properties on the upper floors will generally be slightly larger than those on the lower floors because of the reducing thickness of the structural walls on the upper floors.

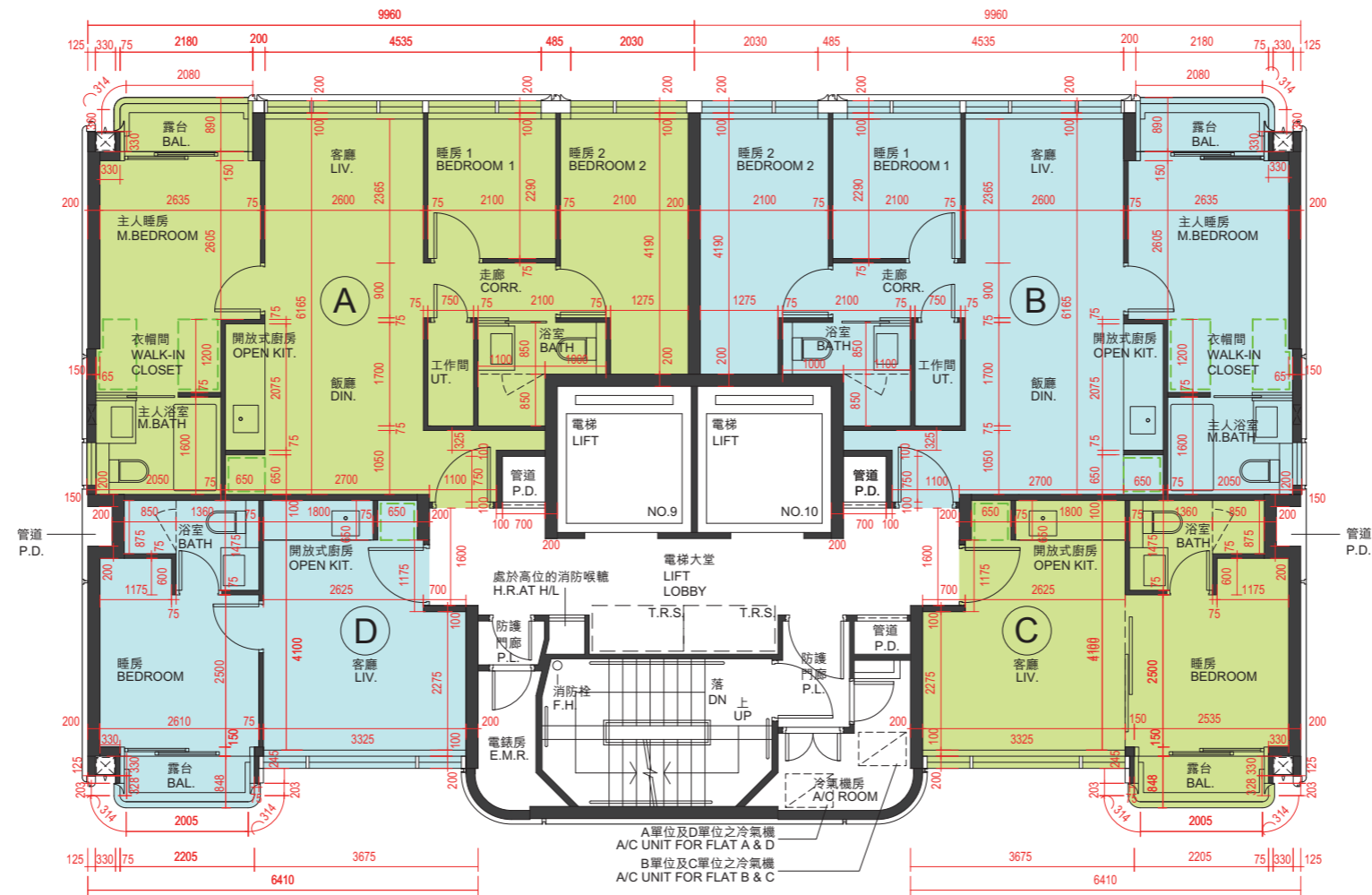
請參閱本售樓說明書第76頁為住宅物業的樓面平面圖而設之備註和圖例。

Please refer to page 76 of this sales brochure for the remarks and legends for the floor plans of residential properties.

10 發展項目的住宅物業的樓面平面圖 FLOOR PLANS OF RESIDENTIAL PROPERTIES IN THE DEVELOPMENT

低座A座 MANSION A

5樓
5/F



備註：平面圖所列數字為以毫米標示之建築結構尺寸。
 Note : The dimensions of floor plans are all structural dimensions in millimeter.

比例尺 Scale 0米(m) 5米(m)

10 發展項目的住宅物業的樓面平面圖

FLOOR PLANS OF RESIDENTIAL PROPERTIES IN THE DEVELOPMENT

每個住宅物業 Each Residential Property	樓層 FLOOR	低座A座 MANSION A			
		單位 FLAT			
		A	B	C	D
樓板(不包括灰泥)的厚度(毫米) Thickness of Floor Slab (excluding plaster) (mm)	5樓 5/F	175	175	175	175
層與層之間的高度(毫米) Floor-to-Floor Height (mm)		3500	3500	3500	3500

因住宅物業的較高樓層的結構牆的厚度遞減，較高樓層的內部面積，一般比較低樓層的內部面積稍大。

The internal areas of the residential properties on the upper floors will generally be slightly larger than those on the lower floors because of the reducing thickness of the structural walls on the upper floors.

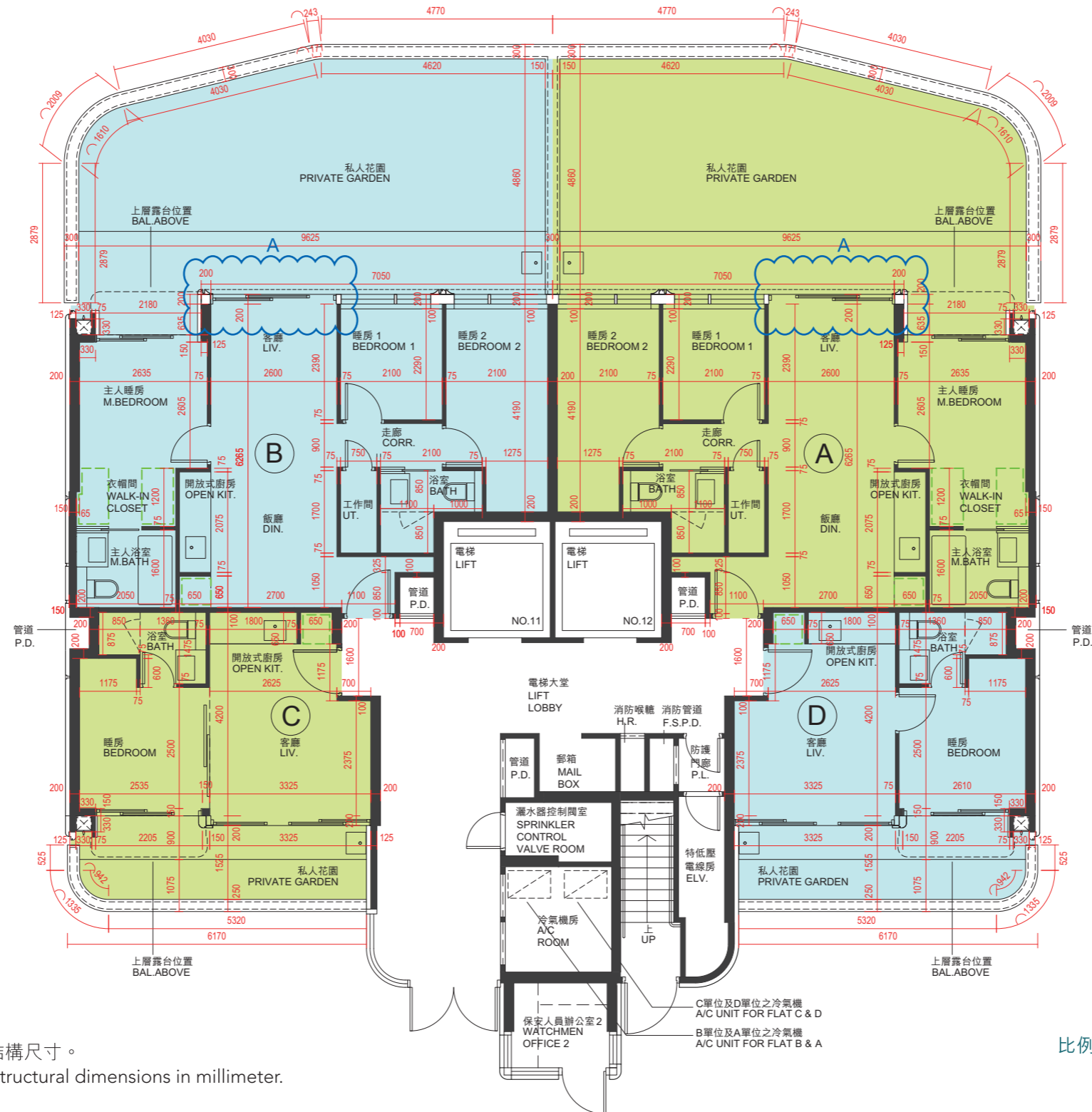
請參閱本售樓說明書第76頁為住宅物業的樓面平面圖而設之備註和圖例。

Please refer to page 76 of this sales brochure for the remarks and legends for the floor plans of residential properties.

10 發展項目的住宅物業的樓面平面圖 FLOOR PLANS OF RESIDENTIAL PROPERTIES IN THE DEVELOPMENT

低座B座 MANSION B

地下
G/F



低座B座地下A及B單位在發展項目落成後進行《建築物條例》下的小型工程或加建工程而有所改動。該等改動的大概位置已於本樓面平面圖中作標示。

Flats A and B on G/F of Mansion B have been altered by way of minor works or alterations and additions works under the Buildings Ordinance after completion of the Development. The approximate locations of alterations are indicated on this floor plan.

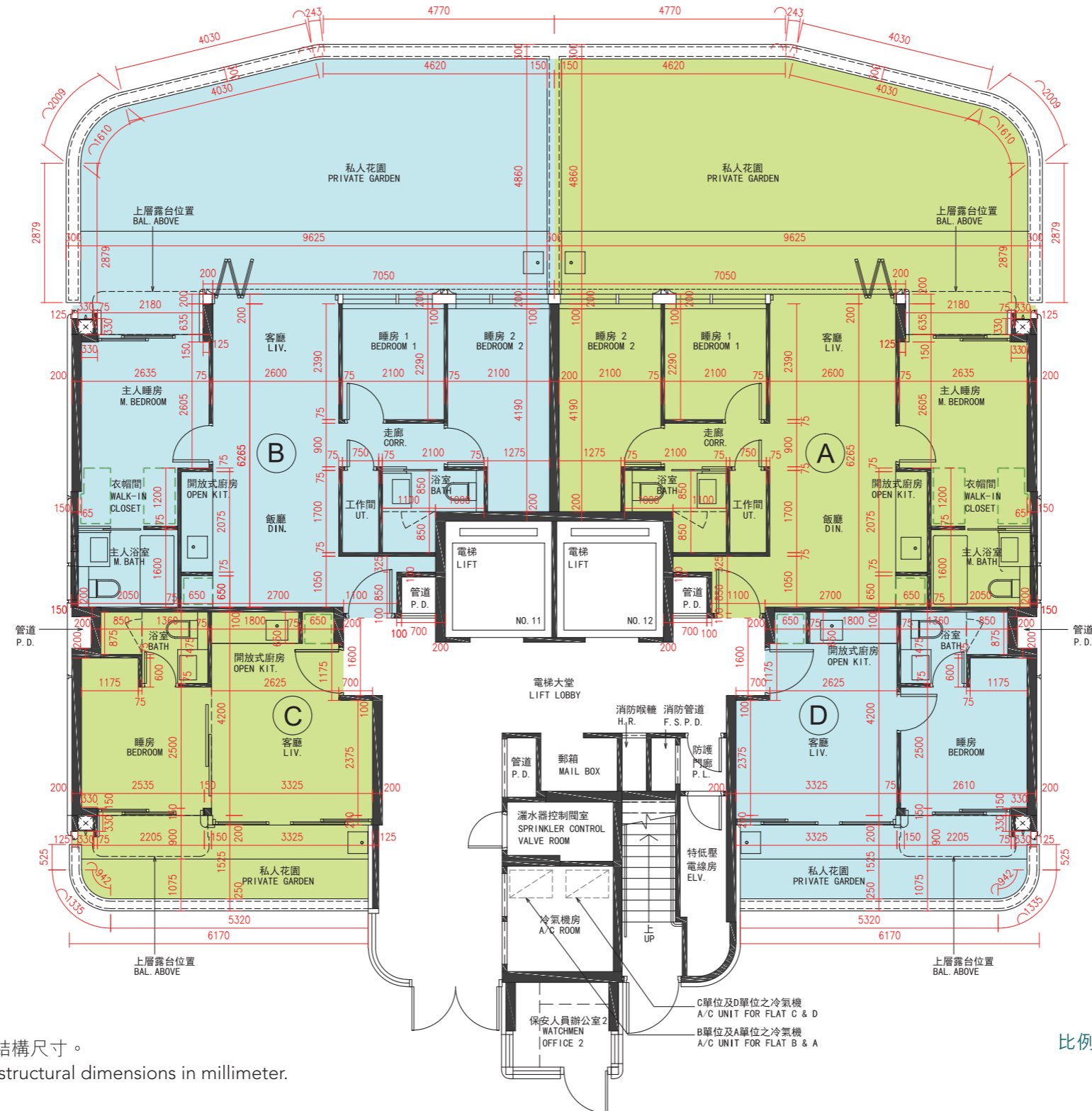
低座B座地下A及B單位的改動工程包括：
Flats A and B on G/F of Mansion B include:
(A) 原玻璃趟門被移除並以玻璃摺門取代。
(A) Original glass sliding doors was demolished and replaced by glass bi-folding doors.

備註：平面圖所列數字為以毫米標示之建築結構尺寸。
Note : The dimensions of floor plans are all structural dimensions in millimeter.

10 發展項目的住宅物業的樓面平面圖 FLOOR PLANS OF RESIDENTIAL PROPERTIES IN THE DEVELOPMENT

低座B座 MANSION B

地下之現狀間隔平面圖 G/F AS-IS FLOOR PLAN



備註：平面圖所列數字為以毫米標示之建築結構尺寸。
Note : The dimensions of floor plans are all structural dimensions in millimeter.

比例尺 Scale 0米(m) 5米(m)

10 發展項目的住宅物業的樓面平面圖

FLOOR PLANS OF RESIDENTIAL PROPERTIES IN THE DEVELOPMENT

每個住宅物業 Each Residential Property	樓層 FLOOR	低座B座 MANSION B			
		單位 FLAT			
		A	B	C	D
樓板(不包括灰泥)的厚度(毫米) Thickness of Floor Slab (excluding plaster) (mm)	地下 G/F	175	175	175	175
層與層之間的高度(毫米) Floor-to-Floor Height (mm)		3500	3500	3500	3500

因住宅物業的較高樓層的結構牆的厚度遞減，較高樓層的內部面積，一般比較低樓層的內部面積稍大。

The internal areas of the residential properties on the upper floors will generally be slightly larger than those on the lower floors because of the reducing thickness of the structural walls on the upper floors.

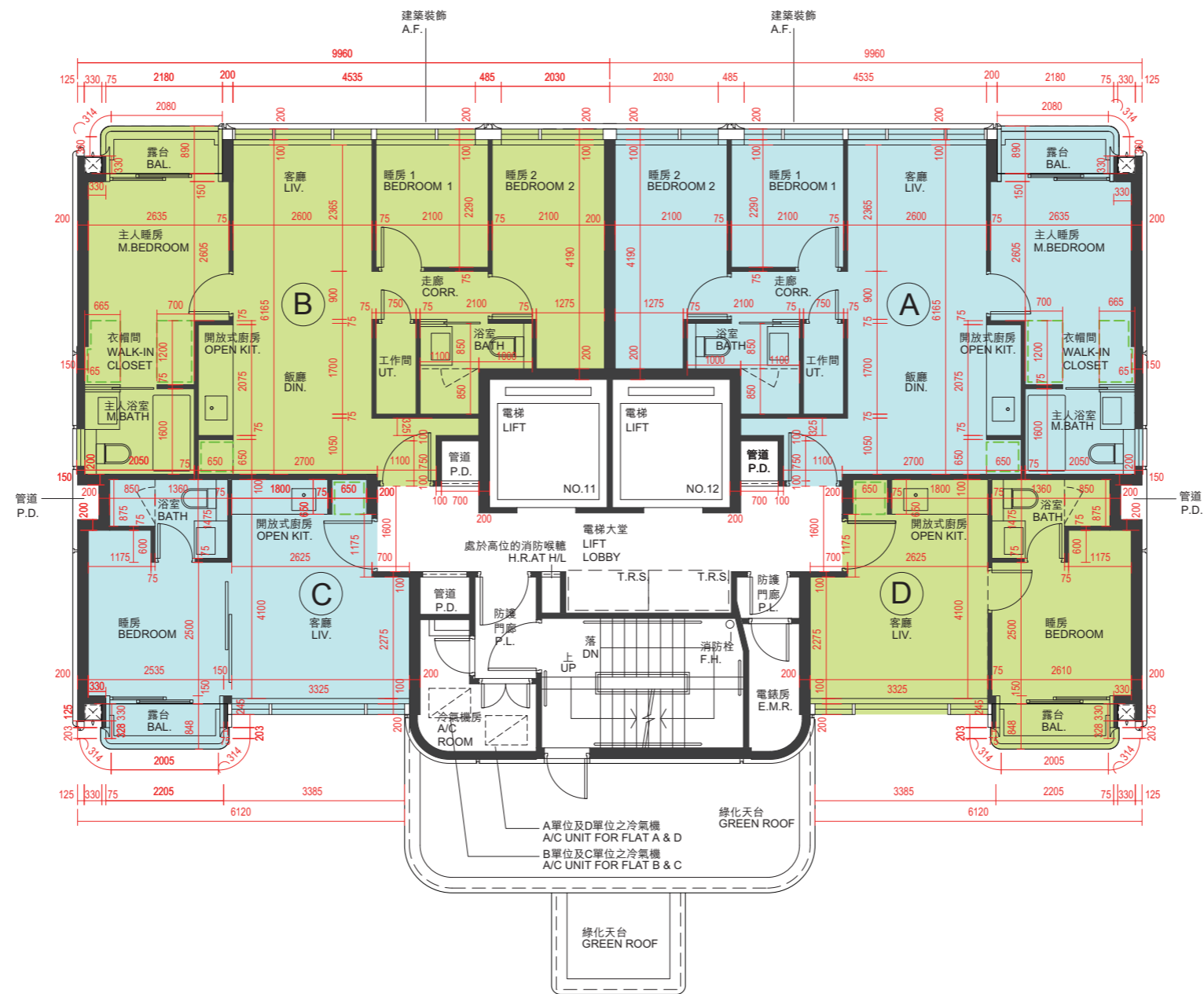
請參閱本售樓說明書第76頁為住宅物業的樓面平面圖而設之備註和圖例。

Please refer to page 76 of this sales brochure for the remarks and legends for the floor plans of residential properties.

10 發展項目的住宅物業的樓面平面圖 FLOOR PLANS OF RESIDENTIAL PROPERTIES IN THE DEVELOPMENT

低座B座 MANSION B

1樓
1/F



備註：平面圖所列數字為以毫米標示之建築結構尺寸。
Note : The dimensions of floor plans are all structural dimensions in millimeter.

比例尺 Scale 0米(m) 5米(m)

10 發展項目的住宅物業的樓面平面圖

FLOOR PLANS OF RESIDENTIAL PROPERTIES IN THE DEVELOPMENT

每個住宅物業 Each Residential Property	樓層 FLOOR	低座B座 MANSION B			
		單位 FLAT			
		A	B	C	D
樓板(不包括灰泥)的厚度(毫米) Thickness of Floor Slab (excluding plaster) (mm)	1樓 1/F	175	175	175	175
層與層之間的高度(毫米) Floor-to-Floor Height (mm)		3500	3500	3500	3500

因住宅物業的較高樓層的結構牆的厚度遞減，較高樓層的內部面積，一般比較低樓層的內部面積稍大。

The internal areas of the residential properties on the upper floors will generally be slightly larger than those on the lower floors because of the reducing thickness of the structural walls on the upper floors.

請參閱本售樓說明書第76頁為住宅物業的樓面平面圖而設之備註和圖例。

Please refer to page 76 of this sales brochure for the remarks and legends for the floor plans of residential properties.

10 發展項目的住宅物業的樓面平面圖

FLOOR PLANS OF RESIDENTIAL PROPERTIES IN THE DEVELOPMENT

每個住宅物業 Each Residential Property	樓層 FLOOR	低座B座 MANSION B			
		單位 FLAT			
		A	B	C	D
樓板(不包括灰泥)的厚度(毫米) Thickness of Floor Slab (excluding plaster) (mm)	2樓至3樓 2/F and 3/F	175	175	175	175
層與層之間的高度(毫米) Floor-to-Floor Height (mm)		3500	3500	3500	3500

因住宅物業的較高樓層的結構牆的厚度遞減，較高樓層的內部面積，一般比較低樓層的內部面積稍大。

The internal areas of the residential properties on the upper floors will generally be slightly larger than those on the lower floors because of the reducing thickness of the structural walls on the upper floors.

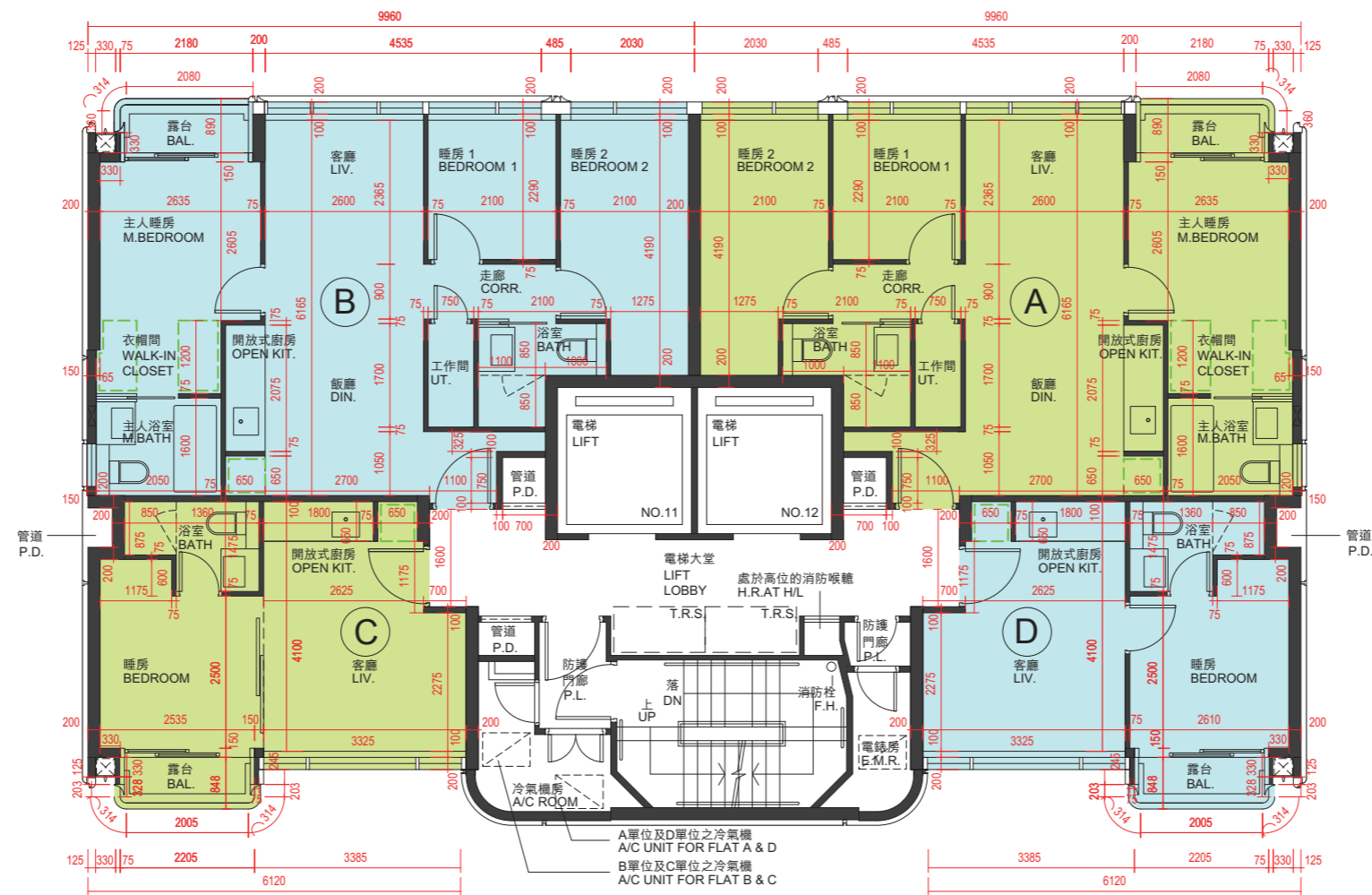
請參閱本售樓說明書第76頁為住宅物業的樓面平面圖而設之備註和圖例。

Please refer to page 76 of this sales brochure for the remarks and legends for the floor plans of residential properties.

10 發展項目的住宅物業的樓面平面圖 FLOOR PLANS OF RESIDENTIAL PROPERTIES IN THE DEVELOPMENT

低座B座 MANSION B

5樓
5/F



備註：平面圖所列數字為以毫米標示之建築結構尺寸。
Note : The dimensions of floor plans are all structural dimensions in millimeter.

比例尺 Scale 0米(m) 5米(m)

10 發展項目的住宅物業的樓面平面圖

FLOOR PLANS OF RESIDENTIAL PROPERTIES IN THE DEVELOPMENT

每個住宅物業 Each Residential Property	樓層 FLOOR	低座B座 MANSION B			
		單位 FLAT			
		A	B	C	D
樓板(不包括灰泥)的厚度(毫米) Thickness of Floor Slab (excluding plaster) (mm)	5樓 5/F	175	175	175	175
層與層之間的高度(毫米) Floor-to-Floor Height (mm)		3500	3500	3500	3500

因住宅物業的較高樓層的結構牆的厚度遞減，較高樓層的內部面積，一般比較低樓層的內部面積稍大。

The internal areas of the residential properties on the upper floors will generally be slightly larger than those on the lower floors because of the reducing thickness of the structural walls on the upper floors.

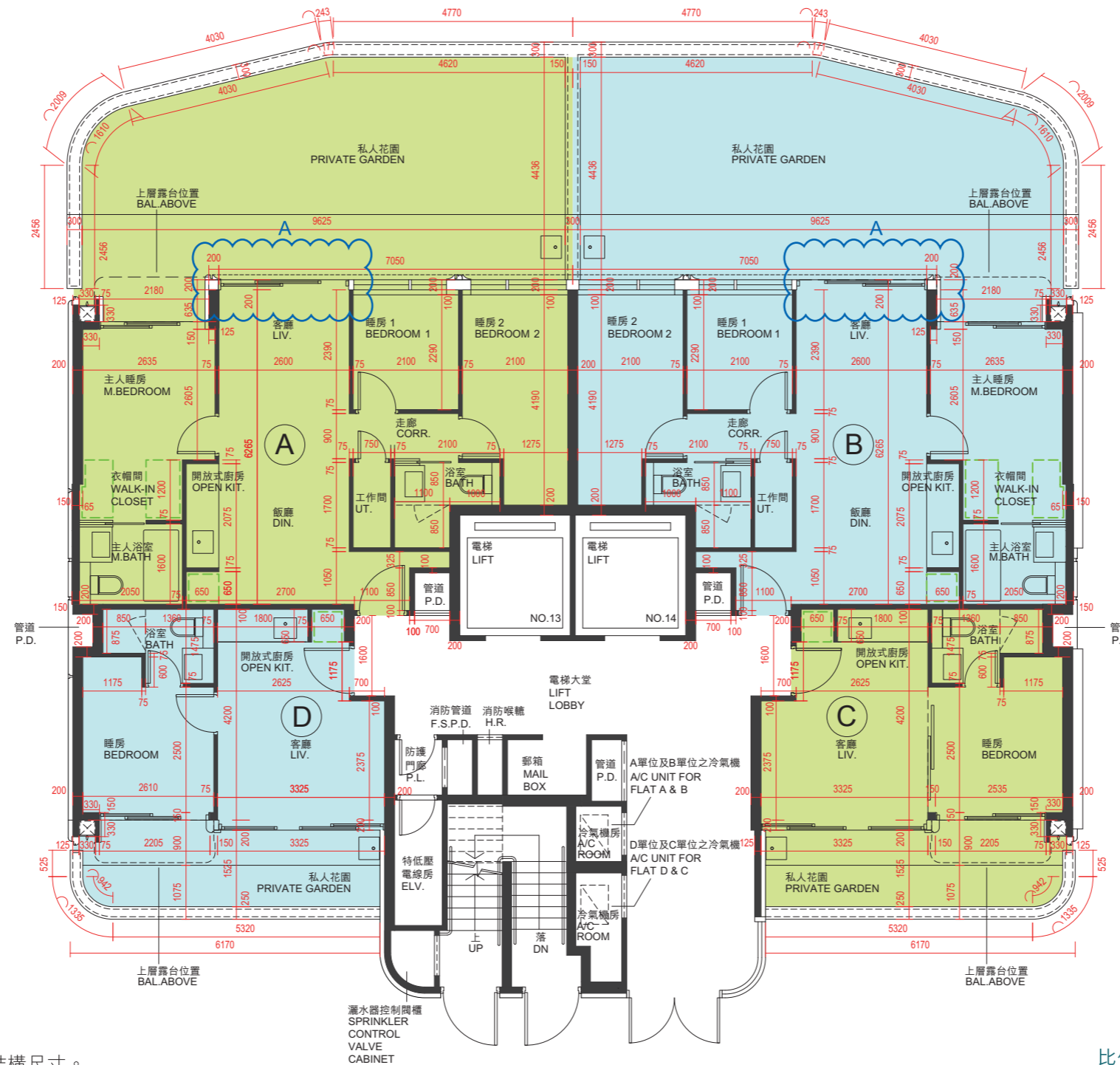
請參閱本售樓說明書第76頁為住宅物業的樓面平面圖而設之備註和圖例。

Please refer to page 76 of this sales brochure for the remarks and legends for the floor plans of residential properties.

10 發展項目的住宅物業的樓面平面圖 FLOOR PLANS OF RESIDENTIAL PROPERTIES IN THE DEVELOPMENT

低座C座 MANSION C

地下
G/F



低座C座地下A及B單位在發展項目落成後進行《建築物條例》下的小型工程或加建工程而有所改動。該等改動的大概位置已於本樓面平面圖中作標示。
Flats A and B on G/F of Mansion C have been altered by way of minor works or alterations and additions works under the Buildings Ordinance after completion of the Development. The approximate locations of alterations are indicated on this floor plan.

低座C座地下A及B單位的改動工程包括：
Flats A and B on G/F of Mansion C include:
(A) 原玻璃趟門被移除並以玻璃摺門取代。
(A) Original glass sliding doors was demolished and replaced by glass bi-folding doors.

備註：平面圖所列數字為以毫米標示之建築結構尺寸。
Note: The dimensions of floor plans are all structural dimensions in millimeter.

比例尺 Scale 0米(m) 5米(m)



10 發展項目的住宅物業的樓面平面圖 FLOOR PLANS OF RESIDENTIAL PROPERTIES IN THE DEVELOPMENT

低座C座 MANSION C

地下之現狀間隔平面圖
G/F AS-IS FLOOR PLAN



備註：平面圖所列數字為以毫米標示之建築結構尺寸。
Note : The dimensions of floor plans are all structural dimensions in millimeter.

比例尺 Scale 0米(m) 5米(m)

10 發展項目的住宅物業的樓面平面圖

FLOOR PLANS OF RESIDENTIAL PROPERTIES IN THE DEVELOPMENT

每個住宅物業 Each Residential Property	樓層 FLOOR	低座C座 MANSION C			
		單位 FLAT			
		A	B	C	D
樓板(不包括灰泥)的厚度(毫米) Thickness of Floor Slab (excluding plaster) (mm)	地下 G/F	175	175	175	175
層與層之間的高度(毫米) Floor-to-Floor Height (mm)		3500	3500	3500	3500

因住宅物業的較高樓層的結構牆的厚度遞減，較高樓層的內部面積，一般比較低樓層的內部面積稍大。

The internal areas of the residential properties on the upper floors will generally be slightly larger than those on the lower floors because of the reducing thickness of the structural walls on the upper floors.

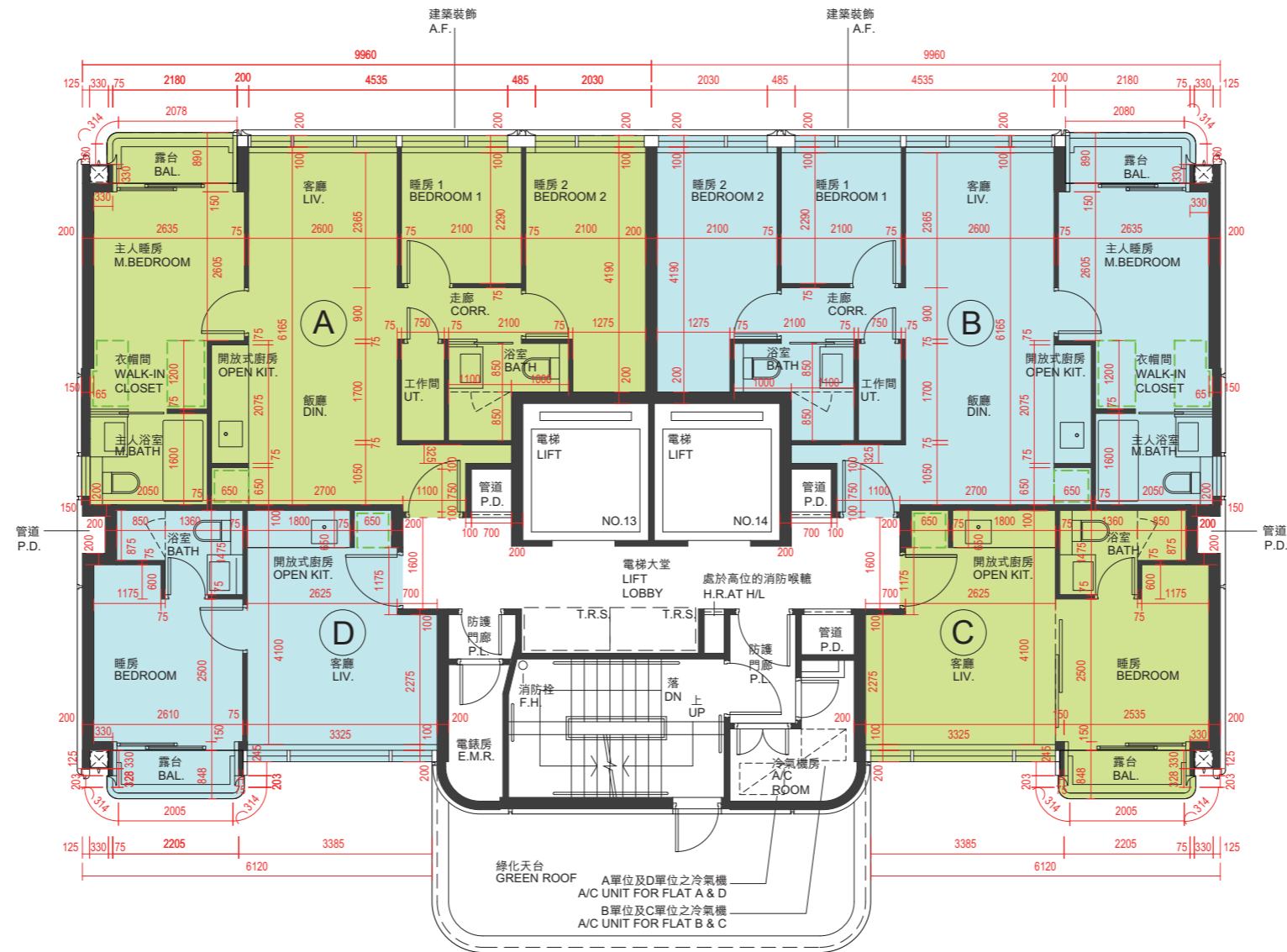
請參閱本售樓說明書第76頁為住宅物業的樓面平面圖而設之備註和圖例。

Please refer to page 76 of this sales brochure for the remarks and legends for the floor plans of residential properties.

10 發展項目的住宅物業的樓面平面圖 FLOOR PLANS OF RESIDENTIAL PROPERTIES IN THE DEVELOPMENT

低座C座 MANSION C

1樓
1/F



備註：平面圖所列數字為以毫米標示之建築結構尺寸。
Note : The dimensions of floor plans are all structural dimensions in millimeter.

比例尺 Scale 0米(m) 5米(m)

10 發展項目的住宅物業的樓面平面圖

FLOOR PLANS OF RESIDENTIAL PROPERTIES IN THE DEVELOPMENT

每個住宅物業 Each Residential Property	樓層 FLOOR	低座C座 MANSION C			
		單位 FLAT			
		A	B	C	D
樓板(不包括灰泥)的厚度(毫米) Thickness of Floor Slab (excluding plaster) (mm)	1樓 1/F	175	175	175	175
層與層之間的高度(毫米) Floor-to-Floor Height (mm)		3500	3500	3500	3500

因住宅物業的較高樓層的結構牆的厚度遞減，較高樓層的內部面積，一般比較低樓層的內部面積稍大。

The internal areas of the residential properties on the upper floors will generally be slightly larger than those on the lower floors because of the reducing thickness of the structural walls on the upper floors.

請參閱本售樓說明書第76頁為住宅物業的樓面平面圖而設之備註和圖例。

Please refer to page 76 of this sales brochure for the remarks and legends for the floor plans of residential properties.

10 發展項目的住宅物業的樓面平面圖

FLOOR PLANS OF RESIDENTIAL PROPERTIES IN THE DEVELOPMENT

每個住宅物業 Each Residential Property	樓層 FLOOR	低座C座 MANSION C			
		單位 FLAT			
		A	B	C	D
樓板(不包括灰泥)的厚度(毫米) Thickness of Floor Slab (excluding plaster) (mm)	2樓至3樓 2/F - 3/F	175	175	175	175
層與層之間的高度(毫米) Floor-to-Floor Height (mm)		3500	3500	3500	3500

因住宅物業的較高樓層的結構牆的厚度遞減，較高樓層的內部面積，一般比較低樓層的內部面積稍大。

The internal areas of the residential properties on the upper floors will generally be slightly larger than those on the lower floors because of the reducing thickness of the structural walls on the upper floors.

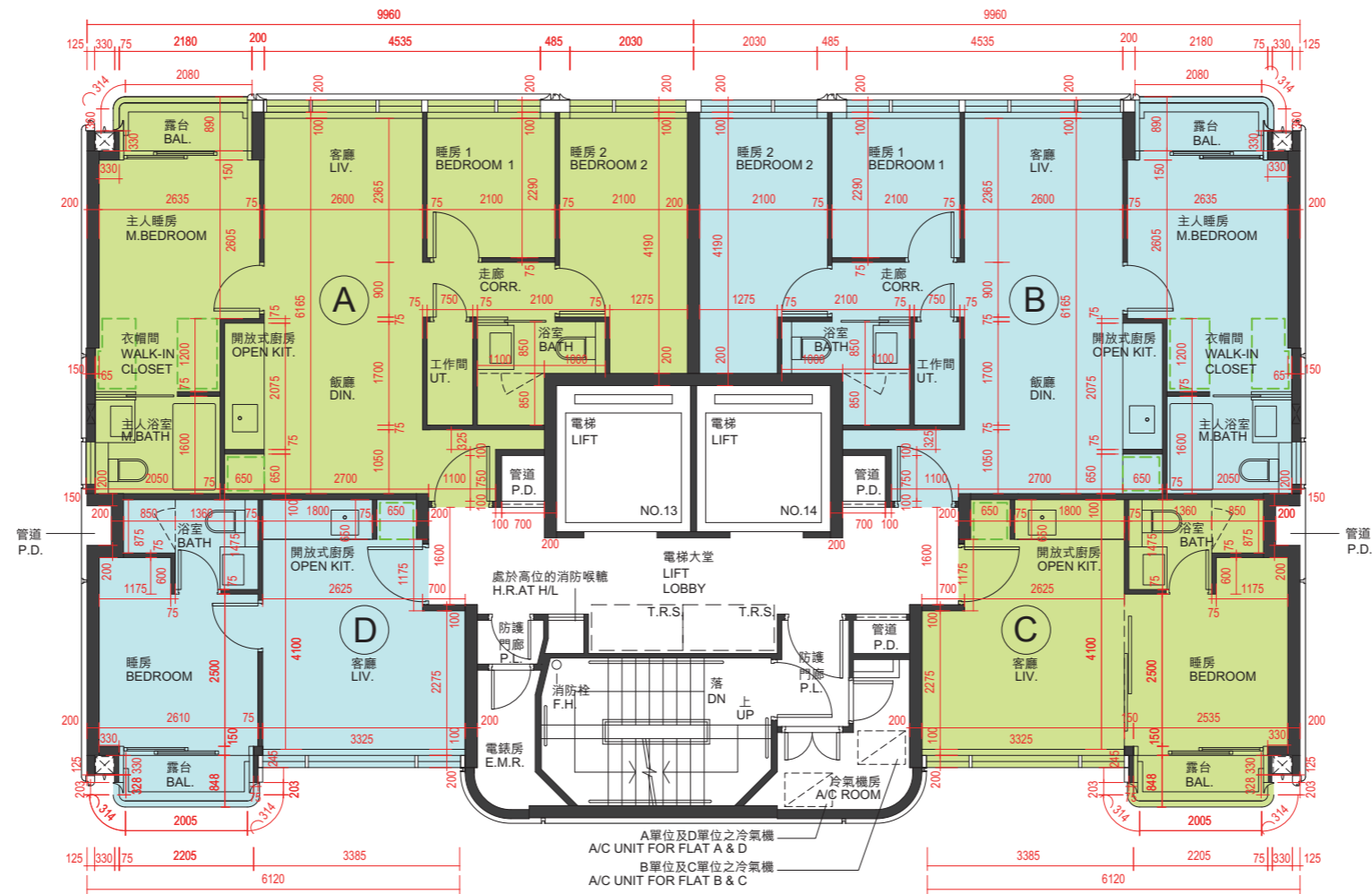
請參閱本售樓說明書第76頁為住宅物業的樓面平面圖而設之備註和圖例。

Please refer to page 76 of this sales brochure for the remarks and legends for the floor plans of residential properties.

10 發展項目的住宅物業的樓面平面圖 FLOOR PLANS OF RESIDENTIAL PROPERTIES IN THE DEVELOPMENT

低座C座 MANSION C

5樓
5/F



備註：平面圖所列數字為以毫米標示之建築結構尺寸。
Note : The dimensions of floor plans are all structural dimensions in millimeter.

比例尺 Scale 0米(m) 5米(m)

10 發展項目的住宅物業的樓面平面圖

FLOOR PLANS OF RESIDENTIAL PROPERTIES IN THE DEVELOPMENT

每個住宅物業 Each Residential Property	樓層 FLOOR	低座C座 MANSION C			
		單位 FLAT			
		A	B	C	D
樓板(不包括灰泥)的厚度(毫米) Thickness of Floor Slab (excluding plaster) (mm)	5樓 5/F	175	175	175	175
層與層之間的高度(毫米) Floor-to-Floor Height (mm)		3500	3500	3500	3500

因住宅物業的較高樓層的結構牆的厚度遞減，較高樓層的內部面積，一般比較低樓層的內部面積稍大。

The internal areas of the residential properties on the upper floors will generally be slightly larger than those on the lower floors because of the reducing thickness of the structural walls on the upper floors.

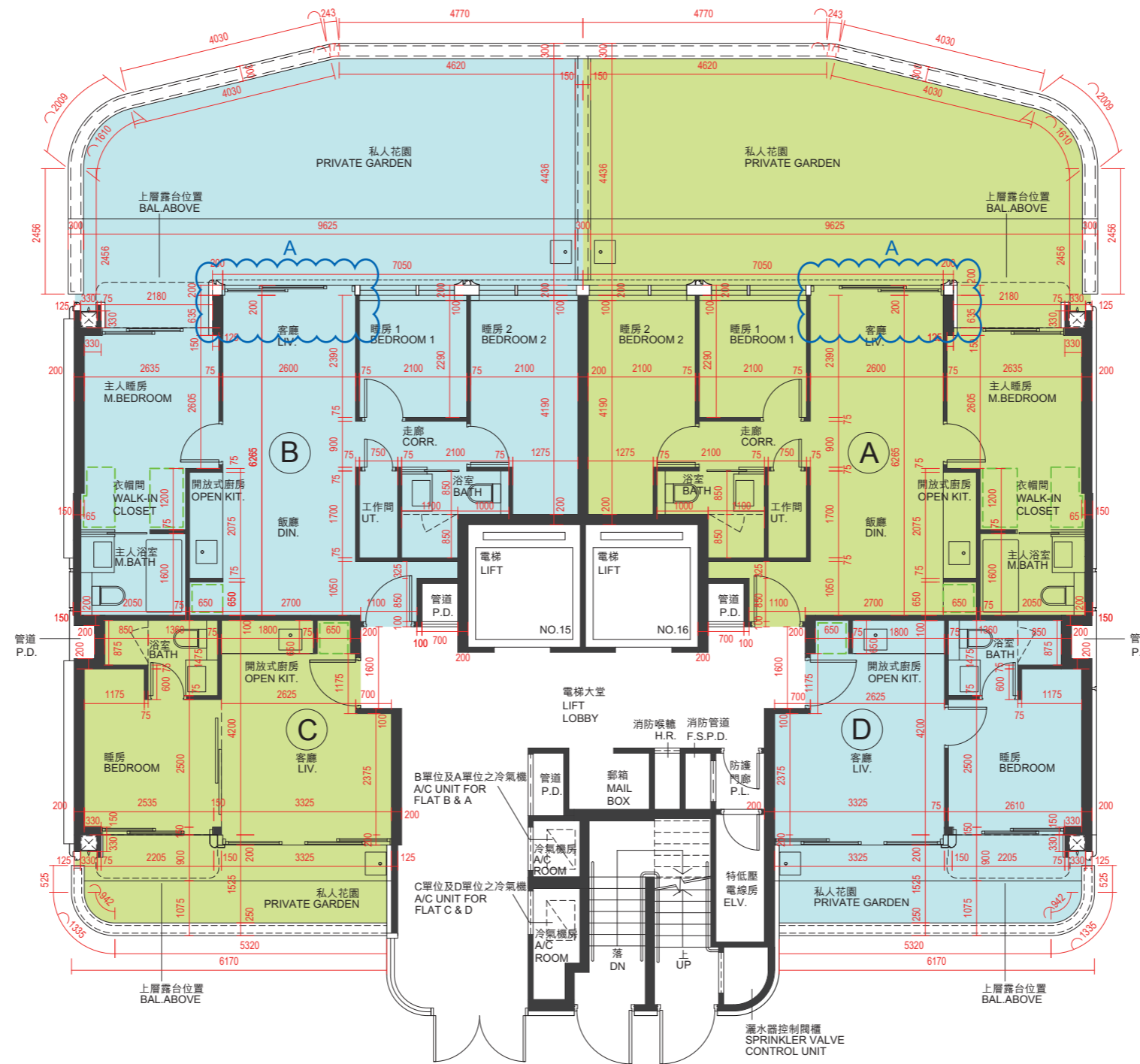
請參閱本售樓說明書第76頁為住宅物業的樓面平面圖而設之備註和圖例。

Please refer to page 76 of this sales brochure for the remarks and legends for the floor plans of residential properties.

10 發展項目的住宅物業的樓面平面圖 FLOOR PLANS OF RESIDENTIAL PROPERTIES IN THE DEVELOPMENT

低座D座 MANSION D

地下
G/F



低座D座地下A及B單位在發展項目落成後進行《建築物條例》下的小型工程或加建工程而有所改動。該等改動的大概位置已於本樓面平面圖中作標示。

Flats A and B on G/F of Mansion D have been altered by way of minor works or alterations and additions works under the Buildings Ordinance after completion of the Development. The approximate locations of alterations are indicated on this floor plan.

低座D座地下A及B單位的改動工程包括：
Flats A and B on G/F of Mansion D include:
(A) Original glass sliding doors was demolished and replaced by glass bi-folding doors.

備註：平面圖所列數字為以毫米標示之建築結構尺寸。
Note : The dimensions of floor plans are all structural dimensions in millimeter.

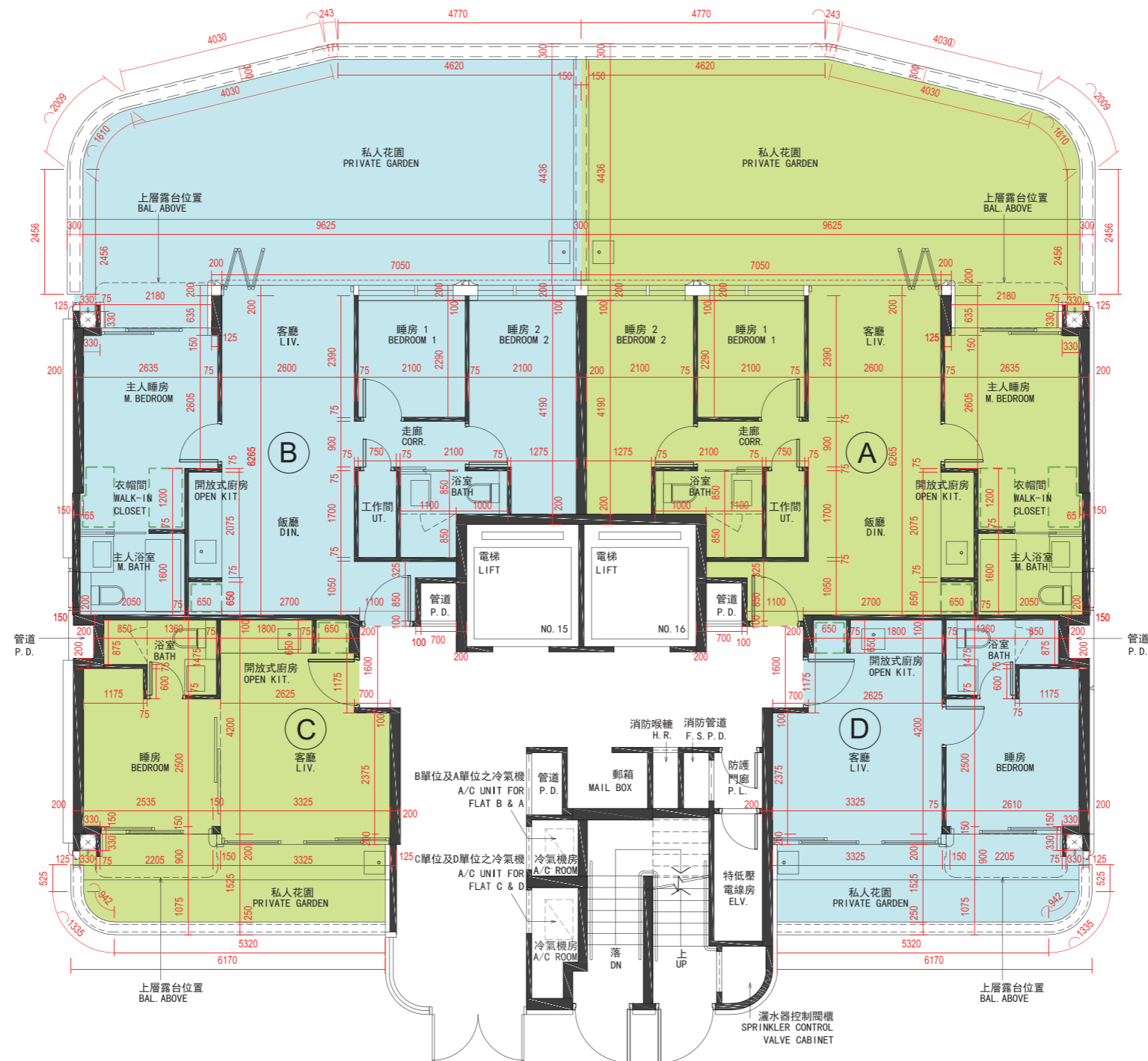
比例尺 Scale 0米(m) 5米(m)



10 發展項目的住宅物業的樓面平面圖 FLOOR PLANS OF RESIDENTIAL PROPERTIES IN THE DEVELOPMENT

低座D座 MANSION D

地下之現狀間隔平面圖
G/F AS-IS FLOOR PLAN



備註：平面圖所列數字為以毫米標示之建築結構尺寸。
Note : The dimensions of floor plans are all structural dimensions in millimeter.

比例尺 Scale 0米(m) 5米(m)

10 發展項目的住宅物業的樓面平面圖

FLOOR PLANS OF RESIDENTIAL PROPERTIES IN THE DEVELOPMENT

每個住宅物業 Each Residential Property	樓層 FLOOR	低座D座 MANSION D			
		單位 FLAT			
		A	B	C	D
樓板(不包括灰泥)的厚度(毫米) Thickness of Floor Slab (excluding plaster) (mm)	地下 G/F	175	175	175	175
層與層之間的高度(毫米) Floor-to-Floor Height (mm)		3500	3500	3500	3500

因住宅物業的較高樓層的結構牆的厚度遞減，較高樓層的內部面積，一般比較低樓層的內部面積稍大。

The internal areas of the residential properties on the upper floors will generally be slightly larger than those on the lower floors because of the reducing thickness of the structural walls on the upper floors.

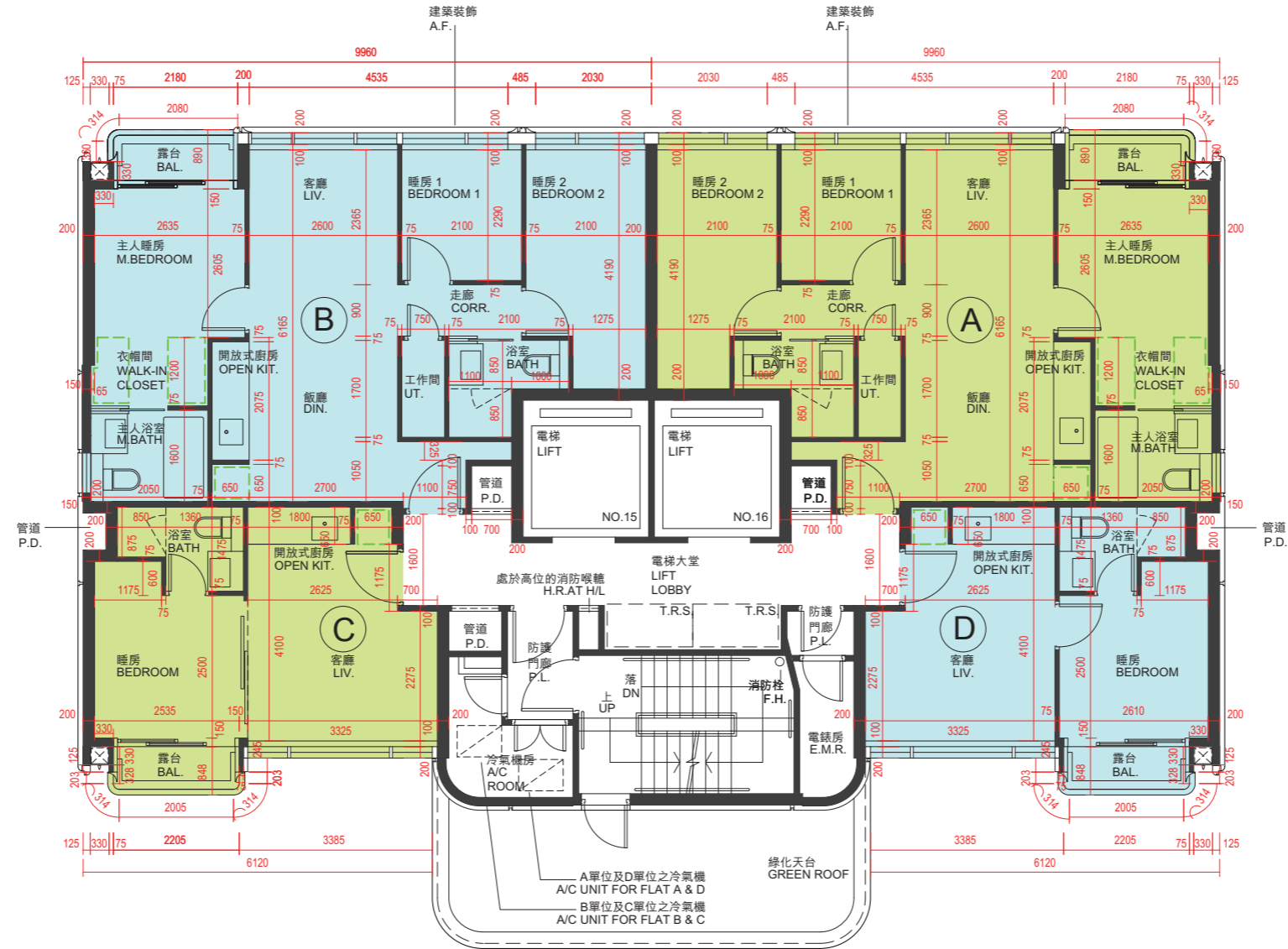
請參閱本售樓說明書第76頁為住宅物業的樓面平面圖而設之備註和圖例。

Please refer to page 76 of this sales brochure for the remarks and legends for the floor plans of residential properties.

10 發展項目的住宅物業的樓面平面圖 FLOOR PLANS OF RESIDENTIAL PROPERTIES IN THE DEVELOPMENT

低座D座 MANSION D

1樓
1/F



備註：平面圖所列數字為以毫米標示之建築結構尺寸。
Note : The dimensions of floor plans are all structural dimensions in millimeter.

比例尺 Scale 0米(m) 5米(m)

10 發展項目的住宅物業的樓面平面圖

FLOOR PLANS OF RESIDENTIAL PROPERTIES IN THE DEVELOPMENT

每個住宅物業 Each Residential Property	樓層 FLOOR	低座D座 MANSION D			
		單位 FLAT			
		A	B	C	D
樓板(不包括灰泥)的厚度(毫米) Thickness of Floor Slab (excluding plaster) (mm)	1樓 1/F	175	175	175	175
層與層之間的高度(毫米) Floor-to-Floor Height (mm)		3500	3500	3500	3500

因住宅物業的較高樓層的結構牆的厚度遞減，較高樓層的內部面積，一般比較低樓層的內部面積稍大。

The internal areas of the residential properties on the upper floors will generally be slightly larger than those on the lower floors because of the reducing thickness of the structural walls on the upper floors.

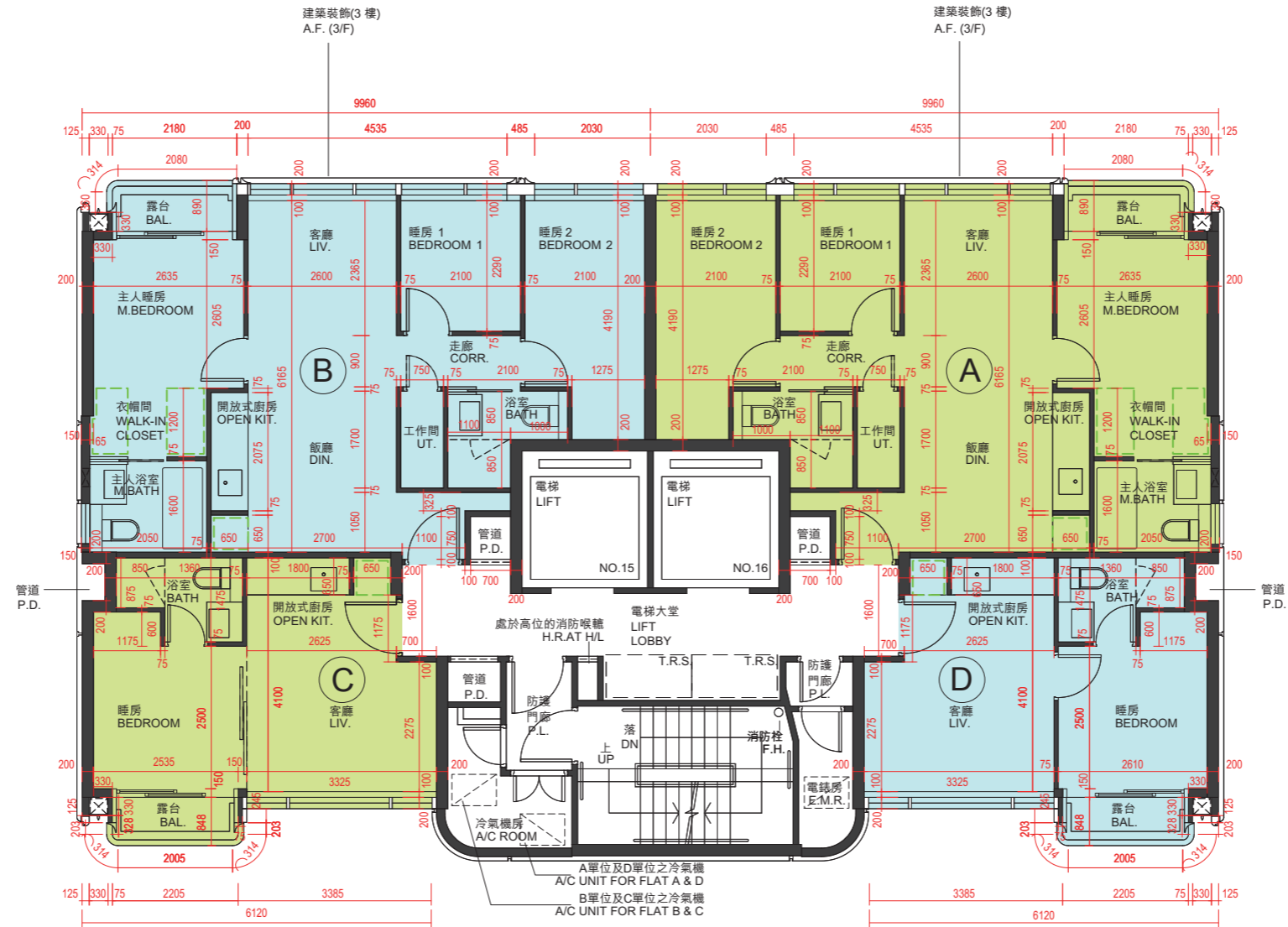
請參閱本售樓說明書第76頁為住宅物業的樓面平面圖而設之備註和圖例。

Please refer to page 76 of this sales brochure for the remarks and legends for the floor plans of residential properties.

10 發展項目的住宅物業的樓面平面圖 FLOOR PLANS OF RESIDENTIAL PROPERTIES IN THE DEVELOPMENT

低座D座 MANSION D

2樓至3樓
2/F - 3/F



備註：平面圖所列數字為以毫米標示之建築結構尺寸。
Note : The dimensions of floor plans are all structural dimensions in millimeter.

比例尺 Scale 0米(m) 5米(m)

10 發展項目的住宅物業的樓面平面圖

FLOOR PLANS OF RESIDENTIAL PROPERTIES IN THE DEVELOPMENT

每個住宅物業 Each Residential Property	樓層 FLOOR	低座D座 MANSION D			
		單位 FLAT			
		A	B	C	D
樓板(不包括灰泥)的厚度(毫米) Thickness of Floor Slab (excluding plaster) (mm)	2樓至3樓 2/F and 3/F	175	175	175	175
層與層之間的高度(毫米) Floor-to-Floor Height (mm)		3500	3500	3500	3500

因住宅物業的較高樓層的結構牆的厚度遞減，較高樓層的內部面積，一般比較低樓層的內部面積稍大。

The internal areas of the residential properties on the upper floors will generally be slightly larger than those on the lower floors because of the reducing thickness of the structural walls on the upper floors.

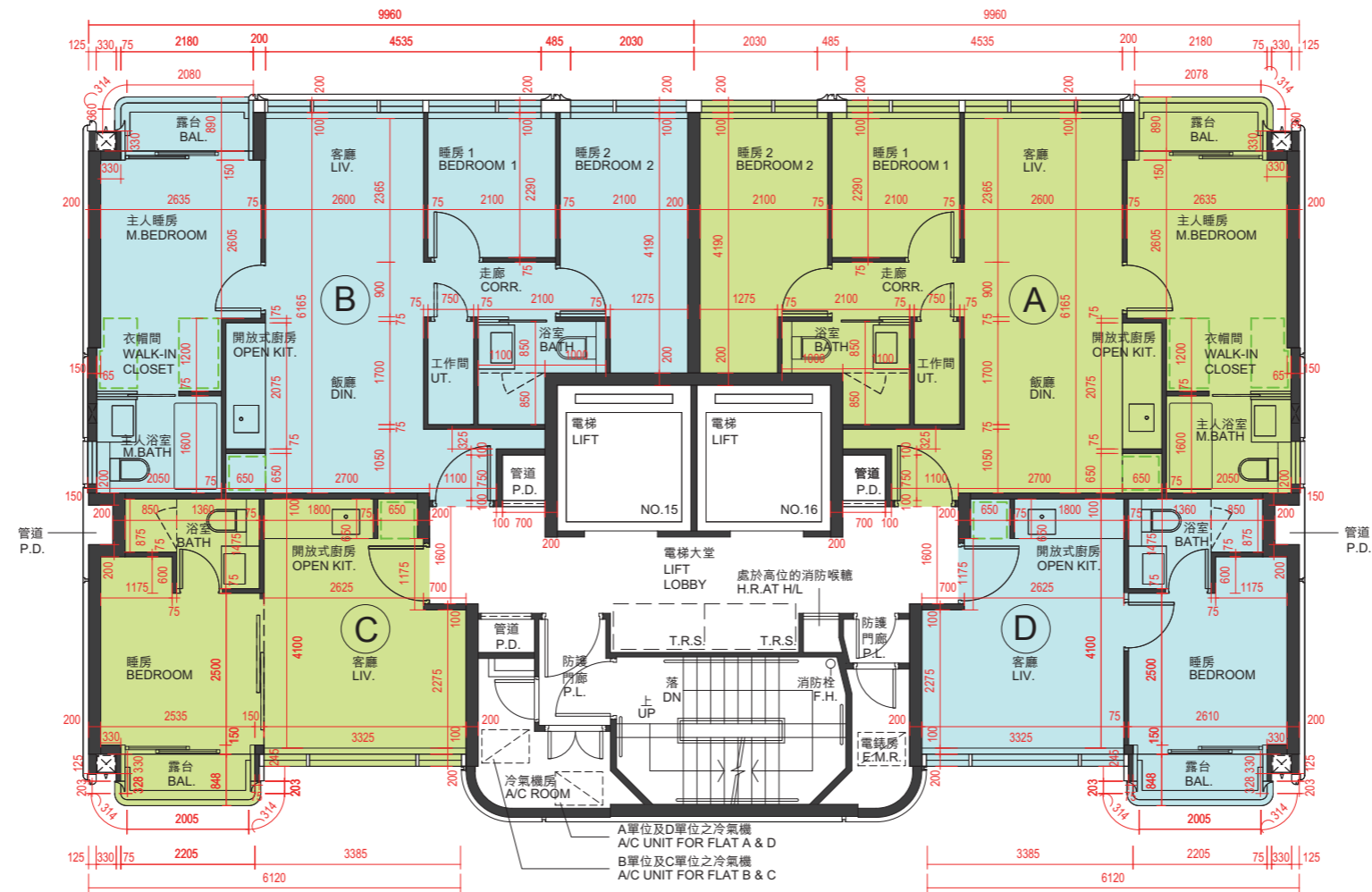
請參閱本售樓說明書第76頁為住宅物業的樓面平面圖而設之備註和圖例。

Please refer to page 76 of this sales brochure for the remarks and legends for the floor plans of residential properties.

10 發展項目的住宅物業的樓面平面圖 FLOOR PLANS OF RESIDENTIAL PROPERTIES IN THE DEVELOPMENT

低座D座 MANSION D

5樓
5/F



備註：平面圖所列數字為以毫米標示之建築結構尺寸。
Note : The dimensions of floor plans are all structural dimensions in millimeter.

比例尺 Scale 0米(m) 5米(m)

10 發展項目的住宅物業的樓面平面圖

FLOOR PLANS OF RESIDENTIAL PROPERTIES IN THE DEVELOPMENT

每個住宅物業 Each Residential Property	樓層 FLOOR	低座D座 MANSION D			
		單位 FLAT			
		A	B	C	D
樓板(不包括灰泥)的厚度(毫米) Thickness of Floor Slab (excluding plaster) (mm)	5樓 5/F	175	175	175	175
層與層之間的高度(毫米) Floor-to-Floor Height (mm)		3500	3500	3500	3500

因住宅物業的較高樓層的結構牆的厚度遞減，較高樓層的內部面積，一般比較低樓層的內部面積稍大。

The internal areas of the residential properties on the upper floors will generally be slightly larger than those on the lower floors because of the reducing thickness of the structural walls on the upper floors.

請參閱本售樓說明書第76頁為住宅物業的樓面平面圖而設之備註和圖例。

Please refer to page 76 of this sales brochure for the remarks and legends for the floor plans of residential properties.

10 發展項目的住宅物業的樓面平面圖

FLOOR PLANS OF RESIDENTIAL PROPERTIES IN THE DEVELOPMENT

備註：


1. 部分住宅物業的露台、工作平台、平台、私人平台、私人花園、私人天台或外牆或設有外露之公用喉管，或外牆裝飾板內藏之公用喉管。
2. 部分住宅物業內之部分天花或有跌級樓板，用以安裝上層之機電設備或配合上層之結構、建築設計及/或裝修設計上的需要。
3. 部分住宅物業內或設有假陣或假天花用以安裝冷氣喉管及/或其他機電設備。
4. 各住宅物業的樓面平面圖內所展示之裝置及設備的圖標如浴缸、洗面盆、座廁、淋浴間、洗滌盤、櫃(如有)等乃根據最新經批准的建築圖則擬備，其形狀、尺寸、比例或與實際提供的裝置及設備存在差異，僅供示意及參考之用。

Notes:

1. Common pipes exposed or enclosed in cladding may be located at the balcony, utility platform, flat roof, private flat roof, private garden, private roof or external wall of some residential properties.
2. There may be sunken slabs at some parts of the ceiling inside some residential properties for the installation of mechanical and electrical services of the floor above or due to the structural, architectural and/or decoration design requirements of the floor above.
3. There may be ceiling bulkheads or false ceiling inside some residential properties for the installation of air-conditioning conduits and/or other mechanical and electrical services.
4. Those icons of fittings and appliances shown on the floor plans of residential properties like bathtubs, wash basins, water closets, shower cubicles, sink units, cabinets (if any) etc. are prepared in accordance with the latest approved building plans. Their shapes, dimensions, scales may be differed from the fittings and appliances actually provided and they are for indication and reference only.

樓面平面圖之圖例

Legends of Floor Plans

A/C ROOM	=	冷氣機房 Air-conditioning plant room
A.F.	=	建築裝飾 Architectural features
BAL.	=	露台 Balcony
BAL. ABOVE	=	上層露台位置 Balcony above
BATH	=	浴室 Bathroom
CORR.	=	走廊 Corridor
DIN.	=	飯廳 Dining room
DN	=	落 Down
ELEC ROOM	=	電房 Electrical Room
ELV. / E.L.V.	=	特低壓電線房 Extra-low voltage room
E.M.R.	=	電錶房 Electrical meter room
F.H.	=	消防栓 Fire hydrant
F.S.P.D.	=	消防管道 Fire services pipe duct
H.R.	=	消防喉轆 Hose reel
H.R. AT H/L	=	處於高位的消防喉轆 Hose reel at high level
KIT.	=	廚房 Kitchen
LAV.	=	洗手間 Lavatory
LIV.	=	客廳 Living room
M. BATH	=	主人浴室 Master bathroom
M. BEDROOM	=	主人睡房 Master bedroom
OPEN KIT.	=	開放式廚房 Open kitchen
P.D.	=	管道 Pipe duct
P.L.	=	防護門廊 Protected lobby
R.S.M.R.R.	=	垃圾及物料回收室 Refuse storage and material recovery room
T.B.E. ROOM	=	電訊及廣播設備室 Telecommunications and broadcasting equipment room
TOP OF U.P.	=	工作平台頂部 Top of utility platform
T.R.S.	=	臨時庇護處 Temporary refuge space
U.P.	=	工作平台 Utility platform
UT.	=	工作間 Utility room
V.D.	=	排氣管道 Ventilation duct
W.M.C.	=	水錶櫃 Water meter cabinet
	=	隨樓附送之嵌入式裝置 Built-in fittings provided in the flats