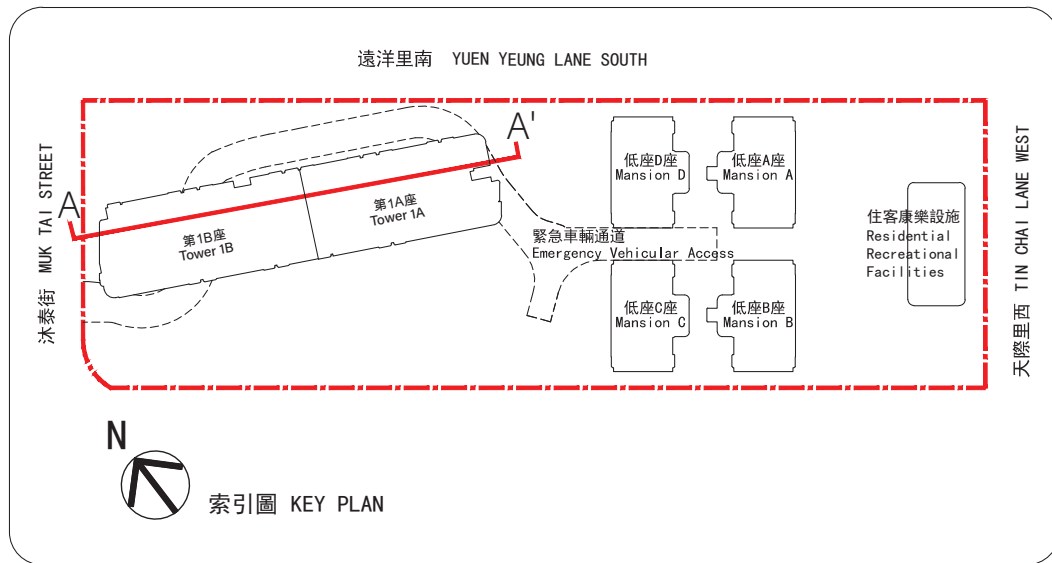


18 發展項目中的建築物的橫截面圖 CROSS-SECTION PLAN OF BUILDING IN THE DEVELOPMENT

第1A座及第1B座 TOWER 1A & TOWER 1B

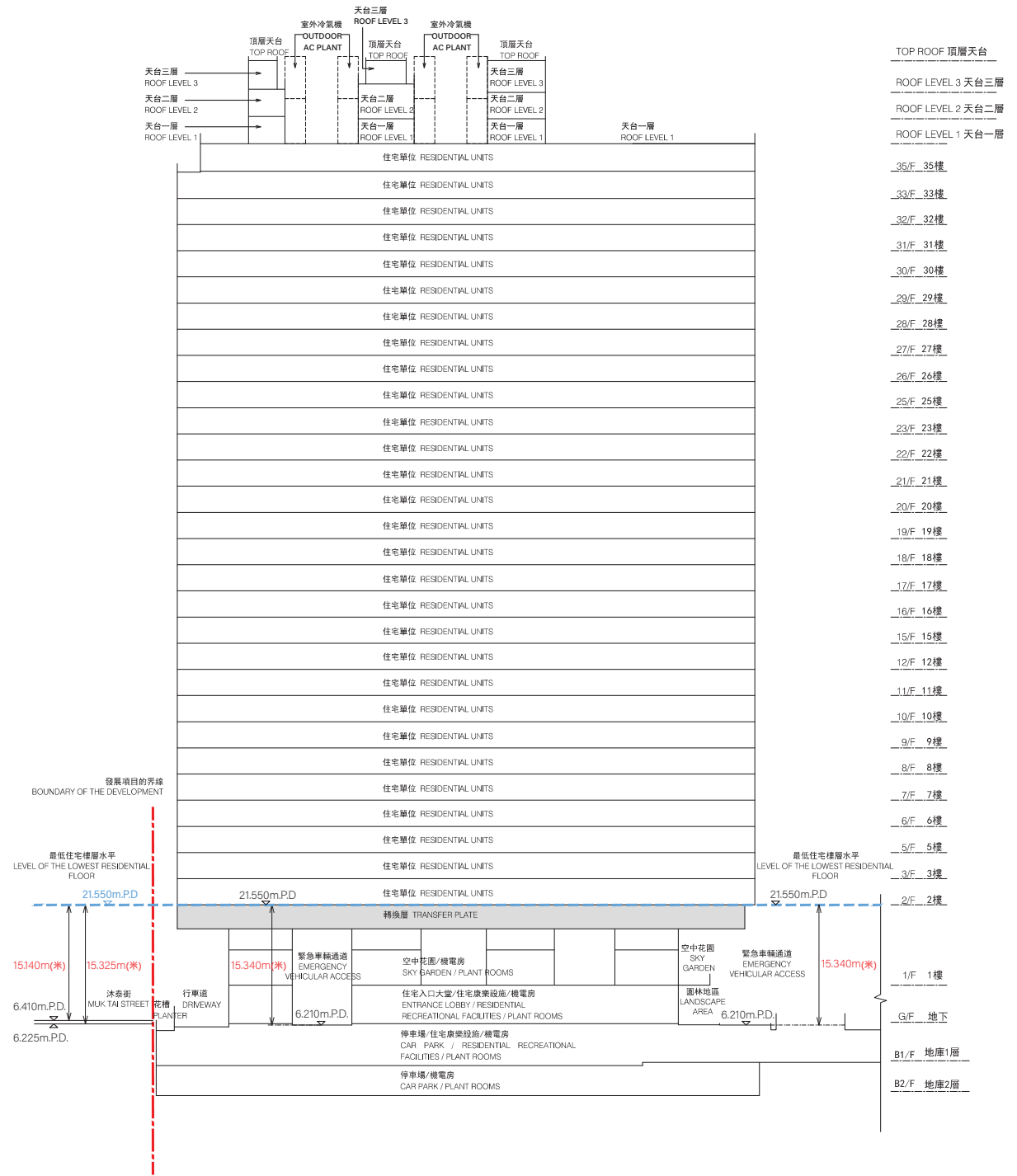
橫截面圖 A-A'
Cross - Section Plan A-A'

1. 毗鄰第1A座的一段緊急車輛通道為香港主水平基準以上6.210米。
 2. 毗鄰第1B座的一段緊急車輛通道為香港主水平基準以上6.210米。
 3. 毗鄰第1B座的一段沐泰街為香港主水平基準以上6.225米至6.410米。
1. The part of Emergency Vehicular Access adjacent to Tower 1A is 6.210 metres above the Hong Kong Principal Datum (m.P.D.).
 2. The part of Emergency Vehicular Access adjacent to Tower 1B is 6.210 metres above the Hong Kong Principal Datum (m.P.D.).
 3. The part of Muk Tai Street adjacent to Tower 1B is 6.225 metres to 6.410 metres above the Hong Kong Principal Datum (m.P.D.).



圖例 LEGEND

- 發展項目邊界線
Boundary of the Development
- 香港主水平基準以上高度(米)
Height in metres above the Hong Kong Principal Datum (m.P.D.)
- 藍色虛線為該建築物最低住宅層水平
Blue dotted line denotes the level of the lowest residential floor of the building



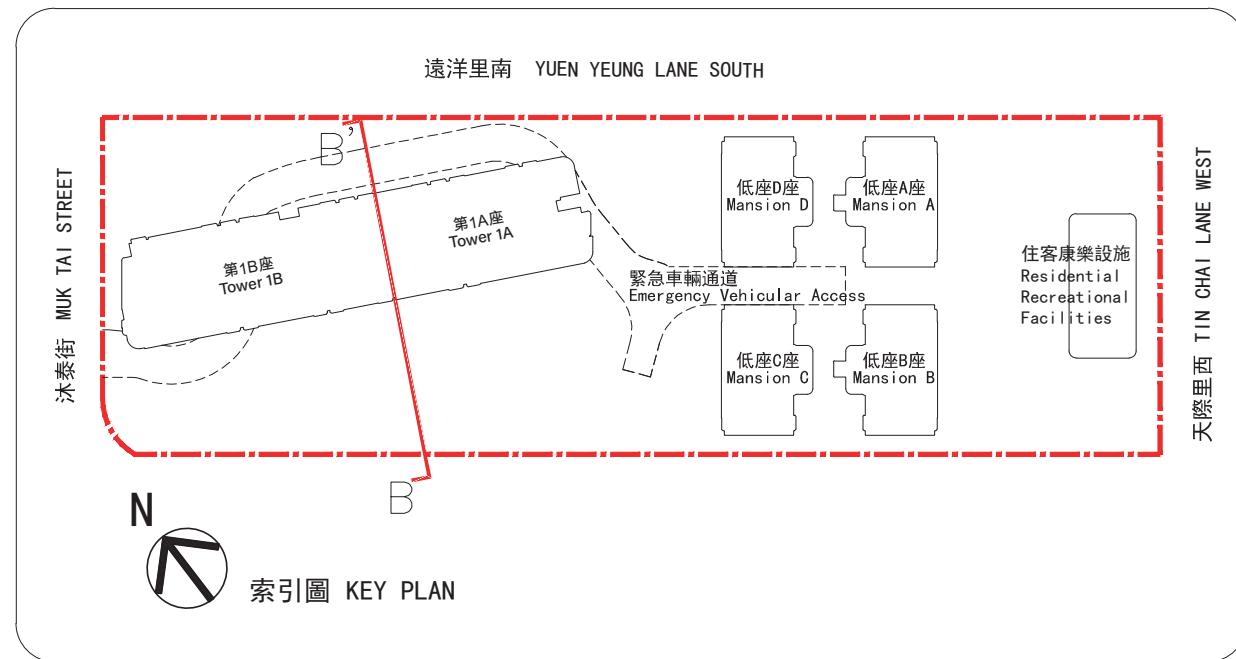
18 發展項目中的建築物的橫截面圖 CROSS-SECTION PLAN OF BUILDING IN THE DEVELOPMENT

第1A座及第1B座 TOWER 1A & TOWER 1B

橫截面圖 B-B'

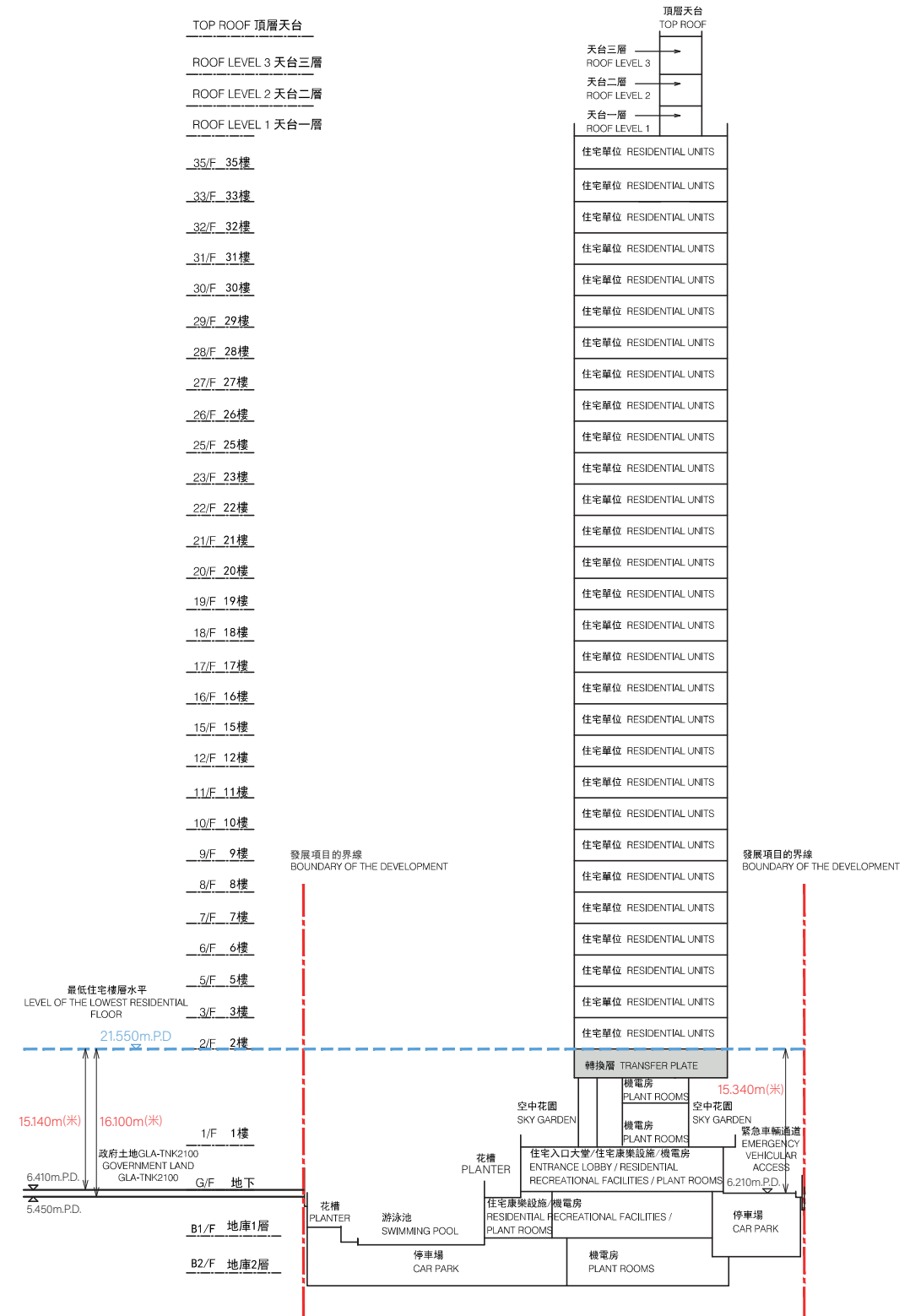
Cross - Section Plan B-B'

1. 毗鄰第1A座及第1B座的一段緊急車輛通道為香港主水平基準以上6.210米。
2. 毗鄰第1A座及第1B座的一段政府土地GLA-TNK2100為香港主水平基準以上5.450米至6.410米。
1. The part of Emergency Vehicular Access adjacent to Tower 1A & Tower 1B is 6.210 metres above the Hong Kong Principal Datum (m.P.D.).
2. The part of the Government Land GLA-TNK2100 adjacent to Tower 1A & Tower 1B is 5.450 metres to 6.410 metres above the Hong Kong Principal Datum (m.P.D.).



圖例 LEGEND

- 發展項目邊界線
Boundary of the Development
- 香港主水平基準以上高度 (米)
Height in metres above the Hong Kong Principal Datum (m.P.D.)
- 藍色虛線為該建築物最低住宅層水平
Blue dotted line denotes the level of the lowest residential floor of the building



18 發展項目中的建築物的橫截面圖 CROSS-SECTION PLAN OF BUILDING IN THE DEVELOPMENT

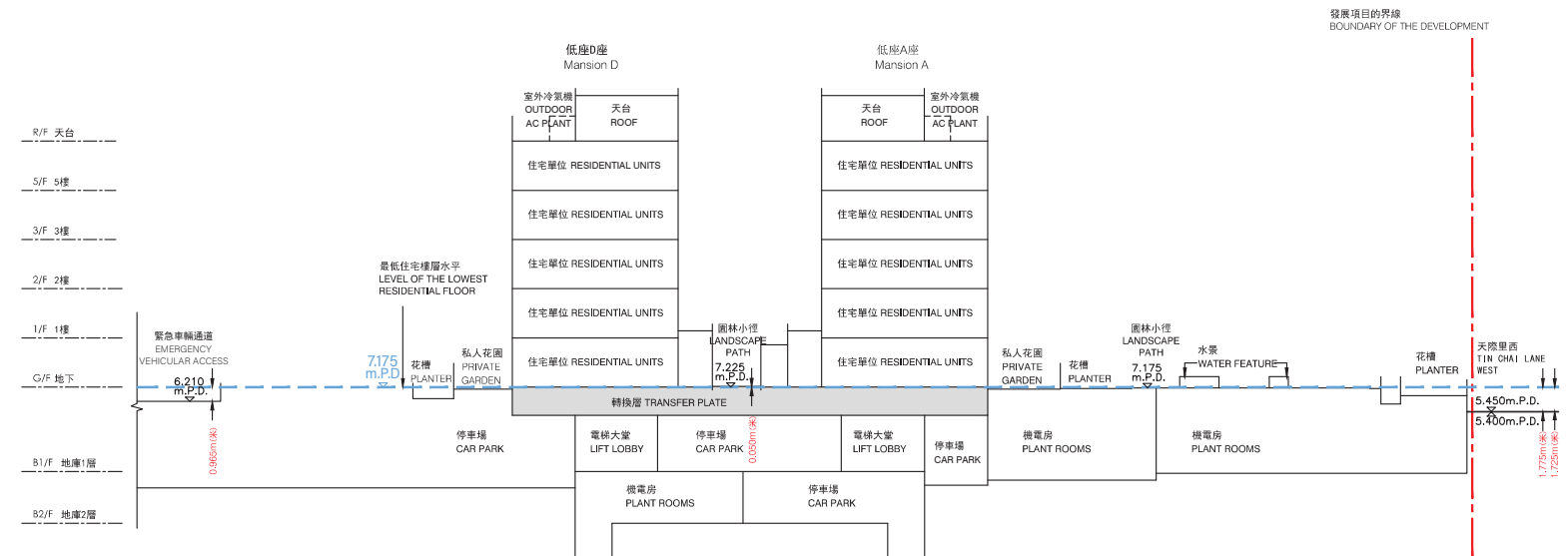
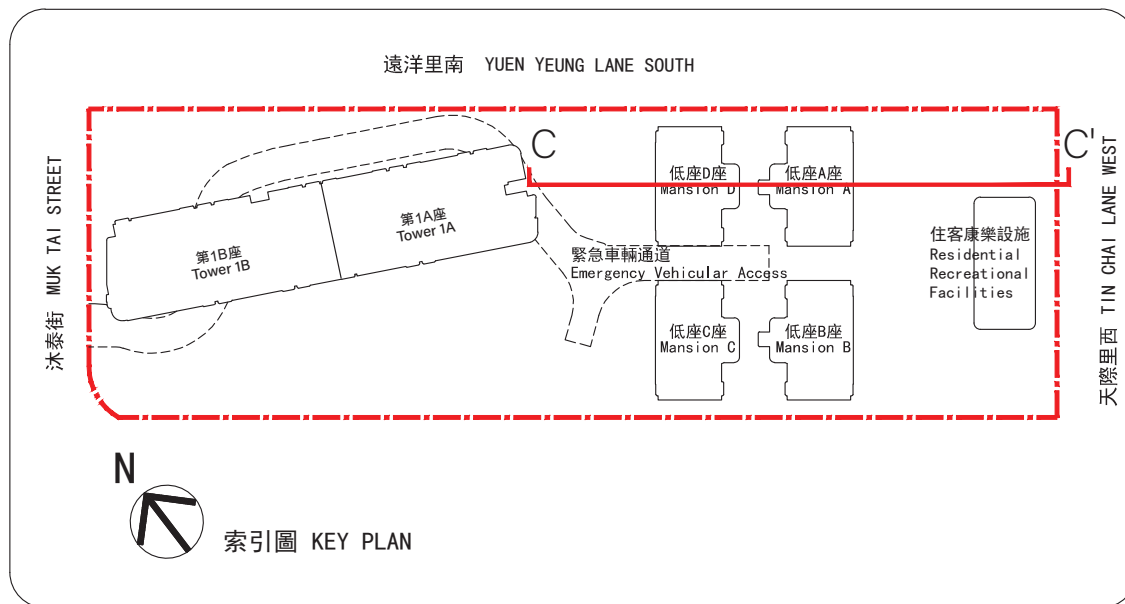
低座A座及低座D座 MANSION A & MANSION D

橫截面圖 C-C'

Cross - Section Plan C-C'

1. 毗鄰低座A座和低座D座的一段園林小徑為香港主水平基準以上7.225米。
2. 毗鄰低座A座的一段園林小徑為香港主水平基準以上7.175米
3. 毗鄰低座A座的一段天際里西為香港主水平基準以上5.400米至5.450米。
4. 毗鄰低座D座的一段緊急車輛通道為香港主水平基準以上6.210米。

1. The part of Landscape Path adjacent to Mansion A and Mansion D is 7.225 metres above the Hong Kong Principal Datum (m.P.D.).
2. The part of Landscape Path adjacent to Mansion A is 7.175 metres above the Hong Kong Principal Datum (m.P.D.).
3. The part of Tin Chai Lane West adjacent to Mansion A is 5.400 metres to 5.450 metres above the Hong Kong Principal Datum (m.P.D.).
4. The part of Emergency Vehicular Access adjacent to Mansion D is 6.210 metres above the Hong Kong Principal Datum (m.P.D.).



圖例 LEGEND

- 發展項目邊界線
Boundary of the Development
- 香港主水平基準以上高度(米)
Height in metres above the Hong Kong Principal Datum (m.P.D.)
- 藍色虛線為該建築物最低住宅層水平
Blue dotted line denotes the level of the lowest residential floor of the building

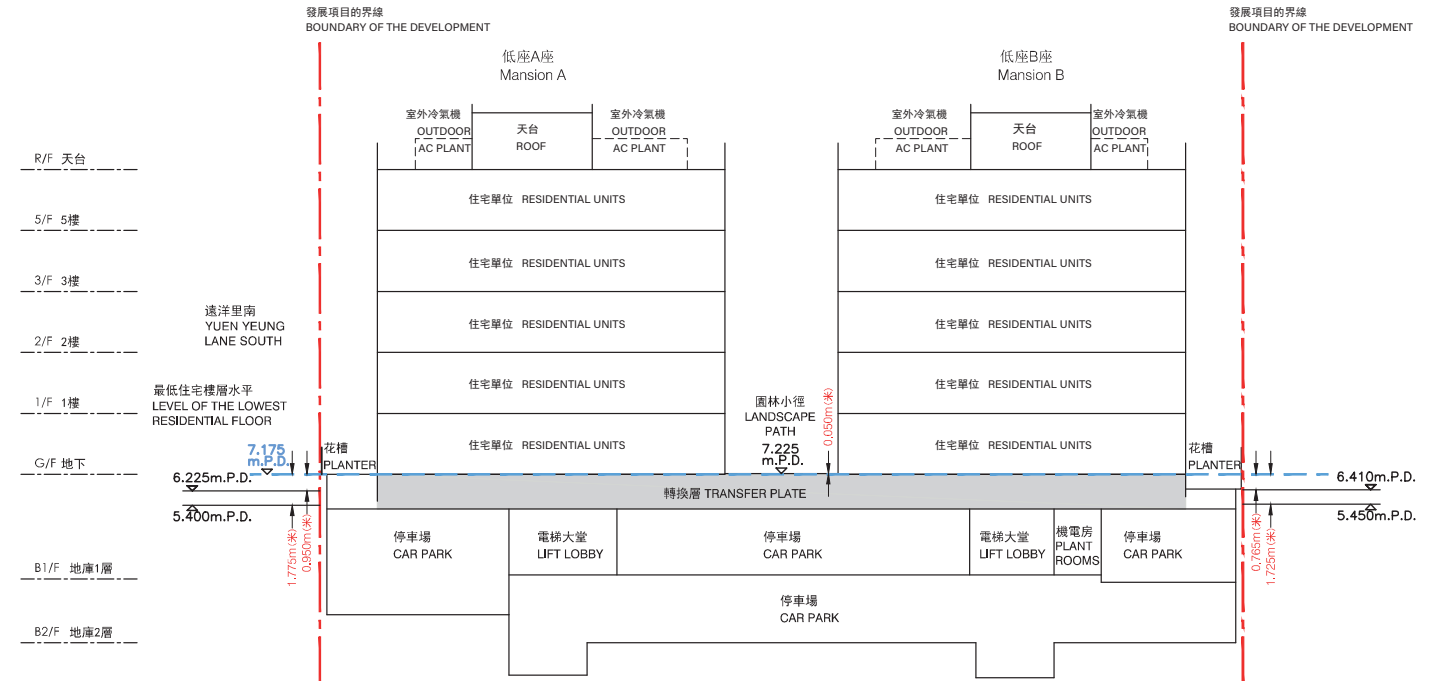
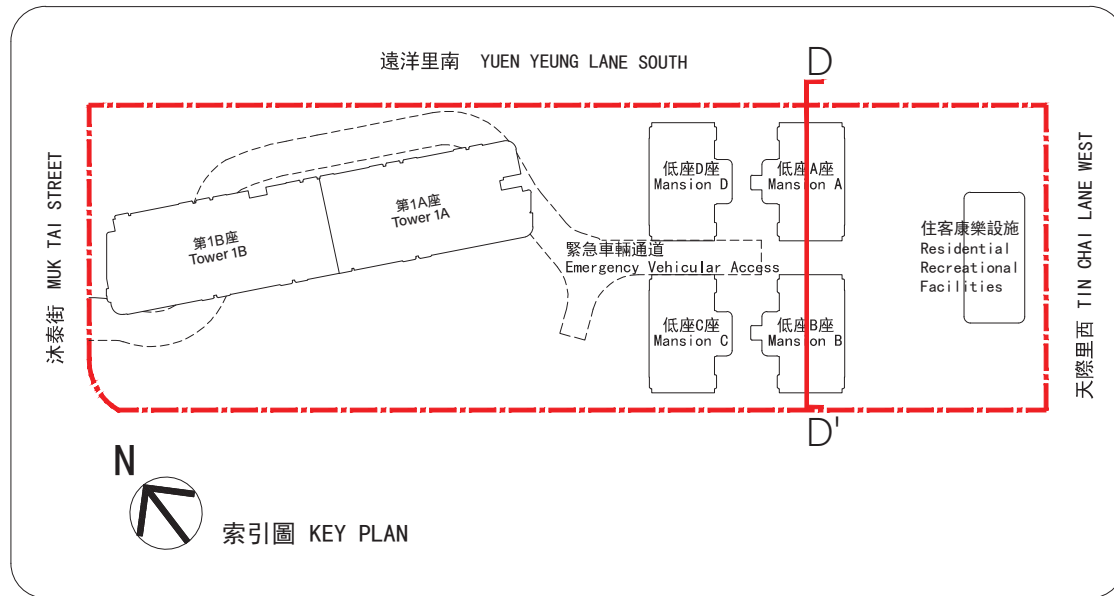
18 發展項目中的建築物的橫截面圖 CROSS-SECTION PLAN OF BUILDING IN THE DEVELOPMENT

低座A座及低座B座 MANSION A & MANSION B

橫截面圖 D-D'

Cross - Section Plan D-D'

1. 毗鄰低座A座的一段遠洋里南為香港主水平基準以上5.400米至6.225米。
2. 毗鄰低座A座和低座B座的一段園林小徑為香港主水平基準以上7.225米。
1. The part of Yuen Yeung Lane South adjacent to Mansion A is 5.400 metres to 6.225 metres above the Hong Kong Principal Datum (m.P.D.).
2. The part of Landscape Path adjacent to Mansion A and Mansion B is 7.225 metres above the Hong Kong Principal Datum (m.P.D.).



圖例 LEGEND

- 發展項目邊界線
Boundary of the Development
- 香港主水平基準以上高度(米)
Height in metres above the Hong Kong Principal Datum (m.P.D.)
- 藍色虛線為該建築物最低住宅層水平
Blue dotted line denotes the level of the lowest residential floor of the building

18 發展項目中的建築物的橫截面圖 CROSS-SECTION PLAN OF BUILDING IN THE DEVELOPMENT

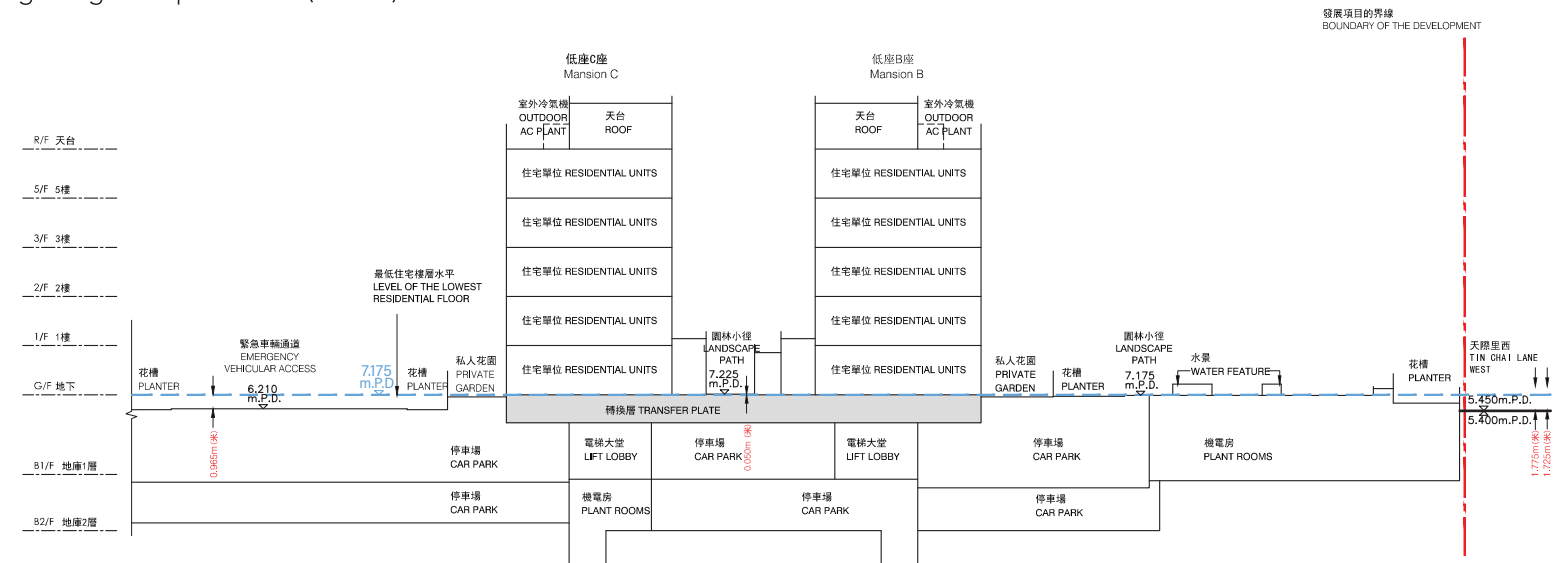
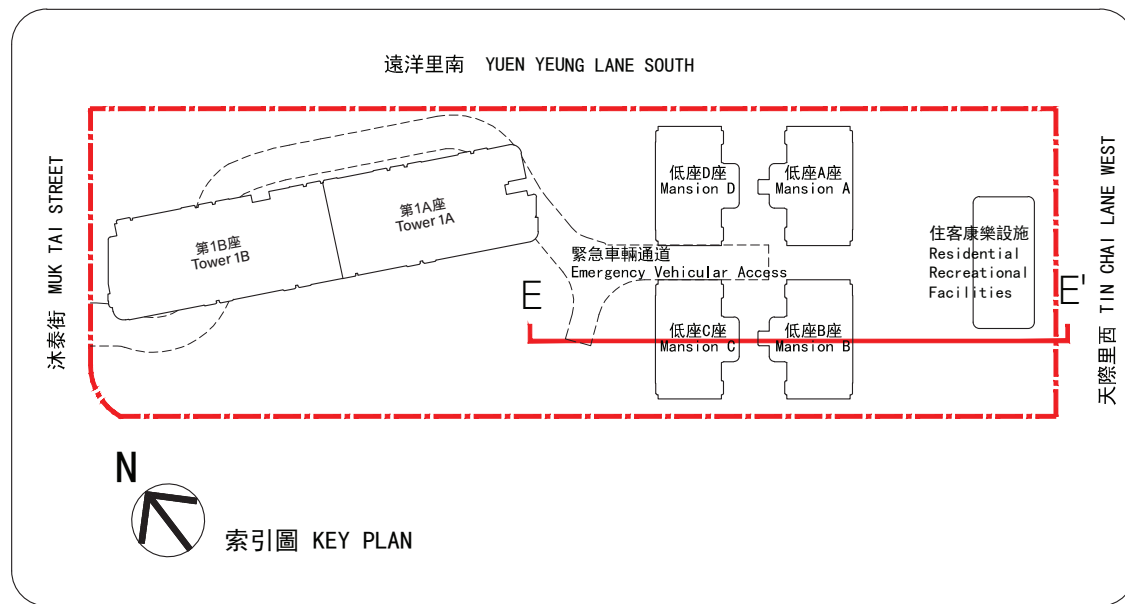
低座B座及低座C座 MANSION B & MANSION C

橫截面圖 E-E'

Cross - Section Plan E-E'

1. 毗鄰低座B座和低座C座的一段園林小徑為香港主水平基準以上7.225米。
2. 毗鄰低座B座的一段園林小徑為香港主水平基準以上7.175米。
3. 毗鄰低座B座的一段天際里西為香港主水平基準以上5.400米至5.450米。
4. 毗鄰低座C座的一段緊急車輛通道為香港主水平基準以上6.210米。

1. The part of Landscape Path adjacent to Mansion B and Mansion C is 7.225 metres above the Hong Kong Principal Datum (m.P.D.).
2. The part of Landscape Path adjacent to Mansion B is 7.175 metres above the Hong Kong Principal Datum (m.P.D.).
3. The part of Tin Chai Lane West adjacent to Mansion B is 5.400 metres to 5.450 metres above the Hong Kong Principal Datum (m.P.D.).
4. The part of Emergency Vehicular Access adjacent to Mansion C is 6.210 metres above the Hong Kong Principal Datum (m.P.D.).



圖例 LEGEND

- 發展項目邊界線
Boundary of the Development
- 香港主水平基準以上高度(米)
Height in metres above the Hong Kong Principal Datum (m.P.D.)
- 藍色虛線為該建築物最低住宅層水平
Blue dotted line denotes the level of the lowest residential floor of the building

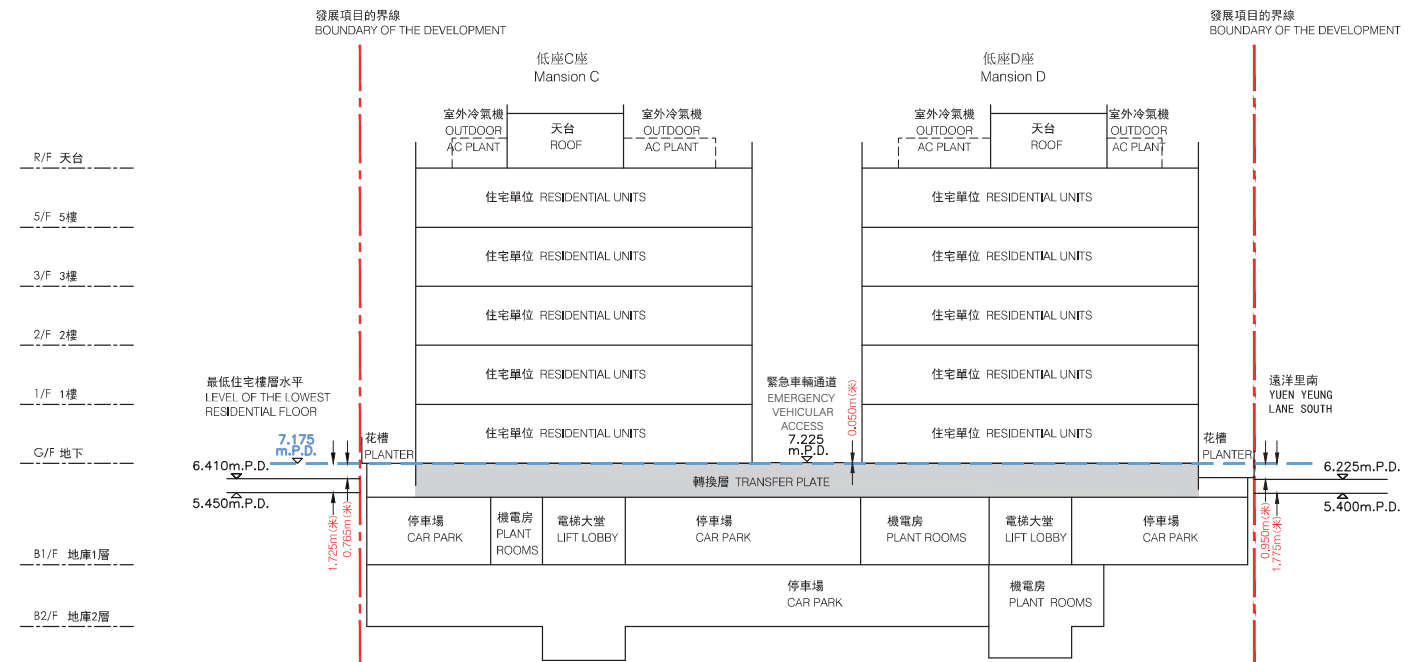
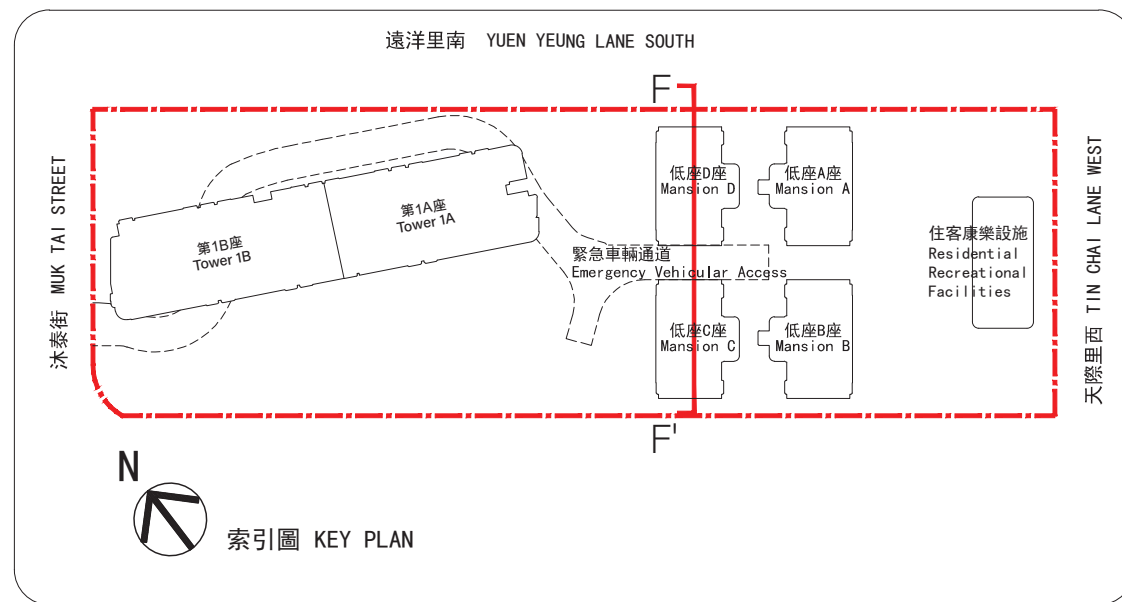
18 發展項目中的建築物的橫截面圖 CROSS-SECTION PLAN OF BUILDING IN THE DEVELOPMENT

低座C座及低座D座 MANSION C & MANSION D

橫截面圖 F-F'

Cross - Section Plan F-F'

1. 毗鄰低座D座的一段遠洋里南為香港主水平基準以上5.40米至6.225米。
2. 毗鄰低座C座和低座D座的一段緊急車輛通道為香港主水平基準以上7.225米。
1. The part of Yuen Yeung Lane South adjacent to Mansion D is 5.400 metres to 6.225 metres above the Hong Kong Principal Datum (m.P.D.).
2. The part of Emergency Vehicular Access adjacent to Mansion C and Mansion D is 7.225 metres above the Hong Kong Principal Datum (m.P.D.).



圖例 LEGEND

- 發展項目邊界線
Boundary of the Development
- 香港主水平基準以上高度(米)
Height in metres above the Hong Kong Principal Datum (m.P.D.)
- 藍色虛線為該建築物最低住宅層水平
Blue dotted line denotes the level of the lowest residential floor of the building