

LEGEND OF THE TERMS AND ABBREVIATIONS USED ON THE FLOOR PLANS:

樓面平面圖中所使用名詞及簡稱之圖例：

A/C Platform = Air Conditioning Platform 冷氣機平台

BAL. = Balcony 露台

BATH = Bathroom 浴室

B.R. = Bedroom 睡房

C.D. = Cable Duct 電纜槽

DN = Down 落

ELECT. RM. = Electrical Room 電房

FLAT = Flat 單位

H.R. = Hose Reel 消防喉轆

KIT. = Kitchen 廚房

LIV./DIN. = Living Room / Dining Room 客廳/飯廳

M.B.R. = Master Bedroom 主人睡房

P.D. = Pipe Duct 管道槽

R.C. COVER = Reinforced concrete cover 鋼筋混凝土上蓋

REFUSE RM. = Refuse Storage and Material Recovery Room 垃圾及物料回收室

STORE = Store Room 儲物間

STUDY = Study Room 書房

TEL. = Telephone Duct 電話線槽

U.P. = Utility Platform 工作平台

 = Temporary Refuge Space 臨時庇護處

Remarks:

1. There are architectural features, metal grilles and / or exposed pipes on the external walls of some of the floors. For details, please refer to the latest approved building plans.
2. Common pipes exposed, enclosed in cladding, architectural features and/or metal grilles are located at / adjacent to the balcony, utility platform and air-conditioning platform and / or floor at flat roof. For details, please refer to the latest approved building plans and / or approved drainage plans.
3. There are sunken slabs (for building services of units above) and / or ceiling bulkheads for the air-conditioning fittings and / or building services at some residential units.
4. There are exposed pipes installed in some bathrooms.
5. Balconies and utility platforms are non-enclosed areas.
6. The indications of fittings such as sinks, hobs, toilet bowls, wash basins, bath tubs etc. shown on the floor plans are indications of their approximate locations only and not indications of their actual size, designs and shapes.
7. The dimensions in the floor plans are all structural dimensions in millimeter.
8. Please refer to the first page of this section for legends of all terms and abbreviations shown in the floor plans.

備註:

1. 部分樓層外牆範圍設有建築裝飾、金屬格柵及/或外露喉管，詳細資料請參考最新批准的建築圖則。
2. 部分住宅單位的露台，工作平台及冷氣機平台，及/或外牆裝飾板，建築裝飾，及/或金屬格柵，及/或平台內藏之公用喉管，詳細資料請參考最新批准的建築圖則及/或排水設施圖。
3. 部分住宅單位天花板有跌級樓板（用以安裝樓上單位之屋宇設備）及/或假天花內裝置空調裝備及/或其他屋宇設備。
4. 部分浴室內裝有外露喉管。
5. 露台及工作平台為不可封閉的地方。
6. 平面圖所示之裝置如洗滌盤、煮食爐、坐廁、面盆、浴缸等只供展示其大約位置而非展示其實際大小、設計及形狀。
7. 樓面平面圖所列之尺寸數字為以毫米標示之建築結構尺寸。
8. 關於樓面平面圖上顯示之名詞及簡稱，請參閱本部份的首頁。

10

FLOOR PLANS OF RESIDENTIAL PROPERTIES IN THE DEVELOPMENT 發展項目的住宅物業的樓面平面圖

3/F FLOOR PLAN 3樓平面圖



比例： 0米/M 5米/M
SCALE:

Description 描述	Floor 樓層	Flat 單位																
		A	B	C	D	E	F	G	H	J	K	L	M	N	P	Q	R	S
Floor-to-Floor Height (mm) 層與層之間的高度(毫米)	3/F 3樓	2700, 3250, 3800	2900, 3000, 3050, 3250, 3350, 3450, 3600, 3800	2800, 2900, 3000, 3050, 3250, 3350, 3450, 3800	2800, 2900, 3000, 3050, 3250, 3350, 3450, 3800	2700, 2900, 3000, 3050, 3250, 3450, 3800	2800, 3000, 3250, 3350, 3800	2900, 3000, 3050, 3250, 3350	2900, 3000, 3050, 3250, 3350	2800, 3250	2800, 2900, 3000, 3050, 3250, 3350, 3450, 3800	2800, 2900, 3000, 3050, 3250, 3350, 3450, 3800	2800, 2900, 3000, 3050, 3250, 3350, 3450, 3800	2900, 3250, 3400, 3800	2900, 3250, 3400	2800, 2900, 3000, 3050, 3250, 3350, 3450, 3800	2800, 2900, 3000, 3050, 3250, 3350, 3450, 3800	
Thickness of the Floor Slabs (excluding plaster) (mm) 樓板(不包括灰泥)的厚度(毫米)		150	150	150	150	150	150	150	150	150	150	150	150	150	150	150	150	150

1. The internal areas of the residential properties on the upper floors will generally be slightly larger than those on the lower floors because of the reducing thickness of the structural walls on the upper floors (Note: Not applicable).

Note:

- Please refer to page 27 of this sales brochure for the meanings of the terms and abbreviations shown on the floor plan.
- The dimensions in the floor plans are all structural dimensions in millimeter.

1. 因住宅物業的較高樓層的結構牆的厚度遞減，較高樓層的內部面積，一般比較低樓層的內部面積稍大(備註：不適用)。

備註:

- 樓面平面圖中顯示之名詞及簡稱之詞彙表詳列於本售樓說明書第27頁。
- 樓面平面圖所列之尺寸數字為以毫米標示之建築結構尺寸。

10

FLOOR PLANS OF RESIDENTIAL PROPERTIES IN THE DEVELOPMENT 發展項目的住宅物業的樓面平面圖

5/F-12/F AND 15/F-22/F FLOOR PLAN 5樓-12樓及15樓-22樓平面圖



比例： 0米/M 5米/M
SCALE:

Description 描述	Floor 樓層	Flat 單位																
		A	B	C	D	E	F	G	H	J	K	L	M	N	P	Q	R	S
Floor-to-Floor Height (mm) 層與層之間的高度(毫米)	5/F-12/F and 15/F-21/F 5樓-12樓及 15樓-21樓	3250	3250	3250	3250	3250	3250	3250	3250	3250	3250	3250	3250	3250	3250	3250	3250	3250
	22/F 22樓	3250	3250	3250	3250	2800, 2950, 3000, 3150, 3250, 3350, 3800	2800, 2950, 3250, 3350, 3500, 3700, 3800	2700, 2800, 2900, 3000, 3050, 3150, 3250, 3450, 3500, 3700	2900, 3250, 3500	3250	3250	3250	3250	3250	3250	3250	3250	3250
Thickness of the Floor Slabs (excluding plaster) (mm) 樓板(不包括灰泥)的厚度(毫米)	5/F-12/F and 15/F-22/F 5樓-12樓及 15樓-22樓	150	150	150	150	150	150	150	150	150	150	150	150	150	150	150	150	150

1. The internal areas of the residential properties on the upper floors will generally be slightly larger than those on the lower floors because of the reducing thickness of the structural walls on the upper floors (Note: Not applicable).

Note:

- Please refer to page 27 of this sales brochure for the meanings of the terms and abbreviations shown on the floor plan.
- The dimensions in the floor plans are all structural dimensions in millimeter.

1. 因住宅物業的較高樓層的結構牆的厚度遞減，較高樓層的內部面積，一般比較低樓層的內部面積稍大(備註：不適用)。

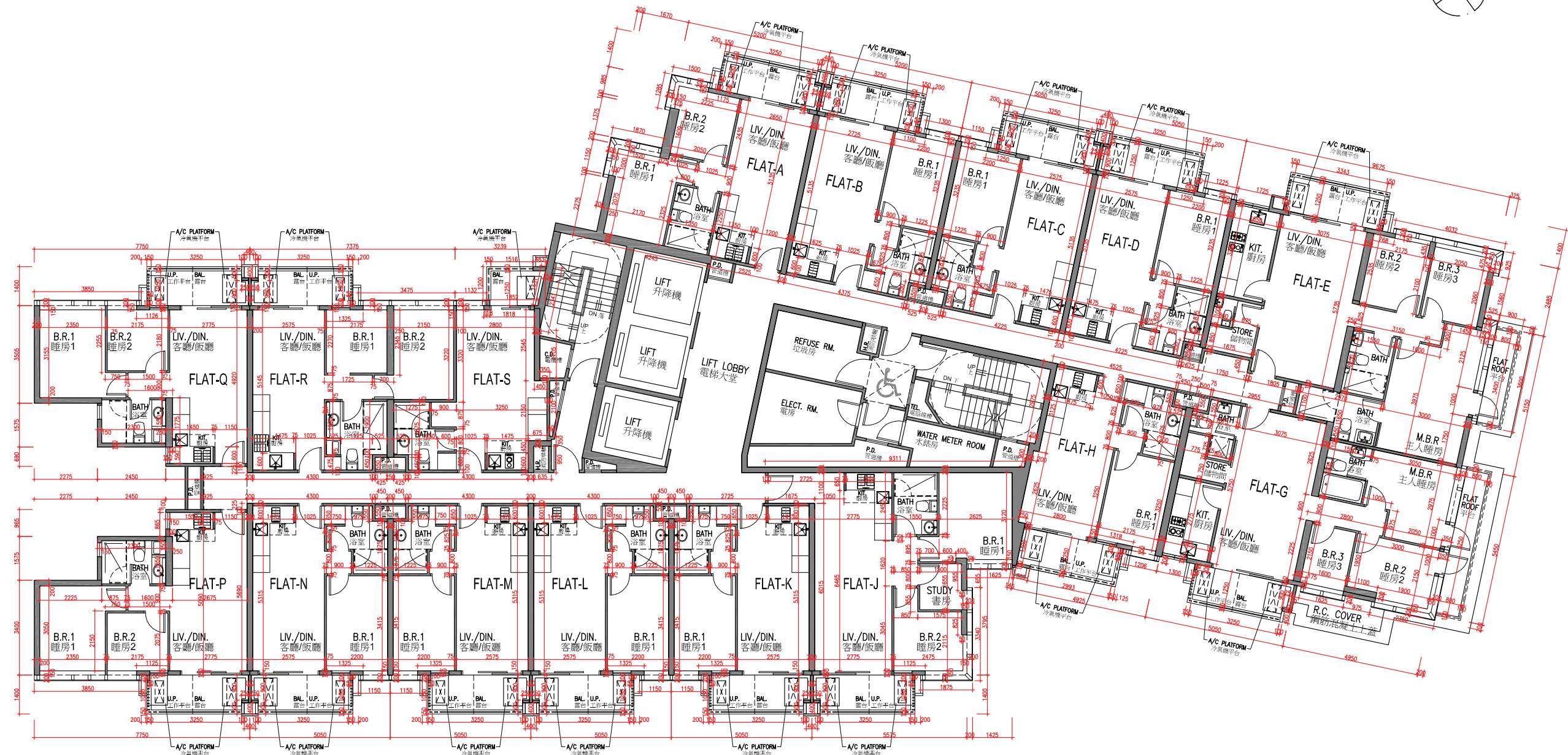
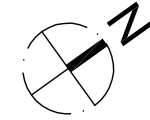
備註:

- 樓面平面圖中顯示之名詞及簡稱之詞彙表詳列於本售樓說明書第27頁。
- 樓面平面圖所列之尺寸數字為以毫米標示之建築結構尺寸。

10

FLOOR PLANS OF RESIDENTIAL PROPERTIES IN THE DEVELOPMENT 發展項目的住宅物業的樓面平面圖

23/F FLOOR PLAN 23樓平面圖



比例: 0米/M 5米/M
SCALE:

Description 描述	Floor 樓層	Flat 單位																
		A	B	C	D	E	G	H	J	K	L	M	N	P	Q	R	S	
Floor-to-Floor Height (mm) 層與層之間的高度(毫米)	23/F 23樓	3250	3250	3250	3250	2800, 2950, 3050, 3250, 3350, 3500, 3700, 3800	2950, 3050, 3250, 3450, 3500, 3700, 3800	3250, 3600	3250	3250	3250	3250	3250	3250	3250	3250	3250	3250
Thickness of the Floor Slabs (excluding plaster) (mm) 樓板(不包括灰泥)的厚度(毫米)		150	150	150	150	150	150	150	150	150	150	150	150	150	150	150	150	150

1. The internal areas of the residential properties on the upper floors will generally be slightly larger than those on the lower floors because of the reducing thickness of the structural walls on the upper floors (Note: Not applicable).

Note:

- Please refer to page 27 of this sales brochure for the meanings of the terms and abbreviations shown on the floor plan.
- The dimensions in the floor plans are all structural dimensions in millimeter.

1. 因住宅物業的較高樓層的結構牆的厚度遞減，較高樓層的內部面積，一般比較低樓層的內部面積稍大(備註：不適用)。

備註:

- 樓面平面圖中顯示之名詞及簡稱之詞彙表詳列於本售樓說明書第27頁。
- 樓面平面圖所列之尺寸數字為以毫米標示之建築結構尺寸。

10

FLOOR PLANS OF RESIDENTIAL PROPERTIES IN THE DEVELOPMENT 發展項目的住宅物業的樓面平面圖

25/F FLOOR PLAN 25樓平面圖



比例: 0米/M 5米/M
SCALE:

Description 描述	Floor 樓層	Flat 單位																
		A	B	C	D	E	G	H	J	K	L	M	N	P	Q	R	S	
Floor-to-Floor Height (mm) 層與層之間的高度(毫米)	25/F 25樓	3250	3250	3250	2900, 3000, 3150, 3250, 3500, 3600	2700, 2850, 2900, 2950, 3000, 3150, 3250, 3150, 3250, 3350, 3700	2750, 2850, 2900, 2950, 3000, 3150, 3250, 3350, 3500, 3600, 3700	2800, 2900, 3000, 3050, 3150, 3250	3250	3250	3250	3250	3250	3250	3250	3250	3250	3250
Thickness of the Floor Slabs (excluding plaster) (mm) 樓板(不包括灰泥)的厚度(毫米)		150	150	150	150	150	150	150	150	150	150	150	150	150	150	150	150	150

1. The internal areas of the residential properties on the upper floors will generally be slightly larger than those on the lower floors because of the reducing thickness of the structural walls on the upper floors (Note: Not applicable).

Note:

- Please refer to page 27 of this sales brochure for the meanings of the terms and abbreviations shown on the floor plan.
- The dimensions in the floor plans are all structural dimensions in millimeter.

1. 因住宅物業的較高樓層的結構牆的厚度遞減，較高樓層的內部面積，一般比較低樓層的內部面積稍大(備註：不適用)。

備註:

- 樓面平面圖中顯示之名詞及簡稱之詞彙表詳列於本售樓說明書第27頁。
- 樓面平面圖所列之尺寸數字為以毫米標示之建築結構尺寸。

10

FLOOR PLANS OF RESIDENTIAL PROPERTIES IN THE DEVELOPMENT 發展項目的住宅物業的樓面平面圖

26/F FLOOR PLAN 26樓平面圖



比例： 0米/M 5米/M
SCALE:

Description 描述	Floor 樓層	Flat 單位													
		A	B	C	D	H	J	K	L	M	N	P	Q	R	S
Floor-to-Floor Height (mm) 層與層之間的高度(毫米)	26/F 26樓	3250, 3800	3250, 3450, 3500, 3600, 3700	3250, 3450, 3500, 3600, 3700	3250, 3500, 3600, 3650, 3700, 3800	3250, 3750, 3650, 3600, 3500, 3800, 3700	3250, 3700	3250, 3450, 3500, 3600, 3700	3250, 3450, 3500, 3600, 3700	3250, 3450, 3500, 3600, 3700	3250, 3450, 3500, 3600, 3700	3250, 3600, 3650	3250, 3600, 3650	3250, 3450, 3500, 3600, 3700	3250, 3450, 3500, 3600, 3700
Thickness of the Floor Slabs (excluding plaster) (mm) 樓板(不包括灰泥)的厚度(毫米)		150	150	150	150	150	150	150	150	150	150	150	150	150	150

- The internal areas of the residential properties on the upper floors will generally be slightly larger than those on the lower floors because of the reducing thickness of the structural walls on the upper floors (Note: Not applicable).

Note:

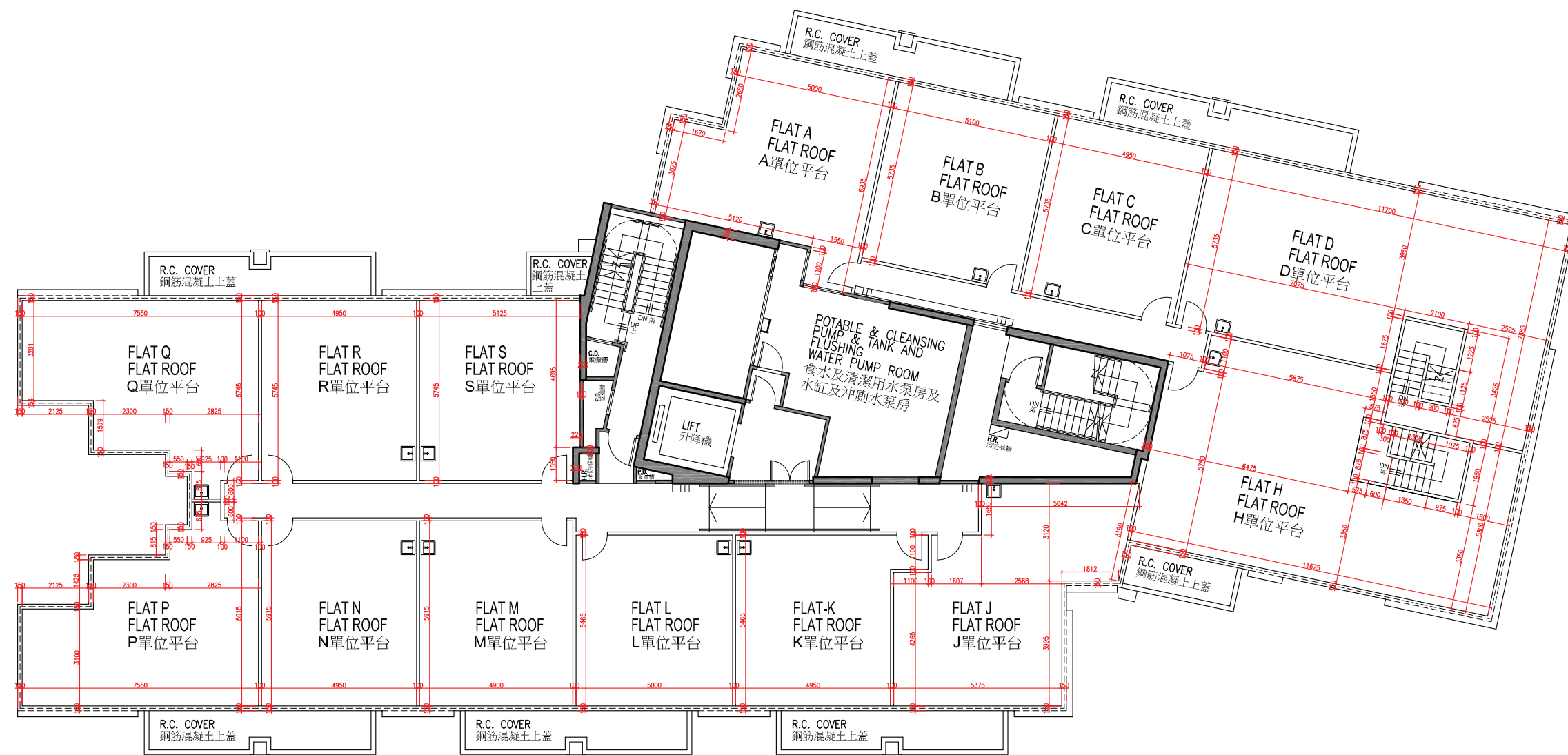
- Please refer to page 27 of this sales brochure for the meanings of the terms and abbreviations shown on the floor plan.
- The dimensions in the floor plans are all structural dimensions in millimeter.

- 因住宅物業的較高樓層的結構牆的厚度遞減，較高樓層的內部面積，一般比較低樓層的內部面積稍大(備註：不適用)。

備註:

- 樓面平面圖中顯示之名詞及簡稱之詞彙表詳列於本售樓說明書第27頁。
- 樓面平面圖所列之尺寸數字為以毫米標示之建築結構尺寸。

ROOF PLAN 天台平面圖



比例： 0米/M 5米/M
SCALE:

Note:

1. For the location of the roof, it was specified as flat roof in the general building plans of the development approved by the Building Authority. In practice, it is a roof and its area is calculated under the roof.

備註:

1. 有關天台的位置在該發展項目經建築事務監督批准的建築圖則上列為平台，實際上其用途為天台，其面積將以天台計算。

Description 描述	Floor 樓層	Flat 單位													
		A	B	C	D	H	J	K	L	M	N	P	Q	R	S
Floor-to-Floor Height (mm) 層與層之間的高度(毫米)	Roof 天台	Not applicable 不適用	Not applicable 不適用	Not applicable 不適用	Not applicable 不適用	Not applicable 不適用	Not applicable 不適用	Not applicable 不適用	Not applicable 不適用	Not applicable 不適用	Not applicable 不適用	Not applicable 不適用	Not applicable 不適用	Not applicable 不適用	Not applicable 不適用
Thickness of the Floor Slabs (excluding plaster) (mm) 樓板(不包括灰泥)的厚度(毫米)		Not applicable 不適用	Not applicable 不適用	Not applicable 不適用	Not applicable 不適用	Not applicable 不適用	Not applicable 不適用	Not applicable 不適用	Not applicable 不適用	Not applicable 不適用	Not applicable 不適用	Not applicable 不適用	Not applicable 不適用	Not applicable 不適用	Not applicable 不適用

1. The internal areas of the residential properties on the upper floors will generally be slightly larger than those on the lower floors because of the reducing thickness of the structural walls on the upper floors (Note: Not applicable).

Note:

- Please refer to page 27 of this sales brochure for the meanings of the terms and abbreviations shown on the floor plan.
- The dimensions in the floor plans are all structural dimensions in millimeter.

1. 因住宅物業的較高樓層的結構牆的厚度遞減，較高樓層的內部面積，一般比較低樓層的內部面積稍大(備註：不適用)。

備註:

- 樓面平面圖中顯示之名詞及簡稱之詞彙表詳列於本售樓說明書第27頁。
- 樓面平面圖所列之尺寸數字為以毫米標示之建築結構尺寸。