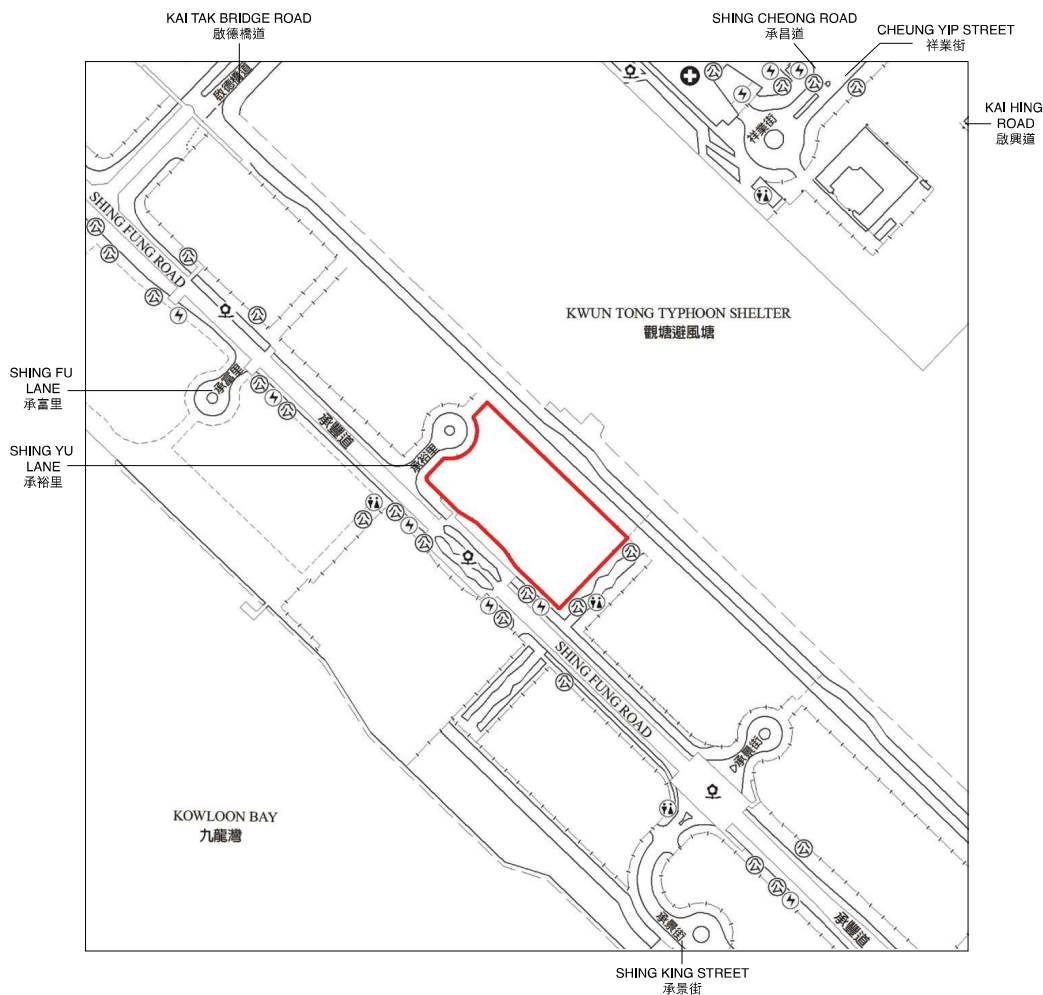


07 LOCATION PLAN OF THE DEVELOPMENT






發展項目的所在位置圖




This Location Plan is prepared by the Vendor with reference to the Survey Sheet No. T11-NE-C dated 3rd August 2022 from Survey and Mapping Office of the Lands Department with adjustments where necessary.

此所在位置圖是由賣方參考2022年8月3日及出版之地政總署測繪處之測繪圖（圖幅編號T11-NE-C）擬備，有需要處經修正處理。

Notation 圖例

-  Power plant (including electricity sub-stations)
發電廠（包括電力分站）
-  Hospital
醫院
-  Public convenience
公廁
-  Public utility installation
公用事業設施裝置
-  Public park
公園

 Location of the Development
發展項目的位置

Scale: 0M/米 250M/米
比例： 

Notes:

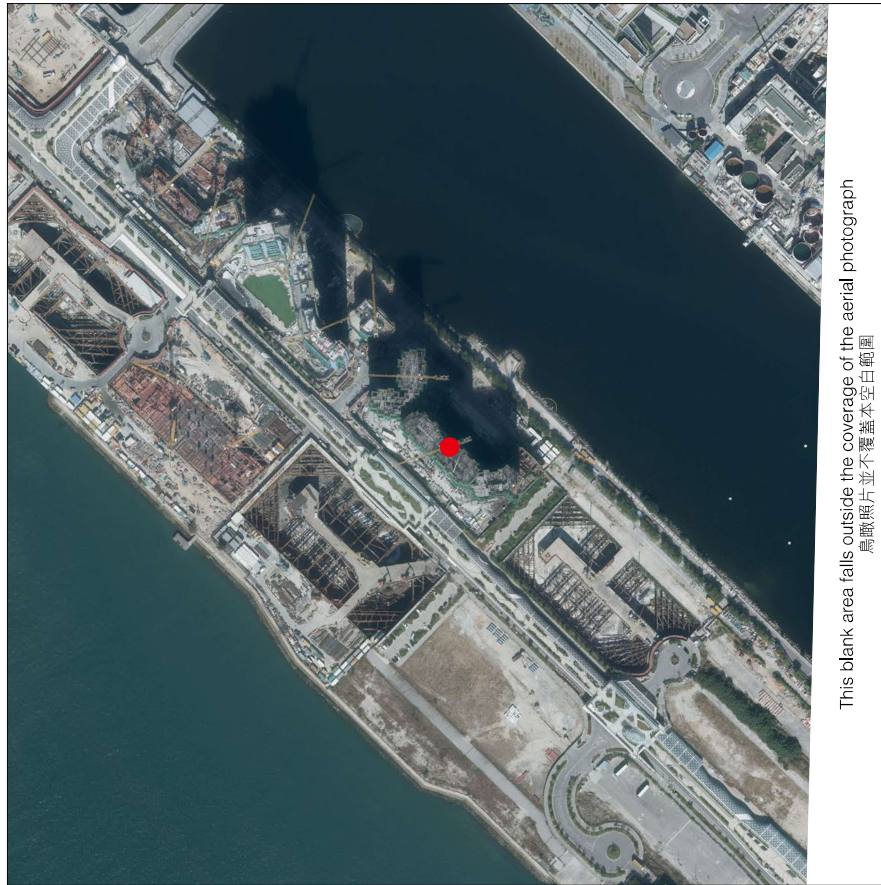
1. The Vendor advises prospective purchasers to conduct an on-site visit for a better understanding of the development site, its surrounding environment and the public facilities nearby.
2. The plan may show more than the area required under the Residential Properties (First-hand Sales) Ordinance due to the technical reason that the boundary of the Development is irregular.
3. The Map is provided by the Hong Kong GeoData Store and intellectual property rights are owned by the Government of the HKSAR.

備註：

1. 賣方建議準買家到該發展地盤作實地考察，以對該發展地盤、其周邊地區環境及附近的公共設施有較佳了解。
2. 由於發展項目的邊界不規則的技術原因，此圖所顯示的範圍可能超過《一手住宅物業銷售條例》所規定的範圍。
3. 地圖由香港地理數據站提供，香港特別行政區政府為知識產權擁有人。

08 AERIAL PHOTOGRAPH OF THE PHASE

期數的鳥瞰照片



● Location of the Phase
期數的位置

Adopted from part of the aerial photograph taken by the Survey and Mapping Office, Lands Department at a flying height of 6,900 feet, photo no. E142998C, date of flight: 3rd December, 2021.

摘錄自地政總署測繪處在6,900呎的飛行高度拍攝之鳥瞰照片，照片編號E142998C，飛行日期：2021年12月3日。

Survey and Mapping Office, Lands Department, The Government of HKSAR © Copyright reserved - reproduction by permission only.

香港特別行政區政府地政總署測繪處©版權所有，未經許可，不得複製。

The aerial photograph is provided by the Hong Kong GeoData Store and intellectual property rights are owned by the Government of the HKSAR.

鳥瞰照片由香港地理數據站提供，香港特別行政區政府為知識產權擁有人。

Notes:

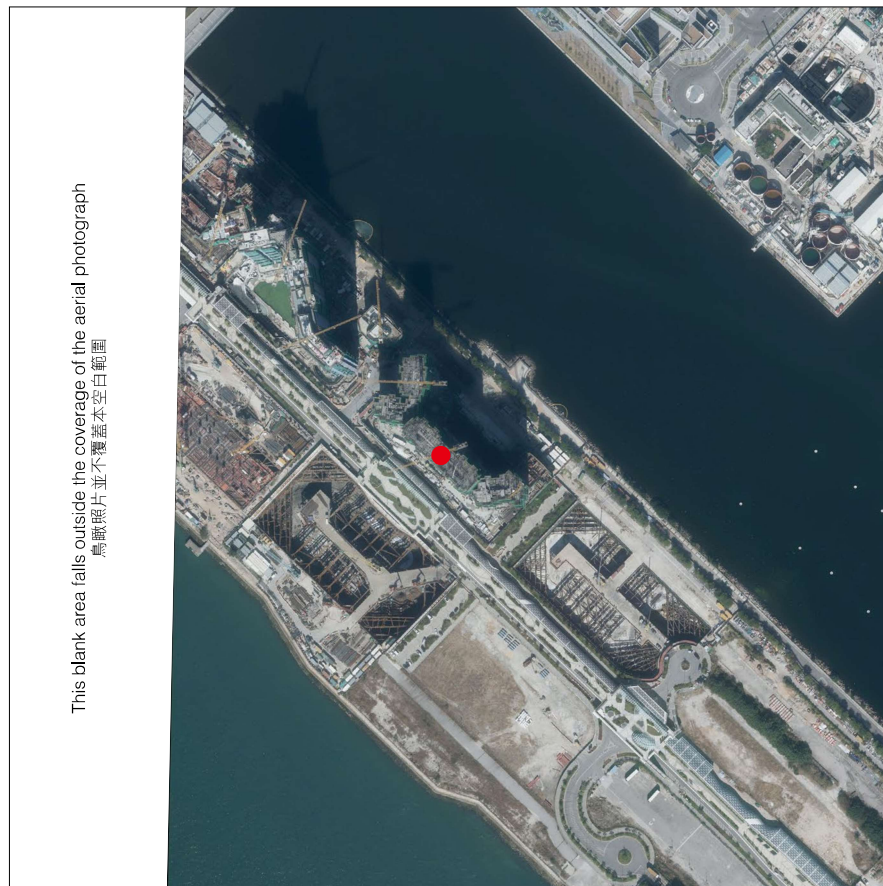
1. Copy of the aerial photograph of the Phase is available for free inspection at the sales offices during opening hours.
2. The aerial photograph may show more than the area required under the Residential Properties (First-hand Sales) Ordinance due to technical reason that the boundary of the Phase is irregular.

備註：

1. 期數的鳥瞰照片之副本可於售樓處開放時間內免費查閱。
2. 由於期數的邊界不規則的技術原因，此鳥瞰照片所顯示的範圍可能超過《一手住宅物業銷售條例》所規定的範圍。

08 AERIAL PHOTOGRAPH OF THE PHASE

期數的鳥瞰照片



● Location of the Phase
期數的位置

Adopted from part of the aerial photograph taken by the Survey and Mapping Office, Lands Department at a flying height of 6,900 feet, photo no. E142999C, date of flight: 3rd December, 2021.

摘錄自地政總署測繪處在6,900呎的飛行高度拍攝之鳥瞰照片，照片編號E142999C，飛行日期：2021年12月3日。

Survey and Mapping Office, Lands Department, The Government of HKSAR © Copyright reserved - reproduction by permission only.

香港特別行政區政府地政總署測繪處©版權所有，未經許可，不得複製。

The aerial photograph is provided by the Hong Kong GeoData Store and intellectual property rights are owned by the Government of the HKSAR.

鳥瞰照片由香港地理數據站提供，香港特別行政區政府為知識產權擁有人。

Notes:

1. Copy of the aerial photograph of the Phase is available for free inspection at the sales offices during opening hours.
2. The aerial photograph may show more than the area required under the Residential Properties (First-hand Sales) Ordinance due to technical reason that the boundary of the Phase is irregular.

備註：

1. 期數的鳥瞰照片之副本可於售樓處開放時間內免費查閱。
2. 由於期數的邊界不規則的技術原因，此鳥瞰照片所顯示的範圍可能超過《一手住宅物業銷售條例》所規定的範圍。