

Legend 圖例

ALUM. FINS	= ALUMINIUM FINS	= 鋁質裝飾線
A.F.	= ARCHITECTURAL FEATURE	= 建築裝飾
A/C HOOD	= AIR CONDITIONER HOOD	= 空調機遮簷
A/C PLATFORM	= AIR CONDITIONER PLATFORM	= 空調機平台
A.D.	= AIR DUCT	= 風管槽
ALUM. CLADDING	= ALUMINIUM CLADDING	= 鋁質飾面板
B.	= BATHROOM	= 浴室
BAL.	= BALCONY	= 露台
B.R.	= BEDROOM	= 睡房
DIN.	= DINING ROOM	= 飯廳
EL. D.	= ELECTRICAL DUCT	= 電線槽
ELV.	= EXTRA LOW VOLTAGE CABLE DUCT	= 特低壓電線槽
EMR.	= ELECTRICAL METER ROOM	= 電錶房
H.R.	= HOSE REEL	= 消防喉轆
H/L	= HIGH LEVEL	= 高位
KIT.	= KITCHEN	= 廚房

LAV.	= LAVATORY	= 洗手間
LIV.	= LIVING ROOM	= 客廳
M.B.	= MASTER BATHROOM	= 主人浴室
MBR.	= MASTER BEDROOM	= 主人睡房
OPEN KIT.	= OPEN KITCHEN	= 開放式廚房
OPEN KIT.*	= OPEN KITCHEN (*INDUCTION HOBS ONLY)	= 開放式廚房 (*只供電磁爐)
P.D.	= PIPE DUCT	= 管道
PA.	= PLANTER	= 花槽
R.C. PLINTH	= REINFORCED CONCRETE PLINTH	= 混凝土底座
RS & MRR	= REFUSE STORAGE AND MATERIAL RECOVERY ROOM	= 垃圾及物料回收室
STONE CLADDING	= STONE CLADDING	= 石製飾面板
U.P.	= UTILITY PLATFORM	= 工作平台
UTIL.	= UTILITY ROOM	= 工作間
W.M.C.	= WATER METER CABINET	= 水錶櫃

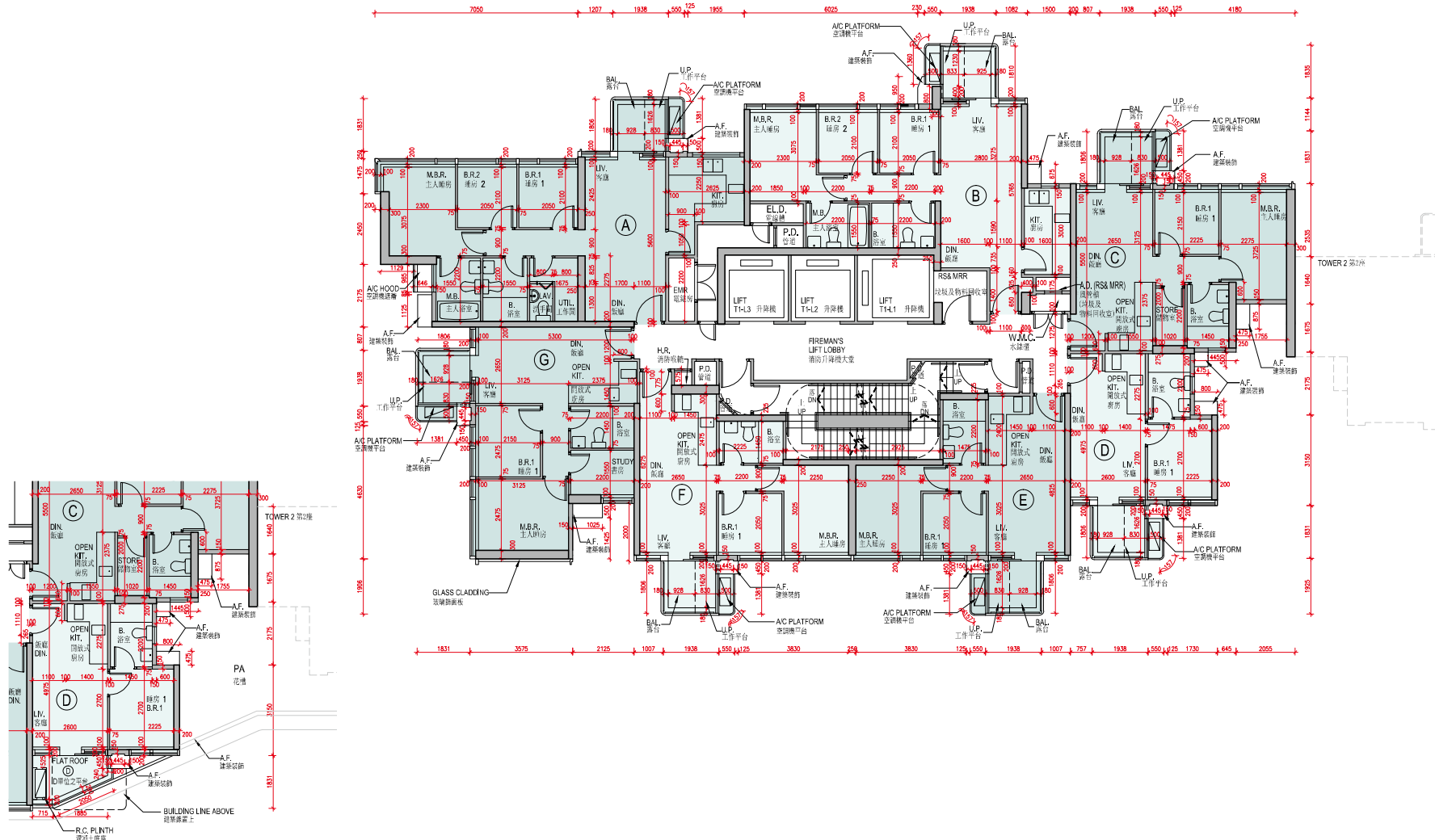
適用於本章節所有平面圖的備註：

- 部份樓層外牆設有建築裝飾、金屬格柵及/或外露喉管。詳細資料請參考最新批准的建築圖則。
- 部份單位的露台及/或工作平台及/或天台及/或平台及/或空調機平台及/或外牆或其鄰近地方設有外露及/或內藏於飾板的公用喉管。詳細資料請參考最新批准的建築圖則及/或排水設施圖。
- 部分住宅單位天花板有跌級樓板（用以安裝樓上單位之機電設備）及/或天花假陣內裝置空調裝備及/或其他機電設備。
- 露台、工作平台及空調機平台為不可封閉的地方。
- 樓面平面圖所示之裝置及設備如洗滌盤、煮食爐、坐廁、面盆、浴缸等只供展示其大約位置而非展示其實際大小、設計及形狀。
- 部份住宅單位外的空調機平台將會放置該單位的一部或多部空調機室外機。該等空調機室外機的位置可能發出熱力及/或聲音。期數之空調機室外機的位置可能修改，並受制於相關政府部門之批准。詳細資料請參考最新批准的建築圖則。

11 FLOOR PLANS OF RESIDENTIAL PROPERTIES IN THE PHASE

期數的住宅物業的樓面平面圖

Tower 1 2/F-3/F, 5/F-12/F, 15/F-23/F, 25/F-29/F
第1座 2樓至3樓、5樓至12樓、15樓至23樓及25樓至29樓



Tower 1 2/F Part Plan
第1座 2樓局部平面圖

Scale: 0M/米 5M/米
 比例:

	Tower 座數	Floor 樓層	Flat 單位						
			A	B	C	D	E	F	G
The thickness of the floor slabs (excluding plaster) of each residential property (mm) 每個住宅物業的樓板（不包括灰泥）的厚度（毫米）	Tower 1 第1座	2/F-3/F, 5/F-12/F, 15/F-23/F & 25/F-28/F 2樓至3樓、5樓至12樓、 15樓至23樓及25樓至28樓	150	150	150, 200	150	150	150	150
		29/F 29樓	150, 200, 500	150, 200, 500	150, 200	150	150	150	200, 500
The floor-to-floor height (refers to the height between the top surface of the structural slab of a floor and the top surface of the structural slab of its immediate upper floor) of each residential property (mm) 每個住宅物業的層與層之間的高度（指該樓層之石屎地台面與上一層石屎地台面之高度距離）（毫米）	Tower 1 第1座	2/F-3/F, 5/F-12/F, 15/F-23/F & 25/F-28/F 2樓至3樓、5樓至12樓、 15樓至23樓及25樓至28樓	3150	3150	3150	3150	3150	3150	3150
		29/F 29樓	3100, 3350, 3400, 3450, 3500, 3650, 3750, 3800,	3050, 3100, 3350, 3400, 3450, 3800	3400	3400	3400	3100, 3350, 3400, 3750	3100, 3150, 3350, 3400, 3450, 3650

The internal areas of the residential properties on the upper floors will generally be slightly larger than those on the lower floors because of the reducing thickness of the structural walls on the upper floors. (Note: Not applicable to the Phase)

Notes:

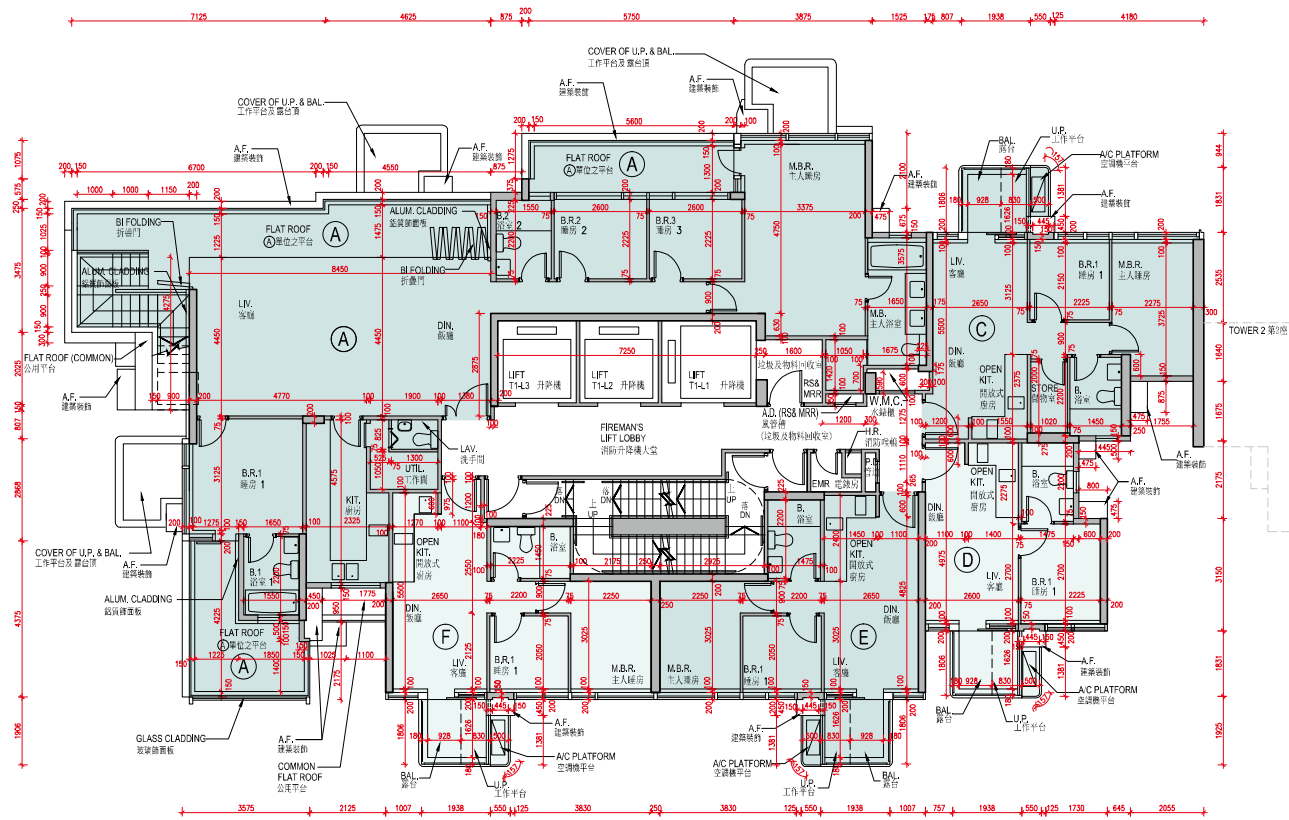
- The dimensions in the floor plans are all structural dimensions in millimetre.
- Please refer to the first page of the section "Floor Plans of Residential Properties in the Phase" for legend for the terms and abbreviations shown on the floor plan.

因住宅物業的較高樓層的結構牆的厚度遞減，較高樓層的內部面積，一般比較低樓層的內部面積稍大。（註：不適用於期數）

備註：

- 樓面平面圖之尺規所列數字為以毫米標示之建築結構尺寸。
- 樓面平面圖中顯示之名詞及簡稱之圖例請參閱「期數的住宅物業的樓面平面圖」一節的首頁。

Tower 1 30/F
第1座 30樓



Scale: 0M/米 5M/米
比例:

	Tower 座數	Floor 樓層	Flat 單位				
			A	C	D	E	F
The thickness of the floor slabs (excluding plaster) of each residential property (mm) 每個住宅物業的樓板（不包括灰泥）的厚度（毫米）	Tower 1 第1座	30/F 30樓	200, 250, 450	200	200	200, 450	200, 450
The floor-to-floor height (refers to the height between the top surface of the structural slab of a floor and the top surface of the structural slab of its immediate upper floor) of each residential property (mm) 每個住宅物業的層與層之間的高度（指該樓層之石屎地台面與上一層石屎地台面之高度距離）（毫米）			3400, 3650, 3700, 3750, 3950, 4000	3400, 3450, 3650, 3700	3400, 3450, 3650, 3700	3400, 3650, 3700, 3750, 3900, 4000	3400, 3650, 3700, 3750, 4000

The internal areas of the residential properties on the upper floors will generally be slightly larger than those on the lower floors because of the reducing thickness of the structural walls on the upper floors. (Note: Not applicable to the Phase)

Notes:

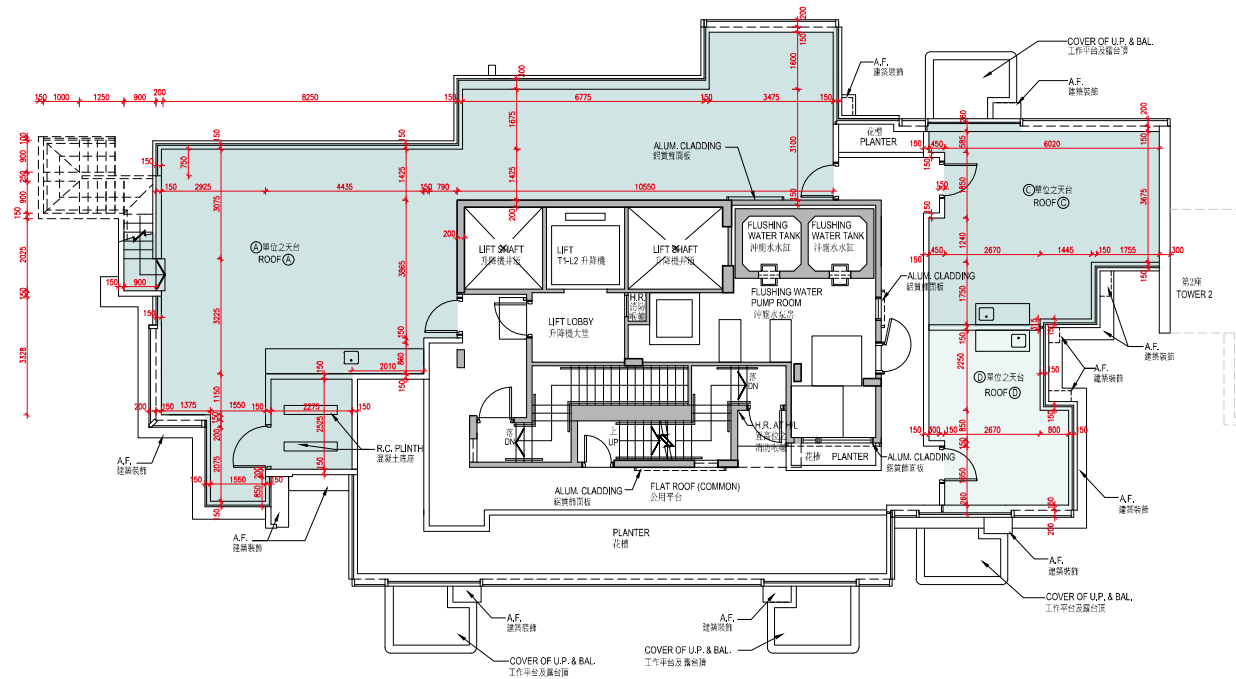
1. The dimensions in the floor plans are all structural dimensions in millimetre.
2. Please refer to the first page of the section "Floor Plans of Residential Properties in the Phase" for legend for the terms and abbreviations shown on the floor plan.

因住宅物業的較高樓層的結構牆的厚度遞減，較高樓層的內部面積，一般比較低樓層的內部面積稍大。（註：不適用於期數）

備註：

1. 樓面平面圖之尺規所列數字為以毫米標示之建築結構尺寸。
2. 樓面平面圖中顯示之名詞及簡稱之圖例請參閱「期數的住宅物業的樓面平面圖」一節的首頁。

Tower 1 Roof
第1座 天台



Scale: 0M/米 5M/米
比例:

	Tower 座數	Floor 樓層	Flat 單位		
			A	C	D
The thickness of the floor slabs (excluding plaster) of each residential property (mm) 每個住宅物業的樓板（不包括灰泥）的厚度（毫米）	Tower 1 第1座	Roof 天台	Not applicable 不適用		
The floor-to-floor height (refers to the height between the top surface of the structural slab of a floor and the top surface of the structural slab of its immediate upper floor) of each residential property (mm) 每個住宅物業的層與層之間的高度（指該樓層之石屎地台面與上一層石屎地台面之高度距離）（毫米）					

The internal areas of the residential properties on the upper floors will generally be slightly larger than those on the lower floors because of the reducing thickness of the structural walls on the upper floors. (Note: Not applicable to the Phase)

Notes:

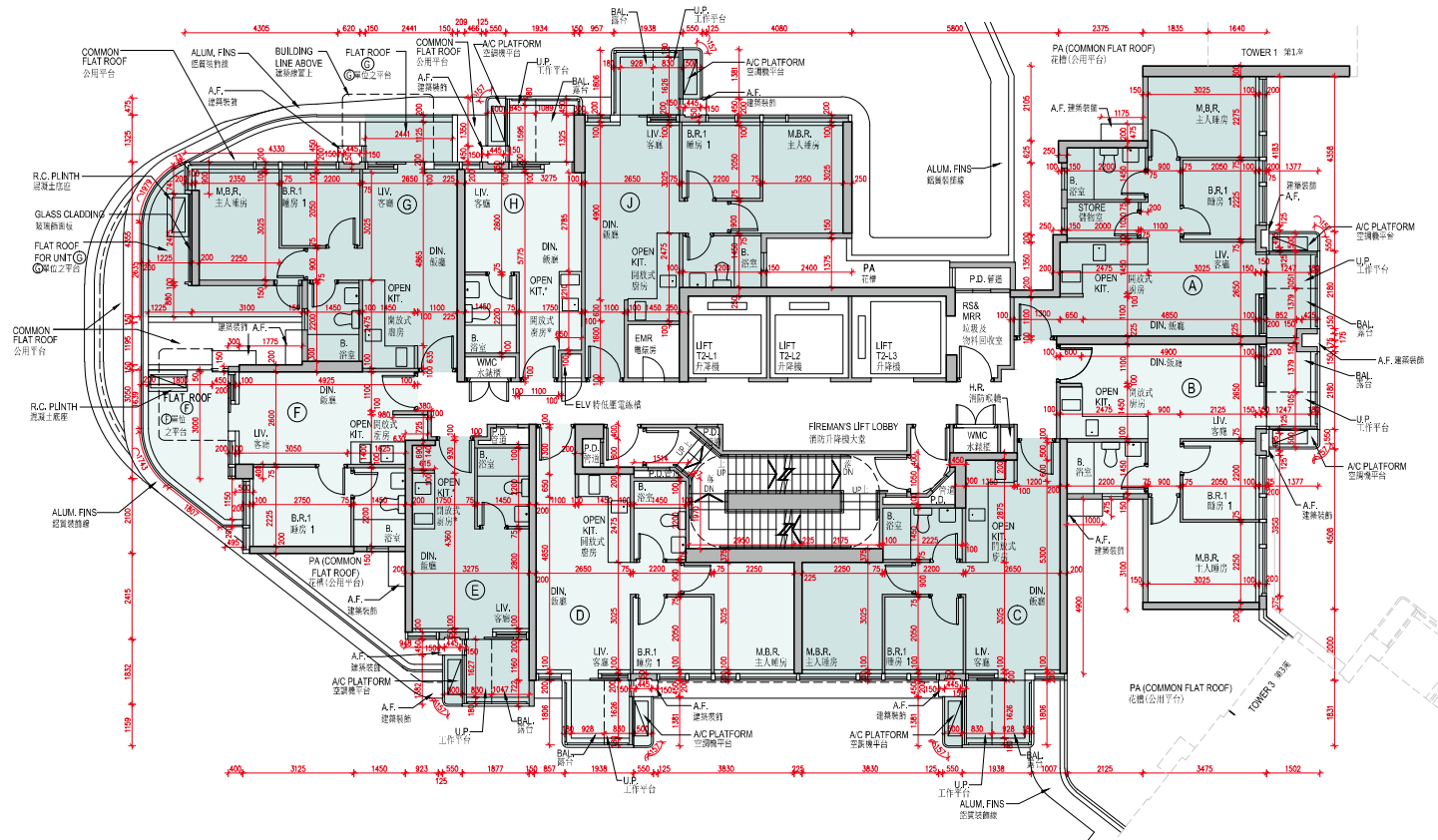
1. The dimensions in the floor plans are all structural dimensions in millimetre.
2. Please refer to the first page of the section "Floor Plans of Residential Properties in the Phase" for legend for the terms and abbreviations shown on the floor plan.

因住宅物業的較高樓層的結構牆的厚度遞減，較高樓層的內部面積，一般比較低樓層的內部面積稍大。（註：不適用於期數）

備註：

1. 樓面平面圖之尺規所列數字為以毫米標示之建築結構尺寸。
2. 樓面平面圖中顯示之名詞及簡稱之圖例請參閱「期數的住宅物業的樓面平面圖」一節的首頁。

Tower 2 2/F
第2座 2樓



Scale: 0M/米 5M/米
 比例:

	Tower 座數	Floor 樓層	Flat 單位								
			A	B	C	D	E	F	G	H	J
The thickness of the floor slabs (excluding plaster) of each residential property (mm) 每個住宅物業的樓板（不包括灰泥）的厚度（毫米）	Tower 2 第2座	2/F 2樓	150, 200	150	150	150	150	150	150	150	150
The floor-to-floor height (refers to the height between the top surface of the structural slab of a floor and the top surface of the structural slab of its immediate upper floor) of each residential property (mm) 每個住宅物業的層與層之間的高度（指該樓層之石屎地台面與上一層石屎地台面之高度距離）（毫米）			3400, 3450, 3650, 3700	3350, 3450, 3650, 3700	3400, 3450, 3650, 3700	3350, 3450, 3650, 3700	3350, 3400, 3450, 3650, 3700	3350, 3400, 3450, 3650, 3700	3350, 3450, 3650, 3700	3350, 3450, 3650, 3700	3350, 3450, 3650, 3700

The internal areas of the residential properties on the upper floors will generally be slightly larger than those on the lower floors because of the reducing thickness of the structural walls on the upper floors. (Note: Not applicable to the Phase)

Notes:

1. The dimensions in the floor plans are all structural dimensions in millimetre.
2. Please refer to the first page of the section "Floor Plans of Residential Properties in the Phase" for legend for the terms and abbreviations shown on the floor plan.

因住宅物業的較高樓層的結構牆的厚度遞減，較高樓層的內部面積，一般比較低樓層的內部面積稍大。（註：不適用於期數）

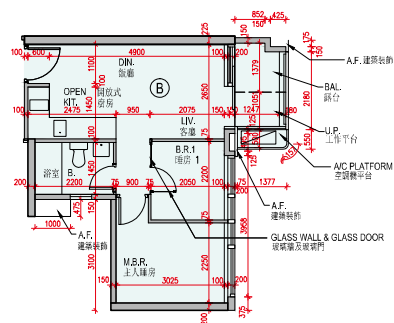
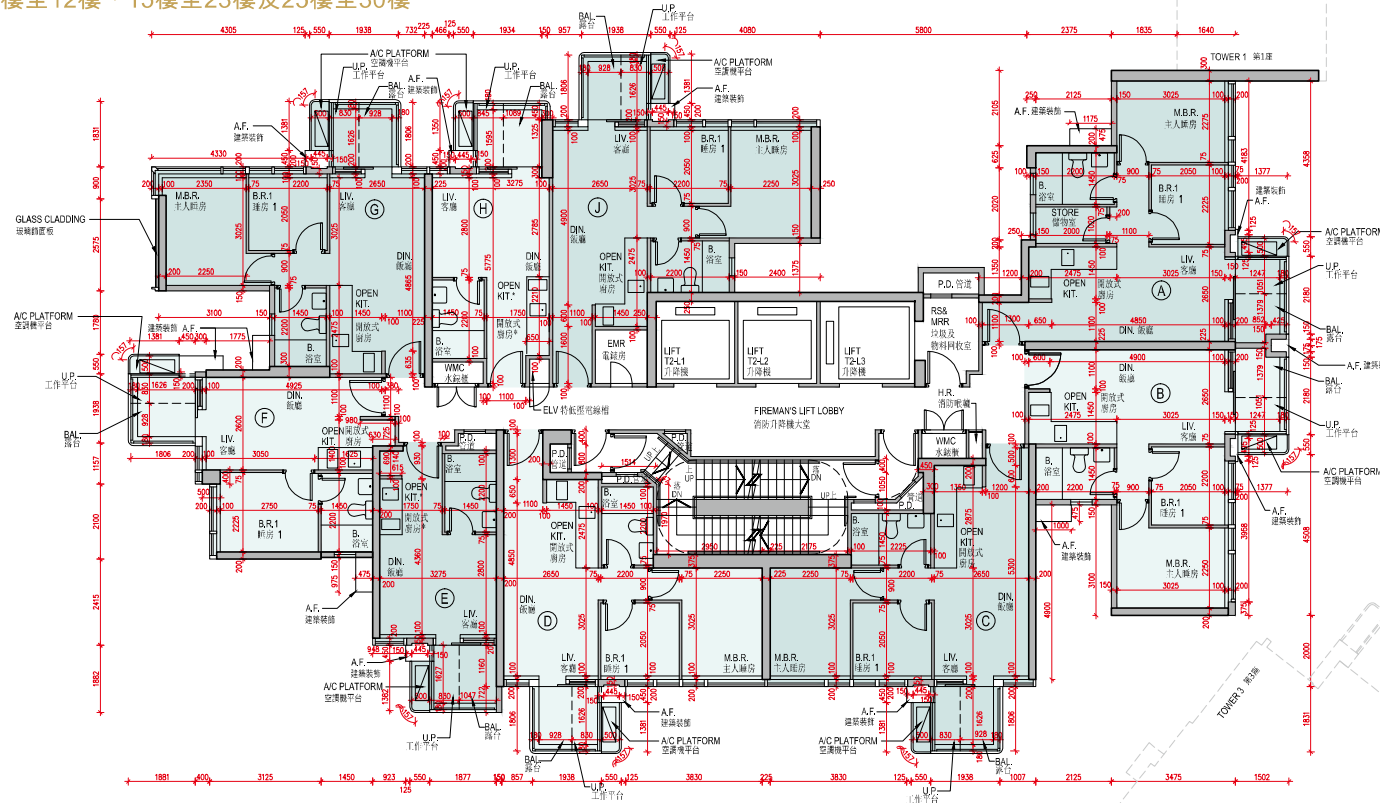
備註：

1. 樓面平面圖之尺規所列數字為以毫米標示之建築結構尺寸。
2. 樓面平面圖中顯示之名詞及簡稱之圖例請參閱「期數的住宅物業的樓面平面圖」一節的首頁。

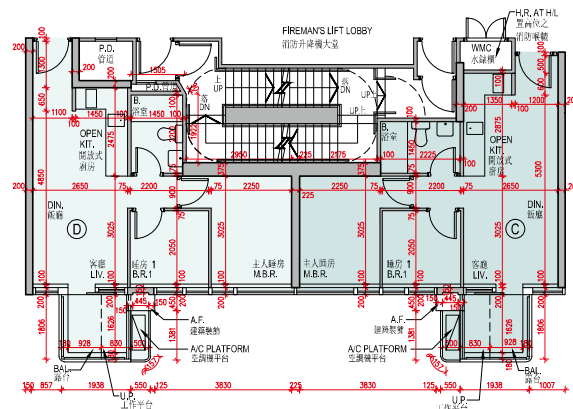
11 FLOOR PLANS OF RESIDENTIAL PROPERTIES IN THE PHASE

期數的住宅物業的樓面平面圖

Tower 2 3/F, 5/F-12/F, 15/F-23/F & 25/F-30/F
第2座 3樓、5樓至12樓、15樓至23樓及25樓至30樓



Tower 2 28/F Part Plan
第2座 28樓 局部平面圖



Tower 2 30/F Part Plan
第2座 30樓 局部平面圖

Scale: 0M/米 5M/米
 比例:

	Tower 座數	Floor 樓層	Flat 單位								
			A	B	C	D	E	F	G	H	J
The thickness of the floor slabs (excluding plaster) of each residential property (mm) 每個住宅物業的樓板（不包括灰泥）的厚度（毫米）		3/F, 5/F-12/F, 15/F-23/F & 25/F-29/F 3樓、5樓至12樓、 15樓至23樓及25樓至29樓	150, 200	150	150	150	150	150	150	150	150
		30/F 30樓	200	200	200, 450	200, 450	200, 450	200	200	200, 450	200, 450
The floor-to-floor height (refers to the height between the top surface of the structural slab of a floor and the top surface of the structural slab of its immediate upper floor) of each residential property (mm) 每個住宅物業的層與層之間的高度（指該樓層之石屎地台面與上一層石屎地台面之高度距離）（毫米）	Tower 2 第2座	3/F, 5/F-12/F, 15/F-23/F & 25/F-28/F 3樓、5樓至12樓、 15樓至23樓及25樓至28樓	3150	3150	3150	3150	3150	3150	3150	3150	3150
		29/F 29樓	3400	3400	3400	3400	3400	3400	3400	3400	3400
		30/F 30樓	3400, 3450, 3650, 3700	3400, 3450, 3650, 3750	3400, 3450, 3650, 3700, 3950	3400, 3650, 3700, 3900, 4000	3400, 3650, 3700, 3950, 4000	3400, 3450, 3650, 3750	3400, 3450, 3650, 3700, 3900, 4000	3400, 3450, 3650, 3700, 3900, 4000	3400, 3450, 3650, 3750, 3900, 3900

The internal areas of the residential properties on the upper floors will generally be slightly larger than those on the lower floors because of the reducing thickness of the structural walls on the upper floors. (Note: Not applicable to the Phase)

Notes:

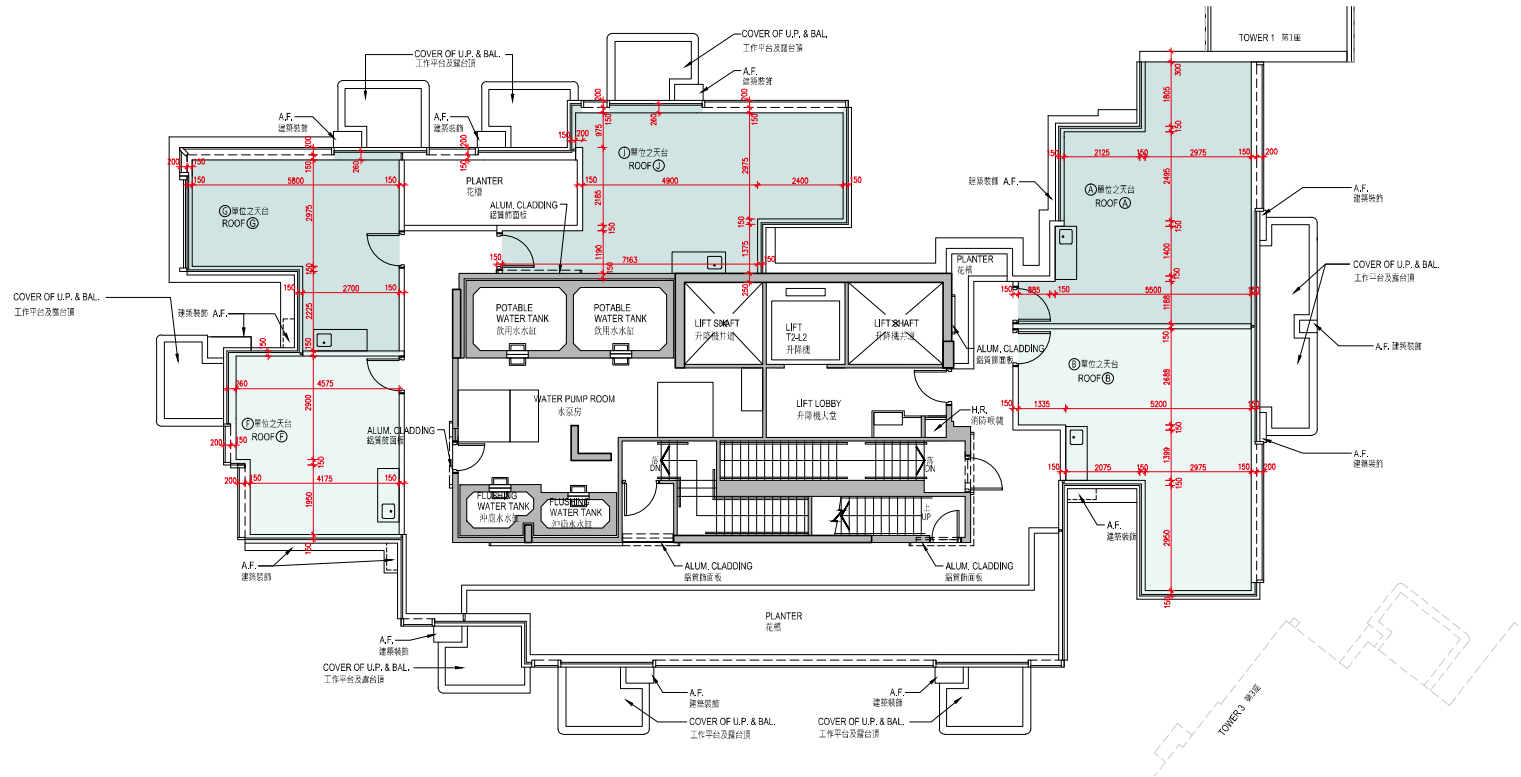
- The dimensions in the floor plans are all structural dimensions in millimetre.
- Please refer to the first page of the section "Floor Plans of Residential Properties in the Phase" for legend for the terms and abbreviations shown on the floor plan.

因住宅物業的較高樓層的結構牆的厚度遞減，較高樓層的內部面積，一般比較低樓層的內部面積稍大。（註：不適用於期數）

備註：

- 樓面平面圖之尺規所列數字為以毫米標示之建築結構尺寸。
- 樓面平面圖中顯示之名詞及簡稱之圖例請參閱「期數的住宅物業的樓面平面圖」一節的首頁。

Tower 2 Roof
第2座 天台



Scale: 0M/米 5M/米
比例:

	Tower 座數	Floor 樓層	Flat 單位				
			A	B	F	G	J
The thickness of the floor slabs (excluding plaster) of each residential property (mm) 每個住宅物業的樓板（不包括灰泥）的厚度（毫米）	Tower 2 第2座	Roof 天台	Not applicable 不適用				
The floor-to-floor height (refers to the height between the top surface of the structural slab of a floor and the top surface of the structural slab of its immediate upper floor) of each residential property (mm) 每個住宅物業的層與層之間的高度（指該樓層之石屎地台面與上一層石屎地台面之高度距離）（毫米）							

The internal areas of the residential properties on the upper floors will generally be slightly larger than those on the lower floors because of the reducing thickness of the structural walls on the upper floors. (Note: Not applicable to the Phase)

Notes:

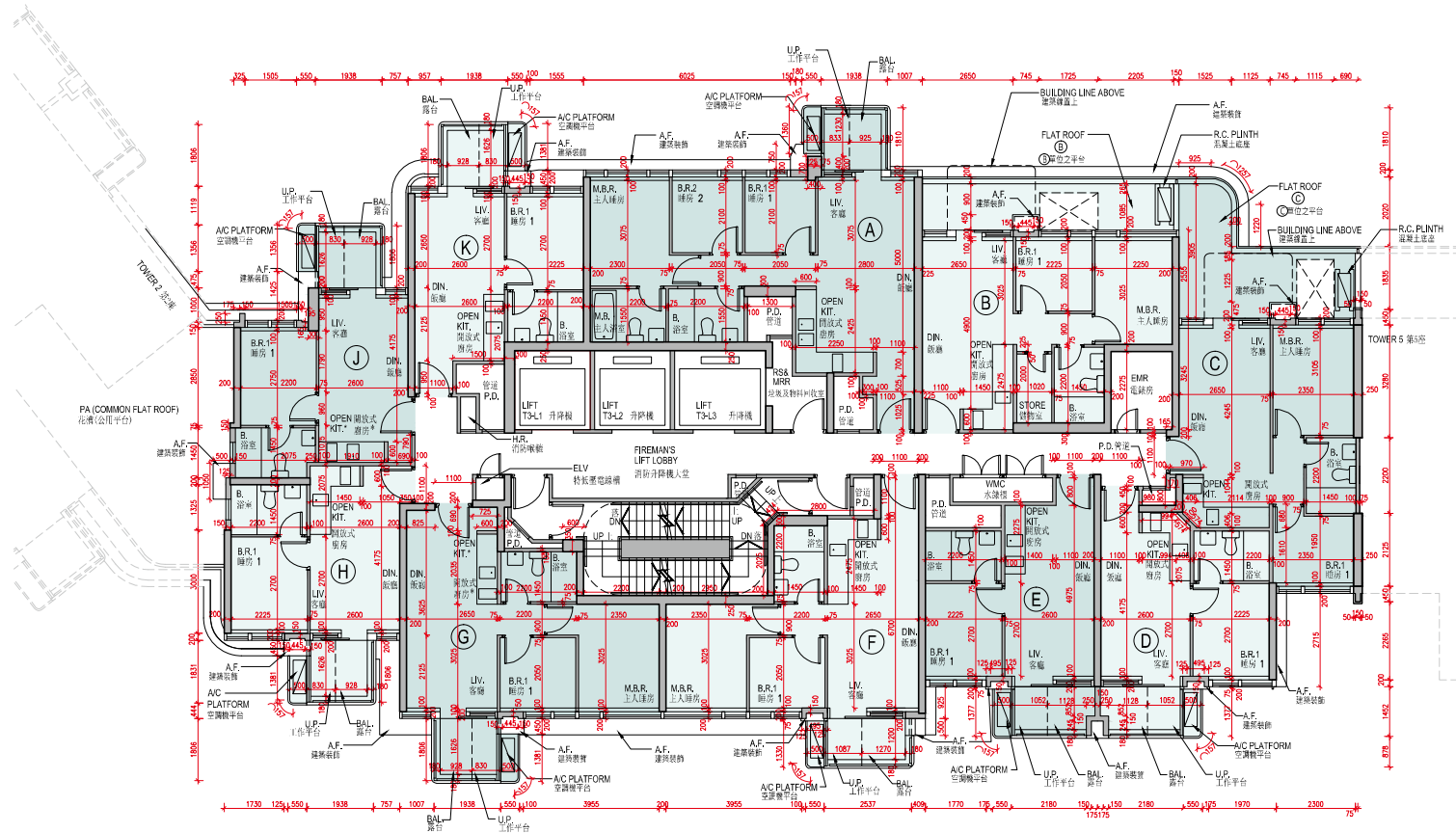
1. The dimensions in the floor plans are all structural dimensions in millimetre.
2. Please refer to the first page of the section "Floor Plans of Residential Properties in the Phase" for legend for the terms and abbreviations shown on the floor plan.

因住宅物業的較高樓層的結構牆的厚度遞減，較高樓層的內部面積，一般比較低樓層的內部面積稍大。（註：不適用於期數）

備註：

1. 樓面平面圖之尺規所列數字為以毫米標示之建築結構尺寸。
2. 樓面平面圖中顯示之名詞及簡稱之圖例請參閱「期數的住宅物業的樓面平面圖」一節的首頁。

Tower 3 2/F
第3座 2樓



Scale: 0M/米 5M/米
比例:

	Tower 座數	Floor 樓層	Flat 單位									
			A	B	C	D	E	F	G	H	J	K
The thickness of the floor slabs (excluding plaster) of each residential property (mm) 每個住宅物業的樓板（不包括灰泥）的厚度（毫米）	Tower 3 第3座	2/F 2樓	150	150	150	150	150	150	150	150	150	150
The floor-to-floor height (refers to the height between the top surface of the structural slab of a floor and the top surface of the structural slab of its immediate upper floor) of each residential property (mm) 每個住宅物業的層與層之間的高度（指該樓層之石屎地台面與上一層石屎地台面之高度距離）（毫米）			3350, 3450, 3650, 3700	3350, 3450, 3650, 3700	3300, 3400, 3450, 3650, 3700	3350, 3450, 3650, 3700	3350, 3450, 3650, 3700	3350, 3450, 3650, 3700	3350, 3450, 3650, 3700	3350, 3450, 3650, 3700	3350, 3400, 3450, 3650, 3700	3350, 3650, 3700

The internal areas of the residential properties on the upper floors will generally be slightly larger than those on the lower floors because of the reducing thickness of the structural walls on the upper floors. (Note: Not applicable to the Phase)

Notes:

1. The dimensions in the floor plans are all structural dimensions in millimetre.
2. Please refer to the first page of the section "Floor Plans of Residential Properties in the Phase" for legend for the terms and abbreviations shown on the floor plan.

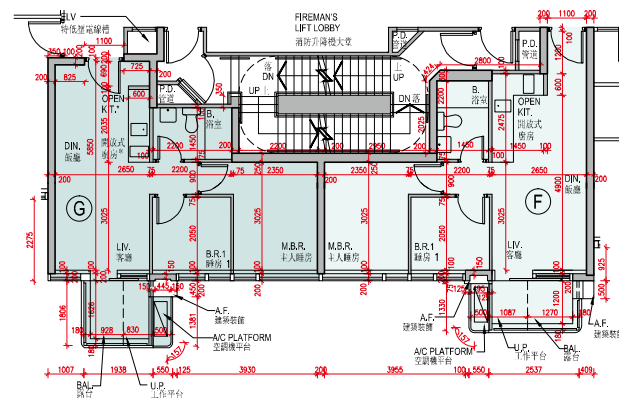
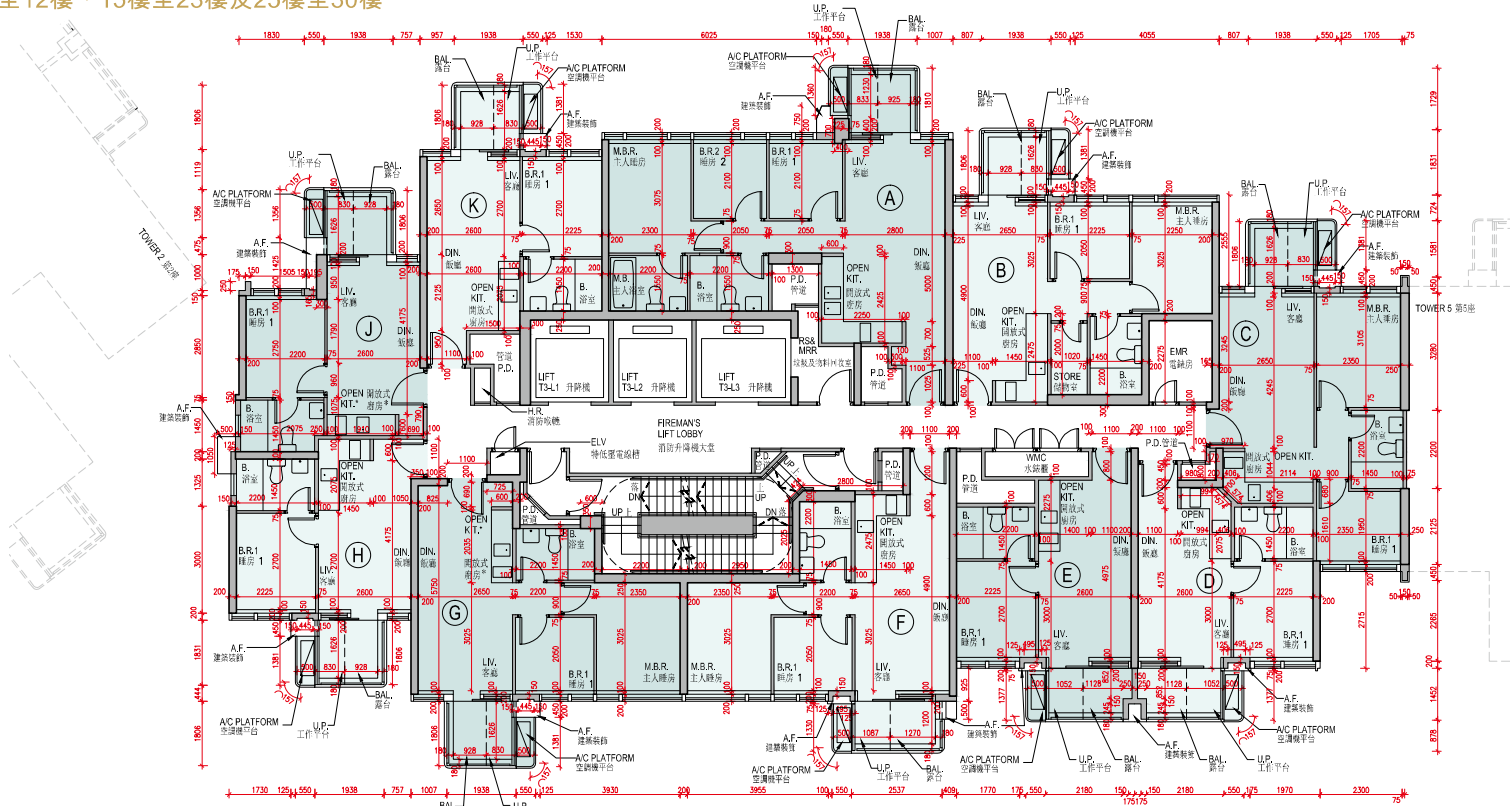
因住宅物業的較高樓層的結構牆的厚度遞減，較高樓層的內部面積，一般比較低樓層的內部面積稍大。（註：不適用於期數）

備註：

1. 樓面平面圖之尺規所列數字為以毫米標示之建築結構尺寸。
2. 樓面平面圖中顯示之名詞及簡稱之圖例請參閱「期數的住宅物業的樓面平面圖」一節的首頁。

Tower 3 3/F, 5/F-12/F, 15/F-23/F & 25/F-30/F

第3座 3樓、5樓至12樓、15樓至23樓及25樓至30樓



Tower 3 30/F Part Plan
第3座 30樓 局部平面圖

Scale: 0M/米 5M/米
比例:

	Tower 座數	Floor 樓層	Flat 單位										
			A	B	C	D	E	F	G	H	J	K	
The thickness of the floor slabs (excluding plaster) of each residential property (mm) 每個住宅物業的樓板（不包括灰泥）的厚度（毫米）		3/F, 5/F-12/F, 15/F-23/F & 25/F-29/F 3樓、5樓至12樓、 15樓至23樓及25樓至29樓	150	150	150	150	150	150	150	150	150	150	150
		30/F 30樓	200, 450	200	200	200	200	200, 450	200	200	200	200	200
The floor-to-floor height (refers to the height between the top surface of the structural slab of a floor and the top surface of the structural slab of its immediate upper floor) of each residential property (mm) 每個住宅物業的層與層之間的高度（指該樓層之石屎地台面與上一層石屎地台面之高度距離）（毫米）	Tower 3 第3座	3/F, 5/F-12/F, 15/F-23/F & 25/F-28/F 3樓、5樓至12樓、 15樓至23樓及25樓至28樓	3150	3150	3150	3150	3150	3150	3150	3150	3150	3150	3150
		29/F 29樓	3400	3400	3400	3400	3400	3400	3400	3400	3400	3400	3400
		30/F 30樓	3400, 3450, 3650, 3750	3400, 3450, 3650, 3750	3400, 3450, 3650, 3700, 3800	3400, 3450, 3650, 3750	3400, 3450, 3650, 3750	3400, 3450, 3650, 3750	3400, 3450, 3650, 3700, 3750, 3900, 4000	3400, 3650, 3700, 3650, 3750	3400, 3450, 3650, 3700, 3750	3400, 3450, 3650, 3700, 3750	3400, 3450, 3650, 3750

The internal areas of the residential properties on the upper floors will generally be slightly larger than those on the lower floors because of the reducing thickness of the structural walls on the upper floors. (Note: Not applicable to the Phase)

Notes:

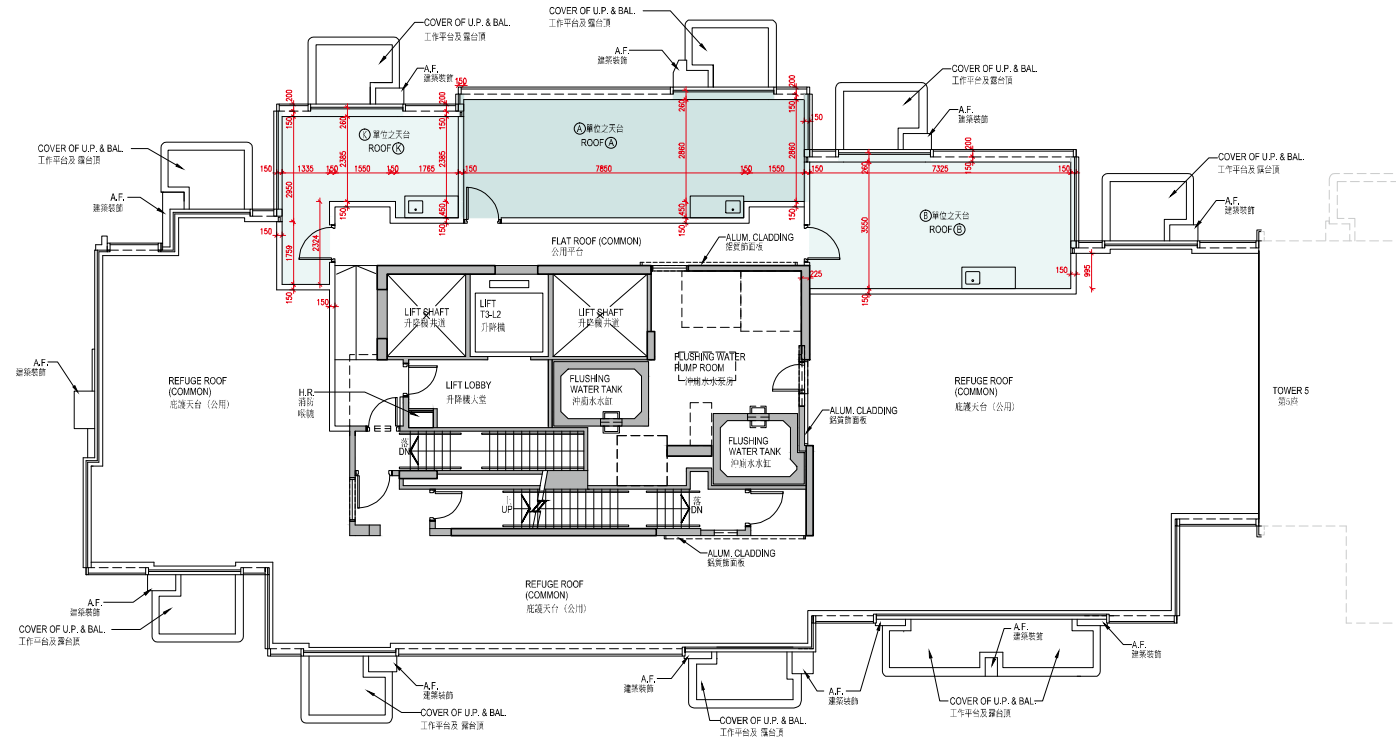
- The dimensions in the floor plans are all structural dimensions in millimetre.
- Please refer to the first page of the section "Floor Plans of Residential Properties in the Phase" for legend for the terms and abbreviations shown on the floor plan.

因住宅物業的較高樓層的結構牆的厚度遞減，較高樓層的內部面積，一般比較低樓層的內部面積稍大。（註：不適用於期數）

備註：

- 樓面平面圖之尺規所列數字為以毫米標示之建築結構尺寸。
- 樓面平面圖中顯示之名詞及簡稱之圖例請參閱「期數的住宅物業的樓面平面圖」一節的首頁。

Tower 3 Roof
第3座 天台



Scale: 0M/米 5M/米
比例：

	Tower 座數	Floor 樓層	Flat 單位		
			A	B	K
The thickness of the floor slabs (excluding plaster) of each residential property (mm) 每個住宅物業的樓板（不包括灰泥）的厚度（毫米）	Tower 3 第3座	Roof 天台	Not applicable 不適用		
The floor-to-floor height (refers to the height between the top surface of the structural slab of a floor and the top surface of the structural slab of its immediate upper floor) of each residential property (mm) 每個住宅物業的層與層之間的高度（指該樓層之石屎地台面與上一層石屎地台面之高度距離）（毫米）					

The internal areas of the residential properties on the upper floors will generally be slightly larger than those on the lower floors because of the reducing thickness of the structural walls on the upper floors. (Note: Not applicable to the Phase)

Notes:

1. The dimensions in the floor plans are all structural dimensions in millimetre.
2. Please refer to the first page of the section "Floor Plans of Residential Properties in the Phase" for legend for the terms and abbreviations shown on the floor plan.

因住宅物業的較高樓層的結構牆的厚度遞減，較高樓層的內部面積，一般比較低樓層的內部面積稍大。（註：不適用於期數）

備註：

1. 樓面平面圖之尺規所列數字為以毫米標示之建築結構尺寸。
2. 樓面平面圖中顯示之名詞及簡稱之圖例請參閱「期數的住宅物業的樓面平面圖」一節的首頁。