

10 期數的住宅物業的樓面平面圖

FLOOR PLANS OF RESIDENTIAL PROPERTIES IN THE PHASE

在本頁上之備註和圖例適用於全部的「期數的住宅物業的樓面平面圖」頁數。
The notes and legends on this page apply to all pages of "Floor plans of residential properties in the Phase".

樓面平面圖圖例 Legends of the Floor Plans

A.F.	= 建築裝飾 Architectural Feature
A/C PLATFORM	= 冷氣機平台 Air-conditioner Platform
A/C PLINTH	= 冷氣機底座 Air-conditioner Plinth
B	= 浴室 Bathroom
BAL	= 露台 Balcony
BBQ	= 燒烤爐 Barbecue Grill
BR	= 睡房 Bedroom
BR1	= 睡房1 Bedroom 1
BR2	= 睡房2 Bedroom 2
DN	= 落 Down
E.M.C.	= 電錶櫃 Electric Meter Cabinet
E.M.R.	= 電錶房 Electric Meter Room
ELE	= 電線槽 Electrical Duct
ELE ROOM	= 電線房 Electric Room
ELV	= 特低壓電線 Extra Low Voltage
ELV ROOM	= 特低壓電線房 Extra Low Voltage Room
ELV. DUCT	= 特低壓電線管道 Extra Low Voltage Duct
FIRE CONTROL ROOM	= 消防控制室 Fire Control Room
F.S. INLET AND SPRINKLER CONTROL VALVE	= B座消防入水掣及花灑控制閥 Fire Services Inlet and Sprinkler Control Valve For Tower B
FORTOWER B	
FLUSHING WATER TANK	= 沖廁水缸 Flushing Water Tank
GAS CONTROL COMPARTMENT	= 氣體控制組件 Gas Control Compartment
H.R.	= 消防喉轆 Hose Reel
H.R. AT H/L	= 位於高位的消防喉轆 Hose Reel at High Level
H.R. AT L/L	= 位於低位的消防喉轆 Hose Reel at Low Level
LIV / DIN	= 客廳 Living Room / 飯廳 Dining Room
MAUP	= 地下渠的維修範圍 Maintenance Areas of Underground Pipes
MB	= 主人浴室 Master Bathroom
MBR	= 主人睡房 Master Bedroom
PD.	= 管道槽 Pipe Duct
PIPE WELL	= 管道井 Pipe Well

POTABLE & FLUSHING WATER PUMP ROOM	= 食水及沖廁水泵房 Potable and Flushing Water Pump Room
RS&MRR	= 垃圾及物料回收室 Refuse Storage and Material Recovery Room
SPRINKLER INLET & F.S. INLET	= 花灑入水掣及消防入水掣 Sprinkler Inlet and Fire Services Inlet
ST	= 儲物室 Store Room
T	= 洗手間 Toilet
T.R.S.	= 臨時庇護處 Temporary Refuge Spaces
TBE ROOM	= 電訊及廣播設備室 Telecommunications and Broadcasting Equipment Room
TOP OF MACHINE ROOM-LESS LIFT	= 無機房升降機上方 Top of Machine Room-less Lift
U.P.	= 工作平台 Utility Platform
UT	= 工作間 Utility Room
UP	= 上 Up
VENT DUCT	= 通風槽 Ventilation Duct
W.M.R.	= 水錶房 Water Meter Room

備註：

1. 部分住宅物業的露台、工作平台、私人花園、平台、天台或外牆或設有外露之公用喉管，或外牆裝飾板內藏之公用喉管。
2. 部分住宅物業內之部分天花或有跌級樓板，用以安裝上層之機電設備或配合上層之結構、建築設計及/或裝修設計上的需要。
3. 部分住宅物業內或設有假陣或假天花用以安裝冷氣喉管及/或其他機電設備。
4. 樓面平面圖所列之數字為以毫米標示之建築結構尺寸。
5. 各住宅物業的樓面平面圖內所展示之裝置及設備的圖標如浴缸、洗面盆、座廁、淋浴間、洗滌盆、櫃(如有)等乃根據最新經批准的建築圖則擬備，其形狀、尺寸、比例或與實際提供的裝置及設備存在差異，僅供示意及參考之用。

Notes:

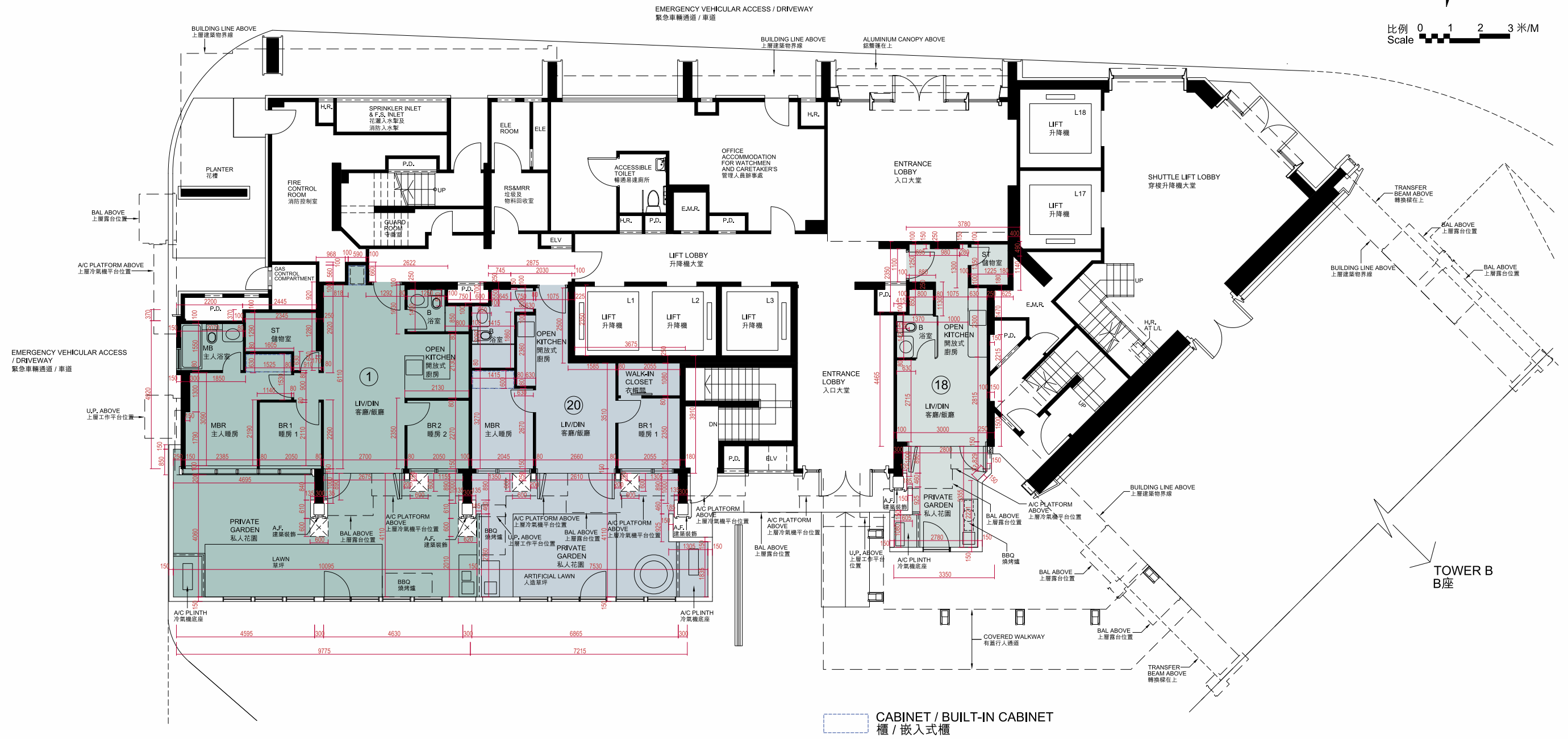
1. Common pipes exposed or enclosed in cladding may be located at the balcony, utility platform, private garden, flat roof, roof or external wall of some residential properties.
2. There may be sunken slabs at some parts of the ceiling inside some residential properties for the installation of mechanical and electrical services of the floor above or due to the structural, architectural and/or decoration design requirements of the floor above.
3. There may be ceiling bulkheads or false ceiling inside some residential properties for the installation of air-conditioning conduits and/or other mechanical and electrical services.
4. The dimensions of the floor plans are all structural dimensions in millimeter.
5. Those icons of fittings and appliances shown on the floor plans of residential properties like bathtubs, wash basins, water closets, shower cubicles, sink units, cabinets (if any) etc. are prepared in accordance with the latest approved building plans. Their shapes, dimensions, scales may be differed from the fittings and appliances actually provided and they are for indication and reference only.

10 期數的住宅物業的樓面平面圖

FLOOR PLANS OF RESIDENTIAL PROPERTIES IN THE PHASE



比例 0 1 2 3 米/M
Scale



A座 Tower A
地下平面圖 G/F FLOOR PLAN

10 期數的住宅物業的樓面平面圖

FLOOR PLANS OF RESIDENTIAL PROPERTIES IN THE PHASE

A座 Tower A				
每個住宅物業 Each Residential Property	樓層 Floor	單位 Flat		
		1	18	20
層與層之間的高度 (毫米) Floor-to-Floor Height (mm)	地下 G/F	2800, 2850, 3150	2850, 3150	2800, 2850, 3150
樓板 (不包括灰泥) 的厚度 (毫米) Thickness of Floor Slab (excluding plaster) (mm)		115, 175	115, 160	115, 160

私人花園空白位置為供維修大廈設備使用的公用地方。

Blank areas on the private garden are common areas for building facility maintenance.

因住宅物業的較高樓層的結構牆的厚度遞減，較高樓層的內部面積，一般比較低樓層的內部面積稍大。

The internal areas of the residential properties on the upper floors will generally be slightly larger than those on the lower floors because of the reducing thickness of the structural walls on the upper floors.

請參閱本售樓說明書第25頁為住宅物業樓面平面圖而設之備註和圖例。

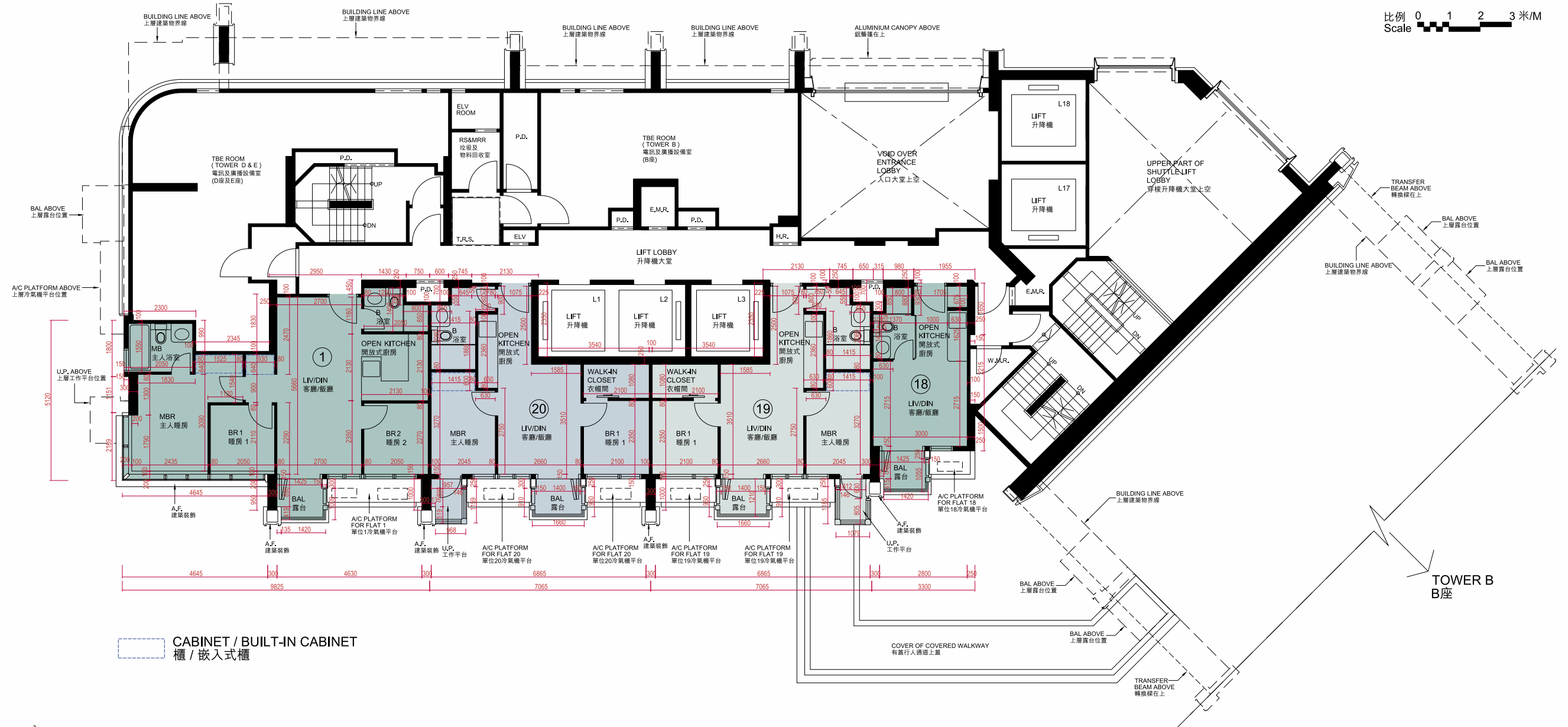
Please refer to page 25 of this sales brochure for the notes and legends for the floor plans of residential properties.

10 期數的住宅物業的樓面平面圖

FLOOR PLANS OF RESIDENTIAL PROPERTIES IN THE PHASE



比例 0 1 2 3 米/M
Scale



CABINET / BUILT-IN CABINET
櫃 / 嵌入式櫃

A座 Tower A

1樓平面圖 1/F FLOOR PLAN

10 期數的住宅物業的樓面平面圖

FLOOR PLANS OF RESIDENTIAL PROPERTIES IN THE PHASE

A座 Tower A					
每個住宅物業 Each Residential Property	樓層 Floor	單位 Flat			
		1	18	19	20
層與層之間的高度 (毫米) Floor-to-Floor Height (mm)	1樓 1/F	2800, 2850, 3150	2850, 3150	2800, 2850, 3150	2800, 2850, 3150
樓板 (不包括灰泥) 的厚度 (毫米) Thickness of Floor Slab (excluding plaster) (mm)		115, 160, 175	115, 160	115, 160	115, 160

私人花園空白位置為供維修大廈設備使用的公用地方。

Blank areas on the private garden are common areas for building facility maintenance.

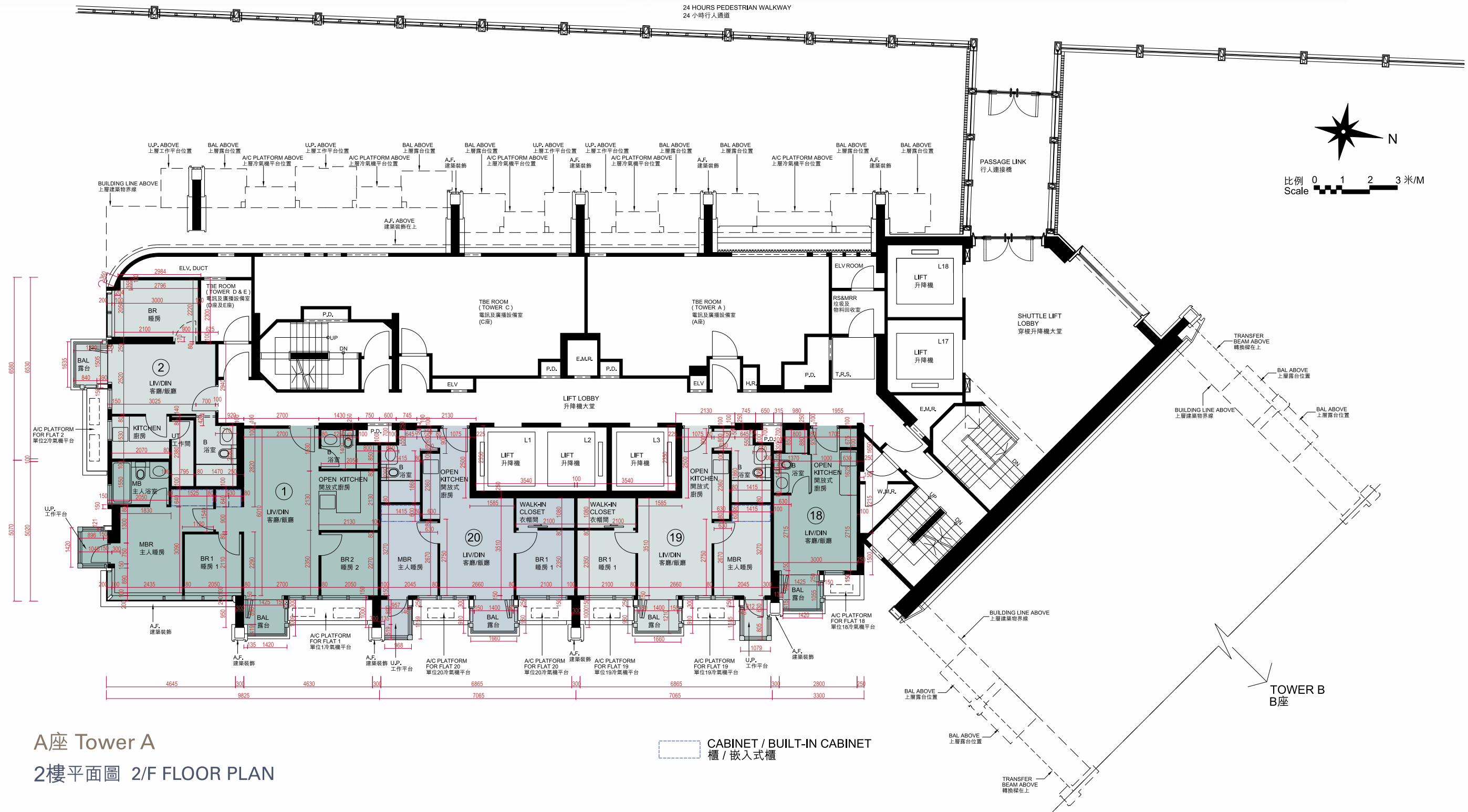
因住宅物業的較高樓層的結構牆的厚度遞減，較高樓層的內部面積，一般比較低樓層的內部面積稍大。

The internal areas of the residential properties on the upper floors will generally be slightly larger than those on the lower floors because of the reducing thickness of the structural walls on the upper floors.

請參閱本售樓說明書第25頁為住宅物業樓面平面圖而設之備註和圖例。

Please refer to page 25 of this sales brochure for the notes and legends for the floor plans of residential properties.

10 期數的住宅物業的樓面平面圖 FLOOR PLANS OF RESIDENTIAL PROPERTIES IN THE PHASE



A座 Tower A
2樓平面圖 2/F FLOOR PLAN

10 期數的住宅物業的樓面平面圖

FLOOR PLANS OF RESIDENTIAL PROPERTIES IN THE PHASE

A座 Tower A						
每個住宅物業 Each Residential Property	樓層 Floor	單位 Flat				
		1	2	18	19	20
層與層之間的高度 (毫米) Floor-to-Floor Height (mm)	2樓 2/F	2800, 2850, 3150	2800, 2850, 3150	2800, 2850, 3150	2800, 2850, 3150	2800, 2850, 3150
樓板 (不包括灰泥) 的厚度 (毫米) Thickness of Floor Slab (excluding plaster) (mm)		115, 160, 175	115, 160, 175	115, 160	115, 160	115, 160

因住宅物業的較高樓層的結構牆的厚度遞減，較高樓層的內部面積，一般比較低樓層的內部面積稍大。

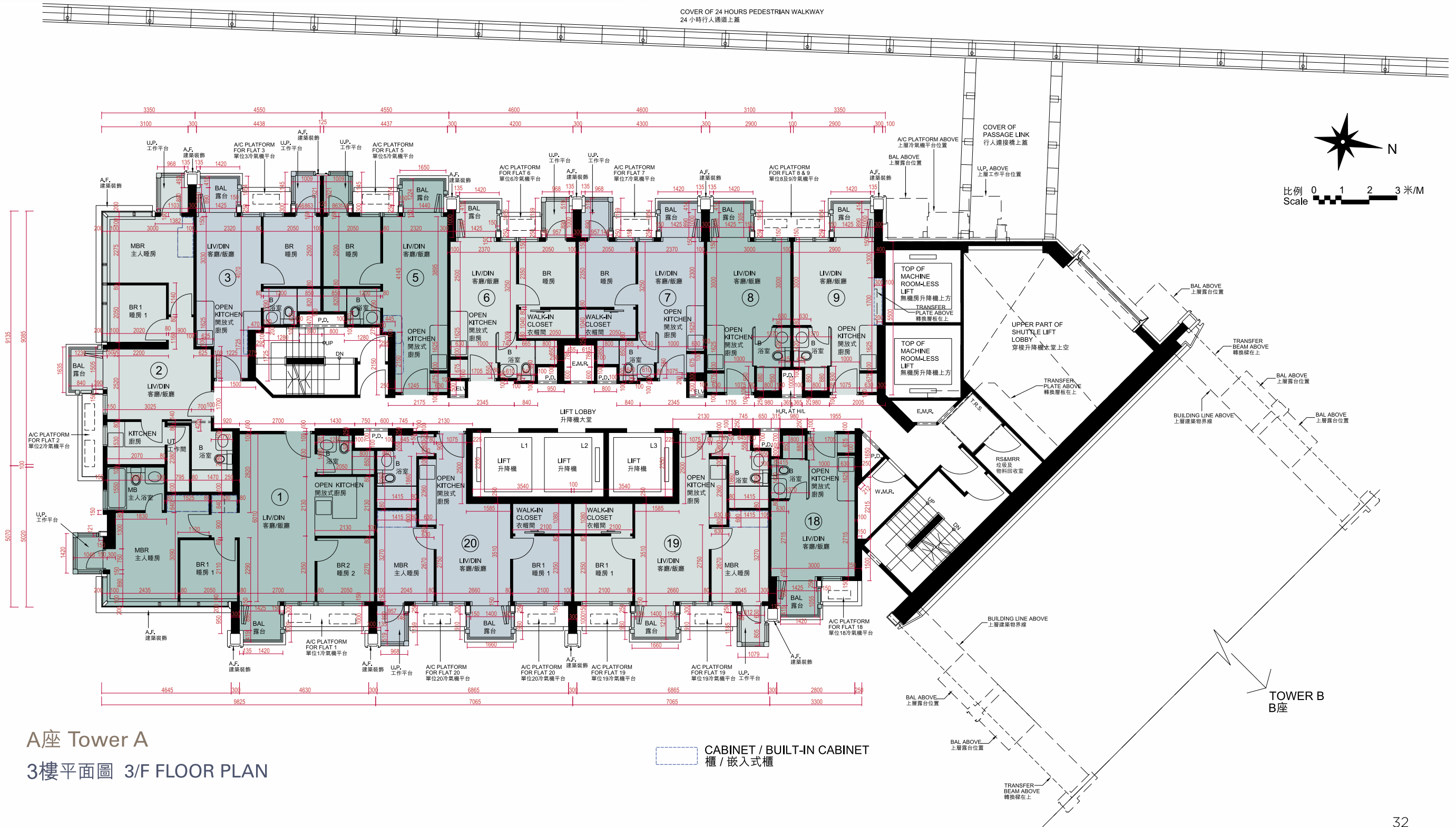
The internal areas of the residential properties on the upper floors will generally be slightly larger than those on the lower floors because of the reducing thickness of the structural walls on the upper floors.

請參閱本售樓說明書第25頁為住宅物業樓面平面圖而設之備註和圖例。

Please refer to page 25 of this sales brochure for the notes and legends for the floor plans of residential properties.

10 期數的住宅物業的樓面平面圖

FLOOR PLANS OF RESIDENTIAL PROPERTIES IN THE PHASE



A座 Tower A
3樓平面圖 3/F FLOOR PLAN

10 期數的住宅物業的樓面平面圖

FLOOR PLANS OF RESIDENTIAL PROPERTIES IN THE PHASE

A座 Tower A												
每個住宅物業 Each Residential Property	樓層 Floor	單位 Flat										
		1	2	3	5	6	7	8	9	18	19	20
層與層之間的高度 (毫米) Floor-to-Floor Height (mm)	3樓 3/F	2800, 2850, 3150	2800, 2850, 3150	2800, 2850, 3150	2800, 2850, 3150	2800, 2850, 3150	2800, 2850, 3150	2800, 2850, 3150	2800, 2850, 3150	2800, 2850, 3150	2800, 2850, 3150	2800, 2850, 3150
樓板 (不包括灰泥) 的厚度 (毫米) Thickness of Floor Slab (excluding plaster) (mm)		115, 160, 175	115, 160, 175	115, 160, 175	115, 160	115, 160	115, 160	115, 160	115, 160	115, 160, 1350	115, 160	115, 160

因住宅物業的較高樓層的結構牆的厚度遞減，較高樓層的內部面積，一般比較低樓層的內部面積稍大。

The internal areas of the residential properties on the upper floors will generally be slightly larger than those on the lower floors because of the reducing thickness of the structural walls on the upper floors.

請參閱本售樓說明書第25頁為住宅物業樓面平面圖而設之備註和圖例。

Please refer to page 25 of this sales brochure for the notes and legends for the floor plans of residential properties.

10 期數的住宅物業的樓面平面圖

FLOOR PLANS OF RESIDENTIAL PROPERTIES IN THE PHASE



A座 Tower A
5樓平面圖 5/F FLOOR PLAN

10 期數的住宅物業的樓面平面圖

FLOOR PLANS OF RESIDENTIAL PROPERTIES IN THE PHASE

A座 Tower A								
每個住宅物業 Each Residential Property	樓層 Floor	單位 Flat						
		1	2	3	5	6	7	8
層與層之間的高度 (毫米) Floor-to-Floor Height (mm)	5樓 5/F	2800, 2850, 3150	2800, 2850, 3150	2800, 2850, 3150	2800, 2850, 3150	2800, 2850, 3150	2800, 2850, 3150	2800, 2850, 3150
樓板 (不包括灰泥) 的厚度 (毫米) Thickness of Floor Slab (excluding plaster) (mm)		115, 160, 175	115, 160, 175	115, 160, 175	115, 160	115, 160	115, 160	115, 160
每個住宅物業 Each Residential Property	樓層 Floor	單位 Flat						
		9	10	11	18	19	20	
層與層之間的高度 (毫米) Floor-to-Floor Height (mm)	5樓 5/F	2800, 2850, 3150	2800, 2850, 3150	2800, 2850, 3150	2800, 2850, 3150	2800, 2850, 3150	2800, 2850, 3150	2800, 2850, 3150
樓板 (不包括灰泥) 的厚度 (毫米) Thickness of Floor Slab (excluding plaster) (mm)		115, 160	115, 160	115, 160	115, 160	115, 160	115, 160	115, 160

因住宅物業的較高樓層的結構牆的厚度遞減，較高樓層的內部面積，一般比較低樓層的內部面積稍大。

The internal areas of the residential properties on the upper floors will generally be slightly larger than those on the lower floors because of the reducing thickness of the structural walls on the upper floors.

請參閱本售樓說明書第25頁為住宅物業樓面平面圖而設之備註和圖例。

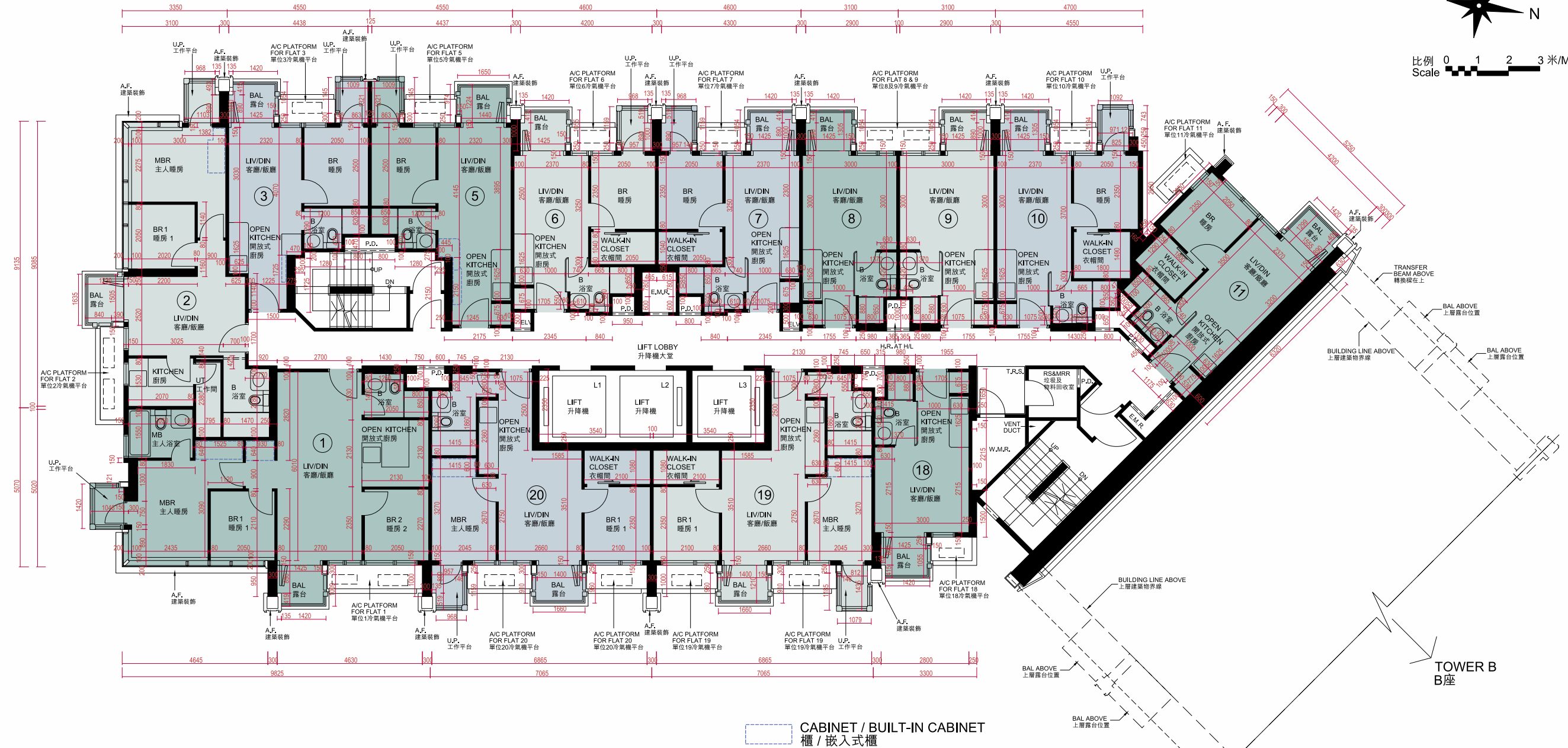
Please refer to page 25 of this sales brochure for the notes and legends for the floor plans of residential properties.

10 期數的住宅物業的樓面平面圖

FLOOR PLANS OF RESIDENTIAL PROPERTIES IN THE PHASE



比例 0 1 2 3 米/M
Scale



A座 Tower A
6樓-7樓平面圖 6/F-7/F FLOOR PLAN

10 期數的住宅物業的樓面平面圖

FLOOR PLANS OF RESIDENTIAL PROPERTIES IN THE PHASE

A座 Tower A								
每個住宅物業 Each Residential Property	樓層 Floor	單位 Flat						
		1	2	3	5	6	7	8
層與層之間的高度 (毫米) Floor-to-Floor Height (mm)	6樓-7樓 6/F-7/F	2800, 2850, 3150	2800, 2850, 3150	2800, 2850, 3150	2800, 2850, 3150	2800, 2850, 3150	2800, 2850, 3150	2800, 2850, 3150
樓板 (不包括灰泥) 的厚度 (毫米) Thickness of Floor Slab (excluding plaster) (mm)		115, 160, 175	115, 160, 175	115, 160, 175	115, 160	115, 160	115, 160	115, 160
每個住宅物業 Each Residential Property	樓層 Floor	單位 Flat						
		9	10	11	18	19	20	
層與層之間的高度 (毫米) Floor-to-Floor Height (mm)	6樓-7樓 6/F-7/F	2800, 2850, 3150	2800, 2850, 3150	2800, 2850, 3150	2800, 2850, 3150	2800, 2850, 3150	2800, 2850, 3150	2800, 2850, 3150
樓板 (不包括灰泥) 的厚度 (毫米) Thickness of Floor Slab (excluding plaster) (mm)		115, 160	115, 160	115, 160	115, 160	115, 160	115, 160	115, 160

因住宅物業的較高樓層的結構牆的厚度遞減，較高樓層的內部面積，一般比較低樓層的內部面積稍大。

The internal areas of the residential properties on the upper floors will generally be slightly larger than those on the lower floors because of the reducing thickness of the structural walls on the upper floors.

請參閱本售樓說明書第25頁為住宅物業樓面平面圖而設之備註和圖例。

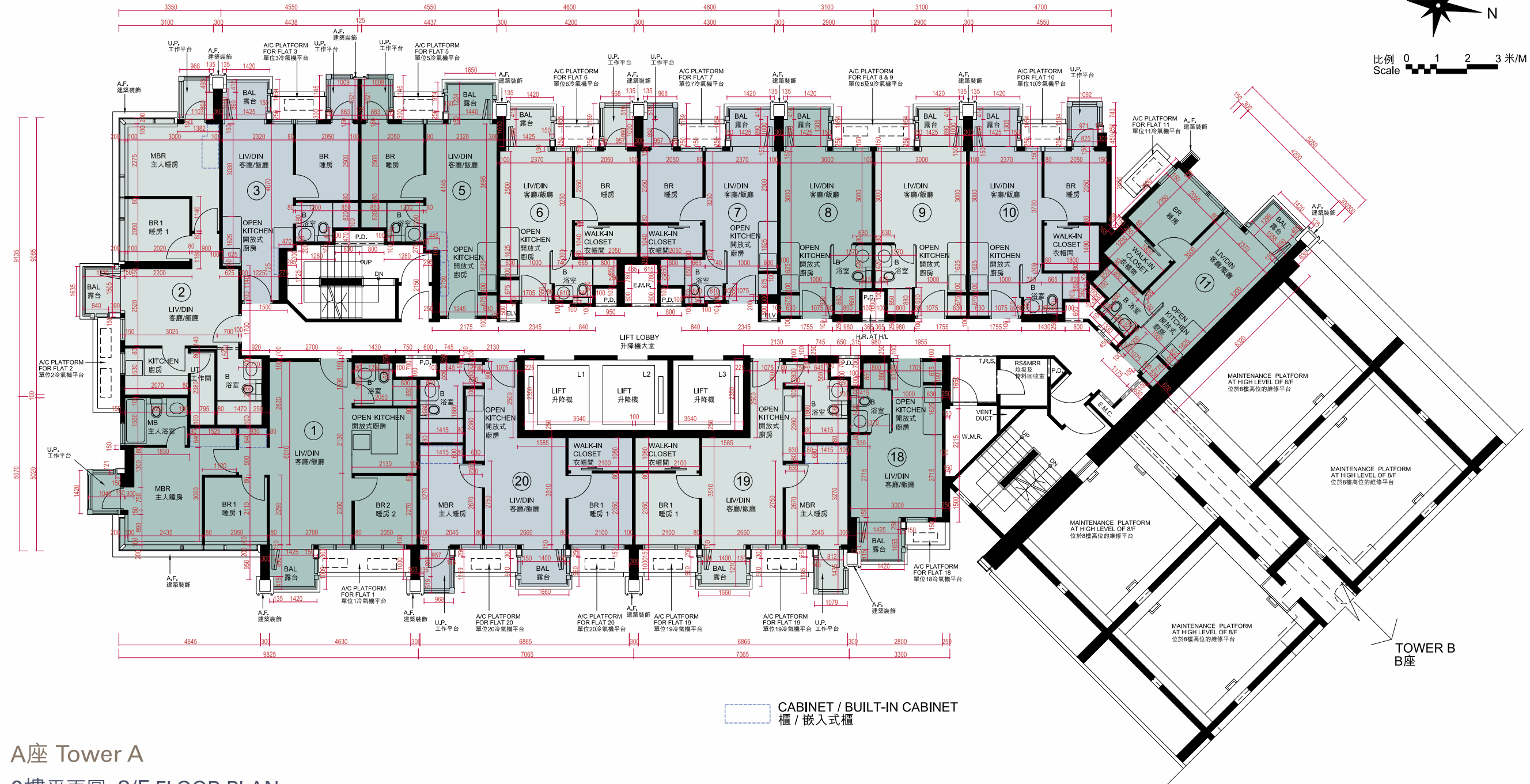
Please refer to page 25 of this sales brochure for the notes and legends for the floor plans of residential properties.

10 期數的住宅物業的樓面平面圖

FLOOR PLANS OF RESIDENTIAL PROPERTIES IN THE PHASE



比例 0 1 2 3 米/M
Scale



A座 Tower A
8樓平面圖 8/F FLOOR PLAN

10 期數的住宅物業的樓面平面圖

FLOOR PLANS OF RESIDENTIAL PROPERTIES IN THE PHASE

A座 Tower A								
每個住宅物業 Each Residential Property	樓層 Floor	單位 Flat						
		1	2	3	5	6	7	8
層與層之間的高度 (毫米) Floor-to-Floor Height (mm)	8樓 8/F	2800, 2850, 3150	2800, 2850, 3150	2800, 2850, 3150	2800, 2850, 3150	2800, 2850, 3150	2800, 2850, 3150	2800, 2850, 3150
樓板 (不包括灰泥) 的厚度 (毫米) Thickness of Floor Slab (excluding plaster) (mm)		115, 160, 175	115, 160, 175	115, 160, 175	115, 160	115, 160	115, 160	115, 160
每個住宅物業 Each Residential Property	樓層 Floor	單位 Flat						
		9	10	11	18	19	20	
層與層之間的高度 (毫米) Floor-to-Floor Height (mm)	8樓 8/F	2800, 2850, 3150	2800, 2850, 3150	2800, 2850, 3150	2800, 2850, 3150	2800, 2850, 3150	2800, 2850, 3150	
樓板 (不包括灰泥) 的厚度 (毫米) Thickness of Floor Slab (excluding plaster) (mm)		115, 160	115, 160	115, 160	115, 160	115, 160	115, 160	

因住宅物業的較高樓層的結構牆的厚度遞減，較高樓層的內部面積，一般比較低樓層的內部面積稍大。

The internal areas of the residential properties on the upper floors will generally be slightly larger than those on the lower floors because of the reducing thickness of the structural walls on the upper floors.

請參閱本售樓說明書第25頁為住宅物業樓面平面圖而設之備註和圖例。

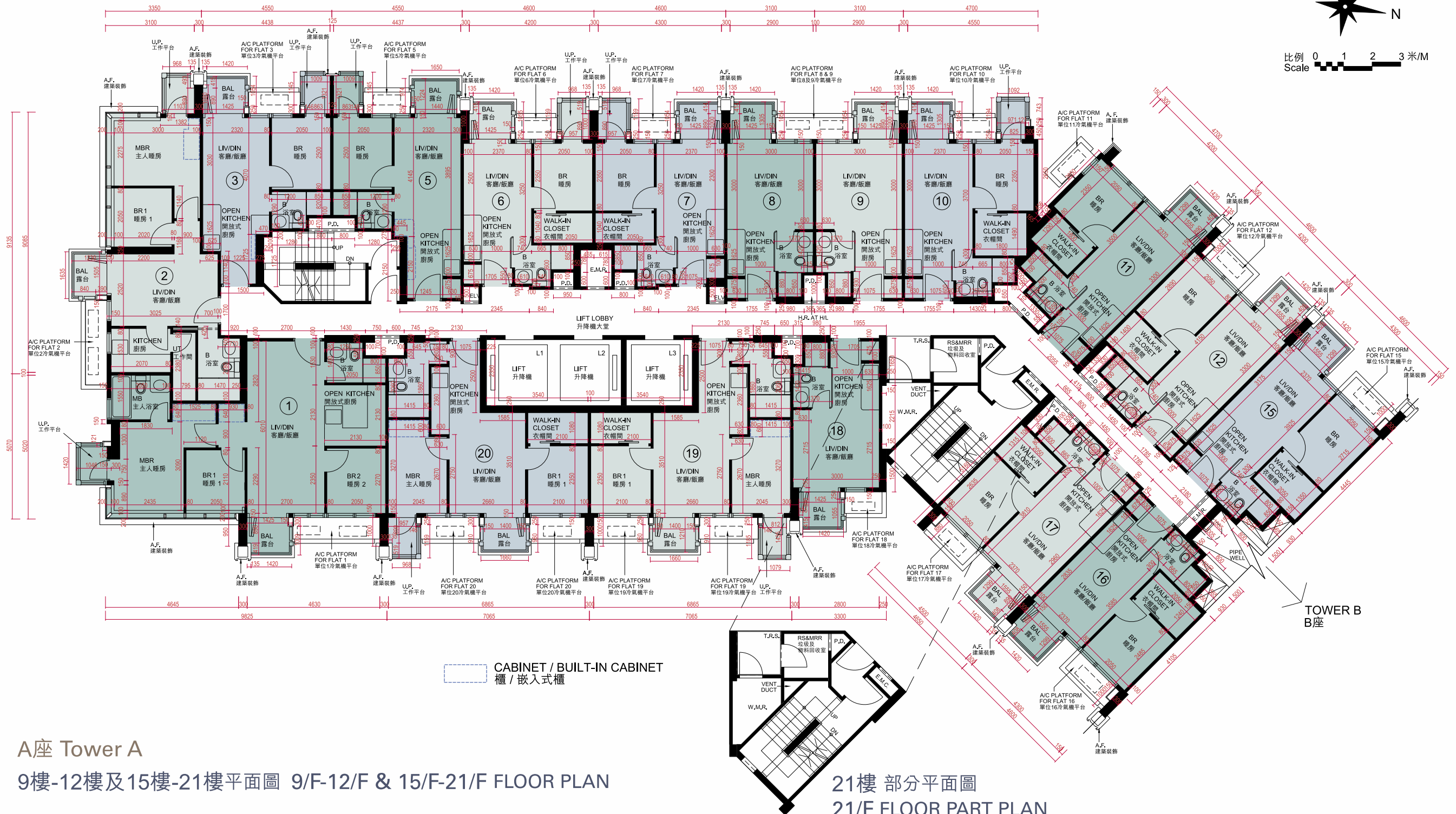
Please refer to page 25 of this sales brochure for the notes and legends for the floor plans of residential properties.

10 期數的住宅物業的樓面平面圖

FLOOR PLANS OF RESIDENTIAL PROPERTIES IN THE PHASE



比例 0 1 2 3米/M
Scale



A座 Tower A

9樓-12樓及15樓-21樓平面圖 9/F-12/F & 15/F-21/F FLOOR PLAN

21樓 部分平面圖
21/F FLOOR PART PLAN

10 期數的住宅物業的樓面平面圖

FLOOR PLANS OF RESIDENTIAL PROPERTIES IN THE PHASE

A座 Tower A

每個住宅物業 Each Residential Property	樓層 Floor	單位 Flat									
		1	2	3	5	6	7	8	9	10	
層與層之間的高度 (毫米) Floor-to-Floor Height (mm)	9樓-12樓及 15樓-20樓 9/F-12/F & 15/F-20/F	2800, 2850, 3150	2800, 2850, 3150	2800, 2850, 3150	2800, 2850, 3150	2800, 2850, 3150	2800, 2850, 3150	2800, 2850, 3150	2800, 2850, 3150	2800, 2850, 3150	
樓板 (不包括灰泥) 的厚度 (毫米) Thickness of Floor Slab (excluding plaster) (mm)		115, 160, 175	115, 160, 175	115, 160, 175	115, 160	115, 160	115, 160	115, 160	115, 160	115, 160	
每個住宅物業 Each Residential Property	樓層 Floor	單位 Flat									
		11	12	15	16	17	18	19	20		
層與層之間的高度 (毫米) Floor-to-Floor Height (mm)	9樓-12樓及 15樓-20樓 9/F-12/F & 15/F-20/F	2800, 2850, 3150	2800, 2850, 3150	2800, 2850, 3150	2800, 2850, 3150	2800, 2850, 3150	2800, 2850, 3150	2800, 2850, 3150	2800, 2850, 3150		
樓板 (不包括灰泥) 的厚度 (毫米) Thickness of Floor Slab (excluding plaster) (mm)		115, 160	115, 160	115, 160	115, 160	115, 160	115, 160	115, 160	115, 160		

因住宅物業的較高樓層的結構牆的厚度遞減，較高樓層的內部面積，一般比較低樓層的內部面積稍大。

The internal areas of the residential properties on the upper floors will generally be slightly larger than those on the lower floors because of the reducing thickness of the structural walls on the upper floors.

請參閱本售樓說明書第25頁為住宅物業樓面平面圖而設之備註和圖例。

Please refer to page 25 of this sales brochure for the notes and legends for the floor plans of residential properties.

備註：不設4樓、13樓及14樓。

Note: 4/F, 13/F and 14/F are omitted.

10 期數的住宅物業的樓面平面圖

FLOOR PLANS OF RESIDENTIAL PROPERTIES IN THE PHASE

A座 Tower A										
每個住宅物業 Each Residential Property	樓層 Floor	單位 Flat								
		1	2	3	5	6	7	8	9	10
層與層之間的高度 (毫米) Floor-to-Floor Height (mm)	21樓 21/F	2950, 3000, 3300	3000, 3300	2950, 3300	2950, 3300	2950, 3300	2950, 3300	2950, 3300	2950, 3300	2950, 3300
樓板 (不包括灰泥) 的厚度 (毫米) Thickness of Floor Slab (excluding plaster) (mm)		115, 200	115, 160, 200	115, 200	115, 160, 200	115, 160	115, 160	115, 160	115, 160	115, 200
每個住宅物業 Each Residential Property	樓層 Floor	單位 Flat								
		11	12	15	16	17	18	19	20	
層與層之間的高度 (毫米) Floor-to-Floor Height (mm)	21樓 21/F	2950, 3300	2950, 3300	2950, 3300	3300	2950, 3300	2950, 3300	3300	3300	
樓板 (不包括灰泥) 的厚度 (毫米) Thickness of Floor Slab (excluding plaster) (mm)		115, 200	115, 160	115, 160	115, 160, 200	115, 160	115, 200	115, 160	115, 160	

因住宅物業的較高樓層的結構牆的厚度遞減，較高樓層的內部面積，一般比較低樓層的內部面積稍大。

The internal areas of the residential properties on the upper floors will generally be slightly larger than those on the lower floors because of the reducing thickness of the structural walls on the upper floors.

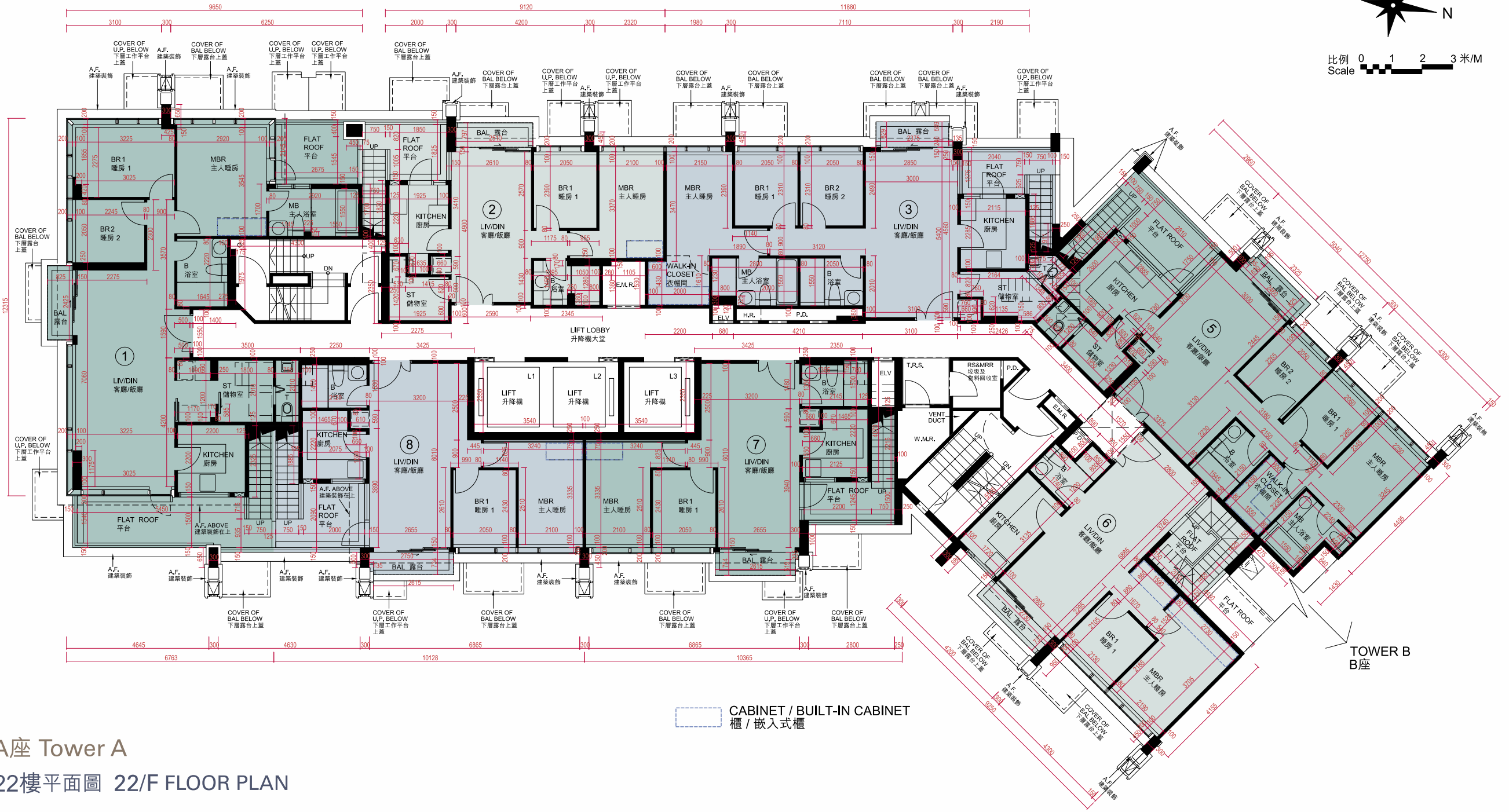
請參閱本售樓說明書第25頁為住宅物業樓面平面圖而設之備註和圖例。

Please refer to page 25 of this sales brochure for the notes and legends for the floor plans of residential properties.

10 期數的住宅物業的樓面平面圖 FLOOR PLANS OF RESIDENTIAL PROPERTIES IN THE PHASE



比例 0 1 2 3 米/M
Scale



A座 Tower A
22樓平面圖 22/F FLOOR PLAN

10 期數的住宅物業的樓面平面圖

FLOOR PLANS OF RESIDENTIAL PROPERTIES IN THE PHASE

A座 Tower A								
每個住宅物業 Each Residential Property	樓層 Floor	單位 Flat						
		1	2	3	5	6	7	8
層與層之間的高度 (毫米) Floor-to-Floor Height (mm)	22樓 22/F	3400	3400	3400	3400	3400	3400	3400
樓板 (不包括灰泥) 的厚度 (毫米) Thickness of Floor Slab (excluding plaster) (mm)		115, 200	115, 200	115, 200	115, 200	115, 200	115, 200	115, 200

因住宅物業的較高樓層的結構牆的厚度遞減，較高樓層的內部面積，一般比較低樓層的內部面積稍大。

The internal areas of the residential properties on the upper floors will generally be slightly larger than those on the lower floors because of the reducing thickness of the structural walls on the upper floors.

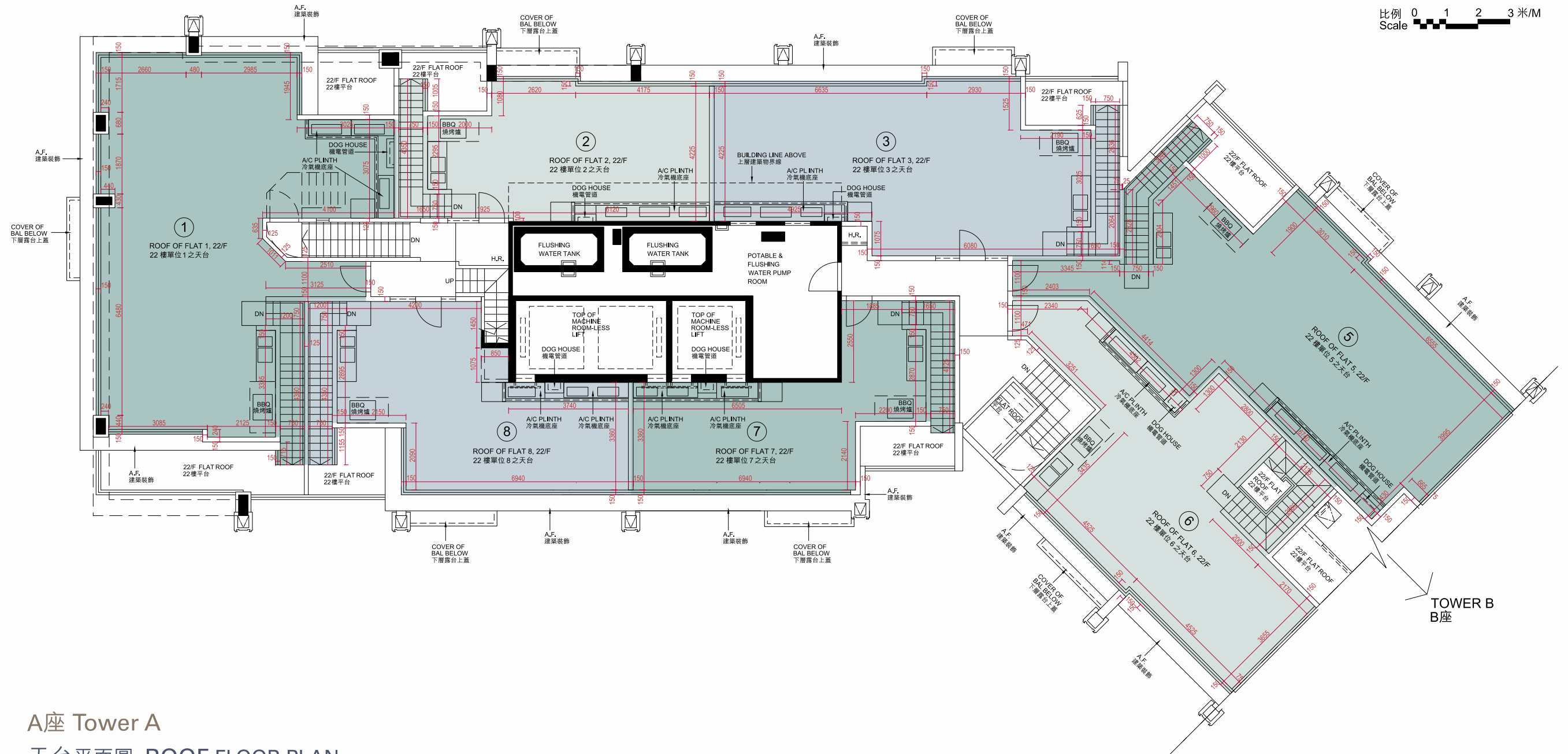
請參閱本售樓說明書第25頁為住宅物業樓面平面圖而設之備註和圖例。

Please refer to page 25 of this sales brochure for the notes and legends for the floor plans of residential properties.

10 期數的住宅物業的樓面平面圖 FLOOR PLANS OF RESIDENTIAL PROPERTIES IN THE PHASE



比例 0 1 2 3 米/M
Scale



A座 Tower A
天台平面圖 ROOF FLOOR PLAN

10 期數的住宅物業的樓面平面圖

FLOOR PLANS OF RESIDENTIAL PROPERTIES IN THE PHASE

A座 Tower A							
每個住宅物業 Each Residential Property	樓層 Floor	單位 Flat					
		1	2	3	5	6	7
層與層之間的高度 (毫米) Floor-to-Floor Height (mm)	天台 Roof	不適用 Not Applicable					
樓板 (不包括灰泥) 的厚度 (毫米) Thickness of Floor Slab (excluding plaster) (mm)							

請參閱本售樓說明書第25頁為住宅物業樓面平面圖而設之備註和圖例。
Please refer to page 25 of this sales brochure for the notes and legends for the floor plans of residential properties.

10 期數的住宅物業的樓面平面圖

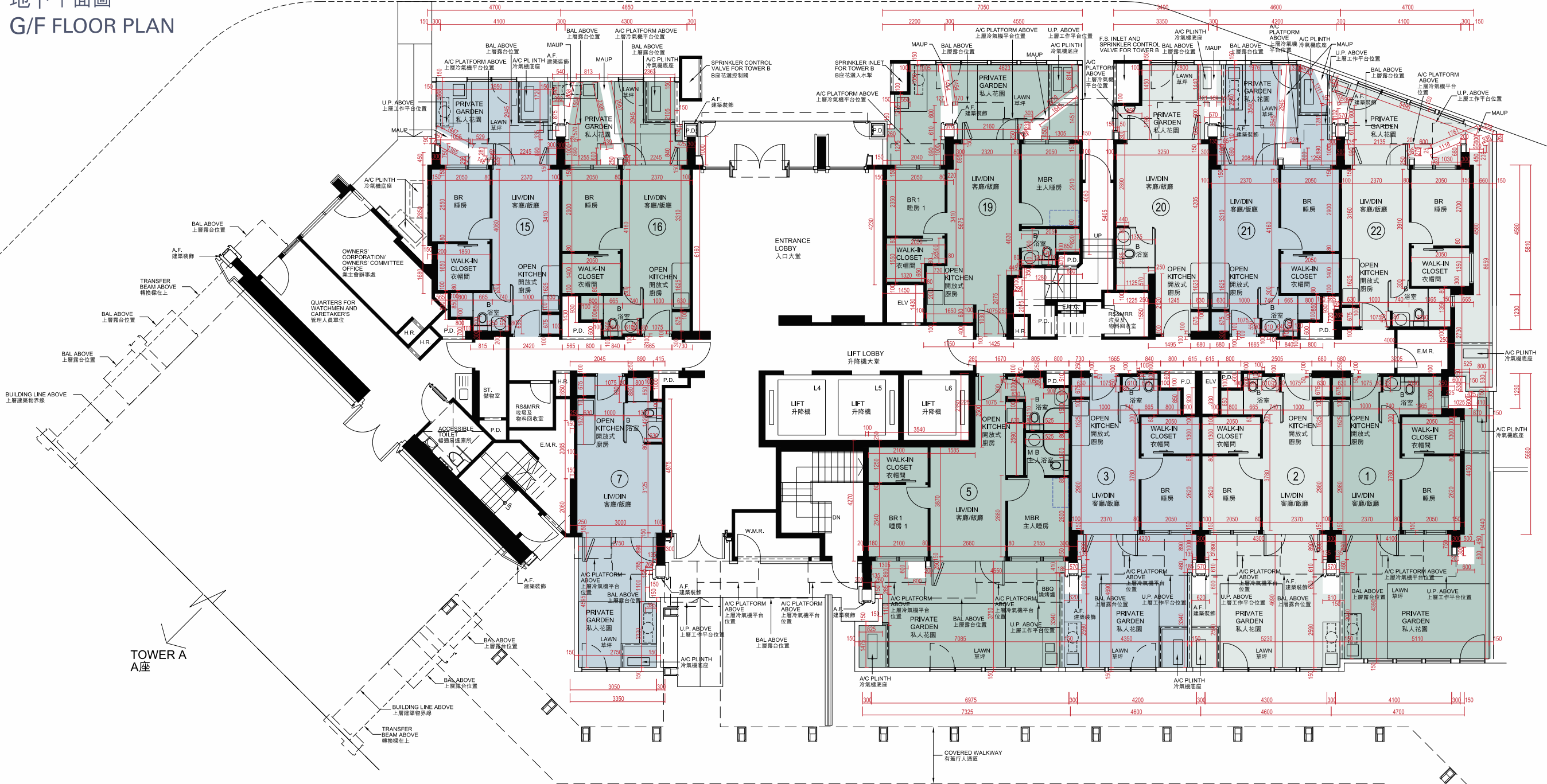
FLOOR PLANS OF RESIDENTIAL PROPERTIES IN THE PHASE



比例 0 1 2 3 米/M
Scale

B座 Tower B 地下平面圖 G/F FLOOR PLAN

EMERGENCY VEHICULAR ACCESS / DRIVEWAY
緊急車輛通道 / 車道



CABINET / BUILT-IN CABINET
櫃 / 嵌入式櫃

BBQ Grill
燒烤爐

10 期數的住宅物業的樓面平面圖

FLOOR PLANS OF RESIDENTIAL PROPERTIES IN THE PHASE

B座 Tower B												
每個住宅物業 Each Residential Property	樓層 Floor	單位 Flat										
		1	2	3	5	7	15	16	19	20	21	22
層與層之間的高度 (毫米) Floor-to-Floor Height (mm)	地下 G/F	2800, 2850, 3150	2800, 2850, 3150	2800, 2850, 3150	2800, 2850, 3150	2800, 2850, 3150	2800, 2850, 3150	2800, 2850, 3150	2800, 2850, 3150	2800, 2850, 3150	2800, 2850, 3150	2800, 2850, 3150
樓板 (不包括灰泥) 的厚度 (毫米) Thickness of Floor Slab (excluding plaster) (mm)		115, 160	115, 160	115, 160	115, 160	115, 160	115, 160	115, 160	115, 160	115, 160	115, 160	115, 160

私人花園空白位置為供維修大廈設備使用的公用地方。

Blank areas on the private garden are common areas for building facility maintenance.

因住宅物業的較高樓層的結構牆的厚度遞減，較高樓層的內部面積，一般比較低樓層的內部面積稍大。

The internal areas of the residential properties on the upper floors will generally be slightly larger than those on the lower floors because of the reducing thickness of the structural walls on the upper floors.

請參閱本售樓說明書第25頁為住宅物業樓面平面圖而設之備註和圖例。

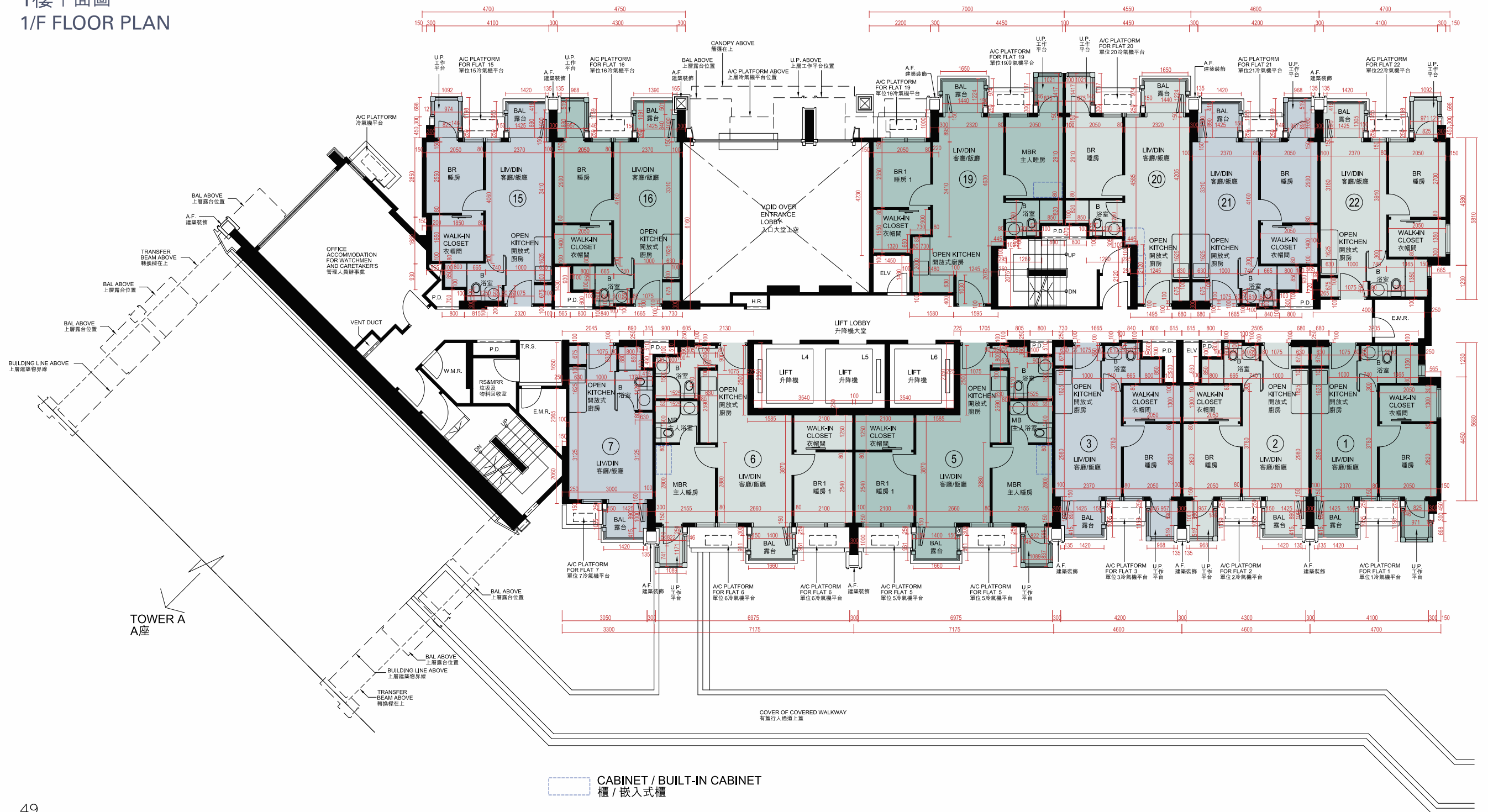
Please refer to page 25 of this sales brochure for the notes and legends for the floor plans of residential properties.

10 期數的住宅物業的樓面平面圖 FLOOR PLANS OF RESIDENTIAL PROPERTIES IN THE PHASE



比例 0 1 2 3米/M
Scale

B座 Tower B 1樓平面圖 1/F FLOOR PLAN



CABINET / BUILT-IN CABINET
櫃 / 嵌入式櫃

10 期數的住宅物業的樓面平面圖

FLOOR PLANS OF RESIDENTIAL PROPERTIES IN THE PHASE

B座 Tower B							
每個住宅物業 Each Residential Property	樓層 Floor	單位 Flat					
		1	2	3	5	6	7
層與層之間的高度 (毫米) Floor-to-Floor Height (mm)	1樓 1/F	2800, 2850, 3150	2800, 2850, 3150	2800, 2850, 3150	2800, 2850, 3150	2800, 2850, 3150	2800, 2850, 3150
樓板 (不包括灰泥) 的厚度 (毫米) Thickness of Floor Slab (excluding plaster) (mm)		115, 160	115, 160	115, 160	115, 160	115, 160	115, 160
每個住宅物業 Each Residential Property	樓層 Floor	單位 Flat					
		15	16	19	20	21	22
層與層之間的高度 (毫米) Floor-to-Floor Height (mm)	1樓 1/F	2800, 2850, 3150	2800, 2850, 3150	2800, 2850, 3150	2800, 2850, 3150	2800, 2850, 3150	2800, 2850, 3150
樓板 (不包括灰泥) 的厚度 (毫米) Thickness of Floor Slab (excluding plaster) (mm)		115, 160	115, 160	115, 160	115, 160	115, 160	115, 160

因住宅物業的較高樓層的結構牆的厚度遞減，較高樓層的內部面積，一般比較低樓層的內部面積稍大。

The internal areas of the residential properties on the upper floors will generally be slightly larger than those on the lower floors because of the reducing thickness of the structural walls on the upper floors.

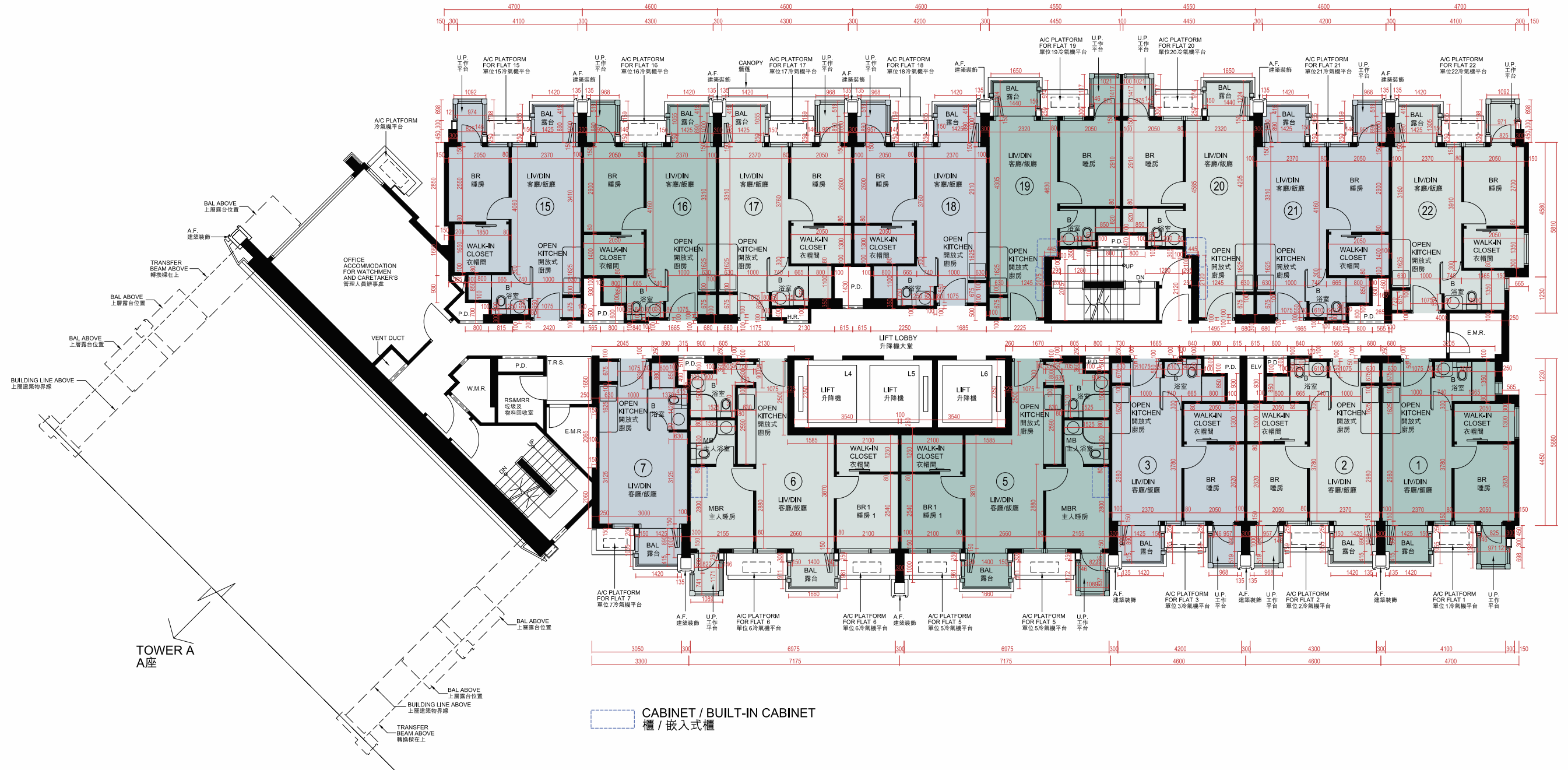
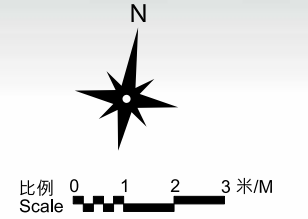
請參閱本售樓說明書第25頁為住宅物業樓面平面圖而設之備註和圖例。

Please refer to page 25 of this sales brochure for the notes and legends for the floor plans of residential properties.

10 期數的住宅物業的樓面平面圖 FLOOR PLANS OF RESIDENTIAL PROPERTIES IN THE PHASE

B座 Tower B

2樓平面圖 2/F FLOOR PLAN



10 期數的住宅物業的樓面平面圖

FLOOR PLANS OF RESIDENTIAL PROPERTIES IN THE PHASE

B座 Tower B								
每個住宅物業 Each Residential Property	樓層 Floor	單位 Flat						
		1	2	3	5	6	7	15
層與層之間的高度 (毫米) Floor-to-Floor Height (mm)	2樓 2/F	2800, 2850, 3150	2800, 2850, 3150	2800, 2850, 3150	2800, 2850, 3150	2800, 2850, 3150	2800, 2850, 3150	2800, 2850, 3150
樓板 (不包括灰泥) 的厚度 (毫米) Thickness of Floor Slab (excluding plaster) (mm)		115, 160	115, 160	115, 160	115, 160	115, 160	115, 160	115, 160
每個住宅物業 Each Residential Property	樓層 Floor	單位 Flat						
		16	17	18	19	20	21	22
層與層之間的高度 (毫米) Floor-to-Floor Height (mm)	2樓 2/F	2800, 2850, 3150	2800, 2850, 3150	2800, 2850, 3150	2800, 2850, 3150	2800, 2850, 3150	2800, 2850, 3150	2800, 2850, 3150
樓板 (不包括灰泥) 的厚度 (毫米) Thickness of Floor Slab (excluding plaster) (mm)		115, 160	115, 160	115, 160	115, 160	115, 160	115, 160	115, 160

因住宅物業的較高樓層的結構牆的厚度遞減，較高樓層的內部面積，一般比較低樓層的內部面積稍大。

The internal areas of the residential properties on the upper floors will generally be slightly larger than those on the lower floors because of the reducing thickness of the structural walls on the upper floors.

請參閱本售樓說明書第25頁為住宅物業樓面平面圖而設之備註和圖例。

Please refer to page 25 of this sales brochure for the notes and legends for the floor plans of residential properties.

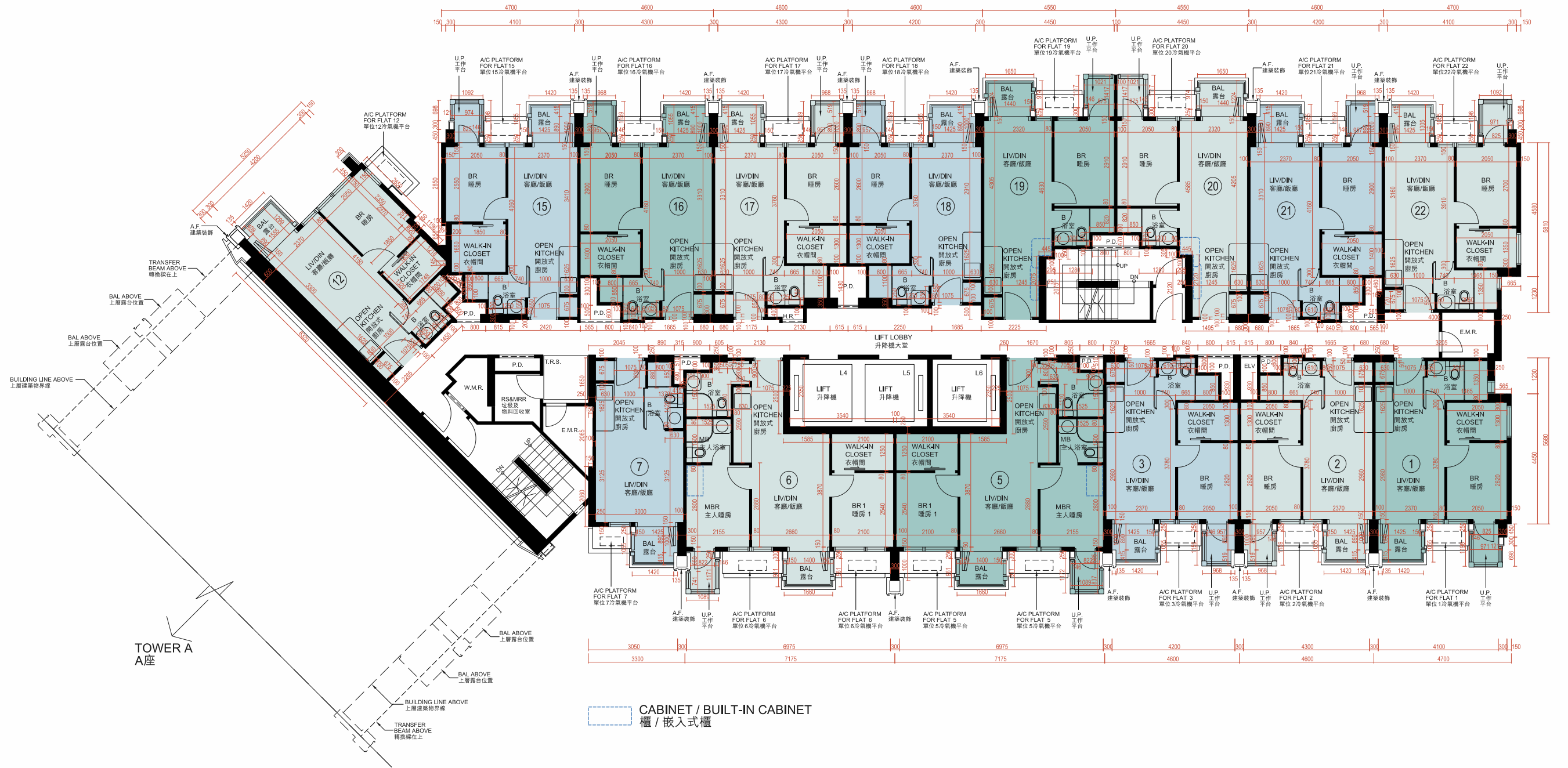
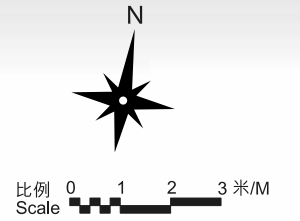
10 期數的住宅物業的樓面平面圖

FLOOR PLANS OF RESIDENTIAL PROPERTIES IN THE PHASE

B座 Tower B

3樓及5樓-7樓平面圖

3/F & 5/F-7/F FLOOR PLAN

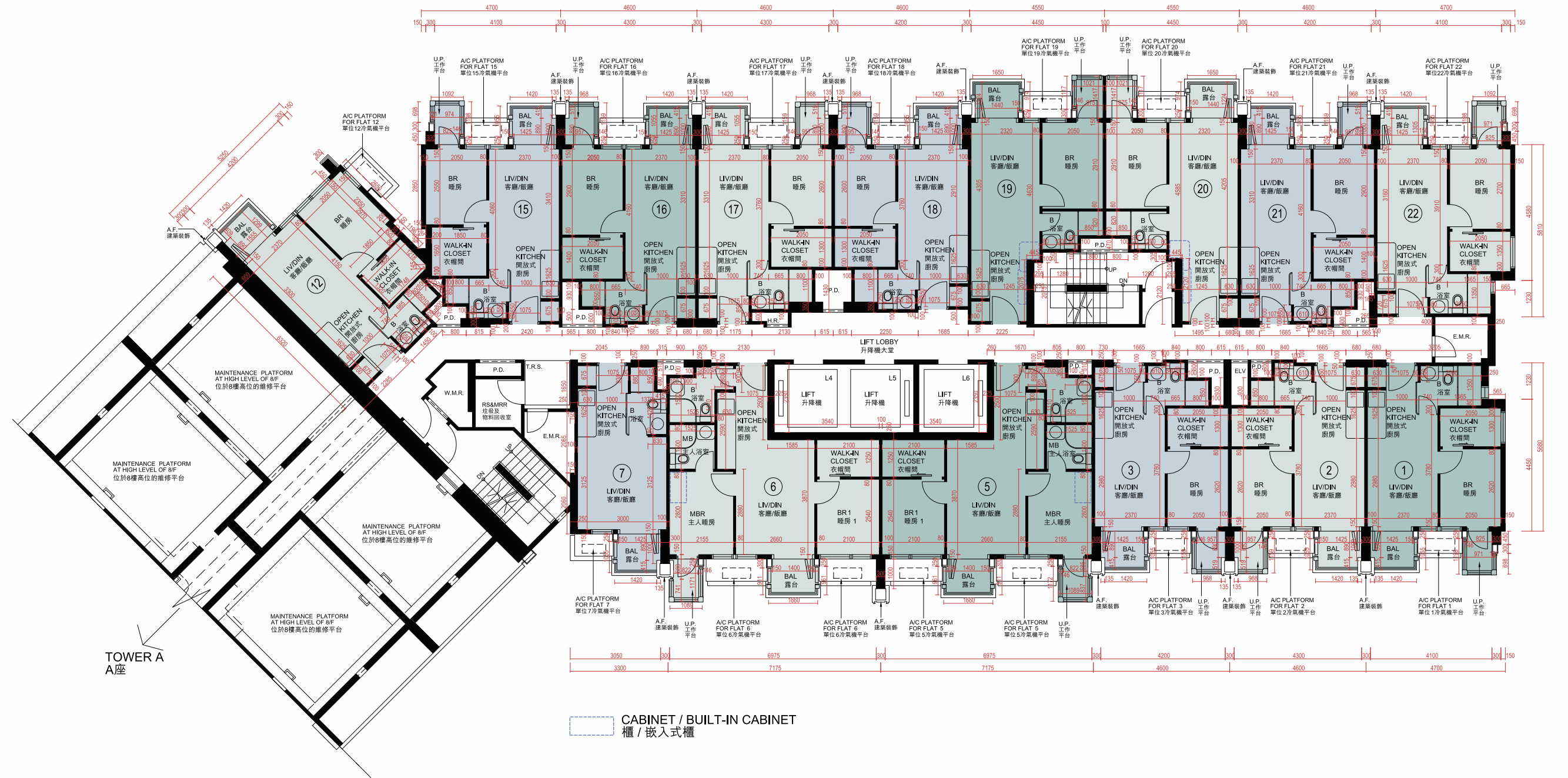
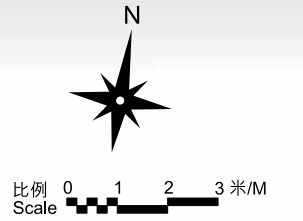


10 期數的住宅物業的樓面平面圖 FLOOR PLANS OF RESIDENTIAL PROPERTIES IN THE PHASE

B座 Tower B

8樓平面圖

8/F FLOOR PLAN



10 期數的住宅物業的樓面平面圖

FLOOR PLANS OF RESIDENTIAL PROPERTIES IN THE PHASE

B座 Tower B									
每個住宅物業 Each Residential Property	樓層 Floor	單位 Flat							
		1	2	3	5	6	7	12	15
層與層之間的高度 (毫米) Floor-to-Floor Height (mm)	3樓及5樓-8樓 3/F & 5/F-8/F	2800, 2850, 3150	2800, 2850, 3150	2800, 2850, 3150	2800, 2850, 3150	2800, 2850, 3150	2800, 2850, 3150	2800, 2850, 3150	2800, 2850, 3150
樓板 (不包括灰泥) 的厚度 (毫米) Thickness of Floor Slab (excluding plaster) (mm)		115, 160	115, 160	115, 160	115, 160	115, 160	115, 160	115, 160	115, 160
每個住宅物業 Each Residential Property	樓層 Floor	單位 Flat							
		16	17	18	19	20	21	22	
層與層之間的高度 (毫米) Floor-to-Floor Height (mm)	3樓及5樓-8樓 3/F & 5/F-8/F	2800, 2850, 3150	2800, 2850, 3150	2800, 2850, 3150	2800, 2850, 3150	2800, 2850, 3150	2800, 2850, 3150	2800, 2850, 3150	2800, 2850, 3150
樓板 (不包括灰泥) 的厚度 (毫米) Thickness of Floor Slab (excluding plaster) (mm)		115, 160	115, 160	115, 160	115, 160	115, 160	115, 160	115, 160	115, 160

因住宅物業的較高樓層的結構牆的厚度遞減，較高樓層的內部面積，一般比較低樓層的內部面積稍大。

The internal areas of the residential properties on the upper floors will generally be slightly larger than those on the lower floors because of the reducing thickness of the structural walls on the upper floors.

請參閱本售樓說明書第25頁為住宅物業樓面平面圖而設之備註和圖例。

Please refer to page 25 of this sales brochure for the notes and legends for the floor plans of residential properties.

備註：不設4樓、13樓及14樓。

Note: 4/F, 13/F and 14/F are omitted.

10 期數的住宅物業的樓面平面圖

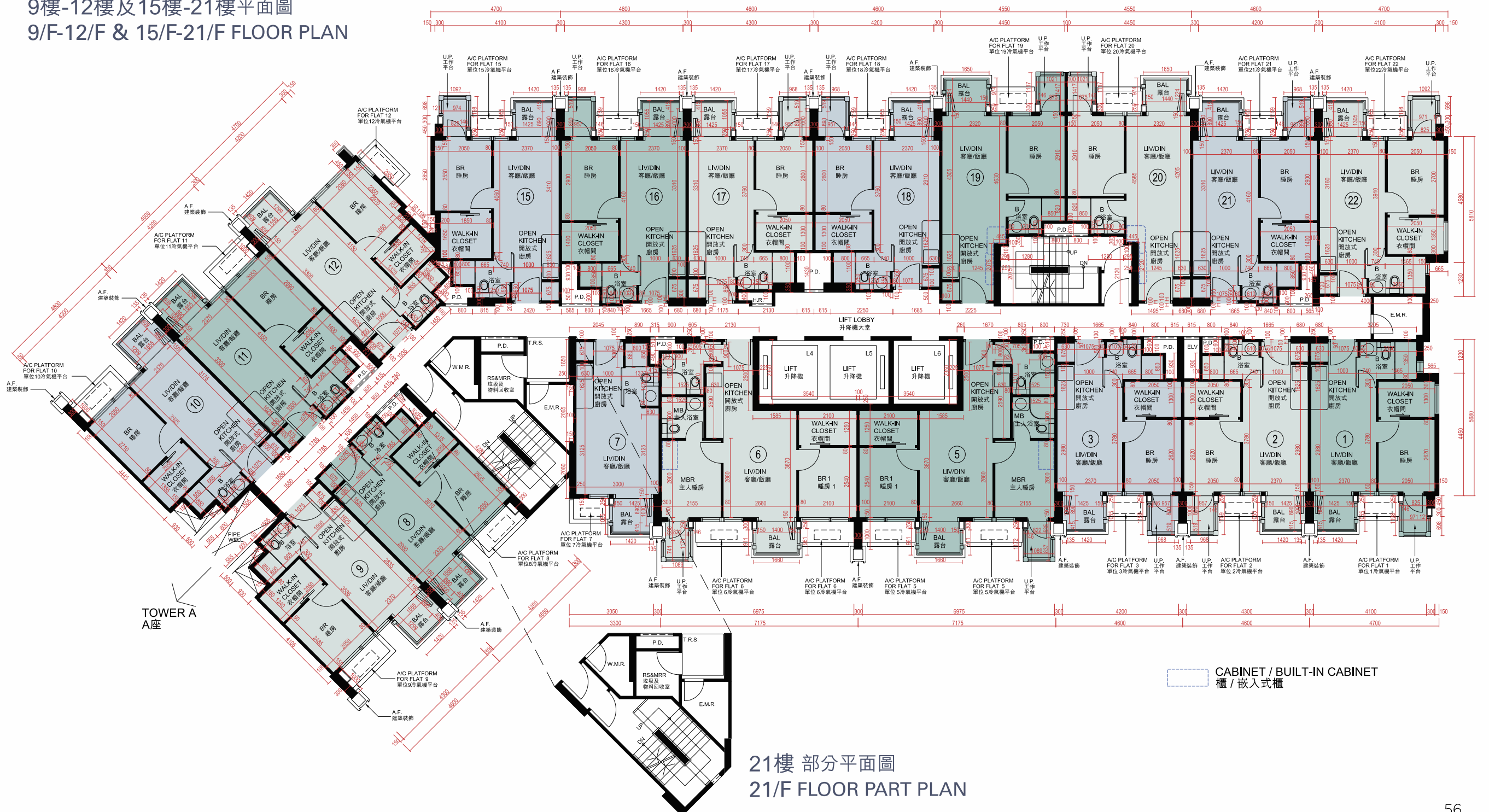
FLOOR PLANS OF RESIDENTIAL PROPERTIES IN THE PHASE



比例 0 1 2 3 米/M
Scale

B座 Tower B

9樓-12樓及15樓-21樓平面圖 9/F-12/F & 15/F-21/F FLOOR PLAN



21樓 部分平面圖
21/F FLOOR PART PLAN

10 期數的住宅物業的樓面平面圖

FLOOR PLANS OF RESIDENTIAL PROPERTIES IN THE PHASE

B座 Tower B											
每個住宅物業 Each Residential Property	樓層 Floor	單位 Flat									
		1	2	3	5	6	7	8	9	10	11
層與層之間的高度 (毫米) Floor-to-Floor Height (mm)	9樓-12樓及 15樓-20樓 9/F-12/F & 15/F-20/F	2800, 2850, 3150	2800, 2850, 3150	2800, 2850, 3150	2800, 2850, 3150	2800, 2850, 3150	2800, 2850, 3150	2800, 2850, 3150	2800, 2850, 3150	2800, 2850, 3150	2800, 2850, 3150
樓板 (不包括灰泥) 的厚度 (毫米) Thickness of Floor Slab (excluding plaster) (mm)		115, 160	115, 160	115, 160	115, 160	115, 160	115, 160	115, 160	115, 160	115, 160	115, 160
每個住宅物業 Each Residential Property	樓層 Floor	單位 Flat									
		12	15	16	17	18	19	20	21	22	
層與層之間的高度 (毫米) Floor-to-Floor Height (mm)	9樓-12樓及 15樓-20樓 9/F-12/F & 15/F-20/F	2800, 2850, 3150	2800, 2850, 3150	2800, 2850, 3150	2800, 2850, 3150	2800, 2850, 3150	2800, 2850, 3150	2800, 2850, 3150	2800, 2850, 3150	2800, 2850, 3150	2800, 2850, 3150
樓板 (不包括灰泥) 的厚度 (毫米) Thickness of Floor Slab (excluding plaster) (mm)		115, 160	115, 160	115, 160	115, 160	115, 160	115, 160	115, 160	115, 160	115, 160	115, 160

因住宅物業的較高樓層的結構牆的厚度遞減，較高樓層的內部面積，一般比較低樓層的內部面積稍大。

The internal areas of the residential properties on the upper floors will generally be slightly larger than those on the lower floors because of the reducing thickness of the structural walls on the upper floors.

請參閱本售樓說明書第25頁為住宅物業樓面平面圖而設之備註和圖例。

Please refer to page 25 of this sales brochure for the notes and legends for the floor plans of residential properties.

備註：不設4樓、13樓及14樓。

Note: 4/F, 13/F and 14/F are omitted.

10 期數的住宅物業的樓面平面圖

FLOOR PLANS OF RESIDENTIAL PROPERTIES IN THE PHASE

B座 Tower B											
每個住宅物業 Each Residential Property	樓層 Floor	單位 Flat									
		1	2	3	5	6	7	8	9	10	11
層與層之間的高度 (毫米) Floor-to-Floor Height (mm)	21樓 21/F	2950, 3300	3000, 3300	2950, 3000, 3300	3300	3300	2950, 3000, 3300	2950, 3300	3300	2950, 3300	2950, 3300
樓板 (不包括灰泥) 的厚度 (毫米) Thickness of Floor Slab (excluding plaster) (mm)		115, 160	115, 160	115, 200	115, 160	115, 160	115, 200	115, 160	115, 200	115, 160	115, 160
每個住宅物業 Each Residential Property	樓層 Floor	單位 Flat									
		12	15	16	17	18	19	20	21	22	
層與層之間的高度 (毫米) Floor-to-Floor Height (mm)	21樓 21/F	2950, 3300	2950, 3000, 3300	2950, 3000, 3300	2950, 3000, 3300	2950, 3000, 3300	2950, 3000, 3300	2950, 3000, 3300	2950, 3000, 3300	2950, 3000, 3300	2950, 3000, 3300
樓板 (不包括灰泥) 的厚度 (毫米) Thickness of Floor Slab (excluding plaster) (mm)		115, 200	115, 160	115, 160	115, 160	115, 160	115, 160	115, 160	115, 160	115, 160	115, 160

因住宅物業的較高樓層的結構牆的厚度遞減，較高樓層的內部面積，一般比較低樓層的內部面積稍大。

The internal areas of the residential properties on the upper floors will generally be slightly larger than those on the lower floors because of the reducing thickness of the structural walls on the upper floors.

請參閱本售樓說明書第25頁為住宅物業樓面平面圖而設之備註和圖例。

Please refer to page 25 of this sales brochure for the notes and legends for the floor plans of residential properties.

10 期數的住宅物業的樓面平面圖

FLOOR PLANS OF RESIDENTIAL PROPERTIES IN THE PHASE

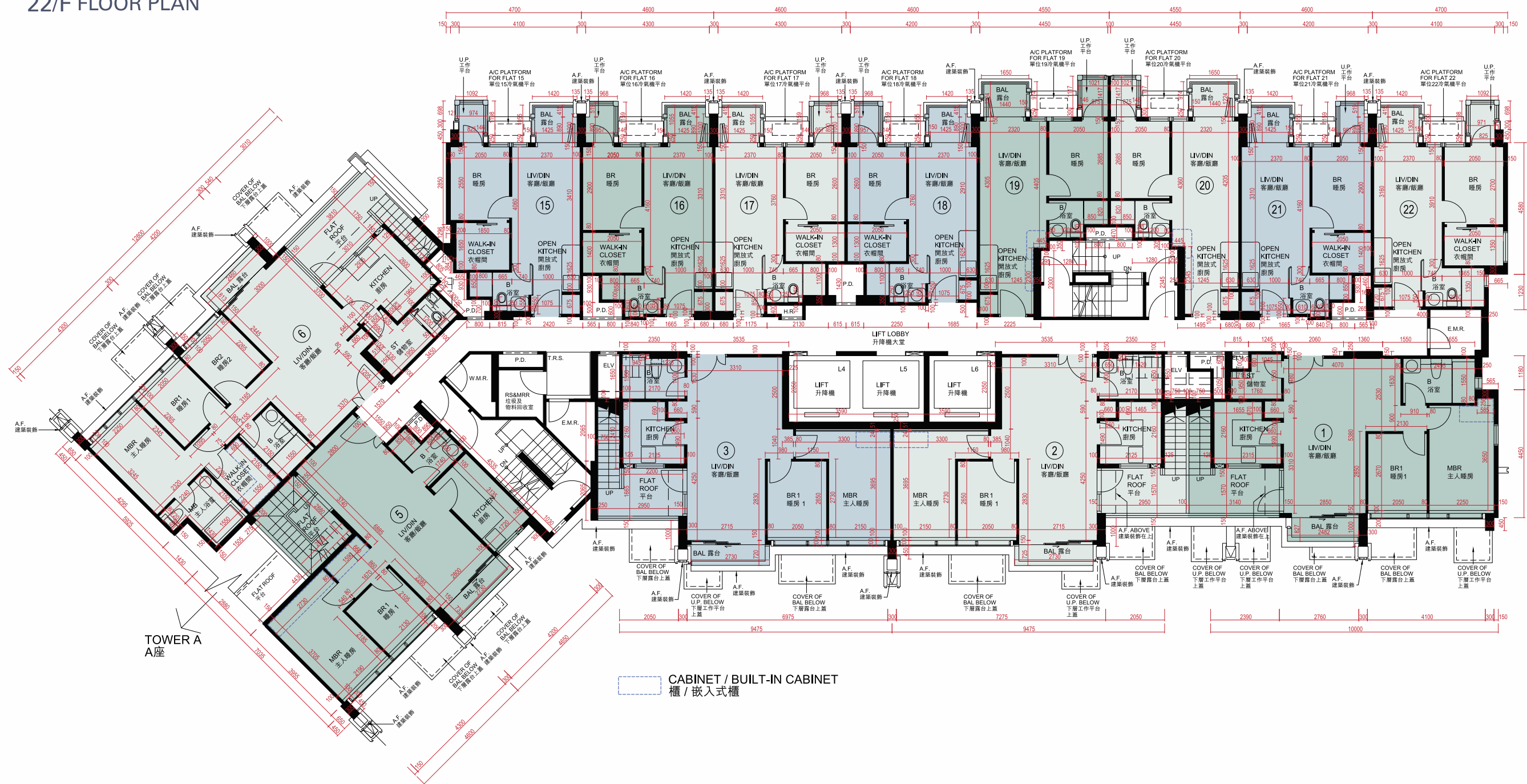
B座 Tower B

22樓平面圖

22/F FLOOR PLAN



比例 0 1 2 3 米/M
Scale



10 期數的住宅物業的樓面平面圖

FLOOR PLANS OF RESIDENTIAL PROPERTIES IN THE PHASE

B座 Tower B								
每個住宅物業 Each Residential Property	樓層 Floor	單位 Flat						
		1	2	3	5	6	15	16
層與層之間的高度 (毫米) Floor-to-Floor Height (mm)	22樓 22/F	3400	3400	3400, 3600	3400	3400	3400	3400
樓板 (不包括灰泥) 的厚度 (毫米) Thickness of Floor Slab (excluding plaster) (mm)		115, 200	115, 175, 200	115, 175, 200	115, 175, 200	115, 200	115, 200	115, 200
每個住宅物業 Each Residential Property	樓層 Floor	單位 Flat						
		17	18	19	20	21	22	
層與層之間的高度 (毫米) Floor-to-Floor Height (mm)	22樓 22/F	3400, 3600	3400, 3600	3400, 3600	3400	3400	3400	
樓板 (不包括灰泥) 的厚度 (毫米) Thickness of Floor Slab (excluding plaster) (mm)		115, 200	115, 200	115, 200	115, 200	115, 200	115, 200	

因住宅物業的較高樓層的結構牆的厚度遞減，較高樓層的內部面積，一般比較低樓層的內部面積稍大。

The internal areas of the residential properties on the upper floors will generally be slightly larger than those on the lower floors because of the reducing thickness of the structural walls on the upper floors.

請參閱本售樓說明書第25頁為住宅物業樓面平面圖而設之備註和圖例。

Please refer to page 25 of this sales brochure for the notes and legends for the floor plans of residential properties.

10 期數的住宅物業的樓面平面圖 FLOOR PLANS OF RESIDENTIAL PROPERTIES IN THE PHASE

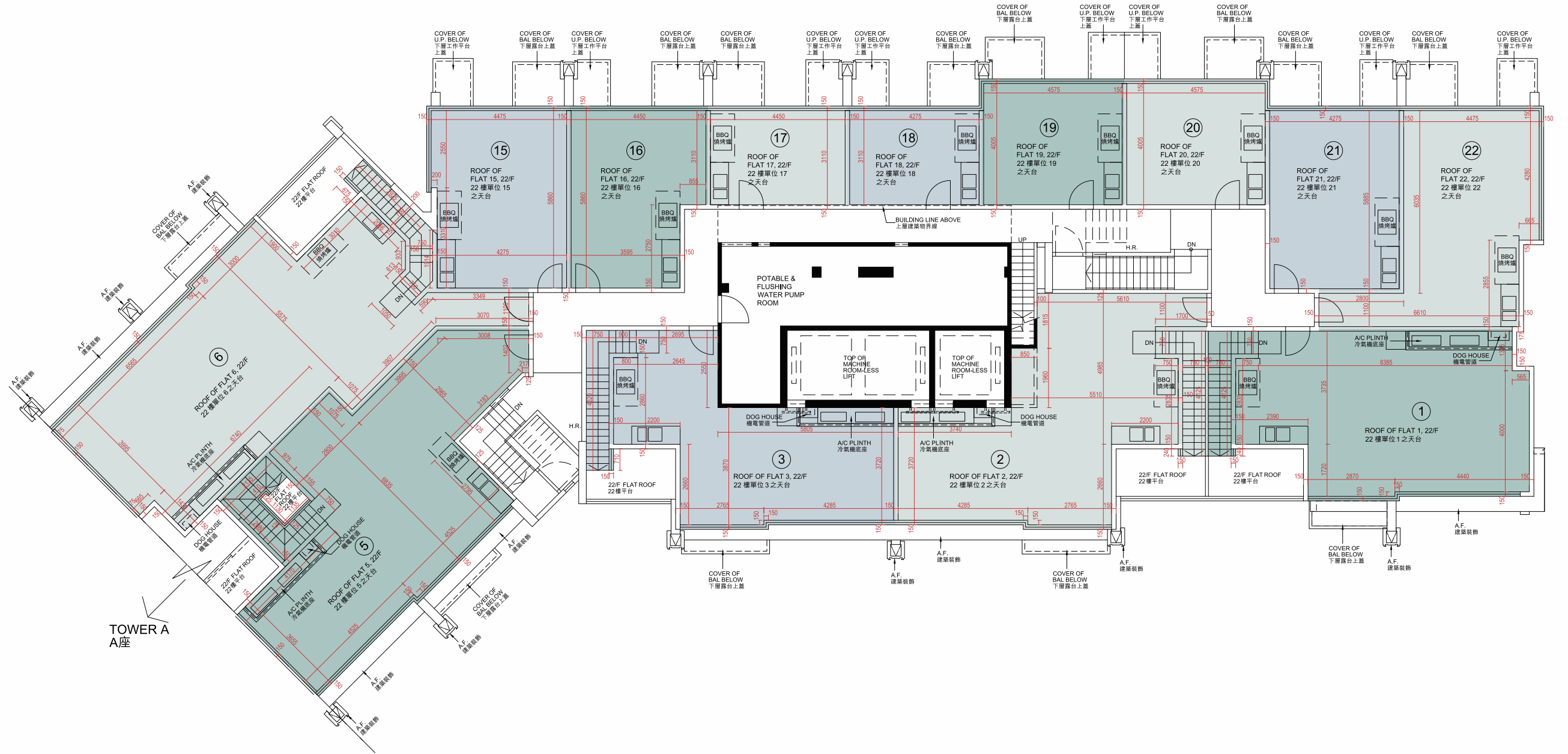
B座 Tower B

天台平面圖

ROOF FLOOR PLAN



比例 0 1 2 3 米/M
Scale



10 期數的住宅物業的樓面平面圖

FLOOR PLANS OF RESIDENTIAL PROPERTIES IN THE PHASE

B座 Tower B								
每個住宅物業 Each Residential Property	樓層 Floor	單位 Flat						
		1	2	3	5	6	15	16
層與層之間的高度 (毫米) Floor-to-Floor Height (mm)	天台 Roof	不適用 Not Applicable						
樓板 (不包括灰泥) 的厚度 (毫米) Thickness of Floor Slab (excluding plaster) (mm)								
每個住宅物業 Each Residential Property	樓層 Floor	單位 Flat						
		17	18	19	20	21	22	
層與層之間的高度 (毫米) Floor-to-Floor Height (mm)	天台 Roof	不適用 Not Applicable						
樓板 (不包括灰泥) 的厚度 (毫米) Thickness of Floor Slab (excluding plaster) (mm)								

請參閱本售樓說明書第23頁為住宅物業樓面平面圖而設之備註和圖例。
Please refer to page 23 of this sales brochure for the notes and legends for the floor plans of residential properties.