

FLOOR PLANS OF RESIDENTIAL PROPERTIES IN THE PHASE 期數的住宅物業的樓面平面圖

LEGEND OF THE TERMS AND ABBREVIATIONS FOR FLOOR PLANS

樓面平面圖中所使用名詞及簡稱之圖例

ACCESS PANEL	= ACCESS PANEL	維修口
A/C P.	= AIR-CONDITIONER PLATFORM	冷氣機平台
A/C PLANT ROOM	= AIR-CONDITIONING PLANT ROOM	冷氣機房
A/C UNIT FOR FLAT X	= AIR-CONDITIONER OUTDOOR UNIT FOR FLAT X	X 單位之冷氣機室外機
A/C UNIT FOR FLAT X AT X/F	= AIR-CONDITIONER OUTDOOR UNIT FOR FLAT X AT X/F	X 樓 X 單位之冷氣機室外機
A/C UNIT FOR FLAT X AT H/L AND A/C UNIT FOR FLAT X AT L/L	= AIR-CONDITIONER OUTDOOR UNIT FOR FLAT X AT HIGH LEVEL AND AIR-CONDITIONER OUTDOOR UNIT FOR FLAT X AT LOW LEVEL	X 單位之冷氣機室外機於高位及 X 單位之冷氣機室外機於低位
A/C UNIT FOR FLAT X OF ELVERUM TOWER X	= AIR-CONDITIONER OUTDOOR UNIT FOR FLAT X OF ELVERUM TOWER X	ELVERUM 第 X 座 X 單位之冷氣機室外機
ACOUSTIC PANEL	= ACOUSTIC PANEL	隔音板
AF	= ARCHITECTURAL FEATURE	建築裝飾
AF LINE ABOVE	= ARCHITECTURAL FEATURE LINE ABOVE	建築裝飾界線置上
AF LINE ABOVE (FOR 33/F ONLY)	= ARCHITECTURAL FEATURE LINE ABOVE (FOR 33/F ONLY)	建築裝飾界線置上 (只位於 33 樓)
AF M.	= ARCHITECTURAL FEATURE MOULDING	建築裝飾線條
AF M. ABOVE	= ARCHITECTURAL FEATURE MOULDING ABOVE	建築裝飾線條置上
AF M. LINE ABOVE (FOR 33/F ONLY)	= ARCHITECTURAL FEATURE MOULDING LINE ABOVE (FOR 33/F ONLY)	建築裝飾線條界線置上 (只位於 33 樓)
A.FIN AT 5/F H/L	= ARCHITECTURAL FEATURE FINS AT 5/F HIGH LEVEL	建築裝飾鰭於 5 樓高位
A.FIN AT 8/F, 11/F, 16/F, 22/F & 26/F H/L	= ARCHITECTURAL FEATURE FINS AT 8/F, 11/F, 16/F, 22/F & 26/F HIGH LEVEL	建築裝飾鰭於 8 樓、11 樓、16 樓、22 樓及 26 樓高位
A.FIN AT 29/F H/L	= ARCHITECTURAL FEATURE FINS AT 29/F AT HIGH LEVEL	建築裝飾鰭於 29 樓高位
BAL.	= BALCONY	露台
BATH	= BATHROOM	浴室
BATH. 1	= BATHROOM 1	浴室 1
BATH. 2	= BATHROOM 2	浴室 2
BR1	= BEDROOM 1	睡房 1
BR2	= BEDROOM 2	睡房 2
BR3	= BEDROOM 3	睡房 3
BUILDING LINE ABOVE	= BUILDING LINE ABOVE	建築物界線置上
BUILDING LINE ABOVE (FOR 33/F ONLY)	= BUILDING LINE ABOVE (FOR 33/F ONLY)	建築物界線置上 (只位於 33 樓)
C.D.	= CABLE DUCT	電纜槽
COMMON AREA FOR PIPE DUCT MAINTENANCE	= COMMON AREA FOR PIPE DUCT MAINTENANCE	供管道槽管道槽維修用之公用範圍
COMMON FLAT ROOF	= COMMON FLAT ROOF	公用平台
CORRIDOR	= CORRIDOR	走廊
D.H./ DOG HOUSE	= DOG HOUSE	管道房

Notes:

1. There may be architectural features on external walls of some of the floors.
2. Common pipes exposed and/ or enclosed in cladding are located at/ adjacent to balcony and/ or float roof and/ or utility platform and/ or air-conditioning platform and/ or external wall and/ or roof of some residential units.
3. There are sunken slabs and/ or ceiling bulkheads at living rooms, dining rooms, bedrooms, utility rooms, corridors, bathrooms, lavatories, open kitchens and kitchens of some residential units for the air-conditioning system and/ or mechanical and electrical service. There are exposed pipes/ ductings for air-conditioning system and/ or mechanical and electrical service within some utility rooms and/ or lavatories.
4. Balconies and utility platforms are non-enclosed areas.
5. Symbols of fittings and fitments shown on the floor plans, such as bathtubs, sink, water closets, shower, sink counter, etc, are architectural symbols retrieved from the latest approved general building plans for general indication only.
6. For some residential units, the air-conditioning platform(s) outside the unit will be placed with air-conditioner outdoor unit(s) belonging to that unit and/ or other residential units.

備註:

1. 部份樓層外牆範圍設有建築裝飾。
2. 部份住宅單位的露台及/或平台及/或工作平台及/或冷氣機平台及/或外牆及/或天台及/或附近設有外露及/或藏於外牆裝飾板內之公用喉管。
3. 部份住宅單位客廳、飯廳、睡房、工作間、走廊、浴室、洗手間、開放式廚房以及廚房天花有跌級樓板及/或假天花用以裝置冷氣系統及/或其他機電設備。部份工作間及/或洗手間內設有冷氣及/或機電設備之外露喉管/管道。
4. 露台及工作平台為不可封閉地方。
5. 樓面平面圖上所顯示的形象裝置符號，例如浴缸、洗滌盆、坐廁、淋浴間、洗滌盆櫃等乃摘自最新的經批准的建築圖則，只作一般性標誌。
6. 部份住宅物業外的冷氣機平台將會放置屬於其單位及/或其他住宅物業的一部或多部冷氣機室外機。

FLOOR PLANS OF RESIDENTIAL PROPERTIES IN THE PHASE 期數的住宅物業的樓面平面圖

LEGEND OF THE TERMS AND ABBREVIATIONS FOR FLOOR PLANS

樓面平面圖中所使用名詞及簡稱之圖例

DN	= DOWN	落
EAD	= EXHAUST AIR DUCT	排氣管道
ELECT RM	= ELECTRICAL ROOM	電力房
ELV	= EXTRA-LOW VOLTAGE DUCT	特低壓電管道槽
EMR	= ELECTRICAL METER ROOM	電錶房
FAD	= FRESH AIR DUCT	鮮風管道
FAN ROOM	= FAN ROOM	風扇房
FILTRATION BELOW	= FILTRATION BELOW	濾水設備置下
FL. WATER PUMP ROOM/ FLUSH WATER PUMP ROOM	= FLUSHING WATER PUMP ROOM	沖廁水泵房
FL. WATER TANK ROOM	= FLUSHING WATER TANK ROOM	沖廁水缸房
FLAT ROOF	= FLAT ROOF	平台
FLAT ROOF AT 35/F	= FLAT ROOF AT 35/F	平台於 35 樓
F.S. DRENCHER PUMP ROOM	= FIRE SERVICES DRENCHER PUMP ROOM	消防水簾泵房
F.S. PUMP ROOM	= FIRE SERVICES PUMP ROOM	消防泵房
F.S. WATER TANK ROOM	= FIRE SERVICES WATER TANK ROOM	消防水缸房
G.M.C.	= GAS METER CABINET	氣體錶櫃
G.M.C AT BELOW	= GAS METER CABINET AT BELOW	氣體錶櫃置下
HORIZONTAL PROJECTION	= HORIZONTAL PROJECTION	橫向伸出物
HR	= HOSE REEL	消防喉轆
JACUZZI BATH	= JACUZZI BATH	按摩浴缸
KIT.	= KITCHEN	廚房
LAV.	= LAVATORY	洗手間
LAV.2	= LAVATORY 2	洗手間 2
LIFT	= LIFT	升降機
LIFT LOBBY	= LIFT LOBBY	升降機大堂
LIFT MACHINE ROOM	= LIFT MACHINE ROOM	升降機機房
LIFT SHAFT	= LIFT SHAFT	升降機槽
LIV./DIN.	= LIVING ROOM / DINING ROOM	客廳 / 飯廳
M.BATH	= MASTER BATHROOM	主人浴室
MBR	= MASTER BEDROOM	主人睡房
M.L.	= METAL LOUVRE	金屬百葉
M.L. AT H/L	= METAL LOUVRE AT HIGH LEVEL	金屬百葉於高位

Notes:

1. There may be architectural features on external walls of some of the floors.
2. Common pipes exposed and/ or enclosed in cladding are located at/ adjacent to balcony and/ or flat roof and/ or utility platform and/ or air-conditioning platform and/ or external wall and/ or roof of some residential units.
3. There are sunken slabs and/ or ceiling bulkheads at living rooms, dining rooms, bedrooms, utility rooms, corridors, bathrooms, lavatories, open kitchens and kitchens of some residential units for the air-conditioning system and/ or mechanical and electrical service. There are exposed pipes/ ductings for air-conditioning system and/ or mechanical and electrical service within some utility rooms and/ or lavatories.
4. Balconies and utility platforms are non-enclosed areas.
5. Symbols of fittings and fitments shown on the floor plans, such as bathtubs, sink, water closets, shower, sink counter, etc, are architectural symbols retrieved from the latest approved general building plans for general indication only.
6. For some residential units, the air-conditioning platform(s) outside the unit will be placed with air-conditioner outdoor unit(s) belonging to that unit and/ or other residential units.

備註:

1. 部份樓層外牆範圍設有建築裝飾。
2. 部份住宅單位的露台及/或平台及/或工作平台及/或冷氣機平台及/或外牆及/或天台及/或附近設有外露及/或藏於外牆裝飾板內之公用喉管。
3. 部份住宅單位客廳、飯廳、睡房、工作間、走廊、浴室、洗手間、開放式廚房以及廚房天花有跌級樓板及/或假天花用以裝置冷氣系統及/或其他機電設備。部份工作間及/或洗手間內設有冷氣及/或機電設備之外露喉管/管道。
4. 露台及工作平台為不可封閉地方。
5. 樓面平面圖上所顯示的形象裝置符號，例如浴缸、洗滌盆、坐廁、淋浴間、洗滌盆櫃等乃摘自最新的經批准的建築圖則，只作一般性標誌。
6. 部份住宅物業外的冷氣機平台將會放置屬於其單位及/或其他住宅物業的一部或多部冷氣機室外機。

FLOOR PLANS OF RESIDENTIAL PROPERTIES IN THE PHASE 期數的住宅物業的樓面平面圖

LEGEND OF THE TERMS AND ABBREVIATIONS FOR FLOOR PLANS

樓面平面圖中所使用名詞及簡稱之圖例

OPEN KIT.	= OPEN KITCHEN	開放式廚房
P.D./ PD	= PIPE DUCT	管道槽
POOL DECK	= POOL DECK	泳池平台
POT. WATER PUMP ROOM	= POTABLE WATER PUMP ROOM	食水泵房
POT. WATER TANK ROOM	= POTABLE WATER TANK ROOM	食水缸房
R.C. FINS ABOVE	= REINFORCED CEMENT CONCRETE FINS ABOVE	鋼筋混凝土鰭置上
R.C. SLAB	= REINFORCED CEMENT CONCRETE SLAB	鋼筋混凝土樓板
ROOF (FOR FLAT X)	= ROOF (FOR FLAT X)	天台 (屬於單位 X)
RS & MRR	= REFUSE STORAGE AND MATERIAL RECOVERY ROOM	垃圾及物料回收房
SINK	= SINK	洗手盤
SMATV	= SATELLITE MASTER ANTENNA TELEVISION ROOM	衛星電視公共天線房
SWIMMING POOL	= SWIMMING POOL	游泳池
TRANSFER PLATE	= TRANSFER PLATE	轉換層
UP	= UP	上
U.P.	= UTILITY PLATFORM	工作平台
UPPER PART OF A/C PLANT ROOM	= UPPER PART OF AIR-CONDITIONING PLANT ROOM	上層之冷氣機房
UPPER PART OF F.S. DRENCHER PUMP ROOM	= UPPER PART OF FIRE SERVICES DRENCHER PUMP ROOM	上層之消防水簾泵房
UTIL.	= UTILITY ROOM	工作間
WMC	= WATER METER CABINET	水錶櫃

Notes:

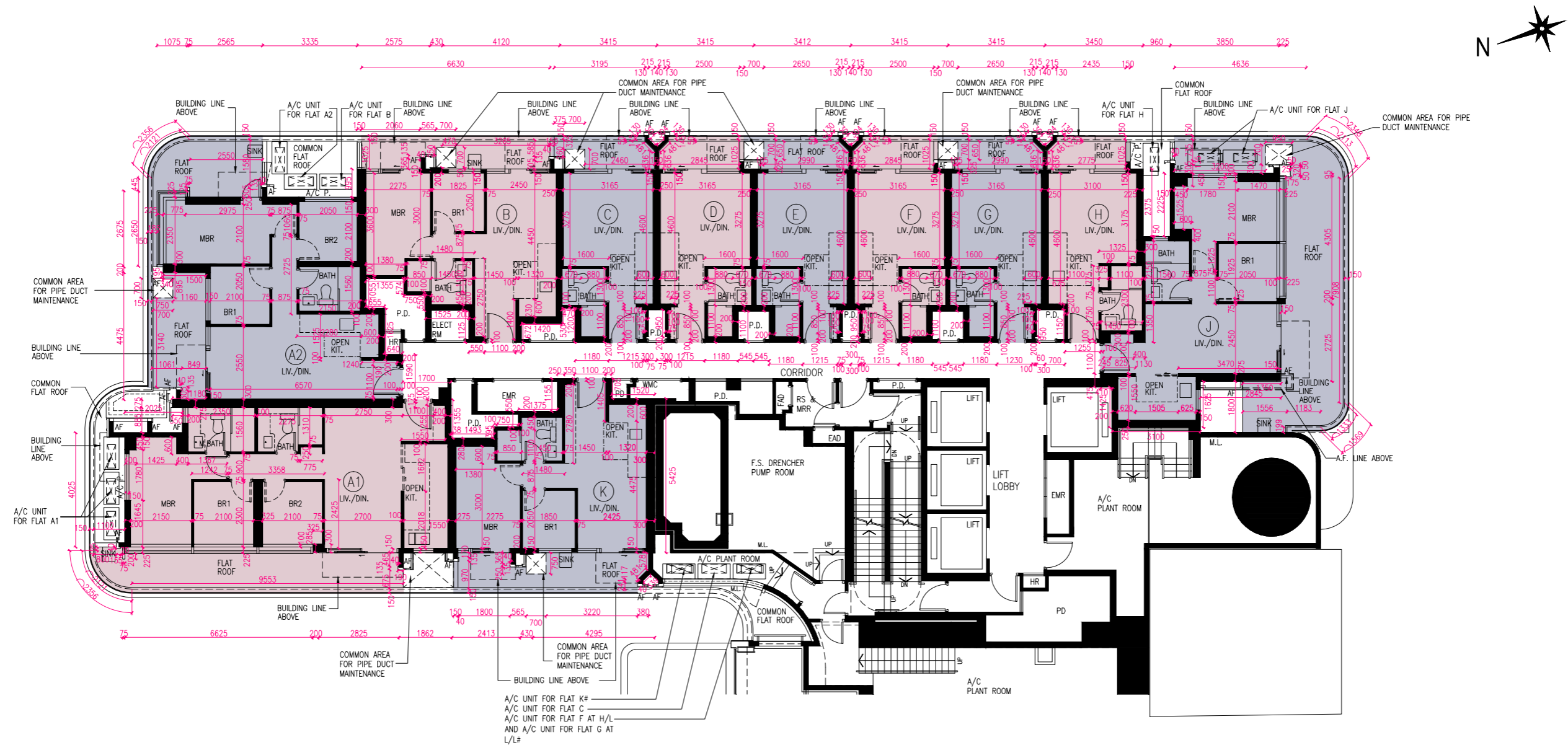
1. There may be architectural features on external walls of some of the floors.
2. Common pipes exposed and/ or enclosed in cladding are located at/ adjacent to balcony and/ or float roof and/ or utility platform and/ or air-conditioning platform and/ or external wall and/ or roof of some residential units.
3. There are sunken slabs and/ or ceiling bulkheads at living rooms, dining rooms, bedrooms, utility rooms, corridors, bathrooms, lavatories, open kitchens and kitchens of some residential units for the air-conditioning system and/ or mechanical and electrical service. There are exposed pipes/ ductings for air-conditioning system and/ or mechanical and electrical service within some utility rooms and/ or lavatories.
4. Balconies and utility platforms are non-enclosed areas.
5. Symbols of fittings and fitments shown on the floor plans, such as bathtubs, sink, water closets, shower, sink counter, etc, are architectural symbols retrieved from the latest approved general building plans for general indication only.
6. For some residential units, the air-conditioning platform(s) outside the unit will be placed with air-conditioner outdoor unit(s) belonging to that unit and/ or other residential units.

備註:

1. 部份樓層外牆範圍設有建築裝飾。
2. 部份住宅單位的露台及/或平台及/或工作平台及/或冷氣機平台及/或外牆及/或天台及/或附近設有外露及/或藏於外牆裝飾板內之公用喉管。
3. 部份住宅單位客廳、飯廳、睡房、工作間、走廊、浴室、洗手間、開放式廚房以及廚房天花有跌級樓板及/或假天花用以裝置冷氣系統及/或其他機電設備。部份工作間及/或洗手間內設有冷氣及/或機電設備之外露喉管/管道。
4. 露台及工作平台為不可封閉地方。
5. 樓面平面圖上所顯示的形象裝置符號，例如浴缸、洗滌盆、坐廁、淋浴間、洗滌盆櫃等乃摘自最新的經批准的建築圖則，只作一般性標誌。
6. 部份住宅物業外的冷氣機平台將會放置屬於其單位及/或其他住宅物業的一部或多部冷氣機室外機。

FLOOR PLANS OF RESIDENTIAL PROPERTIES IN THE PHASE 期數的住宅物業的樓面平面圖

ELVERUM TOWER 1 GARDEN FLOOR (2/F) | ELVERUM 第1座 花園層 (2樓)



TWO AIR-CONDITIONERS OUTDOOR UNITS WILL BE INSTALLED WITH A DOUBLE DECK SYSTEM

兩部冷氣機室外機將會以雙層系統型式安裝

Scale 比例 Metres 米 0 2 4 6 8

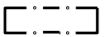
FLOOR PLANS OF RESIDENTIAL PROPERTIES IN THE PHASE 期數的住宅物業的樓面平面圖

		Floor 樓層	Flat 單位										
			A1	A2	B	C	D	E	F	G	H	J	K
Elverum Tower 1 Elverum 第 1 座	Floor-to-floor height of each residential property (mm) 每個住宅物業的層與層之間的高度 (毫米)	Garden Floor (2/F) 花園層 (2 樓)	2850, 2900, 3050, 3150	2850, 3050, 3150	2850, 2900, 3050, 3150	2850, 2900, 3050, 3150	2850, 2900, 3050, 3150	2850, 2900, 3050, 3150	2850, 2900, 3050, 3150	2850, 2900, 3050, 3150	2850, 2900, 3050, 3150	2850, 2900, 3050, 3150	2850, 2900, 3050, 3150
	The thickness of the floor slabs (excluding plaster) of each residential property (mm) 每個住宅物業的樓板的厚度 (不包括灰泥)(毫米)	Garden Floor (2/F) 花園層 (2 樓)	150, 175	150, 175	175, 200	150, 175	150, 175	150, 175	150, 175	150, 175	150, 175	150, 175	150, 175, 200

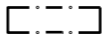
The internal areas of the residential properties on the upper floors will generally be slightly larger than those on the lower floors because of the reducing thickness of the structural walls on the upper floors. (This does not apply to the residential properties in the Phase because the design of the Phase does not involve reducing thickness of structural walls of residential properties on the upper floors and hence internal areas of those residential properties will not be increased.)

因住宅物業的較高樓層的結構牆的厚度遞減，較高樓層的內部面積，一般比較低樓層的內部面積稍大。(不適用於期數內的住宅物業，因為期數的設計是不牽涉較高樓層的住宅物業的結構牆的厚度遞減。因此，該等住宅物業的內部面積不會增加。)

Notes:

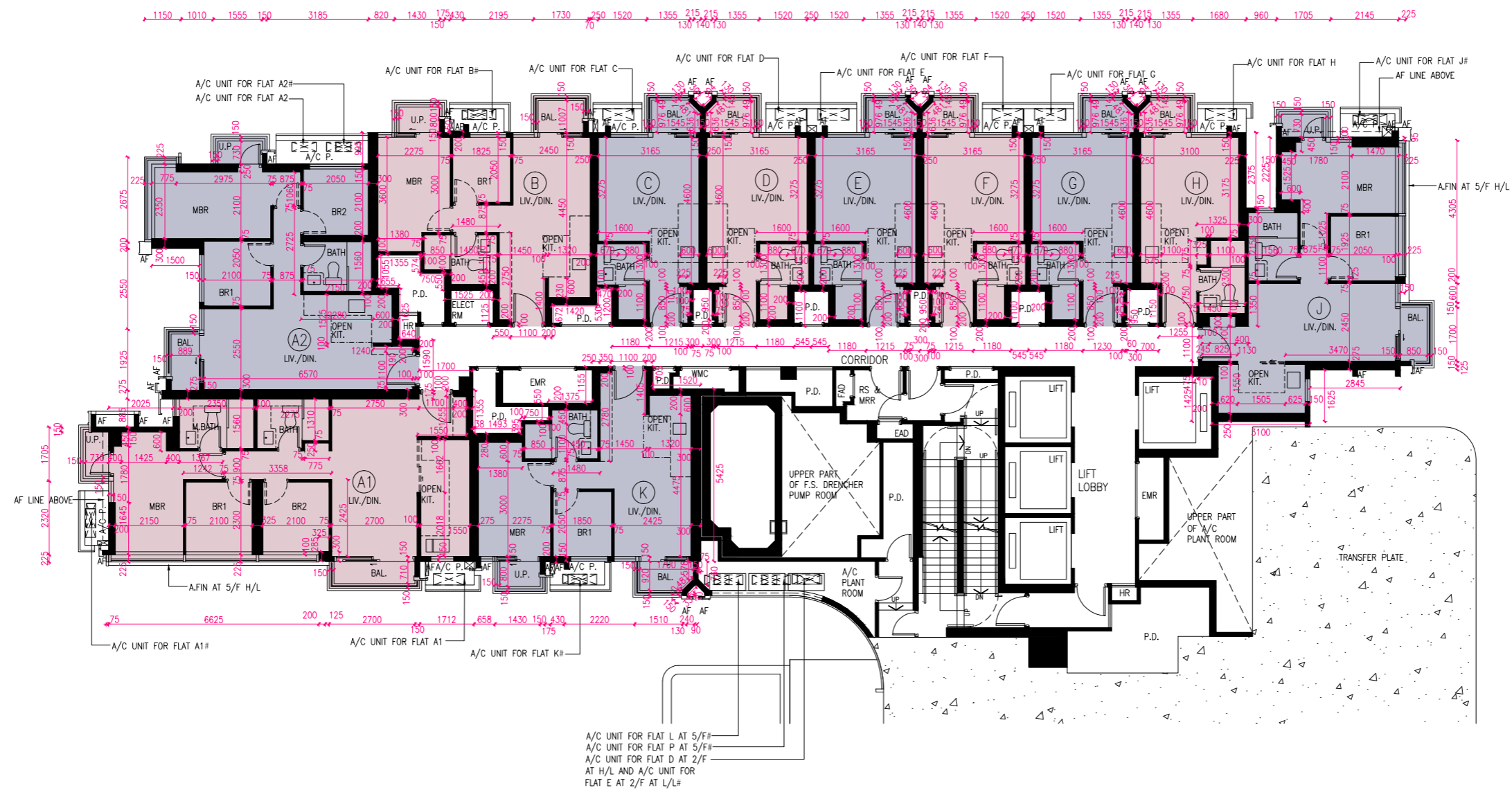
- The dimensions of floor plans are all structural dimensions in millimetre.
- Please refer to Pages AL001 to AL003 of this sales brochure for remarks, legend of the terms and abbreviations shown in the floor plan.
-  Dotted line in a residential unit with open kitchen delineates the extent of open kitchen area.

備註:

- 平面圖所列之尺寸數字為毫米標示的建築結構尺寸。
- 平面圖中顯示之附註、名詞及簡稱圖例請參閱本售樓說明書第AL001至AL003頁。
-  設有開放式廚房的住宅單位內所顯示的虛線代表開放式廚房範圍。

FLOOR PLANS OF RESIDENTIAL PROPERTIES IN THE PHASE 期數的住宅物業的樓面平面圖

ELVERUM TOWER 1 3/F | ELVERUM 第1座3樓



TWO AIR-CONDITIONERS OUTDOOR UNITS WILL BE INSTALLED WITH A DOUBLE DECK SYSTEM

兩部冷氣機室外機將會以雙層系統型式安裝

Scale 比例 Metres 米 0 2 4 6 8

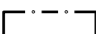
FLOOR PLANS OF RESIDENTIAL PROPERTIES IN THE PHASE 期數的住宅物業的樓面平面圖

		Floor 樓層	Flat 單位										
			A1	A2	B	C	D	E	F	G	H	J	K
Elverum Tower 1 Elverum 第 1 座	Floor-to-floor height of each residential property (mm) 每個住宅物業的層與層之間的高度 (毫米)	3/F 3 樓	2850, 2900, 3050, 3150	2850, 3050, 3150	2850, 2900, 3050, 3150	2850, 2900, 3050, 3150	2850, 2900, 3050, 3150	2850, 2900, 3050, 3150	2850, 2900, 3050, 3150	2850, 2900, 3050, 3150	2850, 2900, 3050, 3150	2850, 2900, 3050, 3150	2850, 2900, 3050, 3150
	The thickness of the floor slabs (excluding plaster) of each residential property (mm) 每個住宅物業的樓板的厚度 (不包括灰泥)(毫米)	3/F 3 樓	150, 175	150, 175	175, 200	150, 175	150, 175	150, 175	150, 175	150, 175	150, 175	150, 175	175, 200

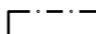
The internal areas of the residential properties on the upper floors will generally be slightly larger than those on the lower floors because of the reducing thickness of the structural walls on the upper floors. (This does not apply to the residential properties in the Phase because the design of the Phase does not involve reducing thickness of structural walls of residential properties on the upper floors and hence internal areas of those residential properties will not be increased.)

因住宅物業的較高樓層的結構牆的厚度遞減，較高樓層的內部面積，一般比較低樓層的內部面積稍大。(不適用於期數內的住宅物業，因為期數的設計是不牽涉較高樓層的住宅物業的結構牆的厚度遞減。因此，該等住宅物業的內部面積不會增加。)

Notes:

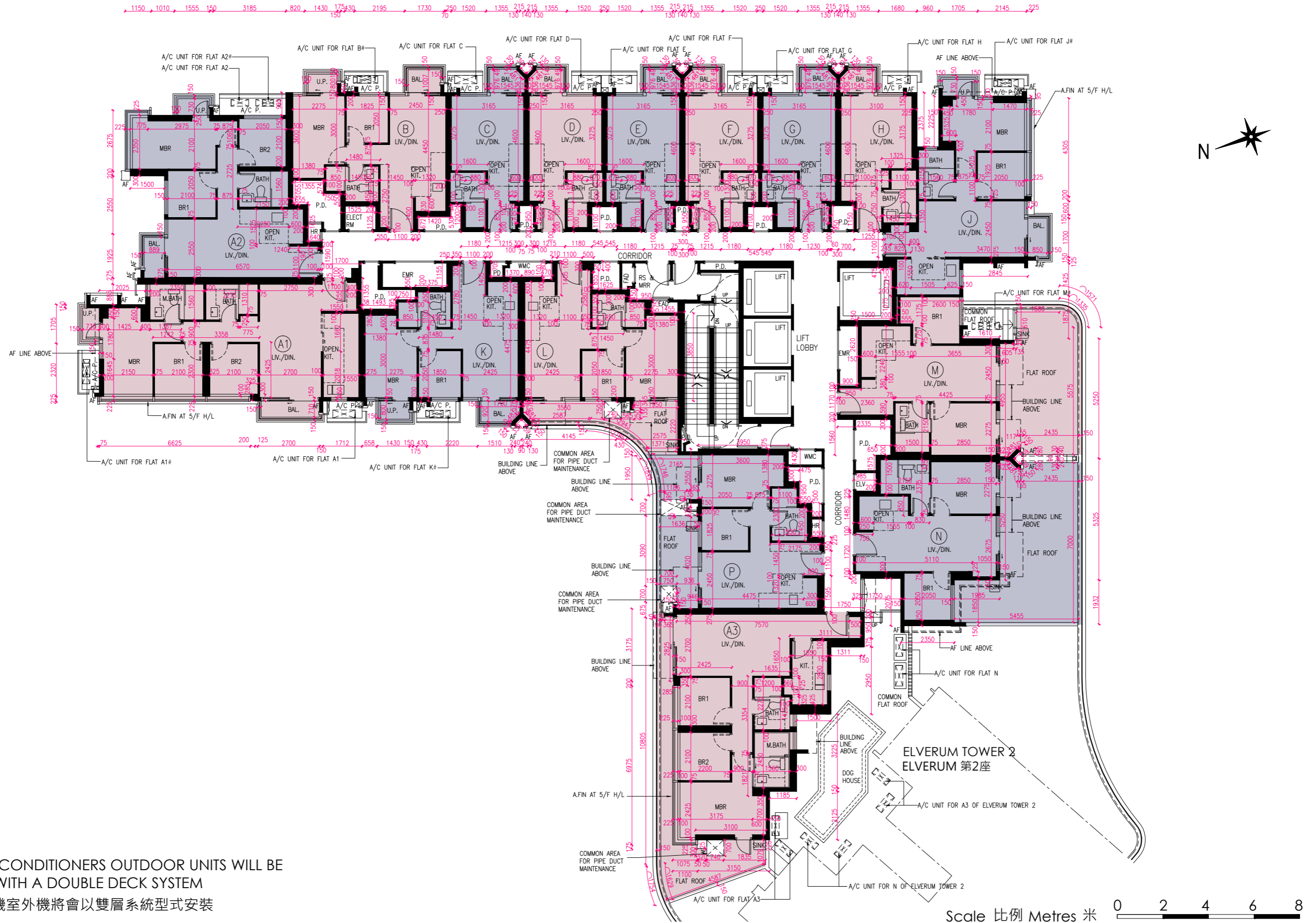
- The dimensions of floor plans are all structural dimensions in millimetre.
- Please refer to Pages AL001 to AL003 of this sales brochure for remarks, legend of the terms and abbreviations shown in the floor plan.
-  Dotted line in a residential unit with open kitchen delineates the extent of open kitchen area.

備註:

- 平面圖所列之尺寸數字為毫米標示的建築結構尺寸。
- 平面圖中顯示之附註、名詞及簡稱圖例請參閱本售樓說明書第AL001至AL003頁。
-  設有開放式廚房的住宅單位內所顯示的虛線代表開放式廚房範圍。

FLOOR PLANS OF RESIDENTIAL PROPERTIES IN THE PHASE 期數的住宅物業的樓面平面圖

ELVERUM TOWER 1 5/F | ELVERUM 第1座5樓



TWO AIR-CONDITIONERS OUTDOOR UNITS WILL BE INSTALLED WITH A DOUBLE DECK SYSTEM
 # 兩部冷氣機室外機將會以雙層系統型式安裝

Scale 比例 Metres 米 0 2 4 6 8

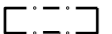
FLOOR PLANS OF RESIDENTIAL PROPERTIES IN THE PHASE 期數的住宅物業的樓面平面圖

		Floor 樓層	Flat 單位														
			A1	A2	A3	B	C	D	E	F	G	H	J	K	L	M	N
Elverum Tower 1 Elverum 第 1 座	Floor-to-floor height of each residential property (mm) 每個住宅物業的層與層之間的高度 (毫米)	5/F 5 樓	2850, 2900, 3050, 3150	2850, 3050, 3150	2850, 2900, 3050, 3150	2850, 2900, 3050, 3150	2850, 2900, 3050, 3150	2850, 2900, 3050, 3150	2850, 2900, 3050, 3150	2850, 2900, 3050, 3150	2850, 2900, 3050, 3150	2850, 2900, 3050, 3150	2850, 2900, 3050, 3150	2850, 2900, 3050, 3150	2900, 3050, 3150	2850, 3050, 3150	2850, 2900, 3050, 3150
	The thickness of the floor slabs (excluding plaster) of each residential property (mm) 每個住宅物業的樓板的厚度 (不包括灰泥)(毫米)	5/F 5 樓	150, 175, 425	150, 175	150, 175, 425	175, 200	150, 175	150, 175	150, 175	150, 175	150, 175	150, 175	150, 175, 200	175, 200	175, 200, 500	150, 175, 425	150, 175


The internal areas of the residential properties on the upper floors will generally be slightly larger than those on the lower floors because of the reducing thickness of the structural walls on the upper floors. (This does not apply to the residential properties in the Phase because the design of the Phase does not involve reducing thickness of structural walls of residential properties on the upper floors and hence internal areas of those residential properties will not be increased.)

因住宅物業的較高樓層的結構牆的厚度遞減，較高樓層的內部面積，一般比較低樓層的內部面積稍大。(不適用於期數內的住宅物業，因為期數的設計是不牽涉較高樓層的住宅物業的結構牆的厚度遞減。因此，該等住宅物業的內部面積不會增加。)

Notes:

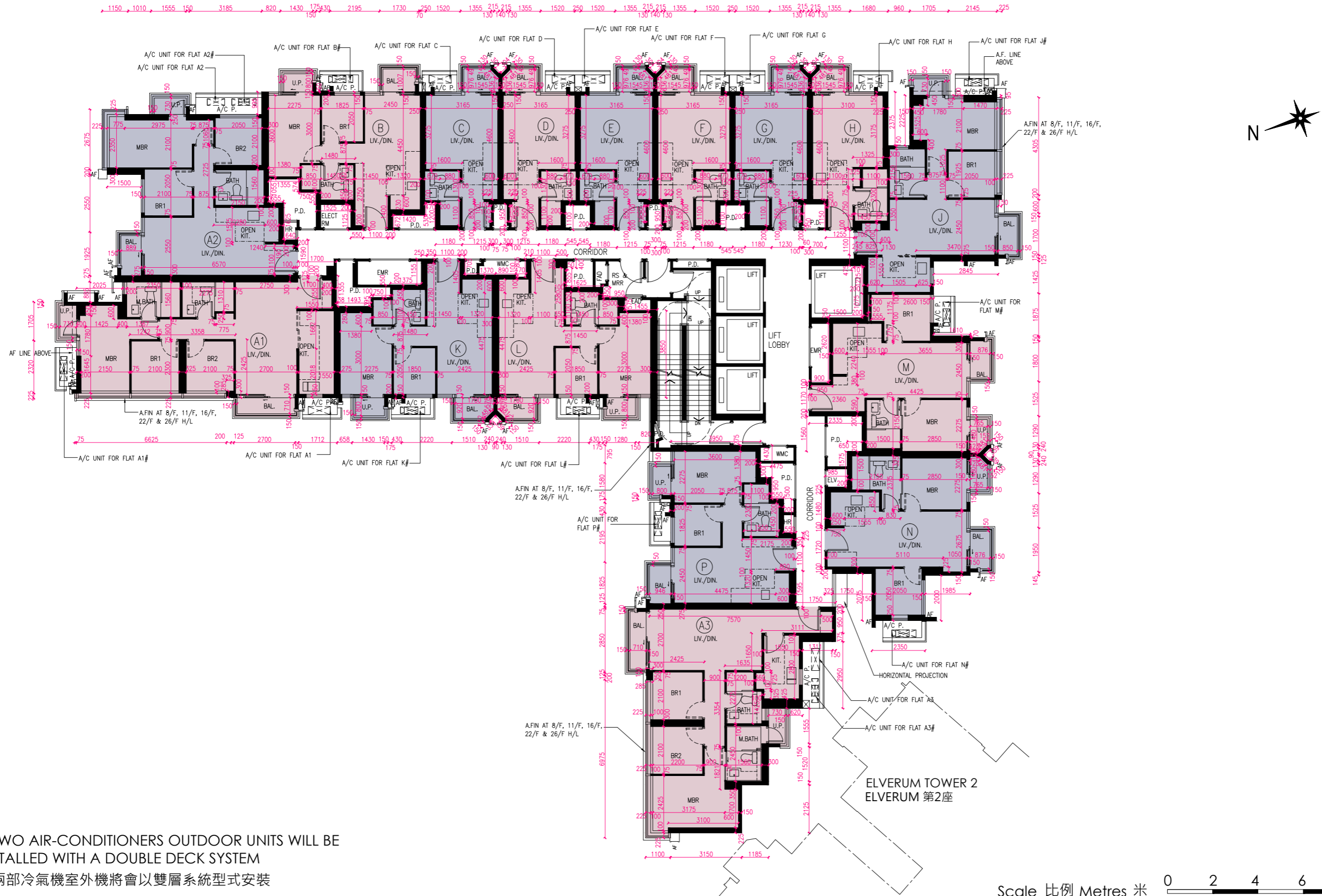
- The dimensions of floor plans are all structural dimensions in millimetre.
- Please refer to Pages AL001 to AL003 of this sales brochure for remarks, legend of the terms and abbreviations shown in the floor plan.
-  Dotted line in a residential unit with open kitchen delineates the extent of open kitchen area.

備註:

- 平面圖所列之尺寸數字為毫米標示的建築結構尺寸。
- 平面圖中顯示之附註、名詞及簡稱圖例請參閱本售樓說明書第AL001至AL003頁。
-  設有開放式廚房的住宅單位內所顯示的虛線代表開放式廚房範圍。

FLOOR PLANS OF RESIDENTIAL PROPERTIES IN THE PHASE 期數的住宅物業的樓面平面圖

ELVERUM TOWER 1 6/F-12/F, 15/F-18/F, 20/F-23/F & 25/F-28/F | ELVERUM 第1座 6樓至12樓、15樓至18樓、20樓至23樓及25樓至28樓



TWO AIR-CONDITIONERS OUTDOOR UNITS WILL BE INSTALLED WITH A DOUBLE DECK SYSTEM
 # 兩部冷氣機室外機將會以雙層系統型式安裝

Scale 比例 Metres 米 0 2 4 6 8


FLOOR PLANS OF RESIDENTIAL PROPERTIES IN THE PHASE 期數的住宅物業的樓面平面圖

		Floor 樓層	Flat 單位															
			A1	A2	A3	B	C	D	E	F	G	H	J	K	L	M	N	P
Elverum Tower 1 Elverum 第 1 座	Floor-to-floor height of each residential property (mm) 每個住宅物業的層與層之間的高度 (毫米)	6/F-12/F, 15/F-17/F, 20/F-23/F & 25/F-28/F 6 樓至 12 樓、15 樓至 17 樓、 20 樓至 23 樓及 25 樓至 28 樓	2850, 2900, 3050, 3150	2850, 3050, 3150	2850, 2900, 3050, 3150	2850, 2900, 3050, 3150	2850, 2900, 3050, 3150	2850, 2900, 3050, 3150	2850, 2900, 3050, 3150	2850, 2900, 3050, 3150	2850, 2900, 3050, 3150	2850, 2900, 3050, 3150	2850, 2900, 3050, 3150	2850, 2900, 3050, 3150	2900, 3050, 3150	2850, 3050, 3150	2850, 2900, 3050, 3150	
		18/F 18 樓	3150	3150	3150	3150	3150	3150	3150	3150	3150	3150	3150	3150	3150	3150	3150	3150
	The thickness of the floor slabs (excluding plaster) of each residential property (mm) 每個住宅物業的樓板的厚度 (不包括灰泥)(毫米)	6/F-12/F, 15/F-17/F, 20/F-23/F & 25/F-28/F 6 樓至 12 樓、15 樓至 17 樓、 20 樓至 23 樓及 25 樓至 28 樓	150, 175, 425	150, 175	150, 175, 425	175, 200	150, 175	150, 175	150, 175	150, 175	150, 175	150, 175	150, 175, 200	175, 200	175, 200, 500	150, 175, 425	150, 175	175, 425
		18/F 18 樓	150, 175	150, 175	150, 175	175, 200	150, 175	150, 175	150, 175	150, 175	150, 175	150, 175	150, 175, 200	175, 200	175, 200	150, 175	150, 175	175, 320


The internal areas of the residential properties on the upper floors will generally be slightly larger than those on the lower floors because of the reducing thickness of the structural walls on the upper floors. (This does not apply to the residential properties in the Phase because the design of the Phase does not involve reducing thickness of structural walls of residential properties on the upper floors and hence internal areas of those residential properties will not be increased.)

因住宅物業的較高樓層的結構牆的厚度遞減，較高樓層的內部面積，一般比較低樓層的內部面積稍大。(不適用於期數內的住宅物業，因為期數的設計是不牽涉較高樓層的住宅物業的結構牆的厚度遞減。因此，該等住宅物業的內部面積不會增加。)

Notes:

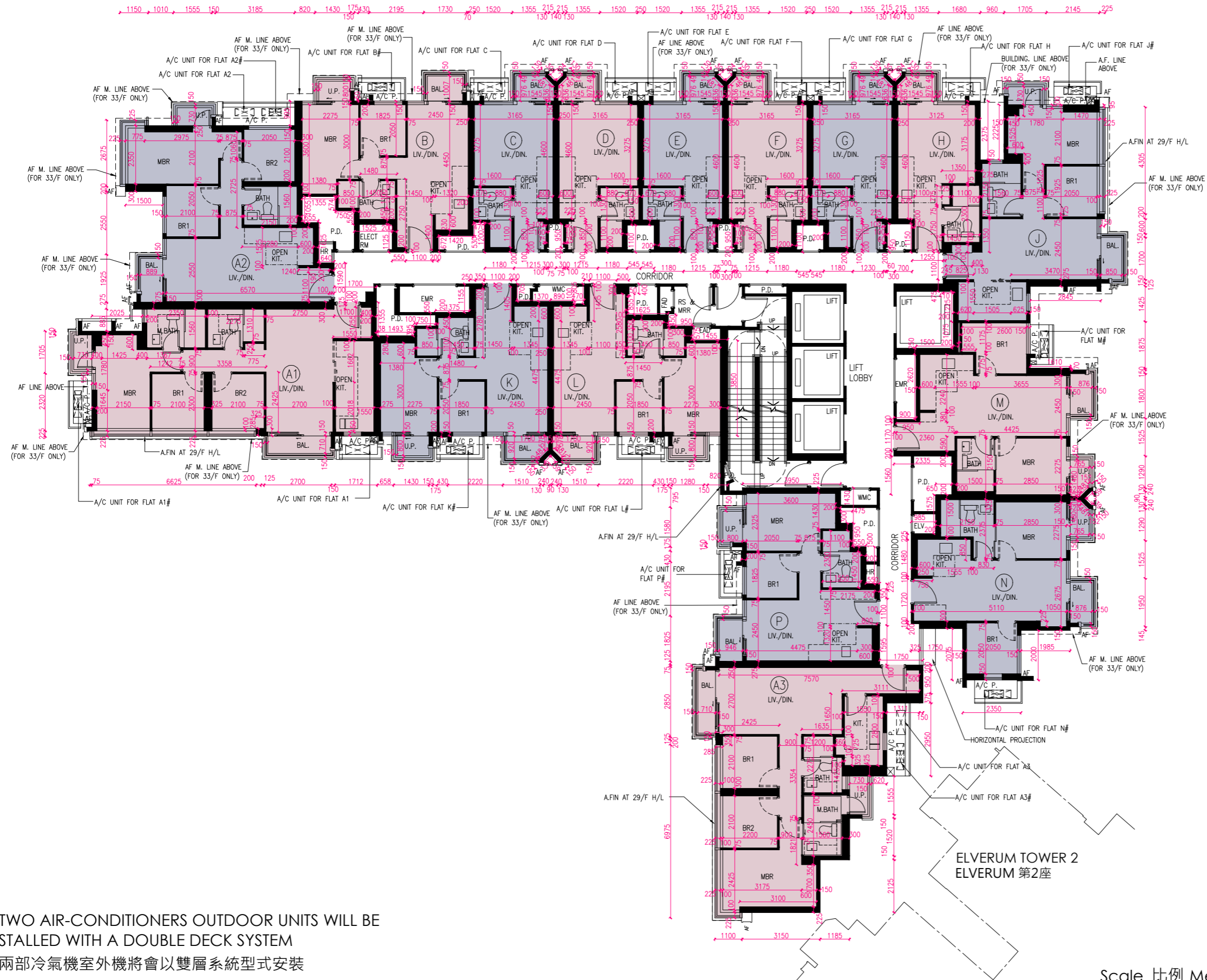
- The dimensions of floor plans are all structural dimensions in millimetre.
- Please refer to Pages AL001 to AL003 of this sales brochure for remarks, legend of the terms and abbreviations shown in the floor plan.
-  Dotted line in a residential unit with open kitchen delineates the extent of open kitchen area.

備註:

- 平面圖所列之尺寸數字為毫米標示的建築結構尺寸。
- 平面圖中顯示之附註、名詞及簡稱圖例請參閱本售樓說明書第AL001至AL003頁。
-  設有開放式廚房的住宅單位內所顯示的虛線代表開放式廚房範圍。

FLOOR PLANS OF RESIDENTIAL PROPERTIES IN THE PHASE 期數的住宅物業的樓面平面圖

ELVERUM TOWER 1 29/F-33/F | ELVERUM 第1座 29樓至33樓



TWO AIR-CONDITIONERS OUTDOOR UNITS WILL BE INSTALLED WITH A DOUBLE DECK SYSTEM
 # 兩部冷氣機室外機將會以雙層系統型式安裝

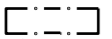
FLOOR PLANS OF RESIDENTIAL PROPERTIES IN THE PHASE 期數的住宅物業的樓面平面圖

		Floor 樓層	Flat 單位															
			A1	A2	A3	B	C	D	E	F	G	H	J	K	L	M	N	P
Elverum Tower 1 Elverum 第 1 座	Floor-to-floor height of each residential property (mm) 每個住宅物業的層與層之間的高度 (毫米)	29/F-32/F 29 樓至 32 樓	2850, 2900, 3050, 3150	2850, 3050, 3150	2850, 2900, 3050, 3150	2850, 2900, 3050, 3150	2850, 2900, 3050, 3150	2850, 2900, 3050, 3150	2850, 2900, 3050, 3150	2850, 2900, 3050, 3150	2850, 2900, 3050, 3150	2850, 2900, 3050, 3150	2850, 2900, 3050, 3150	2850, 2900, 3050, 3150	2900, 3050, 3150	2850, 3050, 3150	2850, 2900, 3050, 3150	
		33/F 33 樓	3175, 3345, 3500	3175, 3345	3200, 3250, 3395, 3400, 3500	3150, 3175, 3200, 3345, 3500	3150, 3250, 3295, 3500	3250, 3295, 3500	3150, 3395, 3500	3150, 3200, 3395, 3400, 3500	3150, 3395, 3500	3175, 3395, 3500	3150, 3175, 3345, 3395, 3500	3395, 3500	3050, 3200, 3395, 3500	3050, 3175, 3345, 3500	3050, 3175, 3345, 3400, 3500	3050, 3395, 3500
	The thickness of the floor slabs (excluding plaster) of each residential property (mm) 每個住宅物業的樓板的厚度 (不包括灰泥)(毫米)	29/F-32/F 29 樓至 32 樓	150, 175, 425	150, 175	150, 175, 425	175, 200	150, 175	150, 175	150, 175	150, 175	150, 175	150, 175	150, 175, 200	175, 200	175, 200, 500	150, 175, 425	150, 175	175, 425
		33/F 33 樓	150, 200, 225	150, 175	150, 175, 475	150, 200	150, 400	150, 400, 450	150, 500	150, 500	150, 500	150, 500	150	150, 200	150, 200	150, 200, 225	150, 175	150, 175


The internal areas of the residential properties on the upper floors will generally be slightly larger than those on the lower floors because of the reducing thickness of the structural walls on the upper floors. (This does not apply to the residential properties in the Phase because the design of the Phase does not involve reducing thickness of structural walls of residential properties on the upper floors and hence internal areas of those residential properties will not be increased.)

因住宅物業的較高樓層的結構牆的厚度遞減，較高樓層的內部面積，一般比較低樓層的內部面積稍大。(不適用於期數內的住宅物業，因為期數的設計是不牽涉較高樓層的住宅物業的結構牆的厚度遞減。因此，該等住宅物業的內部面積不會增加。)

Notes:

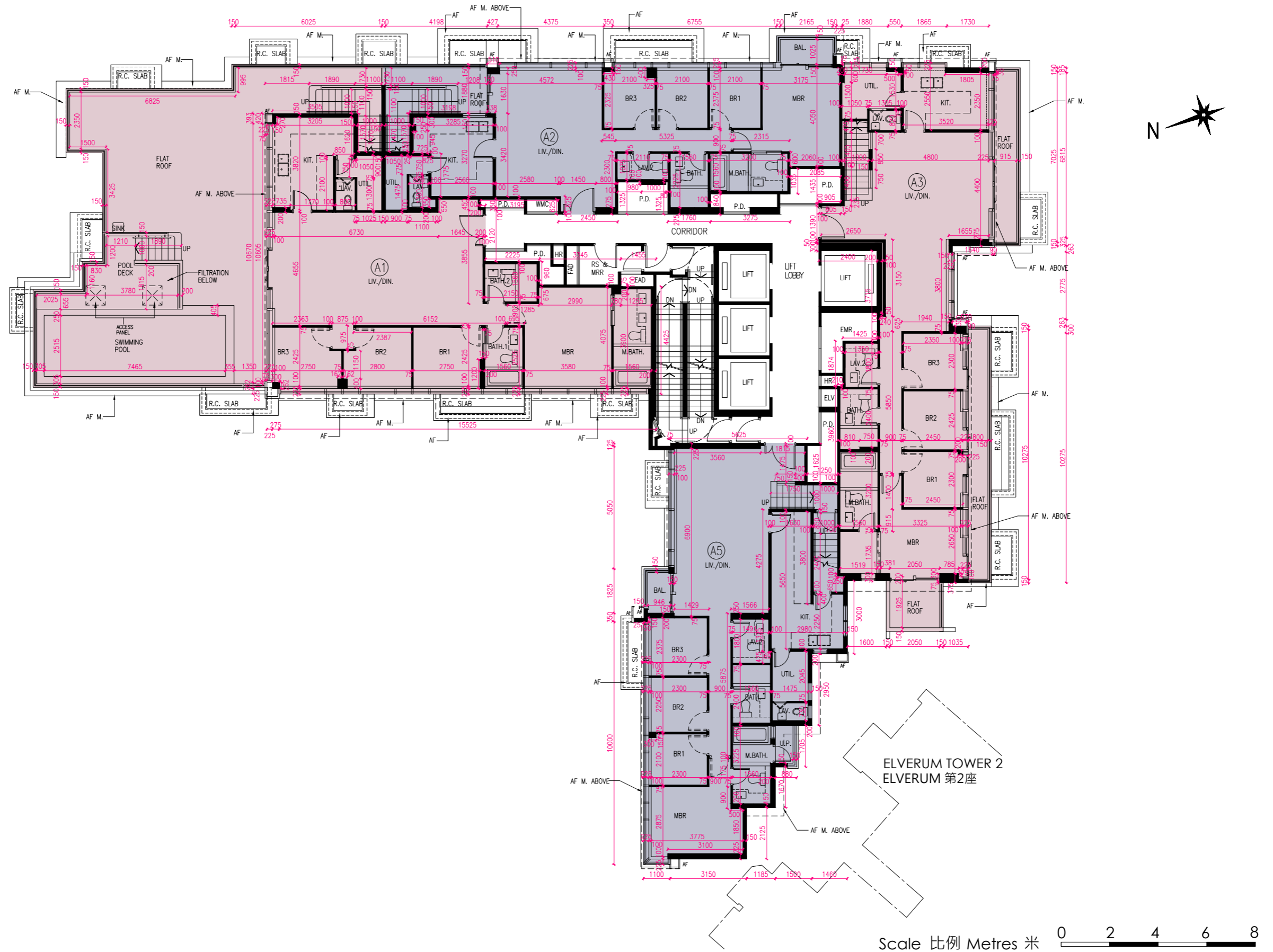
- The dimensions of floor plans are all structural dimensions in millimetre.
- Please refer to Pages AL001 to AL003 of this sales brochure for remarks, legend of the terms and abbreviations shown in the floor plan.
-  Dotted line in a residential unit with open kitchen delineates the extent of open kitchen area.

備註:

- 平面圖所列之尺寸數字為毫米標示的建築結構尺寸。
- 平面圖中顯示之附註、名詞及簡稱圖例請參閱本售樓說明書第AL001至AL003頁。
-  設有開放式廚房的住宅單位內所顯示的虛線代表開放式廚房範圍。

FLOOR PLANS OF RESIDENTIAL PROPERTIES IN THE PHASE 期數的住宅物業的樓面平面圖

ELVERUM TOWER 1 PENTHOUSE FLOOR (35/F) | ELVERUM 第1座頂層(35樓)



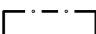
FLOOR PLANS OF RESIDENTIAL PROPERTIES IN THE PHASE 期數的住宅物業的樓面平面圖

		Floor 樓層	Flat 單位			
			A1	A2	A3	A5
Elverum Tower 1 Elverum 第 1 座	Floor-to-floor height of each residential property (mm) 每個住宅物業的層與層之間的高度 (毫米)	Penthouse Floor (35/F) 頂層 (35 樓)	3650, 3850	3650, 3850, 3875	3650, 3850	3650, 3850, 3875
	The thickness of the floor slabs (excluding plaster) of each residential property (mm) 每個住宅物業的樓板的厚度 (不包括灰泥)(毫米)	Penthouse Floor (35/F) 頂層 (35 樓)	200, 275	150, 200	200	150, 200

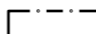
The internal areas of the residential properties on the upper floors will generally be slightly larger than those on the lower floors because of the reducing thickness of the structural walls on the upper floors. (This does not apply to the residential properties in the Phase because the design of the Phase does not involve reducing thickness of structural walls of residential properties on the upper floors and hence internal areas of those residential properties will not be increased.)

因住宅物業的較高樓層的結構牆的厚度遞減，較高樓層的內部面積，一般比較低樓層的內部面積稍大。(不適用於期數內的住宅物業，因為期數的設計是不牽涉較高樓層的住宅物業的結構牆的厚度遞減。因此，該等住宅物業的內部面積不會增加。)

Notes:

- The dimensions of floor plans are all structural dimensions in millimetre.
- Please refer to Pages AL001 to AL003 of this sales brochure for remarks, legend of the terms and abbreviations shown in the floor plan.
-  Dotted line in a residential unit with open kitchen delineates the extent of open kitchen area.

備註:

- 平面圖所列之尺寸數字為毫米標示的建築結構尺寸。
- 平面圖中顯示之附註、名詞及簡稱圖例請參閱本售樓說明書第AL001至AL003頁。
-  設有開放式廚房的住宅單位內所顯示的虛線代表開放式廚房範圍。

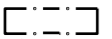
FLOOR PLANS OF RESIDENTIAL PROPERTIES IN THE PHASE 期數的住宅物業的樓面平面圖

		Floor 樓層	Flat 單位			
			A1	A2	A3	A5
Elverum Tower 1 Elverum 第 1 座	Floor-to-floor height of each residential property (mm) 每個住宅物業的層與層之間的高度 (毫米)	Roof 天台	Not Applicable 不適用	Not Applicable 不適用	Not Applicable 不適用	Not Applicable 不適用
	The thickness of the floor slabs (excluding plaster) of each residential property (mm) 每個住宅物業的樓板的厚度 (不包括灰泥)(毫米)	Roof 天台	Not Applicable 不適用	Not Applicable 不適用	Not Applicable 不適用	Not Applicable 不適用


The internal areas of the residential properties on the upper floors will generally be slightly larger than those on the lower floors because of the reducing thickness of the structural walls on the upper floors. (This does not apply to the residential properties in the Phase because the design of the Phase does not involve reducing thickness of structural walls of residential properties on the upper floors and hence internal areas of those residential properties will not be increased.)

因住宅物業的較高樓層的結構牆的厚度遞減，較高樓層的內部面積，一般比較低樓層的內部面積稍大。(不適用於期數內的住宅物業，因為期數的設計是不牽涉較高樓層的住宅物業的結構牆的厚度遞減。因此，該等住宅物業的內部面積不會增加。)

Notes:

1. The dimensions of floor plans are all structural dimensions in millimetre.
2. Please refer to Pages AL001 to AL003 of this sales brochure for remarks, legend of the terms and abbreviations shown in the floor plan.
3.  Dotted line in a residential unit with open kitchen delineates the extent of open kitchen area.

備註:

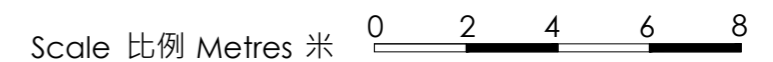
1. 平面圖所列之尺寸數字為毫米標示的建築結構尺寸。
2. 平面圖中顯示之附註、名詞及簡稱圖例請參閱本售樓說明書第AL001至AL003頁。
3.  設有開放式廚房的住宅單位內所顯示的虛線代表開放式廚房範圍。

FLOOR PLANS OF RESIDENTIAL PROPERTIES IN THE PHASE 期數的住宅物業的樓面平面圖

ELVERUM TOWER 2 GARDEN FLOOR (2/F) | ELVERUM 第2座花園層 (2樓)



TWO AIR-CONDITIONERS OUTDOOR UNITS WILL BE INSTALLED WITH A DOUBLE DECK SYSTEM
 # 兩部冷氣機室外機將會以雙層系統型式安裝



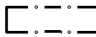
FLOOR PLANS OF RESIDENTIAL PROPERTIES IN THE PHASE 期數的住宅物業的樓面平面圖

		Floor 樓層	Flat 單位										
			A1	A2	B	C	D	E	F	G	H	J	
Elverum Tower 2 Elverum 第 2 座	Floor-to-floor height of each residential property (mm) 每個住宅物業的層與層之間的高度 (毫米)	Garden Floor (2/F) 花園層 (2 樓)	2900, 3050, 3150	2900, 3050, 3150	2900, 3050, 3150	2900, 3050, 3150	2900, 3050, 3150	2900, 3050, 3150	2900, 3150	2900, 3050, 3150	2850, 3050, 3150	2850, 3050, 3150	2900, 3050, 3150
	The thickness of the floor slabs (excluding plaster) of each residential property (mm) 每個住宅物業的樓板的厚度 (不包括灰泥)(毫米)	Garden Floor (2/F) 花園層 (2 樓)	150, 175, 200	150, 175	175, 200	175, 200	175, 200	175, 200	175, 200	175	175, 200	175, 200	150, 175

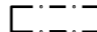
The internal areas of the residential properties on the upper floors will generally be slightly larger than those on the lower floors because of the reducing thickness of the structural walls on the upper floors. (This does not apply to the residential properties in the Phase because the design of the Phase does not involve reducing thickness of structural walls of residential properties on the upper floors and hence internal areas of those residential properties will not be increased.)

因住宅物業的較高樓層的結構牆的厚度遞減，較高樓層的內部面積，一般比較低樓層的內部面積稍大。(不適用於期數內的住宅物業，因為期數的設計是不牽涉較高樓層的住宅物業的結構牆的厚度遞減。因此，該等住宅物業的內部面積不會增加。)

Notes:

- The dimensions of floor plans are all structural dimensions in millimetre.
- Please refer to Pages AL001 to AL003 of this sales brochure for remarks, legend of the terms and abbreviations shown in the floor plan.
-  Dotted line in a residential unit with open kitchen delineates the extent of open kitchen area.

備註:

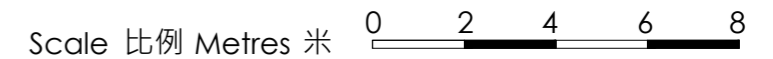
- 平面圖所列之尺寸數字為毫米標示的建築結構尺寸。
- 平面圖中顯示之附註、名詞及簡稱圖例請參閱本售樓說明書第AL001至AL003頁。
-  設有開放式廚房的住宅單位內所顯示的虛線代表開放式廚房範圍。

FLOOR PLANS OF RESIDENTIAL PROPERTIES IN THE PHASE 期數的住宅物業的樓面平面圖

ELVERUM TOWER 2 3/F | ELVERUM 第2座3樓



TWO AIR-CONDITIONERS OUTDOOR UNITS WILL BE INSTALLED WITH A DOUBLE DECK SYSTEM
 # 兩部冷氣機室外機將會以雙層系統型式安裝



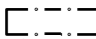
FLOOR PLANS OF RESIDENTIAL PROPERTIES IN THE PHASE 期數的住宅物業的樓面平面圖

		Floor 樓層	Flat 單位									
			A1	A2	B	C	D	E	F	G	H	J
Elverum Tower 2 Elverum 第 2 座	Floor-to-floor height of each residential property (mm) 每個住宅物業的層與層之間的高度 (毫米)	3/F 3 樓	2900, 3050, 3150	2900, 3050, 3150	2900, 3050, 3150	2900, 3050, 3150	2900, 3050, 3150	2900, 3150	2900, 3050, 3150	2850, 3050, 3150	2850, 3050, 3150	2900, 3050, 3150
	The thickness of the floor slabs (excluding plaster) of each residential property (mm) 每個住宅物業的樓板的厚度 (不包括灰泥)(毫米)	3/F 3 樓	150, 175, 200	150, 175	175, 200	175, 200	175, 200	175, 200	175	175, 200	175, 200	150, 175, 200

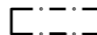
The internal areas of the residential properties on the upper floors will generally be slightly larger than those on the lower floors because of the reducing thickness of the structural walls on the upper floors. (This does not apply to the residential properties in the Phase because the design of the Phase does not involve reducing thickness of structural walls of residential properties on the upper floors and hence internal areas of those residential properties will not be increased.)

因住宅物業的較高樓層的結構牆的厚度遞減，較高樓層的內部面積，一般比較低樓層的內部面積稍大。(不適用於期數內的住宅物業，因為期數的設計是不牽涉較高樓層的住宅物業的結構牆的厚度遞減。因此，該等住宅物業的內部面積不會增加。)

Notes:

- The dimensions of floor plans are all structural dimensions in millimetre.
- Please refer to Pages AL001 to AL003 of this sales brochure for remarks, legend of the terms and abbreviations shown in the floor plan.
-  Dotted line in a residential unit with open kitchen delineates the extent of open kitchen area.

備註:

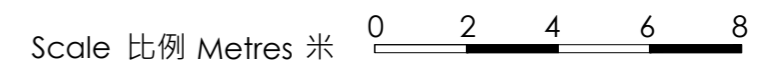
- 平面圖所列之尺寸數字為毫米標示的建築結構尺寸。
- 平面圖中顯示之附註、名詞及簡稱圖例請參閱本售樓說明書第AL001至AL003頁。
-  設有開放式廚房的住宅單位內所顯示的虛線代表開放式廚房範圍。

FLOOR PLANS OF RESIDENTIAL PROPERTIES IN THE PHASE 期數的住宅物業的樓面平面圖

ELVERUM TOWER 2 5/F | ELVERUM 第2座5樓



TWO AIR-CONDITIONERS OUTDOOR UNITS WILL BE INSTALLED WITH A DOUBLE DECK SYSTEM
 # 兩部冷氣機室外機將會以雙層系統型式安裝



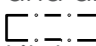
FLOOR PLANS OF RESIDENTIAL PROPERTIES IN THE PHASE 期數的住宅物業的樓面平面圖

		Floor 樓層	Flat 單位														
			A1	A2	A3	B	C	D	E	F	G	H	J	K	N	P	
Elverum Tower 2 Elverum 第 2 座	Floor-to-floor height of each residential property (mm) 每個住宅物業的層與層之間的高度 (毫米)	5/F 5 樓	2900, 3050, 3150	2900, 3050, 3150	2900, 3050, 3150	2900, 3050, 3150	2900, 3050, 3150	2900, 3050, 3150	2900, 3050, 3150	2900, 3150	2900, 3050, 3150	2850, 3050, 3150	2850, 3050, 3150	2900, 3050, 3150	2850, 2900, 3050, 3150	2900, 3050, 3150	2850, 3050, 3150
	The thickness of the floor slabs (excluding plaster) of each residential property (mm) 每個住宅物業的樓板的厚度 (不包括灰泥)(毫米)	5/F 5 樓	150, 175, 200, 425	150, 175	175, 200, 425	175, 200, 450	175, 200	175, 200	175, 200	175, 200	175	175, 200	175, 200	150, 175	150, 175	175, 200	175, 200

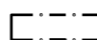
The internal areas of the residential properties on the upper floors will generally be slightly larger than those on the lower floors because of the reducing thickness of the structural walls on the upper floors. (This does not apply to the residential properties in the Phase because the design of the Phase does not involve reducing thickness of structural walls of residential properties on the upper floors and hence internal areas of those residential properties will not be increased.)

因住宅物業的較高樓層的結構牆的厚度遞減，較高樓層的內部面積，一般比較低樓層的內部面積稍大。(不適用於期數內的住宅物業，因為期數的設計是不牽涉較高樓層的住宅物業的結構牆的厚度遞減。因此，該等住宅物業的內部面積不會增加。)

Notes:

- The dimensions of floor plans are all structural dimensions in millimetre.
- Please refer to Pages AL001 to AL003 of this sales brochure for remarks, legend of the terms and abbreviations shown in the floor plan.
-  Dotted line in a residential unit with open kitchen delineates the extent of open kitchen area.

備註:

- 平面圖所列之尺寸數字為毫米標示的建築結構尺寸。
- 平面圖中顯示之附註、名詞及簡稱圖例請參閱本售樓說明書第AL001至AL003頁。
-  設有開放式廚房的住宅單位內所顯示的虛線代表開放式廚房範圍。

FLOOR PLANS OF RESIDENTIAL PROPERTIES IN THE PHASE 期數的住宅物業的樓面平面圖

ELVERUM TOWER 2 6/F-12/F, 15/F-18/F, 20/F-23/F & 25/F-28/F | ELVERUM 第2座 6樓至12樓、15樓至18樓、20樓至23樓及25樓至28樓



TWO AIR-CONDITIONERS OUTDOOR UNITS WILL BE INSTALLED WITH A DOUBLE DECK SYSTEM
 # 兩部冷氣機室外機將會以雙層系統型式安裝

Scale 比例 Metres 米 0 2 4 6 8

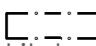
FLOOR PLANS OF RESIDENTIAL PROPERTIES IN THE PHASE 期數的住宅物業的樓面平面圖

		Floor 樓層	Flat 單位															
			A1	A2	B	C	D	E	F	G	H	J	K	L	M	N	P	
Elverum Tower 2 Elverum 第 2 座	Floor-to-floor height of each residential property (mm) 每個住宅物業的層與層之間的高度 (毫米)	6/F-12/F, 15/F-17/F, 20/F-23/F & 25/F-28/F 6 樓至 12 樓、15 樓至 17 樓、 20 樓至 23 樓及 25 樓至 28 樓	2900, 3050, 3150	2900, 3050, 3150	2900, 3050, 3150	2900, 3050, 3150	2900, 3050, 3150	2900, 3050, 3150	2900, 3050, 3150	2850, 3050, 3150	2850, 3050, 3150	2900, 3050, 3150	2850, 2900, 3050, 3150	2900, 3050, 3150	2900, 3050, 3150	2900, 3050, 3150	2850, 3050, 3150	
		18/F 18 樓	3150, 3225	3150	3150	3150	3150	3150	3150	3150	3150	3150	3150	3150	3150	3150	3150	3150
	The thickness of the floor slabs (excluding plaster) of each residential property (mm) 每個住宅物業的樓板的厚度 (不包括灰泥)(毫米)	6/F-12/F, 15/F-17/F, 20/F-23/F & 25/F-28/F 6 樓至 12 樓、15 樓至 17 樓、 20 樓至 23 樓及 25 樓至 28 樓	150, 175, 200, 425	150, 175	175, 200, 450	175, 200	175, 200	175, 200	175, 200	175	175, 200	175, 200	150, 175	150, 175	175, 425	175, 200	175, 200	175, 200
		18/F 18 樓	150, 175, 225	150, 175	175, 200	175, 200	175, 200	175, 200	175, 200	175	175, 200	175, 200	150, 175	150, 175	175	175, 200	175, 200	175, 200

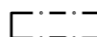
The internal areas of the residential properties on the upper floors will generally be slightly larger than those on the lower floors because of the reducing thickness of the structural walls on the upper floors. (This does not apply to the residential properties in the Phase because the design of the Phase does not involve reducing thickness of structural walls of residential properties on the upper floors and hence internal areas of those residential properties will not be increased.)

因住宅物業的較高樓層的結構牆的厚度遞減，較高樓層的內部面積，一般比較低樓層的內部面積稍大。(不適用於期數內的住宅物業，因為期數的設計是不牽涉較高樓層的住宅物業的結構牆的厚度遞減。因此，該等住宅物業的內部面積不會增加。)

Notes:

- The dimensions of floor plans are all structural dimensions in millimetre.
- Please refer to Pages AL001 to AL003 of this sales brochure for remarks, legend of the terms and abbreviations shown in the floor plan.
-  Dotted line in a residential unit with open kitchen delineates the extent of open kitchen area.

備註:

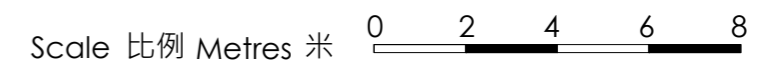
- 平面圖所列之尺寸數字為毫米標示的建築結構尺寸。
- 平面圖中顯示之附註、名詞及簡稱圖例請參閱本售樓說明書第AL001至AL003頁。
-  設有開放式廚房的住宅單位內所顯示的虛線代表開放式廚房範圍。

FLOOR PLANS OF RESIDENTIAL PROPERTIES IN THE PHASE 期數的住宅物業的樓面平面圖

ELVERUM TOWER 2 29/F - 33/F | ELVERUM 第2座 29樓至33樓



TWO AIR-CONDITIONERS OUTDOOR UNITS WILL BE INSTALLED WITH A DOUBLE DECK SYSTEM
 # 兩部冷氣機室外機將會以雙層系統型式安裝



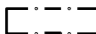
FLOOR PLANS OF RESIDENTIAL PROPERTIES IN THE PHASE 期數的住宅物業的樓面平面圖

		Floor 樓層	Flat 單位															
			A1	A2	B	C	D	E	F	G	H	J	K	L	M	N	P	
Elverum Tower 2 Elverum 第 2 座	Floor-to-floor height of each residential property (mm) 每個住宅物業的層與層之間的高度 (毫米)	29/F-32/F 29 樓至 32 樓	2900, 3050, 3150	2900, 3050, 3150	2900, 3050, 3150	2900, 3050, 3150	2900, 3050, 3150	2900, 3150	2900, 3050, 3150	2850, 3050, 3150	2850, 3050, 3150	2900, 3050, 3150	2850, 2900, 3050, 3150	2900, 3050, 3150	2900, 3050, 3150	2900, 3050, 3150	2850, 3050, 3150	
		33/F 33 樓	3175, 3345, 3500	3150, 3175, 3250, 3295, 3345, 3500	3250, 3395, 3500	3150, 3395, 3500	3200, 3335, 3345, 3395, 3400, 3500	3150, 3250, 3395, 3400, 3500	3175, 3395, 3500	3395, 3500	3050, 3150, 3175, 3395, 3400, 3500	3150, 3250, 3395, 3400, 3500	3395, 3500	3175, 3250, 3345, 3500	3175, 3345, 3500	3150, 3395, 3500	3200, 3395, 3500	
	The thickness of the floor slabs (excluding plaster) of each residential property (mm) 每個住宅物業的樓板的厚度 (不包括灰泥)(毫米)	29/F-32/F 29 樓至 32 樓	150, 175, 200, 425	150, 175	175, 200, 450	175, 200	175, 200	175, 200	175, 200	175	175, 200	175, 200	150, 175	150, 175	175, 425	175, 200	175, 200	175, 200
		33/F 33 樓	150, 200	150	150, 200	150, 200	150, 200	150, 225	150, 175	150, 200	150, 200	150, 175	150	150, 175	150, 200	150, 200	150, 200	

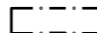
The internal areas of the residential properties on the upper floors will generally be slightly larger than those on the lower floors because of the reducing thickness of the structural walls on the upper floors. (This does not apply to the residential properties in the Phase because the design of the Phase does not involve reducing thickness of structural walls of residential properties on the upper floors and hence internal areas of those residential properties will not be increased.)

因住宅物業的較高樓層的結構牆的厚度遞減，較高樓層的內部面積，一般比較低樓層的內部面積稍大。(不適用於期數內的住宅物業，因為期數的設計是不牽涉較高樓層的住宅物業的結構牆的厚度遞減。因此，該等住宅物業的內部面積不會增加。)

Notes:

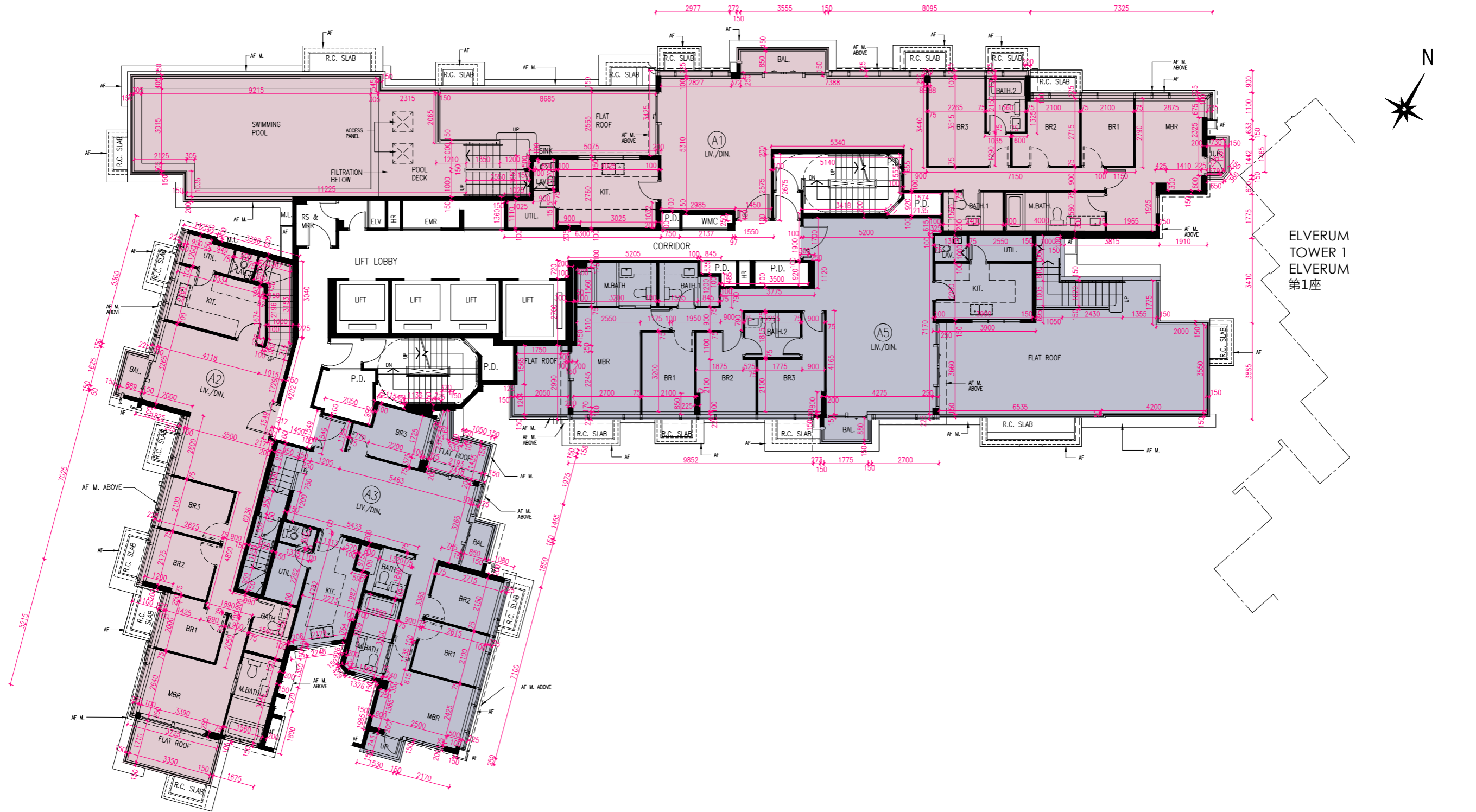
- The dimensions of floor plans are all structural dimensions in millimetre.
- Please refer to Pages AL001 to AL003 of this sales brochure for remarks, legend of the terms and abbreviations shown in the floor plan.
-  Dotted line in a residential unit with open kitchen delineates the extent of open kitchen area.

備註:

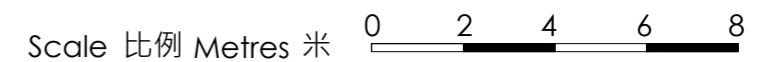
- 平面圖所列之尺寸數字為毫米標示的建築結構尺寸。
- 平面圖中顯示之附註、名詞及簡稱圖例請參閱本售樓說明書第AL001至AL003頁。
-  設有開放式廚房的住宅單位內所顯示的虛線代表開放式廚房範圍。

FLOOR PLANS OF RESIDENTIAL PROPERTIES IN THE PHASE 期數的住宅物業的樓面平面圖

ELVERUM TOWER 2 PENTHOUSE FLOOR (35/F) | ELVERUM 第2座頂層 (35樓)



ELVERUM TOWER 1
ELVERUM 第1座



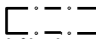
FLOOR PLANS OF RESIDENTIAL PROPERTIES IN THE PHASE 期數的住宅物業的樓面平面圖

		Floor 樓層	Flat 單位			
			A1	A2	A3	A5
Elverum Tower 2 Elverum 第 2 座	Floor-to-floor height of each residential property (mm) 每個住宅物業的層與層之間的高度 (毫米)	Penthouse Floor (35/F) 頂層 (35 樓)	2650, 3650, 3850, 3875	3650, 3875	3650, 3850, 3875	3650, 3850, 3875
	The thickness of the floor slabs (excluding plaster) of each residential property (mm) 每個住宅物業的樓板的厚度 (不包括灰泥)(毫米)	Penthouse Floor (35/F) 頂層 (35 樓)	150, 200	150, 200	150, 200, 400	150, 200, 400

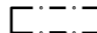
The internal areas of the residential properties on the upper floors will generally be slightly larger than those on the lower floors because of the reducing thickness of the structural walls on the upper floors. (This does not apply to the residential properties in the Phase because the design of the Phase does not involve reducing thickness of structural walls of residential properties on the upper floors and hence internal areas of those residential properties will not be increased.)

因住宅物業的較高樓層的結構牆的厚度遞減，較高樓層的內部面積，一般比較低樓層的內部面積稍大。（不適用於期數內的住宅物業，因為期數的設計是不牽涉較高樓層的住宅物業的結構牆的厚度遞減。因此，該等住宅物業的內部面積不會增加。）

Notes:

- The dimensions of floor plans are all structural dimensions in millimetre.
- Please refer to Pages AL001 to AL003 of this sales brochure for remarks, legend of the terms and abbreviations shown in the floor plan.
-  Dotted line in a residential unit with open kitchen delineates the extent of open kitchen area.

備註:

- 平面圖所列之尺寸數字為毫米標示的建築結構尺寸。
- 平面圖中顯示之附註、名詞及簡稱圖例請參閱本售樓說明書第AL001至AL003頁。
-  設有開放式廚房的住宅單位內所顯示的虛線代表開放式廚房範圍。

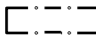
FLOOR PLANS OF RESIDENTIAL PROPERTIES IN THE PHASE 期數的住宅物業的樓面平面圖

		Floor 樓層	Flat 單位			
			A1	A2	A3	A5
Elverum Tower 2 Elverum 第 2 座	Floor-to-floor height of each residential property (mm) 每個住宅物業的層與層之間的高度 (毫米)	Roof 天台	Not Applicable 不適用	Not Applicable 不適用	Not Applicable 不適用	Not Applicable 不適用
	The thickness of the floor slabs (excluding plaster) of each residential property (mm) 每個住宅物業的樓板的厚度 (不包括灰泥)(毫米)	Roof 天台	Not Applicable 不適用	Not Applicable 不適用	Not Applicable 不適用	Not Applicable 不適用

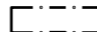
The internal areas of the residential properties on the upper floors will generally be slightly larger than those on the lower floors because of the reducing thickness of the structural walls on the upper floors. (This does not apply to the residential properties in the Phase because the design of the Phase does not involve reducing thickness of structural walls of residential properties on the upper floors and hence internal areas of those residential properties will not be increased.)

因住宅物業的較高樓層的結構牆的厚度遞減，較高樓層的內部面積，一般比較低樓層的內部面積稍大。(不適用於期數內的住宅物業，因為期數的設計是不牽涉較高樓層的住宅物業的結構牆的厚度遞減。因此，該等住宅物業的內部面積不會增加。)

Notes:

- The dimensions of floor plans are all structural dimensions in millimetre.
- Please refer to Pages AL001 to AL003 of this sales brochure for remarks, legend of the terms and abbreviations shown in the floor plan.
-  Dotted line in a residential unit with open kitchen delineates the extent of open kitchen area.

備註:

- 平面圖所列之尺寸數字為毫米標示的建築結構尺寸。
- 平面圖中顯示之附註、名詞及簡稱圖例請參閱本售樓說明書第AL001至AL003頁。
-  設有開放式廚房的住宅單位內所顯示的虛線代表開放式廚房範圍。