

10 FLOOR PLANS OF RESIDENTIAL PROPERTIES IN THE DEVELOPMENT

發展項目的住宅物業的樓面平面圖

The notes and legends on this page apply to all pages of "Floor plans of residential properties in the Development".
本頁上之備註和圖例適用於全部的「發展項目的住宅物業的樓面平面圖」頁數。

LEGEND FOR FLOOR PLAN 平面圖圖例

AC PLATFORM	= AIR CONDITIONER PLATFORM	= 空調機平台
ARCH. FEATURE	= ARCHITECTURAL FEATURE	= 建築裝飾
ARCH. FEATURE AT 20/F, 22/F ONLY	= ARCHITECTURAL FEATURE AT 20/F, 22/F	= 建築裝飾只於20樓、22樓
BAL	= BALCONY	= 露台
BATH	= BATHROOM	= 浴室
BED ROOM	= BEDROOM	= 睡房
DN	= DOWN	= 落
E.D.	= ELECTRICAL DUCT	= 電線槽
H.R	= HOSE REEL	= 消防喉轆
LIV./ DIN.	= LIVING ROOM AND DINING ROOM	= 客廳及飯廳
M. BED ROOM	= MASTER BEDROOM	= 主人睡房
OPEN KIT.	= OPEN KITCHEN	= 開放式廚房
OUTLINE OF AC PLATFORM ABOVE	= OUTLINE OF AIR CONDITIONER PLATFORM ABOVE	= 上層空調機平台輪廓線
OUTLINE OF BAL. ABOVE	= OUTLINE OF BALCONY ABOVE	= 上層露台輪廓線
P.D.	= PIPE DUCT	= 管道槽
TEL.D.	= TELEPHONE DUCT	= 電話槽
TOP OF BAL.	= TOP OF BALCONY	= 露台上蓋
TOP OF BAL. AT 20/F ONLY	= TOP OF BALCONY AT 20/F ONLY	= 露台上蓋只於20樓
W.M.C.	= WATER METER CABINET	= 水錶櫃

Notes applicable to the floor plans of this section:

1. Exposed common pipes are located at / adjacent to the balcony and / or flat roof and / or air conditioner platform and / or external wall of some residential properties. For details, please refer to the latest approved building plans and / or approved drainage plans.
2. There may be sunken slabs and / or bulkheads and / or false ceilings for the installation of mechanical and electrical services at some of the residential properties.
3. The dimensions on the floor plans are all structural dimensions in millimeter.
4. The indications of fittings such as windows, door leafs, kitchen cabinets, drain points, shower cubicles and the door leafs thereof, sinks, water closets, wash basins etc. shown on the floor plans are indications of their approximate locations only and not indications of their actual sizes, locations, designs and shapes.
5. Balconies and flat roofs are non-enclosed areas.

適用於本節各樓面平面圖之備註：

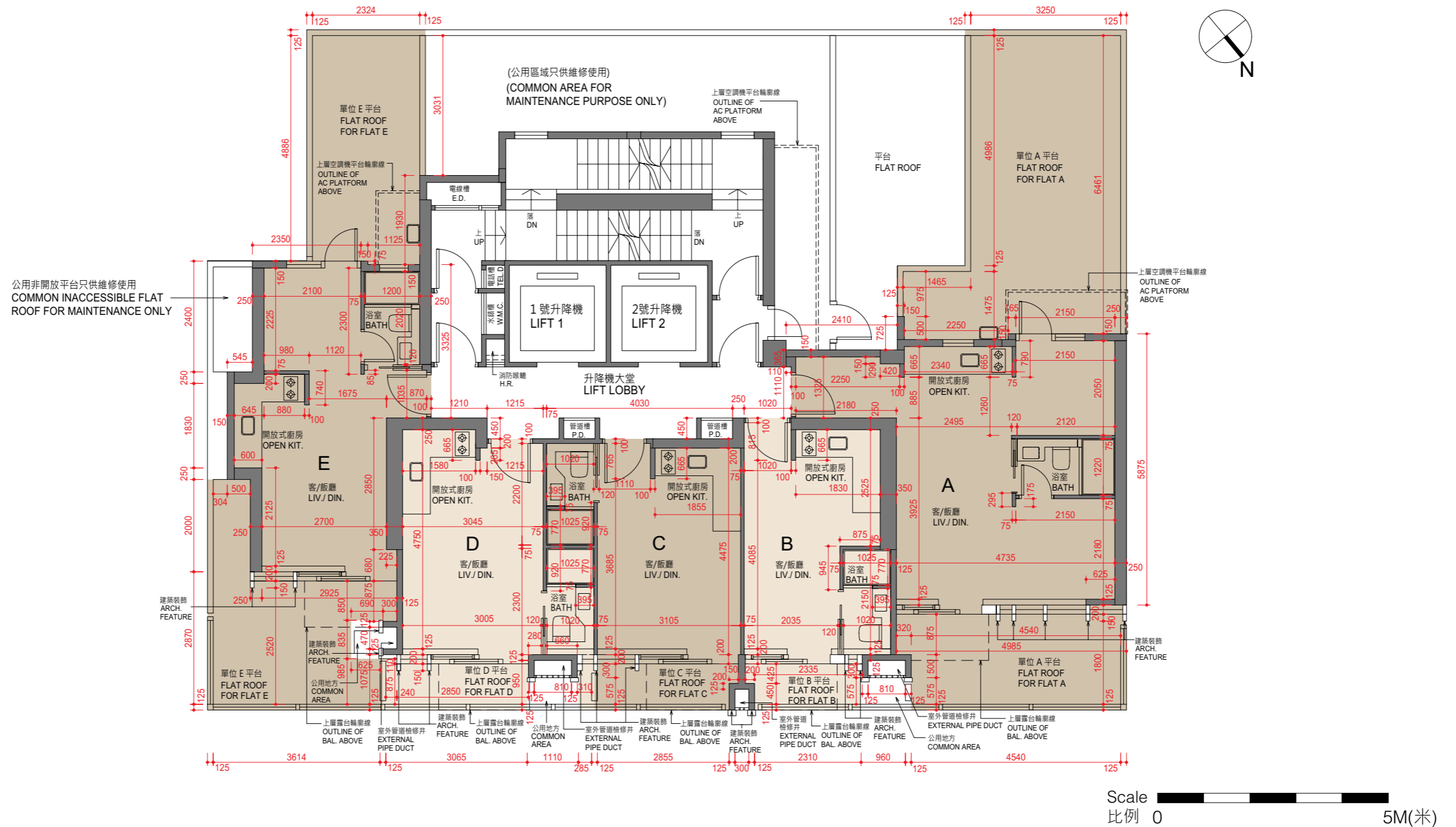
1. 部份住宅物業的露台及 / 或平台及 / 或空調機平台及 / 或外牆上 / 附近設有外露公用喉管。請查閱最新之批准建築圖則及 / 或批准排水圖則以了解詳情。
2. 部份住宅物業有跌級樓板及 / 或裝飾橫樑及 / 或假天花，以安裝機電設備。
3. 樓面平面圖所列之尺寸為以毫米標示之建築結構尺寸。
4. 樓面平面圖所示之裝置如窗、門葉、廚櫃、去水位、淋浴間及其門葉、洗滌盆、座廁、面盆等只供展示其大約位置而非展示其實際大小、位置、設計及形狀。
5. 露台及平台為不可封閉的地方。

10 FLOOR PLANS OF RESIDENTIAL PROPERTIES IN THE DEVELOPMENT

發展項目的住宅物業的樓面平面圖

5/F FLOOR PLAN

5樓樓面平面圖



Blank areas on the flat roof are common areas for building facility maintenance.

平台空白位置為供維修大廈設備使用的公用地方。

Notes:

1. The dimensions of floor plans are all structural dimensions in millimeter.
2. 3/F, 4/F, 13/F, 14/F and 24/F are omitted.

備註:

1. 平面圖所列之數字為以毫米標示之建築結構尺寸。
2. 不設3樓、4樓、13樓、14樓及24樓。

10 FLOOR PLANS OF RESIDENTIAL PROPERTIES IN THE DEVELOPMENT

發展項目的住宅物業的樓面平面圖

5/F 5樓	Flat 單位				
	A	B	C	D	E
Thickness of Floor Slabs (excluding plaster) of each residential property (mm) 每個住宅物業的樓板(不包括灰泥)的厚度(毫米)	150	150	150	150	150
Floor-to-Floor Height (note: refers to the height between the top surface of the structural slab of a floor and the top surface of the structural slab of its immediate upper floor) of each residential property (mm) 每個住宅物業的層與層之間的高度(註：指該樓層之石屎地台面與上一層石屎地台面之高度距離)(毫米)	2975, 3325, 3375, 3400, 3725	2975, 3325, 3375, 3400, 3725	2975, 3325, 3375, 3400, 3725	2975, 3325, 3375, 3400, 3725	2975, 3325, 3375, 3400, 3525, 3725, 3875

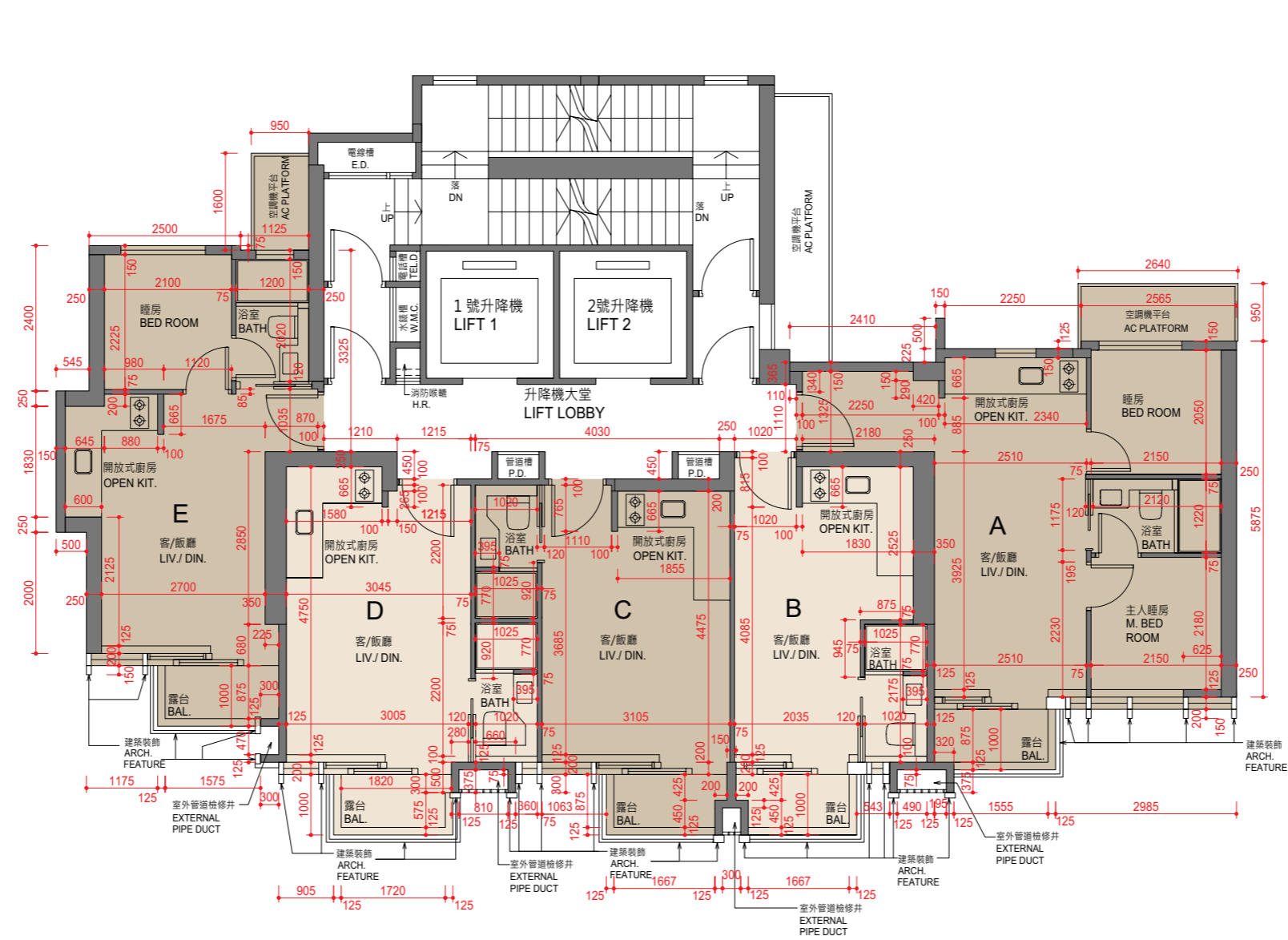
The internal areas of the residential properties on the upper floors will generally be slightly larger than those on the lower floors because of the reducing thickness of the structural walls on the upper floors.

因住宅物業的較高樓層的結構牆的厚度遞減，較高樓層的內部面積，一般比較低樓層的內部面積稍大。

10 FLOOR PLANS OF RESIDENTIAL PROPERTIES IN THE DEVELOPMENT

發展項目的住宅物業的樓面平面圖

6/F - 12/F FLOOR PLAN 6樓至12樓樓面平面圖



Scale 0 5M(米)
比例 0 5M(米)

Notes:

1. The dimensions of floor plans are all structural dimensions in millimeter.
2. 3/F, 4/F, 13/F, 14/F and 24/F are omitted.

備註：

1. 平面圖所列之數字為以毫米標示之建築結構尺寸。
2. 不設3樓、4樓、13樓、14樓及24樓。

10 FLOOR PLANS OF RESIDENTIAL PROPERTIES IN THE DEVELOPMENT

發展項目的住宅物業的樓面平面圖

6/F - 11/F 6樓至11樓	Flat 單位				
	A	B	C	D	E
Thickness of Floor Slabs (excluding plaster) of each residential property (mm) 每個住宅物業的樓板(不包括灰泥)的厚度(毫米)	150	150	150	150	150
Floor-to-Floor Height (note: refers to the height between the top surface of the structural slab of a floor and the top surface of the structural slab of its immediate upper floor) of each residential property (mm) 每個住宅物業的層與層之間的高度(註:指該樓層之石屎地台面與上一層石屎地台面之高度距離)(毫米)	3325	3325	3325	3325	3325

12/F 12樓	Flat 單位				
	A	B	C	D	E
Thickness of Floor Slabs (excluding plaster) of each residential property (mm) 每個住宅物業的樓板(不包括灰泥)的厚度(毫米)	150	150	150	150	150
Floor-to-Floor Height (note: refers to the height between the top surface of the structural slab of a floor and the top surface of the structural slab of its immediate upper floor) of each residential property (mm) 每個住宅物業的層與層之間的高度(註:指該樓層之石屎地台面與上一層石屎地台面之高度距離)(毫米)	3325, 3675	3325	3325	3325	3325

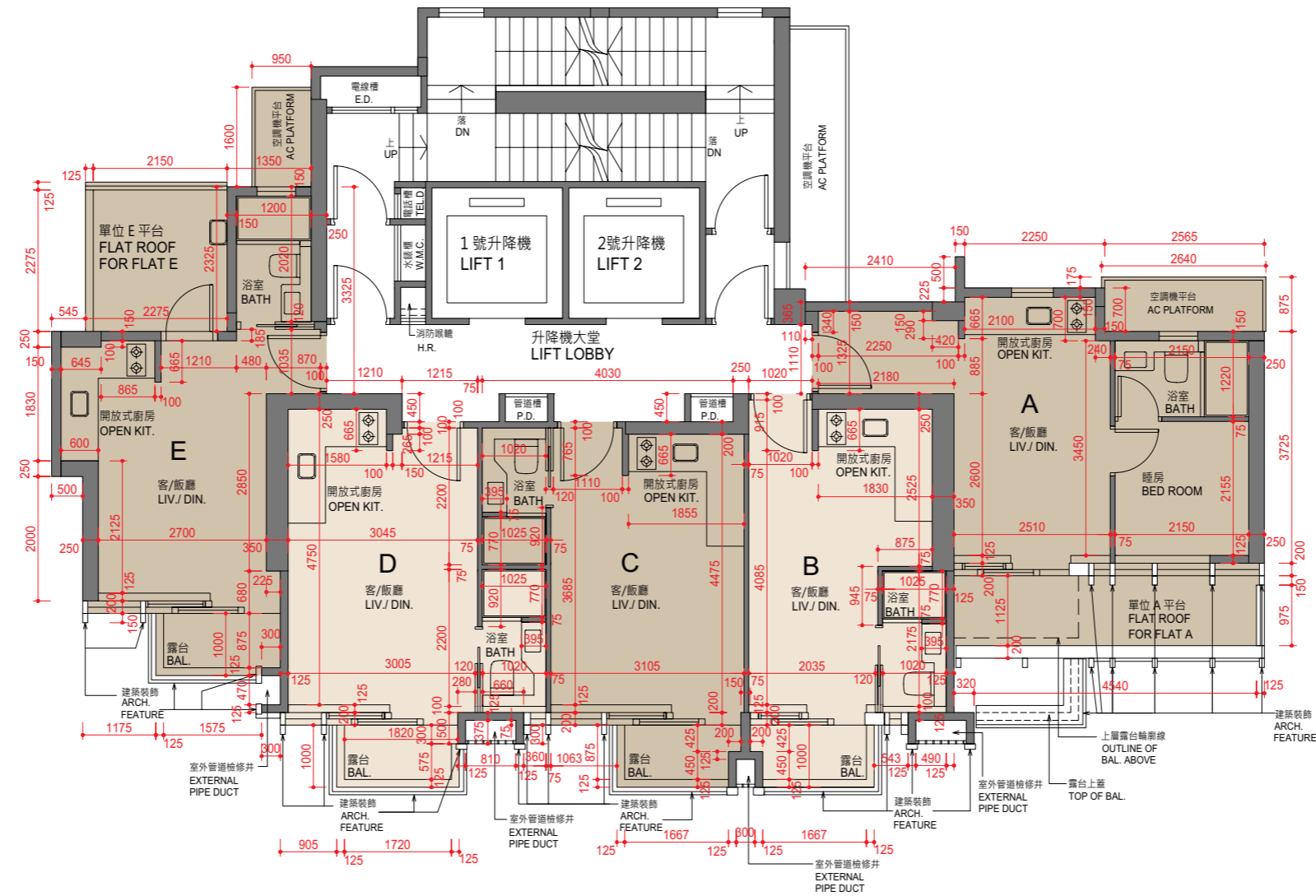
The internal areas of the residential properties on the upper floors will generally be slightly larger than those on the lower floors because of the reducing thickness of the structural walls on the upper floors.

因住宅物業的較高樓層的結構牆的厚度遞減，較高樓層的內部面積，一般比較低樓層的內部面積稍大。

10 FLOOR PLANS OF RESIDENTIAL PROPERTIES IN THE DEVELOPMENT

發展項目的住宅物業的樓面平面圖

15/F FLOOR PLAN 15樓樓面平面圖



Scale 0 5M(米)
比例 0 5M(米)

Notes:

1. The dimensions of floor plans are all structural dimensions in millimeter.
2. 3/F, 4/F, 13/F, 14/F and 24/F are omitted.

備註：

1. 平面圖所列之數字為以毫米標示之建築結構尺寸。
2. 不設3樓、4樓、13樓、14樓及24樓。

10 FLOOR PLANS OF RESIDENTIAL PROPERTIES IN THE DEVELOPMENT

發展項目的住宅物業的樓面平面圖

15/F 15樓	Flat 單位				
	A	B	C	D	E
Thickness of Floor Slabs (excluding plaster) of each residential property (mm) 每個住宅物業的樓板(不包括灰泥)的厚度(毫米)	150	150	150	150	150
Floor-to-Floor Height (note: refers to the height between the top surface of the structural slab of a floor and the top surface of the structural slab of its immediate upper floor) of each residential property (mm) 每個住宅物業的層與層之間的高度(註：指該樓層之石屎地台面與上一層石屎地台面之高度距離)(毫米)	2975, 3325, 3675	3325	3325	3325	3325

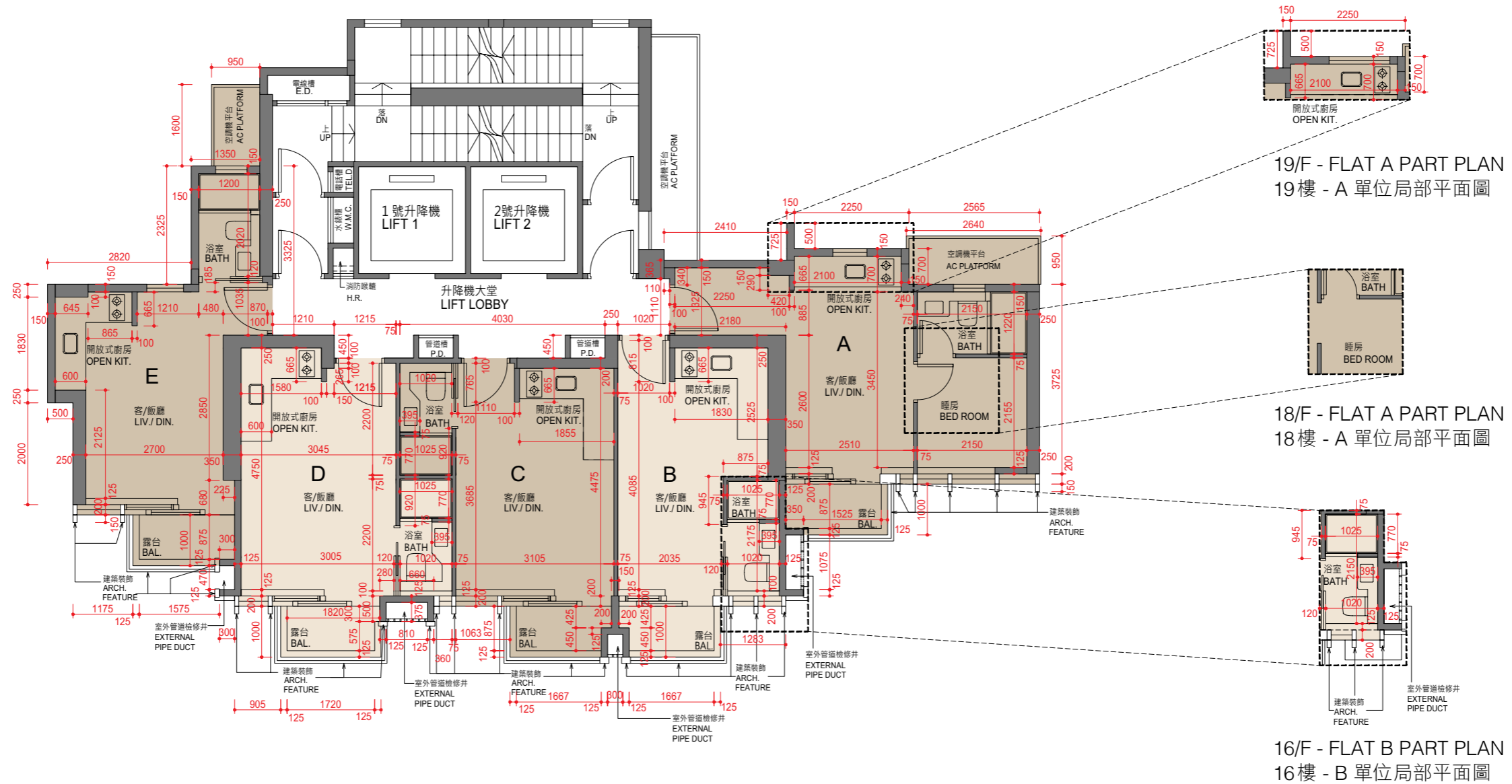
The internal areas of the residential properties on the upper floors will generally be slightly larger than those on the lower floors because of the reducing thickness of the structural walls on the upper floors.

因住宅物業的較高樓層的結構牆的厚度遞減，較高樓層的內部面積，一般比較低樓層的內部面積稍大。

10 FLOOR PLANS OF RESIDENTIAL PROPERTIES IN THE DEVELOPMENT

發展項目的住宅物業的樓面平面圖

16/F - 19/F FLOOR PLAN 16樓至19樓樓面平面圖



Scale 0 5M(米)
比例 0 5M(米)

Notes:

1. The dimensions of floor plans are all structural dimensions in millimeter.
2. 3/F, 4/F, 13/F, 14/F and 24/F are omitted.

備註:

1. 平面圖所列之數字為以毫米標示之建築結構尺寸。
2. 不設3樓、4樓、13樓、14樓及24樓。

10 FLOOR PLANS OF RESIDENTIAL PROPERTIES IN THE DEVELOPMENT

發展項目的住宅物業的樓面平面圖

16/F - 18/F 16樓至18樓	Flat 單位				
	A	B	C	D	E
Thickness of Floor Slabs (excluding plaster) of each residential property (mm) 每個住宅物業的樓板(不包括灰泥)的厚度(毫米)	150	150	150	150	150
Floor-to-Floor Height (note: refers to the height between the top surface of the structural slab of a floor and the top surface of the structural slab of its immediate upper floor) of each residential property (mm) 每個住宅物業的層與層之間的高度(註:指該樓層之石屎地台面與上一層石屎地台面之高度距離)(毫米)	3325	3325	3325	3325	3325

19/F 19樓	Flat 單位				
	A	B	C	D	E
Thickness of Floor Slabs (excluding plaster) of each residential property (mm) 每個住宅物業的樓板(不包括灰泥)的厚度(毫米)	150	150	150	150	150
Floor-to-Floor Height (note: refers to the height between the top surface of the structural slab of a floor and the top surface of the structural slab of its immediate upper floor) of each residential property (mm) 每個住宅物業的層與層之間的高度(註:指該樓層之石屎地台面與上一層石屎地台面之高度距離)(毫米)	3325	2975, 3325, 3675	2975, 3325, 3675	3325, 3675	3325

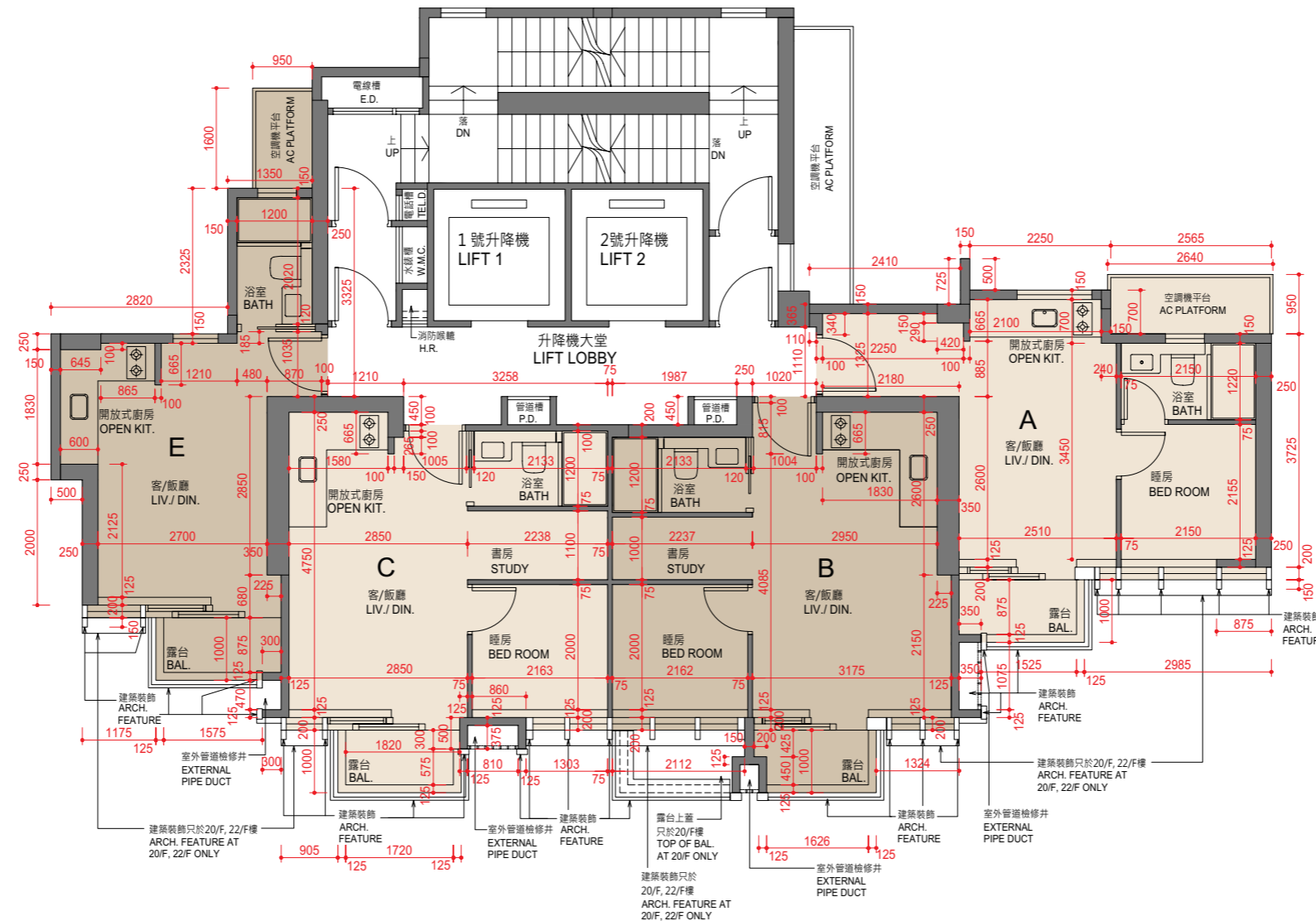
The internal areas of the residential properties on the upper floors will generally be slightly larger than those on the lower floors because of the reducing thickness of the structural walls on the upper floors.

因住宅物業的較高樓層的結構牆的厚度遞減，較高樓層的內部面積，一般比較低樓層的內部面積稍大。

10 FLOOR PLANS OF RESIDENTIAL PROPERTIES IN THE DEVELOPMENT

發展項目的住宅物業的樓面平面圖

20/F - 23/F FLOOR PLAN
20樓至23樓樓面平面圖



Scale 0 5M(米)
比例 0 5M(米)

- Notes:
1. The dimensions of floor plans are all structural dimensions in millimeter.
 2. 3/F, 4/F, 13/F, 14/F and 24/F are omitted.

- 備註：
1. 平面圖所列之數字為以毫米標示之建築結構尺寸。
 2. 不設3樓、4樓、13樓、14樓及24樓。

10 FLOOR PLANS OF RESIDENTIAL PROPERTIES IN THE DEVELOPMENT

發展項目的住宅物業的樓面平面圖

20/F - 22/F 20樓至22樓	Flat 單位			
	A	B	C	E
Thickness of Floor Slabs (excluding plaster) of each residential property (mm) 每個住宅物業的樓板(不包括灰泥)的厚度(毫米)	150	150	150	150
Floor-to-Floor Height (note: refers to the height between the top surface of the structural slab of a floor and the top surface of the structural slab of its immediate upper floor) of each residential property (mm) 每個住宅物業的層與層之間的高度(註:指該樓層之石屎地台面與上一層石屎地台面之高度距離)(毫米)	3325	3325	3325	3325

23/F 23樓	Flat 單位			
	A	B	C	E
Thickness of Floor Slabs (excluding plaster) of each residential property (mm) 每個住宅物業的樓板(不包括灰泥)的厚度(毫米)	150	150	150	150
Floor-to-Floor Height (note: refers to the height between the top surface of the structural slab of a floor and the top surface of the structural slab of its immediate upper floor) of each residential property (mm) 每個住宅物業的層與層之間的高度(註:指該樓層之石屎地台面與上一層石屎地台面之高度距離)(毫米)	3325, 3675	2975, 3325, 3675	2975, 3325, 3675	3325, 3675

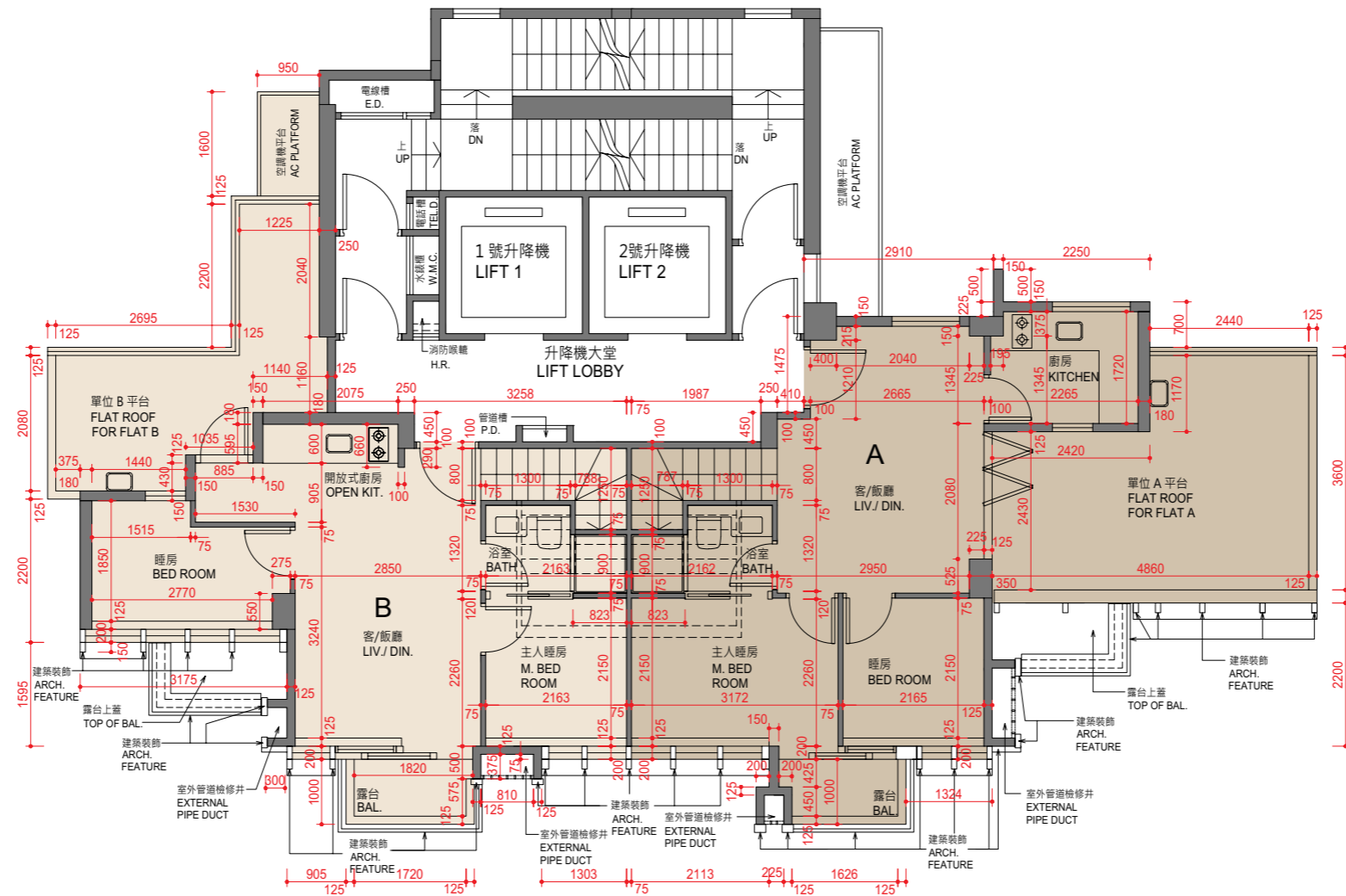
The internal areas of the residential properties on the upper floors will generally be slightly larger than those on the lower floors because of the reducing thickness of the structural walls on the upper floors.

因住宅物業的較高樓層的結構牆的厚度遞減，較高樓層的內部面積，一般比較低樓層的內部面積稍大。

10 FLOOR PLANS OF RESIDENTIAL PROPERTIES IN THE DEVELOPMENT

發展項目的住宅物業的樓面平面圖

25/F FLOOR PLAN 25樓樓面平面圖



Scale 0 5M(米)
比例 0 5M(米)

- Notes:
1. The dimensions of floor plans are all structural dimensions in millimeter.
 2. 3/F, 4/F, 13/F, 14/F and 24/F are omitted.

- 備註：
1. 平面圖所列之數字為以毫米標示之建築結構尺寸。
 2. 不設3樓、4樓、13樓、14樓及24樓。

10 FLOOR PLANS OF RESIDENTIAL PROPERTIES IN THE DEVELOPMENT

發展項目的住宅物業的樓面平面圖

25/F 25樓	Flat 單位	
	A	B
Thickness of Floor Slabs (excluding plaster) of each residential property (mm) 每個住宅物業的樓板(不包括灰泥)的厚度(毫米)	150, 175	150, 175
Floor-to-Floor Height (note: refers to the height between the top surface of the structural slab of a floor and the top surface of the structural slab of its immediate upper floor) of each residential property (mm) 每個住宅物業的層與層之間的高度(註：指該樓層之石屎地台面與上一層石屎地台面之高度距離)(毫米)	3875, 4225	3875, 4225

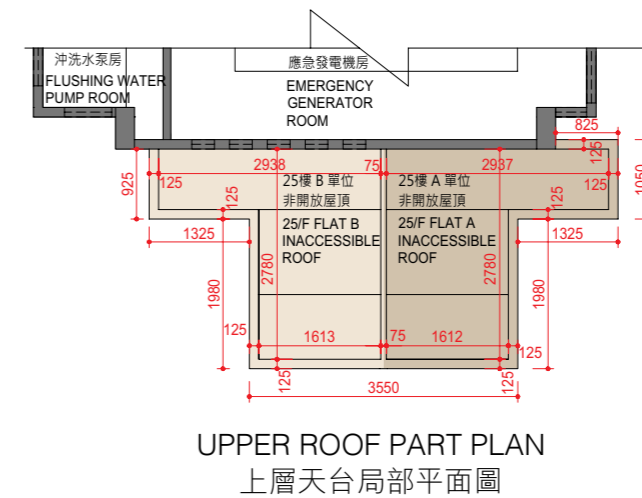
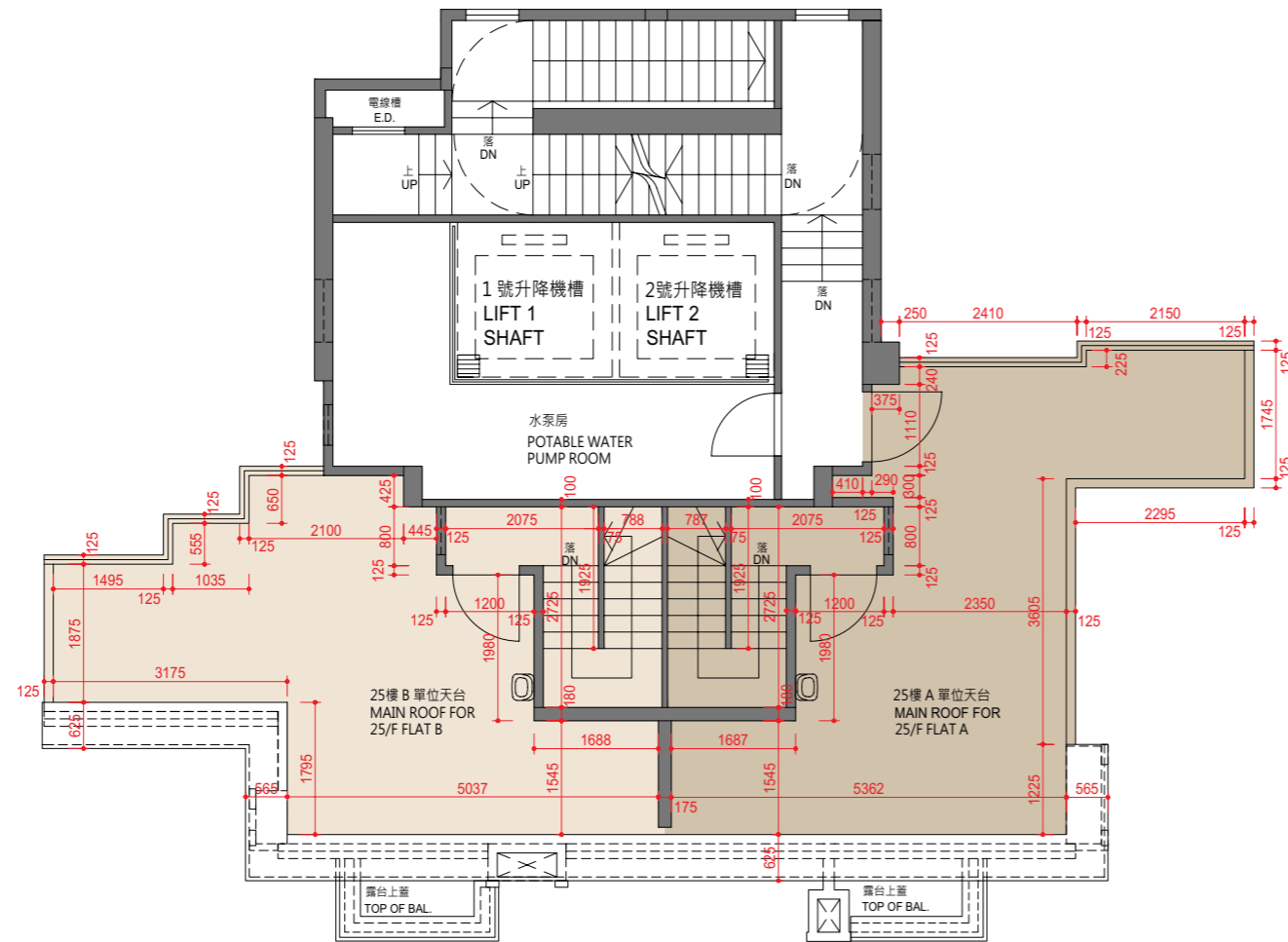
The internal areas of the residential properties on the upper floors will generally be slightly larger than those on the lower floors because of the reducing thickness of the structural walls on the upper floors.

因住宅物業的較高樓層的結構牆的厚度遞減，較高樓層的內部面積，一般比較低樓層的內部面積稍大。

10 FLOOR PLANS OF RESIDENTIAL PROPERTIES IN THE DEVELOPMENT

發展項目的住宅物業的樓面平面圖

ROOF FLOOR PLAN 天台樓面平面圖



Scale 0 5M(米)
比例 0 5M(米)

Notes:

1. The dimensions of floor plans are all structural dimensions in millimeter.
2. 3/F, 4/F, 13/F, 14/F and 24/F are omitted.

備註：

1. 平面圖所列之數字為以毫米標示之建築結構尺寸。
2. 不設3樓、4樓、13樓、14樓及24樓。

10 FLOOR PLANS OF RESIDENTIAL PROPERTIES IN THE DEVELOPMENT

發展項目的住宅物業的樓面平面圖

Roof 天台	Flat 單位	
	A	B
Thickness of Floor Slabs (excluding plaster) of each residential property (mm) 每個住宅物業的樓板(不包括灰泥)的厚度(毫米)	175	175
Floor-to-Floor Height (note: refers to the height between the top surface of the structural slab of a floor and the top surface of the structural slab of its immediate upper floor) of each residential property (mm) 每個住宅物業的層與層之間的高度(註：指該樓層之石屎地台面與上一層石屎地台面之高度距離)(毫米)	2445	2445

The internal areas of the residential properties on the upper floors will generally be slightly larger than those on the lower floors because of the reducing thickness of the structural walls on the upper floors.

因住宅物業的較高樓層的結構牆的厚度遞減，較高樓層的內部面積，一般比較低樓層的內部面積稍大。