

# 10 發展項目的住宅物業的樓面平面圖

## FLOOR PLANS OF RESIDENTIAL PROPERTIES IN THE DEVELOPMENT

在本頁上之備註和圖例適用於全部的「發展項目的住宅物業的樓面平面圖」頁數。

THE REMARKS AND LEGENDS ON THIS PAGE APPLY TO ALL PAGES OF "FLOOR PLANS OF RESIDENTIAL PROPERTIES IN THE DEVELOPMENT".

### 樓面平面圖圖例

#### LEGENDS OF THE FLOOR PLANS

A/C PLATFORM = Air-conditioner Platform 冷氣機平台

A/C UNIT = Air-conditioning Unit 冷氣機

A.D. = Air Duct 氣喉

A.F. = Architectural Feature 建築裝飾

ACO. BAL. = Acoustic Balcony 減音露台

ACO. BAL.# = Acoustic Balcony (Baffle Type) 減音露台(擋板式)

ACO. WIN.# = Acoustic Window (Baffle Type) 減音窗(擋板式)

ALUM. CLADDING (ACOUSTIC) = Aluminium Cladding (Acoustic) 鋁覆蓋層(減音)

BAL. = Balcony 露台

BED RM. = Bedroom 睡房

BATH = Bathroom 浴室

DN = Down 落

ELEC. RM. = Electrical Room 電房

ELV. = Extra Low Voltage Duct 弱電電線管道

ELV. RM. = Extra Low Voltage Duct Room 弱電電線管道房

EN. ACO. BAL.# = Enhanced Acoustic Balcony (Baffle Type) 增強型減音露台(擋板式)

EN. ACO. WIN.# = Enhanced Acoustic Window (Baffle Type) 增強型減音窗(擋板式)

F.R.R. Glass Fire Barrier = Fire Resistance Rating Glass Fire Barrier 防火玻璃

FW. = Fixed Glazing with Maintenance Window 固定玻璃維修窗戶

GLASS BALUSTRADE 1300H = Glass Balustrade of 1300mm in height 高度1300毫米的玻璃欄杆

GLASS BALUSTRADE 1400H = Glass Balustrade of 1400mm in height 高度1400毫米的玻璃欄杆

H.R. = Hose Reel 消防喉轆

LIV./DIN. = Living Room / Dining Room 客廳/飯廳

M. BATH = Master Bathroom 主人浴室

M. BED RM. = Master Bedroom 主人睡房

OPEN KIT. = Open Kitchen 開放式廚房

P.D. = Pipe Duct 管道

POTABLE WATER TANK RM. = Potable Water Tank Room 飲用水泵房

RSMRR. = Refuse Storage and Material Recovery Room 垃圾及物料回收室

STORE = Store Room 儲物室


T.R.S. = Temporary Refuse Space 臨時庇護處

TOP OF BAL. = Top of Balcony 露台上蓋

TOP OF U.P. = Top of Utility Platform 工作平台上蓋

U.P. = Utility Platform 工作平台

W.M.C. = Water Meter Cabinet 水錶櫃

 = Built-in fittings provided in the flats 隨樓附送嵌入式裝置

備註：

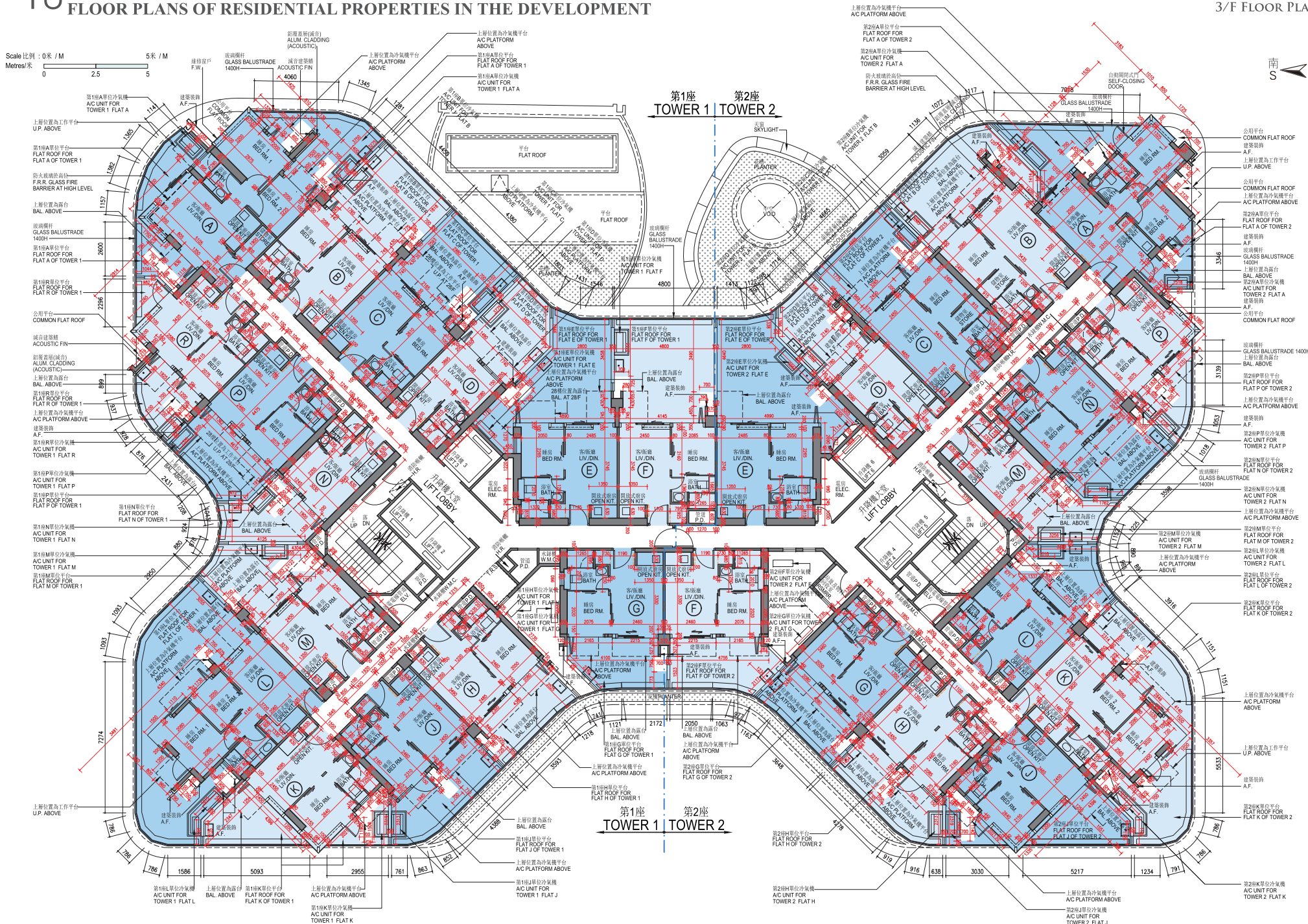
1. 部分住宅物業的露台、工作平台、平台、天台或外牆或設有外露之公用喉管，或外牆裝飾板內藏之公用喉管。
2. 部分住宅物業內之部分天花或有跌級樓板，用以安裝上層之機電設備或配合上層之結構、建築設計及/或裝修設計上的需要。
3. 部分住宅物業內或設有假陣或假天花用以安裝冷氣喉管及/或其他機電設備。
4. 平面圖所列之數字為以毫米標示之建築結構尺寸，並以四捨五入至整數。
5. 各住宅物業的樓面平面圖內所展示之裝置及設備的圖標如浴缸、洗手盆、座廁、淋浴間、洗滌盆、櫃(如有)等乃根據最新經批准的建築圖則擬備，其形狀、尺寸、比例或與實際提供的裝置及設備存在差異，僅供示意及參考之用。

Remarks:

1. Common pipes exposed or enclosed in cladding may be located at the balcony, utility platform, flat roof, roof or external wall of some residential properties.
2. There may be sunken slabs at some parts of the ceiling inside some residential properties for the installation of mechanical and electrical services of the floor above or due to the structural, architectural and/or decoration design requirements of the floor above.
3. There may be ceiling bulkheads or false ceiling inside some residential properties for the installation of air-conditioning conduits and/or other mechanical and electrical services.
4. The dimensions of the floor plans are all structural dimensions in millimeter and rounded off to the nearest integer.
5. Those icons of fittings and fitments shown on the floor plans of residential properties like bathtubs, wash basins, water closets, shower cubicles, sink units, cabinets (if any) etc. are prepared in accordance with the latest approved building plans. Their shapes, dimensions, scales may be differed from the fittings and fitments actually provided and they are for indication and reference only.

# 10 發展項目的住宅物業的樓面平面圖 FLOOR PLANS OF RESIDENTIAL PROPERTIES IN THE DEVELOPMENT

## 3樓平面圖 3/F FLOOR PLAN



備註：1. 平面圖所列的數字為以毫米標示之建築結構尺寸，並以四捨五入至整數。  
2. 平台空白位置為供維修大廈設備使用的公用地方。

Notes: 1. The dimensions in floor plans are all structural dimensions in millimeter and rounded off to the nearest integer.  
2. Blank areas on the flat roof are common areas for building facility maintenance.

# 10 發展項目的住宅物業的樓面平面圖

## FLOOR PLANS OF RESIDENTIAL PROPERTIES IN THE DEVELOPMENT

每個住宅物業 Each Residential Property	樓層 Floor	第 1 座 Tower 1														
		單位 Flat														
		A	B	C	D	E	F	G	H	J	K	L	M	N	P	R
層與層之間的高度 (毫米) Floor-to-Floor Height (mm)	3 樓 3/F	3500	3500	3500	3500	3500	3500	3500	3500	3500	3500	3500	3500	3500	3500	3500
樓板 (不包括灰泥) 的厚度 (毫米) Thickness of Floor Slab (excluding plaster) (mm)		160,285	160	160	160	160	160	160	160	160	160	160	160	160	160	160

每個住宅物業 Each Residential Property	樓層 Floor	第 2 座 Tower 2													
		單位 Flat													
		A	B	C	D	E	F	G	H	J	K	L	M	N	P
層與層之間的高度 (毫米) Floor-to-Floor Height (mm)	3 樓 3/F	3500	3500	3500	3500	3500	3500	3500	3500	3500	3500	3500	3500	3500	3500
樓板 (不包括灰泥) 的厚度 (毫米) Thickness of Floor Slab (excluding plaster) (mm)		160	160	160	160	160	160	160	160	160	160	160	160	160	160

因住宅物業的較高樓層的結構牆的厚度遞減，較高樓層的內部面積，一般比較低樓層的內部面積稍大。

The internal areas of the residential properties on the upper floors will generally be slightly larger than those on the lower floors because of the reducing thickness of the structural walls on the upper floors.

請參閱本售樓說明書第22頁為住宅物業樓面平面圖而設之備註及名詞及簡稱的圖例。

Please refer to page 22 of this sales brochure for the remarks and legends of the terms and abbreviations for the floor plans of residential properties.

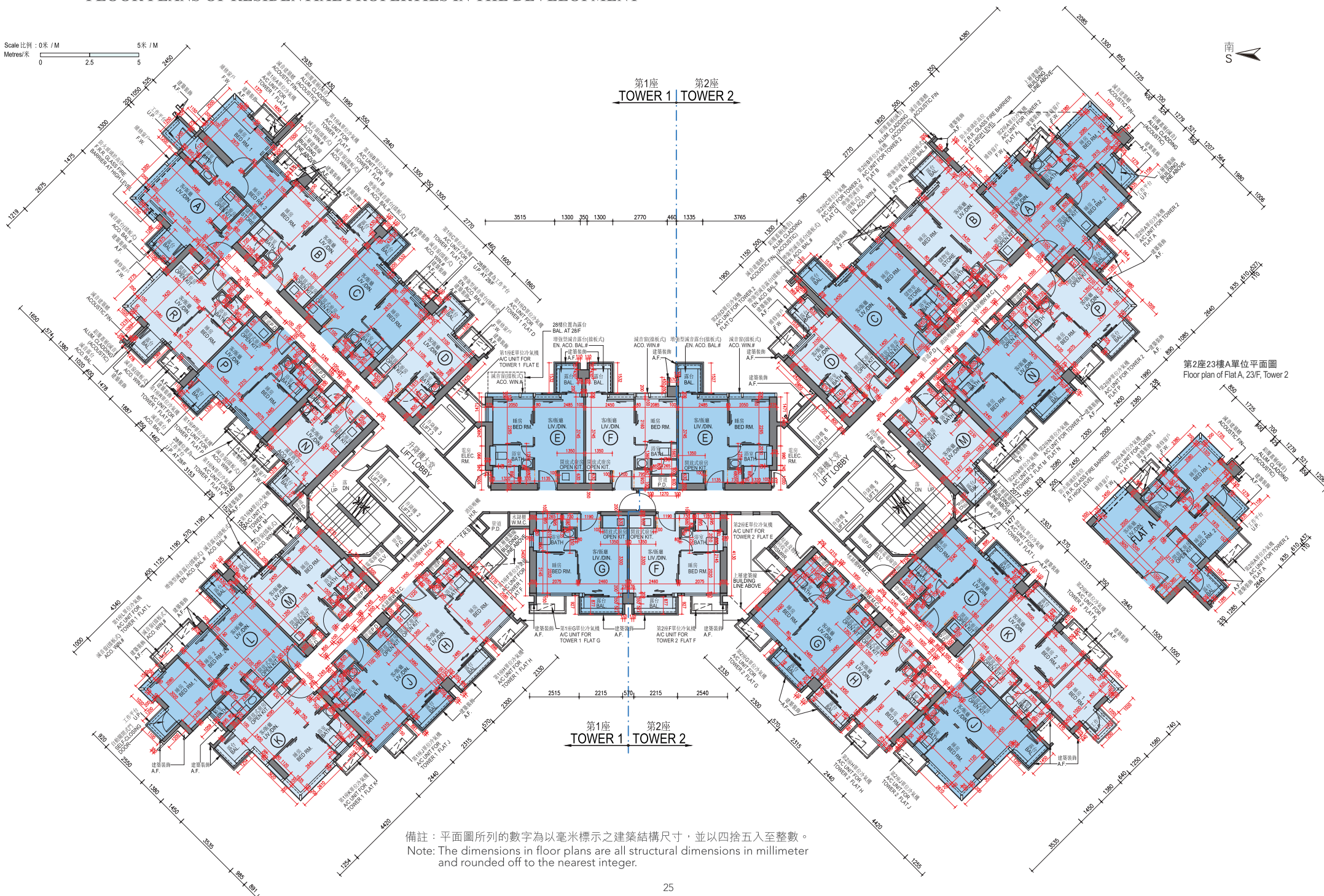


# 10 發展項目的住宅物業的樓面平面圖

## FLOOR PLANS OF RESIDENTIAL PROPERTIES IN THE DEVELOPMENT

5樓-12樓、15樓-23樓、25樓-27樓平面圖  
5/F-12/F, 15/F-23/F, 25/F-27/F FLOOR PLAN

Scale 比例: 0米 / M 5米 / M  
Metres/米 0 2.5 5



備註：平面圖所列的數字為以毫米標示之建築結構尺寸，並以四捨五入至整數。  
Note: The dimensions in floor plans are all structural dimensions in millimeter and rounded off to the nearest integer.

# 10 發展項目的住宅物業的樓面平面圖

## FLOOR PLANS OF RESIDENTIAL PROPERTIES IN THE DEVELOPMENT

每個住宅物業 Each Residential Property	樓層 Floor	第 1 座 Tower 1														
		單位 Flat														
		A	B	C	D	E	F	G	H	J	K	L	M	N	P	R
層與層之間的高度 (毫米) Floor-to-Floor Height (mm)	5 樓 -12 樓、 15 樓 -23 樓、 25 樓 -26 樓	3500	3500	3500	3500	3500	3500	3500	3500	3500	3500	3500	3500	3500	3500	3500
樓板 (不包括灰泥) 的厚度 (毫米) Thickness of Floor Slab (excluding plaster) (mm)	5/F-12/F, 15/F-23/F, 25/F-26/F	160, 285	160	160	160	160	160	160	160	160	160	160	160	160	160	160

每個住宅物業 Each Residential Property	樓層 Floor	第 2 座 Tower 2													
		單位 Flat													
		A	B	C	D	E	F	G	H	J	K	L	M	N	P
層與層之間的高度 (毫米) Floor-to-Floor Height (mm)	5 樓 -12 樓、 15 樓 -23 樓、 25 樓 -26 樓	3500	3500	3500	3500	3500	3500	3500	3500	3500	3500	3500	3500	3500	3500
樓板 (不包括灰泥) 的厚度 (毫米) Thickness of Floor Slab (excluding plaster) (mm)	5/F-12/F, 15/F-23/F, 25/F-26/F	160	160	160	160	160	160	160	160	160	160	160	160	160	160

每個住宅物業 Each Residential Property	樓層 Floor	第 1 座 Tower 1														
		單位 Flat														
		A	B	C	D	E	F	G	H	J	K	L	M	N	P	R
層與層之間的高度 (毫米) Floor-to-Floor Height (mm)	27 樓 27/F	3200, 3500	3500	3150, 3500	3150, 3200, 3500	3150, 3200, 3500	3150, 3200, 3500	3150, 3500	3150, 3500	3200, 3500	3150, 3200, 3500	3200, 3500	3150, 3200, 3500	3150, 3500	3150, 3200, 3500	3150, 3200, 3500
樓板 (不包括灰泥) 的厚度 (毫米) Thickness of Floor Slab (excluding plaster) (mm)		160, 285	160	160	160	160	160	160	160	160	160	160	160	160	160	160

每個住宅物業 Each Residential Property	樓層 Floor	第 2 座 Tower 2													
		單位 Flat													
		A	B	C	D	E	F	G	H	J	K	L	M	N	P
層與層之間的高度 (毫米) Floor-to-Floor Height (mm)	27 樓 27/F	3500	3500	3500	3500	3500	3500	3500	3500	3500	3500	3500	3500	3500	3500
樓板 (不包括灰泥) 的厚度 (毫米) Thickness of Floor Slab (excluding plaster) (mm)		160	160	160	160	160	160	160	160	160	160	160	160	160	160

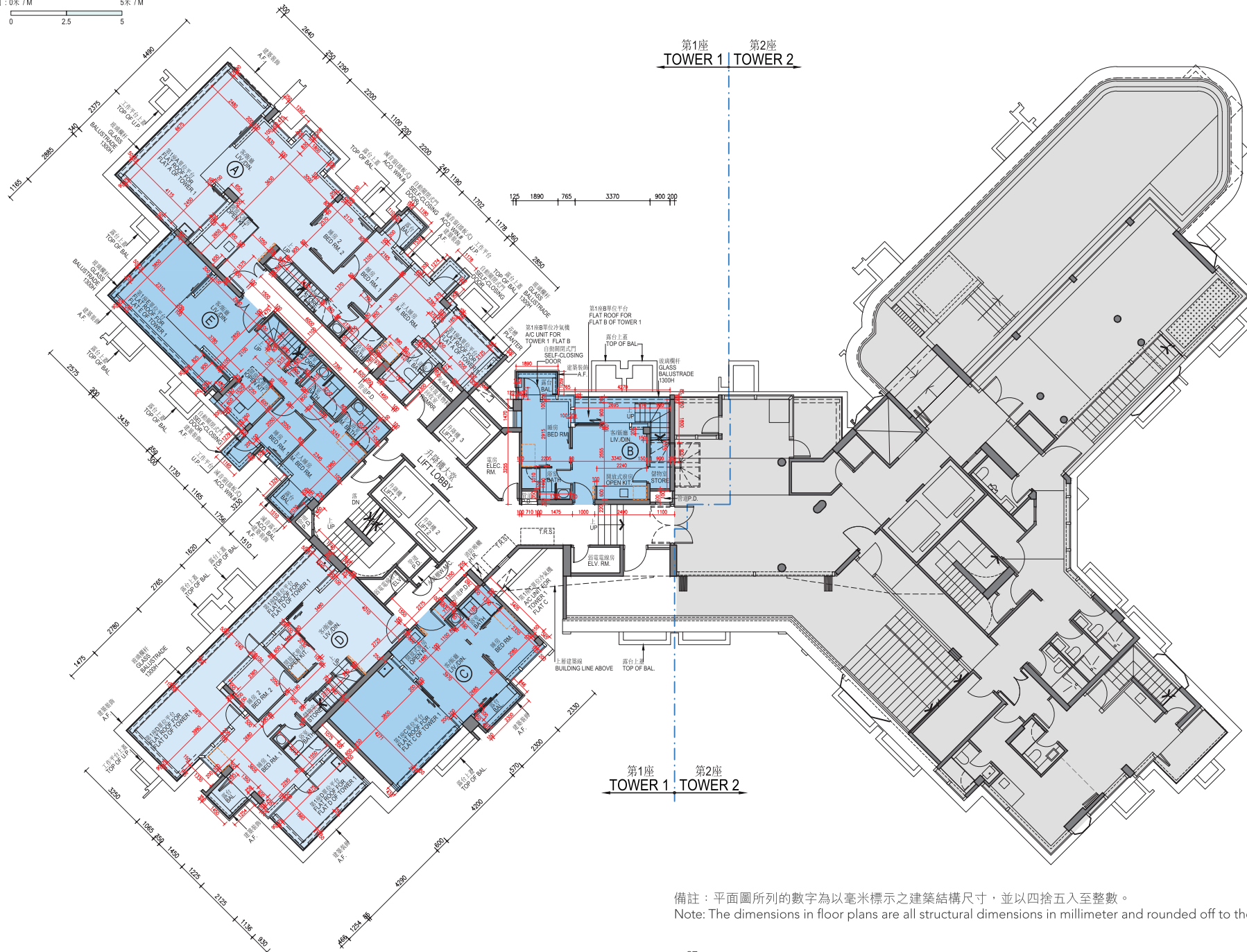
因住宅物業的較高樓層的結構牆的厚度遞減，較高樓層的內部面積，一般比較低樓層的內部面積稍大。

The internal areas of the residential properties on the upper floors will generally be slightly larger than those on the lower floors because of the reducing thickness of the structural walls on the upper floors.

請參閱本售樓說明書第22頁為住宅物業樓面平面圖而設之備註及名詞及簡稱的圖例。

Please refer to page 22 of this sales brochure for the remarks and legends of the terms and abbreviations for the floor plans of residential properties.

Scale 比例: 0米 / M 5米 / M  
 Metres/米 0 2.5 5



備註: 平面圖所列的數字為以毫米標示之建築結構尺寸, 並以四捨五入至整數。  
 Note: The dimensions in floor plans are all structural dimensions in millimeter and rounded off to the nearest integer.

# 10 發展項目的住宅物業的樓面平面圖

## FLOOR PLANS OF RESIDENTIAL PROPERTIES IN THE DEVELOPMENT

每個住宅物業 Each Residential Property	樓層 Floor	第 1 座 Tower 1				
		單位 Flat				
		A	B	C	D	E
層與層之間的高度 (毫米) Floor-to-Floor Height (mm)	28 樓 28/F	4000	4000	4000	4000	4000
樓板 (不包括灰泥) 的厚度 (毫米) Thickness of Floor Slab (excluding plaster) (mm)		160, 200, 250	160	160	160, 250	160, 250

因住宅物業的較高樓層的結構牆的厚度遞減，較高樓層的內部面積，一般比較低樓層的內部面積稍大。

The internal areas of the residential properties on the upper floors will generally be slightly larger than those on the lower floors because of the reducing thickness of the structural walls on the upper floors.

請參閱本售樓說明書第22頁為住宅物業樓面平面圖而設之備註及名詞及簡稱的圖例。

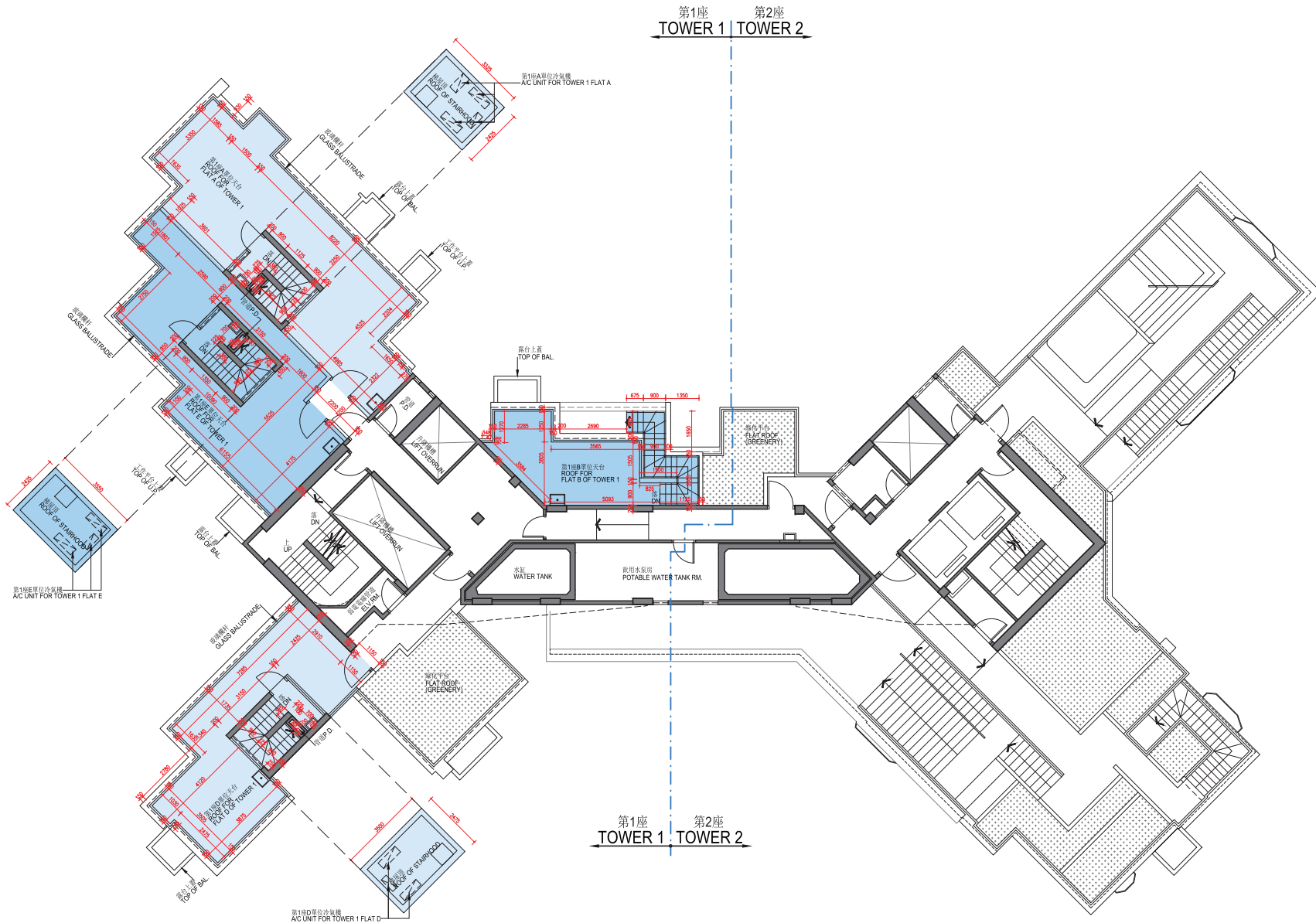
Please refer to page 22 of this sales brochure for the remarks and legends of the terms and abbreviations for the floor plans of residential properties.



# 10 發展項目的住宅物業的樓面平面圖 FLOOR PLANS OF RESIDENTIAL PROPERTIES IN THE DEVELOPMENT

天台平面圖  
ROOF FLOOR PLAN

Scale 比例：0米 / M 5米 / M  
Metres/米 0 2.5 5



- 備註：1. 平面圖所列的數字為以毫米標示之建築結構尺寸，並以四捨五入至整數。  
2. 有關天台的位置在該發展項目經建築事務監督批准的建築圖則上列為平台，實際上其用途為天台，其面積將以天台計算。
- Notes: 1. The dimensions in floor plans are all structural dimensions in millimeter and rounded off to the nearest integer.  
2. For the location of the roof, it was specified as flat roof in the general building plans of the development approved by the Building Authority. In practice, it is a roof and its area is calculated under the roof.



# 10 發展項目的住宅物業的樓面平面圖

## FLOOR PLANS OF RESIDENTIAL PROPERTIES IN THE DEVELOPMENT

每個住宅物業 Each Residential Property	樓層 Floor	第 1 座 Tower 1				
		單位 Flat				
		A	B	C	D	E
層與層之間的高度 (毫米) Floor-to-Floor Height (mm)	天台 Roof	Not Applicable				
樓板 (不包括灰泥) 的厚度 (毫米) Thickness of Floor Slab (excluding plaster) (mm)						

因住宅物業的較高樓層的結構牆的厚度遞減，較高樓層的內部面積，一般比較低樓層的內部面積稍大。

The internal areas of the residential properties on the upper floors will generally be slightly larger than those on the lower floors because of the reducing thickness of the structural walls on the upper floors.

請參閱本售樓說明書第22頁為住宅物業樓面平面圖而設之備註及名詞及簡稱的圖例。

Please refer to page 22 of this sales brochure for the remarks and legends of the terms and abbreviations for the floor plans of residential properties.