

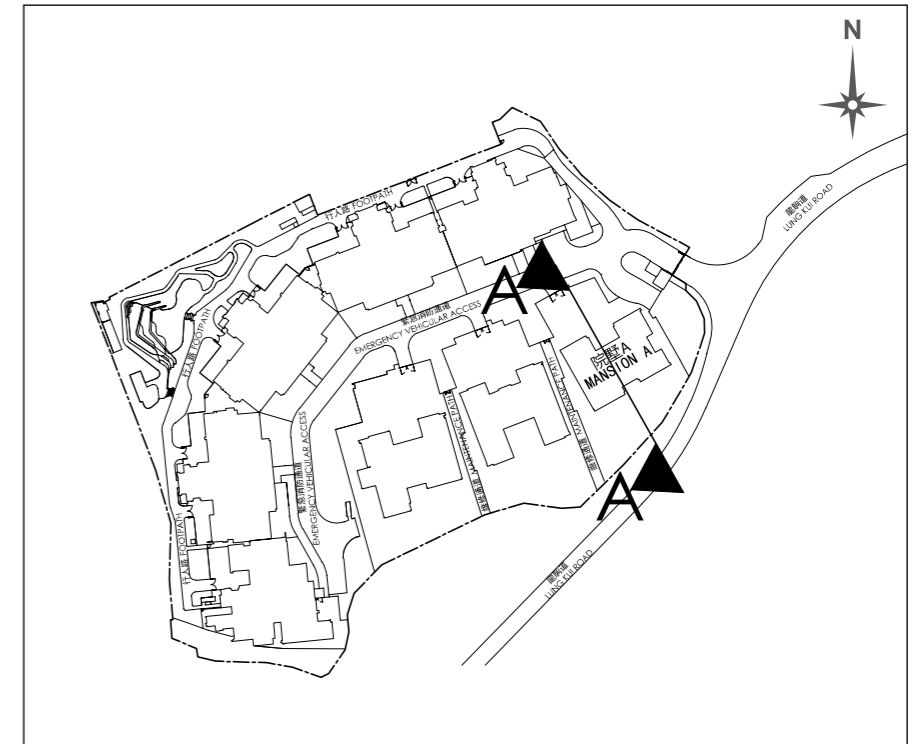
橫截面圖 A-A
Cross-section plan A-A

毗連建築物的一段緊急消防通道為香港主水平基準以上137.42米至138.06米。
The part of Emergency Vehicular Access adjacent to the building is 137.42 metres to 138.06 metres above Hong Kong Principal Datum (HKPD).

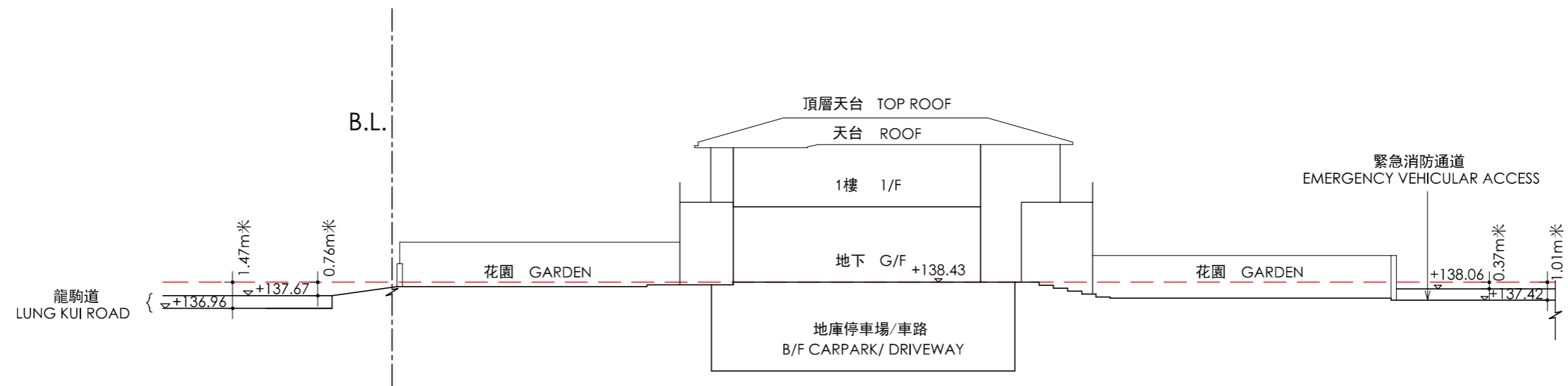
毗連建築物的一段龍駒道為香港主水平基準以上136.96米至137.67米。
The part of Lung Kui Road adjacent to the building is 136.96 metres to 137.67 metres above Hong Kong Principal Datum (HKPD).

- 發展項目的界線(B.L.)
Boundary Line of the Development
- ▽ 香港主水平基準以上高度(米)
Height above the Hong Kong Principal Datum (PD) (Metre)
- 虛線為最低住宅樓層水平
Dotted line denotes the lowest residential floor

索引圖
Key Plan



院墅A
Mansion A

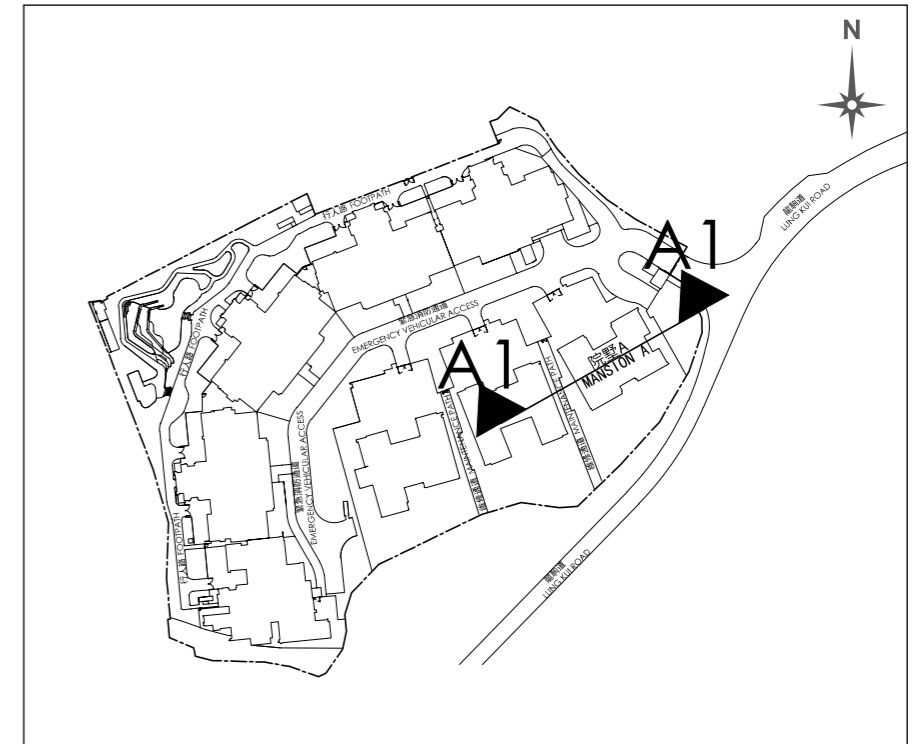


橫截面圖 A1-A1
Cross-section plan A1-A1

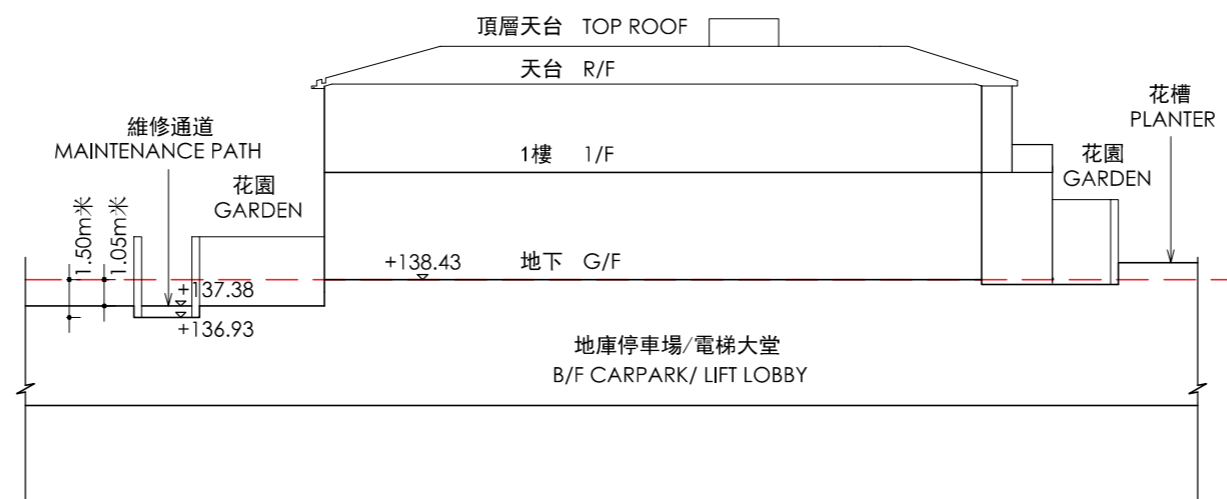
毗連建築物的一段維修通道為香港主水平基準以上136.93米至137.38米。
The part of maintenance path adjacent to the building is 136.93 metres to 137.38 metres above Hong Kong Principal Datum (HKPD).

- ▽ 香港主水平基準以上高度(米)
Height above the Hong Kong Principal Datum (PD) (Metre)
- 虛線為最低住宅樓層水平
Dotted line denotes the lowest residential floor

索引圖
Key Plan



院墅A
Mansion A



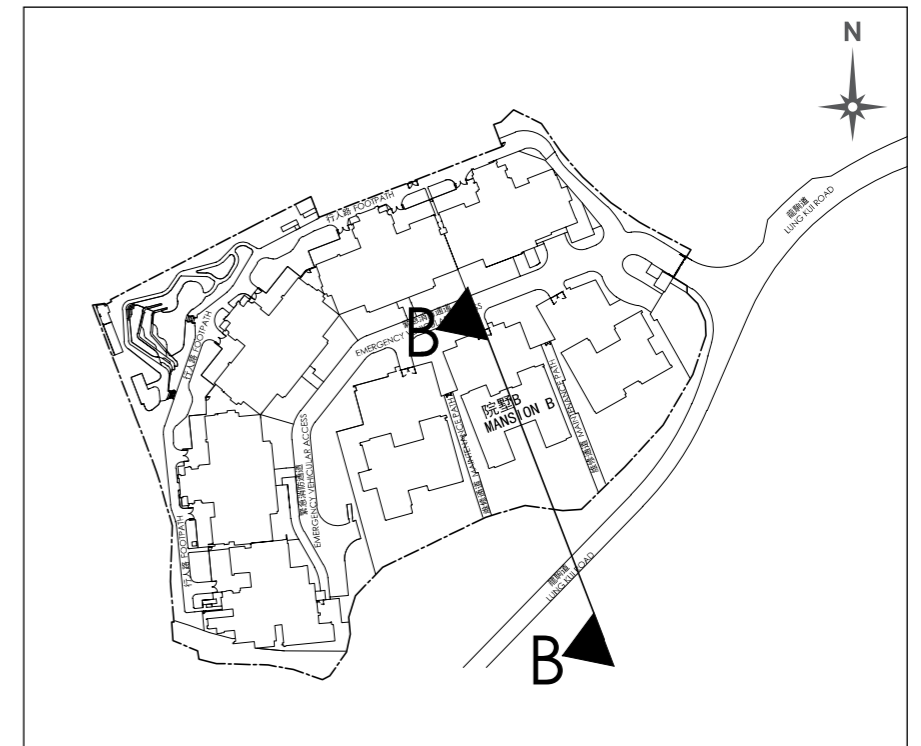
橫截面圖 B-B
Cross-section plan B-B

毗連建築物的一段緊急消防通道為香港主水平基準以上137.87米至138.10米。
The part of Emergency Vehicular Access adjacent to the building is 137.87 metres to 138.10 metres above Hong Kong Principal Datum (HKPD).

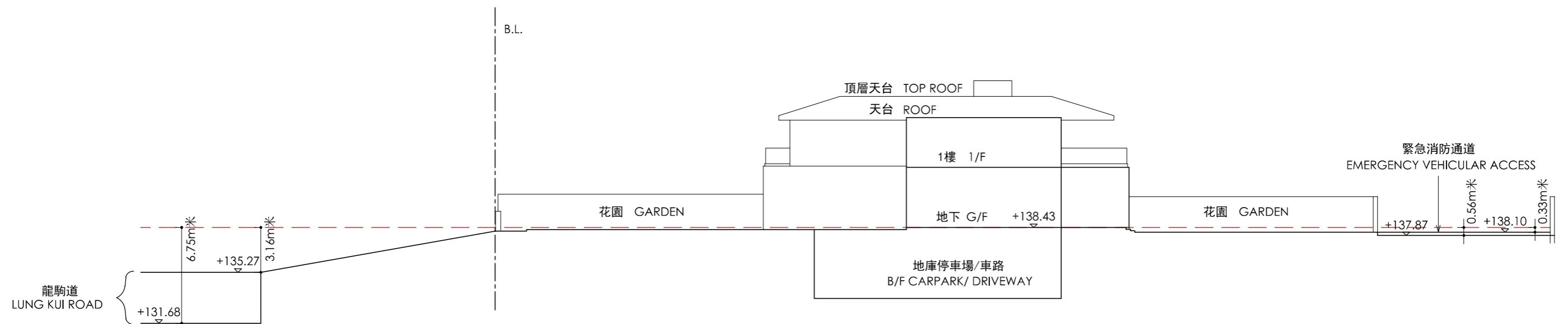
毗連建築物的一段龍駒道為香港主水平基準以上131.68米至135.27米。
The part of Lung Kui Road adjacent to the building is 131.68 metres to 135.27 metres above Hong Kong Principal Datum (HKPD).

- 發展項目的界線(B.L.)
Boundary Line of the Development
- ▽ 香港主水平基準以上高度(米)
Height above the Hong Kong Principal Datum (PD) (Metre)
- 虛線為最低住宅樓層水平
Dotted line denotes the lowest residential floor

索引圖
Key Plan



院墜B
Mansion B



橫截面圖 B1-B1

Cross-section plan B1-B1

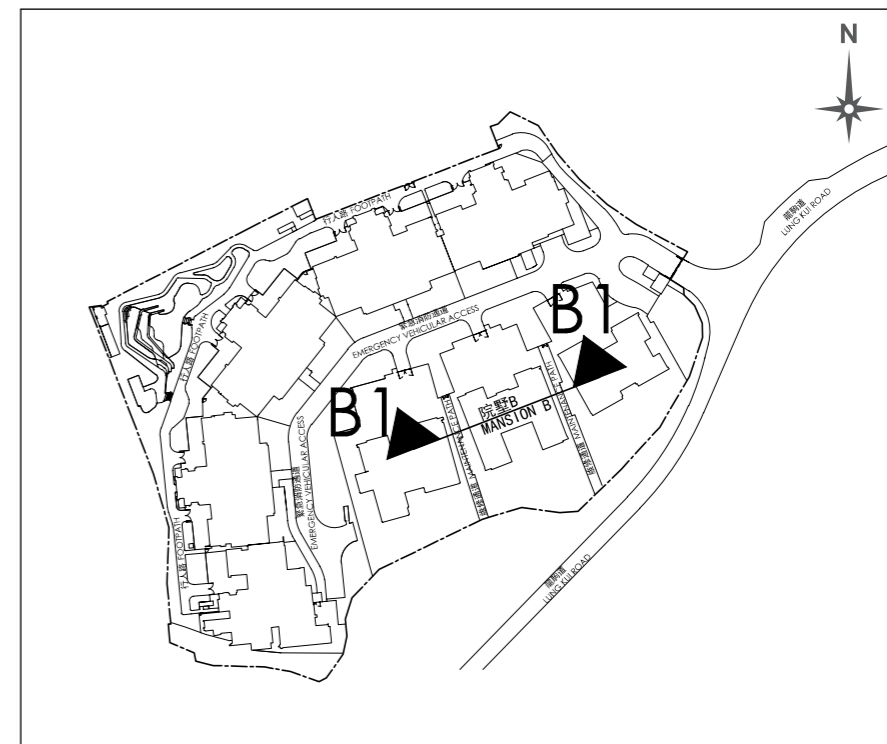
毗連建築物的一段維修通道為香港主水平基準以上136.93米至137.38米。

The part of maintenance path adjacent to the building is 136.93 metres to 137.38 metres above Hong Kong Principal Datum (HKPD).

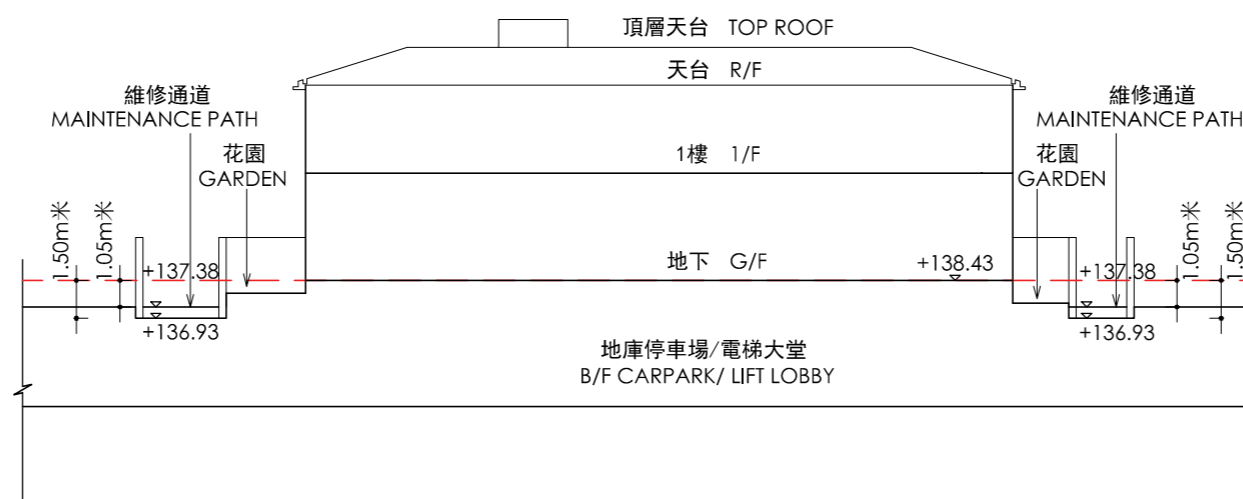
▽ 香港主水平基準以上高度(米)
Height above the Hong Kong Principal Datum (PD) (Metre)

----- 虛線為最低住宅樓層水平
Dotted line denotes the lowest residential floor

索引圖
Key Plan



院墅B
Mansion B



橫截面圖 C-C

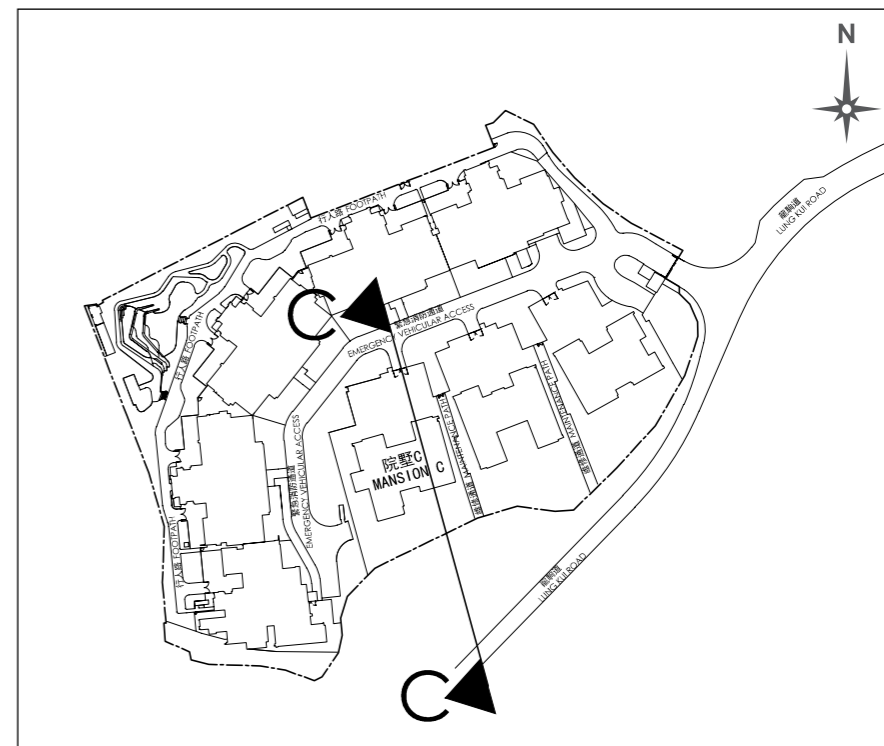
Cross-section plan C-C

毗連建築物的一段緊急消防通道為香港主水平基準以上138.10米。
The part of Emergency Vehicular Access adjacent to the building is 138.10 metres above Hong Kong Principal Datum (HKPD).

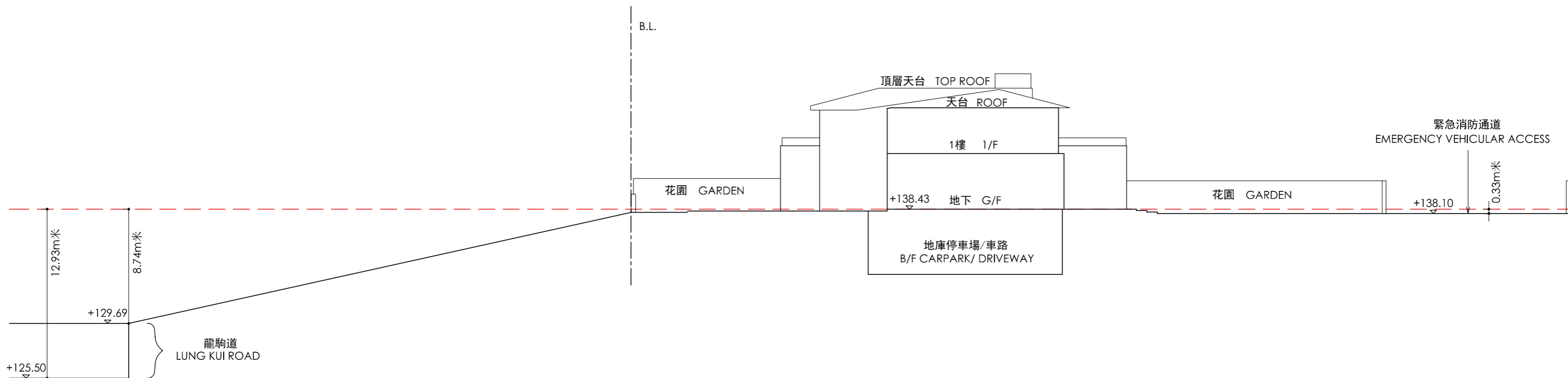
毗連建築物的一段龍駒道為香港主水平基準以上125.50米至129.69米。
The part of Lung Kui Road adjacent to the building is 125.50 metres to 129.69 metres above Hong Kong Principal Datum (HKPD).

- 發展項目的界線(B.L.)
Boundary Line of the Development
- ▽ 香港主水平基準以上高度(米)
Height above the Hong Kong Principal Datum (PD) (Metre)
- 虛線為最低住宅樓層水平
Dotted line denotes the lowest residential floor

索引圖
Key Plan



院墅C
Mansion C



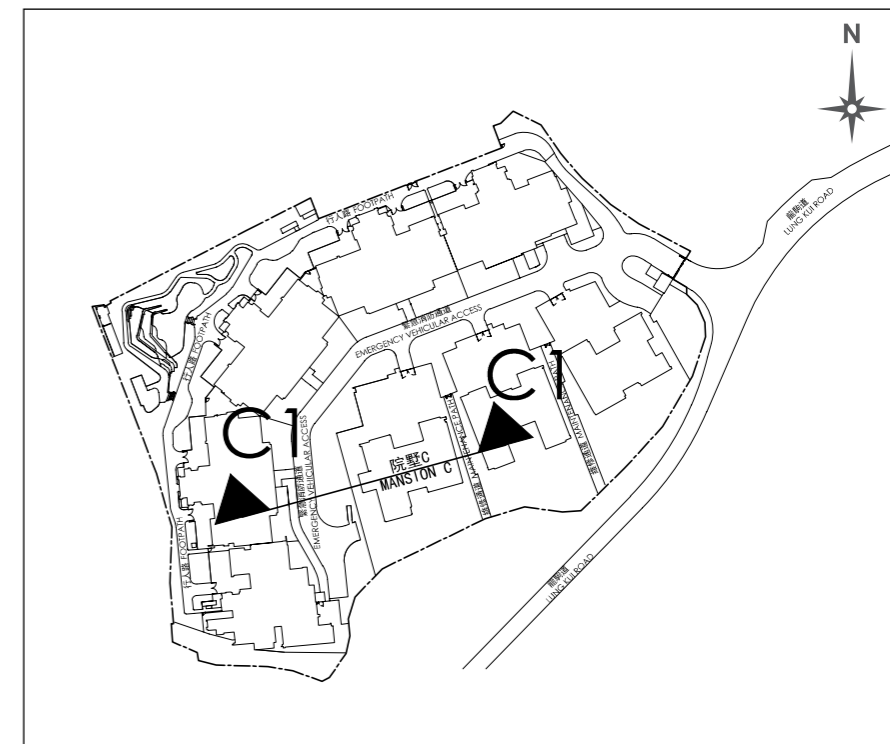
橫截面圖 C1-C1
Cross-section plan C1-C1

毗連建築物的一段緊急消防通道為香港主水平基準以上138.10米。
The part of Emergency Vehicular Access adjacent to the building is 138.10 metres above Hong Kong Principal Datum (HKPD).

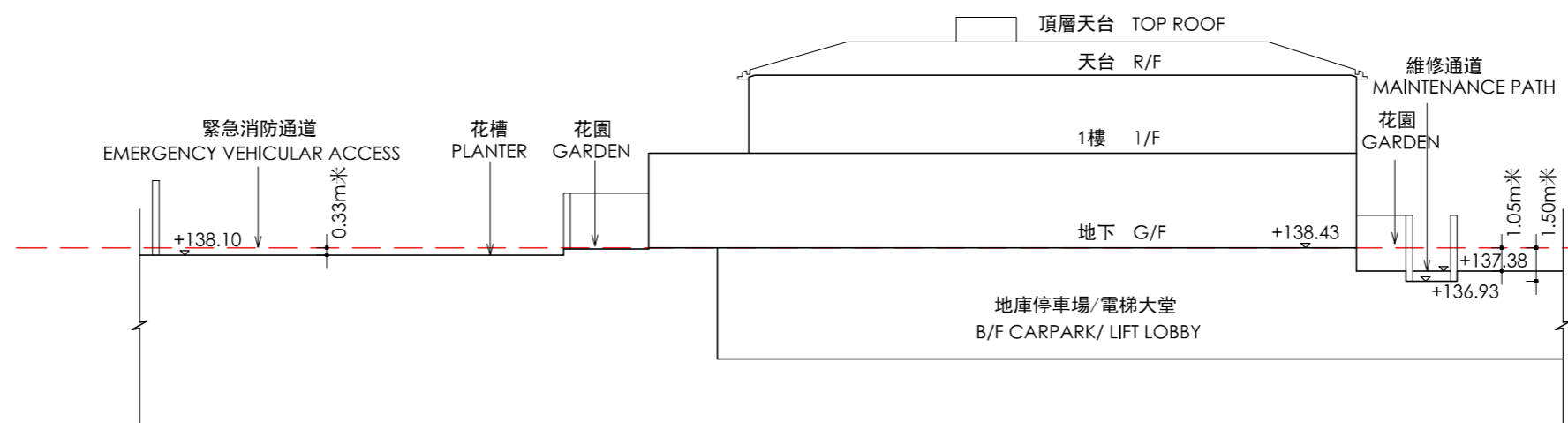
毗連建築物的一段維修通道為香港主水平基準以上136.93米至137.38米。
The part of maintenance path adjacent to the building is 136.93 metres to 137.38 metres above Hong Kong Principal Datum (HKPD).

- ▽ 香港主水平基準以上高度(米)
Height above the Hong Kong Principal Datum (PD) (Metre)
- 虛線為最低住宅樓層水平
Dotted line denotes the lowest residential floor

索引圖
Key Plan



院墜C
Mansion C



橫截面圖 1-1
Cross-section plan 1-1

毗連建築物的一段緊急消防通道為香港主水平基準以上137.48米至138.15米。
The part of Emergency Vehicular Access adjacent to the building is 137.48 metres to 138.15 metres above Hong Kong Principal Datum (HKPD).

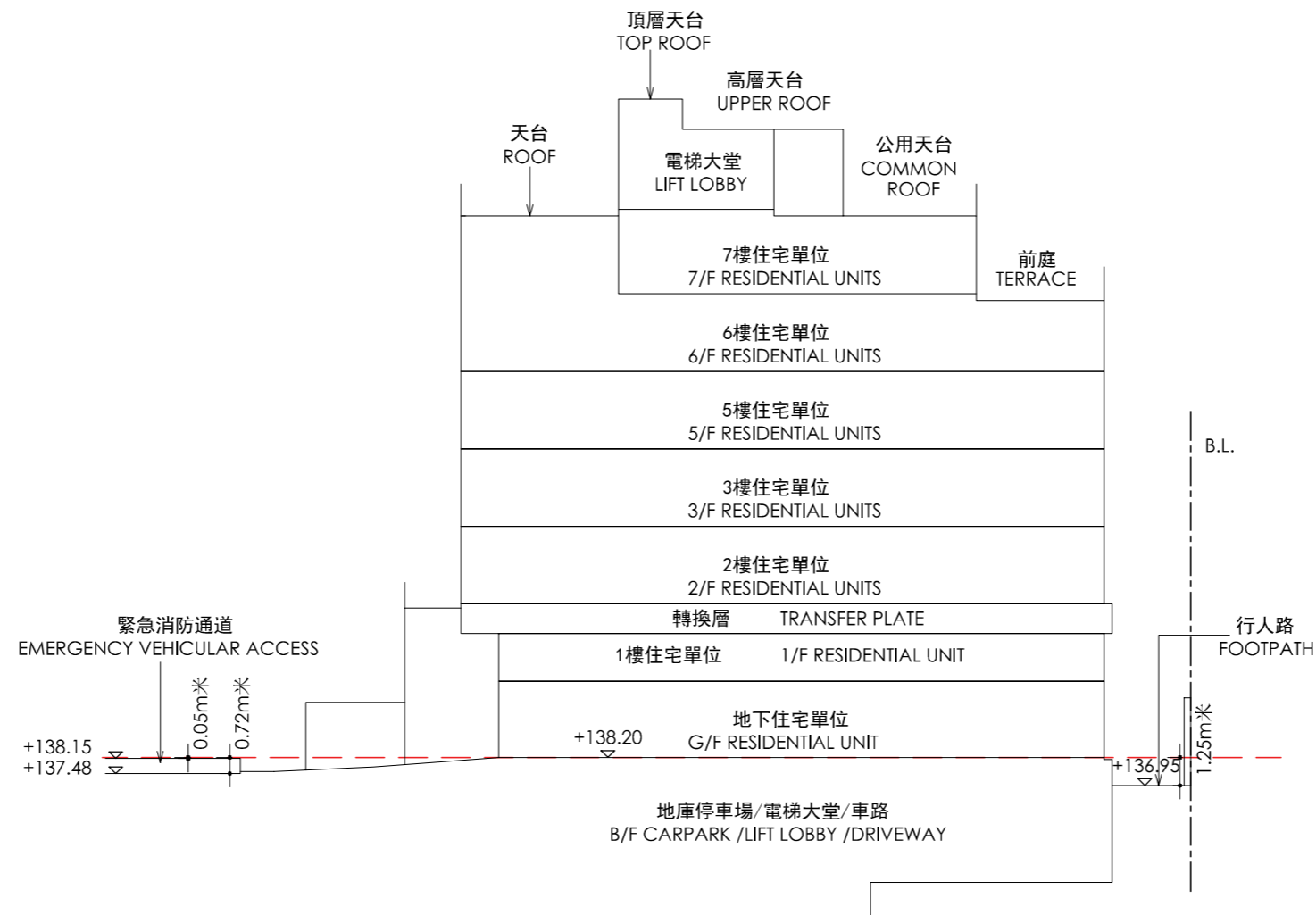
毗連建築物的一段行人路為香港主水平基準以上136.95米。
The part of footpath adjacent to the building is 136.95 metres above Hong Kong Principal Datum (HKPD).

- 發展項目的界線(B.L.)
Boundary Line of the Development
- ▽ 香港主水平基準以上高度(米)
Height above the Hong Kong Principal Datum (PD) (Metre)
- 虛線為最低住宅樓層水平
Dotted line denotes the lowest residential floor

索引圖
Key Plan



第1座
Tower 1



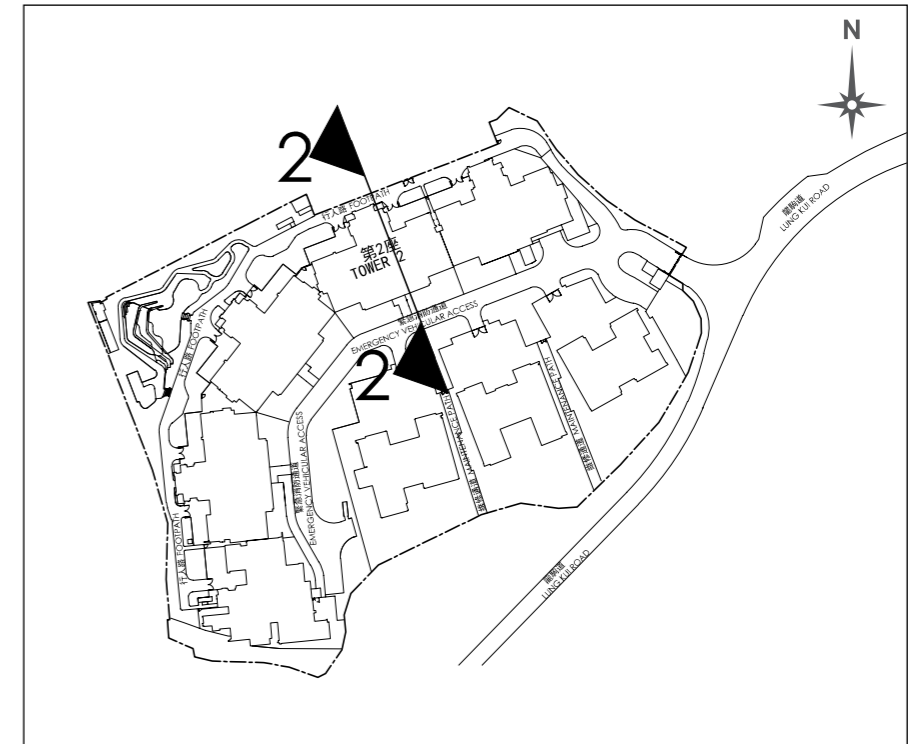
橫截面圖 2-2
Cross-section plan 2-2

毗連建築物的一段緊急消防通道為香港主水平基準以上138.10米。
The part of Emergency Vehicular Access adjacent to the building is 138.10 metres above Hong Kong Principal Datum (HKPD).

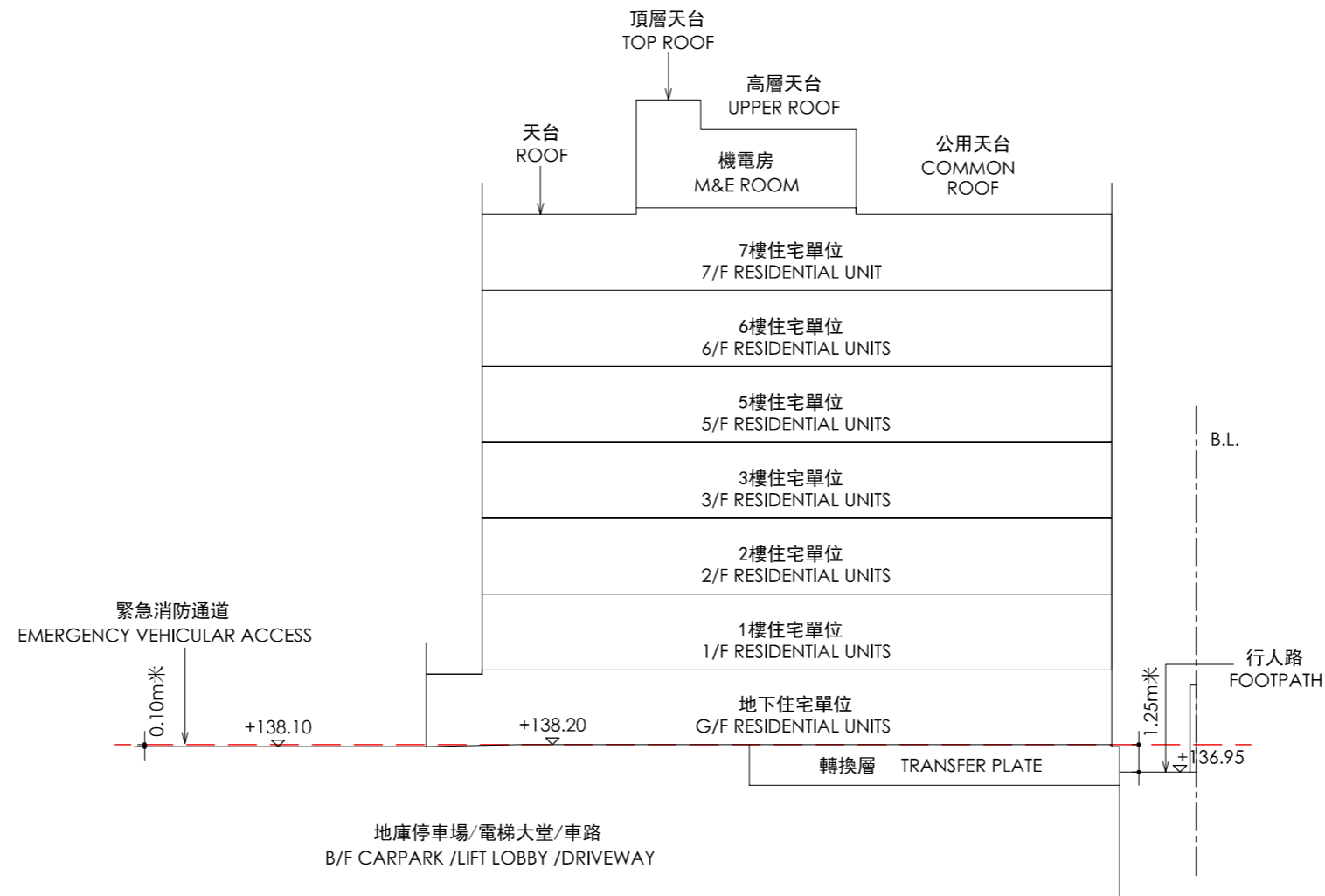
毗連建築物的一段行人路為香港主水平基準以上136.95米。
The part of footpath adjacent to the building is 136.95 metres above Hong Kong Principal Datum (HKPD).

- 發展項目的界線(B.L.)
Boundary Line of the Development
- ▽ 香港主水平基準以上高度(米)
Height above the Hong Kong Principal Datum (PD) (Metre)
- 虛線為最低住宅樓層水平
Dotted line denotes the lowest residential floor

索引圖
Key Plan



第2座
Tower 2



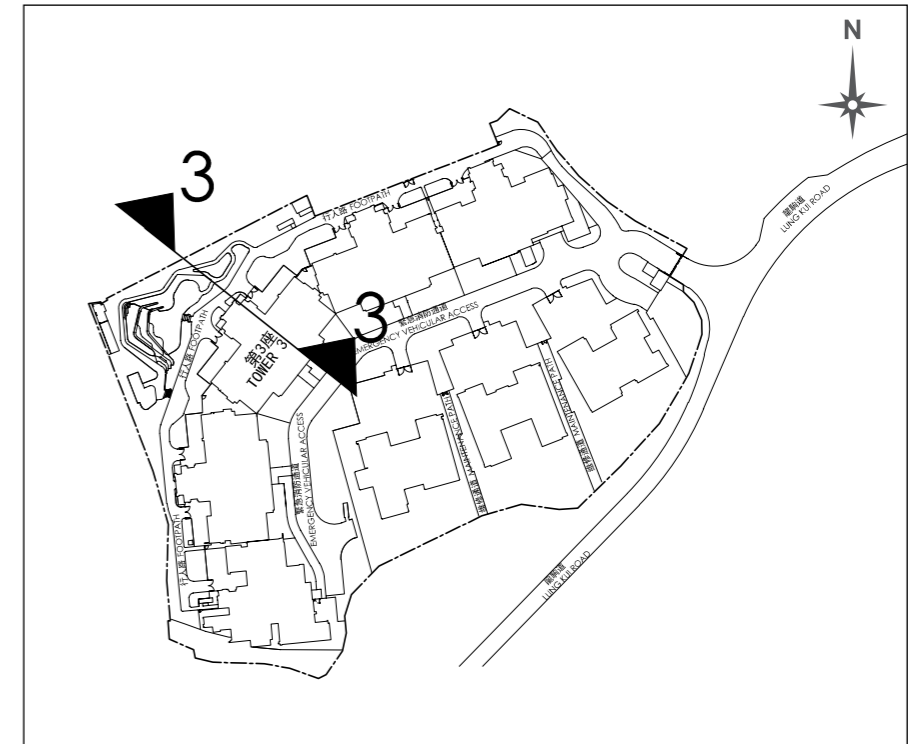
橫截面圖 3-3
Cross-section plan 3-3

毗連建築物的一段緊急消防通道為香港主水平基準以上138.10米。
The part of Emergency Vehicular Access adjacent to the building is 138.10 metres above Hong Kong Principal Datum (HKPD).

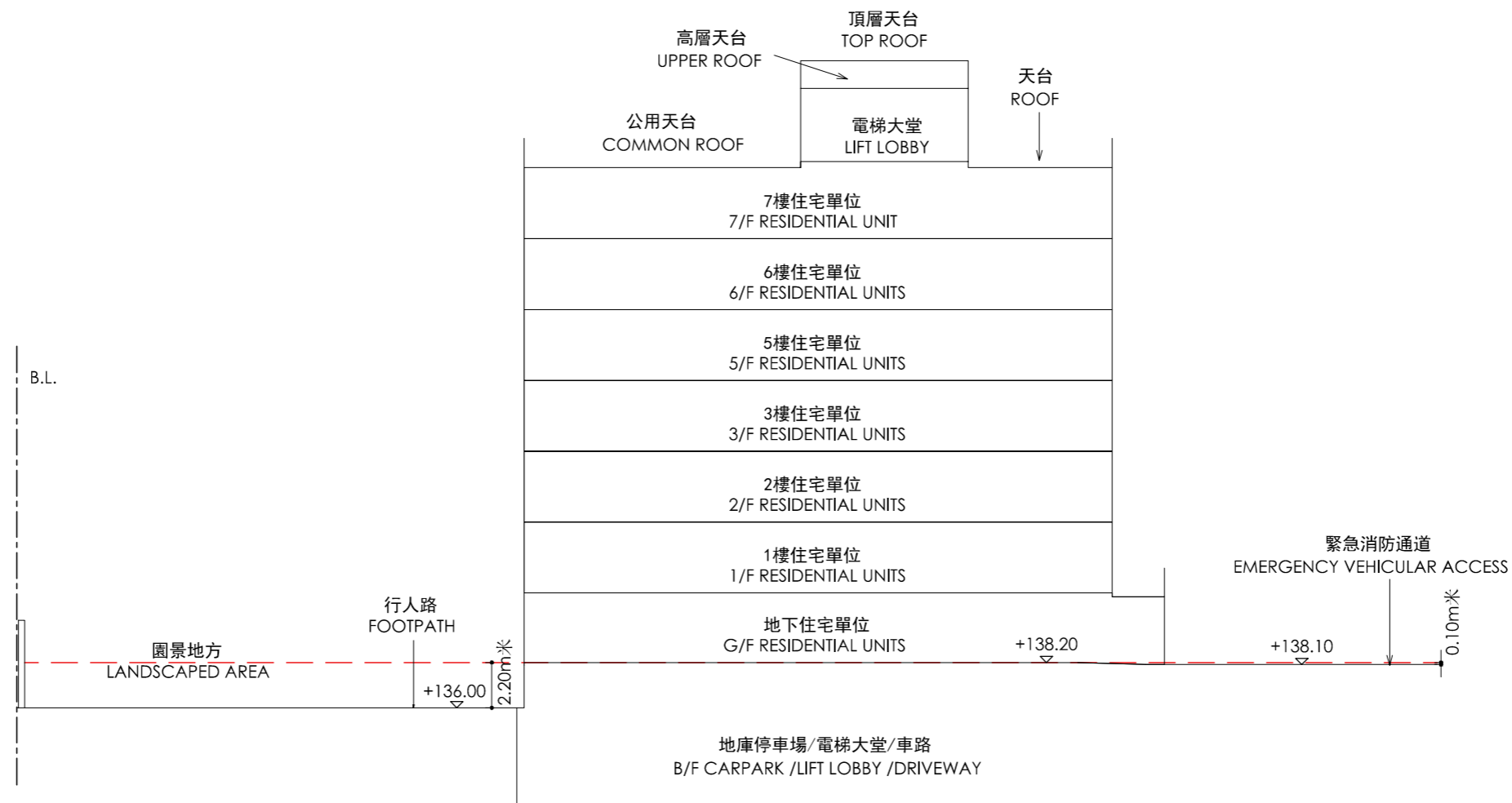
毗連建築物的一段行人路為香港主水平基準以上136.00米。
The part of footpath adjacent to the building is 136.00 metres above Hong Kong Principal Datum (HKPD).

- 發展項目的界線(B.L.)
Boundary Line of the Development
- ▽ 香港主水平基準以上高度(米)
Height above the Hong Kong Principal Datum (PD) (Metre)
- 虛線為最低住宅樓層水平
Dotted line denotes the lowest residential floor

索引圖
Key Plan



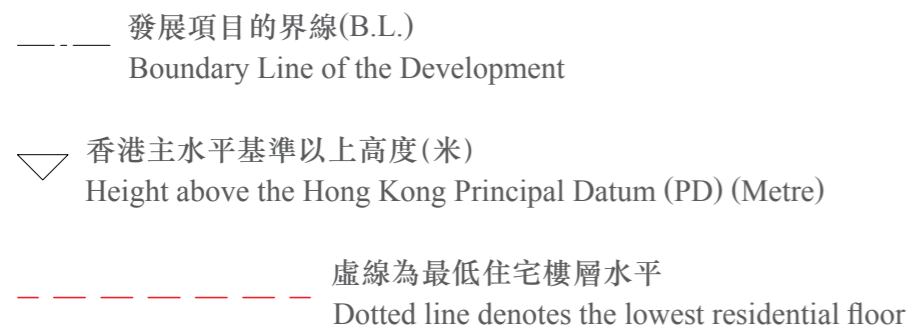
第3座
Tower 3



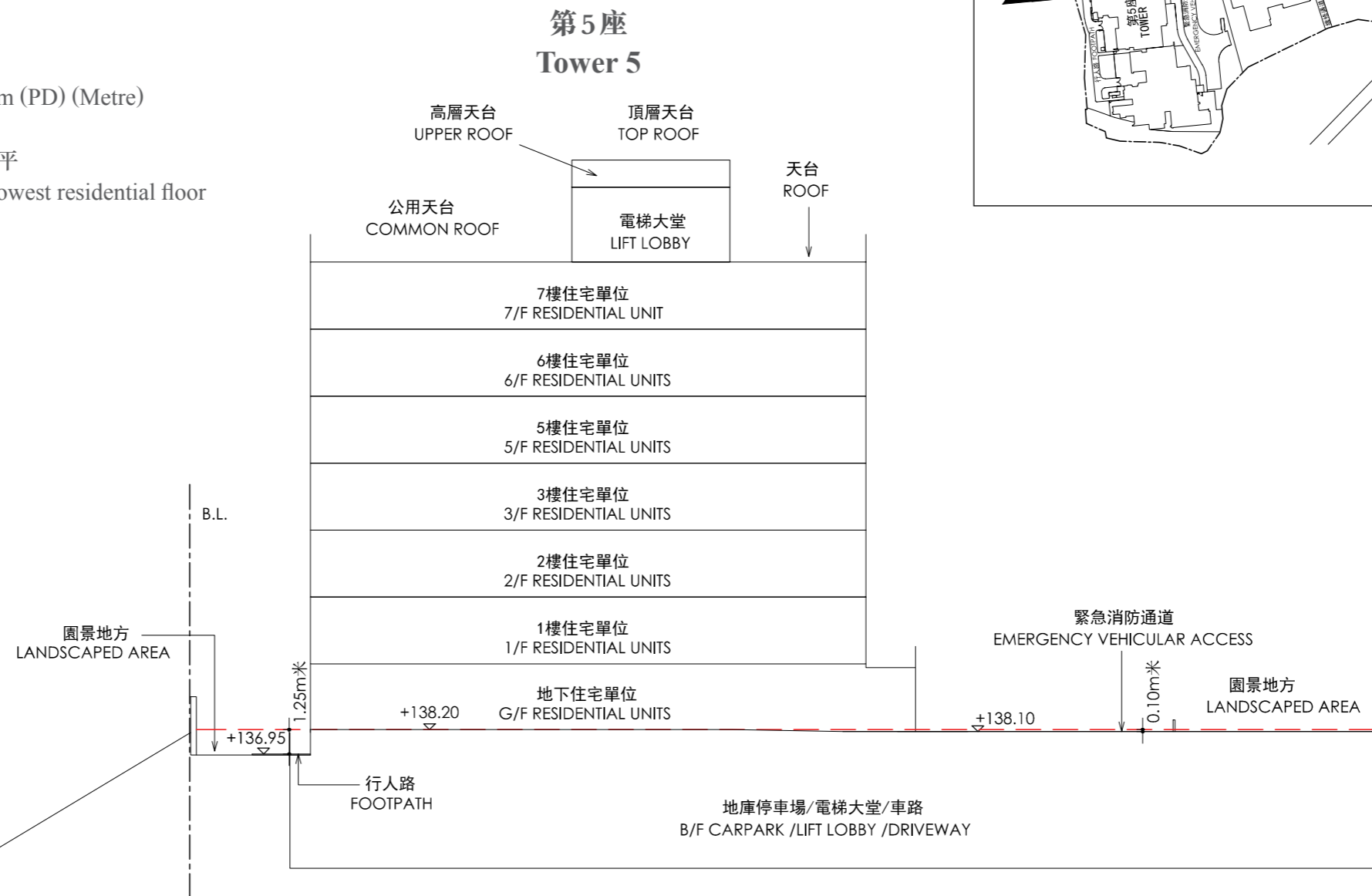
橫截面圖 5-5
Cross-section plan 5-5

毗連建築物的一段緊急消防通道為香港主水平基準以上138.10米。
The part of Emergency Vehicular Access adjacent to the building is 138.10 metres above Hong Kong Principal Datum (HKPD).

毗連建築物的一段行人路為香港主水平基準以上136.95米。
The part of footpath adjacent to the building is 136.95 metres above Hong Kong Principal Datum (HKPD).



索引圖
Key Plan



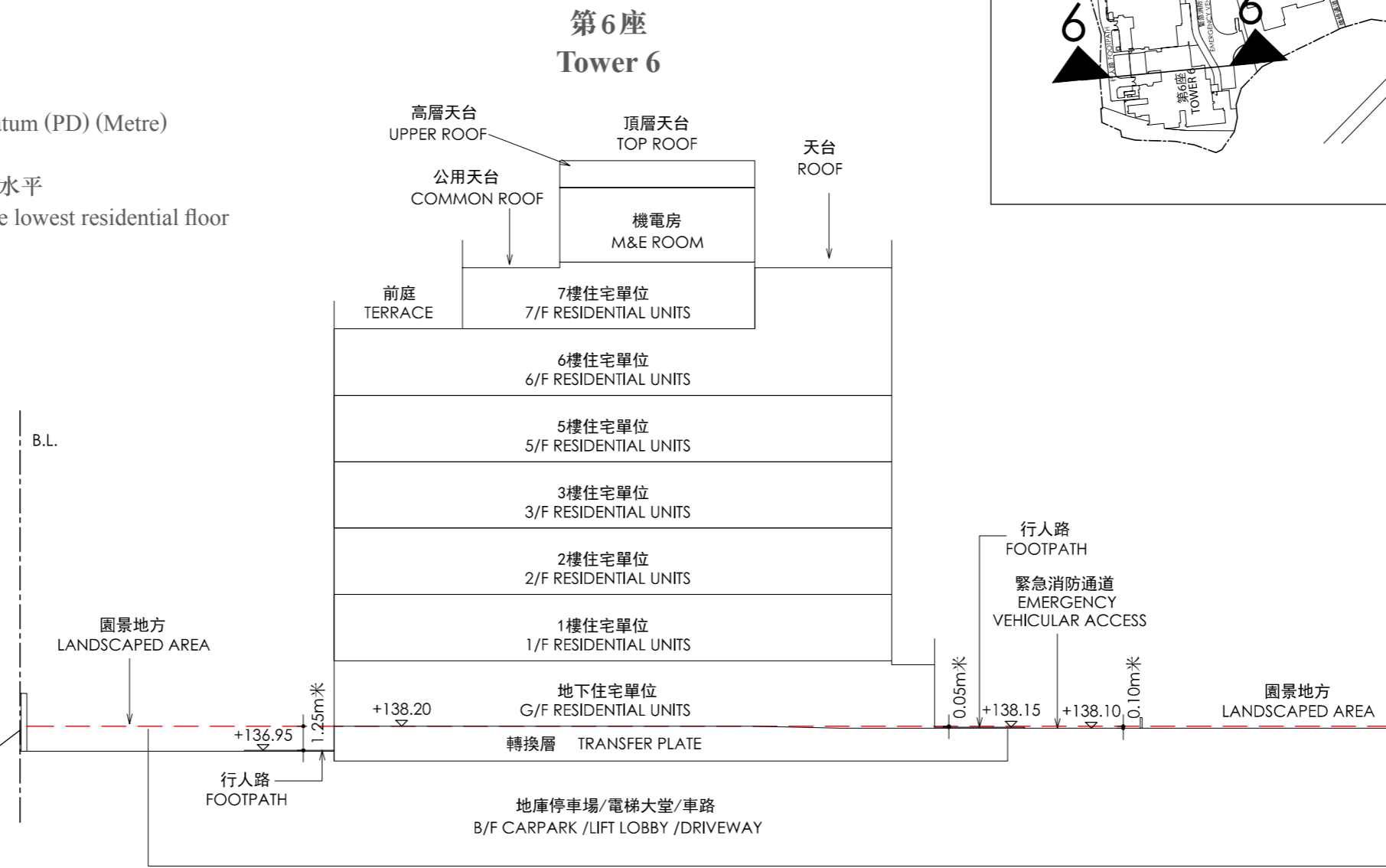
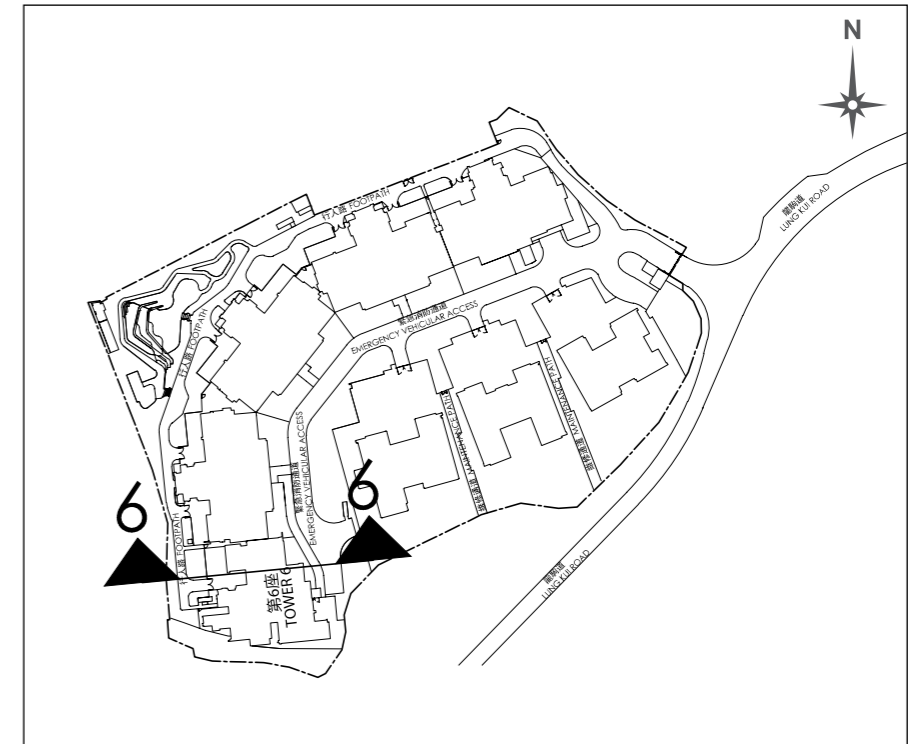
橫截面圖 6-6
Cross-section plan 6-6

毗連建築物的一段緊急消防通道為香港主水平基準以上138.10米。
The part of Emergency Vehicular Access adjacent to the building is 138.10 metres above Hong Kong Principal Datum (HKPD).

毗連建築物的一段行人路為香港主水平基準以上136.95米及138.15米。
The part of footpath adjacent to the building is 136.95 metres and 138.15 metres above Hong Kong Principal Datum (HKPD).

- 發展項目的界線(B.L.)
Boundary Line of the Development
- ▽ 香港主水平基準以上高度(米)
Height above the Hong Kong Principal Datum (PD) (Metre)
- 虛線為最低住宅樓層水平
Dotted line denotes the lowest residential floor

索引圖
Key Plan

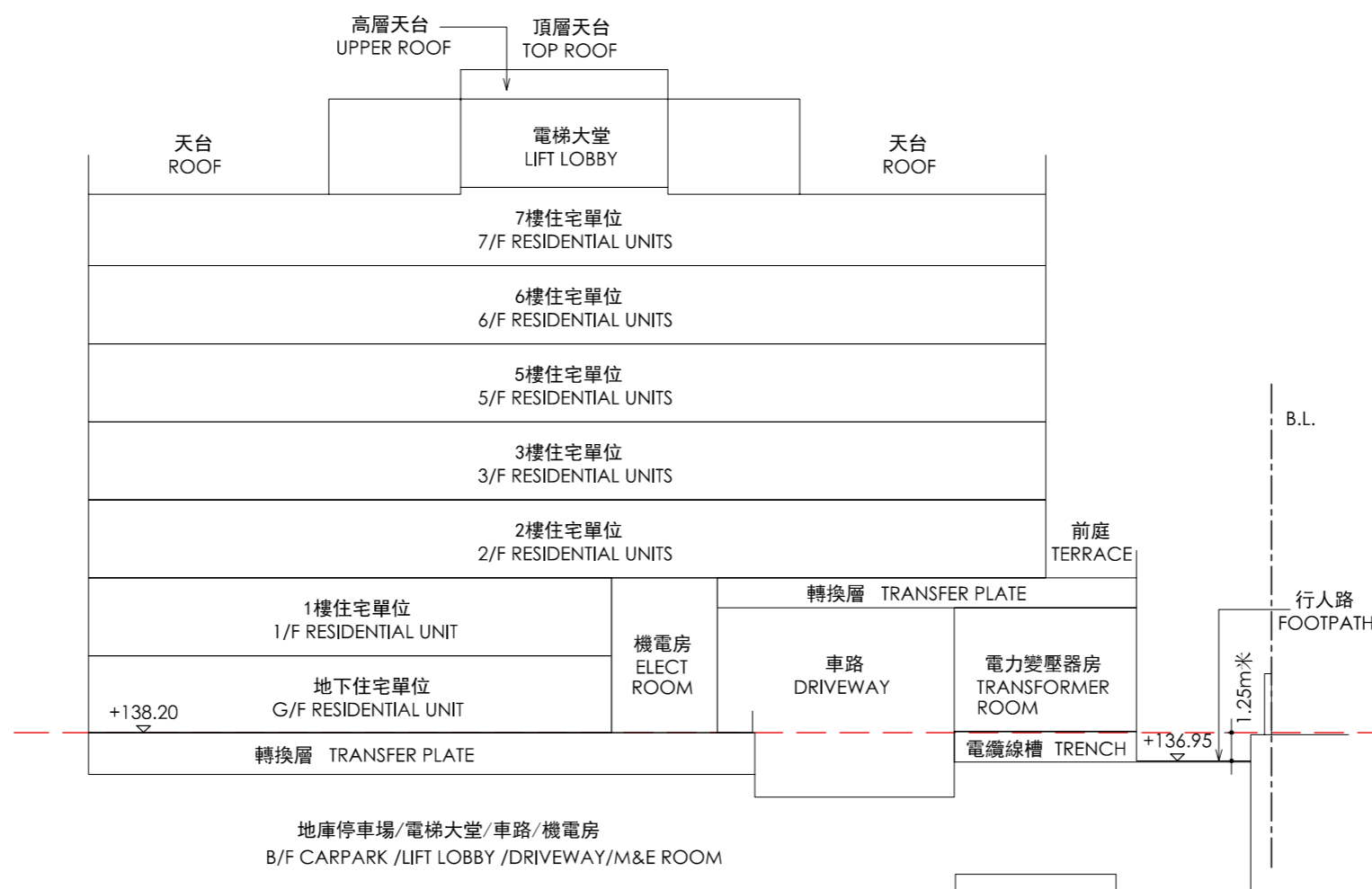


橫截面圖 7-7
Cross-section plan 7-7

毗連建築物的一段行人路為香港主水平基準以上136.95米。
The part of footpath adjacent to the building is 136.95 metres above Hong Kong Principal Datum (HKPD).

- 發展項目的界線(B.L.)
Boundary Line of the Development
- ▽ 香港主水平基準以上高度(米)
Height above the Hong Kong Principal Datum (PD) (Metre)
- 虛線為最低住宅樓層水平
Dotted line denotes the lowest residential floor

第1座
Tower 1



索引圖
Key Plan

