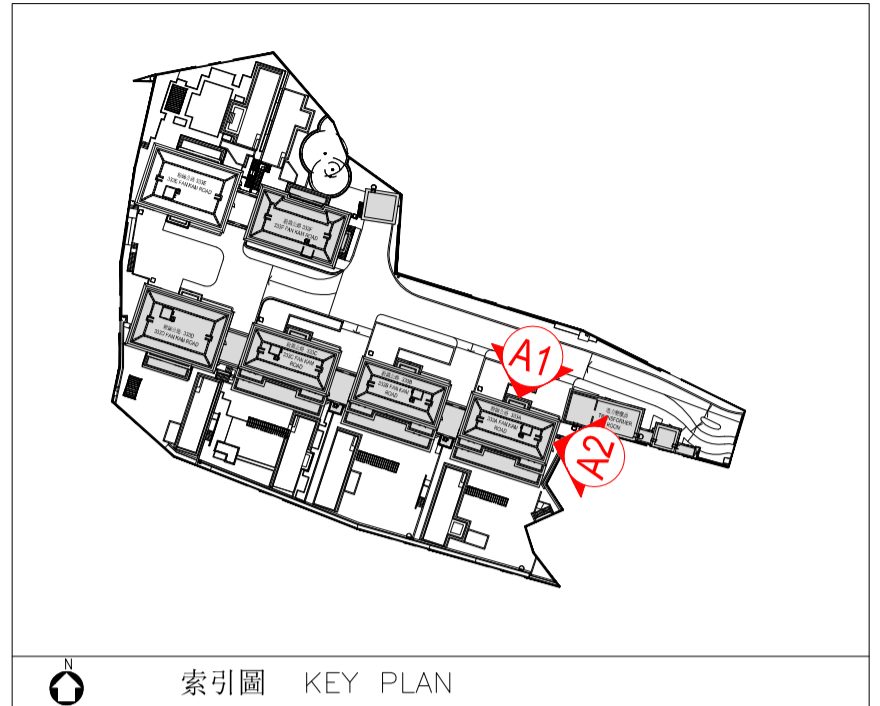


333A Fan Kam Road  
粉錦公路333A



ELEVATION PLAN A1  
立面圖 A1

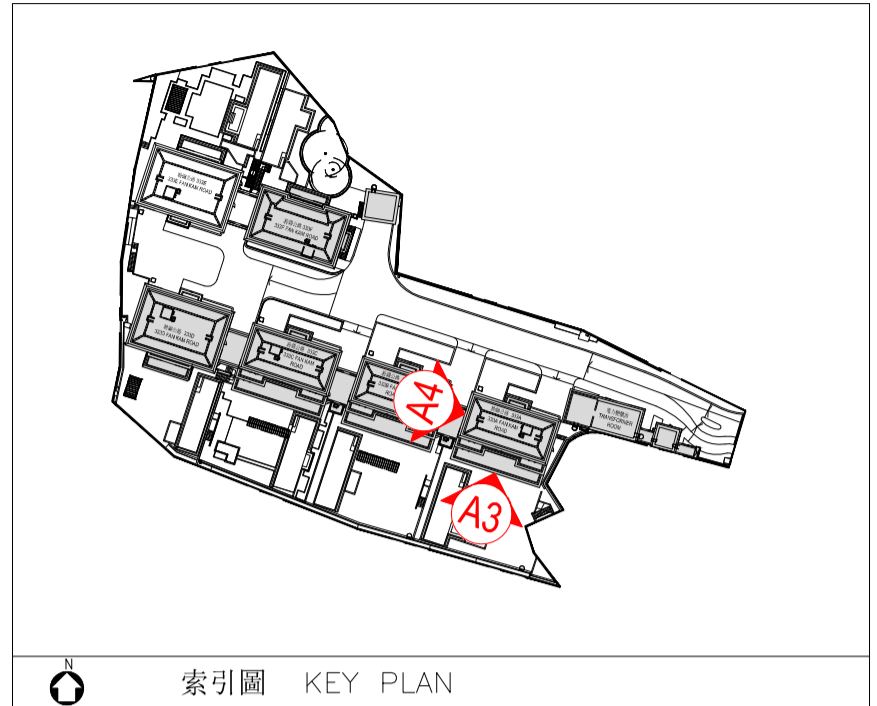


ELEVATION PLAN A2  
立面圖 A2

Authorized Person for the Phase certified that the elevations shown on this plan:  
(a) are prepared on the basis of the approved building plans for Phase 1 of the Development as of 10 May 2019; and  
(b) are in general accordance with the outward appearance of Phase 1 of the Development.

期數的認可人士證明本圖顯示的立面:  
(1) 以2019年5月10日的情況為準的發展項目第一期的經批准的建築圖則為基礎擬備; 及  
(2) 大致上與發展項目第一期的外觀一致。

333A Fan Kam Road  
粉錦公路333A



ELEVATION PLAN A3  
立面圖 A3



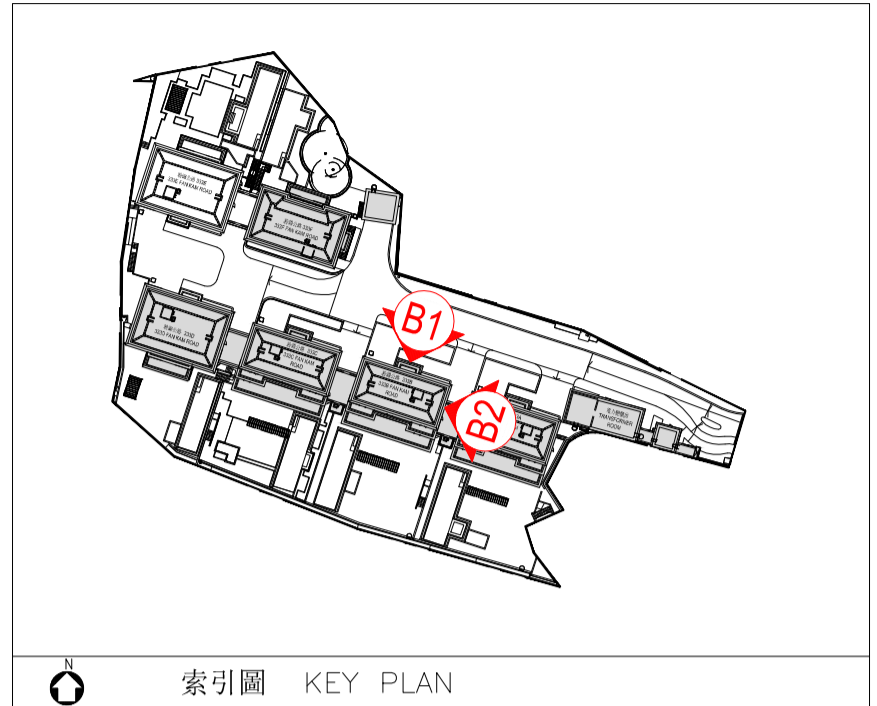
ELEVATION PLAN A4  
立面圖 A4

Authorized Person for the Phase certified that the elevations shown on this plan:  
(a) are prepared on the basis of the approved building plans for Phase 1 of the Development as of 10 May 2019; and  
(b) are in general accordance with the outward appearance of Phase 1 of the Development.

期數的認可人士證明本圖顯示的立面:  
(1) 以2019年5月10日的情況為準的發展項目第一期的經批准的建築圖則為基礎擬備；及  
(2) 大致上與發展項目第一期的外觀一致。

Elevation Plan  
立面圖

333B Fan Kam Road  
粉錦公路333B



ELEVATION PLAN B1  
立面圖 B1



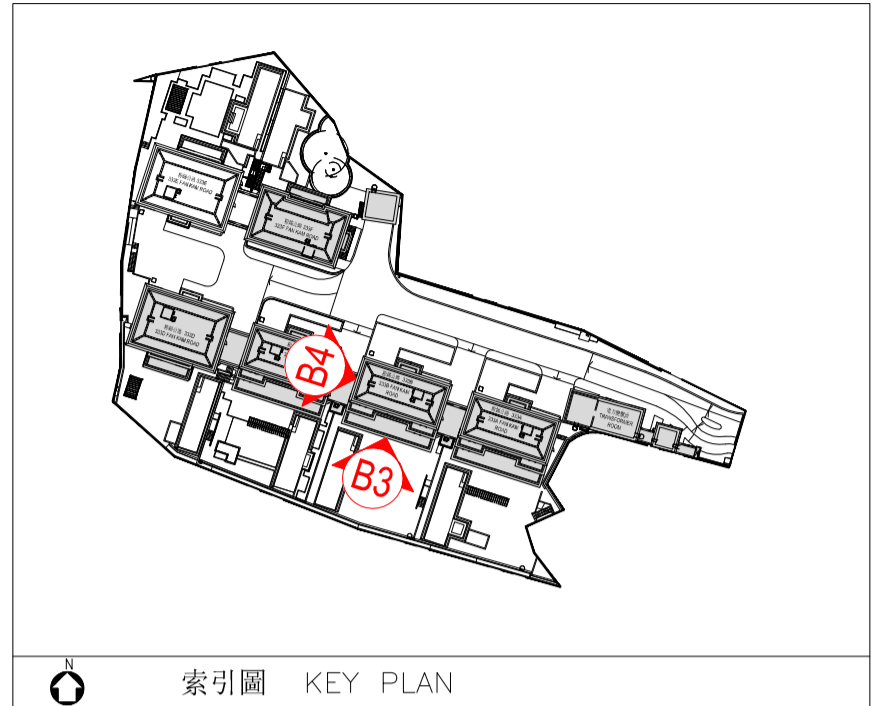
ELEVATION PLAN B2  
立面圖 B2

Authorized Person for the Phase certified that the elevations shown on this plan:  
(a) are prepared on the basis of the approved building plans for Phase 1 of the Development as of 10 May 2019; and  
(b) are in general accordance with the outward appearance of Phase 1 of the Development.

期數的認可人士證明本圖顯示的立面:  
(1) 以2019年5月10日的情況為準的發展項目第一期的經批准的建築圖則為基礎擬備；及  
(2) 大致上與發展項目第一期的外觀一致。

Elevation Plan  
立面圖

333B Fan Kam Road  
粉錦公路333B



ELEVATION PLAN B3  
立面圖 B3



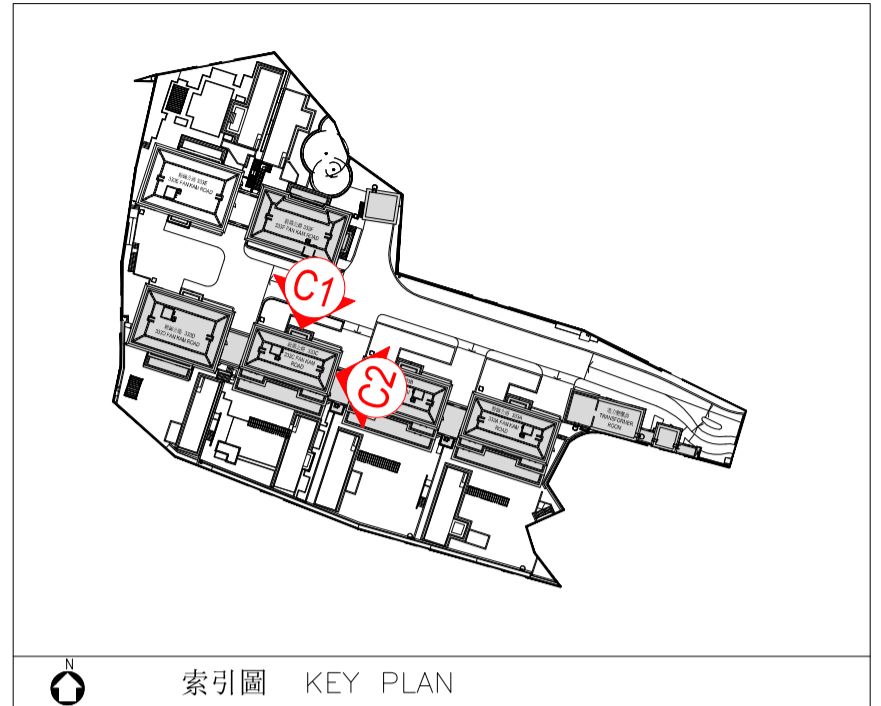
ELEVATION PLAN B4  
立面圖 B4

Authorized Person for the Phase certified that the elevations shown on this plan:  
(a) are prepared on the basis of the approved building plans for Phase 1 of the Development as of 10 May 2019; and  
(b) are in general accordance with the outward appearance of Phase 1 of the Development.

期數的認可人士證明本圖顯示的立面:  
(1) 以2019年5月10日的情況為準的發展項目第一期的經批准的建築圖則為基礎擬備；及  
(2) 大致上與發展項目第一期的外觀一致。

Elevation Plan  
立面圖

333C Fan Kam Road  
粉錦公路333C



ELEVATION PLAN C1  
立面圖 C1



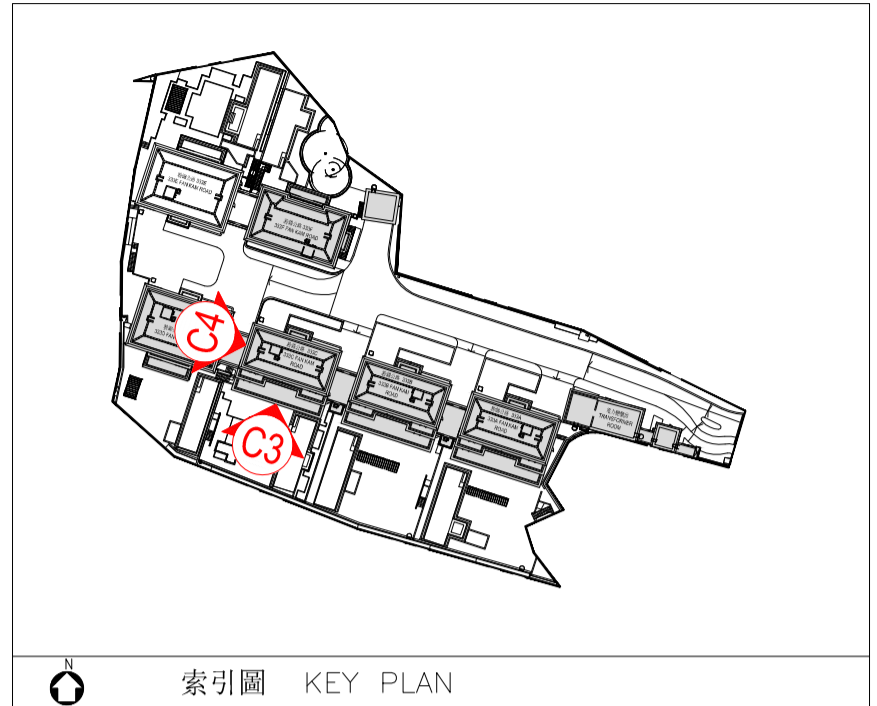
ELEVATION PLAN C2  
立面圖 C2

Authorized Person for the Phase certified that the elevations shown on this plan:  
(a) are prepared on the basis of the approved building plans for Phase 1 of the Development as of 10 May 2019; and  
(b) are in general accordance with the outward appearance of Phase 1 of the Development.

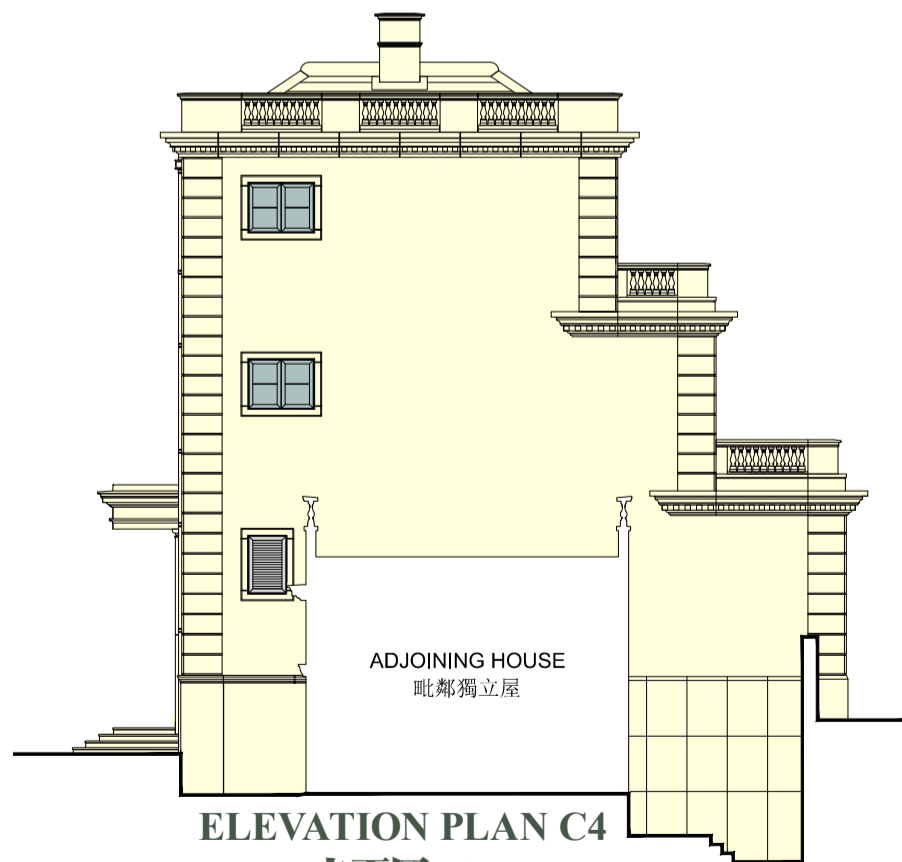
期數的認可人士證明本圖顯示的立面:  
(1) 以2019年5月10日的情況為準的發展項目第一期的經批准的建築圖則為基礎擬備；及  
(2) 大致上與發展項目第一期的外觀一致。

Elevation Plan  
立面圖

333C Fan Kam Road  
粉錦公路333C



ELEVATION PLAN C3  
立面圖 C3



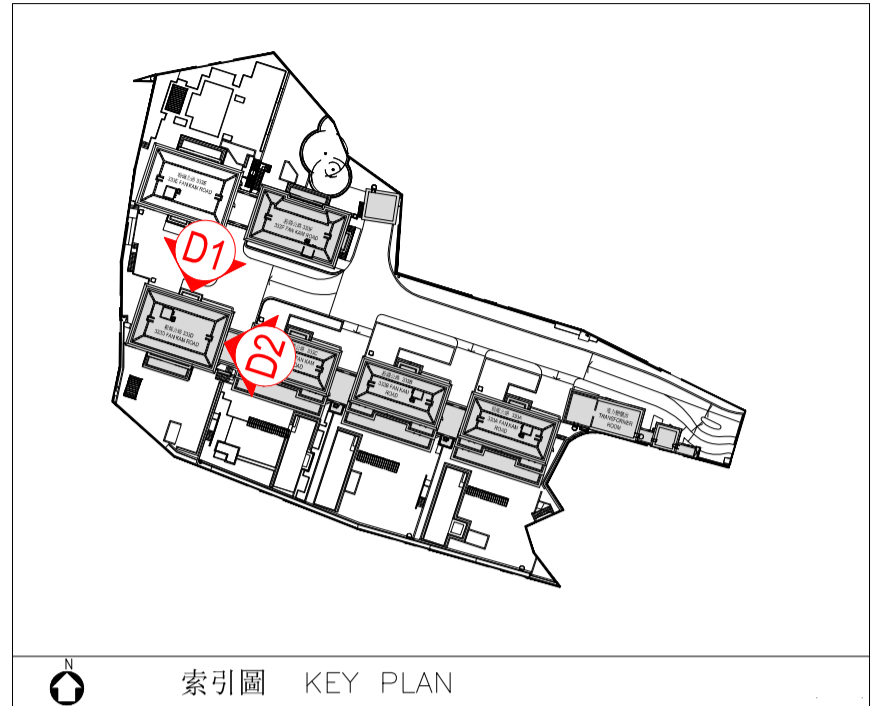
ELEVATION PLAN C4  
立面圖 C4

Authorized Person for the Phase certified that the elevations shown on this plan:  
(a) are prepared on the basis of the approved building plans for Phase 1 of the Development as of 10 May 2019; and  
(b) are in general accordance with the outward appearance of Phase 1 of the Development.

期數的認可人士證明本圖顯示的立面:  
(1) 以2019年5月10日的情況為準的發展項目第一期的經批准的建築圖則為基礎擬備；及  
(2) 大致上與發展項目第一期的外觀一致。

Elevation Plan  
立面圖

333D Fan Kam Road  
粉錦公路333D



ELEVATION PLAN D1  
立面圖 D1



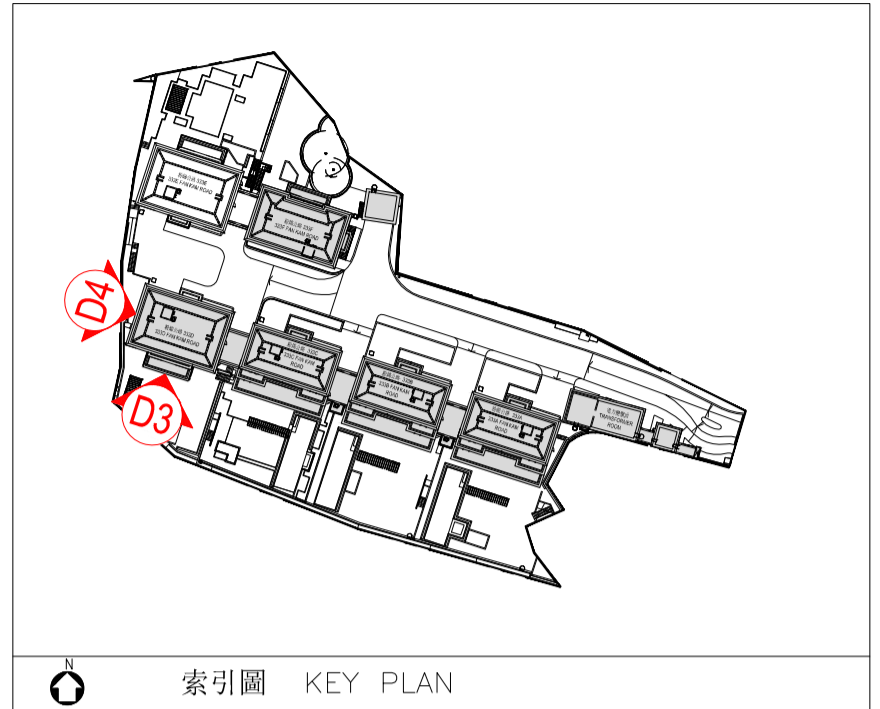
ELEVATION PLAN D2  
立面圖 D2

Authorized Person for the Phase certified that the elevations shown on this plan:  
(a) are prepared on the basis of the approved building plans for Phase 1 of the Development as of 16 July 2019; and  
(b) are in general accordance with the outward appearance of Phase 1 of the Development.

期數的認可人士證明本圖顯示的立面:  
(1) 以2019年7月16日的情況為準的發展項目第一期的經批准的建築圖則為基礎擬備；及  
(2) 大致上與發展項目第一期的外觀一致。

Elevation Plan  
立面圖

333D Fan Kam Road  
粉錦公路333D



ELEVATION PLAN D3  
立面圖 D3



ELEVATION PLAN D4  
立面圖 D4

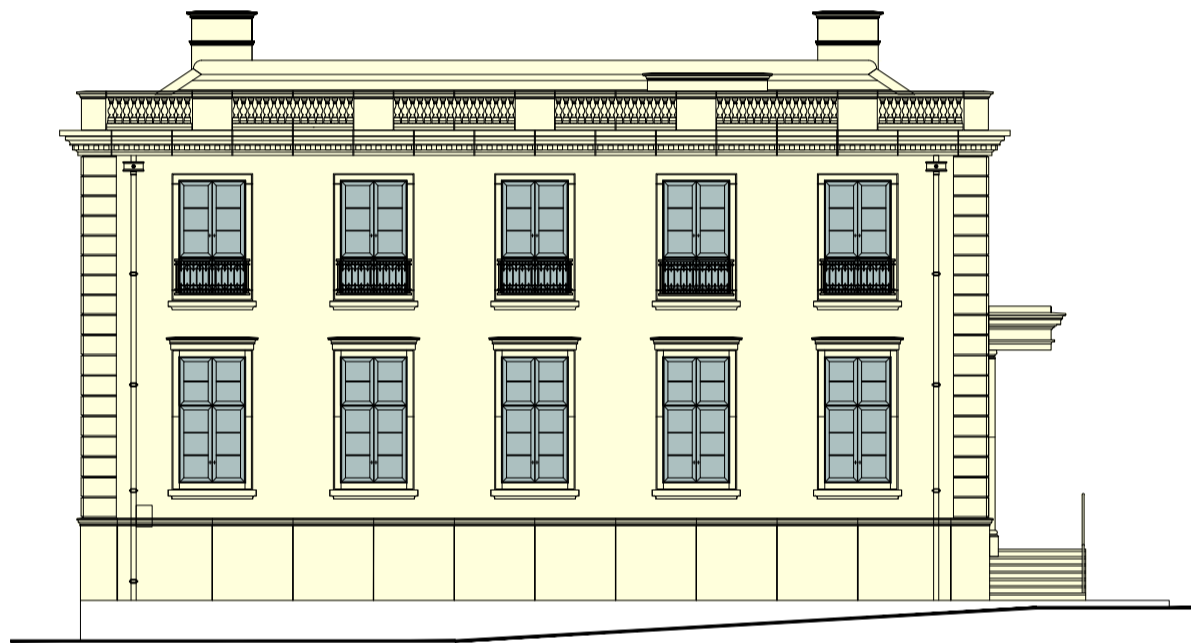
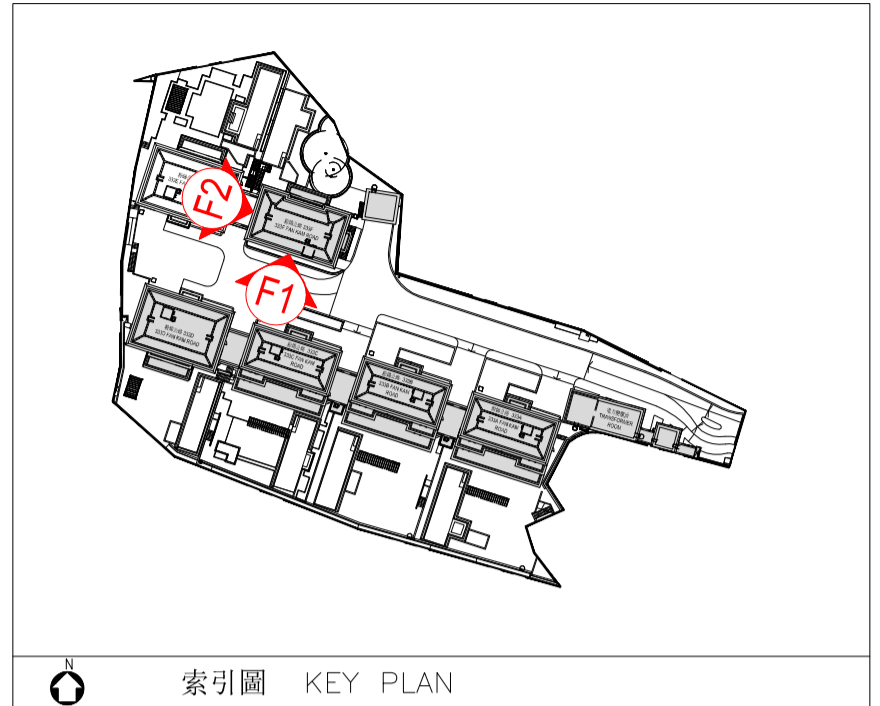
Authorized Person for the Phase certified that the elevations shown on this plan:  
(a) are prepared on the basis of the approved building plans for Phase 1 of the Development as of 16 July 2019; and  
(b) are in general accordance with the outward appearance of Phase 1 of the Development.

期數的認可人士證明本圖顯示的立面:  
(1) 以2019年7月16日的情況為準的發展項目第一期的經批准的建築圖則為基礎擬備；及  
(2) 大致上與發展項目第一期的外觀一致。

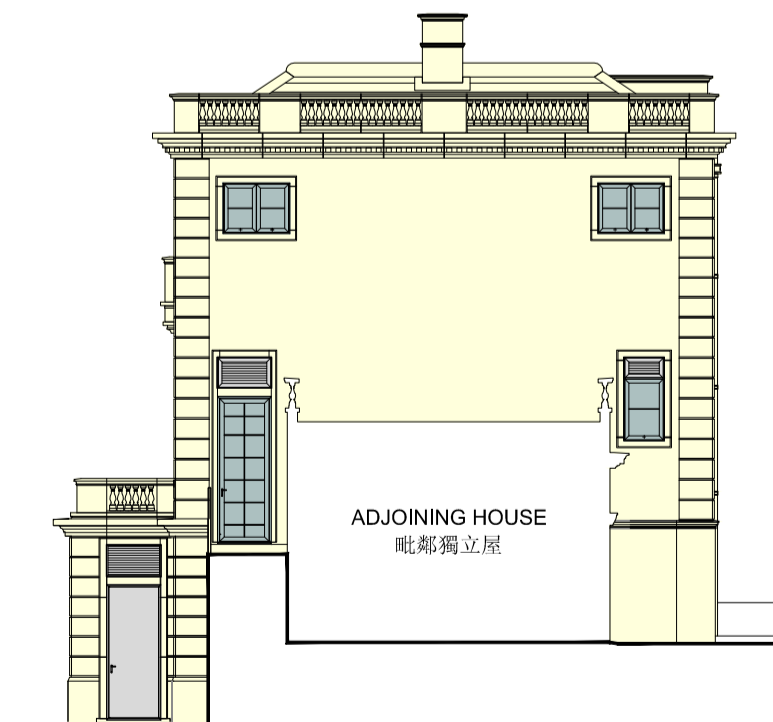


Elevation Plan  
立面圖

333F Fan Kam Road  
粉錦公路333F



ELEVATION PLAN F1  
立面圖 F1

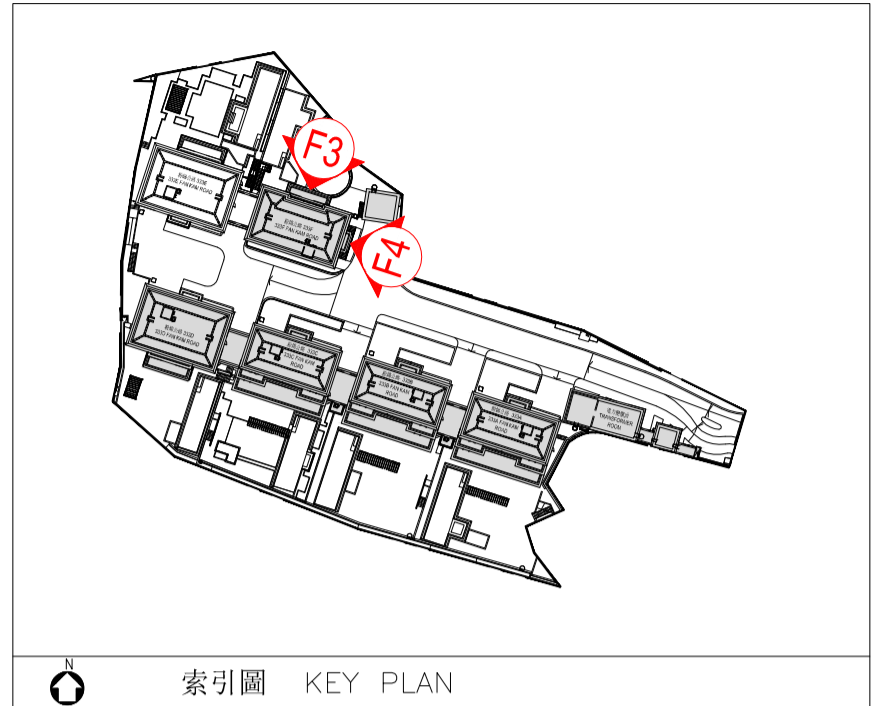


ELEVATION PLAN F2  
立面圖 F2

Authorized Person for the Phase certified that the elevations shown on this plan:  
(a) are prepared on the basis of the approved building plans for Phase 1 of the Development as of 10 May 2019; and  
(b) are in general accordance with the outward appearance of Phase 1 of the Development.

期數的認可人士證明本圖顯示的立面:  
(1) 以2019年5月10日的情況為準的發展項目第一期的經批准的建築圖則為基礎擬備; 及  
(2) 大致上與發展項目第一期的外觀一致。

333F Fan Kam Road  
粉錦公路333F



ELEVATION PLAN F3  
立面圖 F3

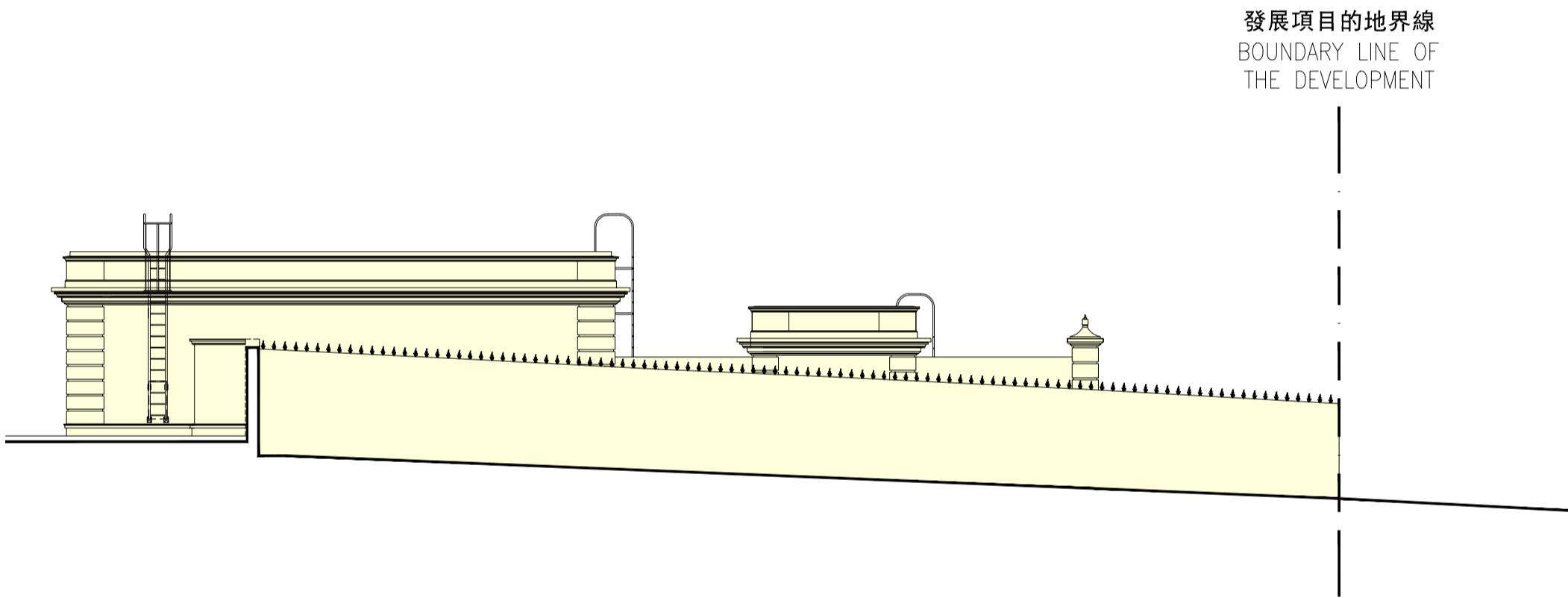
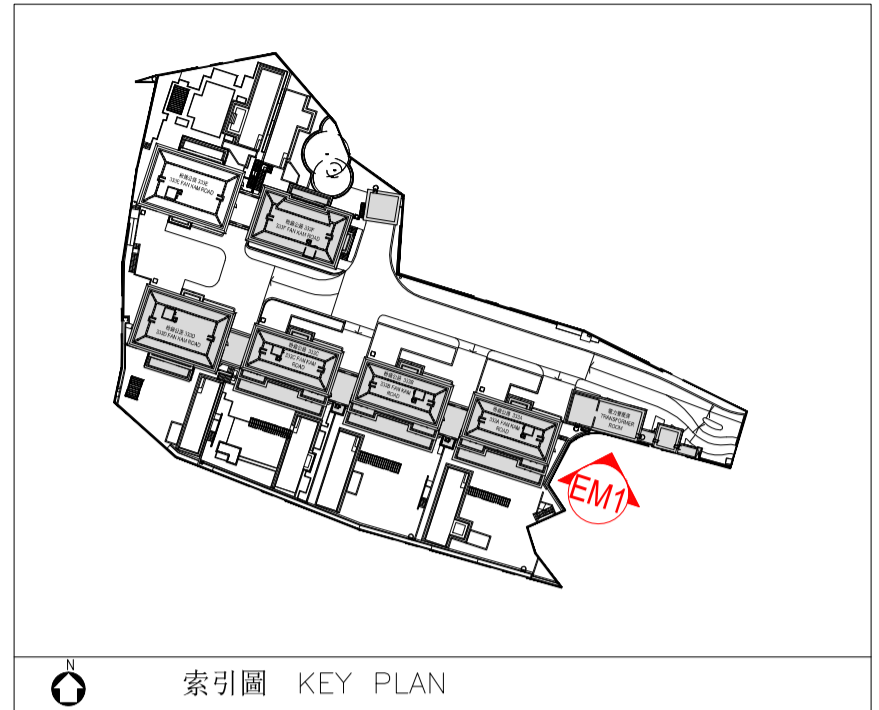


ELEVATION PLAN F4  
立面圖 F4

Authorized Person for the Phase certified that the elevations shown on this plan:  
(a) are prepared on the basis of the approved building plans for Phase 1 of the Development as of 10 May 2019; and  
(b) are in general accordance with the outward appearance of Phase 1 of the Development.

期數的認可人士證明本圖顯示的立面:  
(1) 以2019年5月10日的情況為準的發展項目第一期的經批准的建築圖則為基礎擬備；及  
(2) 大致上與發展項目第一期的外觀一致。

**E&M BLOCK**  
**機電樓房**

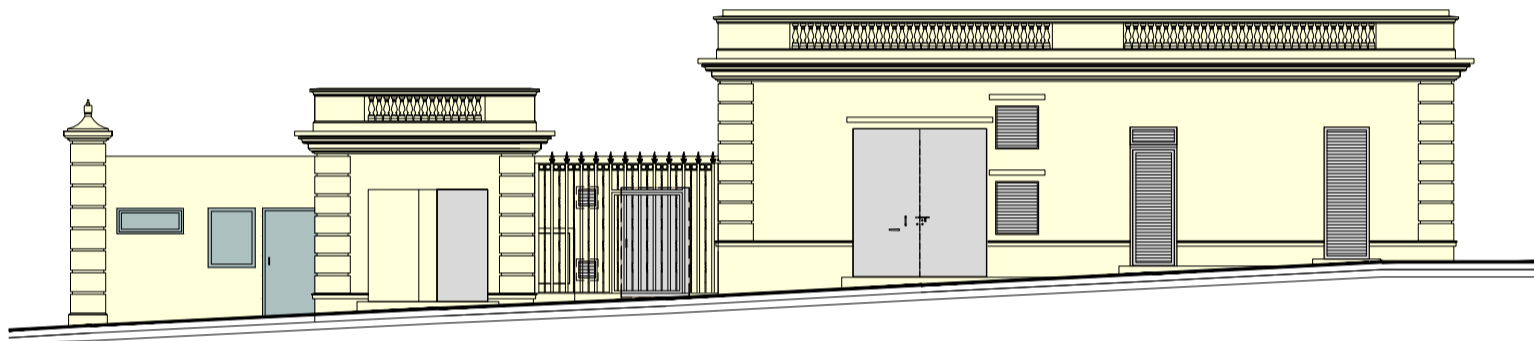
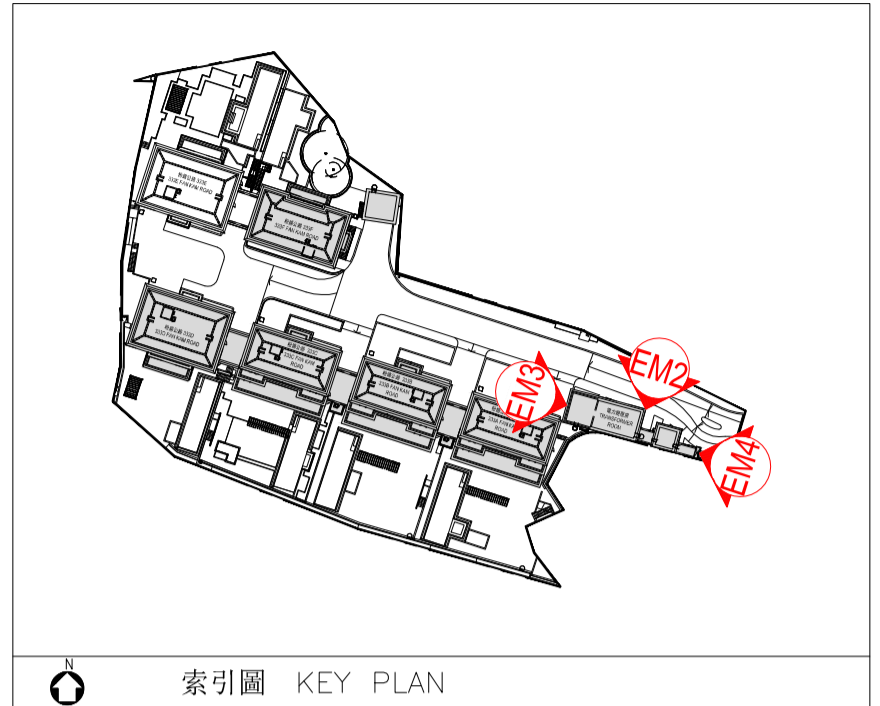


**ELEVATION PLAN EM1**  
**立面圖 EM1**

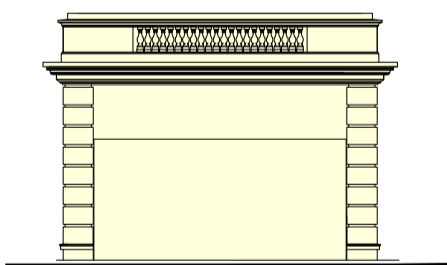
Authorized Person for the Phase certified that the elevations shown on this plan:  
(a) are prepared on the basis of the approved building plans for Phase 1 of the Development as of 16 July 2019; and  
(b) are in general accordance with the outward appearance of Phase 1 of the Development.

期數的認可人士證明本圖顯示的立面:  
(1) 以2019年7月16日的情況為準的發展項目第一期的經批准的建築圖則為基礎擬備；及  
(2) 大致上與發展項目第一期的外觀一致。

**E&M BLOCK**  
**機電樓房**

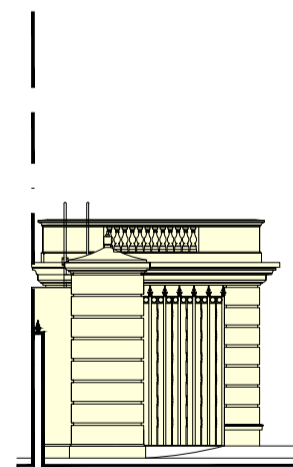


**ELEVATION PLAN EM2**  
**立面圖 EM2**



**ELEVATION PLAN EM3**  
**立面圖 EM3**

發展項目的地界線  
BOUNDARY LINE OF  
THE DEVELOPMENT



**ELEVATION PLAN EM4**  
**立面圖 EM4**

Authorized Person for the Phase certified that the elevations shown on this plan:  
(a) are prepared on the basis of the approved building plans for Phase 1 of the Development as of 16 July 2019; and  
(b) are in general accordance with the outward appearance of Phase 1 of the Development.

期數的認可人士證明本圖顯示的立面:  
(1) 以2019年7月16日的情況為準的發展項目第一期的經批准的建築圖則為基礎擬備; 及  
(2) 大致上與發展項目第一期的外觀一致。