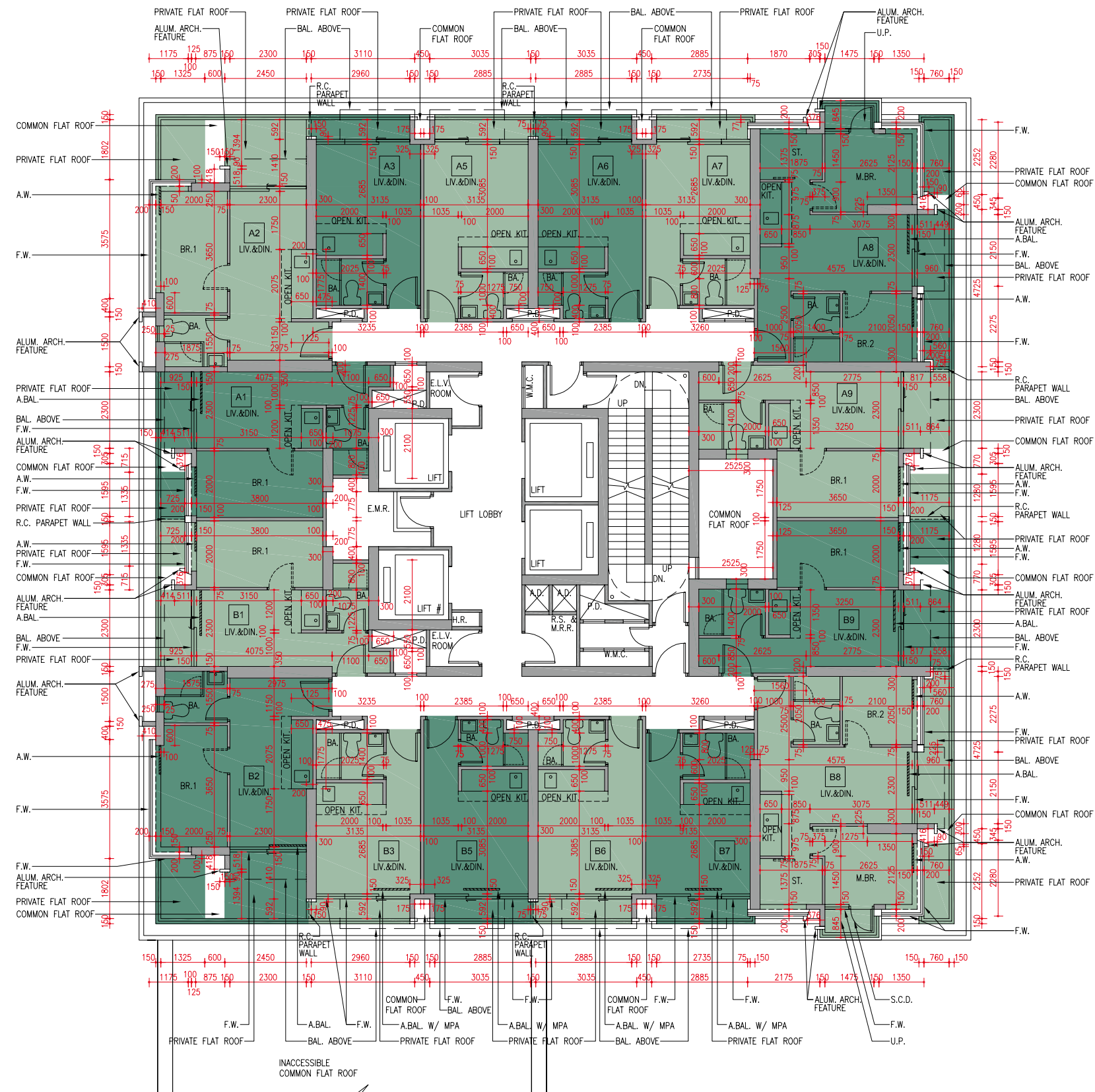


# FLOOR PLANS OF RESIDENTIAL PROPERTIES IN THE DEVELOPMENT

## 發展項目的住宅物業的樓面平面圖

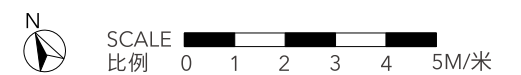
Tower 1  
第1座

2/F  
2樓



# Designated exclusive lift to Residential Recreational Facilities with only 2 landing buttons for upward and downward landing access between the G/F and 1/F (i.e. with no upward landing access to Tower 1 2/F - 38/F). Downward Lift call services by residents from Tower 1 2/F - 38/F is available with landing access restricted to Residential Recreational Facilities G/F and 1/F only.

# 指定專屬予住宅康樂設施之升降機，僅設兩個層站按鈕供地下與1樓間上落停靠出入（即不可上升至第1座2樓至38樓停靠出入）。設召喚升降機下行服務予第1座2樓至38樓住客，停靠出入層僅限地下和1樓住宅康樂設施。



# FLOOR PLANS OF RESIDENTIAL PROPERTIES IN THE DEVELOPMENT

## 發展項目的住宅物業的樓面平面圖

### Tower 1 第1座

Tower 座數	Floor 樓層	Flat 單位	Thickness of the floor slabs (excluding plaster) of each residential property (mm) 每個住宅物業的樓板 (不包括灰泥) 的厚度 (毫米)	Floor-to-floor height (refers to the height between the top surface of the structural slab of a floor and the top surface of the structural slab of its immediate upper floor) of each residential property (mm) 每個住宅物業的層與層之間的高度 (指該樓層之石屎地台面與上一層石屎地台面之高度距離) (毫米)
Tower 1 第1座	2/F 2樓	A1	150	3500, 3500 <sup>□</sup> , 3650 <sup>□</sup> , 3925 <sup>□</sup> , 4000 <sup>□</sup>
		A2	150, 225	3150, 3500, 3500 <sup>□</sup> , 3650 <sup>□</sup> , 3925 <sup>□</sup> , 4000 <sup>□</sup>
		A3	150	3100, 3250, 3500, 3500 <sup>□</sup> , 3650 <sup>□</sup> , 3750 <sup>□</sup> , 3925 <sup>□</sup> , 4000 <sup>□</sup>
		A5	150	3000, 3100, 3250, 3500, 3500 <sup>□</sup> , 3650 <sup>□</sup> , 3750 <sup>□</sup> , 3925 <sup>□</sup> , 4000 <sup>□</sup>
		A6	150	3000, 3100, 3250, 3500, 3500 <sup>□</sup> , 3650 <sup>□</sup> , 3750 <sup>□</sup> , 3925 <sup>□</sup> , 4000 <sup>□</sup>
		A7	150	3100, 3250, 3500, 3500 <sup>□</sup> , 3650 <sup>□</sup> , 3750 <sup>□</sup> , 3925 <sup>□</sup> , 4000 <sup>□</sup>
		A8	150	3500, 3500 <sup>□</sup> , 3650 <sup>□</sup> , 3750 <sup>□</sup> , 3925 <sup>□</sup> , 4000 <sup>□</sup>
		A9	150	3500, 3500 <sup>□</sup> , 3925 <sup>□</sup> , 4000 <sup>□</sup>

Tower 座數	Floor 樓層	Flat 單位	Thickness of the floor slabs (excluding plaster) of each residential property (mm) 每個住宅物業的樓板 (不包括灰泥) 的厚度 (毫米)	Floor-to-floor height (refers to the height between the top surface of the structural slab of a floor and the top surface of the structural slab of its immediate upper floor) of each residential property (mm) 每個住宅物業的層與層之間的高度 (指該樓層之石屎地台面與上一層石屎地台面之高度距離) (毫米)
Tower 1 第1座	2/F 2樓	B1	150	3500, 3500 <sup>□</sup> , 3650 <sup>□</sup> , 3925 <sup>□</sup> , 4000 <sup>□</sup>
		B2	150, 225	3150, 3500, 3500 <sup>□</sup> , 3650 <sup>□</sup> , 3925 <sup>□</sup> , 4000 <sup>□</sup>
		B3	150	3100, 3250, 3500, 3500 <sup>□</sup> , 3650 <sup>□</sup> , 3750 <sup>□</sup> , 3925 <sup>□</sup> , 4000 <sup>□</sup>
		B5	150	3000, 3100, 3250, 3500, 3500 <sup>□</sup> , 3650 <sup>□</sup> , 3750 <sup>□</sup> , 3925 <sup>□</sup> , 4000 <sup>□</sup>
		B6	150	3000, 3100, 3250, 3500, 3500 <sup>□</sup> , 3650 <sup>□</sup> , 3750 <sup>□</sup> , 3925 <sup>□</sup> , 4000 <sup>□</sup>
		B7	150	3100, 3250, 3500, 3500 <sup>□</sup> , 3650 <sup>□</sup> , 3750 <sup>□</sup> , 3925 <sup>□</sup> , 4000 <sup>□</sup>
		B8	150	3500, 3500 <sup>□</sup> , 3650 <sup>□</sup> , 3750 <sup>□</sup> , 3925 <sup>□</sup> , 4000 <sup>□</sup>
		B9	150	3500, 3500 <sup>□</sup> , 3925 <sup>□</sup> , 4000 <sup>□</sup>

□ Inclusive of the sunken depth of the sunken slab on the floor of this floor (500mm) 包括本層地台跌級樓板之跌級深度 (500 毫米)

The internal areas of the residential properties on the upper floors will generally be slightly larger than those on the lower floors because of the reducing thickness of the structural walls on the upper floors (Note: This statement as required under section 10(2)(e) of Part 1 of Schedule 1 to the Residential Properties (First-hand Sales) Ordinance is not applicable to the Development). 因住宅物業的較高樓層的結構牆的厚度遞減，較高樓層的內部面積，一般比較低樓層的內部面積稍大(備註：此根據《一手住宅物業銷售條例》附表1第1部第10(2)(e)條規定之陳述並不適用於本發展項目)。

#### Remarks :

- (1) According to Special Condition No.(8)(d) of the Land Grant, the minimum number of residential units in the Development is 666.
  - (2) According to Special Condition No.(43) of the Land Grant, except with the prior written consent of the Director of Lands, the owners shall not carry out or permit or suffer to be carried out any works in connection with any residential unit erected or to be erected on the lot, including but not limited to demolition or alteration of any partition wall or any floor or roof slab or any partition structure, which shall result in such unit being internally linked to and accessible from any adjoining or adjacent residential unit erected or to be erected on the lot. The decision of the Director of Lands as to what constitutes works resulting in a unit being internally linked to and accessible from any adjoining or adjacent residential unit shall be final and binding on the owners.
  - (3) Clause 8.7 of the Deed of Mutual Covenant and Management Agreement of the Development provides that: "Record of consent on linking or merging of Flats. The Manager shall deposit in the management office the record provided by the Director of Lands of the information relating to the consent given under the Land Grant for inspection by all Owners free of costs and for taking copies at their own expense and on payment of a reasonable charge, all charges received to be credited to the Special Fund".
  - (4) A total number of 1,556 residential units are provided in the Development.
- The dimensions in the floor plans are all structural dimensions in millimetre and rounded off to the nearest integer.
  - Please refer to the first page of this section for legend of the terms and abbreviations shown in the floor plan.

#### 備註：

- (1) 根據批地文件特別條件第(8)(d)條，發展項目住宅單位數目最少為666個。
  - (2) 根據批地文件特別條件第(43)條，除非獲地政總署署長事先書面同意，業主不得進行或容許或容受進行任何與地段內已建或將建之任何住宅單位有關連而會導致該住宅單位與地段內已建或將建之任何毗連或鄰近住宅單位內部相通及可從該毗連或鄰近住宅單位進出的工程(包括但不限於任何分隔牆、任何地板或天花板或任何間隔構築物的拆除或改動)。地政總署署長就何等工程構成會導致單位與任何毗連或鄰近單位內部相通及可從該毗連或鄰近單位進出之工程一事之決定屬終局決定及對業主有約束力。
  - (3) 發展項目公契第8.7條訂明：「連結或結合住宅單位同意之紀錄。管理人須在管理處備存由地政總署署長提供與在批地文件下批出之同意有關的資訊的紀錄。所有業主可免費查閱上述備存的紀錄，亦可自費繳付合理費用後索取副本，所有費用收取後須撥入特別基金。」
  - (4) 發展項目共提供1,556個住宅單位。
- 樓面平面圖之尺規所列數字為以毫米標示之建築結構尺寸，並以四捨五入至整數。
  - 平面圖中顯示之名詞及簡稱之圖例請參閱本節之首頁。

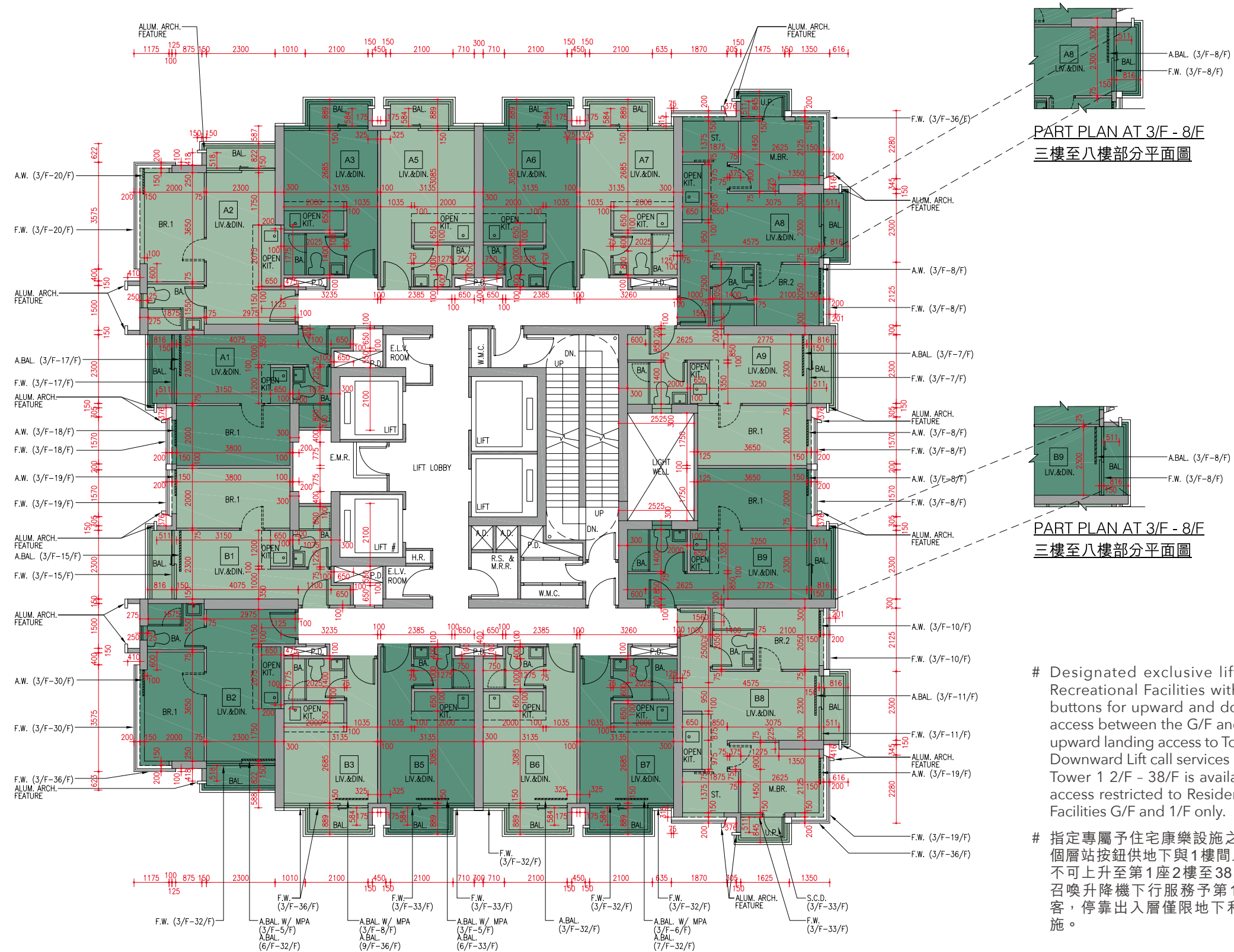


# FLOOR PLANS OF RESIDENTIAL PROPERTIES IN THE DEVELOPMENT

## 發展項目的住宅物業的樓面平面圖

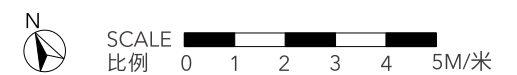
Tower 1  
第1座

3/F, 5/F - 12/F, 15/F - 23/F, 25/F - 33/F and 35/F - 36/F (4/F, 13/F, 14/F, 24/F and 34/F are omitted)  
3樓、5樓至12樓、15樓至23樓、25樓至33樓及35樓至36樓（不設4樓、13樓、14樓、24樓及34樓）



# Designated exclusive lift to Residential Recreational Facilities with only 2 landing buttons for upward and downward landing access between the G/F and 1/F (i.e. with no upward landing access to Tower 1 2/F - 38/F). Downward Lift call services by residents from Tower 1 2/F - 38/F is available with landing access restricted to Residential Recreational Facilities G/F and 1/F only.

# 指定專屬予住宅康樂設施之升降機，僅設兩個層站按鈕供地下與1樓間上落停靠出入（即不可上升至第1座2樓至38樓停靠出入）。設召喚升降機下行服務予第1座2樓至38樓住客，停靠出入層僅限地下和1樓住宅康樂設施。



# FLOOR PLANS OF RESIDENTIAL PROPERTIES IN THE DEVELOPMENT

## 發展項目的住宅物業的樓面平面圖

### Tower 1 第1座

Tower 座數	Floor 樓層	Flat 單位	Thickness of the floor slabs (excluding plaster) of each residential property (mm) 每個住宅物業的樓板 (不包括灰泥) 的厚度 (毫米)	Floor-to-floor height (refers to the height between the top surface of the structural slab of a floor and the top surface of the structural slab of its immediate upper floor) of each residential property (mm) 每個住宅物業的層與層之間的高度 (指該樓層之石屎地台面與上一層石屎地台面之高度距離) (毫米)
Tower 1 第1座	3/F, 5/F - 12/F, 15/F - 23/F, 25/F - 33/F and 35/F (4/F, 13/F, 14/F, 24/F and 34/F are omitted)	A1	150	3475, 3475 <sup>◇</sup> , 3475 <sup>☆</sup> , 3475 <sup>□</sup>
		A2	150, 225	3475, 3475 <sup>◇</sup> , 3475 <sup>☆</sup> , 3475 <sup>□</sup>
		A3	150	3475, 3475 <sup>◇</sup> , 3475 <sup>◎</sup> , 3475 <sup>☆</sup> , 3475 <sup>△</sup> , 3475 <sup>□</sup>
		A5	150	3475, 3475 <sup>◇</sup> , 3475 <sup>◎</sup> , 3475 <sup>☆</sup> , 3475 <sup>△</sup> , 3475 <sup>□</sup>
		A6	150	3475, 3475 <sup>◇</sup> , 3475 <sup>◎</sup> , 3475 <sup>☆</sup> , 3475 <sup>△</sup> , 3475 <sup>□</sup>
		A7	150	3475, 3475 <sup>◇</sup> , 3475 <sup>◎</sup> , 3475 <sup>☆</sup> , 3475 <sup>△</sup> , 3475 <sup>□</sup>
		A8	150	3475, 3475 <sup>◇</sup> , 3475 <sup>◎</sup> , 3475 <sup>☆</sup> , 3475 <sup>□</sup>
		A9	150	3475, 3475 <sup>◇</sup> , 3475 <sup>□</sup>
		B1	150	3475, 3475 <sup>◇</sup> , 3475 <sup>☆</sup> , 3475 <sup>□</sup>
	B2	150, 225	3475, 3475 <sup>◇</sup> , 3475 <sup>☆</sup> , 3475 <sup>□</sup>	
	B3	150	3475, 3475 <sup>◇</sup> , 3475 <sup>◎</sup> , 3475 <sup>☆</sup> , 3475 <sup>△</sup> , 3475 <sup>□</sup>	
	B5	150	3475, 3475 <sup>◇</sup> , 3475 <sup>◎</sup> , 3475 <sup>☆</sup> , 3475 <sup>△</sup> , 3475 <sup>□</sup>	
	B6	150	3475, 3475 <sup>◇</sup> , 3475 <sup>◎</sup> , 3475 <sup>☆</sup> , 3475 <sup>△</sup> , 3475 <sup>□</sup>	
	B7	150	3475, 3475 <sup>◇</sup> , 3475 <sup>◎</sup> , 3475 <sup>☆</sup> , 3475 <sup>△</sup> , 3475 <sup>□</sup>	
	B8	150	3475, 3475 <sup>◇</sup> , 3475 <sup>◎</sup> , 3475 <sup>☆</sup> , 3475 <sup>□</sup>	
B9	150	3475, 3475 <sup>◇</sup> , 3475 <sup>□</sup>		

Tower 座數	Floor 樓層	Flat 單位	Thickness of the floor slabs (excluding plaster) of each residential property (mm) 每個住宅物業的樓板 (不包括灰泥) 的厚度 (毫米)	Floor-to-floor height (refers to the height between the top surface of the structural slab of a floor and the top surface of the structural slab of its immediate upper floor) of each residential property (mm) 每個住宅物業的層與層之間的高度 (指該樓層之石屎地台面與上一層石屎地台面之高度距離) (毫米)
Tower 1 第1座	36/F 36樓	A1	150	3500, 3500 <sup>◇</sup> , 3500 <sup>☆</sup> , 3500 <sup>□</sup>
		A2	150, 225	3500, 3500 <sup>◇</sup> , 3500 <sup>☆</sup> , 3500 <sup>□</sup>
		A3	150	3500, 3500 <sup>◇</sup> , 3500 <sup>◎</sup> , 3500 <sup>☆</sup> , 3500 <sup>△</sup> , 3500 <sup>□</sup>
		A5	150	3500, 3500 <sup>◇</sup> , 3500 <sup>◎</sup> , 3500 <sup>☆</sup> , 3500 <sup>△</sup> , 3500 <sup>□</sup>
		A6	150, 225	3000, 3075 <sup>◇</sup> , 3150, 3350 <sup>☆</sup> , 3425, 3500, 3575 <sup>◇</sup> , 3750 <sup>◎</sup> , 3775 <sup>☆</sup> , 3850 <sup>☆</sup> , 3900 <sup>△</sup> , 3925 <sup>□</sup> , 4000 <sup>□</sup>
		A7	150, 225	3500, 3575 <sup>◇</sup> , 3750 <sup>◎</sup> , 3850 <sup>☆</sup> , 3900 <sup>△</sup> , 4000 <sup>□</sup>
		A8	150	3500, 3575 <sup>◇</sup> , 3750 <sup>◎</sup> , 3850 <sup>☆</sup> , 4000 <sup>□</sup>
		A9	150	3000, 3075 <sup>◇</sup> , 3150, 3500, 3500 <sup>□</sup> , 3575 <sup>◇</sup> , 4000 <sup>□</sup>
		B1	150	3500, 3500 <sup>◇</sup> , 3500 <sup>☆</sup> , 3500 <sup>□</sup>
		B2	150, 225	3500, 3500 <sup>◇</sup> , 3500 <sup>☆</sup> , 3500 <sup>□</sup>
		B3	150	3500, 3500 <sup>◇</sup> , 3500 <sup>◎</sup> , 3500 <sup>☆</sup> , 3500 <sup>△</sup> , 3500 <sup>□</sup>
		B5	150	3500, 3500 <sup>◇</sup> , 3500 <sup>◎</sup> , 3500 <sup>☆</sup> , 3500 <sup>△</sup> , 3500 <sup>□</sup>
		B6	150, 225	3000, 3075 <sup>◇</sup> , 3150, 3350 <sup>☆</sup> , 3425, 3500, 3575 <sup>◇</sup> , 3750 <sup>◎</sup> , 3775 <sup>☆</sup> , 3850 <sup>☆</sup> , 3900 <sup>△</sup> , 3925 <sup>□</sup> , 4000 <sup>□</sup>
		B7	150, 225	3500, 3575 <sup>◇</sup> , 3750 <sup>◎</sup> , 3850 <sup>☆</sup> , 3900 <sup>△</sup> , 4000 <sup>□</sup>
		B8	150	3500, 3575 <sup>◇</sup> , 3750 <sup>◎</sup> , 3850 <sup>☆</sup> , 4000 <sup>□</sup>
B9	150	3000, 3075 <sup>◇</sup> , 3150, 3500, 3500 <sup>□</sup> , 3575 <sup>◇</sup> , 4000 <sup>□</sup>		

- ◇ Inclusive of the sunken depth of the sunken slab on the floor of this floor (75mm) 包括本層地台跌級樓板之跌級深度 (75 毫米)  
 ◎ Inclusive of the sunken depth of the sunken slab on the floor of this floor (250mm) 包括本層地台跌級樓板之跌級深度 (250 毫米)  
 ☆ Inclusive of the sunken depth of the sunken slab on the floor of this floor (350mm) 包括本層地台跌級樓板之跌級深度 (350 毫米)  
 △ Inclusive of the sunken depth of the sunken slab on the floor of this floor (400mm) 包括本層地台跌級樓板之跌級深度 (400 毫米)  
 □ Inclusive of the sunken depth of the sunken slab on the floor of this floor (500mm) 包括本層地台跌級樓板之跌級深度 (500 毫米)

The internal areas of the residential properties on the upper floors will generally be slightly larger than those on the lower floors because of the reducing thickness of the structural walls on the upper floors (Note: This statement as required under section 10(2)(e) of Part 1 of Schedule 1 to the Residential Properties (First-hand Sales) Ordinance is not applicable to the Development).  
 因住宅物業的較高樓層的結構牆的厚度遞減，較高樓層的內部面積，一般比較低樓層的內部面積稍大(備註：此根據《一手住宅物業銷售條例》附表1第1部第10(2)(e)條規定之陳述並不適用於本發展項目)。

#### Remarks :

- (1) According to Special Condition No.(8)(d) of the Land Grant, the minimum number of residential units in the Development is 666.
  - (2) According to Special Condition No.(43) of the Land Grant, except with the prior written consent of the Director of Lands, the owners shall not carry out or permit or suffer to be carried out any works in connection with any residential unit erected or to be erected on the lot, including but not limited to demolition or alteration of any partition wall or any floor or roof slab or any partition structure, which shall result in such unit being internally linked to and accessible from any adjoining or adjacent residential unit erected or to be erected on the lot. The decision of the Director of Lands as to what constitutes works resulting in a unit being internally linked to and accessible from any adjoining or adjacent residential unit shall be final and binding on the owners.
  - (3) Clause 8.7 of the Deed of Mutual Covenant and Management Agreement of the Development provides that: "Record of consent on linking or merging of Flats. The Manager shall deposit in the management office the record provided by the Director of Lands of the information relating to the consent given under the Land Grant for inspection by all Owners free of costs and for taking copies at their own expense and on payment of a reasonable charge, all charges received to be credited to the Special Fund".
  - (4) A total number of 1,556 residential units are provided in the Development.
2. The dimensions in the floor plans are all structural dimensions in millimetre and rounded off to the nearest integer.  
 3. Please refer to the first page of this section for legend of the terms and abbreviations shown in the floor plan.

#### 備註：

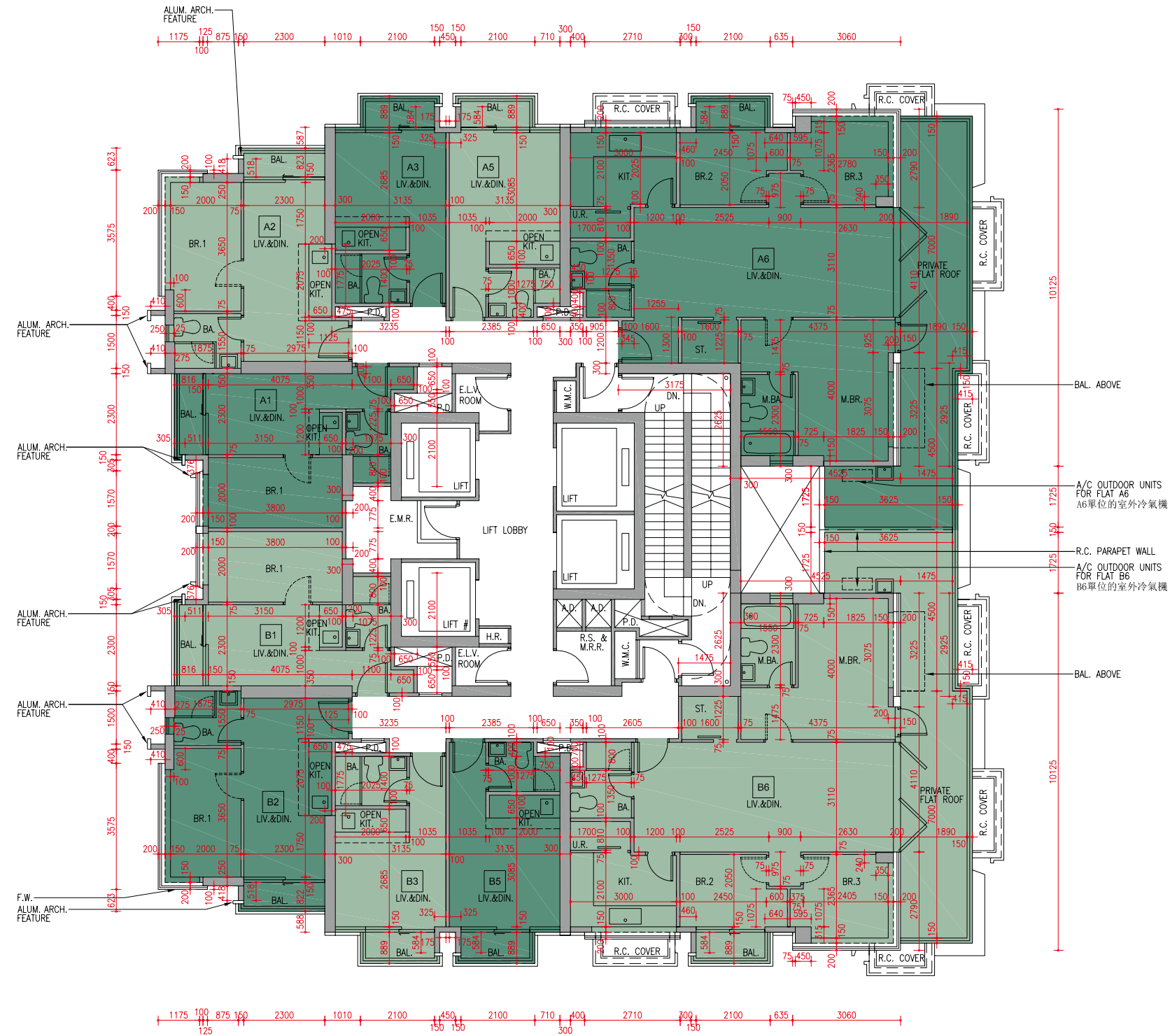
- (1) 根據批地文件特別條件第(8)(d)條，發展項目住宅單位數目最少為666個。
  - (2) 根據批地文件特別條件第(43)條，除非獲地政總署署長事先書面同意，業主不得進行或容許或容受進行任何與地段內已建或將建之任何住宅單位有關連而會導致該住宅單位與地段內已建或將建之任何毗連或鄰近住宅單位內部相通及可從該毗連或鄰近住宅單位進出的工程(包括但不限於任何分隔牆、任何地板或天花板或任何間隔構築物的拆除或改動)。地政總署署長就何等工程構成會導致單位與任何毗連或鄰近單位內部相通及可從該毗連或鄰近單位進出之工程一事之決定屬終局決定及對業主有約束力。
  - (3) 發展項目公契第8.7條訂明：「連結或結合住宅單位同意之紀錄。管理人須在管理處備存由地政總署署長提供而與在批地文件下批出之同意有關的資訊的紀錄。所有業主可免費查閱上述備存的紀錄，亦可自費繳付合理費用後索取副本，所有費用收取後須撥入特別基金。」
  - (4) 發展項目共提供1,556個住宅單位。
2. 樓面平面圖之尺規所列數字為以毫米標示之建築結構尺寸，並以四捨五入至整數。  
 3. 平面圖中顯示之名詞及簡稱之圖例請參閱本節之首頁。



# FLOOR PLANS OF RESIDENTIAL PROPERTIES IN THE DEVELOPMENT

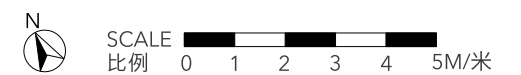
## 發展項目的住宅物業的樓面平面圖

Tower 1 37/F  
第1座 37樓



# Designated exclusive lift to Residential Recreational Facilities with only 2 landing buttons for upward and downward landing access between the G/F and 1/F (i.e. with no upward landing access to Tower 1 2/F - 38/F). Downward Lift call services by residents from Tower 1 2/F - 38/F is available with landing access restricted to Residential Recreational Facilities G/F and 1/F only.

# 指定專屬予住宅康樂設施之升降機，僅設兩個層站按鈕供地下與1樓間上落停靠出入（即不可上升至第1座2樓至38樓停靠出入）。設召喚升降機下行服務予第1座2樓至38樓住客，停靠出入層僅限地下和1樓住宅康樂設施。



# FLOOR PLANS OF RESIDENTIAL PROPERTIES IN THE DEVELOPMENT

## 發展項目的住宅物業的樓面平面圖

### Tower 1 第1座

Tower 座數	Floor 樓層	Flat 單位	Thickness of the floor slabs (excluding plaster) of each residential property (mm) 每個住宅物業的樓板 (不包括灰泥) 的厚度 (毫米)	Floor-to-floor height (refers to the height between the top surface of the structural slab of a floor and the top surface of the structural slab of its immediate upper floor) of each residential property (mm) 每個住宅物業的層與層之間的高度 (指該樓層之石屎地台面與上一層石屎地台面之高度距離) (毫米)
Tower 1 第1座	37/F 37樓	A1	150	3500, 3500 <sup>◇</sup> , 3500 <sup>★</sup> , 3500 <sup>□</sup>
		A2	150, 225	3500, 3500 <sup>◇</sup> , 3500 <sup>★</sup> , 3500 <sup>□</sup>
		A3	150	3500, 3500 <sup>◇</sup> , 3500 <sup>◎</sup> , 3500 <sup>★</sup> , 3500 <sup>△</sup> , 3500 <sup>□</sup>
		A5	150	3500, 3500 <sup>◇</sup> , 3500 <sup>◎</sup> , 3500 <sup>★</sup> , 3500 <sup>△</sup> , 3500 <sup>□</sup>
		A6	150, 225	3150, 3500, 3500 <sup>◇</sup> , 3500 <sup>★</sup> , 3850 <sup>★</sup> , 3500 <sup>□</sup>

Tower 座數	Floor 樓層	Flat 單位	Thickness of the floor slabs (excluding plaster) of each residential property (mm) 每個住宅物業的樓板 (不包括灰泥) 的厚度 (毫米)	Floor-to-floor height (refers to the height between the top surface of the structural slab of a floor and the top surface of the structural slab of its immediate upper floor) of each residential property (mm) 每個住宅物業的層與層之間的高度 (指該樓層之石屎地台面與上一層石屎地台面之高度距離) (毫米)
Tower 1 第1座	37/F 37樓	B1	150	3500, 3500 <sup>◇</sup> , 3500 <sup>★</sup> , 3500 <sup>□</sup>
		B2	150, 225	3500, 3500 <sup>◇</sup> , 3500 <sup>★</sup> , 3500 <sup>□</sup>
		B3	150	3500, 3500 <sup>◇</sup> , 3500 <sup>◎</sup> , 3500 <sup>★</sup> , 3500 <sup>△</sup> , 3500 <sup>□</sup>
		B5	150	3500, 3500 <sup>◇</sup> , 3500 <sup>◎</sup> , 3500 <sup>★</sup> , 3500 <sup>△</sup> , 3500 <sup>□</sup>
		B6	150	3150, 3500, 3500 <sup>◇</sup> , 3500 <sup>★</sup> , 3850 <sup>★</sup> , 3500 <sup>□</sup>

- ◇ Inclusive of the sunken depth of the sunken slab on the floor of this floor (75mm) 包括本層地台跌級樓板之跌級深度 (75 毫米)  
 ◎ Inclusive of the sunken depth of the sunken slab on the floor of this floor (250mm) 包括本層地台跌級樓板之跌級深度 (250 毫米)  
 ★ Inclusive of the sunken depth of the sunken slab on the floor of this floor (350mm) 包括本層地台跌級樓板之跌級深度 (350 毫米)  
 △ Inclusive of the sunken depth of the sunken slab on the floor of this floor (400mm) 包括本層地台跌級樓板之跌級深度 (400 毫米)  
 □ Inclusive of the sunken depth of the sunken slab on the floor of this floor (500mm) 包括本層地台跌級樓板之跌級深度 (500 毫米)

The internal areas of the residential properties on the upper floors will generally be slightly larger than those on the lower floors because of the reducing thickness of the structural walls on the upper floors (Note: This statement as required under section 10(2)(e) of Part 1 of Schedule 1 to the Residential Properties (First-hand Sales) Ordinance is not applicable to the Development).  
 因住宅物業的較高樓層的結構牆的厚度遞減，較高樓層的內部面積，一般比較低樓層的內部面積稍大(備註：此根據《一手住宅物業銷售條例》附表1第1部第10(2)(e)條規定之陳述並不適用於本發展項目)。

#### Remarks :

- (1) According to Special Condition No.(8)(d) of the Land Grant, the minimum number of residential units in the Development is 666.
  - (2) According to Special Condition No.(43) of the Land Grant, except with the prior written consent of the Director of Lands, the owners shall not carry out or permit or suffer to be carried out any works in connection with any residential unit erected or to be erected on the lot, including but not limited to demolition or alteration of any partition wall or any floor or roof slab or any partition structure, which shall result in such unit being internally linked to and accessible from any adjoining or adjacent residential unit erected or to be erected on the lot. The decision of the Director of Lands as to what constitutes works resulting in a unit being internally linked to and accessible from any adjoining or adjacent residential unit shall be final and binding on the owners.
  - (3) Clause 8.7 of the Deed of Mutual Covenant and Management Agreement of the Development provides that: "Record of consent on linking or merging of Flats. The Manager shall deposit in the management office the record provided by the Director of Lands of the information relating to the consent given under the Land Grant for inspection by all Owners free of costs and for taking copies at their own expense and on payment of a reasonable charge, all charges received to be credited to the Special Fund".
  - (4) A total number of 1,556 residential units are provided in the Development.
- The dimensions in the floor plans are all structural dimensions in millimetre and rounded off to the nearest integer.
  - Please refer to the first page of this section for legend of the terms and abbreviations shown in the floor plan.

#### 備註：

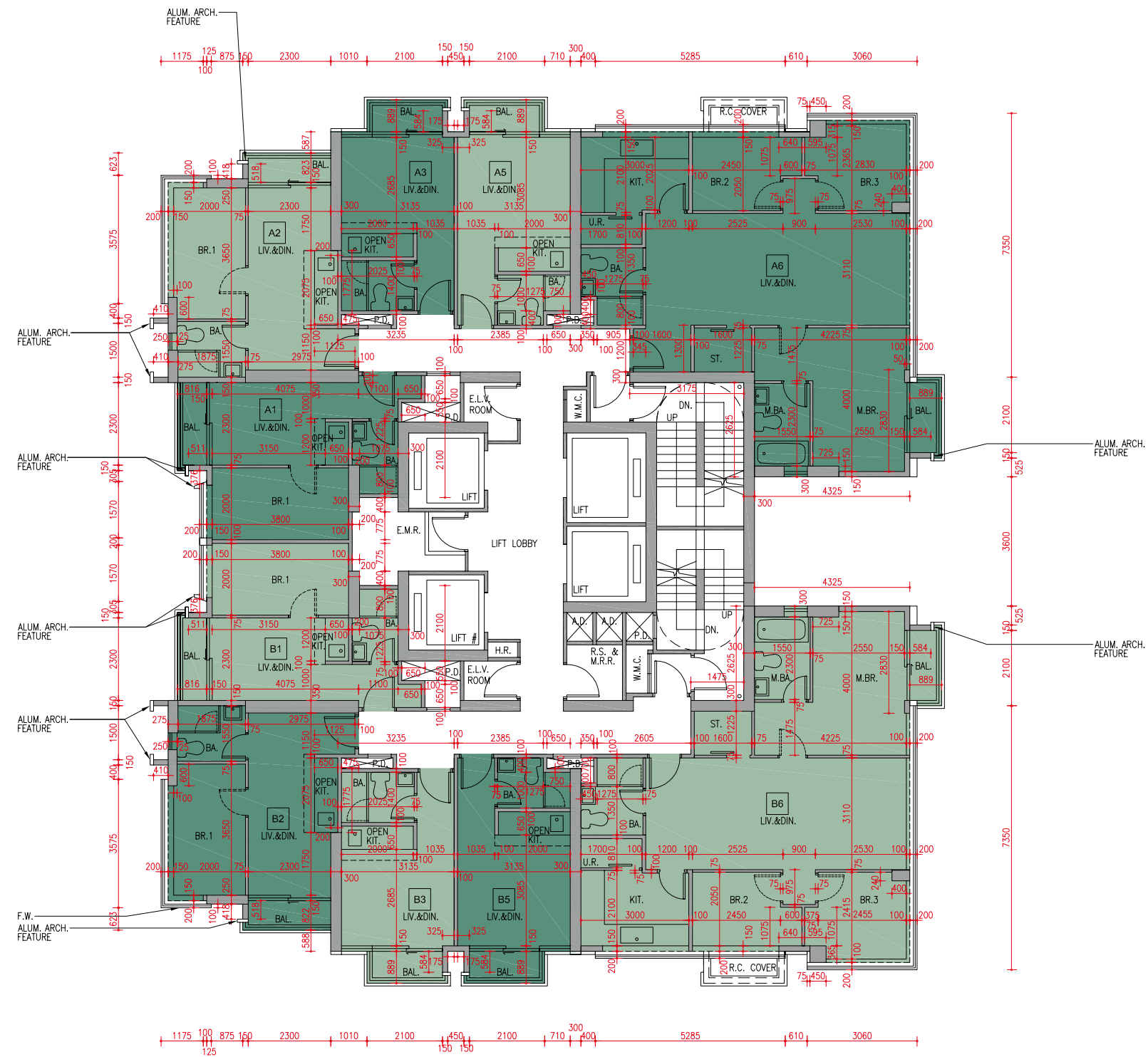
- (1) 根據批地文件特別條件第(8)(d)條，發展項目住宅單位數目最少為666個。
  - (2) 根據批地文件特別條件第(43)條，除非獲地政總署署長事先書面同意，業主不得進行或容許或容受進行任何與地段內已建或將建之任何住宅單位有關連而會導致該住宅單位與地段內已建或將建之任何毗連或鄰近住宅單位內部相通及可從該毗連或鄰近住宅單位進出的工程(包括但不限於任何分隔牆、任何地板或天花板或任何間隔構築物的拆除或改動)。地政總署署長就何等工程構成會導致單位與任何毗連或鄰近單位內部相通及可從該毗連或鄰近單位進出之工程一事之決定屬終局決定及對業主有約束力。
  - (3) 發展項目公契第8.7條訂明：「連結或結合住宅單位同意之紀錄。管理人須在管理處備存由地政總署署長提供而與在批地文件下批出之同意有關的資訊的紀錄。所有業主可免費查閱上述備存的紀錄，亦可自費繳付合理費用後索取副本，所有費用收取後須撥入特別基金。」
  - (4) 發展項目共提供1,556個住宅單位。
- 樓面平面圖之尺規所列數字為以毫米標示之建築結構尺寸，並以四捨五入至整數。
  - 平面圖中顯示之名詞及簡稱之圖例請參閱本節之首頁。

# FLOOR PLANS OF RESIDENTIAL PROPERTIES IN THE DEVELOPMENT

## 發展項目的住宅物業的樓面平面圖

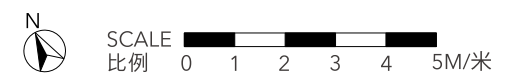
Tower 1  
第1座

38/F  
38樓



# Designated exclusive lift to Residential Recreational Facilities with only 2 landing buttons for upward and downward landing access between the G/F and 1/F (i.e. with no upward landing access to Tower 1 2/F - 38/F). Downward Lift call services by residents from Tower 1 2/F - 38/F is available with landing access restricted to Residential Recreational Facilities G/F and 1/F only.

# 指定專屬予住宅康樂設施之升降機，僅設兩個層站按鈕供地下與1樓間上落停靠出入（即不可上升至第1座2樓至38樓停靠出入）。設召喚升降機下行服務予第1座2樓至38樓住客，停靠出入層僅限地下和1樓住宅康樂設施。





# FLOOR PLANS OF RESIDENTIAL PROPERTIES IN THE DEVELOPMENT

## 發展項目的住宅物業的樓面平面圖

### Tower 1 第1座

Tower 座數	Floor 樓層	Flat 單位	Thickness of the floor slabs (excluding plaster) of each residential property (mm) 每個住宅物業的樓板 (不包括灰泥) 的厚度 (毫米)	Floor-to-floor height (refers to the height between the top surface of the structural slab of a floor and the top surface of the structural slab of its immediate upper floor) of each residential property (mm) 每個住宅物業的層與層之間的高度 (指該樓層之石屎地台面與上一層石屎地台面之高度距離) (毫米)
Tower 1 第1座	38/F 38樓	A1	150	3500, 3575 <sup>◇</sup> , 3850 <sup>☆</sup> , 4000 <sup>□</sup>
		A2	150	3500, 3575 <sup>◇</sup> , 3850 <sup>☆</sup> , 4000 <sup>□</sup>
		A3	150	3500, 3575 <sup>◇</sup> , 3750 <sup>◎</sup> , 3850 <sup>☆</sup> , 3900 <sup>△</sup> , 4000 <sup>□</sup>
		A5	150	3500, 3575 <sup>◇</sup> , 3750 <sup>◎</sup> , 3850 <sup>☆</sup> , 3900 <sup>△</sup> , 4000 <sup>□</sup>
		A6	150	3500, 3575 <sup>◇</sup> , 3850 <sup>☆</sup> , 4000 <sup>□</sup>

Tower 座數	Floor 樓層	Flat 單位	Thickness of the floor slabs (excluding plaster) of each residential property (mm) 每個住宅物業的樓板 (不包括灰泥) 的厚度 (毫米)	Floor-to-floor height (refers to the height between the top surface of the structural slab of a floor and the top surface of the structural slab of its immediate upper floor) of each residential property (mm) 每個住宅物業的層與層之間的高度 (指該樓層之石屎地台面與上一層石屎地台面之高度距離) (毫米)
Tower 1 第1座	38/F 38樓	B1	150	3500, 3575 <sup>◇</sup> , 3850 <sup>☆</sup> , 4000 <sup>□</sup>
		B2	150	3500, 3575 <sup>◇</sup> , 3850 <sup>☆</sup> , 4000 <sup>□</sup>
		B3	150	3500, 3575 <sup>◇</sup> , 3750 <sup>◎</sup> , 3850 <sup>☆</sup> , 3900 <sup>△</sup> , 4000 <sup>□</sup>
		B5	150	3500, 3575 <sup>◇</sup> , 3750 <sup>◎</sup> , 3850 <sup>☆</sup> , 3900 <sup>△</sup> , 4000 <sup>□</sup>
		B6	150	3500, 3575 <sup>◇</sup> , 3850 <sup>☆</sup> , 4000 <sup>□</sup>

- ◇ Inclusive of the sunken depth of the sunken slab on the floor of this floor (75mm) 包括本層地台跌級樓板之跌級深度 (75 毫米)  
 ◎ Inclusive of the sunken depth of the sunken slab on the floor of this floor (250mm) 包括本層地台跌級樓板之跌級深度 (250 毫米)  
 ☆ Inclusive of the sunken depth of the sunken slab on the floor of this floor (350mm) 包括本層地台跌級樓板之跌級深度 (350 毫米)  
 △ Inclusive of the sunken depth of the sunken slab on the floor of this floor (400mm) 包括本層地台跌級樓板之跌級深度 (400 毫米)  
 □ Inclusive of the sunken depth of the sunken slab on the floor of this floor (500mm) 包括本層地台跌級樓板之跌級深度 (500 毫米)

The internal areas of the residential properties on the upper floors will generally be slightly larger than those on the lower floors because of the reducing thickness of the structural walls on the upper floors (Note: This statement as required under section 10(2)(e) of Part 1 of Schedule 1 to the Residential Properties (First-hand Sales) Ordinance is not applicable to the Development). 因住宅物業的較高樓層的結構牆的厚度遞減，較高樓層的內部面積，一般比較低樓層的內部面積稍大 (備註：此根據《一手住宅物業銷售條例》附表1第1部第10(2)(e)條規定之陳述並不適用於本發展項目)。

#### Remarks :

- (1) According to Special Condition No.(8)(d) of the Land Grant, the minimum number of residential units in the Development is 666.
  - (2) According to Special Condition No.(43) of the Land Grant, except with the prior written consent of the Director of Lands, the owners shall not carry out or permit or suffer to be carried out any works in connection with any residential unit erected or to be erected on the lot, including but not limited to demolition or alteration of any partition wall or any floor or roof slab or any partition structure, which shall result in such unit being internally linked to and accessible from any adjoining or adjacent residential unit erected or to be erected on the lot. The decision of the Director of Lands as to what constitutes works resulting in a unit being internally linked to and accessible from any adjoining or adjacent residential unit shall be final and binding on the owners.
  - (3) Clause 8.7 of the Deed of Mutual Covenant and Management Agreement of the Development provides that: "Record of consent on linking or merging of Flats. The Manager shall deposit in the management office the record provided by the Director of Lands of the information relating to the consent given under the Land Grant for inspection by all Owners free of costs and for taking copies at their own expense and on payment of a reasonable charge, all charges received to be credited to the Special Fund".
  - (4) A total number of 1,556 residential units are provided in the Development.
- The dimensions in the floor plans are all structural dimensions in millimetre and rounded off to the nearest integer.
  - Please refer to the first page of this section for legend of the terms and abbreviations shown in the floor plan.

#### 備註：

- (1) 根據批地文件特別條件第(8)(d)條，發展項目住宅單位數目最少為666個。
  - (2) 根據批地文件特別條件第(43)條，除非獲地政總署署長事先書面同意，業主不得進行或容許或容受進行任何與地段內已建或將建之任何住宅單位有關連而會導致該住宅單位與地段內已建或將建之任何毗連或鄰近住宅單位內部相通及可從該毗連或鄰近住宅單位進出的工程 (包括但不限於任何分隔牆、任何地板或天花板或任何間隔構築物的拆除或改動)。地政總署署長就何等工程構成會導致單位與任何毗連或鄰近單位內部相通及可從該毗連或鄰近單位進出之工程一事之決定屬終局決定及對業主有約束力。
  - (3) 發展項目公契第8.7條訂明：「連結或結合住宅單位同意之紀錄。管理人須在管理處備存由地政總署署長提供而與在批地文件下批出之同意有關的資訊的紀錄。所有業主可免費查閱上述備存的紀錄，亦可自費繳付合理費用後索取副本，所有費用收取後須撥入特別基金。」
  - (4) 發展項目共提供1,556個住宅單位。
- 樓面平面圖之尺規所列數字為以毫米標示之建築結構尺寸，並以四捨五入至整數。
  - 平面圖中顯示之名詞及簡稱之圖例請參閱本節之首頁。

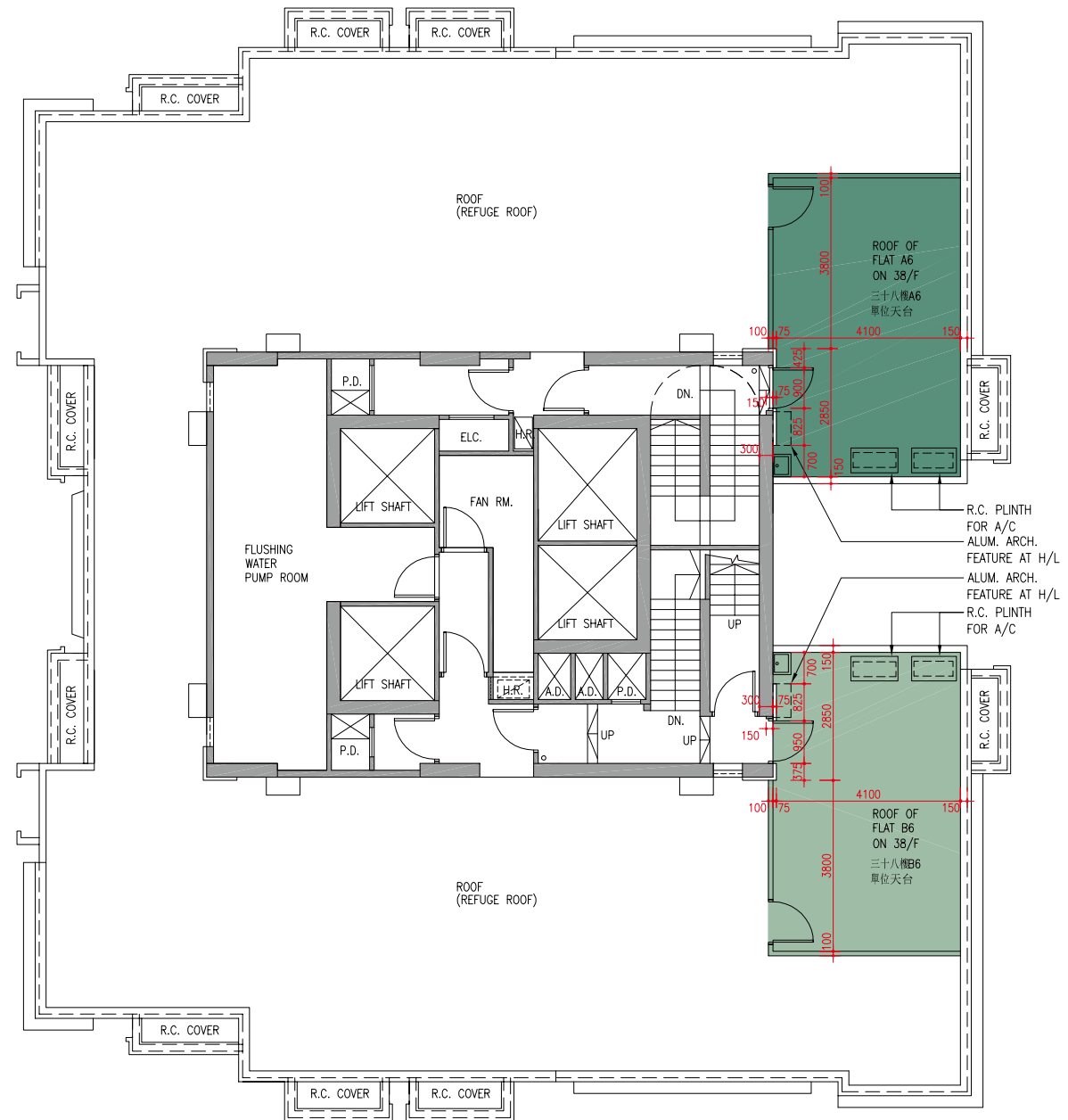


# FLOOR PLANS OF RESIDENTIAL PROPERTIES IN THE DEVELOPMENT

## 發展項目的住宅物業的樓面平面圖

Tower 1  
第1座

Roof  
天台



N  
SCALE 0 1 2 3 4 5M/米  
比例

# FLOOR PLANS OF RESIDENTIAL PROPERTIES IN THE DEVELOPMENT

## 發展項目的住宅物業的樓面平面圖

### Tower 1 第1座

Tower 座數	Floor 樓層	Flat 單位	Thickness of the floor slabs (excluding plaster) of each residential property (mm) 每個住宅物業的樓板 (不包括灰泥) 的厚度 (毫米)	Floor-to-floor height (refers to the height between the top surface of the structural slab of a floor and the top surface of the structural slab of its immediate upper floor) of each residential property (mm) 每個住宅物業的層與層之間的高度 (指該樓層之石屎地台面與上一層石屎地台面之高度距離) (毫米)
Tower 1 第1座	R/F 天台	A6	Not Applicable 不適用	Not Applicable 不適用
		B6	Not Applicable 不適用	Not Applicable 不適用

The internal areas of the residential properties on the upper floors will generally be slightly larger than those on the lower floors because of the reducing thickness of the structural walls on the upper floors (Note: This statement as required under section 10(2)(e) of Part 1 of Schedule 1 to the Residential Properties (First-hand Sales) Ordinance is not applicable to the Development).  
因住宅物業的較高樓層的結構牆的厚度遞減，較高樓層的內部面積，一般比較低樓層的內部面積稍大(備註：此根據《一手住宅物業銷售條例》附表1第1部第10(2)(e)條規定之陳述並不適用於本發展項目)。

#### Remarks :

- (1) According to Special Condition No.(8)(d) of the Land Grant, the minimum number of residential units in the Development is 666.
  - (2) According to Special Condition No.(43) of the Land Grant, except with the prior written consent of the Director of Lands, the owners shall not carry out or permit or suffer to be carried out any works in connection with any residential unit erected or to be erected on the lot, including but not limited to demolition or alteration of any partition wall or any floor or roof slab or any partition structure, which shall result in such unit being internally linked to and accessible from any adjoining or adjacent residential unit erected or to be erected on the lot. The decision of the Director of Lands as to what constitutes works resulting in a unit being internally linked to and accessible from any adjoining or adjacent residential unit shall be final and binding on the owners.
  - (3) Clause 8.7 of the Deed of Mutual Covenant and Management Agreement of the Development provides that: "Record of consent on linking or merging of Flats. The Manager shall deposit in the management office the record provided by the Director of Lands of the information relating to the consent given under the Land Grant for inspection by all Owners free of costs and for taking copies at their own expense and on payment of a reasonable charge, all charges received to be credited to the Special Fund".
  - (4) A total number of 1,556 residential units are provided in the Development.
- The dimensions in the floor plans are all structural dimensions in millimetre and rounded off to the nearest integer.
  - Please refer to the first page of this section for legend of the terms and abbreviations shown in the floor plan.

#### 備註：

- (1) 根據批地文件特別條件第(8)(d)條，發展項目住宅單位數目最少為666個。
  - (2) 根據批地文件特別條件第(43)條，除非獲地政總署署長事先書面同意，業主不得進行或容許或容受進行任何與地段內已建或將建之任何住宅單位有關連而會導致該住宅單位與地段內已建或將建之任何毗連或鄰近住宅單位內部相通及可從該毗連或鄰近住宅單位進出的工程(包括但不限於任何分隔牆、任何地板或天花板或任何間隔構築物的拆除或改動)。地政總署署長就何等工程構成會導致單位與任何毗連或鄰近單位內部相通及可從該毗連或鄰近單位進出之工程一事之決定屬終局決定及對業主有約束力。
  - (3) 發展項目公契第8.7條訂明：「連結或結合住宅單位同意之紀錄。管理人須在管理處備存由地政總署署長提供而與在批地文件下批出之同意有關的資訊的紀錄。所有業主可免費查閱上述備存的紀錄，亦可自費繳付合理費用後索取副本，所有費用收取後須撥入特別基金。」
  - (4) 發展項目共提供1,556個住宅單位。
- 樓面平面圖之尺規所列數字為以毫米標示之建築結構尺寸，並以四捨五入至整數。
  - 平面圖中顯示之名詞及簡稱之圖例請參閱本節之首頁。

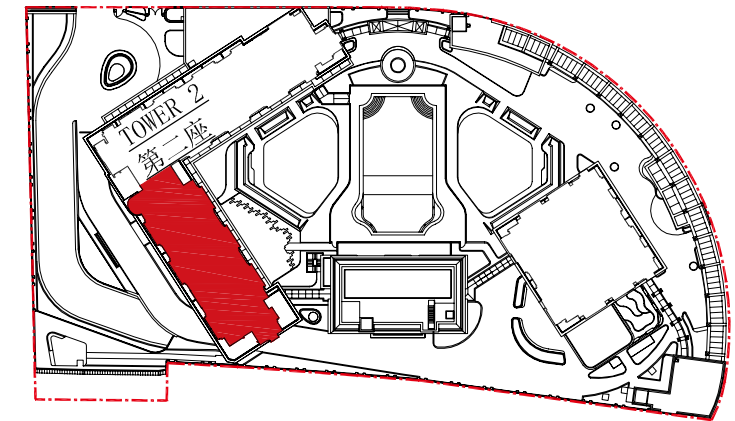


# FLOOR PLANS OF RESIDENTIAL PROPERTIES IN THE DEVELOPMENT

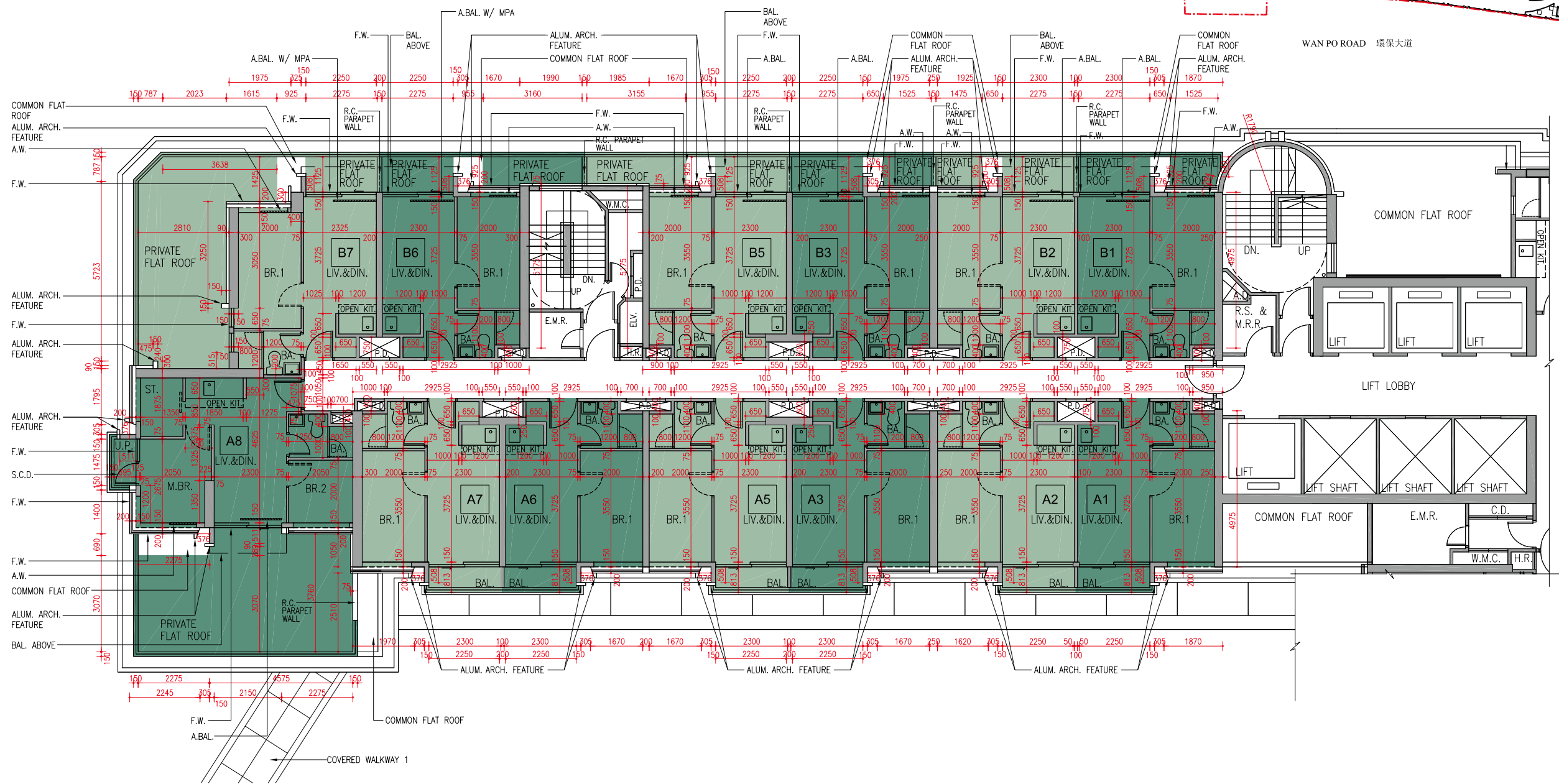
## 發展項目的住宅物業的樓面平面圖

Tower 2 1/F | Flat A1 - A3, Flat A5 - A8, Flat B1 - B3 and Flat B5 - B7  
 第2座 1樓 | 單位A1至A3、單位A5至A8、單位B1至B3及單位B5至B7

SHEK KOK ROAD 石角路



WAN PO ROAD 環保大道



N SCALE 0 1 2 3 4 5M/米  
 比例

# FLOOR PLANS OF RESIDENTIAL PROPERTIES IN THE DEVELOPMENT

## 發展項目的住宅物業的樓面平面圖

### Tower 2 第2座

Tower 座數	Floor 樓層	Flat 單位	Thickness of the floor slabs (excluding plaster) of each residential property (mm) 每個住宅物業的樓板 (不包括灰泥) 的厚度 (毫米)	Floor-to-floor height (refers to the height between the top surface of the structural slab of a floor and the top surface of the structural slab of its immediate upper floor) of each residential property (mm) 每個住宅物業的層與層之間的高度 (指該樓層之石屎地台面與上一層石屎地台面之高度距離) (毫米)
Tower 2 第2座	1/F 1樓	A1	150	3400, 3475, 3475 <sup>□</sup> , 3900 <sup>□</sup> , 3975 <sup>□</sup>
		A2	150	3400, 3475, 3475 <sup>□</sup> , 3900 <sup>□</sup> , 3975 <sup>□</sup>
		A3	150	3400, 3475, 3475 <sup>□</sup> , 3900 <sup>□</sup> , 3975 <sup>□</sup>
		A5	150	3400, 3475, 3475 <sup>□</sup> , 3900 <sup>□</sup> , 3975 <sup>□</sup>
		A6	150	3400, 3475, 3475 <sup>□</sup> , 3900 <sup>□</sup> , 3975 <sup>□</sup>
		A7	150	3400, 3475, 3475 <sup>□</sup> , 3900 <sup>□</sup> , 3975 <sup>□</sup>
		A8	150	3125, 3475, 3475 <sup>□</sup> , 3625 <sup>□</sup> , 3900 <sup>□</sup> , 3975 <sup>□</sup>

Tower 座數	Floor 樓層	Flat 單位	Thickness of the floor slabs (excluding plaster) of each residential property (mm) 每個住宅物業的樓板 (不包括灰泥) 的厚度 (毫米)	Floor-to-floor height (refers to the height between the top surface of the structural slab of a floor and the top surface of the structural slab of its immediate upper floor) of each residential property (mm) 每個住宅物業的層與層之間的高度 (指該樓層之石屎地台面與上一層石屎地台面之高度距離) (毫米)
Tower 2 第2座	1/F 1樓	B1	150	3400, 3475, 3475 <sup>□</sup> , 3900 <sup>□</sup> , 3975 <sup>□</sup>
		B2	150	3400, 3475, 3475 <sup>□</sup> , 3900 <sup>□</sup> , 3975 <sup>□</sup>
		B3	150	3400, 3475, 3475 <sup>□</sup> , 3900 <sup>□</sup> , 3975 <sup>□</sup>
		B5	150	3400, 3475, 3475 <sup>□</sup> , 3900 <sup>□</sup> , 3975 <sup>□</sup>
		B6	150, 225	3400, 3475, 3475 <sup>□</sup> , 3900 <sup>□</sup> , 3975 <sup>□</sup>
		B7	150	3475, 3475 <sup>□</sup> , 3900 <sup>□</sup> , 3975 <sup>□</sup>

□ Inclusive of the sunken depth of the sunken slab on the floor of this floor (500mm) 包括本層地台跌級樓板之跌級深度 (500 毫米)

The internal areas of the residential properties on the upper floors will generally be slightly larger than those on the lower floors because of the reducing thickness of the structural walls on the upper floors (Note: This statement as required under section 10(2)(e) of Part 1 of Schedule 1 to the Residential Properties (First-hand Sales) Ordinance is not applicable to the Development).  
因住宅物業的較高樓層的結構牆的厚度遞減，較高樓層的內部面積，一般比較低樓層的內部面積稍大(備註：此根據《一手住宅物業銷售條例》附表1第1部第10(2)(e)條規定之陳述並不適用於本發展項目)。

#### Remarks :

- (1) According to Special Condition No.(8)(d) of the Land Grant, the minimum number of residential units in the Development is 666.
  - (2) According to Special Condition No.(43) of the Land Grant, except with the prior written consent of the Director of Lands, the owners shall not carry out or permit or suffer to be carried out any works in connection with any residential unit erected or to be erected on the lot, including but not limited to demolition or alteration of any partition wall or any floor or roof slab or any partition structure, which shall result in such unit being internally linked to and accessible from any adjoining or adjacent residential unit erected or to be erected on the lot. The decision of the Director of Lands as to what constitutes works resulting in a unit being internally linked to and accessible from any adjoining or adjacent residential unit shall be final and binding on the owners.
  - (3) Clause 8.7 of the Deed of Mutual Covenant and Management Agreement of the Development provides that: "Record of consent on linking or merging of Flats. The Manager shall deposit in the management office the record provided by the Director of Lands of the information relating to the consent given under the Land Grant for inspection by all Owners free of costs and for taking copies at their own expense and on payment of a reasonable charge, all charges received to be credited to the Special Fund".
  - (4) A total number of 1,556 residential units are provided in the Development.
- The dimensions in the floor plans are all structural dimensions in millimetre and rounded off to the nearest integer.
  - Please refer to the first page of this section for legend of the terms and abbreviations shown in the floor plan.

#### 備註：

- (1) 根據批地文件特別條件第(8)(d)條，發展項目住宅單位數目最少為666個。
  - (2) 根據批地文件特別條件第(43)條，除非獲地政總署署長事先書面同意，業主不得進行或容許或容受進行任何與地段內已建或將建之任何住宅單位有關連而會導致該住宅單位與地段內已建或將建之任何毗連或鄰近住宅單位內部相通及可從該毗連或鄰近住宅單位進出的工程(包括但不限於任何分隔牆、任何地板或天花板或任何間隔構築物的拆除或改動)。地政總署署長就何等工程構成會導致單位與任何毗連或鄰近單位內部相通及可從該毗連或鄰近單位進出之工程一事之決定屬終局決定及對業主有約束力。
  - (3) 發展項目公契第8.7條訂明：「連結或結合住宅單位同意之紀錄。管理人須在管理處備存由地政總署署長提供而與在批地文件下批出之同意有關的資訊的紀錄。所有業主可免費查閱上述備存的紀錄，亦可自費繳付合理費用後索取副本，所有費用收取後須撥入特別基金。」
  - (4) 發展項目共提供1,556個住宅單位。
- 樓面平面圖之尺規所列數字為以毫米標示之建築結構尺寸，並以四捨五入至整數。
  - 平面圖中顯示之名詞及簡稱之圖例請參閱本節之首頁。

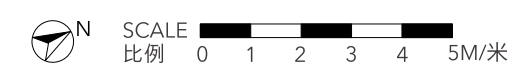
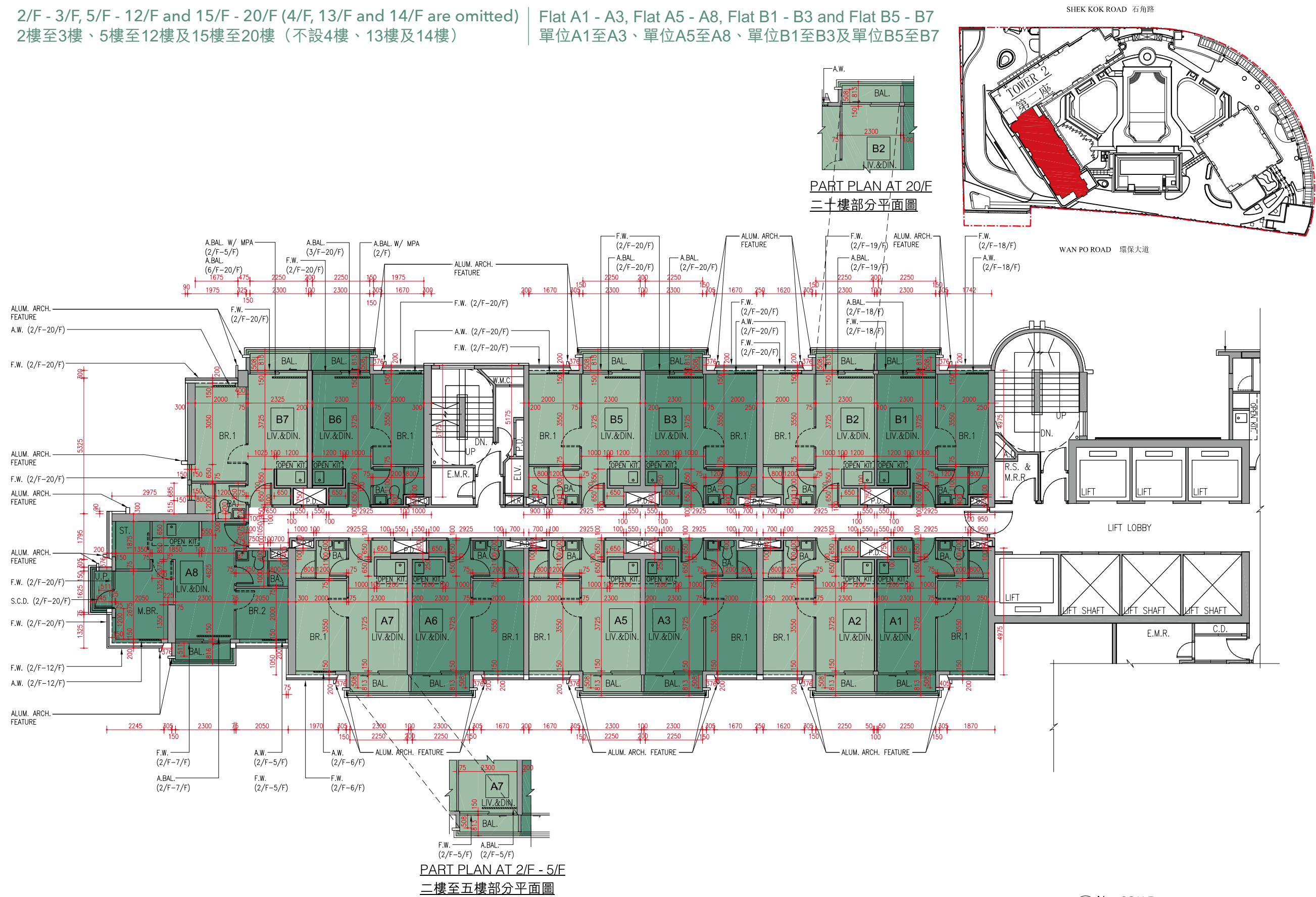


# FLOOR PLANS OF RESIDENTIAL PROPERTIES IN THE DEVELOPMENT

## 發展項目的住宅物業的樓面平面圖

**Tower 2** 2/F - 3/F, 5/F - 12/F and 15/F - 20/F (4/F, 13/F and 14/F are omitted)  
**第2座** 2樓至3樓、5樓至12樓及15樓至20樓（不設4樓、13樓及14樓）

Flat A1 - A3, Flat A5 - A8, Flat B1 - B3 and Flat B5 - B7  
 單位A1至A3、單位A5至A8、單位B1至B3及單位B5至B7



# FLOOR PLANS OF RESIDENTIAL PROPERTIES IN THE DEVELOPMENT

## 發展項目的住宅物業的樓面平面圖

### Tower 2 第2座

Tower 座數	Floor 樓層	Flat 單位	Thickness of the floor slabs (excluding plaster) of each residential property (mm) 每個住宅物業的樓板 (不包括灰泥) 的厚度 (毫米)	Floor-to-floor height (refers to the height between the top surface of the structural slab of a floor and the top surface of the structural slab of its immediate upper floor) of each residential property (mm) 每個住宅物業的層與層之間的高度 (指該樓層之石屎地台面與上一層石屎地台面之高度距離) (毫米)
Tower 2 第2座	2/F - 3/F, 5/F - 12/F and 15/F - 20/F (4/F, 13/F and 14/F are omitted) 2樓至3樓、 5樓至12樓及 15樓至20樓 (不設4樓、 13樓及14樓)	A1	150	3475, 3475 <sup>◇</sup> , 3475 <sup>□</sup>
		A2	150	3475, 3475 <sup>◇</sup> , 3475 <sup>□</sup>
		A3	150	3475, 3475 <sup>◇</sup> , 3475 <sup>□</sup>
		A5	150	3475, 3475 <sup>◇</sup> , 3475 <sup>□</sup>
		A6	150	3475, 3475 <sup>◇</sup> , 3475 <sup>□</sup>
		A7	150	3475, 3475 <sup>◇</sup> , 3475 <sup>□</sup>
		A8	150	3475, 3475 <sup>◇</sup> , 3475 <sup>☆</sup> , 3475 <sup>□</sup>

Tower 座數	Floor 樓層	Flat 單位	Thickness of the floor slabs (excluding plaster) of each residential property (mm) 每個住宅物業的樓板 (不包括灰泥) 的厚度 (毫米)	Floor-to-floor height (refers to the height between the top surface of the structural slab of a floor and the top surface of the structural slab of its immediate upper floor) of each residential property (mm) 每個住宅物業的層與層之間的高度 (指該樓層之石屎地台面與上一層石屎地台面之高度距離) (毫米)
Tower 2 第2座	2/F - 3/F, 5/F - 12/F and 15/F - 20/F (4/F, 13/F and 14/F are omitted) 2樓至3樓、 5樓至12樓及 15樓至20樓 (不設4樓、 13樓及14樓)	B1	150	3475, 3475 <sup>◇</sup> , 3475 <sup>□</sup>
		B2	150	3475, 3475 <sup>◇</sup> , 3475 <sup>□</sup>
		B3	150	3475, 3475 <sup>◇</sup> , 3475 <sup>□</sup>
		B5	150	3475, 3475 <sup>◇</sup> , 3475 <sup>□</sup>
		B6	150, 225	3475, 3475 <sup>◇</sup> , 3475 <sup>□</sup>
		B7	150	3475, 3475 <sup>◇</sup> , 3475 <sup>□</sup>

◇ Inclusive of the sunken depth of the sunken slab on the floor of this floor (75mm) 包括本層地台跌級樓板之跌級深度 (75 毫米)

☆ Inclusive of the sunken depth of the sunken slab on the floor of this floor (350mm) 包括本層地台跌級樓板之跌級深度 (350 毫米)

□ Inclusive of the sunken depth of the sunken slab on the floor of this floor (500mm) 包括本層地台跌級樓板之跌級深度 (500 毫米)

The internal areas of the residential properties on the upper floors will generally be slightly larger than those on the lower floors because of the reducing thickness of the structural walls on the upper floors (Note: This statement as required under section 10(2)(e) of Part 1 of Schedule 1 to the Residential Properties (First-hand Sales) Ordinance is not applicable to the Development).

因住宅物業的較高樓層的結構牆的厚度遞減，較高樓層的內部面積，一般比較低樓層的內部面積稍大(備註：此根據《一手住宅物業銷售條例》附表1第1部第10(2)(e)條規定之陳述並不適用於本發展項目)。

#### Remarks :

- (1) According to Special Condition No.(8)(d) of the Land Grant, the minimum number of residential units in the Development is 666.
  - (2) According to Special Condition No.(43) of the Land Grant, except with the prior written consent of the Director of Lands, the owners shall not carry out or permit or suffer to be carried out any works in connection with any residential unit erected or to be erected on the lot, including but not limited to demolition or alteration of any partition wall or any floor or roof slab or any partition structure, which shall result in such unit being internally linked to and accessible from any adjoining or adjacent residential unit erected or to be erected on the lot. The decision of the Director of Lands as to what constitutes works resulting in a unit being internally linked to and accessible from any adjoining or adjacent residential unit shall be final and binding on the owners.
  - (3) Clause 8.7 of the Deed of Mutual Covenant and Management Agreement of the Development provides that: "Record of consent on linking or merging of Flats. The Manager shall deposit in the management office the record provided by the Director of Lands of the information relating to the consent given under the Land Grant for inspection by all Owners free of costs and for taking copies at their own expense and on payment of a reasonable charge, all charges received to be credited to the Special Fund".
  - (4) A total number of 1,556 residential units are provided in the Development.
- The dimensions in the floor plans are all structural dimensions in millimetre and rounded off to the nearest integer.
  - Please refer to the first page of this section for legend of the terms and abbreviations shown in the floor plan.

#### 備註：

- (1) 根據批地文件特別條件第(8)(d)條，發展項目住宅單位數目最少為666個。
  - (2) 根據批地文件特別條件第(43)條，除非獲地政總署署長事先書面同意，業主不得進行或容許或容受進行任何與地段內已建或將建之任何住宅單位有關連而會導致該住宅單位與地段內已建或將建之任何毗連或鄰近住宅單位內部相通及可從該毗連或鄰近住宅單位進出的工程(包括但不限於任何分隔牆、任何地板或天花板或任何間隔構築物的拆除或改動)。地政總署署長就何等工程構成會導致單位與任何毗連或鄰近單位內部相通及可從該毗連或鄰近單位進出之工程一事之決定屬終局決定及對業主有約束力。
  - (3) 發展項目公契第8.7條訂明：「連結或結合住宅單位同意之紀錄。管理人須在管理處備存由地政總署署長提供而與在批地文件下批出之同意有關的資訊的紀錄。所有業主可免費查閱上述備存的紀錄，亦可自費繳付合理費用後索取副本，所有費用收取後須撥入特別基金。」
  - (4) 發展項目共提供1,556個住宅單位。
- 樓面平面圖之尺規所列數字為以毫米標示之建築結構尺寸，並以四捨五入至整數。
  - 平面圖中顯示之名詞及簡稱之圖例請參閱本節之首頁。



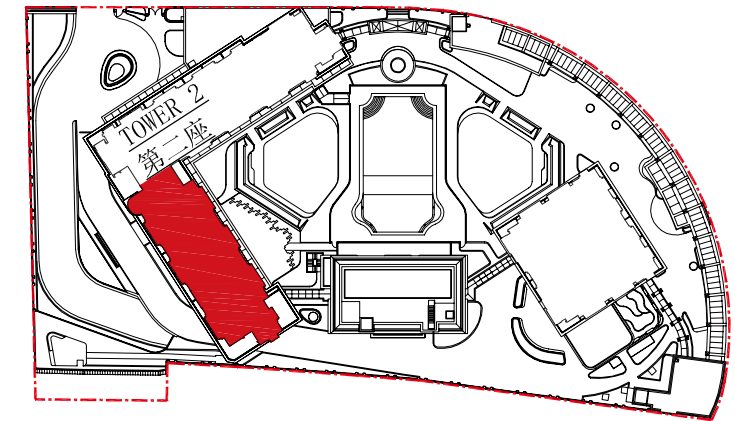
# FLOOR PLANS OF RESIDENTIAL PROPERTIES IN THE DEVELOPMENT

## 發展項目的住宅物業的樓面平面圖

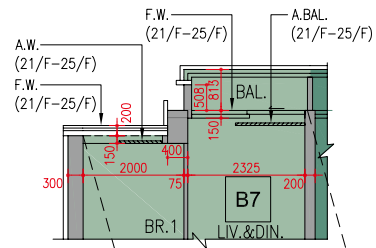
**Tower 2 第2座** 21/F - 23/F, 25/F - 33/F and 35/F - 38/F (24/F and 34/F are omitted)  
 21樓至23樓、25樓至33樓及35樓至38樓 (不設24樓及34樓)

Flat A1 - A3, Flat A5 - A8, Flat B1 - B3 and Flat B5 - B7  
 單位A1至A3、單位A5至A8、單位B1至B3及單位B5至B7

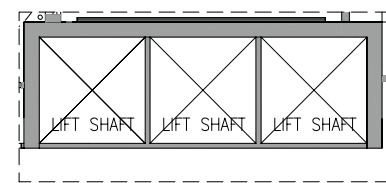
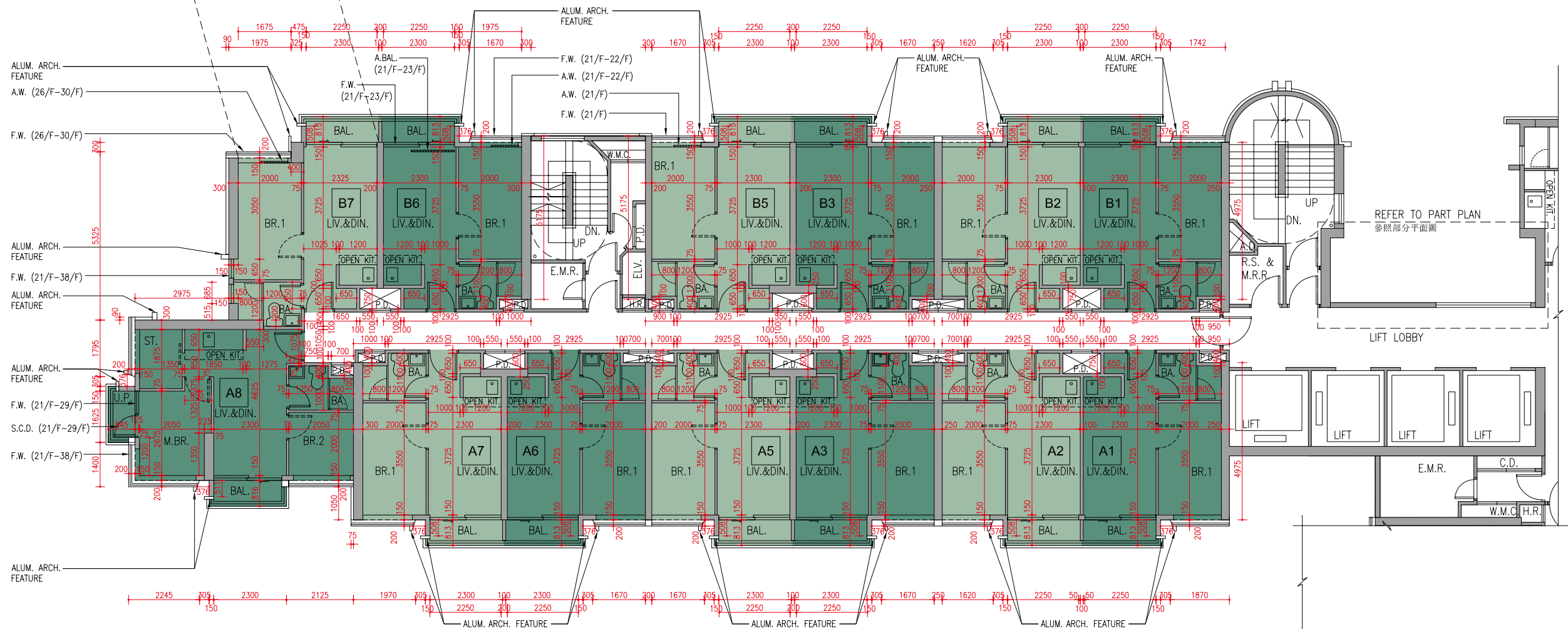
SHEK KOK ROAD 石角路



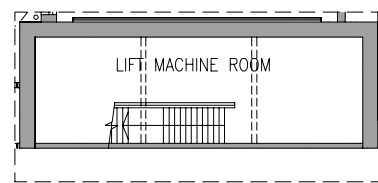
WAN PO ROAD 環保大道



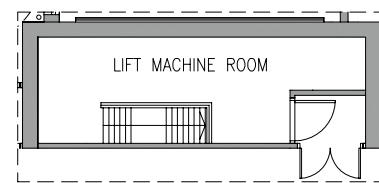
PART PLAN AT 21/F - 25/F  
 二十一樓至二十五樓部分平面圖



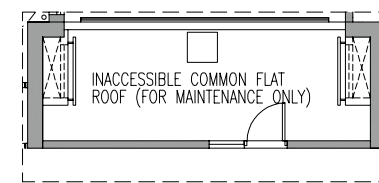
PART PLAN AT 21/F  
 二十一樓部分平面圖



PART PLAN AT 22/F  
 二十二樓部分平面圖



PART PLAN AT 23/F  
 二十三樓部分平面圖



PART PLAN AT 25/F  
 二十五樓部分平面圖

SCALE 比例 0 1 2 3 4 5M/米

# FLOOR PLANS OF RESIDENTIAL PROPERTIES IN THE DEVELOPMENT

## 發展項目的住宅物業的樓面平面圖

### Tower 2 第2座

Tower 座數	Floor 樓層	Flat 單位	Thickness of the floor slabs (excluding plaster) of each residential property (mm) 每個住宅物業的樓板 (不包括灰泥) 的厚度 (毫米)	Floor-to-floor height (refers to the height between the top surface of the structural slab of a floor and the top surface of the structural slab of its immediate upper floor) of each residential property (mm) 每個住宅物業的層與層之間的高度 (指該樓層之石屎地台面與上一層石屎地台面之高度距離) (毫米)
Tower 2 第2座	21/F - 23/F, 25/F - 33/F and 35/F - 37/F (24/F and 34/F are omitted) 21樓至23樓、25樓至33樓及35樓至37樓 (不設24樓及34樓)	A1	150	3475, 3475 <sup>◇</sup> , 3475 <sup>□</sup>
		A2	150	3475, 3475 <sup>◇</sup> , 3475 <sup>□</sup>
		A3	150	3475, 3475 <sup>◇</sup> , 3475 <sup>□</sup>
		A5	150	3475, 3475 <sup>◇</sup> , 3475 <sup>□</sup>
		A6	150	3475, 3475 <sup>◇</sup> , 3475 <sup>□</sup>
		A7	150	3475, 3475 <sup>◇</sup> , 3475 <sup>□</sup>
		A8	150	3475, 3475 <sup>◇</sup> , 3475 <sup>☆</sup> , 3475 <sup>□</sup>
		B1	150	3475, 3475 <sup>◇</sup> , 3475 <sup>□</sup>
		B2	150	3475, 3475 <sup>◇</sup> , 3475 <sup>□</sup>
		B3	150	3475, 3475 <sup>◇</sup> , 3475 <sup>□</sup>
		B5	150	3475, 3475 <sup>◇</sup> , 3475 <sup>□</sup>
		B6	150, 225	3475, 3475 <sup>◇</sup> , 3475 <sup>□</sup>
		B7	150	3475, 3475 <sup>◇</sup> , 3475 <sup>□</sup>

Tower 座數	Floor 樓層	Flat 單位	Thickness of the floor slabs (excluding plaster) of each residential property (mm) 每個住宅物業的樓板 (不包括灰泥) 的厚度 (毫米)	Floor-to-floor height (refers to the height between the top surface of the structural slab of a floor and the top surface of the structural slab of its immediate upper floor) of each residential property (mm) 每個住宅物業的層與層之間的高度 (指該樓層之石屎地台面與上一層石屎地台面之高度距離) (毫米)
Tower 2 第2座	38/F 38樓	A1	150	3500, 3575 <sup>◇</sup> , 4000 <sup>□</sup>
		A2	150	3500, 3575 <sup>◇</sup> , 4000 <sup>□</sup>
		A3	150	3500, 3575 <sup>◇</sup> , 4000 <sup>□</sup>
		A5	150	3500, 3575 <sup>◇</sup> , 4000 <sup>□</sup>
		A6	150	3500, 3575 <sup>◇</sup> , 4000 <sup>□</sup>
		A7	150	3500, 3575 <sup>◇</sup> , 4000 <sup>□</sup>
		A8	150	3500, 3575 <sup>◇</sup> , 3850 <sup>☆</sup> , 4000 <sup>□</sup>
		B1	150	3500, 3575 <sup>◇</sup> , 4000 <sup>□</sup>
		B2	150	3500, 3575 <sup>◇</sup> , 4000 <sup>□</sup>
		B3	150	3500, 3575 <sup>◇</sup> , 4000 <sup>□</sup>
		B5	150	3500, 3575 <sup>◇</sup> , 4000 <sup>□</sup>
		B6	150	3500, 3575 <sup>◇</sup> , 4000 <sup>□</sup>
		B7	150	3500, 3575 <sup>◇</sup> , 4000 <sup>□</sup>

◇ Inclusive of the sunken depth of the sunken slab on the floor of this floor (75mm) 包括本層地台跌級樓板之跌級深度 (75 毫米)  
 ☆ Inclusive of the sunken depth of the sunken slab on the floor of this floor (350mm) 包括本層地台跌級樓板之跌級深度 (350 毫米)  
 □ Inclusive of the sunken depth of the sunken slab on the floor of this floor (500mm) 包括本層地台跌級樓板之跌級深度 (500 毫米)

The internal areas of the residential properties on the upper floors will generally be slightly larger than those on the lower floors because of the reducing thickness of the structural walls on the upper floors (Note: This statement as required under section 10(2)(e) of Part 1 of Schedule 1 to the Residential Properties (First-hand Sales) Ordinance is not applicable to the Development). 因住宅物業的較高樓層的結構牆的厚度遞減，較高樓層的內部面積，一般比較低樓層的內部面積稍大(備註：此根據《一手住宅物業銷售條例》附表1第1部第10(2)(e)條規定之陳述並不適用於本發展項目)。

#### Remarks :

- (1) According to Special Condition No.(8)(d) of the Land Grant, the minimum number of residential units in the Development is 666.
  - (2) According to Special Condition No.(43) of the Land Grant, except with the prior written consent of the Director of Lands, the owners shall not carry out or permit or suffer to be carried out any works in connection with any residential unit erected or to be erected on the lot, including but not limited to demolition or alteration of any partition wall or any floor or roof slab or any partition structure, which shall result in such unit being internally linked to and accessible from any adjoining or adjacent residential unit erected or to be erected on the lot. The decision of the Director of Lands as to what constitutes works resulting in a unit being internally linked to and accessible from any adjoining or adjacent residential unit shall be final and binding on the owners.
  - (3) Clause 8.7 of the Deed of Mutual Covenant and Management Agreement of the Development provides that: "Record of consent on linking or merging of Flats. The Manager shall deposit in the management office the record provided by the Director of Lands of the information relating to the consent given under the Land Grant for inspection by all Owners free of costs and for taking copies at their own expense and on payment of a reasonable charge, all charges received to be credited to the Special Fund".
  - (4) A total number of 1,556 residential units are provided in the Development.
- The dimensions in the floor plans are all structural dimensions in millimetre and rounded off to the nearest integer.
  - Please refer to the first page of this section for legend of the terms and abbreviations shown in the floor plan.

#### 備註：

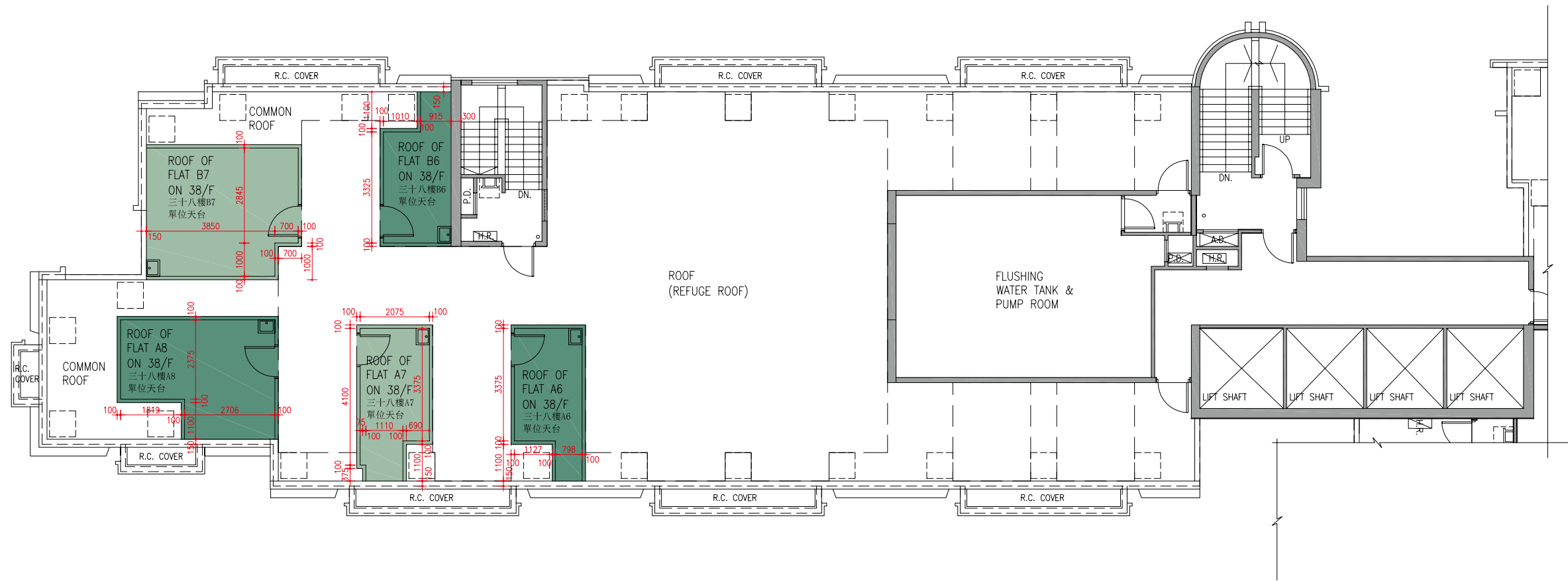
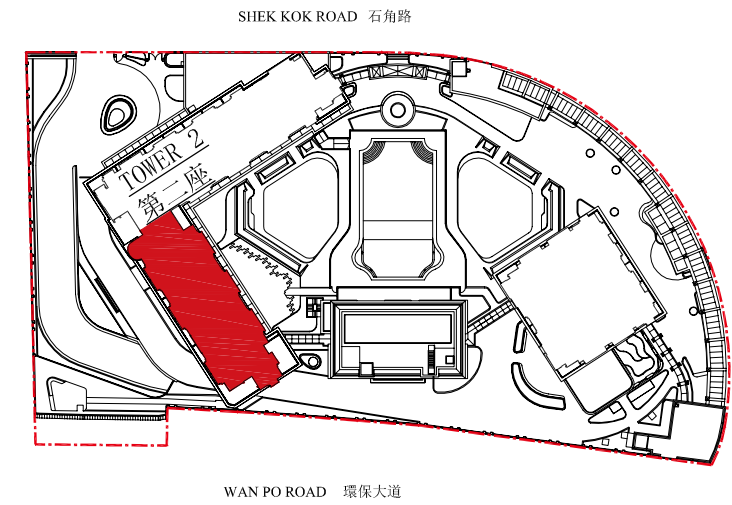
- (1) 根據批地文件特別條件第(8)(d)條，發展項目住宅單位數目最少為666個。
  - (2) 根據批地文件特別條件第(43)條，除非獲地政總署署長事先書面同意，業主不得進行或容許或容受進行任何與地段內已建或將建之任何住宅單位有關連而會導致該住宅單位與地段內已建或將建之任何毗連或鄰近住宅單位內部相通及可從該毗連或鄰近住宅單位進出的工程(包括但不限於任何分隔牆、任何地板或天花板或任何間隔構築物的拆除或改動)。地政總署署長就何等工程構成會導致單位與任何毗連或鄰近單位內部相通及可從該毗連或鄰近單位進出之工程一事之決定屬終局決定及對業主有約束力。
  - (3) 發展項目公契第8.7條訂明：「連結或結合住宅單位同意之紀錄。管理人須在管理處備存由地政總署署長提供而與在批地文件下批出之同意有關的資訊的紀錄。所有業主可免費查閱上述備存的紀錄，亦可自費繳付合理費用後索取副本，所有費用收取後須撥入特別基金。」
  - (4) 發展項目共提供1,556個住宅單位。
- 樓面平面圖之尺規所列數字為以毫米標示之建築結構尺寸，並以四捨五入至整數。
  - 平面圖中顯示之名稱及簡稱之圖例請參閱本節之首頁。



# FLOOR PLANS OF RESIDENTIAL PROPERTIES IN THE DEVELOPMENT

## 發展項目的住宅物業的樓面平面圖

Tower 2 Roof | Flat A6 - A8 and Flat B6 - B7  
 第2座 天台 | 單位A6至A8及單位B6至B7



N SCALE 0 1 2 3 4 5M/米  
 比例

# FLOOR PLANS OF RESIDENTIAL PROPERTIES IN THE DEVELOPMENT

## 發展項目的住宅物業的樓面平面圖

### Tower 2 第2座

Tower 座數	Floor 樓層	Flat 單位	Thickness of the floor slabs (excluding plaster) of each residential property (mm) 每個住宅物業的樓板 (不包括灰泥) 的厚度 (毫米)	Floor-to-floor height (refers to the height between the top surface of the structural slab of a floor and the top surface of the structural slab of its immediate upper floor) of each residential property (mm) 每個住宅物業的層與層之間的高度 (指該樓層之石屎地台面與上一層石屎地台面之高度距離) (毫米)
Tower 2 第2座	R/F 天台	A6	Not Applicable 不適用	Not Applicable 不適用
		A7	Not Applicable 不適用	Not Applicable 不適用
		A8	Not Applicable 不適用	Not Applicable 不適用
		B6	Not Applicable 不適用	Not Applicable 不適用
		B7	Not Applicable 不適用	Not Applicable 不適用

The internal areas of the residential properties on the upper floors will generally be slightly larger than those on the lower floors because of the reducing thickness of the structural walls on the upper floors (Note: This statement as required under section 10(2)(e) of Part 1 of Schedule 1 to the Residential Properties (First-hand Sales) Ordinance is not applicable to the Development).  
因住宅物業的較高樓層的結構牆的厚度遞減，較高樓層的內部面積，一般比較低樓層的內部面積稍大(備註：此根據《一手住宅物業銷售條例》附表1第1部第10(2)(e)條規定之陳述並不適用於本發展項目)。

#### Remarks :

- (1) According to Special Condition No.(8)(d) of the Land Grant, the minimum number of residential units in the Development is 666.
  - (2) According to Special Condition No.(43) of the Land Grant, except with the prior written consent of the Director of Lands, the owners shall not carry out or permit or suffer to be carried out any works in connection with any residential unit erected or to be erected on the lot, including but not limited to demolition or alteration of any partition wall or any floor or roof slab or any partition structure, which shall result in such unit being internally linked to and accessible from any adjoining or adjacent residential unit erected or to be erected on the lot. The decision of the Director of Lands as to what constitutes works resulting in a unit being internally linked to and accessible from any adjoining or adjacent residential unit shall be final and binding on the owners.
  - (3) Clause 8.7 of the Deed of Mutual Covenant and Management Agreement of the Development provides that: "Record of consent on linking or merging of Flats. The Manager shall deposit in the management office the record provided by the Director of Lands of the information relating to the consent given under the Land Grant for inspection by all Owners free of costs and for taking copies at their own expense and on payment of a reasonable charge, all charges received to be credited to the Special Fund".
  - (4) A total number of 1,556 residential units are provided in the Development.
- The dimensions in the floor plans are all structural dimensions in millimetre and rounded off to the nearest integer.
  - Please refer to the first page of this section for legend of the terms and abbreviations shown in the floor plan.

#### 備註：

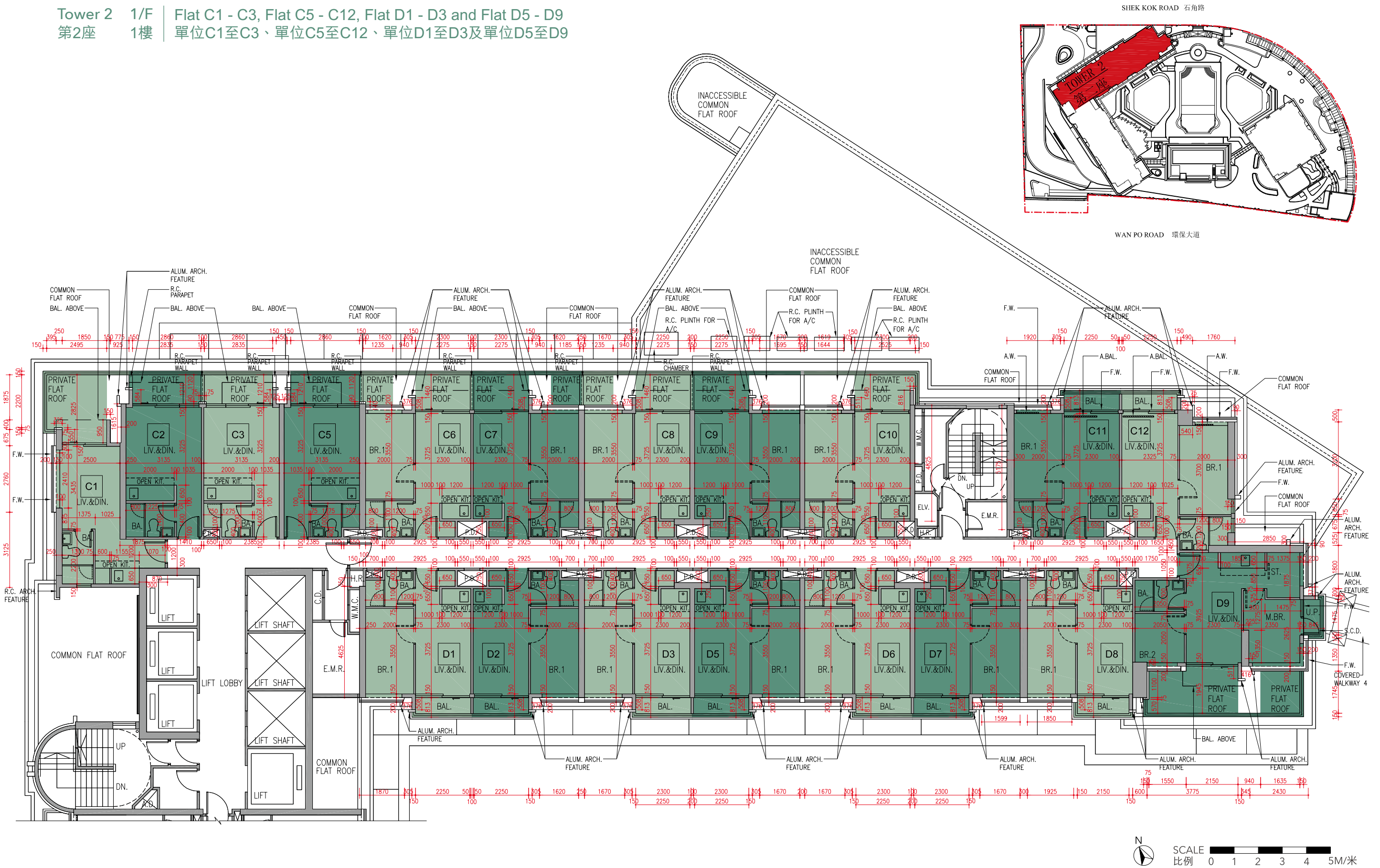
- (1) 根據批地文件特別條件第(8)(d)條，發展項目住宅單位數目最少為666個。
  - (2) 根據批地文件特別條件第(43)條，除非獲地政總署署長事先書面同意，業主不得進行或容許或容受進行任何與地段內已建或將建之任何住宅單位有關連而會導致該住宅單位與地段內已建或將建之任何毗連或鄰近住宅單位內部相通及可從該毗連或鄰近住宅單位進出的工程(包括但不限於任何分隔牆、任何地板或天花板或任何間隔構築物的拆除或改動)。地政總署署長就何等工程構成會導致單位與任何毗連或鄰近單位內部相通及可從該毗連或鄰近單位進出之工程一事之決定屬終局決定及對業主有約束力。
  - (3) 發展項目公契第8.7條訂明：「連結或結合住宅單位同意之紀錄。管理人須在管理處備存由地政總署署長提供而與在批地文件下批出之同意有關的資訊的紀錄。所有業主可免費查閱上述備存的紀錄，亦可自費繳付合理費用後索取副本，所有費用收取後須撥入特別基金。」
  - (4) 發展項目共提供1,556個住宅單位。
- 樓面平面圖之尺規所列數字為以毫米標示之建築結構尺寸，並以四捨五入至整數。
  - 平面圖中顯示之名詞及簡稱之圖例請參閱本節之首頁。



# FLOOR PLANS OF RESIDENTIAL PROPERTIES IN THE DEVELOPMENT

## 發展項目的住宅物業的樓面平面圖

Tower 2 1/F | Flat C1 - C3, Flat C5 - C12, Flat D1 - D3 and Flat D5 - D9  
 第2座 1樓 | 單位C1至C3、單位C5至C12、單位D1至D3及單位D5至D9



# FLOOR PLANS OF RESIDENTIAL PROPERTIES IN THE DEVELOPMENT

## 發展項目的住宅物業的樓面平面圖

### Tower 2 第2座

Tower 座數	Floor 樓層	Flat 單位	Thickness of the floor slabs (excluding plaster) of each residential property (mm) 每個住宅物業的樓板 (不包括灰泥) 的厚度 (毫米)	Floor-to-floor height (refers to the height between the top surface of the structural slab of a floor and the top surface of the structural slab of its immediate upper floor) of each residential property (mm) 每個住宅物業的層與層之間的高度 (指該樓層之石屎地台面與上一層石屎地台面之高度距離) (毫米)
Tower 2 第2座	1/F 1樓	C1	150	3475, 3475 <sup>□</sup> , 3900 <sup>□</sup> , 3975 <sup>□</sup>
		C2	150	2975, 3075, 3225, 3475, 3475 <sup>□</sup> , 3625 <sup>□</sup> , 3725 <sup>□</sup> , 3900 <sup>□</sup> , 3975 <sup>□</sup>
		C3	150	3075, 3225, 3475, 3475 <sup>□</sup> , 3625 <sup>□</sup> , 3725 <sup>□</sup> , 3900 <sup>□</sup> , 3975 <sup>□</sup>
		C5	150, 225	3075, 3225, 3475, 3475 <sup>□</sup> , 3625 <sup>□</sup> , 3725 <sup>□</sup> , 3900 <sup>□</sup> , 3975 <sup>□</sup>
		C6	150	3400, 3475, 3475 <sup>□</sup> , 3900 <sup>□</sup> , 3975 <sup>□</sup>
		C7	150	3400, 3475, 3475 <sup>□</sup> , 3900 <sup>□</sup> , 3975 <sup>□</sup>
		C8	150	3400, 3475, 3475 <sup>□</sup> , 3900 <sup>□</sup> , 3975 <sup>□</sup>
		C9	150	3400, 3475, 3475 <sup>□</sup> , 3900 <sup>□</sup> , 3975 <sup>□</sup>
		C10	150	3400, 3475, 3475 <sup>□</sup> , 3900 <sup>□</sup> , 3975 <sup>□</sup>

Tower 座數	Floor 樓層	Flat 單位	Thickness of the floor slabs (excluding plaster) of each residential property (mm) 每個住宅物業的樓板 (不包括灰泥) 的厚度 (毫米)	Floor-to-floor height (refers to the height between the top surface of the structural slab of a floor and the top surface of the structural slab of its immediate upper floor) of each residential property (mm) 每個住宅物業的層與層之間的高度 (指該樓層之石屎地台面與上一層石屎地台面之高度距離) (毫米)
Tower 2 第2座	1/F 1樓	C11	150	3400, 3475, 3475 <sup>□</sup> , 3900 <sup>□</sup> , 3975 <sup>□</sup>
		C12	150	3400, 3475, 3475 <sup>□</sup> , 3900 <sup>□</sup> , 3975 <sup>□</sup>
		D1	150	3400, 3475, 3475 <sup>□</sup> , 3900 <sup>□</sup> , 3975 <sup>□</sup>
		D2	150	3400, 3475, 3475 <sup>□</sup> , 3900 <sup>□</sup> , 3975 <sup>□</sup>
		D3	150	3400, 3475, 3475 <sup>□</sup> , 3900 <sup>□</sup> , 3975 <sup>□</sup>
		D5	150	3400, 3475, 3475 <sup>□</sup> , 3900 <sup>□</sup> , 3975 <sup>□</sup>
		D6	150	3400, 3475, 3475 <sup>□</sup> , 3900 <sup>□</sup> , 3975 <sup>□</sup>
		D7	150	3400, 3475, 3475 <sup>□</sup> , 3900 <sup>□</sup> , 3975 <sup>□</sup>
		D8	150	3400, 3475, 3475 <sup>□</sup> , 3900 <sup>□</sup> , 3975 <sup>□</sup>
		D9	150	3125, 3475, 3475 <sup>□</sup> , 3625 <sup>□</sup> , 3900 <sup>□</sup> , 3975 <sup>□</sup>

□ Inclusive of the sunken depth of the sunken slab on the floor of this floor (500mm) 包括本層地台跌級樓板之跌級深度 (500 毫米)

The internal areas of the residential properties on the upper floors will generally be slightly larger than those on the lower floors because of the reducing thickness of the structural walls on the upper floors (Note: This statement as required under section 10(2)(e) of Part 1 of Schedule 1 to the Residential Properties (First-hand Sales) Ordinance is not applicable to the Development). 因住宅物業的較高樓層的結構牆的厚度遞減，較高樓層的內部面積，一般比較低樓層的內部面積稍大 (備註：此根據《一手住宅物業銷售條例》附表1第1部第10(2)(e)條規定之陳述並不適用於本發展項目)。

#### Remarks :

- (1) According to Special Condition No.(8)(d) of the Land Grant, the minimum number of residential units in the Development is 666.
  - (2) According to Special Condition No.(43) of the Land Grant, except with the prior written consent of the Director of Lands, the owners shall not carry out or permit or suffer to be carried out any works in connection with any residential unit erected or to be erected on the lot, including but not limited to demolition or alteration of any partition wall or any floor or roof slab or any partition structure, which shall result in such unit being internally linked to and accessible from any adjoining or adjacent residential unit erected or to be erected on the lot. The decision of the Director of Lands as to what constitutes works resulting in a unit being internally linked to and accessible from any adjoining or adjacent residential unit shall be final and binding on the owners.
  - (3) Clause 8.7 of the Deed of Mutual Covenant and Management Agreement of the Development provides that: "Record of consent on linking or merging of Flats. The Manager shall deposit in the management office the record provided by the Director of Lands of the information relating to the consent given under the Land Grant for inspection by all Owners free of costs and for taking copies at their own expense and on payment of a reasonable charge, all charges received to be credited to the Special Fund".
  - (4) A total number of 1,556 residential units are provided in the Development.
- The dimensions in the floor plans are all structural dimensions in millimetre and rounded off to the nearest integer.
  - Please refer to the first page of this section for legend of the terms and abbreviations shown in the floor plan.

#### 備註：

- (1) 根據批地文件特別條件第(8)(d)條，發展項目住宅單位數目最少為666個。
  - (2) 根據批地文件特別條件第(43)條，除非獲地政總署署長事先書面同意，業主不得進行或容許或容受進行任何與地段內已建或將建之任何住宅單位有關連而會導致該住宅單位與地段內已建或將建之任何毗連或鄰近住宅單位內部相通及可從該毗連或鄰近住宅單位進出的工程 (包括但不限於任何分隔牆、任何地板或天花板或任何間隔構築物的拆除或改動)。地政總署署長就何等工程構成會導致單位與任何毗連或鄰近單位內部相通及可從該毗連或鄰近單位進出之工程一事之決定屬終局決定及對業主有約束力。
  - (3) 發展項目公契第8.7條訂明：「連結或結合住宅單位同意之紀錄。管理人須在管理處備存由地政總署署長提供而與在批地文件下批出之同意有關的資訊的紀錄。所有業主可免費查閱上述備存的紀錄，亦可自費繳付合理費用後索取副本，所有費用收取後須撥入特別基金。」
  - (4) 發展項目共提供1,556個住宅單位。
- 樓面平面圖之尺規所列數字為以毫米標示之建築結構尺寸，並以四捨五入至整數。
  - 平面圖中顯示之名詞及簡稱之圖例請參閱本節之首頁。

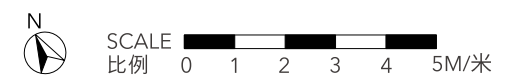
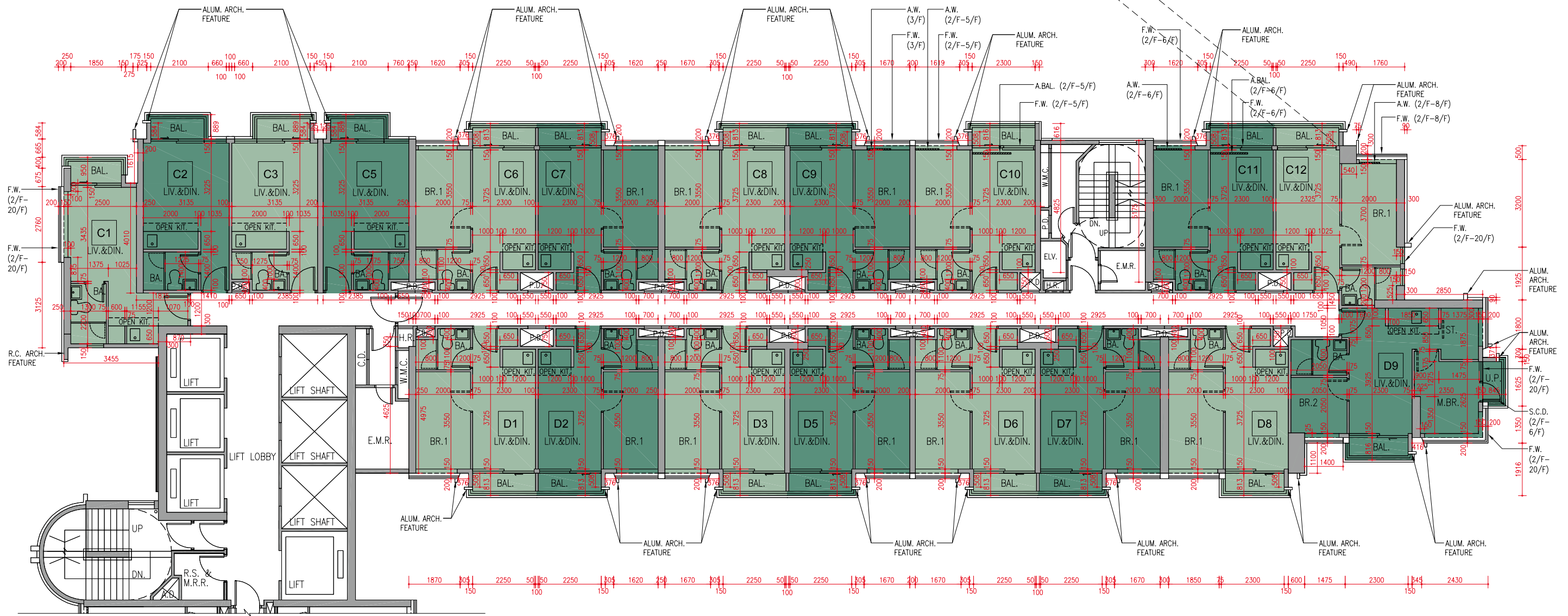
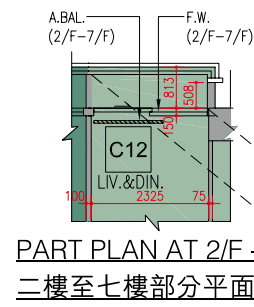
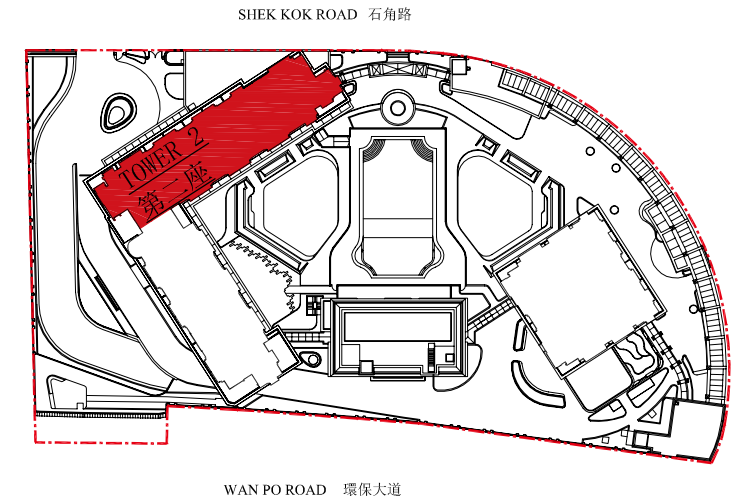


# FLOOR PLANS OF RESIDENTIAL PROPERTIES IN THE DEVELOPMENT

## 發展項目的住宅物業的樓面平面圖

**Tower 2** 2/F - 3/F, 5/F - 12/F and 15/F - 20/F (4/F, 13/F and 14/F are omitted)  
**第2座** 2樓至3樓、5樓至12樓及15樓至20樓（不設4樓、13樓及14樓）

**Flat C1 - C3, Flat C5 - C12, Flat D1 - D3 and Flat D5 - D9**  
**單位C1至C3、單位C5至C12、單位D1至D3及單位D5至D9**



# FLOOR PLANS OF RESIDENTIAL PROPERTIES IN THE DEVELOPMENT

## 發展項目的住宅物業的樓面平面圖

### Tower 2 第2座

Tower 座數	Floor 樓層	Flat 單位	Thickness of the floor slabs (excluding plaster) of each residential property (mm) 每個住宅物業的樓板 (不包括灰泥) 的厚度 (毫米)	Floor-to-floor height (refers to the height between the top surface of the structural slab of a floor and the top surface of the structural slab of its immediate upper floor) of each residential property (mm) 每個住宅物業的層與層之間的高度 (指該樓層之石屎地台面與上一層石屎地台面之高度距離) (毫米)
Tower 2 第2座	2/F - 3/F, 5/F - 12/F and 15/F - 20/F (4/F, 13/F and 14/F are omitted) 2樓至3樓、5樓至12樓及15樓至20樓 (不設4樓、13樓及14樓)	C1	150	3475, 3475 <sup>◇</sup> , 3475 <sup>□</sup>
		C2	150	3475, 3475 <sup>◇</sup> , 3475 <sup>◎</sup> , 3475 <sup>☆</sup> , 3475 <sup>△</sup> , 3475 <sup>□</sup>
		C3	150	3475, 3475 <sup>◇</sup> , 3475 <sup>◎</sup> , 3475 <sup>☆</sup> , 3475 <sup>△</sup> , 3475 <sup>□</sup>
		C5	150, 225	3475, 3475 <sup>◇</sup> , 3475 <sup>◎</sup> , 3475 <sup>☆</sup> , 3475 <sup>△</sup> , 3475 <sup>□</sup>
		C6	150	3475, 3475 <sup>◇</sup> , 3475 <sup>□</sup>
		C7	150	3475, 3475 <sup>◇</sup> , 3475 <sup>□</sup>
		C8	150	3475, 3475 <sup>◇</sup> , 3475 <sup>□</sup>
		C9	150	3475, 3475 <sup>◇</sup> , 3475 <sup>□</sup>
		C10	150	3475, 3475 <sup>◇</sup> , 3475 <sup>□</sup>
		C11	150	3475, 3475 <sup>◇</sup> , 3475 <sup>□</sup>

Tower 座數	Floor 樓層	Flat 單位	Thickness of the floor slabs (excluding plaster) of each residential property (mm) 每個住宅物業的樓板 (不包括灰泥) 的厚度 (毫米)	Floor-to-floor height (refers to the height between the top surface of the structural slab of a floor and the top surface of the structural slab of its immediate upper floor) of each residential property (mm) 每個住宅物業的層與層之間的高度 (指該樓層之石屎地台面與上一層石屎地台面之高度距離) (毫米)
Tower 2 第2座	2/F - 3/F, 5/F - 12/F and 15/F - 20/F (4/F, 13/F and 14/F are omitted) 2樓至3樓、5樓至12樓及15樓至20樓 (不設4樓、13樓及14樓)	C12	150	3475, 3475 <sup>◇</sup> , 3475 <sup>□</sup>
		D1	150	3475, 3475 <sup>◇</sup> , 3475 <sup>□</sup>
		D2	150	3475, 3475 <sup>◇</sup> , 3475 <sup>□</sup>
		D3	150	3475, 3475 <sup>◇</sup> , 3475 <sup>□</sup>
		D5	150	3475, 3475 <sup>◇</sup> , 3475 <sup>□</sup>
		D6	150	3475, 3475 <sup>◇</sup> , 3475 <sup>□</sup>
		D7	150	3475, 3475 <sup>◇</sup> , 3475 <sup>□</sup>
		D8	150	3475, 3475 <sup>◇</sup> , 3475 <sup>□</sup>
		D9	150	3475, 3475 <sup>◇</sup> , 3475 <sup>☆</sup> , 3475 <sup>□</sup>

- ◇ Inclusive of the sunken depth of the sunken slab on the floor of this floor (75mm) 包括本層地台跌級樓板之跌級深度 (75 毫米)  
 ◎ Inclusive of the sunken depth of the sunken slab on the floor of this floor (250mm) 包括本層地台跌級樓板之跌級深度 (250 毫米)  
 ☆ Inclusive of the sunken depth of the sunken slab on the floor of this floor (350mm) 包括本層地台跌級樓板之跌級深度 (350 毫米)  
 △ Inclusive of the sunken depth of the sunken slab on the floor of this floor (400mm) 包括本層地台跌級樓板之跌級深度 (400 毫米)  
 □ Inclusive of the sunken depth of the sunken slab on the floor of this floor (500mm) 包括本層地台跌級樓板之跌級深度 (500 毫米)

The internal areas of the residential properties on the upper floors will generally be slightly larger than those on the lower floors because of the reducing thickness of the structural walls on the upper floors (Note: This statement as required under section 10(2)(e) of Part 1 of Schedule 1 to the Residential Properties (First-hand Sales) Ordinance is not applicable to the Development).  
 因住宅物業的較高樓層的結構牆的厚度遞減，較高樓層的內部面積，一般比較低樓層的內部面積稍大 (備註：此根據《一手住宅物業銷售條例》附表1第1部第10(2)(e)條規定之陳述並不適用於本發展項目)。

#### Remarks :

- (1) According to Special Condition No.(8)(d) of the Land Grant, the minimum number of residential units in the Development is 666.
  - (2) According to Special Condition No.(43) of the Land Grant, except with the prior written consent of the Director of Lands, the owners shall not carry out or permit or suffer to be carried out any works in connection with any residential unit erected or to be erected on the lot, including but not limited to demolition or alteration of any partition wall or any floor or roof slab or any partition structure, which shall result in such unit being internally linked to and accessible from any adjoining or adjacent residential unit erected or to be erected on the lot. The decision of the Director of Lands as to what constitutes works resulting in a unit being internally linked to and accessible from any adjoining or adjacent residential unit shall be final and binding on the owners.
  - (3) Clause 8.7 of the Deed of Mutual Covenant and Management Agreement of the Development provides that: "Record of consent on linking or merging of Flats. The Manager shall deposit in the management office the record provided by the Director of Lands of the information relating to the consent given under the Land Grant for inspection by all Owners free of costs and for taking copies at their own expense and on payment of a reasonable charge, all charges received to be credited to the Special Fund".
  - (4) A total number of 1,556 residential units are provided in the Development.
- The dimensions in the floor plans are all structural dimensions in millimetre and rounded off to the nearest integer.
  - Please refer to the first page of this section for legend of the terms and abbreviations shown in the floor plan.

#### 備註：

- (1) 根據批地文件特別條件第(8)(d)條，發展項目住宅單位數目最少為666個。
  - (2) 根據批地文件特別條件第(43)條，除非獲地政總署署長事先書面同意，業主不得進行或容許或容受進行任何與地段內已建或將建之任何住宅單位有關連而會導致該住宅單位與地段內已建或將建之任何毗連或鄰近住宅單位內部相通及可從該毗連或鄰近住宅單位進出的工程 (包括但不限於任何分隔牆、任何地板或天花板或任何間隔構築物的拆除或改動)。地政總署署長就何等工程構成會導致單位與任何毗連或鄰近單位內部相通及可從該毗連或鄰近單位進出之工程一事之決定屬終局決定及對業主有約束力。
  - (3) 發展項目公契第8.7條訂明：「連結或結合住宅單位同意之紀錄。管理人須在管理處備存由地政總署署長提供而與在批地文件下批出之同意有關的資訊的紀錄。所有業主可免費查閱上述備存的紀錄，亦可自費繳付合理費用後索取副本，所有費用收取後須撥入特別基金。」
  - (4) 發展項目共提供1,556個住宅單位。
- 樓面平面圖之尺規所列數字為以毫米標示之建築結構尺寸，並以四捨五入至整數。
  - 平面圖中顯示之名詞及簡稱之圖例請參閱本節之首頁。





# FLOOR PLANS OF RESIDENTIAL PROPERTIES IN THE DEVELOPMENT

## 發展項目的住宅物業的樓面平面圖

### Tower 2 第2座

Tower 座數	Floor 樓層	Flat 單位	Thickness of the floor slabs (excluding plaster) of each residential property (mm) 每個住宅物業的樓板 (不包括灰泥) 的厚度 (毫米)	Floor-to-floor height (refers to the height between the top surface of the structural slab of a floor and the top surface of the structural slab of its immediate upper floor) of each residential property (mm) 每個住宅物業的層與層之間的高度 (指該樓層之石屎地台面與上一層石屎地台面之高度距離) (毫米)
Tower 2 第2座	21/F - 23/F, 25/F - 33/F and 35/F - 37/F (24/F and 34/F are omitted) 21樓至23樓、25樓至33樓及35樓至37樓 (不設24樓及34樓)	C1	150	3475, 3475 <sup>◇</sup> , 3475 <sup>□</sup>
		C2	150	3475, 3475 <sup>◇</sup> , 3475 <sup>◎</sup> , 3475 <sup>☆</sup> , 3475 <sup>△</sup> , 3475 <sup>□</sup>
		C3	150	3475, 3475 <sup>◇</sup> , 3475 <sup>◎</sup> , 3475 <sup>☆</sup> , 3475 <sup>△</sup> , 3475 <sup>□</sup>
		C5	150, 225	3475, 3475 <sup>◇</sup> , 3475 <sup>◎</sup> , 3475 <sup>☆</sup> , 3475 <sup>△</sup> , 3475 <sup>□</sup>
		C6	150	3475, 3475 <sup>◇</sup> , 3475 <sup>□</sup>
		C7	150	3475, 3475 <sup>◇</sup> , 3475 <sup>□</sup>
		C8	150	3475, 3475 <sup>◇</sup> , 3475 <sup>□</sup>
		C9	150	3475, 3475 <sup>◇</sup> , 3475 <sup>□</sup>
		C10	150	3475, 3475 <sup>◇</sup> , 3475 <sup>□</sup>
		C11	150	3475, 3475 <sup>◇</sup> , 3475 <sup>□</sup>
		C12	150	3475, 3475 <sup>◇</sup> , 3475 <sup>□</sup>
		D1	150	3475, 3475 <sup>◇</sup> , 3475 <sup>□</sup>
		D2	150	3475, 3475 <sup>◇</sup> , 3475 <sup>□</sup>
		D3	150	3475, 3475 <sup>◇</sup> , 3475 <sup>□</sup>
		D5	150	3475, 3475 <sup>◇</sup> , 3475 <sup>□</sup>
		D6	150	3475, 3475 <sup>◇</sup> , 3475 <sup>□</sup>
		D7	150	3475, 3475 <sup>◇</sup> , 3475 <sup>□</sup>
		D8	150	3475, 3475 <sup>◇</sup> , 3475 <sup>□</sup>
		D9	150	3475, 3475 <sup>◇</sup> , 3475 <sup>☆</sup> , 3475 <sup>□</sup>

Tower 座數	Floor 樓層	Flat 單位	Thickness of the floor slabs (excluding plaster) of each residential property (mm) 每個住宅物業的樓板 (不包括灰泥) 的厚度 (毫米)	Floor-to-floor height (refers to the height between the top surface of the structural slab of a floor and the top surface of the structural slab of its immediate upper floor) of each residential property (mm) 每個住宅物業的層與層之間的高度 (指該樓層之石屎地台面與上一層石屎地台面之高度距離) (毫米)
Tower 2 第2座	38/F 38樓	C1	150	3500, 3575 <sup>◇</sup> , 4000 <sup>□</sup>
		C2	150	3500, 3575 <sup>◇</sup> , 3750 <sup>◎</sup> , 3850 <sup>☆</sup> , 3900 <sup>△</sup> , 4000 <sup>□</sup>
		C3	150	3500, 3575 <sup>◇</sup> , 3750 <sup>◎</sup> , 3850 <sup>☆</sup> , 3900 <sup>△</sup> , 4000 <sup>□</sup>
		C5	150	3500, 3575 <sup>◇</sup> , 3750 <sup>◎</sup> , 3850 <sup>☆</sup> , 3900 <sup>△</sup> , 4000 <sup>□</sup>
		C6	150	3500, 3575 <sup>◇</sup> , 4000 <sup>□</sup>
		C7	150	3500, 3575 <sup>◇</sup> , 4000 <sup>□</sup>
		C8	150	3500, 3575 <sup>◇</sup> , 4000 <sup>□</sup>
		C9	150	3500, 3575 <sup>◇</sup> , 4000 <sup>□</sup>
		C10	150	3500, 3575 <sup>◇</sup> , 4000 <sup>□</sup>
		C11	150	3500, 3575 <sup>◇</sup> , 4000 <sup>□</sup>
		C12	150	3500, 3575 <sup>◇</sup> , 4000 <sup>□</sup>
		D1	150	3500, 3575 <sup>◇</sup> , 4000 <sup>□</sup>
		D2	150	3500, 3575 <sup>◇</sup> , 4000 <sup>□</sup>
		D3	150	3500, 3575 <sup>◇</sup> , 4000 <sup>□</sup>
		D5	150	3500, 3575 <sup>◇</sup> , 4000 <sup>□</sup>
		D6	150	3500, 3575 <sup>◇</sup> , 4000 <sup>□</sup>
		D7	150	3500, 3575 <sup>◇</sup> , 4000 <sup>□</sup>
		D8	150	3500, 3575 <sup>◇</sup> , 4000 <sup>□</sup>
		D9	150	3500, 3575 <sup>◇</sup> , 3850 <sup>☆</sup> , 4000 <sup>□</sup>

- ◇ Inclusive of the sunken depth of the sunken slab on the floor of this floor (75mm) 包括本層地台跌級樓板之跌級深度 (75 毫米)  
 ◎ Inclusive of the sunken depth of the sunken slab on the floor of this floor (250mm) 包括本層地台跌級樓板之跌級深度 (250 毫米)  
 ☆ Inclusive of the sunken depth of the sunken slab on the floor of this floor (350mm) 包括本層地台跌級樓板之跌級深度 (350 毫米)  
 △ Inclusive of the sunken depth of the sunken slab on the floor of this floor (400mm) 包括本層地台跌級樓板之跌級深度 (400 毫米)  
 □ Inclusive of the sunken depth of the sunken slab on the floor of this floor (500mm) 包括本層地台跌級樓板之跌級深度 (500 毫米)

The internal areas of the residential properties on the upper floors will generally be slightly larger than those on the lower floors because of the reducing thickness of the structural walls on the upper floors (Note: This statement as required under section 10(2)(e) of Part 1 of Schedule 1 to the Residential Properties (First-hand Sales) Ordinance is not applicable to the Development).  
 因住宅物業的較高樓層的結構牆的厚度遞減，較高樓層的內部面積，一般比較低樓層的內部面積稍大(備註：此根據《一手住宅物業銷售條例》附表1第1部第10(2)(e)條規定之陳述並不適用於本發展項目)。

#### Remarks :

- (1) According to Special Condition No.(8)(d) of the Land Grant, the minimum number of residential units in the Development is 666.
  - (2) According to Special Condition No.(43) of the Land Grant, except with the prior written consent of the Director of Lands, the owners shall not carry out or permit or suffer to be carried out any works in connection with any residential unit erected or to be erected on the lot, including but not limited to demolition or alteration of any partition wall or any floor or roof slab or any partition structure, which shall result in such unit being internally linked to and accessible from any adjoining or adjacent residential unit erected or to be erected on the lot. The decision of the Director of Lands as to what constitutes works resulting in a unit being internally linked to and accessible from any adjoining or adjacent residential unit shall be final and binding on the owners.
  - (3) Clause 8.7 of the Deed of Mutual Covenant and Management Agreement of the Development provides that: "Record of consent on linking or merging of Flats. The Manager shall deposit in the management office the record provided by the Director of Lands of the information relating to the consent given under the Land Grant for inspection by all Owners free of costs and for taking copies at their own expense and on payment of a reasonable charge, all charges received to be credited to the Special Fund".
  - (4) A total number of 1,556 residential units are provided in the Development.
2. The dimensions in the floor plans are all structural dimensions in millimetre and rounded off to the nearest integer.  
 3. Please refer to the first page of this section for legend of the terms and abbreviations shown in the floor plan.

#### 備註：

- (1) 根據批地文件特別條件第(8)(d)條，發展項目住宅單位數目最少為666個。
  - (2) 根據批地文件特別條件第(43)條，除非獲地政總署署長事先書面同意，業主不得進行或容許或容受進行任何與地段內已建或將建之任何住宅單位有關連而會導致該住宅單位與地段內已建或將建之任何毗連或鄰近住宅單位內部相通及可從該毗連或鄰近住宅單位進出的工程(包括但不限於任何分隔牆、任何地板或天花板或任何間隔構築物的拆除或改動)。地政總署署長就何等工程構成會導致單位與任何毗連或鄰近單位內部相通及可從該毗連或鄰近單位進出之工程一事之決定屬終局決定及對業主有約束力。
  - (3) 發展項目公契第8.7條訂明：「連結或結合住宅單位同意之紀錄。管理人須在管理處備存由地政總署署長提供而與在批地文件下批出之同意有關的資訊的紀錄。所有業主可免費查閱上述備存的紀錄，亦可自費繳付合理費用後索取副本，所有費用收取後須撥入特別基金。」
  - (4) 發展項目共提供1,556個住宅單位。
2. 樓面平面圖之尺規所列數字為以毫米標示之建築結構尺寸，並以四捨五入至整數。  
 3. 平面圖中顯示之名詞及簡稱之圖例請參閱本節之首頁。



# FLOOR PLANS OF RESIDENTIAL PROPERTIES IN THE DEVELOPMENT

## 發展項目的住宅物業的樓面平面圖

Tower 2 Roof | Flat C11 - C12 and Flat D7 - D9  
 第2座 天台 | 單位C11至C12及單位D7至D9

