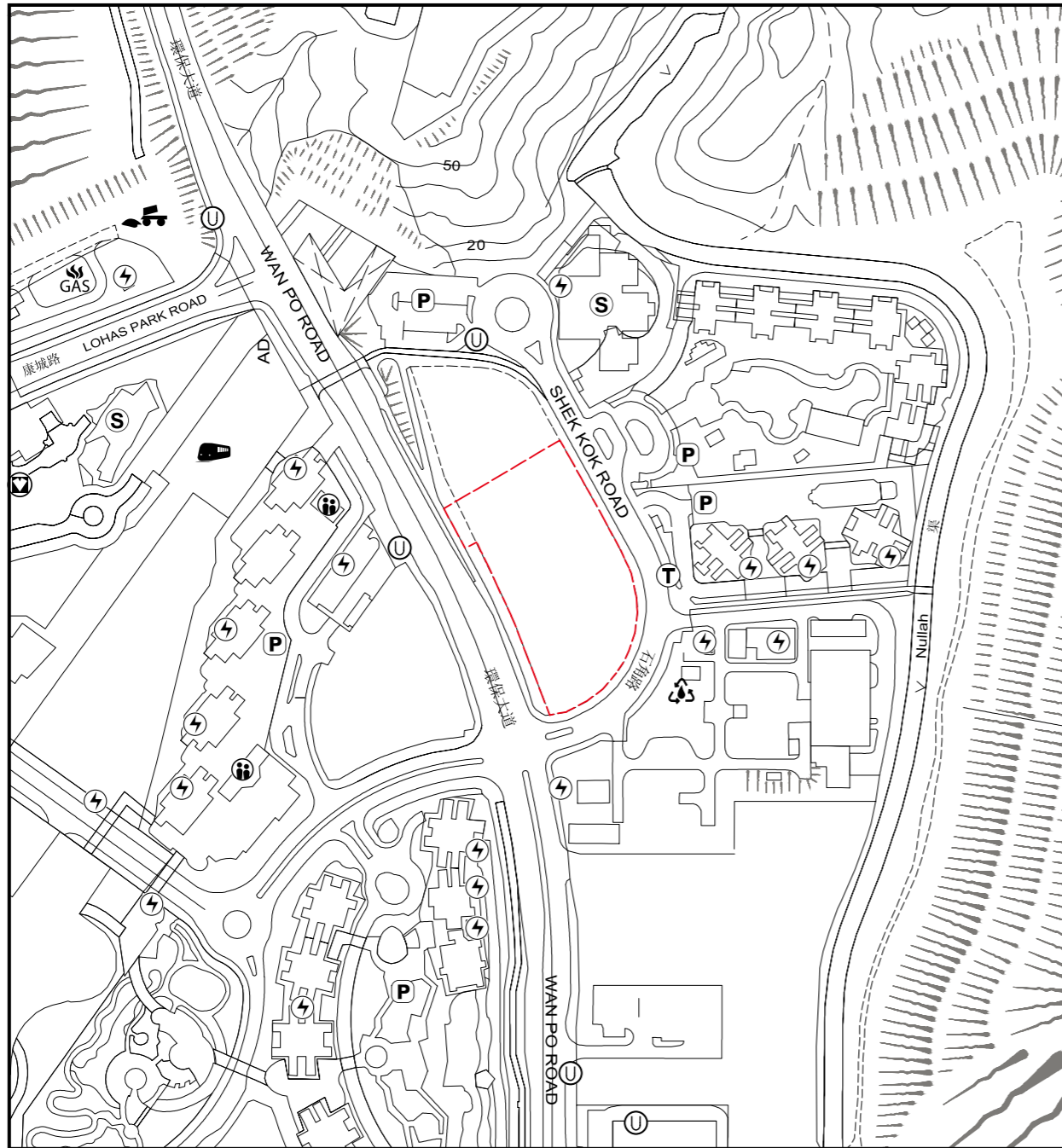


LOCATION PLAN OF THE DEVELOPMENT 發展項目的所在位置圖



Location of the Development
發展項目的位置

SCALE
比例 50 100 150 200 250M/米



The location plan is adopted from part of the Survey Sheet No. T12-NW-C and T12-SW-A from Survey and Mapping Office of Lands Department, with adjustments where necessary.

此所在位置圖乃參考地政總署測繪處的測繪圖編號T12-NW-C及T12-SW-A，經修正處理。

Notation 圖例

- | | |
|---|---|
| <p>Public Transport Terminal
(including Rail Station)
公共交通總站 (包括鐵路車站)</p> <p>Sewage Treatment Works and Facilities
污水處理廠及設施</p> <p>Power Plant
(including Electricity Sub-Stations)
發電廠 (包括電力分站)</p> <p>School (including Kindergarten)
學校 (包括幼稚園)</p> <p>Social Welfare Facilities
(including Elderly Centre and Home for
the Mentally Disabled)
社會福利設施
(包括老人中心及弱智人士護理院)</p> | <p>Public Carpark
(including Lorry Park)
公眾停車場 (包括貨車停泊處)</p> <p>Public Utility Installation
公用事業設施裝置</p> <p>Ventilation Shaft for the Mass Transit Railway
香港鐵路的通風井</p> <p>Railway Depot
鐵路車廠</p> <p>Landfills (including ex-landfills)
堆填區 (包括已停用的堆填區)</p> <p>Landfills Gas Flaring Plant
堆填區氣體燃燒廠</p> |
|---|---|

Remarks :

1. Due to technical reasons as a result of the irregular boundary of the Development, the Location Plan has shown more than the area required under the Residential Properties (First-hand Sales) Ordinance.
2. The Map is provided by the Hong Kong GeoData Store and intellectual property rights are owned by the Government of the HKSAR.

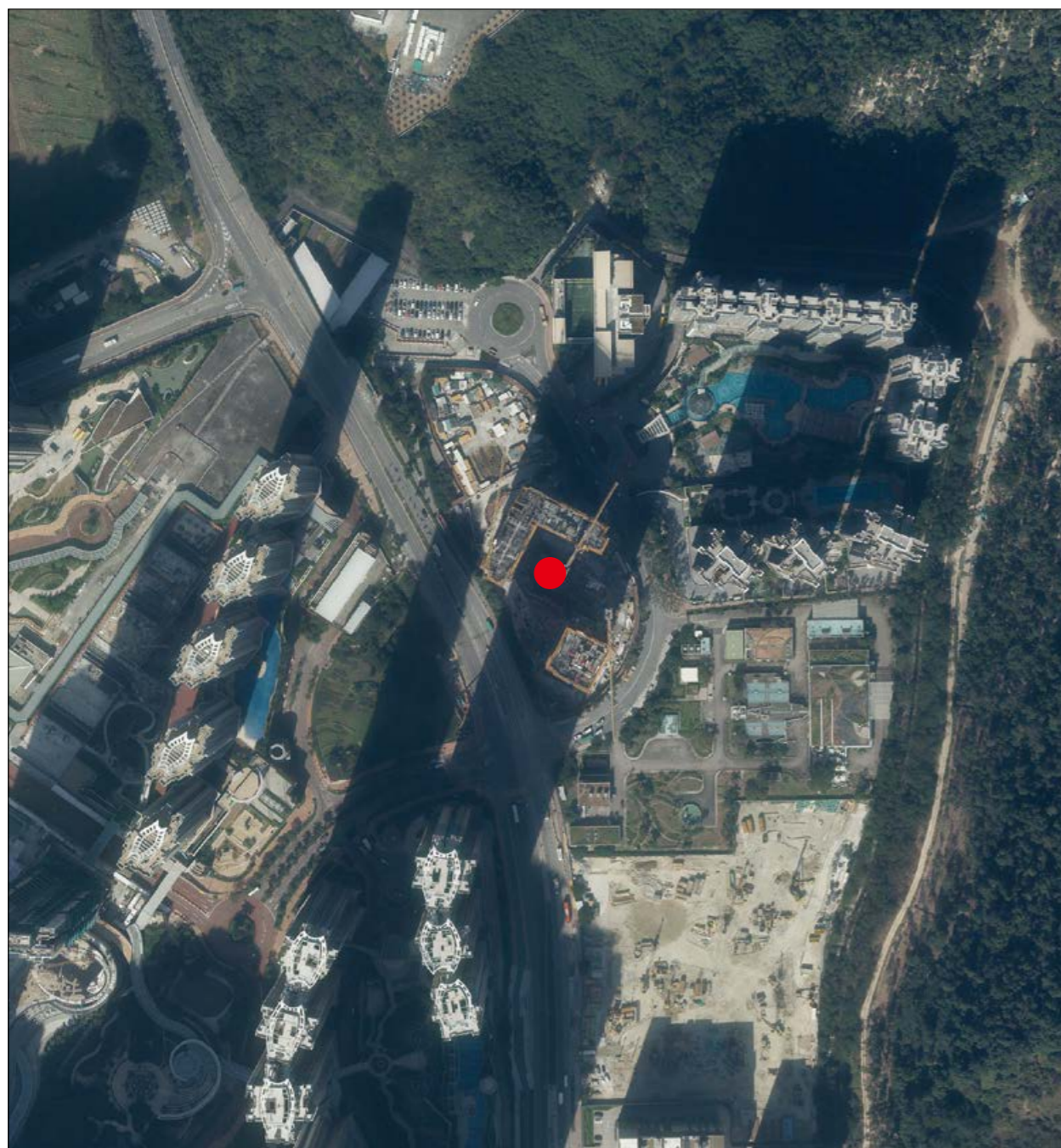
備註：

1. 因發展項目的不規則界線引致的技術原因，所在位置圖所顯示的範圍多於《一手住宅物業銷售條例》所要求。
2. 地圖由香港地理數據站提供，香港特別行政區政府為知識產權擁有人。

AERIAL PHOTOGRAPH OF THE DEVELOPMENT

發展項目的鳥瞰照片

Adopted from part of the aerial photograph taken by the Survey and Mapping Office of the Lands Department at a flying height of 6,900 feet, Photo No. E117648C, date of flight: 7 December 2020. 摘錄自地政總署測繪處在6,900呎的飛行高度拍攝之鳥瞰照片，照片編號E117648C，飛行日期：2020年12月7日。

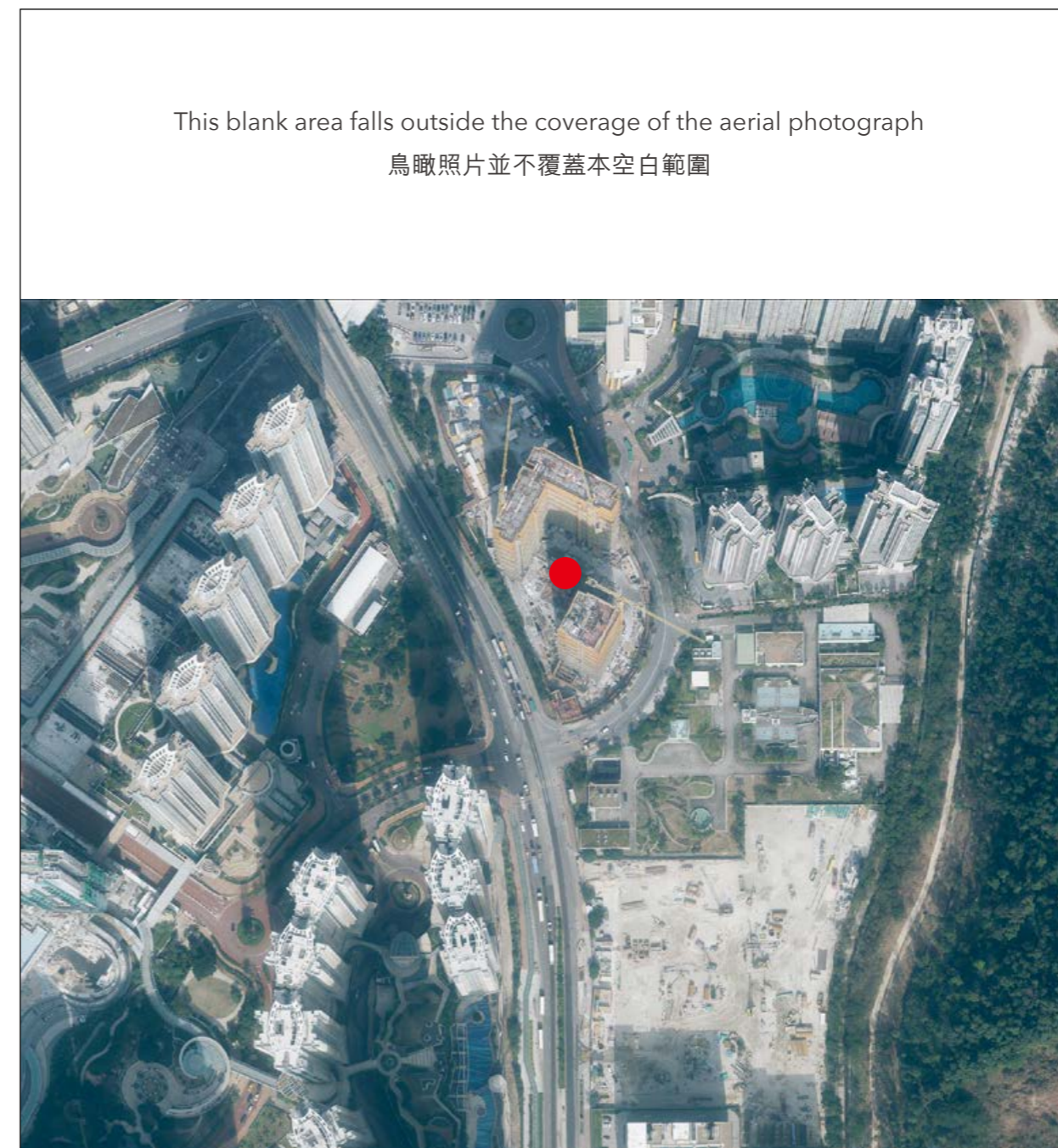


● Location of the Development
發展項目的位置

Survey and Mapping Office, Lands Department, The Government of HKSAR © Copyright reserved - reproduction by permission only.
香港特別行政區政府地政總署測繪處 © 版權所有，未經許可，不得翻印。

Aerial Photograph is/are provided by the Hong Kong GeoData Store and intellectual property rights are owned by the Government of the HKSAR.
鳥瞰照片由香港地理數據站提供，香港特別行政區政府為知識產權擁有人。

Adopted from part of the aerial photograph taken by the Survey and Mapping Office of the Lands Department at a flying height of 6,900 feet, Photo No. E118309C, date of flight: 6 January 2021. 摘錄自地政總署測繪處在6,900呎的飛行高度拍攝之鳥瞰照片，照片編號E118309C，飛行日期：2021年1月6日。



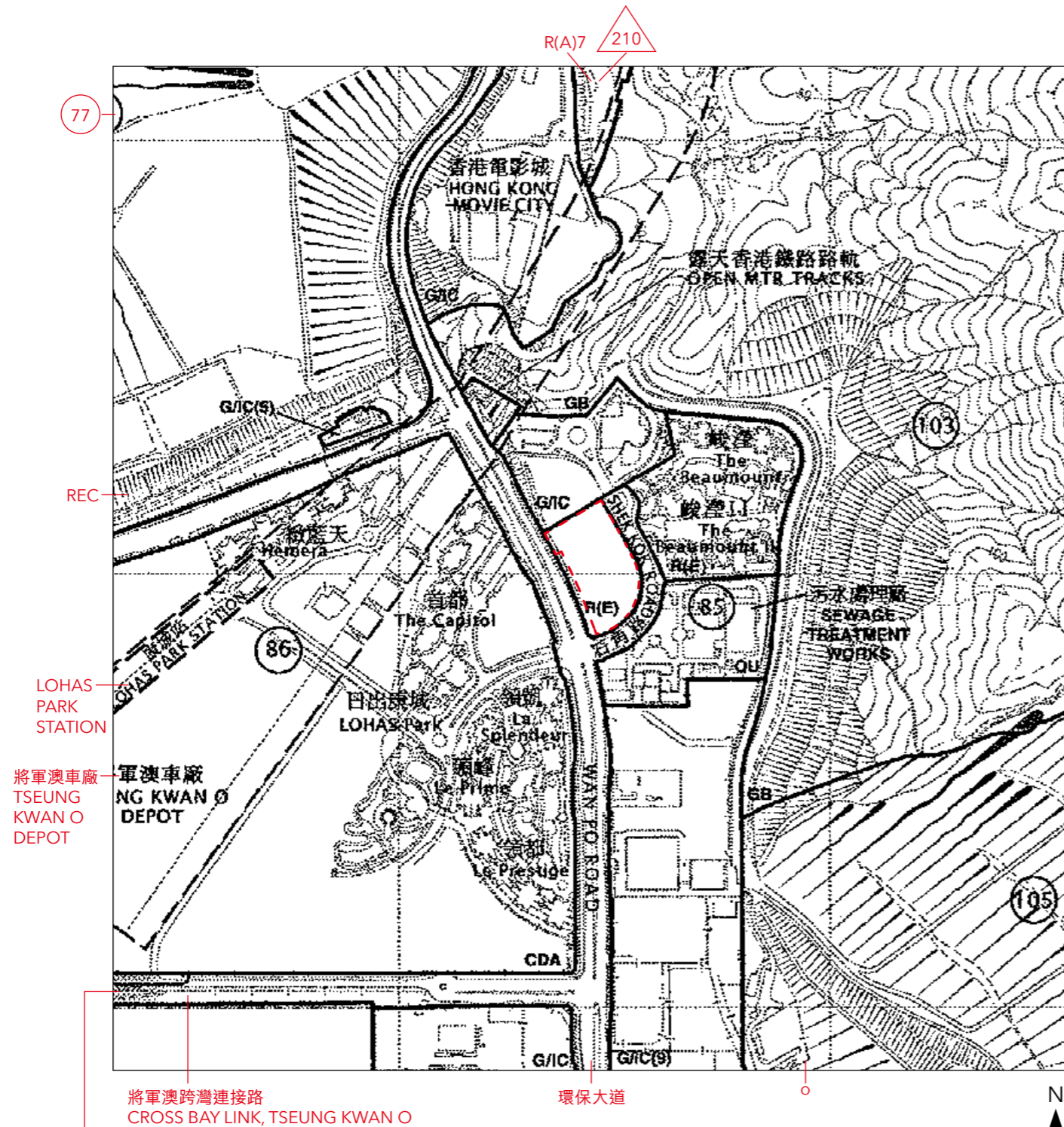
● Location of the Development
發展項目的位置

Remark:
Due to technical reasons (such as the shape of the Development), the aerial photographs have shown more than the area required under the Residential Properties (First-hand Sales) Ordinance.

備註：
因技術原因（例如發展項目之形狀），鳥瞰照片所顯示的範圍多於《一手住宅物業銷售條例》的規定。

OUTLINE ZONING PLAN ETC. RELATING TO THE DEVELOPMENT

關乎發展項目的分區計劃大綱圖等



LOHAS PARK STATION
將軍澳車廠
TSEUNG KWAN O DEPOT

將軍澳跨灣連接路
CROSS BAY LINK, TSEUNG KWAN O

環保大道

行政長官會同行政會議於2014年9月2日根據道路(工程、使用及補償)條例(第370章)批准的將軍澳跨灣連接路，有關方案所述的道路顯示在這份圖則上只供參考之用 THE ROAD AS DESCRIBED IN THE ROAD SCHEME FOR THE CROSS BAY LINK, TSEUNG KWAN O AUTHORIZED BY THE CHIEF EXECUTIVE IN COUNCIL UNDER THE ROADS (WORKS, USE AND COMPENSATION) ORDINANCE (CHAPTER 370) ON 2.9.2014 IS SHOWN ON THIS PLAN FOR INFORMATION ONLY



Location of the Development
發展項目的位置

Adopted from part of the Approved Tseung Kwan O Outline Zoning Plan, Plan No. S/TKO/28, gazetted on 18 June 2021, with adjustments where necessary as shown in red.

摘錄自2021年6月18日刊憲之將軍澳分區計劃大綱核准圖，圖則編號為S/TKO/28，有需要處經修正處理，以紅色表示。

Notation 圖例

Zones 地帶

COMPREHENSIVE DEVELOPMENT AREA 綜合發展區	CDA
RESIDENTIAL (GROUP A) 住宅 (甲類)	R(A)
RESIDENTIAL (GROUP E) 住宅 (戊類)	R(E)
GOVERNMENT, INSTITUTION OR COMMUNITY 政府、機構或社區	G/C
OPEN SPACE 休憩用地	O
RECREATION 康樂	REC
OTHER SPECIFIED USES 其他指定用途	OU
GREEN BELT 綠化地帶	GB

Communications 交通

RAILWAY AND STATION 鐵路及車站	車站 STATION
RAILWAY AND STATION (UNDERGROUND) 鐵路及車站 (地下)	車站 STATION
MAJOR ROAD AND JUNCTION 主要道路及路口	
ELEVATED ROAD 高架道路	

Miscellaneous 其他

PLANNING AREA NUMBER 規劃區編號	1
MAXIMUM BUILDING HEIGHT (IN METRES ABOVE PRINCIPAL DATUM) 最高建築物高度 (在主水平基準上若干米)	130

Remarks:

- Survey and Mapping Office, Lands Department, The Government of HKSAR © copyright reserved - reproduction by permission only.
- The outline zoning plan may show more than the area required under the Residential Properties (First-hand Sales) Ordinance due to technical reason.

備註:

- 香港特別行政區政府地政總署測繪處版權©所有，未經許可，不得複製。
- 由於技術原因，上述的分區計劃大綱圖所顯示的範圍可能多於《一手住宅物業銷售條例》所要求顯示的範圍。