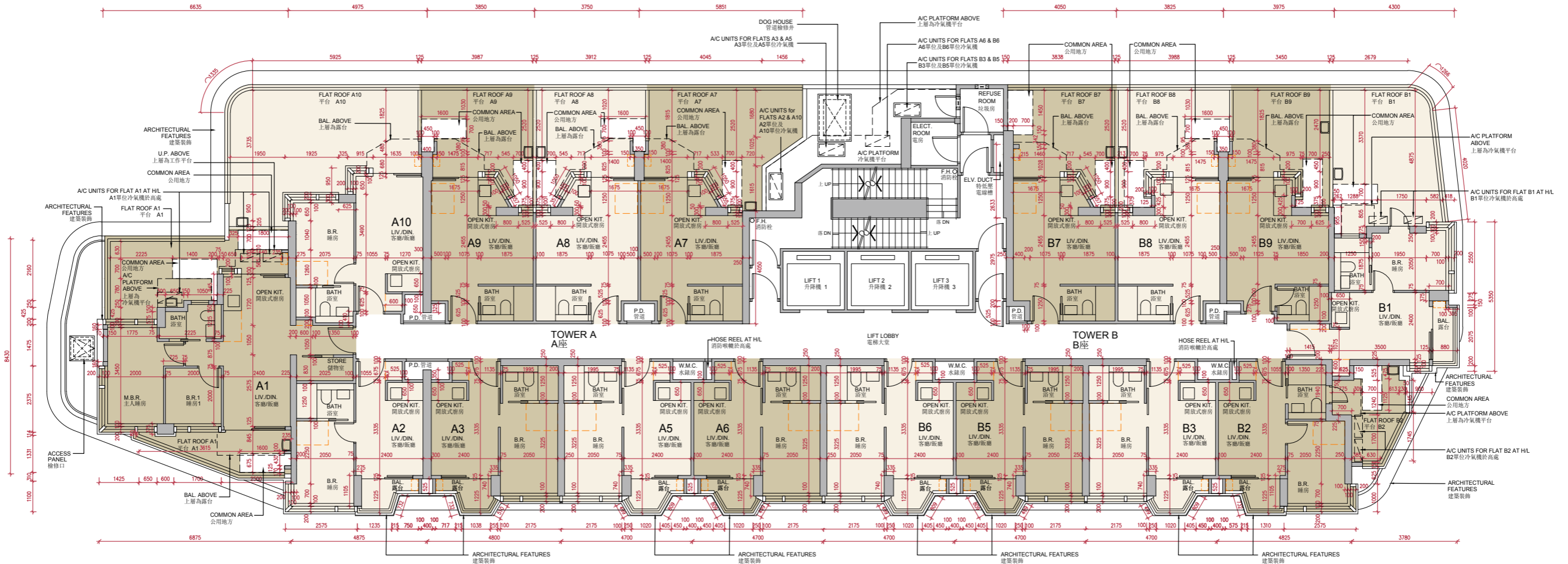


10 發展項目的住宅物業的樓面平面圖 FLOOR PLANS OF RESIDENTIAL PROPERTIES IN THE DEVELOPMENT

3樓平面圖

3/F FLOOR PLAN



比例尺 SCALE 0M (米) 5M (米)

- 備註 :
1. 平面圖所列的數字為以毫米標示之建築結構尺寸。
 2. 平台空白位置為供維修大廈設備使用的公用地方。
- Notes:
1. The dimensions in floor plans are all structural dimensions in millimeter.
 2. Blank areas on the flat roof are common areas for building facility maintenance.

10 發展項目的住宅物業的樓面平面圖

FLOOR PLANS OF RESIDENTIAL PROPERTIES IN THE DEVELOPMENT

每個住宅物業 Each Residential Property	樓層 Floor	單位 Flat								
		A1	A2	A3	A5	A6	A7	A8	A9	A10
層與層之間的高度 (毫米) Floor-to-Floor Height (mm)	3 樓 3/F	3275, 3425, 3500	3200, 3500	3500	3500	3500	3200, 3275, 3500	3200, 3275, 3500	3200, 3275, 3500	3200, 3275, 3500
樓板 (不包括灰泥) 的厚度 (毫米) Thickness of Floor Slab (excluding plaster) (mm)		125, 150, 175	150	150	150	150	150	175	175	125

每個住宅物業 Each Residential Property	樓層 Floor	單位 Flat							
		B1	B2	B3	B5	B6	B7	B8	B9
層與層之間的高度 (毫米) Floor-to-Floor Height (mm)	3 樓 3/F	3050, 3125, 3500	3425, 3500	3200, 3500	3500	3200, 3500	3200, 3275, 3500	3200, 3275, 3500	3200, 3275, 3500
樓板 (不包括灰泥) 的厚度 (毫米) Thickness of Floor Slab (excluding plaster) (mm)		150	150	150	150	150	175	175	150

因住宅物業的較高樓層的結構牆的厚度遞減，較高樓層的內部面積，一般比較低樓層的內部面積稍大。

The internal areas of the residential properties on the upper floors will generally be slightly larger than those on the lower floors because of the reducing thickness of the structural walls on the upper floors.

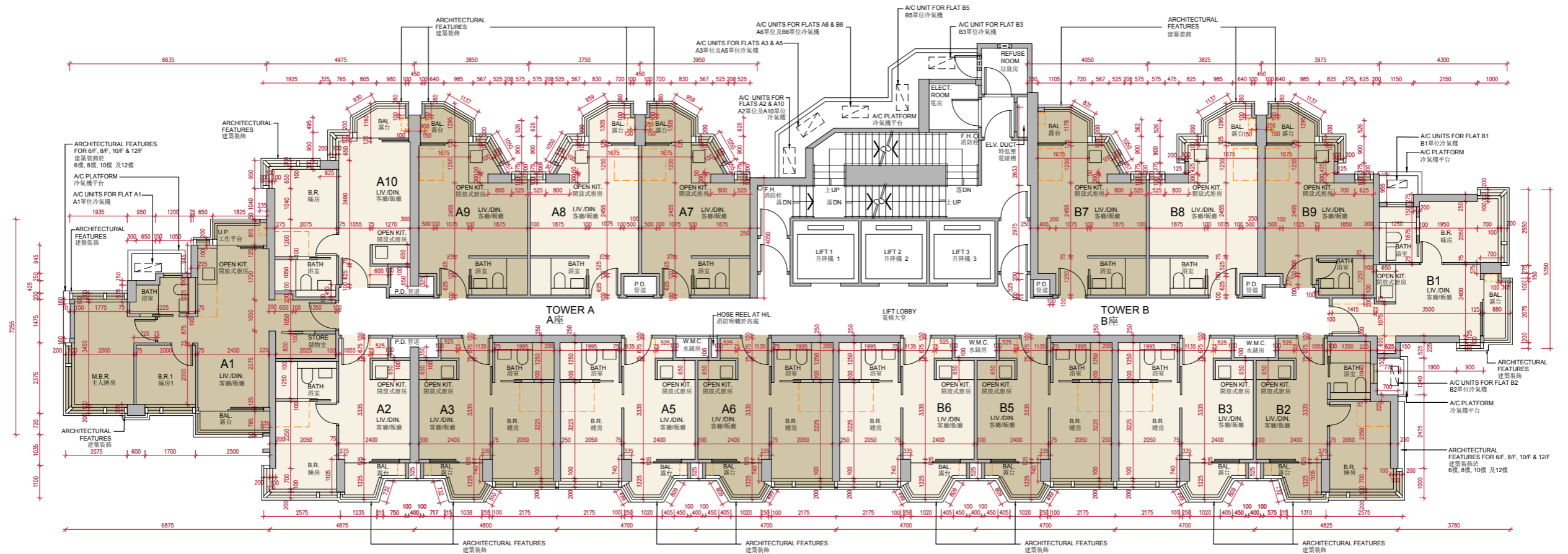
請參閱本售樓說明書第22頁為住宅物業樓面平面圖而設之備註及名詞及簡稱的圖例。

Please refer to page 22 of this sales brochure for the remarks and legends of the terms and abbreviations for the floor plans of residential properties.

10 發展項目的住宅物業的樓面平面圖 FLOOR PLANS OF RESIDENTIAL PROPERTIES IN THE DEVELOPMENT

5樓-12樓、15樓平面圖

5/F - 12/F, 15/F FLOOR PLAN



比例尺 SCALE 0M (米) 5M (米)

備註：平面圖所列的數字為以毫米標示之建築結構尺寸。
Note: The dimensions in floor plans are all structural dimensions in millimeter.

10 發展項目的住宅物業的樓面平面圖

FLOOR PLANS OF RESIDENTIAL PROPERTIES IN THE DEVELOPMENT

每個住宅物業 Each Residential Property	樓層 Floor	單位 Flat								
		A1	A2	A3	A5	A6	A7	A8	A9	A10
層與層之間的高度 (毫米) Floor-to-Floor Height (mm)	5樓 -12樓 5/F-12/F	3500	3500	3500	3500	3500	3500	3500	3500	3500
樓板 (不包括灰泥) 的厚度 (毫米) Thickness of Floor Slab (excluding plaster) (mm)		125, 150, 175	150	150	150	150	150	175	175	125

每個住宅物業 Each Residential Property	樓層 Floor	單位 Flat							
		B1	B2	B3	B5	B6	B7	B8	B9
層與層之間的高度 (毫米) Floor-to-Floor Height (mm)	5樓 -12樓 5/F-12/F	3500	3500	3500	3500	3500	3500	3500	3500
樓板 (不包括灰泥) 的厚度 (毫米) Thickness of Floor Slab (excluding plaster) (mm)		150	150	150	150	150	175	175	150

每個住宅物業 Each Residential Property	樓層 Floor	單位 Flat								
		A1	A2	A3	A5	A6	A7	A8	A9	A10
層與層之間的高度 (毫米) Floor-to-Floor Height (mm)	15樓 15/F	3500	3500	3500	3500	3500	3500	3500	3500	3500
樓板 (不包括灰泥) 的厚度 (毫米) Thickness of Floor Slab (excluding plaster) (mm)		125, 150	150	150	150	150	150	175	175	125

每個住宅物業 Each Residential Property	樓層 Floor	單位 Flat							
		B1	B2	B3	B5	B6	B7	B8	B9
層與層之間的高度 (毫米) Floor-to-Floor Height (mm)	15樓 15/F	3500	3500	3500	3500	3500	3500	3500	3500
樓板 (不包括灰泥) 的厚度 (毫米) Thickness of Floor Slab (excluding plaster) (mm)		150	150	150	150	150	175, 325	175	150

因住宅物業的較高樓層的結構牆的厚度遞減，較高樓層的內部面積，一般比較低樓層的內部面積稍大。

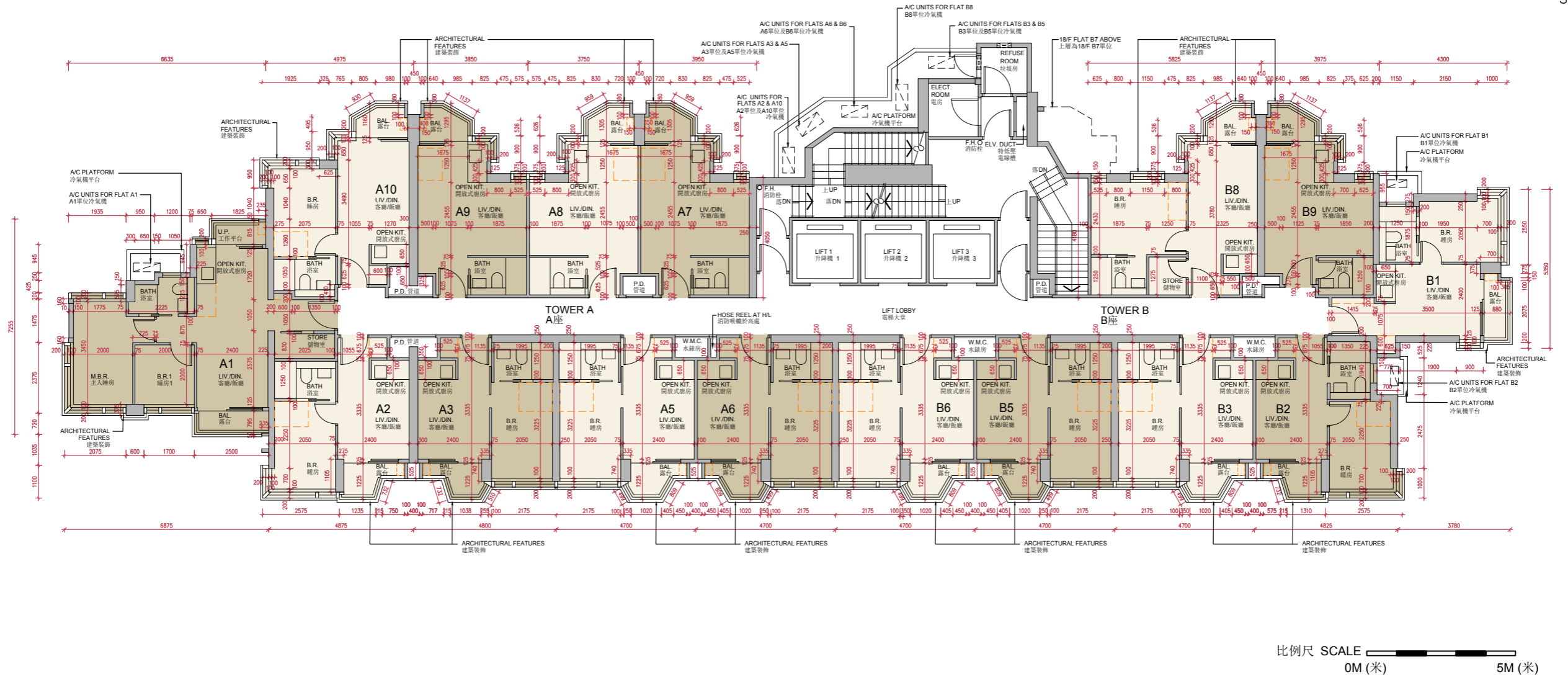
The internal areas of the residential properties on the upper floors will generally be slightly larger than those on the lower floors because of the reducing thickness of the structural walls on the upper floors.

請參閱本售樓說明書第22頁為住宅物業樓面平面圖而設之備註及名詞及簡稱的圖例。

Please refer to page 22 of this sales brochure for the remarks and legends of the terms and abbreviations for the floor plans of residential properties.

10 發展項目的住宅物業的樓面平面圖 FLOOR PLANS OF RESIDENTIAL PROPERTIES IN THE DEVELOPMENT

17樓平面圖
17/F FLOOR PLAN



備註：平面圖所列的數字為以毫米標示之建築結構尺寸。
Note: The dimensions in floor plans are all structural dimensions in millimeter.

10 發展項目的住宅物業的樓面平面圖

FLOOR PLANS OF RESIDENTIAL PROPERTIES IN THE DEVELOPMENT

每個住宅物業 Each Residential Property	樓層 Floor	單位 Flat								
		A1	A2	A3	A5	A6	A7	A8	A9	A10
層與層之間的高度 (毫米) Floor-to-Floor Height (mm)	17 樓 17/F	3500	3500	3500	3500	3500	3500	3500	3500	3500
樓板 (不包括灰泥) 的厚度 (毫米) Thickness of Floor Slab (excluding plaster) (mm)		125, 150, 175	150	150	150	150	150	175	175	125

每個住宅物業 Each Residential Property	樓層 Floor	單位 Flat						
		B1	B2	B3	B5	B6	B8	B9
層與層之間的高度 (毫米) Floor-to-Floor Height (mm)	17 樓 17/F	3500	3500	3500	3500	3500	3200, 3425, 3500	3500
樓板 (不包括灰泥) 的厚度 (毫米) Thickness of Floor Slab (excluding plaster) (mm)		150	150	150	150	150	175	150

因住宅物業的較高樓層的結構牆的厚度遞減，較高樓層的內部面積，一般比較低樓層的內部面積稍大。

The internal areas of the residential properties on the upper floors will generally be slightly larger than those on the lower floors because of the reducing thickness of the structural walls on the upper floors.

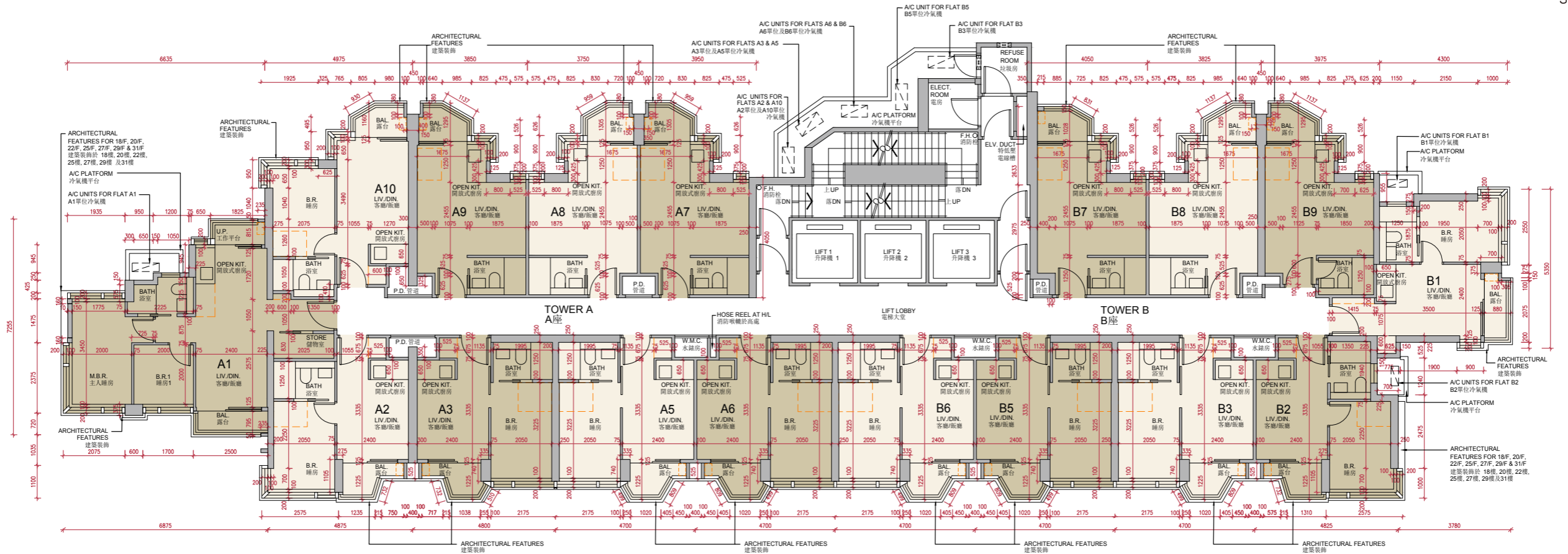
請參閱本售樓說明書第22頁為住宅物業樓面平面圖而設之備註及名詞及簡稱的圖例。

Please refer to page 22 of this sales brochure for the remarks and legends of the terms and abbreviations for the floor plans of residential properties.

10 發展項目的住宅物業的樓面平面圖 FLOOR PLANS OF RESIDENTIAL PROPERTIES IN THE DEVELOPMENT

18樓-23樓、25樓-31樓平面圖

18/F-23/F, 25/F-31/F FLOOR PLAN



比例尺 SCALE 0M (米) 5M (米)

備註：平面圖所列的數字為以毫米標示之建築結構尺寸。
Note: The dimensions in floor plans are all structural dimensions in millimeter.

10 發展項目的住宅物業的樓面平面圖

FLOOR PLANS OF RESIDENTIAL PROPERTIES IN THE DEVELOPMENT

每個住宅物業 Each Residential Property	樓層 Floor	單位 Flat									
		A1	A2	A3	A5	A6	A7	A8	A9	A10	
層與層之間的高度 (毫米) Floor-to-Floor Height (mm)	18樓-23樓、 25樓-30樓 18/F-23/F, 25/F-30/F	3500	3500	3500	3500	3500	3500	3500	3500	3500	3500
樓板 (不包括灰泥) 的厚度 (毫米) Thickness of Floor Slab (excluding plaster) (mm)		125, 150, 175	150	150	150	150	150	175	175	125	

每個住宅物業 Each Residential Property	樓層 Floor	單位 Flat								
		B1	B2	B3	B5	B6	B7	B8	B9	
層與層之間的高度 (毫米) Floor-to-Floor Height (mm)	18樓-23樓、 25樓-30樓 18/F-23/F, 25/F-30/F	3500	3500	3500	3500	3500	3500	3500	3500	3500
樓板 (不包括灰泥) 的厚度 (毫米) Thickness of Floor Slab (excluding plaster) (mm)		150	150	150	150	150	175	175	150	

每個住宅物業 Each Residential Property	樓層 Floor	單位 Flat									
		A1	A2	A3	A5	A6	A7	A8	A9	A10	
層與層之間的高度 (毫米) Floor-to-Floor Height (mm)	31樓 31/F	3500	3500	3200, 3275, 3425, 3500	3200, 3275, 3425, 3500	3275, 3500	3500	3500	3500	3500	
樓板 (不包括灰泥) 的厚度 (毫米) Thickness of Floor Slab (excluding plaster) (mm)		125, 150, 175	150	150	150	150	150	175	175	125	

每個住宅物業 Each Residential Property	樓層 Floor	單位 Flat								
		B1	B2	B3	B5	B6	B7	B8	B9	
層與層之間的高度 (毫米) Floor-to-Floor Height (mm)	31樓 31/F	3500	3500	3200, 3275, 3425, 3500	3200, 3275, 3425, 3500	3275, 3500	3500	3500	3500	
樓板 (不包括灰泥) 的厚度 (毫米) Thickness of Floor Slab (excluding plaster) (mm)		150	150	150	150	150	175	175	150	

因住宅物業的較高樓層的結構牆的厚度遞減，較高樓層的內部面積，一般比較低樓層的內部面積稍大。

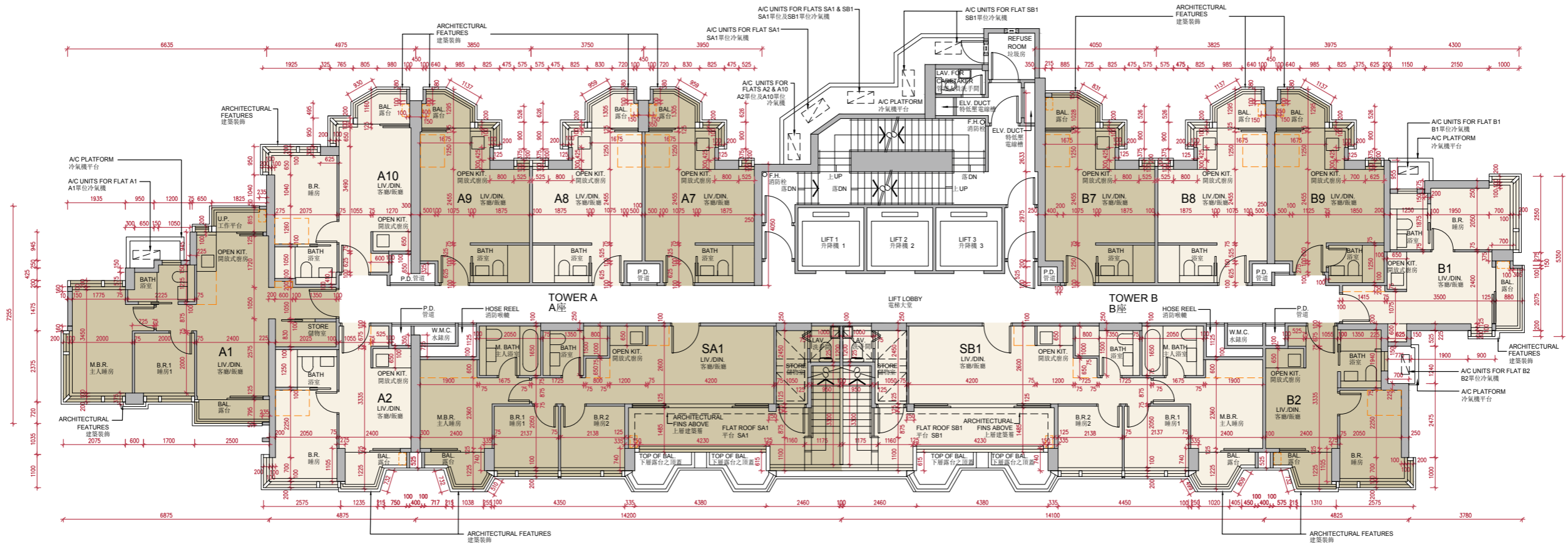
The internal areas of the residential properties on the upper floors will generally be slightly larger than those on the lower floors because of the reducing thickness of the structural walls on the upper floors.

請參閱本售樓說明書第22頁為住宅物業樓面平面圖而設之備註及名詞及簡稱的圖例。

Please refer to page 22 of this sales brochure for the remarks and legends of the terms and abbreviations for the floor plans of residential properties.

10 發展項目的住宅物業的樓面平面圖 FLOOR PLANS OF RESIDENTIAL PROPERTIES IN THE DEVELOPMENT

32樓平面圖 32/F FLOOR PLAN



備註：平面圖所列的數字為以毫米標示之建築結構尺寸。
Note: The dimensions in floor plans are all structural dimensions in millimeter.

10 發展項目的住宅物業的樓面平面圖

FLOOR PLANS OF RESIDENTIAL PROPERTIES IN THE DEVELOPMENT

每個住宅物業 Each Residential Property	樓層 Floor	單位 Flat						
		A1	A2	SA1	A7	A8	A9	A10
層與層之間的高度 (毫米) Floor-to-Floor Height (mm)	32 樓 32/F	3825	3825	3825	3825	3825	3825	3825
樓板 (不包括灰泥) 的厚度 (毫米) Thickness of Floor Slab (excluding plaster) (mm)		200	200	200	200	200	200	200

每個住宅物業 Each Residential Property	樓層 Floor	單位 Flat					
		B1	B2	SB1	B7	B8	B9
層與層之間的高度 (毫米) Floor-to-Floor Height (mm)	32 樓 32/F	3825	3825	3825	3825	3825	3825
樓板 (不包括灰泥) 的厚度 (毫米) Thickness of Floor Slab (excluding plaster) (mm)		200	200	200	200	200	200

因住宅物業的較高樓層的結構牆的厚度遞減，較高樓層的內部面積，一般比較低樓層的內部面積稍大。

The internal areas of the residential properties on the upper floors will generally be slightly larger than those on the lower floors because of the reducing thickness of the structural walls on the upper floors.

請參閱本售樓說明書第22頁為住宅物業樓面平面圖而設之備註及名詞及簡稱的圖例。

Please refer to page 22 of this sales brochure for the remarks and legends of the terms and abbreviations for the floor plans of residential properties.

