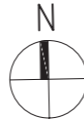
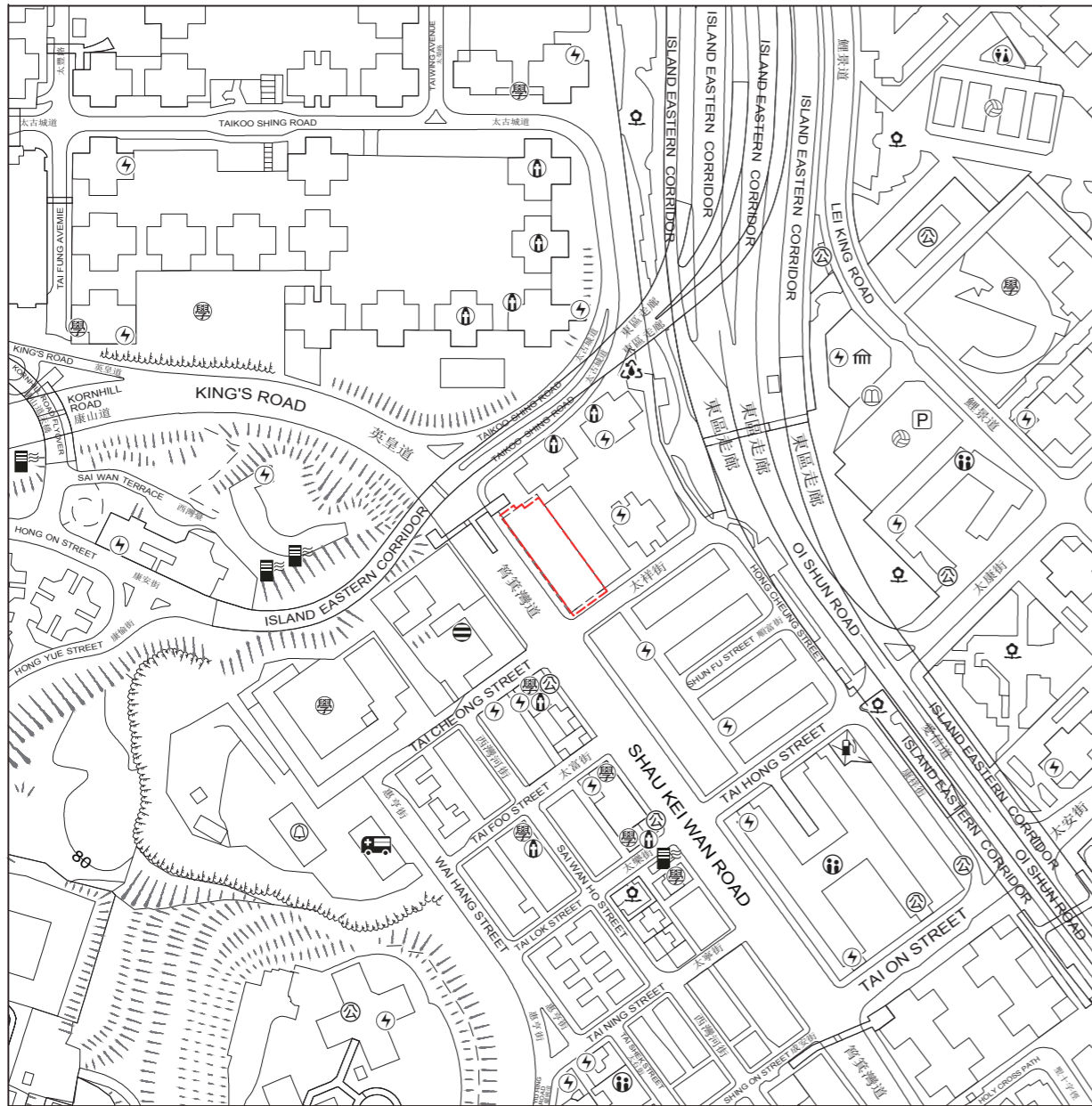


6

發展項目的所在位置圖 LOCATION PLAN OF THE DEVELOPMENT



資料 / 地圖 / 鳥瞰照片由香港地理數據站提供，香港特別行政區政府為知識產權擁有人。
The Data/Map/Aerial Photograph is/are provided by the Hong Kong GeoData Store and intellectual property rights are owned by the Government of the HKSAR.

此所在位置圖參考測繪圖編號 T11-SE-A，經修正處理。
This location plan is made with reference to Survey Sheet No. T11-SE-A with adjustments where necessary.

圖例 NOTATION

- ⚡ 發電廠 (包括電力分站) Power Plant (including Electricity Sub-stations)
- 📖 圖書館 Library
- P 公眾停車場 (包括貨車停泊處) Public Carpark (including Lorry Park)
- 🚻 公廁 Public Convenience
- ⚙️ 公用事業設施裝置 Public Utility Installation
- 🏛️ 宗教場所 (包括教堂、廟宇及祠堂) Religious Institution (including Church, Temple and Tsz Tong)
- 🎓 學校 (包括幼稚園) School (including Kindergarten)
- 🏠 社會福利設施 (包括老人中心及弱智人士護理院) Social Welfare Facilities (including Elderly Centre and Home for the Mentally Disabled)
- 🌳 公園 Public Park
- 🛢️ 油站 Petrol Filling Station
- 🏛️ 博物館 Museum
- 🏊 體育設施 (包括運動場及游泳池) Sports Facilities (including Sports Ground and Swimming Pool)
- 🚪 香港鐵路的通風井 Ventilation Shaft for the Mass Transit Railway
- 🚑 救護車站 Ambulance Depot
- 👮 警署 Police Station
- 🚒 消防局 Fire Station
- 🗑️ 污水處理廠及設施 Sewage Treatment Works and Facilities

發展項目的位置
Location of the Development

比例：0M/米
Scale : 250M/米

備註：因技術性問題，此位置圖所顯示的範圍超過《一手住宅物業銷售條例》的規定。
Note : Due to technical reasons, this location plan has shown more than the area required under the Residential Properties (First-hand Sales) Ordinance.

7 發展項目的鳥瞰照片 AERIAL PHOTOGRAPH OF THE DEVELOPMENT



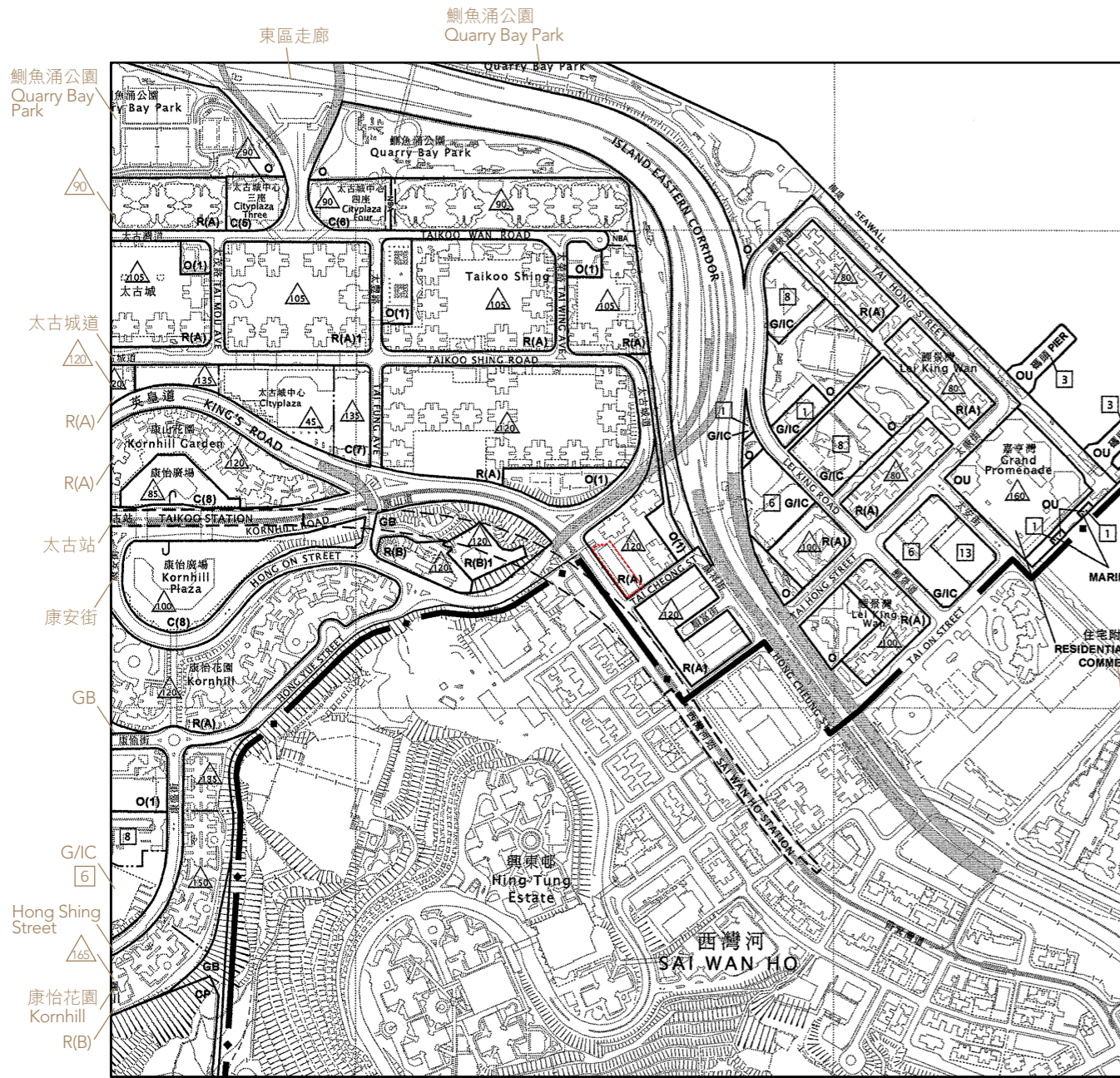
● 發展項目的位置
Location of the Development

備註：因技術性問題，此鳥瞰照片所顯示的範圍超過《一手住宅物業銷售條例》的規定。
Note : Due to technical reasons, this aerial photograph has shown more than the area required under the Residential Properties (First-hand Sales) Ordinance.

資料 / 地圖 / 鳥瞰照片由香港地理數據站提供，香港特別行政區政府為知識產權擁有人。
The Data/Map/Aerial Photograph is/are provided by the Hong Kong GeoData Store and intellectual property rights are owned by the Government of the HKSAR.

香港特別行政區政府地政總署測繪處版權所有，未經許可，不得複製。
Survey and Mapping Office, Lands Department, The Government of HKSAR © Copyright reserved – reproduction by permission only.

摘錄自地政總署測繪處於2021年1月6日在6,900呎飛行高度拍攝之鳥瞰照片，編號為E118086C。
Adopted from part of the aerial photograph taken by the Survey and Mapping Office of Lands Department at a flying height of 6,900 feet, Photo No. E118086C, dated 6 January 2021.



摘錄自 2010 年 9 月 17 日刊憲之鯽魚涌 (香港規劃區第 21 區) 分區計劃大綱核准圖，圖則編號為 S/H21/28，經修正處理。

Extracted from the approved Quarry Bay (Hong Kong Planning Area No. 21) Outline Zoning Plan, Plan No. S/H21/28, gazetted on 17 September 2010, with adjustments where necessary.

圖例 NOTATION

地帶 ZONES

- C 商業
Commercial
- R(A) 住宅(甲類)
Residential (Group A)
- R(B) 住宅(乙類)
Residential (Group B)
- G/IC 政府、機構或社區
Government, Institution or Community
- O 休憩用地
Open Space
- OU 其他指定用途
Other Specified Uses
- GB 綠化地帶
Green Belt
- CP 郊野公園
Country Park

其他 MISCELLANEOUS

- 規劃範圍界線
Boundary of Planning Scheme
- 建築物高度管制區界線
Building Height Control Zone Boundary
- △120 最高建築物高度(在主水平基準上若干米)
Maximum Building Height (In metres above Principal Datum)
- 1 最高建築物高度(樓層數目)
Maximum Building Height (In number of storeys)
- NBA 非建築用地
Non-Building Area

交通 COMMUNICATIONS

- STATION 鐵路及車站 (地下) Railway and Station (Underground)
- 主要道路及路口 Major Road and Junction
- 高架道路 Elevated Road

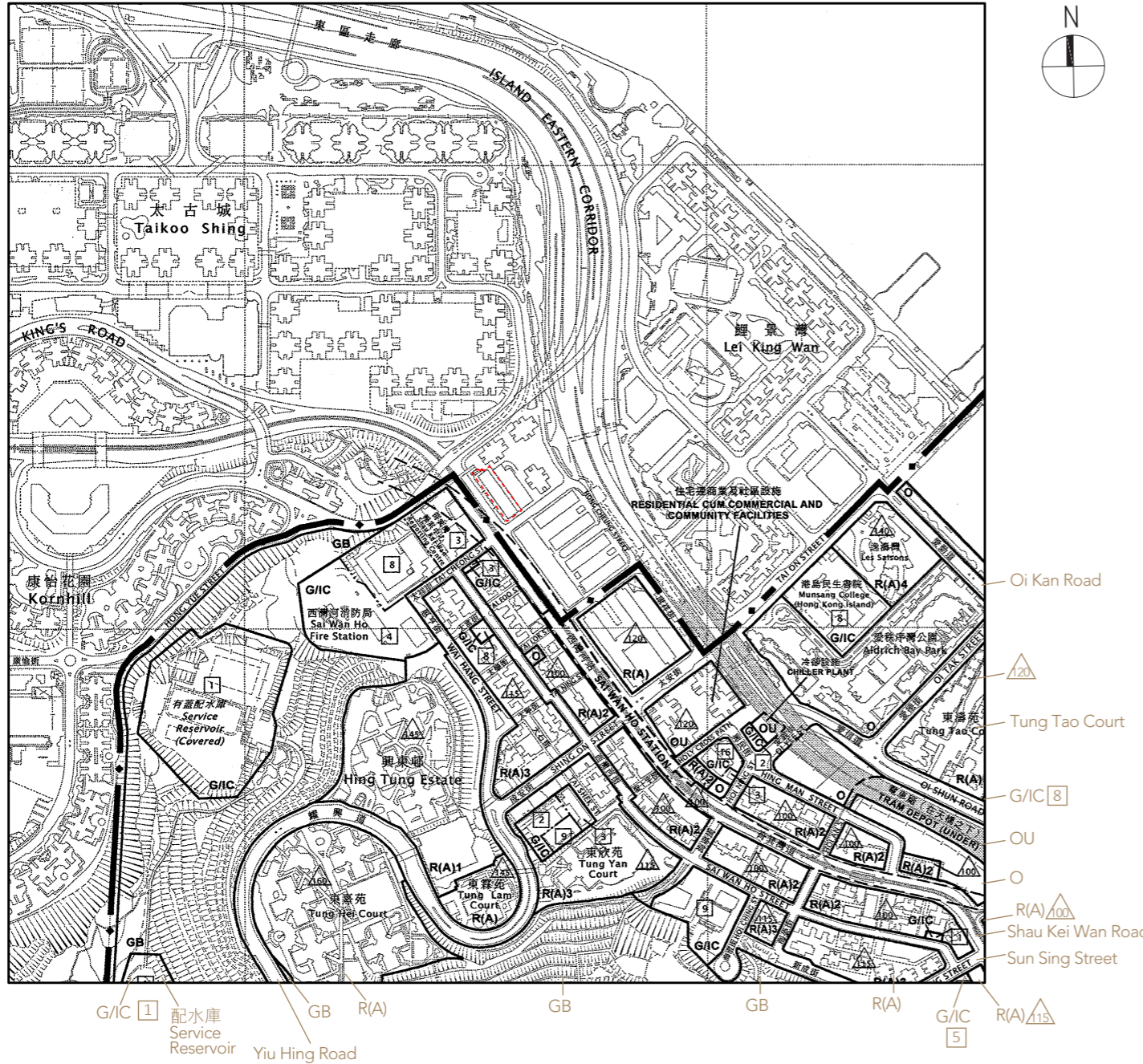
 發展項目的位置
Location of the Development

比例：0M/米
Scale: 500M/米

住宅附連公共車輛總站、商業及社區設施
Residential Cum Public Transport Terminus,
Commercial And Community Facilities

備註：因技術性問題，此分區計劃大綱圖所顯示的範圍超過《一手住宅物業銷售條例》的規定。

Note: Due to technical reasons, this outline zoning plan has shown more than the area required under the Residential Properties (First-hand Sales) Ordinance.



摘錄自 2015 年 4 月 17 日刊憲之筲箕灣 (港島規劃區第 9 區) 分區計劃大綱核准圖，圖則編號為 S/H9/18，經修正處理。

Extracted from the approved Shau Kei Wan (Hong Kong Planning Area No. 9) Outline Zoning Plan, Plan No. S/H9/18, gazetted on 17 April 2015, with adjustments where necessary.

圖例 NOTATION

地帶 ZONES

R(A) 住宅(甲類)
Residential (Group A)

G/IC 政府、機構或社區
Government, Institution or Community

O 休憩用地
Open Space

OU 其他指定用途
Other Specified Uses

GB 綠化地帶
Green Belt

其他 MISCELLANEOUS

規劃範圍界線
Boundary of Planning Scheme

建築物高度管制區界線
Building Height Control Zone Boundary

最高建築物高度(在主水平基準上若干米)
Maximum Building Height (In metres above Principal Datum)

最高建築物高度(樓層數目)
Maximum Building Height (In number of storeys)

交通 COMMUNICATIONS

鐵路及車站(地下) Railway and Station (Underground)

主要道路及路口 Major Road and Junction

高架道路 Elevated Road

發展項目的位置
Location of the Development

比例：0M/米
Scale: 500M/米

備註：因技術性問題，此分區計劃大綱圖所顯示的範圍超過《一手住宅物業銷售條例》的規定。
Note: Due to technical reasons, this outline zoning plan has shown more than the area required under the Residential Properties (First-hand Sales) Ordinance.