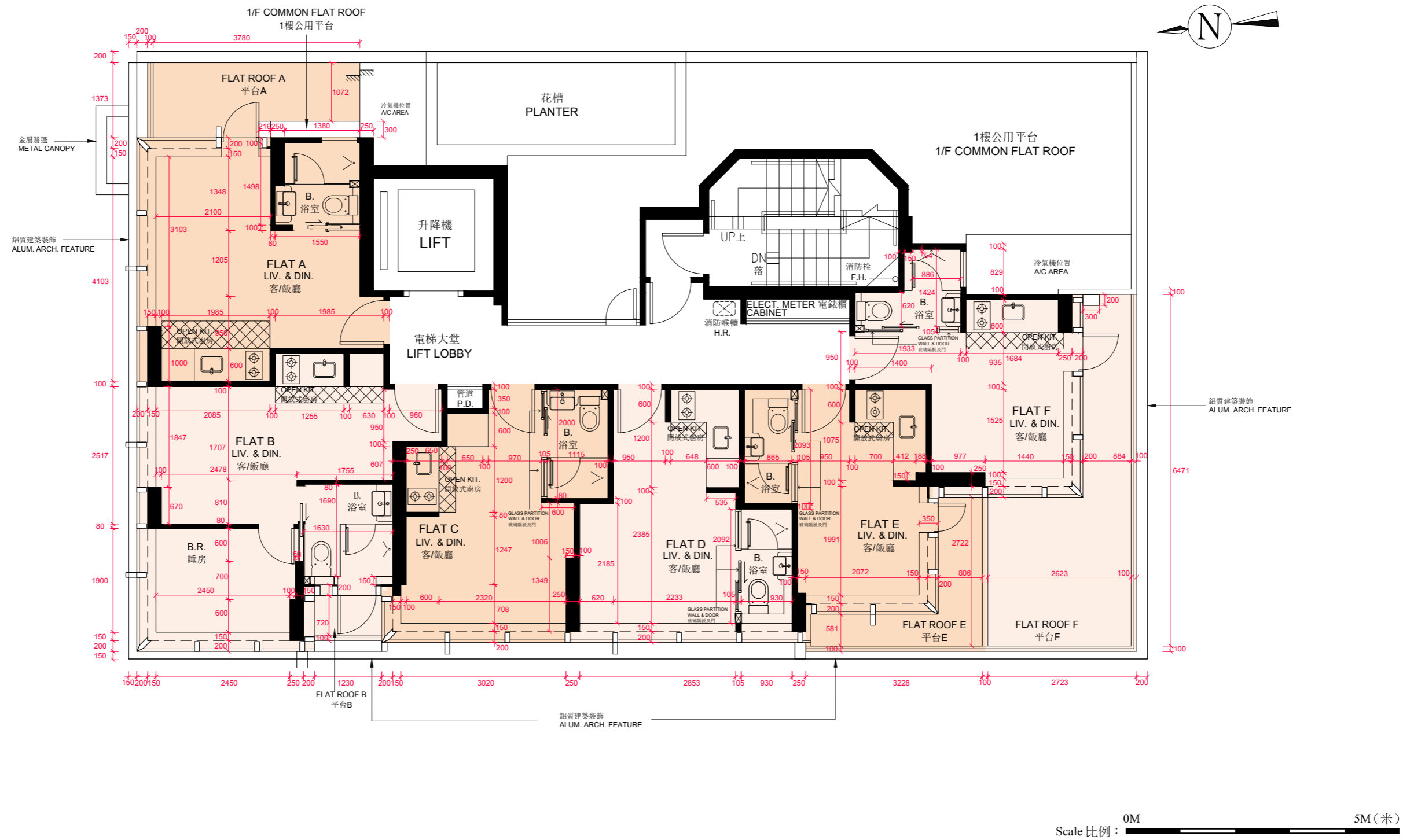


FLOOR PLANS OF RESIDENTIAL PROPERTIES IN THE DEVELOPMENT

發展項目的住宅物業的樓面平面圖

1/F
1樓



FLOOR PLANS OF RESIDENTIAL PROPERTIES IN THE DEVELOPMENT

發展項目的住宅物業的樓面平面圖

| Description of Residential Property 物業的描述 | Floor 樓層 | Flat 單位 | | | | | |
|--|-------------|--|--|---------------------------|-------------------------------------|--------------------------------------|--------------------------------------|
| | | A | B | C | D | E | F |
| Thickness of the Floor Slabs (excluding plaster) of each residential property (mm) 每個住宅物業的樓板 (不包括灰泥) 的厚度 (毫米) | 1/F 1樓 | 150 | | | | | |
| The floor-to-floor height (refers to the height between the top surface of the structural slab of a floor and the top surface of the structural slab of its immediate upper floor) of each residential property (mm) 每個住宅物業的層與層之間的高度(指該樓層之石屎地台面與上一層石屎地台面之高度距離) (毫米) | 1/F 1樓 | □3,080 □3,180 △3,280 □3,380 △3,480 | □3,080 △3,180 △3,280 □3,380 △3,480 | 3,080 △3,180 △3,480 | 3,080 □3,080 △3,180 △3,480 | □3,080 △3,180 □3,380 △3,480 | □3,080 △3,180 □3,380 △3,480 |

The internal areas of the residential properties on the upper floors will generally be slightly larger than those on the lower floors because of the reducing thickness of the structural walls on the upper floors (Note: This statement required under section 10(2)(e) in part 1 of Schedule 1 of the Residential Properties (First-hand Sales) Ordinance is not applicable to the Development.)

因住宅物業的較高樓層的結構牆的厚度遞減，較高樓層的內部面積，一般比較低層的內部面積較大。（註：此根據《一手住宅物業銷售條例》附表1第一部第10(2)(e)條所規定的陳述並不適用於本發展項目。）

Notes:

- The internal ceiling height within residential properties may vary due to structural, architectural and/or decoration design variations.
- The dimensions in the floor plans are all structural dimension in millimeter.
- Please refer to page 24 of this sales brochure for legend of the terms and abbreviations shown in the floor plan above and the explanatory notes that are applicable thereto.
- Inclusive of the thickness of light weight concrete fill on sunken slab of this floor 300mm.
- △ Inclusive of the thickness of light weight concrete fill on sunken slab of this floor 400mm.

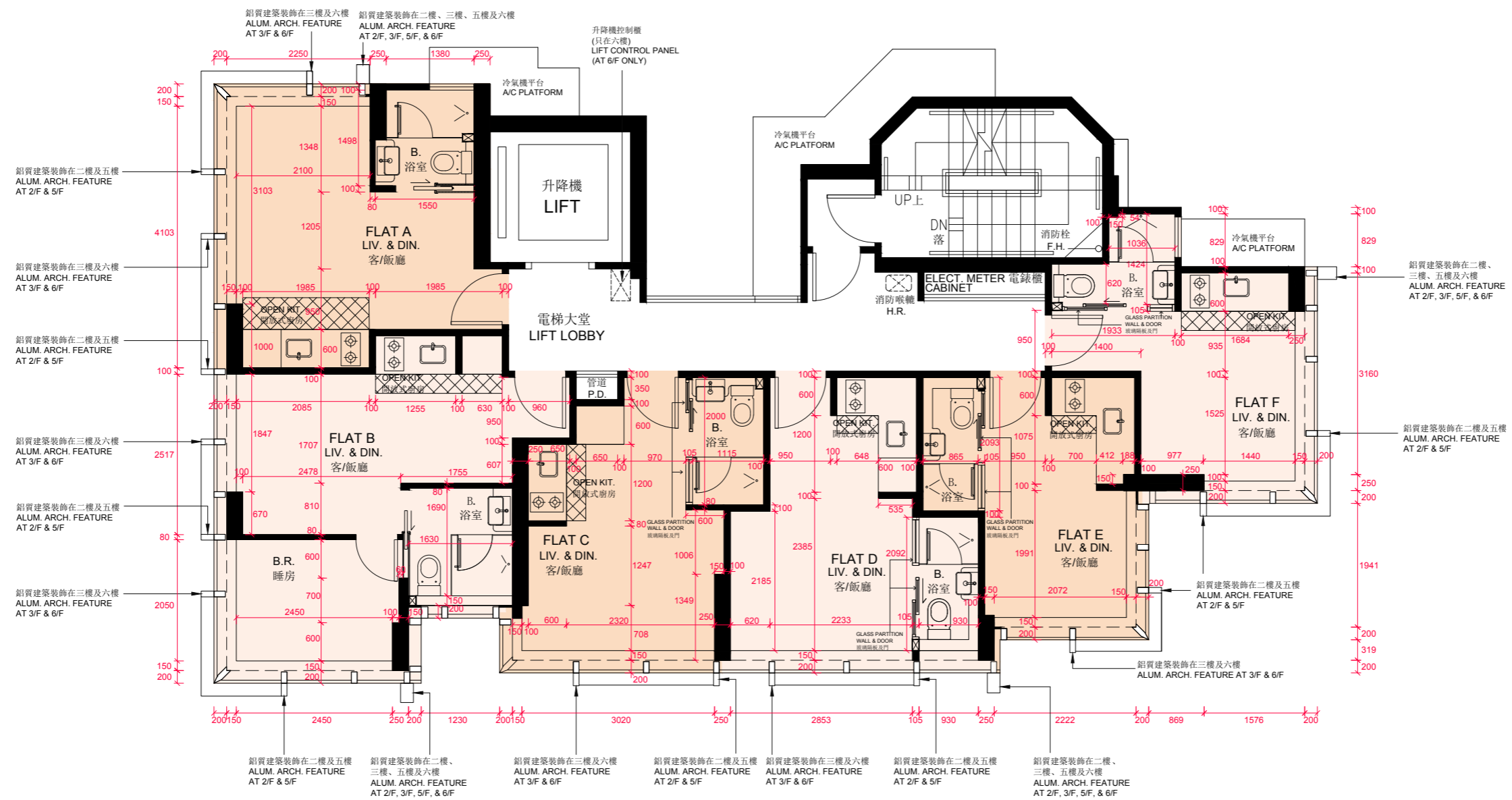
備註：

- 住宅物業之天花高度將會因應其結構、建築及／或裝修設計上的差異而有所不同。
- 樓面平面圖所列之尺寸為以毫米標示之建築結構尺寸。
- 以上平面圖中顯示之名詞、簡稱及其適用的附註，請參閱本售樓說明書第24頁。
- 包括本層跌級樓板之輕質混凝土填充層厚度300毫米。
- △ 包括本層跌級樓板之輕質混凝土填充層厚度400毫米。

FLOOR PLANS OF RESIDENTIAL PROPERTIES IN THE DEVELOPMENT

發展項目的住宅物業的樓面平面圖

2/F - 3/F & 5/F - 6/F
2樓至3樓及5樓至6樓



Scale 比例: 0M 5M (米)