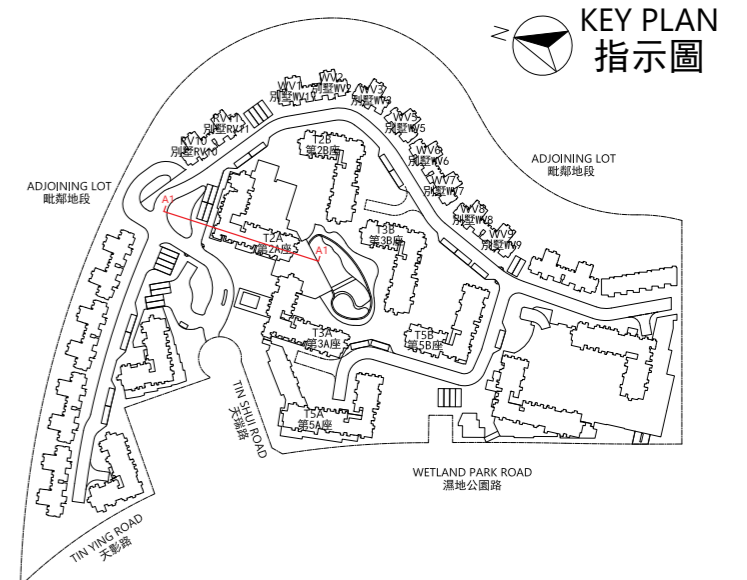
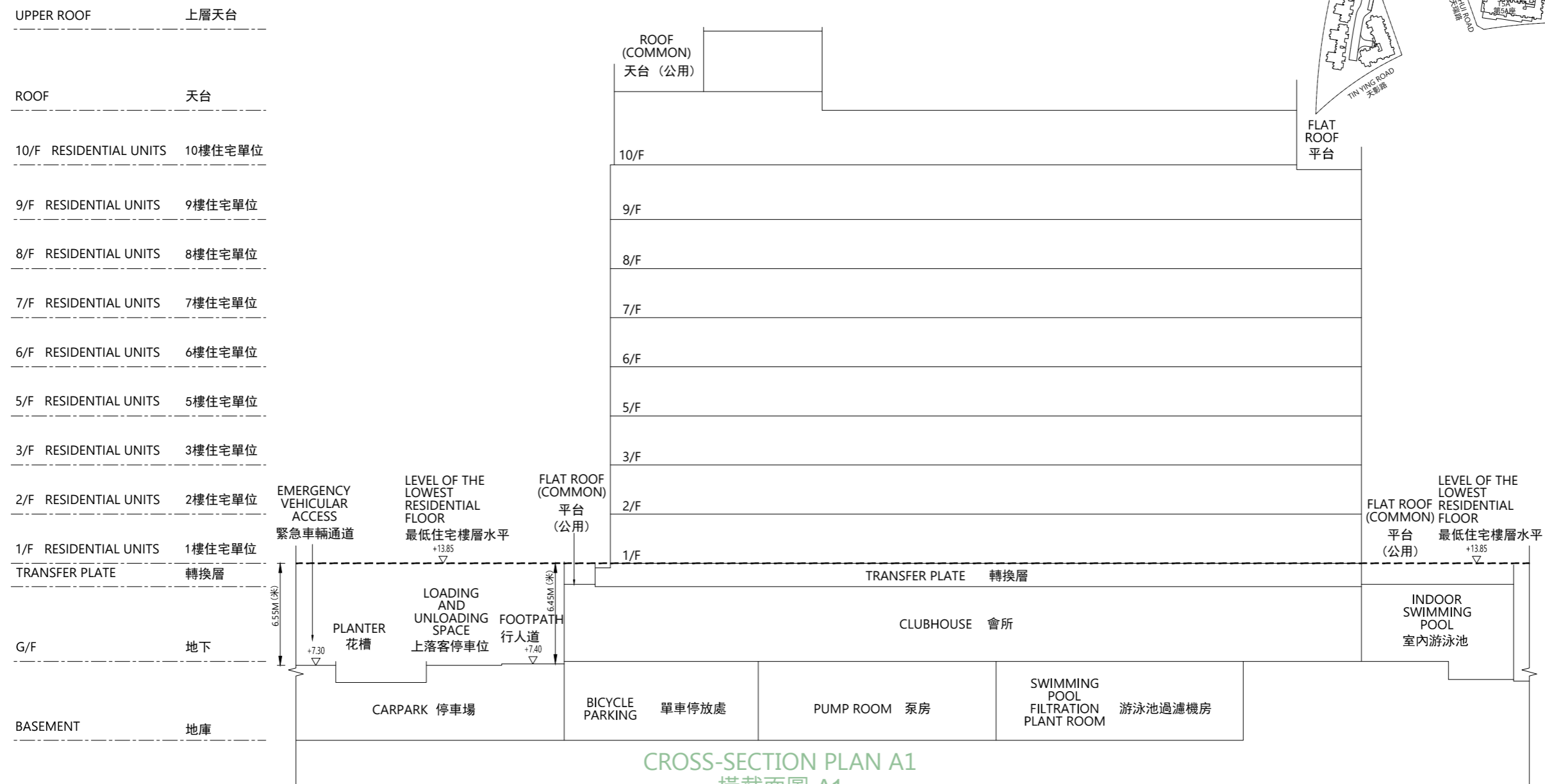


CROSS-SECTION PLAN OF BUILDING IN THE PHASE 期數中的建築物的橫截面圖

T2A
第2A座



CROSS-SECTION PLAN A1
橫截面圖 A1

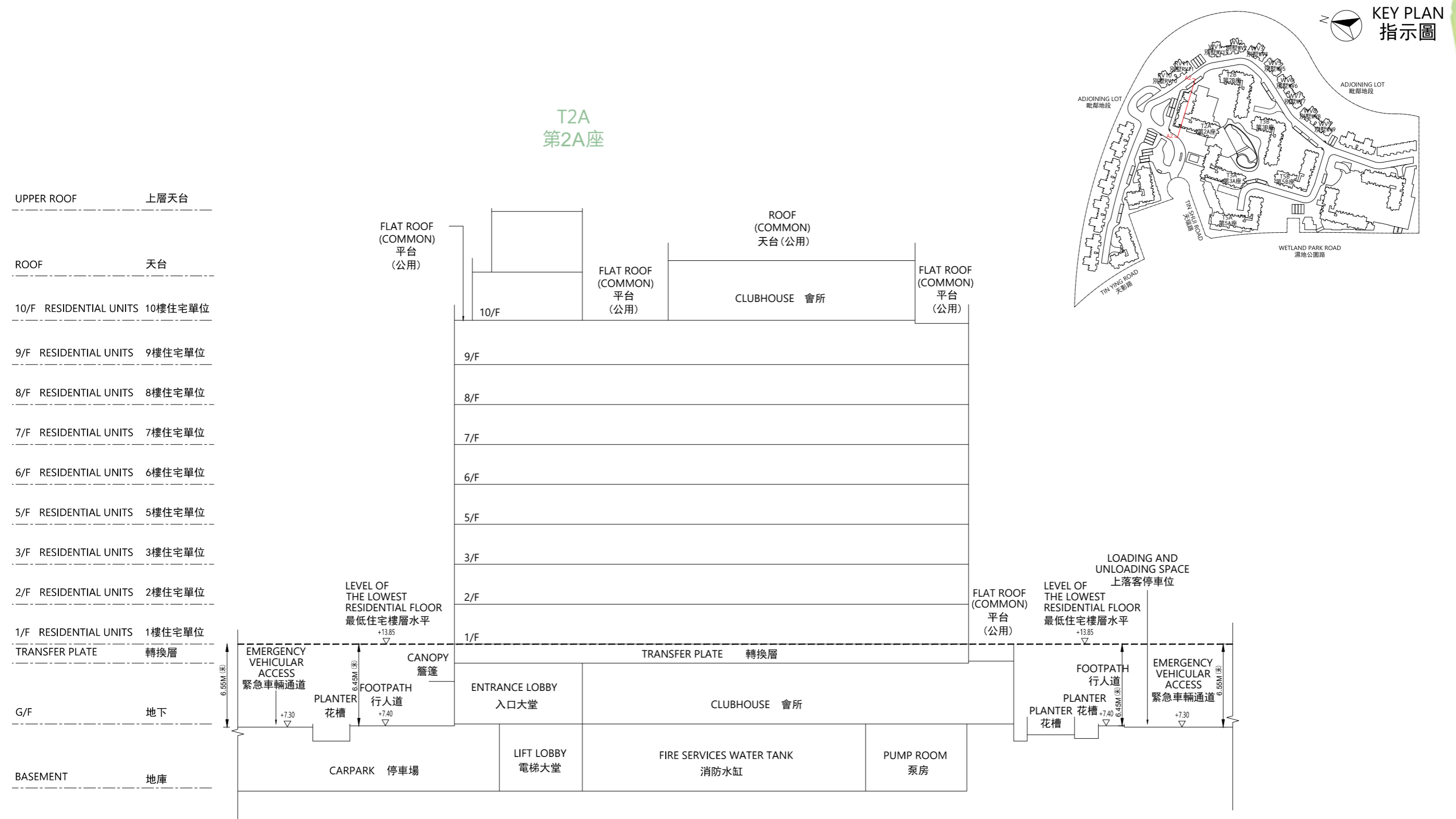
NOTES:

1. ▽ Denotes height (in metres) above the Hong Kong Principal Datum.
2. - - Dotted line denotes the level of the lowest residential floor of the building in the Phase.
3. The part of Emergency Vehicular Access adjacent to the building is 7.30 metres above the Hong Kong Principal Datum.
4. The part of footpath adjacent to the building is 7.40 metres above the Hong Kong Principal Datum.

備註:

1. ▽ 代表香港主水平基準以上的高度(米)。
2. - - 虛線代表期數中建築物之最低住宅樓層水平。
3. 毗連建築物的一段緊急車輛通道為香港主水平基準以上7.30米。
4. 毗連建築物的一段行人道為香港主水平基準以上7.40米。

CROSS-SECTION PLAN OF BUILDING IN THE PHASE 期數中的建築物的橫截面圖



NOTES:

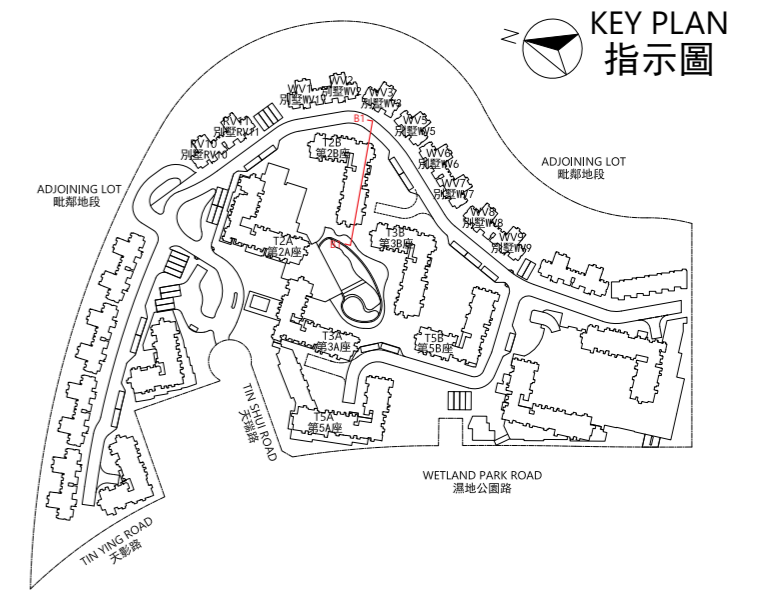
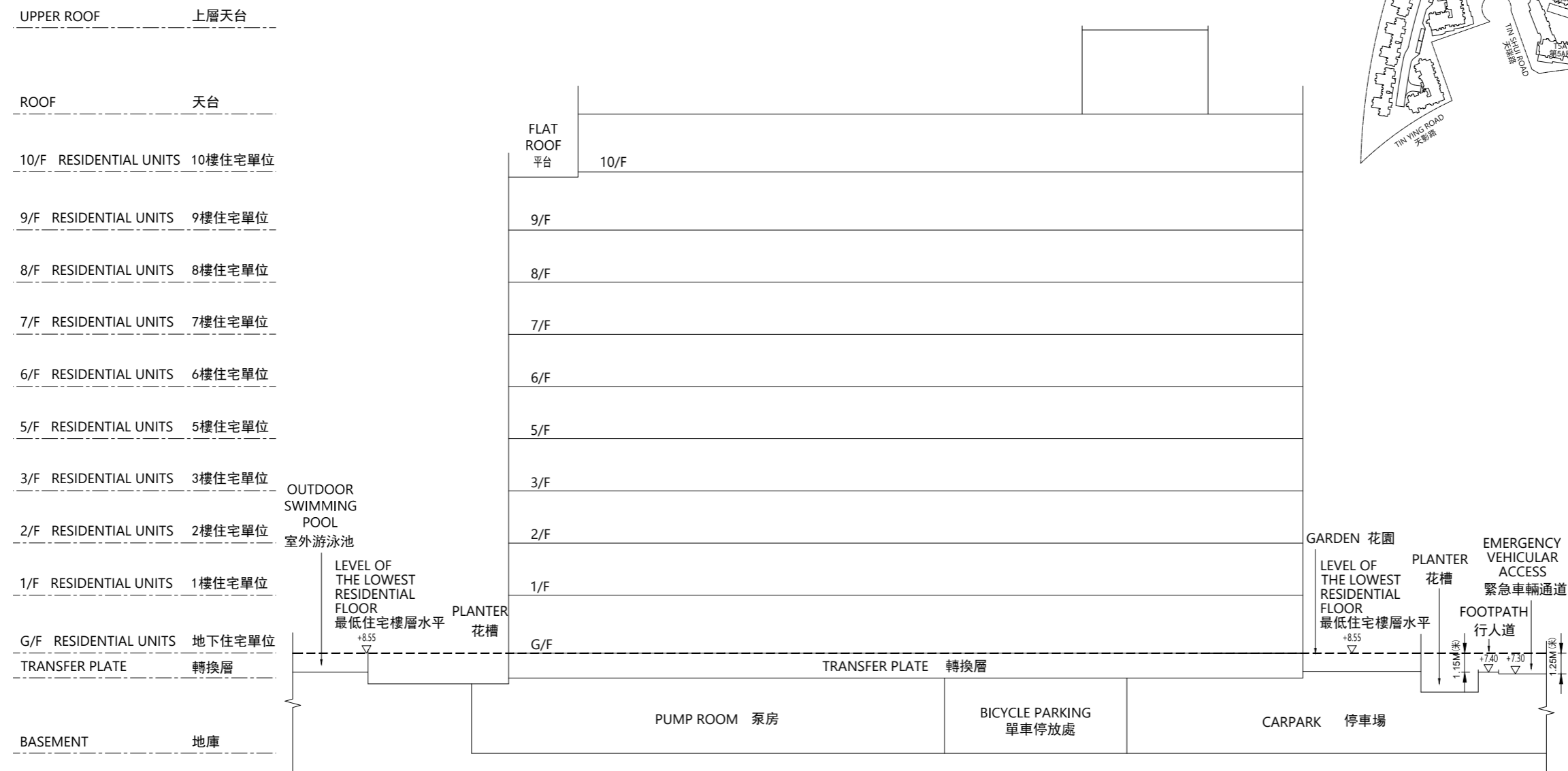
1. ▽ Denotes height (in metres) above the Hong Kong Principal Datum.
2. --- Dotted line denotes the level of the lowest residential floor of the building in the Phase.
3. The two parts of Emergency Vehicular Access adjacent to the building are both 7.30 metres above the Hong Kong Principal Datum.
4. The two parts of footpath adjacent to the building are both 7.40 metres above the Hong Kong Principal Datum.

備註:

1. ▽ 代表香港主水平基準以上的高度(米)。
2. --- 虛線代表期數中建築物之最低住宅樓層水平。
3. 毗連建築物的兩段緊急車輛通道均為香港主水平基準以上7.30米。
4. 毗連建築物的兩段行人道均為香港主水平基準以上7.40米。

CROSS-SECTION PLAN OF BUILDING IN THE PHASE 期數中的建築物的橫截面圖

T2B
第2B座



CROSS-SECTION PLAN B1
橫截面圖 B1

NOTES:

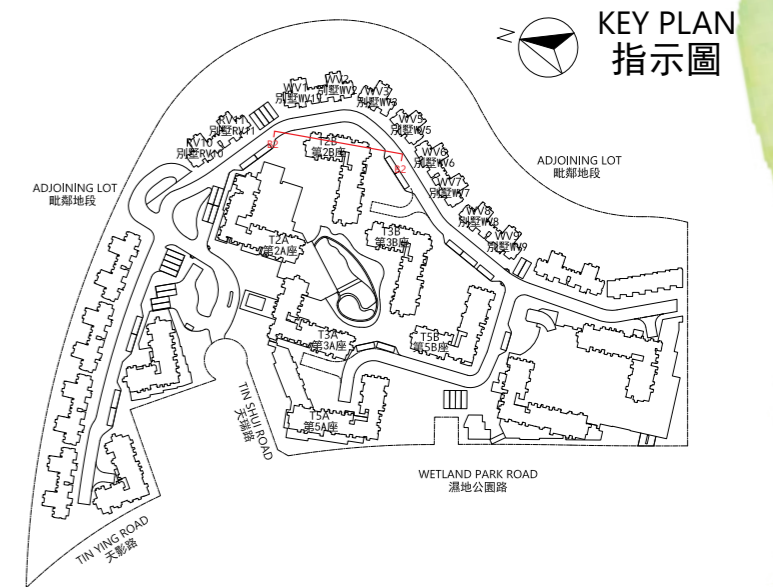
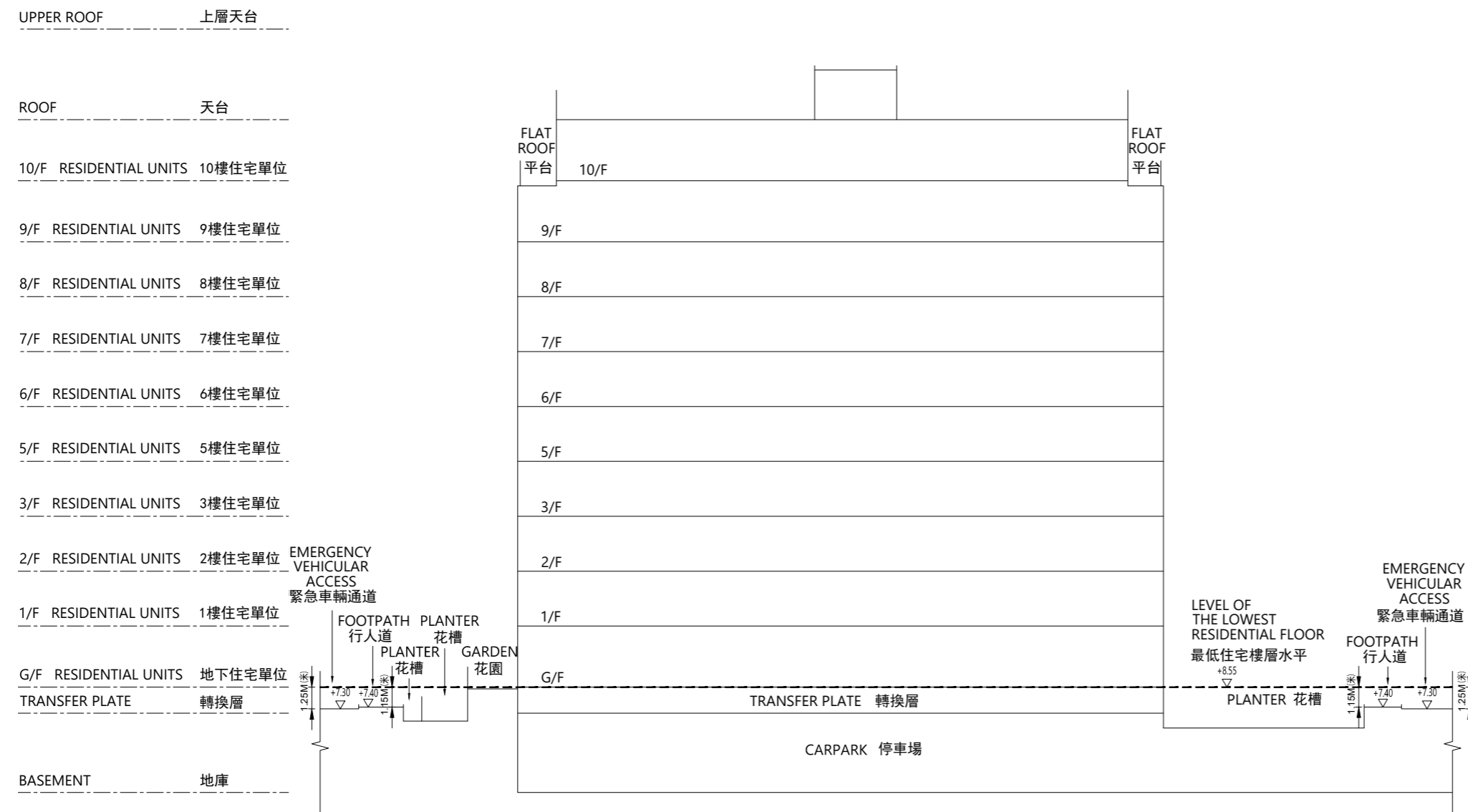
1. ∇ Denotes height (in metres) above the Hong Kong Principal Datum.
2. - - Dotted line denotes the level of the lowest residential floor of the building in the Phase.
3. The part of Emergency Vehicular Access adjacent to the building is 7.30 metres above the Hong Kong Principal Datum.
4. The part of footpath adjacent to the building is 7.40 metres above the Hong Kong Principal Datum.

備註:

1. ∇ 代表香港主水平基準以上的高度(米)。
2. - - 虛線代表期數中建築物之最低住宅樓層水平。
3. 毗連建築物的一段緊急車輛通道為香港主水平基準以上7.30米。
4. 毗連建築物的一段行人道為香港主水平基準以上7.40米。

CROSS-SECTION PLAN OF BUILDING IN THE PHASE 期數中的建築物的橫截面圖

T2B
第2B座



CROSS-SECTION PLAN B2
橫截面圖 B2

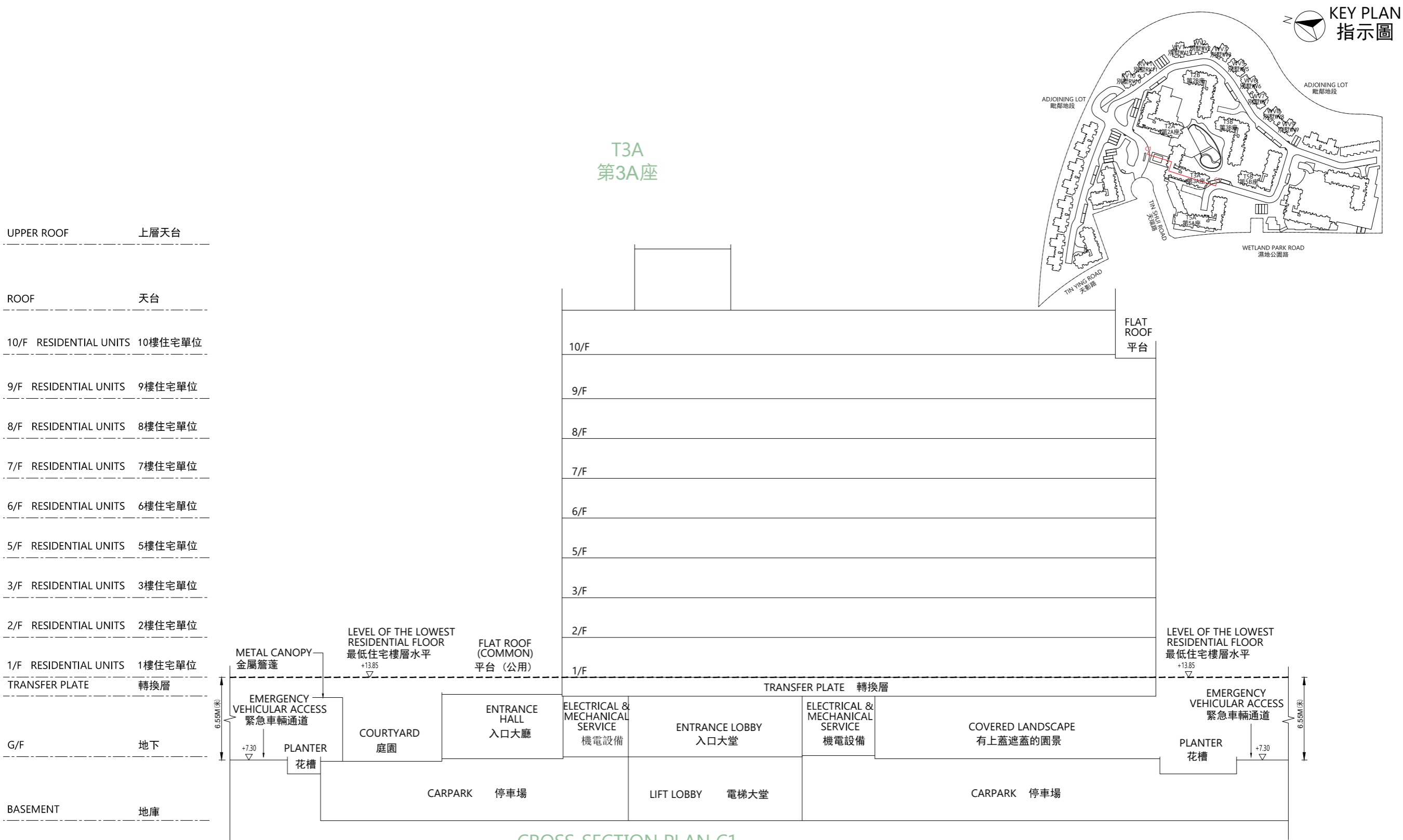
NOTES:

1. ▽ Denotes height (in metres) above the Hong Kong Principal Datum.
2. --- Dotted line denotes the level of the lowest residential floor of the building in the Phase.
3. The two parts of Emergency Vehicular Access adjacent to the building are both 7.30 metres above the Hong Kong Principal Datum.
4. The two parts of footpath adjacent to the building are both 7.40 metres above the Hong Kong Principal Datum.

備註:

1. ▽ 代表香港主水平基準以上的高度(米)。
2. --- 虛線代表期數中建築物之最低住宅樓層水平。
3. 毗連建築物的兩段緊急車輛通道均為香港主水平基準以上7.30米。
4. 毗連建築物的兩段行人道均為香港主水平基準以上7.40米。

CROSS-SECTION PLAN OF BUILDING IN THE PHASE 期數中的建築物的橫截面圖



CROSS-SECTION PLAN C1
橫截面圖 C1

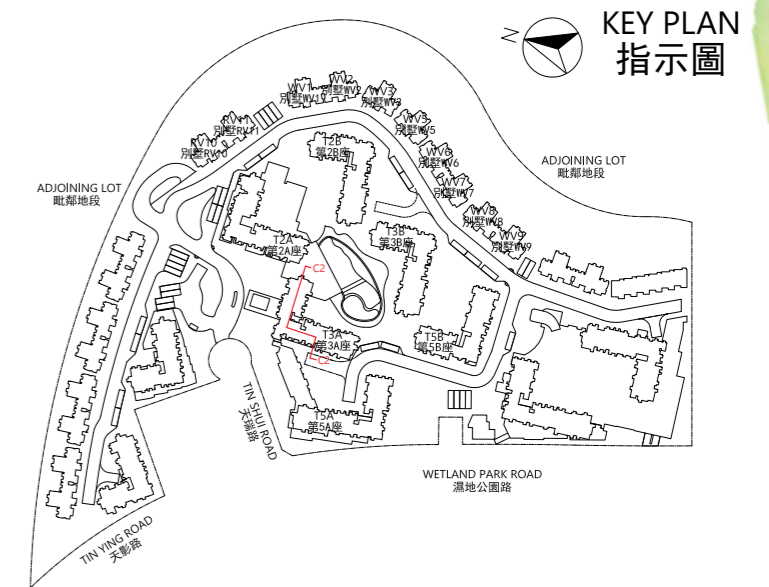
NOTES:

1. ▽ Denotes height (in metres) above the Hong Kong Principal Datum.
2. - - Dotted line denotes the level of the lowest residential floor of the building in the Phase.
3. The two parts of Emergency Vehicular Access adjacent to the building area both 7.30 metres above the Hong Kong Principal Datum.

備註：

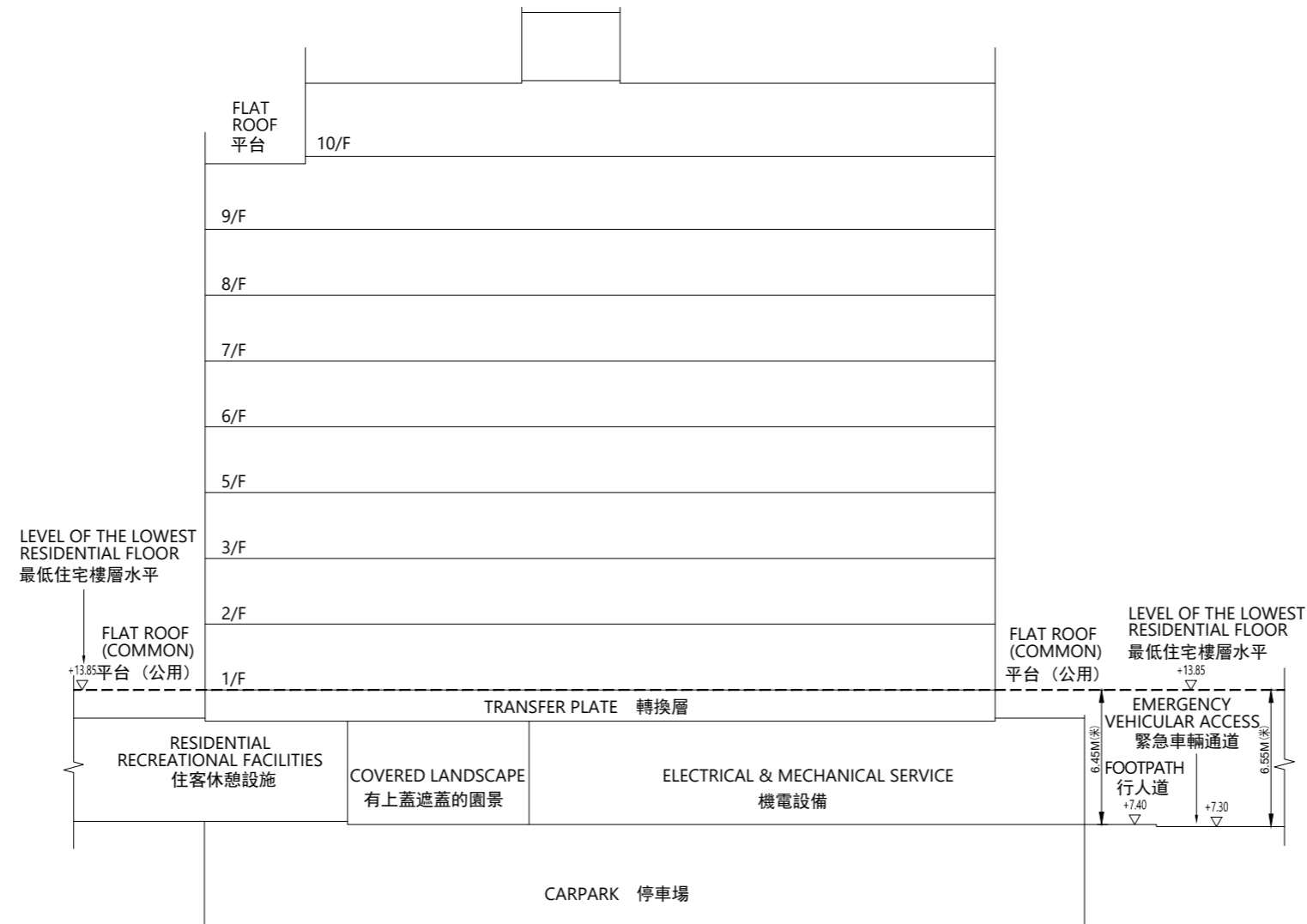
1. ▽ 代表香港主水平基準以上的高度(米)。
2. - - 虛線代表期數中建築物之最低住宅樓層水平。
3. 毗連建築物的兩段緊急車輛通道均為香港主水平基準以上7.30米。

CROSS-SECTION PLAN OF BUILDING IN THE PHASE 期數中的建築物的橫截面圖



T3A
第3A座

UPPER ROOF	上層天台
ROOF	天台
10/F RESIDENTIAL UNITS	10樓住宅單位
9/F RESIDENTIAL UNITS	9樓住宅單位
8/F RESIDENTIAL UNITS	8樓住宅單位
7/F RESIDENTIAL UNITS	7樓住宅單位
6/F RESIDENTIAL UNITS	6樓住宅單位
5/F RESIDENTIAL UNITS	5樓住宅單位
3/F RESIDENTIAL UNITS	3樓住宅單位
2/F RESIDENTIAL UNITS	2樓住宅單位
1/F RESIDENTIAL UNITS	1樓住宅單位
TRANSFER PLATE	轉換層
G/F	地下
BASEMENT	地庫



CROSS-SECTION PLAN C2
橫截面圖 C2

NOTES:

1. ▽ Denotes height (in metres) above the Hong Kong Principal Datum.
2. -- Dotted line denotes the level of the lowest residential floor of the building in the Phase.
3. The part of Emergency Vehicular Access adjacent to the building is 7.30 metres above the Hong Kong Principal Datum.
4. The part of footpath adjacent to the building is 7.40 metres above the Hong Kong Principal Datum.

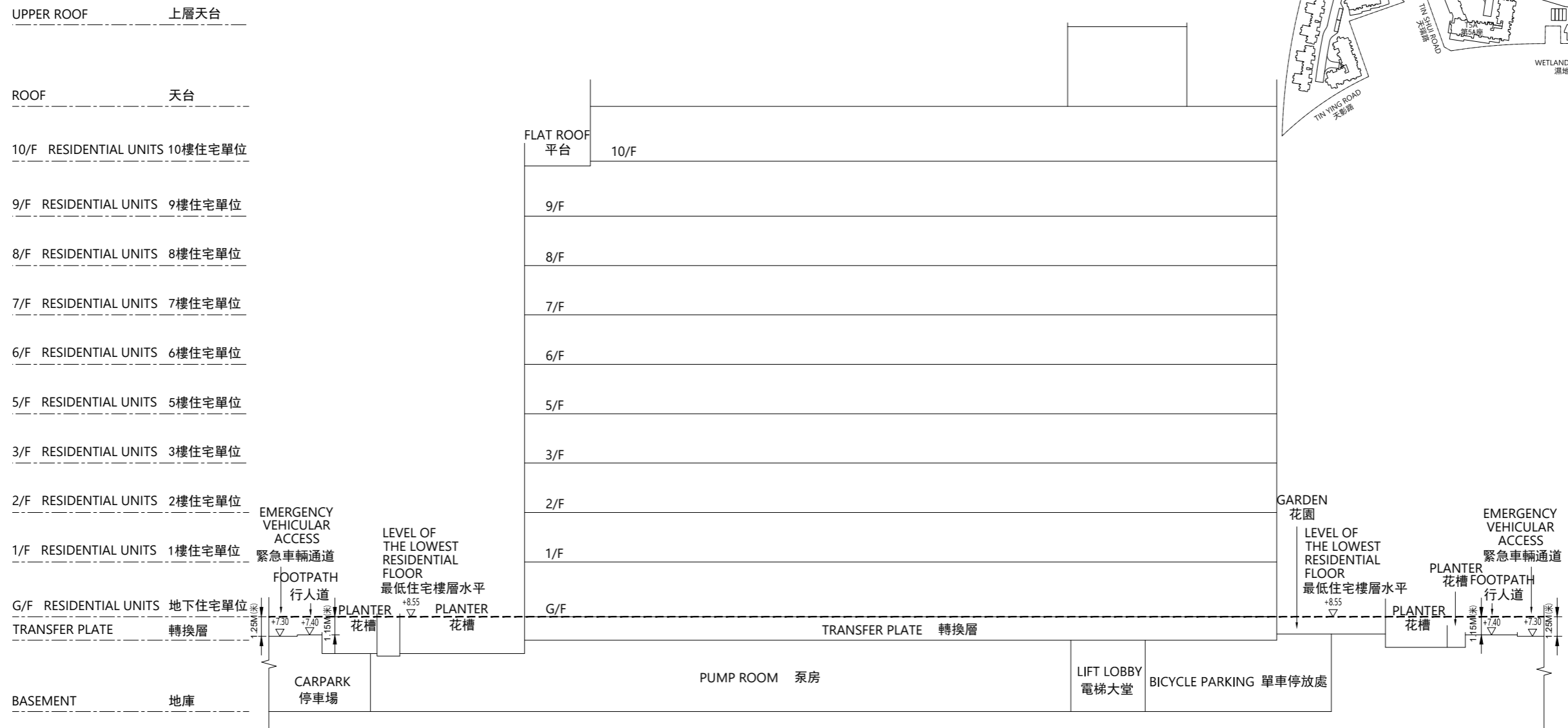
備註：

1. ▽ 代表香港主水平基準以上的高度(米)。
2. -- 虛線代表期數中建築物之最低住宅樓層水平。
3. 毗連建築物的一段緊急車輛通道為香港主水平基準以上7.30米。
4. 毗連建築物的一段行人道為香港主水平基準以上7.40米。

CROSS-SECTION PLAN OF BUILDING IN THE PHASE 期數中的建築物的橫截面圖

T3B
第3B座

KEY PLAN
指示圖



CROSS-SECTION PLAN D1
橫截面圖 D1

NOTES:

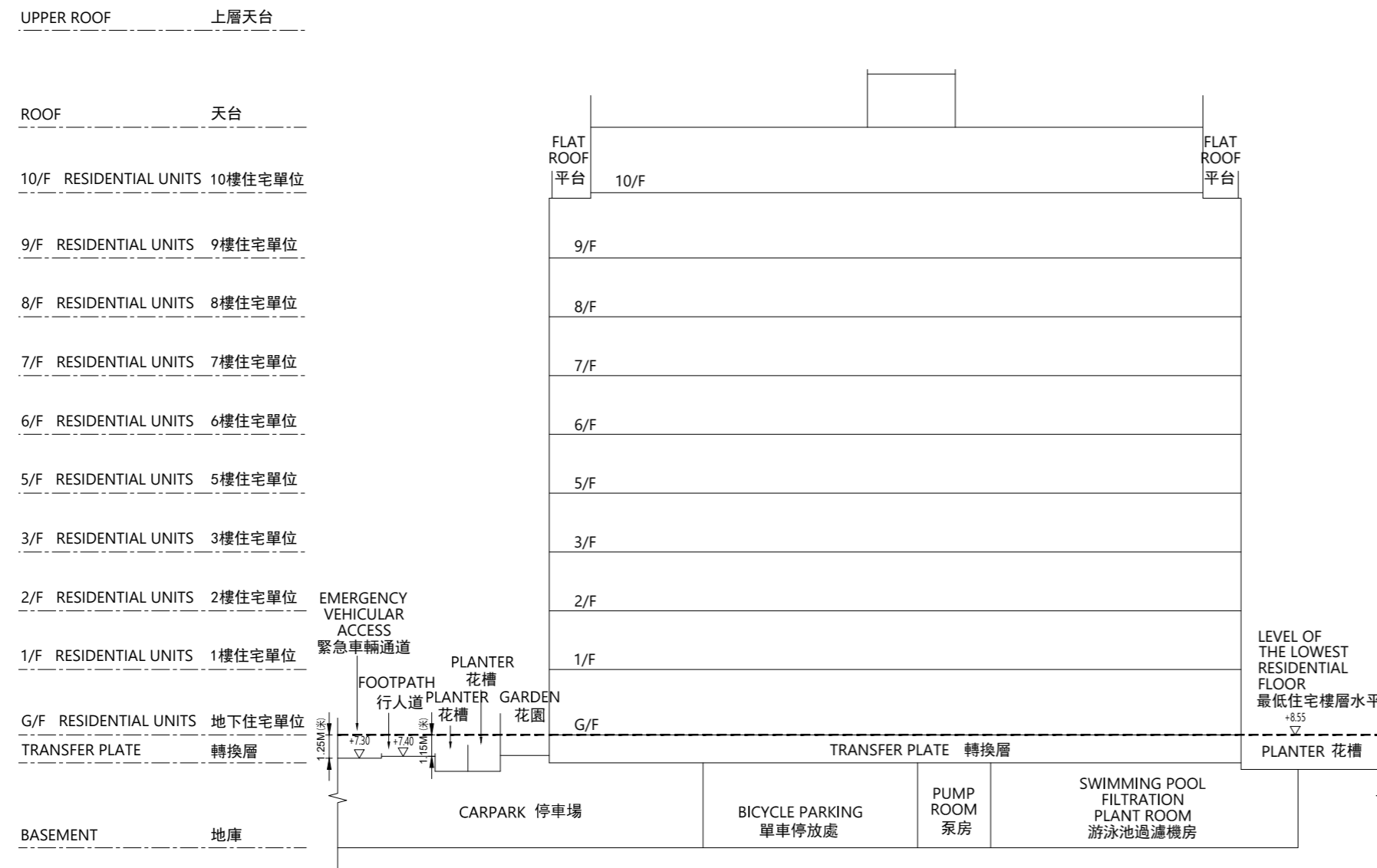
1. ∇ Denotes height (in metres) above the Hong Kong Principal Datum.
2. - - Dotted line denotes the level of the lowest residential floor of the building in the Phase.
3. The two parts of Emergency Vehicular Access adjacent to the building are both 7.30 metres above the Hong Kong Principal Datum.
4. The two parts of footpath adjacent to the building are both 7.40 metres above the Hong Kong Principal Datum.

備註:

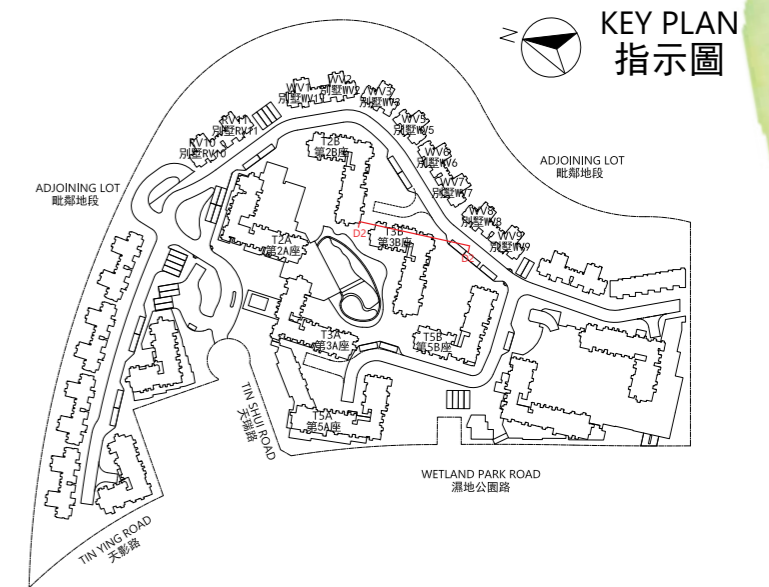
1. ∇ 代表香港主水平基準以上的高度(米)。
2. - - 虛線代表期數中建築物之最低住宅樓層水平。
3. 毗連建築物的兩段緊急車輛通道均為香港主水平基準以上7.30米。
4. 毗連建築物的兩段行人道均為香港主水平基準以上7.40米。

CROSS-SECTION PLAN OF BUILDING IN THE PHASE 期數中的建築物的橫截面圖

T3B
第3B座



CROSS-SECTION PLAN D2
橫截面圖 D2



NOTES:

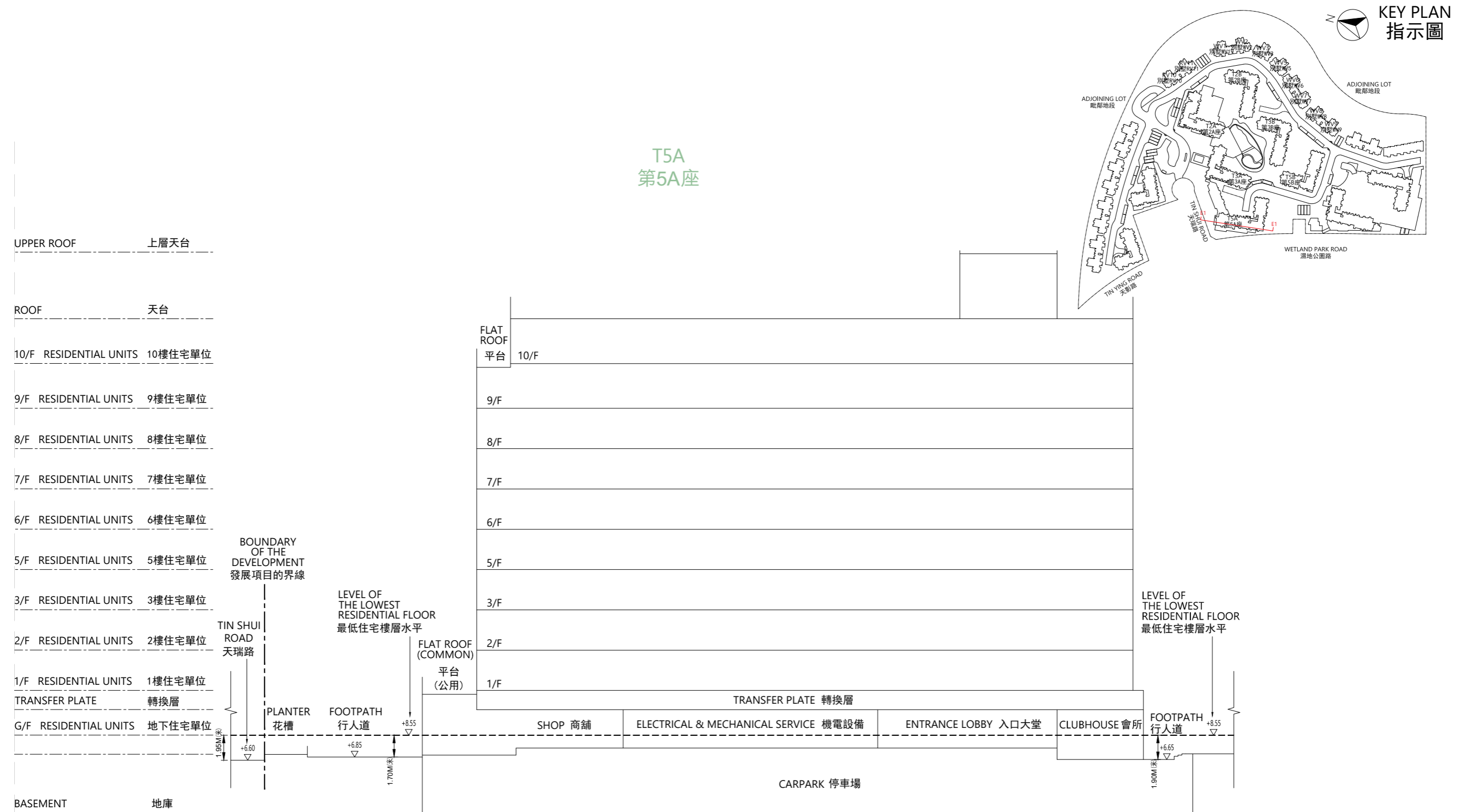
1. ▽ Denotes height (in metres) above the Hong Kong Principal Datum.
2. - - Dotted line denotes the level of the lowest residential floor of the building in the Phase.
3. The part of Emergency Vehicular Access adjacent to the building is 7.30 metres above the Hong Kong Principal Datum.
4. The part of footpath adjacent to the building is 7.40 metres above the Hong Kong Principal Datum.

備註：

1. ▽ 代表香港主水平基準以上的高度(米)。
2. - - 虛線代表期數中建築物之最低住宅樓層水平。
3. 毗連建築物的一段緊急車輛通道為香港主水平基準以上7.30米。
4. 毗連建築物的一段行人道為香港主水平基準以上7.40米。

CROSS-SECTION PLAN OF BUILDING IN THE PHASE 期數中的建築物的橫截面圖

T5A
第5A座



CROSS-SECTION PLAN E1
橫截面圖 E1

NOTES:

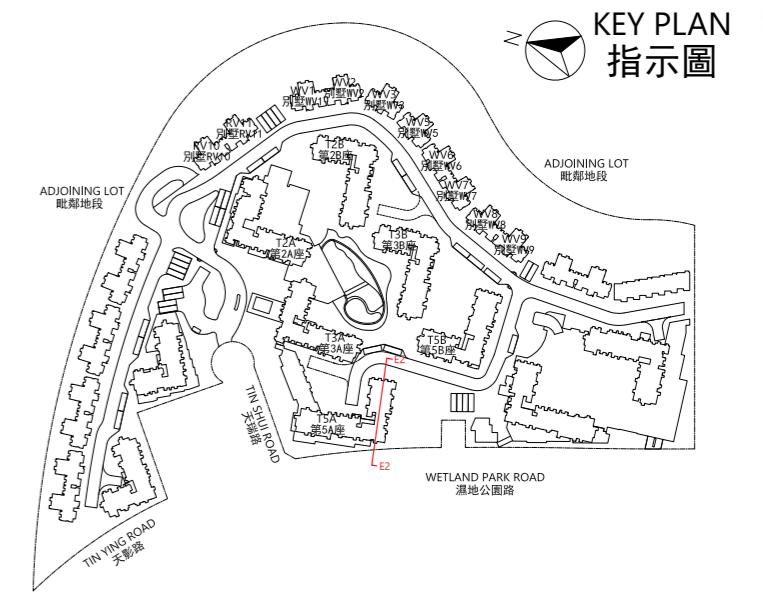
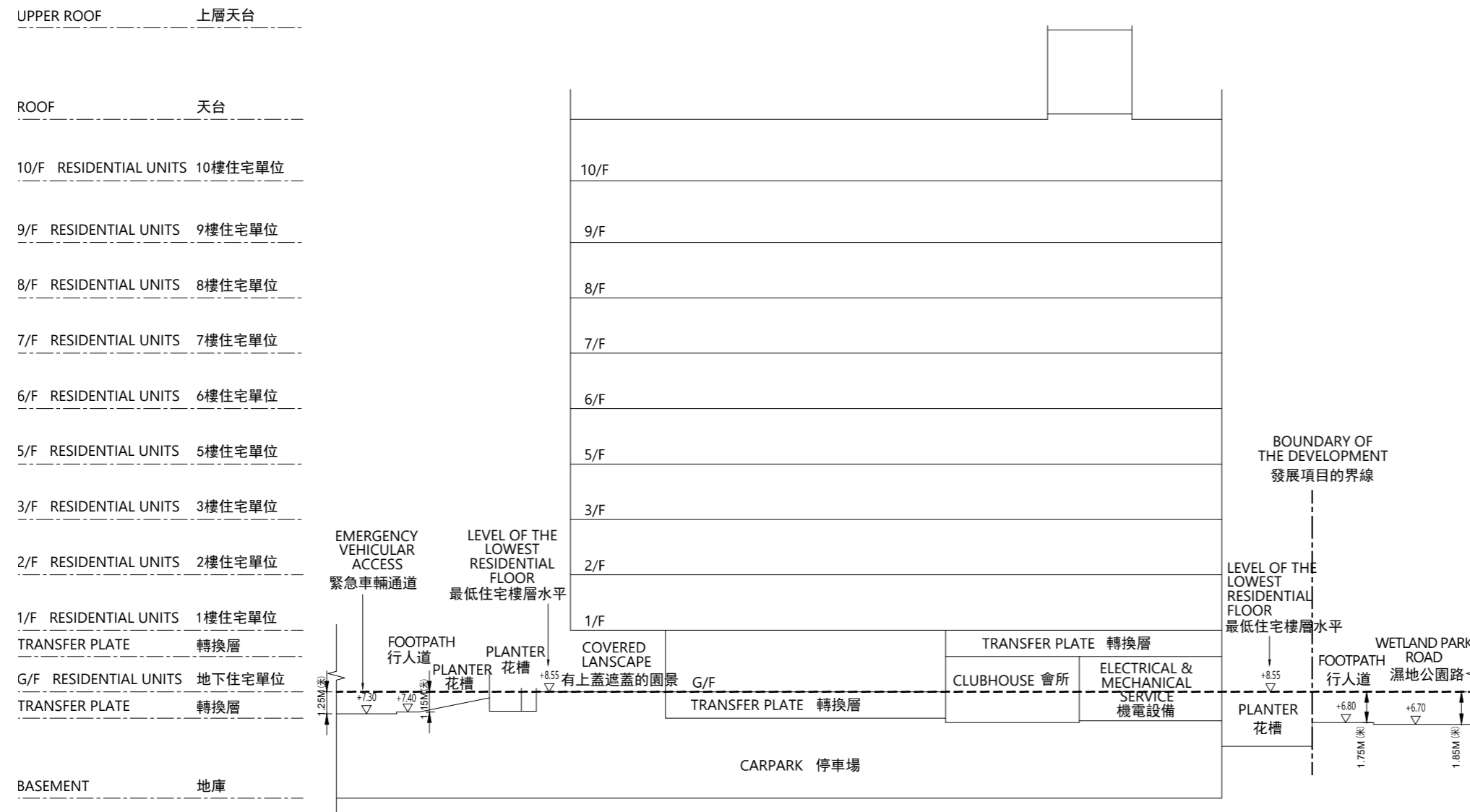
1. ▽ Denotes height (in metres) above the Hong Kong Principal Datum.
2. --- Dotted line denotes the level of the lowest residential floor of the building in the Phase.
3. The part of Tin Shui Road adjacent to the building is 6.60 metres above the Hong Kong Principal Datum.
4. The two parts of footpath adjacent to the building are respectively 6.65 and 6.85 metres above the Hong Kong Principal Datum.

備註:

1. ▽ 代表香港主水平基準以上的高度(米)。
2. --- 虛線代表期數中建築物之最低住宅樓層水平。
3. 毗連建築物的一段天瑞路為香港主水平基準以上6.60米。
4. 毗連建築物的兩段行人道分別為香港主水平基準以上6.65及6.85米。

CROSS-SECTION PLAN OF BUILDING IN THE PHASE 期數中的建築物的橫截面圖

T5A
第5A座



CROSS-SECTION PLAN E2
橫截面圖 E2

NOTES:

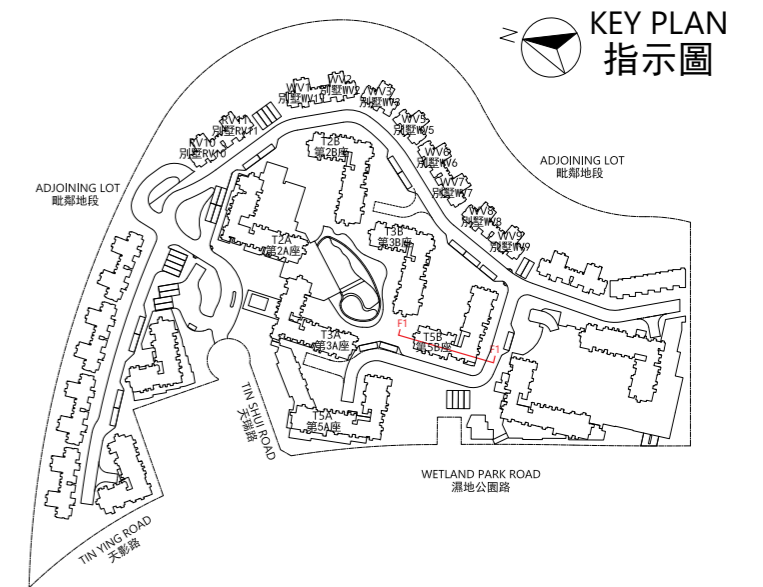
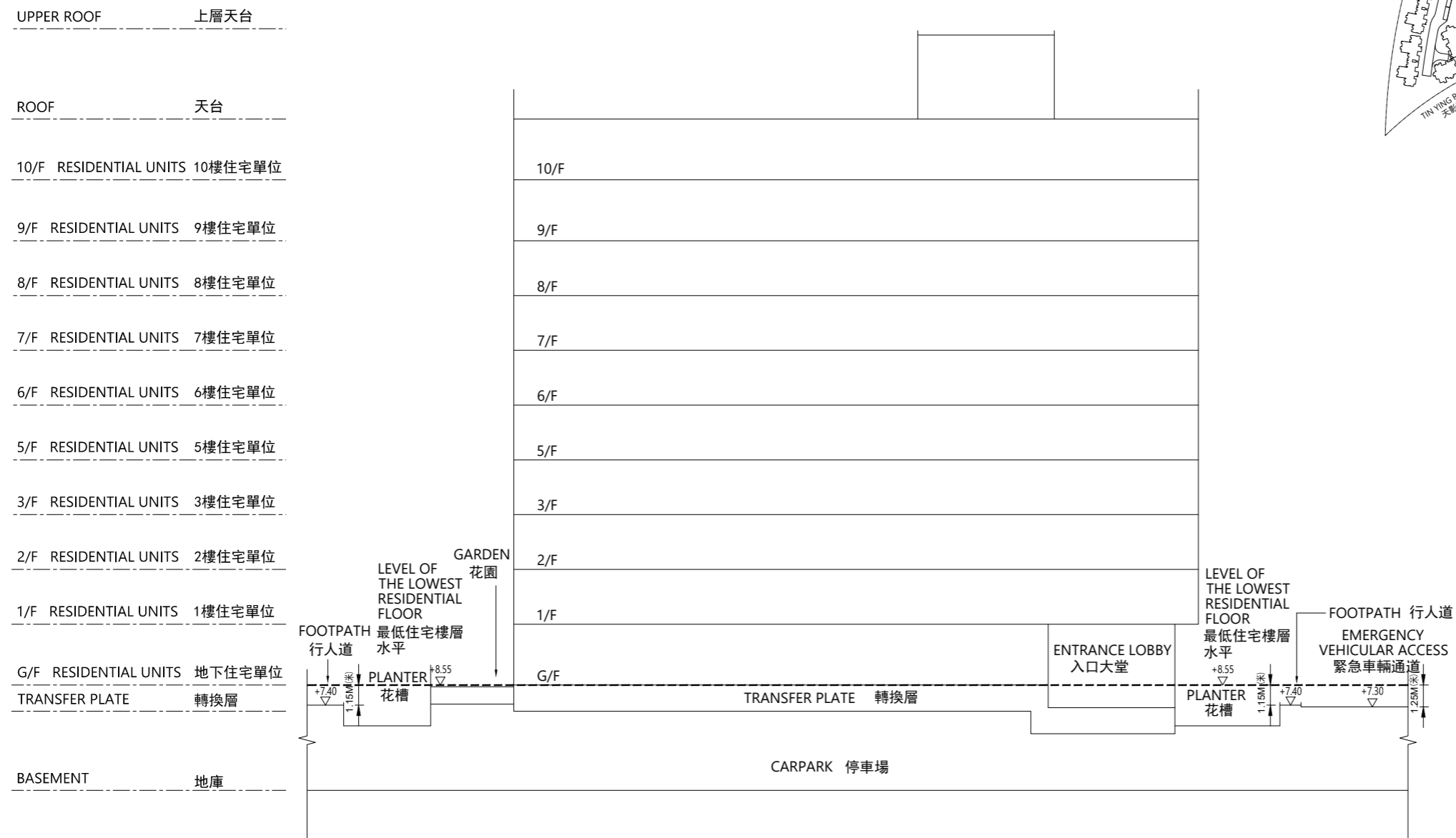
1. ▽ Denotes height (in metres) above the Hong Kong Principal Datum.
2. - - Dotted line denotes the level of the lowest residential floor of the building in the Phase.
3. The part of Wetland Park Road adjacent to the building is 6.70 metres above the Hong Kong Principal Datum.
4. The part of Emergency Vehicular Access adjacent to the building is 7.30 metres above the Hong Kong Principal Datum.
5. The two parts of footpath adjacent to the building are respectively 6.80 and 7.40 metres above the Hong Kong Principal Datum.

備註:

1. ▽ 代表香港主水平基準以上的高度(米)。
2. - - 虛線代表期數中建築物之最低住宅樓層水平。
3. 毗連建築物的一段濕地公園路為香港主水平基準以上6.70米。
4. 毗連建築物的一段緊急車輛通道為香港主水平基準以上7.30米。
5. 毗連建築物的兩段行人道分別為香港主水平基準以上6.80及7.40米。

CROSS-SECTION PLAN OF BUILDING IN THE PHASE 期數中的建築物的橫截面圖

T5B
第5B座



CROSS-SECTION PLAN F1
橫截面圖 F1

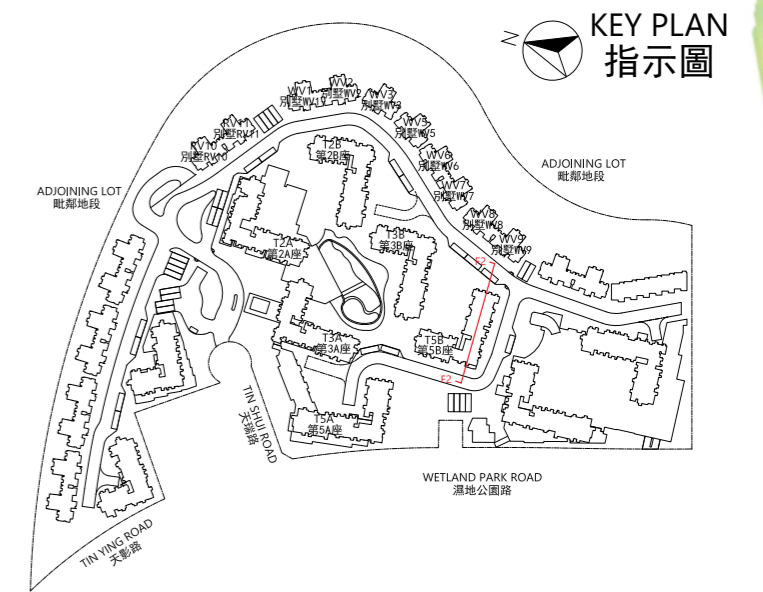
NOTES:

1. ▽ Denotes height (in metres) above the Hong Kong Principal Datum.
2. - - Dotted line denotes the level of the lowest residential floor of the building in the Phase.
3. The part of Emergency Vehicular Access adjacent to the building is 7.30 metres above the Hong Kong Principal Datum.
4. The two parts of Footpath adjacent to the building are both 7.40 metres above the Hong Kong Principal Datum.

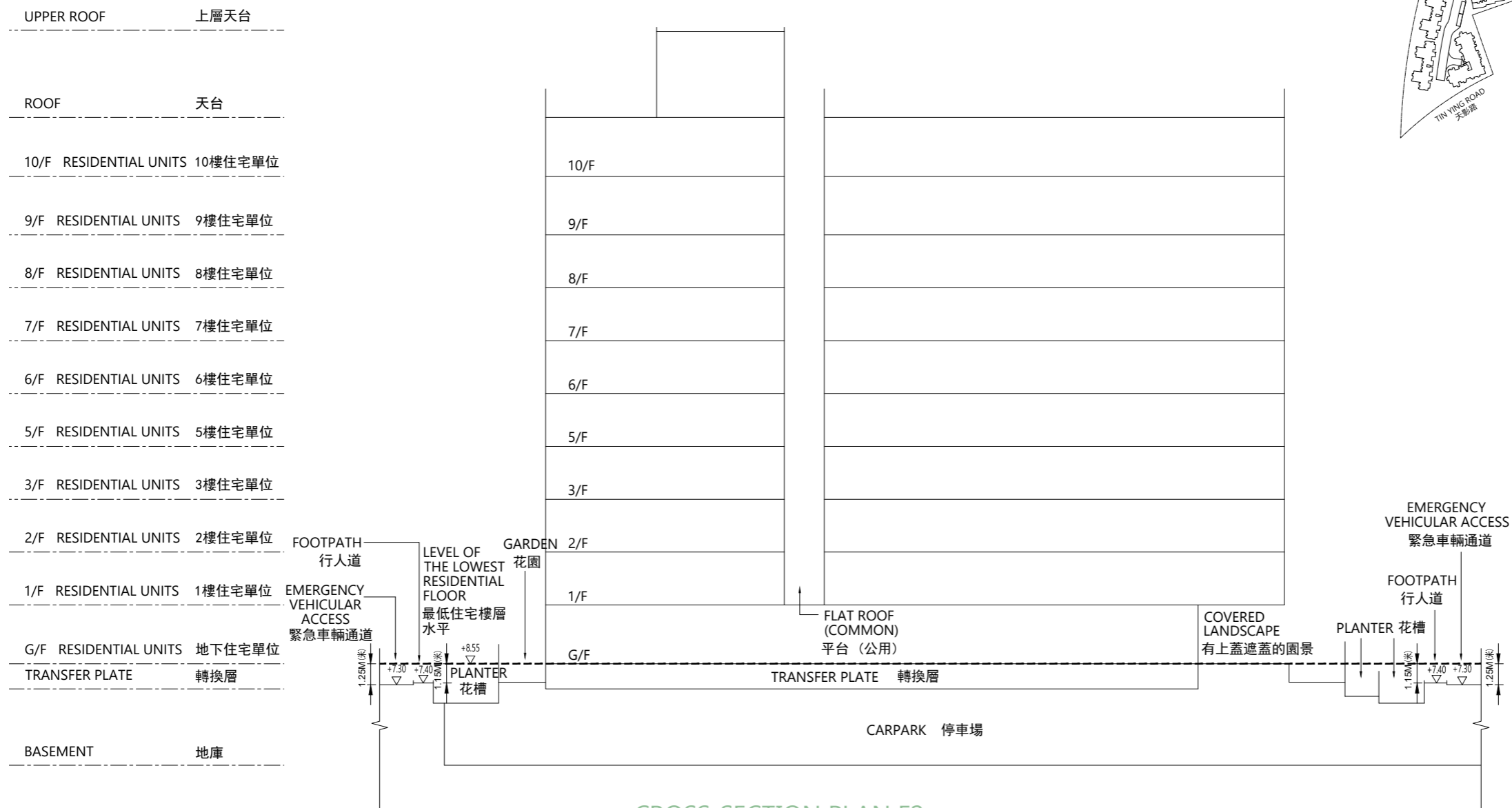
備註：

1. ▽ 代表香港主水平基準以上的高度(米)。
2. - - 虛線代表期數中建築物之最低住宅樓層水平。
3. 毗連建築物的一段緊急車輛通道為香港主水平基準以上7.30米。
4. 毗連建築物的兩段行人道均為香港主水平基準以上7.40米。

CROSS-SECTION PLAN OF BUILDING IN THE PHASE 期數中的建築物的橫截面圖



T5B
第5B座



CROSS-SECTION PLAN F2
橫截面圖 F2

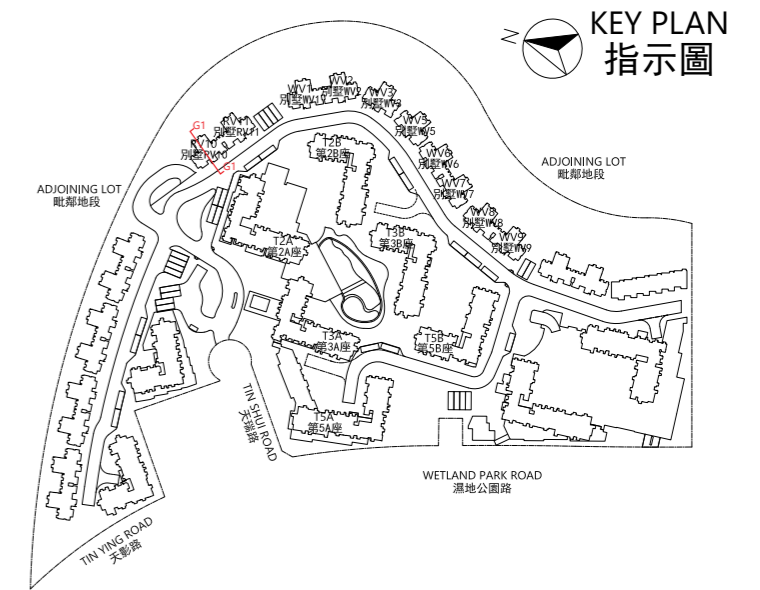
NOTES:

1. ∇ Denotes height (in metres) above the Hong Kong Principal Datum.
2. - - Dotted line denotes the level of the lowest residential floor of the building in the Phase.
3. The two parts of Emergency Vehicular Access adjacent to the building are both 7.30 metres above the Hong Kong Principal Datum.
4. The two parts of Footpath adjacent to the building are both 7.40 metres above the Hong Kong Principal Datum.

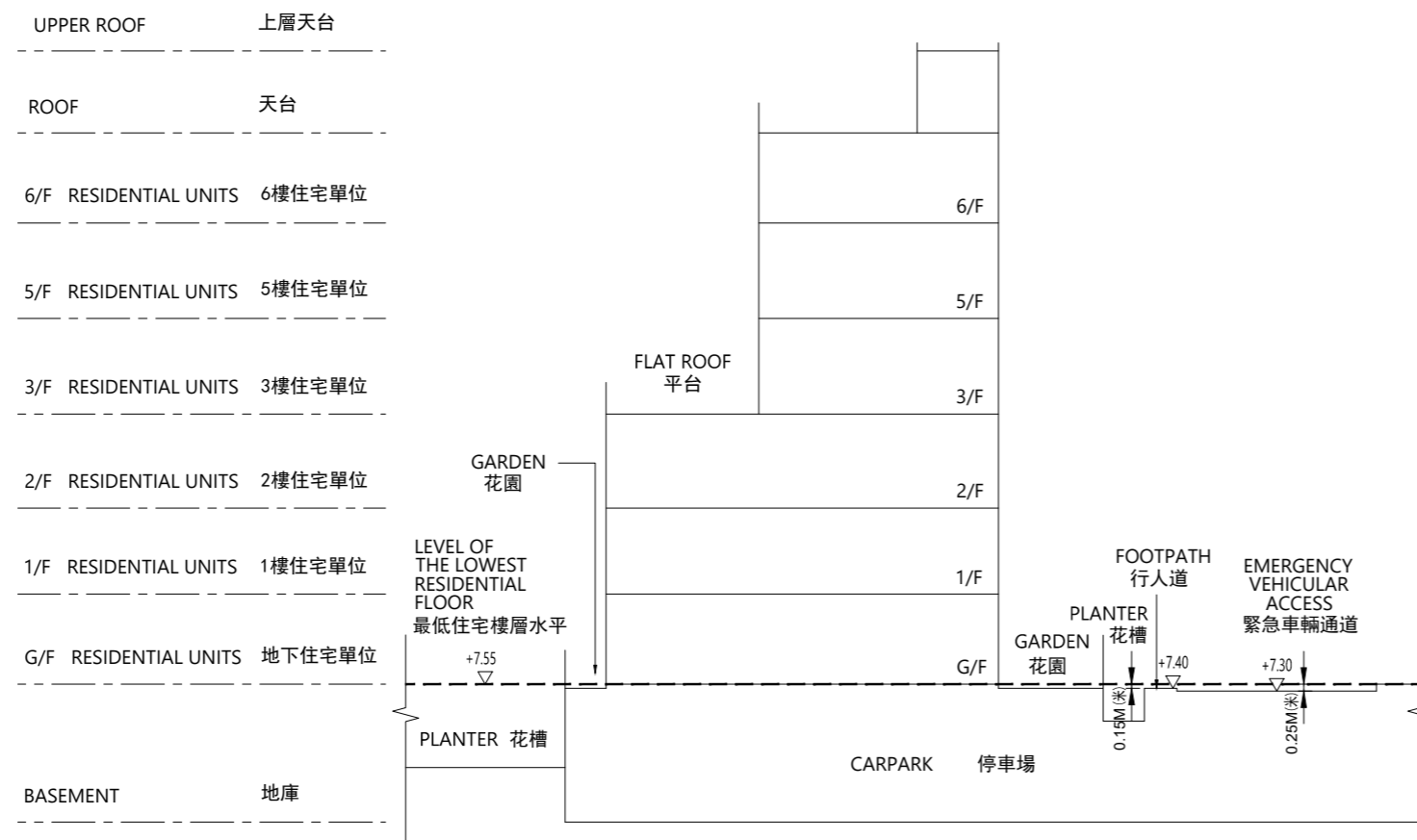
備註:

1. ∇ 代表香港主水平基準以上的高度(米)。
2. - - 虛線代表期數中建築物之最低住宅樓層水平。
3. 毗連建築物的兩段緊急車輛通道均為香港主水平基準以上7.30米。
4. 毗連建築物的兩段行人道均為香港主水平基準以上7.40米。

CROSS-SECTION PLAN OF BUILDING IN THE PHASE 期數中的建築物的橫截面圖



RV10
別墅RV10



CROSS-SECTION PLAN G1
橫截面圖 G1

NOTES:

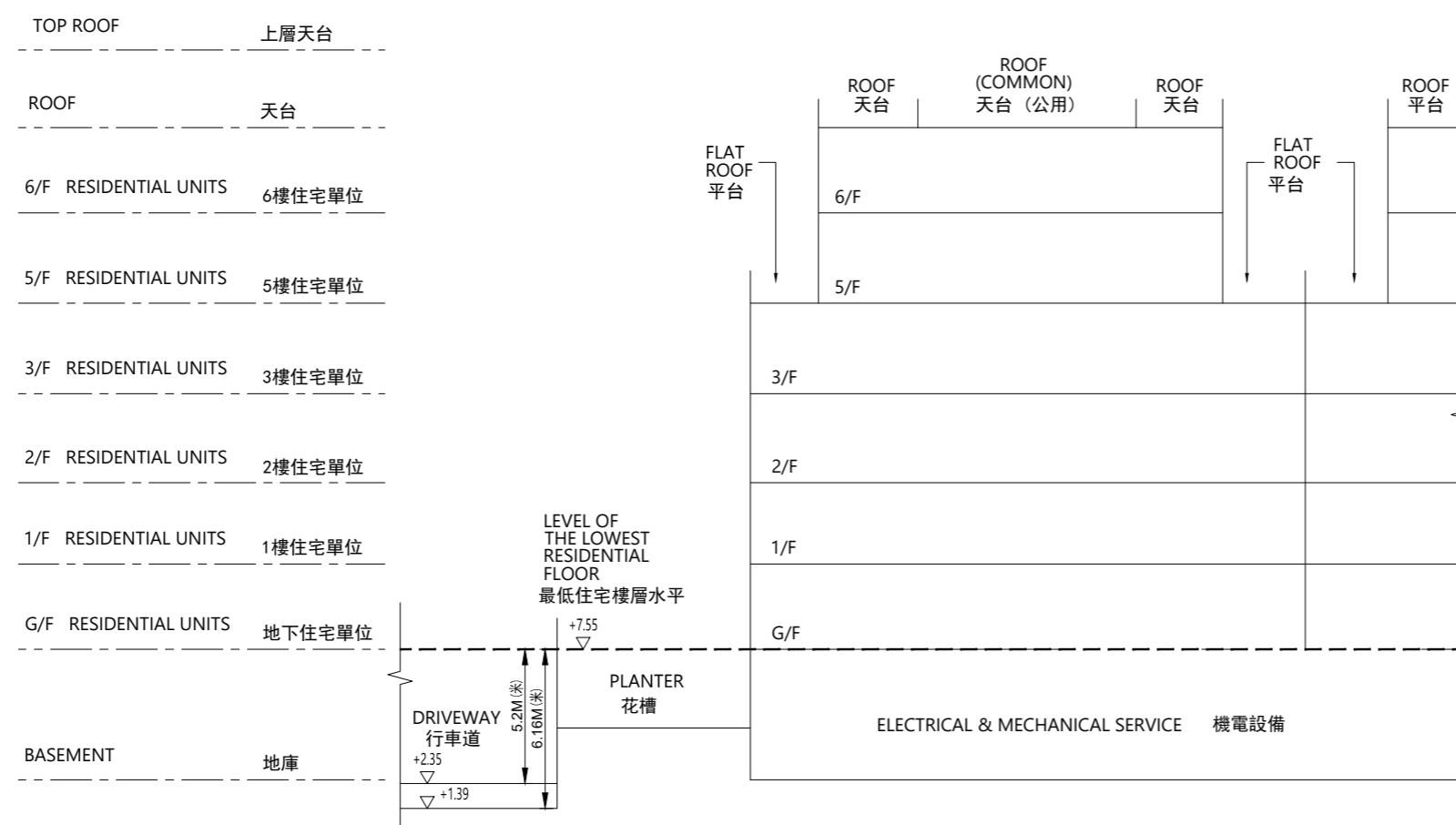
1. ∇ Denotes height (in metres) above the Hong Kong Principal Datum.
2. - - Dotted line denotes the level of the lowest residential floor of the building in the Phase.
3. The part of Emergency Vehicular Access adjacent to the building is 7.30 metres above the Hong Kong Principal Datum.
4. The part of footpath adjacent to the building is 7.40 metres above the Hong Kong Principal Datum.

備註:

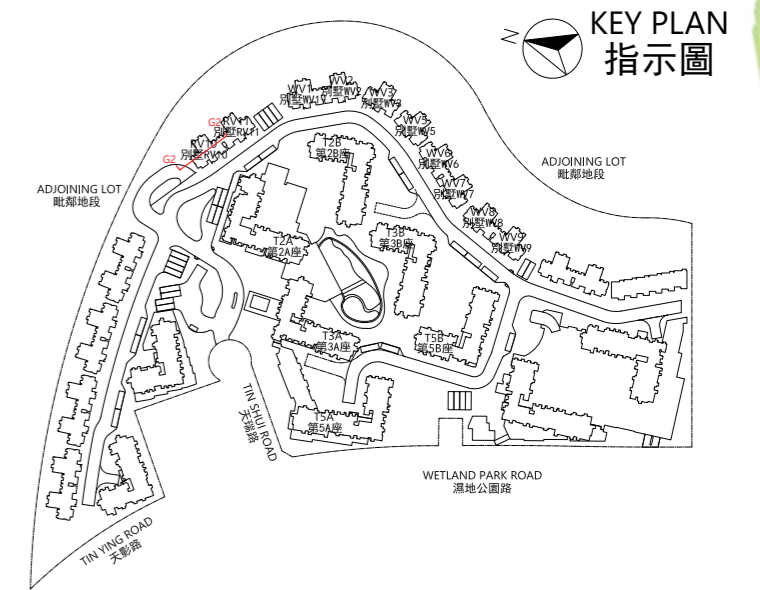
1. ∇ 代表香港主水平基準以上的高度(米)。
2. - - 虛線代表期數中建築物之最低住宅樓層水平。
3. 毗連建築物的一段緊急車輛通道為香港主水平基準以上7.30米。
4. 毗連建築物的一段行人道為香港主水平基準以上7.40米。

CROSS-SECTION PLAN OF BUILDING IN THE PHASE 期數中的建築物的橫截面圖

RV10 別墅RV10



CROSS-SECTION PLAN G2
橫截面圖 G2



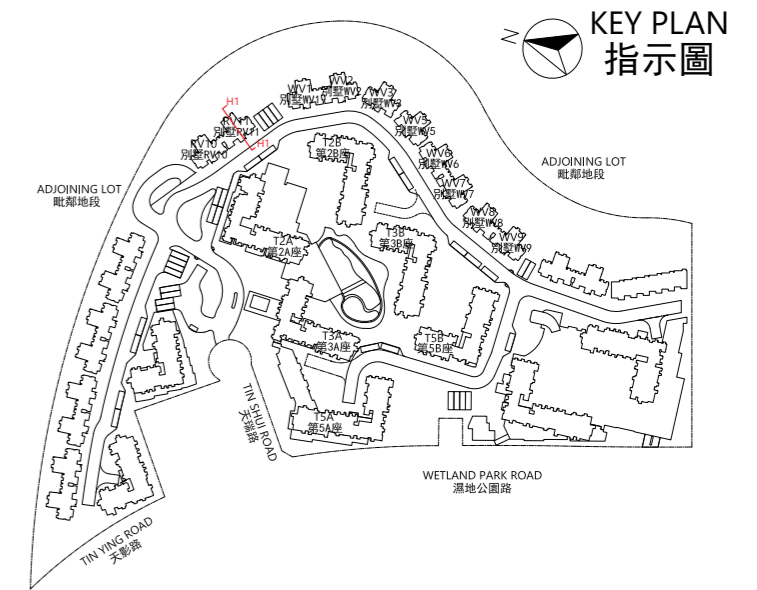
NOTES:

1. ∇ Denotes height (in metres) above the Hong Kong Principal Datum.
2. -- Dotted line denotes the level of the lowest residential floor of the building in the Phase.
3. The part of driveway adjacent to the building is 1.39 to 2.35 metres above the Hong Kong Principal Datum.

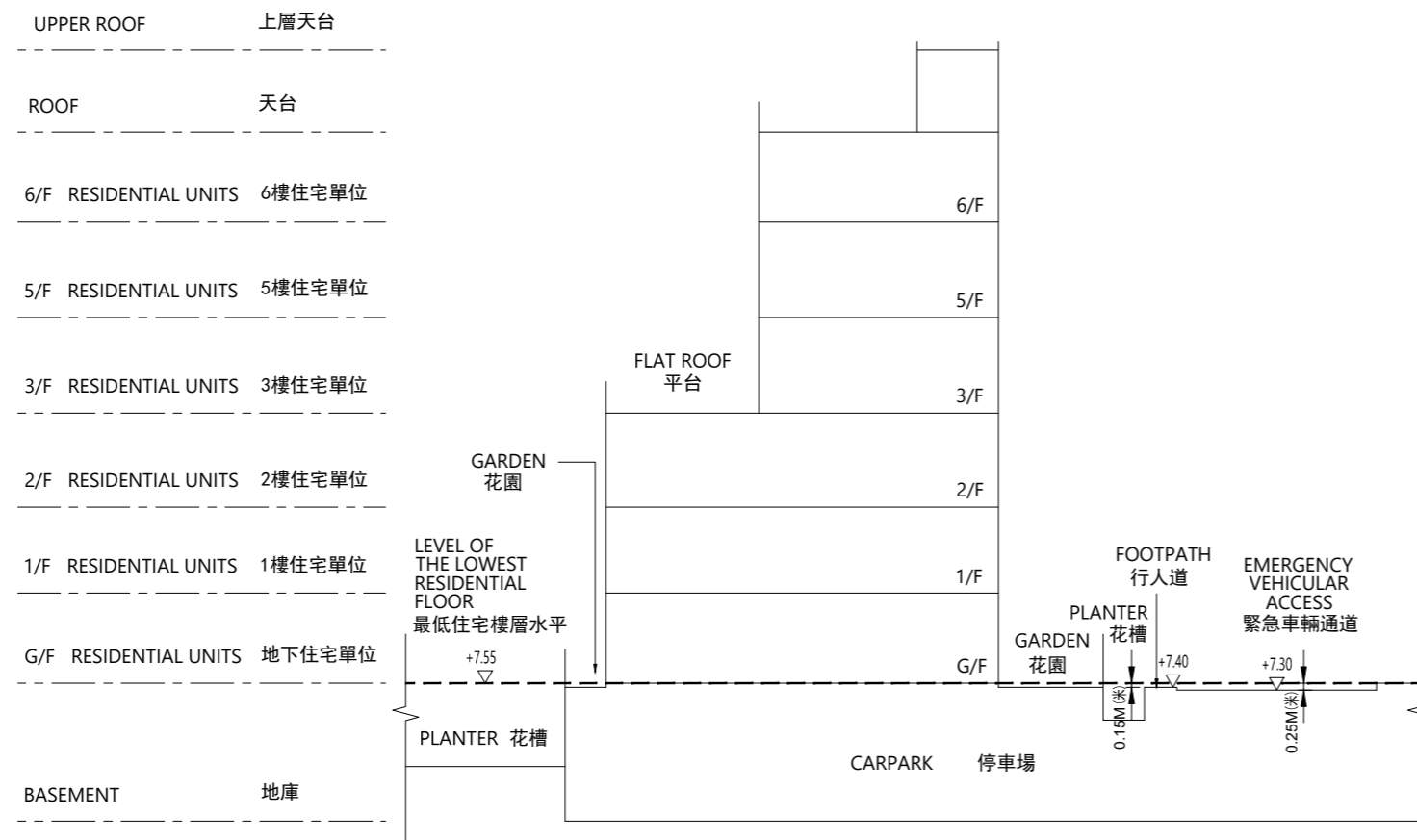
備註:

1. ∇ 代表香港主水平基準以上的高度(米)。
2. -- 虛線代表期數中建築物之最低住宅樓層水平。
3. 毗連建築物的一段行車道為香港主水平基準以上1.39至2.35米。

CROSS-SECTION PLAN OF BUILDING IN THE PHASE 期數中的建築物的橫截面圖



RV11
別墅RV11



CROSS-SECTION PLAN H1
橫截面圖 H1

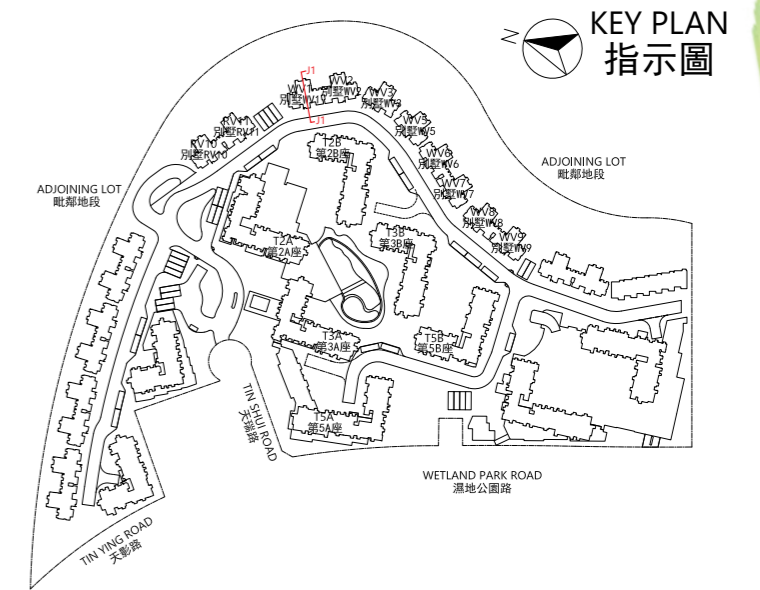
NOTES:

1. ∇ Denotes height (in metres) above the Hong Kong Principal Datum.
2. --Dotted line denotes the level of the lowest residential floor of the building in the Phase.
3. The part of Emergency Vehicular Access adjacent to the building is 7.30 metres above the Hong Kong Principal Datum.
4. The part of footpath adjacent to the building is 7.40 metres above the Hong Kong Principal Datum.

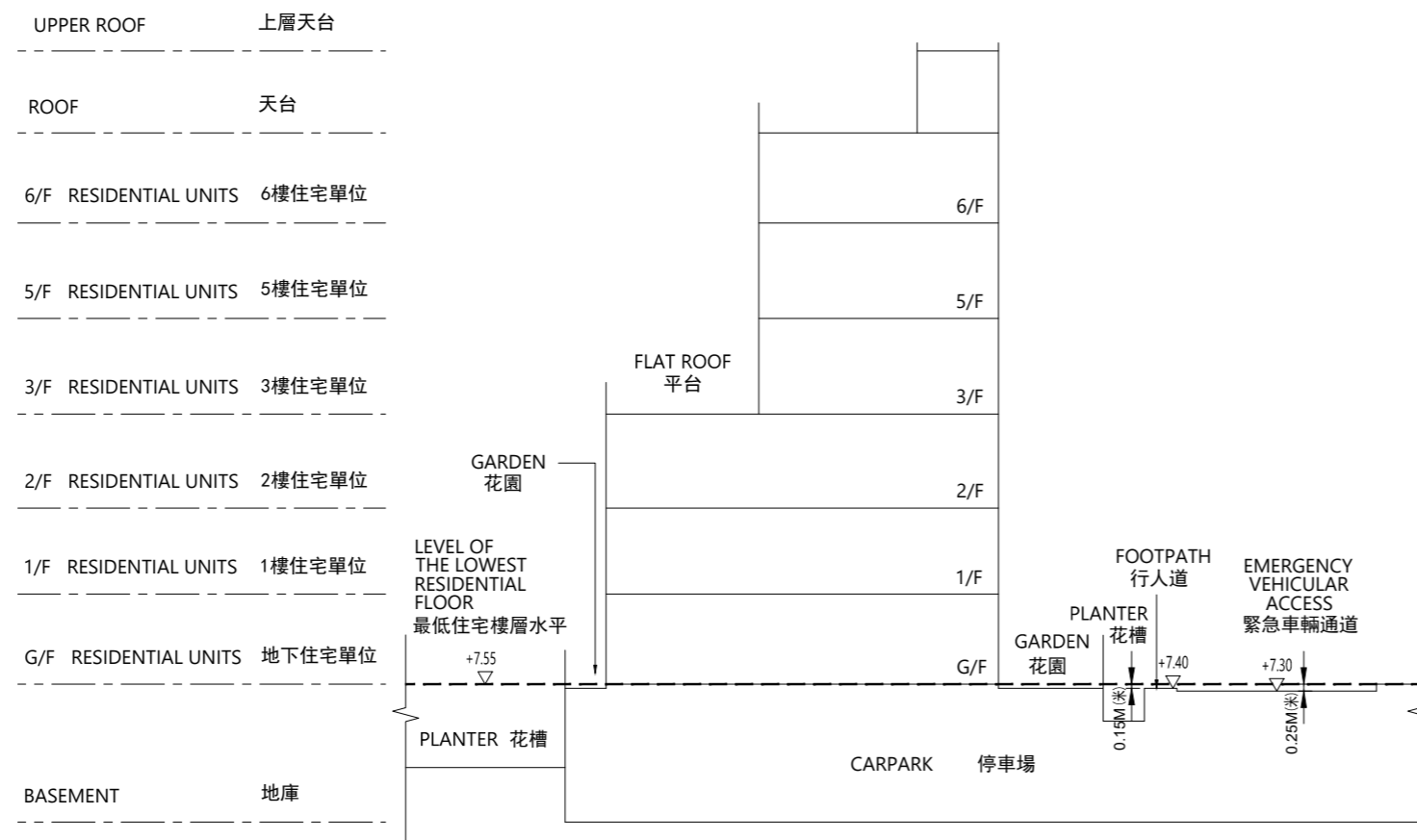
備註：

1. ∇ 代表香港主水平基準以上的高度(米)。
2. -- 虛線代表期數中建築物之最低住宅樓層水平。
3. 毗連建築物的一段緊急車輛通道為香港主水平基準以上7.30米。
4. 毗連建築物的一段行人道為香港主水平基準以上7.40米。

CROSS-SECTION PLAN OF BUILDING IN THE PHASE 期數中的建築物的橫截面圖



WV1
別墅WV1



CROSS-SECTION PLAN J1
橫截面圖 J1

NOTES:

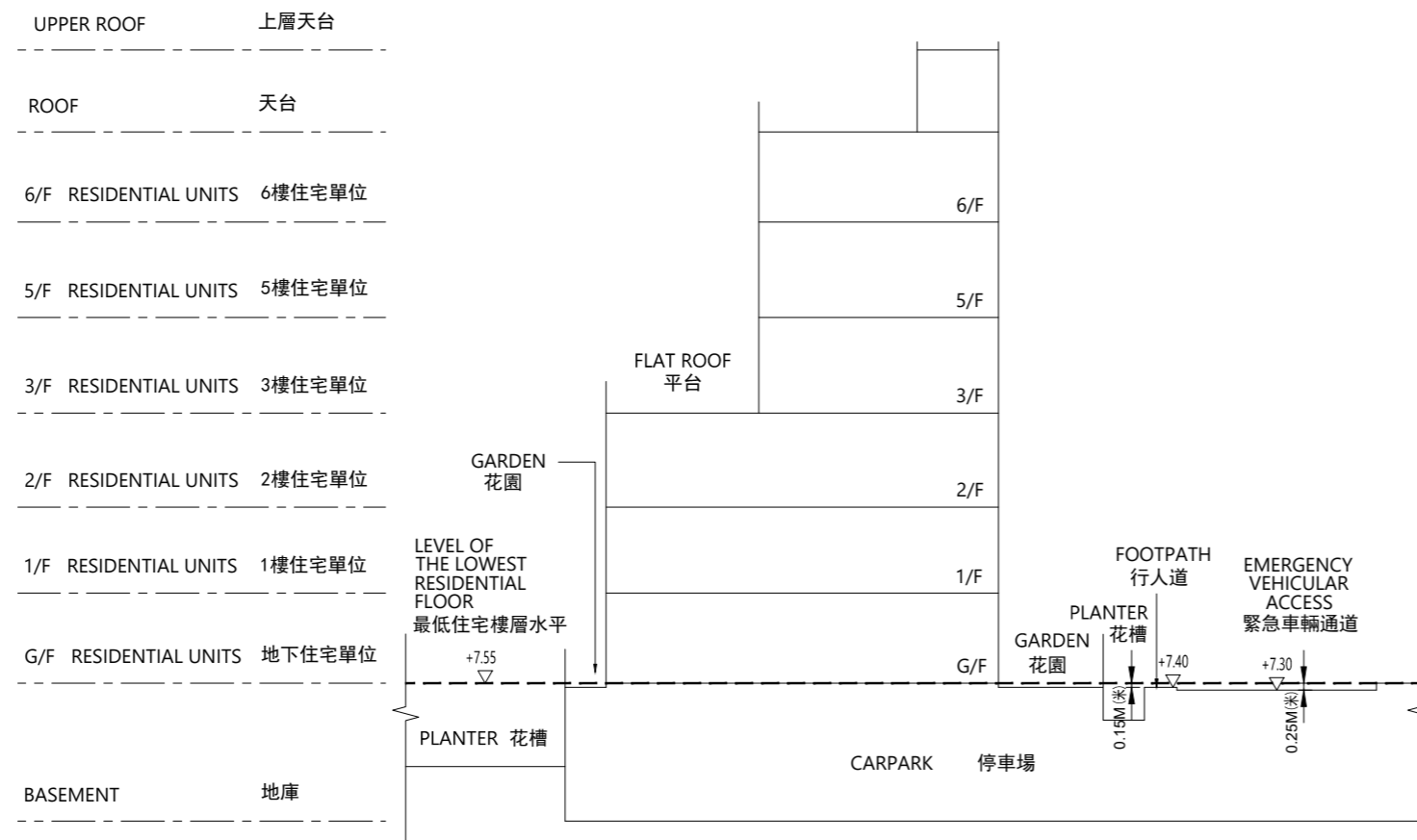
1. ∇ Denotes height (in metres) above the Hong Kong Principal Datum.
2. -- Dotted line denotes the level of the lowest residential floor of the building in the Phase.
3. The part of Emergency Vehicular Access adjacent to the building is 7.30 metres above the Hong Kong Principal Datum.
4. The part of footpath adjacent to the building is 7.40 metres above the Hong Kong Principal Datum.

備註:

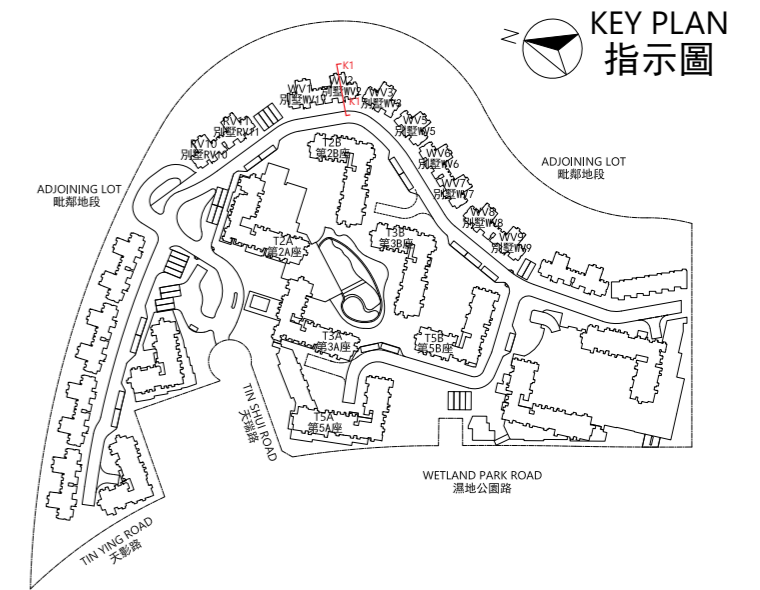
1. ∇ 代表香港主水平基準以上的高度(米)。
2. -- 虛線代表期數中建築物之最低住宅樓層水平。
3. 毗連建築物的一段緊急車輛通道為香港主水平基準以上7.30米。
4. 毗連建築物的一段行人道為香港主水平基準以上7.40米。

CROSS-SECTION PLAN OF BUILDING IN THE PHASE 期數中的建築物的橫截面圖

WV2
別墅WV2



CROSS-SECTION PLAN K1
橫截面圖 K1



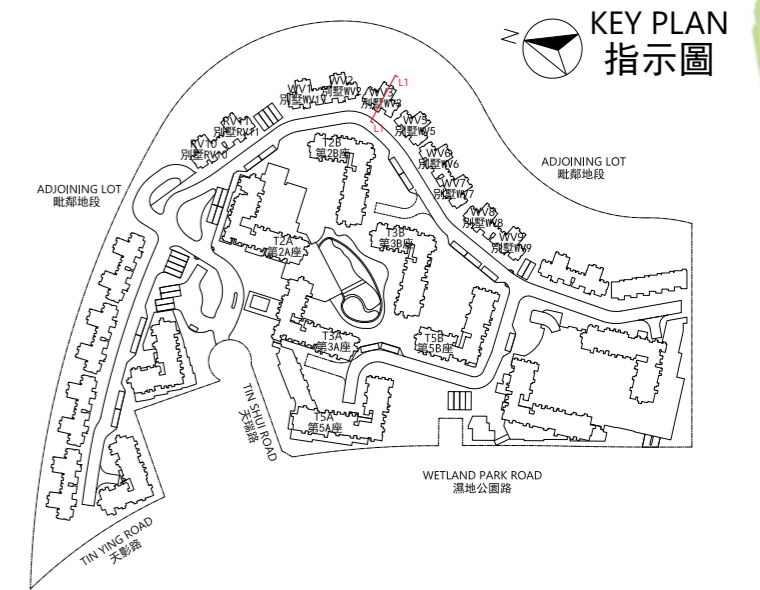
NOTES:

1. ∇ Denotes height (in metres) above the Hong Kong Principal Datum.
2. - - Dotted line denotes the level of the lowest residential floor of the building in the Phase.
3. The part of Emergency Vehicular Access adjacent to the building is 7.30 metres above the Hong Kong Principal Datum.
4. The part of footpath adjacent to the building is 7.40 metres above the Hong Kong Principal Datum.

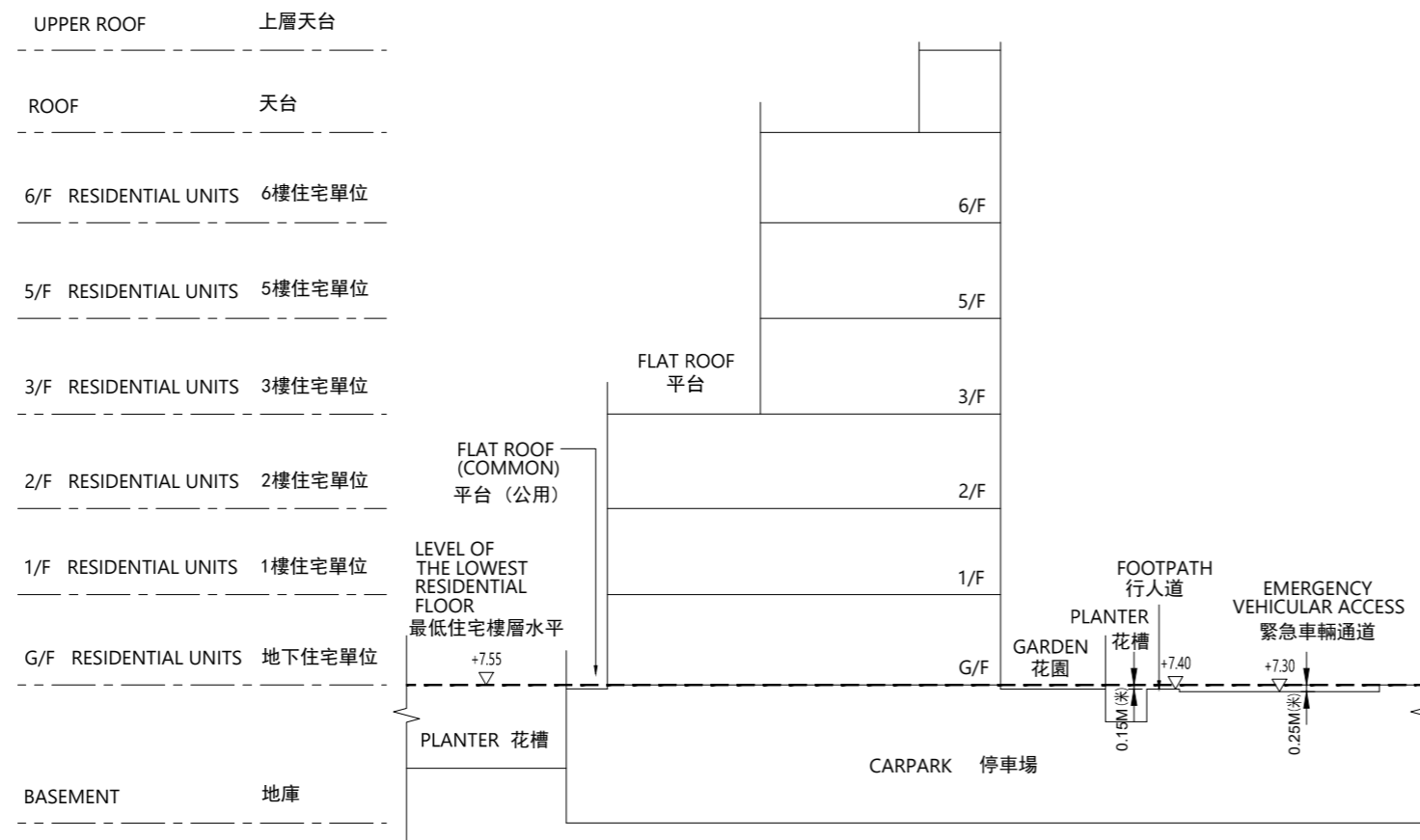
備註：

1. ∇ 代表香港主水平基準以上的高度(米)。
2. - - 虛線代表期數中建築物之最低住宅樓層水平。
3. 毗連建築物的一段緊急車輛通道為香港主水平基準以上7.30米。
4. 毗連建築物的一段行人道為香港主水平基準以上7.40米。

CROSS-SECTION PLAN OF BUILDING IN THE PHASE 期數中的建築物的橫截面圖



WV3 別墅WV3



CROSS-SECTION PLAN L1
橫截面圖 L1

NOTES:

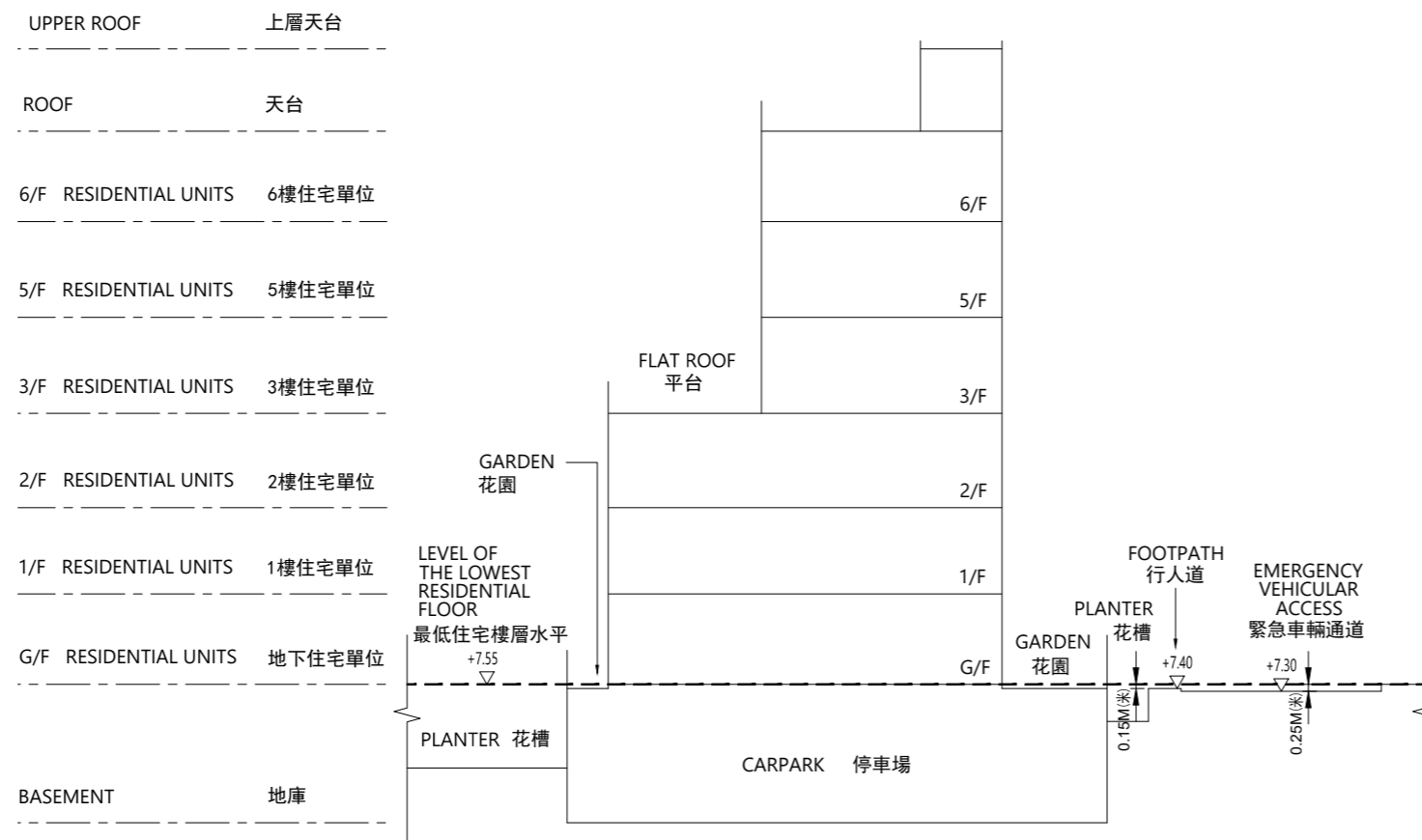
1. ∇ Denotes height (in metres) above the Hong Kong Principal Datum.
2. - - Dotted line denotes the level of the lowest residential floor of the building in the Phase.
3. The part of Emergency Vehicular Access adjacent to the building is 7.30 metres above the Hong Kong Principal Datum.
4. The part of footpath adjacent to the building is 7.40 metres above the Hong Kong Principal Datum.

備註:

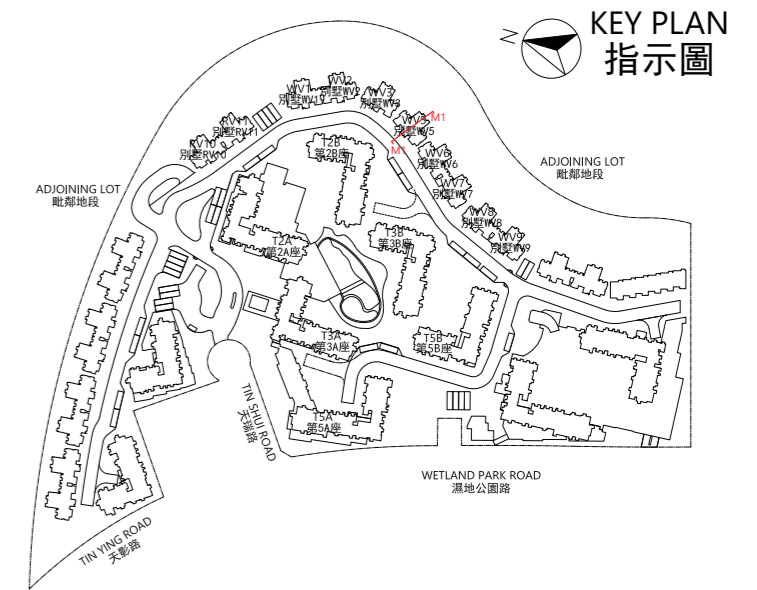
1. ∇ 代表香港主水平基準以上的高度(米)。
2. - - 虛線代表期數中建築物之最低住宅樓層水平。
3. 毗連建築物的一段緊急車輛通道為香港主水平基準以上7.30米。
4. 毗連建築物的一段行人道為香港主水平基準以上7.40米。

CROSS-SECTION PLAN OF BUILDING IN THE PHASE 期數中的建築物的橫截面圖

WV5 別墅WV5



CROSS-SECTION PLAN M1
橫截面圖 M1



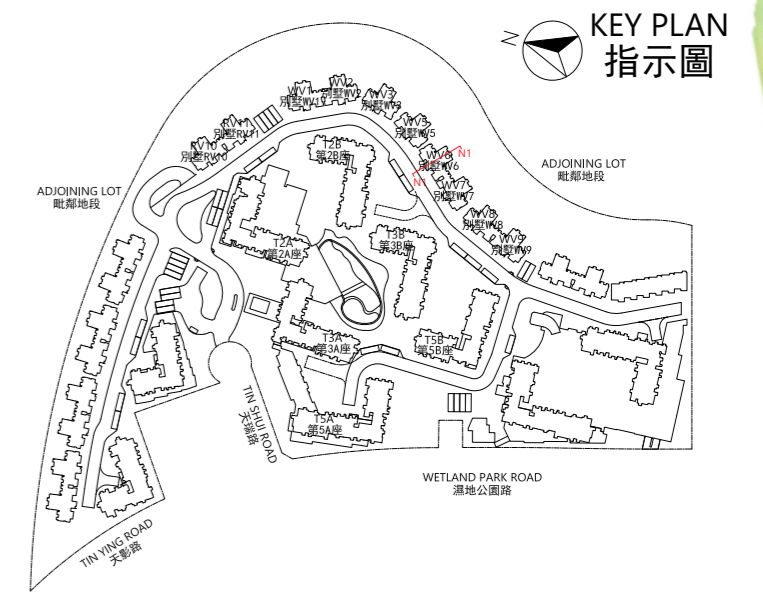
NOTES:

1. ∇ Denotes height (in metres) above the Hong Kong Principal Datum.
2. - - Dotted line denotes the level of the lowest residential floor of the building in the Phase.
3. The part of Emergency Vehicular Access adjacent to the building is 7.30 metres above the Hong Kong Principal Datum.
4. The part of footpath adjacent to the building is 7.40 metres above the Hong Kong Principal Datum.

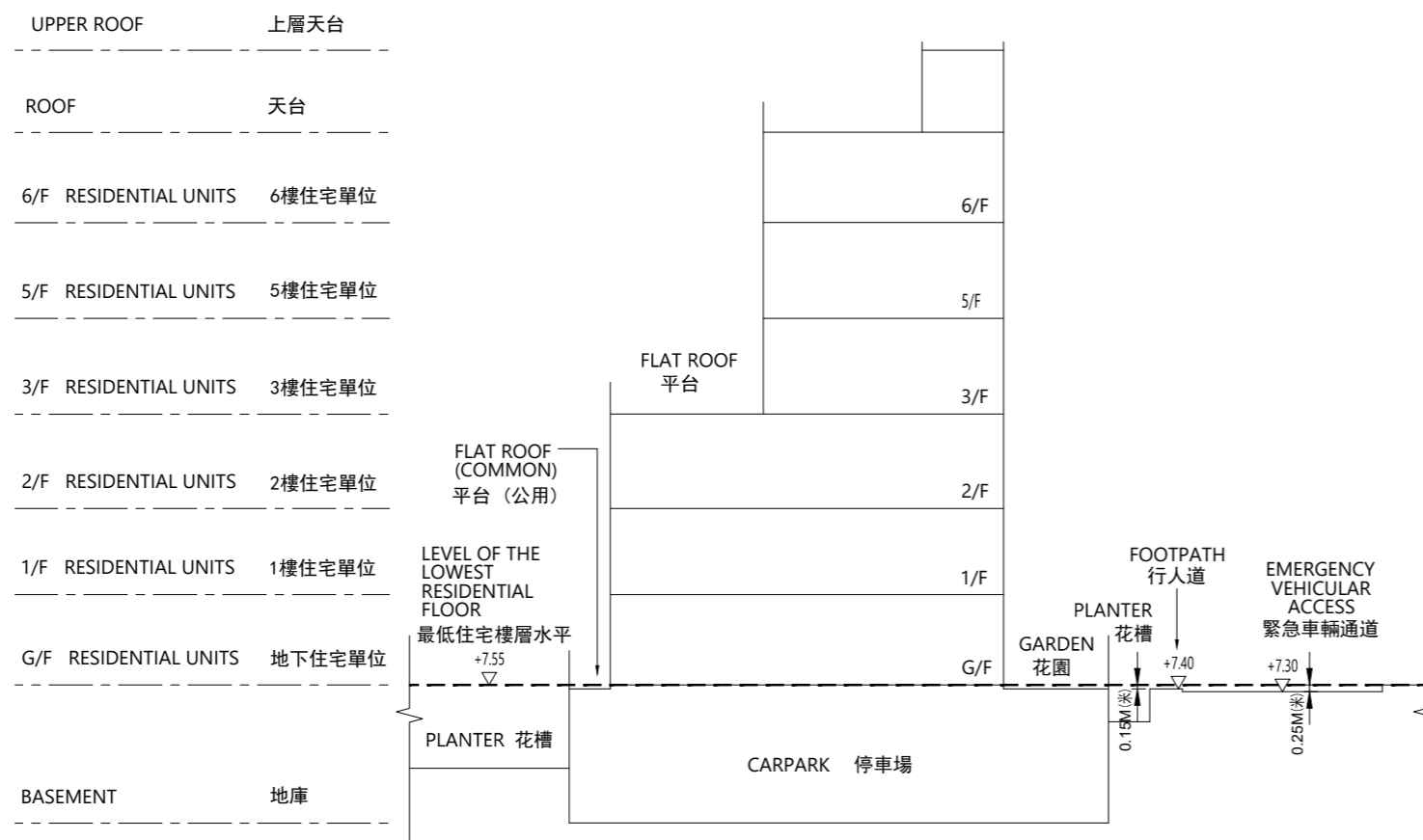
備註：

1. ∇ 代表香港主水平基準以上的高度(米)。
2. - - 虛線代表期數中建築物之最低住宅樓層水平。
3. 毗連建築物的一段緊急車輛通道為香港主水平基準以上7.30米。
4. 毗連建築物的一段行人道為香港主水平基準以上7.40米。

CROSS-SECTION PLAN OF BUILDING IN THE PHASE 期數中的建築物的橫截面圖



WV6
別墅WV6



CROSS-SECTION PLAN N1
橫截面圖 N1

NOTES:

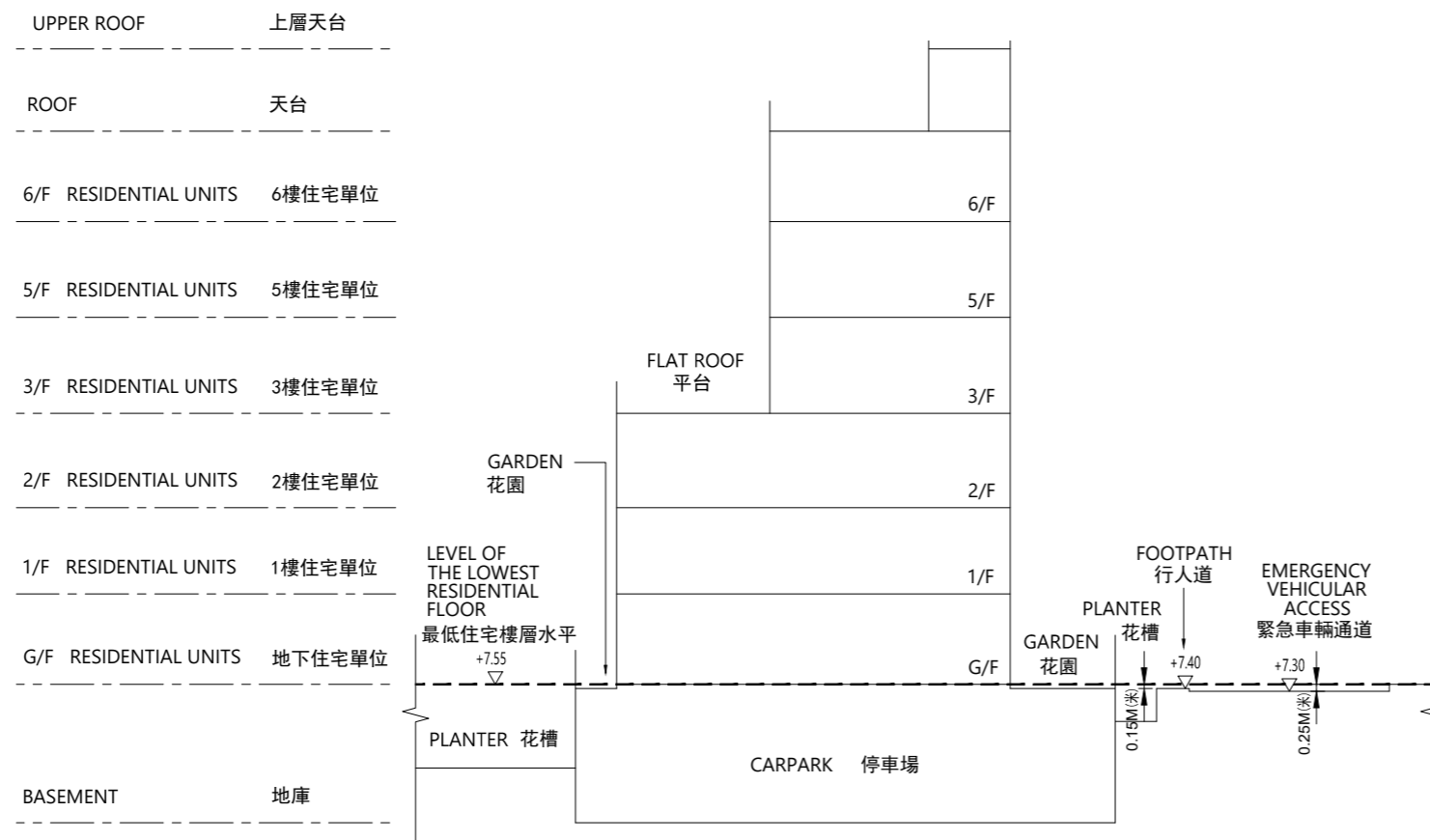
1. ∇ Denotes height (in metres) above the Hong Kong Principal Datum.
2. -- Dotted line denotes the level of the lowest residential floor of the building in the Phase.
3. The part of Emergency Vehicular Access adjacent to the building is 7.30 metres above the Hong Kong Principal Datum.
4. The part of footpath adjacent to the building is 7.40 metres above the Hong Kong Principal Datum.

備註:

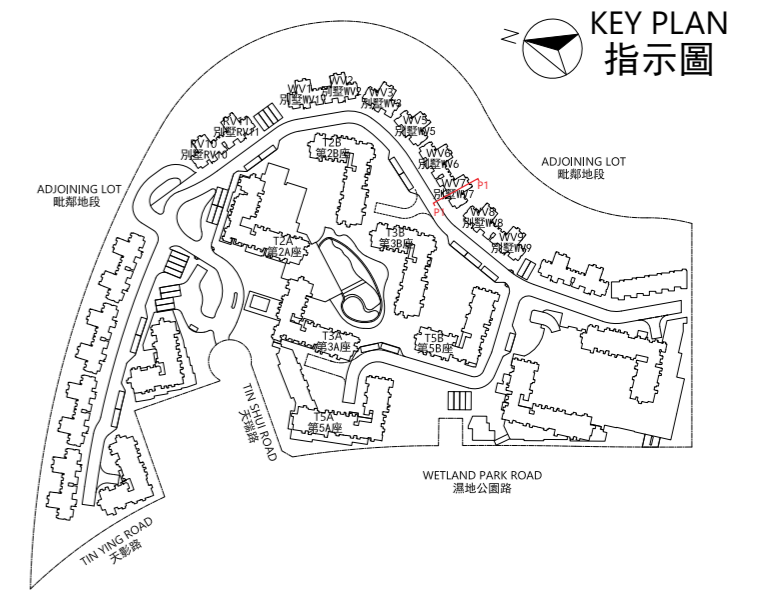
1. ∇ 代表香港主水平基準以上的高度(米)。
2. -- 虛線代表期數中建築物之最低住宅樓層水平。
3. 毗連建築物的一段緊急車輛通道為香港主水平基準以上7.30米。
4. 毗連建築物的一段行人道為香港主水平基準以上7.40米。

CROSS-SECTION PLAN OF BUILDING IN THE PHASE 期數中的建築物的橫截面圖

WV7 別墅WV7



CROSS-SECTION PLAN P1
橫截面圖 P1



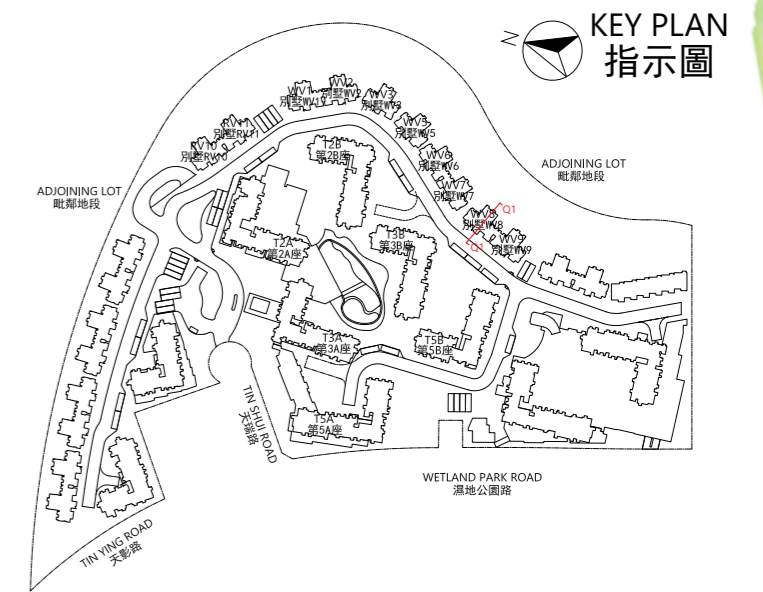
NOTES:

1. ∇ Denotes height (in metres) above the Hong Kong Principal Datum.
2. - - Dotted line denotes the level of the lowest residential floor of the building in the Phase.
3. The part of Emergency Vehicular Access adjacent to the building is 7.30 metres above the Hong Kong Principal Datum.
4. The part of footpath adjacent to the building is 7.40 metres above the Hong Kong Principal Datum.

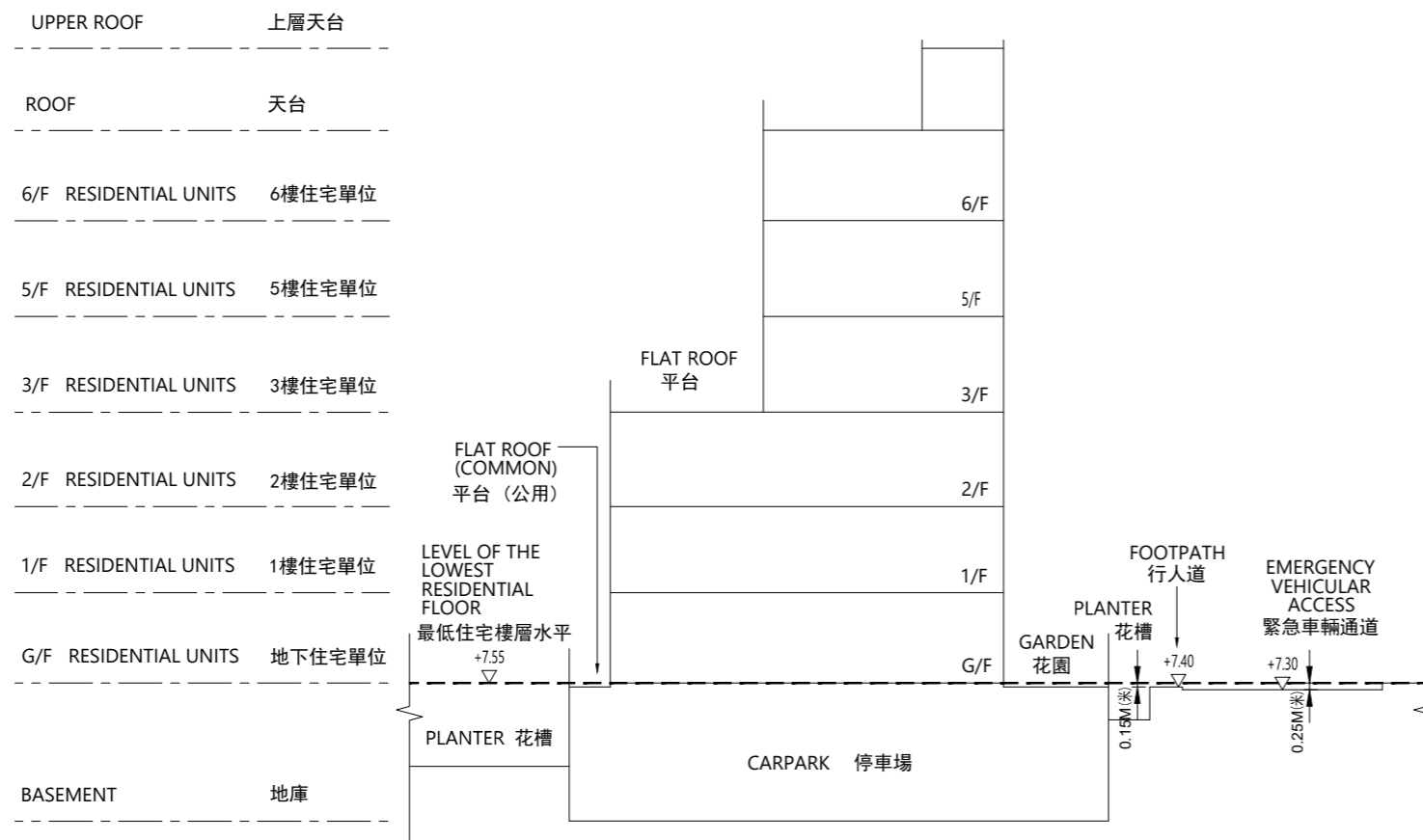
備註：

1. ∇ 代表香港主水平基準以上的高度(米)。
2. - - 虛線代表期數中建築物之最低住宅樓層水平。
3. 毗連建築物的一段緊急車輛通道為香港主水平基準以上7.30米。
4. 毗連建築物的一段行人道為香港主水平基準以上7.40米。

CROSS-SECTION PLAN OF BUILDING IN THE PHASE 期數中的建築物的橫截面圖



WV8
別墅WV8



CROSS-SECTION PLAN Q1
橫截面圖 Q1

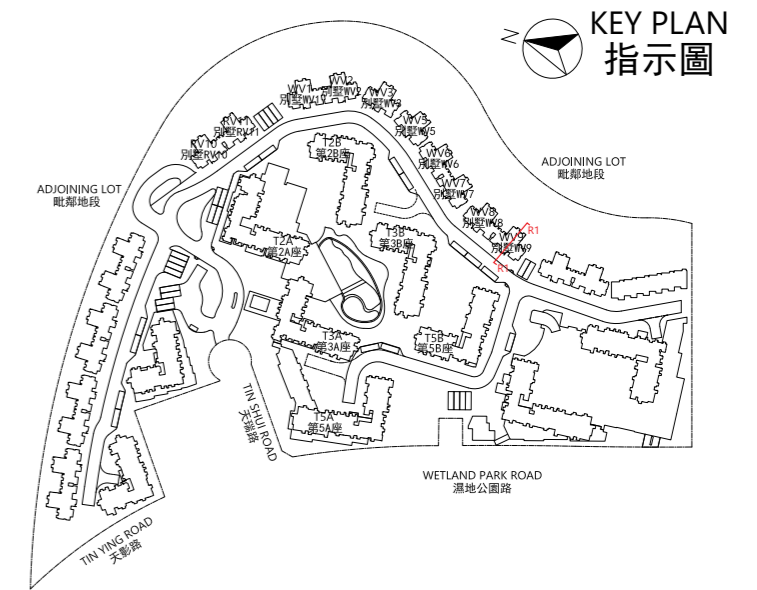
NOTES:

1. ∇ Denotes height (in metres) above the Hong Kong Principal Datum.
2. - - Dotted line denotes the level of the lowest residential floor of the building in the Phase.
3. The part of Emergency Vehicular Access adjacent to the building is 7.30 metres above the Hong Kong Principal Datum.
4. The part of footpath adjacent to the building is 7.40 metres above the Hong Kong Principal Datum.

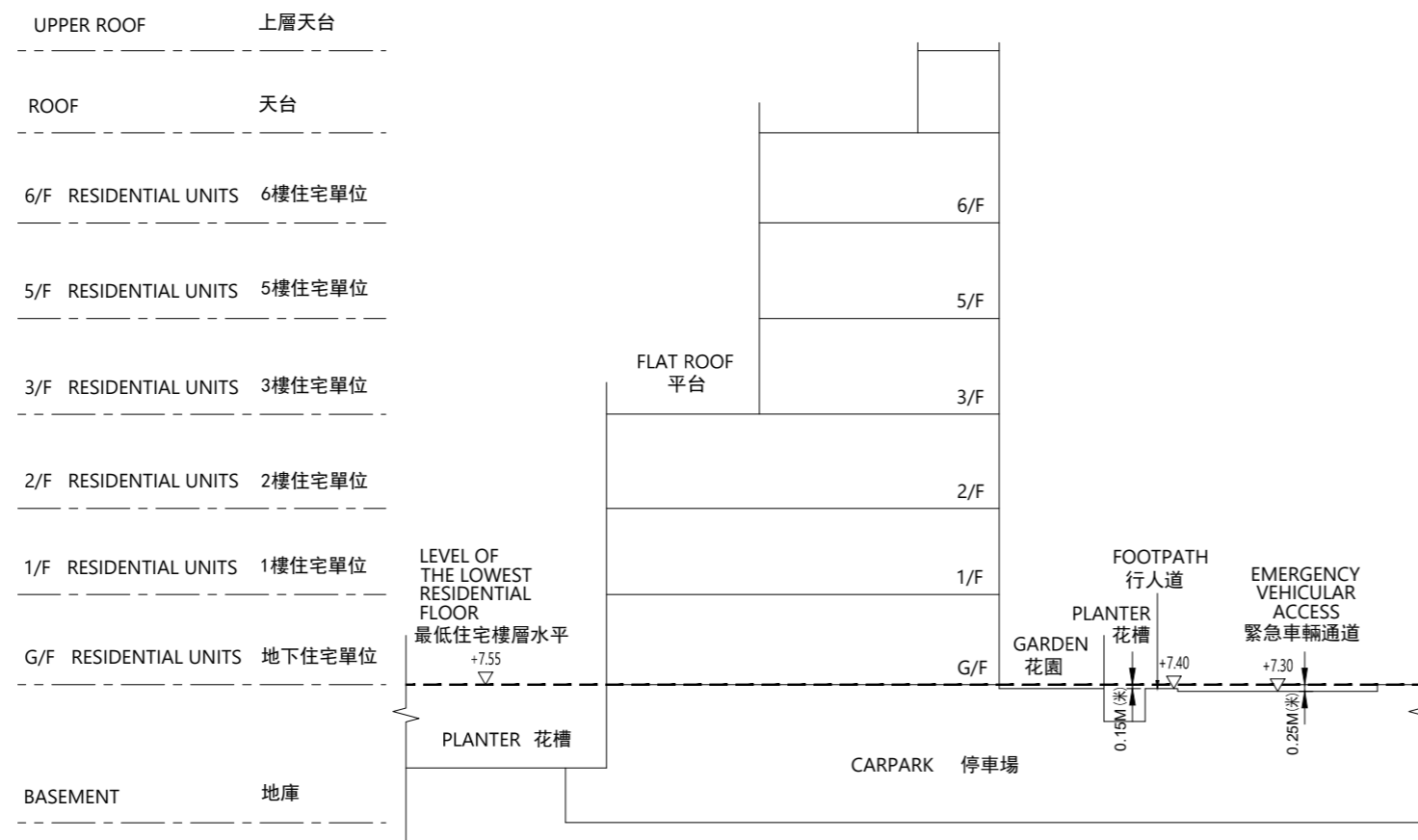
備註:

1. ∇ 代表香港主水平基準以上的高度(米)。
2. - - 虛線代表期數中建築物之最低住宅樓層水平。
3. 毗連建築物的一段緊急車輛通道為香港主水平基準以上7.30米。
4. 毗連建築物的一段行人道為香港主水平基準以上7.40米。

CROSS-SECTION PLAN OF BUILDING IN THE PHASE 期數中的建築物的橫截面圖



WV9
別墅WV9



CROSS-SECTION PLAN R1
橫截面圖 R1

NOTES:

1. ∇ Denotes height (in metres) above the Hong Kong Principal Datum.
2. - - Dotted line denotes the level of the lowest residential floor of the building in the Phase.
3. The part of Emergency Vehicular Access adjacent to the building is 7.30 metres above the Hong Kong Principal Datum.
4. The part of footpath adjacent to the building is 7.40 metres above the Hong Kong Principal Datum.

備註:

1. ∇ 代表香港主水平基準以上的高度(米)。
2. - - 虛線代表期數中建築物之最低住宅樓層水平。
3. 毗連建築物的一段緊急車輛通道為香港主水平基準以上7.30米。
4. 毗連建築物的一段行人道為香港主水平基準以上7.40米。