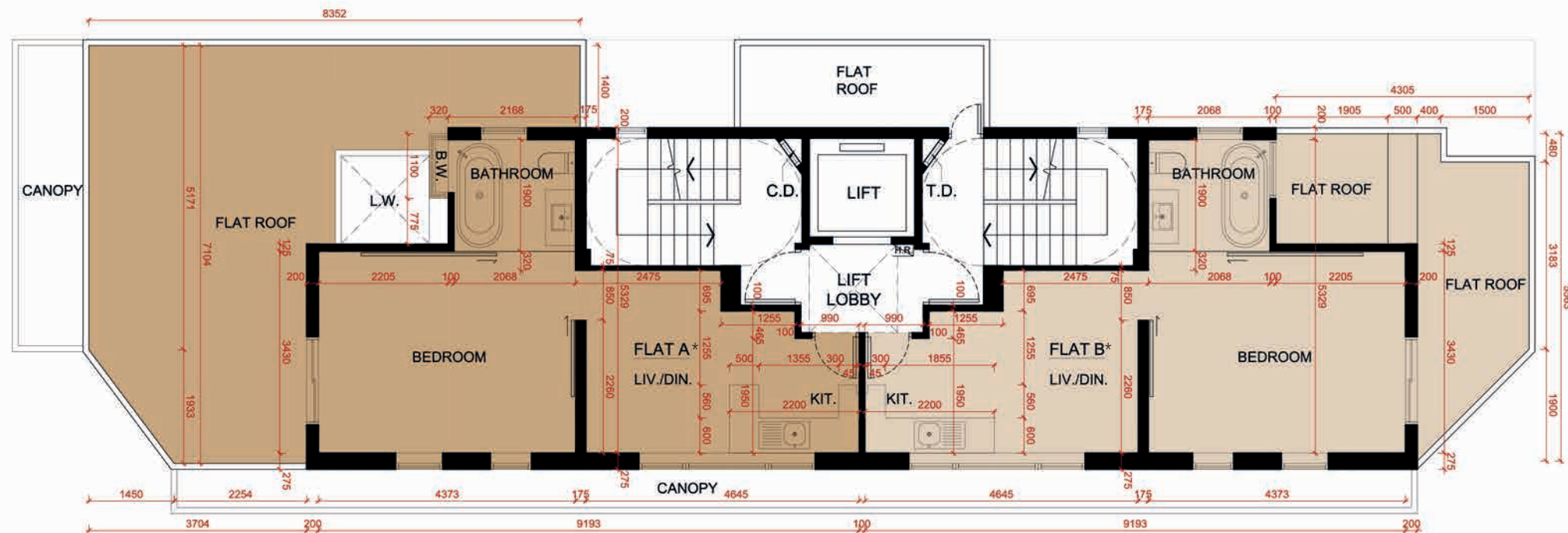


FLOOR PLANS OF RESIDENTIAL PROPERTIES IN THE DEVELOPMENT

發展項目的住宅物業的樓面平面圖



"As-is" Layout Plan
現狀平面圖

*Alterations have been made in the Living / Dining Room and Kitchen. Please refer to the latest approved building plans which are available at the sales office for details.
*客飯廳及廚房曾作出改動。詳情請參閱存於售樓處的最新批准建築圖則。

1/F FLOOR PLAN
1樓平面圖

Scale 比例尺



FLOOR PLANS OF RESIDENTIAL PROPERTIES IN THE DEVELOPMENT

發展項目的住宅物業的樓面平面圖

Legend of terms and abbreviations used on floor plans

樓面平面圖中所使用名詞之簡稱之圖例

BATHROOM = 浴室

BEDROOM = 睡房

B.W. = Bay Window = 窗台

C.D. = Cable Duct = 電線槽

CANOPY = 簷篷

FLAT ROOF = 平台

H.R. = 消防喉轆

LIFT = 升降機

LIFT LOBBY = 升降機大堂

LIV./DIN. = Living / Dining Room = 客飯廳

KIT. = Kitchen = 廚房

L.W. = Light Well = 天井

T.D. = Telephone Duct = 電話線槽

FLAT A = 單位A

FLAT B = 單位B

1. The dimensions in the floor plans are all structural dimensions in millimeters.
2. The floor-to-floor height of each residential property as provided in the approved building plans for the Development is 2800 mm*.
3. The thickness of the floor slabs (excluding plaster) of each residential property as provided in the approved building plans for the Development is 125mm.
4. The internal areas of the residential properties on the upper floors will generally be slightly larger than those on the lower floors because of reducing thickness of the structure walls on the upper floors.
5. The indications of fittings such as sinks, toilet bowls, shower heads and wash basins, etc. shown on the floor plans are indications of their approximate locations only and not indications of their actual size, design or shapes.
6. There may be architectural features and exposed pipes and/ or pipe covers on external walls. For details, please refer to the approved building plans for the Development.
7. There may be communal pipes and/ or mechanical and electrical services within flat roofs and roofs of some residential units.

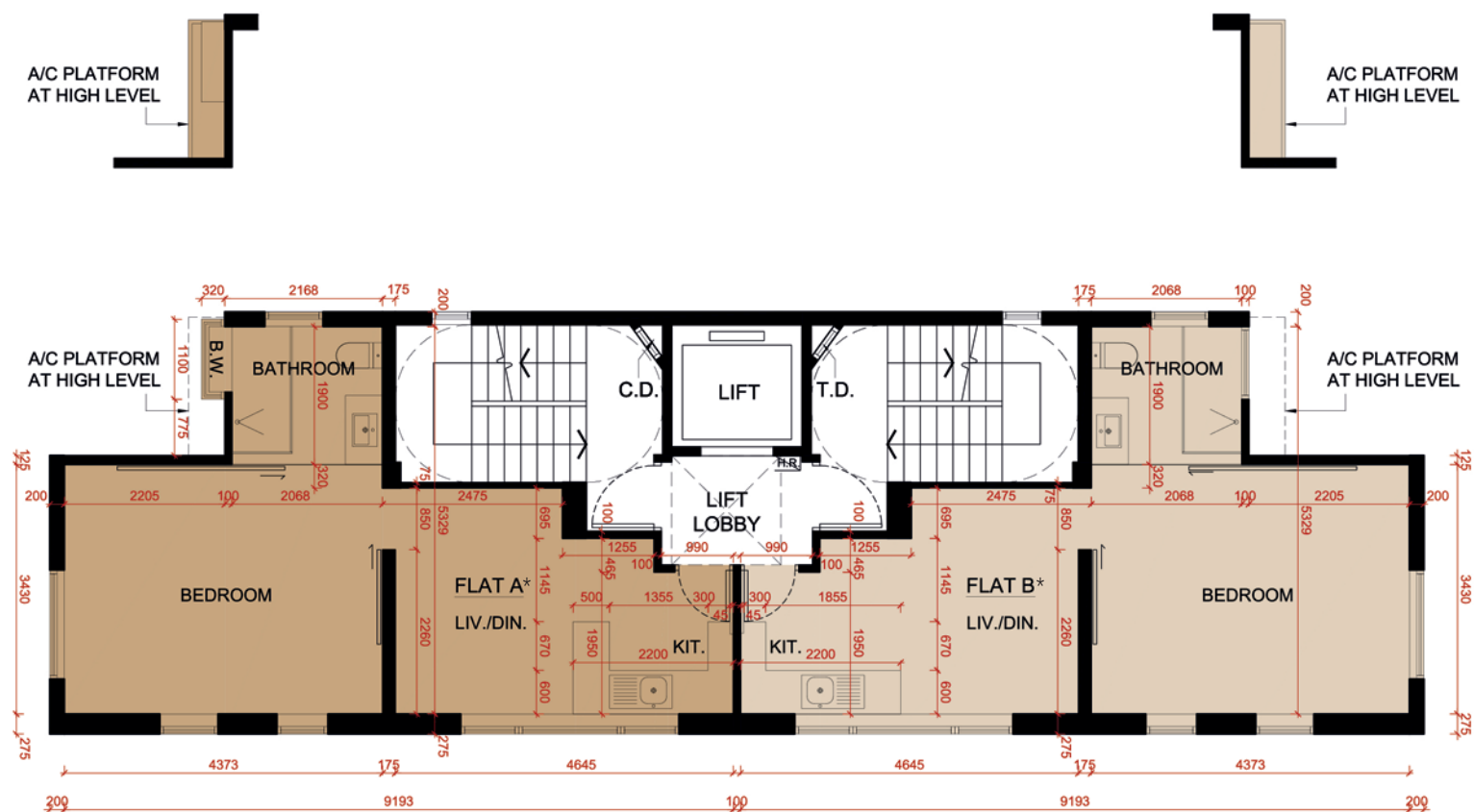
1. 樓面平面圖所列之尺寸數字為以毫米標示之建築結構尺寸。
2. 按發展項目的經批准的建築圖則，每個住宅物業的層與層之間的高度為2800毫米*。
3. 按發展項目的經批准的建築圖則，每個住宅物業的樓板（不包括灰泥）的厚度為125毫米。
4. 因住宅物業的較高樓層的結構牆的厚度遞減，較高樓層的內部面積，一般比較低樓層的內部面積稍大。
5. 樓面平面圖所示之裝置如洗滌盤、坐廁、花灑龍頭及洗手盆只供展示其大約位置而非展示其實際大小、設計或形狀。
6. 外牆或設有建築裝飾及外露喉管道及/或喉管蓋。詳細資料請參考發展項目的經批准的建築圖則。
7. 部分住宅單位之平台及天台內或裝有公用喉管及/或機電設備。

* Floor-to-floor height refers to the height between the top surface of the structural slab of a floor and the top surface of the structural slab of its immediate upper floor.

* 層與層之間的高度指該樓層之石屎地台面與上層石屎地台面之高度距離。

FLOOR PLANS OF RESIDENTIAL PROPERTIES IN THE DEVELOPMENT

發展項目的住宅物業的樓面平面圖



"As-is" Layout Plan
現狀平面圖

*Alterations have been made in the Living / Dining Room and Kitchen. Please refer to the latest approved building plans which are available at the sales office for details.
*客飯廳及廚房曾作出改動。詳情請參閱存於售樓處的最新批准建築圖則。

2/F-3/F, 5/F-9/F, 11/F-13/F, 15/F-22/F & 25/F-27/F FLOOR PLAN
2樓-3樓, 5樓-9樓, 11樓-13樓, 15樓-22樓及25樓-27樓平面圖

Scale 比例尺

0 5M / 米



FLOOR PLANS OF RESIDENTIAL PROPERTIES IN THE DEVELOPMENT

發展項目的住宅物業的樓面平面圖

Legend of terms and abbreviations used on floor plans

樓面平面圖中所使用名詞之簡稱之圖例

A/C PLATFORM AT HIGH LEVEL= Air-conditioning Platform at high level = 設於高位的冷氣機平台

BATHROOM = 浴室

BEDROOM = 睡房

B.W. = Bay Window = 窗台

C.D. = Cable Duct = 電線槽

H.R. = 消防喉轆

LIFT = 升降機

LIFT LOBBY = 升降機大堂

LIV./DIN. = Living / Dining Room = 客飯廳

KIT. = Kitchen = 廚房

T.D. = Telephone Duct = 電話線槽

FLAT A = 單位A

FLAT B = 單位B

1. The dimensions in the floor plans are all structural dimensions in millimeters.
2. The floor-to-floor height of each residential property as provided in the approved building plans for the Development is 2800 mm*.
3. The thickness of the floor slabs (excluding plaster) of each residential property as provided in the approved building plans for the Development is 125mm.
4. The internal areas of the residential properties on the upper floors will generally be slightly larger than those on the lower floors because of reducing thickness of the structure walls on the upper floors.
5. The indications of fittings such as sinks, toilet bowls, shower heads and wash basins, etc. shown on the floor plans are indications of their approximate locations only and not indications of their actual size, design or shapes.
6. There may be architectural features and exposed pipes and/ or pipe covers on external walls. For details, please refer to the approved building plans for the Development.
7. There may be communal pipes and/ or mechanical and electrical services within flat roofs and roofs of some residential units.

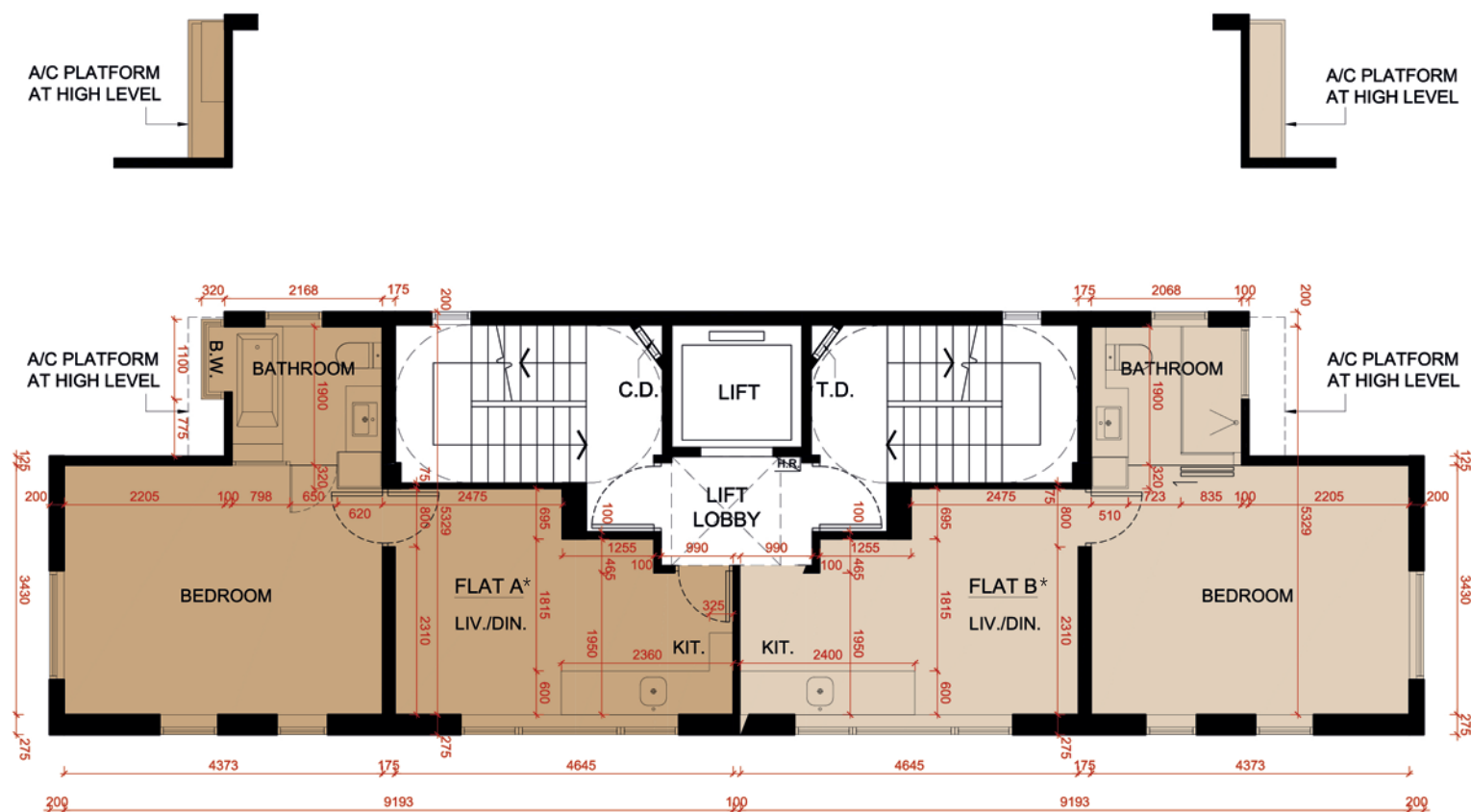
1. 樓面平面圖所列之尺寸數字為以毫米標示之建築結構尺寸。
2. 按發展項目的經批准的建築圖則，每個住宅物業的層與層之間的高度為2800毫米*。
3. 按發展項目的經批准的建築圖則，每個住宅物業的樓板（不包括灰泥）的厚度為125毫米
4. 因住宅物業的較高樓層的結構牆的厚度遞減，較高樓層的內部面積，一般比較低樓層的內部面積稍大。
5. 樓面平面圖所示之裝置如洗滌盤、浴缸、坐廁、花灑龍頭及洗手盆只供展示其大約位置而非展示其實際大小、設計或形狀。
6. 外牆或設有建築裝飾及外露喉管道及/或喉管蓋。詳細資料請參考發展項目的經批准的建築圖則。
7. 部分住宅單位之平台及天台內或裝有公用喉管及/或機電設備。

* Floor-to-floor height refers to the height between the top surface of the structural slab of a floor and the top surface of the structural slab of its immediate upper floor.

* 層與層之間的高度指該樓層之石屎地台面與上層石屎地台面之高度距離。

FLOOR PLANS OF RESIDENTIAL PROPERTIES IN THE DEVELOPMENT

發展項目的住宅物業的樓面平面圖



"As-is" Layout Plan
現狀平面圖

*Alterations have been made in the Living / Dining Room and Kitchen. Please refer to the latest approved building plans which are available at the sales office for details.
*客飯廳及廚房曾作出改動。詳情請參閱存於售樓處的最新批准建築圖則。

10/F & 23/F FLOOR PLAN
10樓及23樓平面圖

Scale 比例尺
0 5M / 米



FLOOR PLANS OF RESIDENTIAL PROPERTIES IN THE DEVELOPMENT

發展項目的住宅物業的樓面平面圖

Legend of terms and abbreviations used on floor plans

樓面平面圖中所使用名詞之簡稱之圖例

A/C PLATFORM AT HIGH LEVEL= Air-conditioning Platform at high level = 設於高位的冷氣機平台

BATHROOM = 浴室

BEDROOM = 睡房

B.W. = Bay Window = 窗台

C.D. = Cable Duct = 電線槽

H.R. = 消防喉轆

LIFT = 升降機

LIFT LOBBY = 升降機大堂

LIV./DIN. = Living / Dining Room = 客飯廳

KIT. = Kitchen = 廚房

T.D. = Telephone Duct = 電話線槽

FLAT A = 單位A

FLAT B = 單位B

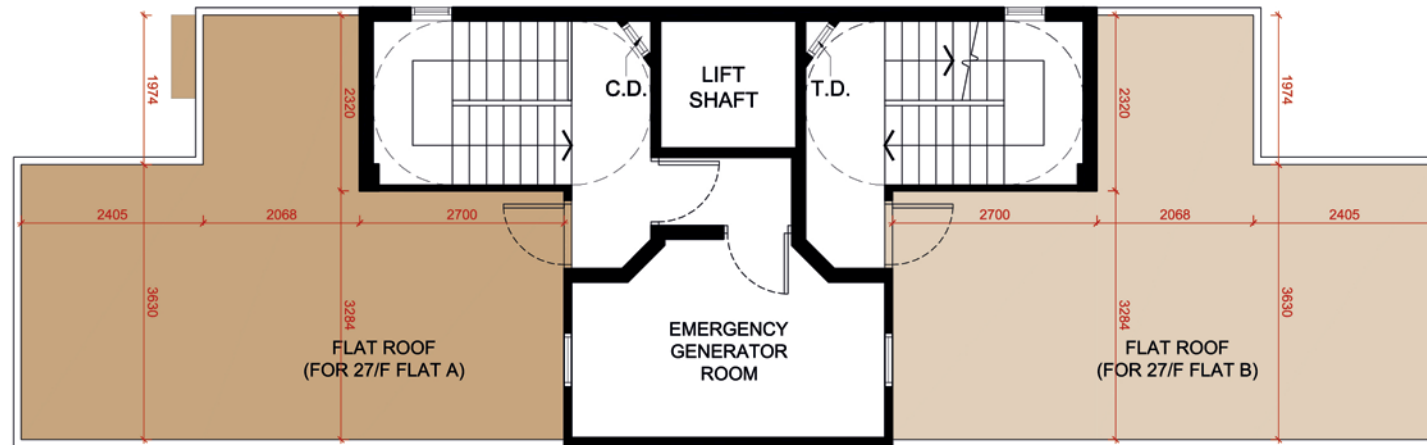
1. The dimensions in the floor plans are all structural dimensions in millimeters.
2. The floor-to-floor height of each residential property as provided in the approved building plans for the Development is 2800 mm*.
3. The thickness of the floor slabs (excluding plaster) of each residential property as provided in the approved building plans for the Development is 125mm.
4. The internal areas of the residential properties on the upper floors will generally be slightly larger than those on the lower floors because of reducing thickness of the structure walls on the upper floors.
5. The indications of fittings such as sinks, toilet bowls, shower heads and wash basins, etc. shown on the floor plans are indications of their approximate locations only and not indications of their actual size, design or shapes.
6. There may be architectural features and exposed pipes and/ or pipe covers on external walls. For details, please refer to the approved building plans for the Development.
7. There may be communal pipes and/ or mechanical and electrical services within flat roofs and roofs of some residential units.

1. 樓面平面圖所列之尺寸數字為以毫米標示之建築結構尺寸。
2. 按發展項目的經批准的建築圖則，每個住宅物業的層與層之間的高度為2800毫米*。
3. 按發展項目的經批准的建築圖則，每個住宅物業的樓板（不包括灰泥）的厚度為125毫米。
4. 因住宅物業的較高樓層的結構牆的厚度遞減，較高樓層的內部面積，一般比較低樓層的內部面積稍大。
5. 樓面平面圖所示之裝置如洗滌盤、浴缸、坐廁、花灑龍頭及洗手盆只供展示其大約位置而非展示其實際大小、設計或形狀。
6. 外牆或設有建築裝飾及外露喉管道及/或喉管蓋。詳細資料請參考發展項目的經批准的建築圖則。
7. 部分住宅單位之平台及天台內或裝有公用喉管及/或機電設備。

* Floor-to-floor height refers to the height between the top surface of the structural slab of a floor and the top surface of the structural slab of its immediate upper floor.

* 層與層之間的高度指該樓層之石屎地台面與上層石屎地台面之高度距離。

FLOOR PLANS OF RESIDENTIAL PROPERTIES IN THE DEVELOPMENT
發展項目的住宅物業的樓面平面圖



ROOF FLOOR PLAN
天台平面圖

Scale 比例尺

0 5M / 米

