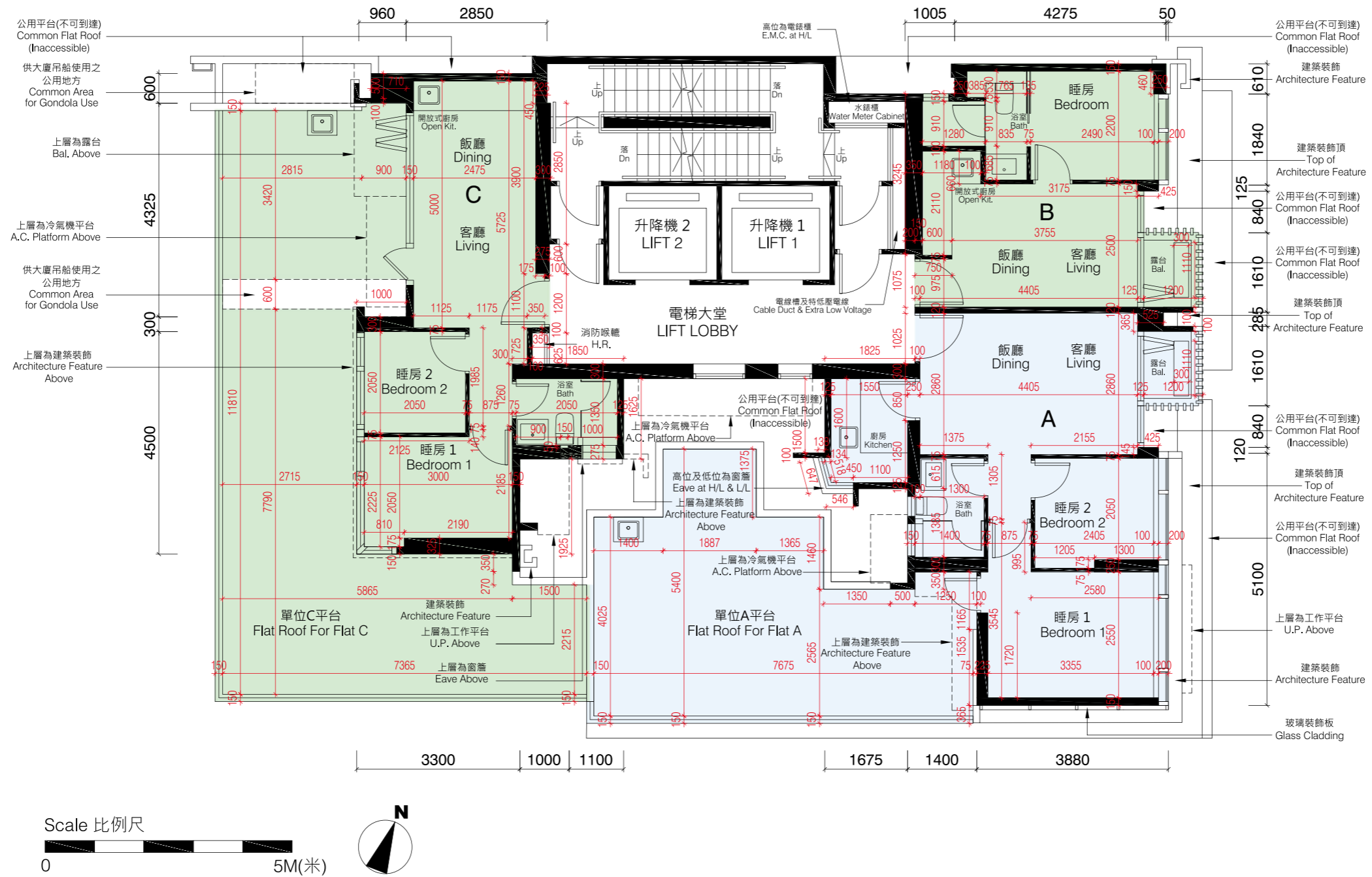


# 1 FLOOR PLANS OF RESIDENTIAL PROPERTIES IN THE DEVELOPMENT

## 發展項目的住宅物業的樓面平面圖

### 2/F FLOOR PLAN

#### 二樓平面圖



#### Notes:

1. Please refer to page 17 of this sales brochure for the legend of the terms and abbreviations for the floor plans and notes that are applicable thereto.
2. The dimensions of floor plans are all structural dimensions in millimetre.

#### 備註：

1. 以上樓面平面圖中顯示之名詞及簡稱之圖例及其適用的備註，請參閱本售樓說明書第17頁之說明。
2. 樓面平面圖所列之尺寸數字為以毫米標示的建築結構尺寸。

# 1 FLOOR PLANS OF RESIDENTIAL PROPERTIES IN THE DEVELOPMENT

## 發展項目的住宅物業的樓面平面圖

2/F 二樓	Flat 單位		
	A	B	C
Thickness of Floor Slabs (excluding plaster) of each residential property (mm) 每個住宅物業的樓板厚度 (不包括灰泥) (毫米)	125, 150	125, 150	125, 150
Floor-to-Floor Height (note: refers to the height between the top surface of the structural slab of a floor and the top surface of the structural slab of its immediate upper floor) of each residential property (mm) 每個住宅物業的層與層之間的高度 (註：指該樓層之石屎地台面與上一層石屎地台面之高度距離) (毫米)	2825 3150	2825 3150	3150

The internal areas of the residential properties on the upper floors will generally be slightly larger than those on the lower floors because of the reducing thickness of the structural walls on the upper floors.

因住宅物業的較高樓層的結構牆的厚度遞減，較高樓層的內部面積，一般比較低樓層的內部面積稍大。

Notes:

1. Please refer to page 17 of this sales brochure for the legend of the terms and abbreviations for the floor plans and notes that are applicable thereto.
2. The dimensions of floor plans are all structural dimensions in millimetre.

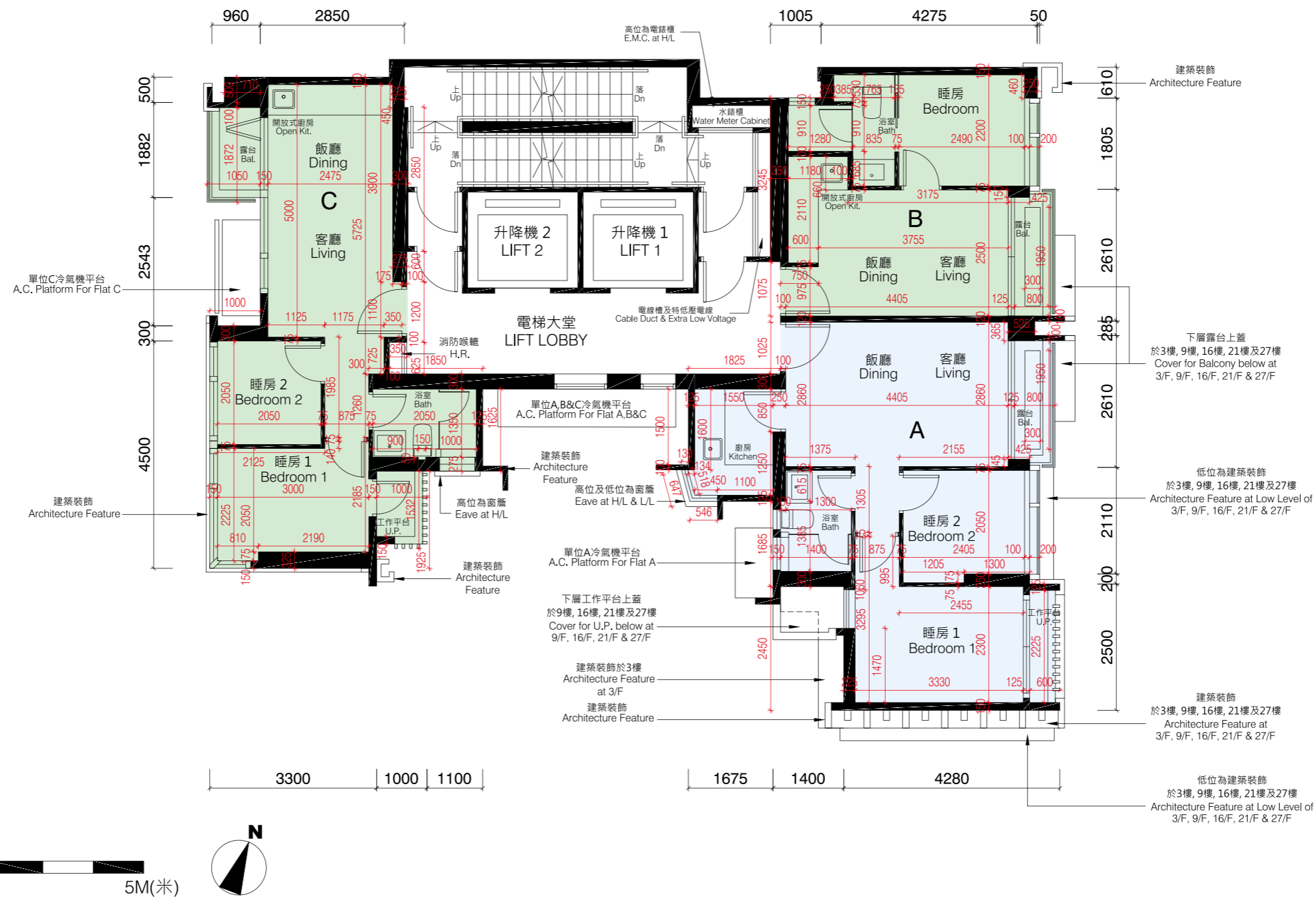
備註：

1. 以上樓面平面圖中顯示之名詞及簡稱之圖例及其適用的備註，請參閱本售樓說明書第17頁之說明。
2. 樓面平面圖所列之尺寸數字為以毫米標示的建築結構尺寸。

# 1 FLOOR PLANS OF RESIDENTIAL PROPERTIES IN THE DEVELOPMENT 發展項目的住宅物業的樓面平面圖

## 3/F, 5/F, 6/F, 9/F - 11/F, 16/F - 18/F, 21/F - 23/F and 27/F FLOOR PLAN

三樓，五樓，六樓，九樓至十一樓，十六樓至十八樓，二十一樓至二十三樓及二十七樓平面圖



### Notes:

1. Please refer to page 17 of this sales brochure for the legend of the terms and abbreviations for the floor plans and notes that are applicable thereto.
2. The dimensions of floor plans are all structural dimensions in millimetre.

### 備註：

1. 以上樓面平面圖中顯示之名詞及簡稱之圖例及其適用的備註，請參閱本售樓說明書第17頁之說明。
2. 樓面平面圖所列之尺寸數字為以毫米標示的建築結構尺寸。

# 1 FLOOR PLANS OF RESIDENTIAL PROPERTIES IN THE DEVELOPMENT

## 發展項目的住宅物業的樓面平面圖

3/F, 5/F, 9/F-10/F, 16/F-17/F, 21-22/F, 27/F 三樓，五樓，九樓至十樓，十六樓至十七樓，二十一樓至二十二樓，二十七樓	Flat 單位		
	A	B	C
Thickness of Floor Slabs (excluding plaster) of each residential property (mm) 每個住宅物業的樓板厚度 (不包括灰泥) (毫米)	125, 150, 175	125, 150	125, 150
Floor-to-Floor Height (note: refers to the height between the top surface of the structural slab of a floor and the top surface of the structural slab of its immediate upper floor) of each residential property (mm) 每個住宅物業的層與層之間的高度 (註：指該樓層之石屎地台面與上一層石屎地台面之高度距離) (毫米)	3150	3150	3150

6/F, 11/F, 18/F, 23/F 六樓，十一樓，十八樓，二十三樓	Flat 單位		
	A	B	C
Thickness of Floor Slabs (excluding plaster) of each residential property (mm) 每個住宅物業的樓板厚度 (不包括灰泥) (毫米)	125, 150	125, 150	125, 150
Floor-to-Floor Height (note: refers to the height between the top surface of the structural slab of a floor and the top surface of the structural slab of its immediate upper floor) of each residential property (mm) 每個住宅物業的層與層之間的高度 (註：指該樓層之石屎地台面與上一層石屎地台面之高度距離) (毫米)	2825 3150	2825 3150	3150

The internal areas of the residential properties on the upper floors will generally be slightly larger than those on the lower floors because of the reducing thickness of the structural walls on the upper floors.

因住宅物業的較高樓層的結構牆的厚度遞減，較高樓層的內部面積，一般比較低樓層的內部面積稍大。

Notes:

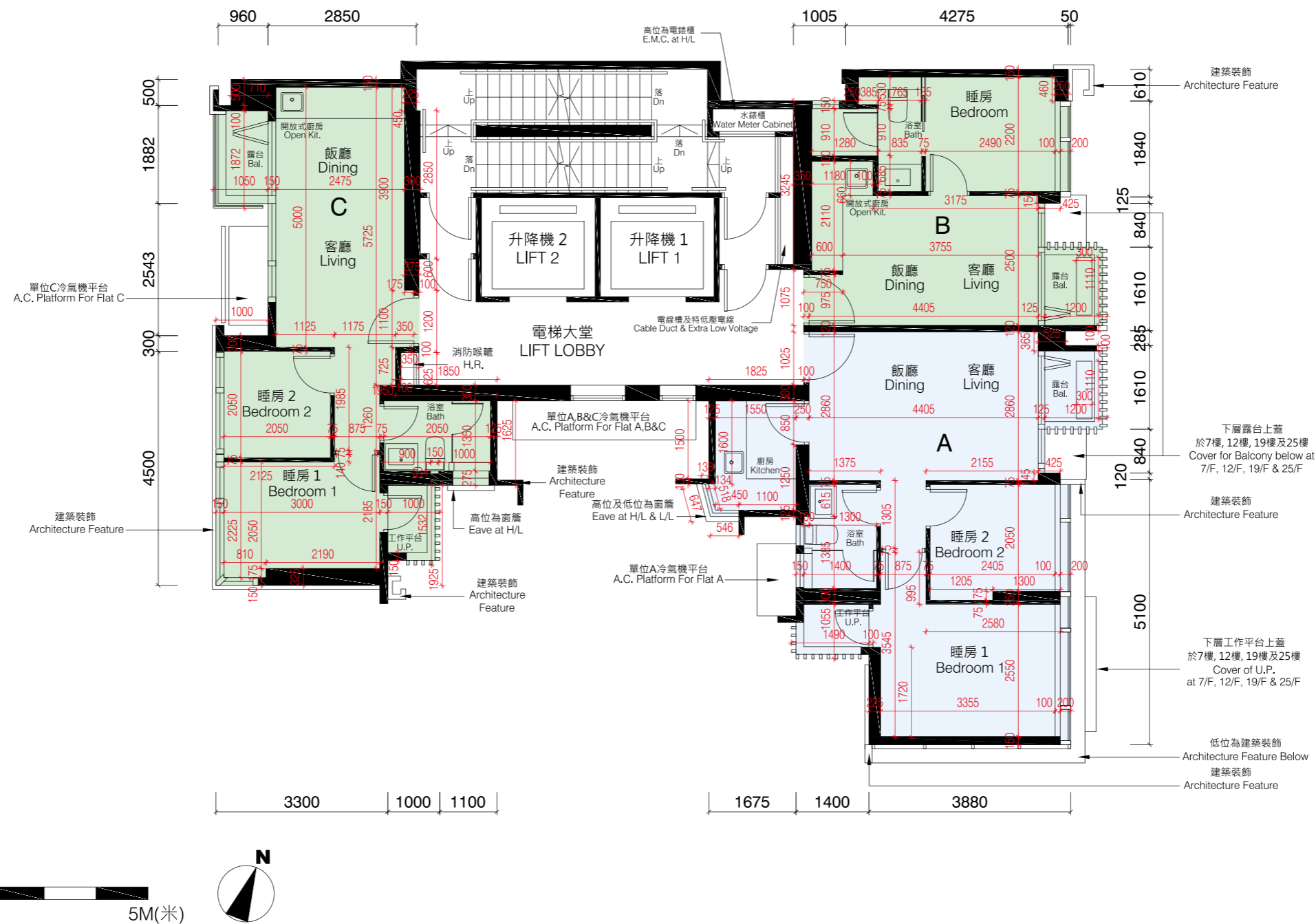
- Please refer to page 17 of this sales brochure for the legend of the terms and abbreviations for the floor plans and notes that are applicable thereto.
- The dimensions of floor plans are all structural dimensions in millimetre.

備註：

- 以上樓面平面圖中顯示之名詞及簡稱之圖例及其適用的備註，請參閱本售樓說明書第17頁之說明。
- 樓面平面圖所列之尺寸數字為以毫米標示的建築結構尺寸。

# 1 FLOOR PLANS OF RESIDENTIAL PROPERTIES IN THE DEVELOPMENT 發展項目的住宅物業的樓面平面圖

## 7/F, 8/F, 12/F, 15/F, 19/F, 20/F, 25/F and 26/F FLOOR PLAN 七樓，八樓，十二樓，十五樓，十九樓，二十樓，二十五樓及二十六樓平面圖



### Notes:

1. Please refer to page 17 of this sales brochure for the legend of the terms and abbreviations for the floor plans and notes that are applicable thereto.
2. The dimensions of floor plans are all structural dimensions in millimetre.

### 備註：

1. 以上樓面平面圖中顯示之名詞及簡稱之圖例及其適用的備註，請參閱本售樓說明書第17頁之說明。
2. 樓面平面圖所列之尺寸數字為以毫米標示的建築結構尺寸。

# 1 FLOOR PLANS OF RESIDENTIAL PROPERTIES IN THE DEVELOPMENT

## 發展項目的住宅物業的樓面平面圖

7/F, 12/F, 19/F, 25/F 七樓，十二樓，十九樓，二十五樓	Flat 單位		
	A	B	C
Thickness of Floor Slabs (excluding plaster) of each residential property (mm) 每個住宅物業的樓板厚度 (不包括灰泥) (毫米)	125, 150	125, 150	125, 150
Floor-to-Floor Height (note: refers to the height between the top surface of the structural slab of a floor and the top surface of the structural slab of its immediate upper floor) of each residential property (mm) 每個住宅物業的層與層之間的高度 (註：指該樓層之石屎地台面與上一層石屎地台面之高度距離) (毫米)	3150	3150	3150

8/F, 15/F, 20/F, 26/F 八樓，十五樓，二十樓，二十六樓	Flat 單位		
	A	B	C
Thickness of Floor Slabs (excluding plaster) of each residential property (mm) 每個住宅物業的樓板厚度 (不包括灰泥) (毫米)	125, 150	125, 150	125, 150
Floor-to-Floor Height (note: refers to the height between the top surface of the structural slab of a floor and the top surface of the structural slab of its immediate upper floor) of each residential property (mm) 每個住宅物業的層與層之間的高度 (註：指該樓層之石屎地台面與上一層石屎地台面之高度距離) (毫米)	2825 3150	2825 3150	3150

The internal areas of the residential properties on the upper floors will generally be slightly larger than those on the lower floors because of the reducing thickness of the structural walls on the upper floors.

因住宅物業的較高樓層的結構牆的厚度遞減，較高樓層的內部面積，一般比較低樓層的內部面積稍大。

Notes:

1. Please refer to page 17 of this sales brochure for the legend of the terms and abbreviations for the floor plans and notes that are applicable thereto.
2. The dimensions of floor plans are all structural dimensions in millimetre.

備註：

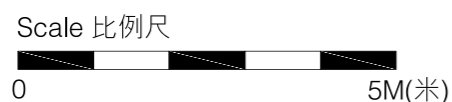
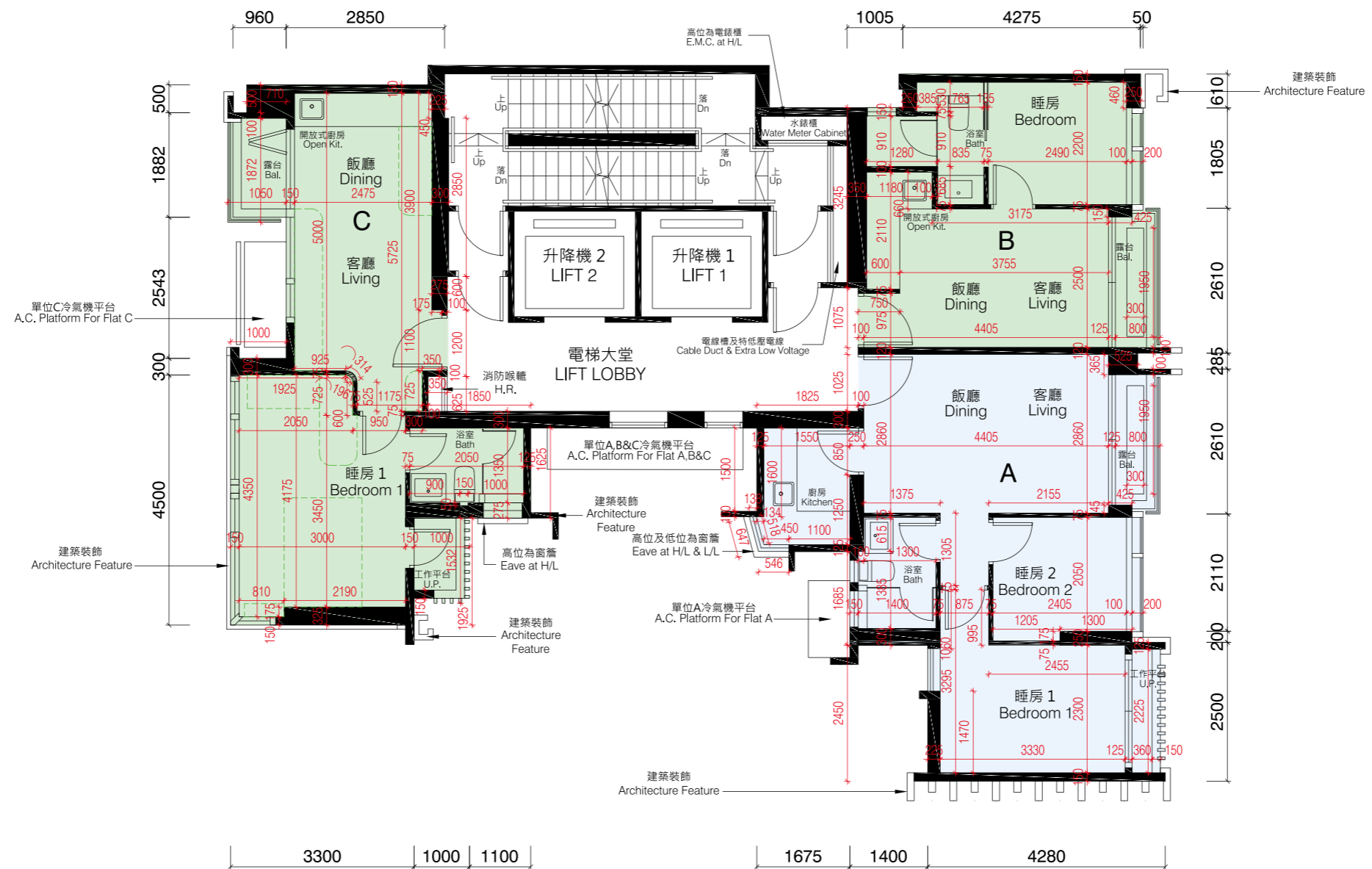
1. 以上樓面平面圖中顯示之名詞及簡稱之圖例及其適用的備註，請參閱本售樓說明書第17頁之說明。
2. 樓面平面圖所列之尺寸數字為以毫米標示的建築結構尺寸。

# 1 FLOOR PLANS OF RESIDENTIAL PROPERTIES IN THE DEVELOPMENT

## 發展項目的住宅物業的樓面平面圖

### 28/F FLOOR PLAN

#### 二十八樓平面圖



  Built-in Fittings Provided in the Flat  
隨樓附送嵌入式裝置

Notes:

1. Please refer to page 17 of this sales brochure for the legend of the terms and abbreviations for the floor plans and notes that are applicable thereto.
2. The dimensions of floor plans are all structural dimensions in millimetre.

備註：

1. 以上樓面平面圖中顯示之名詞及簡稱之圖例及其適用的備註，請參閱本售樓說明書第17頁之說明。
2. 樓面平面圖所列之尺寸數字為以毫米標示的建築結構尺寸。

# 1 FLOOR PLANS OF RESIDENTIAL PROPERTIES IN THE DEVELOPMENT

## 發展項目的住宅物業的樓面平面圖

28/F 二十八樓	Flat 單位		
	A	B	C
Thickness of Floor Slabs (excluding plaster) of each residential property (mm) 每個住宅物業的樓板厚度 (不包括灰泥) (毫米)	125, 175, 200	125, 200	125, 150
Floor-to-Floor Height (note: refers to the height between the top surface of the structural slab of a floor and the top surface of the structural slab of its immediate upper floor) of each residential property (mm) 每個住宅物業的層與層之間的高度 (註：指該樓層之石屎地台面與上一層石屎地台面之高度距離) (毫米)	2800 2850 3050 3150	2800 2900 3150	3150

The internal areas of the residential properties on the upper floors will generally be slightly larger than those on the lower floors because of the reducing thickness of the structural walls on the upper floors.

因住宅物業的較高樓層的結構牆的厚度遞減，較高樓層的內部面積，一般比較低樓層的內部面積稍大。

Notes:

1. Please refer to page 17 of this sales brochure for the legend of the terms and abbreviations for the floor plans and notes that are applicable thereto.
2. The dimensions of floor plans are all structural dimensions in millimetre.

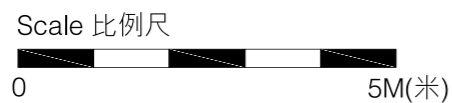
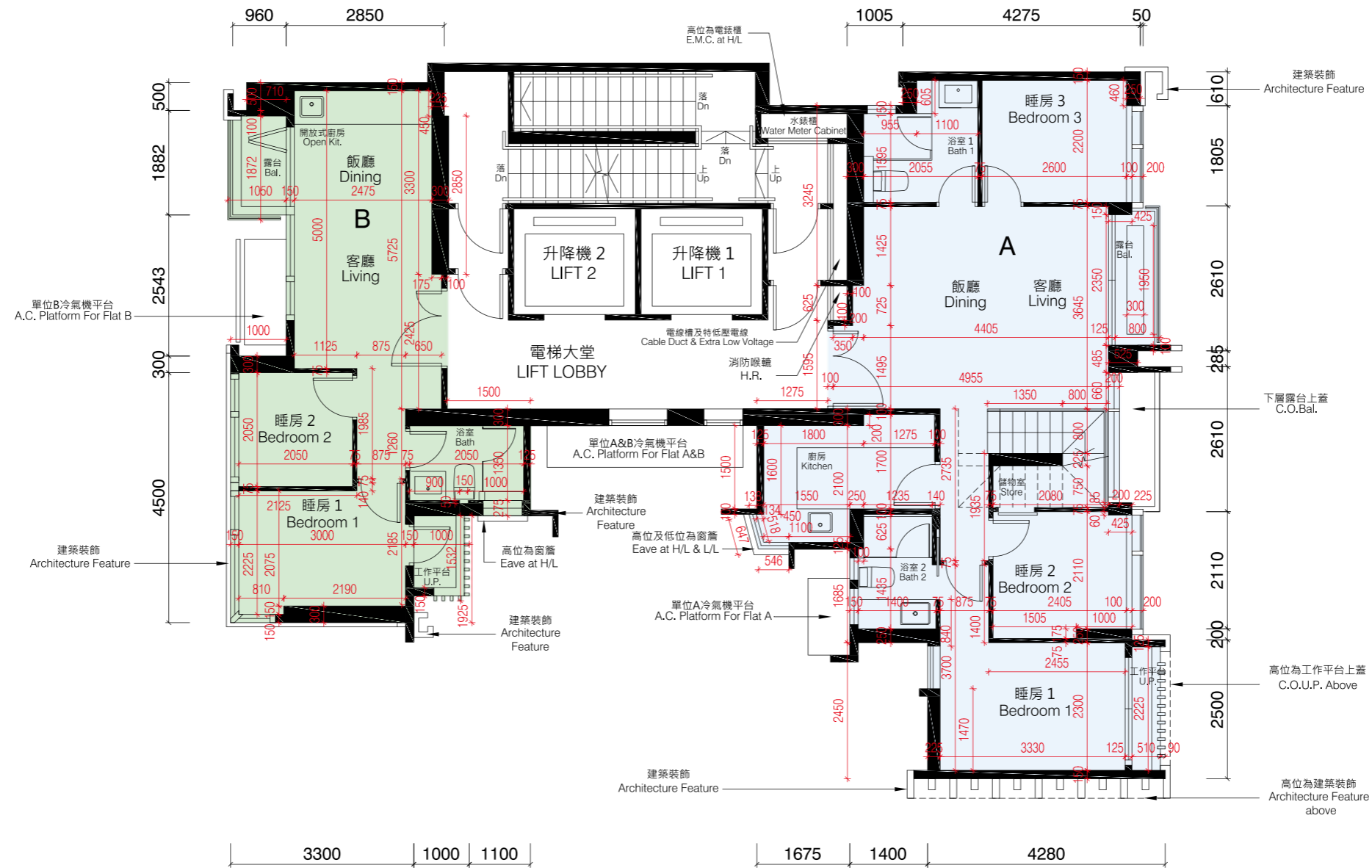
備註：

1. 以上樓面平面圖中顯示之名詞及簡稱之圖例及其適用的備註，請參閱本售樓說明書第17頁之說明。
2. 樓面平面圖所列之尺寸數字為以毫米標示的建築結構尺寸。



# 1 FLOOR PLANS OF RESIDENTIAL PROPERTIES IN THE DEVELOPMENT 發展項目的住宅物業的樓面平面圖

## 29/F FLOOR PLAN 二十九樓平面圖



Notes:

1. Please refer to page 17 of this sales brochure for the legend of the terms and abbreviations for the floor plans and notes that are applicable thereto.
2. The dimensions of floor plans are all structural dimensions in millimetre.

備註：

1. 以上樓面平面圖中顯示之名詞及簡稱之圖例及其適用的備註，請參閱本售樓說明書第17頁之說明。
2. 樓面平面圖所列之尺寸數字為以毫米標示的建築結構尺寸。

# 1 FLOOR PLANS OF RESIDENTIAL PROPERTIES IN THE DEVELOPMENT

## 發展項目的住宅物業的樓面平面圖

29/F 二十九樓	Flat 單位	
	A	B
Thickness of Floor Slabs (excluding plaster) of each residential property (mm) 每個住宅物業的樓板厚度 (不包括灰泥) (毫米)	175	175
Floor-to-Floor Height (note: refers to the height between the top surface of the structural slab of a floor and the top surface of the structural slab of its immediate upper floor) of each residential property (mm) 每個住宅物業的層與層之間的高度 (註：指該樓層之石屎地台面與上一層石屎地台面之高度距離) (毫米)	3500	3500

The internal areas of the residential properties on the upper floors will generally be slightly larger than those on the lower floors because of the reducing thickness of the structural walls on the upper floors.

因住宅物業的較高樓層的結構牆的厚度遞減，較高樓層的內部面積，一般比較低樓層的內部面積稍大。

Notes:

1. Please refer to page 17 of this sales brochure for the legend of the terms and abbreviations for the floor plans and notes that are applicable thereto.
2. The dimensions of floor plans are all structural dimensions in millimetre.

備註：

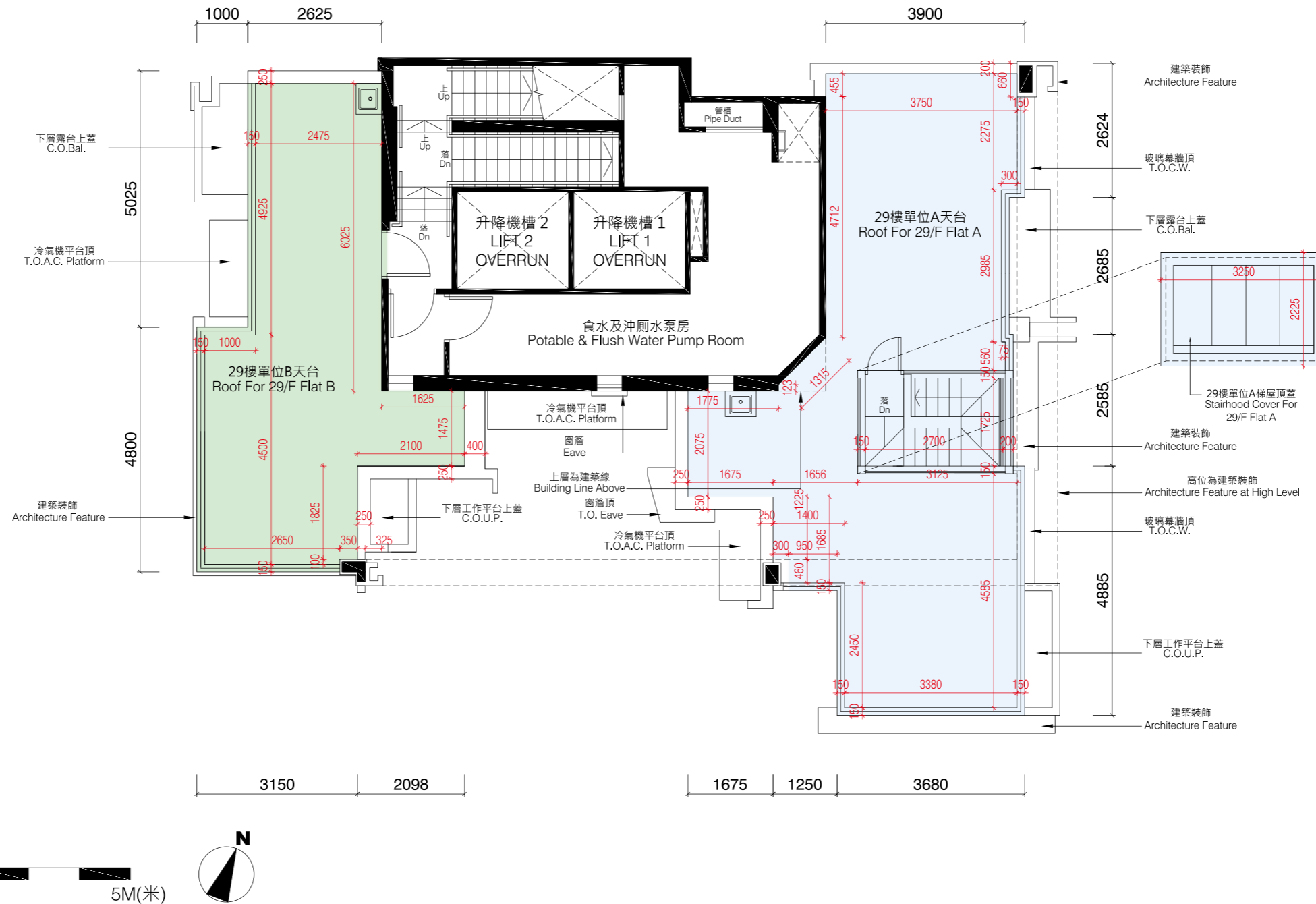
1. 以上樓面平面圖中顯示之名詞及簡稱之圖例及其適用的備註，請參閱本售樓說明書第17頁之說明。
2. 樓面平面圖所列之尺寸數字為以毫米標示的建築結構尺寸。

# 1 FLOOR PLANS OF RESIDENTIAL PROPERTIES IN THE DEVELOPMENT

## 發展項目的住宅物業的樓面平面圖

### ROOF FLOOR PLAN

#### 天台平面圖



#### Notes:

1. Please refer to page 17 of this sales brochure for the legend of the terms and abbreviations for the floor plans and notes that are applicable thereto.
2. The dimensions of floor plans are all structural dimensions in millimetre.

#### 備註:

1. 以上樓面平面圖中顯示之名詞及簡稱之圖例及其適用的備註，請參閱本售樓說明書第17頁之說明。
2. 樓面平面圖所列之尺寸數字為以毫米標示的建築結構尺寸。