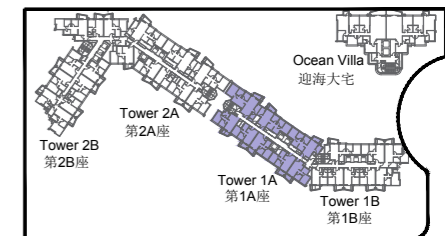


11

FLOOR PLANS OF RESIDENTIAL PROPERTIES IN THE DEVELOPMENT

發展項目的住宅物業的樓面平面圖

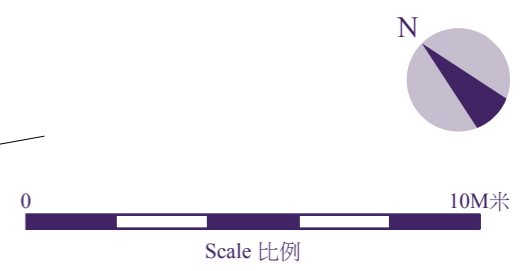
TOWER 1A
1/F
第1A座
一樓



KEY PLAN
示意圖

第1B座
Tower 1B

- Notes 附註:
- (1) The dimensions on the floor plans are all in millimetre.
樓面平面圖所列之所有尺寸均以毫米標示。
 - (2) Please refer to page 60 of this sales brochure for legend of terms and abbreviations shown on floor plans.
樓面平面圖中的名稱及簡稱請參閱本售樓說明書第60頁。



11 | FLOOR PLANS OF RESIDENTIAL PROPERTIES IN THE DEVELOPMENT

發展項目的住宅物業的樓面平面圖

The thickness of the floor slabs (excluding plaster) and floor-to-floor height of each residential property of the Development as provided in the approved building plans are:
按發展項目的經批准的建築圖則所規定，發展項目每個住宅單位的樓板(不包括灰泥)的厚度及層與層之間的高度為：

Tower 大廈	Floor 樓層	Unit 單位	Thickness of the Floor Slabs (excluding plaster) (mm) 樓板 (不包括灰泥) 的厚度 (毫米)	Floor-to-floor Height (m) 層與層之間的高度 (米)
Tower 1A 第1A座	1/F 一樓	A	150, 175, 300, 375	3.125
		B	150, 175, 300, 375	3.125
		C	150, 175, 300, 375	3.125
		D	150, 175, 300, 375	3.125
		E	150, 175, 300, 375	3.125
		F	150, 175, 300, 375	3.125
		G	150, 175, 300, 375	3.125
		H	150, 175, 300, 375	3.125

The internal areas of the residential properties on the upper floors will generally be slightly larger than those on the lower floors because of the reducing thickness of the structural walls on the upper floors.
因住宅物業的較高樓層的結構牆的厚度遞減，較高樓層的內部面積，一般比較低樓層的內部面積稍大。

11

FLOOR PLANS OF RESIDENTIAL PROPERTIES IN THE DEVELOPMENT

發展項目的住宅物業的樓面平面圖

TOWER 1A

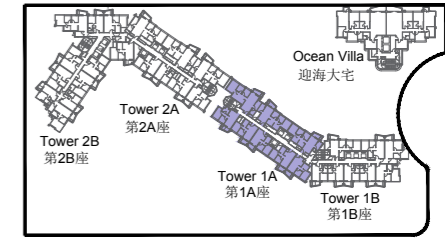
2/F to 3/F, 5/F to 12/F, 15/F to 23/F,
25/F to 33/F & 35/F

第1A座

二樓至三樓、五樓至十二樓、
十五樓至二十三樓、二十五樓
至三十三樓及三十五樓



第1B座
Tower 1B



KEY PLAN
示意圖

Notes 附註:

- (1) The dimensions on the floor plans are all in millimetre.
樓面平面圖所列之所有尺寸均以毫米標示。
- (2) Please refer to page 60 of this sales brochure for legend of terms and abbreviations shown on floor plans.
樓面平面圖中的名稱及簡稱請參閱本售樓說明書第60頁。



11 | FLOOR PLANS OF RESIDENTIAL PROPERTIES IN THE DEVELOPMENT

發展項目的住宅物業的樓面平面圖

The thickness of the floor slabs (excluding plaster) and floor-to-floor height of each residential property of the Development as provided in the approved building plans are:
按發展項目的經批准的建築圖則所規定，發展項目每個住宅單位的樓板(不包括灰泥)的厚度及層與層之間的高度為：

Tower 大廈	Floor 樓層	Unit 單位	Thickness of the Floor Slabs (excluding plaster) (mm) 樓板 (不包括灰泥) 的厚度 (毫米)	Floor-to-floor Height (m) 層與層之間的高度 (米)
Tower 1A 第1A座	2/F to 3/F, 5/F to 12/F, 15/F to 23/F, 25/F to 33/F & 35/F 二樓至三樓、 五樓至十二樓、 十五樓至二十三樓、 二十五樓至三十三樓及 三十五樓	A	150, 175, 300, 375	3.125
		B	150, 175, 300, 375	3.125
		C	150, 175, 300, 375	3.125
		D	150, 175, 300, 375	3.125
		E	150, 175, 300, 375	3.125
		F	150, 175, 300, 375	3.125
		G	150, 175, 300, 375	3.125
		H	150, 175, 300, 375	3.125

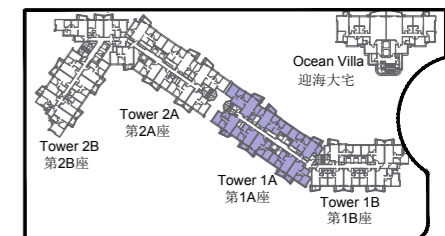
The internal areas of the residential properties on the upper floors will generally be slightly larger than those on the lower floors because of the reducing thickness of the structural walls on the upper floors.
因住宅物業的較高樓層的結構牆的厚度遞減，較高樓層的內部面積，一般比較低樓層的內部面積稍大。

11

FLOOR PLANS OF RESIDENTIAL PROPERTIES IN THE DEVELOPMENT

發展項目的住宅物業的樓面平面圖

TOWER 1A
36/F
第1A座
三十六樓



KEY PLAN
示意圖

第1B座
Tower 1B



Notes 附註:

- (1) The dimensions on the floor plans are all in millimetre.
樓面平面圖所列之所有尺寸均以毫米標示。
- (2) Please refer to page 60 of this sales brochure for legend of terms and abbreviations shown on floor plans.
樓面平面圖中的名稱及簡稱請參閱本售樓說明書第60頁。

11 | FLOOR PLANS OF RESIDENTIAL PROPERTIES IN THE DEVELOPMENT

發展項目的住宅物業的樓面平面圖

The thickness of the floor slabs (excluding plaster) and floor-to-floor height of each residential property of the Development as provided in the approved building plans are:

按發展項目的經批准的建築圖則所規定，發展項目每個住宅單位的樓板(不包括灰泥)的厚度及層與層之間的高度為：

Tower 大廈	Floor 樓層	Unit 單位	Thickness of the Floor Slabs (excluding plaster) (mm) 樓板 (不包括灰泥) 的厚度 (毫米)	Floor-to-floor Height (m) 層與層之間的高度 (米)
Tower 1A 第1A座	36/F 三十六樓	A	150, 175, 300, 375	3.300
		B	150, 175, 300, 375	3.300
		C	150, 175, 300, 375	3.300
		D	150, 175, 300, 375	3.300
		E	150, 175, 300, 375	3.300
		F	150, 175, 300, 375	3.300
		G	150, 175, 300, 375	3.300
		H	150, 175, 300, 375	3.300

The internal areas of the residential properties on the upper floors will generally be slightly larger than those on the lower floors because of the reducing thickness of the structural walls on the upper floors.

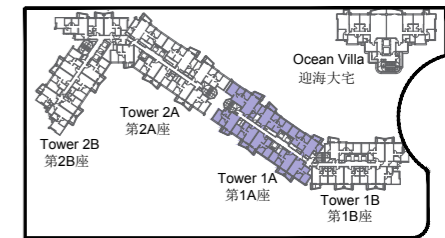
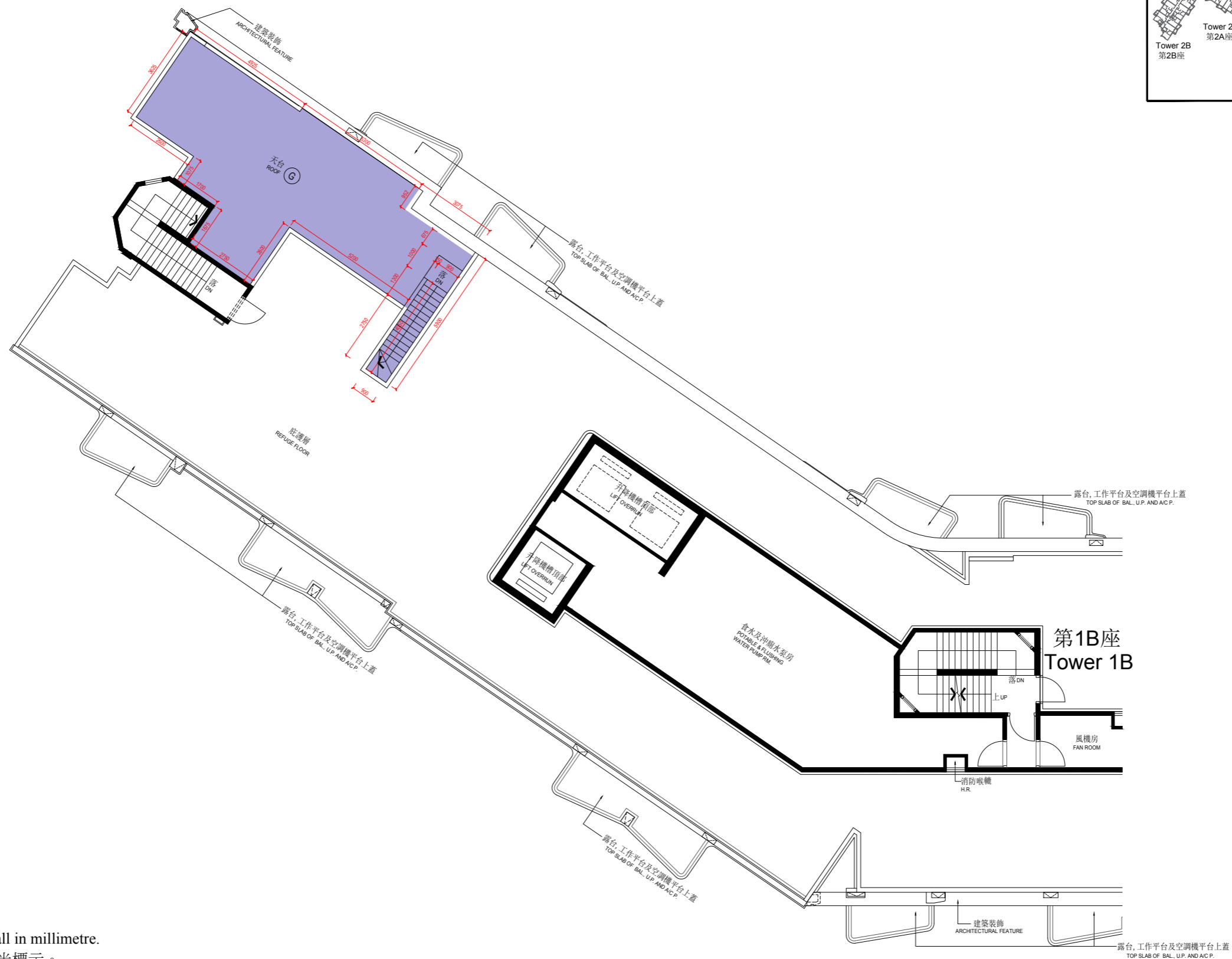
因住宅物業的較高樓層的結構牆的厚度遞減，較高樓層的內部面積，一般比較低樓層的內部面積稍大。

11

FLOOR PLANS OF RESIDENTIAL PROPERTIES IN THE DEVELOPMENT

發展項目的住宅物業的樓面平面圖

TOWER 1A
Roof
第1A座
天台



KEY PLAN
示意圖

Notes 附註:

- (1) The dimensions on the floor plans are all in millimetre.
樓面平面圖所列之所有尺寸均以毫米標示。
- (2) Please refer to page 60 of this sales brochure for legend of terms and abbreviations shown on floor plans.
樓面平面圖中的名稱及簡稱請參閱本售樓說明書第60頁。

11 | FLOOR PLANS OF RESIDENTIAL PROPERTIES IN THE DEVELOPMENT

發展項目的住宅物業的樓面平面圖

The thickness of the floor slabs (excluding plaster) and floor-to-floor height of each residential property of the Development as provided in the approved building plans are:
按發展項目的經批准的建築圖則所規定，發展項目每個住宅單位的樓板(不包括灰泥)的厚度及層與層之間的高度為：

Tower 大廈	Floor 樓層	Unit 單位	Thickness of the Floor Slabs (excluding plaster) (mm) 樓板 (不包括灰泥) 的厚度 (毫米)	Floor-to-floor Height (m) 層與層之間的高度 (米)
Tower 1A 第1A座	Roof 天台	G	Not Applicable 不適用	Not Applicable 不適用

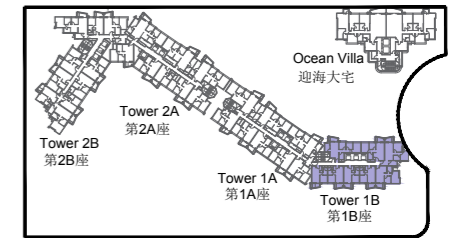
The internal areas of the residential properties on the upper floors will generally be slightly larger than those on the lower floors because of the reducing thickness of the structural walls on the upper floors.
因住宅物業的較高樓層的結構牆的厚度遞減，較高樓層的內部面積，一般比較低樓層的內部面積稍大。

11

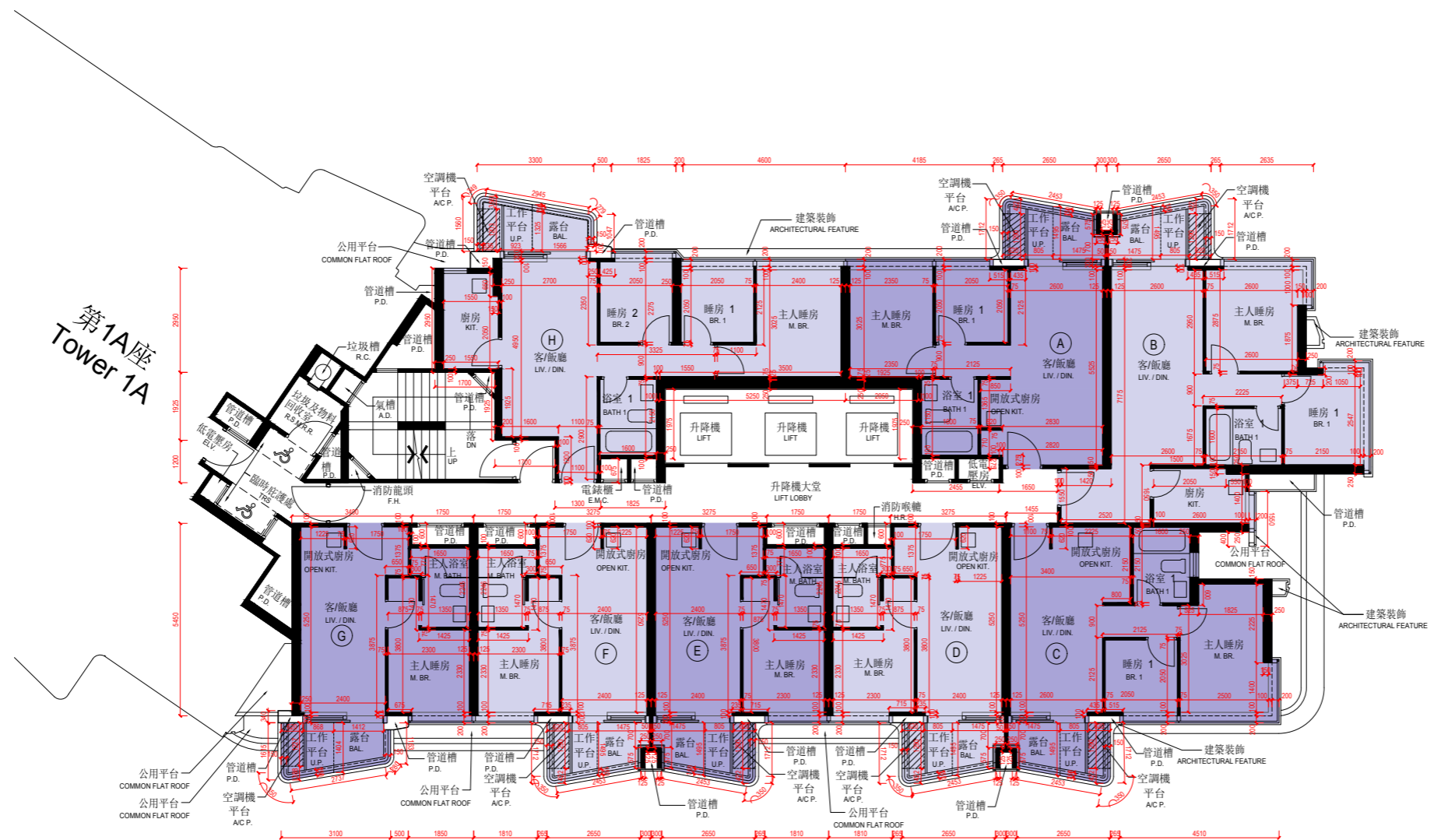
FLOOR PLANS OF RESIDENTIAL PROPERTIES IN THE DEVELOPMENT

發展項目的住宅物業的樓面平面圖

TOWER 1B
1/F
第1B座
一樓

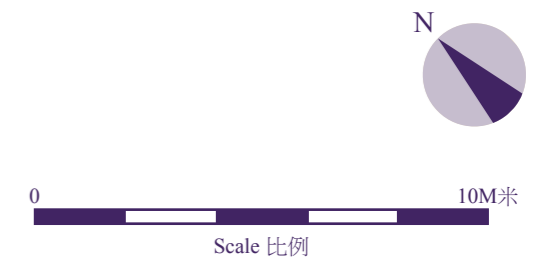


KEY PLAN
示意圖



Notes 附註:

- (1) The dimensions on the floor plans are all in millimetre.
樓面平面圖所列之所有尺寸均以毫米標示。
- (2) Please refer to page 60 of this sales brochure for legend of terms and abbreviations shown on floor plans.
樓面平面圖中的名稱及簡稱請參閱本售樓說明書第60頁。



11 | FLOOR PLANS OF RESIDENTIAL PROPERTIES IN THE DEVELOPMENT

發展項目的住宅物業的樓面平面圖

The thickness of the floor slabs (excluding plaster) and floor-to-floor height of each residential property of the Development as provided in the approved building plans are:

按發展項目的經批准的建築圖則所規定，發展項目每個住宅單位的樓板(不包括灰泥)的厚度及層與層之間的高度為：

Tower 大廈	Floor 樓層	Unit 單位	Thickness of the Floor Slabs (excluding plaster) (mm) 樓板 (不包括灰泥) 的厚度 (毫米)	Floor-to-floor Height (m) 層與層之間的高度 (米)
Tower 1B 第1B座	1/F 一樓	A	150, 175, 300, 375	3.125
		B	150, 175, 300, 375	3.125
		C	150, 175, 300, 375	3.125
		D	150, 175, 300, 375	3.125
		E	150, 175, 300, 375	3.125
		F	150, 175, 300, 375	3.125
		G	150, 175, 300, 375	3.125
		H	150, 300, 375	3.125

The internal areas of the residential properties on the upper floors will generally be slightly larger than those on the lower floors because of the reducing thickness of the structural walls on the upper floors.

因住宅物業的較高樓層的結構牆的厚度遞減，較高樓層的內部面積，一般比較低樓層的內部面積稍大。

11 | FLOOR PLANS OF RESIDENTIAL PROPERTIES IN THE DEVELOPMENT

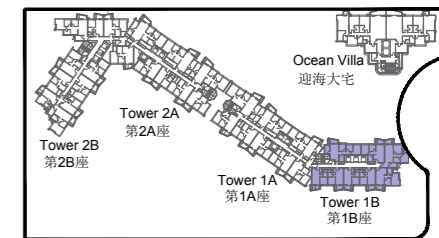
發展項目的住宅物業的樓面平面圖

TOWER 1B

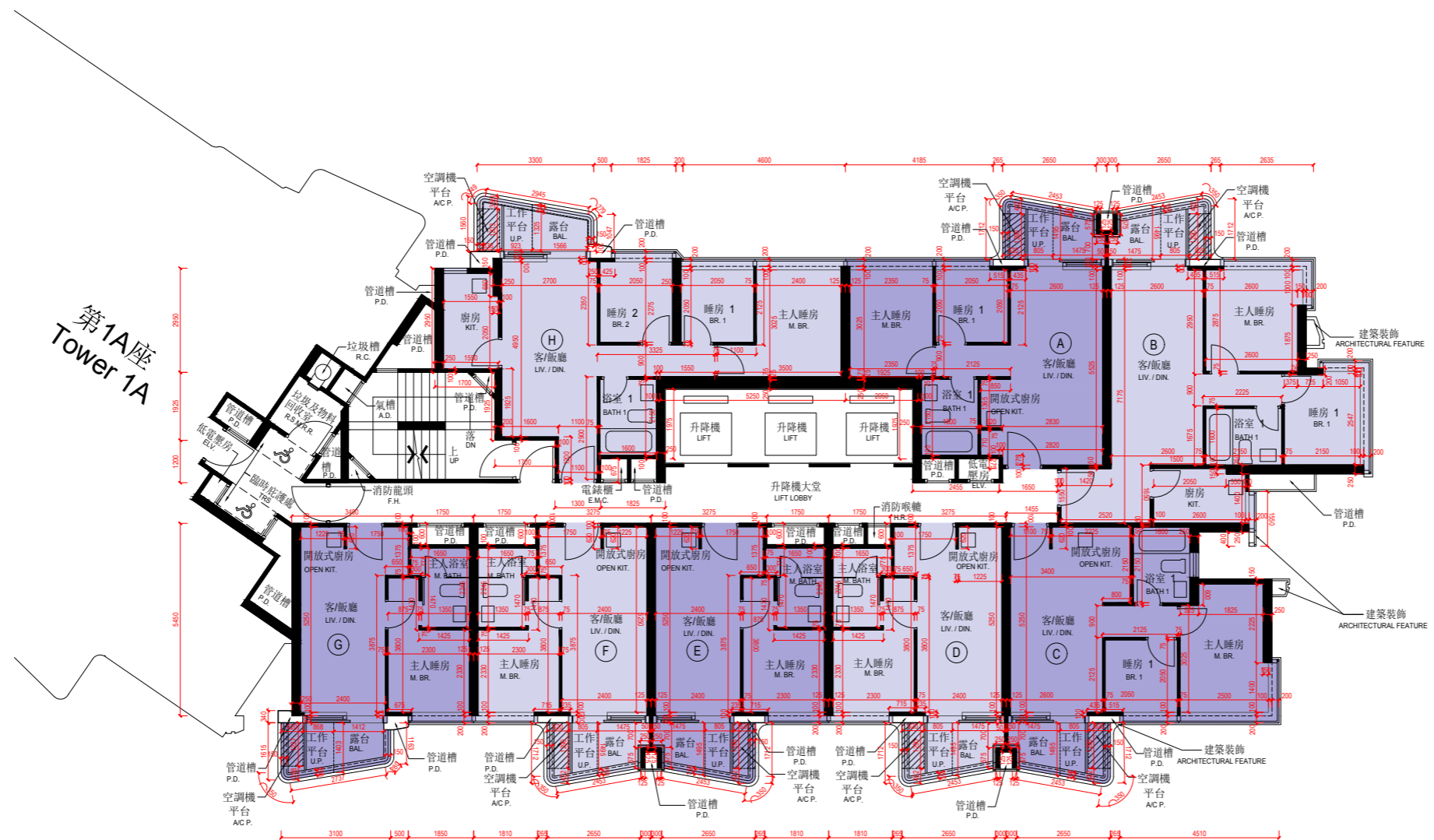
2/F to 3/F, 5/F to 12/F, 15/F to 23/F, 25/F to 33/F & 35/F

第1B座

二樓至三樓、五樓至十二樓、十五樓至二十三樓、二十五樓至三十三樓及三十五樓



KEY PLAN
示意圖



Notes 附註:

- (1) The dimensions on the floor plans are all in millimetre.
樓面平面圖所列之所有尺寸均以毫米標示。
- (2) Please refer to page 60 of this sales brochure for legend of terms and abbreviations shown on floor plans.
樓面平面圖中的名稱及簡稱請參閱本售樓說明書第60頁。



11 | FLOOR PLANS OF RESIDENTIAL PROPERTIES IN THE DEVELOPMENT

發展項目的住宅物業的樓面平面圖

The thickness of the floor slabs (excluding plaster) and floor-to-floor height of each residential property of the Development as provided in the approved building plans are:
按發展項目的經批准的建築圖則所規定，發展項目每個住宅單位的樓板(不包括灰泥)的厚度及層與層之間的高度為：

Tower 大廈	Floor 樓層	Unit 單位	Thickness of the Floor Slabs (excluding plaster) (mm) 樓板 (不包括灰泥) 的厚度 (毫米)	Floor-to-floor Height (m) 層與層之間的高度 (米)
Tower 1B 第1B座	2/F to 3/F, 5/F to 12/F, 15/F to 23/F, 25/F to 33/F & 35/F 二樓至三樓、 五樓至十二樓、 十五樓至二十三樓、 二十五樓至三十三樓及 三十五樓	A	150, 175, 300, 375	3.125
		B	150, 175, 300, 375	3.125
		C	150, 175, 300, 375	3.125
		D	150, 175, 300, 375	3.125
		E	150, 175, 300, 375	3.125
		F	150, 175, 300, 375	3.125
		G	150, 175, 300, 375	3.125
		H	150, 300, 375	3.125

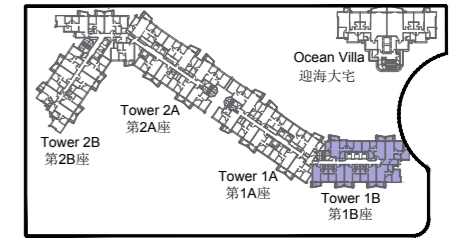
The internal areas of the residential properties on the upper floors will generally be slightly larger than those on the lower floors because of the reducing thickness of the structural walls on the upper floors.
因住宅物業的較高樓層的結構牆的厚度遞減，較高樓層的內部面積，一般比較低樓層的內部面積稍大。

11

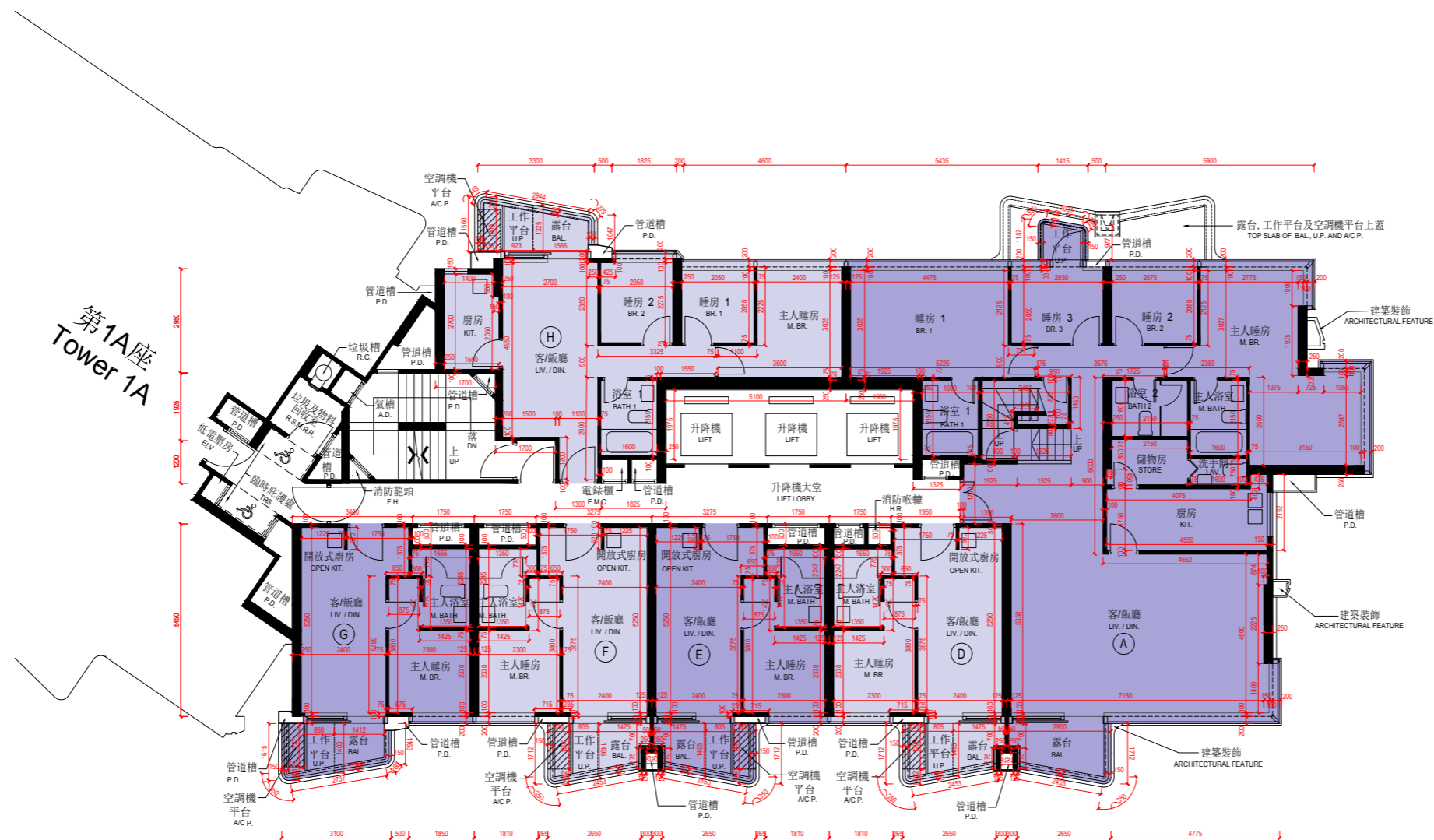
FLOOR PLANS OF RESIDENTIAL PROPERTIES IN THE DEVELOPMENT

發展項目的住宅物業的樓面平面圖

TOWER 1B
36/F
第1B座
三十六樓



KEY PLAN
示意圖



第1A座
Tower 1A

Notes 附註:

- (1) The dimensions on the floor plans are all in millimetre.
樓面平面圖所列之所有尺寸均以毫米標示。
- (2) Please refer to page 60 of this sales brochure for legend of terms and abbreviations shown on floor plans.
樓面平面圖中的名稱及簡稱請參閱本售樓說明書第60頁。



11 | FLOOR PLANS OF RESIDENTIAL PROPERTIES IN THE DEVELOPMENT

發展項目的住宅物業的樓面平面圖

The thickness of the floor slabs (excluding plaster) and floor-to-floor height of each residential property of the Development as provided in the approved building plans are:

按發展項目的經批准的建築圖則所規定，發展項目每個住宅單位的樓板(不包括灰泥)的厚度及層與層之間的高度為：

Tower 大廈	Floor 樓層	Unit 單位	Thickness of the Floor Slabs (excluding plaster) (mm) 樓板 (不包括灰泥) 的厚度 (毫米)	Floor-to-floor Height (m) 層與層之間的高度 (米)
Tower 1B 第1B座	36/F 三十六樓	A	150, 175, 200, 300, 375	3.300
		D	150, 175, 300, 375	3.300
		E	150, 175, 300, 375	3.300
		F	150, 175, 300, 375	3.300
		G	150, 175, 300, 375	3.300
		H	150, 300, 375	3.300

The internal areas of the residential properties on the upper floors will generally be slightly larger than those on the lower floors because of the reducing thickness of the structural walls on the upper floors.

因住宅物業的較高樓層的結構牆的厚度遞減，較高樓層的內部面積，一般比較低樓層的內部面積稍大。

11

FLOOR PLANS OF RESIDENTIAL PROPERTIES IN THE DEVELOPMENT

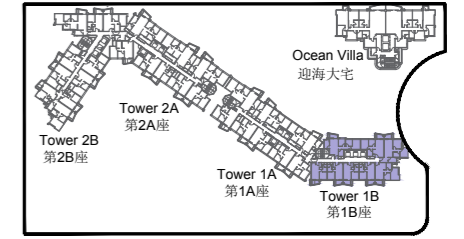
發展項目的住宅物業的樓面平面圖

TOWER 1B

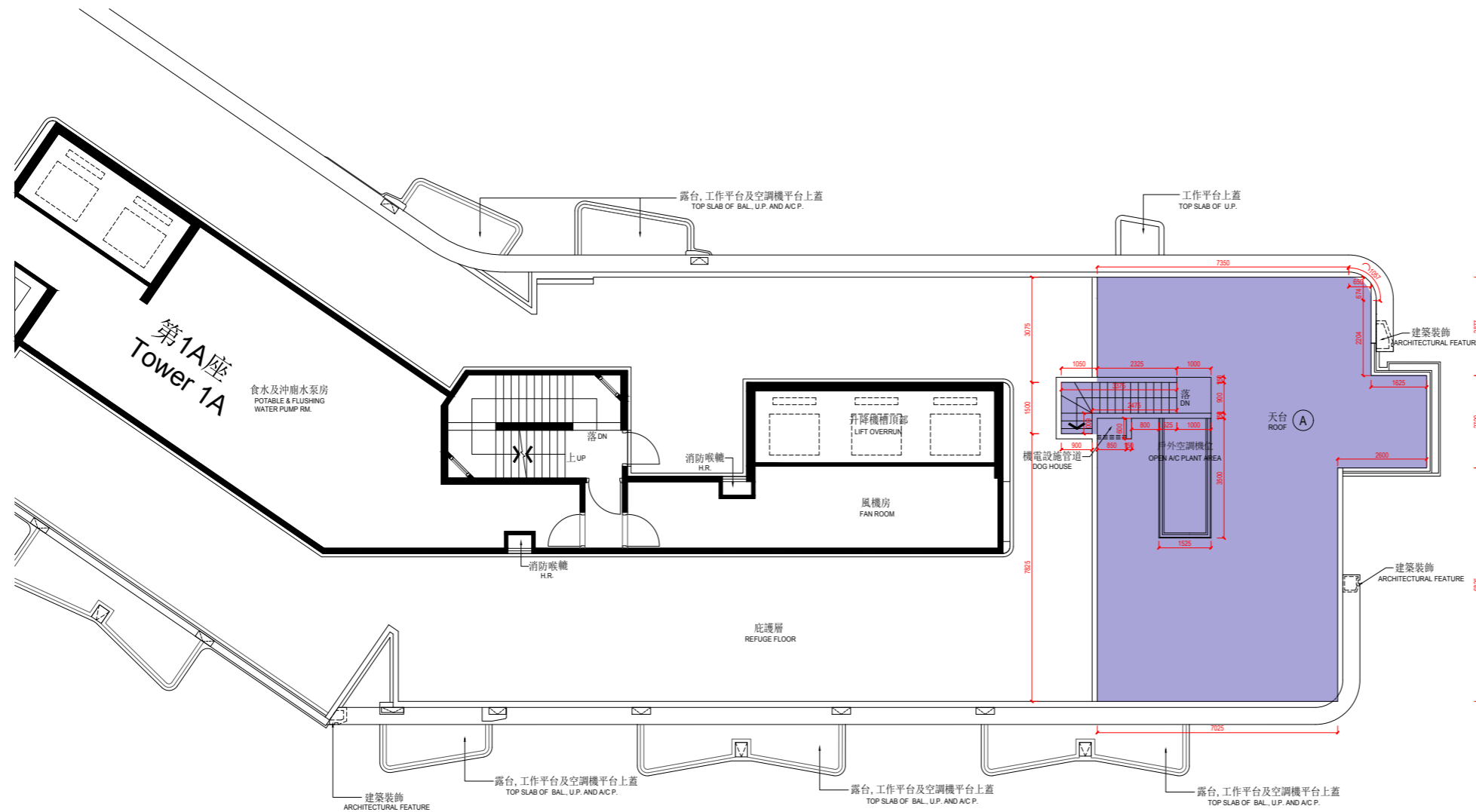
Roof

第1B座

天台



KEY PLAN
示意圖



Notes 附註:

- (1) The dimensions on the floor plans are all in millimetre.
樓面平面圖所列之所有尺寸均以毫米標示。
- (2) Please refer to page 60 of this sales brochure for legend of terms and abbreviations shown on floor plans.
樓面平面圖中的名稱及簡稱請參閱本售樓說明書第60頁。



11 | FLOOR PLANS OF RESIDENTIAL PROPERTIES IN THE DEVELOPMENT

發展項目的住宅物業的樓面平面圖

The thickness of the floor slabs (excluding plaster) and floor-to-floor height of each residential property of the Development as provided in the approved building plans are:
按發展項目的經批准的建築圖則所規定，發展項目每個住宅單位的樓板(不包括灰泥)的厚度及層與層之間的高度為：

Tower 大廈	Floor 樓層	Unit 單位	Thickness of the Floor Slabs (excluding plaster) (mm) 樓板 (不包括灰泥) 的厚度 (毫米)	Floor-to-floor Height (m) 層與層之間的高度 (米)
Tower 1B 第1B座	Roof 天台	A	Not Applicable 不適用	Not Applicable 不適用

The internal areas of the residential properties on the upper floors will generally be slightly larger than those on the lower floors because of the reducing thickness of the structural walls on the upper floors.
因住宅物業的較高樓層的結構牆的厚度遞減，較高樓層的內部面積，一般比較低樓層的內部面積稍大。

11

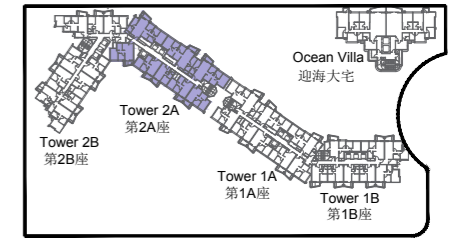
FLOOR PLANS OF RESIDENTIAL PROPERTIES IN THE DEVELOPMENT

發展項目的住宅物業的樓面平面圖

TOWER 2A
1/F
第2A座
一樓



第2B座
Tower 2B



KEY PLAN
示意圖

Notes 附註:

- (1) The dimensions on the floor plans are all in millimetre.
樓面平面圖所列之所有尺寸均以毫米標示。
- (2) Please refer to page 60 of this sales brochure for legend of terms and abbreviations shown on floor plans.
樓面平面圖中的名稱及簡稱請參閱本售樓說明書第60頁。



11 | FLOOR PLANS OF RESIDENTIAL PROPERTIES IN THE DEVELOPMENT

發展項目的住宅物業的樓面平面圖

The thickness of the floor slabs (excluding plaster) and floor-to-floor height of each residential property of the Development as provided in the approved building plans are:
按發展項目的經批准的建築圖則所規定，發展項目每個住宅單位的樓板(不包括灰泥)的厚度及層與層之間的高度為：

Tower 大廈	Floor 樓層	Unit 單位	Thickness of the Floor Slabs (excluding plaster) (mm) 樓板 (不包括灰泥) 的厚度 (毫米)	Floor-to-floor Height (m) 層與層之間的高度 (米)
Tower 2A 第2A座	1/F 一樓	A	150, 175, 300, 375	3.125
		B	150, 175, 300, 375	3.125
		C	150, 175, 300, 375	3.125
		D	150, 175, 300, 375	3.125
		E	150, 175, 300, 375	3.125
		F	150, 175, 300, 375	3.125
		G	150, 175, 300, 375	3.125
		H	150, 175, 300, 375	3.125

The internal areas of the residential properties on the upper floors will generally be slightly larger than those on the lower floors because of the reducing thickness of the structural walls on the upper floors.
因住宅物業的較高樓層的結構牆的厚度遞減，較高樓層的內部面積，一般比較低樓層的內部面積稍大。

11

FLOOR PLANS OF RESIDENTIAL PROPERTIES IN THE DEVELOPMENT

發展項目的住宅物業的樓面平面圖

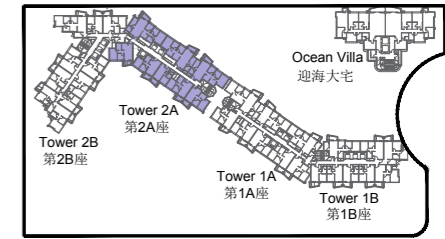
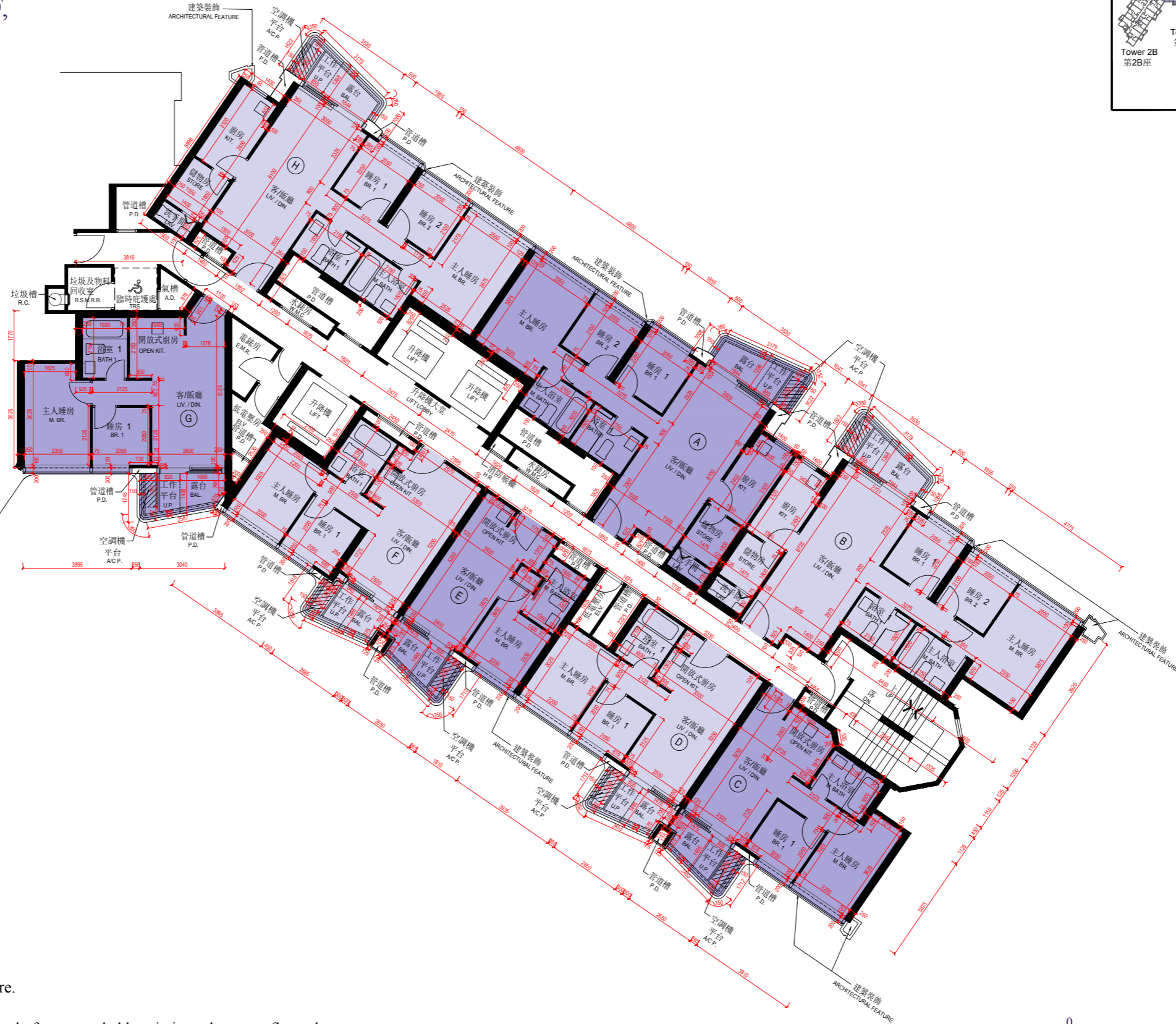
TOWER 2A

2/F to 3/F, 5/F to 12/F, 15/F to 23/F,
25/F to 33/F & 35/F

第2A座

二樓至三樓、五樓至十二樓、
十五樓至二十三樓、二十五樓
至三十三樓及三十五樓

第2B座 Tower 2B



KEY PLAN
示意圖

Notes 附註:

- (1) The dimensions on the floor plans are all in millimetre.
樓面平面圖所列之所有尺寸均以毫米標示。
- (2) Please refer to page 60 of this sales brochure for legend of terms and abbreviations shown on floor plans.
樓面平面圖中的名稱及簡稱請參閱本售樓說明書第60頁。



11 | FLOOR PLANS OF RESIDENTIAL PROPERTIES IN THE DEVELOPMENT

發展項目的住宅物業的樓面平面圖

The thickness of the floor slabs (excluding plaster) and floor-to-floor height of each residential property of the Development as provided in the approved building plans are:
按發展項目的經批准的建築圖則所規定，發展項目每個住宅單位的樓板(不包括灰泥)的厚度及層與層之間的高度為：

Tower 大廈	Floor 樓層	Unit 單位	Thickness of the Floor Slabs (excluding plaster) (mm) 樓板 (不包括灰泥) 的厚度 (毫米)	Floor-to-floor Height (m) 層與層之間的高度 (米)
Tower 2A 第2A座	2/F to 3/F, 5/F to 12/F, 15/F to 23/F, 25/F to 33/F & 35/F 二樓至三樓、 五樓至十二樓、 十五樓至二十三樓、 二十五樓至三十三樓及 三十五樓	A	150, 175, 300, 375	3.125
		B	150, 175, 300, 375	3.125
		C	150, 175, 300, 375	3.125
		D	150, 175, 300, 375	3.125
		E	150, 175, 300, 375	3.125
		F	150, 175, 300, 375	3.125
		G	150, 175, 300, 375	3.125
		H	150, 175, 300, 375	3.125

The internal areas of the residential properties on the upper floors will generally be slightly larger than those on the lower floors because of the reducing thickness of the structural walls on the upper floors.
因住宅物業的較高樓層的結構牆的厚度遞減，較高樓層的內部面積，一般比較低樓層的內部面積稍大。

11

FLOOR PLANS OF RESIDENTIAL PROPERTIES IN THE DEVELOPMENT

發展項目的住宅物業的樓面平面圖

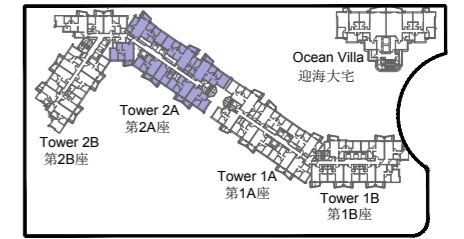
TOWER 2A

36/F

第2A座

三十六樓

第2B座
Tower 2B



KEY PLAN
示意圖



Notes 附註:

(1) The dimensions on the floor plans are all in millimetre.

樓面平面圖所列之所有尺寸均以毫米標示。

(2) Please refer to page 60 of this sales brochure for legend of terms and abbreviations shown on floor plans.

樓面平面圖中的名稱及簡稱請參閱本售樓說明書第60頁。



Scale 比例

11 | FLOOR PLANS OF RESIDENTIAL PROPERTIES IN THE DEVELOPMENT

發展項目的住宅物業的樓面平面圖

The thickness of the floor slabs (excluding plaster) and floor-to-floor height of each residential property of the Development as provided in the approved building plans are:
按發展項目的經批准的建築圖則所規定，發展項目每個住宅單位的樓板(不包括灰泥)的厚度及層與層之間的高度為：

Tower 大廈	Floor 樓層	Unit 單位	Thickness of the Floor Slabs (excluding plaster) (mm) 樓板 (不包括灰泥) 的厚度 (毫米)	Floor-to-floor Height (m) 層與層之間的高度 (米)
Tower 2A 第2A座	36/F 三十六樓	A	150, 300, 375	3.300
		B	150, 175, 300, 375	3.300
		C	150, 175, 300, 375	3.300
		D	150, 175, 300, 375	3.300
		E	150, 175, 300, 375	3.300
		F	150, 175, 300, 375	3.300
		G	150, 300, 375	3.300
		H	150, 300, 375	3.300

The internal areas of the residential properties on the upper floors will generally be slightly larger than those on the lower floors because of the reducing thickness of the structural walls on the upper floors.
因住宅物業的較高樓層的結構牆的厚度遞減，較高樓層的內部面積，一般比較低樓層的內部面積稍大。

11

FLOOR PLANS OF RESIDENTIAL PROPERTIES IN THE DEVELOPMENT

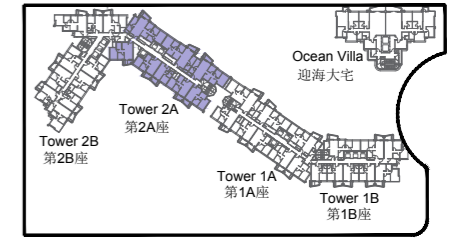
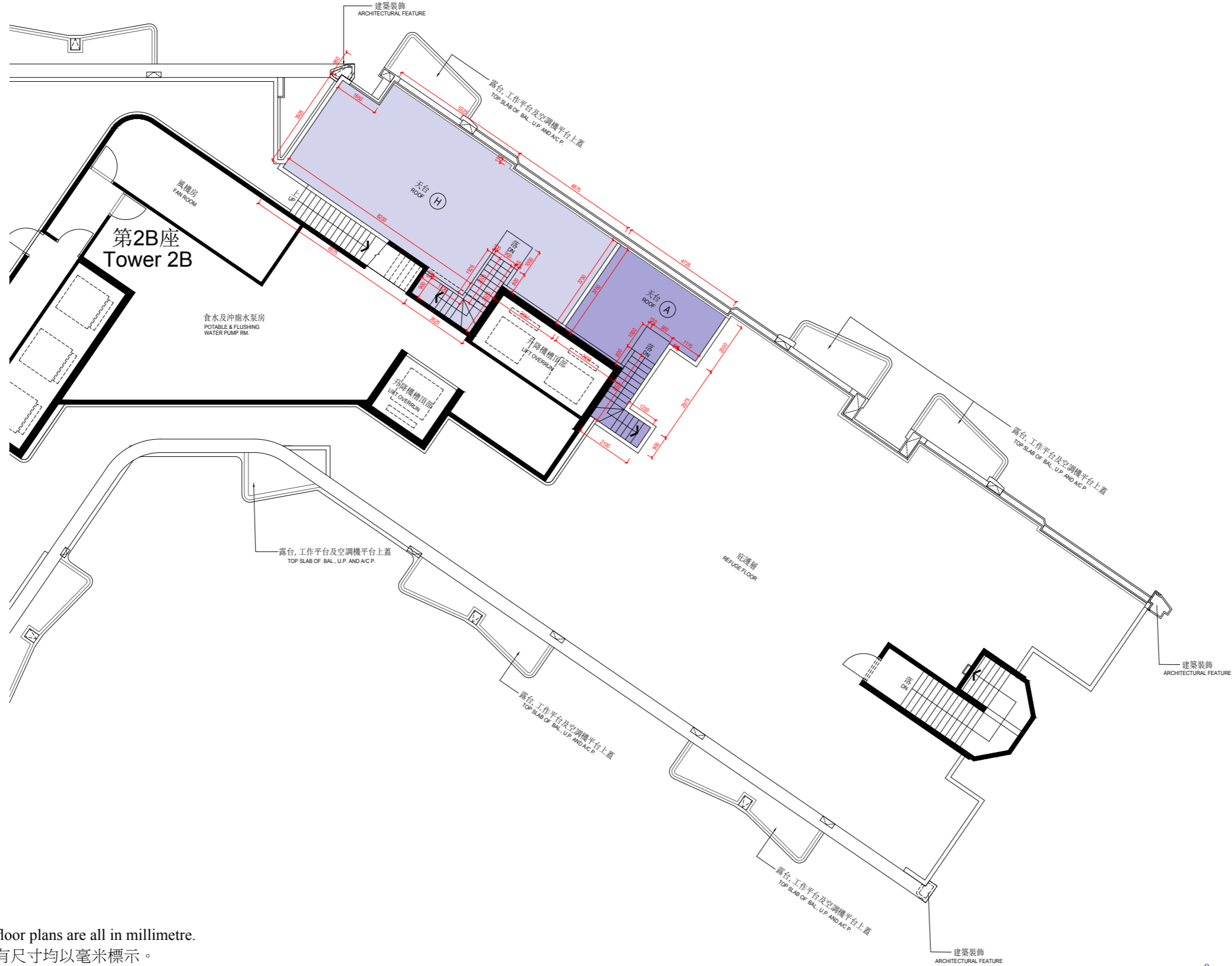
發展項目的住宅物業的樓面平面圖

TOWER 2A

Roof

第2A座

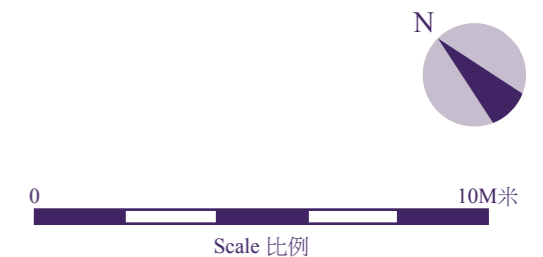
天台



KEY PLAN
示意圖

Notes 附註:

- (1) The dimensions on the floor plans are all in millimetre.
樓面平面圖所列之所有尺寸均以毫米標示。
- (2) Please refer to page 60 of this sales brochure for legend of terms and abbreviations shown on floor plans.
樓面平面圖中的名稱及簡稱請參閱本售樓說明書第60頁。



11 | FLOOR PLANS OF RESIDENTIAL PROPERTIES IN THE DEVELOPMENT

發展項目的住宅物業的樓面平面圖

The thickness of the floor slabs (excluding plaster) and floor-to-floor height of each residential property of the Development as provided in the approved building plans are:
按發展項目的經批准的建築圖則所規定，發展項目每個住宅單位的樓板(不包括灰泥)的厚度及層與層之間的高度為：

Tower 大廈	Floor 樓層	Unit 單位	Thickness of the Floor Slabs (excluding plaster) (mm) 樓板 (不包括灰泥) 的厚度 (毫米)	Floor-to-floor Height (m) 層與層之間的高度 (米)
Tower 2A 第2A座	Roof 天台	A	Not Applicable 不適用	Not Applicable 不適用
		H	Not Applicable 不適用	Not Applicable 不適用

The internal areas of the residential properties on the upper floors will generally be slightly larger than those on the lower floors because of the reducing thickness of the structural walls on the upper floors.
因住宅物業的較高樓層的結構牆的厚度遞減，較高樓層的內部面積，一般比較低樓層的內部面積稍大。

11

FLOOR PLANS OF RESIDENTIAL PROPERTIES IN THE DEVELOPMENT

發展項目的住宅物業的樓面平面圖

TOWER 2B
1/F
第2B座
一樓



Notes 附註:

- (1) The dimensions on the floor plans are all in millimetre.
樓面平面圖所列之所有尺寸均以毫米標示。
- (2) Please refer to page 60 of this sales brochure for legend of terms and abbreviations shown on floor plans.
樓面平面圖中的名稱及簡稱請參閱本售樓說明書第60頁。

11 | FLOOR PLANS OF RESIDENTIAL PROPERTIES IN THE DEVELOPMENT

發展項目的住宅物業的樓面平面圖

The thickness of the floor slabs (excluding plaster) and floor-to-floor height of each residential property of the Development as provided in the approved building plans are:
按發展項目的經批准的建築圖則所規定，發展項目每個住宅單位的樓板(不包括灰泥)的厚度及層與層之間的高度為：

Tower 大廈	Floor 樓層	Unit 單位	Thickness of the Floor Slabs (excluding plaster) (mm) 樓板 (不包括灰泥) 的厚度 (毫米)	Floor-to-floor Height (m) 層與層之間的高度 (米)
Tower 2B 第2B座	1/F 一樓	A	150, 175, 300, 375	3.125
		B	150, 175, 300, 375	3.125
		C	150, 175, 300, 375	3.125
		D	150, 175, 300, 375	3.125
		E	150, 175, 300, 375	3.125
		F	150, 175, 300, 375	3.125
		G	150, 300, 375	3.125
		H	150, 175, 300, 375	3.125
		J	150, 175, 300, 375	3.125
		K	150, 175, 300, 375	3.125

The internal areas of the residential properties on the upper floors will generally be slightly larger than those on the lower floors because of the reducing thickness of the structural walls on the upper floors.
因住宅物業的較高樓層的結構牆的厚度遞減，較高樓層的內部面積，一般比較低樓層的內部面積稍大。

11

FLOOR PLANS OF RESIDENTIAL PROPERTIES IN THE DEVELOPMENT

發展項目的住宅物業的樓面平面圖

TOWER 2B

2/F to 3/F, 5/F to 12/F,

15/F to 23/F, 25/F to 33/F & 35/F

第2B座

二樓至三樓、五樓至十二樓、
十五樓至二十三樓、二十五樓
至三十三樓及三十五樓



Notes 附註:

- (1) The dimensions on the floor plans are all in millimetre.
樓面平面圖所列之所有尺寸均以毫米標示。
- (2) Please refer to page 60 of this sales brochure for legend of terms and abbreviations shown on floor plans.
樓面平面圖中的名稱及簡稱請參閱本售樓說明書第60頁。

11 | FLOOR PLANS OF RESIDENTIAL PROPERTIES IN THE DEVELOPMENT

發展項目的住宅物業的樓面平面圖

The thickness of the floor slabs (excluding plaster) and floor-to-floor height of each residential property of the Development as provided in the approved building plans are:
按發展項目的經批准的建築圖則所規定，發展項目每個住宅單位的樓板(不包括灰泥)的厚度及層與層之間的高度為：

Tower 大廈	Floor 樓層	Unit 單位	Thickness of the Floor Slabs (excluding plaster) (mm) 樓板 (不包括灰泥) 的厚度 (毫米)	Floor-to-floor Height (m) 層與層之間的高度 (米)
Tower 2B 第2B座	2/F to 3/F, 5/F to 12/F, 15/F to 23/F, 25/F to 33/F & 35/F 二樓至三樓、 五樓至十二樓、 十五樓至二十三樓、 二十五樓至三十三樓及 三十五樓	A	150, 175, 300, 375	3.125
		B	150, 175, 300, 375	3.125
		C	150, 175, 300, 375	3.125
		D	150, 175, 300, 375	3.125
		E	150, 175, 300, 375	3.125
		F	150, 175, 300, 375	3.125
		G	150, 300, 375	3.125
		H	150, 175, 300, 375	3.125
		J	150, 175, 300, 375	3.125
		K	150, 175, 300, 375	3.125

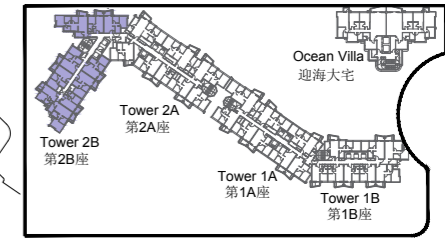
The internal areas of the residential properties on the upper floors will generally be slightly larger than those on the lower floors because of the reducing thickness of the structural walls on the upper floors.
因住宅物業的較高樓層的結構牆的厚度遞減，較高樓層的內部面積，一般比較低樓層的內部面積稍大。

11

FLOOR PLANS OF RESIDENTIAL PROPERTIES IN THE DEVELOPMENT

發展項目的住宅物業的樓面平面圖

TOWER 2B
36/F
第2B座
三十六樓



KEY PLAN
示意圖

第2A座
Tower 2A

- Notes 附註:
- (1) The dimensions on the floor plans are all in millimetre.
樓面平面圖所列之所有尺寸均以毫米標示。
 - (2) Please refer to page 60 of this sales brochure for legend of terms and abbreviations shown on floor plans.
樓面平面圖中的名稱及簡稱請參閱本售樓說明書第60頁。



11 | FLOOR PLANS OF RESIDENTIAL PROPERTIES IN THE DEVELOPMENT

發展項目的住宅物業的樓面平面圖

The thickness of the floor slabs (excluding plaster) and floor-to-floor height of each residential property of the Development as provided in the approved building plans are:
按發展項目的經批准的建築圖則所規定，發展項目每個住宅單位的樓板(不包括灰泥)的厚度及層與層之間的高度為：

Tower 大廈	Floor 樓層	Unit 單位	Thickness of the Floor Slabs (excluding plaster) (mm) 樓板 (不包括灰泥) 的厚度 (毫米)	Floor-to-floor Height (m) 層與層之間的高度 (米)
Tower 2B 第2B座	36/F 三十六樓	A	150, 175, 200, 300, 375	3.300
		C	150, 175, 300, 375	3.300
		D	150, 175, 300, 375	3.300
		E	150, 175, 300, 375	3.300
		F	150, 175, 300, 375	3.300
		J	150, 175, 300, 375	3.300
		K	150, 175, 300, 375	3.300

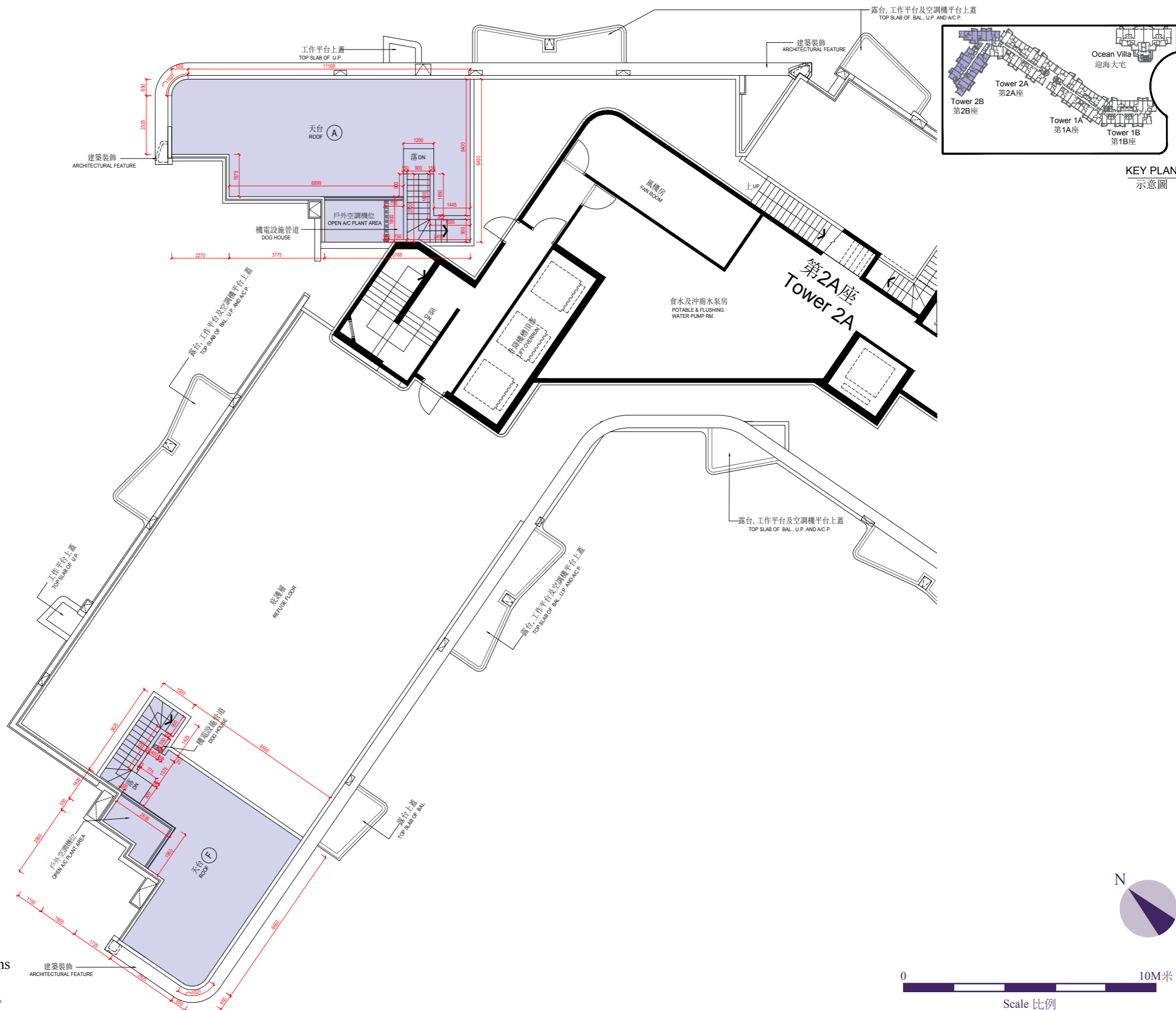
The internal areas of the residential properties on the upper floors will generally be slightly larger than those on the lower floors because of the reducing thickness of the structural walls on the upper floors.
因住宅物業的較高樓層的結構牆的厚度遞減，較高樓層的内部面積，一般比較低樓層的内部面積稍大。

11

FLOOR PLANS OF RESIDENTIAL PROPERTIES IN THE DEVELOPMENT

發展項目的住宅物業的樓面平面圖

TOWER 2B Roof 第2B座 天台



Notes 附註:

- (1) The dimensions on the floor plans are all in millimetre.
樓面平面圖所列之所有尺寸均以毫米標示。
- (2) Please refer to page 60 of this sales brochure for legend of terms and abbreviations shown on floor plans.
樓面平面圖中的名稱及簡稱請參閱本售樓說明書第60頁。

11 | FLOOR PLANS OF RESIDENTIAL PROPERTIES IN THE DEVELOPMENT

發展項目的住宅物業的樓面平面圖

The thickness of the floor slabs (excluding plaster) and floor-to-floor height of each residential property of the Development as provided in the approved building plans are:
按發展項目的經批准的建築圖則所規定，發展項目每個住宅單位的樓板(不包括灰泥)的厚度及層與層之間的高度為：

Tower 大廈	Floor 樓層	Unit 單位	Thickness of the Floor Slabs (excluding plaster) (mm) 樓板 (不包括灰泥) 的厚度 (毫米)	Floor-to-floor Height (m) 層與層之間的高度 (米)
Tower 2B 第2B座	Roof 天台	A	Not Applicable 不適用	Not Applicable 不適用
		F	Not Applicable 不適用	Not Applicable 不適用

The internal areas of the residential properties on the upper floors will generally be slightly larger than those on the lower floors because of the reducing thickness of the structural walls on the upper floors.
因住宅物業的較高樓層的結構牆的厚度遞減，較高樓層的內部面積，一般比較低樓層的內部面積稍大。

11 | FLOOR PLANS OF RESIDENTIAL PROPERTIES IN THE DEVELOPMENT

發展項目的住宅物業的樓面平面圖

The thickness of the floor slabs (excluding plaster) and floor-to-floor height of each residential property of the Development as provided in the approved building plans are:

按發展項目的經批准的建築圖則所規定，發展項目每個住宅單位的樓板(不包括灰泥)的厚度及層與層之間的高度為：

Tower 大廈	Floor 樓層	Unit 單位	Thickness of the Floor Slabs (excluding plaster) (mm) 樓板 (不包括灰泥) 的厚度 (毫米)	Floor-to-floor Height (m) 層與層之間的高度 (米)
Ocean Villa 迎海大宅	1/F 一樓	A	150, 200	3.500
		B	150, 200	3.500

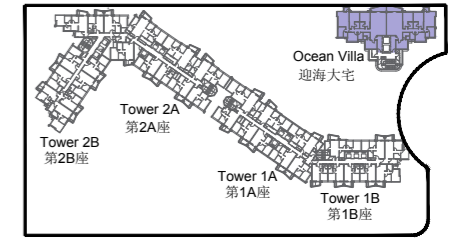
The internal areas of the residential properties on the upper floors will generally be slightly larger than those on the lower floors because of the reducing thickness of the structural walls on the upper floors.

因住宅物業的較高樓層的結構牆的厚度遞減，較高樓層的內部面積，一般比較低樓層的內部面積稍大。

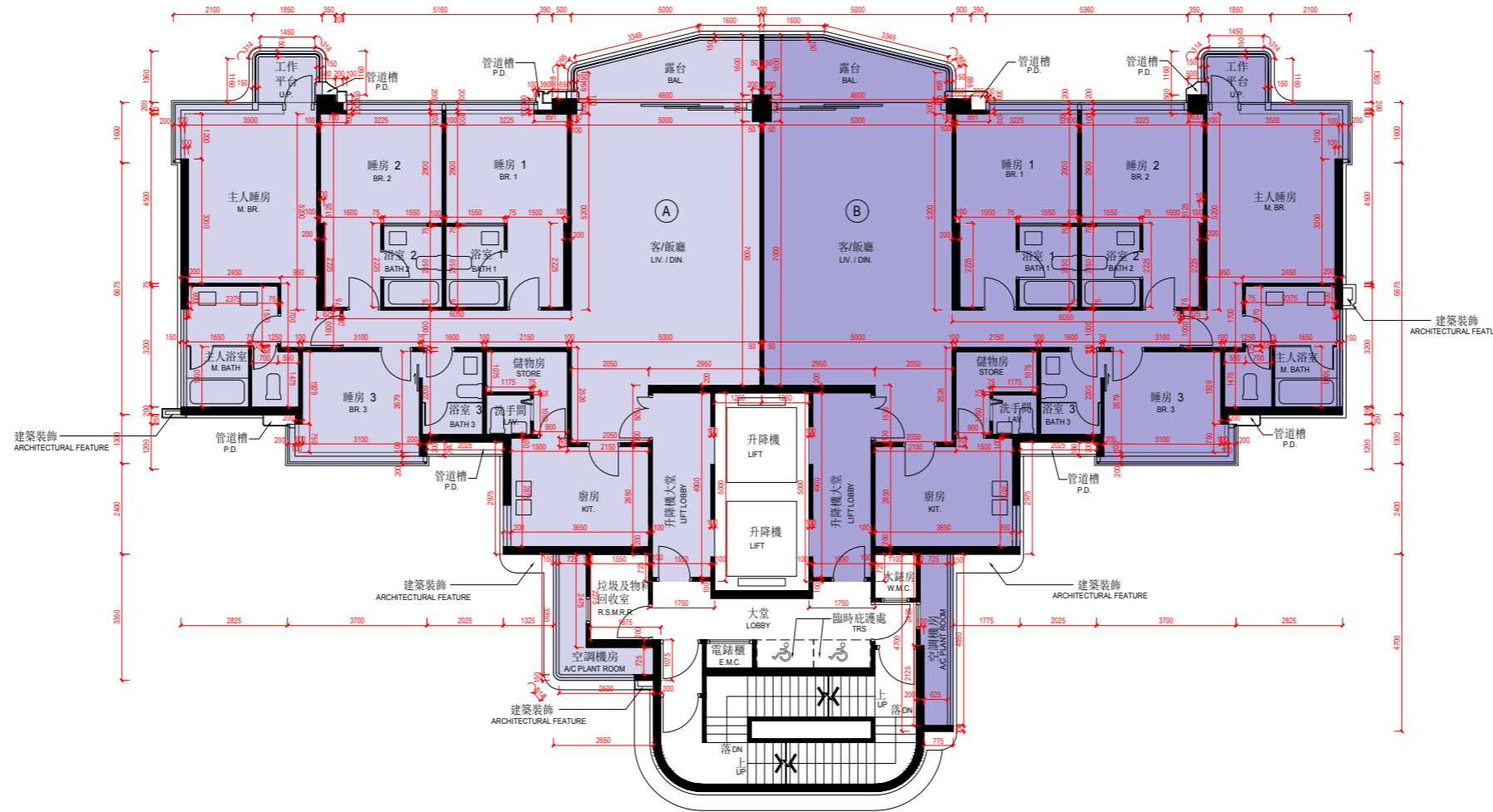
11 | FLOOR PLANS OF RESIDENTIAL PROPERTIES IN THE DEVELOPMENT

發展項目的住宅物業的樓面平面圖

Ocean Villa
2/F to 3/F & 5/F
迎海大宅
二樓至三樓及五樓



KEY PLAN
示意圖



Notes 附註:

- (1) The dimensions on the floor plans are all in millimetre.
樓面平面圖所列之所有尺寸均以毫米標示。
- (2) Please refer to page 60 of this sales brochure for legend of terms and abbreviations shown on floor plans.
樓面平面圖中的名稱及簡稱請參閱本售樓說明書第60頁。



11 | FLOOR PLANS OF RESIDENTIAL PROPERTIES IN THE DEVELOPMENT

發展項目的住宅物業的樓面平面圖

The thickness of the floor slabs (excluding plaster) and floor-to-floor height of each residential property of the Development as provided in the approved building plans are:

按發展項目的經批准的建築圖則所規定，發展項目每個住宅單位的樓板(不包括灰泥)的厚度及層與層之間的高度為：

Tower 大廈	Floor 樓層	Unit 單位	Thickness of the Floor Slabs (excluding plaster) (mm) 樓板 (不包括灰泥) 的厚度 (毫米)	Floor-to-floor Height (m) 層與層之間的高度 (米)
Ocean Villa 迎海大宅	2/F to 3/F & 5/F 二樓至三樓及五樓	A	150, 200	3.500
		B	150, 200	3.500

The internal areas of the residential properties on the upper floors will generally be slightly larger than those on the lower floors because of the reducing thickness of the structural walls on the upper floors.

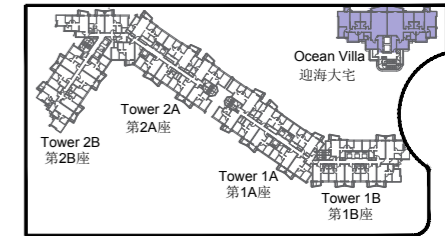
因住宅物業的較高樓層的結構牆的厚度遞減，較高樓層的內部面積，一般比較低樓層的內部面積稍大。

11

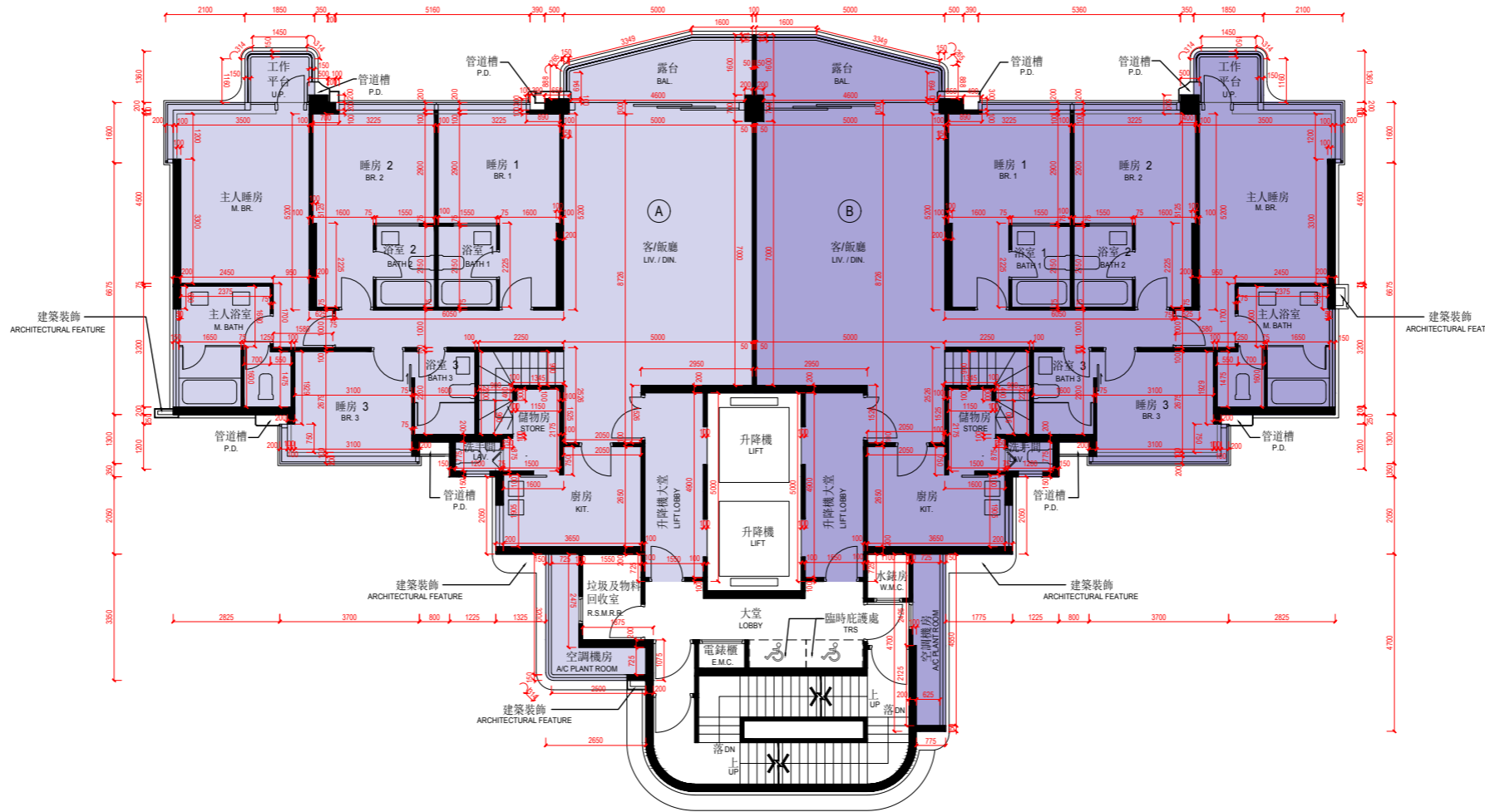
FLOOR PLANS OF RESIDENTIAL PROPERTIES IN THE DEVELOPMENT

發展項目的住宅物業的樓面平面圖

Ocean Villa
6/F
迎海大宅
六樓



KEY PLAN
示意圖



Notes 附註:

- (1) The dimensions on the floor plans are all in millimetre.
樓面平面圖所列之所有尺寸均以毫米標示。
- (2) Please refer to page 60 of this sales brochure for legend of terms and abbreviations shown on floor plans.
樓面平面圖中的名稱及簡稱請參閱本售樓說明書第60頁。



11 | FLOOR PLANS OF RESIDENTIAL PROPERTIES IN THE DEVELOPMENT

發展項目的住宅物業的樓面平面圖

The thickness of the floor slabs (excluding plaster) and floor-to-floor height of each residential property of the Development as provided in the approved building plans are:

按發展項目的經批准的建築圖則所規定，發展項目每個住宅單位的樓板(不包括灰泥)的厚度及層與層之間的高度為：

Tower 大廈	Floor 樓層	Unit 單位	Thickness of the Floor Slabs (excluding plaster) (mm) 樓板 (不包括灰泥) 的厚度 (毫米)	Floor-to-floor Height (m) 層與層之間的高度 (米)
Ocean Villa 迎海大宅	6/F 六樓	A	150, 200	3.500
		B	150, 200	3.500

The internal areas of the residential properties on the upper floors will generally be slightly larger than those on the lower floors because of the reducing thickness of the structural walls on the upper floors.

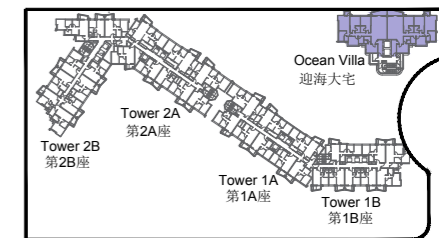
因住宅物業的較高樓層的結構牆的厚度遞減，較高樓層的內部面積，一般比較低樓層的內部面積稍大。

11

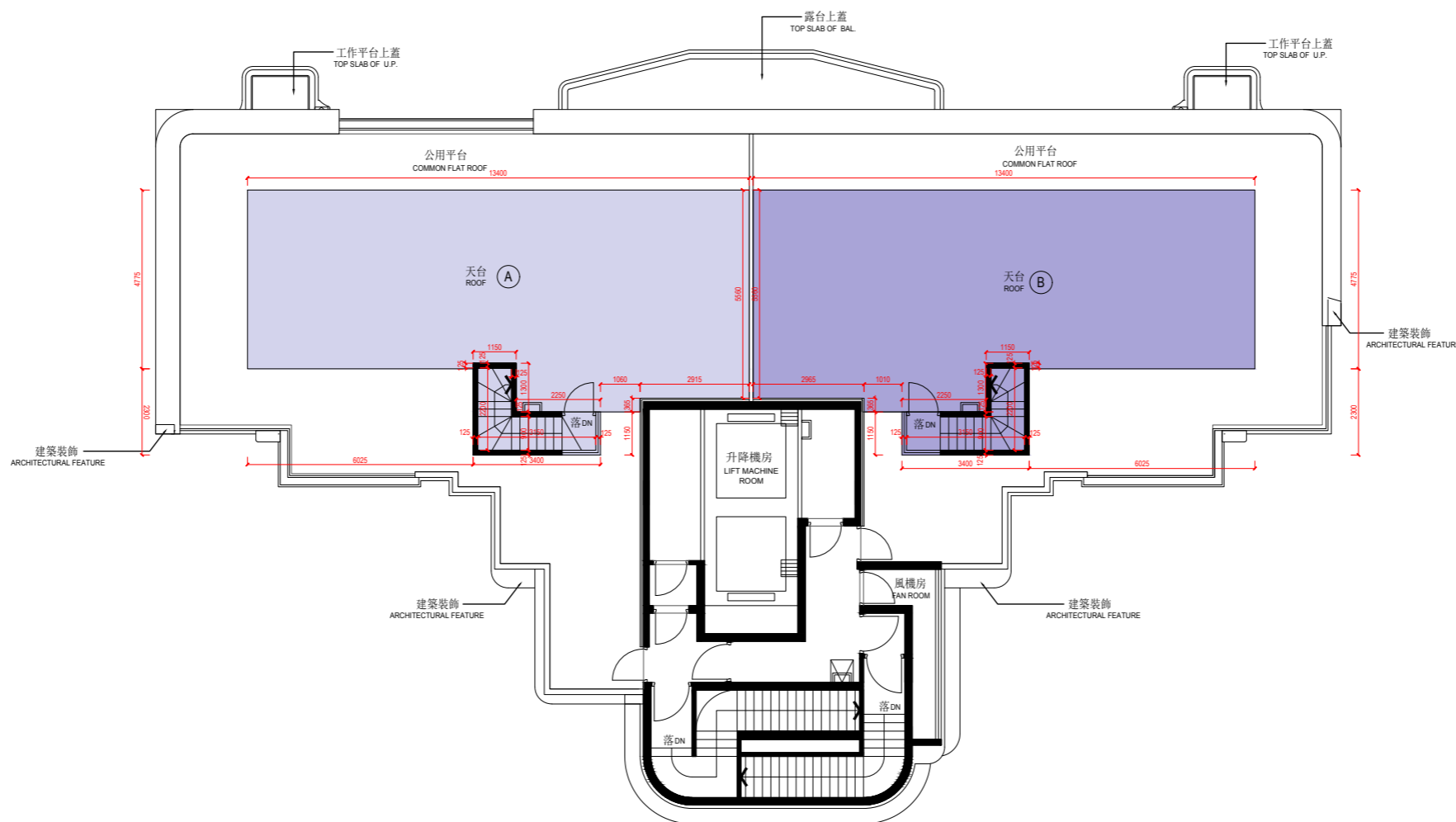
FLOOR PLANS OF RESIDENTIAL PROPERTIES IN THE DEVELOPMENT

發展項目的住宅物業的樓面平面圖

Ocean Villa
Roof
迎海大宅
天台



KEY PLAN
示意圖



Notes 附註:

- (1) The dimensions on the floor plans are all in millimetre.
樓面平面圖所列之所有尺寸均以毫米標示。
- (2) Please refer to page 60 of this sales brochure for legend of terms and abbreviations shown on floor plans.
樓面平面圖中的名稱及簡稱請參閱本售樓說明書第60頁。



11 | FLOOR PLANS OF RESIDENTIAL PROPERTIES IN THE DEVELOPMENT

發展項目的住宅物業的樓面平面圖

The thickness of the floor slabs (excluding plaster) and floor-to-floor height of each residential property of the Development as provided in the approved building plans are:

按發展項目的經批准的建築圖則所規定，發展項目每個住宅單位的樓板(不包括灰泥)的厚度及層與層之間的高度為：

Tower 大廈	Floor 樓層	Unit 單位	Thickness of the Floor Slabs (excluding plaster) (mm) 樓板 (不包括灰泥) 的厚度 (毫米)	Floor-to-floor Height (m) 層與層之間的高度 (米)
Ocean Villa 迎海大宅	Roof 天台	A	Not Applicable 不適用	Not Applicable 不適用
		B	Not Applicable 不適用	Not Applicable 不適用

The internal areas of the residential properties on the upper floors will generally be slightly larger than those on the lower floors because of the reducing thickness of the structural walls on the upper floors.

因住宅物業的較高樓層的結構牆的厚度遞減，較高樓層的內部面積，一般比較低樓層的內部面積稍大。

Legend of Terms and Abbreviations on Floor Plans:

樓面平面圖中的名稱及簡稱：

ACCESS HATCH	通道開口	LAV. = LAVATORY	洗手間
A.D. = AIR DUCT	氣槽	LIFT	升降機
A/C PLANT ROOM = AIR-CONDITIONING PLANT ROOM	空調機房	LIFT MACHINE ROOM	升降機房
A/C P. = AIR-CONDITIONING PLATFORM	空調機平台	LIFT LOBBY	升降機大堂
ARCHITECTURAL FEATURE	建築裝飾	LIFT OVERRUN	升降機槽頂部
BAL. = BALCONY	露台	LOBBY	大堂
BATH 1 = BATHROOM 1	浴室 1	LIV. / DIN. = LIVING AND DINING ROOM	客/飯廳
BATH 2 = BATHROOM 2	浴室 2	M. BATH = MASTER BATHROOM	主人浴室
BATH 3 = BATHROOM 3	浴室 3	M. BR. = MASTER BEDROOM	主人睡房
BR. 1 = BEDROOM 1	睡房 1	OPEN KIT. = OPEN KITCHEN	開放式廚房
BR. 2 = BEDROOM 2	睡房 2	OPEN A/C PLANT AREA = OPEN AIR-CONDITIONING PLANT AREA	戶外空調機位
BR. 3 = BEDROOM 3	睡房 3	P.D. = PIPE DUCT	管道槽
CAT LADDER	豎梯	POTABLE & FLUSHING WATER PUMP RM. = POTABLE AND FLUSHING WATER PUMP ROOM	食水及沖廁水泵房
CANOPY	遮篷	R.C. = REFUSE CHUTE	垃圾槽
COMMON FLAT ROOF	公用平台	REFUGE FLOOR	庇護層
COMMON GREEN ROOF	公用綠化屋頂	ROOF	天台
DN = DOWN	落	R.S.M.R.R. = REFUSE STORAGE AND MATERIAL RECOVERY ROOM	垃圾及物料回收室
DOG HOUSE	機電設施管道	STORE = STORE ROOM	儲物房
E.M.C. = ELECTRIC METER CABINET	電錶櫃	TOP SLAB OF BAL. = TOP SLAB OF BALCONY	露台上蓋
E.M.R. = ELECTRICAL METER ROOM	電錶房	TOP SLAB OF U.P. = TOP SLAB OF UTILITY PLATFORM	工作平台上蓋
ELV. = EXTRA-LOW VOLTAGE ROOM	低電壓房	TOP SLAB OF BAL., U.P. and A/C P.= TOP SLAB OF BALCONY, UTILITY PLATFORM AND AIR CONDITIONING PLATFORM	露台, 工作平台及空調機平台上蓋
FAN ROOM	風機房	TRS = TEMPORARY REFUGE SPACE	臨時庇護處
F.H. = FIRE HYDRANT	消防龍頭	U.P. = UTILITY PLATFORM	工作平台
H.R. = HOSE REEL	消防喉轆	UP	上
KIT. = KITCHEN	廚房	W.M.C. = WATER METER CABINET	水錶房