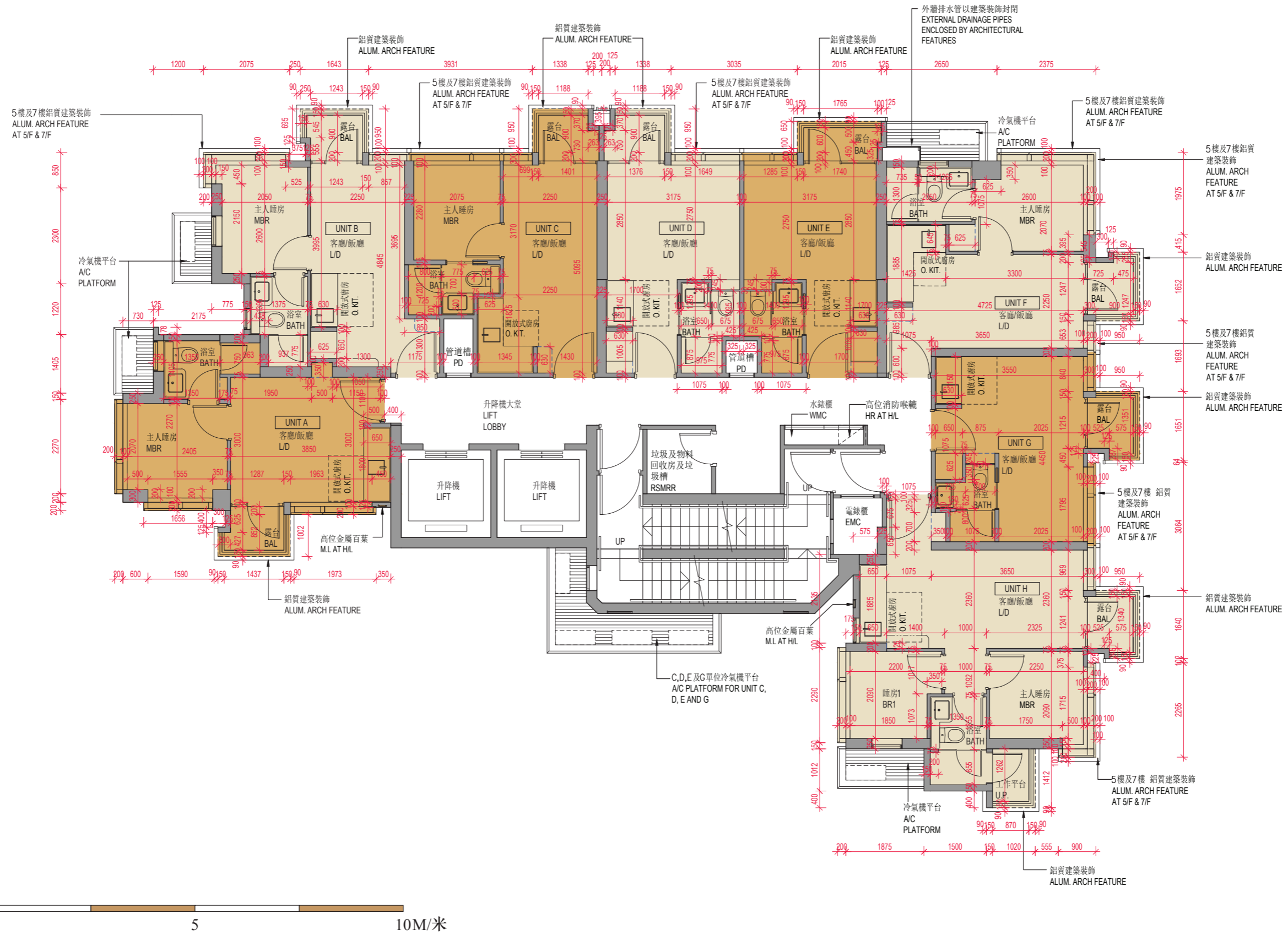


11

FLOOR PLANS OF RESIDENTIAL PROPERTIES IN THE DEVELOPMENT

發展項目的住宅物業的樓面平面圖

5/F - 7/F
5樓至7樓



Scale 比例: 0 5 10M/米

11

FLOOR PLANS OF RESIDENTIAL PROPERTIES IN THE DEVELOPMENT

發展項目的住宅物業的樓面平面圖

The internal areas of the residential properties on the upper floors will generally be slightly larger than those on the lower floors because of the reducing thickness of the structural walls on the upper floors.

因住宅物業的較高樓層的結構牆的厚度遞減，較高樓層的內部面積，一般比較低樓層的內部面積稍大。

Description of Residential Property 物業描述	Floor 樓層	Units 單位							
		A	B	C	D	E	F	G	H
The thickness of the floor slabs (excluding plaster) of each residential property (mm) 每個住宅物業的樓板(不包括灰泥)的厚度(毫米)	5/F-7/F 5樓至7樓	150							
The floor-to-floor height (refers to the height between the top surface of the structural slab of a floor and the top surface of the structural slab of its immediate upper floor) of each residential property (mm) 每個住宅物業的層與層之間的高度(指該樓層之石屎地台面與上一層石屎地台面之高度距離)(毫米)	5/F 5樓	2850, 2900, 2950, 3150	2900, 3075, 2950, 3150	2850, 2900, 2950, 3075, 3150	2850, 2950, 3075, 3150	2850, 2900, 2950, 3075, 3150	2800, 2950, 3150	2850, 2900, 2950, 3150	2800, 2850, 2950, 3075, 3150
	6/F-7/F 6樓至7樓	3150							

Notes:

- The dimensions in the floor plans are all structural dimension in millimeter.
- Please refer to page 17 of this sales brochure for legend of the terms and abbreviations shown in the floor plan above and the explanatory notes that are applicable thereto.
- There may be architectural features on external walls of some residential properties. For details, please refer to the latest approved building plans.
- The (- - - -) blue dotted line within the unit indicates the approximate location of built-in full height cabinet to be provided with the residential property.
- The (— — — —) black dash dotted line within the unit indicates the approximate location of built-in short cabinet to be provided with the residential property.

備註：

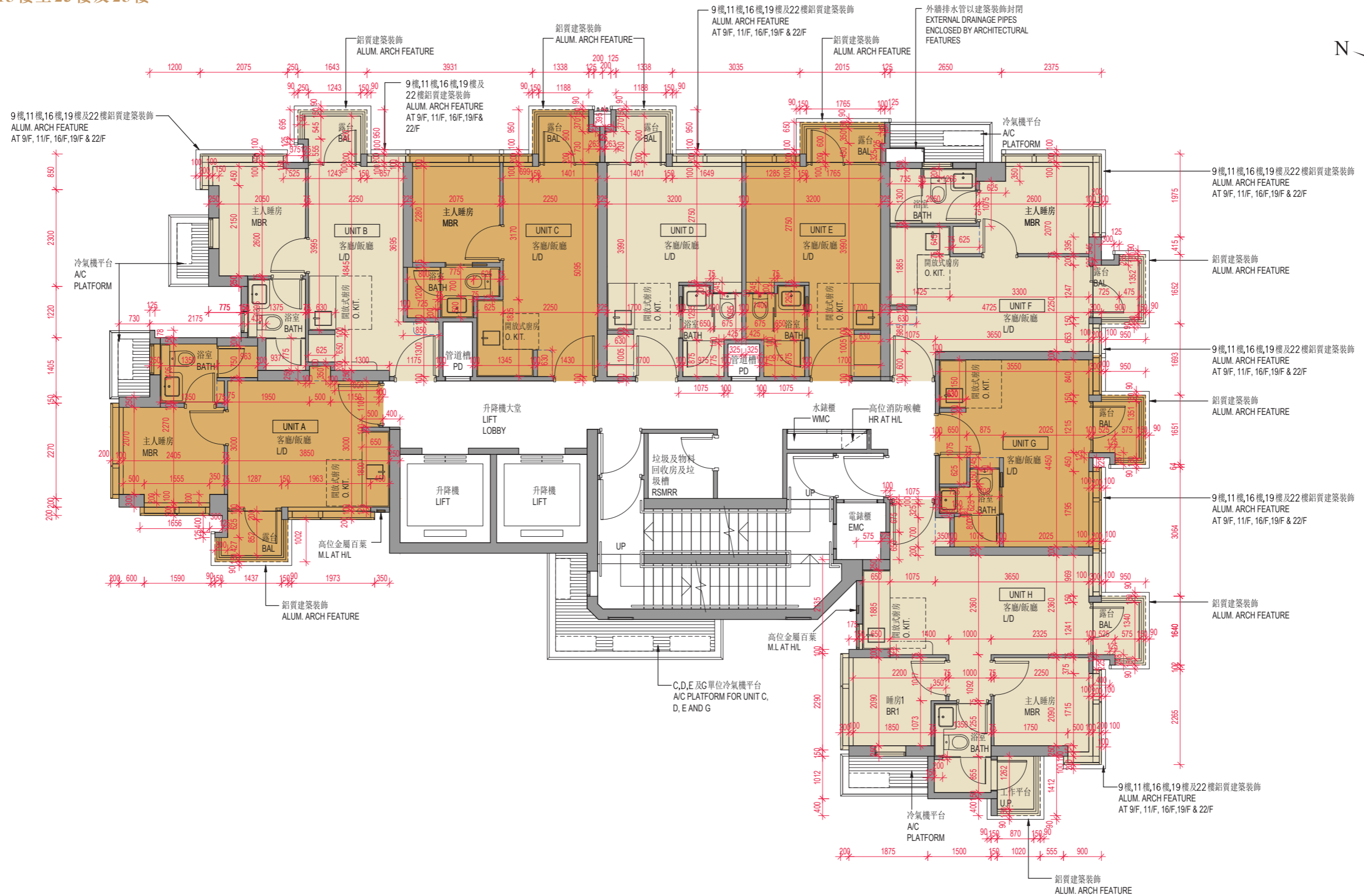
- 樓面平面圖所列之尺寸為以毫米標示之建築結構尺寸。
- 以上平面圖中顯示之名詞、簡稱及其適用的附註，請參閱本售樓說明書第17頁。
- 部分住宅物業外牆可能設有建築裝飾。詳情請參考最新批准之建築圖則。
- 單位內的(- - - -)藍色虛線顯示隨住宅物業提供的嵌入式全高櫃的大約位置。
- 單位內的(— — — —)黑色虛及點線顯示隨住宅物業提供的嵌入式矮櫃的大約位置。

11

FLOOR PLANS OF RESIDENTIAL PROPERTIES IN THE DEVELOPMENT

發展項目的住宅物業的樓面平面圖

8/F - 12/F, 15/F - 23/F & 25/F
8樓至12樓、15樓至23樓及25樓



Scale 比例: 0 5 10M/米

The internal areas of the residential properties on the upper floors will generally be slightly larger than those on the lower floors because of the reducing thickness of the structural walls on the upper floors.

因住宅物業的較高樓層的結構牆的厚度遞減，較高樓層的內部面積，一般比較低樓層的內部面積稍大。

Description of Residential Property 物業描述	Floor 樓層	Units 單位							
		A	B	C	D	E	F	G	H
The thickness of the floor slabs (excluding plaster) of each residential property (mm) 每個住宅物業的樓板(不包括灰泥)的厚度(毫米)	8/F-12/F, 15/F-23/F & 25/F 8樓至12樓、15樓至23樓及25樓	150							
The floor-to-floor height (refers to the height between the top surface of the structural slab of a floor and the top surface of the structural slab of its immediate upper floor) of each residential property (mm) 每個住宅物業的層與層之間的高度(指該樓層之石屎地台面與上一層石屎地台面之高度距離)(毫米)	8/F-12/F, 15/F-23/F 8樓至12樓、15樓至23樓	3150							
	25/F 25樓	3150				2850, 3100, 3150, 3200, 3450, 3500		2850, 3150, 3400, 3450	

Notes:

- The dimensions in the floor plans are all structural dimension in millimeter.
- Please refer to page 17 of this sales brochure for legend of the terms and abbreviations shown in the floor plan above and the explanatory notes that are applicable thereto.
- There may be architectural features on external walls of some residential properties. For details, please refer to the latest approved building plans.
- The (- - - -) blue dotted line within the unit indicates the approximate location of built-in full height cabinet to be provided with the residential property.
- The (— — — —) black dash dotted line within the unit indicates the approximate location of built-in short cabinet to be provided with the residential property.

備註：

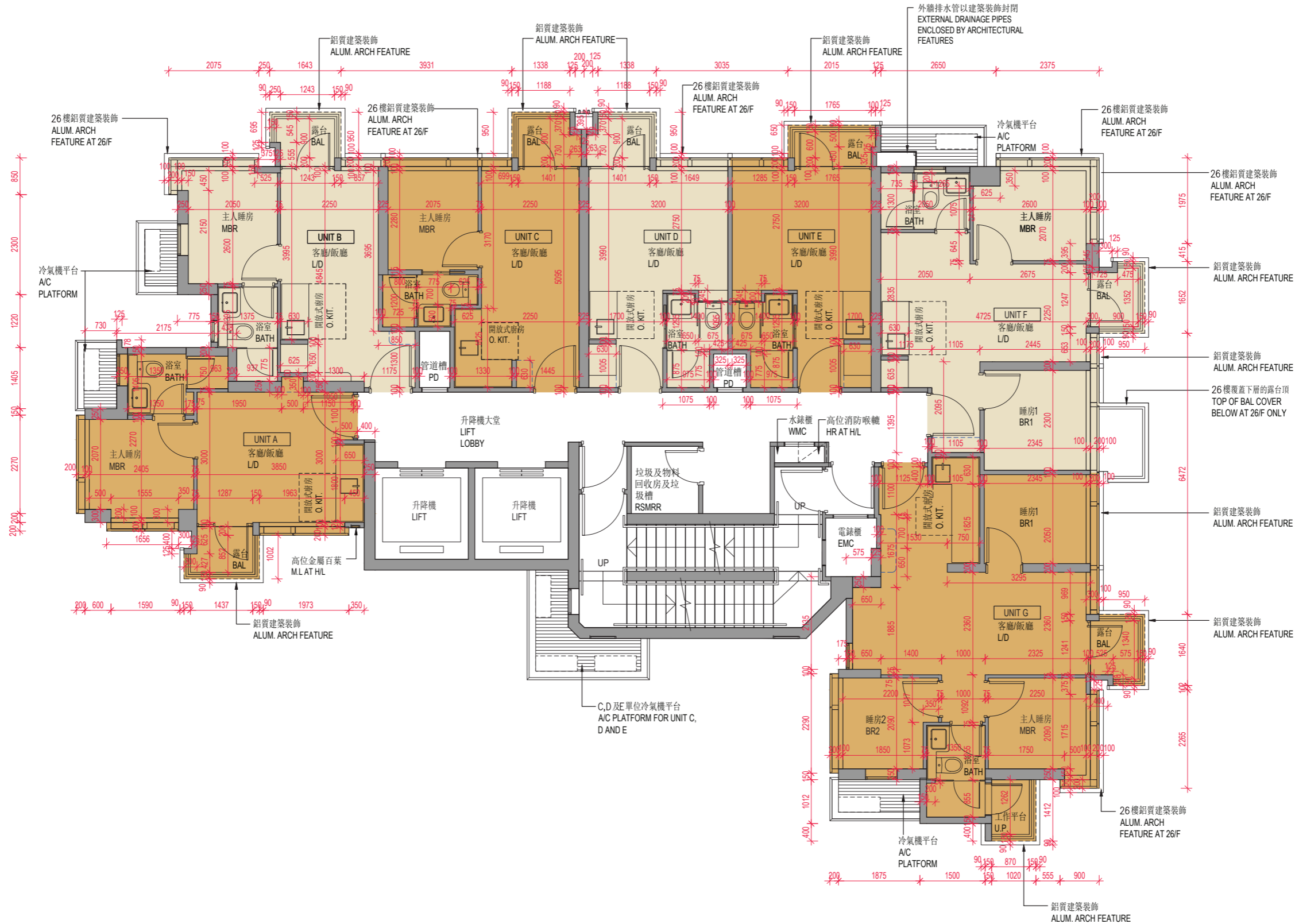
- 樓面平面圖所列之尺寸為以毫米標示之建築結構尺寸。
- 以上平面圖中顯示之名詞、簡稱及其適用的附註，請參閱本售樓說明書第17頁。
- 部分住宅物業外牆可能設有建築裝飾。詳情請參考最新批准之建築圖則。
- 單位內的(- - - -)藍色虛線顯示隨住宅物業提供的嵌入式全高櫃的大約位置。
- 單位內的(— — — —)黑色虛及點線顯示隨住宅物業提供的嵌入式矮櫃的大約位置。

11

FLOOR PLANS OF RESIDENTIAL PROPERTIES IN THE DEVELOPMENT

發展項目的住宅物業的樓面平面圖

26/F - 28/F
26樓至28樓



Scale 比例: 0 5 10M/米

11

FLOOR PLANS OF RESIDENTIAL PROPERTIES IN THE DEVELOPMENT

發展項目的住宅物業的樓面平面圖

The internal areas of the residential properties on the upper floors will generally be slightly larger than those on the lower floors because of the reducing thickness of the structural walls on the upper floors.

因住宅物業的較高樓層的結構牆的厚度遞減，較高樓層的內部面積，一般比較低樓層的內部面積稍大。

Description of Residential Property 物業描述	Floor 樓層	Units 單位						
		A	B	C	D	E	F	G
The thickness of the floor slabs (excluding plaster) of each residential property (mm) 每個住宅物業的樓板(不包括灰泥)的厚度(毫米)	26/F-28/F 26樓至28樓	150						
The floor-to-floor height (refers to the height between the top surface of the structural slab of a floor and the top surface of the structural slab of its immediate upper floor) of each residential property (mm) 每個住宅物業的層與層之間的高度(指該樓層之石屎地台面與上一層石屎地台面之高度距離)(毫米)	26/F 26樓	3150					3150, 3450	2850, 3150
	27/F 27樓	3150						
	28/F 28樓	3500, 3750, 3800	3500, 3575, 3750	3500, 3575, 3750, 3800	3500, 3575, 3800	3500, 3575, 3750, 3800	3500, 3550, 3800	3375, 3500, 3600, 3800

Notes:

- The dimensions in the floor plans are all structural dimension in millimeter.
- Please refer to page 17 of this sales brochure for legend of the terms and abbreviations shown in the floor plan above and the explanatory notes that are applicable thereto.
- There may be architectural features on external walls of some residential properties. For details, please refer to the latest approved building plans.
- The (- - - -) blue dotted line within the unit indicates the approximate location of built-in full height cabinet to be provided with the residential property.
- The (— — — —) black dash dotted line within the unit indicates the approximate location of built-in short cabinet to be provided with the residential property.

備註：

- 樓面平面圖所列之尺寸為以毫米標示之建築結構尺寸。
- 以上平面圖中顯示之名詞、簡稱及其適用的附註，請參閱本售樓說明書第17頁。
- 部分住宅物業外牆可能設有建築裝飾。詳情請參考最新批准之建築圖則。
- 單位內的(- - - -)藍色虛線顯示隨住宅物業提供的嵌入式全高櫃的大約位置。
- 單位內的(— — — —)黑色虛及點線顯示隨住宅物業提供的嵌入式矮櫃的大約位置。

MAIN ROOF 天台

