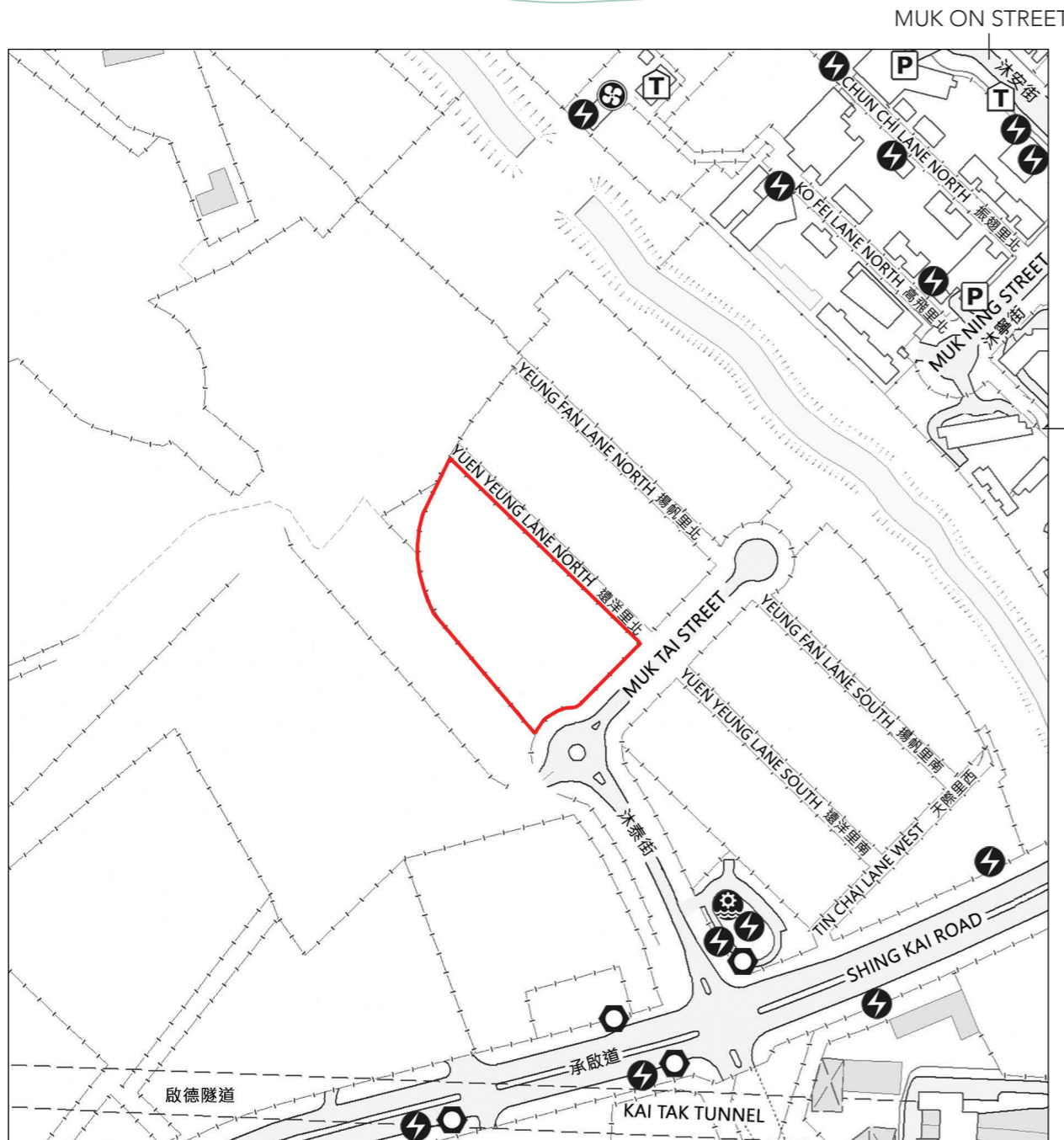


6 發展項目的所在位置圖 LOCATION PLAN OF THE DEVELOPMENT



圖例 NOTATION

- 發電廠(包括電力分站)
Power plant (including electricity sub-stations)
- 公眾停車場(包括貨車停泊處)
Public carpark (including lorry park)
- 公共交通總站(包括鐵路車站)
Public transport terminal (including rail station)
- 公用事業設施裝置
Public utility installation
- 污水處理廠及設施
Sewage treatment works and facilities
- 香港鐵路通風井
Ventilation shaft for the Mass Transit Railway

KO FEI LANE SOUTH
高飛里南

發展項目的位置
Location of the Development

此所在位置圖摘錄自地政總署測繪處之測繪圖編號 T11-NE-A and T11-NE-C，並經修正處理。
This location plan is adopted from part of the Survey Sheets of Numbers T11-NE-A and T11-NE-C, from Survey and Mapping Office of Lands Department. Adjustment is made where necessary.

地圖版權屬香港特區政府，經地政總署准許複印，版權特許編號23/2021。
The Government of the Hong Kong SAR has the copyright of the above plan. The map is reproduced with permission of the Director of Lands. © The Government of Hong Kong SAR. Licence No. 23/2021.

比例尺 Scale 0(m) 250米(m)

備註：因技術性問題，此所在位置圖所顯示的範圍超過《一手住宅物業銷售條例》的規定。

Note: Due to technical reasons, this location plan has shown more than the area required under the Residential Properties (First-hand Sales) Ordinance.