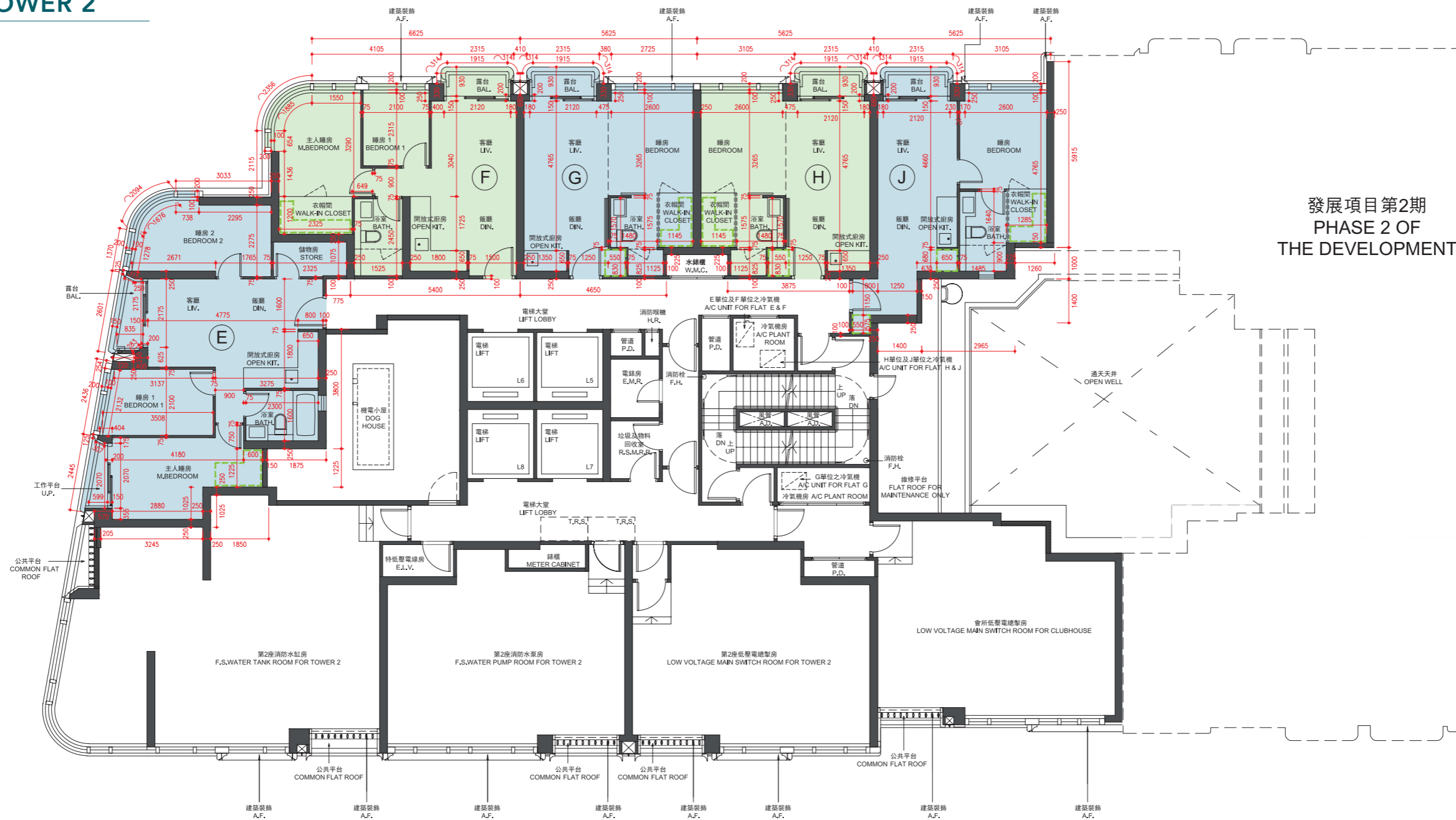


10 期數的住宅物業的樓面平面圖

FLOOR PLANS OF RESIDENTIAL PROPERTIES IN THE PHASE

第2座 TOWER 2

1樓
1/F



發展項目第2期
PHASE 2 OF
THE DEVELOPMENT

備註：平面圖所列數字為以毫米標示之建築結構尺寸。
Note: The dimensions of floor plans are all structural dimensions in millimeter.

比例尺 Scale 0米(m) 5米(m)

10 期數的住宅物業的樓面平面圖

FLOOR PLANS OF RESIDENTIAL PROPERTIES IN THE PHASE

每個住宅物業 Each Residential Property	樓層 FLOOR	第2座 TOWER 2				
		單位 FLAT				
		E	F	G	H	J
樓板(不包括灰泥)的厚度(毫米) Thickness of Floor Slab (excluding plaster) (mm)	1樓 1/F	150	150	150	150	150
層與層之間的高度(毫米) Floor-to-Floor Height (mm)		3010, 3310	3010, 3060, 3260, 3310	3010, 3060, 3260, 3310	3010, 3060, 3260, 3310	3010, 3060, 3260, 3310

因住宅物業的較高樓層的結構牆的厚度遞減，較高樓層的內部面積，一般比較低樓層的內部面積稍大。

The internal areas of the residential properties on the upper floors will generally be slightly larger than those on the lower floors because of the reducing thickness of the structural walls on the upper floors.

請參閱本售樓說明書第63頁為住宅物業的樓面平面圖而設之備註和圖例。

Please refer to page 63 of this sales brochure for the remarks and legends for the floor plans of residential properties.

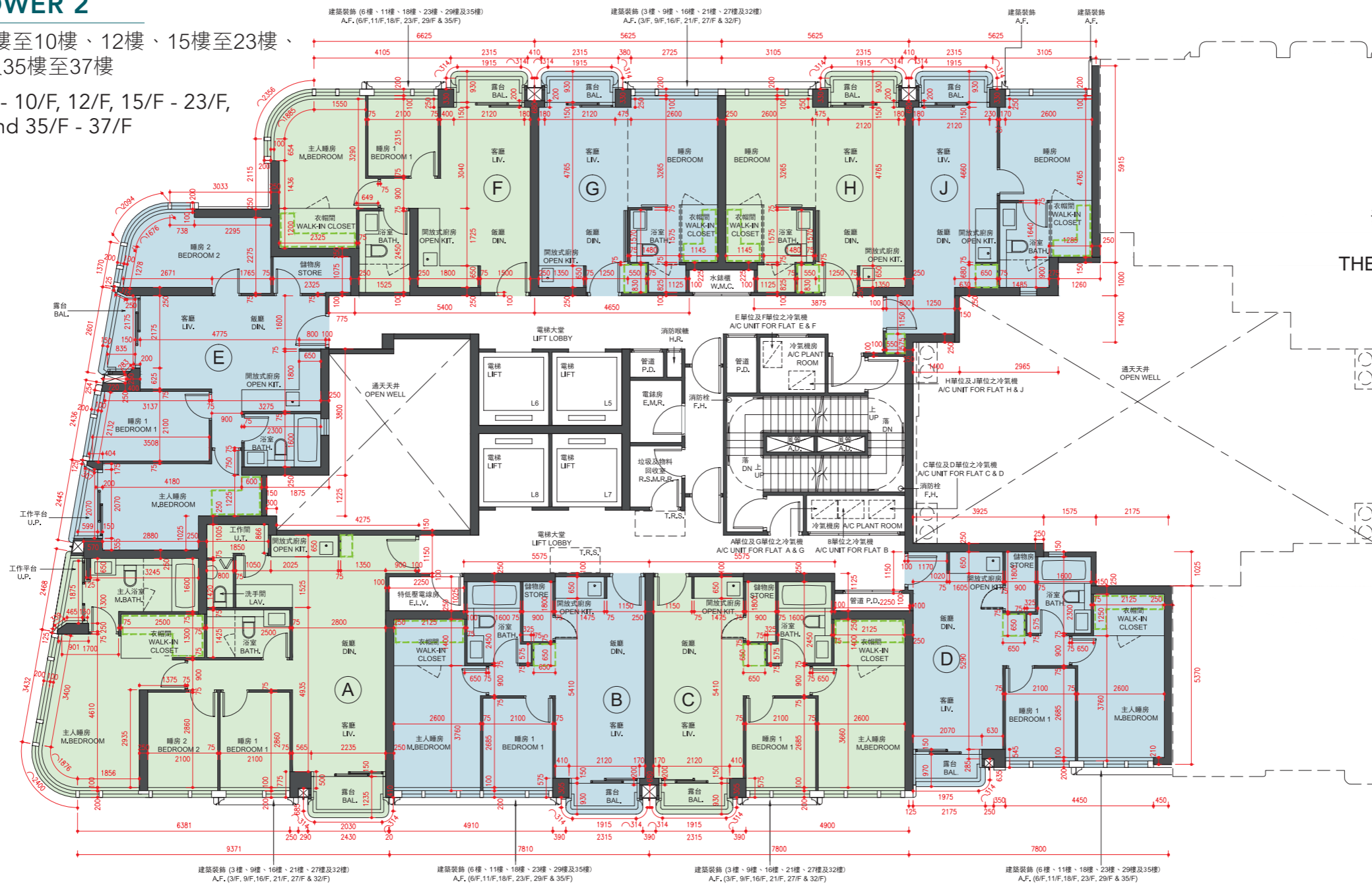
10 期數的住宅物業的樓面平面圖

FLOOR PLANS OF RESIDENTIAL PROPERTIES IN THE PHASE

第2座 TOWER 2

2樓至3樓、5樓至10樓、12樓、15樓至23樓、
25樓至33樓及35樓至37樓

2/F - 3/F, 5/F - 10/F, 12/F, 15/F - 23/F,
25/F - 33/F and 35/F - 37/F



發展項目第2期
PHASE 2 OF
THE DEVELOPMENT

備註：平面圖所列數字為以毫米標示之建築結構尺寸。
Note: The dimensions of floor plans are all structural dimensions in millimeter.

比例尺 Scale 0米(m) 5米(m)

10 期數的住宅物業的樓面平面圖

FLOOR PLANS OF RESIDENTIAL PROPERTIES IN THE PHASE

每個住宅物業 Each Residential Property	樓層 FLOOR	第2座 TOWER 2								
		單位 FLAT								
		A	B	C	D	E	F	G	H	J
樓板(不包括灰泥)的厚度(毫米) Thickness of Floor Slab (excluding plaster) (mm)	2樓至3樓、5樓至9樓、 12樓、15樓至23樓、 25樓至33樓及35樓至37樓 2/F - 3/F, 5/F - 9/F, 12/F, 15/F - 23/F, 25/F - 33/F and 35/F - 37/F	150	150	150	150	150	150	150	150	150
層與層之間的高度(毫米) Floor-to-Floor Height (mm)		3310	3310	3310	3310	3310	3310	3310	3310	3310

每個住宅物業 Each Residential Property	樓層 FLOOR	第2座 TOWER 2								
		單位 FLAT								
		A	B	C	D	E	F	G	H	J
樓板(不包括灰泥)的厚度(毫米) Thickness of Floor Slab (excluding plaster) (mm)	10樓 10/F	150	150	150	150	150	150	150	150	150
層與層之間的高度(毫米) Floor-to-Floor Height (mm)		3310	3310	3310	3310	3310	3310	3310	3310	3310

因住宅物業的較高樓層的結構牆的厚度遞減，較高樓層的內部面積，一般比較低樓層的內部面積稍大。

The internal areas of the residential properties on the upper floors will generally be slightly larger than those on the lower floors because of the reducing thickness of the structural walls on the upper floors.

請參閱本售樓說明書第63頁為住宅物業的樓面平面圖而設之備註和圖例。

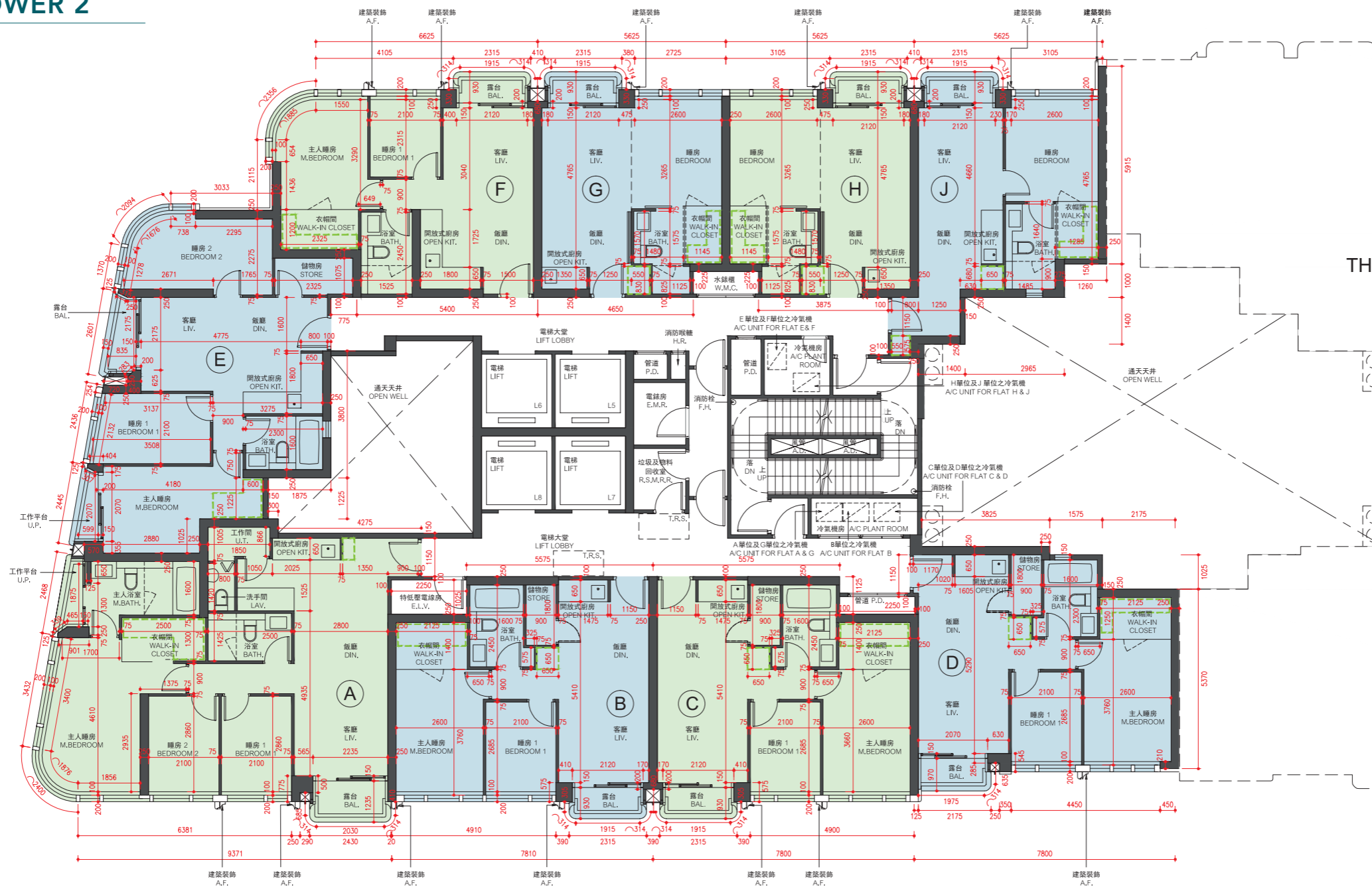
Please refer to page 63 of this sales brochure for the remarks and legends for the floor plans of residential properties.

10 期數的住宅物業的樓面平面圖

FLOOR PLANS OF RESIDENTIAL PROPERTIES IN THE PHASE

第2座 TOWER 2

38樓至39樓
38/F - 39/F



發展項目第2期
PHASE 2 OF
THE DEVELOPMENT

備註：平面圖所列數字為以毫米標示之建築結構尺寸。
Note: The dimensions of floor plans are all structural dimensions in millimeter.

比例尺 Scale 0米(m) 5米(m)

10 期數的住宅物業的樓面平面圖

FLOOR PLANS OF RESIDENTIAL PROPERTIES IN THE PHASE

每個住宅物業 Each Residential Property	樓層 FLOOR	第2座 TOWER 2								
		單位 FLAT								
		A	B	C	D	E	F	G	H	J
樓板(不包括灰泥)的厚度(毫米) Thickness of Floor Slab (excluding plaster) (mm)	38樓 38/F	150	150	150	150	150	150	150	150	150
層與層之間的高度(毫米) Floor-to-Floor Height (mm)		3310	3310	3310	3310	3310	3310	3310	3310	3310

每個住宅物業 Each Residential Property	樓層 FLOOR	第2座 TOWER 2								
		單位 FLAT								
		A	B	C	D	E	F	G	H	J
樓板(不包括灰泥)的厚度(毫米) Thickness of Floor Slab (excluding plaster) (mm)	39樓 39/F	150	150, 340*	150, 340*	150	150	150	150	150	150
層與層之間的高度(毫米) Floor-to-Floor Height (mm)		3175, 3275, 3300, 3325, 3400, 3450, 3500	3310, 3500*	3200, 3310, 3500*	3310	3500	3500	3500	3500	3500

因住宅物業的較高樓層的結構牆的厚度遞減，較高樓層的內部面積，一般比較低樓層的內部面積稍大。

The internal areas of the residential properties on the upper floors will generally be slightly larger than those on the lower floors because of the reducing thickness of the structural walls on the upper floors.

請參閱本售樓說明書第63頁為住宅物業的樓面平面圖而設之備註和圖例。

Please refer to page 63 of this sales brochure for the remarks and legends for the floor plans of residential properties.

*包括結構層上之混凝土填充層厚度(190毫米)

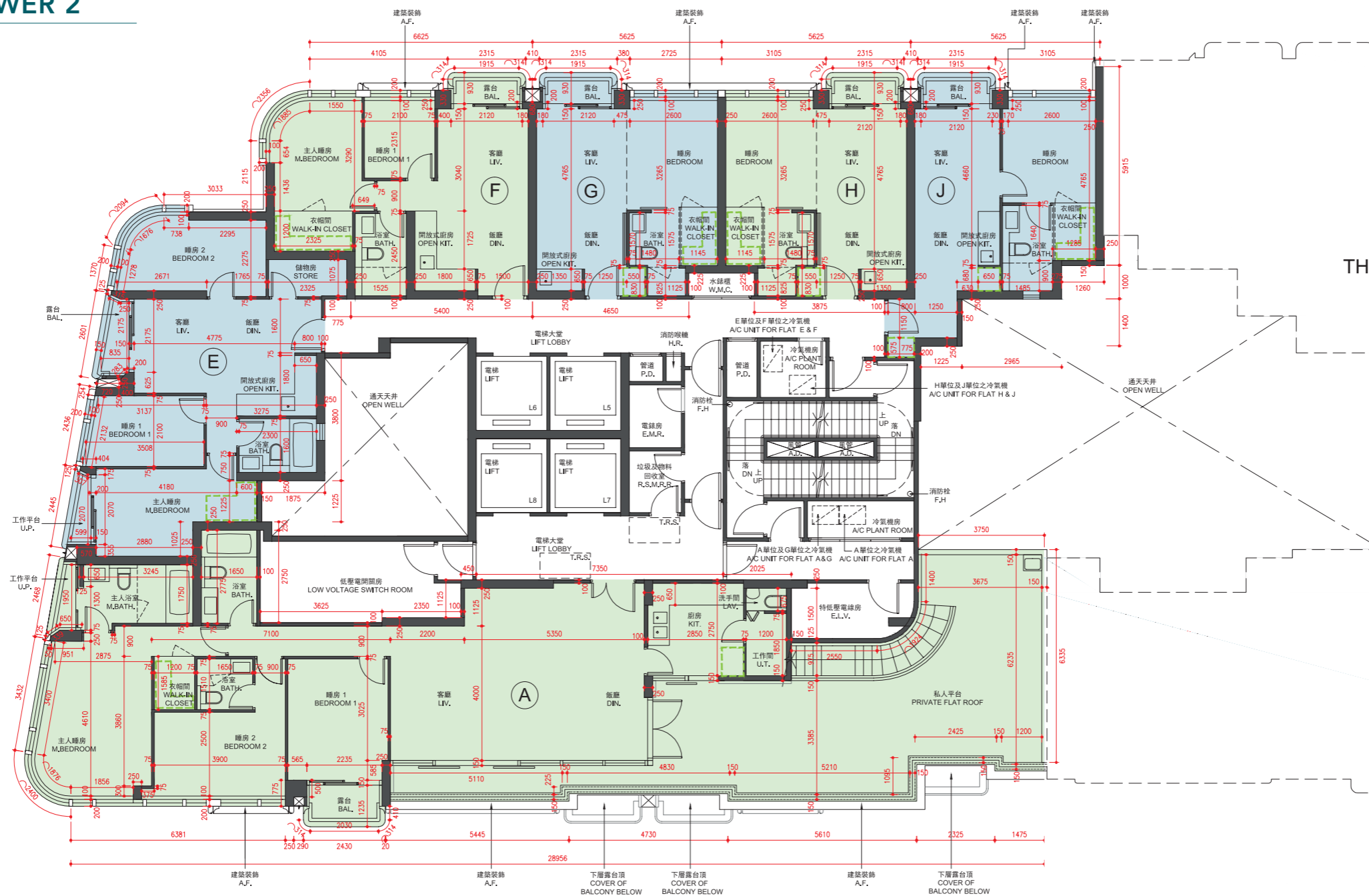
*Inclusive of the thickness of mass concrete fill on slab (190mm)

10 期數的住宅物業的樓面平面圖

FLOOR PLANS OF RESIDENTIAL PROPERTIES IN THE PHASE

第2座 TOWER 2

40樓
40/F



發展項目第2期
PHASE 2 OF
THE DEVELOPMENT

備註：平面圖所列數字為以毫米標示之建築結構尺寸。
Note: The dimensions of floor plans are all structural dimensions in millimeter.

比例尺 Scale 0米(m) 5米(m)

10 期數的住宅物業的樓面平面圖

FLOOR PLANS OF RESIDENTIAL PROPERTIES IN THE PHASE

每個住宅物業 Each Residential Property	樓層 FLOOR	第2座 TOWER 2					
		單位 FLAT					
		A	E	F	G	H	J
樓板(不包括灰泥)的厚度(毫米) Thickness of Floor Slab (excluding plaster) (mm)	40樓 40/F	150, 175, 250 [~] , 275 [~] , 475 [#]	150, 300 [^]	150, 300 [^] , 450 [#]	150, 250 [~] , 450 [#]	150, 250 [~] , 450 [#]	150, 300 [^] , 450 [#]
層與層之間的高度(毫米) Floor-to-Floor Height (mm)		3500, 3600 [~] , 3800 [#]	3500, 3650 [^]	3500, 3650 [^] , 3800 [#]	3500, 3600 [~] , 3800 [#]	3500, 3600 [~] , 3800 [#]	3500, 3650 [^] , 3800 [#]

因住宅物業的較高樓層的結構牆的厚度遞減，較高樓層的內部面積，一般比較低樓層的內部面積稍大。

The internal areas of the residential properties on the upper floors will generally be slightly larger than those on the lower floors because of the reducing thickness of the structural walls on the upper floors.

請參閱本售樓說明書第63頁為住宅物業的樓面平面圖而設之備註和圖例。

Please refer to page 63 of this sales brochure for the remarks and legends for the floor plans of residential properties.

[~]包括結構層上之混凝土填充層厚度(100毫米)

[~]Inclusive of the thickness of mass concrete fill on slab (100mm)

[^]包括結構層上之混凝土填充層厚度(150毫米)

[^]Inclusive of the thickness of mass concrete fill on slab (150mm)

[#]包括結構層上之混凝土填充層厚度(300毫米)

[#]Inclusive of the thickness of mass concrete fill on slab (300mm)

10 期數的住宅物業的樓面平面圖

FLOOR PLANS OF RESIDENTIAL PROPERTIES IN THE PHASE

每個住宅物業 Each Residential Property	樓層 FLOOR	第2座 TOWER 2			
		單位 FLAT			
		A	E	F	J
樓板(不包括灰泥)的厚度(毫米) Thickness of Floor Slab (excluding plaster) (mm)	天台 Roof	不適用 Not Applicable	不適用 Not Applicable	不適用 Not Applicable	不適用 Not Applicable
層與層之間的高度(毫米) Floor-to-Floor Height (mm)		不適用 Not Applicable	不適用 Not Applicable	不適用 Not Applicable	不適用 Not Applicable

因住宅物業的較高樓層的結構牆的厚度遞減，較高樓層的內部面積，一般比較低樓層的內部面積稍大。

The internal areas of the residential properties on the upper floors will generally be slightly larger than those on the lower floors because of the reducing thickness of the structural walls on the upper floors.

請參閱本售樓說明書第63頁為住宅物業的樓面平面圖而設之備註和圖例。

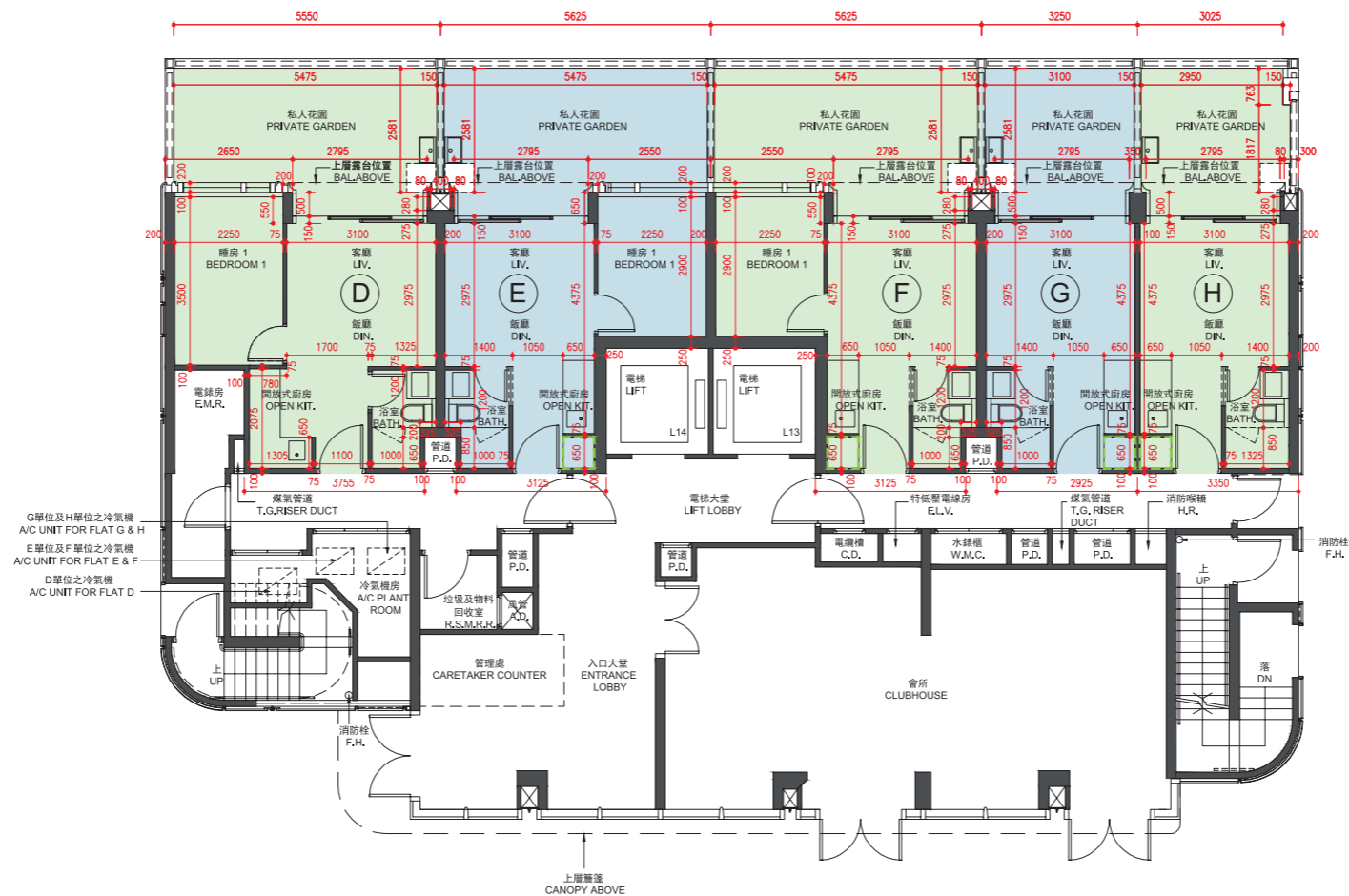
Please refer to page 63 of this sales brochure for the remarks and legends for the floor plans of residential properties.

10 期數的住宅物業的樓面平面圖

FLOOR PLANS OF RESIDENTIAL PROPERTIES IN THE PHASE

低座A座 CONDOMINIUM A

地下
G/F



備註：平面圖所列數字為以毫米標示之建築結構尺寸。
Note: The dimensions of floor plans are all structural dimensions in millimeter.

比例尺 Scale 0米(m) 5米(m)

10 期數的住宅物業的樓面平面圖

FLOOR PLANS OF RESIDENTIAL PROPERTIES IN THE PHASE

每個住宅物業 Each Residential Property	樓層 FLOOR	低座A座 CONDOMINIUM A				
		單位 FLAT				
		D	E	F	G	H
樓板(不包括灰泥)的厚度(毫米) Thickness of Floor Slab (excluding plaster) (mm)	地下 G/F	150	150	150	150	150
層與層之間的高度(毫米) Floor-to-Floor Height (mm)		3120, 3170	2870, 3120, 3170	2870, 2920, 3170	2870, 2920, 3170	2870, 2920, 3170

因住宅物業的較高樓層的結構牆的厚度遞減，較高樓層的內部面積，一般比較低樓層的內部面積稍大。

The internal areas of the residential properties on the upper floors will generally be slightly larger than those on the lower floors because of the reducing thickness of the structural walls on the upper floors.

私人花園空白位置為供維修大廈設備使用的公用地方。

Blank areas on the private garden are common areas for building facility maintenance.

請參閱本售樓說明書第63頁為住宅物業的樓面平面圖而設之備註和圖例。

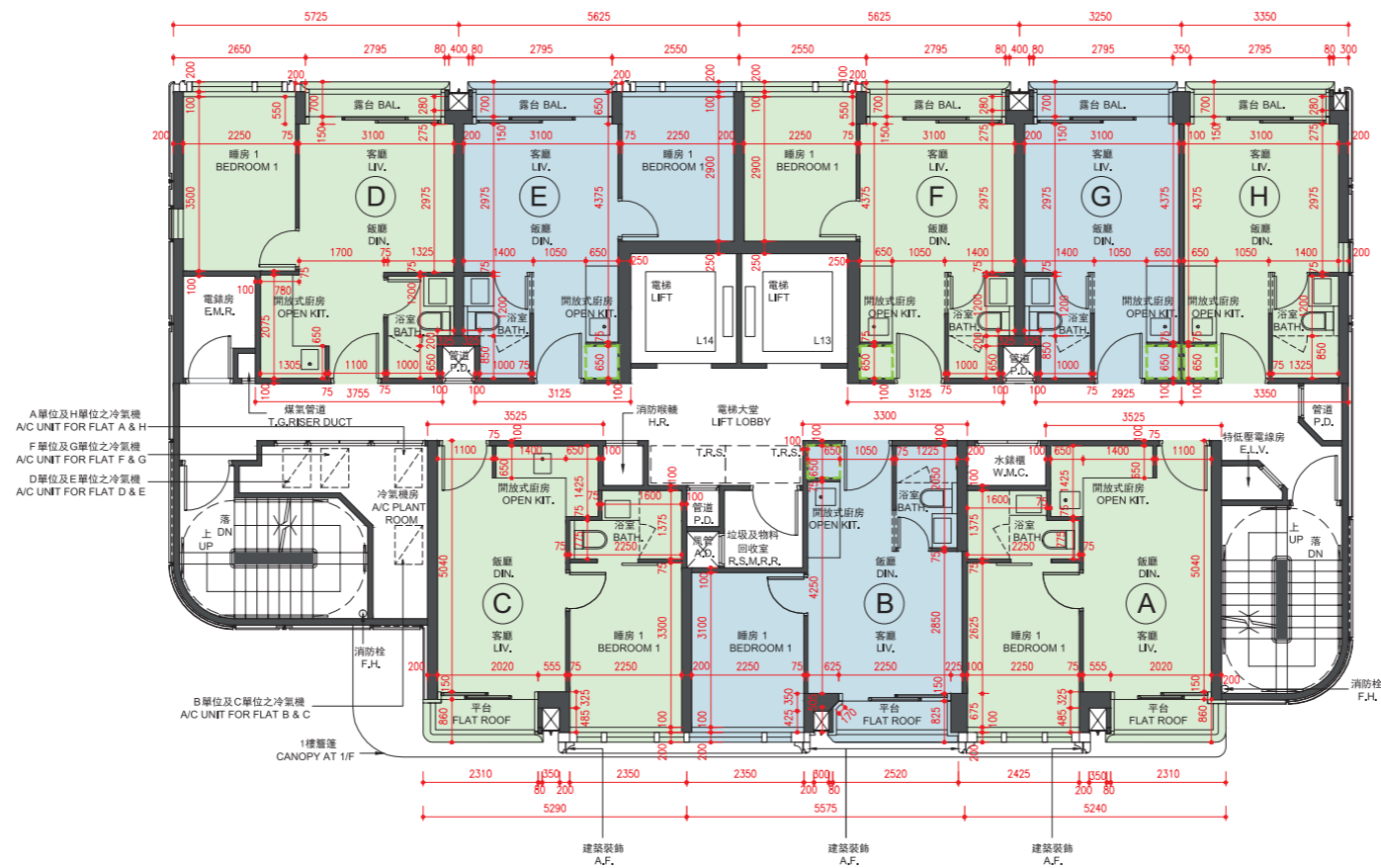
Please refer to page 63 of this sales brochure for the remarks and legends for the floor plans of residential properties.

10 期數的住宅物業的樓面平面圖

FLOOR PLANS OF RESIDENTIAL PROPERTIES IN THE PHASE

低座A座 CONDOMINIUM A

1樓
1/F



備註：平面圖所列數字為以毫米標示之建築結構尺寸。
Note: The dimensions of floor plans are all structural dimensions in millimeter.

比例尺 Scale 0米(m) 5米(m)

10 期數的住宅物業的樓面平面圖

FLOOR PLANS OF RESIDENTIAL PROPERTIES IN THE PHASE

每個住宅物業 Each Residential Property	樓層 FLOOR	低座A座 CONDOMINIUM A							
		單位 FLAT							
		A	B	C	D	E	F	G	H
樓板(不包括灰泥)的厚度(毫米) Thickness of Floor Slab (excluding plaster) (mm)	1樓 1/F	150	150	150	150	150	150	150	150
層與層之間的高度(毫米) Floor-to-Floor Height (mm)		3170	3170	3170	3170	3170	3170	3170	3170

因住宅物業的較高樓層的結構牆的厚度遞減，較高樓層的內部面積，一般比較低樓層的內部面積稍大。

The internal areas of the residential properties on the upper floors will generally be slightly larger than those on the lower floors because of the reducing thickness of the structural walls on the upper floors.

請參閱本售樓說明書第63頁為住宅物業的樓面平面圖而設之備註和圖例。

Please refer to page 63 of this sales brochure for the remarks and legends for the floor plans of residential properties.

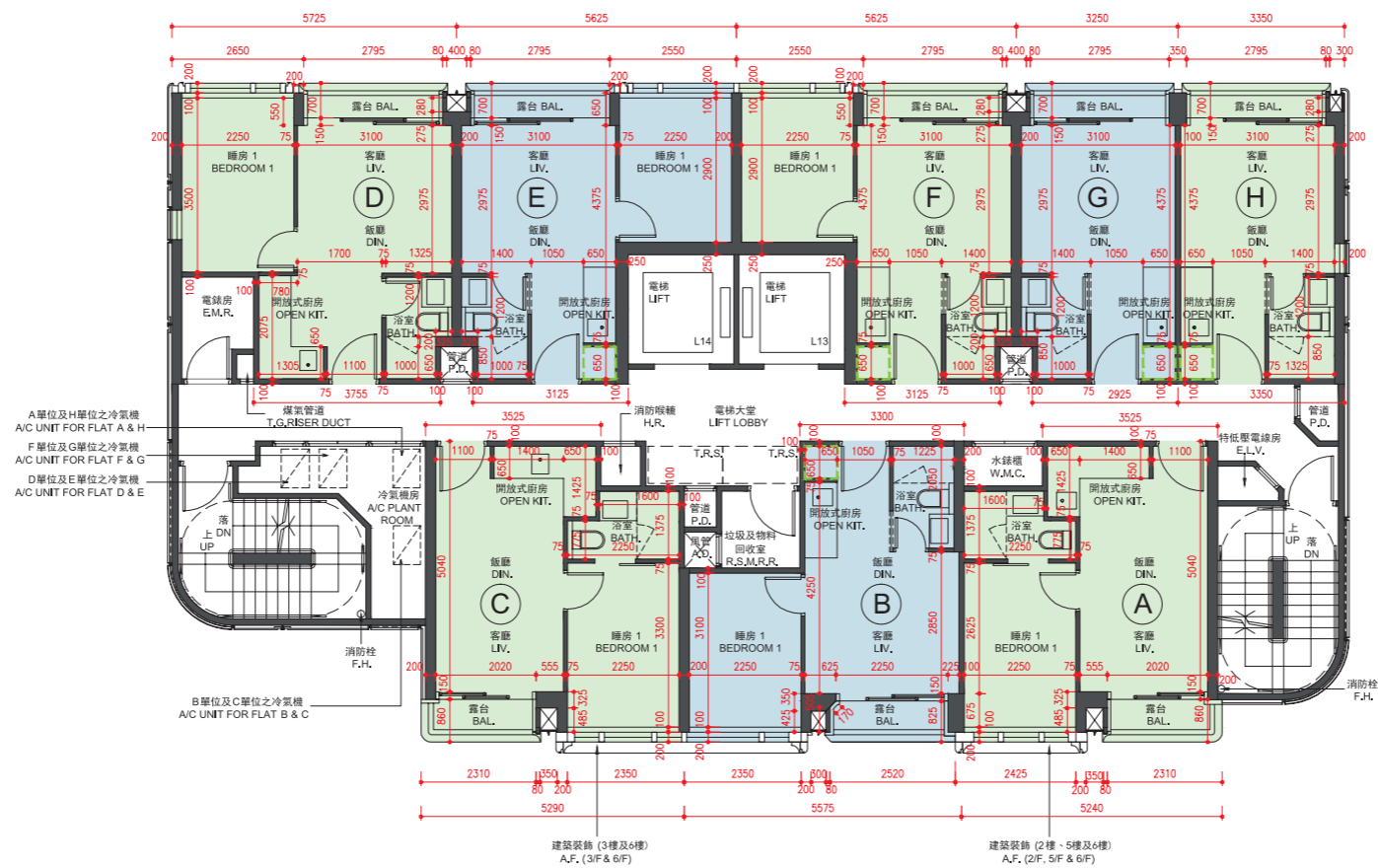
10 期數的住宅物業的樓面平面圖

FLOOR PLANS OF RESIDENTIAL PROPERTIES IN THE PHASE

低座A座 CONDOMINIUM A

2樓至3樓及5樓至6樓

2/F - 3/F and 5/F - 6/F



備註：平面圖所列數字為以毫米標示之建築結構尺寸。

Note: The dimensions of floor plans are all structural dimensions in millimeter.

比例尺 Scale 0米(m) 5米(m)

10 期數的住宅物業的樓面平面圖

FLOOR PLANS OF RESIDENTIAL PROPERTIES IN THE PHASE

每個住宅物業 Each Residential Property	樓層 FLOOR	低座A座 CONDOMINIUM A							
		單位 FLAT							
		A	B	C	D	E	F	G	H
樓板(不包括灰泥)的厚度(毫米) Thickness of Floor Slab (excluding plaster) (mm)	2樓至3樓及5樓至6樓 2/F - 3/F and 5/F - 6/F	150	150	150	150	150	150	150	150
層與層之間的高度(毫米) Floor-to-Floor Height (mm)		3170	3170	3170	3170	3170	3170	3170	3170

因住宅物業的較高樓層的結構牆的厚度遞減，較高樓層的內部面積，一般比較低樓層的內部面積稍大。

The internal areas of the residential properties on the upper floors will generally be slightly larger than those on the lower floors because of the reducing thickness of the structural walls on the upper floors.

請參閱本售樓說明書第63頁為住宅物業的樓面平面圖而設之備註和圖例。

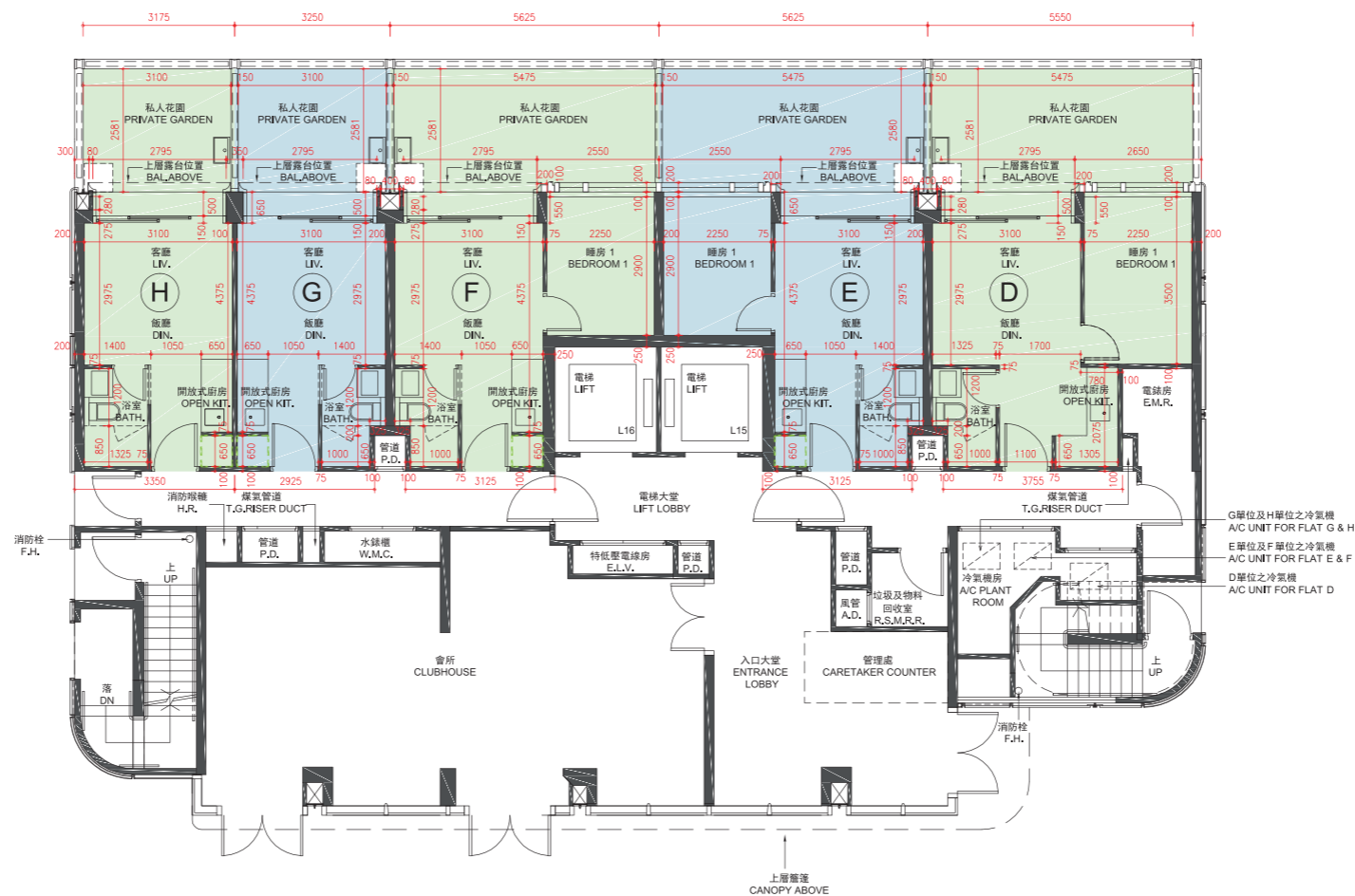
Please refer to page 63 of this sales brochure for the remarks and legends for the floor plans of residential properties.

10 期數的住宅物業的樓面平面圖

FLOOR PLANS OF RESIDENTIAL PROPERTIES IN THE PHASE

低座B座 CONDOMINIUM B

地下
G/F



G單位及H單位之冷氣機
A/C UNIT FOR FLAT G & H
E單位及F單位之冷氣機
A/C UNIT FOR FLAT E & F
D單位之冷氣機
A/C UNIT FOR FLAT D

備註：平面圖所列數字為以毫米標示之建築結構尺寸。
Note: The dimensions of floor plans are all structural dimensions in millimeter.

比例尺 Scale 0米(m) 5米(m)

10 期數的住宅物業的樓面平面圖

FLOOR PLANS OF RESIDENTIAL PROPERTIES IN THE PHASE

每個住宅物業 Each Residential Property	樓層 FLOOR	低座B座 CONDOMINIUM B				
		單位 FLAT				
		D	E	F	G	H
樓板(不包括灰泥)的厚度(毫米) Thickness of Floor Slab (excluding plaster) (mm)	地下 G/F	150	150	150	150	150
層與層之間的高度(毫米) Floor-to-Floor Height (mm)		3120, 3170	2870, 3120, 3170	2870, 3170	2870, 2920, 3170	2870, 2920, 3170

因住宅物業的較高樓層的結構牆的厚度遞減，較高樓層的內部面積，一般比較低樓層的內部面積稍大。

The internal areas of the residential properties on the upper floors will generally be slightly larger than those on the lower floors because of the reducing thickness of the structural walls on the upper floors.

私人花園空白位置為供維修大廈設備使用的公用地方。

Blank areas on the private garden are common areas for building facility maintenance.

請參閱本售樓說明書第63頁為住宅物業的樓面平面圖而設之備註和圖例。

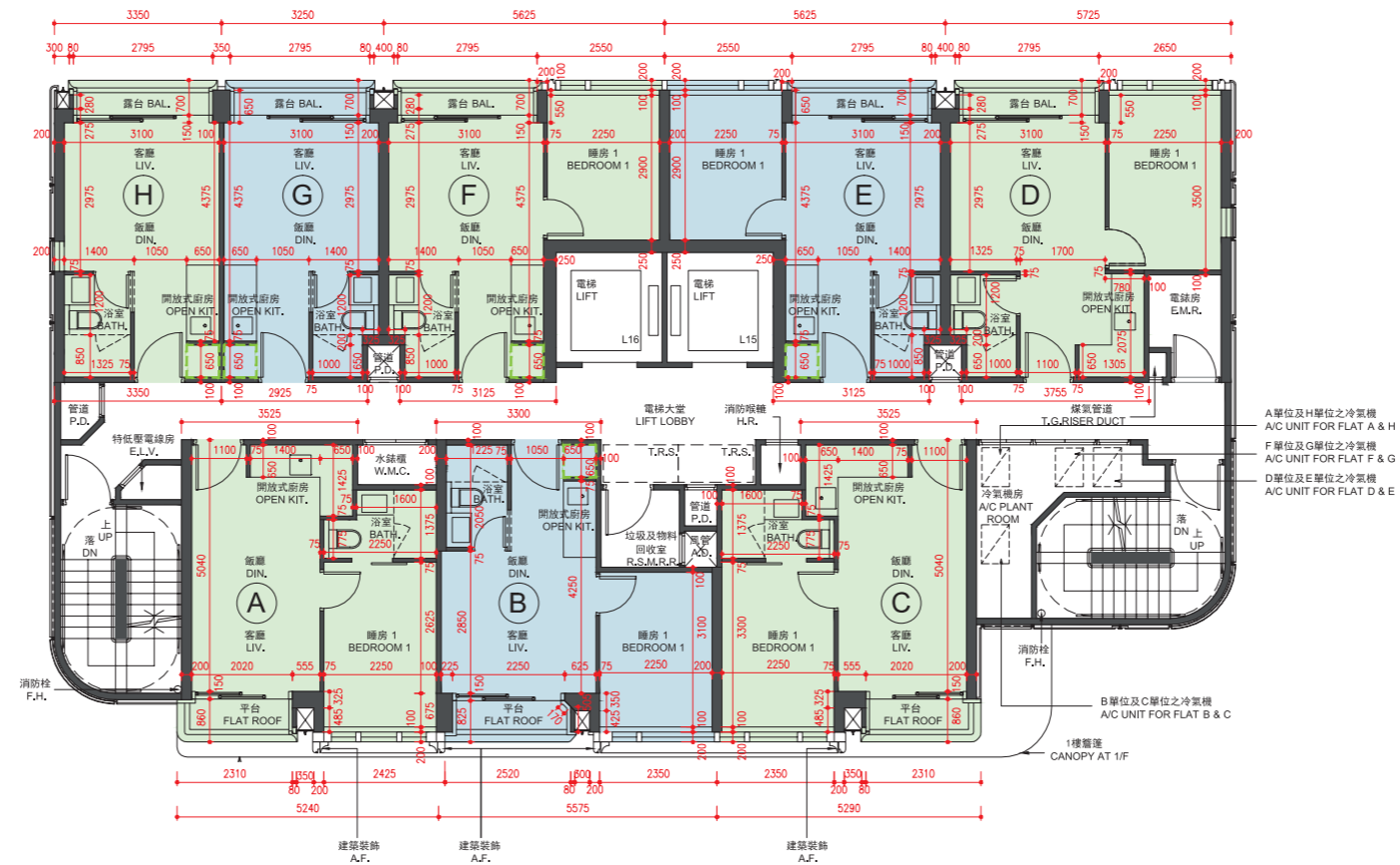
Please refer to page 63 of this sales brochure for the remarks and legends for the floor plans of residential properties.

10 期數的住宅物業的樓面平面圖

FLOOR PLANS OF RESIDENTIAL PROPERTIES IN THE PHASE

低座B座 CONDOMINIUM B

1樓
1/F



備註：平面圖所列數字為以毫米標示之建築結構尺寸。
 Note : The dimensions of floor plans are all structural dimensions in millimeter.

比例尺 Scale 0米(m) 5米(m)

10 期數的住宅物業的樓面平面圖

FLOOR PLANS OF RESIDENTIAL PROPERTIES IN THE PHASE

每個住宅物業 Each Residential Property	樓層 FLOOR	低座B座 CONDOMINIUM B							
		單位 FLAT							
		A	B	C	D	E	F	G	H
樓板(不包括灰泥)的厚度(毫米) Thickness of Floor Slab (excluding plaster) (mm)	1樓 1/F	150	150	150	150	150	150	150	150
層與層之間的高度(毫米) Floor-to-Floor Height (mm)		3170	3170	3170	3170	3170	3170	3170	3170

因住宅物業的較高樓層的結構牆的厚度遞減，較高樓層的內部面積，一般比較低樓層的內部面積稍大。

The internal areas of the residential properties on the upper floors will generally be slightly larger than those on the lower floors because of the reducing thickness of the structural walls on the upper floors.

請參閱本售樓說明書第63頁為住宅物業的樓面平面圖而設之備註和圖例。

Please refer to page 63 of this sales brochure for the remarks and legends for the floor plans of residential properties.

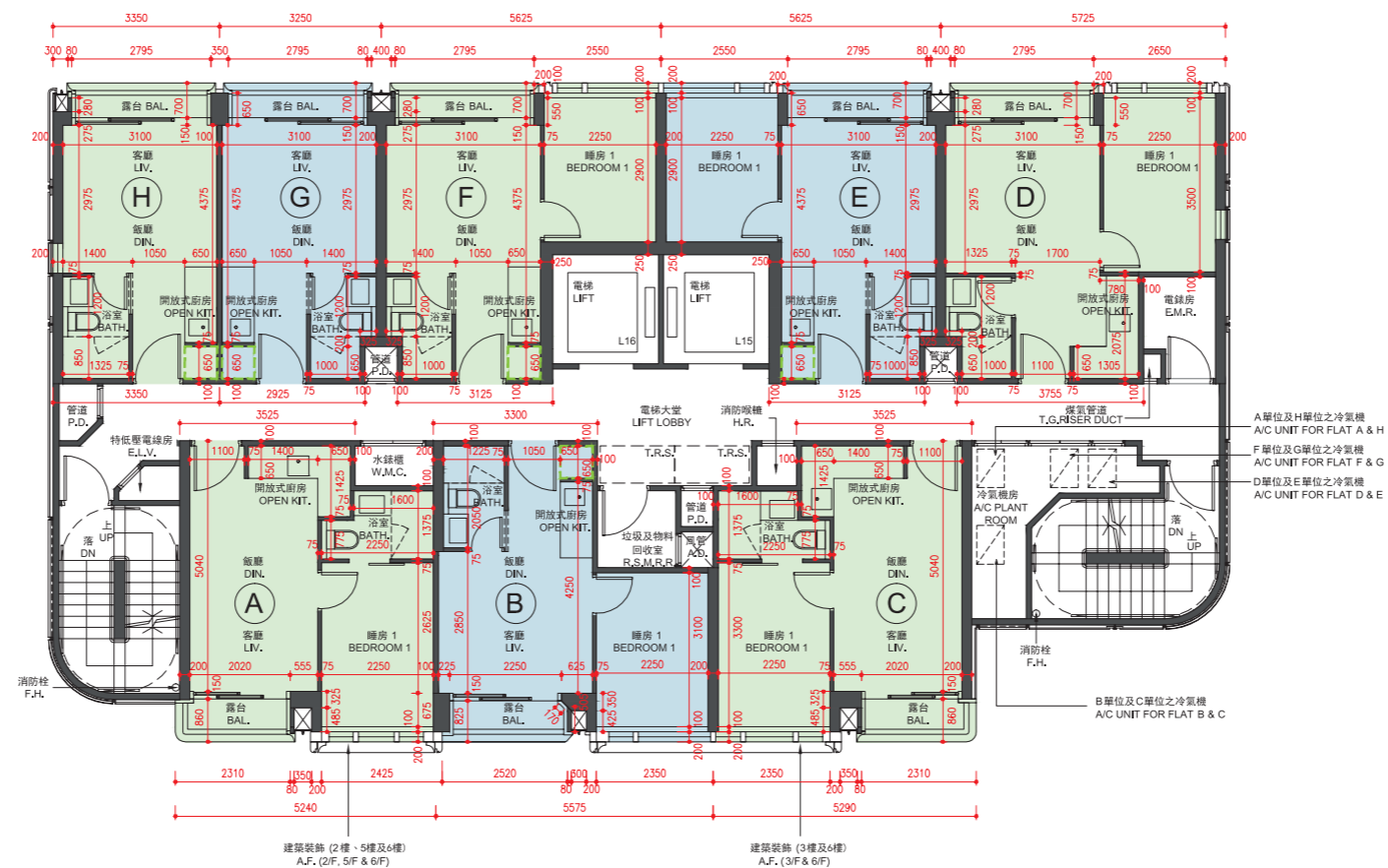
10 期數的住宅物業的樓面平面圖

FLOOR PLANS OF RESIDENTIAL PROPERTIES IN THE PHASE

低座B座 CONDOMINIUM B

2樓至3樓及5樓至6樓

2/F - 3/F and 5/F - 6/F



備註：平面圖所列數字為以毫米標示之建築結構尺寸。
Note: The dimensions of floor plans are all structural dimensions in millimeter.

比例尺 Scale 0米(m) 5米(m)

10 期數的住宅物業的樓面平面圖

FLOOR PLANS OF RESIDENTIAL PROPERTIES IN THE PHASE

每個住宅物業 Each Residential Property	樓層 FLOOR	低座B座 CONDOMINIUM B							
		單位 FLAT							
		A	B	C	D	E	F	G	H
樓板(不包括灰泥)的厚度(毫米) Thickness of Floor Slab (excluding plaster) (mm)	2樓至3樓及5樓至6樓 2/F - 3/F and 5/F - 6/F	150	150	150	150	150	150	150	150
層與層之間的高度(毫米) Floor-to-Floor Height (mm)		3170	3170	3170	3170	3170	3170	3170	3170

因住宅物業的較高樓層的結構牆的厚度遞減，較高樓層的內部面積，一般比較低樓層的內部面積稍大。

The internal areas of the residential properties on the upper floors will generally be slightly larger than those on the lower floors because of the reducing thickness of the structural walls on the upper floors.

請參閱本售樓說明書第63頁為住宅物業的樓面平面圖而設之備註和圖例。

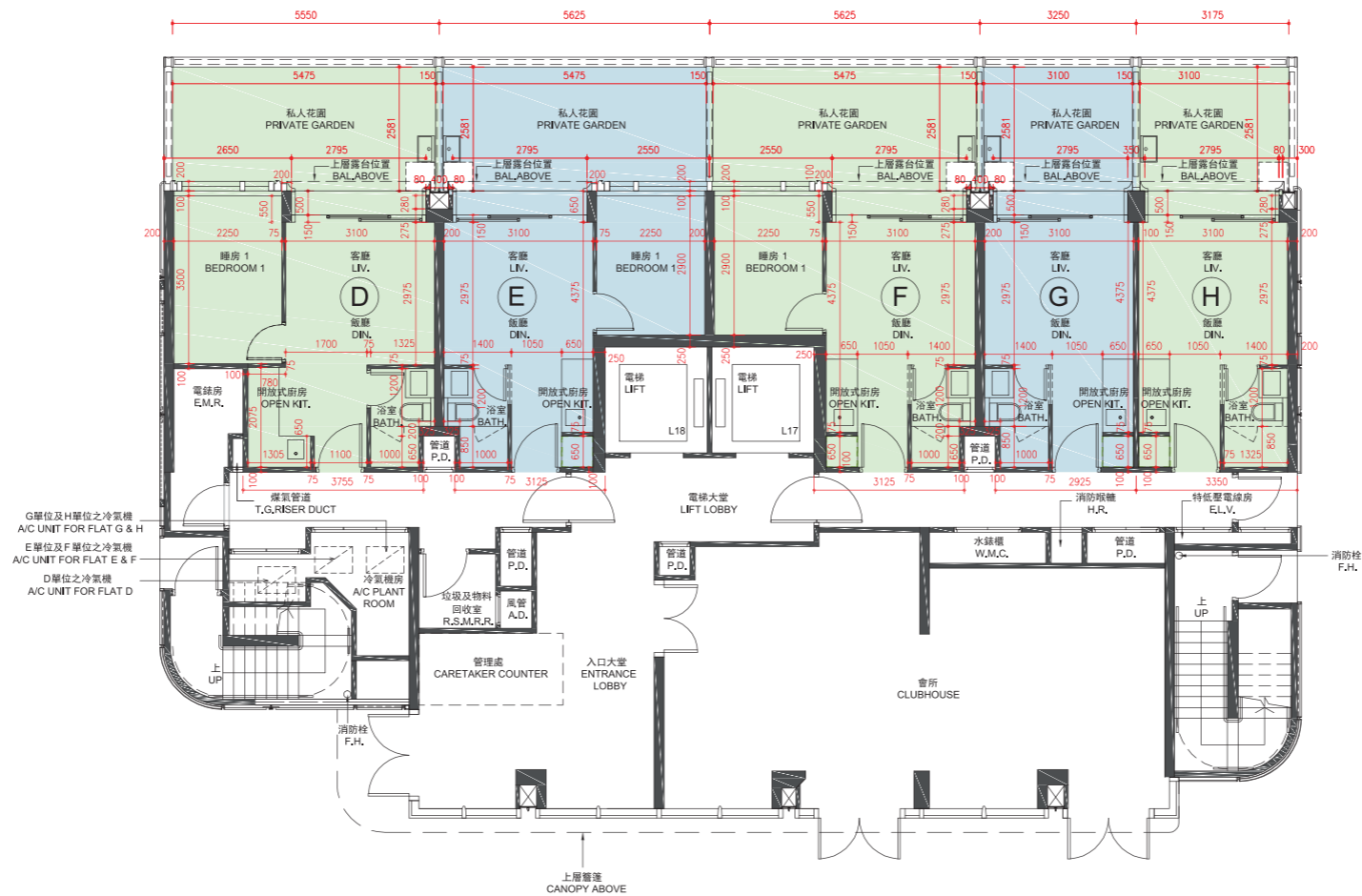
Please refer to page 63 of this sales brochure for the remarks and legends for the floor plans of residential properties.

10 期數的住宅物業的樓面平面圖

FLOOR PLANS OF RESIDENTIAL PROPERTIES IN THE PHASE

低座C座 CONDOMINIUM C

地下
G/F



G單位及H單位之冷氣機
A/C UNIT FOR FLAT G & H
E單位及F單位之冷氣機
A/C UNIT FOR FLAT E & F
D單位之冷氣機
A/C UNIT FOR FLAT D

備註：平面圖所列數字為以毫米標示之建築結構尺寸。
Note: The dimensions of floor plans are all structural dimensions in millimeter.

比例尺 Scale 0米(m) 5米(m)

10 期數的住宅物業的樓面平面圖

FLOOR PLANS OF RESIDENTIAL PROPERTIES IN THE PHASE

每個住宅物業 Each Residential Property	樓層 FLOOR	低座C座 CONDOMINIUM C				
		單位 FLAT				
		D	E	F	G	H
樓板(不包括灰泥)的厚度(毫米) Thickness of Floor Slab (excluding plaster) (mm)	地下 G/F	150	150	150	150	150
層與層之間的高度(毫米) Floor-to-Floor Height (mm)		2870, 2920, 3170	2870, 2920, 3170	2870, 2920, 3170	2870, 2920, 3170	2870, 2920, 3170

因住宅物業的較高樓層的結構牆的厚度遞減，較高樓層的內部面積，一般比較低樓層的內部面積稍大。

The internal areas of the residential properties on the upper floors will generally be slightly larger than those on the lower floors because of the reducing thickness of the structural walls on the upper floors.

私人花園空白位置為供維修大廈設備使用的公用地方。

Blank areas on the private garden are common areas for building facility maintenance.

請參閱本售樓說明書第63頁為住宅物業的樓面平面圖而設之備註和圖例。

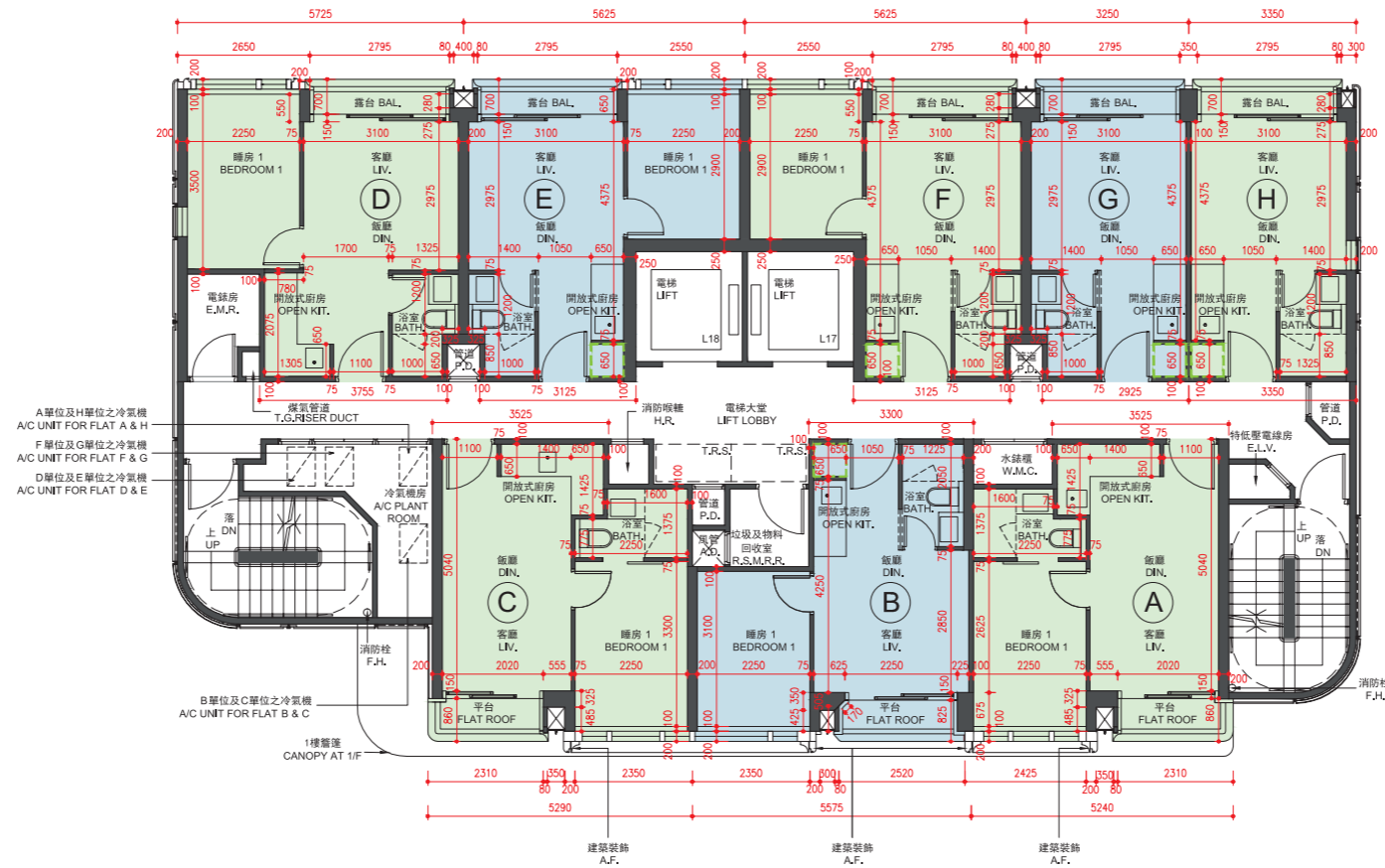
Please refer to page 63 of this sales brochure for the remarks and legends for the floor plans of residential properties.

10 期數的住宅物業的樓面平面圖

FLOOR PLANS OF RESIDENTIAL PROPERTIES IN THE PHASE

低座C座 CONDOMINIUM C

1樓
1/F



比例尺 Scale 0米(m) 5米(m)

10 期數的住宅物業的樓面平面圖

FLOOR PLANS OF RESIDENTIAL PROPERTIES IN THE PHASE

每個住宅物業 Each Residential Property	樓層 FLOOR	低座C座 CONDOMINIUM C							
		單位 FLAT							
		A	B	C	D	E	F	G	H
樓板(不包括灰泥)的厚度(毫米) Thickness of Floor Slab (excluding plaster) (mm)	1樓 1/F	150	150	150	150	150	150	150	150
層與層之間的高度(毫米) Floor-to-Floor Height (mm)		3170	3170	3170	3170	3170	3170	3170	3170

因住宅物業的較高樓層的結構牆的厚度遞減，較高樓層的內部面積，一般比較低樓層的內部面積稍大。

The internal areas of the residential properties on the upper floors will generally be slightly larger than those on the lower floors because of the reducing thickness of the structural walls on the upper floors.

請參閱本售樓說明書第63頁為住宅物業的樓面平面圖而設之備註和圖例。

Please refer to page 63 of this sales brochure for the remarks and legends for the floor plans of residential properties.

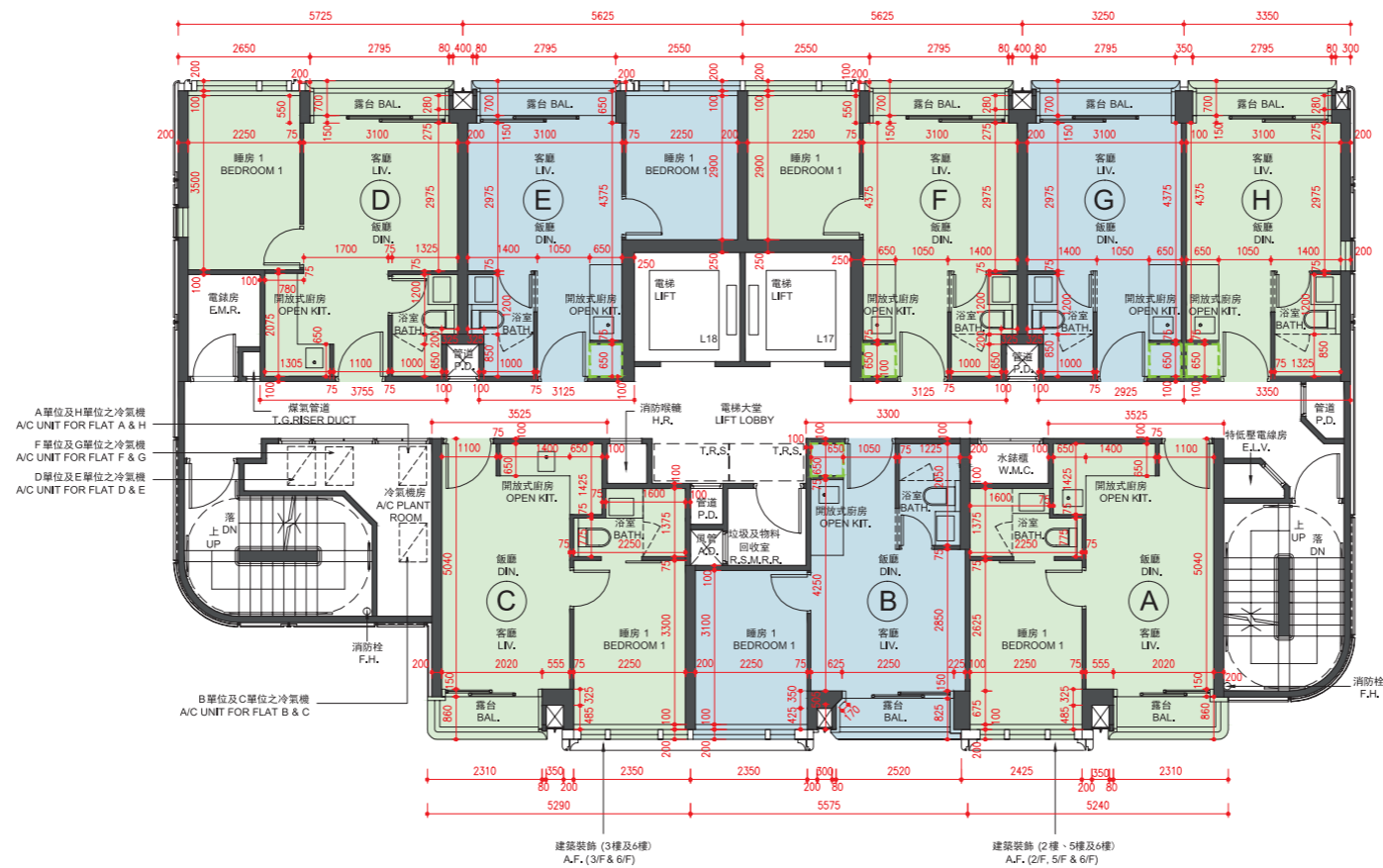
10 期數的住宅物業的樓面平面圖

FLOOR PLANS OF RESIDENTIAL PROPERTIES IN THE PHASE

低座C座 CONDOMINIUM C

2樓至3樓及5樓至6樓

2/F - 3/F and 5/F - 6/F



備註：平面圖所列數字為以毫米標示之建築結構尺寸。
 Note: The dimensions of floor plans are all structural dimensions in millimeter.

比例尺 Scale 0米(m) 5米(m)

10 期數的住宅物業的樓面平面圖

FLOOR PLANS OF RESIDENTIAL PROPERTIES IN THE PHASE

每個住宅物業 Each Residential Property	樓層 FLOOR	低座C座 CONDOMINIUM C							
		單位 FLAT							
		A	B	C	D	E	F	G	H
樓板(不包括灰泥)的厚度(毫米) Thickness of Floor Slab (excluding plaster) (mm)	2樓至3樓及5樓至6樓 2/F - 3/F and 5/F - 6/F	150	150	150	150	150	150	150	150
層與層之間的高度(毫米) Floor-to-Floor Height (mm)		3170	3170	3170	3170	3170	3170	3170	3170

因住宅物業的較高樓層的結構牆的厚度遞減，較高樓層的內部面積，一般比較低樓層的內部面積稍大。

The internal areas of the residential properties on the upper floors will generally be slightly larger than those on the lower floors because of the reducing thickness of the structural walls on the upper floors.

請參閱本售樓說明書第63頁為住宅物業的樓面平面圖而設之備註和圖例。

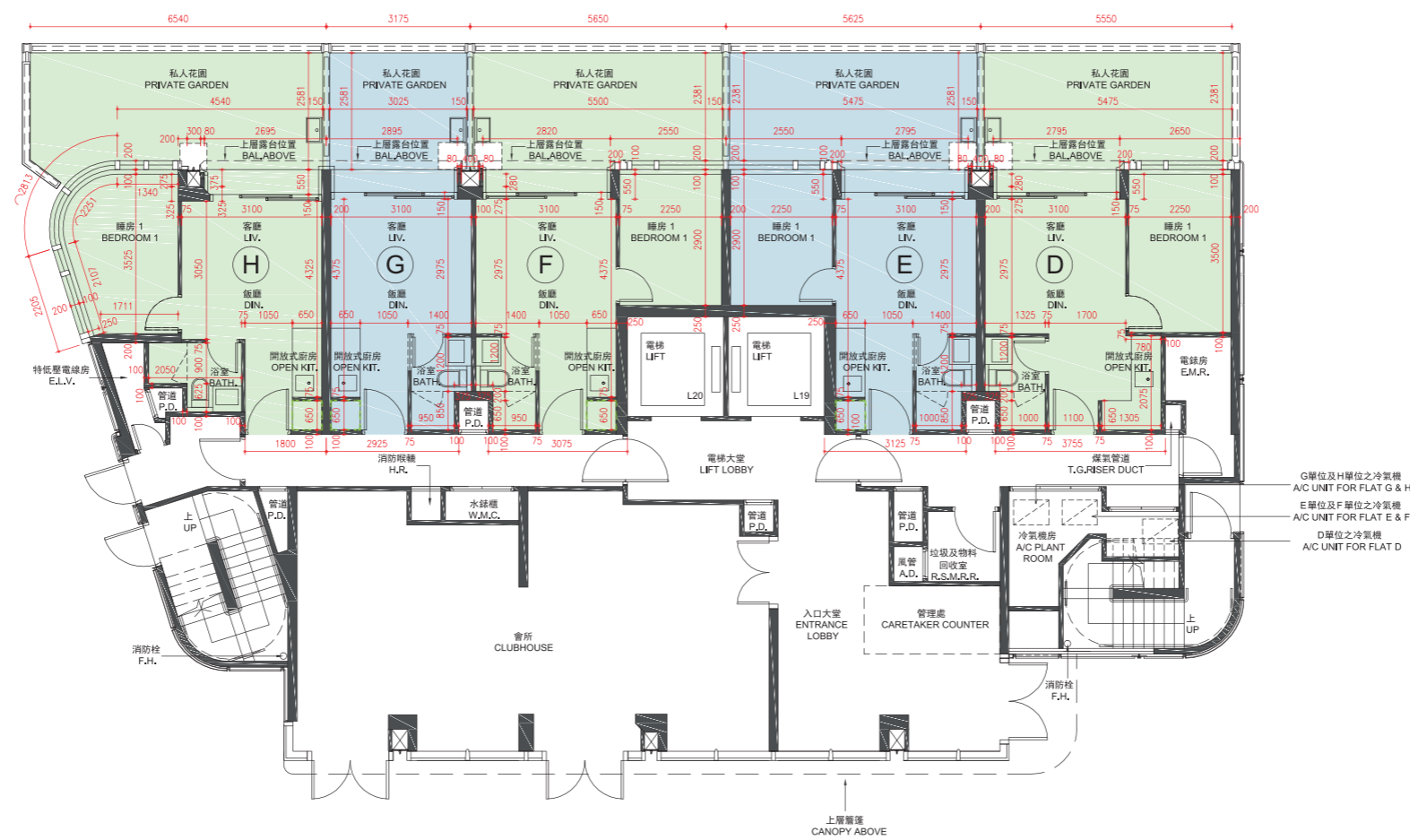
Please refer to page 63 of this sales brochure for the remarks and legends for the floor plans of residential properties.

10 期數的住宅物業的樓面平面圖

FLOOR PLANS OF RESIDENTIAL PROPERTIES IN THE PHASE

低座D座 CONDOMINIUM D

地下
G/F



G單位及H單位之冷氣機
A/C UNIT FOR FLAT G & H
E單位及F單位之冷氣機
A/C UNIT FOR FLAT E & F
D單位之冷氣機
A/C UNIT FOR FLAT D

備註：平面圖所列數字為以毫米標示之建築結構尺寸。
Note: The dimensions of floor plans are all structural dimensions in millimeter.

比例尺 Scale 0米(m) 5米(m)

10 期數的住宅物業的樓面平面圖

FLOOR PLANS OF RESIDENTIAL PROPERTIES IN THE PHASE

每個住宅物業 Each Residential Property	樓層 FLOOR	低座D座 CONDOMINIUM D				
		單位 FLAT				
		D	E	F	G	H
樓板(不包括灰泥)的厚度(毫米) Thickness of Floor Slab (excluding plaster) (mm)	地下 G/F	150	150	150	150	150
層與層之間的高度(毫米) Floor-to-Floor Height (mm)		2870, 2920, 3170	2870, 2920, 3170	2870, 2920, 3170	2870, 2920, 3170	2870, 2920, 3170

因住宅物業的較高樓層的結構牆的厚度遞減，較高樓層的內部面積，一般比較低樓層的內部面積稍大。

The internal areas of the residential properties on the upper floors will generally be slightly larger than those on the lower floors because of the reducing thickness of the structural walls on the upper floors.

私人花園空白位置為供維修大廈設備使用的公用地方。

Blank areas on the private garden are common areas for building facility maintenance.

請參閱本售樓說明書第63頁為住宅物業的樓面平面圖而設之備註和圖例。

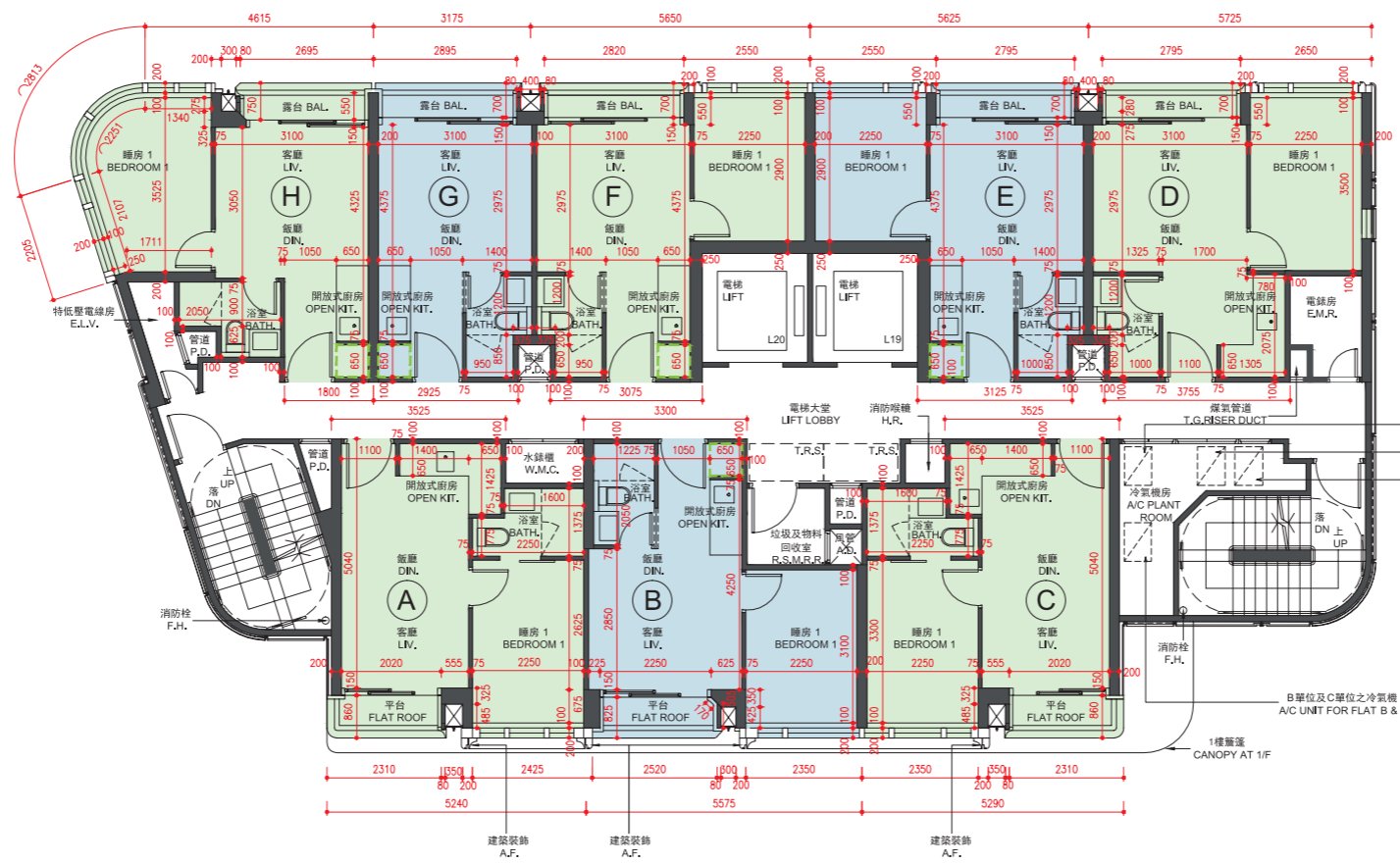
Please refer to page 63 of this sales brochure for the remarks and legends for the floor plans of residential properties.

10 期數的住宅物業的樓面平面圖

FLOOR PLANS OF RESIDENTIAL PROPERTIES IN THE PHASE

低座D座 CONDOMINIUM D

1樓
1/F



- A單位及H單位之冷氣機
A/C UNIT FOR FLAT A & H
- F單位及G單位之冷氣機
A/C UNIT FOR FLAT F & G
- D單位及E單位之冷氣機
A/C UNIT FOR FLAT D & E
- B單位及C單位之冷氣機
A/C UNIT FOR FLAT B & C

備註：平面圖所列數字為以毫米標示之建築結構尺寸。
Note : The dimensions of floor plans are all structural dimensions in millimeter.

比例尺 Scale 0米(m) 5米(m)

10 期數的住宅物業的樓面平面圖

FLOOR PLANS OF RESIDENTIAL PROPERTIES IN THE PHASE

每個住宅物業 Each Residential Property	樓層 FLOOR	低座D座 CONDOMINIUM D							
		單位 FLAT							
		A	B	C	D	E	F	G	H
樓板(不包括灰泥)的厚度(毫米) Thickness of Floor Slab (excluding plaster) (mm)	1樓 1/F	150	150	150	150	150	150	150	150
層與層之間的高度(毫米) Floor-to-Floor Height (mm)		3170	3170	3170	3170	3170	3170	3170	3170

因住宅物業的較高樓層的結構牆的厚度遞減，較高樓層的內部面積，一般比較低樓層的內部面積稍大。

The internal areas of the residential properties on the upper floors will generally be slightly larger than those on the lower floors because of the reducing thickness of the structural walls on the upper floors.

請參閱本售樓說明書第63頁為住宅物業的樓面平面圖而設之備註和圖例。

Please refer to page 63 of this sales brochure for the remarks and legends for the floor plans of residential properties.

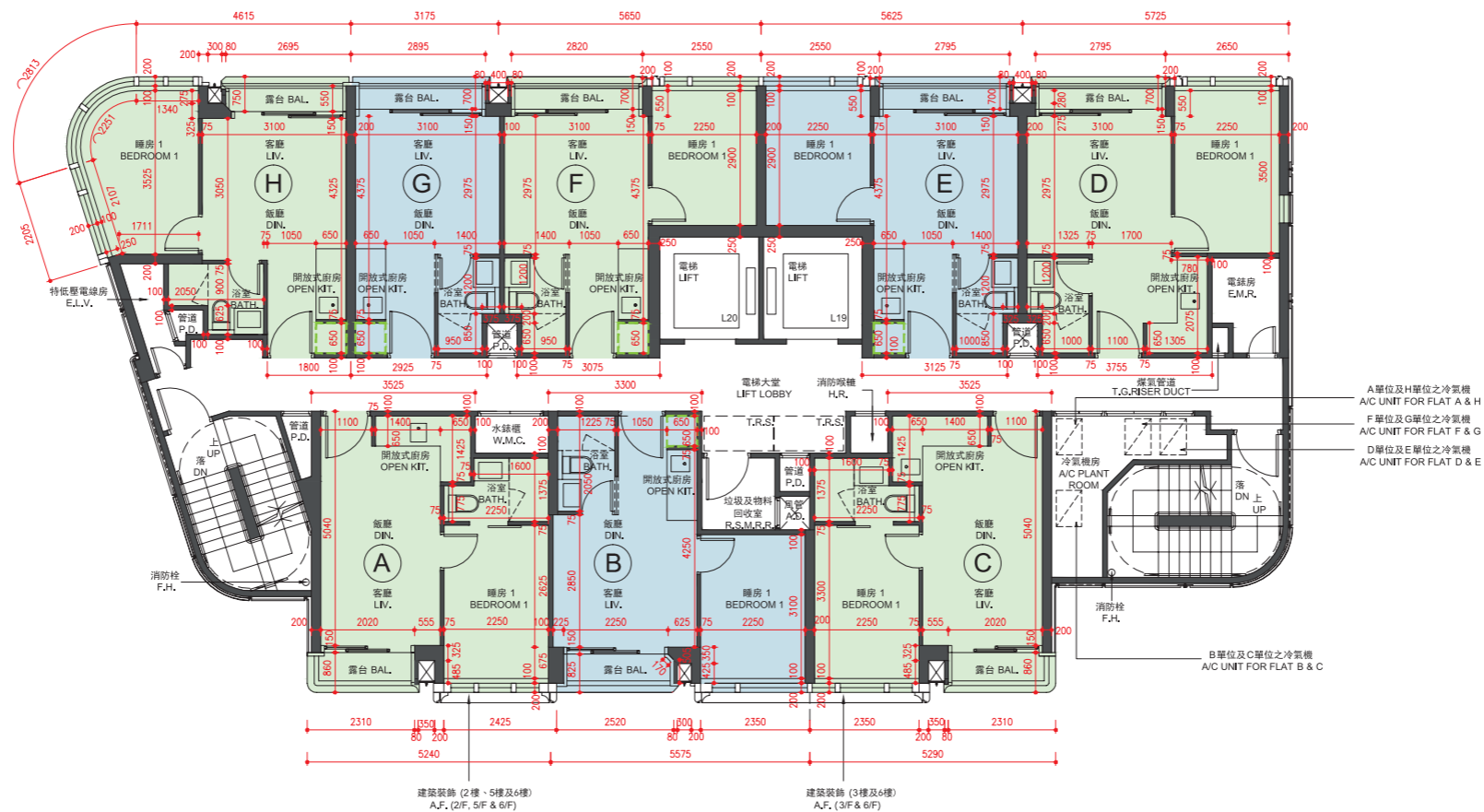
10 期數的住宅物業的樓面平面圖

FLOOR PLANS OF RESIDENTIAL PROPERTIES IN THE PHASE

低座D座 CONDOMINIUM D

2樓至3樓及5樓至6樓

2/F - 3/F and 5/F - 6/F



備註：平面圖所列數字為以毫米標示之建築結構尺寸。

Note: The dimensions of floor plans are all structural dimensions in millimeter.

比例尺 Scale 0米(m) 5米(m)

10 期數的住宅物業的樓面平面圖

FLOOR PLANS OF RESIDENTIAL PROPERTIES IN THE PHASE

每個住宅物業 Each Residential Property	樓層 FLOOR	低座D座 CONDOMINIUM D							
		單位 FLAT							
		A	B	C	D	E	F	G	H
樓板(不包括灰泥)的厚度(毫米) Thickness of Floor Slab (excluding plaster) (mm)	2樓至3樓及5樓至6樓 2/F - 3/F and 5/F - 6/F	150	150	150	150	150	150	150	150
層與層之間的高度(毫米) Floor-to-Floor Height (mm)		3170	3170	3170	3170	3170	3170	3170	3170

因住宅物業的較高樓層的結構牆的厚度遞減，較高樓層的內部面積，一般比較低樓層的內部面積稍大。

The internal areas of the residential properties on the upper floors will generally be slightly larger than those on the lower floors because of the reducing thickness of the structural walls on the upper floors.

請參閱本售樓說明書第63頁為住宅物業的樓面平面圖而設之備註和圖例。

Please refer to page 63 of this sales brochure for the remarks and legends for the floor plans of residential properties.

10 期數的住宅物業的樓面平面圖

FLOOR PLANS OF RESIDENTIAL PROPERTIES IN THE PHASE

在本頁上之備註和圖例適用於全部的「期數的住宅物業的樓面平面圖」的頁數。

The remarks and legends on this page apply to all pages of "Floor plans of residential properties in the Phase".

備註：


1. 部分住宅物業的露台、工作平台、平台、私人平台、私人花園、私人天台或外牆或設有外露之公用喉管，或外牆裝飾板內藏之公用喉管。
2. 部分住宅物業內之部分天花或有跌級樓板，用以安裝上層之機電設備或配合上層之結構、建築設計及/或裝修設計上的需要。
3. 部分住宅物業內或設有假陣或假天花用以安裝冷氣喉管及/或其他機電設備。
4. 各住宅物業的樓面平面圖內所展示之裝置及設備的圖標如浴缸、洗面盆、座廁、淋浴間、洗滌盤、櫃(如有)等乃根據最新經批准的建築圖則擬備，其形狀、尺寸、比例或與實際提供的裝置及設備存在差異，僅供示意及參考之用。

Notes:

1. Common pipes exposed or enclosed in cladding may be located at the balcony, utility platform, flat roof, private flat roof, private garden, private roof or external wall of some residential properties.
2. There may be sunken slabs at some parts of the ceiling inside some residential properties for the installation of mechanical and electrical services of the floor above or due to the structural, architectural and/or decoration design requirements of the floor above.
3. There may be ceiling bulkheads or false ceiling inside some residential properties for the installation of air-conditioning conduits and/or other mechanical and electrical services.
4. Those icons of fittings and fitments shown on the floor plans of residential properties like bathtubs, wash basins, water closets, shower cubicles, sink units, cabinets (if any) etc. are prepared in accordance with the latest approved building plans. Their shapes, dimensions, scales may be differed from the fittings and fitments actually provided and they are for indication and reference only.

樓面平面圖之圖例

Legends of Floor Plans

A.D.	= 風管 Air duct
A/C PLANT ROOM	= 冷氣機房 Air-conditioning plant room
A.F.	= 建築裝飾 Architectural features
BAL.	= 露台 Balcony
BAL. ABOVE	= 上層露台位置 Balcony above
BATH.	= 浴室 Bathroom
C.D.	= 電纜槽 Cable duct
DIN.	= 飯廳 Dining room
DN	= 落 Down
E.L.V.	= 特低壓電線房 Extra-low voltage room
E.M.R.	= 電錶房 Electrical meter room
F.H.	= 消防栓 Fire hydrant
F.S. WATER PUMP ROOM FOR TOWER 2	= 第2座消防水泵房 Fire service water pump room for Tower 2
F.S. WATER TANK ROOM FOR TOWER 2	= 第2座消防水缸房 Fire service water tank room for Tower 2
H.R.	= 消防喉轆 Hose reel
KIT.	= 廚房 Kitchen
LAV.	= 洗手間 Lavatory
LIV.	= 客廳 Living room
M. BATH.	= 主人浴室 Master bathroom
M. BEDROOM	= 主人睡房 Master bedroom
OPEN KIT.	= 開放式廚房 Open kitchen
P.D.	= 管道 Pipe duct
R.S.M.R.R.	= 垃圾及物料回收室 Refuse storage and material recovery room
STORE	= 儲物房 Store room
T.G. RISER DUCT	= 煤氣管道 Towngas riser duct
T.R.S.	= 臨時庇護處 Temporary refuge space
U.P.	= 工作平台 Utility platform
U.T.	= 工作間 Utility room
W.M.C.	= 水錶櫃 Water meter cabinet
	= 隨樓附送之嵌入式裝置 Built-in fittings provided in the flats