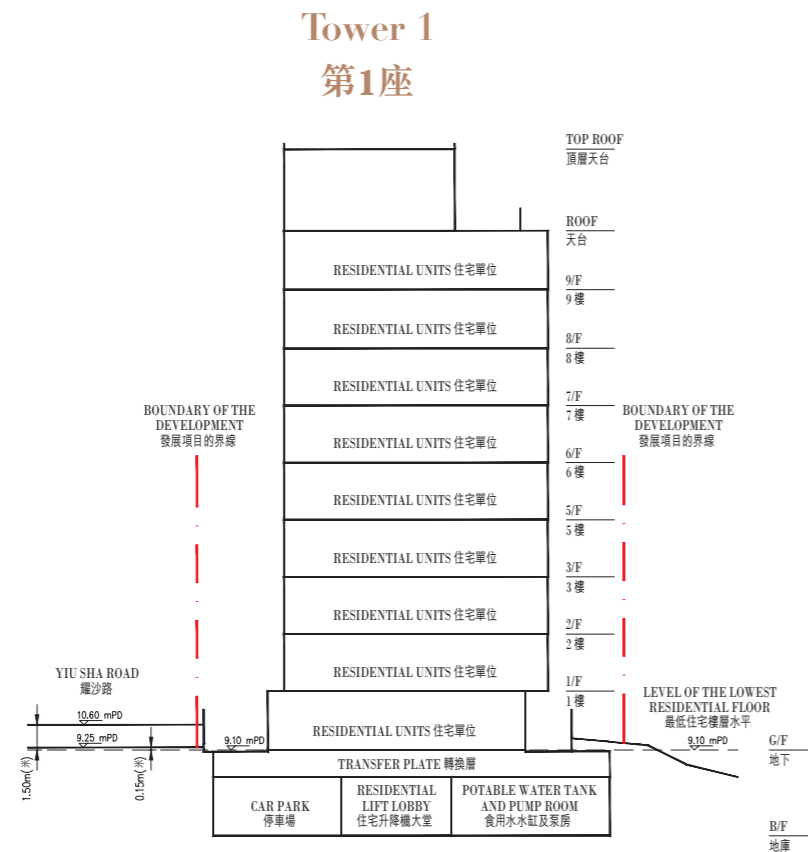


CROSS-SECTION PLAN OF BUILDING IN THE DEVELOPMENT

發展項目中的建築物的橫截面圖

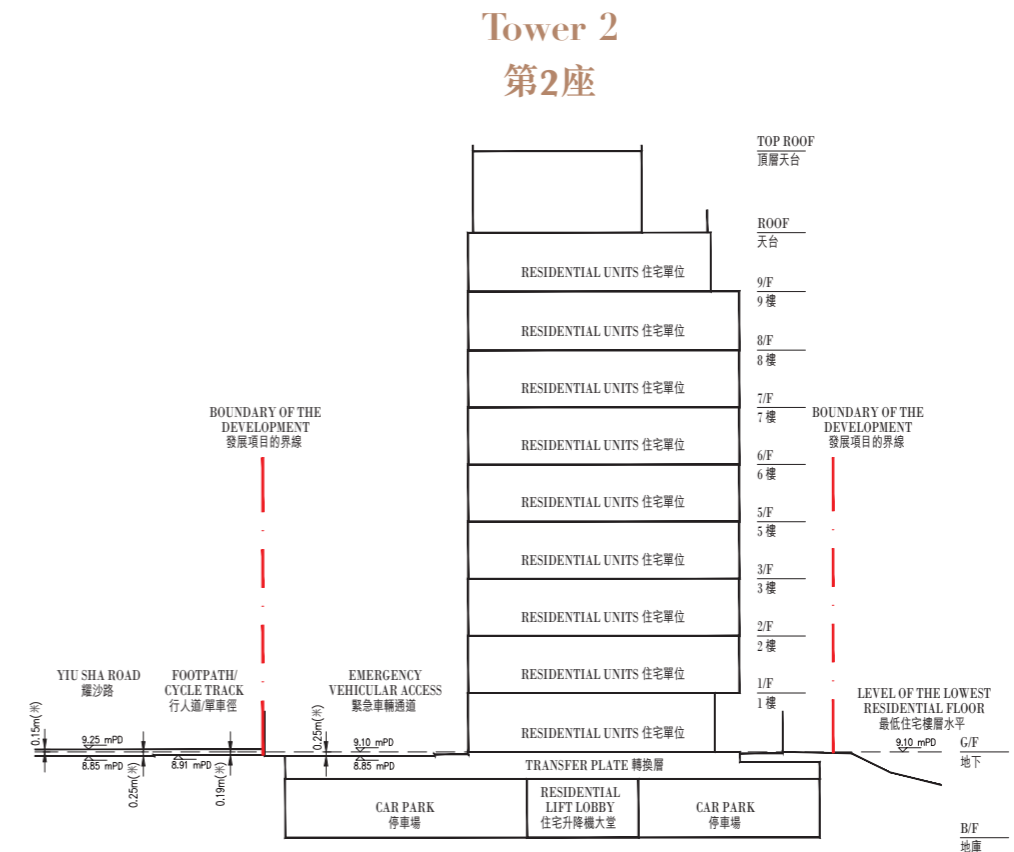
Cross - Section A

橫截面 A

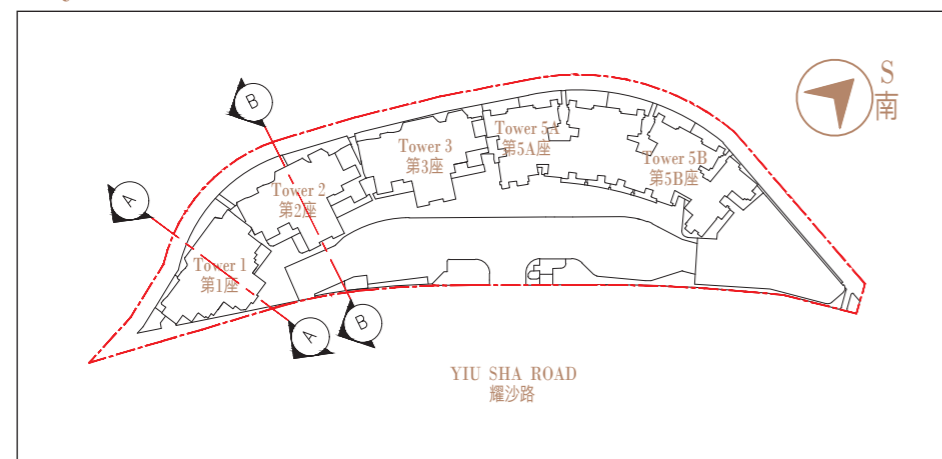


Cross - Section B

橫截面 B



Key Plan 指示圖



Cross - Section A 橫截面 A

1. --- Dotted line denotes the level of the lowest residential floor.
2. ▽ denotes height in metres above Hong Kong Principal Datum.
3. The part of Yiu Sha Road adjacent to the building is 9.25 to 10.60 metres above Hong Kong Principal Datum.

1. --- 虛線為最低住宅樓層水平。
2. ▽ 代表香港主水平基準以上的高度 (米)。
3. 毗鄰建築物的一段耀沙路為香港主水平基準以上9.25至10.60米。

Cross - Section B 橫截面 B

1. --- Dotted line denotes the level of the lowest residential floor.
2. ▽ denotes height in metres above Hong Kong Principal Datum.
3. The part of Yiu Sha Road adjacent to the building is 8.85 to 9.25 metres above Hong Kong Principal Datum.

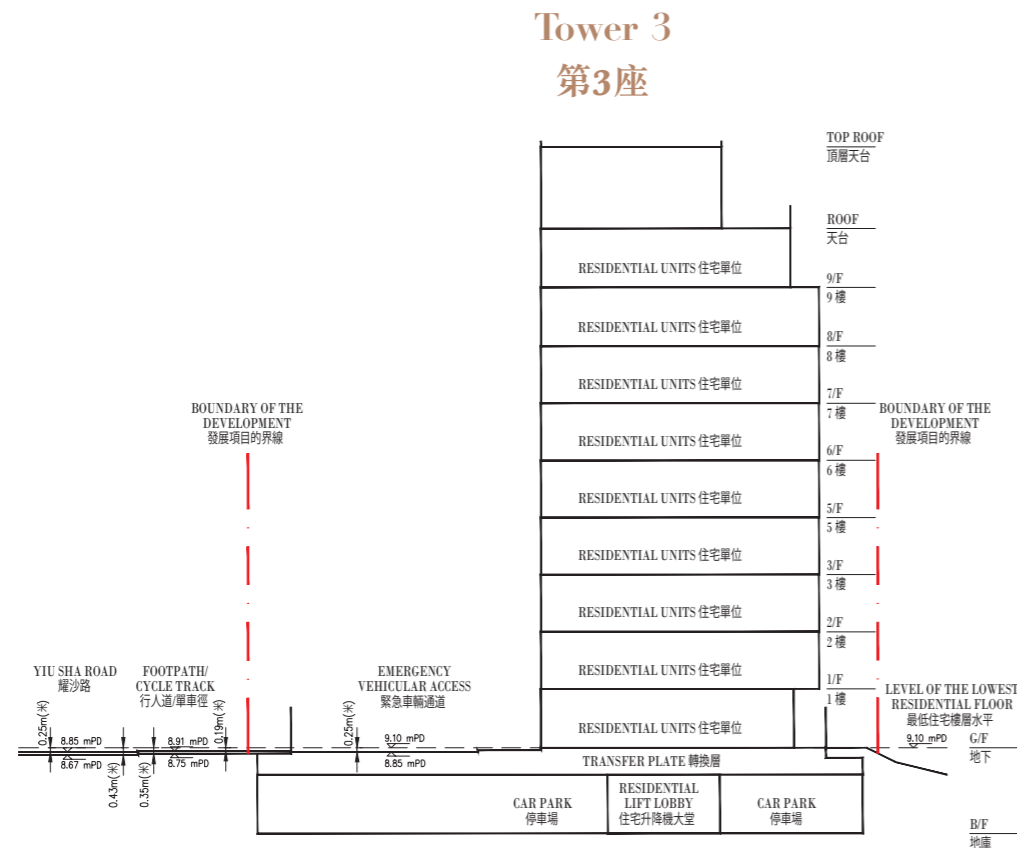
4. The part of the footpath/cycle track adjacent to the building is 8.91 to 9.25 metres above Hong Kong Principal Datum.
 5. The part of the emergency vehicular access adjacent to the building is 8.85 metres above Hong Kong Principal Datum.
1. --- 虛線為最低住宅樓層水平。
 2. ▽ 代表香港主水準基準以上的高度 (米)。
 3. 毗鄰建築物的一段耀沙路為香港主水平基準以上8.85至9.25米。
 4. 毗鄰建築物的一段行人道/單車徑為香港主水平基準以上8.91至9.25米。
 5. 毗鄰建築物的一段緊急車輛通道為香港主水平基準以上8.85米。

CROSS-SECTION PLAN OF BUILDING IN THE DEVELOPMENT

發展項目中的建築物的橫截面圖

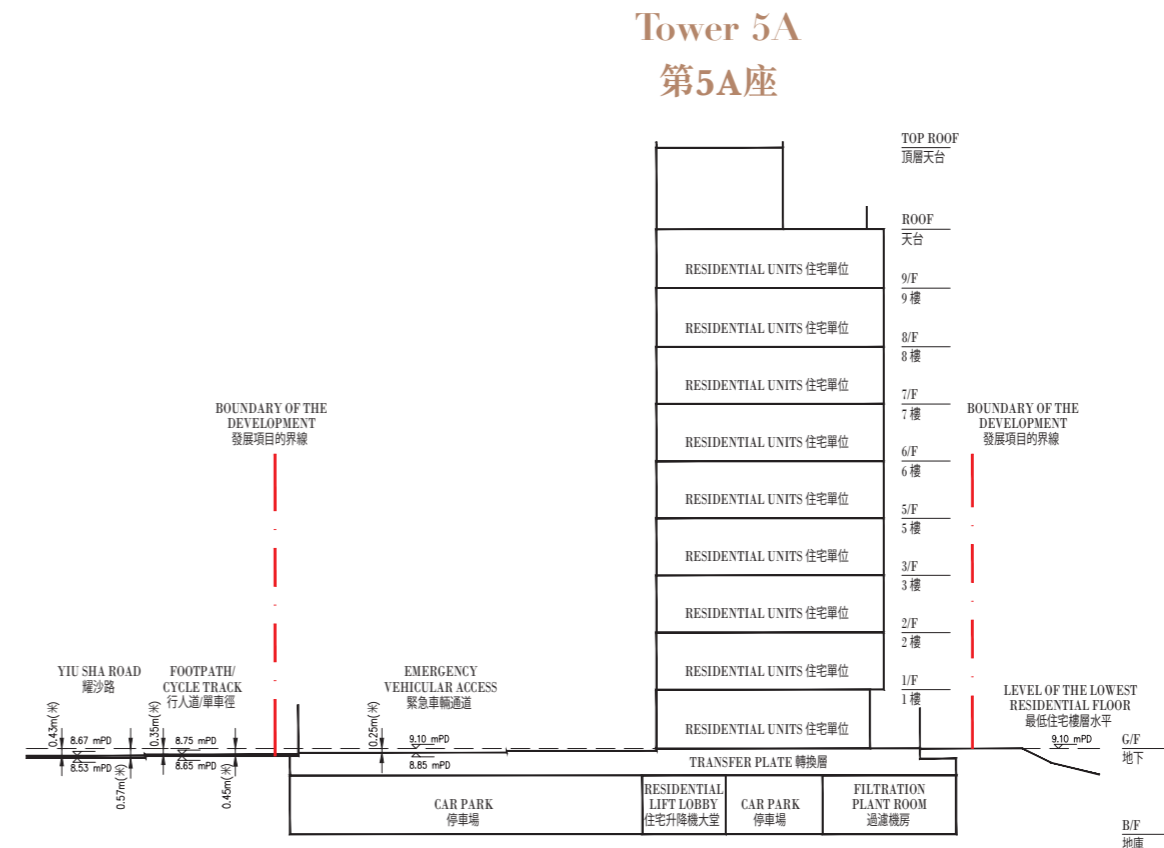
Cross - Section C

橫截面 C

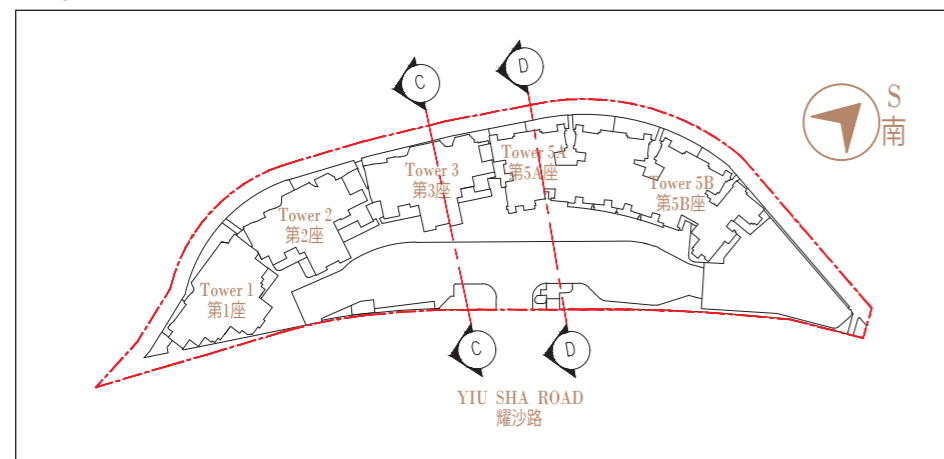


Cross - Section D

橫截面 D



Key Plan 指示圖



Cross - Section C 橫截面 C

1. --- Dotted line denotes the level of the lowest residential floor.
2. ▽ denotes height in metres above Hong Kong Principal Datum,
3. The part of Yiu Sha Road adjacent to the building is 8.67 to 8.85 metres above Hong Kong Principal Datum.
4. The part of the footpath/cycle track adjacent to the building is 8.75 to 8.91 metres above Hong Kong Principal Datum.
5. The part of the emergency vehicular access adjacent to the building is 8.85 metres above Hong Kong Principal Datum.

1. --- 虛線為最低住宅樓層水平。
2. ▽代表香港主水平基準以上的高度(米)。
3. 毗鄰建築物的一段耀沙路為香港主水平基準以上8.67至8.85米。
4. 毗鄰建築物的一段行人道/單車徑為香港主水平基準以上8.75至8.91米。
5. 毗鄰建築物的一段緊急車輛通道為香港主水平基準以上8.85米。

Cross - Section D 橫截面 D

1. --- Dotted line denotes the level of the lowest residential floor.
2. ▽ denotes height in metres above Hong Kong Principal Datum,
3. The part of Yiu Sha Road adjacent to the building is 8.53 to 8.67 metres above Hong Kong Principal Datum.
4. The part of the footpath/cycle track adjacent to the building is 8.65 to 8.75 metres above Hong Kong Principal Datum.
5. The part of the emergency vehicular access adjacent to the building is 8.85 metres above Hong Kong Principal Datum.

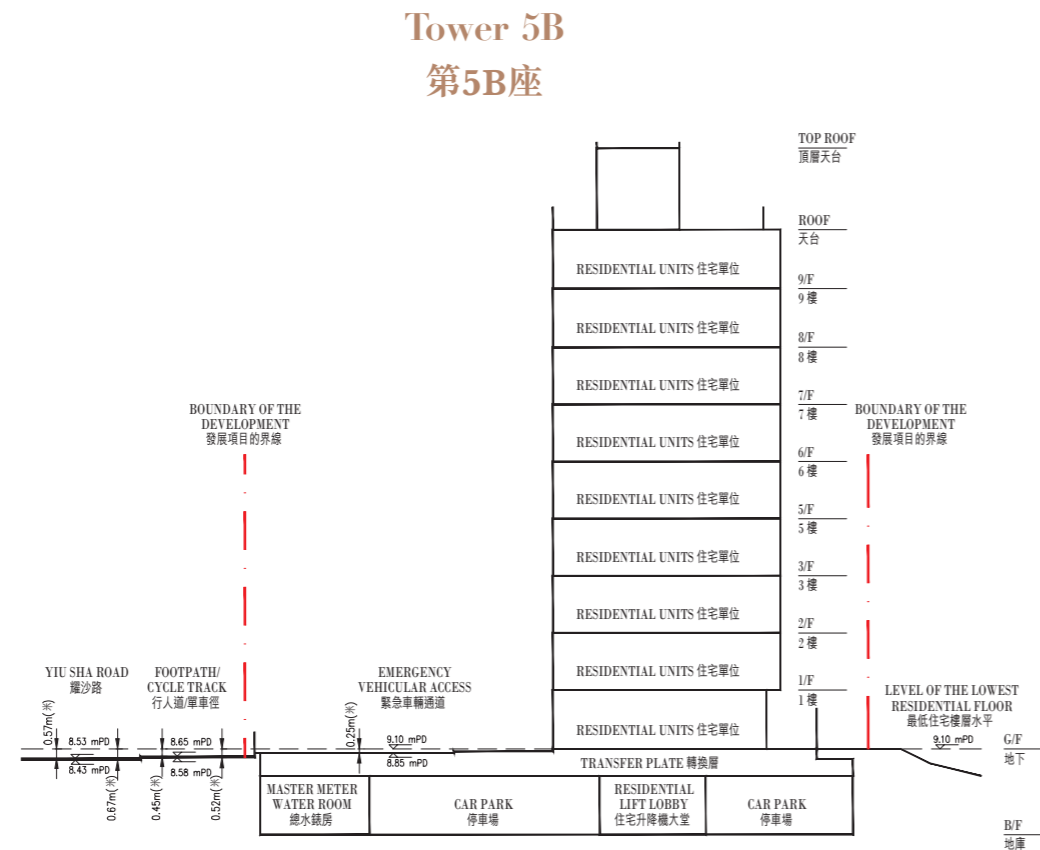
1. --- 虛線為最低住宅樓層水平。
2. ▽代表香港主水平基準以上的高度(米)。
3. 毗鄰建築物的一段耀沙路為香港主水平基準以上8.53至8.67米。
4. 毗鄰建築物的一段行人道/單車徑為香港主水平基準以上8.65至8.75米。
5. 毗鄰建築物的一段緊急車輛通道為香港主水平基準以上8.85米。

CROSS-SECTION PLAN OF BUILDING IN THE DEVELOPMENT

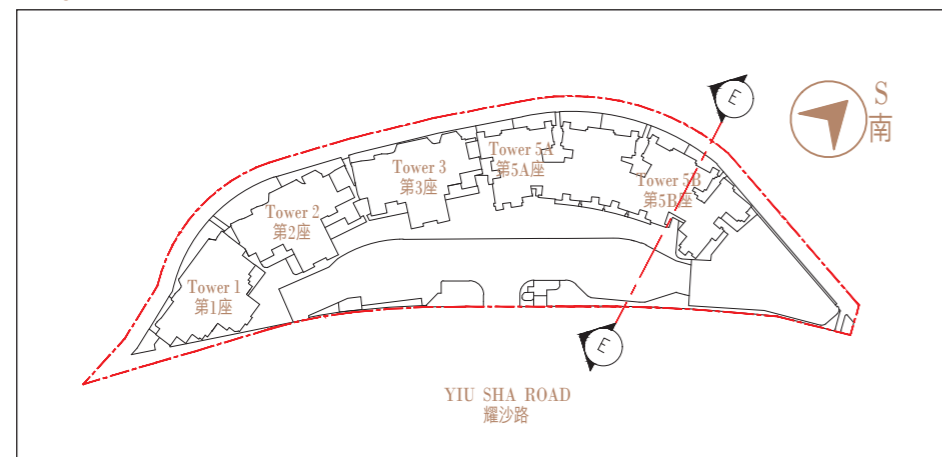
發展項目中的建築物的橫截面圖

Cross - Section E

橫截面 E



Key Plan 指示圖



Cross - Section E 橫截面 E

1. --- Dotted line denotes the level of the lowest residential floor.
2. ▽— denotes height in metres above Hong Kong Principal Datum,
3. The part of Yiu Sha Road adjacent to the building is 8.43 to 8.53 metres above Hong Kong Principal Datum.
4. The part of the footpath/cycle track adjacent to the building is 8.58 to 8.65 metres above Hong Kong Principal Datum.
5. The part of the emergency vehicular access adjacent to the building is 8.85 metres above Hong Kong Principal Datum.

1. --- 虛線為最低住宅樓層水平。
2. ▽—代表香港主水平基準以上的高度（米）。
3. 毗鄰建築物的一段耀沙路為香港主水平基準以上8.43至8.53米。
4. 毗鄰建築物的一段行人道/單車徑為香港主水平基準以上8.58至8.65米。
5. 毗鄰建築物的一段緊急車輛通道為香港主水平基準以上8.85米。