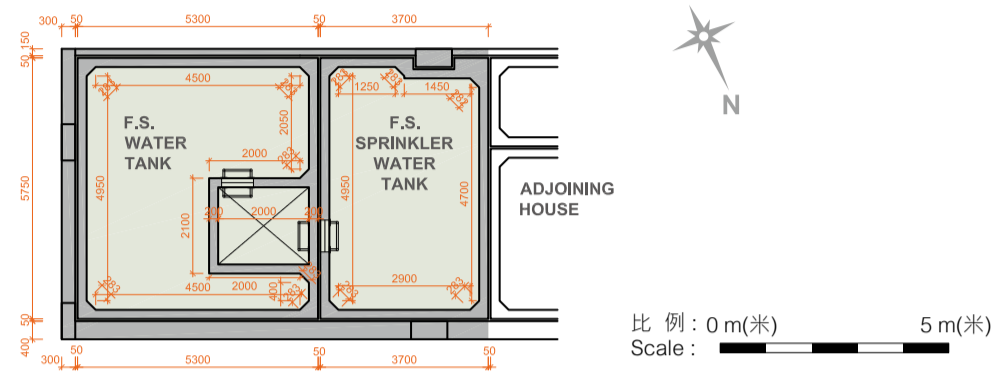
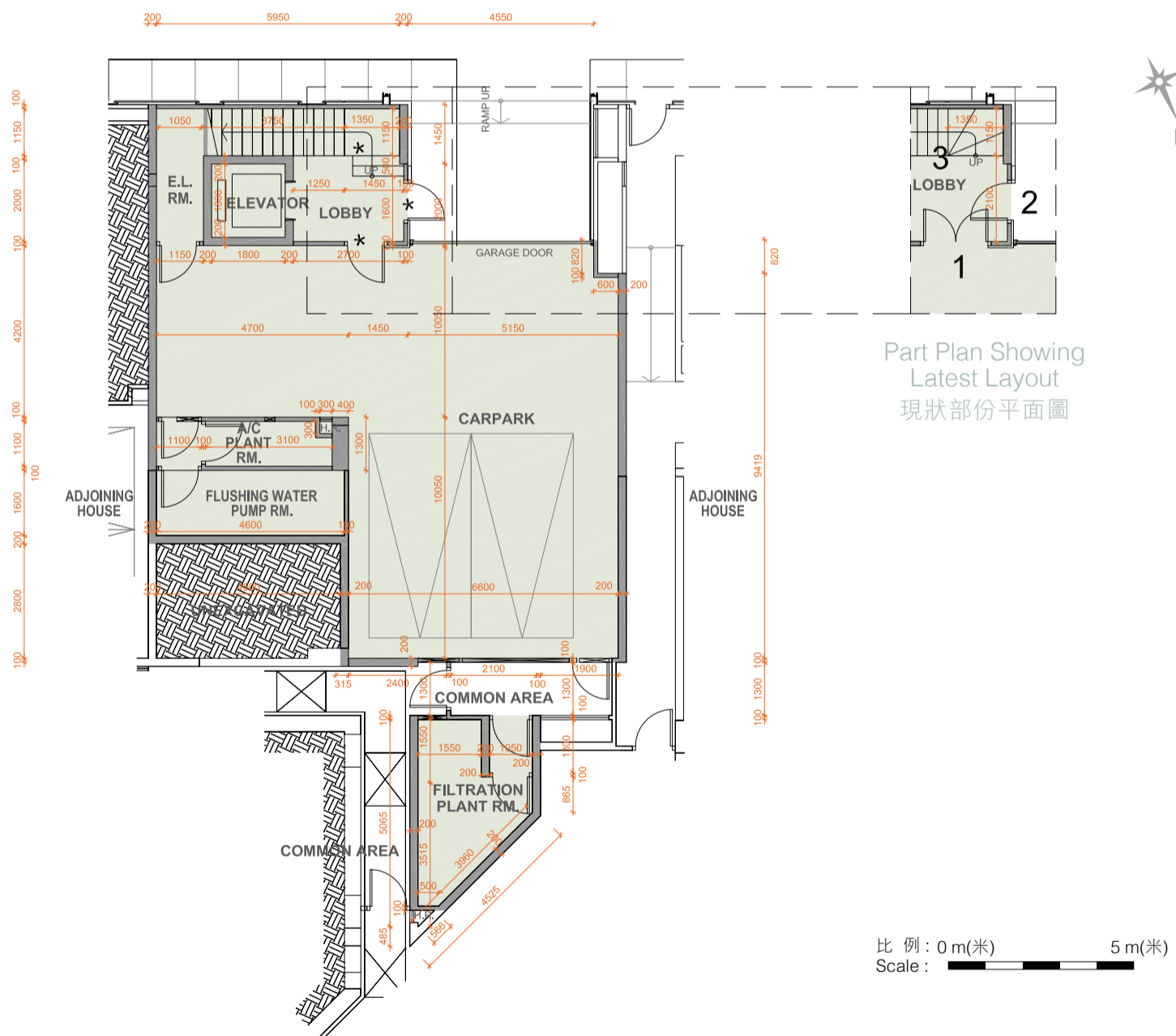


77C Peak Road - 山頂道77C號



Electrical and Mechanical Floor (Above 1/F)
機電層平面圖 (高於一樓)



Lower Ground Floor Plan (Carpark)
地下低層平面圖 (停車場)

* This part of layout has been altered by way of minor works or exempted building works under the Buildings Ordinance after completion of the Development, the latest condition of which is shown on the relevant part plan.

The alteration works are as follows:

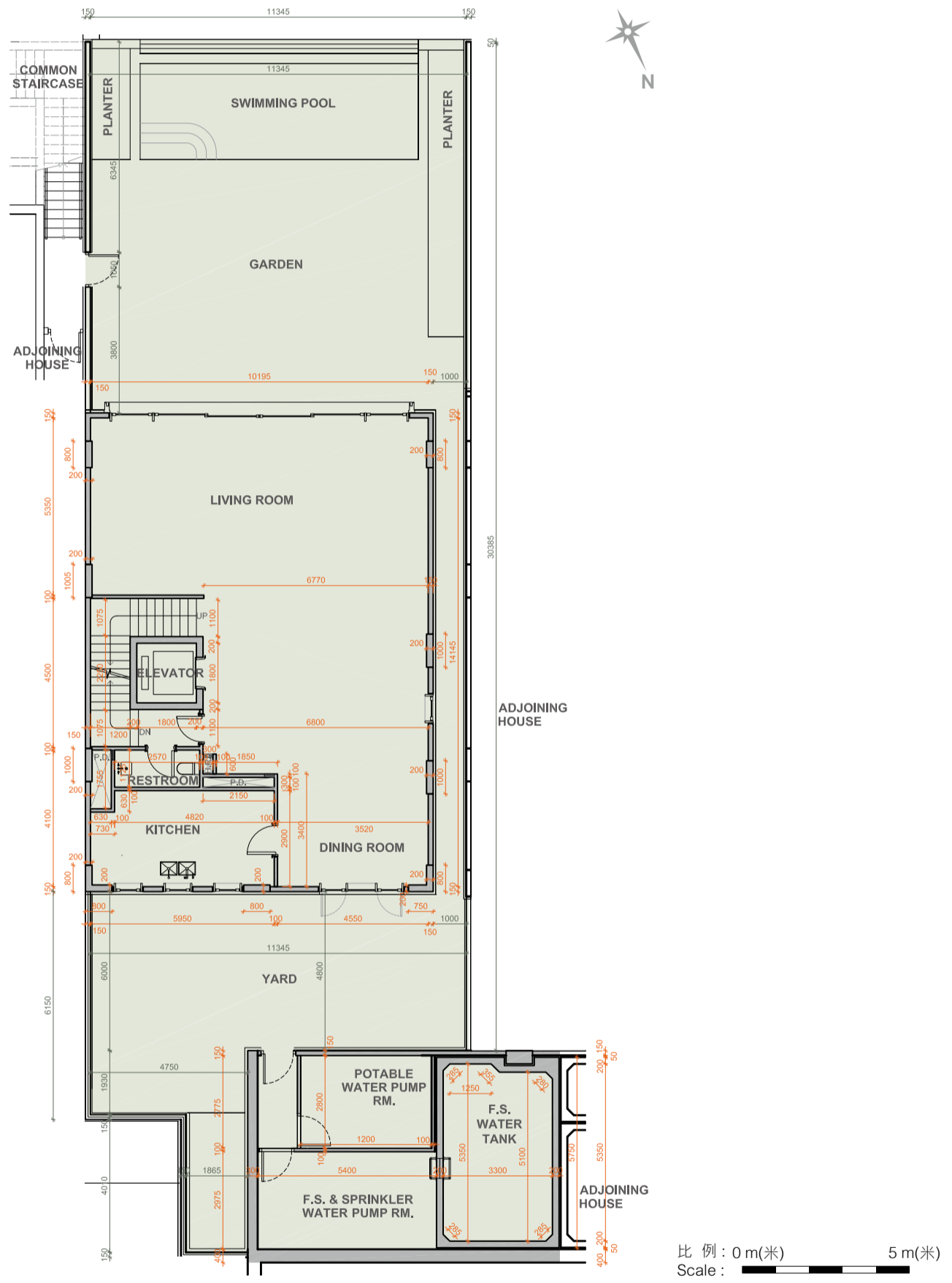
1. Single-leaf door at carpark Lift Lobby has been changed to double-leaf door.
2. Lobby door swing direction has been changed.
3. Staircase has been modified.

* 此部份因在發展項目落成後進行小型工程或獲《建築物條例》豁免的工程而有所改動，現狀請參考有關部份平面圖。

該等改動如下：

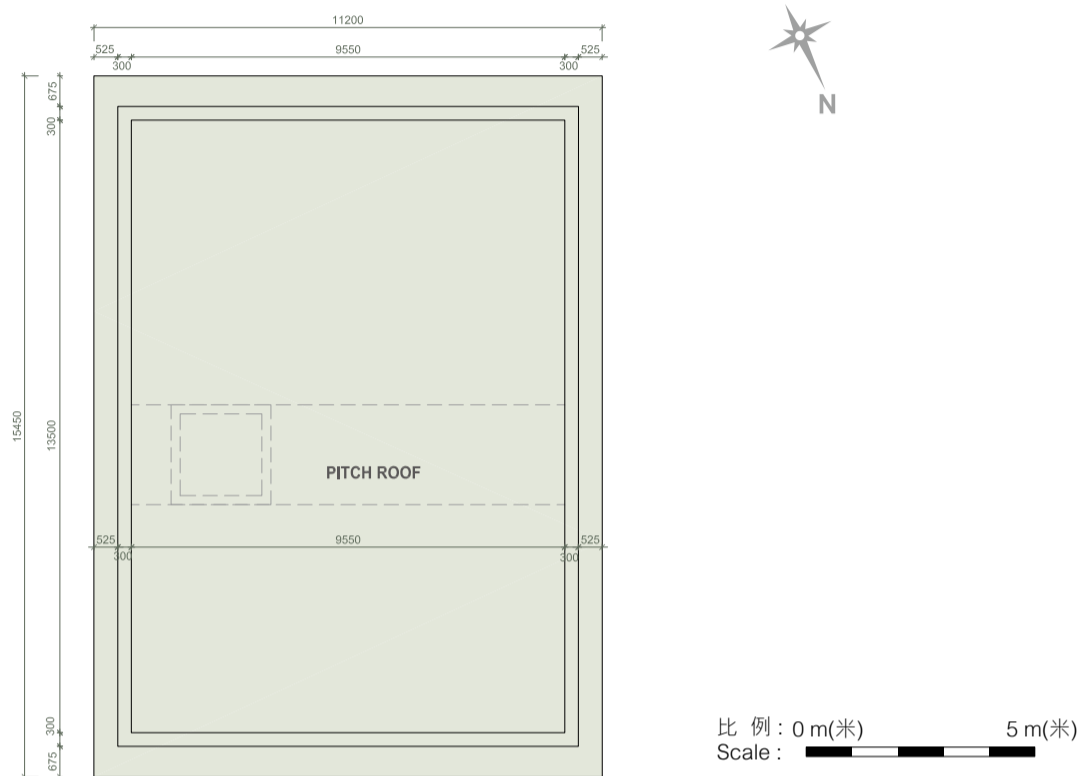
1. 停車場升降機大堂的單扇門更改為雙扇門。
2. 大堂擺門方向改動。
3. 樓梯改動。

77C Peak Road - 山頂道77C號



Ground Floor Plan 地下平面圖

77C Peak Road - 山頂道77C號



Roof Floor Plan 天台平面圖

Notes :

- The internal areas of the residential properties on the upper floors will generally be slightly larger than those on the lower floors because of the reducing thickness of the structural walls on the upper floors.
- The dimensions in the floor plans are all structural dimensions in millimetre.

備註：

- 因住宅物業的較高樓層的結構牆的厚度遞減，較高樓層的內部面積，一般比較低樓層的內部面積稍大。
- 樓面平面圖所列之尺寸為以毫米標示之建築結構尺寸。

| 77C Peak Road - 山頂道77C號 | E&M/F 機電層 | Lower Ground Floor 地下低層 | Ground Floor 地下 | First Floor 一樓 | Second Floor 二樓 | Roof 天台 |
|-------------------------------------------------------------------------------------------------------------------|--------------|-------------------------------|-----------------------|---------------------------------|--------------------|------------|
| The floor-to-floor height of the residential property (mm) 住宅物業的層與層之間的高度(毫米) | 5855 | 4750 | 4450, 4500 | 3300, 3450, 3500, 3550 | 3500 - 4500 | - |
| The thickness of the floor slabs (excluding plaster) of the residential property (mm) 住宅物業的樓板(不包括灰泥)的厚度(毫米) | 200 | 150, 175 | 150, 175, 225 | 150, 225 | 100, 150, 175 | - |