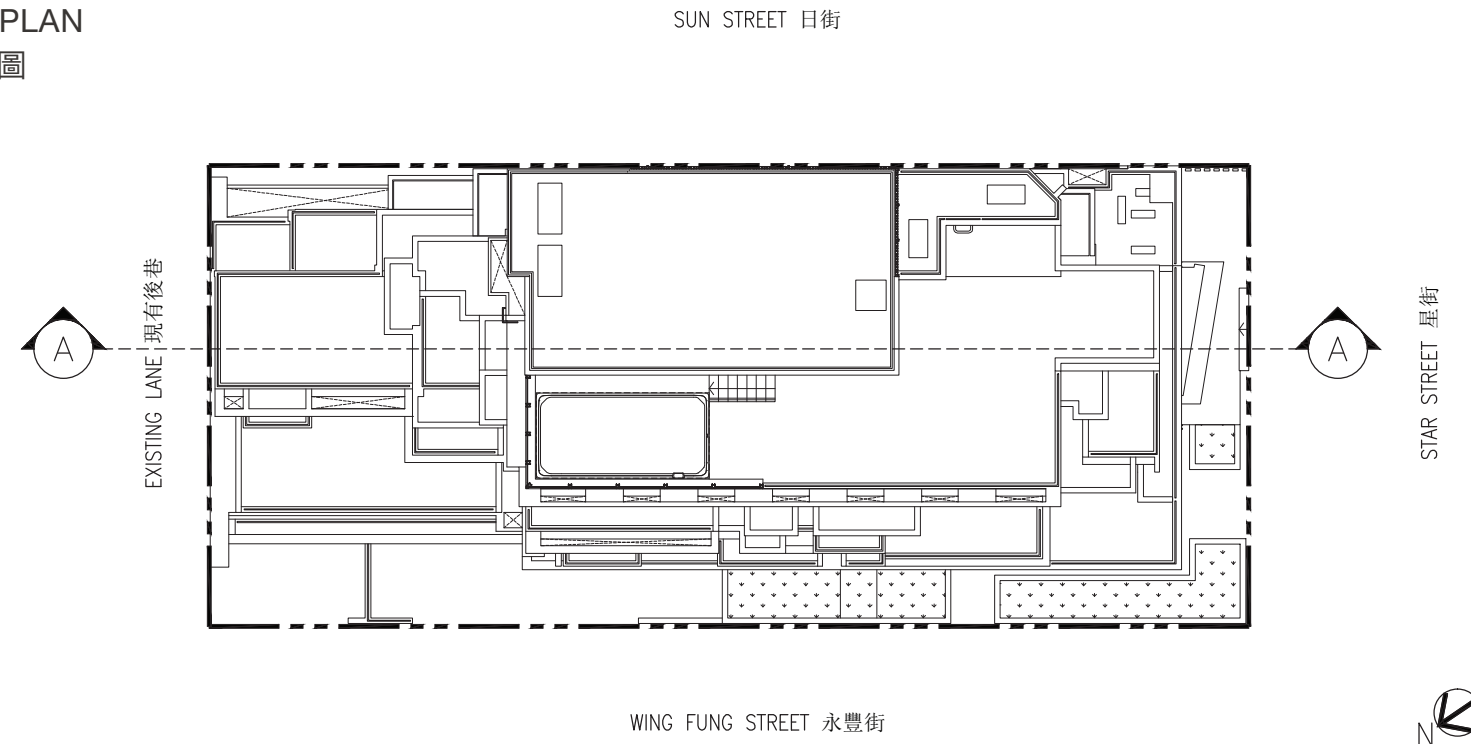


CROSS-SECTION PLAN OF BUILDING IN THE DEVELOPMENT

發展項目中的建築物的橫截面圖

KEY PLAN 指示圖



LEGEND 圖例

- LMR – Lift Machine Room 升降機機房
- BTP – Bottom of Transfer Plate 轉換層的底部
- E&M Room – Electrical & Mechanical Room 機電房

1. The part of Star Street adjacent to the building is 14.800 to 15.980 metres above Hong Kong Principal Datum (mPD).
2. The part of the existing lane adjacent to the building is 10.790 metres above Hong Kong Principal Datum (mPD).
3. The level of the lowest residential floor of the Development is 33.150 metres above Hong Kong Principal Datum (mPD).

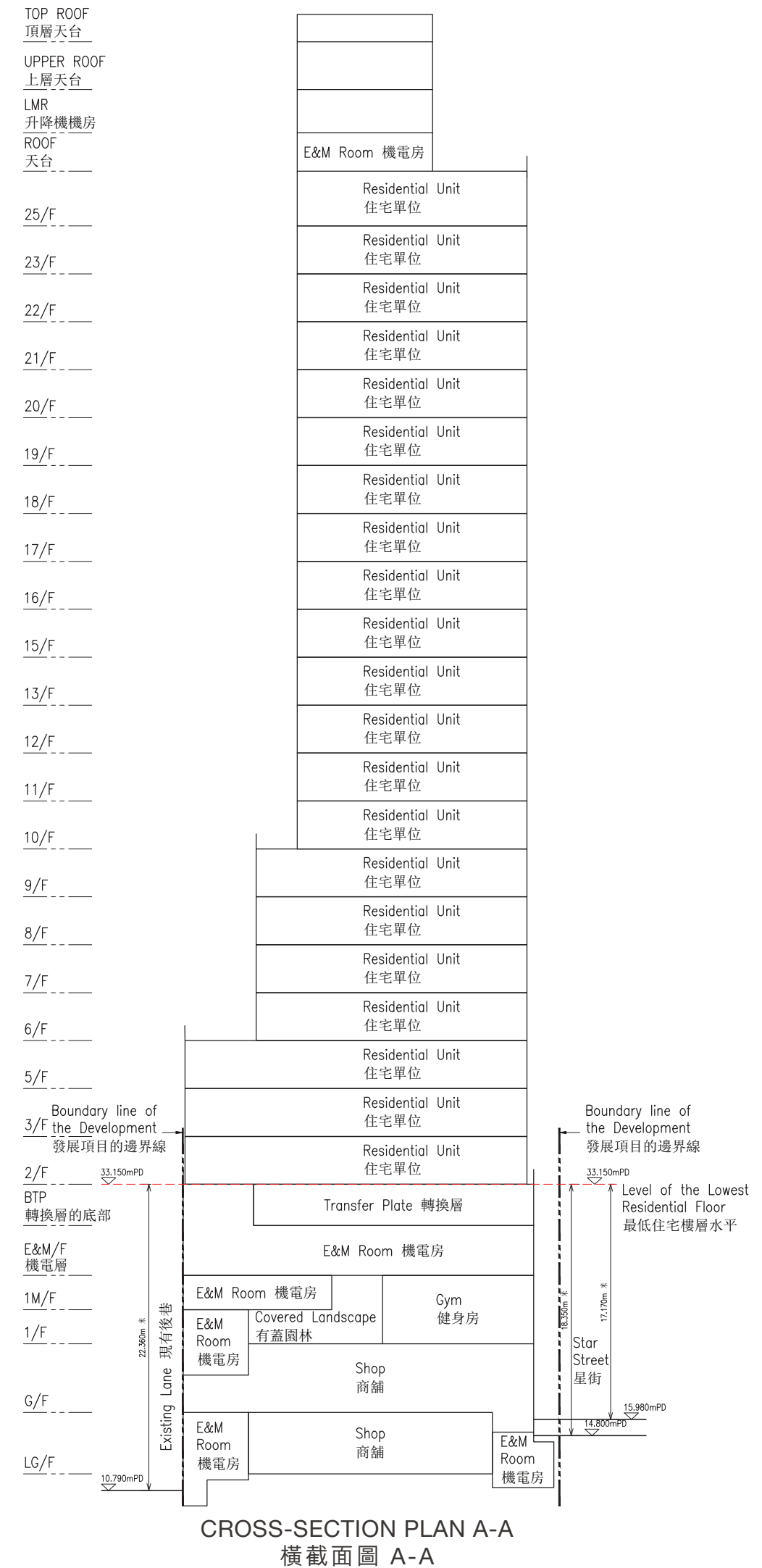
1. 毗鄰建築物的一段星街為香港主水平基準以上約14.800米至15.980米。
2. 毗鄰建築物的一段現有後巷為香港主水平基準以上10.790米。
3. 發展項目之最低住宅樓層水平為香港主水平基準以上33.150米。

Notes:

1. ▽ denotes height (in metres) above Hong Kong Principal Datum.
2. The Vendor advises prospective purchasers to conduct on-site visit for a better understanding of the Development, its surrounding environment and the public facilities nearby.

附註：

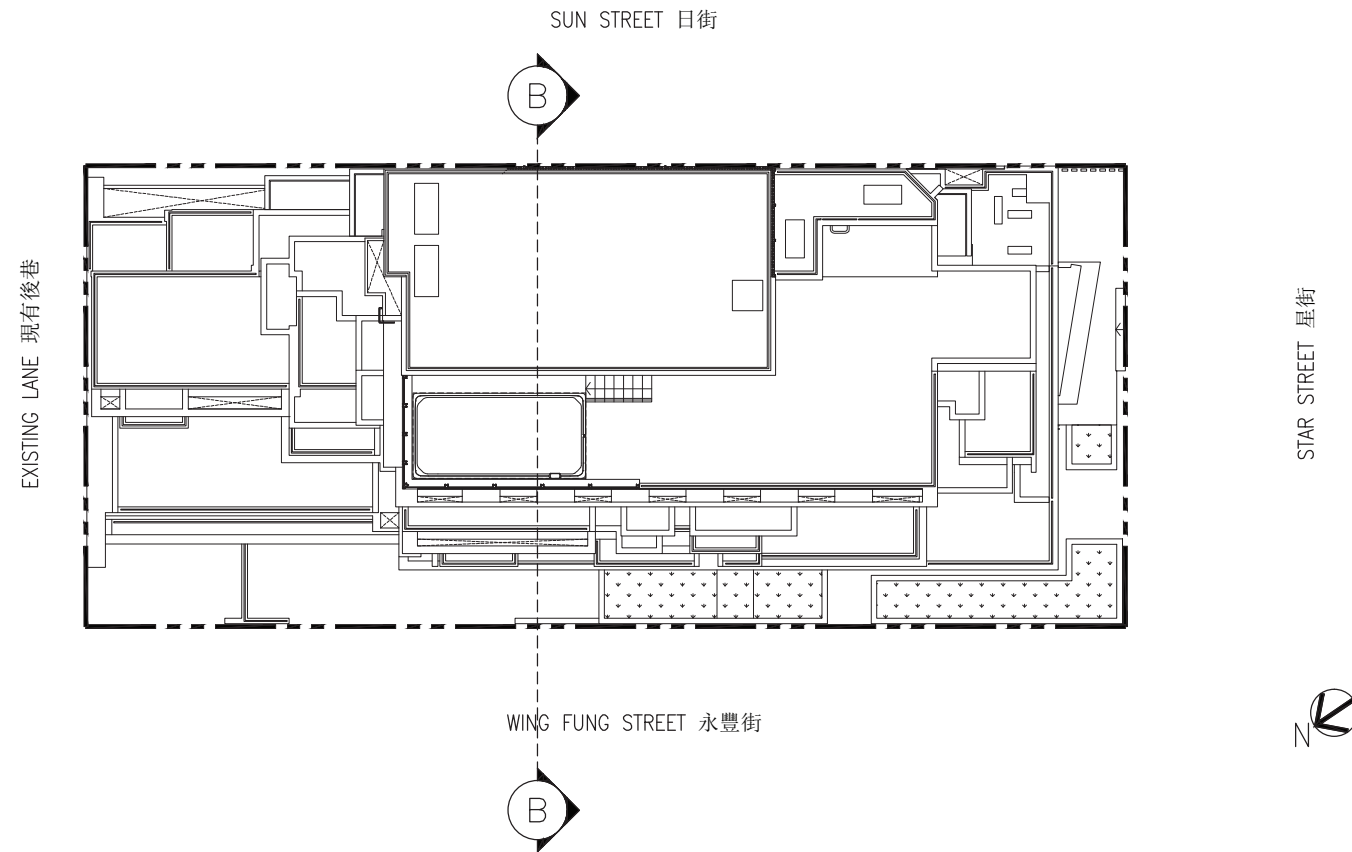
1. ▽ 為香港主水平基準以上高度（米）。
2. 賣方建議準買方到該發展項目作實地考察，以獲取對該發展項目及周圍地區的公共設施及環境較佳的了解。



CROSS-SECTION PLAN OF BUILDING IN THE DEVELOPMENT

發展項目中的建築物的橫截面圖

KEY PLAN 指示圖



LEGEND 圖例

- LMR – Lift Machine Room 升降機機房
- BTP – Bottom of Transfer Plate 轉換層的底部
- E&M Room – Electrical & Mechanical Room 機電房

1. The part of Wing Fung Street adjacent to the building is 11.110 to 14.040 metres above Hong Kong Principal Datum (mPD).
2. The level of Sun Street adjacent to the building is 16.400 metres above Hong Kong Principal Datum (mPD).
3. The level of the lowest residential floor of the Development is 33.150 metres above Hong Kong Principal Datum (mPD).

1. 毗鄰建築物的一段永豐街為香港主水平基準以上約11.110米至14.040米。
2. 毗鄰建築物的一段日街為香港主水平基準以上16.400米。
3. 發展項目之最低住宅樓層水平為香港主水平基準以上33.150米。

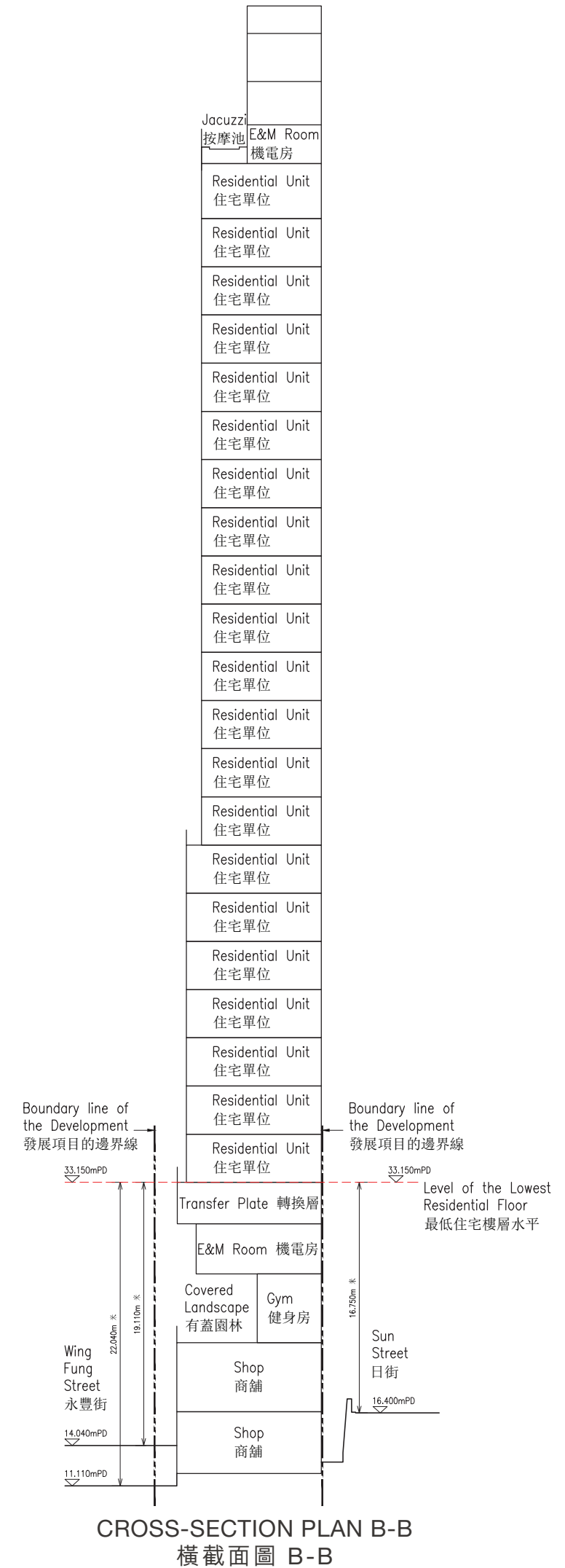
Notes:

1. ∇ denotes height (in metres) above Hong Kong Principal Datum.
2. The Vendor advises prospective purchasers to conduct on-site visit for a better understanding of the Development, its surrounding environment and the public facilities nearby.

附註：

1. ∇ 為香港主水平基準以上高度（米）。
2. 賣方建議準買方到該發展項目作實地考察，以獲取對該發展項目及周圍地區的公共設施及環境較佳的了解。

- TOP ROOF 頂層天台
- UPPER ROOF 上層天台
- LMR 升降機機房
- ROOF 天台
- 25/F
- 23/F
- 22/F
- 21/F
- 20/F
- 19/F
- 18/F
- 17/F
- 16/F
- 15/F
- 13/F
- 12/F
- 11/F
- 10/F
- 9/F
- 8/F
- 7/F
- 6/F
- 5/F
- 3/F
- 2/F
- BTP 轉換層的底部
- E&M/F 機電層
- 1M/F
- 1/F
- G/F
- LG/F



CROSS-SECTION PLAN B-B
橫截面圖 B-B