

# 10 發展項目的住宅物業的樓面平面圖 FLOOR PLANS OF RESIDENTIAL PROPERTIES IN THE DEVELOPMENT

在本頁上之備註和圖例適用於全部的「發展項目的住宅物業的樓面平面圖」頁數。

THE REMARKS AND LEGENDS ON THIS PAGE APPLY TO ALL PAGES OF "FLOOR PLANS OF RESIDENTIAL PROPERTIES IN THE DEVELOPMENT".

## 樓面平面圖圖例

### LEGENDS OF THE FLOOR PLANS

A/C PLATFORM = Air-conditioner Platform 冷氣機平台

A/C PLINTH = Air-conditioner Plinth 冷氣機台

ALUM. A/C SCREEN = Aluminium Air-conditioner Screen 鋁冷氣格柵

BAL. = Balcony 露台

B.R. = Bedroom 睡房

B. = Bathroom 浴室

DN = Down 落

DOGHOUSE = Mechanical & Electrical Services Duct connecting to the Floor Below 連接下層的機電設施管道

E.M.R. = Electric Meter Room 電錶房

F.H. = Fire Hydrant 消防栓

H.R. = Hose Reel 消防喉轆

LIV./DIN. = Living Room / Dining Room 客廳/飯廳

M.B. = Master Bathroom 主人浴室

M.B.R. = Master Bedroom 主人睡房

P.D. = Pipe Duct 管道

STORAGE REFUSE = Refuse Storage and Material Recovery Room 垃圾及物料回收室

TOP OF BAL. BELOW = Top of Balcony Below 下層露台之頂蓋

W.M.C. = Water Meter Cabinet 水錶櫃

 = Built-in fittings provided in the flats 隨樓附送嵌入式裝置

備註：

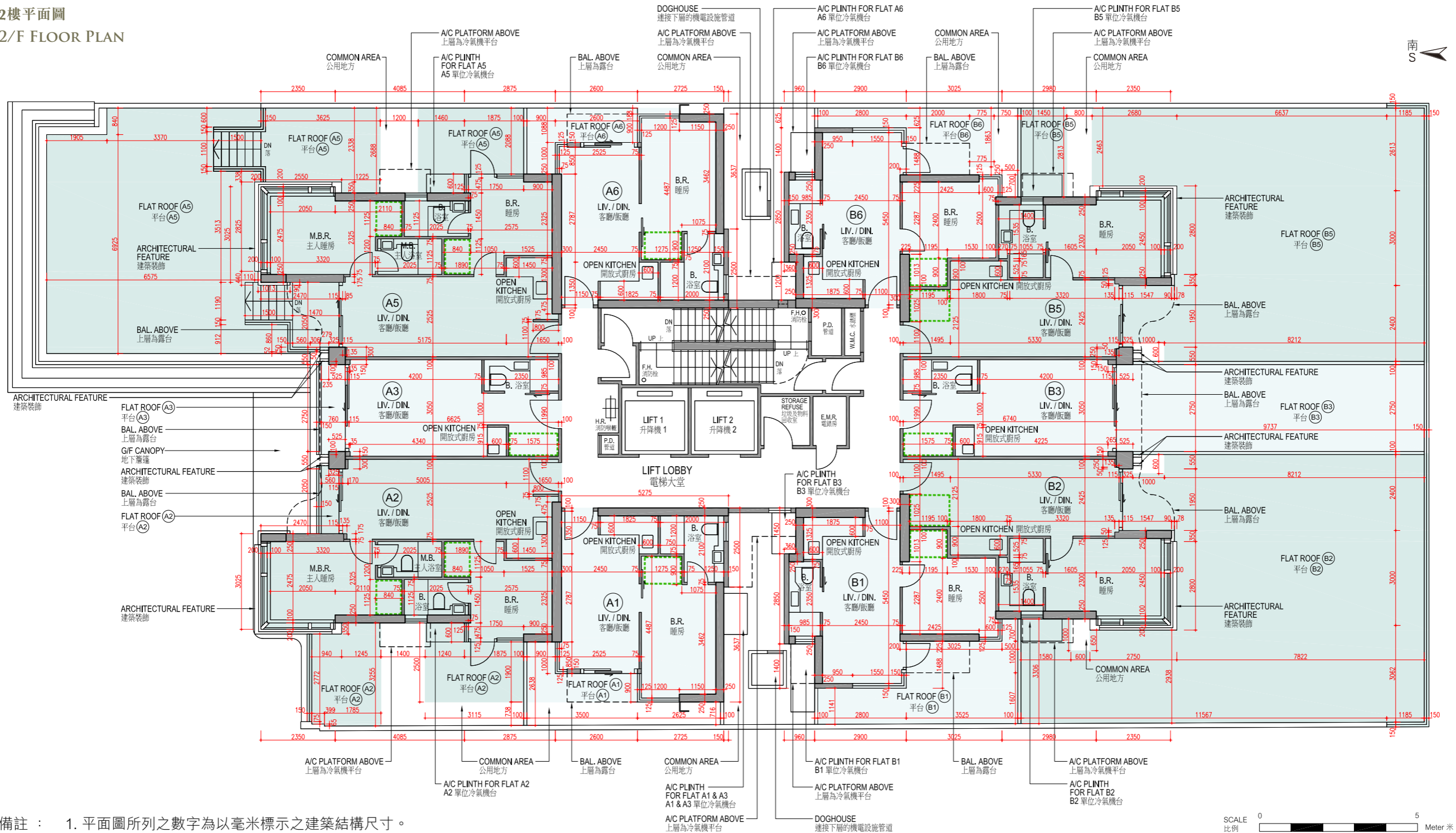
1. 部分住宅物業的露台、平台或外牆或設有外露之公用喉管，或外牆裝飾板內藏之公用喉管。
2. 部分住宅物業內之部分天花或有跌級樓板，用以安裝上層之機電設備或配合上層之結構、建築設計及/或裝修設計上的需要。
3. 部分住宅物業內或設有假陣或假天花用以安裝冷氣喉管及/或其他機電設備。
4. 平面圖所列之數字為以毫米標示之建築結構尺寸。
5. 各住宅物業的樓面平面圖內所展示之裝置及設備的圖標如浴缸、洗手盆、座廁、淋浴間、洗滌盆、櫃(如有)等乃根據最新經批准的建築圖則擬備，其形狀、尺寸、比例或與實際提供的裝置及設備存在差異，僅供示意及參考之用。

Remarks:

1. Common pipes exposed or enclosed in cladding may be located at the balcony, flat roof or external wall of some residential properties.
2. There may be sunken slabs at some parts of the ceiling inside some residential properties for the installation of mechanical and electrical services of the floor above or due to the structural, architectural and/or decoration design requirements of the floor above.
3. There may be ceiling bulkheads or false ceiling inside some residential properties for the installation of air-conditioning conduits and/or other mechanical and electrical services.
4. The dimensions of the floor plans are all structural dimensions in millimeter.
5. Those icons of fittings and fitments shown on the floor plans of residential properties like bathtubs, wash basins, water closets, shower cubicles, sink units, cabinets (if any) etc. are prepared in accordance with the latest approved building plans. Their shapes, dimensions, scales may be differed from the fittings and fitments actually provided and they are for indication and reference only.

# 10 發展項目的住宅物業的樓面平面圖 FLOOR PLANS OF RESIDENTIAL PROPERTIES IN THE DEVELOPMENT

2樓平面圖  
2/F FLOOR PLAN



備註：  
1. 平面圖所列之數字為以毫米標示之建築結構尺寸。  
2. 平台空白位置為供維修大廈設備使用的公用地方。

Notes:  
1. The dimensions of floor plans are all structural dimensions in millimeter.  
2. Blank areas on the flat roof are common areas for building facility maintenance.

# 10 發展項目的住宅物業的樓面平面圖

## FLOOR PLANS OF RESIDENTIAL PROPERTIES IN THE DEVELOPMENT

每個住宅物業 Each Residential Property	樓層 Floor	單位 Flat									
		A1	A2	A3	A5	A6	B1	B2	B3	B5	B6
層與層之間的高度 (毫米) Floor-to-Floor Height (mm)	2 樓 2/F	2700, 2950, 2975	2700, 2950, 2975	2925, 2950, 2975	2700, 2950, 2975	2700, 2950, 2975	2950, 2975	2950, 2975	2700, 2925, 2950, 2975	2700, 2950, 2975	2950, 2975
樓板 (不包括灰泥) 的厚度 (毫米) Thickness of Floor Slab (excluding plaster) (mm)		150	150	150	150	150	150	150	150	150	150

因住宅物業的較高樓層的結構牆的厚度遞減，較高樓層的內部面積，一般比較低樓層的內部面積稍大。

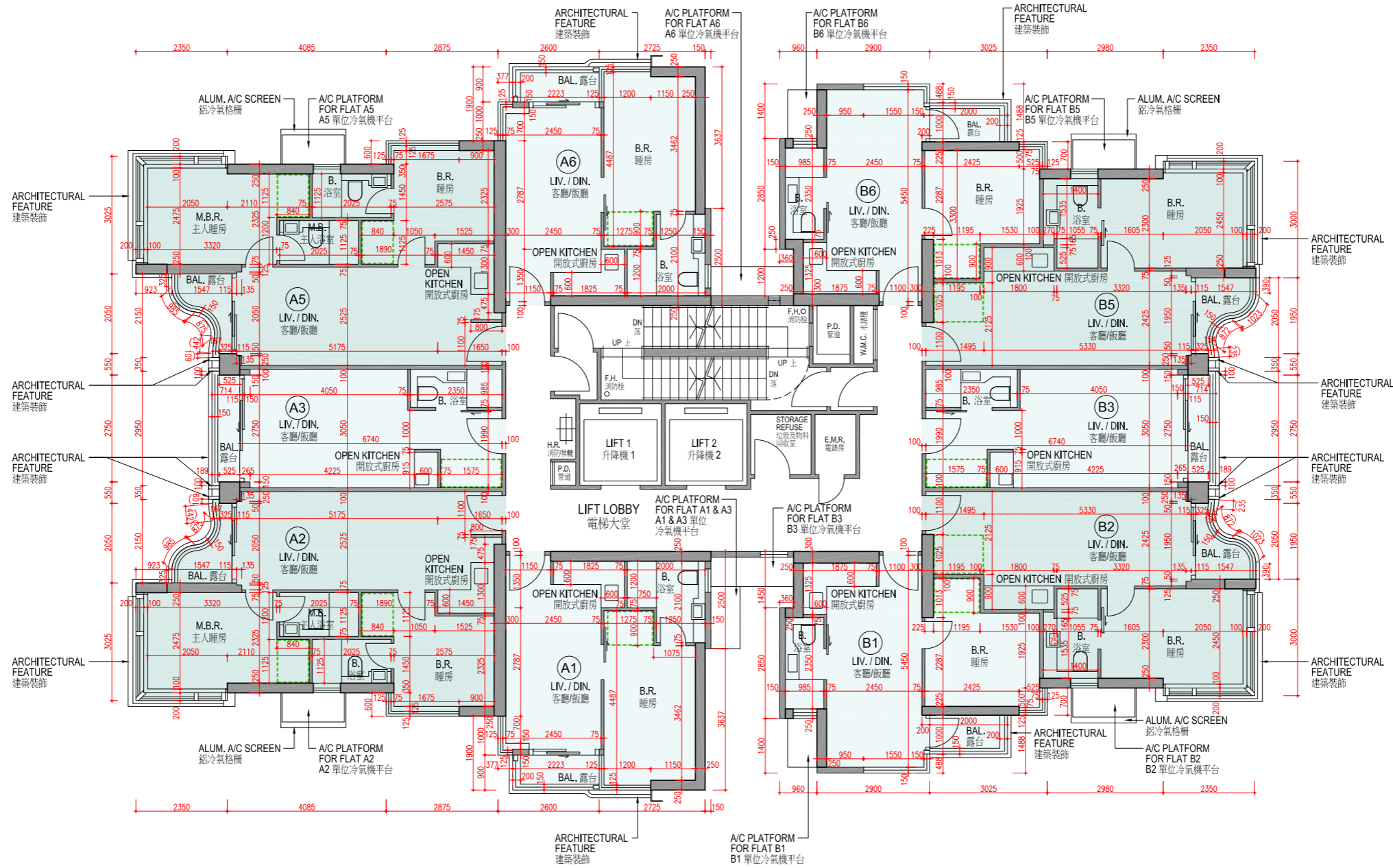
The internal areas of the residential properties on the upper floors will generally be slightly larger than those on the lower floors because of the reducing thickness of the structural walls on the upper floors.

請參閱本售樓說明書第23頁為住宅物業樓面平面圖而設之備註及名詞及簡稱的圖例。

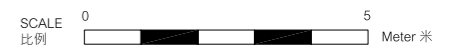
Please refer to page 23 of this sales brochure for the remarks and legends of the terms and abbreviations for the floor plans of residential properties.

# 10 發展項目的住宅物業的樓面平面圖 FLOOR PLANS OF RESIDENTIAL PROPERTIES IN THE DEVELOPMENT

3樓、5樓至12樓平面圖  
3/F, 5/F - 12/F FLOOR PLAN



備註：平面圖所列的數字為以毫米標示之建築結構尺寸。  
Note: The dimensions in floor plans are all structural dimensions in millimeter.



# 10 發展項目的住宅物業的樓面平面圖

## FLOOR PLANS OF RESIDENTIAL PROPERTIES IN THE DEVELOPMENT

每個住宅物業 Each Residential Property	樓層 Floor	單位 Flat									
		A1	A2	A3	A5	A6	B1	B2	B3	B5	B6
層與層之間的高度 (毫米) Floor-to-Floor Height (mm)	3樓、5樓至 11樓 3/F, 5/F - 11/F	2975	2975	2975	2975	2975	2975	2975	2975	2975	2975
	12樓 12/F	2975	2975	2700, 2975	2975	2975	2975	2700, 2975	2700, 2975	2975	2975
樓板 (不包括灰泥) 的厚度 (毫米) Thickness of Floor Slab (excluding plaster) (mm)	3樓、5樓至 12樓 3/F, 5/F - 12/F	150	150	150	150	150	150	150	150	150	150

因住宅物業的較高樓層的結構牆的厚度遞減，較高樓層的內部面積，一般比較低樓層的內部面積稍大。

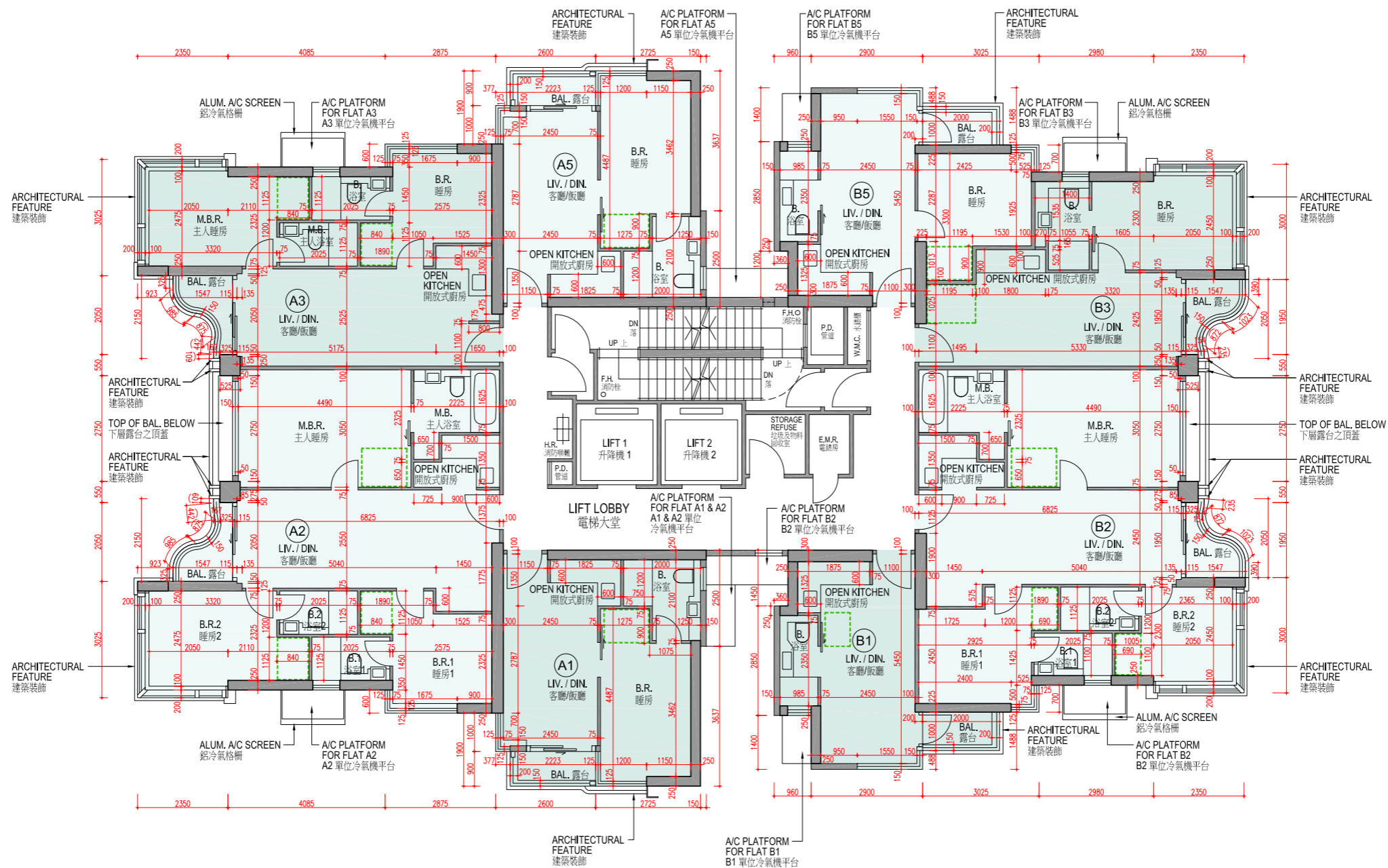
The internal areas of the residential properties on the upper floors will generally be slightly larger than those on the lower floors because of the reducing thickness of the structural walls on the upper floors.

請參閱本售樓說明書第23頁為住宅物業樓面平面圖而設之備註及名詞及簡稱的圖例。

Please refer to page 23 of this sales brochure for the remarks and legends of the terms and abbreviations for the floor plans of residential properties.

# 10 發展項目的住宅物業的樓面平面圖 FLOOR PLANS OF RESIDENTIAL PROPERTIES IN THE DEVELOPMENT

15樓平面圖  
15/F FLOOR PLAN



備註：平面圖所列的數字為以毫米標示之建築結構尺寸。  
Note: The dimensions in floor plans are all structural dimensions in millimeter.



# 10 發展項目的住宅物業的樓面平面圖

## FLOOR PLANS OF RESIDENTIAL PROPERTIES IN THE DEVELOPMENT

每個住宅物業 Each Residential Property	樓層 Floor	單位 Flat							
		A1	A2	A3	A5	B1	B2	B3	B5
層與層之間的高度 (毫米) Floor-to-Floor Height (mm)	15 樓 15/F	2975	2700, 2975	2975	2975	2975	2700, 2975	2975	2975
樓板 (不包括灰泥) 的厚度 (毫米) Thickness of Floor Slab (excluding plaster) (mm)		150	150	150	150	150	150	150	150

因住宅物業的較高樓層的結構牆的厚度遞減，較高樓層的內部面積，一般比較低樓層的內部面積稍大。

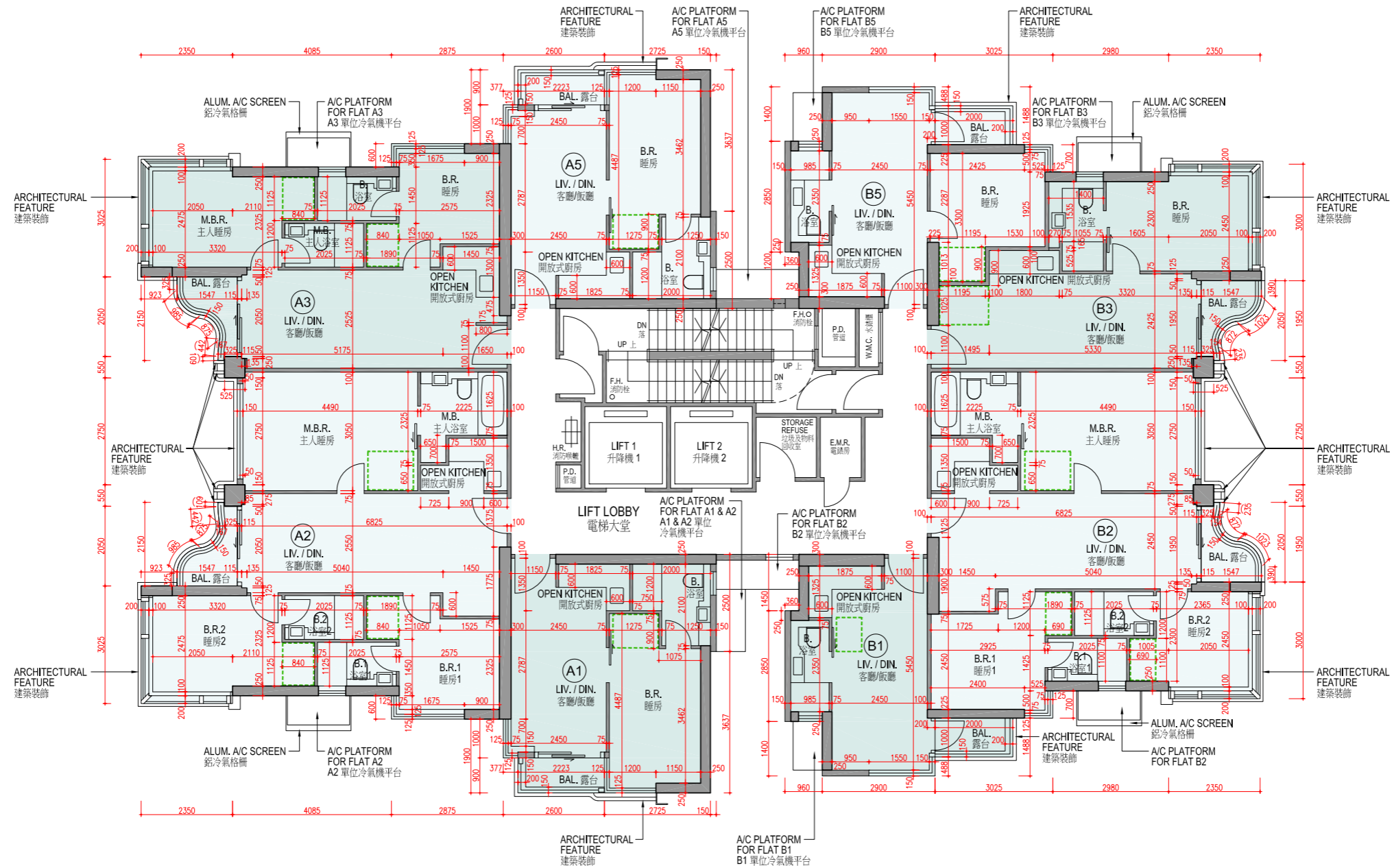
The internal areas of the residential properties on the upper floors will generally be slightly larger than those on the lower floors because of the reducing thickness of the structural walls on the upper floors.

請參閱本售樓說明書第23頁為住宅物業樓面平面圖而設之備註及名詞及簡稱的圖例。

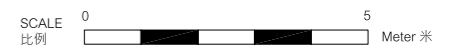
Please refer to page 23 of this sales brochure for the remarks and legends of the terms and abbreviations for the floor plans of residential properties.

# 10 發展項目的住宅物業的樓面平面圖 FLOOR PLANS OF RESIDENTIAL PROPERTIES IN THE DEVELOPMENT

16樓至23樓平面圖  
16/F-23/F FLOOR PLAN



備註：平面圖所列的數字為以毫米標示之建築結構尺寸。  
Note: The dimensions in floor plans are all structural dimensions in millimeter.





# 10 發展項目的住宅物業的樓面平面圖

## FLOOR PLANS OF RESIDENTIAL PROPERTIES IN THE DEVELOPMENT

每個住宅物業 Each Residential Property	樓層 Floor	單位 Flat							
		A1	A2	A3	A5	B1	B2	B3	B5
層與層之間的高度 (毫米) Floor-to-Floor Height (mm)	16 樓至 23 樓	2975	2975	2975	2975	2975	2975	2975	2975
樓板 (不包括灰泥) 的厚度 (毫米) Thickness of Floor Slab (excluding plaster) (mm)	16/F-23/F	150	150	150	150	150	150	150	150

因住宅物業的較高樓層的結構牆的厚度遞減，較高樓層的內部面積，一般比較低樓層的內部面積稍大。

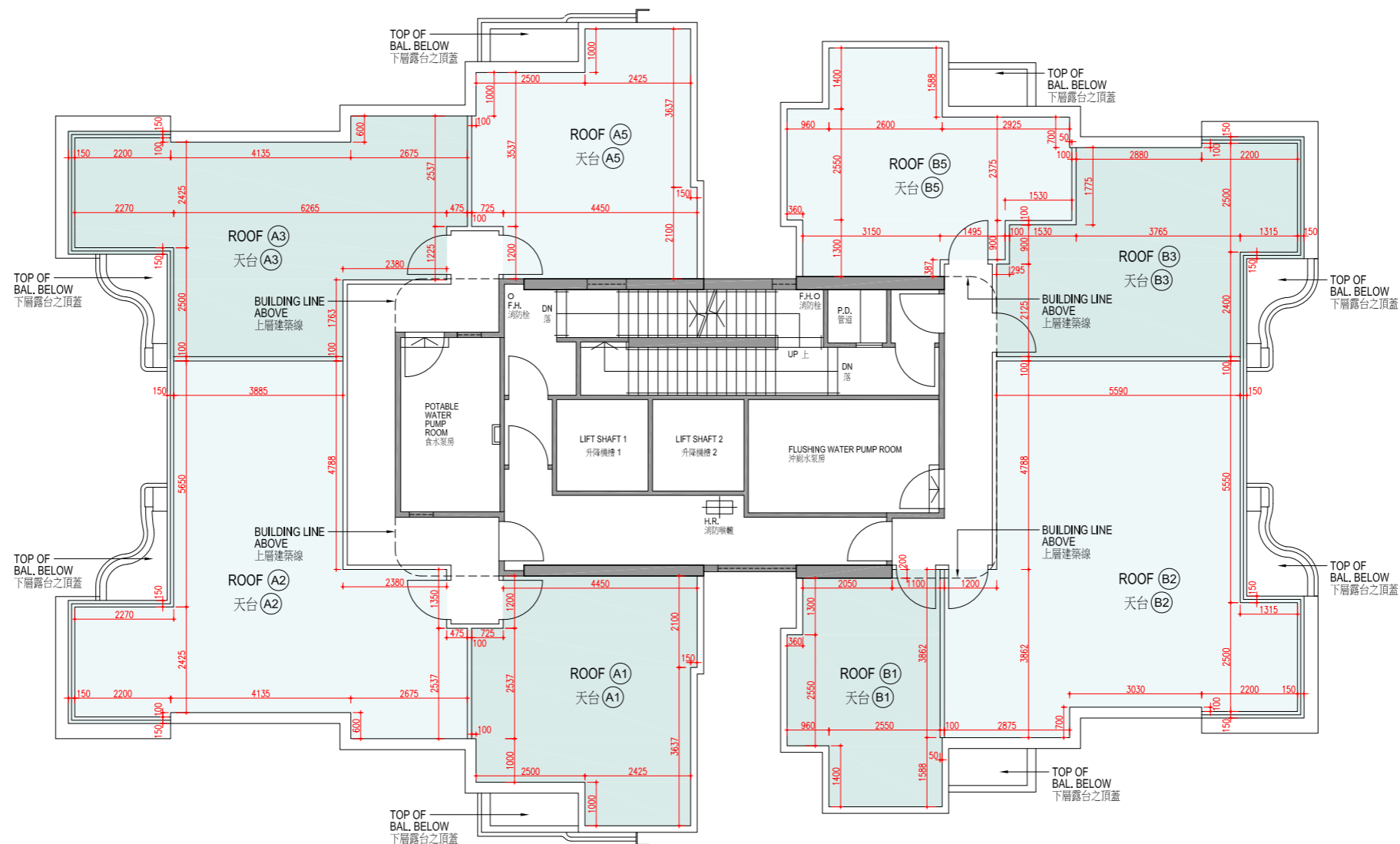
The internal areas of the residential properties on the upper floors will generally be slightly larger than those on the lower floors because of the reducing thickness of the structural walls on the upper floors.

請參閱本售樓說明書第23頁為住宅物業樓面平面圖而設之備註及名詞及簡稱的圖例。

Please refer to page 23 of this sales brochure for the remarks and legends of the terms and abbreviations for the floor plans of residential properties.

# 10 發展項目的住宅物業的樓面平面圖 FLOOR PLANS OF RESIDENTIAL PROPERTIES IN THE DEVELOPMENT

天台平面圖  
ROOF PLAN



備註： 1. 平面圖所列之數字為以毫米標示之建築結構尺寸。  
Notes: 1. The dimensions of floor plans are all structural dimensions in millimeter.



# 10 發展項目的住宅物業的樓面平面圖

## FLOOR PLANS OF RESIDENTIAL PROPERTIES IN THE DEVELOPMENT

每個住宅物業 Each Residential Property	樓層 Floor	單位 Flat						
		A1	A2	A3	A5	B1	B2	B3
層與層之間的高度 (毫米) Floor-to-Floor Height (mm)	天台 Roof	不適用 Not applicable						
樓板 (不包括灰泥) 的厚度 (毫米) Thickness of Floor Slab (excluding plaster) (mm)								

因住宅物業的較高樓層的結構牆的厚度遞減，較高樓層的內部面積，一般比較低樓層的內部面積稍大。

The internal areas of the residential properties on the upper floors will generally be slightly larger than those on the lower floors because of the reducing thickness of the structural walls on the upper floors.

請參閱本售樓說明書第23頁為住宅物業樓面平面圖而設之備註及名詞及簡稱的圖例。

Please refer to page 23 of this sales brochure for the remarks and legends of the terms and abbreviations for the floor plans of residential properties.