

Legend for Floor Plan 平面圖圖例

A.D.	= Air Duct	= 氣槽
A/C Box	= Air-Conditioner Box	= 空調機箱
A/C Units	= Air-Conditioner Units	= 冷氣機組
Bal.	= Balcony	= 露台
Bath	= Bathroom	= 浴室
Bath.	= Bathroom	= 浴室
Bed Rm.	= Bedroom	= 睡房
Conc. Fill	= Concrete Fill	= 混凝土填料
Corr.	= Corridor	= 走廊
Din.	= Dining Room	= 飯廳
Dn	= Down	= 下
E.D.	= Electrical Duct	= 電管道槽
E.M.C.	= Electrical Meter Cabinet	= 電錶櫃
Elec. Meter Room	= Electrical Meter Room	= 電錶房
Ens. 1	= Ensuite 1	= 套房 1
Ens. 2	= Ensuite 2	= 套房 2
Ens. 3	= Ensuite 3	= 套房 3
Ens. 4	= Ensuite 4	= 套房 4
Ens. 5	= Ensuite 5	= 套房 5
Ens. 6	= Ensuite 6	= 套房 6
Ens. Bath 1	= Ensuite Bathroom 1	= 套房浴室 1
Ens. Bath 2	= Ensuite Bathroom 2	= 套房浴室 2
Ens. Bath 3	= Ensuite Bathroom 3	= 套房浴室 3
Ens. Bath 4	= Ensuite Bathroom 4	= 套房浴室 4
Ens. Bath 5	= Ensuite Bathroom 5	= 套房浴室 5
Ens. Bath 6	= Ensuite Bathroom 6	= 套房浴室 6

11 FLOOR PLANS OF RESIDENTIAL PROPERTIES IN THE DEVELOPMENT

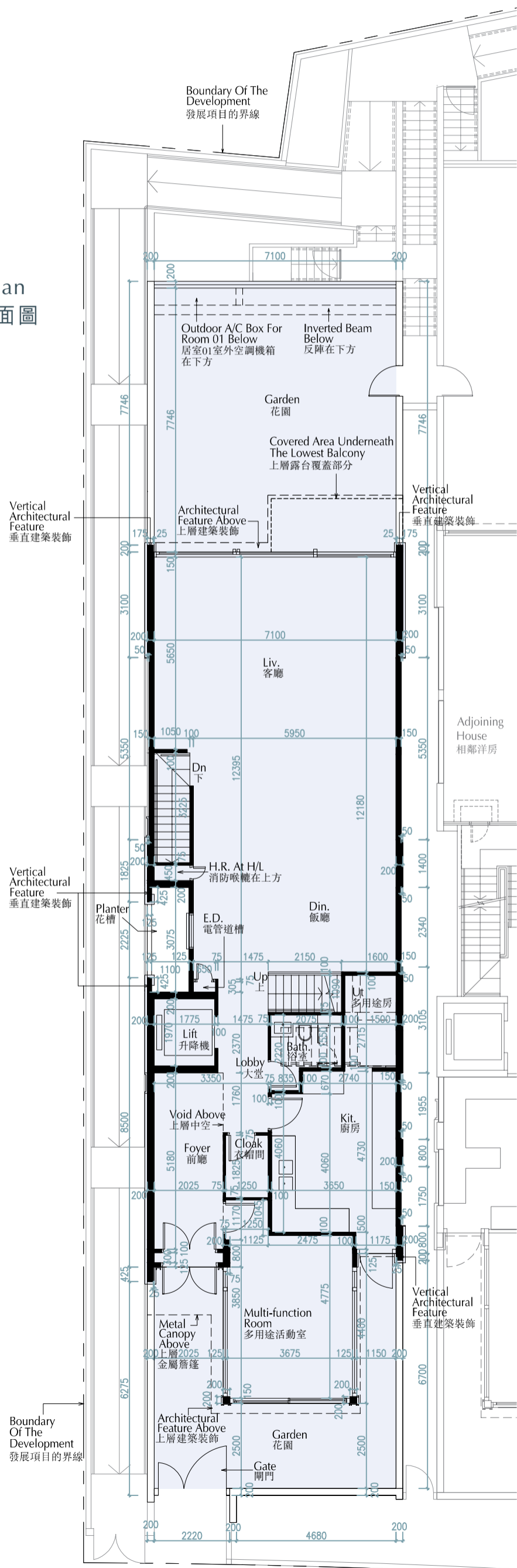
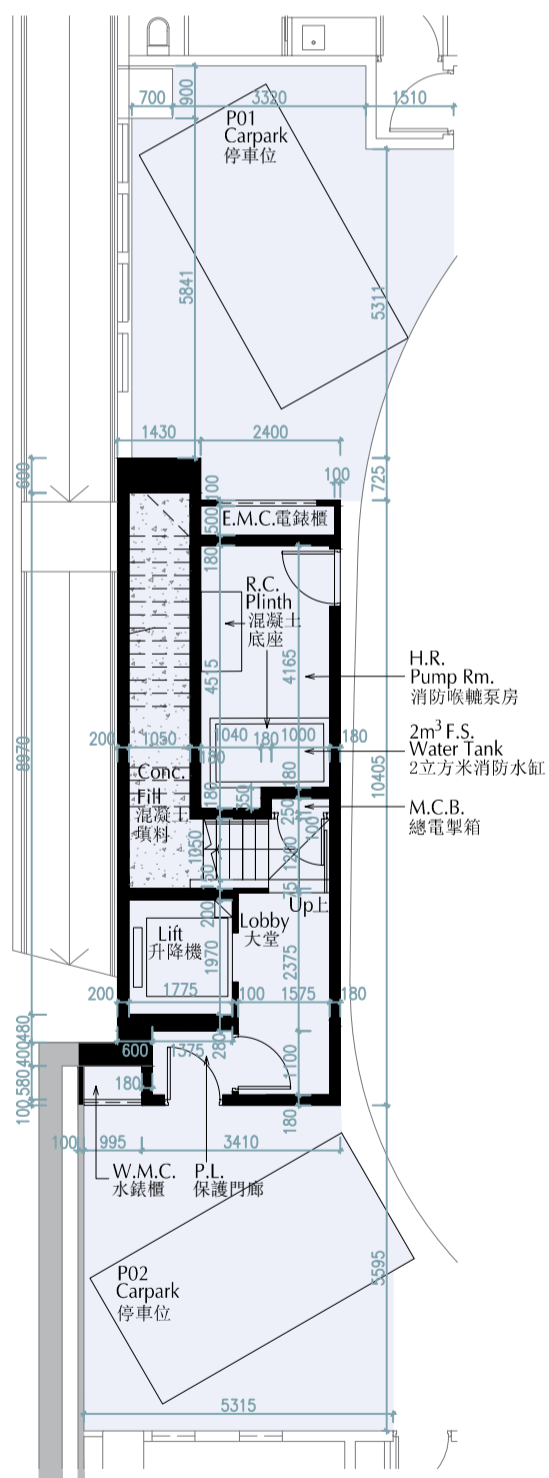
發展項目的住宅物業的樓面平面圖

F.S. Water Tank	= Fire Service Water Tank	= 消防水缸
Fixed FRR Glass Panel	= Fixed Fire Resistance Rating Glass Panel	= 固定防火玻璃
H.R.	= Hose Reel	= 消防喉轆
H.R. At H/L	= Hose Reel At High Level	= 消防喉轆在上方
H.R. Below Ground Floor Slab	= Hose Reel Below Ground Floor Slab	= 消防喉轆在下方
H.R. Pump Rm.	= Hose Reel Pump Room	= 消防喉轆泵房
Kit.	= Kitchen	= 廚房
Lav.	= Lavatory	= 洗手間
Liv.	= Living Room	= 客廳
M. Bath	= Master Bathroom	= 主人浴室
M. Br.	= Master Bedroom	= 主人房
M.C.B.	= Miniature Circuit Breaker Board	= 總電掣箱
Open Kit.	= Open Kitchen	= 開放式廚房
P.D.	= Pipe Duct	= 管道槽
PL.	= Protected Lobby	= 保護門廊
Pow Rm.	= Powder Room	= 化妝間
R.C. Kerb	= Reinforced Concrete Kerb	= 混凝土陣
R.C. Plinth	= Reinforced Concrete Plinth	= 混凝土底座
Store	= Store Room	= 儲物房
St	= Store Room	= 儲物房
Ut	= Utility Room	= 多用途房
W.M.C.	= Water Meter Cabinet	= 水錶櫃

11 FLOOR PLANS OF RESIDENTIAL PROPERTIES IN THE DEVELOPMENT 發展項目的住宅物業的樓面平面圖

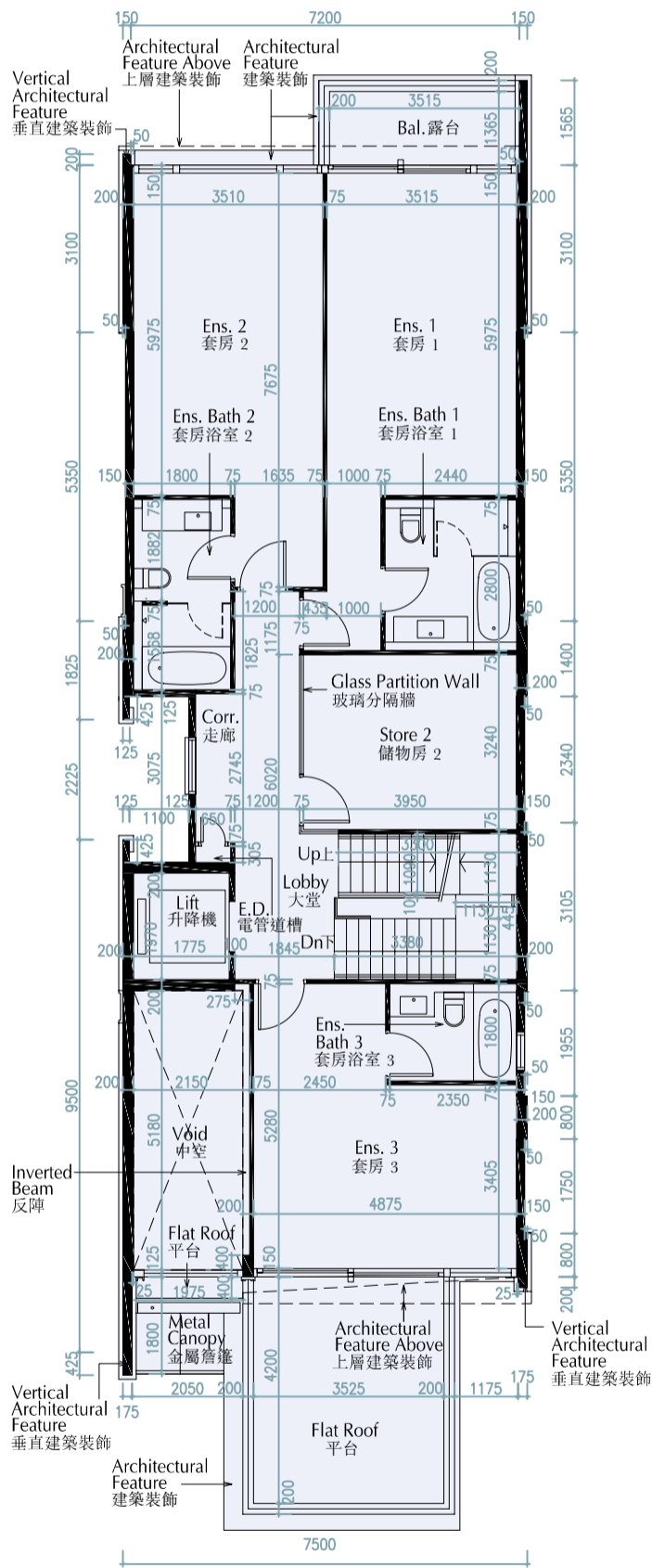
HOUSE 1 Floor Plan 1號洋房樓面平面圖

G/F Plan 地下平面圖

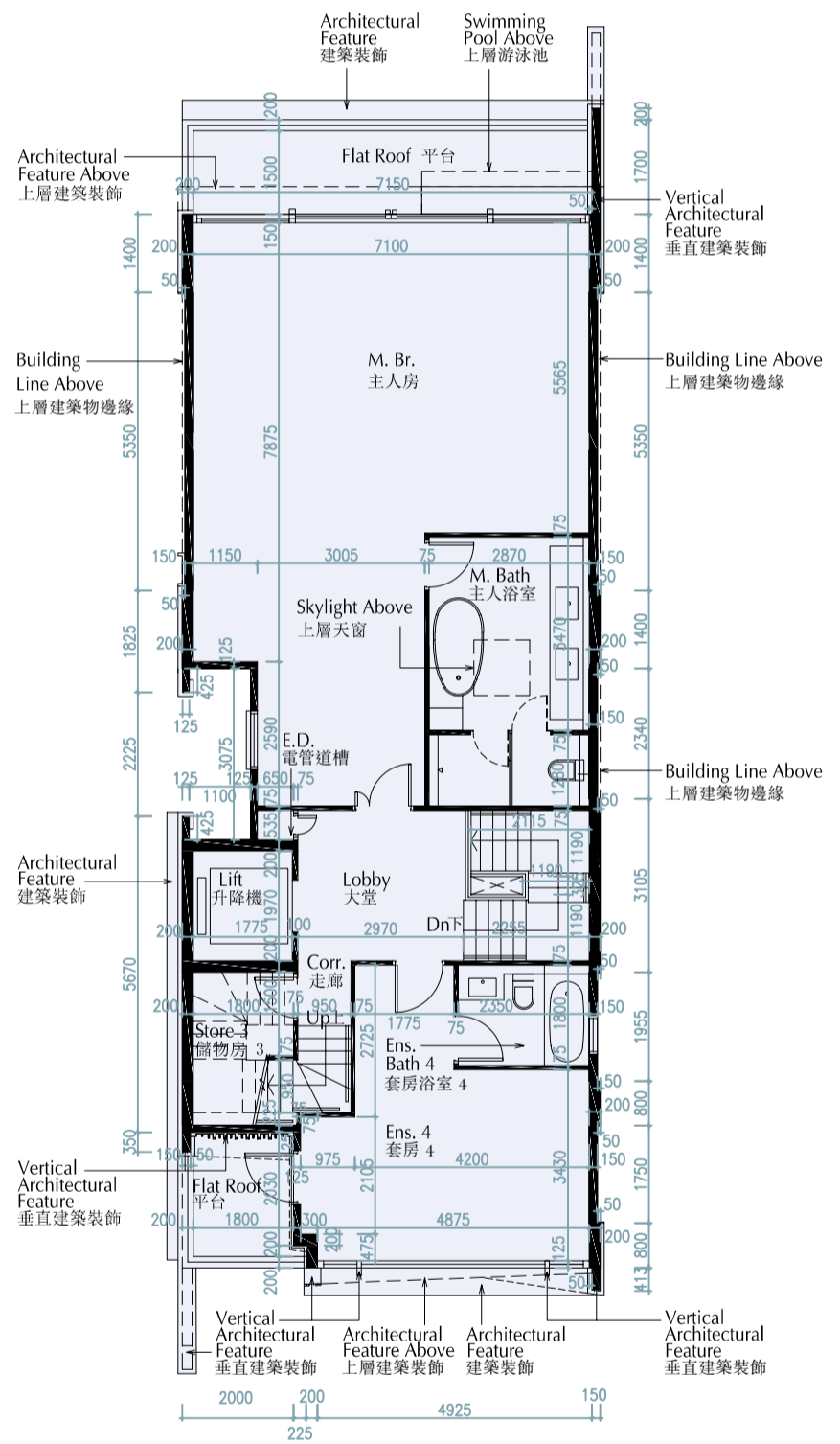


11 FLOOR PLANS OF RESIDENTIAL PROPERTIES IN THE DEVELOPMENT 發展項目的住宅物業的樓面平面圖

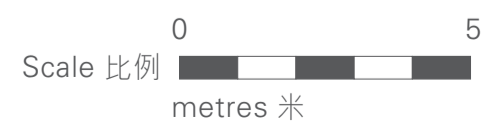
HOUSE 1 Floor Plan 1號洋房樓面平面圖



1/F Plan
1樓平面圖

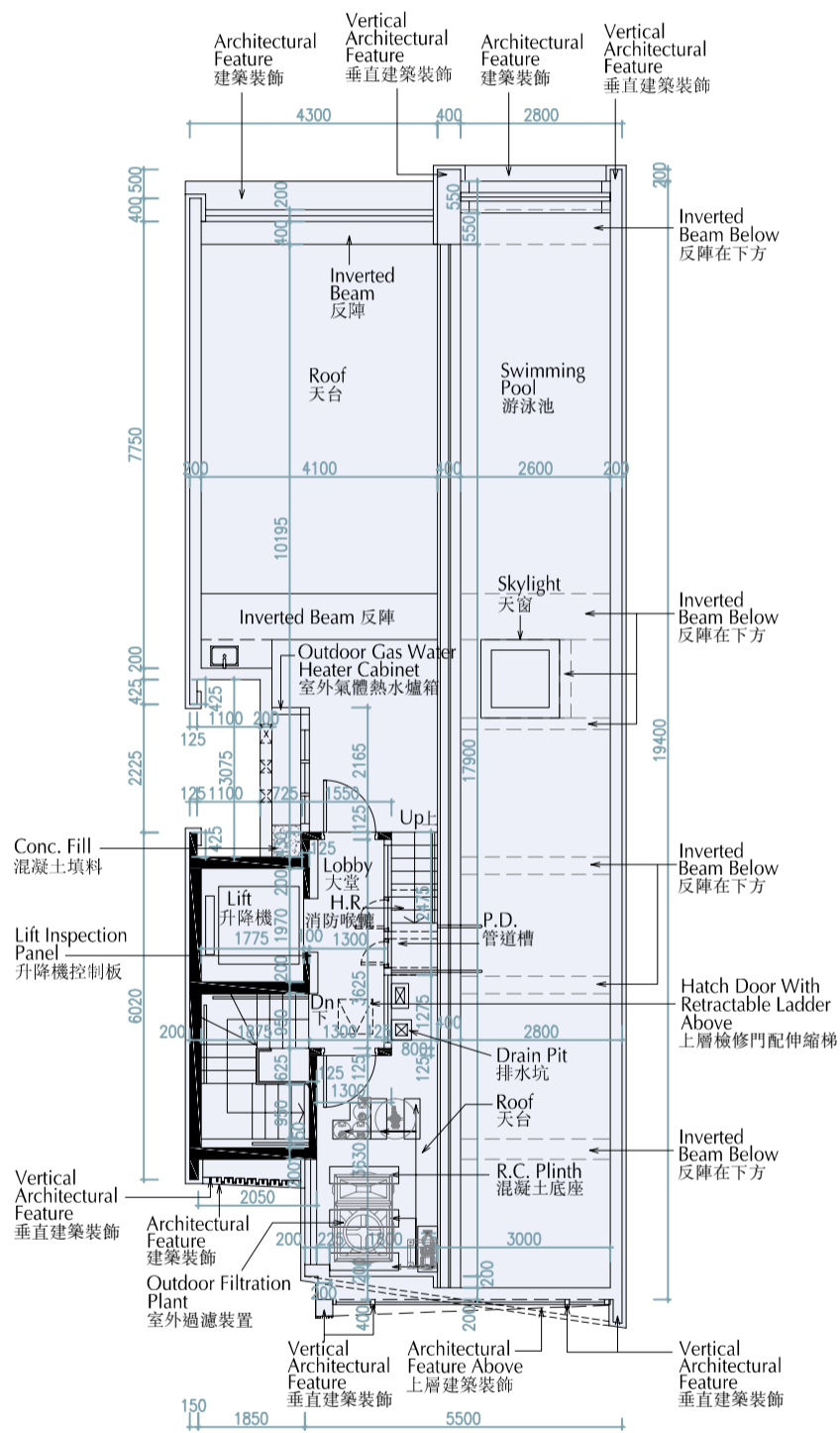


2/F Plan
2樓平面圖

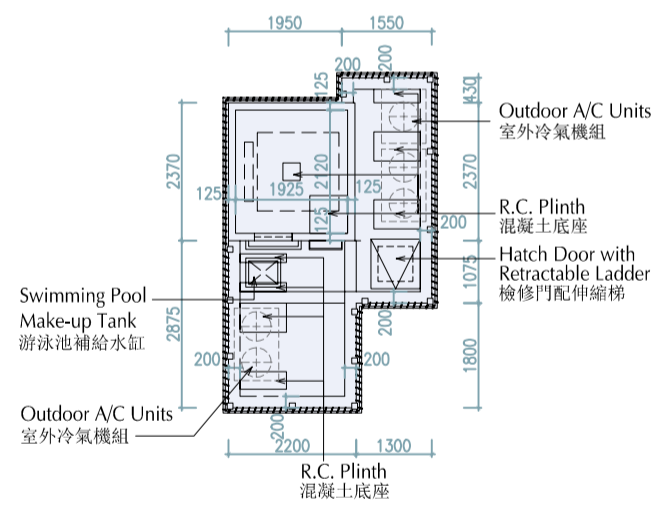


11 FLOOR PLANS OF RESIDENTIAL PROPERTIES IN THE DEVELOPMENT 發展項目的住宅物業的樓面平面圖

HOUSE 1 Floor Plan 1號洋房樓面平面圖



Roof Plan
天台平面圖



Top of Stairhood Plan
梯屋頂層平面圖



11 FLOOR PLANS OF RESIDENTIAL PROPERTIES IN THE DEVELOPMENT

發展項目的住宅物業的樓面平面圖

HOUSE 1 Floor Plan

1號洋房樓面平面圖

Floor 樓層	The thickness of the floor slabs (excluding plaster) of each residential property (mm) 每個住宅物業的樓板(不包括灰泥)的厚度(毫米)	The floor-to-floor height (refers to the height between the top surface of the structural slab of a floor and the top surface of the structural slab of its immediate upper floor) of each residential property (mm) 每個住宅物業的層與層之間的高度(指該樓層之石屎地台面與上一層石屎地台面之高度距離)(毫米)
B/F 地庫	200	5.000
G/F 地下	100, 150, 200, 250	3.675, 4.200, 4.250, 4.300, 4.500, 4.650, 4.850*, 7.200
1/F 1樓	100, 150, 200, 250, 450	3.250, 3.300, 3.500, 3.500*, 3.600*, 3.700*, 3.800*
2/F 2樓	200	3.450, 3.500, 3.700*, 3.750*, 3.775, 4.300*
Roof 天台	175, 200	3.000
Top of Stairhood 梯屋頂層	Not applicable 不適用	Not applicable 不適用

* Inclusive of the thickness of mass concrete fill on sunken slab

* 包括跌級樓板上之混凝土填充層厚度。

Notes:

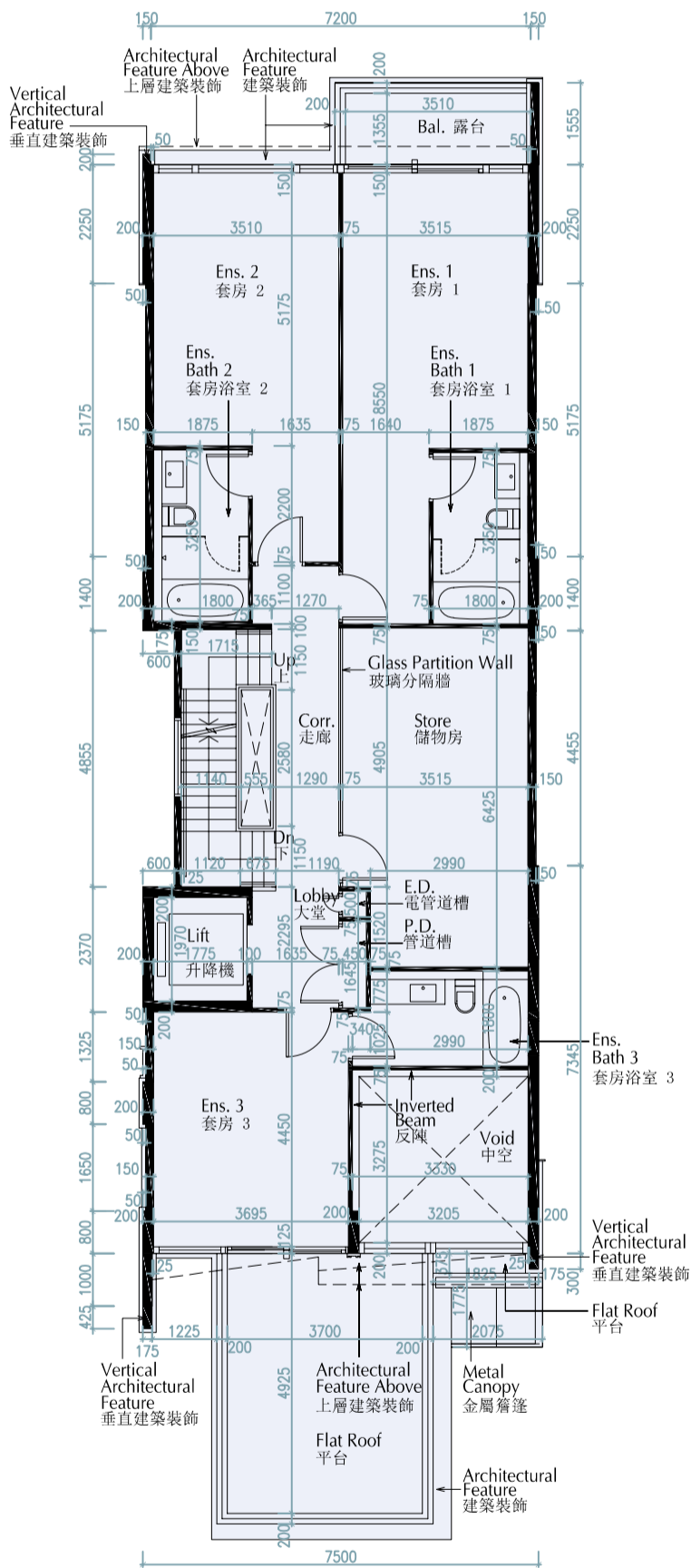
1. The internal areas of the residential properties on the upper floors will generally be slightly larger than those on the lower floors because of the reducing thickness of the structural walls on the upper floors.
2. The dimensions in the floor plans are all in millimetre.
3. Please refer to pages 24 and 25 of this sales brochure for legend of the terms and abbreviation shown on the floor plans.

備註：

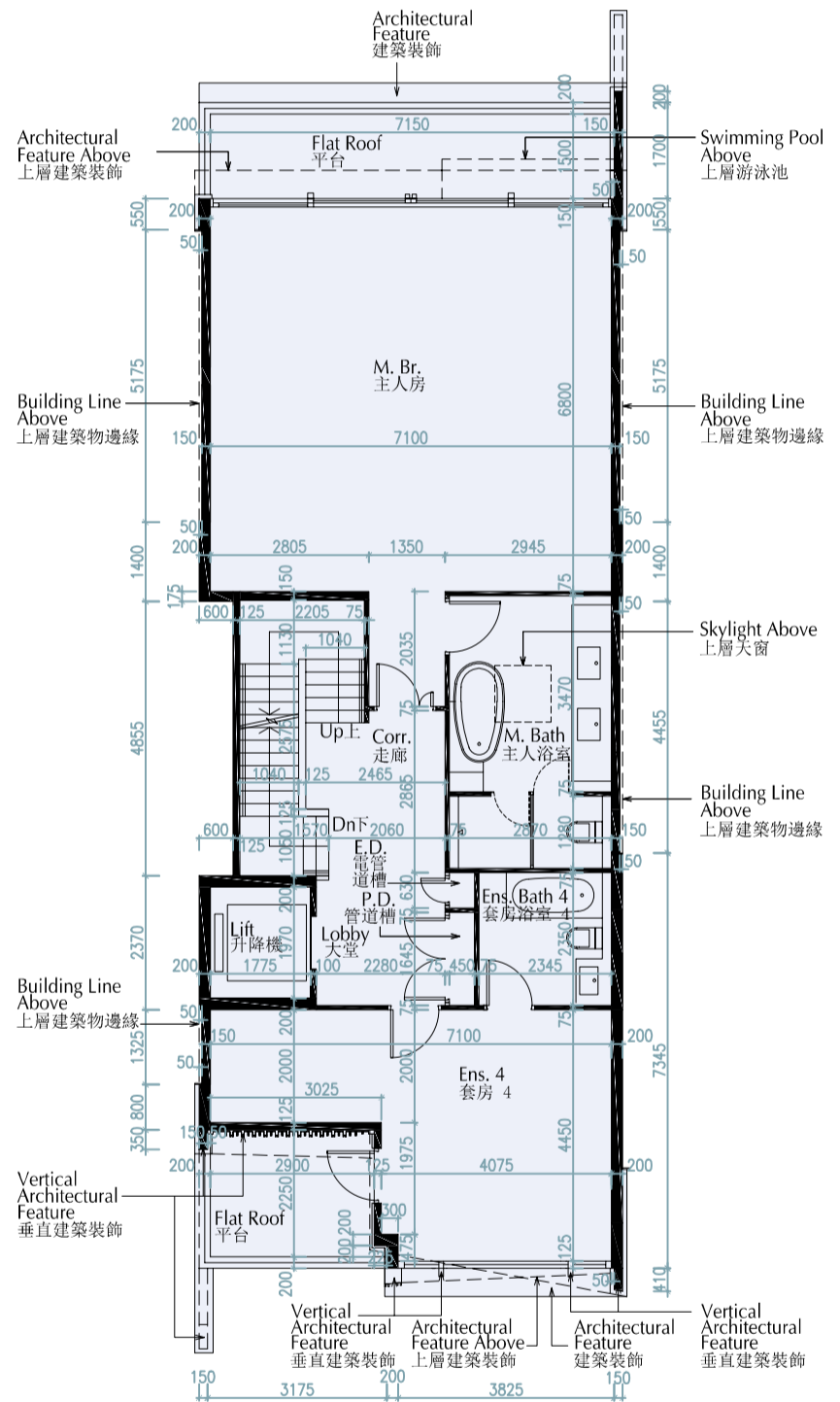
1. 因住宅物業的較高樓層的結構牆的厚度遞減，較高樓層的內部面積，一般比較低樓層的內部面積稍大。
2. 樓面平面圖所列之尺寸為以毫米標示。
3. 請參閱本售樓說明書第24及25頁為樓面平面圖而設之名詞及簡稱的圖例。

11 FLOOR PLANS OF RESIDENTIAL PROPERTIES IN THE DEVELOPMENT 發展項目的住宅物業的樓面平面圖

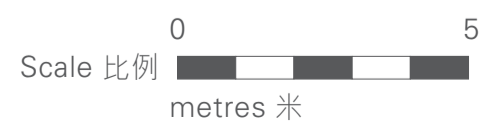
HOUSE 2 Floor Plan 2號洋房樓面平面圖



1/F Plan
1樓平面圖

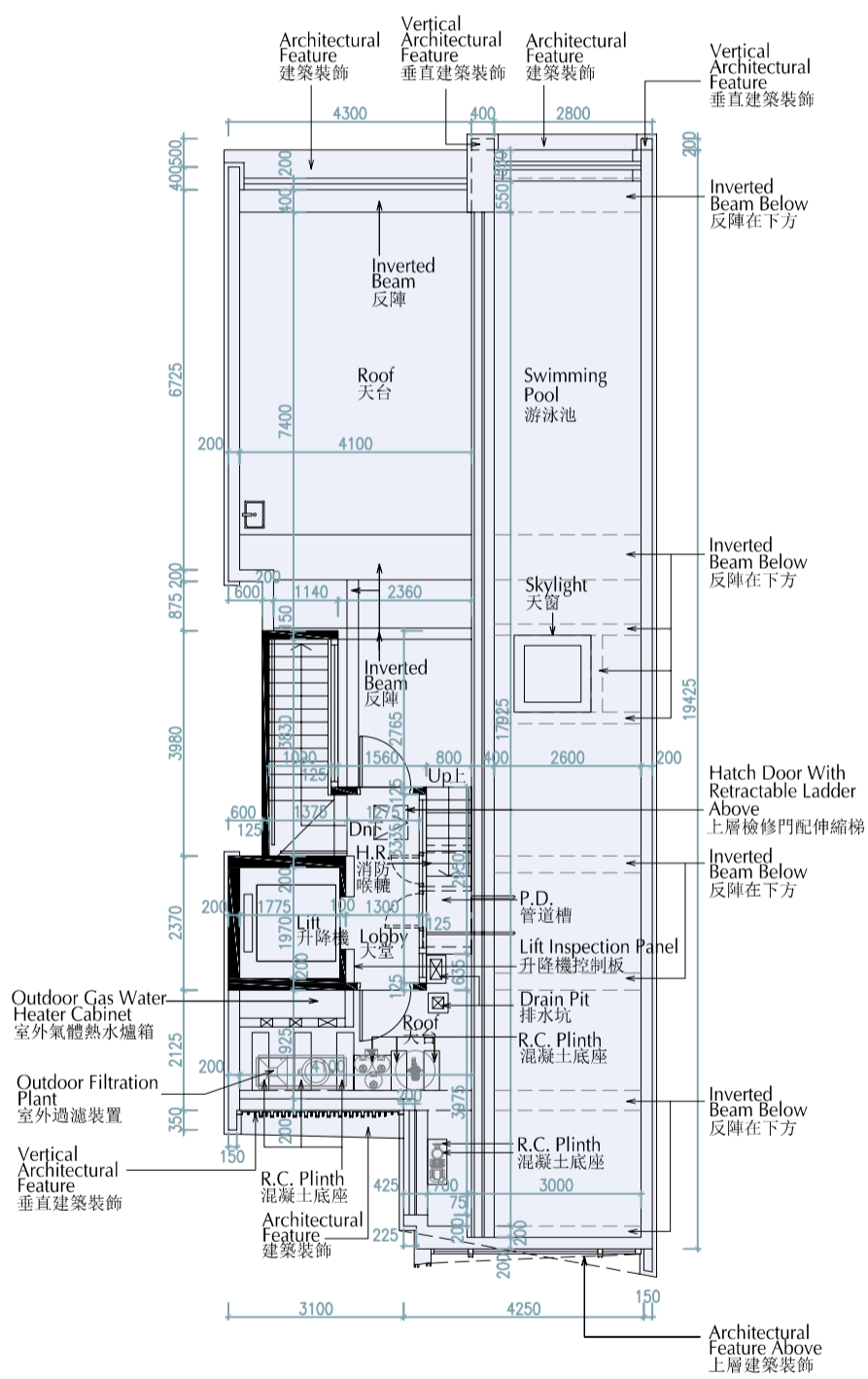


2/F Plan
2樓平面圖

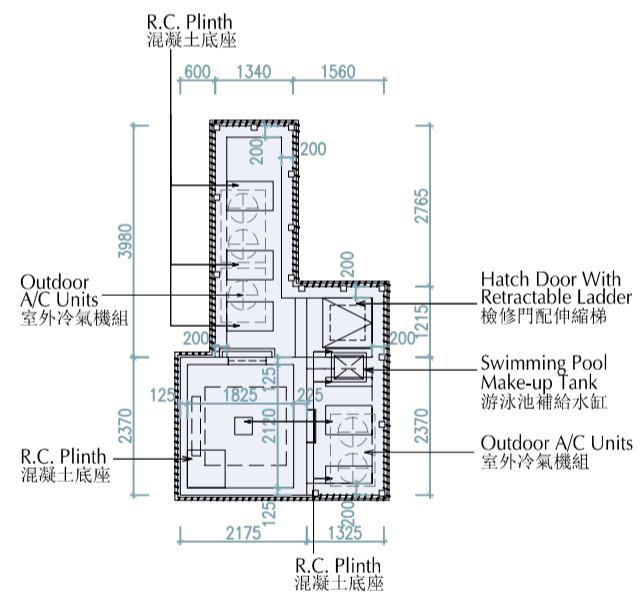


11 FLOOR PLANS OF RESIDENTIAL PROPERTIES IN THE DEVELOPMENT 發展項目的住宅物業的樓面平面圖

HOUSE 2 Floor Plan 2號洋房樓面平面圖



Roof Plan
天台平面圖



Top of Stairhood Plan
梯屋頂層平面圖



11 FLOOR PLANS OF RESIDENTIAL PROPERTIES IN THE DEVELOPMENT

發展項目的住宅物業的樓面平面圖

HOUSE 2 Floor Plan

2號洋房樓面平面圖

Floor 樓層	The thickness of the floor slabs (excluding plaster) of each residential property (mm) 每個住宅物業的樓板(不包括灰泥)的厚度(毫米)	The floor-to-floor height (refers to the height between the top surface of the structural slab of a floor and the top surface of the structural slab of its immediate upper floor) of each residential property (mm) 每個住宅物業的層與層之間的高度(指該樓層之石屎地台面與上一層石屎地台面之高度距離)(毫米)
B/F 地庫	200	5.000
G/F 地下	100, 150, 200, 250	3.675, 4.200, 4.250, 4.300, 4.500, 4.650, 4.850*, 7.200
1/F 1樓	100, 150, 200, 250	3.250, 3.300, 3.500, 3.700*, 3.800*
2/F 2樓	200	3.455, 3.500, 3.700*, 3.775, 4.300*
Roof 天台	175, 200	3.000
Top of Stairhood 梯屋頂層	Not applicable 不適用	Not applicable 不適用

* Inclusive of the thickness of mass concrete fill on sunken slab

* 包括跌級樓板上之混凝土填充層厚度。

Notes:

1. The internal areas of the residential properties on the upper floors will generally be slightly larger than those on the lower floors because of the reducing thickness of the structural walls on the upper floors.
2. The dimensions in the floor plans are all in millimetre.
3. Please refer to pages 24 and 25 of this sales brochure for legend of the terms and abbreviation shown on the floor plans.

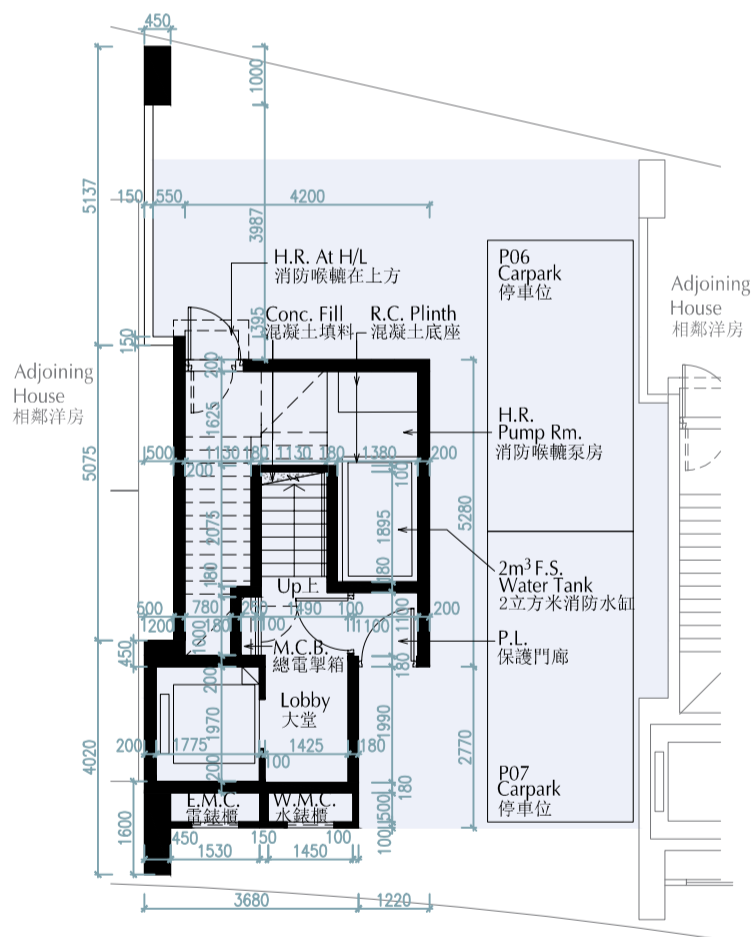
備註：

1. 因住宅物業的較高樓層的結構牆的厚度遞減，較高樓層的內部面積，一般比較低樓層的內部面積稍大。
2. 樓面平面圖所列之尺寸為以毫米標示。
3. 請參閱本售樓說明書第24及25頁為樓面平面圖而設之名詞及簡稱的圖例。

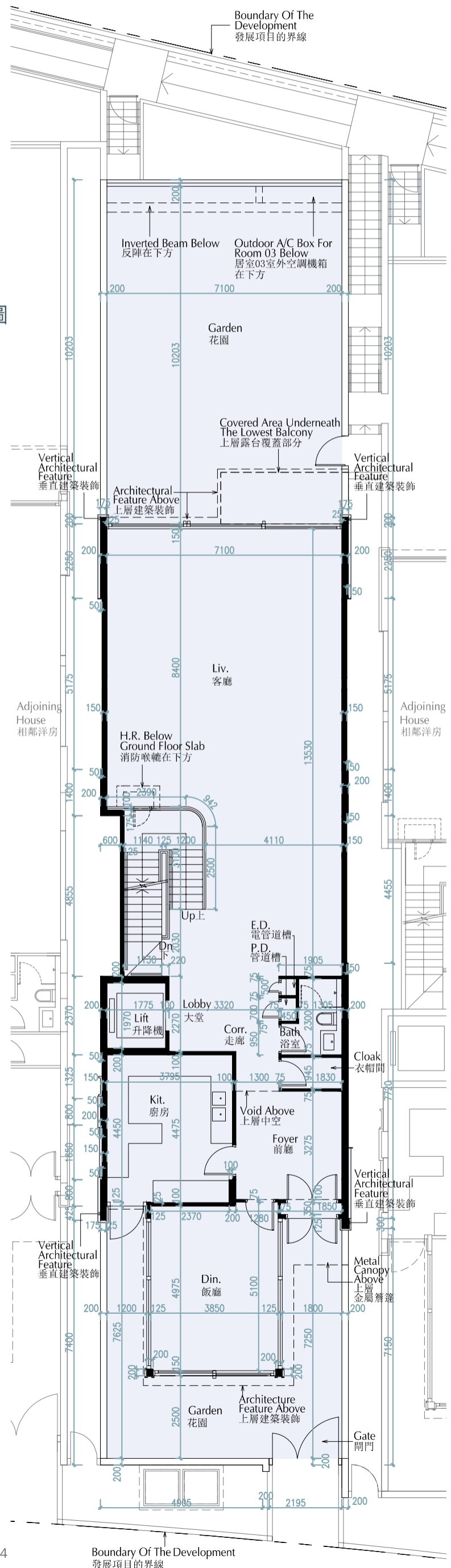
11 FLOOR PLANS OF RESIDENTIAL PROPERTIES IN THE DEVELOPMENT 發展項目的住宅物業的樓面平面圖

HOUSE 3 Floor Plan 3號洋房樓面平面圖

G/F Plan
地下平面圖

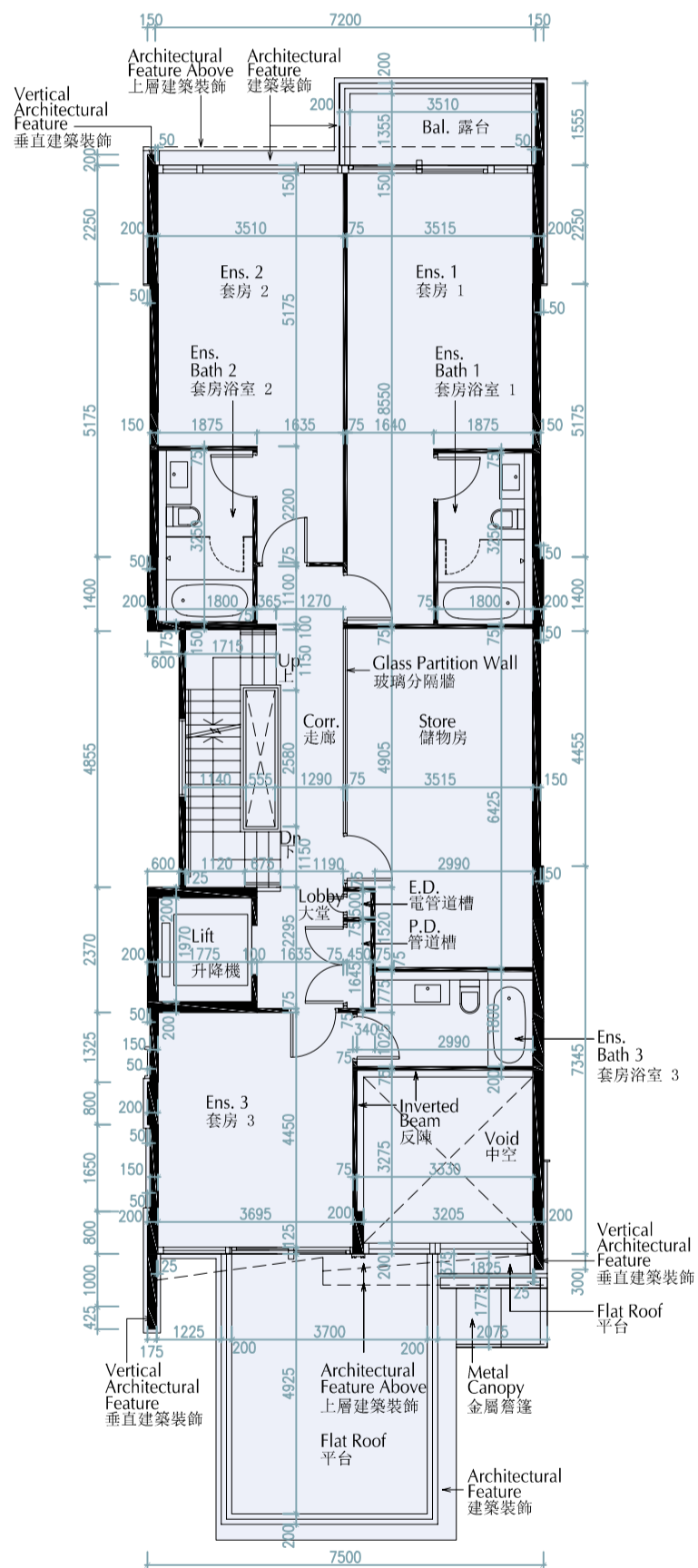


B/F Plan
地庫平面圖

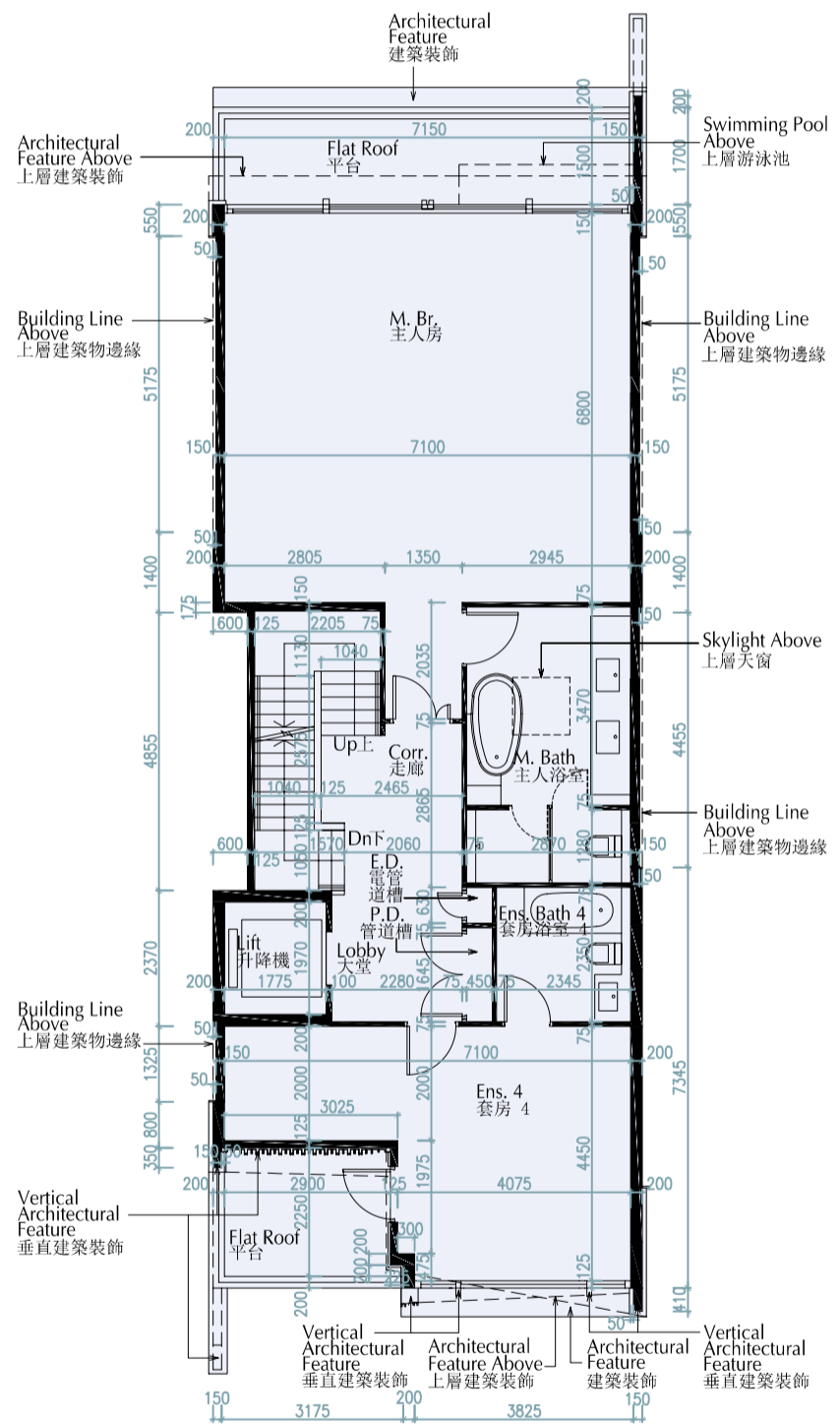


11 FLOOR PLANS OF RESIDENTIAL PROPERTIES IN THE DEVELOPMENT 發展項目的住宅物業的樓面平面圖

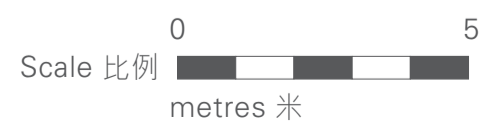
HOUSE 3 Floor Plan 3號洋房樓面平面圖



1/F Plan
1樓平面圖

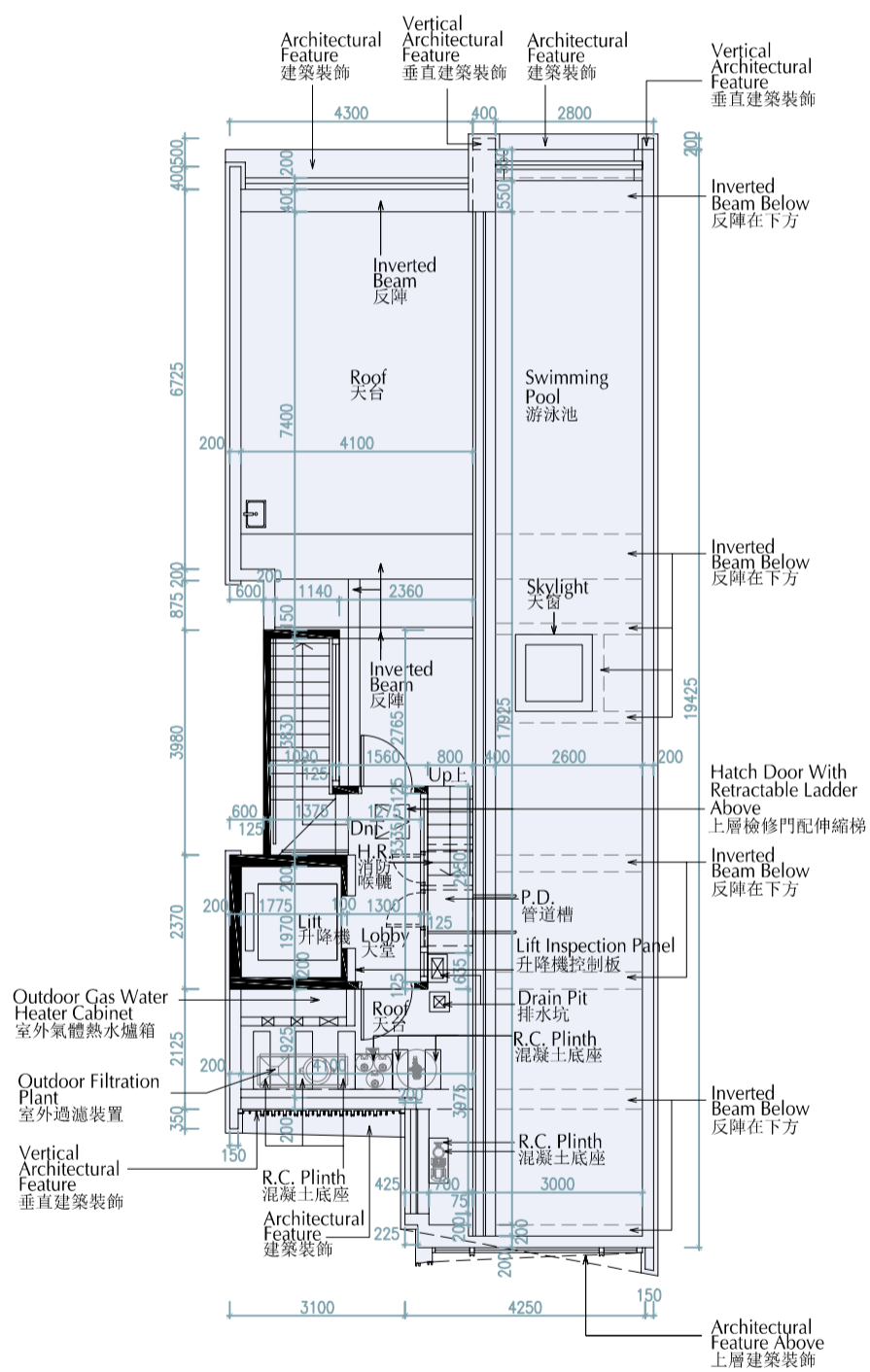


2/F Plan
2樓平面圖

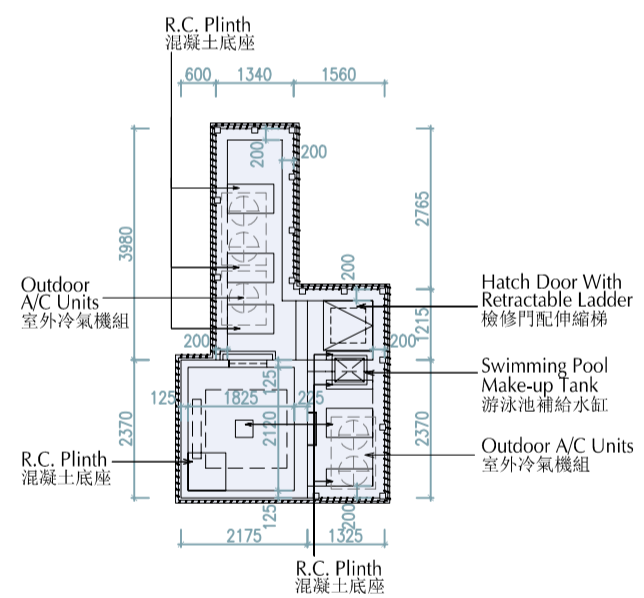


11 FLOOR PLANS OF RESIDENTIAL PROPERTIES IN THE DEVELOPMENT 發展項目的住宅物業的樓面平面圖

HOUSE 3 Floor Plan 3號洋房樓面平面圖



Roof Plan
天台平面圖



Top of Stairhood Plan
梯屋頂層平面圖



11 FLOOR PLANS OF RESIDENTIAL PROPERTIES IN THE DEVELOPMENT

發展項目的住宅物業的樓面平面圖

HOUSE 3 Floor Plan

3號洋房樓面平面圖

Floor 樓層	The thickness of the floor slabs (excluding plaster) of each residential property (mm) 每個住宅物業的樓板(不包括灰泥)的厚度(毫米)	The floor-to-floor height (refers to the height between the top surface of the structural slab of a floor and the top surface of the structural slab of its immediate upper floor) of each residential property (mm) 每個住宅物業的層與層之間的高度(指該樓層之石屎地台面與上一層石屎地台面之高度距離)(毫米)
B/F 地庫	200	5.000
G/F 地下	100, 150, 200, 250	3.675, 4.200, 4.250, 4.300, 4.500, 4.650, 4.850*, 7.200
1/F 1樓	100, 150, 200, 250	3.250, 3.300, 3.500, 3.700*, 3.800*
2/F 2樓	200	3.455, 3.500, 3.700*, 3.775, 4.300*
Roof 天台	175, 200	3.000
Top of Stairhood 梯屋頂層	Not applicable 不適用	Not applicable 不適用

* Inclusive of the thickness of mass concrete fill on sunken slab

* 包括跌級樓板上之混凝土填充層厚度。

Notes:

1. The internal areas of the residential properties on the upper floors will generally be slightly larger than those on the lower floors because of the reducing thickness of the structural walls on the upper floors.
2. The dimensions in the floor plans are all in millimetre.
3. Please refer to pages 24 and 25 of this sales brochure for legend of the terms and abbreviation shown on the floor plans.

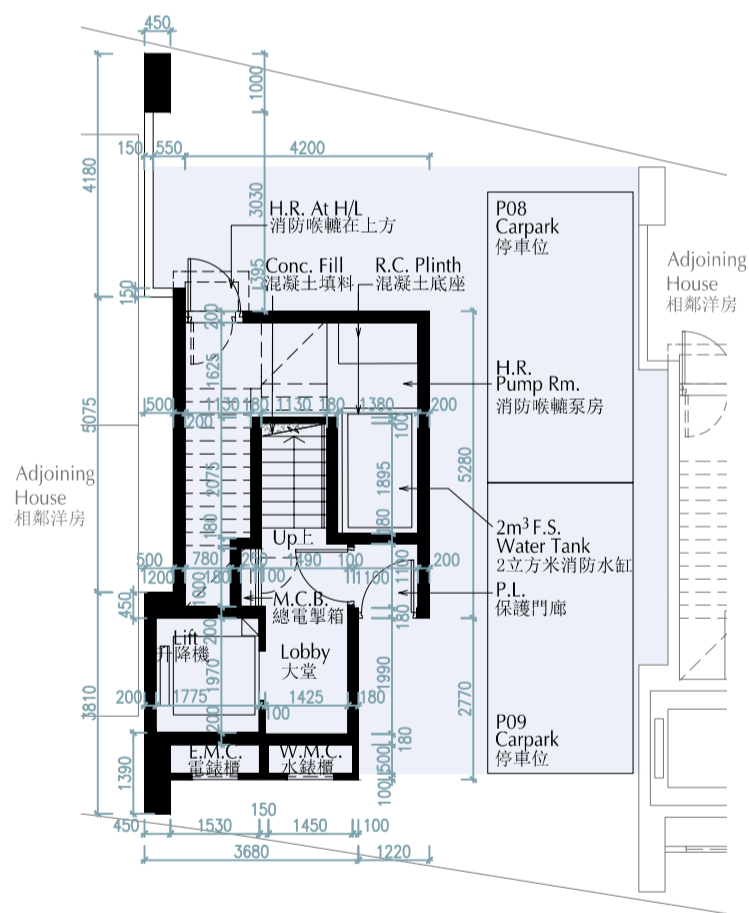
備註：

1. 因住宅物業的較高樓層的結構牆的厚度遞減，較高樓層的內部面積，一般比較低樓層的內部面積稍大。
2. 樓面平面圖所列之尺寸為以毫米標示。
3. 請參閱本售樓說明書第24及25頁為樓面平面圖而設之名詞及簡稱的圖例。

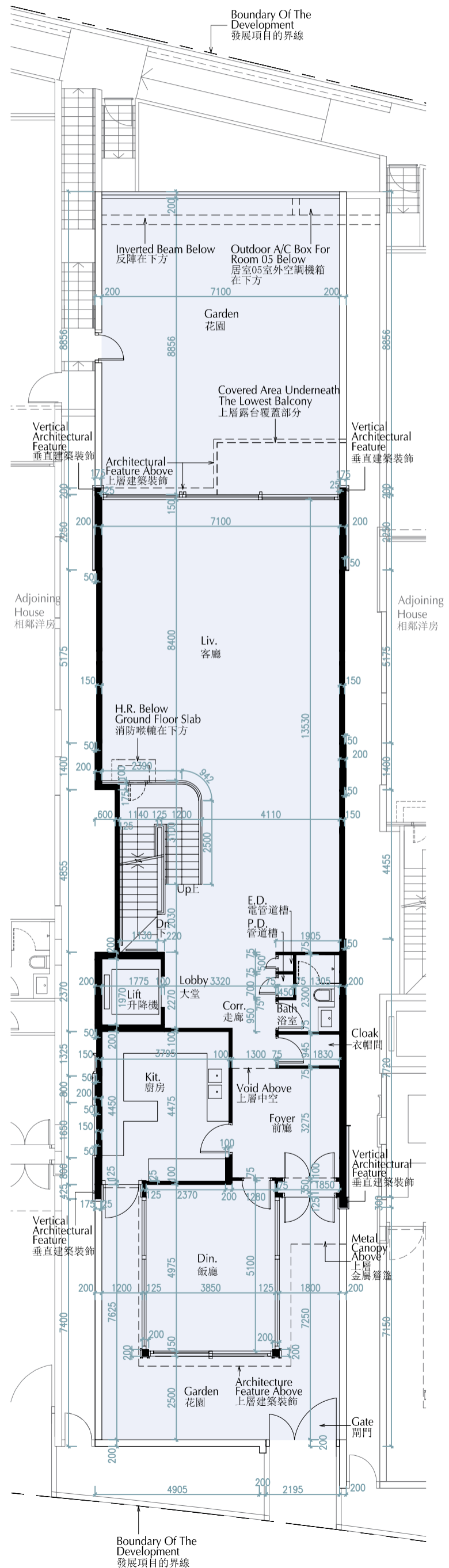
11 FLOOR PLANS OF RESIDENTIAL PROPERTIES IN THE DEVELOPMENT 發展項目的住宅物業的樓面平面圖

HOUSE 5 Floor Plan 5號洋房樓面平面圖

G/F Plan
地下平面圖

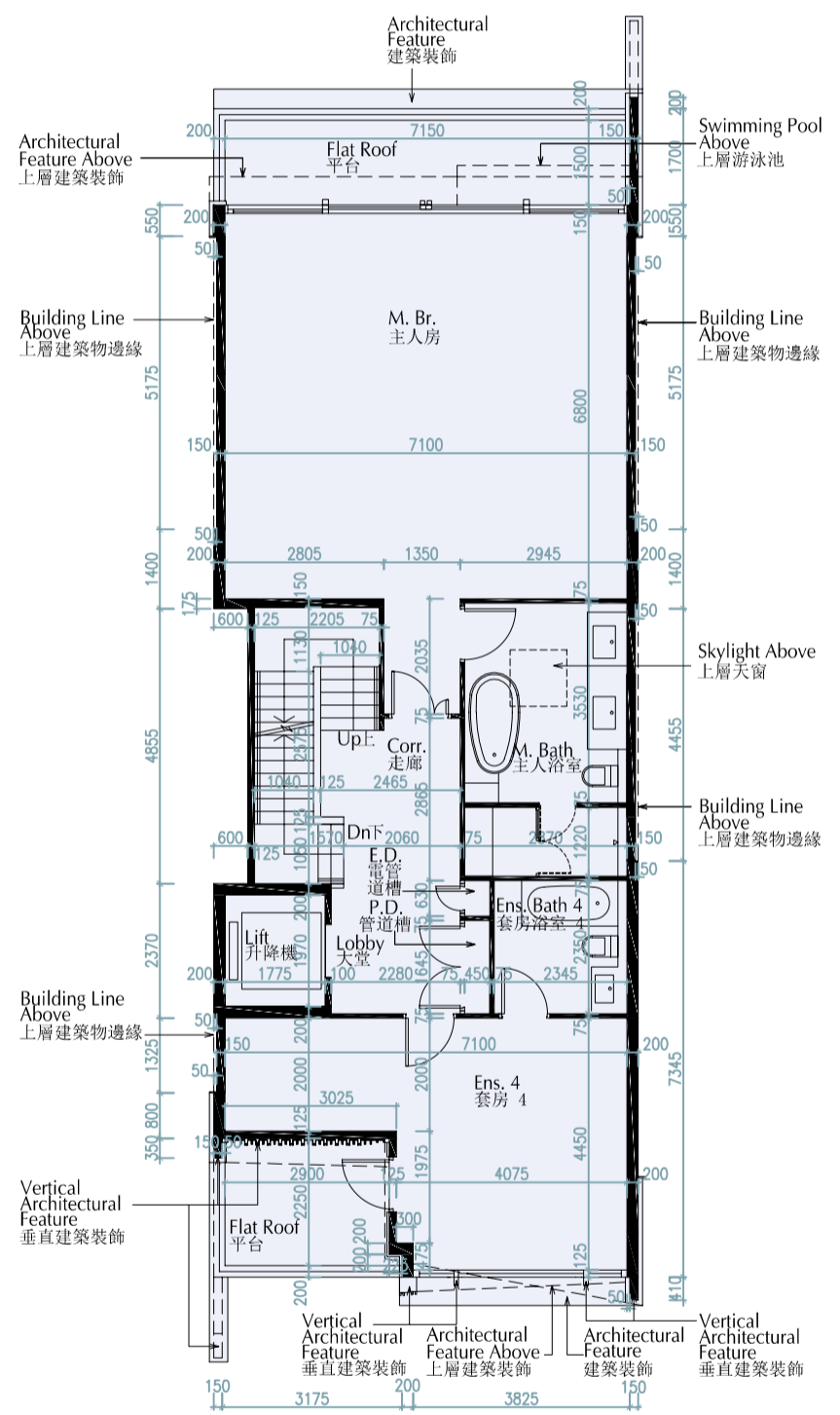
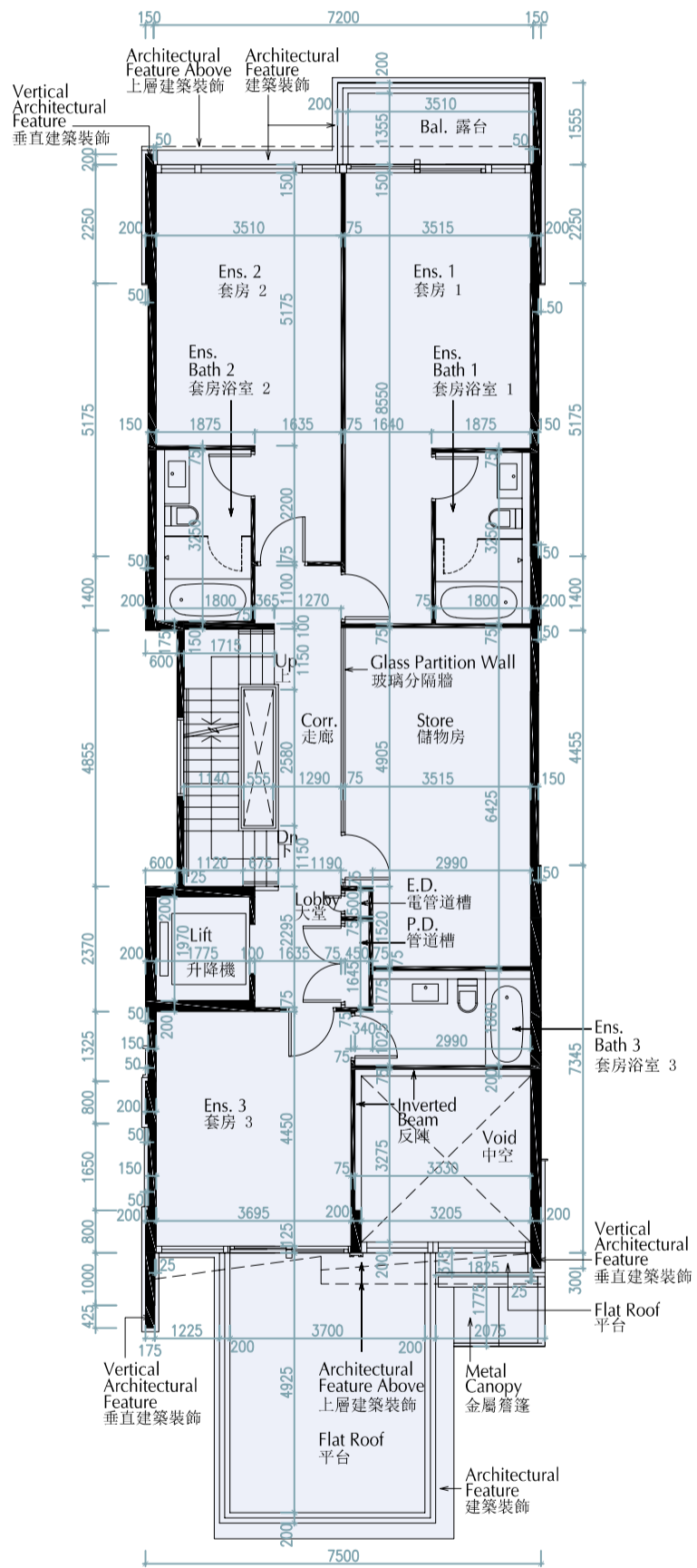


B/F Plan
地庫平面圖



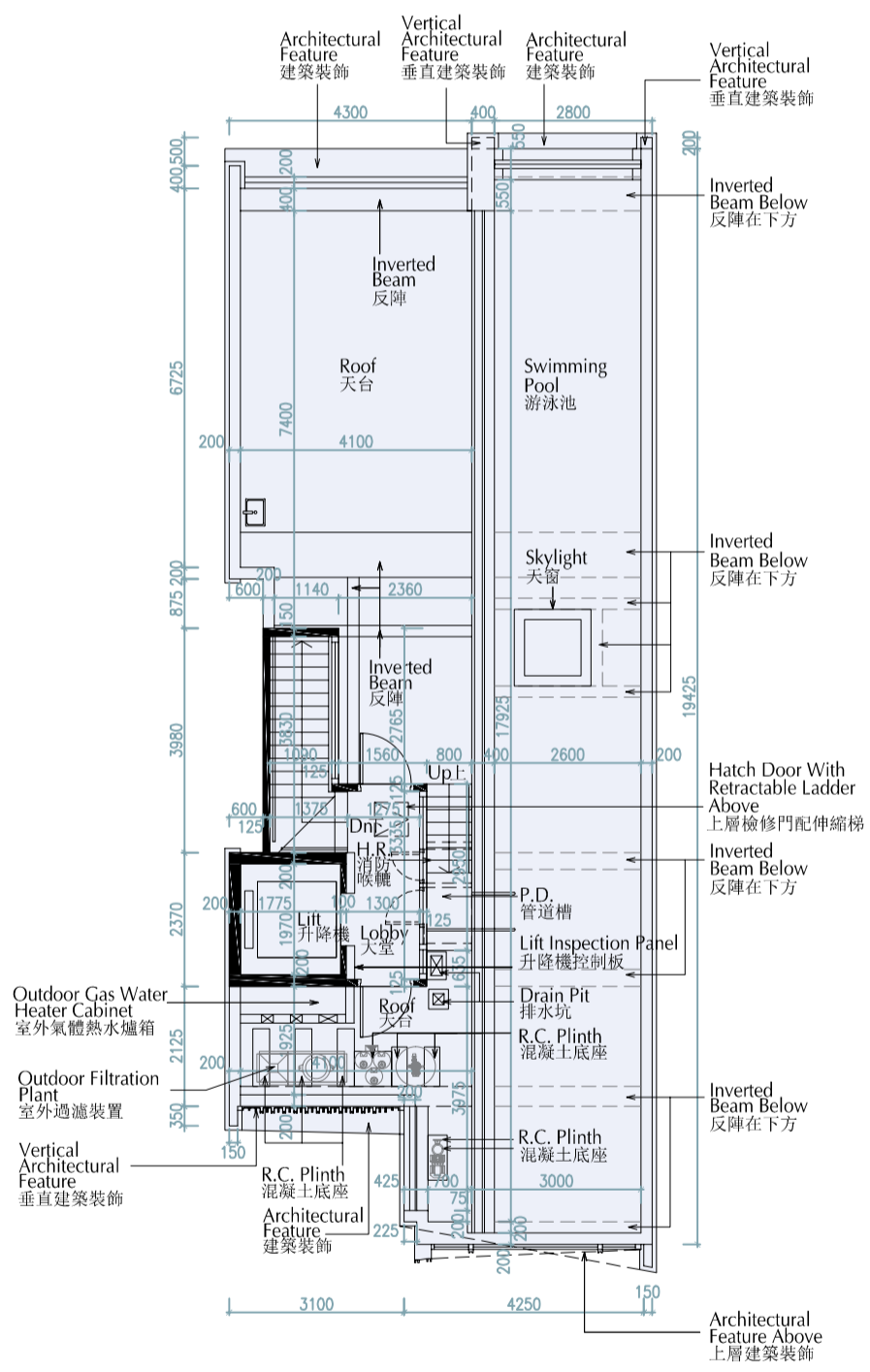
11 FLOOR PLANS OF RESIDENTIAL PROPERTIES IN THE DEVELOPMENT 發展項目的住宅物業的樓面平面圖

HOUSE 5 Floor Plan 5號洋房樓面平面圖

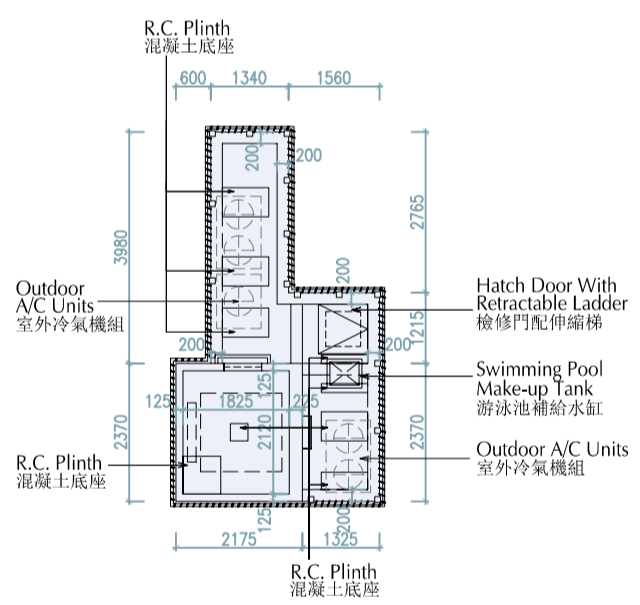


11 FLOOR PLANS OF RESIDENTIAL PROPERTIES IN THE DEVELOPMENT 發展項目的住宅物業的樓面平面圖

HOUSE 5 Floor Plan 5號洋房樓面平面圖



Roof Plan
天台平面圖



Top of Stairhood Plan
梯屋頂層平面圖



11 FLOOR PLANS OF RESIDENTIAL PROPERTIES IN THE DEVELOPMENT

發展項目的住宅物業的樓面平面圖

HOUSE 5 Floor Plan

5號洋房樓面平面圖

Floor 樓層	The thickness of the floor slabs (excluding plaster) of each residential property (mm) 每個住宅物業的樓板(不包括灰泥)的厚度(毫米)	The floor-to-floor height (refers to the height between the top surface of the structural slab of a floor and the top surface of the structural slab of its immediate upper floor) of each residential property (mm) 每個住宅物業的層與層之間的高度(指該樓層之石屎地台面與上一層石屎地台面之高度距離)(毫米)
B/F 地庫	200	5.000
G/F 地下	100, 150, 200, 250	3.675, 4.200, 4.250, 4.300, 4.500, 4.650, 4.850*, 7.200
1/F 1樓	100, 150, 200, 250	3.250, 3.300, 3.500, 3.700*, 3.800*
2/F 2樓	200	3.455, 3.500, 3.700*, 3.775, 4.300*
Roof 天台	175, 200	3.000
Top of Stairhood 梯屋頂層	Not applicable 不適用	Not applicable 不適用

* Inclusive of the thickness of mass concrete fill on sunken slab

* 包括跌級樓板上之混凝土填充層厚度。

Notes:

1. The internal areas of the residential properties on the upper floors will generally be slightly larger than those on the lower floors because of the reducing thickness of the structural walls on the upper floors.
2. The dimensions in the floor plans are all in millimetre.
3. Please refer to pages 24 and 25 of this sales brochure for legend of the terms and abbreviation shown on the floor plans.

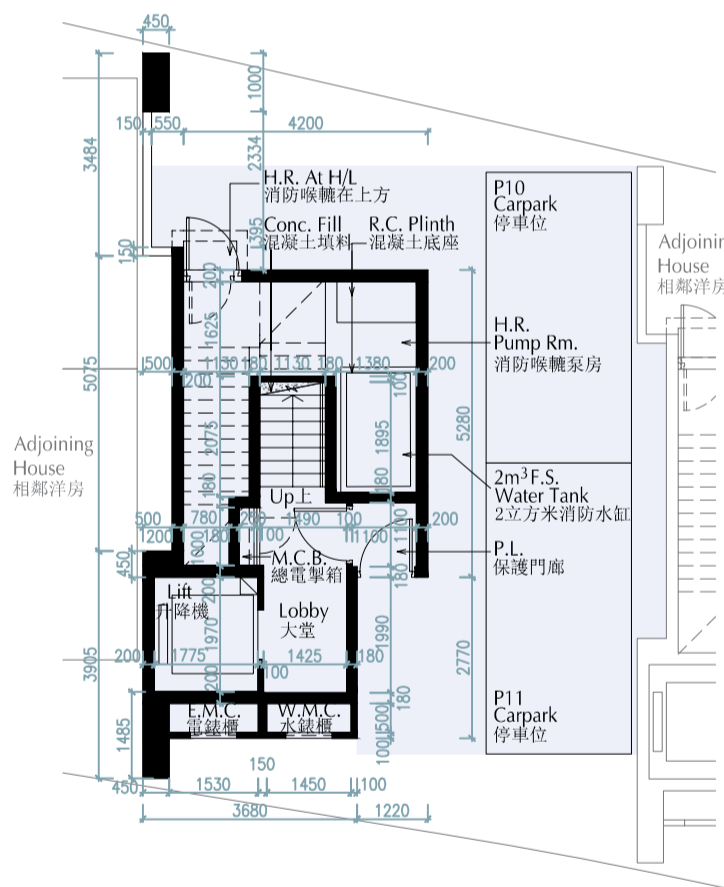
備註：

1. 因住宅物業的較高樓層的結構牆的厚度遞減，較高樓層的內部面積，一般比較低樓層的內部面積稍大。
2. 樓面平面圖所列之尺寸為以毫米標示。
3. 請參閱本售樓說明書第24及25頁為樓面平面圖而設之名詞及簡稱的圖例。

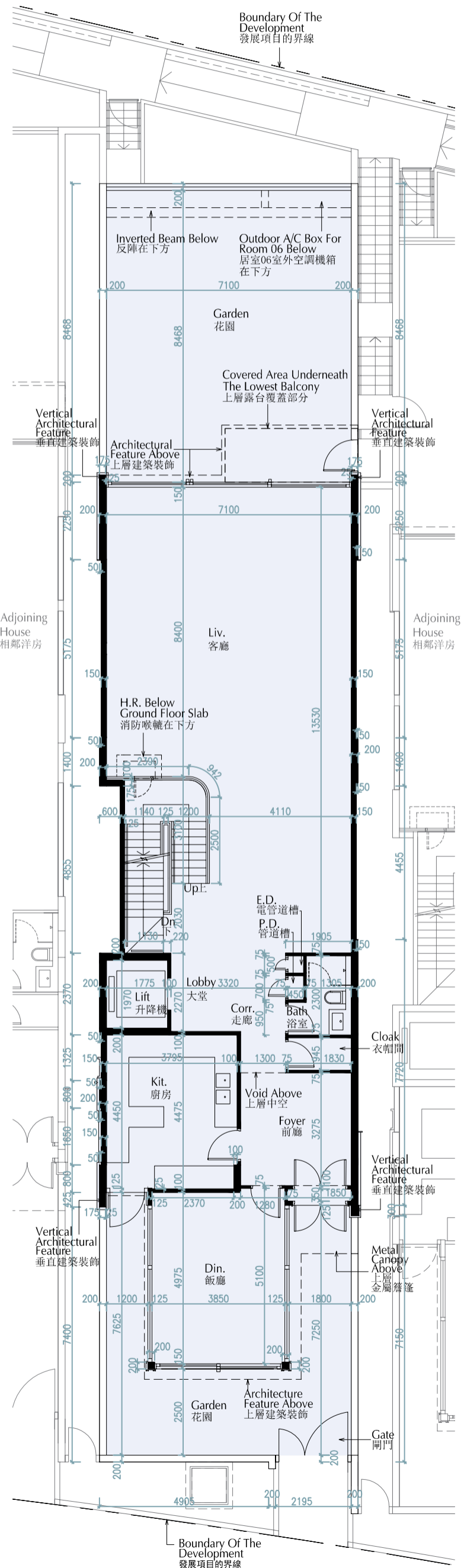
11 FLOOR PLANS OF RESIDENTIAL PROPERTIES IN THE DEVELOPMENT 發展項目的住宅物業的樓面平面圖

HOUSE 6 Floor Plan 6號洋房樓面平面圖

G/F Plan
地下平面圖

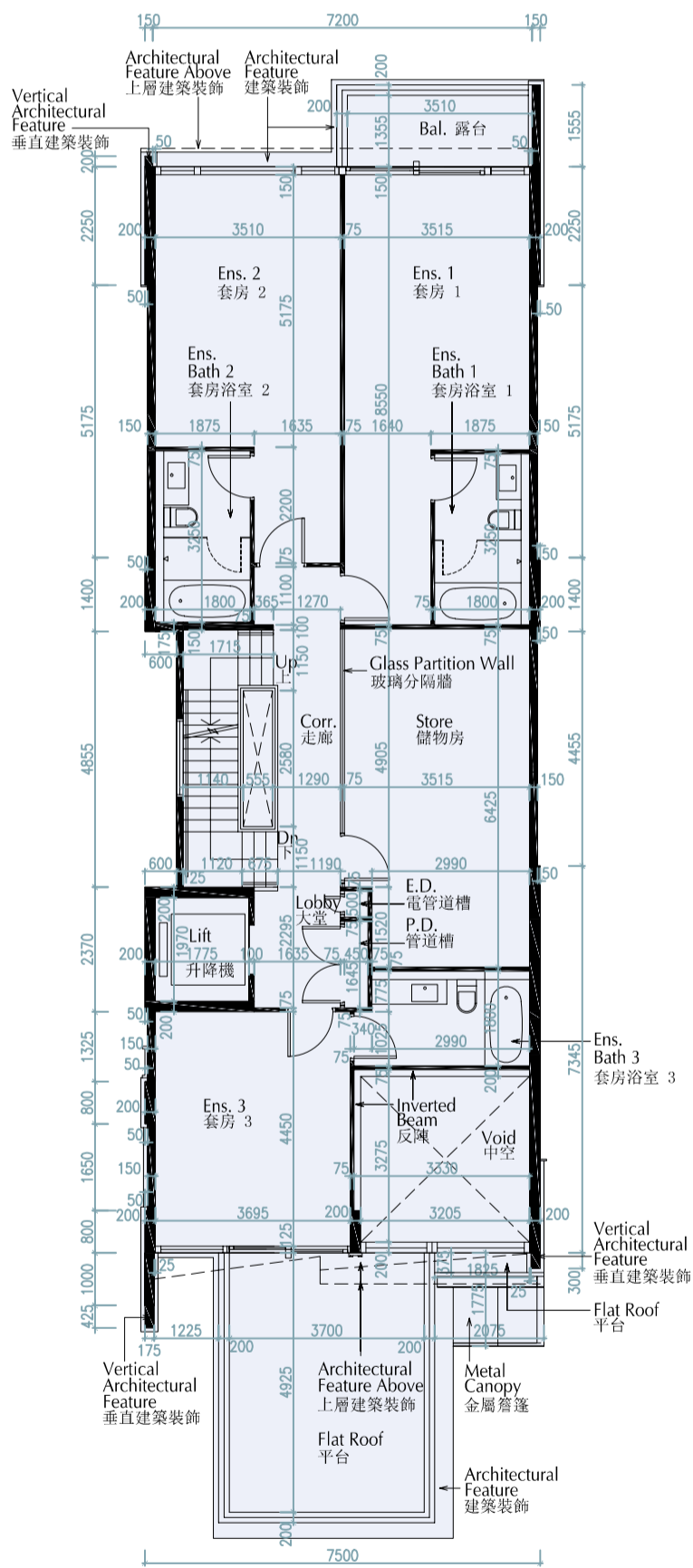


B/F Plan
地庫平面圖

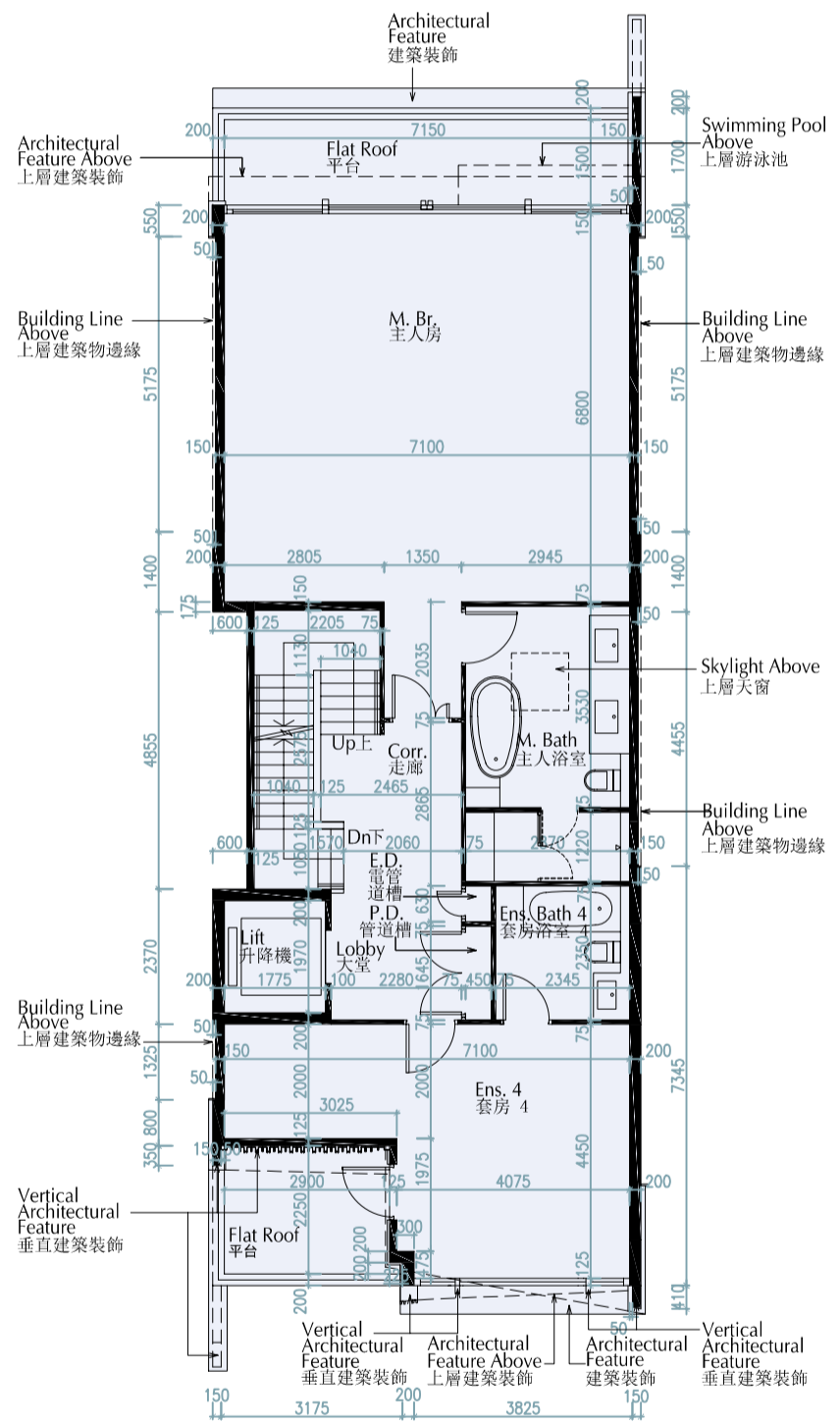


11 FLOOR PLANS OF RESIDENTIAL PROPERTIES IN THE DEVELOPMENT 發展項目的住宅物業的樓面平面圖

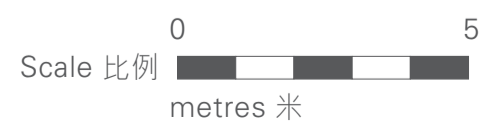
HOUSE 6 Floor Plan 6號洋房樓面平面圖



1/F Plan
1樓平面圖

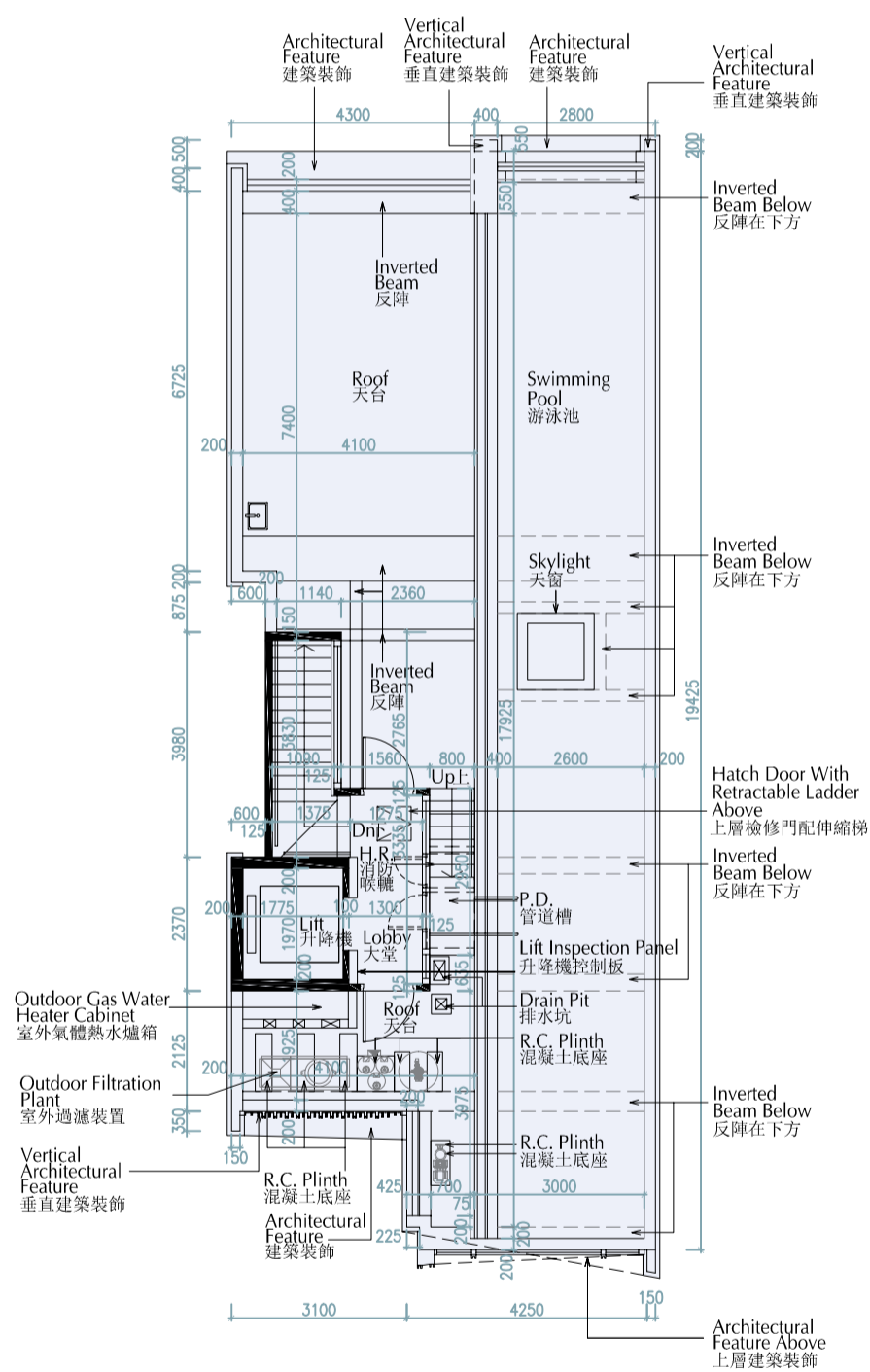


2/F Plan
2樓平面圖

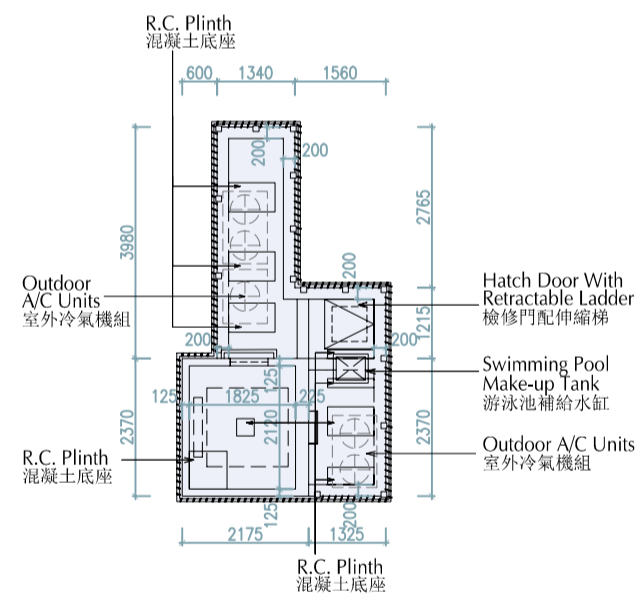


11 FLOOR PLANS OF RESIDENTIAL PROPERTIES IN THE DEVELOPMENT 發展項目的住宅物業的樓面平面圖

HOUSE 6 Floor Plan 6號洋房樓面平面圖



Roof Plan
天台平面圖



Top of Stairhood Plan
梯屋頂層平面圖



11 FLOOR PLANS OF RESIDENTIAL PROPERTIES IN THE DEVELOPMENT

發展項目的住宅物業的樓面平面圖

HOUSE 6 Floor Plan

6號洋房樓面平面圖

Floor 樓層	The thickness of the floor slabs (excluding plaster) of each residential property (mm) 每個住宅物業的樓板(不包括灰泥)的厚度(毫米)	The floor-to-floor height (refers to the height between the top surface of the structural slab of a floor and the top surface of the structural slab of its immediate upper floor) of each residential property (mm) 每個住宅物業的層與層之間的高度(指該樓層之石屎地台面與上一層石屎地台面之高度距離)(毫米)
B/F 地庫	200	5.000
G/F 地下	100, 150, 200, 250	3.675, 4.200, 4.250, 4.300, 4.500, 4.650, 4.850*, 7.200
1/F 1樓	100, 150, 200, 250	3.250, 3.300, 3.500, 3.700*, 3.800*
2/F 2樓	200	3.455, 3.500, 3.700*, 3.775, 4.300*
Roof 天台	175, 200	3.000
Top of Stairhood 梯屋頂層	Not applicable 不適用	Not applicable 不適用

* Inclusive of the thickness of mass concrete fill on sunken slab

* 包括跌級樓板上之混凝土填充層厚度。

Notes:

1. The internal areas of the residential properties on the upper floors will generally be slightly larger than those on the lower floors because of the reducing thickness of the structural walls on the upper floors.
2. The dimensions in the floor plans are all in millimetre.
3. Please refer to pages 24 and 25 of this sales brochure for legend of the terms and abbreviation shown on the floor plans.

備註：

1. 因住宅物業的較高樓層的結構牆的厚度遞減，較高樓層的內部面積，一般比較低樓層的內部面積稍大。
2. 樓面平面圖所列之尺寸為以毫米標示。
3. 請參閱本售樓說明書第24及25頁為樓面平面圖而設之名詞及簡稱的圖例。

