

Floor plans of residential properties in the phase 期數的住宅物業的樓面平面圖

Remarks applicable to the floor plans in this section:

- There are architectural features, metal grilles and/or exposed pipes on the external walls of some of the floors. For details, please refer to the latest approved building plans and/or approved drainage plans and/or other relevant plans.
- Common pipes exposed and/or enclosed in cladding are located at/adjacent to the balcony and/or utility platform and/or flat roof and/or air-conditioner platform and/or external wall of some residential properties. For details, please refer to the latest approved building plans and/or approved drainage plans and/or other relevant plans.
- There are sunken slabs for mechanical and electrical services and/or false ceiling/bulkheads for the air-conditioning fittings and/or mechanical and electrical services at some residential properties.
- There are exposed pipes installed in some stores, utility rooms, bathrooms, and toilets.
- There are pipes enclosed by the fittings and finishes in some residential properties. For details, please refer to the latest approved drainage plans and/or other relevant plans.
- The air-conditioner (outdoor unit) at air-conditioner platform may emit sounds.
- Balconies and utility platforms are non-enclosed areas.
- There are non-structural prefabricated external walls in some residential properties. The Saleable Area as defined in the formal Agreement for Sale and Purchase of a residential property has included the non-structural prefabricated external walls and is measured from the exterior of such non-structural prefabricated external walls.
- The ceiling height of some residential properties may vary due to structural, architectural and/or decoration design variations.
- During the necessary maintenance of the external walls of towers arranged by Manager of the Phase, suspended working platform will be operating in the airspace outside windows of the residential properties and above flat roof / roof of such towers.
- Symbols of fittings and fitments such as bath tub, sink, water closet, shower, sink counter, etc. in the floor plans are prepared based on the latest approved building plans and are for general indication only.
- There is a TV relay station located at SMATV Room (RESID) at roof of Tower 5.

適用於本節之樓面平面圖之備註：

- 部分樓層外牆範圍設有建築裝飾、金屬格柵及/或外露喉管，詳細資料請參考最新經批准的建築圖則及/或經批准的排水設施圖則及/或其他相關圖則。
- 部分住宅物業的露台及/或工作平台及/或平台及/或空調機平台及/或外牆上/附近設有外露及/或外牆覆蓋板內藏之公用喉管，詳細資料請參考最新經批准的建築圖則及/或經批准的排水設施圖則及/或其他相關圖則。
- 部分住宅物業有用以安裝機電設備的跌級樓板及/或用以裝置空調裝備及/或其他機電設備的假天花/裝飾橫樑。
- 部分儲物房、工作間、浴室及洗手間內裝有外露喉管。
- 部分住宅物業於裝置及裝修物料內設有喉管。詳細資料請參考經批准的排水設施圖則及其他相關圖則。
- 空調機(室外機)於空調機平台可能釋放聲音。
- 露台及工作平台為不可封閉的地方。
- 部分住宅物業有非結構預製外牆。正式買賣合約之實用面積之計算包括非結構預製外牆，並由非結構預製外牆之外圍起計。
- 部分住宅物業之天花高度將會因應結構、建築設計及/或裝修設計上的需要有所差異。
- 在期數管理人安排於大廈外牆之必要維修進行期間，吊船將在該等大廈的住宅物業之窗戶外及平台/天台上之空間運作。
- 樓面平面圖上所顯示的裝置符號，如浴缸、洗滌盆、坐廁、花灑、洗滌盆櫃等乃按最新的經批准的建築圖則繪製，只作一般示意用途。
- 電視轉播站設置於第5座天台之衛星電視共用天線房(住宅)。

Legend for floor plans of residential properties in the Phase 期數的住宅物業的樓面平面圖圖例

| | | |
|--------------------------------|---|---|
| ACOUSTIC BALCONY (BAFFLE TYPE) | = | 減音露台(擋音式) |
| ACOUSTIC WINDOW (BAFFLE TYPE) | = | 減音窗戶(擋音式) |
| ACOUSTIC UP (BAFFLE TYPE) | = | 減音工作平台(擋音式) |
| A/C | = | 空調機平台 |
| AD | = | 通風槽 |
| AF | = | 建築裝飾 |
| ALUM AF | = | 鋁質建築裝飾 |
| ALUM AF WITH CW BELOW | = | 鋁質建築裝飾與設於下方的玻璃幕牆 |
| BATH | = | 浴室 |
| BAL | = | 露台 |
| BAL ABOVE | = | 露台設於上方 |
| BALCONY WITH ACOUSTIC CEILING | = | 配有減音天花的露台 |
| BR | = | 睡房 |
| CANOPY | = | 簷篷 |
| CORRIDOR | = | 走廊 |
| CORR | = | 公用平台 |
| D | = | 下 |
| DOGHOUSE | = | 連接下層的機電設施管道 |
| DIN | = | 飯廳 |
| EAD | = | 抽風槽 |
| ELV | = | 低電壓槽 |
| ELE | = | 電線槽/電錶房 |
| FR | = | 平台 |
| HR | = | 消防喉轆 |
| KIT | = | 廚房 |
| LIFT | = | 升降機 |
| LIFT LOBBY | = | 升降機大堂 |
| LIFT SHAFT | = | 升降機槽 |
| LIV | = | 客廳 |
| MAINTENANCE ACCESS | = | 檢修通道 |
| MAINTENANCE WINDOW FOR A/C | = | 空調機平台維修用窗 |
| MBR | = | 主人睡房 |
| OPEN KIT | = | 開放式廚房 |
| PD | = | 管道槽 |
| PLANTER | = | 花槽 |
| PW | = | 管道井 |
| ROOF | = | 天台 |
| RSMRR | = | 垃圾及物料回收室 |
| SERVICE LIFT | = | 服務升降機 |
| SERVICE LIFT LOBBY | = | 服務升降機大堂 |
| ST | = | 儲物房 |
| T | = | 洗手間 |
| T5A | = | 第5座(5A) |
| T5B | = | 第5座(5B) |
| T6A | = | 第6座(6A) |
| T6B | = | 第6座(6B) |
| T7A | = | 第7座(7A) |
| T7B | = | 第7座(7B) |
| U | = | 上 |
| UP | = | 工作平台 |
| UP ABOVE | = | 工作平台設於上方 |
| UTL | = | 工作間 |
| WMC | = | 水錶箱 |
| | = | Acoustic Utility Platform (Baffle Type) |
| | = | Air-conditioner Platform |
| | = | Air Duct |
| | = | Architectural Feature |
| | = | Aluminium Architectural Feature |
| | = | Aluminium Architectural Feature with Curtain Wall below |
| | = | Bathroom |
| | = | Balcony |
| | = | Balcony above |
| | = | Bedroom |
| | = | Common Flat Roof |
| | = | Down |
| | = | Mechanical and Electrical Services Duct connecting to the Floor below |
| | = | Dining Room |
| | = | Exhaust Air Duct |
| | = | Extra Low Voltage Riser Duct |
| | = | Electrical Duct / Meter Room |
| | = | Flat Roof |
| | = | Hose Reel |
| | = | Kitchen |
| | = | Living Room |
| | = | Maintenance Window for Air-conditioner Platform |
| | = | Master Bedroom |
| | = | Open Kitchen |
| | = | Pipe Duct |
| | = | Pipe Well |
| | = | Refuse Storage and Material Recovery Room |
| | = | Service Lift |
| | = | Service Lift Lobby |
| | = | Store |
| | = | Toilet |
| | = | Tower 5 (5A) |
| | = | Tower 5 (5B) |
| | = | Tower 6 (6A) |
| | = | Tower 6 (6B) |
| | = | Tower 7 (7A) |
| | = | Tower 7 (7B) |
| | = | Up |
| | = | Utility Platform |
| | = | Utility Platform above |
| | = | Utility Room |
| | = | Water Meter Cabinet |

Floor plans of residential properties in the phase 期數的住宅物業的樓面平面圖

Tower 5 (5A & 5B) 7/F
第5座 (5A及5B) 7樓

| Description 描述 | Tower 5 (5A) 第5座 (5A) | | | | | Tower 5 (5B) 第5座 (5B) | | | |
|---|---|--|---|---|---|--|---|--|------------|
| | Flat 單位 | | | | | Flat 單位 | | | |
| | A | B | C | D | E | A | B | C | D |
| Floor-to-floor height (refers to the height between the top surface of the structural slab of a floor and the top surface of the structural slab of its immediate upper floor) of each residential property (m) 每個住宅物業的層與層之間的高度 (指該樓層之石屎地台面與上一層石屎地台面之高度距離) (米) | 2.735 3.035 3.185 3.235 3.535 | 2.685 2.735 2.935 3.035 3.185 3.235 3.435 3.535 | 2.585 2.710 2.735 3.035 3.085 3.185 3.210 3.235 3.535 | 2.735 3.035 3.210 3.435 3.535 | 2.910 3.035 3.210 3.285 3.410 3.435 3.535 | 2.935 3.035 3.185 3.235 3.435 3.535 | 2.685 2.735 3.035 3.185 3.235 3.435 3.535 | 2.735 3.035 3.210 3.235 3.435 3.535 | |
| Thickness of the floor slabs (excluding plaster) of each residential property (mm) 每個住宅物業的樓板 (不包括灰泥) 厚度 (毫米) | 150 300 | | 150 175 | | 150 175 300 | 150 | 150 300 | | 150 175 |

The internal areas of the residential properties on the upper floors will generally be slightly larger than those on the lower floors because of the reducing thickness of the structural walls on the upper floors (Note: This statement as required under section 10(2)(e) of Part 1 of Schedule 1 to the Residential Properties (First-hand Sales) Ordinance is not applicable to the Phase).

因住宅物業的較高樓層的結構牆的厚度遞減，較高樓層的內部面積，一般比較低樓層的內部面積稍大(備註：此《一手住宅物業銷售條例》附表1第1部第10(2)(e)條規定之陳述並不適用於期數)。

Remarks :

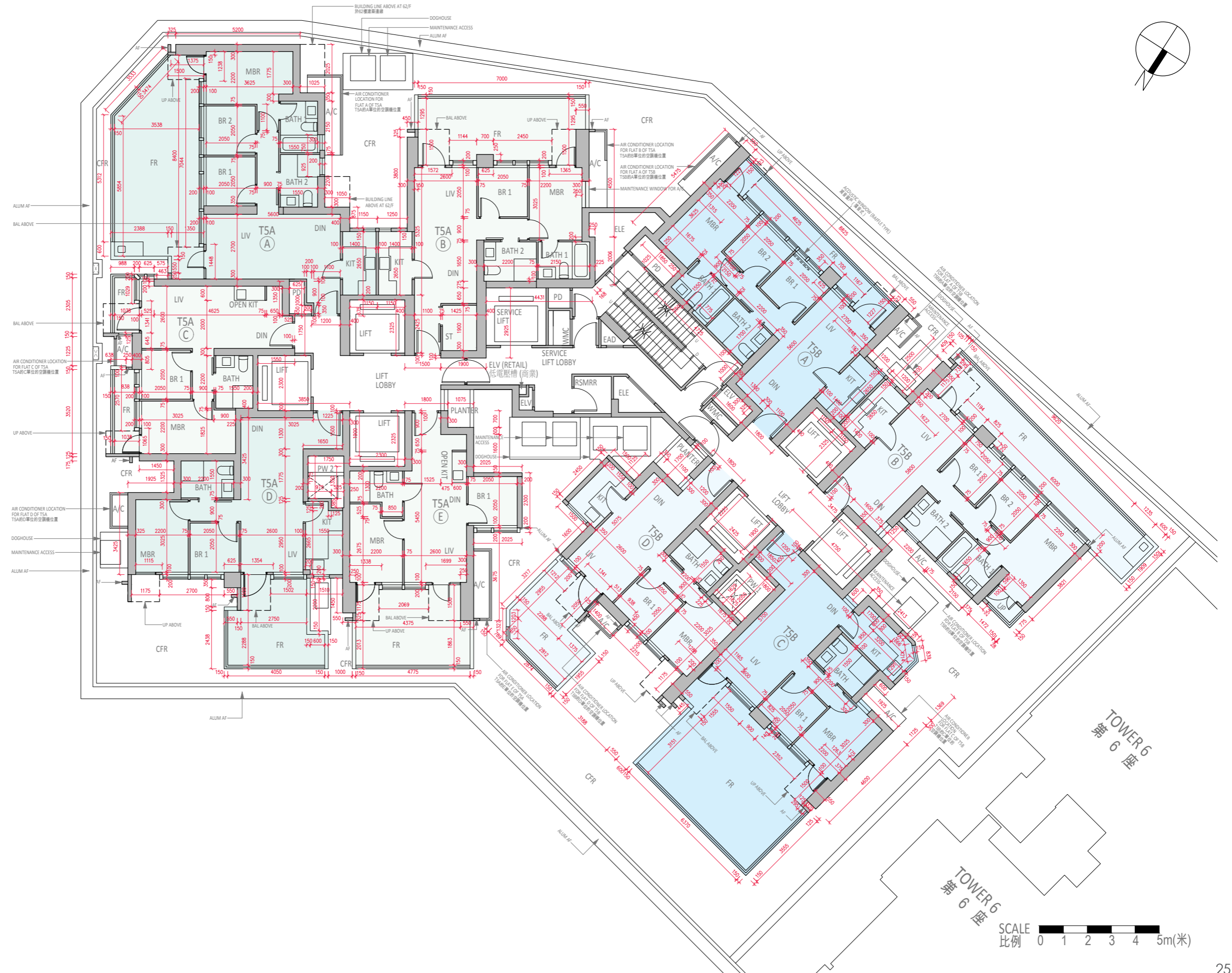
1. The dimensions in the floor plans are all structural dimensions in millimetre and rounded off to the nearest integer.
2. For details of the noise mitigation measures, please refer to the Relevant Information section in this sales brochure.
3. Please refer to Page 23 of this sales brochure for legend of the terms and abbreviations shown in the floor plan.

備註：

1. 樓面平面圖之尺規所列數字為以毫米標示之建築結構尺寸，並以四捨五入至整數。
2. 有關紓緩噪音措施之詳情，請參閱本售樓說明書的有關資料章節。
3. 平面圖中顯示之名詞及簡稱之圖例請參閱本售樓說明書第23頁。

Floor plans of residential properties in the phase 期數的住宅物業的樓面平面圖

Tower 5 (5A & 5B)
第5座 (5A及5B) 7/F
7樓



Floor plans of residential properties in the phase 期數的住宅物業的樓面平面圖

Tower 5 (5A & 5B) 8/F-12/F, 15/F-16/F, 18/F-23/F, 25/F-33/F, 35/F-39/F, 41/F-43/F, 45/F-53/F & 55/F-61/F (13/F, 14/F, 24/F, 34/F, 44/F and 54/F are omitted)
第5座 (5A及5B) 8樓至12樓, 15樓至16樓, 18樓至23樓, 25樓至33樓, 35樓至39樓, 41樓至43樓, 45樓至53樓及55樓至61樓 (不設13樓、14樓、24樓、34樓、44樓及54樓)

| Description 描述 | Floor 樓層 | Tower 5 (5A) 第5座 (5A) | | | | | Tower 5 (5B) 第5座 (5B) | | | |
|---|---|--|----------------------------------|---|---|---|---|---|----------------------------------|-------------------|
| | | Flat 單位 | | | | | Flat 單位 | | | |
| | | A | B | C | D | E | A | B | C | D |
| Floor-to-floor height (refers to the height between the top surface of the structural slab of a floor and the top surface of the structural slab of its immediate upper floor) of each residential property (m) 每個住宅物業的層與層之間的高度 (指該樓層之石屎地台面與上一層石屎地台面之高度距離) (米) | 8/F-12/F, 15/F, 18/F-23/F, 25/F-33/F, 35/F-38/F, 41/F-43/F, 45/F-53/F & 55/F-60/F 8樓至12樓、15樓、18樓至23樓、25樓至33樓、35樓至38樓、41樓至43樓、45樓至53樓及55樓至60樓 | 3.035 | | | | | 3.035 | | | |
| | 16/F 16樓 | 3.035 3.335 3.385 | 3.035 3.135 3.335 3.385 | 3.035, 3.110 3.135, 3.335 3.385, 3.435 3.485 | 3.035 3.110 3.210 3.335 3.435 | 3.035 3.135 3.160 3.285 3.360 | 3.035 3.135 3.335 3.385 | | 3.035 3.135 3.335 3.360 | |
| | 39/F 39樓 | 3.035 3.335 3.385 | 3.035 3.135 3.335 3.385 | 3.035, 3.110 3.135, 3.335 3.360, 3.385 3.485 | 3.035 3.110 3.135 3.335 3.360 | 3.035 3.135 3.160 3.285 3.360 | 3.035 3.135 3.335 3.385 | | 3.035 3.135 3.335 3.360 | |
| | 61/F 61樓 | 3.040, 3.090 3.290, 3.390 3.440, 3.640 3.690, 3.740 | 3.390 | 3.090, 3.390 3.540, 3.690 3.715, 3.740 3.840 | 3.390 | 3.390 | 3.040 3.140 3.290 3.340 3.390 3.490 3.740 | 3.040, 3.190 3.315, 3.340 3.390, 3.490 3.565, 3.690 3.740 | 3.390 | |
| Thickness of the floor slabs (excluding plaster) of each residential property (mm) 每個住宅物業的樓板 (不包括灰泥) 厚度 (毫米) | 8/F-12/F, 15/F, 18/F-23/F, 25/F-33/F, 35/F-38/F, 41/F-43/F, 45/F-53/F & 55/F-60/F 8樓至12樓、15樓、18樓至23樓、25樓至33樓、35樓至38樓、41樓至43樓、45樓至53樓及55樓至60樓 | 150 300 | | 150 175 | | 150 175 300 | 150 | 150 300 | | 150 175 300 |
| | 16/F 16樓 | 150 300 | | 150 250 | 150 175 250 | 150 175 300 | 150 | 150 300 | | 150 175 300 |
| | 39/F 39樓 | 150 300 | | 150 175 250 | | 150 175 300 | 150 | 150 300 | | 150 175 300 |
| | 61/F 61樓 | 150 200 300 | 150 300 | 150 175 | | 150 175 300 | 150 300 | 150 300 | | 150 175 300 |

The internal areas of the residential properties on the upper floors will generally be slightly larger than those on the lower floors because of the reducing thickness of the structural walls on the upper floors (Note: This statement as required under section 10(2)(e) of Part 1 of Schedule 1 to the Residential Properties (First-hand Sales) Ordinance is not applicable to the Phase).

因住宅物業的較高樓層的結構牆的厚度遞減，較高樓層的內部面積，一般比較低樓層的內部面積稍大(備註：此《一手住宅物業銷售條例》附表1第1部第10(2)(e)條規定之陳述並不適用於期數)。

Remarks :

- The dimensions in the floor plans are all structural dimensions in millimetre and rounded off to the nearest integer.
- For details of the noise mitigation measures, please refer to the Relevant Information section in this sales brochure.
- Please refer to Page 23 of this sales brochure for legend of the terms and abbreviations shown in the floor plan.

備註：

- 樓面平面圖之尺規所列數字為以毫米標示之建築結構尺寸，並以四捨五入至整數。
- 有關舒緩噪音措施之詳情，請參閱本售樓說明書的有關資料章節。
- 平面圖中顯示之名稱及簡稱之圖例請參閱本售樓說明書第23頁。

Floor plans of residential properties in the phase 期數的住宅物業的樓面平面圖

Tower 5 (5A & 5B)
8/F-12/F, 15/F-16/F,
18/F-23/F, 25/F-33/F,
35/F-39/F, 41/F-43/F,
45/F-53/F & 55/F-61/F
(13/F, 14/F, 24/F, 34/F, 44/F
and 54/F are omitted)

第5座 (5A及5B)
8樓至12樓, 15樓至16樓,
18樓至23樓, 25樓至33樓,
35樓至39樓, 41樓至43樓,
45樓至53樓及55樓至61樓
(不設13樓、14樓、24樓、
34樓、44樓及54樓)



Floor plans of residential properties in the phase 期數的住宅物業的樓面平面圖

Tower 5 (5A & 5B) 62/F
第5座 (5A及5B) 62樓

| Description 描述 | Tower 5 (5A) 第5座 (5A) | | | | Tower 5 (5B) 第5座 (5B) | | |
|---|----------------------------------|------------|----------------------------------|---|---|----------------------------------|----------------------------------|
| | Flat 單位 | | | | Flat 單位 | | |
| | A | B | D | E | A | C | D |
| Floor-to-floor height (refers to the height between the top surface of the structural slab of a floor and the top surface of the structural slab of its immediate upper floor) of each residential property (m) 每個住宅物業的層與層之間的高度 (指該樓層之石屎地台面與上一層石屎地台面之高度距離) (米) | 3.500 3.600 3.800 3.850 | | 3.500 3.600 3.800 3.825 | 3.500 3.600 3.625 3.750 3.825 | 3.500 3.600 3.700 3.750 3.850 | 3.500 3.600 3.800 3.850 | 3.500 3.600 3.800 3.825 |
| Thickness of the floor slabs (excluding plaster) of each residential property (mm) 每個住宅物業的樓板 (不包括灰泥) 厚度 (毫米) | 175 200 250 300 | 200 300 | 200 | 200 300 | 200 300 | | |

The internal areas of the residential properties on the upper floors will generally be slightly larger than those on the lower floors because of the reducing thickness of the structural walls on the upper floors (Note: This statement as required under section 10(2)(e) of Part 1 of Schedule 1 to the Residential Properties (First-hand Sales) Ordinance is not applicable to the Phase).

因住宅物業的較高樓層的結構牆的厚度遞減，較高樓層的內部面積，一般比較低樓層的內部面積稍大(備註：此《一手住宅物業銷售條例》附表1第1部第10(2)(e)條規定之陳述並不適用於期數)。

Remarks :

1. The dimensions in the floor plans are all structural dimensions in millimetre and rounded off to the nearest integer.
2. For details of the noise mitigation measures, please refer to the Relevant Information section in this sales brochure.
3. Please refer to Page 23 of this sales brochure for legend of the terms and abbreviations shown in the floor plan.

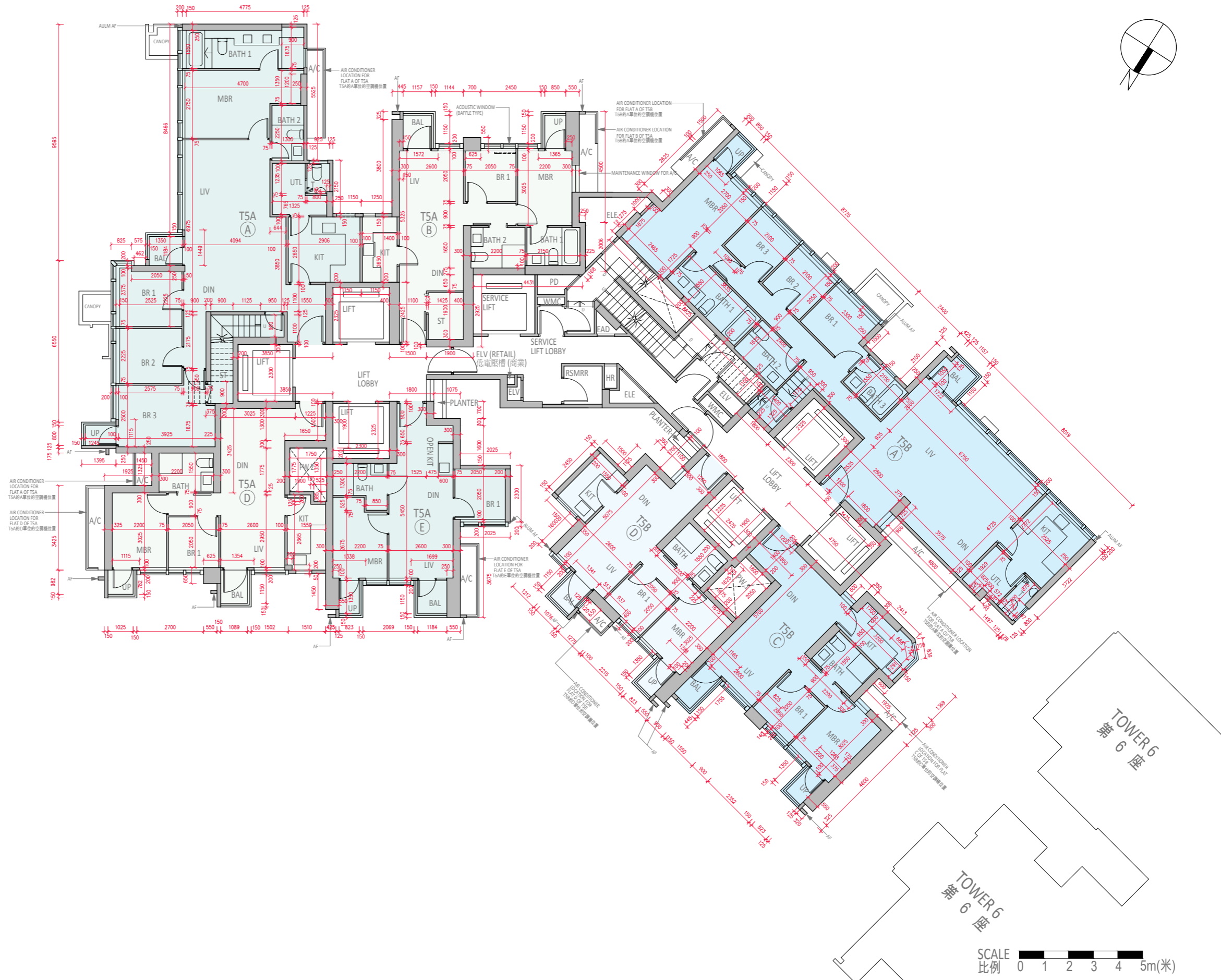
備註：

1. 樓面平面圖之尺規所列數字為以毫米標示之建築結構尺寸，並以四捨五入至整數。
2. 有關紓緩噪音措施之詳情，請參閱本售樓說明書的有關資料章節。
3. 平面圖中顯示之名詞及簡稱之圖例請參閱本售樓說明書第23頁。

Floor plans of residential properties in the phase 期數的住宅物業的樓面平面圖

Tower 5 (5A & 5B)
第5座 (5A及5B)

62/F
62樓



Floor plans of residential properties in the phase 期數的住宅物業的樓面平面圖

Tower 5 (5A & 5B) ROOF
第5座 (5A及5B) 天台

| Description 描述 | Tower 5 (5A) 第5座 (5A) | | | | Tower 5 (5B) 第5座 (5B) | | |
|---|-----------------------|---|---|---|-----------------------|---|---|
| | Flat 單位 | | | | Flat 單位 | | |
| | A | B | D | E | A | C | D |
| Floor-to-floor height (refers to the height between the top surface of the structural slab of a floor and the top surface of the structural slab of its immediate upper floor) of each residential property (m) 每個住宅物業的層與層之間的高度 (指該樓層之石屎地台面與上一層石屎地台面之高度距離) (米) | Not Applicable 不適用 | | | | Not Applicable 不適用 | | |
| Thickness of the floor slabs (excluding plaster) of each residential property (mm) 每個住宅物業的樓板 (不包括灰泥) 厚度 (毫米) | Not Applicable 不適用 | | | | Not Applicable 不適用 | | |

The internal areas of the residential properties on the upper floors will generally be slightly larger than those on the lower floors because of the reducing thickness of the structural walls on the upper floors (Note: This statement as required under section 10(2)(e) of Part 1 of Schedule 1 to the Residential Properties (First-hand Sales) Ordinance is not applicable to the Phase).

因住宅物業的較高樓層的結構牆的厚度遞減，較高樓層的內部面積，一般比較低樓層的內部面積稍大(備註：此《一手住宅物業銷售條例》附表1第1部第10(2)(e)條規定之陳述並不適用於期數)。

Remarks :

1. The dimensions in the floor plans are all structural dimensions in millimetre and rounded off to the nearest integer.
2. For details of the noise mitigation measures, please refer to the Relevant Information section in this sales brochure.
3. Please refer to Page 23 of this sales brochure for legend of the terms and abbreviations shown in the floor plan.

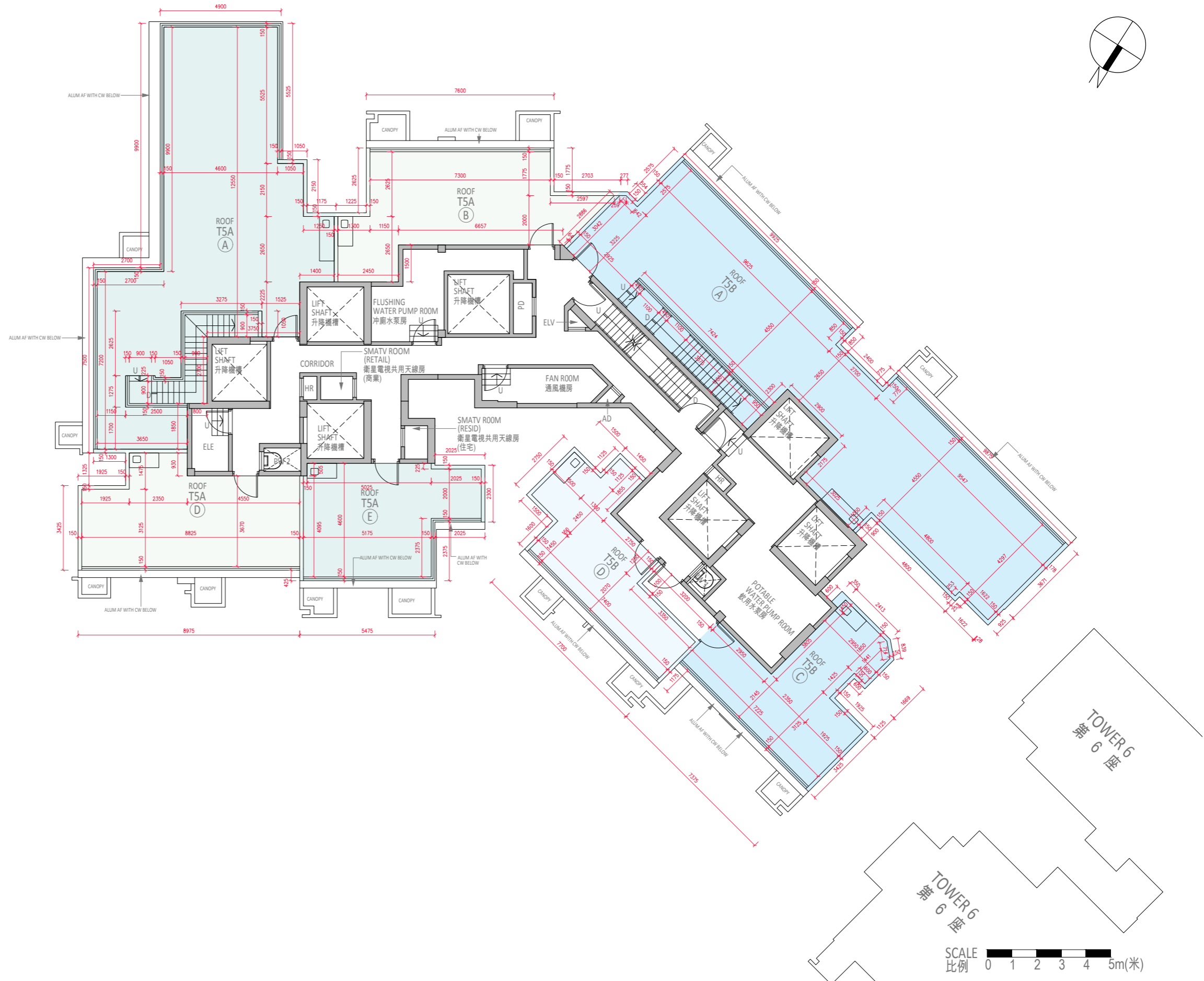
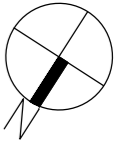
備註：

1. 樓面平面圖之尺規所列數字為以毫米標示之建築結構尺寸，並以四捨五入至整數。
2. 有關紓緩噪音措施之詳情，請參閱本售樓說明書的有關資料章節。
3. 平面圖中顯示之名詞及簡稱之圖例請參閱本售樓說明書第23頁。

Floor plans of residential properties in the phase 期數的住宅物業的樓面平面圖

Tower 5 (5A & 5B)
第5座 (5A及5B)

ROOF
天台



Floor plans of residential properties in the phase 期數的住宅物業的樓面平面圖

Tower 6 (6A & 6B) 7/F
第6座 (6A及6B) 7樓

| Description 描述 | Tower 6 (6A) 第6座 (6A) | | | | | Tower 6 (6B) 第6座 (6B) | | | | | |
|---|---|--|--|--|---|--|-----|--|--|----------------------------------|--|
| | Flat 單位 | | | | | Flat 單位 | | | | | |
| | A | B | C | D | E | A | C | D | E | F | |
| Floor-to-floor height (refers to the height between the top surface of the structural slab of a floor and the top surface of the structural slab of its immediate upper floor) of each residential property (m) 每個住宅物業的層與層之間的高度 (指該樓層之石屎地台面與上一層石屎地台面之高度距離) (米) | 2.735 2.935 3.035 3.185 3.235 3.435 3.535 | 2.935 3.035 3.185 3.235 3.435 3.535 | 2.710 3.035 3.210 3.285 3.435 3.535 | 2.785 3.035 3.185 3.285 3.435 3.535 | 2.735 3.035 3.235 3.435 3.535 | 2.685 3.035 3.185 3.235 3.435 3.535 | | 2.685 3.035 3.035 3.185 3.285 3.535 | 2.785 3.035 3.210 3.285 3.435 3.535 | 3.035 3.235 3.435 3.535 | |
| Thickness of the floor slabs (excluding plaster) of each residential property (mm) 每個住宅物業的樓板 (不包括灰泥) 厚度 (毫米) | 150 300 | | 150 175 | 150 | 150 200 300 | | 150 | | 150 175 | 150 200 300 | |

The internal areas of the residential properties on the upper floors will generally be slightly larger than those on the lower floors because of the reducing thickness of the structural walls on the upper floors (Note: This statement as required under section 10(2)(e) of Part 1 of Schedule 1 to the Residential Properties (First-hand Sales) Ordinance is not applicable to the Phase).

因住宅物業的較高樓層的結構牆的厚度遞減，較高樓層的內部面積，一般比較低樓層的內部面積稍大(備註：此《一手住宅物業銷售條例》附表1第1部第10(2)(e)條規定之陳述並不適用於期數)。

Remarks :

1. The dimensions in the floor plans are all structural dimensions in millimetre and rounded off to the nearest integer.
2. For details of the noise mitigation measures, please refer to the Relevant Information section in this sales brochure.
3. Please refer to Page 23 of this sales brochure for legend of the terms and abbreviations shown in the floor plan.

備註：

1. 樓面平面圖之尺規所列數字為以毫米標示之建築結構尺寸，並以四捨五入至整數。
2. 有關紓緩噪音措施之詳情，請參閱本售樓說明書的有關資料章節。
3. 平面圖中顯示之名詞及簡稱之圖例請參閱本售樓說明書第23頁。

Floor plans of residential properties in the phase
期數的住宅物業的樓面平面圖

Tower 6 (6A & 6B)
第6座 (6A及6B)

7/F
7樓



TOWER 7
第 7 座

TOWER 7
第 7 座

SCALE
比例 0 1 2 3 4 5m(米)

Floor plans of residential properties in the phase 期數的住宅物業的樓面平面圖

Tower 6 (6A & 6B) 8/F-12/F, 15/F-16/F, 18/F-23/F, 25/F-33/F & 35/F-39/F (13/F, 14/F, 24/F and 34/F are omitted)
第6座 (6A及6B) 8樓至12樓, 15樓至16樓, 18樓至23樓, 25樓至33樓及35樓至39樓 (不設13樓、14樓、24樓及34樓)

| Description 描述 | Floor 樓層 | Tower 6 (6A) 第6座 (6A) | | | | | Tower 6 (6B) 第6座 (6B) | | | | |
|---|--|----------------------------------|-------------------------|----------------------------------|----------------------------------|---|----------------------------------|-------------------------|----------------------------------|-------------------------|---|
| | | Flat 單位 | | | | | Flat 單位 | | | | |
| | | A | B | C | D | E | A | C | D | E | F |
| Floor-to-floor height (refers to the height between the top surface of the structural slab of a floor and the top surface of the structural slab of its immediate upper floor) of each residential property (m) 每個住宅物業的層與層之間的高度 (指該樓層之石屎地台面與上一層石屎地台面之高度距離) (米) | 8/F-12/F, 15/F, 18/F-23/F, 25/F-33/F & 35/F-38/F 8樓至12樓、15樓、18樓至23樓、25樓至33樓及35樓至38樓 | 3.035 | | | | | 3.035 | | | | |
| | 16/F 16樓 | 3.035 3.135 3.335 3.385 | 3.035 3.135 3.360 | 3.035 3.135 3.285 3.385 | 3.035 3.135 3.335 | 3.035 3.135 3.235 3.335 3.485 | 3.035 3.135 3.335 3.385 | 3.035 3.135 3.385 | 3.035 3.135 3.285 3.360 | 3.035 3.135 3.335 | |
| | 39/F 39樓 | 3.035 3.135 3.335 3.385 | 3.035 3.135 3.360 | 3.035 3.135 3.385 | 3.035 3.085 3.185 3.385 | 3.035 3.135 3.335 3.385 | 3.035 3.135 3.385 | 3.035 3.135 3.385 | 3.035 3.135 3.285 3.360 | 3.035 3.135 3.335 | |
| Thickness of the floor slabs (excluding plaster) of each residential property (mm) 每個住宅物業的樓板 (不包括灰泥) 厚度 (毫米) | 8/F-12/F, 15/F, 18/F-23/F, 25/F-33/F & 35/F-38/F 8樓至12樓、15樓、18樓至23樓、25樓至33樓及35樓至38樓 | 150 300 | 150 175 | 150 | 150 200 300 | 150 | | 150 175 | 150 200 300 | | |
| | 16/F 16樓 | 150 300 | 150 175 | 150 | 150 200 300 | 150 250 | 150 | 150 175 | 150 200 300 | | |
| | 39/F 39樓 | 150 300 | 150 175 | 150 250 | 150 200 250 300 | 150 | | 150 175 | 150 200 300 | | |

The internal areas of the residential properties on the upper floors will generally be slightly larger than those on the lower floors because of the reducing thickness of the structural walls on the upper floors (Note: This statement as required under section 10(2)(e) of Part 1 of Schedule 1 to the Residential Properties (First-hand Sales) Ordinance is not applicable to the Phase).

因住宅物業的較高樓層的結構牆的厚度遞減，較高樓層的內部面積，一般比較低樓層的內部面積稍大(備註：此《一手住宅物業銷售條例》附表1第1部第10(2)(e)條規定之陳述並不適用於期數)。

Remarks :

- The dimensions in the floor plans are all structural dimensions in millimetre and rounded off to the nearest integer.
- For details of the noise mitigation measures, please refer to the Relevant Information section in this sales brochure.
- Please refer to Page 23 of this sales brochure for legend of the terms and abbreviations shown in the floor plan.

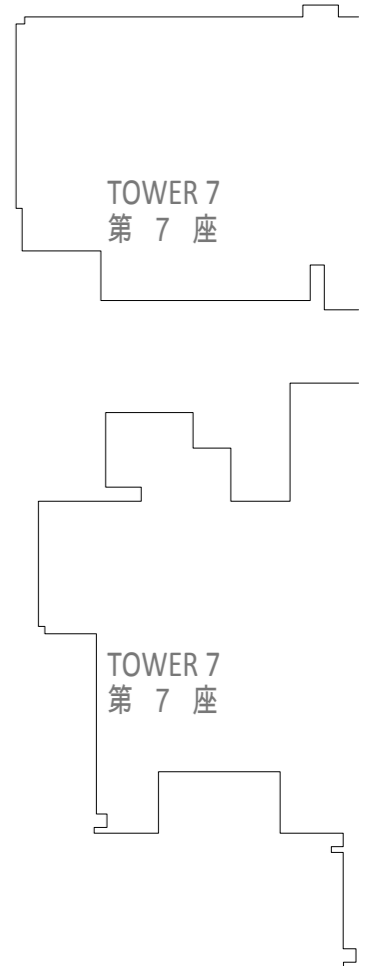
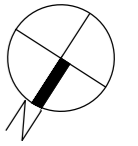
備註：

- 樓面平面圖之尺規所列數字為以毫米標示之建築結構尺寸，並以四捨五入至整數。
- 有關紓緩噪音措施之詳情，請參閱本售樓說明書的有關資料章節。
- 平面圖中顯示之名詞及簡稱之圖例請參閱本售樓說明書第23頁。

Floor plans of residential properties in the phase 期數的住宅物業的樓面平面圖

Tower 6 (6A & 6B)
8/F-12/F, 15/F-16/F,
18/F-23/F, 25/F-33/F &
35/F-39/F
(13/F, 14/F, 24/F and
34/F are omitted)

第6座 (6A及6B)
8樓至12樓, 15樓至16樓,
18樓至23樓, 25樓至33樓
及35樓至39樓
(不設13樓、14樓、24樓
及34樓)



SCALE
比例 0 1 2 3 4 5m(米)

Floor plans of residential properties in the phase 期數的住宅物業的樓面平面圖

Tower 6 (6A & 6B) 41/F-43/F, 45/F-53/F & 55/F-61/F (44/F and 54/F are omitted)
第6座 (6A及6B) 41樓至43樓, 45樓至53樓及55樓至61樓 (不設44樓及54樓)

| Description 描述 | Floor 樓層 | Tower 6 (6A) 第6座 (6A) | | | | | Tower 6 (6B) 第6座 (6B) | | | |
|---|--|--|---|-------|-------------------|-----|-----------------------|-------------------|---|---|
| | | Flat 單位 | | | | | Flat 單位 | | | |
| | | A | B | C | D | E | A | C | E | F |
| Floor-to-floor height (refers to the height between the top surface of the structural slab of a floor and the top surface of the structural slab of its immediate upper floor) of each residential property (m) 每個住宅物業的層與層之間的高度 (指該樓層之石屎地台面與上一層石屎地台面之高度距離) (米) | 41/F-43/F, 45/F-53/F & 55/F-60/F 41樓至43樓, 45樓至53樓及55樓至60樓 | 3.035 | | | | | 3.035 | | | |
| | 61/F 61樓 | 3.040 3.140 3.190 3.340 3.390 3.490 3.640 3.740 | 3.040 3.190 3.340 3.390 3.490 3.690 3.740 | 3.390 | | | 3.390 | | | |
| Thickness of the floor slabs (excluding plaster) of each residential property (mm) 每個住宅物業的樓板 (不包括灰泥) 厚度 (毫米) | 41/F-43/F, 45/F-53/F & 55/F-60/F 41樓至43樓, 45樓至53樓及55樓至60樓 | 150 300 | 150 175 | 150 | 150 200 300 | 150 | 150 175 | 150 200 300 | | |
| | 61/F 61樓 | 150 300 | 150 175 | 150 | 150 200 300 | 150 | 150 175 | 150 200 300 | | |

The internal areas of the residential properties on the upper floors will generally be slightly larger than those on the lower floors because of the reducing thickness of the structural walls on the upper floors (Note: This statement as required under section 10(2)(e) of Part 1 of Schedule 1 to the Residential Properties (First-hand Sales) Ordinance is not applicable to the Phase).

因住宅物業的較高樓層的結構牆的厚度遞減，較高樓層的內部面積，一般比較低樓層的內部面積稍大(備註：此《一手住宅物業銷售條例》附表1第1部第10(2)(e)條規定之陳述並不適用於期數)。

Remarks :

- The dimensions in the floor plans are all structural dimensions in millimetre and rounded off to the nearest integer.
- For details of the noise mitigation measures, please refer to the Relevant Information section in this sales brochure.
- Please refer to Page 23 of this sales brochure for legend of the terms and abbreviations shown in the floor plan.

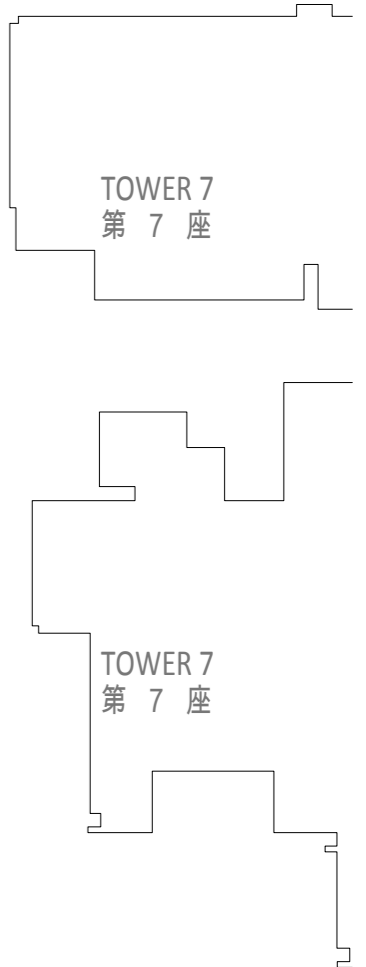
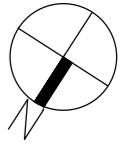
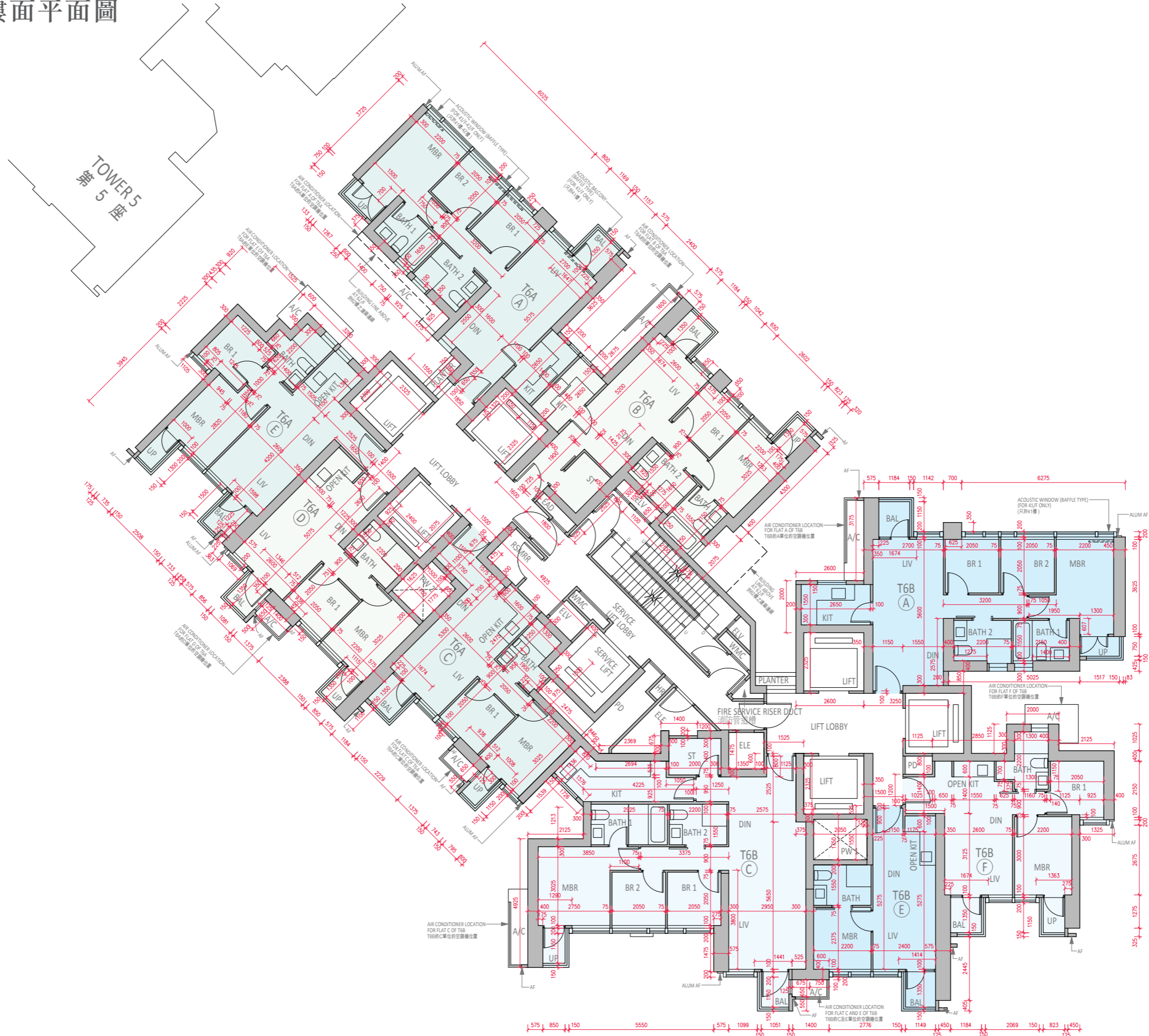
備註：

- 樓面平面圖之尺規所列數字為以毫米標示之建築結構尺寸，並以四捨五入至整數。
- 有關紓緩噪音措施之詳情，請參閱本售樓說明書的有關資料章節。
- 平面圖中顯示之名詞及簡稱之圖例請參閱本售樓說明書第23頁。

Floor plans of residential properties in the phase 期數的住宅物業的樓面平面圖

Tower 6 (6A & 6B)
41/F-43/F,
45/F-53/F &
55/F-61/F
(44/F and 54/F
are omitted)

第6座 (6A及6B)
41樓至43樓,
45樓至53樓及
55樓至61樓
(不設44樓及54樓)



SCALE
比例 0 1 2 3 4 5m(米)

Floor plans of residential properties in the phase 期數的住宅物業的樓面平面圖

Tower 6 (6A & 6B) 62/F
第6座 (6A及6B) 62樓

| Description 描述 | Tower 6 (6A) 第6座 (6A) | | | | Tower 6 (6B) 第6座 (6B) | | | |
|---|----------------------------------|-------------------------|----------------------------------|-------------------------|----------------------------------|---|----------------------------------|-------------------------|
| | Flat 單位 | | | | Flat 單位 | | | |
| | A | C | D | E | A | C | E | F |
| Floor-to-floor height (refers to the height between the top surface of the structural slab of a floor and the top surface of the structural slab of its immediate upper floor) of each residential property (m) 每個住宅物業的層與層之間的高度 (指該樓層之石屎地台面與上一層石屎地台面之高度距離) (米) | 3.500 3.600 3.700 3.850 | 3.500 3.600 3.825 | 3.500 3.600 3.750 3.850 | 3.500 3.600 3.800 | 3.500 3.600 3.800 3.850 | 3.500 3.600 3.625 3.750 3.850 | 3.500 3.600 3.750 3.825 | 3.500 3.600 3.800 |
| Thickness of the floor slabs (excluding plaster) of each residential property (mm) 每個住宅物業的樓板 (不包括灰泥) 厚度 (毫米) | 200 300 | 200 | 200 250 | 200 300 | 200 | | | 200 300 |

The internal areas of the residential properties on the upper floors will generally be slightly larger than those on the lower floors because of the reducing thickness of the structural walls on the upper floors (Note: This statement as required under section 10(2)(e) of Part 1 of Schedule 1 to the Residential Properties (First-hand Sales) Ordinance is not applicable to the Phase).

因住宅物業的較高樓層的結構牆的厚度遞減，較高樓層的內部面積，一般比較低樓層的內部面積稍大(備註：此《一手住宅物業銷售條例》附表1第1部第10(2)(e)條規定之陳述並不適用於期數)。

Remarks :

1. The dimensions in the floor plans are all structural dimensions in millimetre and rounded off to the nearest integer.
2. For details of the noise mitigation measures, please refer to the Relevant Information section in this sales brochure.
3. Please refer to Page 23 of this sales brochure for legend of the terms and abbreviations shown in the floor plan.

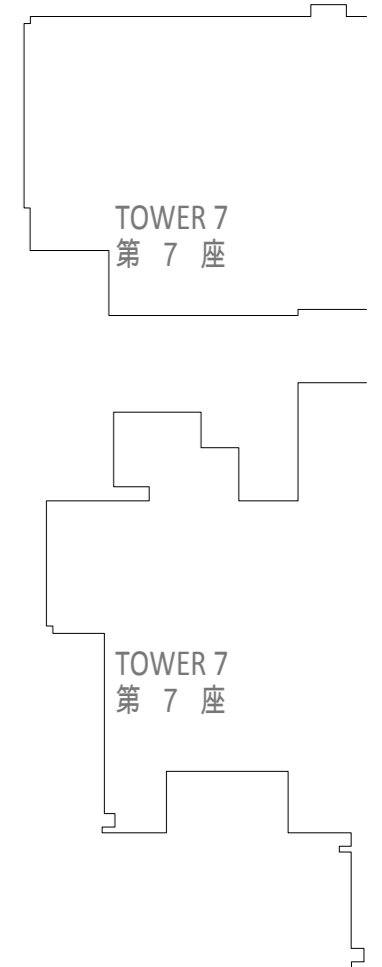
備註：

1. 樓面平面圖之尺規所列數字為以毫米標示之建築結構尺寸，並以四捨五入至整數。
2. 有關紓緩噪音措施之詳情，請參閱本售樓說明書的有關資料章節。
3. 平面圖中顯示之名詞及簡稱之圖例請參閱本售樓說明書第23頁。

Floor plans of residential properties in the phase 期數的住宅物業的樓面平面圖

Tower 6 (6A & 6B)
第6座 (6A及6B)

62/F
62樓



SCALE
比例 0 1 2 3 4 5m(米)

Floor plans of residential properties in the phase 期數的住宅物業的樓面平面圖

Tower 6 (6A & 6B) ROOF
第6座 (6A及6B) 天台

| Description 描述 | Tower 6 (6A) 第6座 (6A) | | | | Tower 6 (6B) 第6座 (6B) | | | |
|---|-----------------------|---|---|---|-----------------------|---|---|---|
| | Flat 單位 | | | | Flat 單位 | | | |
| | A | C | D | E | A | C | E | F |
| Floor-to-floor height (refers to the height between the top surface of the structural slab of a floor and the top surface of the structural slab of its immediate upper floor) of each residential property (m) 每個住宅物業的層與層之間的高度 (指該樓層之石屎地台面與上一層石屎地台面之高度距離) (米) | Not Applicable 不適用 | | | | Not Applicable 不適用 | | | |
| Thickness of the floor slabs (excluding plaster) of each residential property (mm) 每個住宅物業的樓板 (不包括灰泥) 厚度 (毫米) | Not Applicable 不適用 | | | | Not Applicable 不適用 | | | |

The internal areas of the residential properties on the upper floors will generally be slightly larger than those on the lower floors because of the reducing thickness of the structural walls on the upper floors (Note: This statement as required under section 10(2)(e) of Part 1 of Schedule 1 to the Residential Properties (First-hand Sales) Ordinance is not applicable to the Phase).

因住宅物業的較高樓層的結構牆的厚度遞減，較高樓層的內部面積，一般比較低樓層的內部面積稍大(備註：此《一手住宅物業銷售條例》附表1第1部第10(2)(e)條規定之陳述並不適用於期數)。

Remarks :

1. The dimensions in the floor plans are all structural dimensions in millimetre and rounded off to the nearest integer.
2. For details of the noise mitigation measures, please refer to the Relevant Information section in this sales brochure.
3. Please refer to Page 23 of this sales brochure for legend of the terms and abbreviations shown in the floor plan.

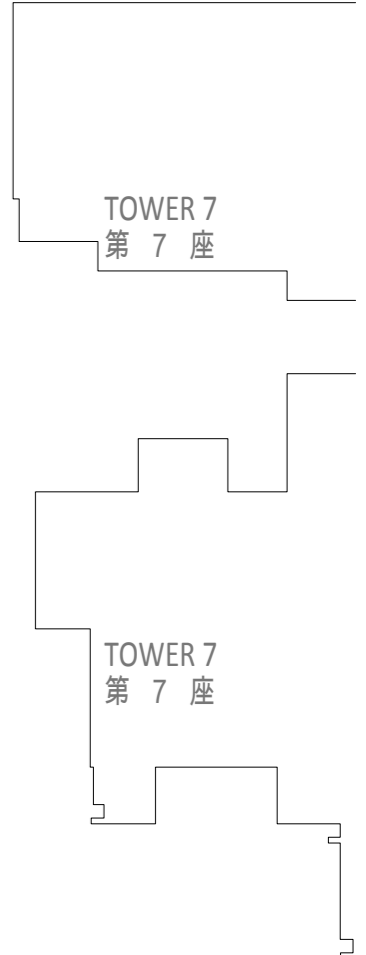
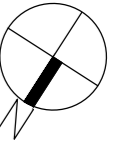
備註：

1. 樓面平面圖之尺規所列數字為以毫米標示之建築結構尺寸，並以四捨五入至整數。
2. 有關紓緩噪音措施之詳情，請參閱本售樓說明書的有關資料章節。
3. 平面圖中顯示之名詞及簡稱之圖例請參閱本售樓說明書第23頁。

Floor plans of residential properties in the phase
期數的住宅物業的樓面平面圖

Tower 6 (6A & 6B)
第6座 (6A及6B)

ROOF
天台



SCALE
比例 0 1 2 3 4 5m(米)

Floor plans of residential properties in the phase 期數的住宅物業的樓面平面圖

Tower 7 (7A & 7B) 7/F
第7座 (7A及7B) 7樓

| Description 描述 | Tower 7 (7A) 第7座 (7A) | | | | | | Tower 7 (7B) 第7座 (7B) | | | | |
|---|---|--|---|---|-----|--|-----------------------|---|---|--|---|
| | Flat 單位 | | | | | | Flat 單位 | | | | |
| | A | B | C | D | E | F | A | B | C | D | E |
| Floor-to-floor height (refers to the height between the top surface of the structural slab of a floor and the top surface of the structural slab of its immediate upper floor) of each residential property (m) 每個住宅物業的層與層之間的高度 (指該樓層之石屎地台面與上一層石屎地台面之高度距離) (米) | 3.035 3.185 3.235 3.435 3.535 | 2.935 3.035 3.185 3.235 3.435 3.535 | 3.035 3.235 3.285 3.435 3.535 | 2.785 2.935 3.035 3.210 3.285 3.435 3.535 | | 2.685 3.035 3.210 3.185 3.435 3.535 | 3.035 | 3.035 3.185 3.235 3.435 3.535 | 2.710 3.035 3.210 3.435 3.535 | 2.685 2.735 2.935 3.035 3.185 3.235 3.435 3.535 | 3.035 3.210 3.235 3.435 3.535 |
| Thickness of the floor slabs (excluding plaster) of each residential property (mm) 每個住宅物業的樓板 (不包括灰泥) 厚度 (毫米) | 150 300 | 150 | 150 200 300 | 150 175 | 150 | 150 175 | 150 | 150 300 | 150 175 | 150 300 | 150 175 300 |

The internal areas of the residential properties on the upper floors will generally be slightly larger than those on the lower floors because of the reducing thickness of the structural walls on the upper floors (Note: This statement as required under section 10(2)(e) of Part 1 of Schedule 1 to the Residential Properties (First-hand Sales) Ordinance is not applicable to the Phase).

因住宅物業的較高樓層的結構牆的厚度遞減，較高樓層的內部面積，一般比較低樓層的內部面積稍大(備註：此《一手住宅物業銷售條例》附表1第1部第10(2)(e)條規定之陳述並不適用於期數)。

Remarks :

1. The dimensions in the floor plans are all structural dimensions in millimetre and rounded off to the nearest integer.
2. For details of the noise mitigation measures, please refer to the Relevant Information section in this sales brochure.
3. Please refer to Page 23 of this sales brochure for legend of the terms and abbreviations shown in the floor plan.

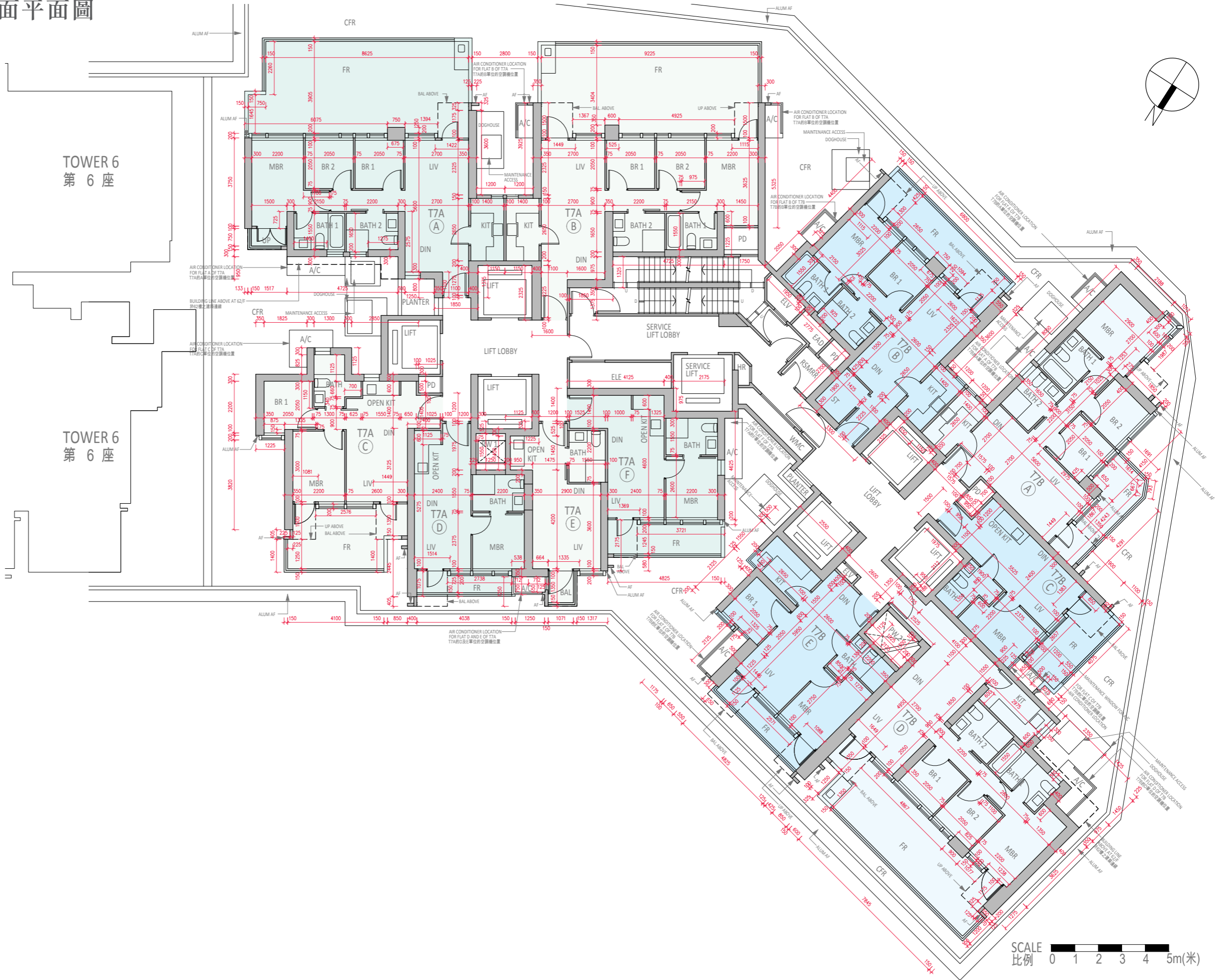
備註：

1. 樓面平面圖之尺規所列數字為以毫米標示之建築結構尺寸，並以四捨五入至整數。
2. 有關紓緩噪音措施之詳情，請參閱本售樓說明書的有關資料章節。
3. 平面圖中顯示之名詞及簡稱之圖例請參閱本售樓說明書第23頁。

Floor plans of residential properties in the phase 期數的住宅物業的樓面平面圖

Tower 7 (7A & 7B)
第7座 (7A及7B)

7/F
7樓



SCALE
比例 0 1 2 3 4 5m(米)

Floor plans of residential properties in the phase 期數的住宅物業的樓面平面圖

Tower 7 (7A & 7B) 8/F-12/F, 15/F-16/F, 18/F-23/F, 25/F-33/F, 35/F-39/F, 41/F-43/F, 45/F-53/F & 55/F-61/F (13/F, 14/F, 24/F, 34/F, 44/F and 54/F are omitted)
第7座 (7A及7B) 8樓至12樓, 15樓至16樓, 18樓至23樓, 25樓至33樓, 35樓至39樓, 41樓至43樓, 45樓至53樓及55樓至61樓 (不設13樓、14樓、24樓、34樓、44樓及54樓)

| Description 描述 | Floor 樓層 | Tower 7 (7A) 第7座 (7A) | | | | | | Tower 7 (7B) 第7座 (7B) | | | | |
|---|---|--|---|----------------------------------|-------------------|----------------------------------|---|----------------------------------|--|---|----------------------------------|-------------------|
| | | Flat 單位 | | | | | | Flat 單位 | | | | |
| | | A | B | C | D | E | F | A | B | C | D | E |
| Floor-to-floor height (refers to the height between the top surface of the structural slab of a floor and the top surface of the structural slab of its immediate upper floor) of each residential property (m) 每個住宅物業的層與層之間的高度 (指該樓層之石屎地台面與上一層石屎地台面之高度距離) (米) | 8/F-12/F, 15/F, 18/F-23/F, 25/F-33/F, 35/F-38/F, 41/F-43/F, 45/F-53/F & 55/F-60/F 8樓至12樓、15樓、18樓至23樓、25樓至33樓、35樓至38樓、41樓至43樓、45樓至53樓及55樓至60樓 | 3.035 | | | | | | 3.035 | | | | |
| | 16/F 16樓 | 3.035 3.135 3.335 3.385 | 3.035 3.135 3.285 3.335 | 3.035 3.135 3.285 3.360 | 3.035 3.385 | 3.035 3.135 3.335 3.360 | 3.035 3.135 3.235 3.335 3.485 | 3.035 3.135 3.335 3.385 | 3.035 3.135 3.135 3.360 | 3.035 3.135 3.335 3.385 | 3.035 3.135 3.335 3.360 | |
| | 39/F 39樓 | 3.035 3.135 3.335 3.385 | 3.035 3.135 3.285 3.335 | 3.035 3.135 3.285 3.360 | 3.035 3.385 | 3.035 3.135 3.335 3.360 | 3.035 3.135 3.235 3.335 3.485 | 3.035 3.135 3.335 3.385 | 3.035 3.110 3.210 3.360 3.435 | 3.035 3.135 3.335 3.385 | 3.035 3.135 3.335 3.360 | |
| | 61/F 61樓 | 3.040, 3.190 3.290, 3.340 3.390, 3.490 3.640, 3.740 | 3.040, 3.190 3.340, 3.390 3.490, 3.690 3.740 | 3.390 | | | 3.390 | | 3.090, 3.265 3.290, 3.390 3.490, 3.640 3.690, 3.740 | 3.090, 3.210 3.390, 3.490 3.500, 3.715 3.800 | | |
| Thickness of the floor slabs (excluding plaster) of each residential property (mm) 每個住宅物業的樓板 (不包括灰泥) 厚度 (毫米) | 8/F-12/F, 15/F, 18/F-23/F, 25/F-33/F, 35/F-38/F, 41/F-43/F, 45/F-53/F & 55/F-60/F 8樓至12樓、15樓、18樓至23樓、25樓至33樓、35樓至38樓、41樓至43樓、45樓至53樓及55樓至60樓 | 150 300 | 150 | 150 200 300 | 150 175 300 | 150 | 150 175 | 150 | 150 300 | 150 175 | 150 300 | 150 175 300 |
| | 16/F 16樓 | 150 300 | 150 | 150 200 300 | 150 175 300 | 150 | 150 175 | 150 250 | 150 300 | 150 175 | 150 300 | 150 175 300 |
| | 39/F 39樓 | 150 300 | 150 | 150 200 300 | 150 175 300 | 150 | 150 175 | 150 250 | 150 300 | 150 175 225 250 | 150 300 | 150 175 300 |
| | 61/F 61樓 | 150 300 | 150 | 150 200 300 | 150 175 300 | 150 | 150 175 | 150 | 150 300 | 150 175 | 150 300 | 150 200 300 |

The internal areas of the residential properties on the upper floors will generally be slightly larger than those on the lower floors because of the reducing thickness of the structural walls on the upper floors (Note: This statement as required under section 10(2)(e) of Part 1 of Schedule 1 to the Residential Properties (First-hand Sales) Ordinance is not applicable to the Phase).

因住宅物業的較高樓層的結構牆的厚度遞減，較高樓層的內部面積，一般比較低樓層的內部面積稍大(備註：此《一手住宅物業銷售條例》附表1第1部第10(2)(e)條規定之陳述並不適用於期數)。

Remarks :

- The dimensions in the floor plans are all structural dimensions in millimetre and rounded off to the nearest integer.
- For details of the noise mitigation measures, please refer to the Relevant Information section in this sales brochure.
- Please refer to Page 23 of this sales brochure for legend of the terms and abbreviations shown in the floor plan.

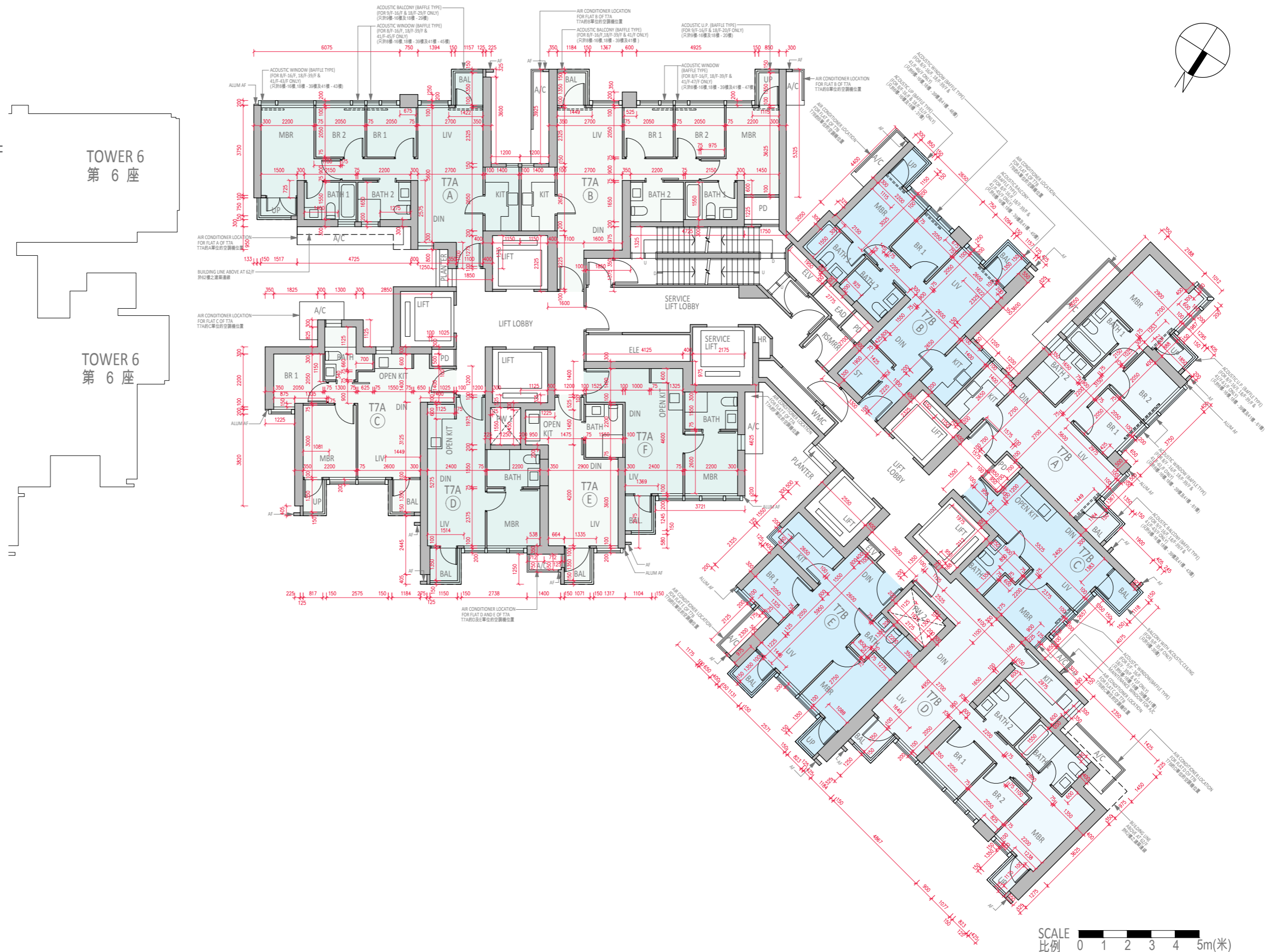
備註：

- 樓面平面圖之尺規所列數字為以毫米標示之建築結構尺寸，並以四捨五入至整數。
- 有關紓緩噪音措施之詳情，請參閱本售樓說明書的有關資料章節。
- 平面圖中顯示之名稱及簡稱之圖例請參閱本售樓說明書第23頁。

Floor plans of residential properties in the phase 期數的住宅物業的樓面平面圖

Tower 7 (7A & 7B)
8/F-12/F, 15/F-16/F,
18/F-23/F, 25/F-33/F,
35/F-39/F, 41/F-43/F,
45/F-53/F & 55/F-61/F
(13/F, 14/F, 24/F, 34/F, 44/F
and 54/F are omitted)

第7座 (7A及7B)
8樓至12樓, 15樓至16樓,
18樓至23樓, 25樓至33樓,
35樓至39樓, 41樓至43樓,
45樓至53樓及55樓至61樓
(不設13樓、14樓、24樓、
34樓、44樓及54樓)



Floor plans of residential properties in the phase 期數的住宅物業的樓面平面圖

Tower 7 (7A & 7B) 62/F
第7座 (7A及7B) 62樓

| Description 描述 | Tower 7 (7A) 第7座 (7A) | | | | | Tower 7 (7B) 第7座 (7B) | | | |
|---|----------------------------------|----------------------------------|----------------------------------|----------------|-------------------------|----------------------------------|----------------------------------|---|--|
| | Flat 單位 | | | | | Flat 單位 | | | |
| | A | C | D | E | F | A | B | C | D |
| Floor-to-floor height (refers to the height between the top surface of the structural slab of a floor and the top surface of the structural slab of its immediate upper floor) of each residential property (m) 每個住宅物業的層與層之間的高度 (指該樓層之石屎地台面與上一層石屎地台面之高度距離) (米) | 3.500 3.600 3.700 3.850 | 3.500 3.600 3.750 3.800 | 3.500 3.600 3.750 3.825 | 3.500 3.850 | 3.500 3.600 3.825 | 3.500 3.600 3.800 3.850 | 3.500 3.600 3.600 3.825 | 3.500 3.600 3.800 3.825 3.850 | 3.500 3.600 3.625 3.800 3.825 3.850 |
| Thickness of the floor slabs (excluding plaster) of each residential property (mm) 每個住宅物業的樓板 (不包括灰泥) 厚度 (毫米) | 200 300 | 200 250 300 | 200 | 200 | 200 | 200 | 200 300 | 200 | 200 250 300 |

The internal areas of the residential properties on the upper floors will generally be slightly larger than those on the lower floors because of the reducing thickness of the structural walls on the upper floors (Note: This statement as required under section 10(2)(e) of Part 1 of Schedule 1 to the Residential Properties (First-hand Sales) Ordinance is not applicable to the Phase).

因住宅物業的較高樓層的結構牆的厚度遞減，較高樓層的內部面積，一般比較低樓層的內部面積稍大(備註：此《一手住宅物業銷售條例》附表1第1部第10(2)(e)條規定之陳述並不適用於期數)。

Remarks :

1. The dimensions in the floor plans are all structural dimensions in millimetre and rounded off to the nearest integer.
2. For details of the noise mitigation measures, please refer to the Relevant Information section in this sales brochure.
3. Please refer to Page 23 of this sales brochure for legend of the terms and abbreviations shown in the floor plan.

備註：

1. 樓面平面圖之尺規所列數字為以毫米標示之建築結構尺寸，並以四捨五入至整數。
2. 有關紓緩噪音措施之詳情，請參閱本售樓說明書的有關資料章節。
3. 平面圖中顯示之名詞及簡稱之圖例請參閱本售樓說明書第23頁。

Floor plans of residential properties in the phase 期數的住宅物業的樓面平面圖

Tower 7 (7A & 7B)
第7座 (7A及7B)

62/F
62樓



TOWER 6
第 6 座

TOWER 6
第 6 座

SCALE
比例 0 1 2 3 4 5m(米)

Floor plans of residential properties in the phase 期數的住宅物業的樓面平面圖

Tower 7 (7A & 7B) ROOF
第7座 (7A及7B) 天台

| Description 描述 | Tower 7 (7A) 第7座 (7A) | | | | | Tower 7 (7B) 第7座 (7B) | | | |
|---|-----------------------|---|---|---|---|-----------------------|---|---|---|
| | Flat 單位 | | | | | Flat 單位 | | | |
| | A | C | D | E | F | A | B | C | D |
| Floor-to-floor height (refers to the height between the top surface of the structural slab of a floor and the top surface of the structural slab of its immediate upper floor) of each residential property (m) 每個住宅物業的層與層之間的高度 (指該樓層之石屎地台面與上一層石屎地台面之高度距離) (米) | Not Applicable 不適用 | | | | | Not Applicable 不適用 | | | |
| Thickness of the floor slabs (excluding plaster) of each residential property (mm) 每個住宅物業的樓板 (不包括灰泥) 厚度 (毫米) | Not Applicable 不適用 | | | | | Not Applicable 不適用 | | | |

The internal areas of the residential properties on the upper floors will generally be slightly larger than those on the lower floors because of the reducing thickness of the structural walls on the upper floors (Note: This statement as required under section 10(2)(e) of Part 1 of Schedule 1 to the Residential Properties (First-hand Sales) Ordinance is not applicable to the Phase).

因住宅物業的較高樓層的結構牆的厚度遞減，較高樓層的內部面積，一般比較低樓層的內部面積稍大(備註：此《一手住宅物業銷售條例》附表1第1部第10(2)(e)條規定之陳述並不適用於期數)。

Remarks :

1. The dimensions in the floor plans are all structural dimensions in millimetre and rounded off to the nearest integer.
2. For details of the noise mitigation measures, please refer to the Relevant Information section in this sales brochure.
3. Please refer to Page 23 of this sales brochure for legend of the terms and abbreviations shown in the floor plan.

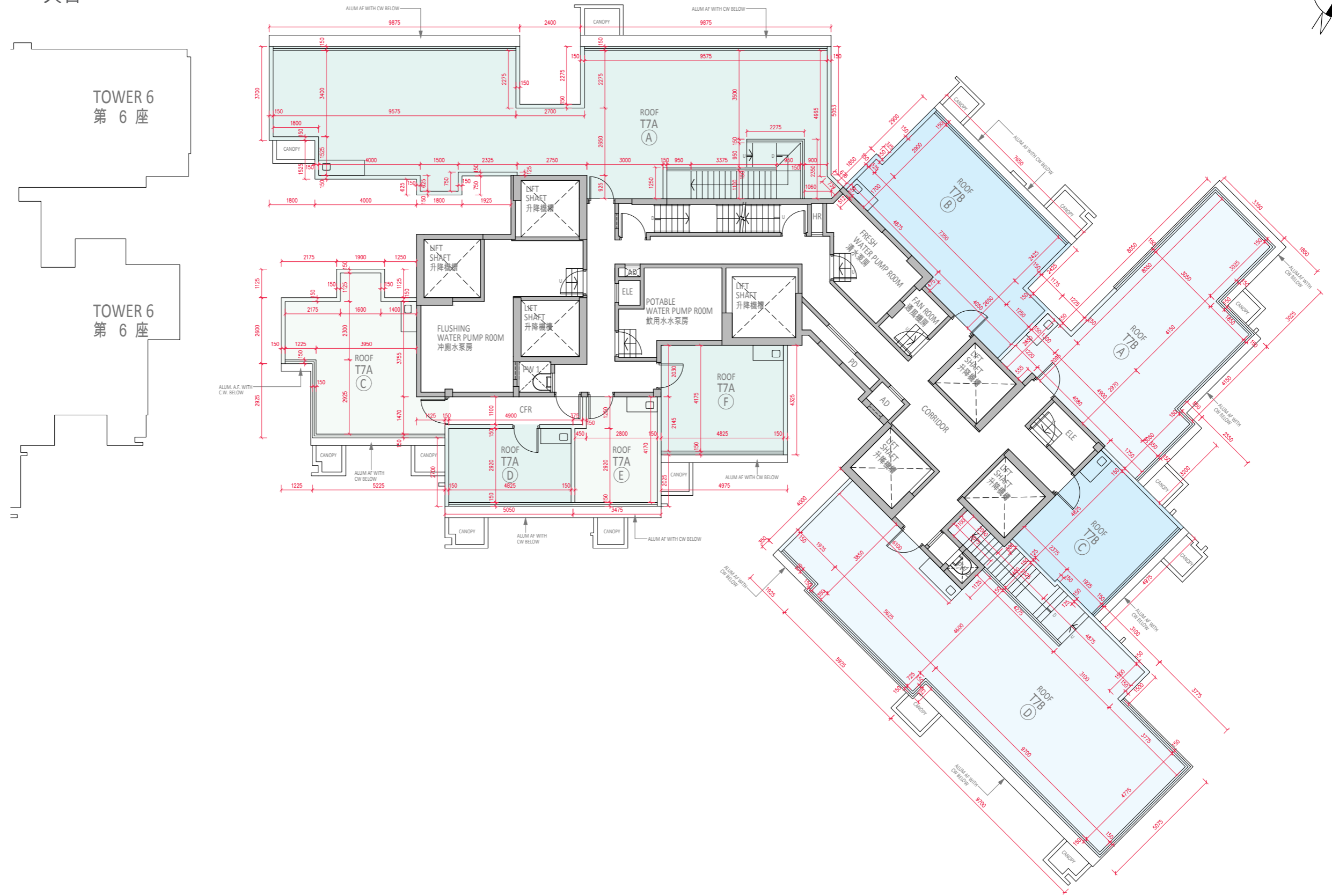
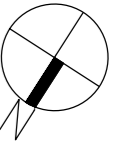
備註：

1. 樓面平面圖之尺規所列數字為以毫米標示之建築結構尺寸，並以四捨五入至整數。
2. 有關紓緩噪音措施之詳情，請參閱本售樓說明書的有關資料章節。
3. 平面圖中顯示之名詞及簡稱之圖例請參閱本售樓說明書第23頁。

Floor plans of residential properties in the phase 期數的住宅物業的樓面平面圖

Tower 7 (7A & 7B)
第7座 (7A及7B)

ROOF
天台



SCALE
比例 0 1 2 3 4 5m(米)