

Floor plans of residential properties in the phase 期數的住宅物業的樓面平面圖

Remarks applicable to the floor plans in this section:

- There are architectural features, metal grilles and/or exposed pipes on the external walls of some of the floors. For details, please refer to the latest approved building plans and/or approved drainage plans and/or other relevant plans.
- Common pipes exposed and/or enclosed in cladding are located at/adjacent to the balcony and/or utility platform and/or flat roof and/or air-conditioner platform and/or external wall of some residential properties. For details, please refer to the latest approved building plans and/or approved drainage plans and/or other relevant plans.
- There are sunken slabs for mechanical and electrical services and/or false ceiling/bulkheads for the air-conditioning fittings and/or mechanical and electrical services at some residential properties.
- There are exposed pipes installed in some stores, utility rooms, bathrooms, and toilets.
- There are pipes enclosed by the fittings and finishes in some residential properties. For details, please refer to the latest approved drainage plans and/or other relevant plans.
- The air-conditioner (outdoor unit) at air-conditioner platform may emit sounds.
- Balconies and utility platforms are non-enclosed areas.
- There are non-structural prefabricated external walls in some residential properties. The Saleable Area as defined in the formal Agreement for Sale and Purchase of a residential property has included the non-structural prefabricated external walls and is measured from the exterior of such non-structural prefabricated external walls.
- The ceiling height of some residential properties may vary due to structural, architectural and/or decoration design variations.
- During the necessary maintenance of the external walls of towers arranged by Manager of the Phase, suspended working platform will be operating in the airspace outside windows of the residential properties and above flat roof / roof of such towers.
- Symbols of fittings and fitments such as bath tub, sink, water closet, shower, sink counter, etc. in the floor plans are prepared based on the latest approved building plans and are for general indication only.

適用於本節之樓面平面圖之備註：

- 部分樓層外牆範圍設有建築裝飾、金屬格柵及/或外露喉管，詳細資料請參考最新經批准的建築圖則及/或經批准的排水設施圖則及/或其他相關圖則。
- 部分住宅物業的露台及/或工作平台及/或平台及/或空調機平台及/或外牆上/附近設有外露及/或外牆覆蓋板內藏之公用喉管，詳細資料請參考最新經批准的建築圖則及/或經批准的排水設施圖則及/或其他相關圖則。
- 部分住宅物業有用以安裝機電設備的跌級樓板及/或用以裝置空調裝備及/或其他機電設備的假天花/裝飾橫樑。
- 部分儲物房、工作間、浴室及洗手間內裝有外露喉管。
- 部分住宅物業於裝置及裝修物料內設有喉管。詳細資料請參考經批准的排水設施圖則及其他相關圖則。
- 空調機(室外機)於空調機平台可能釋放聲音。
- 露台及工作平台為不可封閉的地方。
- 部分住宅物業有非結構預製外牆。正式買賣合約之實用面積之計算包括非結構預製外牆，並由非結構預製外牆之外圍起計。
- 部分住宅物業之天花高度將會因應結構、建築設計及/或裝修設計上的需要而有差異。
- 在期數管理人安排於大廈外牆之必要維修進行期間，吊船將在該等大廈的住宅物業之窗戶外及平台/天台上之空間運作。
- 樓面平面圖上所顯示的裝置符號，如浴缸、洗滌盆、坐廁、花灑、洗滌盆櫃等乃按最新的經批准的建築圖則繪製，只作一般示意用途。

Legend for floor plans of residential properties in the Phase 期數的住宅物業的樓面平面圖圖例

ACOUSTIC BALCONY (BAFFLE TYPE)	=	減音露台(擋音式)
ACOUSTIC WINDOW (BAFFLE TYPE)	=	減音窗戶(擋音式)
ACOUSTIC UP (BAFFLE TYPE)	=	減音工作平台(擋音式)
A/C	=	Acoustic Utility Platform (Baffle Type)
AD	=	Air-conditioner Platform
AF	=	Air Duct
ALUM AF	=	Architectural Feature
ALUM AF WITH CW BELOW	=	Aluminium Architectural Feature with Curtain Wall below
BATH	=	Bathroom
BAL	=	Balcony
BAL ABOVE	=	Balcony above
BALCONY WITH ACOUSTIC CEILING	=	露台設於上方 配有減音天花的露台
BR	=	Bedroom
CANOPY	=	睡房 簷篷
CORRIDOR	=	走廊
CFR	=	Common Flat Roof
D	=	Down
DOGHOUSE	=	Mechanical and Electrical Services Duct connecting to the Floor below
DIN	=	Dining Room
EAD	=	飯廳 抽風槽
ELV	=	Exhaust Air Duct
ELE	=	Extra Low Voltage Riser Duct
FR	=	Electrical Duct / Meter Room
HR	=	Flat Roof
KIT	=	Hose Reel
LIFT	=	Kitchen
LIFT LOBBY	=	廚房 升降機 升降機大堂
LIFT MACHINE RM	=	升降機房
LIFT SHAFT	=	升降機槽
LIGHT WELL	=	光井
LIV	=	Living Room
MAINTENANCE ACCESS	=	客廳 檢修通道
MAINTENANCE WINDOW FOR A/C	=	Maintenance Window for Air-conditioner Platform
MBR	=	Master Bedroom
MJ	=	Movement Joint
OPEN KIT	=	開放式廚房
PD	=	Pipe Duct
PLANTER	=	管道槽 花槽
PW	=	Pipe Well
ROOF	=	管道井
RSMRR	=	Refuse Storage and Material Recovery Room
SERVICE LIFT	=	天台 垃圾及物料回收室
SERVICE LIFT LOBBY	=	服務升降機 服務升降機大堂
ST	=	儲物房
T	=	Toilet
T2A	=	Tower 2 (2A)
T2B	=	Tower 2 (2B)
T3A	=	Tower 3 (3A)
T3B	=	Tower 3 (3B)
U	=	Up
UP	=	Utility Platform
UP ABOVE	=	Utility Platform above
UTL	=	Utility Room
WMC	=	Water Meter Cabinet

Floor plans of residential properties in the phase 期數的住宅物業的樓面平面圖

Tower 2 (2A & 2B) 7/F
第2座 (2A及2B) 7樓

Description 描述	Tower 2 (2A) 第2座 (2A)					Tower 2 (2B) 第2座 (2B)			
	Flat 單位					Flat 單位			
	A	B	C	D	E	A	B	C	D
Floor-to-floor height (refers to the height between the top surface of the structural slab of a floor and the top surface of the structural slab of its immediate upper floor) of each residential property (m) 每個住宅物業的層與層之間的高度 (指該樓層之石屎地台面與上一層石屎地台面之高度距離) (米)	2.650 2.685 2.735 2.935 3.035 3.185 3.235 3.435 3.535	3.035 3.185 3.235 3.435 3.535	3.035 3.185 3.285 3.435 3.535	3.035 3.150 3.210 3.435 3.535	2.785 3.035 3.235 3.435 3.535	2.735 3.035 3.185 3.235 3.435 3.535	3.035 3.210 3.235 3.435 3.535	2.785 3.035 3.185 3.285 3.435 3.535	
Thickness of the floor slabs (excluding plaster) of each residential property (mm) 每個住宅物業的樓板 (不包括灰泥) 厚度 (毫米)	150	150 300	150	150 175	150 200	150 300	150 175	150	

The internal areas of the residential properties on the upper floors will generally be slightly larger than those on the lower floors because of the reducing thickness of the structural walls on the upper floors (Note: This statement as required under section 10(2)(e) of Part 1 of Schedule 1 to the Residential Properties (First-hand Sales) Ordinance is not applicable to the Phase).

因住宅物業的較高樓層的結構牆的厚度遞減，較高樓層的內部面積，一般比較低樓層的內部面積稍大(備註：此《一手住宅物業銷售條例》附表1第1部第10(2)(e)條規定之陳述並不適用於期數)。

Remarks :

1. The dimensions in the floor plans are all structural dimensions in millimetre and rounded off to the nearest integer.
2. For details of the noise mitigation measures, please refer to the Relevant Information section in this sales brochure.
3. Please refer to Page 21 of this sales brochure for legend of the terms and abbreviations shown in the floor plan.

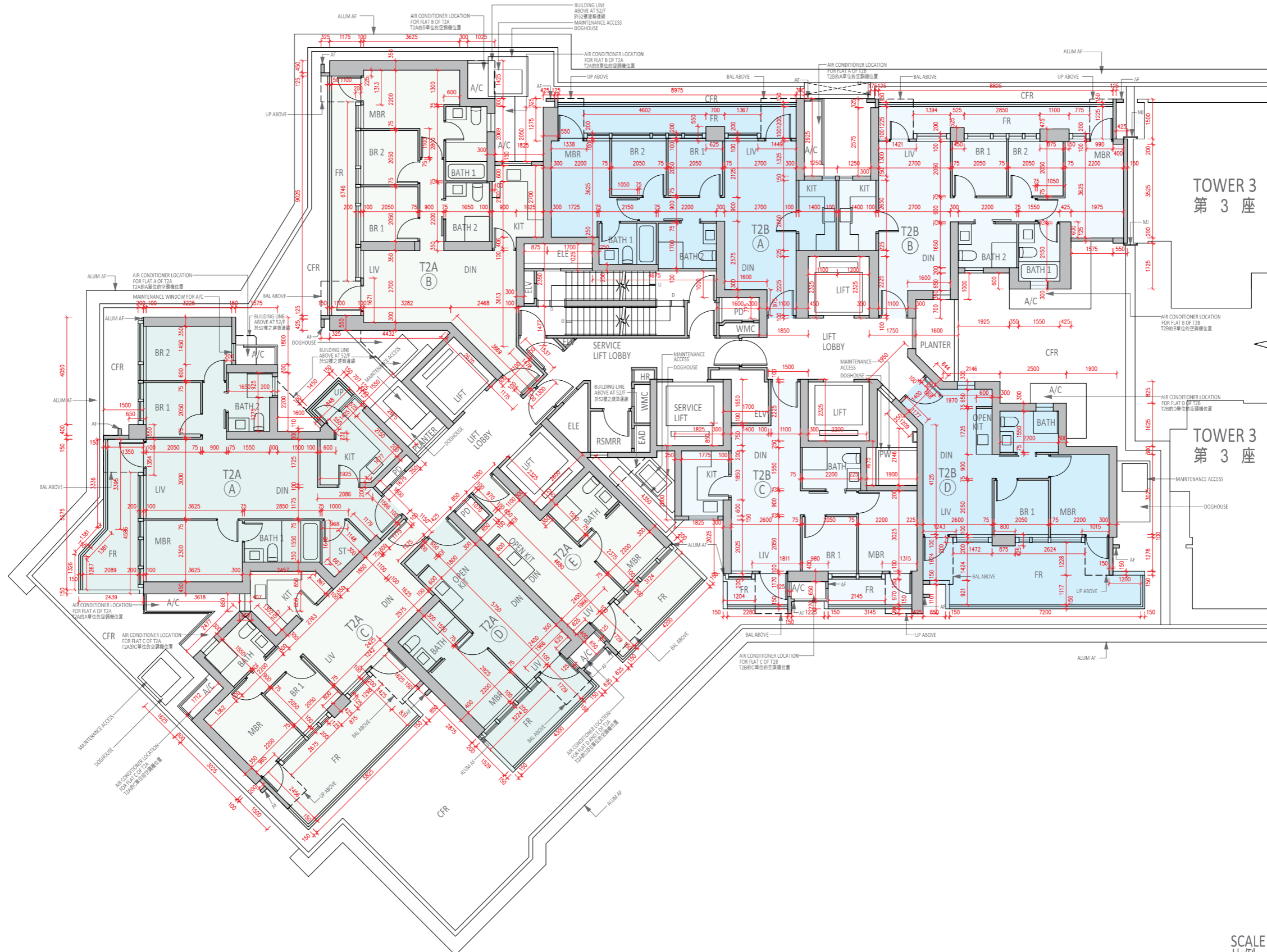
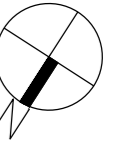
備註：

1. 樓面平面圖之尺規所列數字為以毫米標示之建築結構尺寸，並以四捨五入至整數。
2. 有關紓緩噪音措施之詳情，請參閱本售樓說明書的有關資料章節。
3. 平面圖中顯示之名詞及簡稱之圖例請參閱本售樓說明書第21頁。

Floor plans of residential properties in the phase 期數的住宅物業的樓面平面圖

Tower 2 (2A & 2B)
第2座 (2A及2B)

7/F
7樓



SCALE
比例 0 1 2 3 4 5m(米)

Floor plans of residential properties in the phase 期數的住宅物業的樓面平面圖

Tower 2 (2A & 2B)
第2座 (2A及2B)

8/F-12/F, 15/F-23/F, 25/F-29/F, 31/F-33/F, 35/F-43/F & 45/F-51/F (13/F, 14/F, 24/F, 34/F and 44/F are omitted)
8樓至12樓, 15樓至23樓, 25樓至29樓, 31樓至33樓, 35樓至43樓及45樓至51樓 (不設13樓、14樓、24樓、34樓及44樓)

Description 描述	Floor 樓層	Tower 2 (2A) 第2座 (2A)					Tower 2 (2B) 第2座 (2B)			
		Flat 單位					Flat 單位			
		A	B	C	D	E	A	B	C	D
Floor-to-floor height (refers to the height between the top surface of the structural slab of a floor and the top surface of the structural slab of its immediate upper floor) of each residential property (m) 每個住宅物業的層與層之間的高度 (指該樓層之石屎地台面與上一層石屎地台面之高度距離) (米)	8/F-12/F, 15/F-23/F, 25/F-28/F, 32/F-33/F, 35/F-43/F & 45/F-50/F 8樓至12樓、15樓至23樓、25樓至28樓、32樓至33樓、35樓至43樓及45樓至50樓	3.035					3.035			
	29/F 29樓	3.035 3.135 3.335 3.385 3.420	3.035 3.135 3.335 3.385	3.035 3.135 3.235 3.285 3.485	3.010 3.035 3.070 3.110 3.135 3.285 3.335 3.420	3.035 3.135 3.285 3.335	3.035 3.135 3.335 3.385		3.035 3.135 3.335 3.360	3.035 3.135 3.285 3.385
	31/F 31樓	2.650 2.735 3.035 3.085	3.035		2.650 2.685 3.060 3.035 3.285	3.035	3.035			
	51/F 51樓	3.250 3.500 3.600 3.800 3.850 3.885	3.145 3.150 3.200 3.500 3.600 3.800 3.850	3.150 3.250 3.400 3.500 3.600 3.750 3.850	3.475 3.500	3.500	3.150 3.500 3.600 3.800 3.850	3.500		
Thickness of the floor slabs (excluding plaster) of each residential property (mm) 每個住宅物業的樓板 (不包括灰泥) 厚度 (毫米)	8/F-12/F, 15/F-23/F, 25/F-28/F, 32/F-33/F, 35/F-43/F & 45/F-50/F 8樓至12樓、15樓至23樓、25樓至28樓、32樓至33樓、35樓至43樓及45樓至50樓	150	150 300	150	150 175	150 200	150 300		150 175	150
	29/F 29樓	150	150 300	150 250		150 200	150 250 300	150 300	150 175	150
	31/F 31樓	150	150 300	150	150 175	150 200	150 300		150 175	150
	51/F 51樓	150	150 200 300	150	150 175	150 200	150 300		150 175	150

The internal areas of the residential properties on the upper floors will generally be slightly larger than those on the lower floors because of the reducing thickness of the structural walls on the upper floors (Note: This statement as required under section 10(2)(e) of Part 1 of Schedule 1 to the Residential Properties (First-hand Sales) Ordinance is not applicable to the Phase).

因住宅物業的較高樓層的結構牆的厚度遞減，較高樓層的內部面積，一般比較低樓層的內部面積稍大(備註：此《一手住宅物業銷售條例》附表1第1部第10(2)(e)條規定之陳述並不適用於期數)。

Remarks :

- The dimensions in the floor plans are all structural dimensions in millimetre and rounded off to the nearest integer.
- For details of the noise mitigation measures, please refer to the Relevant Information section in this sales brochure.
- Please refer to Page 21 of this sales brochure for legend of the terms and abbreviations shown in the floor plan.

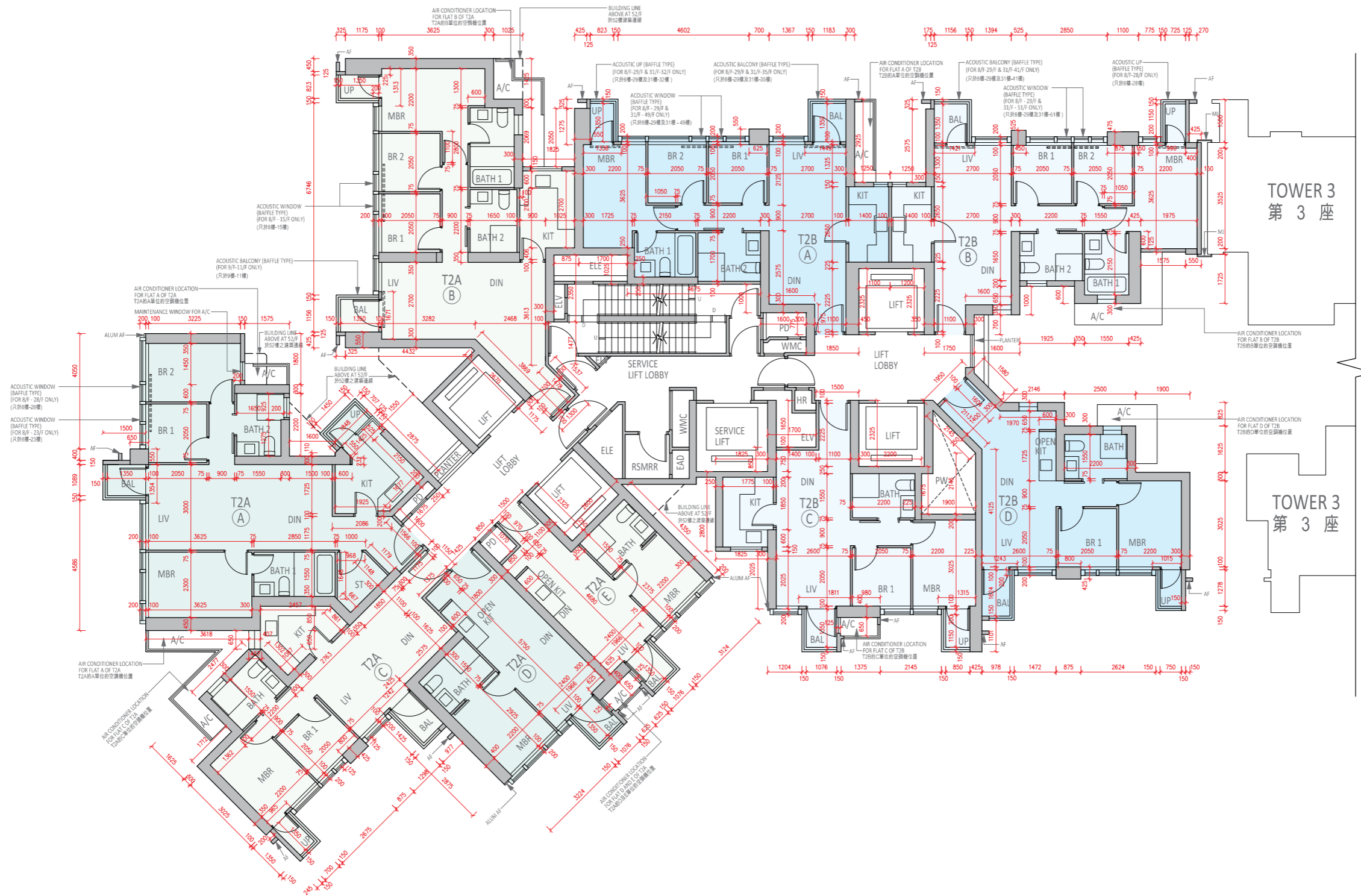
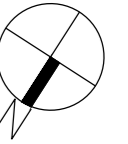
備註：

- 樓面平面圖之尺規所列數字為以毫米標示之建築結構尺寸，並以四捨五入至整數。
- 有關舒緩噪音措施之詳情，請參閱本售樓說明書的有關資料章節。
- 平面圖中顯示之名稱及簡稱之圖例請參閱本售樓說明書第21頁。

Floor plans of residential properties in the phase 期數的住宅物業的樓面平面圖

Tower 2 (2A & 2B)
第2座 (2A及2B)

8/F-12/F, 15/F-23/F, 25/F-29/F, 31/F-33/F, 35/F-43/F & 45/F-51/F (13/F, 14/F, 24/F, 34/F and 44/F are omitted)
8樓至12樓, 15樓至23樓, 25樓至29樓, 31樓至33樓, 35樓至43樓及45樓至51樓 (不設13樓、14樓、24樓、34樓及44樓)



SCALE
比例 0 1 2 3 4 5m(米)

Floor plans of residential properties in the phase 期數的住宅物業的樓面平面圖

Tower 2 (2A & 2B) 52/F
第2座 (2A及2B) 52樓

Description 描述	Tower 2 (2A) 第2座 (2A)				Tower 2 (2B) 第2座 (2B)		
	Flat 單位				Flat 單位		
	A	B	D	E	B	C	D
Floor-to-floor height (refers to the height between the top surface of the structural slab of a floor and the top surface of the structural slab of its immediate upper floor) of each residential property (m) 每個住宅物業的層與層之間的高度 (指該樓層之石屎地台面與上一層石屎地台面之高度距離) (米)	3.500	3.500	3.500	3.500	3.500	3.500	3.500
	3.600	3.600	3.600	3.600	3.600	3.600	3.600
	3.750	3.850	3.825	3.750	3.800	3.800	3.750
	3.850	3.950	3.850	3.800	3.850	3.825	3.850
Thickness of the floor slabs (excluding plaster) of each residential property (mm) 每個住宅物業的樓板 (不包括灰泥) 厚度 (毫米)	150				150		
	175		200	200	200	150	200
	200		250	300	300	200	
	300						

The internal areas of the residential properties on the upper floors will generally be slightly larger than those on the lower floors because of the reducing thickness of the structural walls on the upper floors (Note: This statement as required under section 10(2)(e) of Part 1 of Schedule 1 to the Residential Properties (First-hand Sales) Ordinance is not applicable to the Phase).

因住宅物業的較高樓層的結構牆的厚度遞減，較高樓層的內部面積，一般比較低樓層的內部面積稍大(備註：此《一手住宅物業銷售條例》附表1第1部第10(2)(e)條規定之陳述並不適用於期數)。

Remarks :

1. The dimensions in the floor plans are all structural dimensions in millimetre and rounded off to the nearest integer.
2. For details of the noise mitigation measures, please refer to the Relevant Information section in this sales brochure.
3. Please refer to Page 21 of this sales brochure for legend of the terms and abbreviations shown in the floor plan.

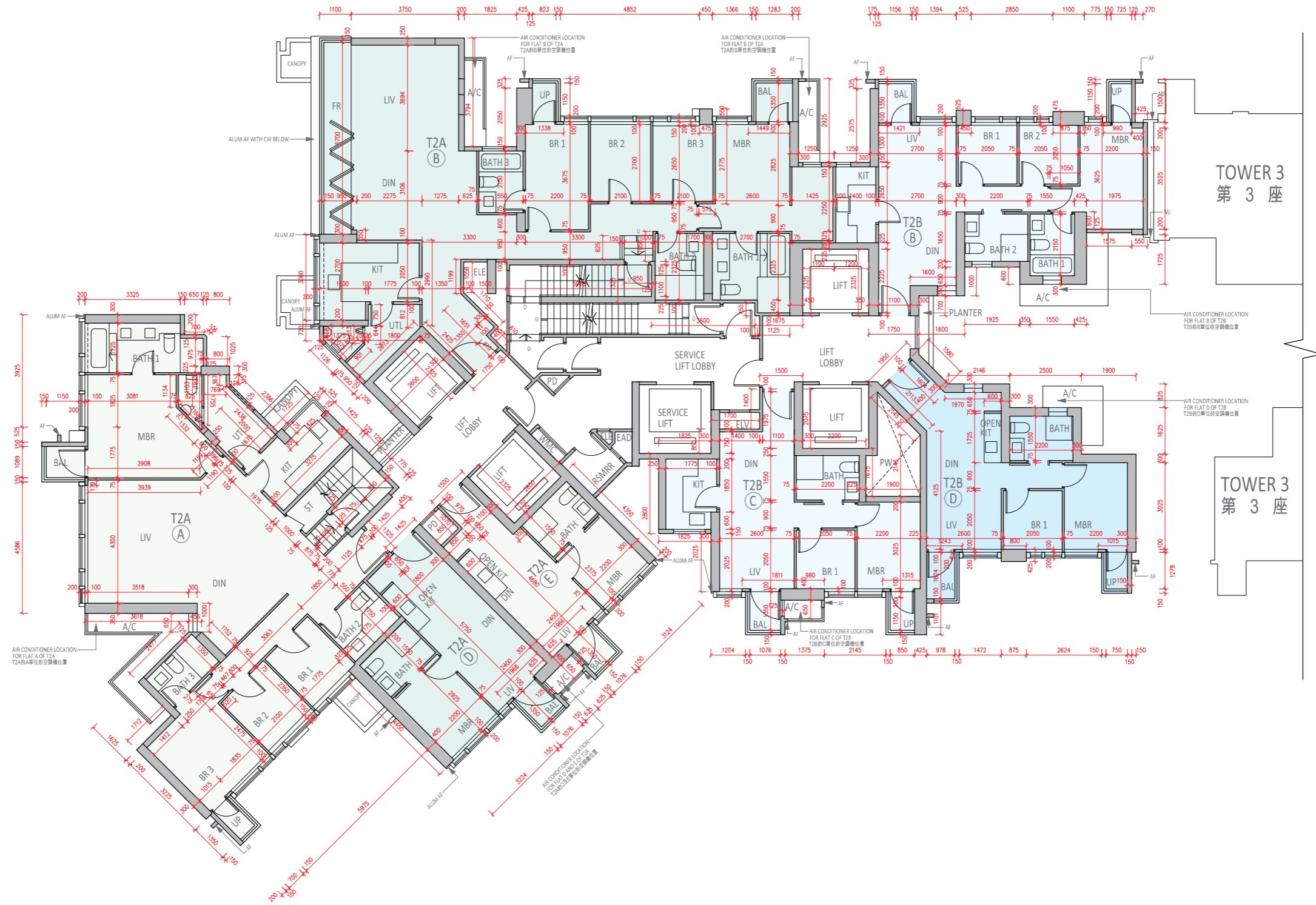
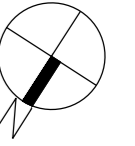
備註：

1. 樓面平面圖之尺規所列數字為以毫米標示之建築結構尺寸，並以四捨五入至整數。
2. 有關紓緩噪音措施之詳情，請參閱本售樓說明書的有關資料章節。
3. 平面圖中顯示之名詞及簡稱之圖例請參閱本售樓說明書第21頁。

Floor plans of residential properties in the phase 期數的住宅物業的樓面平面圖

Tower 2 (2A & 2B)
第2座 (2A及2B)

52/F
52樓



SCALE
比例 0 1 2 3 4 5m(米)

Floor plans of residential properties in the phase 期數的住宅物業的樓面平面圖

Tower 2 (2A & 2B)
第2座 (2A及2B)

ROOF
天台

Description 描述	Tower 2 (2A) 第2座 (2A)				Tower 2 (2B) 第2座 (2B)		
	Flat 單位				Flat 單位		
	A	B	D	E	B	C	D
Floor-to-floor height (refers to the height between the top surface of the structural slab of a floor and the top surface of the structural slab of its immediate upper floor) of each residential property (m) 每個住宅物業的層與層之間的高度 (指該樓層之石屎地台面與上一層石屎地台面之高度距離) (米)	Not Applicable 不適用				Not Applicable 不適用		
Thickness of the floor slabs (excluding plaster) of each residential property (mm) 每個住宅物業的樓板 (不包括灰泥) 厚度 (毫米)	Not Applicable 不適用				Not Applicable 不適用		

The internal areas of the residential properties on the upper floors will generally be slightly larger than those on the lower floors because of the reducing thickness of the structural walls on the upper floors (Note: This statement as required under section 10(2)(e) of Part 1 of Schedule 1 to the Residential Properties (First-hand Sales) Ordinance is not applicable to the Phase).

因住宅物業的較高樓層的結構牆的厚度遞減，較高樓層的內部面積，一般比較低樓層的內部面積稍大(備註：此《一手住宅物業銷售條例》附表1第1部第10(2)(e)條規定之陳述並不適用於期數)。

Remarks :

1. The dimensions in the floor plans are all structural dimensions in millimetre and rounded off to the nearest integer.
2. For details of the noise mitigation measures, please refer to the Relevant Information section in this sales brochure.
3. Please refer to Page 21 of this sales brochure for legend of the terms and abbreviations shown in the floor plan.

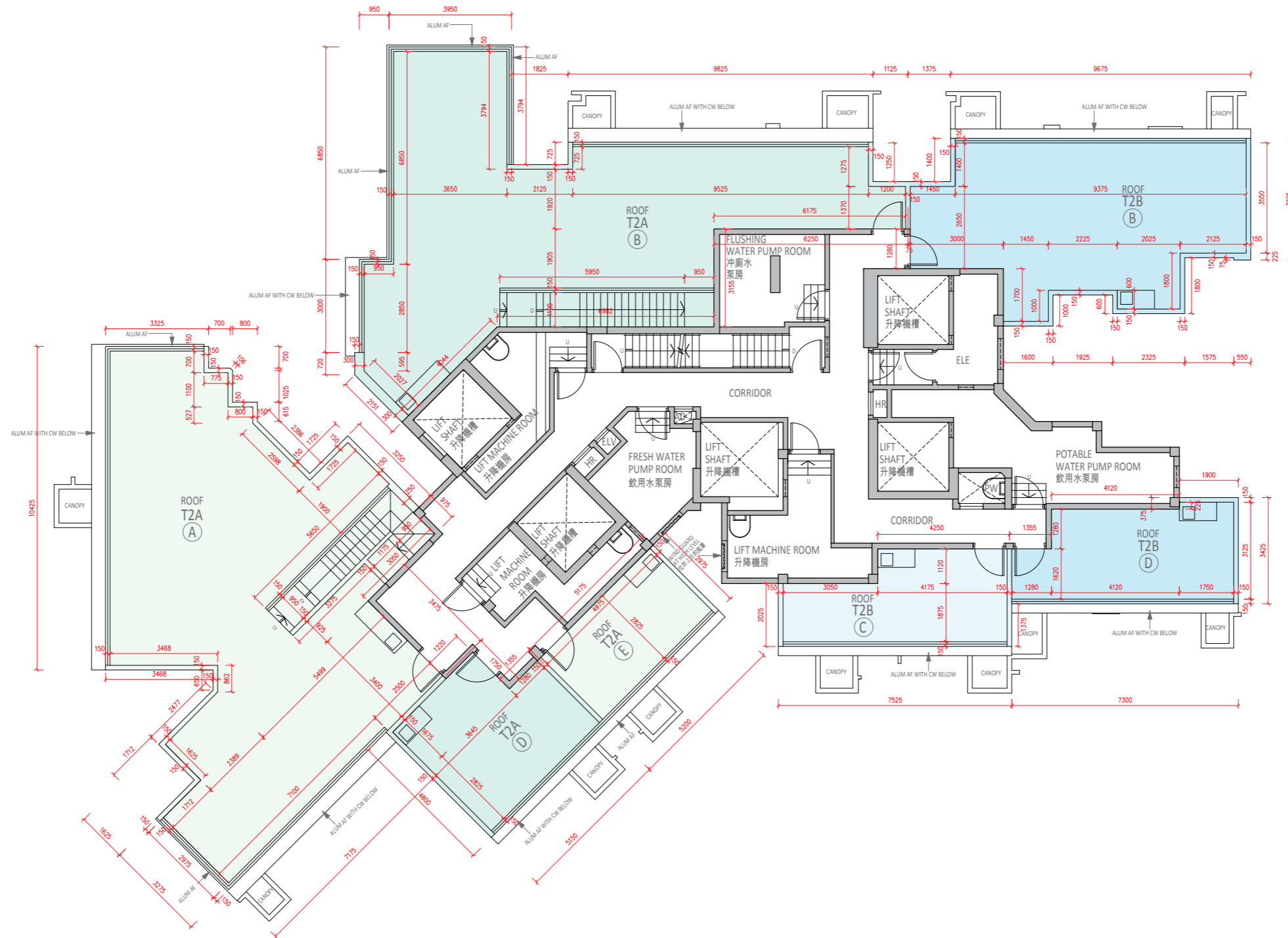
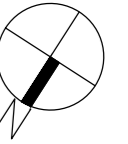
備註：

1. 樓面平面圖之尺規所列數字為以毫米標示之建築結構尺寸，並以四捨五入至整數。
2. 有關紓緩噪音措施之詳情，請參閱本售樓說明書的有關資料章節。
3. 平面圖中顯示之名詞及簡稱之圖例請參閱本售樓說明書第21頁。

Floor plans of residential properties in the phase 期數的住宅物業的樓面平面圖

Tower 2 (2A & 2B)
第2座 (2A及2B)

ROOF
天台



SCALE
比例 0 1 2 3 4 5m(米)

Floor plans of residential properties in the phase 期數的住宅物業的樓面平面圖

Tower 3 (3A & 3B) 7/F
第3座 (3A及3B) 7樓

Description 描述	Tower 3 (3A) 第3座 (3A)					Tower 3 (3B) 第3座 (3B)					
	Flat 單位					Flat 單位					
	A	B	C	D	E	A	B	C	D	E	F
Floor-to-floor height (refers to the height between the top surface of the structural slab of a floor and the top surface of the structural slab of its immediate upper floor) of each residential property (m) 每個住宅物業的層與層之間的高度 (指該樓層之石屎地台面與上一層石屎地台面之高度距離) (米)	2.685 3.035 3.185 3.235 3.435 3.535	3.035 3.185 3.235 3.435 3.535	3.035 3.285 3.435 3.535	3.035 3.210 3.435 3.535	3.035 3.285 3.435 3.535	3.035 3.185 3.235 3.435 3.535	3.035 3.210 3.285 3.435 3.535	3.035 3.185 3.235 3.435 3.535	3.035 3.210 3.285 3.435 3.535	3.035 3.185 3.235 3.435 3.535	3.035 3.210 3.285 3.435 3.535
Thickness of the floor slabs (excluding plaster) of each residential property (mm) 每個住宅物業的樓板 (不包括灰泥) 厚度 (毫米)	150 300	150	150 300	150 175	150 175	150 300	150 175 300	150	150 175 300	150	150 175

The internal areas of the residential properties on the upper floors will generally be slightly larger than those on the lower floors because of the reducing thickness of the structural walls on the upper floors (Note: This statement as required under section 10(2)(e) of Part 1 of Schedule 1 to the Residential Properties (First-hand Sales) Ordinance is not applicable to the Phase).

因住宅物業的較高樓層的結構牆的厚度遞減，較高樓層的內部面積，一般比較低樓層的內部面積稍大(備註：此《一手住宅物業銷售條例》附表1第1部第10(2)(e)條規定之陳述並不適用於期數)。

Remarks :

1. The dimensions in the floor plans are all structural dimensions in millimetre and rounded off to the nearest integer.
2. For details of the noise mitigation measures, please refer to the Relevant Information section in this sales brochure.
3. Please refer to Page 21 of this sales brochure for legend of the terms and abbreviations shown in the floor plan.

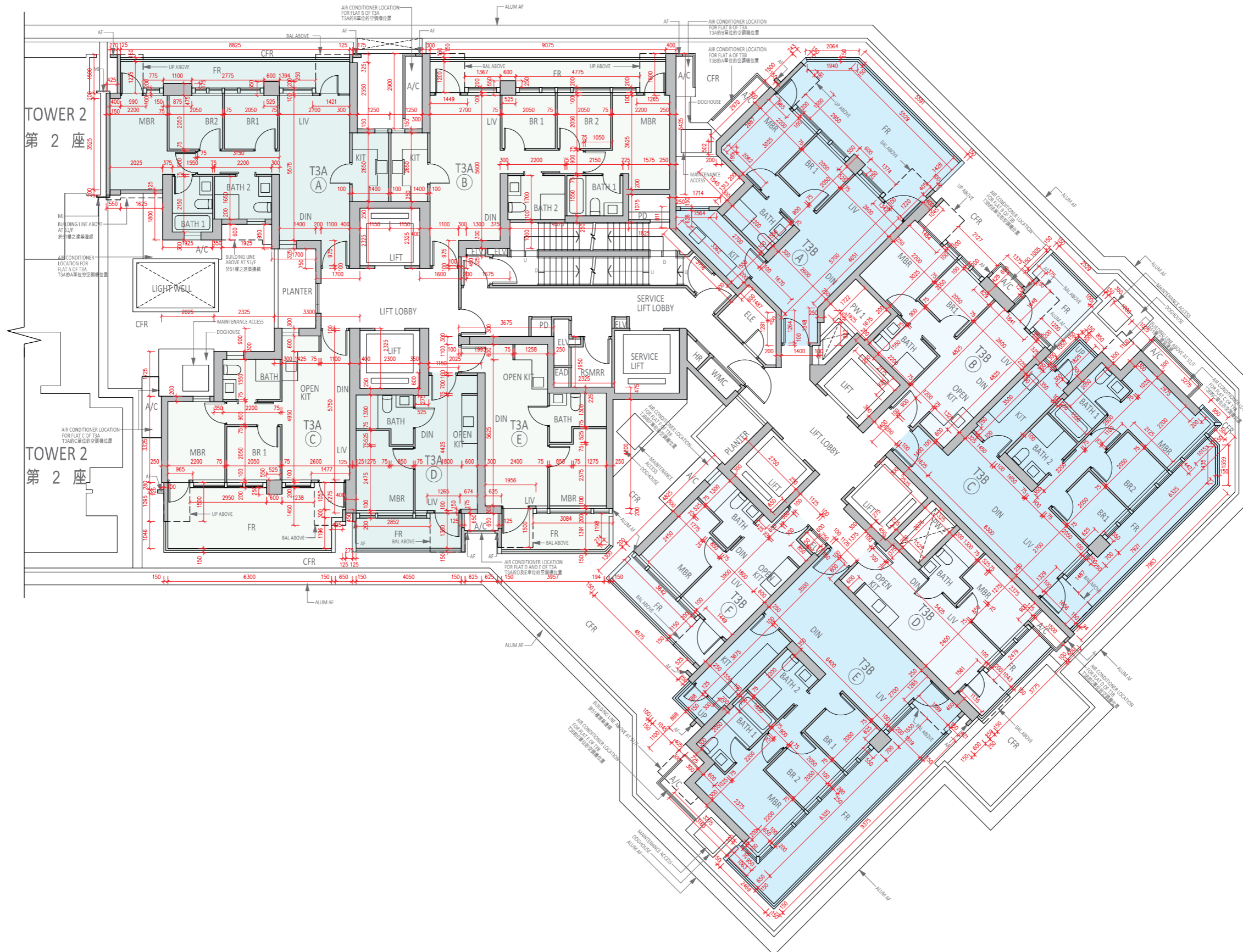
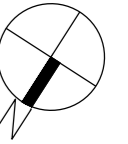
備註：

1. 樓面平面圖之尺規所列數字為以毫米標示之建築結構尺寸，並以四捨五入至整數。
2. 有關紓緩噪音措施之詳情，請參閱本售樓說明書的有關資料章節。
3. 平面圖中顯示之名詞及簡稱之圖例請參閱本售樓說明書第21頁。

Floor plans of residential properties in the phase 期數的住宅物業的樓面平面圖

Tower 3 (3A & 3B)
第3座 (3A及3B)

7/F
7樓



SCALE
比例 0 1 2 3 4 5m(米)

Floor plans of residential properties in the phase 期數的住宅物業的樓面平面圖

Tower 3 (3A & 3B)
第3座 (3A及3B)

8/F-12/F, 15/F-23/F, 25/F-29/F, 31/F-33/F, 35/F-43/F & 45/F-50/F (13/F, 14/F, 24/F, 34/F and 44/F are omitted)
8樓至12樓, 15樓至23樓, 25樓至29樓, 31樓至33樓, 35樓至43樓及45樓至50樓 (不設13樓、14樓、24樓、34樓及44樓)

Description 描述	Floor 樓層	Tower 3 (3A) 第3座 (3A)					Tower 3 (3B) 第3座 (3B)					
		Flat 單位					Flat 單位					
		A	B	C	D	E	A	B	C	D	E	F
Floor-to-floor height (refers to the height between the top surface of the structural slab of a floor and the top surface of the structural slab of its immediate upper floor) of each residential property (m) 每個住宅物業的層與層之間的高度 (指該樓層之石屎地台面與上一層石屎地台面之高度距離) (米)	8/F-12/F, 15/F-23/F, 25/F-28/F, 31/F-33/F, 35/F-43/F & 45/F-49/F 8樓至12樓、15樓至23樓、25樓至28樓、31樓至33樓、35樓至43樓及45樓至49樓	3.035					3.035					
	29/F 29樓	3.035 3.135 3.335 3.385	3.035 3.135 3.235 3.435 3.485	3.035 3.135 3.235 3.385	3.035 3.135 3.135 3.360	3.035 3.135 3.135 3.285	3.035 3.135 3.335 3.385	3.035 3.135 3.285 3.360	3.035 3.135 3.335 3.360	3.035 3.135 3.285 3.385	3.035 3.135 3.335 3.385	3.035 3.135 3.285 3.360
	50/F 50樓	3.055 3.155 3.355 3.405 3.505 3.755	3.055 3.305 3.355 3.405 3.505 3.755	3.405		3.405	3.405 3.505 3.655 3.730	3.055 3.305 3.355 3.405 3.505 3.655 3.705 3.755	3.080 3.180 3.330 3.405 3.505 3.655 3.730	3.055 3.155 3.405 3.505 3.705 3.755	3.180 3.330 3.405 3.505 3.655 3.730	
Thickness of the floor slabs (excluding plaster) of each residential property (mm) 每個住宅物業的樓板 (不包括灰泥) 厚度 (毫米)	8/F-12/F, 15/F-23/F, 25/F-28/F, 31/F-33/F, 35/F-43/F & 45/F-49/F 8樓至12樓、15樓至23樓、25樓至28樓、31樓至33樓、35樓至43樓及45樓至49樓	150 300	150	150 300	150 175	150 300	150 175 300	150	150 175 300	150	150 175	
	29/F 29樓	150 300	150 250	150 250 300	150 175	150 300	150 175 300	150	150 175 300	150	150 175	
	50/F 50樓	150 300	150	150 300	150 175	150 300	150 175 300	150	150 175 300	150	150 175	

The internal areas of the residential properties on the upper floors will generally be slightly larger than those on the lower floors because of the reducing thickness of the structural walls on the upper floors (Note: This statement as required under section 10(2)(e) of Part 1 of Schedule 1 to the Residential Properties (First-hand Sales) Ordinance is not applicable to the Phase).

因住宅物業的較高樓層的結構牆的厚度遞減，較高樓層的內部面積，一般比較低樓層的內部面積稍大(備註：此《一手住宅物業銷售條例》附表1第1部第10(2)(e)條規定之陳述並不適用於期數)。

Remarks :

- The dimensions in the floor plans are all structural dimensions in millimetre and rounded off to the nearest integer.
- For details of the noise mitigation measures, please refer to the Relevant Information section in this sales brochure.
- Please refer to Page 21 of this sales brochure for legend of the terms and abbreviations shown in the floor plan.

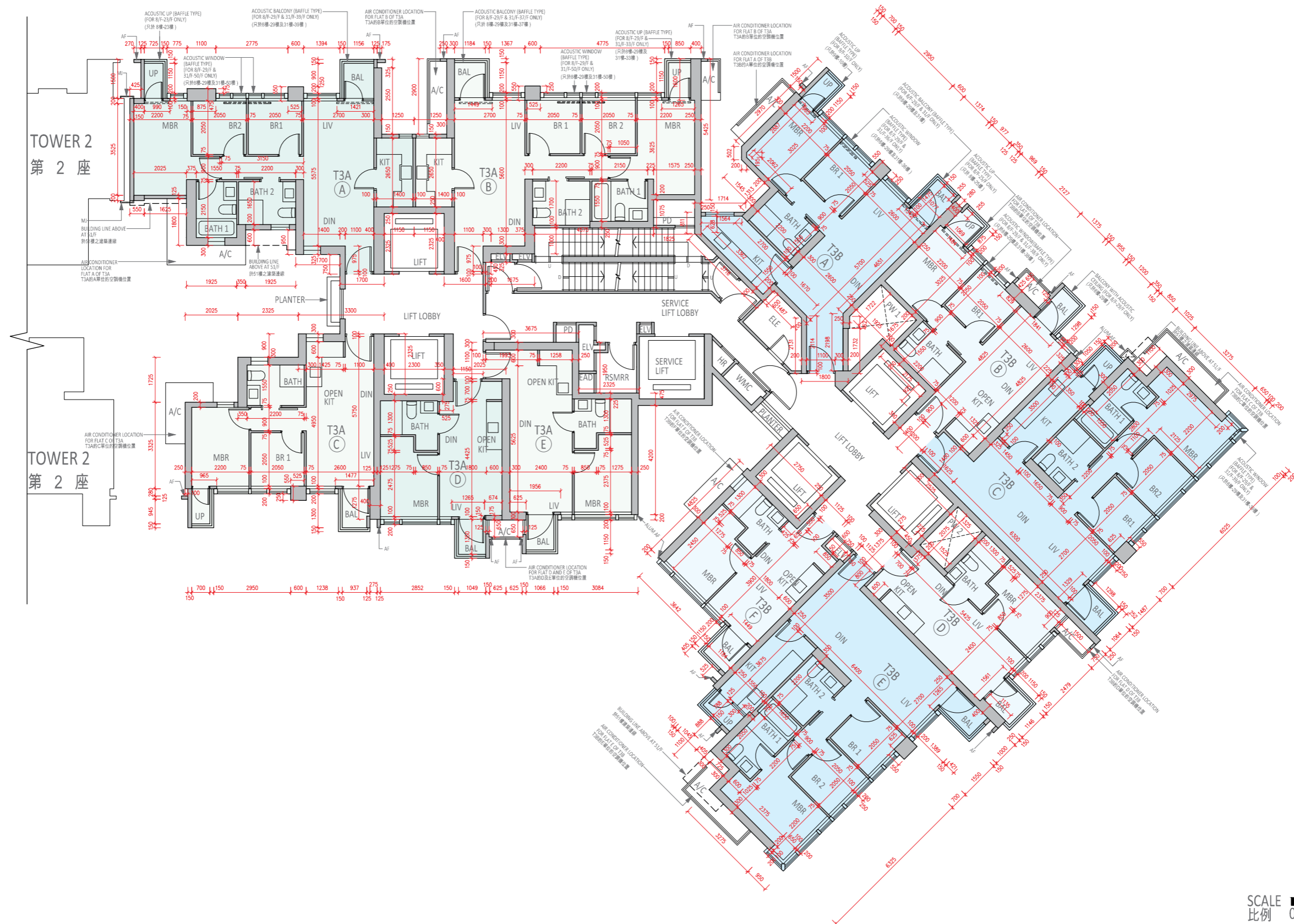
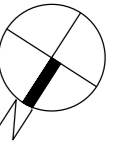
備註：

- 樓面平面圖之尺規所列數字為以毫米標示之建築結構尺寸，並以四捨五入至整數。
- 有關紓緩噪音措施之詳情，請參閱本售樓說明書的有關資料章節。
- 平面圖中顯示之名稱及簡稱之圖例請參閱本售樓說明書第21頁。

Floor plans of residential properties in the phase 期數的住宅物業的樓面平面圖

Tower 3 (3A & 3B)
第3座 (3A及3B)

8/F-12/F, 15/F-23/F, 25/F-29/F, 31/F-33/F, 35/F-43/F & 45/F-50/F (13/F, 14/F, 24/F, 34/F and 44/F are omitted)
8樓至12樓, 15樓至23樓, 25樓至29樓, 31樓至33樓, 35樓至43樓及45樓至50樓 (不設13樓、14樓、24樓、34樓及44樓)



SCALE
比例 0 1 2 3 4 5m(米)

Floor plans of residential properties in the phase 期數的住宅物業的樓面平面圖

Tower 3 (3A & 3B) 51/F
第3座 (3A及3B) 51樓

Description 描述	Tower 3 (3A) 第3座 (3A)				Tower 3 (3B) 第3座 (3B)		
	Flat 單位				Flat 單位		
	A	C	D	E	A	C	E
Floor-to-floor height (refers to the height between the top surface of the structural slab of a floor and the top surface of the structural slab of its immediate upper floor) of each residential property (m) 每個住宅物業的層與層之間的高度 (指該樓層之石屎地台面與上一層石屎地台面之高度距離) (米)	3.500 3.600 3.750 3.850	3.500 3.600 3.750	3.500 3.600 3.825	3.500 3.600 3.750	3.500 3.600 3.800 3.850	3.500 3.600 3.825 3.850	3.500 3.825 3.850
Thickness of the floor slabs (excluding plaster) of each residential property (mm) 每個住宅物業的樓板 (不包括灰泥) 厚度 (毫米)	150 175 200 300	200 300	250		200 300	175 200 300	

The internal areas of the residential properties on the upper floors will generally be slightly larger than those on the lower floors because of the reducing thickness of the structural walls on the upper floors (Note: This statement as required under section 10(2)(e) of Part 1 of Schedule 1 to the Residential Properties (First-hand Sales) Ordinance is not applicable to the Phase).

因住宅物業的較高樓層的結構牆的厚度遞減，較高樓層的內部面積，一般比較低樓層的內部面積稍大(備註：此《一手住宅物業銷售條例》附表1第1部第10(2)(e)條規定之陳述並不適用於期數)。

Remarks :

1. The dimensions in the floor plans are all structural dimensions in millimetre and rounded off to the nearest integer.
2. For details of the noise mitigation measures, please refer to the Relevant Information section in this sales brochure.
3. Please refer to Page 21 of this sales brochure for legend of the terms and abbreviations shown in the floor plan.

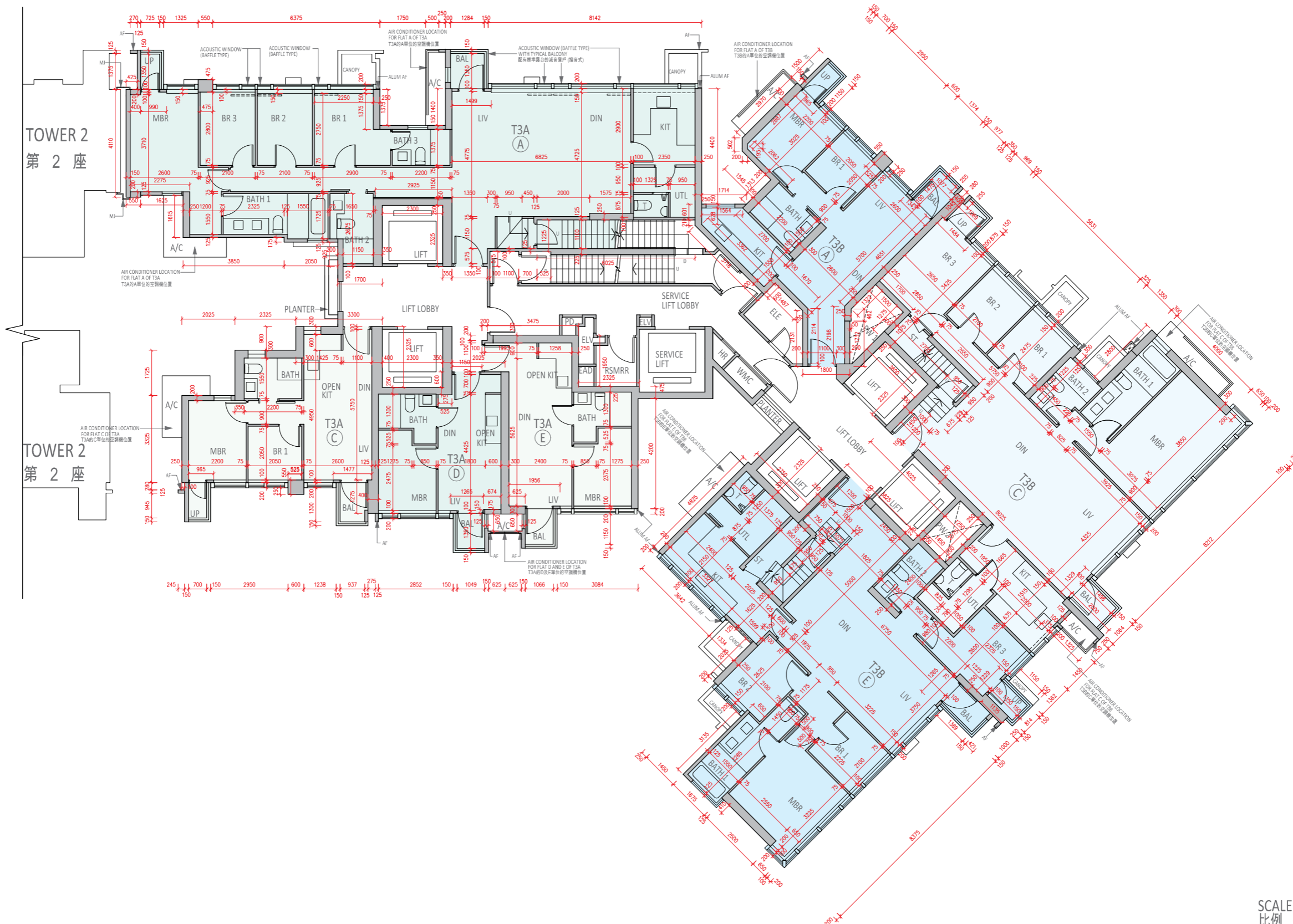
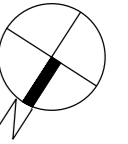
備註：

1. 樓面平面圖之尺規所列數字為以毫米標示之建築結構尺寸，並以四捨五入至整數。
2. 有關紓緩噪音措施之詳情，請參閱本售樓說明書的有關資料章節。
3. 平面圖中顯示之名詞及簡稱之圖例請參閱本售樓說明書第21頁。

Floor plans of residential properties in the phase 期數的住宅物業的樓面平面圖

Tower 3 (3A & 3B)
第3座 (3A及3B)

51/F
51樓



SCALE 比例 0 1 2 3 4 5m(米)

Floor plans of residential properties in the phase 期數的住宅物業的樓面平面圖

Tower 3 (3A & 3B)
第3座 (3A及3B)

ROOF
天台

Description 描述	Tower 3 (3A) 第3座 (3A)				Tower 3 (3B) 第3座 (3B)		
	Flat 單位				Flat 單位		
	A	C	D	E	A	C	E
Floor-to-floor height (refers to the height between the top surface of the structural slab of a floor and the top surface of the structural slab of its immediate upper floor) of each residential property (m) 每個住宅物業的層與層之間的高度 (指該樓層之石屎地台面與上一層石屎地台面之高度距離) (米)	Not Applicable 不適用				Not Applicable 不適用		
Thickness of the floor slabs (excluding plaster) of each residential property (mm) 每個住宅物業的樓板 (不包括灰泥) 厚度 (毫米)	Not Applicable 不適用				Not Applicable 不適用		

The internal areas of the residential properties on the upper floors will generally be slightly larger than those on the lower floors because of the reducing thickness of the structural walls on the upper floors (Note: This statement as required under section 10(2)(e) of Part 1 of Schedule 1 to the Residential Properties (First-hand Sales) Ordinance is not applicable to the Phase).

因住宅物業的較高樓層的結構牆的厚度遞減，較高樓層的內部面積，一般比較低樓層的內部面積稍大(備註：此《一手住宅物業銷售條例》附表1第1部第10(2)(e)條規定之陳述並不適用於期數)。

Remarks :

1. The dimensions in the floor plans are all structural dimensions in millimetre and rounded off to the nearest integer.
2. For details of the noise mitigation measures, please refer to the Relevant Information section in this sales brochure.
3. Please refer to Page 21 of this sales brochure for legend of the terms and abbreviations shown in the floor plan.

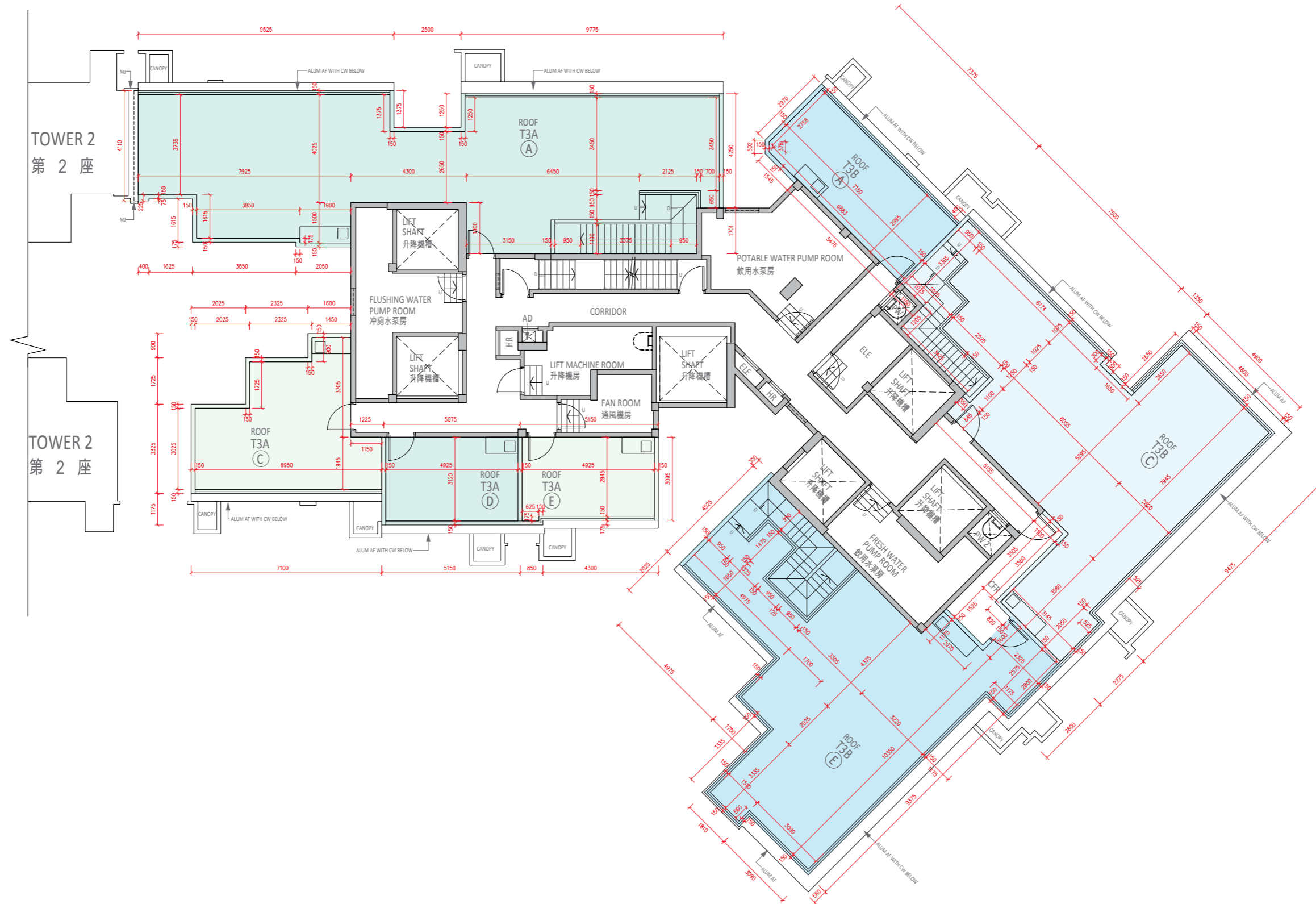
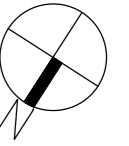
備註：

1. 樓面平面圖之尺規所列數字為以毫米標示之建築結構尺寸，並以四捨五入至整數。
2. 有關紓緩噪音措施之詳情，請參閱本售樓說明書的有關資料章節。
3. 平面圖中顯示之名詞及簡稱之圖例請參閱本售樓說明書第21頁。

Floor plans of residential properties in the phase 期數的住宅物業的樓面平面圖

Tower 3 (3A & 3B)
第3座 (3A及3B)

ROOF
天台



SCALE
比例 0 1 2 3 4 5m(米)