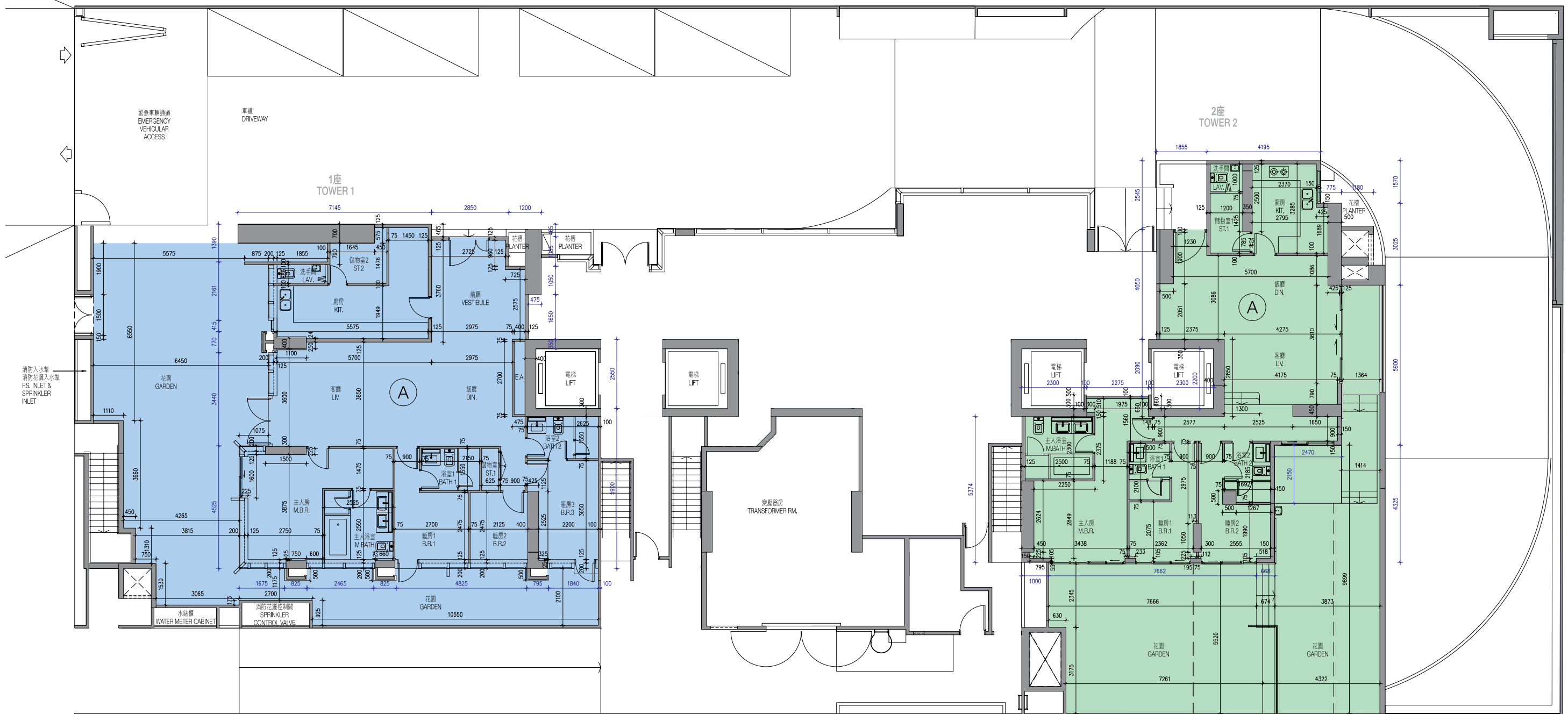


地下平面圖 Ground Floor Plan



每個住宅物業 Each Residential Property	樓層 Floor	單位 (1座) Unit (Tower 1)	單位 (2座) Unit (Tower 2)
		A	A
層與層之間的高度 (毫米) <sup>(1)(2)</sup> Floor-to-Floor Height (mm) <sup>(1)(2)</sup>	地下 G/F	4500, 4600, 4800	4400, 4500, 4700
樓板 (不包括灰泥) 的厚度 (毫米) Thickness of Floor Slab (excluding plaster) (mm)		1100, 1200, 1400	150, 1100, 1200, 1400

0M(米) Scale(比例) 10M(米)

(1) 指該樓層之石屎地台面與上一層石屎地台面之高度距離 i.e. the height between the top surface of the structural slab of the floor and the top surface of the structural slab of its immediate upper floor  
 (2) 層與層之間高度包括介乎於發展項目地下與一樓之間的1400毫米/1200毫米/1100毫米結構轉換層 Floor-to-Floor Height (mm) has included Structural Transfer Plate with 1400mm/1200mm/1100mm between G/F and 1/F of the Development

因住宅物業的較高樓層的結構牆的厚度遞減，較高樓層的內部面積，一般比較低樓層的內部面積稍大。The internal areas of the residential properties on the upper floors will generally be slightly larger than those on the lower floors because of the reducing thickness of the structural walls on the upper floors. 請參閱本售樓說明書第26頁為住宅物業樓面平面圖而設之備註及圖例。Please refer to page 26 of this sales brochure for the notes and legends of the terms and abbreviations for the floor plans of residential properties.  
 備註：平面圖所列之數字為以毫米標示之建築結構尺寸。  
 Notes: The dimensions of the floor plans are all structural dimensions in millimeter.