

10 發展項目的住宅物業的樓面平面圖

FLOOR PLANS OF RESIDENTIAL PROPERTIES IN THE DEVELOPMENT

在本頁上之備註和圖例適用於全部的「發展項目的住宅物業的樓面平面圖」頁數。

The notes and legends on this page apply to all pages of “Floor plans of residential properties in the development”.

樓面平面圖圖例

Legends of the Floor Plans

A/C PLATFORM	=	Air-conditioning Platform 冷氣機平台
A/C UNIT	=	Air-conditioning Unit 冷氣機
BAL.	=	Balcony 露台
BATH	=	Bathroom 浴室
BED RM.	=	Bedroom 睡房
DN.	=	Down 落
ELEC. ROOM	=	Electricity Room 電房
ELV DUCT	=	Extra Low Voltage Duct 弱電電線管道
EMERGENCY GENERATOR RM.	=	Emergency Generator Room 緊急發電機房
E.M.R.	=	Electric Meter Room 電錶房
F.H.	=	Fire Hydrant 消防栓
F.S.PD	=	Fire Services Pipe Duct 消防管道
H.R.	=	Hose Reel 消防喉轆
H/L	=	High Level 高位
LIV./DIN.	=	Living Room and Dining Room 客廳及飯廳
M. BATH	=	Master Bathroom 主人浴室
M. BED RM.	=	Master Bedroom 主人睡房
OPEN KIT.	=	Open Kitchen 開放式廚房
PD	=	Pipe Duct 管道
REFUSE RM.	=	Refuse Storage and Material Recovery Room 垃圾及物料回收室
STORE	=	Store Room 儲物室
U.P.	=	Utility Platform 工作平台
WMC	=	Water Meter Cabinet 水錶櫃
WMR	=	Water Meter Room 水錶房

備註：

1. 部分住宅物業的露台、平台、天台或外牆或設有外露之公用喉管，或外牆裝飾板內藏之公用喉管。
2. 部分住宅物業內之部分天花或有跌級樓板，用以安裝上層之機電設備或配合上層之結構、建築設計及/或裝修設計上的需要。
3. 部分住宅物業內或設有假陣或假天花用以安裝冷氣喉管及/或其他機電設備。
4. 樓面平面圖所列之數字為以毫米標示之建築結構尺寸。
5. 各住宅物業的樓面平面圖內所展示之裝置及設備的圖標如浴缸、洗面盆、座廁、淋浴間、洗滌盆、櫃(如有)等乃根據最新經批准的建築圖則擬備，其形狀、尺寸、比例或與實際提供的裝置及設備存在差異，僅供示意及參考之用。

Notes:

1. Common pipes exposed or enclosed in cladding may be located at the balcony, flat roof, roof or external wall of some residential properties.
2. There may be sunken slabs at some parts of the ceiling inside some residential properties for the installation of mechanical and electrical services of the floor above or due to the structural, architectural and/or decoration design requirements of the floor above.
3. There may be ceiling bulkheads or false ceiling inside some residential properties for the installation of air-conditioning conduits and/or other mechanical and electrical services.
4. The dimensions of the floor plans are all structural dimensions in millimeter.
5. Those icons of fittings and appliances shown on the floor plans of residential properties like bathtubs, wash basins, water closets, shower cubicles, sink units, cabinets (if any) etc. are prepared in accordance with the latest approved building plans. Their shapes, dimensions, scales may be different from the fittings and appliances actually provided and they are for indication and reference only.

10 發展項目的住宅物業的樓面平面圖 FLOOR PLANS OF RESIDENTIAL PROPERTIES IN THE DEVELOPMENT

5樓平面圖 5/F FLOOR PLAN

備註：1. 平面圖所列之數字為以毫米標示之建築結構尺寸。
2. 平台空白位置為供維修大廈設備使用的公用地方。

Notes: 1. The dimensions of floor plans are all structural dimensions in millimeter.
2. Blank areas on the flat roof are common areas for building facility maintenance.

比例：0米/M 5米/M
Scale: 0米/M 5米/M



10 發展項目的住宅物業的樓面平面圖

FLOOR PLANS OF RESIDENTIAL PROPERTIES IN THE DEVELOPMENT

每個住宅物業 Each Residential Property	樓層 Floor	第1座 Tower 1													
		單位 Flat													
		A	B	C	D	E	F	G	H	J	K	L	M	N	P
樓板 (不包括灰泥) 的厚度 (毫米) Thickness of Floor Slab (excluding plaster) (mm)	5樓 5/F	160	160	160	160	160	160	160	160	160	160	160	160	160	160
層與層之間的高度 (毫米) Floor-to-Floor Height (mm)		3400, 3500	3400, 3500	3400, 3500	3400, 3500	3400, 3500	3400, 3500	3500	3150, 3400, 3500	3400, 3500	3400, 3500	3400, 3500	3500	3500	3500

每個住宅物業 Each Residential Property	樓層 Floor	第2座 Tower 2										
		單位 Flat										
		A	B	C	D	E	F	G	H	J	K	L
樓板 (不包括灰泥) 的厚度 (毫米) Thickness of Floor Slab (excluding plaster) (mm)	5樓 5/F	160	200	160	160	160	160	160	160	160	160	160
層與層之間的高度 (毫米) Floor-to-Floor Height (mm)		3400, 3500	3500	3250, 3400, 3500	3400, 3500	3400, 3500	3150, 3400, 3500	3250, 3500	3500	3500	3500	3500

因住宅物業的較高樓層的結構牆的厚度遞減，較高樓層的內部面積，一般比較低樓層的內部面積稍大。

The internal areas of the residential properties on the upper floors will generally be slightly larger than those on the lower floors because of the reducing thickness of the structural walls on the upper floors.

請參閱本售樓說明書第21頁為住宅物業樓面平面圖而設之備註和圖例。

Please refer to page 21 of this sales brochure for the notes and legends of the terms and abbreviations for the floor plans of residential properties.

10 發展項目的住宅物業的樓面平面圖 FLOOR PLANS OF RESIDENTIAL PROPERTIES IN THE DEVELOPMENT

6樓至12樓及15樓至19樓平面圖 6/F-12/F & 15/F-19/F FLOOR PLAN

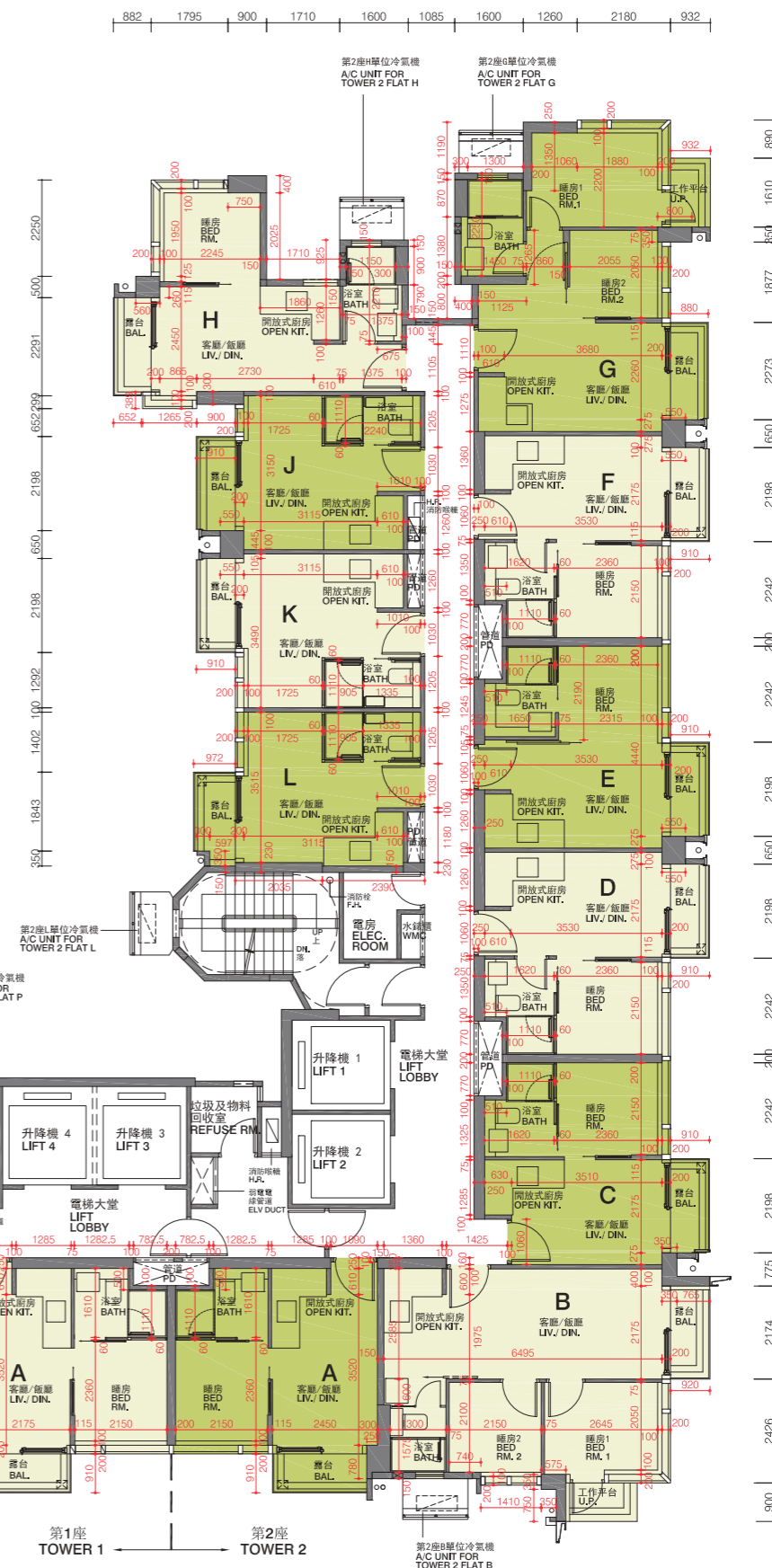
備註：平面圖所列之數字為以毫米標示之建築結構尺寸。
Notes: The dimensions of floor plans are all structural dimensions in millimeter.

比例：0米/M 5米/M
Scale: 0米/M 5米/M

第1座 TOWER 1



第2座 TOWER 2



10 發展項目的住宅物業的樓面平面圖

FLOOR PLANS OF RESIDENTIAL PROPERTIES IN THE DEVELOPMENT

每個住宅物業 Each Residential Property	樓層 Floor	第1座 Tower 1													
		單位 Flat													
		A	B	C	D	E	F	G	H	J	K	L	M	N	P
樓板 (不包括灰泥) 的厚度 (毫米) Thickness of Floor Slab (excluding plaster) (mm)	6樓至12樓及 15樓至18樓 6/F-12/F and 15/F-18/F	160	160	160	160	160	160	160	160	160	160	160	160	160	160
層與層之間的高度 (毫米) Floor-to-Floor Height (mm)		3500	3500	3500	3500	3500	3500	3500	3500	3500	3500	3500	3500	3500	3500
樓板 (不包括灰泥) 的厚度 (毫米) Thickness of Floor Slab (excluding plaster) (mm)	19樓 19/F	160	160	160	160	160	160	160	160	160	160	160	160	160	160
層與層之間的高度 (毫米) Floor-to-Floor Height (mm)		3500	3500	3500	3500	3500	3150, 3400, 3500	3500	3500	3500	3500	3500	3500	3500	3500

每個住宅物業 Each Residential Property	樓層 Floor	第2座 Tower 2										
		單位 Flat										
		A	B	C	D	E	F	G	H	J	K	L
樓板 (不包括灰泥) 的厚度 (毫米) Thickness of Floor Slab (excluding plaster) (mm)	6樓至12樓及 15樓至18樓 6/F-12/F and 15/F-18/F	160	200	160	160	160	160	160	160	160	160	160
層與層之間的高度 (毫米) Floor-to-Floor Height (mm)		3500	3500	3500	3500	3500	3500	3500	3500	3500	3500	3500
樓板 (不包括灰泥) 的厚度 (毫米) Thickness of Floor Slab (excluding plaster) (mm)	19樓 19/F	160	200	160	160	160	160	160	160	160	160	160
層與層之間的高度 (毫米) Floor-to-Floor Height (mm)		3500	3500	3500	3500	3500	3500	3500	3500	3500	3500	3500

因住宅物業的較高樓層的結構牆的厚度遞減，較高樓層的內部面積，一般比較低樓層的內部面積稍大。

The internal areas of the residential properties on the upper floors will generally be slightly larger than those on the lower floors because of the reducing thickness of the structural walls on the upper floors.

請參閱本售樓說明書第21頁為住宅物業樓面平面圖而設之備註和圖例。

Please refer to page 21 of this sales brochure for the notes and legends of the terms and abbreviations for the floor plans of residential properties.

10 發展項目的住宅物業的樓面平面圖 FLOOR PLANS OF RESIDENTIAL PROPERTIES IN THE DEVELOPMENT

20樓至23樓及25樓至26樓平面圖 20/F-23/F & 25/F-26/F FLOOR PLAN

備註：平面圖所列之數字為以毫米標示之建築結構尺寸。
Notes: The dimensions of floor plans are all structural dimensions in millimeter.

比例：0米/M 5米/M
Scale: 0米/M 5米/M



第1座 TOWER 1

第2座 TOWER 2



10 發展項目的住宅物業的樓面平面圖

FLOOR PLANS OF RESIDENTIAL PROPERTIES IN THE DEVELOPMENT

每個住宅物業 Each Residential Property	樓層 Floor	第1座 Tower 1													
		單位 Flat													
		A	B	C	D	E	F	G	H	J	K	L	M	N	P
樓板 (不包括灰泥) 的厚度 (毫米) Thickness of Floor Slab (excluding plaster) (mm)	20樓至23樓 及25樓 20/F-23/F and 25/F	160	160	160	160	160	160	160	160	160	160	160	160	160	160
層與層之間的高度 (毫米) Floor-to-Floor Height (mm)		3500	3500	3500	3500	3500	3500	3500	3500	3500	3500	3500	3500	3500	3500
樓板 (不包括灰泥) 的厚度 (毫米) Thickness of Floor Slab (excluding plaster) (mm)	26樓 26/F	160	160	160	160	160	160	160, 200	160, 175	160	160	160	160	160	160
層與層之間的高度 (毫米) Floor-to-Floor Height (mm)		3150, 3250, 3400, 3500	3150, 3400, 3500	3150, 3250, 3400, 3500	3150, 3400, 3500	3150, 3250, 3400, 3500	3250, 3500	3200, 3400, 3500	3200, 3500	3150, 3200, 3250, 3400, 3500	3250, 3350, 3500	3150, 3400, 3500	3150, 3250, 3400, 3500	3400, 3500	3150, 3200, 3400, 3500

每個住宅物業 Each Residential Property	樓層 Floor	第2座 Tower 2										
		單位 Flat										
		A	B	C	D	E	F	G	H	J	K	L
樓板 (不包括灰泥) 的厚度 (毫米) Thickness of Floor Slab (excluding plaster) (mm)	20樓至23樓 及25樓 20/F-23/F and 25/F	160	200	160	160	160	160	160	160	160	160	160
層與層之間的高度 (毫米) Floor-to-Floor Height (mm)		3500	3500	3500	3500	3500	3500	3500	3500	3500	3500	3500
樓板 (不包括灰泥) 的厚度 (毫米) Thickness of Floor Slab (excluding plaster) (mm)	26樓 26/F	160	200	160	160	160	160	150, 160	150, 160	160	160	160
層與層之間的高度 (毫米) Floor-to-Floor Height (mm)		3150, 3250, 3400, 3500	3200, 3250, 3300, 3500	3250, 3500	3150, 3250, 3500	3150, 3400, 3500	3150, 3500	3150, 3200, 3250, 3400, 3500	3200, 3300, 3450, 3500	3250, 3500	3150, 3400, 3500	3150, 3250, 3500

因住宅物業的較高樓層的結構牆的厚度遞減，較高樓層的內部面積，一般比較低樓層的內部面積稍大。

The internal areas of the residential properties on the upper floors will generally be slightly larger than those on the lower floors because of the reducing thickness of the structural walls on the upper floors.

請參閱本售樓說明書第21頁為住宅物業樓面平面圖而設之備註和圖例。

Please refer to page 21 of this sales brochure for the notes and legends of the terms and abbreviations for the floor plans of residential properties.

10 發展項目的住宅物業的樓面平面圖 FLOOR PLANS OF RESIDENTIAL PROPERTIES IN THE DEVELOPMENT

28樓平面圖 28/F FLOOR PLAN

備註：平面圖所列之數字為以毫米標示之建築結構尺寸。
Notes: The dimensions of floor plans are all structural dimensions in millimeter.

比例：0米/M 5米/M
Scale: 0米/M 5米/M



第1座
TOWER 1

第2座
TOWER 2

10 發展項目的住宅物業的樓面平面圖

FLOOR PLANS OF RESIDENTIAL PROPERTIES IN THE DEVELOPMENT

每個住宅物業 Each Residential Property	樓層 Floor	第1座 Tower 1						
		單位 Flat						
		A	B	C	D	E	F	G
樓板 (不包括灰泥) 的厚度 (毫米) Thickness of Floor Slab (excluding plaster) (mm)	28樓 28/F	200	175, 200	175	170, 175, 200	150, 175	150, 175	150, 175
層與層之間的高度 (毫米) Floor-to-Floor Height (mm)		4000	4000	4000	4000	4000	4000	4000

每個住宅物業 Each Residential Property	樓層 Floor	第2座 Tower 2					
		單位 Flat					
		A	B	C	D	E	F
樓板 (不包括灰泥) 的厚度 (毫米) Thickness of Floor Slab (excluding plaster) (mm)	28樓 28/F	150, 200	150, 175	175	150, 175, 200	175, 200	175, 200
層與層之間的高度 (毫米) Floor-to-Floor Height (mm)		4000	4000	4000	4000	4000	4000

因住宅物業的較高樓層的結構牆的厚度遞減，較高樓層的內部面積，一般比較低樓層的內部面積稍大。

The internal areas of the residential properties on the upper floors will generally be slightly larger than those on the lower floors because of the reducing thickness of the structural walls on the upper floors.

請參閱本售樓說明書第21頁為住宅物業樓面平面圖而設之備註和圖例。

Please refer to page 21 of this sales brochure for the notes and legends of the terms and abbreviations for the floor plans of residential properties.

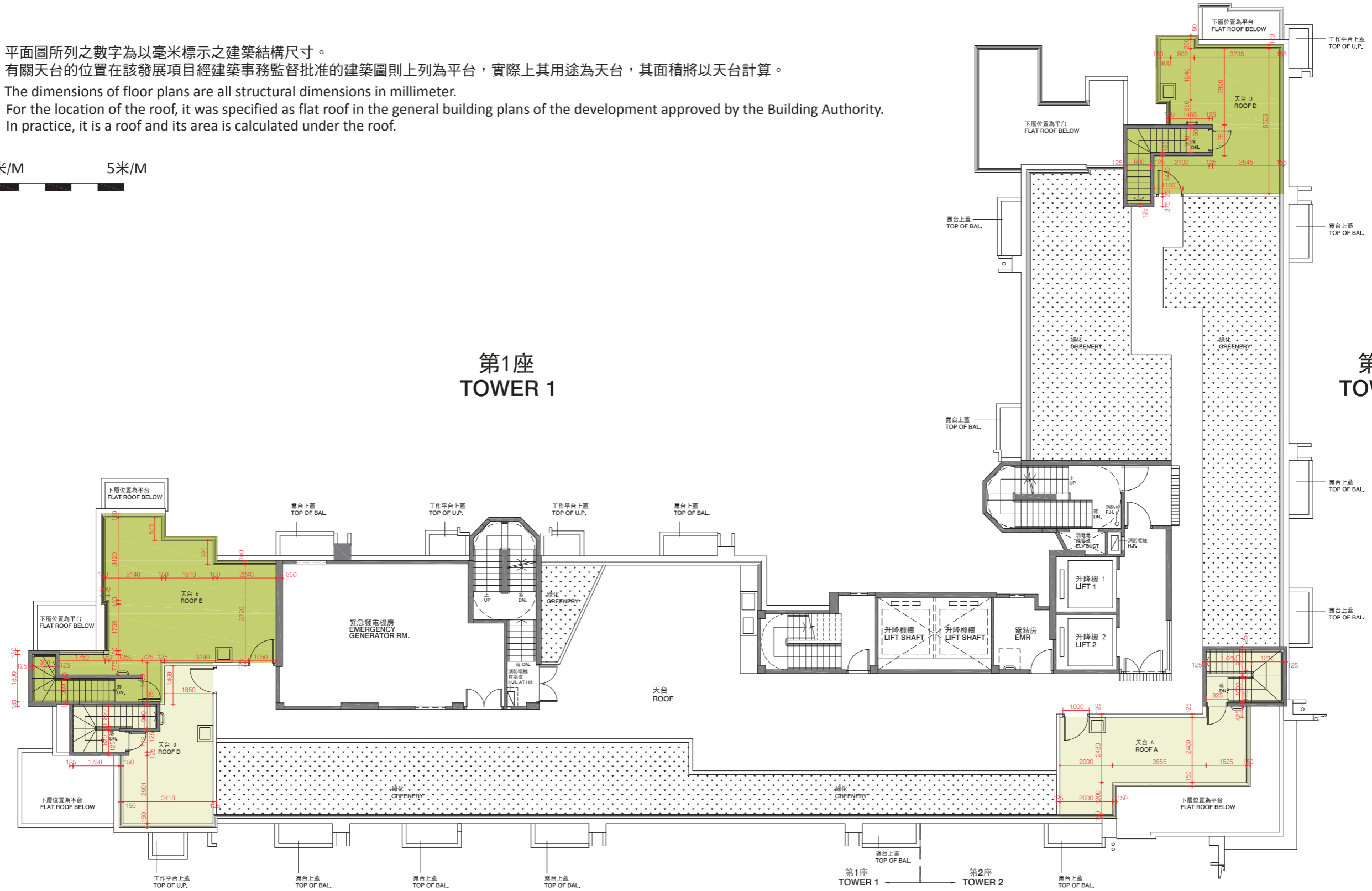
10 發展項目的住宅物業的樓面平面圖 FLOOR PLANS OF RESIDENTIAL PROPERTIES IN THE DEVELOPMENT

天台平面圖 ROOF PLAN



- 備註：1. 平面圖所列之數字為以毫米標示之建築結構尺寸。
2. 有關天台的位置在該發展項目經建築事務監督批准的建築圖則上列為平台，實際上其用途為天台，其面積將以天台計算。
- Notes: 1. The dimensions of floor plans are all structural dimensions in millimeter.
2. For the location of the roof, it was specified as flat roof in the general building plans of the development approved by the Building Authority. In practice, it is a roof and its area is calculated under the roof.

比例：0米/M 5米/M
Scale:



10 發展項目的住宅物業的樓面平面圖

FLOOR PLANS OF RESIDENTIAL PROPERTIES IN THE DEVELOPMENT

每個住宅物業 Each Residential Property	樓層 Floor	第1座 Tower 1		第2座 Tower 2	
		單位 Flat		單位 Flat	
		D	E	A	D
樓板 (不包括灰泥) 的厚度 (毫米) Thickness of Floor Slab (excluding plaster) (mm)	天台 Roof	不適用 Not Applicable	不適用 Not Applicable	不適用 Not Applicable	不適用 Not Applicable
層與層之間的高度 (毫米) Floor-to-Floor Height (mm)		不適用 Not Applicable	不適用 Not Applicable	不適用 Not Applicable	不適用 Not Applicable

因住宅物業的較高樓層的結構牆的厚度遞減，較高樓層的內部面積，一般比較低樓層的內部面積稍大。

The internal areas of the residential properties on the upper floors will generally be slightly larger than those on the lower floors because of the reducing thickness of the structural walls on the upper floors.

請參閱本售樓說明書第21頁為住宅物業樓面平面圖而設之備註和圖例。

Please refer to page 21 of this sales brochure for the notes and legends of the terms and abbreviations for the floor plans of residential properties.