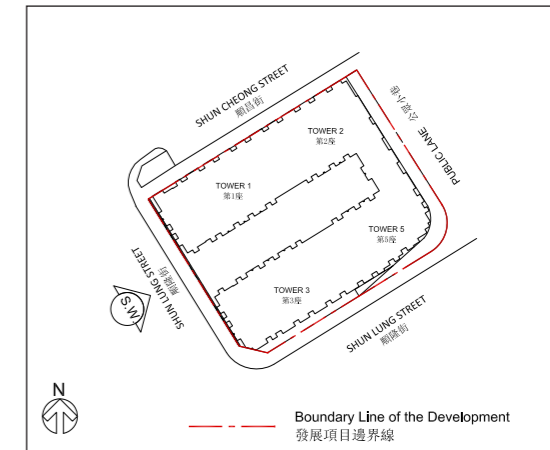


ELEVATION PLAN

立面圖

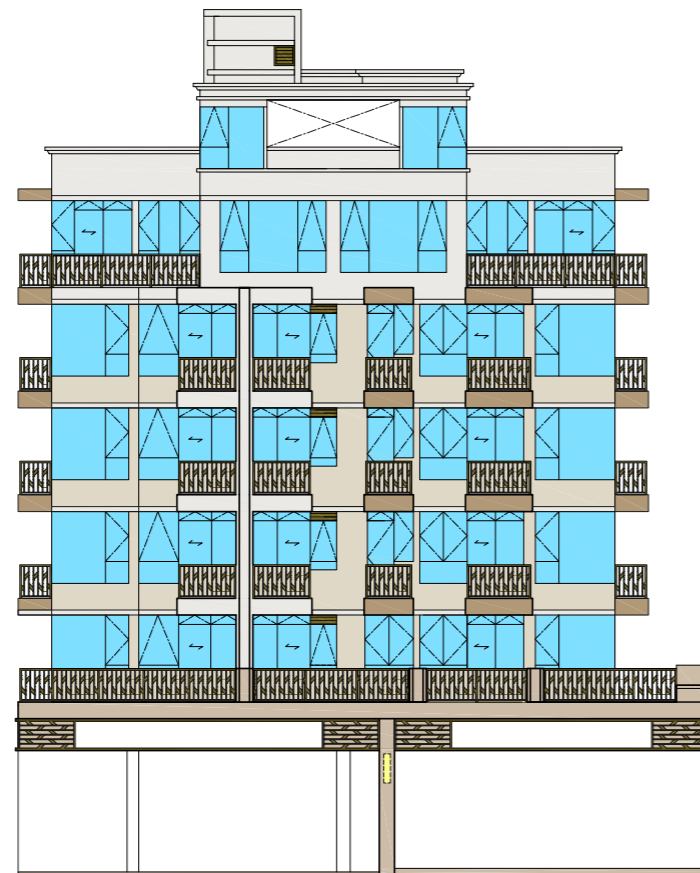
SOUTH WEST ELEVATION PLAN

西南立面圖

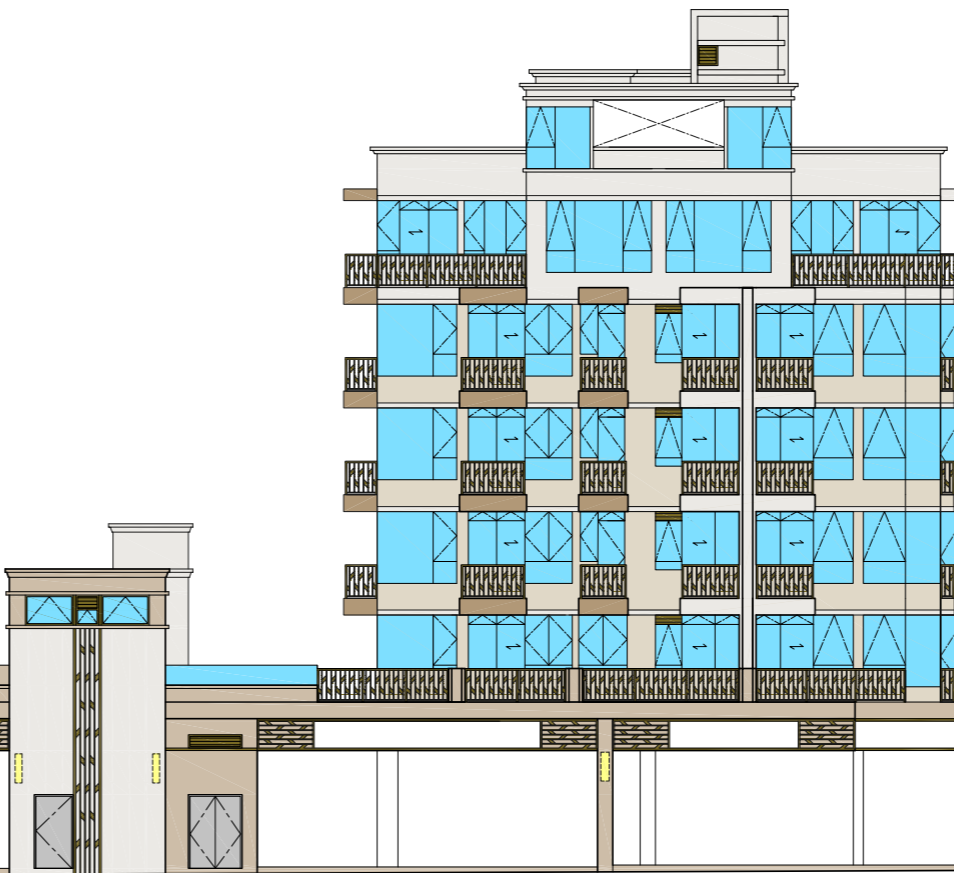


KEY PLAN
指示圖

TOWER 1
第1座



TOWER 3
第3座



It has been certified by the Authorized Person for the Development that the elevations:
a) are prepared on the basis of the approved building plans for the Development as of 30 Dec 2016 ; and
b) are in general accordance with the outward appearance of the Development.

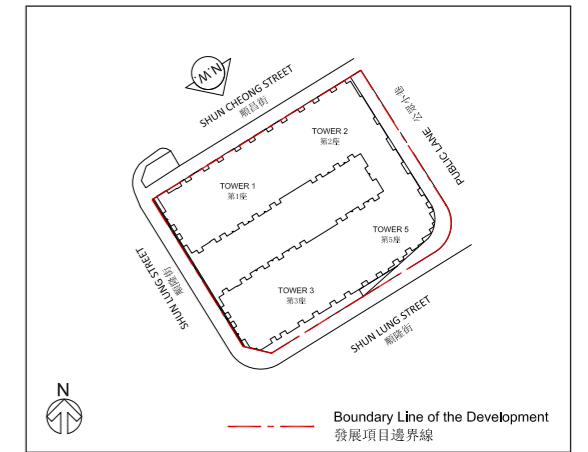
發展項目的認可人士已經證明該等立面：
a) 以2016年12月30日的情況為準的發展項目的經批准的建築圖則為基礎擬備；及
b) 大致上與發展項目的外觀一致。

ELEVATION PLAN

立面圖

NORTH WEST ELEVATION PLAN

西北立面圖



KEY PLAN
指示圖



It has been certified by the Authorized Person for the Development that the elevations:
a) are prepared on the basis of the approved building plans for the Development as of 30 Dec 2016 ; and
b) are in general accordance with the outward appearance of the Development.

發展項目的認可人士已經證明該等立面：
a) 以2016年12月30日的情況為準的發展項目的經批准的建築圖則為基礎擬備；及
b) 大致上與發展項目的外觀一致。

ELEVATION PLAN

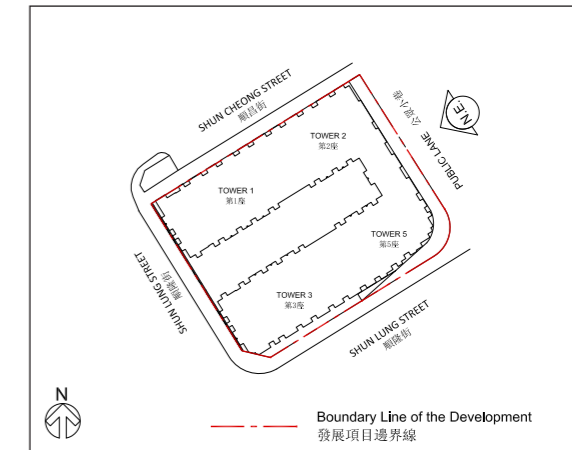
立面圖

NORTH EAST ELEVATION PLAN

東北立面圖

TOWER 5
第5座

TOWER 2
第2座



KEY PLAN
指示圖



It has been certified by the Authorized Person for the Development that the elevations:

- a) are prepared on the basis of the approved building plans for the Development as of 30 Dec 2016 ; and
- b) are in general accordance with the outward appearance of the Development.

發展項目的認可人士已經證明該等立面：

- a) 以2016年12月30日的情況為準的發展項目的經批准的建築圖則為基礎擬備；及
- b) 大致上與發展項目的外觀一致。

INFORMATION ON COMMON FACILITIES IN THE DEVELOPMENT

發展項目中的公用設施的資料

		Covered 有蓋	Uncovered 露天
Residents' clubhouse (including any recreational facilities for residents' use) 住客會所(包括供住客使用的任何康樂設施)	Sq. m. 平方米	436.914m ²	238.448m ²
	Sq. ft. 平方呎	4,703ft ²	2,567ft ²
Communal garden or play area for residents' use on the roof, or on any floor between the roof and the lowest residential floor, of a building in the development (whether known as a communal sky garden or otherwise) 位於發展項目中的建築物的天台或在天台和最低一層住宅樓層之間的任何一層的、供住客使用的公用花園或遊樂地方(不論是稱為公用空中花園或有其他名稱)	Sq. m. 平方米	-	-
	Sq. ft. 平方呎	-	-
Communal garden or play area for residents' use below the lowest residential floor of a building in the development (whether known as a covered and landscaped play area or otherwise) 位於發展項目中的建築物的最低一層住宅樓層以下的、供住客使用的公用花園或遊樂地方(不論是稱為有蓋及園景的遊樂場或有其他名稱)	Sq. m. 平方米	399.192m ²	-
	Sq. ft. 平方呎	4,297ft ²	-

Note:

The above areas have been converted to square feet based on a conversion rate of 1 square metre = 10.7639 square feet and rounded in square feet; the area shown in sq.ft. is rounded down or rounded up to the nearest integer and may be slightly different from that shown in sq.m.

備註：

上述所列之面積均以1平方米=10.7639平方呎換算並四捨五入至整數平方呎；因四捨五入的關係，以平方呎表述之面積與以平方米表述之面積可能有些微差異。

INSPECTION OF PLANS AND DEED OF MUTUAL COVENANT

閱覽圖則及公契

1. A copy of the Outline Zoning Plan or the draft Outline Zoning Plan relating to the Development is available at www.ozp.tpb.gov.hk
1. 有關發展項目的分區計劃大綱圖或草圖的文本供閱覽的互聯網網站的網址為www.ozp.tpb.gov.hk
2. A copy of the deed of mutual covenant in respect of the Development that has been executed is available for inspection free of charge at the sales office.
2. 發展項目的已簽立的公契的文本存於售樓處以供免費閱覽。

FITTINGS, FINISHES AND APPLIANCES

裝置、裝修物料及設備

1. Exterior Finishes

Item	Description
a) External Wall	Type of Finishes: Residential towers' external walls are finished with ceramic wall tiles, partly external paint and partly aluminum louvers. Podium external wall are finished with ceramic wall tiles, partly external paint and partly aluminum louvers.
b) Window	Material of frame: Aluminum frame with fluorocarbon coating. Material of Glass (except Shower Rooms and Bathroom Glass of the units specified below) : Clear glazing glass. Material of Shower Room and Bathroom Glass: Obscured glass are provided to the Shower Room and Bathroom Glass of the following residential units: <u>Shower Room</u> Tower 1 : Unit C & E on 1/F to 3/F and 5/F Tower 2 : Unit M on 1/F to 3/F and 5/F to 6/F Tower 3 : Unit C & E on 1/F to 3/F and 5/F <u>Bathroom</u> Tower 1 : Unit C & D on 6/F Tower 3 : Unit C & D on 6/F
c) Bay Window	Not Applicable.
d) Planter	Finished with ceramic tiles.
e) Verandah or Balcony	All balconies are covered and fitted with metal balustrade. Floor finished with homogeneous tiles. Wall finished with ceramic wall tiles. Ceiling is finished with painting. There is no Verandah.
f) Drying Facilities for Clothing	Not Applicable

2. Interior Finishes

Item	Description
a) Lobby	Type of wall finishes: 1. Entrance hall on G/F : natural stone, partly stainless steel, mirror and glass. 2. Lift lobby on residential floor : ceramic tiles, partly stainless steel, mirror, natural stone and glass. Type of floor finishes: 1. Entrance hall on G/F : natural stone. 2. Lift lobby on residential floor : ceramic tiles. Type of ceiling finishes: 1. Entrance hall on G/F : gypsum board false ceiling with emulsion paint. 2. Lift lobby on residential floor : gypsum board false ceiling with emulsion paint.
b) Internal Wall and Ceiling	Type of wall finishes for Living Room, Dining Room and Bedroom: Plaster finished with emulsion paint. Type of ceiling finishes for Living Room, Dining Room and Bedroom: Plaster finished with emulsion paint where exposed; other parts provided with gypsum board false ceiling and bulkhead, finished with emulsion paint.
c) Internal Floor	Material of floor and skirting for Living Room, Dining Room and Bedroom: Ceramic floor tiles and wooden skirting.
d) Bathroom	Type of wall, floor and ceiling finishes: 1. Floor finished with ceramic floor tiles. 2. Wall (except area covered by the wooden cabinet) finished with ceramic wall tiles to false ceiling level. 3. Aluminum false ceiling.
e) Kitchen	Type of wall, floor, ceiling and cooking bench finishes: 1. Wall finished with ceramic wall tiles and painted with emulsion paint where exposed and up to false ceiling level. 2. Floor finished with ceramic floor tiles. 3. Gypsum board false ceiling finished with emulsion paint. 4. Cooking bench finished with solid artificial surfacing material.

FITTINGS, FINISHES AND APPLIANCES

裝置、裝修物料及設備

3. Interior Fittings

Item	Description
a) Doors	<p>Material:</p> <ol style="list-style-type: none"> Door of Unit Main Entrance: fire rated solid core timber door. Door of Bedroom and Bathroom: solid core timber door. Door of Shower Room: solid core timber door with timber louver. Door of Balcony: aluminum frame door with clear tempered glass. Door of Utility Platform: aluminum frame door with clear tempered glass. Door of Flat Roof: aluminum frame door with clear tempered glass. <p>Finishes:</p> <ol style="list-style-type: none"> Door of Unit Main Entrance: timber veneer. Door of Bedroom and Bathroom: timber veneer. Door of Shower Room: timber veneer. Door of Balcony: <ol style="list-style-type: none"> Aluminum frame swing door with fluorocarbon coating and clear tempered glass for the following residential units. Tower 1: Unit M on 1/F to 3/F, 5/F and 6/F Tower 2: Unit B on 1/F to 3/F, 5/F and 6/F Tower 5: Unit B & K on 1/F to 3/F, 5/F and 6/F Aluminum frame sliding door with fluorocarbon coating and clear tempered glass for other residential units. Door of Utility Platform: aluminum frame swing door with fluorocarbon coating and clear tempered glass. Door of Flat Roof: <ol style="list-style-type: none"> Aluminum frame swing door with fluorocarbon coating and clear tempered glass for the following residential units. Tower 1: Unit B, C, L & M on 1/F ; Unit C & D on 6/F Tower 3: Unit B & C on 1/F ; Unit C & D on 6/F Aluminum frame sliding door with fluorocarbon coating and clear tempered glass for other residential units. <p>Accessories:</p> <ol style="list-style-type: none"> Door of Unit Main Entrance: lockset, door closer, eye viewer and door stopper. Door of Bedroom and Bathroom: lockset and handle. Door of Shower Room: lockset and handle. Door of Balcony: lockset and handle. Door of Utility Platform: lockset and handle. Door of Flat Roof: lockset and handle.

Item	Description
b) Bathroom	<p>Type and material of fittings and equipment:</p> <p>Bathroom:</p> <p>Fitted with wooden hanging cabinet with mirror, wooden low cabinet with natural stone countertop, vitreous china water closet, vitreous china wash basin, chrome plated shower mixer, chrome plated basin mixer and chrome plated toilet paper holder.</p> <p>Shower Room:</p> <p>Fitted with wooden hanging cabinet with mirror, wooden low cabinet with natural stone countertop, chrome plated basin mixer, vitreous china water closet, vitreous china wash basin, chrome plated paper holder, chrome plated towel bar and chrome plated shower set.</p> <p>Type and material of water supply system:</p> <p>Indirect feed water supply system is provided and copper pipes for both hot and cold water supply.</p> <p>Type and material of bathing facilities:</p> <p>Bathroom: enamel cast iron bath tub. Shower Room: tempered glass shower cubicle.</p> <p>Size of bath tub: 1500 mm (L) x 700 mm (W) x 418 mm (D)</p>
c) Kitchen	<p>Material of sink unit: Stainless steel.</p> <p>Material of water supply system: Copper pipes for both hot and cold water supply.</p> <p>Material and finishes of kitchen cabinet: Open Kitchen: fitted with wooden kitchen cabinet with solid artificial surfacing material countertop.</p> <p>Fire service installations and equipment: Ceiling-mounted smoke detector and sprinkler head are fitted in or near open kitchen.</p> <p>Type of all other fittings and equipment: Chrome plated hot and cold water faucet.</p>
d) Bedroom	No fittings.

FITTINGS, FINISHES AND APPLIANCES

裝置、裝修物料及設備

3. Interior Fittings

Item	Description
e) Telephone	Location and number of connection points: Telephone points are provided at living room. For the number and location of the connection point, please refer to the "Schedule of Mechanical & Electrical Provisions of Residential Properties".
f) Aerials	Location and number of connection points: TV / FM outlets are provided at living room and bedroom(s). For the number and location of the TV/FM outlets point, please refer to the "Schedule of Mechanical & Electrical Provisions of Residential Properties".
g) Electrical Installations	Electrical fittings: Concealed conduit wiring for lighting and power points are provided in living room, dining room, bedrooms, kitchen and bathroom. Three-phase electricity supply with miniature circuit breakers distribution board and Residual Current Device is provided. Location and number of power points and air-conditioner points: For location and number of power points and air-conditioner points, please refer to the "Schedule of Mechanical & Electrical Provisions of Residential Properties".
h) Gas Supply	Not Applicable.
i) Washing Machine Connection Point	Location: Provided in open kitchen Design: water supply connection point of a pipe of 22 mm in diameter, drainage connection point of pipe of 40 mm in diameter.
j) Water Supply	Material of water pipes: Copper Water pipes are concealed in part and exposed in part. All exposed pipeworks are enclosed in false ceilings, bulkhead or kitchen cabinets. Hot water is available.

4. Miscellaneous

Item	Description
a) Lifts	2 nos. of "CHEVALIER" passenger lifts (model no. SPACEL-III) are provided in Tower 1, one of passenger lifts serves from G/F to 6/F and one serves from G/F to main roof. 2 nos. of "CHEVALIER" passenger lifts (model no. SPACEL-III) are provided in Tower 2, one of passenger lifts serves from G/F to 6/F and one serves from G/F to main roof. 2 nos. of "CHEVALIER" passenger lifts (model no. SPACEL-III) are provided in Tower 3, one of passenger lifts serves from G/F to 6/F and one serves from G/F to main roof. 2 nos. of "CHEVALIER" passenger lifts (model no. SPACEL-III) are provided in Tower 5, one of passenger lifts serves from G/F to 6/F and one serves from G/F to main roof. (Remark : 4/F is omitted.)
b) Letter Box	Material: Stainless steel.
c) Refuse Collection	Means of refuse collection: Refuse storage & material recovery room is provided on each residential floor with central refuse collection chamber on G/F. The refuse is collected and removed by cleaners. Location of refuse room: Please refer to the Floor Plans of Residential Properties in the Development for the location of the reuse storage & material recovery room.
d) Water Meter, Electricity Meter and Gas Meter	Location: Separate water meters and electricity meters for individual unit are provided in the common water meter room and electric meter room on each residential floor. No gas meter.

5. Security Facilities

Description
Security system and equipment CCTV cameras at the main entrance hall of residential towers and all lift cars of residential towers are connected directly to the hall security / caretaker counter. Visitor intercom panel and smart card reader for the residents are provided at the main entrance hall of residential towers. Individual units are equipped with a door phone system connected to the main entrance hall security / caretaker counter.

6. Appliances

Please refer to the "Appliances Schedule" for brand name and model numbers of appliances.

Note:

The Vendor undertakes that if lifts or appliances of the specified brand name or model number are not installed in the Development, lifts or appliances of comparable quality will be installed.

FITTINGS, FINISHES AND APPLIANCES

裝置、裝修物料及設備

1. 外部裝修物料

項目	描述
a) 外牆	裝修物料的類型： 住宅大廈外牆鋪砌瓷磚，部份外用油漆及部份鋁百葉。 平台外牆鋪砌瓷磚，部份外用油漆及部份鋁百葉。
b) 窗	框的物料： 氟化碳噴塗鋁窗框。 玻璃的物料(惟下述單位的淋浴室及浴室玻璃除外)： 清玻璃。 淋浴室及浴室玻璃的物料： 磨砂玻璃提供於以下住宅單位之淋浴室及浴室： 淋浴室 第1座：1樓至3樓及5樓單位C及E 第2座：1樓至3樓及5樓至6樓單位M 第3座：1樓至3樓及5樓單位C及E 浴室 第1座：6樓單位C及D 第3座：6樓單位C及D
c) 窗台	不適用。
d) 花槽	鋪砌瓷磚。
e) 陽台或露台	所有露台均有蓋及裝有金屬欄杆。地台鋪砌瓷磚。牆身鋪砌瓷磚。 天花以油漆飾面。 不設陽台。
f) 乾衣設施	不適用。

2. 室內裝修物料

項目	描述
a) 大堂	牆壁的裝修物料的類型： 1. 地面入口大堂：天然石、部份鋪砌不銹鋼、鏡及玻璃。 2. 住宅層升降機大堂：瓷磚、部份鋪砌不銹鋼、鏡、天然石及玻璃。 地板的裝修物料的類型： 1. 地面入口大堂：天然石。 2. 住宅層升降機大堂：瓷磚。 天花板的裝修物料的類型： 1. 地面入口大堂：石膏板假天花配乳膠漆。 2. 住宅層升降機大堂：石膏板假天花配乳膠漆。
b) 內牆及天花板	客廳、飯廳及睡房的牆壁的裝修物料的類型： 批盪及髹乳膠漆。 客廳、飯廳及睡房的天花板的裝修物料的類型： 外露位置批盪髹乳膠漆、其他部分設有石膏板假天花及橫樑髹乳膠漆。
c) 內部地板	客廳、飯廳及睡房的地板及牆腳線的裝修物料的類型： 鋪砌瓷磚及木腳線。
d) 浴室	牆壁、地板及天花板的裝修物料的類型： 1. 地台鋪砌瓷磚。 2. 牆身鋪砌瓷磚至假天花(木櫃背牆身除外)。 3. 鋁假天花。
e) 廚房	牆壁、地板、天花板及灶台的裝修物料的類型： 1. 牆身的外露位置鋪砌瓷磚及髹乳膠漆至假天花水平。 2. 地台鋪砌瓷磚。 3. 石膏板假天花及髹油漆。 4. 灶台鋪設實心人造面料。

FITTINGS, FINISHES AND APPLIANCES

裝置、裝修物料及設備

3. 室內裝置

項目	描述
a) 門	<p>用料：</p> <ol style="list-style-type: none"> 單位大門：實心防火木門。 睡房門及浴室：實心木門。 淋浴室門：實心木門配木百葉。 露台門：鋁框門鑲配強化清玻璃。 工作平台門：鋁框門鑲配強化清玻璃。 平台門：鋁框門鑲配強化清玻璃。 <p>裝修物料：</p> <ol style="list-style-type: none"> 單位大門：木飾面。 睡房門及浴室：木飾面。 淋浴室門：木飾面。 露台門： <ol style="list-style-type: none"> 鋁框掩門配以氟化塗層及鑲配強化清玻璃提供於以下之住宅單位： <ol style="list-style-type: none"> 第1座：1樓至3樓、5樓及6樓單位M 第2座：1樓至3樓、5樓及6樓單位B 第5座：1樓至3樓、5樓及6樓單位B及K 鋁框趟門配以氟化塗層及鑲配強化清玻璃提供於其餘住宅單位。 工作平台門：鋁框掩門配以氟化塗層及鑲配強化清玻璃。 平台門： <ol style="list-style-type: none"> 鋁框掩門配以氟化塗層及鑲配強化清玻璃提供於以下之住宅單位： <ol style="list-style-type: none"> 第1座：1樓單位B、C、L及M；6樓單位C及D 第3座：1樓單位B及C；6樓單位C及D 鋁框趟門配以氟化塗層及鑲配強化清玻璃提供於其餘住宅單位。 <p>配件：</p> <ol style="list-style-type: none"> 單位大門：門鎖套裝、門氣鼓、防盜眼及門檔。 睡房門及浴室：門鎖套裝及拉手。 淋浴室門：門鎖套裝及拉手。 露台門：門鎖套裝及拉手。 工作平台門：門鎖套裝及拉手。 平台門：門鎖套裝及拉手。

項目	描述
b) 浴室	<p>裝置及設備的類型及用料：</p> <p>浴室：</p> <p>裝設鏡飾面木吊櫃、木製地櫃配天然石檯面、搪瓷坐廁、搪瓷洗手盆、鍍鉻花灑套裝、鍍鉻洗手盆水龍頭及鍍鉻廁紙架。</p> <p>淋浴室：</p> <p>裝設鏡飾面木吊櫃、木製地櫃配天然石檯面、鍍鉻洗手盆水龍頭、搪瓷坐廁、搪瓷洗手盆、鍍鉻廁紙架及鍍鉻毛巾架及鍍鉻花灑套裝。</p> <p>供水系統的類型及用料：</p> <p>由間接供水系統供水，冷熱供水系統均採用銅喉。</p> <p>沐浴設施的類型及用料：</p> <p>浴室：搪瓷鑄鐵浴缸。</p> <p>淋浴室：強化玻璃淋浴間。</p> <p>浴缸大小:1500 毫米(長) x 700 毫米(闊) x 418 毫米(深)</p>
c) 廚房	<p>洗滌盆的用料：</p> <p>不鏽鋼。</p> <p>供水系統的用料：</p> <p>冷熱供水系統物料用銅喉。</p> <p>廚櫃的用料及裝修物料：</p> <p>開放式廚房: 木製廚櫃配以實心人造塑料檯面。</p> <p>消防裝置及設備：</p> <p>開放式廚房內或附近的天花裝置煙霧探測器及消防花灑頭。</p> <p>所有其他裝置及設備的類型：</p> <p>鍍鉻冷熱水水龍頭。</p>
d) 睡房	沒有裝置。
e) 電話	<p>接駁點的位置及數目：</p> <p>客廳均裝有電話接駁點。</p> <p>有關接駁點的位置及數目，請參考“住宅物業機電裝置數量說明表”。</p>
f) 天線	<p>接駁點的位置及數目：</p> <p>客廳及睡房均裝有電視/收音機天線接駁點。</p> <p>有關電視/收音機接駁點的位置及數目，請參考“住宅物業機電裝置數量說明表”。</p>

FITTINGS, FINISHES AND APPLIANCES

裝置、裝修物料及設備

項目	描述
g) 電力裝置	<p>供電附件： 客廳、飯廳、睡房、廚房及浴室均裝有隱藏導管供燈掣及插座。提供三相電力並裝設微型斷路器及漏電斷路器。</p> <p>電插座及空調機接駁點的位置及數目： 有關電插座及空調機接駁點的位置及數目，請參考“住宅物業機電裝置數量說明表”。</p>
h) 氣體供應	不適用。
i) 洗衣機接駁點	<p>位置： 設於開放式廚房。</p> <p>設計： 來水接駁喉管接駁點直徑為22毫米，去水接駁喉管接駁點直徑為40毫米。</p>
j) 供水	<p>水管的用料：銅</p> <p>水管部份隱藏部份外露。外露水管內藏於假天花，假陣及櫃中。有熱水供應。</p>

4. 雜項

項目	描述
a) 升降機	<p>設有2部「其士」客用升降機(產品型號：SPACEL-III)提供在第1座，其中1部客用升降機直達地面至6樓及1部直達地面至主天台。</p> <p>設有2部「其士」客用升降機(產品型號：SPACEL-III)提供在第2座，其中1部客用升降機直達地面至6樓及1部直達地面至主天台。</p> <p>設有2部「其士」客用升降機(產品型號：SPACEL-III)提供在第3座，其中1部客用升降機直達地面至6樓及1部直達地面至主天台。</p> <p>設有2部「其士」客用升降機(產品型號：SPACEL-III)提供在第5座，其中1部客用升降機直達地面至6樓及1部直達地面至主天台。</p> <p>(備註：不設4樓。)</p>
b) 信箱	用料：不銹鋼。
c) 垃圾收集	<p>垃圾收集的方法： 每層住宅層設有垃圾及物料回收房，另中央垃圾收集房設於地面。垃圾由清潔工人收集及運送。</p> <p>垃圾房的位置： 垃圾及物料回收房位置請參考住宅樓面平面圖。</p>
d) 水錶、電錶、氣體錶	<p>位置： 每層住宅層的公用水電錶房及電錶房內各自裝有每住宅戶專用之獨立水錶及電錶。沒有煤氣錶。</p>

5. 保安設施

描述
<p>保安系統及設備： 住宅大廈入口大堂及所有電梯內均有閉路電視，直接通往大堂保安/管理處。住宅大廈入口大堂均有訪客對講系統及住戶專用智能卡系統。</p> <p>住宅單位設有對講機連接入口大堂保安/管理處。</p>

6. 設備

有關設備品牌及產品型號，請參閱“設備說明表”。

備註：

賣方承諾如發展項目中沒有安裝指明的品牌名稱或產品型號的升降機或設備，便會安裝品質相若的升降機或設備。

FITTINGS, FINISHES AND APPLIANCES

裝置、裝修物料及設備

APPLIANCES SCHEDULE - AIR CONDITIONERS

設備說明表 - 冷氣機

Tower 座數	Floor 樓層	Units 單位	Brand Name 品牌名稱	Model No. 產品型號	
				Outdoor 室外機	Indoor 室內機
Tower 1 第1座	1/F to 3/F and 5/F 1樓至3樓及5樓	D	DAIKIN 大金	3MKS58EVMA	FTKS25 & FTKS35
Tower 2 第2座	1/F to 3/F and 5/F 1樓至3樓及5樓	G & J			
	6/F 6樓	G			
Tower 3 第3座	1/F, 2/F, 3/F and 5/F 1樓、2樓、3樓及5樓	D			
Tower 5 第5座	1/F to 3/F and 5/F 1樓至3樓及5樓	A, G, J, K, L & N			
	6/F 6樓	A, G, K, L & N			
Tower 1 第1座	1/F to 3/F and 5/F to 6/F 1樓至3樓及5樓至6樓	G & H	DAIKIN 大金	3MKS58EVMA	FTKS25 & FTKS50
Tower 2 第2座	1/F to 3/F and 5/F 1樓至3樓及5樓	F, H & M			
	6/F 6樓	F			
Tower 3 第3座	1/F to 3/F and 5/F to 6/F 1樓至3樓及5樓至6樓	G & H			
Tower 5 第5座	1/F to 3/F and 5/F 1樓至3樓及5樓	F & H			
	6/F 6樓	F			
Tower 2 第2座	1/F to 3/F and 5/F to 6/F 1樓至3樓及5樓至6樓	L & K	DAIKIN 大金	2MXS50F	FTKS25 & FTKS35

Tower 座數	Floor 樓層	Units 單位	Brand Name 品牌名稱	Model No. 產品型號	
				Outdoor 室外機	Indoor 室內機
Tower 1 第1座	1/F to 3/F and 5/F to 6/F 1樓至3樓及5樓至6樓	A & N	DAIKIN 大金	3MKS58EVMA	FTKS35 & FTKS50
Tower 2 第2座	1/F to 3/F and 5/F 1樓至3樓及5樓	A & P			
	6/F 6樓	A, M & P			
Tower 3 第3座	1/F to 3/F and 5/F to 6/F 1樓至3樓及5樓至6樓	A & N			
Tower 1 第1座	1/F to 3/F and 5/F to 6/F 1樓至3樓及5樓至6樓	F, J, K & M	DAIKIN 大金	3MKS75EVMA	FTKS25 & FTKS35
Tower 2 第2座	1/F to 3/F and 5/F 1樓至3樓及5樓	D, E & N			
	6/F 6樓	B, D, E & N			
Tower 3 第3座	1/F to 3/F and 5/F to 6/F 1樓至3樓及5樓至6樓	F, J, K & M			
Tower 5 第5座	1/F to 3/F and 5/F to 6/F 1樓至3樓及5樓至6樓	D & E			

Note:

The Vendor undertakes that if lifts or appliances of the specified brand name or model number are not installed in the Development, lifts or appliances of comparable quality will be installed.

備註:

賣方承諾如發展項目中沒有安裝指明的品牌名稱或產品型號的升降機或設備，便會安裝品質相若的升降機或設備。

FITTINGS, FINISHES AND APPLIANCES

裝置、裝修物料及設備

APPLIANCES SCHEDULE - AIR CONDITIONERS

設備說明表 – 冷氣機

Tower 座數	Floor 樓層	Units 單位	Brand Name 品牌名稱	Model No. 產品型號	
				Outdoor 室外機	Indoor 室內機
Tower 1 第1座	1/F to 3/F and 5/F to 6/F 1樓至3樓及5樓至6樓	B & L	DAIKIN 大金	3MKS75EVMA	FTKS25 & FTKS50
Tower 2 第2座	1/F to 3/F and 5/F 1樓至3樓及5樓	B & C			
	6/F 6樓	C			
Tower 3 第3座	1/F to 3/F and 5/F to 6/F 1樓至3樓及5樓至6樓	B & L			
Tower 5 第5座	1/F to 3/F and 5/F to 6/F 1樓至3樓及5樓至6樓	B, C & M			
Tower 1 第1座	1/F to 3/F and 5/F 1樓至3樓及5樓	C	DAIKIN 大金	4MKS90EVMA	FTKS25 & FTKS71
Tower 3 第3座	1/F to 3/F and 5/F 1樓至3樓及5樓	C			
Tower 1 第1座	1/F to 3/F and 5/F 1樓至3樓及5樓	E	DAIKIN 大金	4MKS90EVMA	FTKS25, FTKS35 & FTKS71
	6/F 6樓	C & D			
Tower 3 第3座	1/F to 3/F and 5/F 1樓至3樓及5樓	E			
	6/F 6樓	C & D			
Tower 2 第2座	6/F 6樓	H	DAIKIN 大金	4MKS90EVMA	FTKS20, FTKS35 & FTKS50
Tower 3 第3座	6/F 6樓	H			

Note:

The Vendor undertakes that if lifts or appliances of the specified brand name or model number are not installed in the Development, lifts or appliances of comparable quality will be installed.

備註：

賣方承諾如發展項目中沒有安裝指明的品牌名稱或產品型號的升降機或設備，便會安裝品質相若的升降機或設備。

FITTINGS, FINISHES AND APPLIANCES

裝置、裝修物料及設備

APPLIANCES SCHEDULE - KITCHEN

設備說明表 – 廚房

Appliance 設備	Brand Name 品牌名稱	Model No. 產品型號	Units 單位		
Built-in Microwave Oven 嵌入式微波爐	Cristal	C20L-800BVV	All Units 所有住宅單位		
Cooker Hood 抽油煙機	Cristal	T60AMS	All Units 所有住宅單位		
2 in 1 Washer & Dryer 二合一洗衣乾衣機	Cristal	WDC1260FMW	All Units 所有住宅單位		
Built-in Oven 嵌入式焗爐	Cristal	LIGTH	Tower 1 & 3 6/F Unit C & D 第1及3座6樓單位C及D		
Induction Hob (Three Zones) 電磁爐(三頭)	Cristal	CI-58S3BX	1/F: Tower 1: Unit B, C, E, F, G, H, J, K, L & M Tower 2: Unit B, C, D, E, H, K & L Tower 3: Unit B, C, E, F, G, H, J, K, L & M Tower 5: Unit B, C, D, E, H, K & M 1樓: 第1座: 單位 B、C、E、F、G、H、J、K、L & M 第2座: 單位 B、C、D、E、H、K & L 第3座: 單位 B、C、E、F、G、H、J、K、L & M 第5座: 單位 B、C、D、E、H、K & M	2/F to 3/F and 5/F: Tower 1: Unit B, C, E, F, G, H, J, K, L & M Tower 2: Unit B, C, D, E, H, K & L Tower 3: Unit B, C, E, F, G, H, J, K, L & M Tower 5: Unit B, C, D, E, H, K & M 2至3樓及5樓: 第1座: 單位 B、C、E、F、G、H、J、K、L & M 第2座: 單位 B、C、D、E、H、K & L 第3座: 單位 B、C、E、F、G、H、J、K、L & M 第5座: 單位 B、C、D、E、H、K & M	6/F: Tower 1: Unit B, C, D, F, G, H, J, K, L & M Tower 2: Unit B, C, D, E, H, K & L Tower 3: Unit B, C, D, F, G, H, J, K, L & M Tower 5: Unit B, C, D, E, H, K & M 6樓: 第1座: 單位 B、C、D、F、G、H、J、K、L & M 第2座: 單位 B、C、D、E、H、K & L 第3座: 單位 B、C、D、F、G、H、J、K、L & M 第5座: 單位 B、C、D、E、H、K & M
Induction Hob (Two Zones) 電磁爐(二頭)	Cristal	PE2926ID	1/F: Tower 1: Unit A, D & N Tower 2: Unit A, F, G, J, M, N & P Tower 3: Unit A, D & N Tower 5: Unit A, F, G, J, L & N 1樓: 第1座: 單位 A、D & N 第2座: 單位 A、F、G、J、M、N & P 第3座: 單位 A、D & N 第5座: 單位 A、F、G、J、L & N	2/F to 3/F and 5/F: Tower 1: Unit A, D & N Tower 2: Unit A, F, G, J, M, N & P Tower 3: Unit A, D & N Tower 5: Unit A, F, G, J, L & N 2至3樓及5樓: 第1座: 單位 A、D & N 第2座: 單位 A、F、G、J、M、N & P 第3座: 單位 A、D & N 第5座: 單位 A、F、G、J、L & N	6/F: Tower 1: Unit A & N Tower 2: Unit A, F, G, M, N & P Tower 3: Unit A & N Tower 5: Unit A, F, G, L & N 6樓: 第1座: 單位 A & N 第2座: 單位 A、F、G、M、N & P 第3座: 單位 A & N 第5座: 單位 A、F、G、L & N

Note:

The Vendor undertakes that if lifts or appliances of the specified brand name or model number are not installed in the Development, lifts or appliances of comparable quality will be installed.

備註:

賣方承諾如發展項目中沒有安裝指明的品牌名稱或產品型號的升降機或設備，便會安裝品質相若的升降機或設備。

FITTINGS, FINISHES AND APPLIANCES

裝置、裝修物料及設備

APPLIANCES SCHEDULE - KITCHEN

設備說明表 – 廚房

Appliance 設備	Brand Name 品牌名稱	Model No. 產品型號	Units 單位		
Refrigerator 雪櫃	Cristal	V123MW	1/F: Tower 1: Unit A, D & N Tower 2: Unit A, F, J, K, M, N & P Tower 3: Unit A, D & N Tower 5: Unit A, F, J, L & N 1樓: 第1座：單位 A、D & N 第2座：單位 A、F、J、K、M、N & P 第3座：單位 A、D & N 第5座：單位 A、F、J、L & N	2/F to 3/F and 5/F: Tower 1: Unit A, D & N Tower 2: Unit A, F, J, K, M, N & P Tower 3: Unit A, D & N Tower 5: Unit A, F, J, L & N 2至3樓及5樓: 第1座：單位 A、D & N 第2座：單位 A、F、J、K、M、N & P 第3座：單位 A、D & N 第5座：單位 A、F、J、L & N	6/F: Tower 1: Unit A & N Tower 2: Unit A, F, H, K, M, N & P Tower 3: Unit A & N Tower 5: Unit A, F, H, L & N 6樓: 第1座：單位 A & N 第2座：單位 A、F、H、K、M、N & P 第3座：單位 A & N 第5座：單位 A、F、H、L & N
	Cristal	V252MW	1/F: Tower 1: Unit B, C, E, F, G, H, J, K, L & M Tower 2: Unit B, C, D, E, G, H & L Tower 3: Unit B, C, E, F, G, H, J, K, L & M Tower 5: Unit B, C, D, E, G, H, K & M 1樓: 第1座：單位 B、C、E、F、G、H、J、K、L & M 第2座：單位 B、C、D、E、G、H & L 第3座：單位 B、C、E、F、G、H、J、K、L & M 第5座：單位 B、C、D、E、G、H、K & M	2/F to 3/F and 5/F: Tower 1: Unit B, C, E, F, G, H, J, K, L & M Tower 2: Unit B, C, D, E, G, H & L Tower 3: Unit B, C, E, F, G, H, J, K, L & M Tower 5: Unit B, C, D, E, H, G, K & M 2至3樓及5樓: 第1座：單位 B、C、E、F、G、H、J、K、L & M 第2座：單位 B、C、D、E、G、H & L 第3座：單位 B、C、E、F、G、H、J、K、L & M 第5座：單位 B、C、D、E、G、H、K & M	6/F: Tower 1: Unit B, C, D, F, G, H, J, K, L & M Tower 2: Unit B, C, D, E, G & L Tower 3: Unit B, C, D, F, G, H, J, K, L & M Tower 5: Unit B, C, D, E, G, K & M 6樓: 第1座：單位 B、C、D、F、G、H、J、K、L & M 第2座：單位 B、C、D、E、G & L 第3座：單位 B、C、D、F、G、H、J、K、L & M 第5座：單位 B、C、D、E、G、K & M

Note:

The Vendor undertakes that if lifts or appliances of the specified brand name or model number are not installed in the Development, lifts or appliances of comparable quality will be installed.

備註：

賣方承諾如發展項目中沒有安裝指明的品牌名稱或產品型號的升降機或設備，便會安裝品質相若的升降機或設備。

FITTINGS, FINISHES AND APPLIANCES

裝置、裝修物料及設備

APPLIANCES SCHEDULE - BATHROOM / SHOWER ROOM

設備說明表 – 浴室/淋浴室

Appliance 設備	Brand Name 品牌名稱	Model No. 產品型號	Units 單位
Electric Water Heater 電熱水爐	Stiebel Eltron	HDB-E 21 SI	All Units 所有住宅單位
Thermo Ventilator 浴室寶	Cristal	DM168	All Units 所有住宅單位

Note:

The Vendor undertakes that if lifts or appliances of the specified brand name or model number are not installed in the Development, lifts or appliances of comparable quality will be installed.

備註：

賣方承諾如發展項目中沒有安裝指明的品牌名稱或產品型號的升降機或設備，便會安裝品質相若的升降機或設備。

FITTINGS, FINISHES AND APPLIANCES

裝置、裝修物料及設備

SCHEDULE OF MECHANICAL & ELECTRICAL PROVISIONS OF RESIDENTIAL PROPERTIES

住宅物業機電裝置數量說明表

Tower 1
第1座

Location 位置	Description 描述	1/F (1樓)													
		A	B	C	D	E	F	G	H	J	K	L	M	N	
Main Entrance 大門入口	Door Bell Push Button 門鈴按鈴	1	1	1	1	1	1	1	1	1	1	1	1	1	
Living Room / Dining Room 客廳/飯廳	Switch for Indoor A/C Unit 室內空調機開關掣	1	2	1	1	1	2	1	1	2	2	2	2	1	
	13A Twin Socket Outlet 13安培雙位電插座	2	3	3	2	3	3	3	2	3	3	3	3	2	
	TV / FM Outlet 電視/電台插座	2	2	2	2	2	2	2	2	2	2	2	2	2	
	Telephone Outlet 電話插座	2	2	2	2	2	2	2	2	2	2	2	2	2	
	Lighting Switch 燈掣	3	4	3	3	3	2	3	3	4	4	4	4	3	
	Lighting Point 燈位	3	4	3	3	3	3	3	4	4	4	4	4	3	
	Door Phone 門口對講機	1	1	1	1	1	1	1	1	1	1	1	1	1	
	Door Bell 門鈴	1	1	1	1	1	1	1	1	1	1	1	1	1	
Smoke Detector 煙霧感應器	-	1	-	-	-	1	-	-	1	1	1	1	-		
Bedroom 1 睡房 1	Switch for Indoor A/C Unit 室內空調機開關掣	1	1	1	1	1	1	1	1	1	1	1	1	1	
	13A Twin Socket Outlet 13安培雙位電插座	1	1	1	1	1	1	1	1	1	1	1	1	1	
	13A Socket Outlet 13安培電插座	-	-	-	1	-	-	-	-	-	-	-	-	-	
	TV / FM Outlet 電視/電台插座	1	1	1	1	1	1	1	1	1	1	1	1	1	
	Lighting Switch 燈掣	1	1	1	1	1	1	1	1	1	1	1	1	1	
	Lighting Point 燈位	1	1	1	1	1	1	1	1	1	1	1	1	1	
Bedroom 2 睡房 2	Switch for Indoor A/C Unit 室內空調機開關掣	-	-	1	-	1	-	-	-	-	-	-	-	-	
	13A Twin Socket Outlet 13安培雙位電插座	-	-	1	-	1	-	-	-	-	-	-	-	-	
	TV / FM Outlet 電視/電台插座	-	-	1	-	1	-	-	-	-	-	-	-	-	
	Lighting Switch 燈掣	-	-	1	-	1	-	-	-	-	-	-	-	-	
	Lighting Point 燈位	-	-	1	-	1	-	-	-	-	-	-	-	-	

Notes :

1. "1, 2,"denotes the quantity of such provision(s) provided in the residential unit.
2. The quantity of the lighting switch shown in the schedule denotes the quantity of switch faceplate.
3. 4/F is omitted.

備註：

1. "1, 2," 表示提供於該住宅單位內的裝置數量。
2. 說明表所顯示的燈掣數量是表示燈掣面板的數量。
3. 不設四樓。

FITTINGS, FINISHES AND APPLIANCES

裝置、裝修物料及設備

SCHEDULE OF MECHANICAL & ELECTRICAL PROVISIONS OF RESIDENTIAL PROPERTIES

住宅物業機電裝置數量說明表

Tower 1
第1座

Location 位置	Description 描述	1/F (1樓)													
		A	B	C	D	E	F	G	H	J	K	L	M	N	
Shower Room 淋浴室	Fuse Spur Unit for Thermal Ventilator 浴室寶接線位	1	1	1	1	1	1	1	1	1	1	1	1	1	
	Thermal Ventilator Remote Control 浴室寶遙控器	1	1	1	1	1	1	1	1	1	1	1	1	1	
	Power Supply Point for Electric Water Heater 電熱水爐供電位	1	1	1	1	1	1	1	1	1	1	1	1	1	
	Electric Water Heater Remote Control 電熱水遙控器	1	1	1	1	1	1	1	1	1	1	1	1	1	
	13A Single Socket Outlet 13安培單位電插座	1	1	1	1	1	1	1	1	1	1	1	1	1	
	Connection Unit for Light Trough 燈槽接線座	1	1	1	1	1	1	1	1	1	1	1	1	1	
	Lighting Point 燈位	2	2	2	2	2	2	2	2	2	2	2	2	2	
	Lighting Switch 燈掣	2	2	2	2	2	2	2	2	2	2	2	2	2	
	Switch for Thermal Ventilator 浴室寶開關掣	1	1	1	1	1	1	1	1	1	1	1	1	1	
Open Kitchen 開放式廚房	Lighting Switch 燈掣	2	2	2	2	2	2	2	2	2	2	2	2	2	
	Lighting Point 燈位	2	2	2	1	2	1	3	1	2	2	2	2	2	
	13A Twin Socket Outlet 13安培雙位電插座	1	1	1	1	1	1	1	1	1	1	1	1	1	
	Fuse Spur Unit for Kitchen Cabinet Light 廚櫃燈接線位	1	1	1	1	1	1	1	1	1	1	1	1	1	
	Fuse Spur Unit Point for Cookerhood 抽油煙機接線位	1	1	1	1	1	1	1	1	1	1	1	1	1	
	Connection Unit for Induction Cooker Hob 電磁煮食爐接線位	1	1	1	1	1	1	1	1	1	1	1	1	1	
	Switch for Cooker Hob 電磁煮食爐開關掣	1	1	1	1	1	1	1	1	1	1	1	1	1	
	Socket Outlet for Microwave Oven 微波爐電插座	1	1	1	1	1	1	1	1	1	1	1	1	1	
	Socket Outlet for Refrigerator 雪櫃電插座	1	1	1	1	1	1	1	1	1	1	1	1	1	
	Miniature Circuit Breakers Board 微型總電掣箱	1	1	1	1	1	1	1	1	1	1	1	1	1	
	Smoke Detector 煙霧感應器	1	1	1	1	1	1	1	1	1	1	1	1	1	
Sprinkler Head 消防花灑頭 (Under ceiling & in ceiling void 假天花下及假天花內)	2	2	2	2	2	2	2	2	2	2	2	2	2		

Notes :

- "1, 2,"denotes the quantity of such provision(s) provided in the residential unit.
- The quantity of the lighting switch shown in the schedule denotes the quantity of switch faceplate.
- 4/F is omitted.

備註：

- "1, 2," 表示提供於該住宅單位內的裝置數量。
- 說明表所顯示的燈掣數量是表示燈掣面板的數量。
- 不設四樓。



This page is deliberately left in blank 此版乃特意留白

FITTINGS, FINISHES AND APPLIANCES

裝置、裝修物料及設備

SCHEDULE OF MECHANICAL & ELECTRICAL PROVISIONS OF RESIDENTIAL PROPERTIES

住宅物業機電裝置數量說明表

Tower 1
第1座

Location 位置	Description 描述	1/F (1樓)													
		A	B	C	D	E	F	G	H	J	K	L	M	N	
Garden (For Units on 1/F Only) 花園 (僅提供於1樓之住宅單位)	Light Fittings 燈位	-	-	-	-	2	2	2	2	2	2	-	-	-	
	13A Weatherproof Single Socket Outlet 13安培防水單位電插座	-	-	-	-	2	2	2	2	2	2	-	-	-	
	Lighting Switch 燈掣	-	-	-	-	1	1	1	1	1	1	-	-	-	
Balcony 露台	Lighting Switch 燈掣	1	1	1	-	-	-	-	-	-	-	1	1	1	
	Lighting Point 燈位	1	1	1	-	-	-	-	-	-	-	1	1	1	
Utility Platform 工作平台	Lighting Switch 燈掣	1	1	1	-	-	-	-	-	-	-	1	1	1	
	Lighting Point 燈位	1	1	1	-	-	-	-	-	-	-	1	1	1	
Flat Roof 平台	Lighting Switch 燈掣	-	-	1	1	1	-	-	-	-	-	-	-	-	
	Lighting Point 燈位	-	-	1	1	1	-	-	-	-	-	-	-	-	

Notes :

1. "1, 2," denotes the quantity of such provision(s) provided in the residential unit.
2. The quantity of the lighting switch shown in the schedule denotes the quantity of switch faceplate.
3. 4/F is omitted.

備註：

1. "1, 2," 表示提供於該住宅單位內的裝置數量。
2. 說明表所顯示的燈掣數量是表示燈掣面板的數量。
3. 不設四樓。

FITTINGS, FINISHES AND APPLIANCES

裝置、裝修物料及設備

SCHEDULE OF MECHANICAL & ELECTRICAL PROVISIONS OF RESIDENTIAL PROPERTIES

住宅物業機電裝置數量說明表

Tower 1
第1座

Location 位置	Description 描述	2/F, 3/F and 5/F (2樓、3樓及5樓)													
		A	B	C	D	E	F	G	H	J	K	L	M	N	
Main Entrance 大門入口	Door Bell Push Button 門鈴按鈴	1	1	1	1	1	1	1	1	1	1	1	1	1	
Living Room / Dining Room 客廳/飯廳	Switch for Indoor A/C Unit 室內空調機開關掣	1	2	1	1	1	2	1	1	2	2	2	2	1	
	13A Twin Socket Outlet 13安培雙位電插座	2	3	3	2	3	3	3	2	3	3	3	3	2	
	TV / FM Outlet 電視/電台插座	2	2	2	2	2	2	2	2	2	2	2	2	2	
	Telephone Outlet 電話插座	2	2	2	2	2	2	2	2	2	2	2	2	2	
	Lighting Switch 燈掣	3	4	3	3	3	4	3	3	4	4	4	4	3	
	Lighting Point 燈位	3	4	3	3	3	4	3	4	4	4	4	4	3	
	Door Phone 門口對講機	1	1	1	1	1	1	1	1	1	1	1	1	1	
	Door Bell 門鈴	1	1	1	1	1	1	1	1	1	1	1	1	1	
Smoke Detector 煙霧感應器	-	1	-	-	-	1	-	-	1	1	1	1	-		
Bedroom 1 睡房 1	Switch for Indoor A/C Unit 室內空調機開關掣	1	1	1	1	1	1	1	1	1	1	1	1	1	
	13A Twin Socket Outlet 13安培雙位電插座	1	1	1	1	1	1	1	1	1	1	1	1	1	
	13A Socket Outlet 13安培電插座	-	-	-	1	-	-	-	-	-	-	-	-	-	
	TV / FM Outlet 電視/電台插座	1	1	1	1	1	1	1	1	1	1	1	1	1	
	Lighting Switch 燈掣	1	1	1	1	1	1	1	1	1	1	1	1	1	
	Lighting Point 燈位	1	1	1	1	1	1	1	1	1	1	1	1	1	
Bedroom 2 睡房 2	Switch for Indoor A/C Unit 室內空調機開關掣	-	-	1	-	1	-	-	-	-	-	-	-	-	
	13A Twin Socket Outlet 13安培雙位電插座	-	-	1	-	1	-	-	-	-	-	-	-	-	
	TV / FM Outlet 電視/電台插座	-	-	1	-	1	-	-	-	-	-	-	-	-	
	Lighting Switch 燈掣	-	-	1	-	1	-	-	-	-	-	-	-	-	
	Lighting Point 燈位	-	-	1	-	1	-	-	-	-	-	-	-	-	

Notes :

1. "1, 2,"denotes the quantity of such provision(s) provided in the residential unit.
2. The quantity of the lighting switch shown in the schedule denotes the quantity of switch faceplate.
3. 4/F is omitted.

備註：

1. "1, 2," 表示提供於該住宅單位內的裝置數量。
2. 說明表所顯示的燈掣數量是表示燈掣面板的數量。
3. 不設四樓。

FITTINGS, FINISHES AND APPLIANCES

裝置、裝修物料及設備

SCHEDULE OF MECHANICAL & ELECTRICAL PROVISIONS OF RESIDENTIAL PROPERTIES

住宅物業機電裝置數量說明表

Tower 1
第1座

Location 位置	Description 描述	2/F, 3/F and 5/F (2樓、3樓及5樓)													
		A	B	C	D	E	F	G	H	J	K	L	M	N	
Shower Room 淋浴室	Fuse Spur Unit for Thermal Ventilator 浴室竇接線位	1	1	1	1	1	1	1	1	1	1	1	1	1	
	Thermal Ventilator Remote Control 浴室竇遙控器	1	1	1	1	1	1	1	1	1	1	1	1	1	
	Power Supply Point for Electric Water Heater 電熱水爐供電位	1	1	1	1	1	1	1	1	1	1	1	1	1	
	Electric Water Heater Remote Control 電熱水遙控器	1	1	1	1	1	1	1	1	1	1	1	1	1	
	13A Single Socket Outlet 13安培單位電插座	1	1	1	1	1	1	1	1	1	1	1	1	1	
	Connection Unit for Light Trough 燈槽接線座	1	1	1	1	1	1	1	1	1	1	1	1	1	
	Lighting Point 燈位	2	2	2	2	2	2	2	2	2	2	2	2	2	
	Lighting Switch 燈掣	2	2	2	2	2	2	2	2	2	2	2	2	2	
Switch for Thermal Ventilator 浴室竇開關掣	1	1	1	1	1	1	1	1	1	1	1	1	1		
Open Kitchen 開放式廚房	Lighting Switch 燈掣	2	2	2	2	2	2	2	2	2	2	2	2	2	
	Lighting Point 燈位	2	2	2	1	2	2	3	1	2	2	2	2	2	
	13A Twin Socket Outlet 13安培雙位電插座	1	1	1	1	1	1	1	1	1	1	1	1	1	
	Fuse Spur Unit for Kitchen Cabinet Light 廚櫃燈接線位	1	1	1	1	1	1	1	1	1	1	1	1	1	
	Fuse Spur Unit Point for Cookerhood 抽油煙機接線位	1	1	1	1	1	1	1	1	1	1	1	1	1	
	Connection Unit for Induction Cooker Hob 電磁煮食爐接線位	1	1	1	1	1	1	1	1	1	1	1	1	1	
	Switch for Cooker Hob 電磁煮食爐開關掣	1	1	1	1	1	1	1	1	1	1	1	1	1	
	Socket Outlet for Microwave Oven 微波爐電插座	1	1	1	1	1	1	1	1	1	1	1	1	1	
	Socket Outlet for Refrigerator 雪櫃電插座	1	1	1	1	1	1	1	1	1	1	1	1	1	
	Miniature Circuit Breakers Board 微型總電掣箱	1	1	1	1	1	1	1	1	1	1	1	1	1	
	Smoke Detector 煙霧感應器	1	1	1	1	1	1	1	1	1	1	1	1	1	
Sprinkler Head 消防花灑頭 (Under ceiling & in ceiling void 假天花下及假天花內)	2	2	2	2	2	2	2	2	2	2	2	2	2		

Notes :

- "1, 2,"denotes the quantity of such provision(s) provided in the residential unit.
- The quantity of the lighting switch shown in the schedule denotes the quantity of switch faceplate.
- 3./F is omitted.

備註：

- "1, 2," 表示提供於該住宅單位內的裝置數量。
- 說明表所顯示的燈掣數量是表示燈掣面板的數量。
- 不設四樓。



This page is deliberately left in blank 此版乃特意留白

FITTINGS, FINISHES AND APPLIANCES

裝置、裝修物料及設備

SCHEDULE OF MECHANICAL & ELECTRICAL PROVISIONS OF RESIDENTIAL PROPERTIES

住宅物業機電裝置數量說明表

Tower 1
第1座

Location 位置	Description 描述	2/F, 3/F and 5/F (2樓、3樓及5樓)												
		A	B	C	D	E	F	G	H	J	K	L	M	N
Balcony 露台	Lighting Switch 燈掣	1	1	1	1	1	1	1	1	1	1	1	1	1
	Lighting Point 燈位	1	1	1	1	1	1	1	1	1	1	1	1	1
Utility Platform 工作平台	Lighting Switch 燈掣	1	1	1	1	1	1	1	1	1	1	1	1	1
	Lighting Point 燈位	1	1	1	1	1	1	1	1	1	1	1	1	1

Notes :

1. "1, 2,"denotes the quantity of such provision(s) provided in the residential unit.
2. The quantity of the lighting switch shown in the schedule denotes the quantity of switch faceplate.
3. 4/F is omitted.

備註：

1. "1, 2," 表示提供於該住宅單位內的裝置數量。
2. 說明表所顯示的燈掣數量是表示燈掣面板的數量。
3. 不設四樓。

FITTINGS, FINISHES AND APPLIANCES

裝置、裝修物料及設備

SCHEDULE OF MECHANICAL & ELECTRICAL PROVISIONS OF RESIDENTIAL PROPERTIES

住宅物業機電裝置數量說明表

Tower 1
第1座

Location 位置	Description 描述	6/F (6樓)											
		A	B	C	D	F	G	H	J	K	L	M	N
Main Entrance 大門入口	Door Bell Push Button 門鈴按鈴	1	1	1	1	1	1	1	1	1	1	1	1
Living Room / Dining Room 客廳/飯廳	Switch for Indoor A/C Unit 室內空調機開關掣	1	2	1	1	2	1	1	2	2	2	2	1
	13A Twin Socket Outlet 13安培雙位電插座	2	3	2	2	3	3	2	3	3	3	3	2
	TV / FM Outlet 電視/電台插座	2	2	2	2	2	2	2	2	1	2	2	2
	Telephone Outlet 電話插座	2	2	2	2	2	2	2	2	1	2	2	2
	Lighting Switch 燈掣	3	4	4	4	4	3	3	3	4	4	3	3
	Lighting Point 燈位	3	4	4	4	4	3	4	3	4	4	3	3
	Door Phone 門口對講機	1	1	1	1	1	1	1	1	1	1	1	1
	Door Bell 門鈴	1	1	1	1	1	1	1	1	1	1	1	1
Smoke Detector 煙霧感應器	-	1	2	2	1	-	-	-	1	1	-	-	
Bedroom 1 睡房 1	Switch for Indoor A/C Unit 室內空調機開關掣	1	1	1	1	1	1	1	1	1	1	1	1
	13A Twin Socket Outlet 13安培雙位電插座	1	1	1	1	1	1	1	1	1	1	1	1
	13A Socket Outlet 13安培電插座	-	-	-	-	-	-	-	-	-	-	-	-
	TV / FM Outlet 電視/電台插座	1	1	1	1	1	1	1	1	1	1	1	1
	Lighting Switch 燈掣	1	1	1	1	1	1	1	1	1	1	1	1
	Lighting Point 燈位	1	1	1	1	1	1	1	1	1	1	1	1
Bedroom 2 睡房 2	Switch for Indoor A/C Unit 室內空調機開關掣	-	-	1	1	-	-	-	-	-	-	-	-
	13A Twin Socket Outlet 13安培雙位電插座	-	-	1	1	-	-	-	-	-	-	-	-
	TV / FM Outlet 電視/電台插座	-	-	1	1	-	-	-	-	-	-	-	-
	Lighting Switch 燈掣	-	-	1	1	-	-	-	-	-	-	-	-
	Lighting Point 燈位	-	-	1	1	-	-	-	-	-	-	-	-

Notes :

1. "1, 2,"denotes the quantity of such provision(s) provided in the residential unit.
2. The quantity of the lighting switch shown in the schedule denotes the quantity of switch faceplate.
3. 4/F is omitted.

備註：

1. "1, 2," 表示提供於該住宅單位內的裝置數量。
2. 說明表所顯示的燈掣數量是表示燈掣面板的數量。
3. 不設四樓。

FITTINGS, FINISHES AND APPLIANCES

裝置、裝修物料及設備

SCHEDULE OF MECHANICAL & ELECTRICAL PROVISIONS OF RESIDENTIAL PROPERTIES

住宅物業機電裝置數量說明表

Tower 1
第1座

Location 位置	Description 描述	6/F (6樓)											
		A	B	C	D	F	G	H	J	K	L	M	N
Shower Room 淋浴室	Fuse Spur Unit for Thermal Ventilator 浴室寶接線位	1	1	1	1	1	1	1	1	1	1	1	1
	Thermal Ventilator Remote Control 浴室寶遙控器	1	1	1	1	1	1	1	1	1	1	1	1
	Power Supply Point for Electric Water Heater 電熱水爐供電位	1	1	1	1	1	1	1	1	1	1	1	1
	Electric Water Heater Remote Control 電熱水遙控器	1	1	1	1	1	1	1	1	1	1	1	1
	13A Single Socket Outlet 13安培單位電插座	1	1	1	1	1	1	1	1	1	1	1	1
	Connection Unit for Light Trough 燈槽接線座	1	1	1	1	1	1	1	1	1	1	1	1
	Lighting Point 燈位	2	2	2	2	2	2	2	2	2	2	2	2
	Lighting Switch 燈掣	2	2	2	2	2	2	2	2	2	2	2	2
Switch for Thermal Ventilator 浴室寶開關掣	1	1	1	1	1	1	1	1	1	1	1	1	
Bathroom 浴室	Fuse Spur Unit for Thermal Ventilator 浴室寶接線位	-	-	1	1	-	-	-	-	-	-	-	-
	Thermal Ventilator Remote Control 浴室寶遙控器	-	-	1	1	-	-	-	-	-	-	-	-
	Connection Unit for Electric Water Heater 電熱水爐接線位	-	-	1	1	-	-	-	-	-	-	-	-
	Electric Water Heater Remote Control 電熱水遙控器	-	-	1	1	-	-	-	-	-	-	-	-
	13A Single Socket Outlet 13安培單位電插座	-	-	1	1	-	-	-	-	-	-	-	-
	Connection Unit for Light Trough 燈槽接線座	-	-	1	1	-	-	-	-	-	-	-	-
	Lighting Point 燈位	-	-	2	2	-	-	-	-	-	-	-	-
	Lighting Switch 燈掣	-	-	2	2	-	-	-	-	-	-	-	-
Switch for Thermal Ventilator 浴室寶開關掣	-	-	1	1	-	-	-	-	-	-	-	-	

Notes :

- "1, 2,"denotes the quantity of such provision(s) provided in the residential unit.
- The quantity of the lighting switch shown in the schedule denotes the quantity of switch faceplate.
- 4/F is omitted.

備註：

- "1, 2," 表示提供於該住宅單位內的裝置數量。
- 說明表所顯示的燈掣數量是表示燈掣面板的數量。
- 不設四樓。

FITTINGS, FINISHES AND APPLIANCES

裝置、裝修物料及設備

SCHEDULE OF MECHANICAL & ELECTRICAL PROVISIONS OF RESIDENTIAL PROPERTIES

住宅物業機電裝置數量說明表

Tower 1
第1座

Location 位置	Description 描述	6/F (6樓)											
		A	B	C	D	F	G	H	J	K	L	M	N
Open Kitchen 開放式廚房	Lighting Switch 燈掣	2	2	2	2	2	2	2	2	2	2	2	2
	Lighting Point 燈位	2	2	2	2	2	3	1	1	2	2	1	2
	13A Twin Socket Outlet 13安培雙位電插座	1	1	1	1	1	1	1	1	1	1	1	1
	Fuse Spur Unit for Kitchen Cabinet Light 廚櫃燈接線位	1	1	1	1	1	1	1	1	1	1	1	1
	Fuse Spur Unit Point for Cookerhood 抽油煙機接線位	1	1	1	1	1	1	1	1	1	1	1	1
	Connection Unit for Induction Cooker Hob 電磁煮食爐接線位	1	1	1	1	1	1	1	1	1	1	1	1
	Switch for Cooker Hob 電磁煮食爐開關掣	1	1	1	1	1	1	1	1	1	1	1	1
	Socket Outlet for Microwave Oven 微波爐電插座	1	1	1	1	1	1	1	1	1	1	1	1
	Socket Outlet for Refrigerator 雪櫃電插座	1	1	1	1	1	1	1	1	1	1	1	1
	Connection Unit for Oven 焗爐接線位	-	-	1	1	-	-	-	-	-	-	-	-
	Miniature Circuit Breakers Board 微型總電掣箱	1	1	1	1	1	1	1	1	1	1	1	1
	Smoke Detector 煙霧感應器	1	1	1	1	1	1	1	1	1	1	1	1
Sprinkler Head 消防花灑頭 (Under ceiling & in ceiling void 假天花下及假天花內)	2	2	2	2	2	2	2	2	2	2	2	2	
Balcony 露台	Lighting Switch 燈掣	1	1	-	-	1	1	1	1	1	1	1	1
	Lighting Point 燈位	1	1	-	-	1	1	1	1	1	1	1	1
Utility Platform 工作平台	Lighting Switch 燈掣	1	1	1	1	1	1	1	1	1	1	1	1
	Lighting Point 燈位	1	1	1	1	1	1	1	1	1	1	1	1
Flat Roof 平台	Lighting Switch 燈掣	-	-	1	1	-	-	-	-	-	-	-	-
	Lighting Point 燈位	-	-	1	1	-	-	-	-	-	-	-	-

Notes :

1. "1, 2," denotes the quantity of such provision(s) provided in the residential unit.
2. The quantity of the lighting switch shown in the schedule denotes the quantity of switch faceplate.
3. 4/F is omitted.

備註：

1. "1, 2," 表示提供於該住宅單位內的裝置數量。
2. 說明表所顯示的燈掣數量是表示燈掣面板的數量。
3. 不設四樓。

This page is deliberately left in blank 此版乃特意留白

FITTINGS, FINISHES AND APPLIANCES

裝置、裝修物料及設備

SCHEDULE OF MECHANICAL & ELECTRICAL PROVISIONS OF RESIDENTIAL PROPERTIES

住宅物業機電裝置數量說明表

Tower 1
第1座

Location 位置	Description 描述	6/F (6樓)											
		A	B	C	D	F	G	H	J	K	L	M	N
Staircase access to MR/F 通往主天台的樓梯	Light Fittings 燈位	-	-	3	3	-	-	-	-	3	3	-	-
	Lighting Switch 燈掣	-	-	3	3	-	-	-	-	3	3	-	-
	Smoke Detector 煙霧感應器	-	-	1	1	-	-	-	-	1	1	-	-
MR/F 主天台	Light Fittings 燈位	-	-	8	8	-	-	-	-	8	8	-	-
	13A Weatherproof Single Socket Outlet 13安培防水單位電插座	-	-	2	2	-	-	-	-	2	2	-	-

Notes :

1. "1, 2,"denotes the quantity of such provision(s) provided in the residential unit.
2. The quantity of the lighting switch shown in the schedule denotes the quantity of switch faceplate.
3. 4/F is omitted.

122a

備註：

1. "1, 2," 表示提供於該住宅單位內的裝置數量。
2. 說明表所顯示的燈掣數量是表示燈掣面板的數量。
3. 不設四樓。

FITTINGS, FINISHES AND APPLIANCES

裝置、裝修物料及設備

SCHEDULE OF MECHANICAL & ELECTRICAL PROVISIONS OF RESIDENTIAL PROPERTIES

住宅物業機電裝置數量說明表

Tower 2
第2座

Location 位置	Description 描述	1/F (1樓)													
		A	B	C	D	E	F	G	H	J	K	L	M	N	P
Main Entrance 大門入口	Door Bell Push Button 門鈴按鈴	1	1	1	1	1	1	1	1	1	1	1	1	1	1
Living Room / Dining Room 客廳/飯廳	Switch for Indoor A/C Unit 室內空調機開關掣	1	2	2	2	2	1	1	1	1	2	1	1	2	1
	13A Twin Socket Outlet 13安培雙位電插座	2	3	3	3	3	3	2	3	3	3	2	3	3	2
	TV / FM Outlet 電視/電台插座	2	2	2	2	2	2	1	1	2	3	2	2	2	2
	Telephone Outlet 電話插座	2	2	2	2	2	2	1	1	2	3	2	2	2	2
	Lighting Switch 燈掣	3	4	4	4	3	3	3	3	3	4	3	4	4	3
	Lighting Point 燈位	3	4	4	4	4	4	3	3	3	4	3	4	4	3
	Door Phone 門口對講機	1	1	1	1	1	1	1	1	1	1	1	1	1	1
	Door Bell 門鈴	1	1	1	1	1	1	1	1	1	1	1	1	1	1
Smoke Detector 煙霧感應器	-	1	1	1	1	-	-	-	-	1	-	-	1	-	
Bedroom 1 睡房 1	Switch for Indoor A/C Unit 室內空調機開關掣	1	1	1	1	1	1	1	1	1	-	1	1	1	1
	13A Twin Socket Outlet 13安培雙位電插座	1	1	1	1	1	1	1	1	1	-	1	1	1	1
	13A Socket Outlet 13安培電插座	-	-	-	-	-	-	-	-	-	-	-	-	-	-
	TV / FM Outlet 電視/電台插座	1	1	1	1	1	1	1	1	1	-	1	1	1	1
	Lighting Switch 燈掣	1	1	1	1	1	1	1	1	1	-	1	1	1	1
	Lighting Point 燈位	1	1	1	1	1	1	1	1	1	-	1	1	1	1

Notes :

- "1, 2,"denotes the quantity of such provision(s) provided in the residential unit.
- The quantity of the lighting switch shown in the schedule denotes the quantity of switch faceplate.
- 4/F is omitted.

備註：

- "1, 2," 表示提供於該住宅單位內的裝置數量。
- 說明表所顯示的燈掣數量是表示燈掣面板的數量。
- 不設四樓。

FITTINGS, FINISHES AND APPLIANCES

裝置、裝修物料及設備

SCHEDULE OF MECHANICAL & ELECTRICAL PROVISIONS OF RESIDENTIAL PROPERTIES

住宅物業機電裝置數量說明表

Tower 2
第2座

Location 位置	Description 描述	1/F (1樓)													
		A	B	C	D	E	F	G	H	J	K	L	M	N	P
Shower Room 淋浴室	Fuse Spur Unit for Thermal Ventilator 浴室寶接線位	1	1	1	1	1	1	1	1	1	1	1	1	1	1
	Thermal Ventilator Remote Control 浴室寶遙控器	1	1	1	1	1	1	1	1	1	1	1	1	1	1
	Power Supply Point for Electric Water Heater 電熱水爐供電位	1	1	1	1	1	1	1	1	1	1	1	1	1	1
	Electric Water Heater Remote Control 電熱水遙控器	1	1	1	1	1	1	1	1	1	1	1	1	1	1
	13A Single Socket Outlet 13安培單位電插座	1	1	1	1	1	1	1	1	1	1	1	1	1	1
	Connection Unit for Light Trough 燈槽接線座	1	1	1	1	1	1	1	1	1	1	1	1	1	1
	Lighting Point 燈位	2	2	2	2	2	2	2	2	2	2	2	2	2	2
	Lighting Switch 燈掣	2	2	2	2	2	2	2	2	2	2	2	2	2	2
	Switch for Thermal Ventilator 浴室寶開關掣	1	1	1	1	1	1	1	1	1	1	1	1	1	1
Open Kitchen 開放式廚房	Lighting Switch 燈掣	2	2	2	2	2	2	2	2	2	2	2	2	2	2
	Lighting Point 燈位	2	2	2	2	2	1	1	2	2	1	2	2	2	2
	13A Twin Socket Outlet 13安培雙位電插座	1	1	1	1	1	1	1	1	1	1	1	1	1	1
	Fuse Spur Unit for Kitchen Cabinet Light 廚櫃燈接線位	1	1	1	1	1	1	1	1	1	1	1	1	1	1
	Fuse Spur Unit Point for Cookerhood 抽油煙機接線位	1	1	1	1	1	1	1	1	1	1	1	1	1	1
	Connection Unit for Induction Cooker Hob 電磁煮食爐接線位	1	1	1	1	1	1	1	1	1	1	1	1	1	1
	Switch for Cooker Hob 電磁煮食爐開關掣	1	1	1	1	1	1	1	1	1	1	1	1	1	1
	Socket Outlet for Microwave Oven 微波爐電插座	1	1	1	1	1	1	1	1	1	1	1	1	1	1
	Socket Outlet for Refrigerator 雪櫃電插座	1	1	1	1	1	1	1	1	1	1	1	1	1	1
	Miniature Circuit Breakers Board 微型總電掣箱	1	1	1	1	1	1	1	1	1	1	1	1	1	1
	Smoke Detector 煙霧感應器	1	1	1	1	1	1	1	1	1	1	1	1	1	1
Sprinkler Head 消防花灑頭 (Under ceiling & in ceiling void 假天花下及假天花內)	2	2	2	2	2	2	2	2	2	2	2	2	2	2	

Notes :

1. "1, 2," denotes the quantity of such provision(s) provided in the residential unit.
2. The quantity of the lighting switch shown in the schedule denotes the quantity of switch faceplate.
3. 4/F is omitted.

備註：

1. "1, 2," 表示提供於該住宅單位內的裝置數量。
2. 說明表所顯示的燈掣數量是表示燈掣面板的數量。
3. 不設四樓。

This page is deliberately left in blank 此版乃特意留白

FITTINGS, FINISHES AND APPLIANCES

裝置、裝修物料及設備

SCHEDULE OF MECHANICAL & ELECTRICAL PROVISIONS OF RESIDENTIAL PROPERTIES

住宅物業機電裝置數量說明表

Tower 2
第2座

Location 位置	Description 描述	1/F (1樓)													
		A	B	C	D	E	F	G	H	J	K	L	M	N	P
Garden (For Units on 1/F Only) 花園 (僅提供於1樓之住宅單位)	Light Fittings 燈位	-	-	-	2	2	2	2	2	-	-	-	-	-	-
	13A Weatherproof Single Socket Outlet 13安培防水單位電插座	-	-	-	2	2	2	2	2	-	-	-	-	-	-
	Lighting Switch 燈掣	-	-	-	1	1	1	1	1	-	-	-	-	-	-
Balcony 露台	Lighting Switch 燈掣	1	1	1	-	-	-	-	-	-	-	1	1	1	1
	Lighting Point 燈位	1	1	1	-	-	-	-	-	-	-	1	1	1	1
Utility Platform 工作平台	Lighting Switch 燈掣	1	1	1	-	-	-	-	1	1	1	-	1	1	1
	Lighting Point 燈位	1	1	1	-	-	-	-	1	1	1	-	1	1	1

Notes :

1. "1, 2,"denotes the quantity of such provision(s) provided in the residential unit.
2. The quantity of the lighting switch shown in the schedule denotes the quantity of switch faceplate.
3. 4/F is omitted.

124a

備註：

1. "1, 2," 表示提供於該住宅單位內的裝置數量。
2. 說明表所顯示的燈掣數量是表示燈掣面板的數量。
3. 不設四樓。

FITTINGS, FINISHES AND APPLIANCES

裝置、裝修物料及設備

SCHEDULE OF MECHANICAL & ELECTRICAL PROVISIONS OF RESIDENTIAL PROPERTIES

住宅物業機電裝置數量說明表

Tower 2
第2座

Location 位置	Description 描述	2/F, 3/F and 5/F (2樓、3樓及5樓)													
		A	B	C	D	E	F	G	H	J	K	L	M	N	P
Main Entrance 大門入口	Door Bell Push Button 門鈴按鈴	1	1	1	1	1	1	1	1	1	1	1	1	1	1
Living Room / Dining Room 客廳/飯廳	Switch for Indoor A/C Unit 室內空調機開關掣	1	2	2	2	2	1	1	1	1	2	1	1	2	1
	13A Twin Socket Outlet 13安培雙位電插座	2	3	3	3	3	3	2	3	3	3	2	3	3	2
	TV / FM Outlet 電視/電台插座	2	2	2	1	2	2	1	1	2	3	2	2	2	2
	Telephone Outlet 電話插座	2	2	2	1	2	2	1	1	2	3	2	2	2	2
	Lighting Switch 燈掣	3	4	4	4	4	3	3	3	3	4	3	3	4	3
	Lighting Point 燈位	3	4	4	4	4	4	3	3	3	4	3	4	4	3
	Door Phone 門口對講機	1	1	1	1	1	1	1	1	1	1	1	1	1	1
	Door Bell 門鈴	1	1	1	1	1	1	1	1	1	1	1	1	1	1
	Smoke Detector 煙霧感應器	-	1	1	1	1	-	-	-	-	1	-	-	1	-
Bedroom 1 睡房 1	Switch for Indoor A/C Unit 室內空調機開關掣	1	1	1	1	1	1	1	1	1	-	1	1	1	1
	13A Twin Socket Outlet 13安培雙位電插座	1	1	1	1	1	1	1	1	1	-	1	1	1	1
	13A Socket Outlet 13安培電插座	-	-	-	-	-	-	-	-	-	-	-	-	-	-
	TV / FM Outlet 電視/電台插座	1	1	1	1	1	1	1	1	1	-	1	1	1	1
	Lighting Switch 燈掣	1	1	1	1	1	1	1	1	1	-	1	1	1	1
	Lighting Point 燈位	1	1	1	1	1	1	1	1	1	-	1	1	1	1

Notes :

- "1, 2,"denotes the quantity of such provision(s) provided in the residential unit.
- The quantity of the lighting switch shown in the schedule denotes the quantity of switch faceplate.
- 4/F is omitted.

備註：

- "1, 2," 表示提供於該住宅單位內的裝置數量。
- 說明表所顯示的燈掣數量是表示燈掣面板的數量。
- 不設四樓。

FITTINGS, FINISHES AND APPLIANCES

裝置、裝修物料及設備

SCHEDULE OF MECHANICAL & ELECTRICAL PROVISIONS OF RESIDENTIAL PROPERTIES

住宅物業機電裝置數量說明表

Tower 2
第2座

Location 位置	Description 描述	2/F, 3/F and 5/F (2樓、3樓及5樓)													
		A	B	C	D	E	F	G	H	J	K	L	M	N	P
Shower Room 淋浴室	Fuse Spur Unit for Thermal Ventilator 浴室寶接線位	1	1	1	1	1	1	1	1	1	1	1	1	1	1
	Thermal Ventilator Remote Control 浴室寶遙控器	1	1	1	1	1	1	1	1	1	1	1	1	1	1
	Power Supply Point for Electric Water Heater 電熱水爐供電位	1	1	1	1	1	1	1	1	1	1	1	1	1	1
	Electric Water Heater Remote Control 電熱水遙控器	1	1	1	1	1	1	1	1	1	1	1	1	1	1
	13A Single Socket Outlet 13安培單位電插座	1	1	1	1	1	1	1	1	1	1	1	1	1	1
	Connection Unit for Light Trough 燈槽接線座	1	1	1	1	1	1	1	1	1	1	1	1	1	1
	Lighting Point 燈位	2	2	2	2	2	2	2	2	2	2	2	2	2	2
	Lighting Switch 燈掣	2	2	2	2	2	2	2	2	2	2	2	2	2	2
	Switch for Thermal Ventilator 浴室寶開關掣	1	1	1	1	1	1	1	1	1	1	1	1	1	1
Open Kitchen 開放式廚房	Lighting Switch 燈掣	2	2	2	2	2	2	2	2	2	2	2	2	2	2
	Lighting Point 燈位	2	2	2	2	2	1	1	2	2	1	1	2	2	2
	13A Twin Socket Outlet 13安培雙位電插座	1	1	1	1	1	1	1	1	1	1	1	1	1	1
	Fuse Spur Unit for Kitchen Cabinet Light 廚櫃燈接線位	1	1	1	1	1	1	1	1	1	1	1	1	1	1
	Fuse Spur Unit Point for Cookerhood 抽油煙機接線位	1	1	1	1	1	1	1	1	1	1	1	1	1	1
	Connection Unit for Induction Cooker Hob 電磁煮食爐接線位	1	1	1	1	1	1	1	1	1	1	1	1	1	1
	Switch for Cooker Hob 電磁煮食爐開關掣	1	1	1	1	1	1	1	1	1	1	1	1	1	1
	Socket Outlet for Microwave Oven 微波爐電插座	1	1	1	1	1	1	1	1	1	1	1	1	1	1
	Socket Outlet for Refrigerator 雪櫃電插座	1	1	1	1	1	1	1	1	1	1	1	1	1	1
	Miniature Circuit Breakers Board 微型總電掣箱	1	1	1	1	1	1	1	1	1	1	1	1	1	1
	Smoke Detector 煙霧感應器	1	1	1	1	1	1	1	1	1	1	1	1	1	1
Sprinkler Head 消防花灑頭 (Under ceiling & in ceiling void 假天花下及假天花內)	2	2	2	2	2	2	2	2	2	2	2	2	2	2	

Notes :

1. "1, 2," denotes the quantity of such provision(s) provided in the residential unit.
2. The quantity of the lighting switch shown in the schedule denotes the quantity of switch faceplate.
3. 4/F is omitted.

備註：

1. "1, 2," 表示提供於該住宅單位內的裝置數量。
2. 說明表所顯示的燈掣數量是表示燈掣面板的數量。
3. 不設四樓。

This page is deliberately left in blank 此版乃特意留白

FITTINGS, FINISHES AND APPLIANCES

裝置、裝修物料及設備

SCHEDULE OF MECHANICAL & ELECTRICAL PROVISIONS OF RESIDENTIAL PROPERTIES

住宅物業機電裝置數量說明表

Tower 2
第2座

Location 位置	Description 描述	2/F, 3/F and 5/F (2樓、3樓及5樓)														
		A	B	C	D	E	F	G	H	J	K	L	M	N	P	
Balcony 露台	Lighting Switch 燈掣	1	1	1	1	1	1	1	1	1	-	-	1	1	1	1
	Lighting Point 燈位	1	1	1	1	1	1	1	1	1	-	-	1	1	1	1
Utility Platform 工作平台	Lighting Switch 燈掣	1	1	1	1	1	1	1	1	1	1	1	-	1	1	1
	Lighting Point 燈位	1	1	1	1	1	1	1	1	1	1	1	-	1	1	1

Notes :

1. "1, 2,"denotes the quantity of such provision(s) provided in the residential unit.
2. The quantity of the lighting switch shown in the schedule denotes the quantity of switch faceplate.
3. 4/F is omitted.

126a

備註：

1. "1, 2," 表示提供於該住宅單位內的裝置數量。
2. 說明表所顯示的燈掣數量是表示燈掣面板的數量。
3. 不設四樓。

FITTINGS, FINISHES AND APPLIANCES

裝置、裝修物料及設備

SCHEDULE OF MECHANICAL & ELECTRICAL PROVISIONS OF RESIDENTIAL PROPERTIES

住宅物業機電裝置數量說明表

Tower 2
第2座

Location 位置	Description 描述	6/F (6樓)													
		A	B	C	D	E	F	G	H	K	L	M	N	P	
Main Entrance 大門入口	Door Bell Push Button 門鈴按鈴	1	1	1	1	1	1	1	1	1	1	1	1	1	
Living Room / Dining Room 客廳/飯廳	Switch for Indoor A/C Unit 室內空調機開關掣	1	2	2	2	2	1	1	2	2	1	1	2	1	
	13A Twin Socket Outlet 13安培雙位電插座	2	3	3	3	3	3	2	2	3	2	3	3	2	
	TV / FM Outlet 電視/電台插座	2	2	2	1	2	2	1	2	3	2	2	2	2	
	Telephone Outlet 電話插座	2	2	2	1	2	2	1	2	3	2	2	2	2	
	Lighting Switch 燈掣	3	3	4	4	3	3	3	3	4	3	4	4	3	
	Lighting Point 燈位	3	3	4	4	3	4	3	4	4	3	4	4	3	
	Door Phone 門口對講機	1	1	1	1	1	1	1	1	1	1	1	1	1	
	Door Bell 門鈴	1	1	1	1	1	1	1	1	1	1	1	1	1	
	Smoke Detector 煙霧感應器	-	-	1	1	-	-	-	1	1	-	-	1	-	
Bedroom 1 睡房 1	Switch for Indoor A/C Unit 室內空調機開關掣	1	1	1	1	1	1	1	1	-	1	1	1	1	
	13A Twin Socket Outlet 13安培雙位電插座	1	1	1	1	1	1	1	2	-	1	1	1	1	
	13A Socket Outlet 13安培電插座	-	-	-	-	-	-	-	-	-	-	-	-	-	
	TV / FM Outlet 電視/電台插座	1	1	1	1	1	1	1	1	-	1	1	1	1	
	Lighting Switch 燈掣	1	1	1	1	1	1	1	1	-	1	1	1	1	
	Lighting Point 燈位	1	1	1	1	1	1	1	1	-	1	1	1	1	
Bedroom 2 睡房 2	Switch for Indoor A/C Unit 室內空調機開關掣	-	-	-	-	-	-	-	1	-	-	-	-	-	
	13A Twin Socket Outlet 13安培雙位電插座	-	-	-	-	-	-	-	1	-	-	-	-	-	
	TV / FM Outlet 電視/電台插座	-	-	-	-	-	-	-	1	-	-	-	-	-	
	Lighting Switch 燈掣	-	-	-	-	-	-	-	1	-	-	-	-	-	
	Lighting Point 燈位	-	-	-	-	-	-	-	1	-	-	-	-	-	

Notes :

- "1, 2,"denotes the quantity of such provision(s) provided in the residential unit.
- The quantity of the lighting switch shown in the schedule denotes the quantity of switch faceplate.
- 4/F is omitted.

備註：

- "1, 2," 表示提供於該住宅單位內的裝置數量。
- 說明表所顯示的燈掣數量是表示燈掣面板的數量。
- 不設四樓。

FITTINGS, FINISHES AND APPLIANCES

裝置、裝修物料及設備

SCHEDULE OF MECHANICAL & ELECTRICAL PROVISIONS OF RESIDENTIAL PROPERTIES

住宅物業機電裝置數量說明表

Tower 2
第2座

Location 位置	Description 描述	6/F (6樓)													
		A	B	C	D	E	F	G	H	K	L	M	N	P	
Shower Room 淋浴室	Fuse Spur Unit for Thermal Ventilator 浴室寶接線位	1	1	1	1	1	1	1	1	1	1	1	1	1	
	Thermal Ventilator Remote Control 浴室寶遙控器	1	1	1	1	1	1	1	1	1	1	1	1	1	
	Power Supply Point for Electric Water Heater 電熱水爐供電位	1	1	1	1	1	1	1	1	1	1	1	1	1	
	Electric Water Heater Remote Control 電熱水遙控器	1	1	1	1	1	1	1	1	1	1	1	1	1	
	13A Single Socket Outlet 13安培單位電插座	1	1	1	1	1	1	1	1	1	1	1	1	1	
	Connection Unit for Light Trough 燈槽接線座	1	1	1	1	1	1	1	1	1	1	1	1	1	
	Lighting Point 燈位	2	2	2	2	2	2	2	2	2	2	2	2	2	
	Lighting Switch 燈掣	2	2	2	2	2	2	2	2	2	2	2	2	2	
	Switch for Thermal Ventilator 浴室寶開關掣	1	1	1	1	1	1	1	1	1	1	1	1	1	
Open Kitchen 開放式廚房	Lighting Switch 燈掣	2	2	2	2	2	2	2	2	2	2	2	2	2	
	Lighting Point 燈位	2	1	2	2	1	1	1	2	1	1	2	2	2	
	13A Twin Socket Outlet 13安培雙位電插座	1	1	1	1	1	1	1	1	1	1	1	1	1	
	Fuse Spur Unit for Kitchen Cabinet Light 廚櫃燈接線位	1	1	1	1	1	1	1	1	1	1	1	1	1	
	Fuse Spur Unit Point for Cookerhood 抽油煙機接線位	1	1	1	1	1	1	1	1	1	1	1	1	1	
	Connection Unit for Induction Cooker Hob 電磁煮食爐接線位	1	1	1	1	1	1	1	1	1	1	1	1	1	
	Switch for Cooker Hob 電磁煮食爐開關掣	1	1	1	1	1	1	1	1	1	1	1	1	1	
	Socket Outlet for Microwave Oven 微波爐電插座	1	1	1	1	1	1	1	1	1	1	1	1	1	
	Socket Outlet for Refrigerator 雪櫃電插座	1	1	1	1	1	1	1	1	1	1	1	1	1	
	Miniature Circuit Breakers Board 微型總電掣箱	1	1	1	1	1	1	1	1	1	1	1	1	1	
	Smoke Detector 煙霧感應器	1	1	1	1	1	1	1	1	1	1	1	1	1	
Sprinkler Head 消防花灑頭 (Under ceiling & in ceiling void 假天花下及假天花內)	2	2	2	2	2	2	2	2	2	2	2	2	2		

Notes :

1. "1, 2," denotes the quantity of such provision(s) provided in the residential unit.
2. The quantity of the lighting switch shown in the schedule denotes the quantity of switch faceplate.
3. 4/F is omitted.

備註 :

1. "1, 2," 表示提供於該住宅單位內的裝置數量。
2. 說明表所顯示的燈掣數量是表示燈掣面板的數量。
3. 不設四樓。

FITTINGS, FINISHES AND APPLIANCES

裝置、裝修物料及設備

SCHEDULE OF MECHANICAL & ELECTRICAL PROVISIONS OF RESIDENTIAL PROPERTIES

住宅物業機電裝置數量說明表

Tower 2
第2座

Location 位置	Description 描述	6/F (6樓)													
		A	B	C	D	E	F	G	H	K	L	M	N	P	
Balcony 露台	Lighting Switch 燈掣	1	1	1	1	1	1	1	1	1	-	1	1	1	1
	Lighting Point 燈位	1	1	1	1	1	1	1	1	1	-	1	1	1	1
Utility Platform 工作平台	Lighting Switch 燈掣	1	1	1	1	1	1	1	1	1	1	-	1	1	1
	Lighting Point 燈位	1	1	1	1	1	1	1	1	1	1	-	1	1	1
Staircase access to MR/F 通往主天台的樓梯	Light Fittings 燈位	-	-	3	3	-	-	-	3	-	-	-	-	-	-
	Lighting Switch 燈掣	-	-	3	3	-	-	-	3	-	-	-	-	-	-
	Smoke Detector 煙霧感應器	-	-	2	2	-	-	-	2	-	-	-	-	-	-
MR/F 主天台	Light Fittings 燈位	-	-	8	8	-	-	-	8	-	-	-	-	-	-
	13A Weatherproof Single Socket Outlet 13安培防水單位電插座	-	-	2	2	-	-	-	2	-	-	-	-	-	-

Notes :

1. "1, 2,"denotes the quantity of such provision(s) provided in the residential unit.
2. The quantity of the lighting switch shown in the schedule denotes the quantity of switch faceplate.
3. 4/F is omitted.

備註：

1. "1, 2," 表示提供於該住宅單位內的裝置數量。
2. 說明表所顯示的燈掣數量是表示燈掣面板的數量。
3. 不設四樓。

FITTINGS, FINISHES AND APPLIANCES

裝置、裝修物料及設備

SCHEDULE OF MECHANICAL & ELECTRICAL PROVISIONS OF RESIDENTIAL PROPERTIES

住宅物業機電裝置數量說明表

Tower 3
第3座

Location 位置	Description 描述	1/F (1樓)													
		A	B	C	D	E	F	G	H	J	K	L	M	N	
Main Entrance 大門入口	Door Bell Push Button 門鈴按鈴	1	1	1	1	1	1	1	1	1	1	1	1	1	
Living Room / Dining Room 客廳/飯廳	Switch for Indoor A/C Unit 室內空調機開關掣	1	2	1	1	1	2	1	1	2	2	2	2	1	
	13A Twin Socket Outlet 13安培雙位電插座	2	3	3	2	3	3	3	2	3	3	3	3	2	
	TV / FM Outlet 電視/電台插座	2	2	2	2	2	2	2	2	2	2	2	2	2	
	Telephone Outlet 電話插座	2	2	2	2	2	2	2	2	2	2	2	2	2	
	Lighting Switch 燈掣	3	4	3	3	3	4	3	3	4	4	4	4	3	
	Lighting Point 燈位	3	4	3	3	3	4	3	4	4	4	4	4	3	
	Door Phone 門口對講機	1	1	1	1	1	1	1	1	1	1	1	1	1	
	Door Bell 門鈴	1	1	1	1	1	1	1	1	1	1	1	1	1	
Smoke Detector 煙霧感應器	-	1	-	-	-	1	-	-	1	1	1	1	-		
Bedroom 1 睡房 1	Switch for Indoor A/C Unit 室內空調機開關掣	1	1	1	1	1	1	1	1	1	1	1	1	1	
	13A Twin Socket Outlet 13安培雙位電插座	1	1	1	1	1	1	1	1	1	1	1	1	1	
	13A Socket Outlet 13安培電插座	-	-	-	1	-	-	-	-	-	-	-	-	-	
	TV / FM Outlet 電視/電台插座	1	1	1	1	1	1	1	1	1	1	1	1	1	
	Lighting Switch 燈掣	1	1	1	1	1	1	1	1	1	1	1	1	1	
	Lighting Point 燈位	1	1	1	1	1	1	1	1	1	1	1	1	1	
Bedroom 2 睡房 2	Switch for Indoor A/C Unit 室內空調機開關掣	-	-	1	-	1	-	-	-	-	-	-	-	-	
	13A Twin Socket Outlet 13安培雙位電插座	-	-	1	-	1	-	-	-	-	-	-	-	-	
	TV / FM Outlet 電視/電台插座	-	-	1	-	1	-	-	-	-	-	-	-	-	
	Lighting Switch 燈掣	-	-	1	-	1	-	-	-	-	-	-	-	-	
	Lighting Point 燈位	-	-	1	-	1	-	-	-	-	-	-	-	-	

Notes :

1. "1, 2," denotes the quantity of such provision(s) provided in the residential unit.
2. The quantity of the lighting switch shown in the schedule denotes the quantity of switch faceplate.
3. 4/F is omitted.

備註：

1. "1, 2," 表示提供於該住宅單位內的裝置數量。
2. 說明表所顯示的燈掣數量是表示燈掣面板的數量。
3. 不設四樓。

FITTINGS, FINISHES AND APPLIANCES

裝置、裝修物料及設備

SCHEDULE OF MECHANICAL & ELECTRICAL PROVISIONS OF RESIDENTIAL PROPERTIES

住宅物業機電裝置數量說明表

Tower 3
第3座

Location 位置	Description 描述	1/F (1樓)													
		A	B	C	D	E	F	G	H	J	K	L	M	N	
Shower Room 淋浴室	Fuse Spur Unit for Thermal Ventilator 浴室寶接線位	1	1	1	1	1	1	1	1	1	1	1	1	1	
	Thermal Ventilator Remote Control 浴室寶遙控器	1	1	1	1	1	1	1	1	1	1	1	1	1	
	Power Supply Point for Electric Water Heater 電熱水爐供電位	1	1	1	1	1	1	1	1	1	1	1	1	1	
	Electric Water Heater Remote Control 電熱水遙控器	1	1	1	1	1	1	1	1	1	1	1	1	1	
	13A Single Socket Outlet 13安培單位電插座	1	1	1	1	1	1	1	1	1	1	1	1	1	
	Connection Unit for Light Trough 燈槽接線座	1	1	1	1	1	1	1	1	1	1	1	1	1	
	Lighting Point 燈位	2	2	2	2	2	2	2	2	2	2	2	2	2	
	Lighting Switch 燈掣	2	2	2	2	2	2	2	2	2	2	2	2	2	
	Switch for Thermal Ventilator 浴室寶開關掣	1	1	1	1	1	1	1	1	1	1	1	1	1	
Open Kitchen 開放式廚房	Lighting Switch 燈掣	2	2	2	2	2	2	2	2	2	2	2	2	2	
	Lighting Point 燈位	2	2	2	1	2	2	3	1	2	2	2	2	2	
	13A Twin Socket Outlet 13安培雙位電插座	1	1	1	1	1	1	1	1	1	1	1	1	1	
	Fuse Spur Unit for Kitchen Cabinet Light 廚櫃燈接線位	1	1	1	1	1	1	1	1	1	1	1	1	1	
	Fuse Spur Unit Point for Cookerhood 抽油煙機接線位	1	1	1	1	1	1	1	1	1	1	1	1	1	
	Connection Unit for Induction Cooker Hob 電磁煮食爐接線位	1	1	1	1	1	1	1	1	1	1	1	1	1	
	Switch for Cooker Hob 電磁煮食爐開關掣	1	1	1	1	1	1	1	1	1	1	1	1	1	
	Socket Outlet for Microwave Oven 微波爐電插座	1	1	1	1	1	1	1	1	1	1	1	1	1	
	Socket Outlet for Refrigerator 雪櫃電插座	1	1	1	1	1	1	1	1	1	1	1	1	1	
	Miniature Circuit Breakers Board 微型總電掣箱	1	1	1	1	1	1	1	1	1	1	1	1	1	
	Smoke Detector 煙霧感應器	1	1	1	1	1	1	1	1	1	1	1	1	1	
Sprinkler Head 消防花灑頭 (Under ceiling & in ceiling void 假天花下及假天花內)	2	2	2	2	2	2	2	2	2	2	2	2	2		

Notes :

- "1, 2,"denotes the quantity of such provision(s) provided in the residential unit.
- The quantity of the lighting switch shown in the schedule denotes the quantity of switch faceplate.
- 4/F is omitted.

備註：

- "1, 2," 表示提供於該住宅單位內的裝置數量。
- 說明表所顯示的燈掣數量是表示燈掣面板的數量。
- 不設四樓。



This page is deliberately left in blank 此版乃特意留白

FITTINGS, FINISHES AND APPLIANCES

裝置、裝修物料及設備

SCHEDULE OF MECHANICAL & ELECTRICAL PROVISIONS OF RESIDENTIAL PROPERTIES

住宅物業機電裝置數量說明表

Tower 3
第3座

Location 位置	Description 描述	1/F (1樓)													
		A	B	C	D	E	F	G	H	J	K	L	M	N	
Garden (For Units on 1/F Only) 花園 (僅提供於1樓之住宅單位)	Light Fittings 燈位	-	-	-	-	3	2	2	2	2	2	-	-	-	
	13A Weatherproof Single Socket Outlet 13安培防水單位電插座	-	-	-	-	2	2	2	2	2	2	-	-	-	
	Lighting Switch 燈掣	-	-	-	-	1	1	1	1	1	1	-	-	-	
Balcony 露台	Lighting Switch 燈掣	1	1	-	-	-	-	-	-	-	-	1	1	1	
	Lighting Point 燈位	1	1	-	-	-	-	-	-	-	-	1	1	1	
Utility Platform 工作平台	Lighting Switch 燈掣	1	1	1	-	-	-	-	-	-	-	1	1	1	
	Lighting Point 燈位	1	1	1	-	-	-	-	-	-	-	1	1	1	
Flat Roof 平台	Lighting Switch 燈掣	-	-	1	1	1	-	-	-	-	-	-	-	-	
	Lighting Point 燈位	-	-	1	1	1	-	-	-	-	-	-	-	-	

Notes :

1. "1, 2,"denotes the quantity of such provision(s) provided in the residential unit.
2. The quantity of the lighting switch shown in the schedule denotes the quantity of switch faceplate.
3. 4/F is omitted.

備註：

1. "1, 2," 表示提供於該住宅單位內的裝置數量。
2. 說明表所顯示的燈掣數量是表示燈掣面板的數量。
3. 不設四樓。

FITTINGS, FINISHES AND APPLIANCES

裝置、裝修物料及設備

SCHEDULE OF MECHANICAL & ELECTRICAL PROVISIONS OF RESIDENTIAL PROPERTIES

住宅物業機電裝置數量說明表

Tower 3
第3座

Location 位置	Description 描述	2/F, 3/F & 5/F (2樓、3樓及5樓)													
		A	B	C	D	E	F	G	H	J	K	L	M	N	
Main Entrance 大門入口	Door Bell Push Button 門鈴按鈴	1	1	1	1	1	1	1	1	1	1	1	1	1	
Living Room / Dining Room 客廳/飯廳	Switch for Indoor A/C Unit 室內空調機開關掣	1	2	1	1	1	2	1	1	2	2	2	2	1	
	13A Twin Socket Outlet 13安培雙位電插座	2	3	3	2	3	3	3	2	3	3	3	3	2	
	TV / FM Outlet 電視/電台插座	2	2	2	2	2	2	2	2	2	1	1	2	2	
	Telephone Outlet 電話插座	2	2	2	2	2	2	2	2	2	1	1	2	2	
	Lighting Switch 燈掣	3	4	3	3	3	4	3	3	4	4	4	4	3	
	Lighting Point 燈位	3	4	3	3	3	4	3	4	4	4	4	4	3	
	Door Phone 門口對講機	1	1	1	1	1	1	1	1	1	1	1	1	1	
	Door Bell 門鈴	1	1	1	1	1	1	1	1	1	1	1	1	1	
Smoke Detector 煙霧感應器	-	1	-	-	-	1	-	-	1	1	1	1	-		
Bedroom 1 睡房 1	Switch for Indoor A/C Unit 室內空調機開關掣	1	1	1	1	1	1	1	1	1	1	1	1	1	
	13A Twin Socket Outlet 13安培雙位電插座	1	1	1	1	1	1	1	1	1	1	1	1	1	
	13A Socket Outlet 13安培電插座	-	-	-	1	-	-	-	-	-	-	-	-	-	
	TV / FM Outlet 電視/電台插座	1	1	1	1	1	1	1	1	1	1	1	1	1	
	Lighting Switch 燈掣	1	1	1	1	1	1	1	1	1	1	1	1	1	
	Lighting Point 燈位	1	1	1	1	1	1	1	1	1	1	1	1	1	
Bedroom 2 睡房 2	Switch for Indoor A/C Unit 室內空調機開關掣	-	-	1	-	1	-	-	-	-	-	-	-	-	
	13A Twin Socket Outlet 13安培雙位電插座	-	-	1	-	1	-	-	-	-	-	-	-	-	
	TV / FM Outlet 電視/電台插座	-	-	1	-	1	-	-	-	-	-	-	-	-	
	Lighting Switch 燈掣	-	-	1	-	1	-	-	-	-	-	-	-	-	
	Lighting Point 燈位	-	-	1	-	1	-	-	-	-	-	-	-	-	

Notes :

1. "1, 2,"denotes the quantity of such provision(s) provided in the residential unit.
2. The quantity of the lighting switch shown in the schedule denotes the quantity of switch faceplate.
3. 4/F is omitted.

備註：

1. "1, 2," 表示提供於該住宅單位內的裝置數量。
2. 說明表所顯示的燈掣數量是表示燈掣面板的數量。
3. 不設四樓。

FITTINGS, FINISHES AND APPLIANCES

裝置、裝修物料及設備

SCHEDULE OF MECHANICAL & ELECTRICAL PROVISIONS OF RESIDENTIAL PROPERTIES

住宅物業機電裝置數量說明表

Tower 3
第3座

Location 位置	Description 描述	2/F, 3/F & 5/F (2樓、3樓及5樓)													
		A	B	C	D	E	F	G	H	J	K	L	M	N	
Shower Room 淋浴室	Fuse Spur Unit for Thermal Ventilator 浴室寶接線位	1	1	1	1	1	1	1	1	1	1	1	1	1	
	Thermal Ventilator Remote Control 浴室寶遙控器	1	1	1	1	1	1	1	1	1	1	1	1	1	
	Power Supply Point for Electric Water Heater 電熱水爐供電位	1	1	1	1	1	1	1	1	1	1	1	1	1	
	Electric Water Heater Remote Control 電熱水遙控器	1	1	1	1	1	1	1	1	1	1	1	1	1	
	13A Single Socket Outlet 13安培單位電插座	1	1	1	1	1	1	1	1	1	1	1	1	1	
	Connection Unit for Light Trough 燈槽接線座	1	1	1	1	1	1	1	1	1	1	1	1	1	
	Lighting Point 燈位	2	2	2	2	2	2	2	2	2	2	2	2	2	
	Lighting Switch 燈掣	2	2	2	2	2	2	2	2	2	2	2	2	2	
	Switch for Thermal Ventilator 浴室寶開關掣	1	1	1	1	1	1	1	1	1	1	1	1	1	
Open Kitchen 開放式廚房	Lighting Switch 燈掣	2	2	2	2	2	2	2	2	2	2	2	2	2	
	Lighting Point 燈位	2	2	2	1	2	2	3	1	2	2	2	2	2	
	13A Twin Socket Outlet 13安培雙位電插座	1	1	1	1	1	1	1	1	1	1	1	1	1	
	Fuse Spur Unit for Kitchen Cabinet Light 廚櫃燈接線位	1	1	1	1	1	1	1	1	1	1	1	1	1	
	Fuse Spur Unit Point for Cookerhood 抽油煙機接線位	1	1	1	1	1	1	1	1	1	1	1	1	1	
	Connection Unit for Induction Cooker Hob 電磁煮食爐接線位	1	1	1	1	1	1	1	1	1	1	1	1	1	
	Switch for Cooker Hob 電磁煮食爐開關掣	1	1	1	1	1	1	1	1	1	1	1	1	1	
	Socket Outlet for Microwave Oven 微波爐電插座	1	1	1	1	1	1	1	1	1	1	1	1	1	
	Socket Outlet for Refrigerator 雪櫃電插座	1	1	1	1	1	1	1	1	1	1	1	1	1	
	Miniature Circuit Breakers Board 微型總電掣箱	1	1	1	1	1	1	1	1	1	1	1	1	1	
	Smoke Detector 煙霧感應器	1	1	1	1	1	1	1	1	1	1	1	1	1	
	Sprinkler Head 消防花灑頭 (Under ceiling & in ceiling void 假天花下及假天花內)	2	2	2	2	2	2	2	2	2	2	2	2	2	

Notes :

- "1, 2,"denotes the quantity of such provision(s) provided in the residential unit.
- The quantity of the lighting switch shown in the schedule denotes the quantity of switch faceplate.
- 3.4/F is omitted.

備註：

- "1, 2," 表示提供於該住宅單位內的裝置數量。
- 說明表所顯示的燈掣數量是表示燈掣面板的數量。
- 不設四樓。



This page is deliberately left in blank 此版乃特意留白

FITTINGS, FINISHES AND APPLIANCES

裝置、裝修物料及設備

SCHEDULE OF MECHANICAL & ELECTRICAL PROVISIONS OF RESIDENTIAL PROPERTIES

住宅物業機電裝置數量說明表

Tower 3
第3座

Location 位置	Description 描述	2/F, 3/F & 5/F (2樓、3樓及5樓)												
		A	B	C	D	E	F	G	H	J	K	L	M	N
Balcony 露台	Lighting Switch 燈掣	1	1	1	1	1	1	1	1	1	1	1	1	1
	Lighting Point 燈位	1	1	1	1	1	1	1	1	1	1	1	1	1
Utility Platform 工作平台	Lighting Switch 燈掣	1	1	1	1	1	1	1	1	1	1	1	1	1
	Lighting Point 燈位	1	1	1	1	1	1	1	1	1	1	1	1	1

Notes :

1. "1, 2,"denotes the quantity of such provision(s) provided in the residential unit.
2. The quantity of the lighting switch shown in the schedule denotes the quantity of switch faceplate.
3. 4/F is omitted.

備註：

1. "1, 2," 表示提供於該住宅單位內的裝置數量。
2. 說明表所顯示的燈掣數量是表示燈掣面板的數量。
3. 不設四樓。

FITTINGS, FINISHES AND APPLIANCES

裝置、裝修物料及設備

SCHEDULE OF MECHANICAL & ELECTRICAL PROVISIONS OF RESIDENTIAL PROPERTIES

住宅物業機電裝置數量說明表

Tower 3
第3座

Location 位置	Description 描述	6/F (6樓)											
		A	B	C	D	F	G	H	J	K	L	M	N
Main Entrance 大門入口	Door Bell Push Button 門鈴按鈴	1	1	1	1	1	1	1	1	1	1	1	1
Living Room / Dining Room 客廳/飯廳	Switch for Indoor A/C Unit 室內空調機開關掣	1	2	1	1	2	1	1	2	2	2	2	1
	13A Twin Socket Outlet 13安培雙位電插座	2	3	2	2	3	3	2	3	3	3	3	2
	TV / FM Outlet 電視/電台插座	2	2	2	2	2	2	2	2	1	2	2	2
	Telephone Outlet 電話插座	2	2	2	2	2	2	2	2	1	2	2	2
	Lighting Switch 燈掣	3	4	4	4	4	3	3	3	4	4	3	3
	Lighting Point 燈位	3	4	4	4	4	3	4	3	4	4	3	3
	Door Phone 門口對講機	1	1	1	1	1	1	1	1	1	1	1	1
	Door Bell 門鈴	1	1	1	1	1	1	1	1	1	1	1	1
Smoke Detector 煙霧感應器	-	1	2	2	1	-	-	-	1	1	-	-	
Bedroom 1 睡房 1	Switch for Indoor A/C Unit 室內空調機開關掣	1	1	1	1	1	1	1	1	1	1	1	1
	13A Twin Socket Outlet 13安培雙位電插座	1	1	1	1	1	1	1	1	1	1	1	1
	13A Socket Outlet 13安培電插座	-	-	-	-	-	-	-	-	-	-	-	-
	TV / FM Outlet 電視/電台插座	1	1	1	1	1	1	1	1	1	1	1	1
	Lighting Switch 燈掣	1	1	1	1	1	1	1	1	1	1	1	1
	Lighting Point 燈位	1	1	1	1	1	1	1	1	1	1	1	1
Bedroom 2 睡房 2	Switch for Indoor A/C Unit 室內空調機開關掣	-	-	1	1	-	-	-	-	-	-	-	-
	13A Twin Socket Outlet 13安培雙位電插座	-	-	1	1	-	-	-	-	-	-	-	-
	TV / FM Outlet 電視/電台插座	-	-	1	1	-	-	-	-	-	-	-	-
	Lighting Switch 燈掣	-	-	1	1	-	-	-	-	-	-	-	-
	Lighting Point 燈位	-	-	1	1	-	-	-	-	-	-	-	-

Notes :

1. "1, 2," denotes the quantity of such provision(s) provided in the residential unit.
2. The quantity of the lighting switch shown in the schedule denotes the quantity of switch faceplate.
3. 4/F is omitted.

備註：

1. "1, 2," 表示提供於該住宅單位內的裝置數量。
2. 說明表所顯示的燈掣數量是表示燈掣面板的數量。
3. 不設四樓。

FITTINGS, FINISHES AND APPLIANCES

裝置、裝修物料及設備

SCHEDULE OF MECHANICAL & ELECTRICAL PROVISIONS OF RESIDENTIAL PROPERTIES

住宅物業機電裝置數量說明表

Tower 3
第3座

Location 位置	Description 描述	6/F (6樓)											
		A	B	C	D	F	G	H	J	K	L	M	N
Shower Room 淋浴室	Fuse Spur Unit for Thermal Ventilator 浴室寶接線位	1	1	1	1	1	1	1	1	1	1	1	1
	Thermal Ventilator Remote Control 浴室寶遙控器	1	1	1	1	1	1	1	1	1	1	1	1
	Power Supply Point for Electric Water Heater 電熱水爐供電位	1	1	1	1	1	1	1	1	1	1	1	1
	Electric Water Heater Remote Control 電熱水遙控器	1	1	1	1	1	1	1	1	1	1	1	1
	13A Single Socket Outlet 13安培單位電插座	1	1	1	1	1	1	1	1	1	1	1	1
	Connection Unit for Light Trough 燈槽接線座	1	1	1	1	1	1	1	1	1	1	1	1
	Lighting Point 燈位	2	2	2	2	2	2	2	2	2	2	2	2
	Lighting Switch 燈掣	2	2	2	2	2	2	2	2	2	2	2	2
	Switch for Thermal Ventilator 浴室寶開關掣	1	1	1	1	1	1	1	1	1	1	1	1
Bathroom 浴室	Fuse Spur Unit for Thermal Ventilator 浴室寶接線位	-	-	1	1	-	-	-	-	-	-	-	-
	Thermal Ventilator Remote Control 浴室寶遙控器	-	-	1	1	-	-	-	-	-	-	-	-
	Connection Unit for Electric Water Heater 電熱水爐接線位	-	-	1	1	-	-	-	-	-	-	-	-
	Electric Water Heater Remote Control 電熱水遙控器	-	-	1	1	-	-	-	-	-	-	-	-
	13A Single Socket Outlet 13安培單位電插座	-	-	1	1	-	-	-	-	-	-	-	-
	Connection Unit for Light Trough 燈槽接線座	-	-	1	1	-	-	-	-	-	-	-	-
	Lighting Point 燈位	-	-	2	2	-	-	-	-	-	-	-	-
	Lighting Switch 燈掣	-	-	2	2	-	-	-	-	-	-	-	-
Switch for Thermal Ventilator 浴室寶開關掣	-	-	1	1	-	-	-	-	-	-	-	-	

Notes :

- "1, 2,"denotes the quantity of such provision(s) provided in the residential unit.
- The quantity of the lighting switch shown in the schedule denotes the quantity of switch faceplate.
- 4/F is omitted.

備註：

- "1, 2," 表示提供於該住宅單位內的裝置數量。
- 說明表所顯示的燈掣數量是表示燈掣面板的數量。
- 不設四樓。

FITTINGS, FINISHES AND APPLIANCES

裝置、裝修物料及設備

SCHEDULE OF MECHANICAL & ELECTRICAL PROVISIONS OF RESIDENTIAL PROPERTIES

住宅物業機電裝置數量說明表

Tower 3
第3座

Location 位置	Description 描述	6/F (6樓)											
		A	B	C	D	F	G	H	J	K	L	M	N
Open Kitchen 開放式廚房	Lighting Switch 燈掣	2	2	2	2	2	2	2	2	2	2	2	2
	Lighting Point 燈位	2	2	2	2	2	3	1	1	2	2	1	2
	13A Twin Socket Outlet 13安培雙位電插座	1	1	1	1	1	1	1	1	1	1	1	1
	Fuse Spur Unit for Kitchen Cabinet Light 廚櫃燈接線位	1	1	1	1	1	1	1	1	1	1	1	1
	Fuse Spur Unit Point for Cookerhood 抽油煙機接線位	1	1	1	1	1	1	1	1	1	1	1	1
	Connection Unit for Induction Cooker Hob 電磁煮食爐接線位	1	1	1	1	1	1	1	1	1	1	1	1
	Switch for Cooker Hob 電磁煮食爐開關掣	1	1	1	1	1	1	1	1	1	1	1	1
	Socket Outlet for Microwave Oven 微波爐電插座	1	1	1	1	1	1	1	1	1	1	1	1
	Socket Outlet for Refrigerator 雪櫃電插座	1	1	1	1	1	1	1	1	1	1	1	1
	Connection Unit for Oven 焗爐接線位	-	-	1	1	-	-	-	-	-	-	-	-
	Miniature Circuit Breakers Board 微型總電掣箱	1	1	1	1	1	1	1	1	1	1	1	1
	Smoke Detector 煙霧感應器	1	1	1	1	1	1	1	1	1	1	1	1
Sprinkler Head 消防花灑頭 (Under ceiling & in ceiling void 假天花下及假天花內)	2	2	2	2	2	2	2	2	2	2	2	2	
Balcony 露台	Lighting Switch 燈掣	1	1	-	-	1	1	1	1	1	1	1	1
	Lighting Point 燈位	1	1	-	-	1	1	1	1	1	1	1	1
Utility Platform 工作平台	Lighting Switch 燈掣	1	1	-	1	1	1	1	1	1	1	1	1
	Lighting Point 燈位	1	1	-	1	1	1	1	1	1	1	1	1
Flat Roof 平台	Lighting Switch 燈掣	-	-	2	1	-	-	-	-	-	-	-	-
	Lighting Point 燈位	-	-	2	1	-	-	-	-	-	-	-	-

Notes :

1. "1, 2," denotes the quantity of such provision(s) provided in the residential unit.
2. The quantity of the lighting switch shown in the schedule denotes the quantity of switch faceplate.
3. 4/F is omitted.

備註 :

1. "1, 2," 表示提供於該住宅單位內的裝置數量。
2. 說明表所顯示的燈掣數量是表示燈掣面板的數量。
3. 不設四樓。

This page is deliberately left in blank 此版乃特意留白

FITTINGS, FINISHES AND APPLIANCES

裝置、裝修物料及設備

SCHEDULE OF MECHANICAL & ELECTRICAL PROVISIONS OF RESIDENTIAL PROPERTIES

住宅物業機電裝置數量說明表

Tower 3
第3座

Location 位置	Description 描述	6/F (6樓)											
		A	B	C	D	F	G	H	J	K	L	M	N
Staircase access to MR/F 通往主天台的樓梯	Light Fittings 燈位	-	-	3	3	-	-	-	-	3	3	-	-
	Lighting Switch 燈掣	-	-	3	3	-	-	-	-	3	3	-	-
	Smoke Detector 煙霧感應器	-	-	1	1	-	-	-	-	1	1	-	-
MR/F 主天台	Light Fittings 燈位	-	-	8	8	-	-	-	-	8	8	-	-
	13A Weatherproof Single Socket Outlet 13安培防水單位電插座	-	-	2	2	-	-	-	-	2	2	-	-

Notes :

1. "1, 2,"denotes the quantity of such provision(s) provided in the residential unit.
2. The quantity of the lighting switch shown in the schedule denotes the quantity of switch faceplate.
3. 4/F is omitted.

136a

備註：

1. "1, 2," 表示提供於該住宅單位內的裝置數量。
2. 說明表所顯示的燈掣數量是表示燈掣面板的數量。
3. 不設四樓。

FITTINGS, FINISHES AND APPLIANCES

裝置、裝修物料及設備

SCHEDULE OF MECHANICAL & ELECTRICAL PROVISIONS OF RESIDENTIAL PROPERTIES

住宅物業機電裝置數量說明表

Tower 5
第5座

Location 位置	Description 描述	1/F (1樓)													
		A	B	C	D	E	F	G	H	J	K	L	M	N	
Main Entrance 大門入口	Door Bell Push Button 門鈴按鈴	1	1	1	1	1	1	1	1	1	1	1	1	1	
Living Room / Dining Room 客廳/飯廳	Switch for Indoor A/C Unit 室內空調機開關掣	1	2	2	2	2	1	1	1	1	1	1	1	1	
	13A Twin Socket Outlet 13安培雙位電插座	2	3	3	3	3	3	2	3	3	3	2	3	2	
	TV / FM Outlet 電視/電台插座	2	2	2	2	2	2	1	1	2	2	1	2	2	
	Telephone Outlet 電話插座	2	2	2	2	2	2	1	1	2	2	1	2	2	
	Lighting Switch 燈掣	3	4	4	4	4	3	3	3	3	3	3	4	3	
	Lighting Point 燈位	3	4	4	4	4	4	3	3	3	3	3	4	3	
	Door Phone 門口對講機	1	1	1	1	1	1	1	1	1	1	1	1	1	
	Door Bell 門鈴	1	1	1	1	1	1	1	1	1	1	1	1	1	
	Smoke Detector 煙霧感應器	-	1	1	1	1	-	-	-	-	-	-	1	-	
Bedroom 1 睡房 1	Switch for Indoor A/C Unit 室內空調機開關掣	1	1	1	1	1	1	1	1	1	1	1	1	1	
	13A Twin Socket Outlet 13安培雙位電插座	1	1	1	1	1	1	1	1	1	1	1	1	1	
	13A Socket Outlet 13安培電插座	-	-	-	-	-	-	-	-	-	-	-	-	-	
	TV / FM Outlet 電視/電台插座	1	1	1	1	1	1	1	1	1	1	1	1	1	
	Lighting Switch 燈掣	1	1	1	1	1	1	1	1	1	1	1	1	1	
	Lighting Point 燈位	1	1	1	1	1	1	1	1	1	1	1	1	1	
Bedroom 2 睡房 2	Switch for Indoor A/C Unit 室內空調機開關掣	-	-	-	-	-	-	-	-	-	-	-	1	-	
	13A Twin Socket Outlet 13安培雙位電插座	-	-	-	-	-	-	-	-	-	-	-	1	-	
	TV / FM Outlet 電視/電台插座	-	-	-	-	-	-	-	-	-	-	-	1	-	
	Lighting Switch 燈掣	-	-	-	-	-	-	-	-	-	-	-	1	-	
	Lighting Point 燈位	-	-	-	-	-	-	-	-	-	-	-	1	-	

Notes :

- "1, 2,"denotes the quantity of such provision(s) provided in the residential unit.
- The quantity of the lighting switch shown in the schedule denotes the quantity of switch faceplate.
- 4/F is omitted.

備註：

- "1, 2," 表示提供於該住宅單位內的裝置數量。
- 說明表所顯示的燈掣數量是表示燈掣面板的數量。
- 不設四樓。

FITTINGS, FINISHES AND APPLIANCES

裝置、裝修物料及設備

SCHEDULE OF MECHANICAL & ELECTRICAL PROVISIONS OF RESIDENTIAL PROPERTIES

住宅物業機電裝置數量說明表

Tower 5
第5座

Location 位置	Description 描述	1/F (1樓)													
		A	B	C	D	E	F	G	H	J	K	L	M	N	
Shower Room 淋浴室	Fuse Spur Unit for Thermal Ventilator 浴室寶接線位	1	1	1	1	1	1	1	1	1	1	1	1	1	
	Thermal Ventilator Remote Control 浴室寶遙控器	1	1	1	1	1	1	1	1	1	1	1	1	1	
	Power Supply Point for Electric Water Heater 電熱水爐供電位	1	1	1	1	1	1	1	1	1	1	1	1	1	
	Electric Water Heater Remote Control 電熱水遙控器	1	1	1	1	1	1	1	1	1	1	1	1	1	
	13A Single Socket Outlet 13安培單位電插座	1	1	1	1	1	1	1	1	1	1	1	1	1	
	Connection Unit for Light Trough 燈槽接線座	1	1	1	1	1	1	1	1	1	1	1	1	1	
	Lighting Point 燈位	2	2	2	2	2	2	2	2	2	2	2	2	2	
	Lighting Switch 燈掣	2	2	2	2	2	2	2	2	2	2	2	2	2	
	Switch for Thermal Ventilator 浴室寶開關掣	1	1	1	1	1	1	1	1	1	1	1	1	1	
Open Kitchen 開放式廚房	Lighting Switch 燈掣	2	2	2	2	2	2	2	2	2	2	2	2	2	
	Lighting Point 燈位	2	2	2	2	2	1	1	2	2	1	2	2	2	
	13A Twin Socket Outlet 13安培雙位電插座	1	1	1	1	1	1	1	1	1	1	1	1	1	
	Fuse Spur Unit for Kitchen Cabinet Light 廚櫃燈接線位	1	1	1	1	1	1	1	1	1	1	1	1	1	
	Fuse Spur Unit Point for Cookerhood 抽油煙機接線位	1	1	1	1	1	1	1	1	1	1	1	1	1	
	Connection Unit for Induction Cooker Hob 電磁煮食爐接線位	1	1	1	1	1	1	1	1	1	1	1	1	1	
	Switch for Cooker Hob 電磁煮食爐開關掣	1	1	1	1	1	1	1	1	1	1	1	1	1	
	Socket Outlet for Microwave Oven 微波爐電插座	1	1	1	1	1	1	1	1	1	1	1	1	1	
	Socket Outlet for Refrigerator 雪櫃電插座	1	1	1	1	1	1	1	1	1	1	1	1	1	
	Miniature Circuit Breakers Board 微型總電掣箱	1	1	1	1	1	1	1	1	1	1	1	1	1	
	Smoke Detector 煙霧感應器	1	1	1	1	1	1	1	1	1	1	1	1	1	
Sprinkler Head 消防花灑頭 (Under ceiling & in ceiling void 假天花下及假天花內)	2	2	2	2	2	2	2	2	2	2	2	2	2		

Notes :

1. "1, 2," denotes the quantity of such provision(s) provided in the residential unit.
2. The quantity of the lighting switch shown in the schedule denotes the quantity of switch faceplate.
3. 4/F is omitted.

備註 :

1. "1, 2," 表示提供於該住宅單位內的裝置數量。
2. 說明表所顯示的燈掣數量是表示燈掣面板的數量。
3. 不設四樓。

This page is deliberately left in blank 此版乃特意留白

FITTINGS, FINISHES AND APPLIANCES

裝置、裝修物料及設備

SCHEDULE OF MECHANICAL & ELECTRICAL PROVISIONS OF RESIDENTIAL PROPERTIES

住宅物業機電裝置數量說明表

Tower 5
第5座

Location 位置	Description 描述	1/F (1樓)													
		A	B	C	D	E	F	G	H	J	K	L	M	N	
Garden (For Units on 1/F Only) 花園 (僅提供於1樓之住宅單位)	Light Fittings 燈位	-	-	-	-	2	2	2	2	2	2	-	-	-	
	13A Weatherproof Single Socket Outlet 13安培防水單位電插座	-	-	-	-	2	2	2	2	2	2	-	-	-	
	Lighting Switch 燈掣	-	-	-	-	1	1	1	1	1	1	-	-	-	
Balcony 露台	Lighting Switch 燈掣	1	1	1	-	-	-	-	-	1	1	1	1	1	
	Lighting Point 燈位	1	1	1	-	-	-	-	-	1	1	1	1	1	
Utility Platform 工作平台	Lighting Switch 燈掣	1	1	1	-	-	-	-	1	-	-	1	1	1	
	Lighting Point 燈位	1	1	1	-	-	-	-	1	-	-	1	1	1	

Notes :

1. "1, 2," denotes the quantity of such provision(s) provided in the residential unit.
2. The quantity of the lighting switch shown in the schedule denotes the quantity of switch faceplate.
3. 4/F is omitted.

138a

備註：

1. "1, 2," 表示提供於該住宅單位內的裝置數量。
2. 說明表所顯示的燈掣數量是表示燈掣面板的數量。
3. 不設四樓。

FITTINGS, FINISHES AND APPLIANCES

裝置、裝修物料及設備

SCHEDULE OF MECHANICAL & ELECTRICAL PROVISIONS OF RESIDENTIAL PROPERTIES

住宅物業機電裝置數量說明表

Tower 5
第5座

Location 位置	Description 描述	2/F, 3/F & 5/F (2樓、3樓及5樓)													
		A	B	C	D	E	F	G	H	J	K	L	M	N	
Main Entrance 大門入口	Door Bell Push Button 門鈴按鈴	1	1	1	1	1	1	1	1	1	1	1	1	1	
Living Room / Dining Room 客廳/飯廳	Switch for Indoor A/C Unit 室內空調機開關掣	1	2	2	2	2	1	1	1	1	1	1	1	1	
	13A Twin Socket Outlet 13安培雙位電插座	2	3	3	3	3	3	2	3	3	3	2	3	2	
	TV / FM Outlet 電視/電台插座	2	2	2	1	2	2	1	1	2	2	1	2	2	
	Telephone Outlet 電話插座	2	2	2	1	2	2	1	1	2	2	1	2	2	
	Lighting Switch 燈掣	3	4	4	4	4	3	3	3	3	3	3	4	3	
	Lighting Point 燈位	3	4	4	4	4	4	3	3	3	3	3	4	3	
	Door Phone 門口對講機	1	1	1	1	1	1	1	1	1	1	1	1	1	
	Door Bell 門鈴	1	1	1	1	1	1	1	1	1	1	1	1	1	
	Smoke Dctector 煙霧感應器	-	1	1	1	1	-	-	-	-	-	-	1	-	
Bedroom 1 睡房 1	Switch for Indoor A/C Unit 室內空調機開關掣	1	1	1	1	1	1	1	1	1	1	1	1	1	
	13A Twin Socket Outlet 13安培雙位電插座	1	1	1	1	1	1	1	1	1	1	1	1	1	
	13A Socket Outlet 13安培電插座	-	-	-	-	-	-	-	-	-	-	-	-	-	
	TV / FM Outlet 電視/電台插座	1	1	1	1	1	1	1	1	1	1	1	1	1	
	Lighting Switch 燈掣	1	1	1	1	1	1	1	1	1	1	1	1	1	
	Lighting Point 燈位	1	1	1	1	1	1	1	1	1	1	1	1	1	
Bedroom 2 睡房 2	Switch for Indoor A/C Unit 室內空調機開關掣	-	-	-	-	-	-	-	-	-	-	-	1	-	
	13A Twin Socket Outlet 13安培雙位電插座	-	-	-	-	-	-	-	-	-	-	-	1	-	
	TV / FM Outlet 電視/電台插座	-	-	-	-	-	-	-	-	-	-	-	1	-	
	Lighting Switch 燈掣	-	-	-	-	-	-	-	-	-	-	-	1	-	
	Lighting Point 燈位	-	-	-	-	-	-	-	-	-	-	-	1	-	

Notes :

- "1, 2,"denotes the quantity of such provision(s) provided in the residential unit.
- The quantity of the lighting switch shown in the schedule denotes the quantity of switch faceplate.
- 3./F is omitted.

備註：

- "1, 2," 表示提供於該住宅單位內的裝置數量。
- 說明表所顯示的燈掣數量是表示燈掣面板的數量。
- 不設四樓。

FITTINGS, FINISHES AND APPLIANCES

裝置、裝修物料及設備

SCHEDULE OF MECHANICAL & ELECTRICAL PROVISIONS OF RESIDENTIAL PROPERTIES

住宅物業機電裝置數量說明表

Tower 5
第5座

Location 位置	Description 描述	2/F, 3/F & 5/F (2樓、3樓及5樓)													
		A	B	C	D	E	F	G	H	J	K	L	M	N	
Shower Room 淋浴室	Fuse Spur Unit for Thermal Ventilator 浴室寶接線位	1	1	1	1	1	1	1	1	1	1	1	1	1	
	Thermal Ventilator Remote Control 浴室寶遙控器	1	1	1	1	1	1	1	1	1	1	1	1	1	
	Power Supply Point for Electric Water Heater 電熱水爐供電位	1	1	1	1	1	1	1	1	1	1	1	1	1	
	Electric Water Heater Remote Control 電熱水遙控器	1	1	1	1	1	1	1	1	1	1	1	1	1	
	13A Single Socket Outlet 13安培單位電插座	1	1	1	1	1	1	1	1	1	1	1	1	1	
	Connection Unit for Light Trough 燈槽接線座	1	1	1	1	1	1	1	1	1	1	1	1	1	
	Lighting Point 燈位	2	2	2	2	2	2	2	2	2	2	2	2	2	
	Lighting Switch 燈掣	2	2	2	2	2	2	2	2	2	2	2	2	2	
	Switch for Thermal Ventilator 浴室寶開關掣	1	1	1	1	1	1	1	1	1	1	1	1	1	
Open Kitchen 開放式廚房	Lighting Switch 燈掣	2	2	2	2	2	2	2	2	2	2	2	2	2	
	Lighting Point 燈位	2	2	2	2	2	1	1	2	2	1	2	2	2	
	13A Twin Socket Outlet 13安培雙位電插座	1	1	1	1	1	1	1	1	1	1	1	1	1	
	Fuse Spur Unit for Kitchen Cabinet Light 廚櫃燈接線位	1	1	1	1	1	1	1	1	1	1	1	1	1	
	Fuse Spur Unit Point for Cookerhood 抽油煙機接線位	1	1	1	1	1	1	1	1	1	1	1	1	1	
	Connection Unit for Induction Cooker Hob 電磁煮食爐接線位	1	1	1	1	1	1	1	1	1	1	1	1	1	
	Switch for Cooker Hob 電磁煮食爐開關掣	1	1	1	1	1	1	1	1	1	1	1	1	1	
	Socket Outlet for Microwave Oven 微波爐電插座	1	1	1	1	1	1	1	1	1	1	1	1	1	
	Socket Outlet for Refrigerator 雪櫃電插座	1	1	1	1	1	1	1	1	1	1	1	1	1	
	Miniature Circuit Breakers Board 微型總電掣箱	1	1	1	1	1	1	1	1	1	1	1	1	1	
	Smoke Detector 煙霧感應器	1	1	1	1	1	1	1	1	1	1	1	1	1	
Sprinkler Head 消防花灑頭 (Under ceiling & in ceiling void 假天花下及假天花內)	2	2	2	2	2	2	2	2	2	2	2	2	2		

Notes :

1. "1, 2," denotes the quantity of such provision(s) provided in the residential unit.
2. The quantity of the lighting switch shown in the schedule denotes the quantity of switch faceplate.
3. 4/F is omitted.

備註：

1. "1, 2," 表示提供於該住宅單位內的裝置數量。
2. 說明表所顯示的燈掣數量是表示燈掣面板的數量。
3. 不設四樓。

This page is deliberately left in blank 此版乃特意留白

FITTINGS, FINISHES AND APPLIANCES

裝置、裝修物料及設備

SCHEDULE OF MECHANICAL & ELECTRICAL PROVISIONS OF RESIDENTIAL PROPERTIES

住宅物業機電裝置數量說明表

Tower 5
第5座

Location 位置	Description 描述	2/F, 3/F & 5/F (2樓、3樓及5樓)													
		A	B	C	D	E	F	G	H	J	K	L	M	N	
Balcony 露台	Lighting Switch 燈掣	1	1	1	1	1	1	1	1	1	1	1	1	1	
	Lighting Point 燈位	1	1	1	1	1	1	1	1	1	1	1	1	1	
Utility Platform 工作平台	Lighting Switch 燈掣	1	1	1	1	1	1	1	1	1	-	-	1	1	
	Lighting Point 燈位	1	1	1	1	1	1	1	1	1	-	-	1	1	

Notes :

1. "1, 2,"denotes the quantity of such provision(s) provided in the residential unit.
2. The quantity of the lighting switch shown in the schedule denotes the quantity of switch faceplate.
3. 4/F is omitted.

140a

備註：

1. "1, 2," 表示提供於該住宅單位內的裝置數量。
2. 說明表所顯示的燈掣數量是表示燈掣面板的數量。
3. 不設四樓。

FITTINGS, FINISHES AND APPLIANCES

裝置、裝修物料及設備

SCHEDULE OF MECHANICAL & ELECTRICAL PROVISIONS OF RESIDENTIAL PROPERTIES

住宅物業機電裝置數量說明表

Tower 5
第5座

Location 位置	Description 描述	6/F (6樓)											
		A	B	C	D	E	F	G	H	K	L	M	N
Main Entrance 大門入口	Door Bell Push Button 門鈴按鈴	1	1	1	1	1	1	1	1	1	1	1	1
Living Room / Dining Room 客廳/飯廳	Switch for Indoor A/C Unit 室內空調機開關掣	1	2	2	2	2	1	1	2	1	1	1	1
	13A Twin Socket Outlet 13安培雙位電插座	2	3	3	3	3	3	2	2	3	2	3	2
	TV / FM Outlet 電視/電台插座	2	2	2	1	2	2	1	2	2	1	2	2
	Telephone Outlet 電話插座	2	2	2	1	2	2	1	2	2	1	2	2
	Lighting Switch 燈掣	3	3	4	4	3	3	3	3	3	3	4	3
	Lighting Point 燈位	3	3	4	4	3	4	3	4	3	3	4	3
	Door Phone 門口對講機	1	1	1	1	1	1	1	1	1	1	1	1
	Door Bell 門鈴	1	1	1	1	1	1	1	1	1	1	1	1
	Smoke Detector 煙霧感應器	-	-	1	1	-	-	-	1	-	-	1	-
Bedroom 1 睡房 1	Switch for Indoor A/C Unit 室內空調機開關掣	1	1	1	1	1	1	1	1	1	1	1	1
	13A Twin Socket Outlet 13安培雙位電插座	1	1	1	1	1	1	1	2	1	1	1	1
	13A Socket Outlet 13安培電插座	-	-	-	-	-	-	-	-	-	-	-	-
	TV / FM Outlet 電視/電台插座	1	1	1	1	1	1	1	1	1	1	1	1
	Lighting Switch 燈掣	1	1	1	1	1	1	1	1	1	1	1	1
	Lighting Point 燈位	1	1	1	1	1	1	1	1	1	1	1	1
Bedroom 2 睡房 2	Switch for Indoor A/C Unit 室內空調機開關掣	-	-	-	-	-	-	-	1	-	-	1	-
	13A Twin Socket Outlet 13安培雙位電插座	-	-	-	-	-	-	-	1	-	-	1	-
	TV / FM Outlet 電視/電台插座	-	-	-	-	-	-	-	1	-	-	1	-
	Lighting Switch 燈掣	-	-	-	-	-	-	-	1	-	-	1	-
	Lighting Point 燈位	-	-	-	-	-	-	-	1	-	-	1	-

Notes :

- "1, 2,"denotes the quantity of such provision(s) provided in the residential unit.
- The quantity of the lighting switch shown in the schedule denotes the quantity of switch faceplate.
- 4/F is omitted.

備註：

- "1, 2," 表示提供於該住宅單位內的裝置數量。
- 說明表所顯示的燈掣數量是表示燈掣面板的數量。
- 不設四樓。

FITTINGS, FINISHES AND APPLIANCES

裝置、裝修物料及設備

SCHEDULE OF MECHANICAL & ELECTRICAL PROVISIONS OF RESIDENTIAL PROPERTIES

住宅物業機電裝置數量說明表

Tower 5
第5座

Location 位置	Description 描述	6/F (6樓)											
		A	B	C	D	E	F	G	H	K	L	M	N
Shower Room 淋浴室	Fuse Spur Unit for Thermal Ventilator 浴室寶接線位	1	1	1	1	1	1	1	1	1	1	1	1
	Thermal Ventilator Remote Control 浴室寶遙控器	1	1	1	1	1	1	1	1	1	1	1	1
	Power Supply Point for Electric Water Heater 電熱水爐供電位	1	1	1	1	1	1	1	1	1	1	1	1
	Electric Water Heater Remote Control 電熱水遙控器	1	1	1	1	1	1	1	1	1	1	1	1
	13A Single Socket Outlet 13安培單位電插座	1	1	1	1	1	1	1	1	1	1	1	1
	Connection Unit for Light Trough 燈槽接線座	1	1	1	1	1	1	1	1	1	1	1	1
	Lighting Point 燈位	2	2	2	2	2	2	2	2	2	2	2	2
	Lighting Switch 燈掣	2	2	2	2	2	2	2	2	2	2	2	2
Switch for Thermal Ventilator 浴室寶開關掣	1	1	1	1	1	1	1	1	1	1	1	1	
Open Kitchen 開放式廚房	Lighting Switch 燈掣	2	2	2	2	2	2	2	2	2	2	2	2
	Lighting Point 燈位	2	1	2	2	1	1	1	2	1	2	2	2
	13A Twin Socket Outlet 13安培雙位電插座	1	1	1	1	1	1	1	1	1	1	1	1
	Fuse Spur Unit for Kitchen Cabinet Light 廚櫃燈接線位	1	1	1	1	1	1	1	1	1	1	1	1
	Fuse Spur Unit Point for Cookerhood 抽油煙機接線位	1	1	1	1	1	1	1	1	1	1	1	1
	Connection Unit for Induction Cooker Hob 電磁煮食爐接線位	1	1	1	1	1	1	1	1	1	1	1	1
	Switch for Cooker Hob 電磁煮食爐開關掣	1	1	1	1	1	1	1	1	1	1	1	1
	Socket Outlet for Microwave Oven 微波爐電插座	1	1	1	1	1	1	1	1	1	1	1	1
	Socket Outlet for Refrigerator 雪櫃電插座	1	1	1	1	1	1	1	1	1	1	1	1
	Miniature Circuit Breakers Board 微型總電掣箱	1	1	1	1	1	1	1	1	1	1	1	1
	Smoke Detector 煙霧感應器	1	1	1	1	1	1	1	1	1	1	1	1
Sprinkler Head 消防花灑頭 (Under ceiling & in ceiling void 假天花下及假天花內)	2	2	2	2	2	2	2	2	2	2	2	2	

Notes :

1. "1, 2," denotes the quantity of such provision(s) provided in the residential unit.
2. The quantity of the lighting switch shown in the schedule denotes the quantity of switch faceplate.
3. 4/F is omitted.

備註：

1. "1, 2," 表示提供於該住宅單位內的裝置數量。
2. 說明表所顯示的燈掣數量是表示燈掣面板的數量。
3. 不設四樓。

FITTINGS, FINISHES AND APPLIANCES

裝置、裝修物料及設備

SCHEDULE OF MECHANICAL & ELECTRICAL PROVISIONS OF RESIDENTIAL PROPERTIES

住宅物業機電裝置數量說明表

Tower 5
第5座

Location 位置	Description 描述	6/F (6樓)											
		A	B	C	D	E	F	G	H	K	L	M	N
Balcony 露台	Lighting Switch 燈掣	1	1	1	1	1	1	1	1	-	1	1	1
	Lighting Point 燈位	1	1	1	1	1	1	1	1	-	1	1	1
Utility Platform 工作平台	Lighting Switch 燈掣	1	1	1	1	1	1	1	1	1	1	1	1
	Lighting Point 燈位	1	1	1	1	1	1	1	1	1	1	1	1
Staircase access to MR/F 通往主天台的樓梯	Light Fittings 燈位	-	-	3	3	-	-	-	3	-	-	-	-
	Lighting Switch 燈掣	-	-	3	3	-	-	-	3	-	-	-	-
	Smoke Detector 煙霧感應器	-	-	1	1	-	-	-	1	-	-	-	-
MR/F 主天台	Light Fittings 燈位	-	-	8	8	-	-	-	8	-	-	-	-
	13A Weatherproof Single Socket Outlet 13安培防水單位電插座	-	-	2	2	-	-	-	2	-	-	-	-

Notes :

1. "1, 2,"denotes the quantity of such provision(s) provided in the residential unit.
2. The quantity of the lighting switch shown in the schedule denotes the quantity of switch faceplate.
3. 4/F is omitted.

備註：

1. "1, 2," 表示提供於該住宅單位內的裝置數量。
2. 說明表所顯示的燈掣數量是表示燈掣面板的數量。
3. 不設四樓。

SERVICE AGREEMENTS

服務協議

Potable and flushing water is supplied by Water Supplies Department.

食水及沖廁水由水務署供應。

Electricity is supplied by CLP Power Hong Kong Limited.

電力由中華電力有限公司供應。

GOVERNMENT RENT

地稅

The Vendor will pay / has paid outstanding Government rent in respect of the residential property up to and including the date of the Assignment of the residential property.

賣方會/已繳付有關住宅物業之地稅直至及包括住宅物業之買賣成交日期。

MISCELLANEOUS PAYMENTS BY PURCHASER

買方的雜項付款

On the delivery of the vacant possession of the residential property to the purchaser, the purchaser is liable to reimburse the Owner for the deposits for water and electricity.

在向買方交付住宅物業在空置情況下的管有權時，買方須向擁有人補還水及電力的按金。

On that delivery, the purchaser is not liable to pay to the Owner a debris removal fee.

在交付時，買方不須向擁有人支付清理廢料的費用。

The amount of deposits for water and electricity and debris removal fee is yet to be ascertained at the date on which the sales brochure is printed.

水及電力的按金及清理廢料的費用的款額於售樓說明書印製日尚未決定。

Note:

The purchaser should pay to the Manager and not the owner of the Development the debris removal fee.

附註：

買方須向發展項目管理人及不須向擁有人繳付清理廢料的費用。

DEFECT LIABILITY WARRANTY PERIOD

欠妥之處的保養責任期

As provided in the agreement for sale and purchase, defect liability warranty period for the residential property and the fittings, finishes and appliances specified in the agreement for sale and purchase is within 6 months after the date of completion of the sale and purchase of the residential property.

根據買賣合約，住宅物業及買賣合約所列出的裝置、裝修物料及設備之欠妥之處的保養責任期為該住宅物業買賣成交日期起計6個月內。

MAINTENANCE OF SLOPES

斜坡維修

1. The Land Grant requires the owners in the Development to maintain any slope at their own costs.
2. Special Condition No.(28) of the Land Grant stipulates that:-
 - (a) Where there is or has been any cutting away, removal or setting back of any land, or any building-up or filling-in or any slope treatment works of any kind whatsoever, whether with or without the prior written consent of the Director, either within the Lot or on any Government land, which is or was done for the purpose of or in connection with the formation, levelling or development of the Lot or any part thereof or any other works required to be done by the Grantee under the Land Grant, or for any other purpose, the Grantee shall at his own expense carry out and construct such slope treatment works, retaining walls or other support, protection, drainage or ancillary or other works as shall or may then or at any time thereafter be necessary to protect and support such land within the Lot and also any adjacent or adjoining Government or leased land and to obviate and prevent any falling away, landslip or subsidence occurring thereafter. The Grantee shall at all times during the term granted by the Land Grant maintain at his own expense the said land, slope treatment works, retaining walls or other support, protection, drainage or ancillary or other works in good and substantial repair and condition to the satisfaction of the Director.
 - (b) Nothing in Special Condition No.(28)(a) of the Land Grant shall prejudice the Government's rights under the Land Grant, in particular Special Condition No.(27) of the Land Grant.
 - (c) In the event that as a result of or arising out of any formation, levelling, development or other works done by the Grantee or owing to any other reason, any falling away, landslip or subsidence occurs at any time, whether in or from any land within the Lot or from any adjacent or adjoining Government or leased land, the Grantee shall at his own expense reinstate and make good the same to the satisfaction of the Director and shall indemnify the Government, its agents and contractors from and against all costs, charges, damages, demands and claims whatsoever which shall or may be made, suffered or incurred through or by reason of such falling away, landslip or subsidence.
 - (d) In addition to any other rights or remedies provided in the Land Grant for breach of the Land Grant, the Director shall be entitled by notice in writing to call upon the Grantee to carry out, construct and maintain the said land, slope treatment works, retaining walls, or other support, protection, and drainage or ancillary or other works or to reinstate and make good any falling away, landslip or subsidence, and if the Grantee shall neglect or fail to comply with the notice to the satisfaction of the Director within the period specified therein, the Director may forthwith execute and carry out any necessary works and the Grantee shall on demand repay to the Government the cost thereof, together with any administrative or professional fees and charges.
3. Each of the owners of residential properties is obliged to contribute towards the cost of maintenance work.
4. The plan for the slopes, retaining walls and related structures ("Slope Structures") constructed or to be constructed, within or outside the land on which the development is situated is set out on page 132.
5. Under the Deed of Mutual Covenant of the Development, the Manager shall have the owner's authority to engage suitable qualified personnel to inspect keep and maintain in good substantial repair and condition the Slope Structures as required by the Land Grant in accordance with "Geoguide 5 - Guide to Slope Maintenance" issued by the Geotechnical Engineering Office as amended from time to time and the maintenance manual for the Slope Structures and with such other guidelines issued from time to time by appropriate Government departments regarding the maintenance of slopes, retaining walls and related structures and to carry out any necessary works in relation thereto.

Note:

Unless otherwise defined in this sales brochure, capitalised and other terms used in this section shall have the same meaning of such terms used in the Land Grant and Deed of Mutual Covenant. Please refer to the Land Grant and Deed of Mutual Covenant for reference.

1. 批地文件規定，發展項目的擁有人須自費維修斜坡。
2. 批地文件特別條件第(28)條規定:-
 - (a) 倘若任何土地需要或已經被分割、移除、移後、堆積、堆填或進行任何類型的斜坡處理工程，不論有否經署長預先書面同意，亦不論是在該地段內或任何政府土地內，旨在或有關構建、平整或發展該地段或其部分或承授人按批地文件須要進行的任何其他工程或作任何其他用途，承授人須自費進行與修建該等斜坡處理工程、護土牆或其他承托物、保護物、排水或輔助工程或期後必要的其他工程，以便保護與承托該地段和任何毗鄰或毗連政府土地或出租土地內的土地，避免與防止期後發生任何塌方、山泥傾瀉或地陷。承授人須在批地文件下批出之年期自費保持該土地、斜坡處理工程、護土牆或其他承托物、保護物、排水或輔助工程或其他工程修葺狀態良好堅固，達致署長滿意。
 - (b) 批地文件特別條件第(28)(a)條不損害政府在批地文件下的權利，尤其批地文件特別條件第(27)條。
 - (c) 倘若因為任何構建、平整、發展或承授人進行其他工程或任何其他原因造成任何時候發生塌方、山泥傾瀉或地陷，不論發生在或來自該地段任何土地或任何毗鄰或毗連政府土地或出租土地，承授人須自費進行修復或彌補，達致署長滿意，並對該塌方、山泥傾瀉或地陷造成政府、其代理人及承建商承受、遭受或產生的一切費用、收費、損害賠償、要求及索償彌償他們。
 - (d) 除了批地文件所訂對違反批地文件的其他權利或補償外，署長有權發出書面通知要求承授人進行、修建及保養上述土地、斜坡處理工程、護土牆或其他承托物、保護物及排水系統或附屬工程或其他工程或復原及修復任何塌方、山泥傾瀉或地陷，及倘若承授人不理會或未能在通知指定的時期內執行該通知的要求，並達致署長滿意，署長可立即執行與進行任何必要工程，而承授人須在政府要求時償還政府因此產生的費用連同任何行政費或專業費用及收費。
3. 每名住宅物業擁有人均須分擔維修工程的費用。
4. 第132頁之圖則顯示已經或將會在發展項目所位於的土地之內或之外建造的斜坡、護土牆及有關構築物（「斜坡構築物」）。
5. 根據發展項目公契，管理人獲擁有人授權，聘請適當的合資格人士，按土力工程處印發的「岩土指南第五冊 - 斜坡維修指南」（以不時的修訂本為準）和斜坡保養手冊及有關政府部門不時發出有關保養斜坡、護土牆及相關構築物的其他指引，視察、維持及妥善保養批地文件要求的斜坡構築物並對其進行一切必要的工程。

註：

除在售楼說明書另有定義外，上述用詞的意義等同於批地文件及公契內該用詞的意義。請參閱批地文件及公契。

MAINTENANCE OF SLOPES


斜坡維修

Slope Structures Plan
斜坡構築物圖

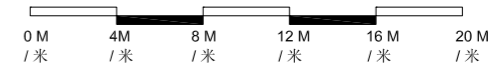


LEGEND: 圖例

 SLOPE STRUCTURES
斜坡構築物

 Boundary Line of the Development
發展項目邊界線

SCALE 比例:



MODIFICATION

修訂

Not Applicable

不適用

RELEVANT INFORMATION

有關資料

According to the relevant building regulations, owners are prohibited from removing or replacing the FRR wall(s) (fire resistant rating wall(s)) (if any) inside a residential unit with materials of non-FRR.

根據有關建築規例，業主不得移除或以其他非耐火等級物料更換住宅單位內的耐火等級牆(如有)。

Please refer to the “Floor Plans of Residential Properties in the Development” section of this Sales Brochure on pages 15 to 34 for more details on the location of the FRR wall(s).

有關耐火等級牆位置之詳情，請參閱本售樓說明書第15至第34頁之「發展項目的住宅物業的樓面平面圖」。

WEBSITE ADDRESS

互聯網網站的網址

www.marinpoint.com

INFORMATION IN APPLICATION FOR CONCESSION ON GROSS FLOOR AREA OF BUILDING

申請建築物總樓面面積寬免的資料

Breakdown of GFA Concessions Obtained for All Features

Latest information on breakdown of GFA concessions as shown on the general building plans submitted to and approved by the Building Authority (BA) prior to the printing of the sales brochure is tabulated below. Information marked (#) may be based on information provided by the authorized person if the sales brochure is printed prior to submission of the final amendment plans to the BA. The breakdown of GFA concessions may be subject to further changes until final amendment plans are submitted to and approved by the BA prior to the issuance of the occupation permit for the development.

Disregarded GFA Building (Planning) Regulations 23(3)(b)		Area (m ²)
1	Carpark and loading/unloading area excluding public transport terminus	827.185
2	Plant rooms and similar services	
2.1	Mandatory feature or essential plant room, area of which is limited by respective PNAP or regulation, such as lift machine room, TBE room, refuse storage chamber, etc	219.648
2.2	Mandatory feature or essential plant room, area of which is NOT limited by any PNAP or regulation, such as room occupied solely by FSI and equipment, meter room, transformer room, potable and flushing water tanks, etc.	306.839
2.3	Non-mandatory or non-essential plant room, such as A/C plant room, AHU room, etc	Not Applicable
Disregarded GFA under Building (Planning) Regulations 23A(3)		
3	Area for picking up and setting down persons departing from or arriving at the hotel by vehicle	Not Applicable
4	Supporting facilities for a hotel	Not Applicable
Green Features under JPNs		
5	Balcony for residential buildings	250
6	Wider common corridor and lift lobby	8.8
7	Communal sky garden	Not Applicable
8	Communal podium garden for non-residential buildings	Not Applicable
9	Acoustic fin	Not Applicable
10	Wing wall, wind catcher and funnel	Not Applicable
11	Non-structural prefabricated external wall	Not Applicable
12	Utility platform	189.750
13	Noise barrier	Not Applicable
Amenity Features		
14	Counter, office, store, guard room and lavatory for watchman and management staff, Owners' Corporation Office	38.487
15	Residential recreational facilities including void, plant room, swimming pool filtration plant room, covered walkway etc serving solely the recreational facilities	481.204
16	Covered landscaped and play area	Not Applicable
17	Horizontal screen/covered walkway, trellis	Not Applicable
18	Larger lift shaft	Not Applicable
19	Chimney shaft	Not Applicable
20	Other non-mandatory or non-essential plant room, such as boiler room, SMATV room	Not Applicable
21	Pipe duct, air duct for mandatory feature or essential plant room	97.987
22	Pipe duct, air duct for non-mandatory or non-essential plant room	Not Applicable

	Amenity Features	Area (m²)
23	Plant room, pipe duct, air duct for environmentally friendly system and feature	Not Applicable
24	High headroom and void in front of cinema, shopping arcade etc. in non-domestic development	Not Applicable
25	Void over main common entrance (prestige entrance) in non-domestic development	Not Applicable
26	Void in duplex domestic flat and house	Not Applicable
27	Sunshade and reflector	Not Applicable
28	Minor projection such as AC box, window cill, projecting window	158.804
29	Other projection such as air-conditioning box and platform with a projection of more than 750mm from the external wall	Not Applicable
Other Items		
30	Refuge floor including refuge floor cum sky garden	Not Applicable
31	Covered area under large projecting/overhanging feature	Not Applicable
32	Public transport terminus (PTT)	Not Applicable
33	Party structure and common staircase	Not Applicable
34	Horizontal area of staircase, lift shaft and vertical duct solely serving floor accepted as not being accountable for GFA	206.782
35	Public passage	Not Applicable
36	Covered set back area	Not Applicable
Bonus GFA		
37	Bonus GFA	Not Applicable

Note: The above table is based on the requirement as stipulated in Practice Note for Authorized Persons, Registered Structural Engineers and Registered Geotechnical Engineers ADM-2 issued by the Buildings Department. The Buildings Department may revise such requirements from time to time as appropriate.

Environmental Assessment of the building and Information on the estimated energy performance or consumption for the common parts of the development

The approved general building plans of this Development are not subject to the requirements stipulated in the Practice Note for Authorized Persons, Registered Structural Engineers and Registered Geotechnical Engineers APP-151 issued by the Building Authority. Environmental assessment and information on the estimated energy performance or consumption for the common parts of this Development were not required to be submitted to the Building Authority as a prerequisite for the granting of gross floor area concessions.

INFORMATION IN APPLICATION FOR CONCESSION ON GROSS FLOOR AREA OF BUILDING

申請建築物總樓面面積寬免的資料

獲寬免總樓面面積的設施分項

於印製售樓說明書前呈交予並已獲建築事務監督批准的一般建築圖則上有關總樓面面積寬免的分項的最新資料，請見下表。如印製售樓說明書時尚未呈交最終修訂圖則予建築事務監督，則有(#)號的資料可以由認可人士提供的資料作為基礎。直至最終修訂圖則於發出佔用許可證前呈交予並獲建築事務監督批准前，以下分項資料仍可能有所修改。

根據建築物(規劃)規例第23(3)(b)條不計算的總樓面面積		面積(平方米)
1	停車場及上落客貨地方(公共交通總站除外)	827.185
2	機房及相類設施	
2.1	所佔面積受相關(作業備考)或規例限制的強制性設施或必要機房，例如升降機機房、電訊及廣播設備室、垃圾房等	219.648
2.2	所佔面積不受任何(作業備考)或規例限制的強制性設施或必要機房，例如僅由消防裝置及設備佔用的房間、電錶房、電力變壓房、食水及鹹水缸等	306.839
2.3	非強制性或非必要機房，例如空調機房、風機房等	不適用
根據建築物(規劃)規例第23A(3)條不計算的總樓面面積		
3	供人離開或到達旅館時上落汽車的地方	不適用
4	旅館的輔助性設施	不適用
根據(聯合作業備考)提供的環保設施		
5	住宅樓宇露台	250
6	加闊的公用走廊及升降機大堂	8.8
7	公用空中花園	不適用
8	非住宅樓宇的公用平台花園	不適用
9	隔聲簷	不適用
10	翼牆、捕風器及風斗	不適用
11	非結構預製外牆	不適用
12	工作平台	189.750
13	隔音屏障	不適用
適意設施		
14	供保安人員和管理處員工使用的櫃枱、辦公室、儲物室、警衛室和廁所、業主立案法團辦公室	38.487
15	住宅康樂設施，包括僅供康樂設施使用的中空、機房、游泳池的濾水器機房、有蓋人行通道等	481.204
16	有上蓋的園景區及遊樂場	不適用
17	橫向屏障/有蓋人行道、花棚	不適用
18	擴大升降機井道	不適用
19	煙囪管道	不適用
20	其他非強制性或非必要機房，例如爐房、衛星電視共用天線房	不適用
21	強制性設施或必要機房所需的管槽、氣槽	97.987
22	非強制性設施或非必要機房所需的管槽、氣槽	不適用

INFORMATION IN APPLICATION FOR CONCESSION ON GROSS FLOOR AREA OF BUILDING

申請建築物總樓面面積寬免的資料

	適意設施	面積(平方米)
23	環保系統及設施所需的機房、管槽、氣槽	不適用
24	非住用發展項目中電影院、商場等的較高的淨高及前方中空	不適用
25	非住用發展項目的公用主要入口(尊貴入口)上方的中空	不適用
26	複式住宅單位及洋房的中空	不適用
27	遮陽篷及反光罩	不適用
28	小型伸出物，例如空調機箱、窗台、伸出的窗台	158.804
29	其他伸出物，如空調機箱及伸出外牆超過750毫米的平台	不適用
其他項目		
30	庇護層，包括庇護層兼空中花園	不適用
31	大型伸出/外懸設施下的有蓋面積	不適用
32	公共交通總站	不適用
33	共同構築物及樓梯	不適用
34	僅供獲接納不計入總樓面面積的樓層使用的樓梯、升降機槽及垂直管道的水平面積	206.782
35	公眾通道	不適用
36	因樓宇後移導致的覆蓋面積	不適用
額外總樓面面積		
37	額外總樓面面積	不適用

註：上述表格是根據屋宇署所發出的《認可人士、註冊結構工程師及註冊岩土工程師作業備考》ADM-2 規定的要求而制訂的。屋宇署會按實際需要不時更改有關要求。

有關建築物的環境評估及發展項目的公用部分的預計能量表現或消耗的資料

本發展項目的經批准一般建築圖則不受由建築事務監督發出的《認可人士、註冊結構工程師及註冊岩土工程師作業備考》APP-151規定規限。本發展項目的環境評估及公用部分的預計能量表現或消耗的資料無須呈交建築事務監督，以作為批予總樓面面積寬免的先決條件。

INFORMATION REQUIRED TO BE SET OUT BY THE DIRECTOR OF LANDS UNDER CONSENT SCHEME

按地政總署署長同意方案要求列出的資料

1. The Vendor will pay or has paid (as the case may be) all outstanding Government rent in respect of the land on which the Development is in the course of being erected, from the date of the Government Grant up to and including the date of the respective Assignments to the purchasers.
2. Special Condition No.(13) of the Government Grant provides that:-
 - (a) Throughout the term granted by the Government Grant, the Grantee (which expression for the purposes of Special Condition No.(13) shall include his successors and assigns and his or their executors, administrators, mortgagees, chargees, tenants or other occupiers whether lawful or otherwise) shall not assign, underlet, part with possession of or otherwise dispose of the Lot or any part thereof or any interest therein (including undivided shares in the Lot) or any building or part of any building thereon, or enter into any agreement so to do, other than to a person (or to persons with at least one of such persons) who or to a company of which at least one of the directors, at the time of any disposal or purported disposal as aforesaid, holds a valid resident Frontier Closed Area Permit for Sha Tau Kok area issued by the Commissioner of Police under the Public Order Ordinance, any regulations made thereunder and any amending legislation.
 - (b) The mortgagees or chargees of the Lot or any part thereof or any interests therein (including undivided shares in the Lot) or any building or part of any building thereon, shall not, whether for the purpose of enforcing its security or otherwise, assign, underlet, part with possession of or otherwise dispose of the Lot or any part thereof or any interest therein (including undivided shares in the Lot) or any building or part of any building thereon, or enter into any agreement so to do, other than to a person (or to persons with at least one of such persons) who or to a company of which at least one of the directors, at the time of any disposal or purported disposal as aforesaid, holds a valid resident Frontier Closed Area Permit for Sha Tau Kok area issued by the Commissioner of Police under the Public Order Ordinance, any regulations made thereunder and any amending legislation.
 - (c) Any involuntary alienation of the Lot or any part thereof or any interest therein (including undivided shares in the Lot) or any building or part of any building thereon of the Grantee (which expression shall include his successors and assigns and his or their executors or administrators) arising by operation of law shall not of itself constitute a breach of Special Condition No.(13)(a). In the event of such involuntary alienation occurring, except with the prior written consent of the Director of Lands and in conformity with any conditions imposed by him (including the payment of such fees as may be required by him), the executors, administrators, trustee in bankruptcy or other lawful representatives of the Grantee or his estate shall not assign, underlet, part with possession of or otherwise dispose of the Lot or any interest therein (including undivided shares in the Lot) or any building or part of any building thereon or enter into any agreement so to do, other than to a person (or to persons with at least one of such persons) who or to a company of which at least one of the directors, at the time of any disposal or purported disposal as aforesaid, holds a valid resident Frontier Closed Area Permit for Sha Tau Kok area issued by the Commissioner of Police under the Public Order Ordinance, any regulations made thereunder and any amending legislation provided that vesting by way of an assent to the beneficiary or beneficiaries entitled to the estate of any deceased Grantee is allowed without the prior written consent of the Director of Lands.
 - (d) (i) For the purposes of the Land Grant, the decision of the Commissioner of Police as to what constitutes a valid resident Frontier Closed Area Permit for Sha Tau Kok area shall be final and binding on the Grantee.
(ii) For the purposes of Special Condition No.(13)(c), the decision of the Director of Lands as to what constitutes any involuntary alienation arising by operation of law shall be final and binding on the Grantee.
- (e) Special Condition Nos.(13)(a), (b), (c) and (d) shall not apply to:
 - (i) the Grantee's assignment, underletting, parting with possession of or disposal of the Lot or any part thereof or any interest therein (including undivided shares in the Lot) to his spouse, children, parents or such other family members as shall be approved by the Director of Lands at his discretion;
 - (ii) any units in the lowest floor (excluding any basement floor(s) (if erected)) of any building or buildings to be erected on the Lot or any part thereof designed and intended to be used for retail shop purpose and the undivided shares allocated or to be allocated thereto;
 - (iii) any parking spaces provided under Special Condition No.(19)(b)(i) (as may be varied under Special Condition No.(21)) and any motor cycle parking spaces provided under Special Condition No.(19)(d)(i)(II) and the undivided shares allocated or to be allocated thereto; and
 - (iv) the Common Areas referred to in Special Condition No.(16)(a)(v) and the undivided shares allocated or to be allocated thereto.
3. Special Condition No.(6)(d) of the Land Grant provides that:-

the total number of residential units erected or to be erected on the Lot shall not be less than 240 and for the purposes of this sub-clause (d):

 - (i) a detached, semi-detached or terraced house which is intended for use as a single family residence shall be regarded as a residential unit;
 - (ii) the decision of the Director of Lands as to what constitutes a detached, semi-detached or terraced house and whether such house is intended for use as a single family residence shall be final and binding on the Purchaser; and
 - (iii) the decision of the Director of Lands as to what constitutes a residential unit shall be final and binding on the Purchaser.
4. Clause 43 of Section 5 in the Deed of Mutual Covenant and Management Agreement provides that:-

The Manager shall deposit in the management office the record provided by the Director of Lands or any other Government authority in place of him from time to time of the information relating to the consent referred to in Paragraph 1(b) of the Third Schedule for inspection by all Owners free of costs and for taking copies at their own expenses and on payment of a reasonable charge, all charges received to be credited to the Special Fund.

INFORMATION REQUIRED TO BE SET OUT BY THE DIRECTOR OF LANDS UNDER CONSENT SCHEME

按地政總署署長同意方案要求列出的資料

5. Clause 1(b) of the Third Schedule in the Deed of Mutual Covenant and Management Agreement provides that:-
No Owner shall carry out or permit or suffer to be carried out any works in connection with any Residential Unit, including but not limited to demolition or alteration of any partition wall or any floor or roof slab or any partition structure, which will result in such Residential Unit being internally linked to and accessible from any adjoining or adjacent Residential Unit, except with the prior written consent of the Director of Lands or any other Government authority in place of him from time to time, which consent may be given or withheld at his absolute discretion and if given, may be subject to such terms and conditions (including payment of fees) as may be imposed by him at his absolute discretion.

6. The total number of residential units in the Development is 261.

INFORMATION REQUIRED TO BE SET OUT BY THE DIRECTOR OF LANDS UNDER CONSENT SCHEME

按地政總署署長同意方案要求列出的資料

1. 賣方將會或已經(視屬何情況而定)支付所有關於發展項目在其上興建之土地由批地文件日期起計至相關買家轉讓契日期(包括該兩日)期間之未付地租。

2. 批地文件之特別條件第(13)條規定:

- (a) 在批地文件下批出之年期, 承授人(就特別條件第(13)條而言, 本詞包括其繼承人及受讓人及其遺產執行人、遺產管理人、承授人、承押記人、承租人或其他不論合法與否的佔用人)不得轉讓、分租、放棄管有或以其他方式處置該地段或其部份或其任何利益(包括該地段的不分割份數)或任何建築物或其部份, 或訂立相關協議, 除非於進行上述處置或擬議處置時, 該等處置或擬議處置是予某人或某公司, 而該人(可為一人或多人的至少其中一人)或該公司其中至少一名董事持有由警務處處長按《公安條例》、其附屬規例及任何修訂法例發出的沙頭角地區有效居民邊境禁區許可證。
- (b) 該地段或其部份或其任何利益(包括該地段的不分割份數)或任何建築物或其部份的承授人或承押記人, 無論是否為行使抵押品, 不得轉讓、分租、放棄管有或以其他方式處置該地段或其部份或其任何利益(包括該地段的不分割份數)或任何建築物或其部份, 或訂立相關協議, 除非於進行上述處置或擬議處置時, 該等處置或擬議處置是予某人或某公司, 而該人(可為一人或多人的至少其中一人)或該公司其中至少一名董事持有由警務處處長按《公安條例》、其附屬規例及任何修訂法例發出的沙頭角地區有效居民邊境禁區許可證。
- (c) 承授人(本詞包括其繼承人及受讓人及其遺產執行人或遺產管理人)因法律的施行而就該地段或其部份或其任何利益(包括該地段的不分割份數)或任何建築物或其部份所作的任何非自願轉讓, 本身並不違反特別條件第(13)(a)條。倘若出現該等非自願轉讓, 除獲地政總署署長事先書面同意及符合他施加的任何條件(包括支付他要求的款項)外, 承授人或其遺產的遺產執行人、遺產管理人、破產案受託人或其他合法代表均不得轉讓、分租、放棄管有或以其他方式處置該地段或其部份或其任何利益(包括該地段的不分割份數)或任何建築物或其部份, 或訂立相關協議, 除非於進行上述處置或擬議處置時, 該等處置或擬議處置是予某人或某公司, 而該人(可為一人或多人的至少其中一人)或該公司其中至少一名董事持有由警務處處長按《公安條例》、其附屬規例及任何修訂法例發出的沙頭角地區有效居民邊境禁區許可證。惟以允許書形式轉讓予有權承受任何已故承授人遺產的受益人則無須地政總署署長事先書面同意。
- (d) (i) 就批地文件而言, 警務處處長對沙頭角地區有效居民邊境禁區許可證的界定是最終決定及約束承授人。
(ii) 就特別條件第(13)(c)條而言, 地政總署署長對因法律的施行所作的非自願轉讓的界定是最終決定及約束承授人。
- (e) 特別條件第(13)(a)、(b)、(c)及(d)條不適用於:
- (i) 承授人轉讓、分租、放棄管有或處置該地段或其部份或其任何利益(包括該地段的不分割份數)予其配偶、子女、父母或地政總署署長酌情批准的其他家庭成員;
- (ii) 該地段或其部份任何將建成建築物的最低樓層(不包括任何地庫層(如建有))用作零售商舖的任何單位及其獲分配或將分配的不分割份數;
- (iii) 按特別條件第(19)(b)(i)條(可按特別條件第(21)條修訂)提供的任何車位及按特別條件第(19)(d)(i)(II)條提供的任何電單車車位及其獲分配或將分配的不分割份數; 及
- (iv) 特別條件第(16)(a)(v)條所述的公用地方及其獲分配或將分配的不分割份數。

3. 批地文件特別條款第(6)(d)條規定:-

在該地段已建或擬建的住宅物業總數不得少於240個, 並就本(d)分條而言:

- (i) 一座擬作為單一家庭住宅的獨立屋、半獨立屋或排屋均被視為一個住宅單位;
- (ii) 地政總署署長對獨立屋、半獨立屋或排屋的定義和該等房屋是否構成或提供個別家庭居住之界定是最終決定及約束買方; 及
- (iii) 地政總署署長對住宅單位的定義之界定是最終決定及約束買方。

4. 公契及管理協議第5章第43條規定:-

管理人須在管理處備存一份由地政總署署長或任何其他不時替代其位的政府主管當局根據附表三第1(b)段所發出的同意的資料記錄, 以供所有業主免費查閱及自費影印該資料記錄, 並繳付合理費用。所有就此收取的費用一律撥入特別基金。

5. 公契及管理協議附表三第1(b)段規定:-

除非事先獲得地政總署署長或任何其他不時替代其位的政府主管當局的書面同意, 否則任何業主不得進行或允許或容忍他人進行任何與住宅單位相關而可導致該住宅單位內部相連及通往任何毗連或毗鄰的住宅單位的工程, 包括但不限於拆卸或更改任何分隔牆或任何樓板或天台樓板或任何間隔結構。而地政總署署長具有絕對酌情權給予同意或拒絕同意, 倘若給予同意, 業主須遵從地政總署署長按其絕對酌情權附加的任何條款及條件(包括支付費用)。

6. 發展項目的住宅物業總數為261個。

DATE OF PRINTING OF SALES BROCHURE

售樓說明書印製日期

21 April 2017

2017年4月21日

POSSIBLE FUTURE CHANGE

日後可能出現的改變

There may be future changes to the Development and the surrounding areas.

發展項目及其周邊地區日後可能出現改變。

EXAMINATION RECORD

檢視紀錄

Examination/Revision Date 檢視/修改日期	Revision Made 所作修改	
	Page Number 頁次	Revision Made 所作修改
28 April 2017 2017年4月28日	105	Revise the Fittings, Finishes and Appliances 修改裝置、裝修物料及設備
	108	Revise the Fittings, Finishes and Appliances 修改裝置、裝修物料及設備
9 May 2017 2017年5月9日	70	Revise the Area of Residential Properties in the Development 修改發展項目中的住宅物業的面積
16 June 2017 2017年6月16日	57	Revise the Area of Residential Properties in the Development 修改發展項目中的住宅物業的面積
14th September 2017 2017年9月14日	02, 03, 04, 05, 05A, 05B	Revise the Notes to Purchasers of First-Hand Residential Properties 修改一手住宅物業買家須知
7th December 2017 2017年12月7日	11	Update the Location Plan of the Development 更新發展項目的所在位置圖
6th March 2018 2018年3月6日	No revision made 並無作出修改	
5th June 2018 2018年6月5日	114	Revise the Fittings, Finishes and Appliances 修改裝置、裝修物料及設備
4th September 2018 2018年9月4日	11	Update the Location Plan of the Development 更新發展項目的所在位置圖
	12	Update the Aerial Photograph of the Development 更新發展項目的鳥瞰照片
18th September 2018 2018年9月18日	06	Update the Information on the Development 更新發展項目的資料
	09	Update the Information on Design of the Development 更新發展項目的設計的資料
	11	Update the Location Plan of the Development 更新發展項目的所在位置圖
	14	Update the Layout Plan of the Development 更新發展項目的布局圖
	150, 151, 152, 153	Update the Information in Application for Concession on Gross Floor Area of Building 更新申請建築物總樓面面積寬免的資料

Examination/Revision Date 檢視/修改日期	Revision Made 所作修改	
	Page Number 頁次	Revision Made 所作修改
18th December 2018 2018年12月18日	06	Updated the Information on the Development 更新發展項目的資料
	10	Updated the Information on Property Management 更新物業管理的資料
	11	Updated the Location Plan of the Development 更新發展項目的所在位置圖
	16, 17, 18, 19, 20, 21, 22, 23, 25, 26, 27, 28, 29, 30, 31, 32, 33, 35, 36, 37, 38, 39, 40, 41, 42, 43, 45, 46, 47, 48, 49, 50, 51, 52, 53, 55,	Revised the Floor Plans of Residential Properties in the Development 修改發展項目的住宅物業的樓面平面圖
	77, 81, 82, 85	Updated the Summary of Deed of Mutual Covenant 更新公契的摘要
	104	Updated the Inspection of Plans and Deed of Mutual Covenant 更新閱覽圖則及公契
	106, 109, 111, 113, 114, 116, 117, 117a, 118, 119, 119a, 120, 121, 122, 122a, 123, 124, 124a, 125, 126, 126a, 127, 128, 129, 130, 131, 131a, 132, 133, 133a, 134, 135, 136, 136a, 137, 138, 138a, 139, 140, 140a, 141, 142, 143	Revised the Fittings, Finishes and Appliances 修改裝置、裝修物料及設備
154,155,156	Updated the Information Required to be Set Out by the Director of Lands under Consent Scheme 更新按地政總署署長同意方案要求列出的資料	
13th March 2019 2019年3月13日	No revision made 並無作出修改	
13th June 2019 2019年6月13日	11	Updated the Location Plan of the Development 更新發展項目的所在位置圖
13th September 2019 2019年9月13日	11	Updated the Location Plan of the Development 更新發展項目的所在位置圖
12th December 2019 2019年12月12日	11	Updated the Location Plan of the Development 更新發展項目的所在位置圖
	12A	Added the Aerial Photograph of the Development 新增發展項目的鳥瞰照片
11th March 2020 2020年3月11日	11	Updated the Location Plan of the Development 更新發展項目的所在位置圖

