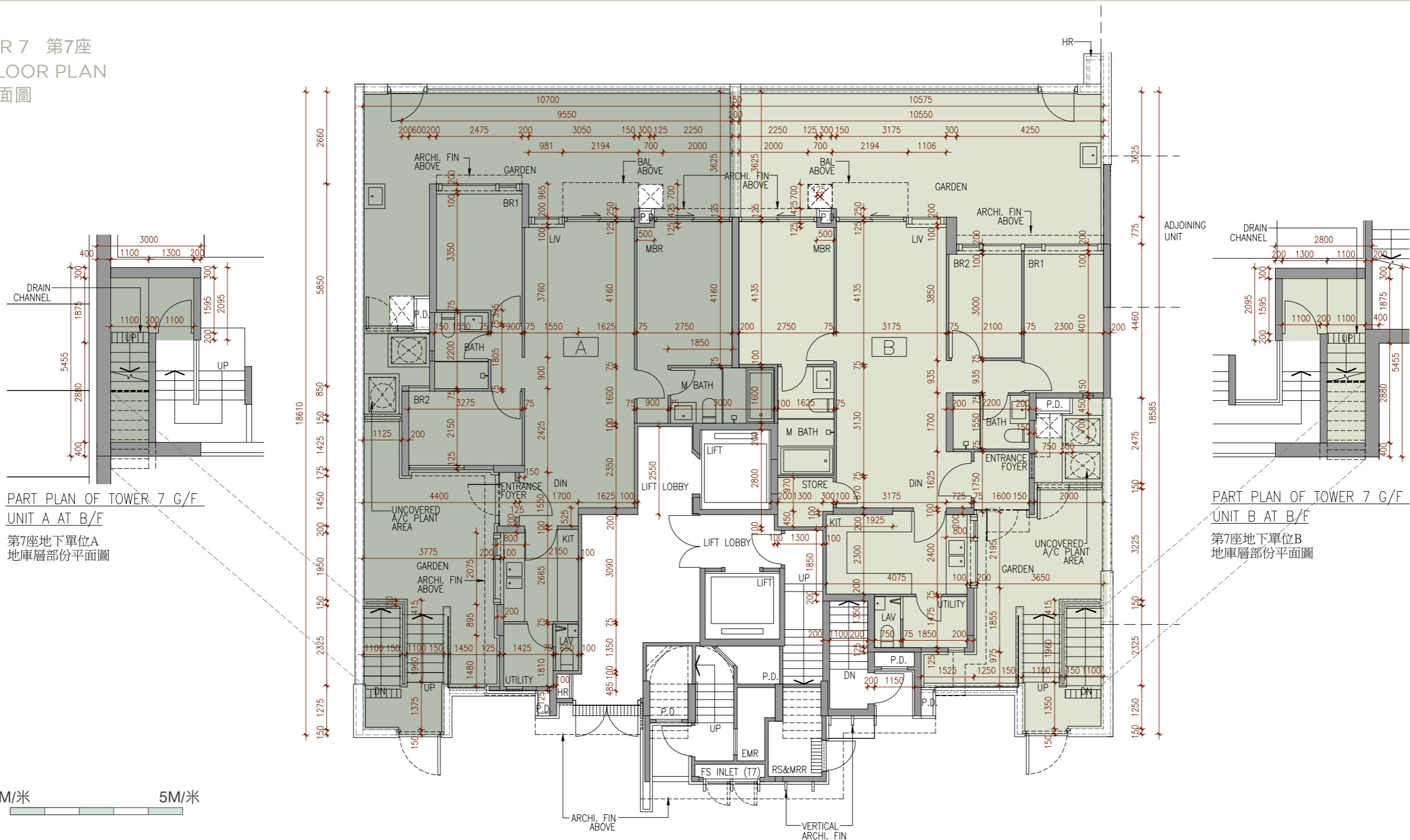


FLOOR PLANS OF RESIDENTIAL PROPERTIES IN THE DEVELOPMENT 發展項目的住宅物業的樓面平面圖

TOWER 7 第7座
G/F FLOOR PLAN
地下平面圖



Scale: 0M/米
比例:

	Floor 樓層	Units 單位	
		A	B
The thickness of the floor slabs (excluding plaster) of each residential property (mm) 每個住宅物業的樓板(不包括灰泥)的厚度(毫米)	Basement Floor 地庫層	250	250
	G/F 地下	150	150
The floor-to-floor height of each residential property (mm) 每個住宅物業的層與層之間的高度(毫米)	Basement Floor 地庫層	3000, 3150, 3640, 4280	3000, 3150, 3640, 4280
	G/F 地下	3000, 3150, 3250, 3350, 3425, 3500	3150, 3250, 3350, 3425, 3500

The internal areas of the residential properties on the upper floors will generally be slightly larger than those on the lower floors because of the reducing thickness of the structural walls on the upper floors. (Remark: The aforesaid statement is not applicable to this Development.)