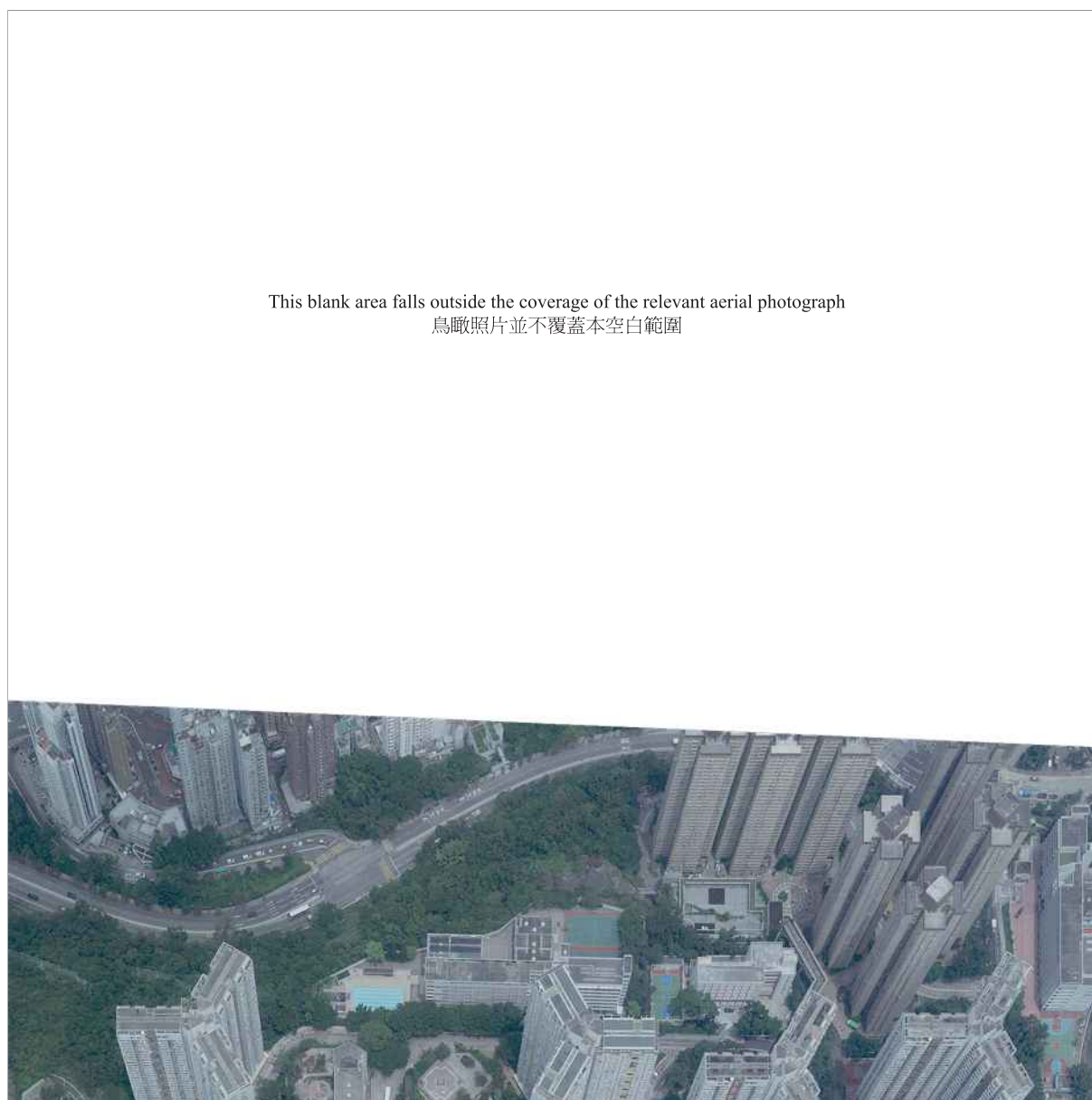


7 AERIAL PHOTOGRAPH OF THE DEVELOPMENT 發展項目的鳥瞰照片



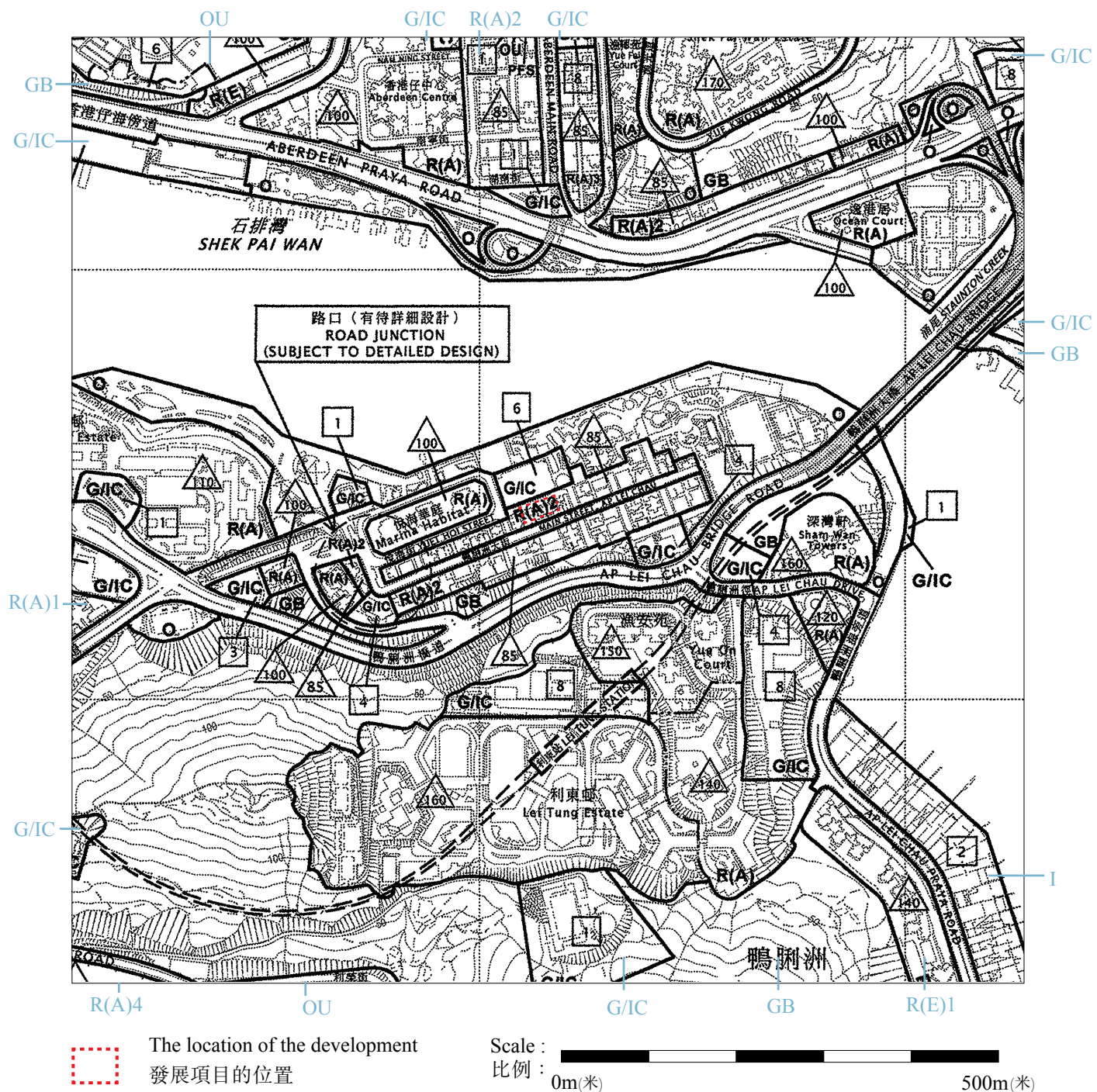
Survey and Mapping Office, Lands Department, The Government of HKSAR© Copyright reserved – reproduction by permission only.
香港特別行政區政府地政總署測繪處版權所有，未經許可，不得複製。

Adopted from part of the aerial photograph taken by the Survey and Mapping Office of the Lands Department at a flying height of 3,000 feet, Photo No. E061049C dated 28th August 2019.

摘錄自地政總署測繪處於2019年8月28日在3,000呎飛行高度拍攝之鳥瞰照片，編號為E061049C。

Note : Due to technical reasons, this aerial photograph has shown more than the area required under the Residential Properties (First-hand Sales) Ordinance.
備註：因技術性問題，此鳥瞰照片所顯示的範圍超過《一手住宅物業銷售條例》的規定。

8 OUTLINE ZONING PLAN ETC. RELATING TO THE DEVELOPMENT 關乎發展項目的分區計劃大綱圖等



Excerpt from the drafted Aberdeen and Ap Lei Chau (Hong Kong Planning Area No.15 & 16) Outline Zoning Plan with Plan No. S/H15/33 gazetted on 31st August 2018.

摘錄自 2018年8月31日刊憲之香港仔及鴨脷洲(港島規劃區第15及16區)分區計劃大綱草圖，圖則編號為S/H15/33。

NOTATION 圖例

ZONES 地帶

- R(A) Residential (Group A)
住宅(甲類)
- R(E) Residential (Group E)
住宅(戊類)
- G/I/C Government, Institution
or Community
政府、機構或社區
- O Open Space 休憩用地
- OU Other Specified Uses
其他指定用途
- GB Green Belt 綠化地帶
- I Industrial 工業

COMMUNICATIONS 交通

- Railway And Station (Underground) 鐵路及車站 (地下)
- Major Road And Junction 主要道路及路口
- Elevated Road 高架道路

MISCELLANEOUS 其他

- Buildary Height Control Zone Boundary
建築物高度管制區界線
- Maximum Building Height
(In Metres Above Principal Datum)
最高建築物高度(在主水平基準上若干米)
- Maximum Building Height (In Number of Storeys)
最高建築物高度(樓層數目)
- P F S Petrol Filling Station 加油站

Note : Due to technical reasons, this outline zoning plan has shown more than the area required under the Residential Properties (First-hand Sales) Ordinance.
 備註 : 因技術性問題，此分區計劃大綱圖所顯示的範圍超過《一手住宅物業銷售條例》的規定。

9 LAYOUT PLAN OF THE DEVELOPMENT 發展項目的布局圖

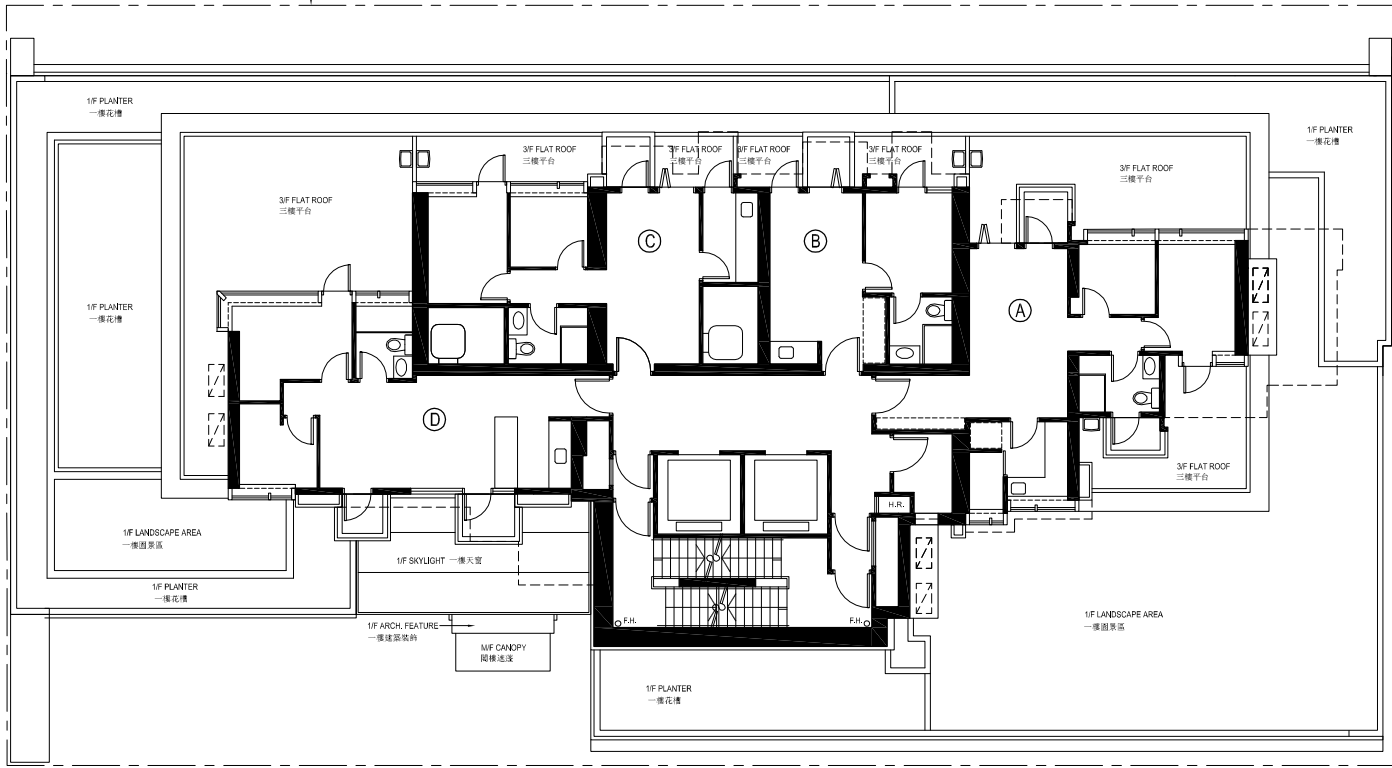


BOUNDARY LINE
OF THE DEVELOPMENT
發展項目的地界線

PEDESTRIAN WAY
行人路

ADJOINING BUILDING
毗鄰建築物

ADJOINING BUILDING
毗鄰建築物



MAIN STREET, AP LEI CHAU
鴨脷洲大街

SCALE / 比例尺: 0 5M(米)

10 FLOOR PLANS OF RESIDENTIAL PROPERTIES IN THE DEVELOPMENT

發展項目的住宅物業的樓面平面圖

The remarks and legends on this page apply to all pages of "Floor plans of residential properties in the development".
在本頁上之備註和圖例適用於全部的「發展項目的住宅物業的樓面平面圖」頁數。

Legends of the Floor Plans

樓面平面圖圖例

A/C PLATFORM	=	Air-conditioner Platform 冷氣機平台
☺☺☺	=	Air-conditioning unit 冷氣機
ARCH. FEATURE	=	Architectural Feature 建築裝飾
BAL.	=	Balcony 露台
B.	=	Bathroom 浴室
C.L.	=	Cat Ladder 爬梯
M.B.R.1	=	Master Bedroom 1 主人睡房 1
B.R. 1	=	Bedroom 1 睡房 1
B.R. 2	=	Bedroom 2 睡房 2
B.R. 3	=	Bedroom 3 睡房 3
B.R. 4	=	Bedroom 4 睡房 4
ELECT. METER CABINET	=	Electric Meter Cabinet 電錶房
H.R.	=	Hose Reel 消防喉轆
KIT.	=	Kitchen 廚房
LIV./DIN.	=	Living Room / Dining Room 客廳/飯廳
L/L	=	Lower Level 低處
P.D.	=	Pipe Duct 管槽
STORE	=	Store Room 儲物房
T.O.B.	=	Top of Balcony 露台上蓋
T.O.U.P.	=	Top of Utility Platform 工作平台上蓋
U.P.	=	Utility Platform 工作平台
☐☐☐	=	Built-in fittings provided in the flats 隨樓附送的嵌入式裝置

Remarks:

1. Common pipes exposed or enclosed in cladding may be located at the balcony, utility platform, flat roof, roof or external wall of some residential units.
2. There may be sunken slabs at some parts of the ceiling inside some residential units for the installation of mechanical and electrical services of the floor above or due to the structural, architectural and/or decoration design requirements of the floor above.
3. There may be ceiling bulkheads or false ceiling inside some residential units for the installation of air-conditioning conduits and/or other mechanical and electrical services.
4. The dimensions of the floor plans are all structural dimensions in millimeter.
5. Blank areas on flat roof are common areas for building facility maintenance.

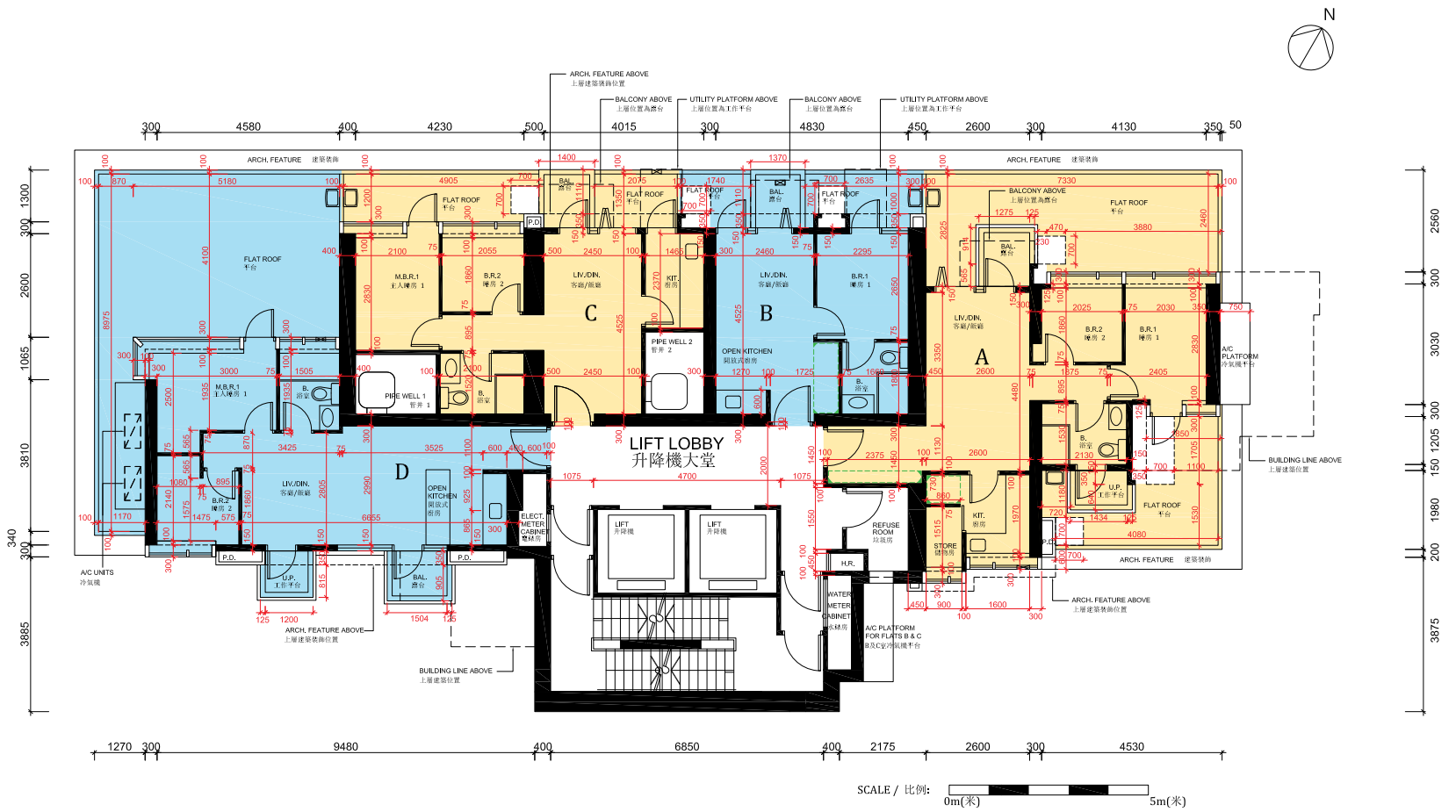
備註：

1. 部分住宅單位的露台、工作平台、平台、天台或外牆或設有外露之公用喉管，或外牆裝飾板內藏之公用喉管。
2. 部分住宅單位內之部分天花或有跌級樓板，用以安裝上層之機電設備或配合上層之結構、建築設計及 / 或裝修設計上的需要。
3. 部分住宅單位內或設有假陣或假天花用以安裝冷氣喉管及 / 或其他機電設備。
4. 平面圖所列之數字以毫米標示之建築結構尺寸。
5. 平台空白位置為供維修大廈設備使用的公用地方。

10 FLOOR PLANS OF RESIDENTIAL PROPERTIES IN THE DEVELOPMENT

發展項目的住宅物業的樓面平面圖

3/F Floor Plan 3樓平面圖



Each Residential Property 每個住宅物業	Flat 室 Floor 樓層	A	B	C	D
Floor to Floor Height (mm) 層與層之間的高度 (毫米)	3/F 3樓	3150	3150	3150	3150
Thickness of Floor Slab (excluding plaster) (mm) 樓板 (不包括灰泥) 的厚度 (毫米)		150	175	150	225

Notes: Blank areas on flat roof are common areas for building facility maintenance.

備註：平台空白位置為供維修大廈設備使用的公用地方。

Notes: The dimensions in floor plans are all structural dimensions in millimeter.

備註：平面圖所列的數字為以毫米標示之建築結構尺寸。

The internal areas of the residential properties on the upper floors will generally be slightly larger than those on the lower floors because of the reducing thickness of the structural walls on the upper floors.

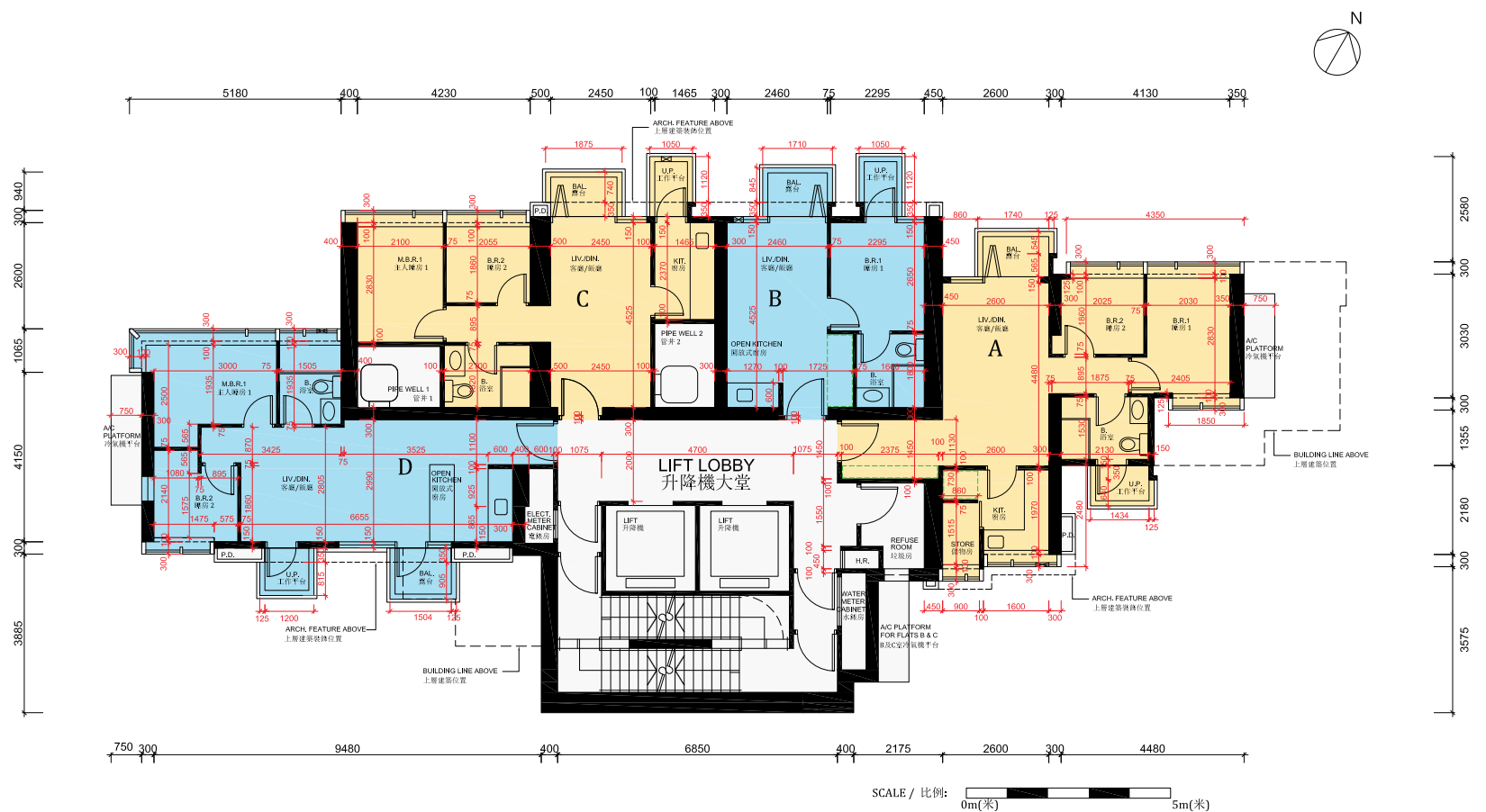
因住宅物業的較高樓層的結構牆的厚度遞減，較高樓層的內部面積，一般比較低樓層的內部面積稍大。

Please refer to page 15 of this sales brochure for the remarks and legends of the terms and abbreviations for the floor plans of residential properties.

請參閱本售樓說明書第 15 頁為住宅物業樓面平面圖而設之備註及名詞及簡稱的圖例。

10 FLOOR PLANS OF RESIDENTIAL PROPERTIES IN THE DEVELOPMENT 發展項目的住宅物業的樓面平面圖

5/F - 6/F Floor Plan 5樓 - 6樓平面圖



Each Residential Property 每個住宅物業	Flat 室 Floor 樓層	A	B	C	D
Floor to Floor Height (mm) 層與層之間的高度 (毫米)	5/F-6/F 5樓-6樓	3150	3150	3150	3150
Thickness of Floor Slab (excluding plaster) (mm) 樓板 (不包括灰泥) 的厚度 (毫米)		150	175	150	225

Notes: The dimensions in floor plans are all structural dimensions in millimeter.
備註：平面圖所列的數字為以毫米標示之建築結構尺寸。

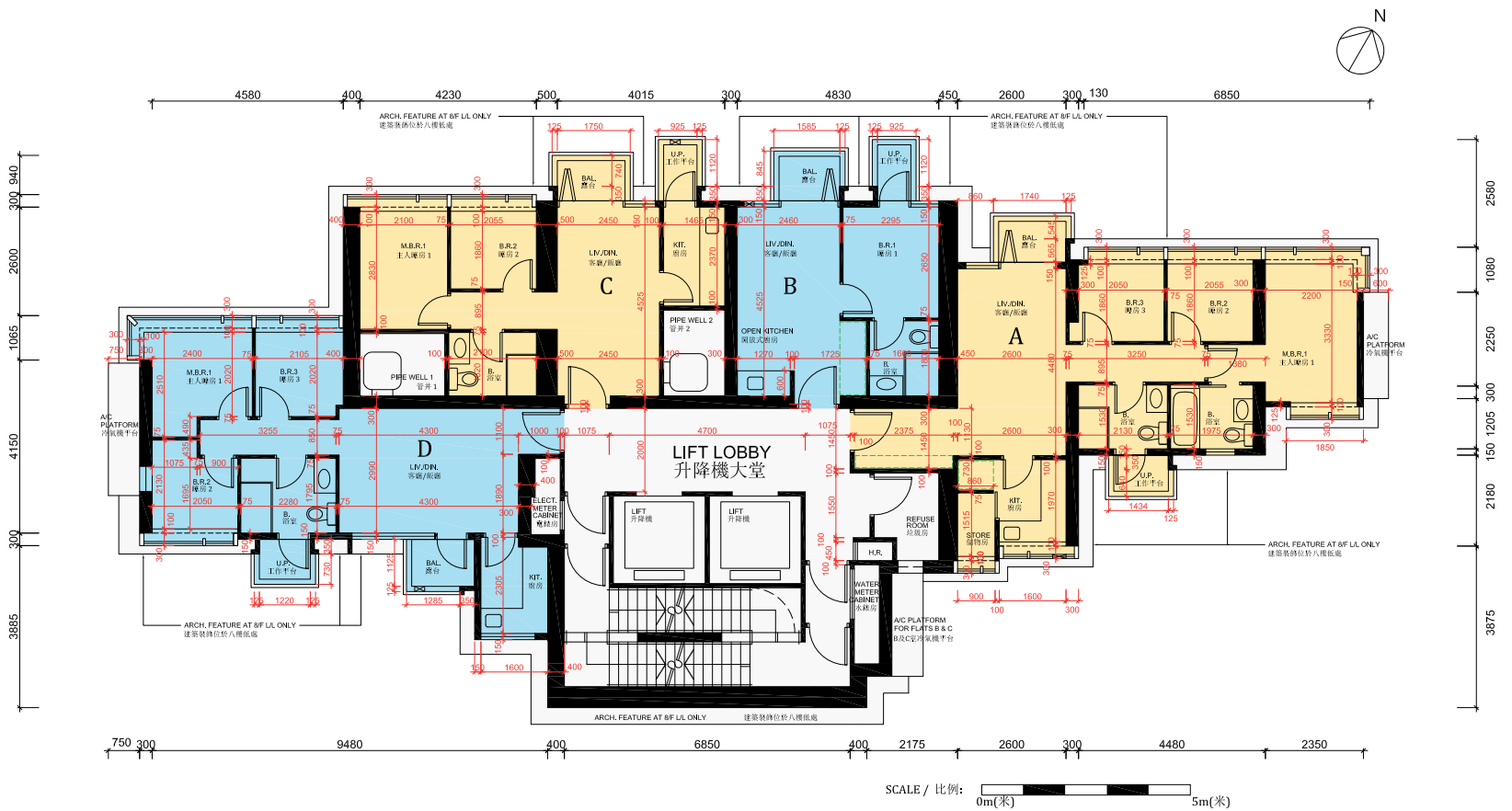
The internal areas of the residential properties on the upper floors will generally be slightly larger than those on the lower floors because of the reducing thickness of the structural walls on the upper floors.
因住宅物業的較高樓層的結構牆的厚度遞減，較高樓層的內部面積，一般比較低樓層的內部面積稍大。

Please refer to page 15 of this sales brochure for the remarks and legends of the terms and abbreviations for the floor plans of residential properties.
請參閱本售樓說明書第 15 頁為住宅物業樓面平面圖而設之備註及名詞及簡稱的圖例。

10 FLOOR PLANS OF RESIDENTIAL PROPERTIES IN THE DEVELOPMENT

發展項目的住宅物業的樓面平面圖

8/F - 11/F Floor Plan 8樓 - 11樓



Each Residential Property 每個住宅物業	Flat 室				
	Floor 樓層	A	B	C	D
Floor to Floor Height (mm) 層與層之間的高度 (毫米)	8/F-10/F 8樓-10樓	3150	3150	3150	3150
Thickness of Floor Slab (excluding plaster) (mm) 樓板 (不包括灰泥) 的厚度 (毫米)		150	175	150	150

Each Residential Property 每個住宅物業	Flat 室				
	Floor 樓層	A	B	C	D
Floor to Floor Height (mm) 層與層之間的高度 (毫米)	11/F 11樓	3150	3150	3150	2825, 3150
Thickness of Floor Slab (excluding plaster) (mm) 樓板 (不包括灰泥) 的厚度 (毫米)		150	175	150	150

Notes: The dimensions in floor plans are all structural dimensions in millimeter.
備註：平面圖所列的數字為以毫米標示之建築結構尺寸。

The internal areas of the residential properties on the upper floors will generally be slightly larger than those on the lower floors because of the reducing thickness of the structural walls on the upper floors.
因住宅物業的較高樓層的結構牆的厚度遞減，較高樓層的內部面積，一般比較低樓層的內部面積稍大。

Please refer to page 15 of this sales brochure for the remarks and legends of the terms and abbreviations for the floor plans of residential properties.
請參閱本售樓說明書第 15 頁為住宅物業樓面平面圖而設之備註及名詞及簡稱的圖例。