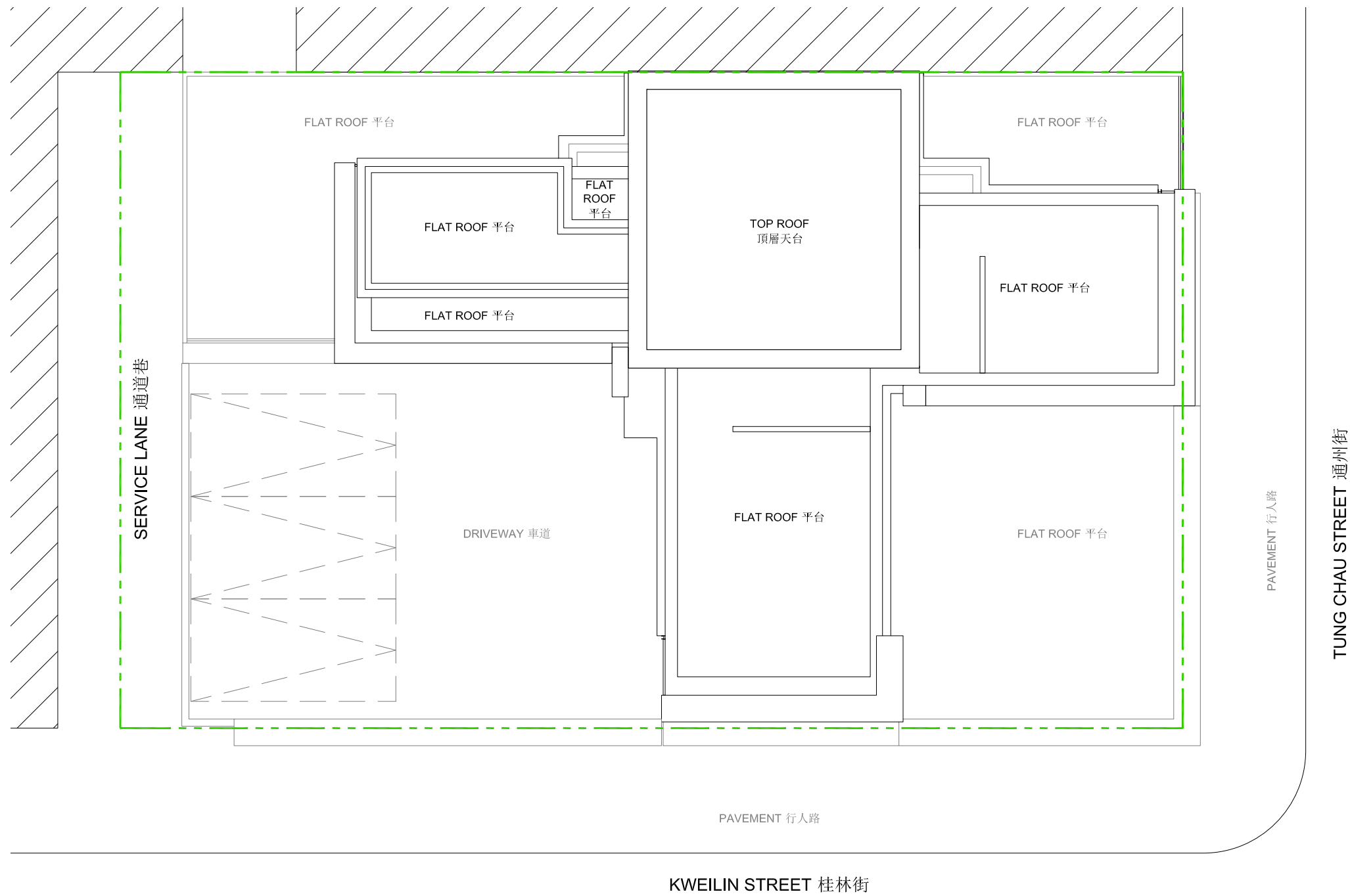


LAYOUT PLAN OF THE DEVELOPMENT

發展項目的布局圖



Legend 圖例

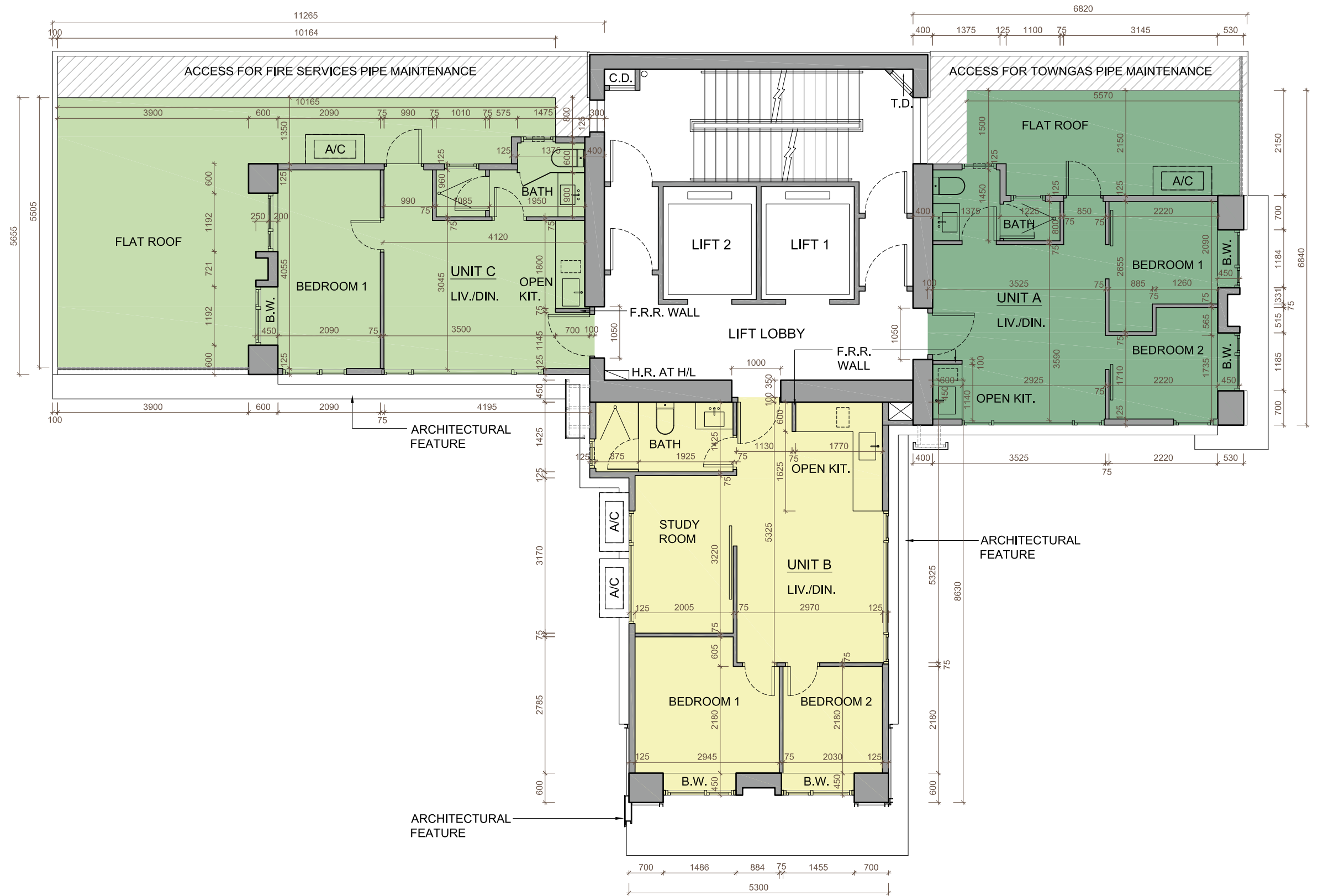
-  DEVELOPMENT SITE BOUNDARY 發展項目邊界線

Scale 比例尺
0 5M / 米



FLOOR PLANS OF RESIDENTIAL PROPERTIES IN THE DEVELOPMENT

發展項目的住宅物業的樓面平面圖



5/F FLOOR PLAN
5樓平面圖

Scale 比例尺



FLOOR PLANS OF RESIDENTIAL PROPERTIES IN THE DEVELOPMENT

發展項目的住宅物業的樓面平面圖

Legend of terms and abbreviations used on floor plans

樓面平面圖中所使用名詞之簡稱之圖例

 ACCESS FOR TOWN GAS PIPE MAINTENANCE = 預設為維修煤氣管道的通道

 ACCESS FOR FIRE SERVICES PIPE MAINTENANCE = 預設為維修消防管道的通道

A/C = Air-conditioning Unit = 冷氣機

ARCHITECTURAL FEATURE = 建築裝飾

BATH = Bathroom = 浴室

BEDROOM 1 = 睡房 1

BEDROOM 2 = 睡房 2

B.W. = Bay Window = 窗台

C.D. = Cable Duct = 電線槽

FLAT ROOF = 平台

F.R.R. WALL = Fire Resistance Rating Wall = 防火牆

H.R. AT H/L = Hose Reel at High Level = 設於高位的消防喉轆

LIFT 1 = 升降機 1

LIFT 2 = 升降機 2

LIFT LOBBY = 升降機大堂

LIV./DIN. = Living /Dining Room = 客飯廳

OPEN KIT. = Open Kitchen = 開放式廚房

STUDY ROOM = 書房

T.D. = Telephone Duct = 電話線槽

UNIT A = 單位A

UNIT B = 單位B

UNIT C = 單位C

1. The dimensions in the floor plans are all structural dimensions in millimeters.
2. The floor-to-floor height of each residential property as provided in the approved building plans for the Development is 2800 mm*.
3. The thickness of the floor slabs (excluding plaster) of each residential property as provided in the approved building plans for the Development is:
Unit A: 150mm and 210mm
Unit B: 125mm
Unit C: 170mm
4. The internal areas of the residential properties on the upper floors will generally be slightly larger than those on the lower floors because of reducing thickness of the structure walls on the upper floors.
5. The indications of fittings such as sinks, toilet bowls, shower heads and wash basins, etc. shown on the floor plans are indications of their approximate locations only and not indications of their actual size, design or shapes.
6. There may be architectural features and exposed pipes and/ or pipe covers on external walls.
7. There may be communal pipes and/ or mechanical and electrical services within flat roofs of some residential units.

1. 樓面平面圖所列之尺寸數字為以毫米標示之建築結構尺寸。
2. 按發展項目的經批准的建築圖則，每個住宅物業的層與層之間的高度為2800毫米*。
3. 按發展項目的經批准的建築圖則，每個住宅物業的樓板（不包括灰泥）的厚度為：
單位A: 150毫米及210毫米
單位B: 125毫米
單位C: 170毫米
4. 因住宅物業的較高樓層的結構牆的厚度遞減，較高樓層的內部面積，一般比較低樓層的內部面積稍大。
5. 樓面平面圖所示之裝置如洗滌盤、浴缸、坐廁、花灑龍頭及洗手盆只供展示其大約位置而非展示其實際大小、設計或形狀。
6. 外牆或設有建築裝飾及外露喉管道及/或喉管蓋。
7. 部分住宅單位之平台內或裝有公用喉管及/或機電設備。

* Floor-to-floor height refers to the height between the top surface of the structural slab of a floor and the top surface of the structural slab of its immediate upper floor.

* 層與層之間的高度指該樓層之石屎地台面與上層石屎地台面之高度距離。

FLOOR PLANS OF RESIDENTIAL PROPERTIES IN THE DEVELOPMENT

發展項目的住宅物業的樓面平面圖



6/F FLOOR PLAN
6樓平面圖

Scale 比例尺



FLOOR PLANS OF RESIDENTIAL PROPERTIES IN THE DEVELOPMENT

發展項目的住宅物業的樓面平面圖

Legend of terms and abbreviations used on floor plans

樓面平面圖中所使用名詞之簡稱之圖例

A/C = Air-conditioning Unit = 冷氣機

ARCHITECTURAL FEATURE = 建築裝飾

BEDROOM 1 = 睡房 1

BEDROOM 2 = 睡房 2

B.W. = Bay Window = 窗台

C.D. = Cable Duct = 電線槽

F.R.R. WALL. = Fire Resistance Rating Wall = 防火牆

H.R. AT H/L = Hose Reel at High Level = 設於高位的消防喉轆

LIFT 1 = 升降機 1

LIFT 2 = 升降機 2

LIFT LOBBY = 升降機大堂

LIV./DIN. = Living /Dining Room = 客飯廳

OPEN KIT. = Open Kitchen = 開放式廚房

STUDY ROOM = 書房

STORE = Store Room = 儲物室

T.D. = Telephone Duct = 電話線槽

UNIT A = 單位A

UNIT B = 單位B

UNIT C = 單位C

1. The dimensions in the floor plans are all structural dimensions in millimeters.
2. The floor-to-floor height of each residential property as provided in the approved building plans for the Development is 2800 mm*.
3. The thickness of the floor slabs (excluding plaster) of each residential property as provided in the approved building plans for the Development is 125mm and 150mm.
4. The internal areas of the residential properties on the upper floors will generally be slightly larger than those on the lower floors because of reducing thickness of the structure walls on the upper floors.
5. The indications of fittings such as sinks, toilet bowls, shower heads and wash basins, etc. shown on the floor plans are indications of their approximate locations only and not indications of their actual size, design or shapes.
6. There may be architectural features and exposed pipes and/ or pipe covers on external walls.
7. There may be communal pipes and/ or mechanical and electrical services within flat roofs of some residential units.

1. 樓面平面圖所列之尺寸數字為以毫米標示之建築結構尺寸。
2. 按發展項目的經批准的建築圖則，每個住宅物業的層與層之間的高度為2800毫米*。
3. 按發展項目的經批准的建築圖則，每個住宅物業的樓板（不包括灰泥）的厚度為125毫米及150毫米。
4. 因住宅物業的較高樓層的結構牆的厚度遞減，較高樓層的內部面積，一般比較低樓層的內部面積稍大。
5. 樓面平面圖所示之裝置如洗滌盤、浴缸、坐廁、花灑龍頭及洗手盆只供展示其大約位置而非展示其實際大小、設計或形狀。
6. 外牆或設有建築裝飾及外露喉管道及/或喉管蓋。
7. 部分住宅單位之平台內或裝有公用喉管及/或機電設備。

* Floor-to-floor height refers to the height between the top surface of the structural slab of a floor and the top surface of the structural slab of its immediate upper floor.

* 層與層之間的高度指該樓層之石屎地台面與上層石屎地台面之高度距離。

FLOOR PLANS OF RESIDENTIAL PROPERTIES IN THE DEVELOPMENT

發展項目的住宅物業的樓面平面圖



7/F-15/F FLOOR PLAN
7樓-15樓平面圖

Scale 比例尺



FLOOR PLANS OF RESIDENTIAL PROPERTIES IN THE DEVELOPMENT

發展項目的住宅物業的樓面平面圖

Legend of terms and abbreviations used on floor plans

樓面平面圖中所使用名詞之簡稱之圖例

A/C = Air-conditioning Unit = 冷氣機

ARCHITECTURAL FEATURE = 建築裝飾

BEDROOM 1 = 睡房 1

BEDROOM 2 = 睡房 2

B.W. = Bay Window = 窗台

C.D. = Cable Duct = 電線槽

F.R.R. WALL. = Fire Resistance Rating Wall = 防火牆

H.R. AT H/L = Hose Reel at High Level = 設於高位的消防喉轆

LIFT 1 = 升降機 1

LIFT 2 = 升降機 2

LIFT LOBBY = 升降機大堂

LIV./DIN. = Living /Dining Room = 客飯廳

OPEN KIT. = Open Kitchen = 開放式廚房

STUDY ROOM = 書房

T.D. = Telephone Duct = 電話線槽

UNIT A = 單位A

UNIT B = 單位B

UNIT C = 單位C

1. The dimensions in the floor plans are all structural dimensions in millimeters.
2. The floor-to-floor height of each residential property as provided in the approved building plans for the Development is 2800 mm*.
3. The thickness of the floor slabs (excluding plaster) of each residential property as provided in the approved building plans for the Development is 125mm and 150mm.
4. The internal areas of the residential properties on the upper floors will generally be slightly larger than those on the lower floors because of reducing thickness of the structure walls on the upper floors.
5. The indications of fittings such as sinks, toilet bowls, shower heads and wash basins, etc. shown on the floor plans are indications of their approximate locations only and not indications of their actual size, design or shapes.
6. There may be architectural features and exposed pipes and/ or pipe covers on external walls.
7. There may be communal pipes and/ or mechanical and electrical services within flat roofs of some residential units.

1. 樓面平面圖之尺寸所列數字為以毫米標示之建築結構尺寸。
2. 按發展項目的經批准的建築圖則，每個住宅物業的層與層之間的高度為2800毫米*。
3. 按發展項目的經批准的建築圖則，每個住宅物業的樓板（不包括灰泥）的厚度為125毫米及150毫米。
4. 因住宅物業的較高樓層的結構牆的厚度遞減，較高樓層的內部面積，一般比較低樓層的內部面積稍大。
5. 樓面平面圖所示之裝置如洗滌盤、浴缸、坐廁、花灑龍頭及洗手盆只供展示其大約位置而非展示其實際大小、設計或形狀。
6. 外牆或設有建築裝飾及外露喉管道及/或喉管蓋。
7. 部分住宅單位之平台內或裝有公用喉管及/或機電設備。

* Floor-to-floor height refers to the height between the top surface of the structural slab of a floor and the top surface of the structural slab of its immediate upper floor.

* 層與層之間的高度指該樓層之石屎地台面與上層石屎地台面之高度距離。

FLOOR PLANS OF RESIDENTIAL PROPERTIES IN THE DEVELOPMENT

發展項目的住宅物業的樓面平面圖



16/F-24/F FLOOR PLAN
16樓-24樓平面圖

Scale 比例尺



FLOOR PLANS OF RESIDENTIAL PROPERTIES IN THE DEVELOPMENT

發展項目的住宅物業的樓面平面圖

Legend of terms and abbreviations used on floor plans

樓面平面圖中所使用名詞之簡稱之圖例

A/C = Air-conditioning Unit = 冷氣機

ARCHITECTURAL FEATURE = 建築裝飾

BEDROOM 1 = 睡房 1

BEDROOM 2 = 睡房 2

B.W. = Bay Window = 窗台

C.D. = Cable Duct = 電線槽

F.R.R. WALL. = Fire Resistance Rating Wall = 防火牆

H.R. AT H/L = Hose Reel at High Level = 設於高位的消防喉轆

LIFT 1 = 升降機 1

LIFT 2 = 升降機 2

LIFT LOBBY = 升降機大堂

LIV./DIN. = Living /Dining Room = 客飯廳

OPEN KIT. = Open Kitchen = 開放式廚房

STUDY ROOM = 書房

T.D. = Telephone Duct = 電話線槽

UNIT A = 單位A

UNIT B = 單位B

UNIT C = 單位C

1. The dimensions in the floor plans are all structural dimensions in millimeters.
2. The floor-to-floor height of each residential property as provided in the approved building plans for the Development is 2800 mm*.
3. The thickness of the floor slabs (excluding plaster) of each residential property as provided in the approved building plans for the Development is 125mm and 150mm.
4. The internal areas of the residential properties on the upper floors will generally be slightly larger than those on the lower floors because of reducing thickness of the structure walls on the upper floors.
5. The indications of fittings such as sinks, toilet bowls, shower heads and wash basins, etc. shown on the floor plans are indications of their approximate locations only and not indications of their actual size, design or shapes.
6. There may be architectural features and exposed pipes and/ or pipe covers on external walls.
7. There may be communal pipes and/ or mechanical and electrical services within flat roofs of some residential units.

1. 樓面平面圖之尺寸所列數字為以毫米標示之建築結構尺寸。
2. 按發展項目的經批准的建築圖則，每個住宅物業的層與層之間的高度為2800毫米*。
3. 按發展項目的經批准的建築圖則，每個住宅物業的樓板（不包括灰泥）的厚度為125毫米及150毫米。
4. 因住宅物業的較高樓層的結構牆的厚度遞減，較高樓層的內部面積，一般比較低樓層的內部面積稍大。
5. 樓面平面圖所示之裝置如洗滌盤、浴缸、坐廁、花灑龍頭及洗手盆只供展示其大約位置而非展示其實際大小、設計或形狀。
6. 外牆或設有建築裝飾及外露喉管道及/或喉管蓋。
7. 部分住宅單位之平台內或裝有公用喉管及/或機電設備。

* Floor-to-floor height refers to the height between the top surface of the structural slab of a floor and the top surface of the structural slab of its immediate upper floor.

* 層與層之間的高度指該樓層之石屎地台面與上層石屎地台面之高度距離。

FLOOR PLANS OF RESIDENTIAL PROPERTIES IN THE DEVELOPMENT

發展項目的住宅物業的樓面平面圖



25/F FLOOR PLAN
25樓平面圖

Scale 比例尺



FLOOR PLANS OF RESIDENTIAL PROPERTIES IN THE DEVELOPMENT

發展項目的住宅物業的樓面平面圖

Legend of terms and abbreviations used on floor plans

樓面平面圖中所使用名詞之簡稱之圖例

A/C = Air-conditioning Unit = 冷氣機

ARCHITECTURAL FEATURE = 建築裝飾

BEDROOM 1 = 睡房 1

BEDROOM 2 = 睡房 2

B.W. = Bay Window = 窗台

C.D. = Cable Duct = 電線槽

F.R.R. WALL. = Fire Resistance Rating Wall = 防火牆

H.R. AT H/L = Hose Reel at High Level = 設於高位的消防喉轆

LIFT 1 = 升降機 1

LIFT 2 = 升降機 2

LIFT LOBBY = 升降機大堂

LIV./DIN. = Living /Dining Room = 客飯廳

OPEN KIT. = Open Kitchen = 開放式廚房

STUDY ROOM = 書房

T.D. = Telephone Duct = 電話線槽

UNIT A = 單位A

UNIT B = 單位B

UNIT C = 單位C

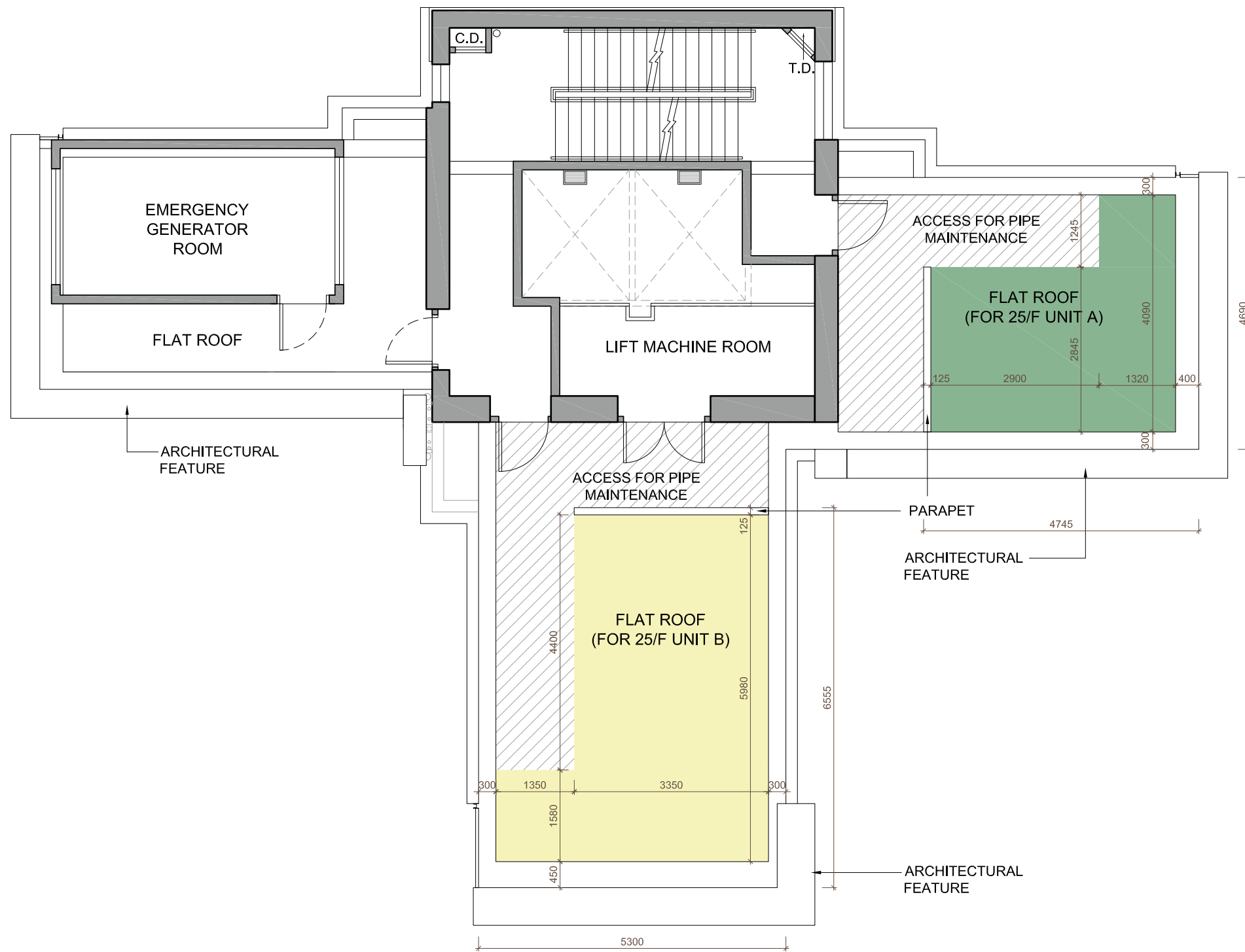
1. The dimensions in the floor plans are all structural dimensions in millimeters.
2. The floor-to-floor height of each residential property as provided in the approved building plans for the Development is:
Unit A & Unit B: 2800mm*
Unit C: 2800mm* and 2975mm*
3. The thickness of the floor slabs (excluding plaster) of each residential property as provided in the approved building plans for the Development is 125mm and 150mm.
4. The internal areas of the residential properties on the upper floors will generally be slightly larger than those on the lower floors because of reducing thickness of the structure walls on the upper floors.
5. The indications of fittings such as sinks, toilet bowls, shower heads and wash basins, etc. shown on the floor plans are indications of their approximate locations only and not indications of their actual size, design or shapes.
6. There may be architectural features and exposed pipes and/ or pipe covers on external walls.
7. There may be communal pipes and/ or mechanical and electrical services within flat roofs of some residential units.

1. 樓面平面圖之尺寸所列數字為以毫米標示之建築結構尺寸。
2. 按發展項目的經批准的建築圖則，每個住宅物業的層與層之間的高度為：
單位A及單位B: 2800毫米*
單位C: 2800毫米*及2975毫米*
3. 按發展項目的經批准的建築圖則，每個住宅物業的樓板（不包括灰泥）的厚度為125毫米及150毫米。
4. 因住宅物業的較上樓層的結構牆的厚度遞減，較高樓層的內部面積，一般比較低樓層的內部面積稍大。
5. 樓面平面圖所示之裝置如洗滌盤、浴缸、坐廁、花灑龍頭及洗手盆只供展示其大約位置而非展示其實際大小、設計或形狀。
6. 外牆或設有建築裝飾及外露喉管道及/或喉管蓋。
7. 部分住宅單位之平台內或裝有公用喉管及/或機電設備。

* Floor-to-floor height refers to the height between the top surface of the structural slab of a floor and the top surface of the structural slab of its immediate upper floor.

* 層與層之間的高度指該樓層之石屎地台面與上層石屎地台面之高度距離。

FLOOR PLANS OF RESIDENTIAL PROPERTIES IN THE DEVELOPMENT
發展項目的住宅物業的樓面平面圖



ROOF FLOOR PLAN
天台平面圖

Scale 比例尺

0

5M / 米

