

10 FLOOR PLANS OF RESIDENTIAL PROPERTIES IN THE DEVELOPMENT

發展項目的住宅物業的樓面平面圖

The remarks and legends on this page apply to all pages of "Floor plans of residential properties in the Development".
在本頁上之備註和圖例適用於全部的「發展項目的住宅物業的樓面平面圖」頁數。

Legends of the Floor Plans 樓面平面圖圖例

A/C	AIR CONDITIONER	冷氣機
BAL.	BALCONY	露台
BATH	BATHROOM	浴室
BR.	BEDROOM	睡房
DN	DOWN	落
E.A.D.	EXHAUST AIR DUCT	排風管
E.M.R.	ELECTRICAL METER ROOM	電錶房
F.S.	FIRE SERVICES	消防
H.R.	HOSE REEL	消防喉轆
KIT.	KITCHEN	廚房
LAV.	LAVATORY	洗手間
LIV. / DIN.	LIVING / DINING	客廳 / 飯廳
M.BATH	MASTER BATHROOM	主浴室
M.BR.	MASTER BEDROOM	主人房
O.KIT.	OPEN KITCHEN	開放式廚房
P.D.	PIPE DUCT	管槽
R.W.P.	RAIN WATER PIPE	雨水管槽
RSMRR	REFUSE STORAGE AND MATERIAL RECOVERY ROOM	垃圾及物料回收室
U.P.	UTILITY PLATFORM	工作平台
W.M.C.	WATER METER CABINET	水錶箱

Notes:

- There are architectural features, metal grilles and/or exposed pipes on the external walls of some of the floors. For details, please refer to the latest approved building plans.
- Common pipes exposed and/or enclosed in cladding are located at/adjacent to the balcony and/or flat roof and/or air-conditioner platform and/or external wall of some residential units. For details, please refer to the latest approved building plans and/or approved drainage plans.
- There are sunken slabs (for mechanical & electrical services of residential units above) and/or ceiling bulkheads for the air-conditioning fittings and/or other mechanical & electrical services at some residential units.
- There are exposed pipes installed in some bathrooms.
- There are exposed pipes installed at the upper part of some flat roofs, utility platforms and balconies.
- Balconies and utility platforms are non-enclosed areas.
- Symbols of fittings and fitments shown in the floor plans such as bath tub, sink, water closet, shower, sink counter, etc. are prepared based on the latest approved building plans and are for indication of approximate location only.
- The dimensions of the floor plans are all structural dimensions in millimeter.

備註：

- 部分樓層外牆範圍設有建築裝飾、金屬格柵及/或外露喉管，詳細資料請參考最新批准的建築圖則。
- 部分住宅單位的露台及/或平台及/或空調機平台及/或外牆上/附近設有外露及/或外牆裝飾板內藏之公用喉管，詳細資料請參考最新批准的建築圖則及/或排水設施圖。
- 部分住宅單位天花有跌級樓板(用以安裝樓上住宅單位之機電設備)及/或假天花內裝置空調裝備及/或其他機電設備。
- 部分浴室內裝有外露喉管。
- 部分平台、工作平台及露台上方裝有外露喉管。
- 露台及工作平台為非封閉的地方。
- 樓面平面圖上所顯示的裝置及設備的圖標，如浴缸、洗滌盆、座廁、花灑、洗滌盆櫃等乃按最新的經批准的建築圖則繪製，只作示意大概位置之用途。
- 樓面平面圖所列之數字以毫米標示之建築結構尺寸。

10 FLOOR PLANS OF RESIDENTIAL PROPERTIES IN THE DEVELOPMENT

發展項目的住宅物業的樓面平面圖

5/F Floor Plan 5樓樓面平面圖



Note: The dimensions in the floor plans are all structural dimensions in millimetre.

備註：樓面平面圖之尺規所列數字為以毫米標示之建築結構尺寸。

10 FLOOR PLANS OF RESIDENTIAL PROPERTIES IN THE DEVELOPMENT

發展項目的住宅物業的樓面平面圖

5/F
5樓

Each residential property 每個住宅物業	Tower 大廈	Floor 樓層	A	B	C	D	E	F	G	Tower 大廈	Floor 樓層	A	B	C	D	E	F	G	H	J	K
The thickness of the floor slabs (excluding plaster) of each residential property (mm) 每個住宅物業的樓板的厚度 (不包括灰泥) (毫米)	East Wing 東翼	5/F 5樓	150	150, 175	150	150	150, 175	150, 175	150, 175	West Wing 西翼	5/F 5樓	150, 175	150, 175	150, 175	150	150, 175	150	150	150	150	150
The Floor-to-floor height (refers to the height between the top surface of the structural slab of a floor and the top surface of the structural slab of its immediate upper floor) of each residential property (mm) 每個住宅物業的層與層之間的高度 (指該樓層之石屎地台面與上一層之石屎地台面之高度距離) (毫米)			3325*, 3650*	3325*, 3650*	3325*, 3650*	3325*, 3650*	3350*, 3650*	3150, 3350*, 3650*	3150, 3350*, 3650*			3325*, 3650*	3150, 3275*, 3325*, 3650*	3150, 3275*, 3325*, 3650*	3150, 3325*, 3650*	3325*, 3650*	3325*, 3650*	3325*, 3650*	3325*, 3650*	3325*, 3650*	3325*, 3650*

The internal areas of the residential properties on the upper floors will generally be slightly larger than those on the lower floors because of the reducing thickness of the structural walls of the residential properties on the upper floors.

因住宅物業的較高樓層的結構牆的厚度遞減，較高樓層的內部面積，一般比較低樓層的內部面積稍大。

Please refer to page 21 of this sales brochure for the terms and abbreviations shown in the legends of the floor plan above and the explanatory notes that are applicable thereto.

以上樓面平面圖圖例中顯示之名詞及簡稱及其適用的附註，請參閱本售樓說明書第21頁。

Note: *Inclusive of the sunken depth of the electrical and mechanical zone on the floor of this floor (500mm)

備註：* 包括本層地台跌級機電層之跌級深度 (500毫米)。

10 FLOOR PLANS OF RESIDENTIAL PROPERTIES IN THE DEVELOPMENT

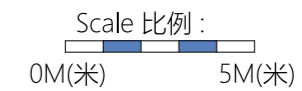
發展項目的住宅物業的樓面平面圖

6/F to 12/F, 15/F, 16/F Floor Plan
6樓至12樓、15樓、16樓樓面平面圖



Note:
The dimensions in the floor plans are all structural dimensions in millimetre.

備註：
樓面平面圖之尺規所列數字為以毫米標示之建築結構尺寸。



10 FLOOR PLANS OF RESIDENTIAL PROPERTIES IN THE DEVELOPMENT

發展項目的住宅物業的樓面平面圖

6/F to 12/F, 15/F, 16/F
6樓至12樓、15樓、16樓

Each residential property 每個住宅物業	Tower 大廈	Floor 樓層	A	B	C	D	E	F	G	Tower 大廈	Floor 樓層	A	B	C	D	E	F	G	H	J	K	
The thickness of the floor slabs (excluding plaster) of each residential property (mm) 每個住宅物業的樓板的厚度 (不包括灰泥)(毫米)	East Wing 東翼	6/F to 12/F and 15/F 6樓至12樓及15樓	150	150, 175	150	150	150, 175	150, 175	150, 175	West Wing 西翼	6/F to 12/F and 15/F 6樓至12樓及15樓	150, 175	150, 175	150, 175	150	150, 175	150	150	150	150	150	150
The Floor-to-floor height (refers to the height between the top surface of the structural slab of a floor and the top surface of the structural slab of its immediate upper floor) of each residential property (mm) 每個住宅物業的層與層之間的高度 (指該樓層之石屎地台面與上一層之石屎地台面之高度距離)(毫米)			3150	3150	3150	3150	3150	3150	3150			3150	3150	3150	3150	3150	3150	3150	3150	3150	3150	3150

The internal areas of the residential properties on the upper floors will generally be slightly larger than those on the lower floors because of the reducing thickness of the structural walls of the residential properties on the upper floors.

因住宅物業的較高樓層的結構牆的厚度遞減，較高樓層的內部面積，一般比較低樓層的內部面積稍大。

Please refer to page 21 of this sales brochure for the terms and abbreviations shown in the legends of the floor plan above and the explanatory notes that are applicable thereto.

以上樓面平面圖圖例中顯示之名詞及簡稱及其適用的附註，請參閱本售樓說明書第21頁。

Each residential property 每個住宅物業	Tower 大廈	Floor 樓層	A	B	C	D	E	F	G	Tower 大廈	Floor 樓層	A	B	C	D	E	F	G	H	J	K	
The thickness of the floor slabs (excluding plaster) of each residential property (mm) 每個住宅物業的樓板的厚度 (不包括灰泥)(毫米)	East Wing 東翼	16/F 16樓	150	150, 175	150	150	150, 175	150, 175	150, 175	West Wing 西翼	16/F 16樓	150, 175	150, 175	150, 175	150	150, 175	150	150	150	150	150	150
The Floor-to-floor height (refers to the height between the top surface of the structural slab of a floor and the top surface of the structural slab of its immediate upper floor) of each residential property (mm) 每個住宅物業的層與層之間的高度 (指該樓層之石屎地台面與上一層之石屎地台面之高度距離)(毫米)			3150	3150	2825, 3150, 3475*	3150, 3475*	3150	3150	3150			3150	3150	3150	3150	3150	3150	3150	3150	3150	2825, 3150, 3475*	3150, 3475*

The internal areas of the residential properties on the upper floors will generally be slightly larger than those on the lower floors because of the reducing thickness of the structural walls of the residential properties on the upper floors.

因住宅物業的較高樓層的結構牆的厚度遞減，較高樓層的內部面積，一般比較低樓層的內部面積稍大。

Note: *Inclusive of the sunken depth of the electrical and mechanical zone on the floor of this floor (500mm)

備註：* 包括本層地台跌級機電層之跌級深度 (500毫米)。

Please refer to page 21 of this sales brochure for the terms and abbreviations shown in the legends of the floor plan above and the explanatory notes that are applicable thereto.

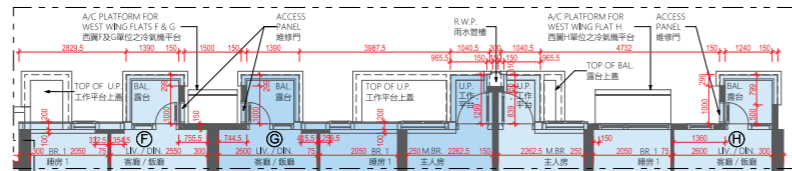
以上樓面平面圖圖例中顯示之名詞及簡稱及其適用的附註，請參閱本售樓說明書第21頁。

10 FLOOR PLANS OF RESIDENTIAL PROPERTIES IN THE DEVELOPMENT

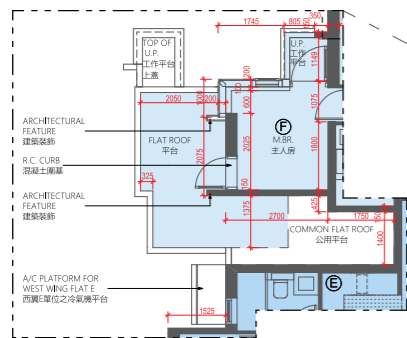
發展項目的住宅物業的樓面平面圖

17/F to 23/F, 25/F to 33/F, 35/F Floor Plan
17樓至23樓、25樓至33樓、35樓樓面平面圖

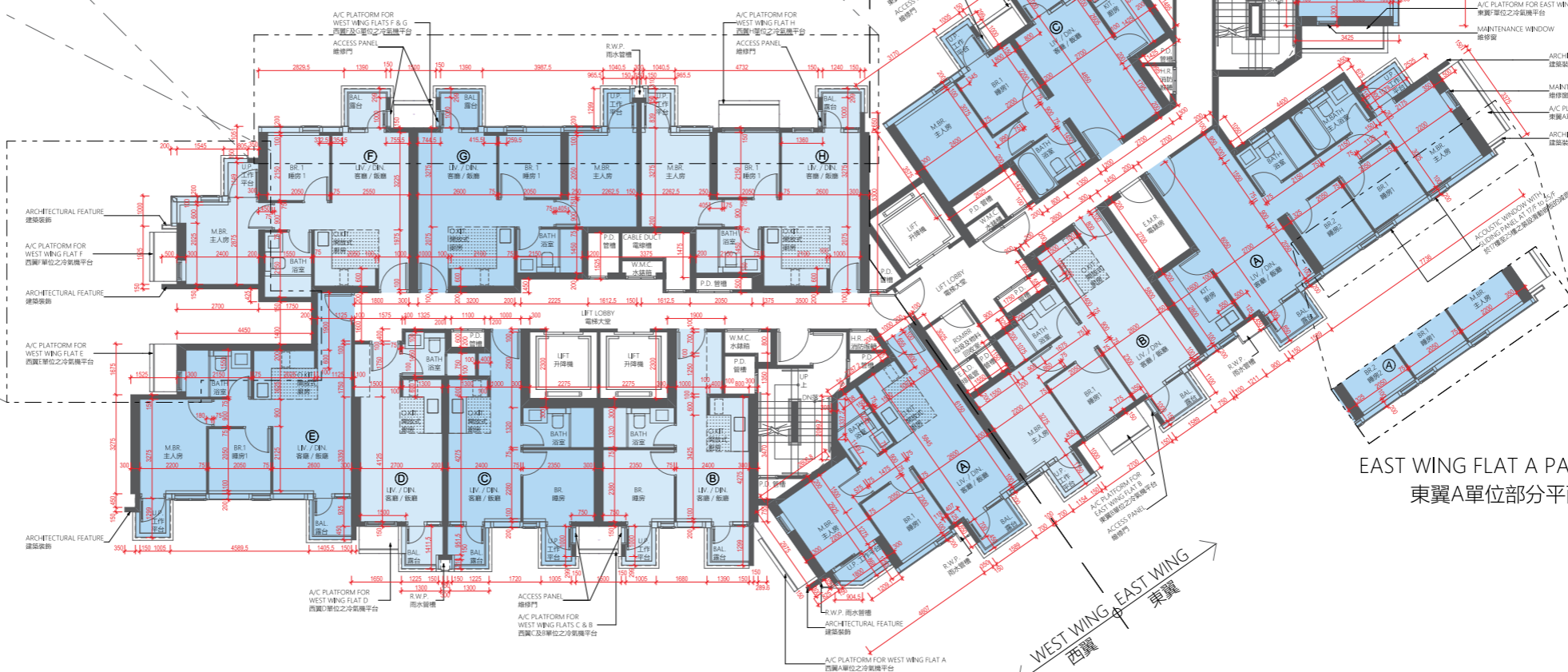
EAST WING FLAT D PART PLAN (28/F to 35/F)
東翼D單位部分平面圖 (28樓至35樓)



WEST WING FLATS F, G & H PART PLAN (17/F)
西翼F,G及H單位部分平面圖 (17樓)



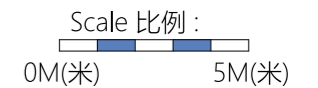
WEST WING FLATS E & F PART PLAN (17/F)
西翼E及F單位部分平面圖 (17樓)



EAST WING FLAT A PART PLAN (26/F to 35/F)
東翼A單位部分平面圖 (26樓至35樓)

Note:
The dimensions in the floor plans are all structural dimensions in millimetre.

備註：
樓面平面圖之尺規所列數字為以毫米標示之建築結構尺寸。



10 FLOOR PLANS OF RESIDENTIAL PROPERTIES IN THE DEVELOPMENT

發展項目的住宅物業的樓面平面圖

17/F to 23/F, 25/F to 33/F, 35/F
17樓至23樓、25樓至33樓、35樓

Each residential property 每個住宅物業	Tower 大廈	Floor 樓層	A	B	C	D	E	F	Tower 大廈	Floor 樓層	A	B	C	D	E	F	G	H
The thickness of the floor slabs (excluding plaster) of each residential property (mm) 每個住宅物業的樓板的厚度 (不包括灰泥)(毫米)	East Wing 東翼	17/F 17樓	150	150, 175	150	150, 175	150, 175	150, 175	West Wing 西翼	17/F 17樓	150, 175	150, 175	150, 175	150	150, 175	150	150, 200	150
The Floor-to-floor height (refers to the height between the top surface of the structural slab of a floor and the top surface of the structural slab of its immediate upper floor) of each residential property (mm) 每個住宅物業的層與層之間的高度 (指該樓層之石屎地台面與上一層之石屎地台面之高度距離)(毫米)			3150	3150	3150	3150	3150	3150			3150	3150	3150	3150	3150	3150	3150	3150

The internal areas of the residential properties on the upper floors will generally be slightly larger than those on the lower floors because of the reducing thickness of the structural walls of the residential properties on the upper floors.

因住宅物業的較高樓層的結構牆的厚度遞減，較高樓層的內部面積，一般比較低樓層的內部面積稍大。

Please refer to page 21 of this sales brochure for the terms and abbreviations shown in the legends of the floor plan above and the explanatory notes that are applicable thereto.

以上樓面平面圖圖例中顯示之名詞及簡稱及其適用的附註，請參閱本售樓說明書第21頁。

Each residential property 每個住宅物業	Tower 大廈	Floor 樓層	A	B	C	D	E	F	Tower 大廈	Floor 樓層	A	B	C	D	E	F	G	H
The thickness of the floor slabs (excluding plaster) of each residential property (mm) 每個住宅物業的樓板的厚度 (不包括灰泥)(毫米)	East Wing 東翼	18/F to 23/F, 25/F to 35/F 18樓至23樓、 25樓至33樓	150	150, 175	150	150, 175	150, 175	150, 175	West Wing 西翼	18/F to 23/F, 25/F to 35/F 18樓至23樓、 25樓至33樓	150, 175	150, 175	150, 175	150	150, 175	150	150, 200	150
			3150	3150	3150	3150	3150	3150			3150	3150	3150	3150	3150	3150	3150	3150
The Floor-to-floor height (refers to the height between the top surface of the structural slab of a floor and the top surface of the structural slab of its immediate upper floor) of each residential property (mm) 每個住宅物業的層與層之間的高度 (指該樓層之石屎地台面與上一層之石屎地台面之高度距離)(毫米)	East Wing 東翼	35/F 35樓	150	150, 175	150	150, 175	150, 175	150, 175	West Wing 西翼	35/F 35樓	150, 175	200	200	200	200	150, 175, 200	150, 175, 200	150, 175
			3150	2850, 3150, 3475*	3150	3150	3150	3150			2825, 3150, 3475*	3150, 3475*, 3525*	2850, 3150, 3225*, 3475*, 3525*	3150, 3475*	3150, 3475*	3150, 3475*	3150, 3475*	2850, 3150, 3175*, 3475*

The internal areas of the residential properties on the upper floors will generally be slightly larger than those on the lower floors because of the reducing thickness of the structural walls of the residential properties on the upper floors.

因住宅物業的較高樓層的結構牆的厚度遞減，較高樓層的內部面積，一般比較低樓層的內部面積稍大。

Note: *Inclusive of the sunken depth of the electrical and mechanical zone on the floor of this floor (500mm)

備註：* 包括本層地台跌級機電層之跌級深度 (500毫米)。

Please refer to page 21 of this sales brochure for the terms and abbreviations shown in the legends of the floor plan above and the explanatory notes that are applicable thereto.

以上樓面平面圖圖例中顯示之名詞及簡稱及其適用的附註，請參閱本售樓說明書第21頁。

10 FLOOR PLANS OF RESIDENTIAL PROPERTIES IN THE DEVELOPMENT

發展項目的住宅物業的樓面平面圖

36/F Floor Plan 36樓樓面平面圖



Note: The dimensions in the floor plans are all structural dimensions in millimetre.

備註：樓面平面圖之尺規所列數字為以毫米標示之建築結構尺寸。

10 FLOOR PLANS OF RESIDENTIAL PROPERTIES IN THE DEVELOPMENT

發展項目的住宅物業的樓面平面圖

36/F
36樓

Each residential property 每個住宅物業	Tower 大廈	Floor 樓層	A	B	C	D	E	F
The thickness of the floor slabs (excluding plaster) of each residential property (mm) 每個住宅物業的樓板的厚度 (不包括灰泥)(毫米)	East Wing 東翼	36/F 36樓	150, 250	150, 250	150, 250	150, 225	150, 225	150, 225
The Floor-to-floor height (refers to the height between the top surface of the structural slab of a floor and the top surface of the structural slab of its immediate upper floor) of each residential property (mm) 每個住宅物業的層與層之間的高度(指該樓層之石屎地台面與上一層之石屎地台面之高度距離)(毫米)			3500, 3825*	3500, 3825*	3500, 3825*	3500, 3800*	3500, 3800*, 3825*	3500, 3825*

The internal areas of the residential properties on the upper floors will generally be slightly larger than those on the lower floors because of the reducing thickness of the structural walls of the residential properties on the upper floors.

因住宅物業的較高樓層的結構牆的厚度遞減，較高樓層的內部面積，一般比較低樓層的內部面積稍大。

Note: * Inclusive of the thickness of mass concrete fill on sunken slab.

備註：*包括跌級樓板上之混凝土填充層厚度。

Please refer to page 21 of this sales brochure for the terms and abbreviations shown in the legends of the floor plan above and the explanatory notes that are applicable thereto.

以上樓面平面圖圖例中顯示之名詞及簡稱及其適用的附註，請參閱本售樓說明書第21頁。