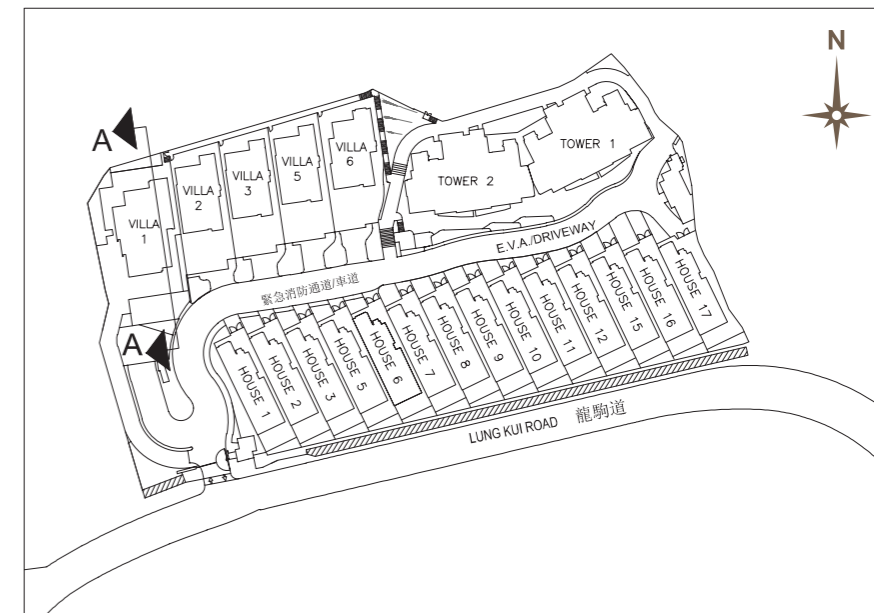


19 發展項目中的建築物的橫截面圖 CROSS-SECTION PLAN OF BUILDING IN THE DEVELOPMENT

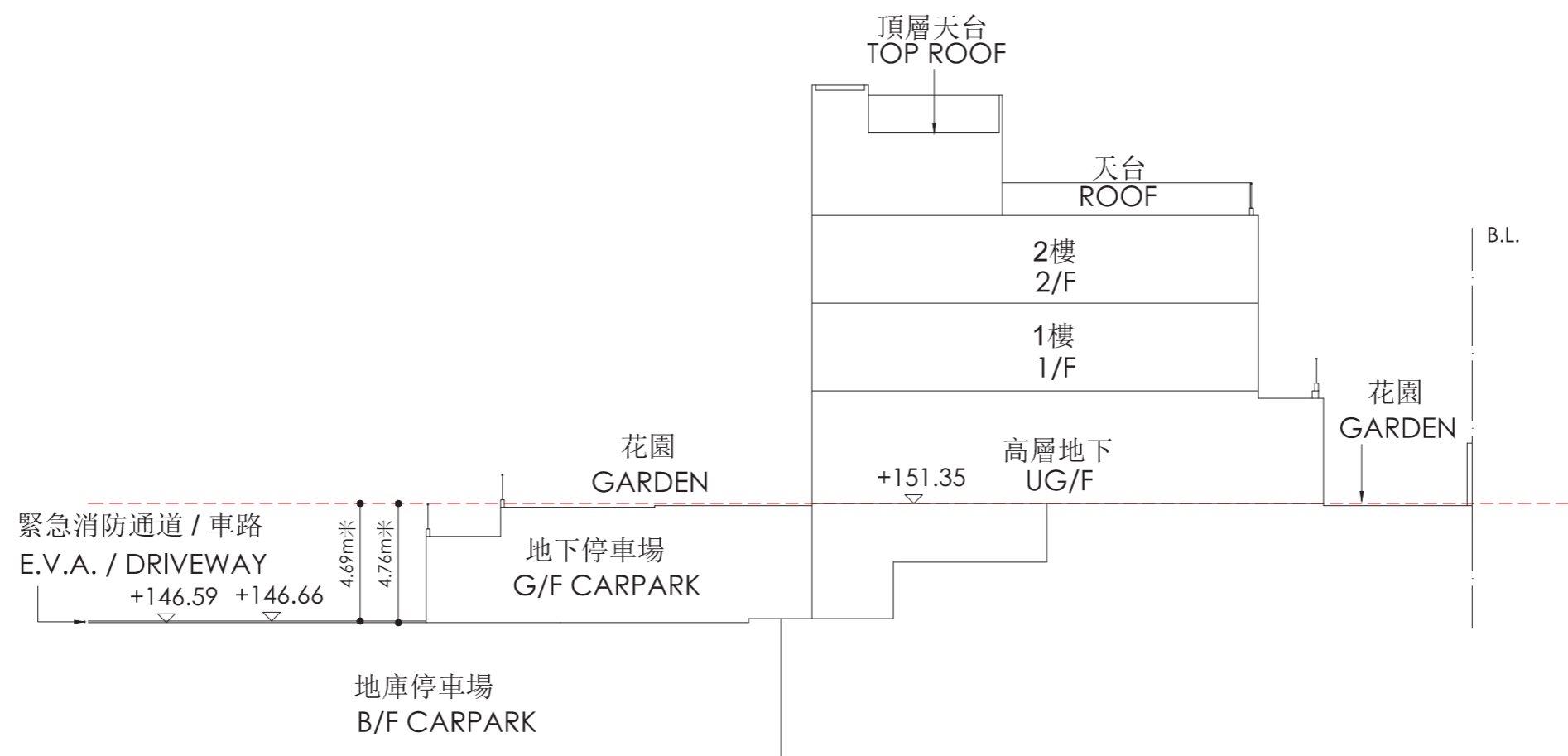
橫截面圖 A-A Cross-section plan A-A

- B.L. 發展項目的界線 Boundary of the Development
- 毗連建築物的一段緊急消防通道 / 車路為香港主水平基準以上146.59米至146.66米。
- ----- 虛線為最低住宅樓層水平。
- The part of Emergency Vehicle Access (E.V.A) / driveway adjacent to the building is 146.59 metres to 146.66 metres above Hong Kong Principal Datum (HKPD).
- ----- Dotted line denotes the lowest residential floor.

索引圖 Key Plan



別墅 1 VILLA 1

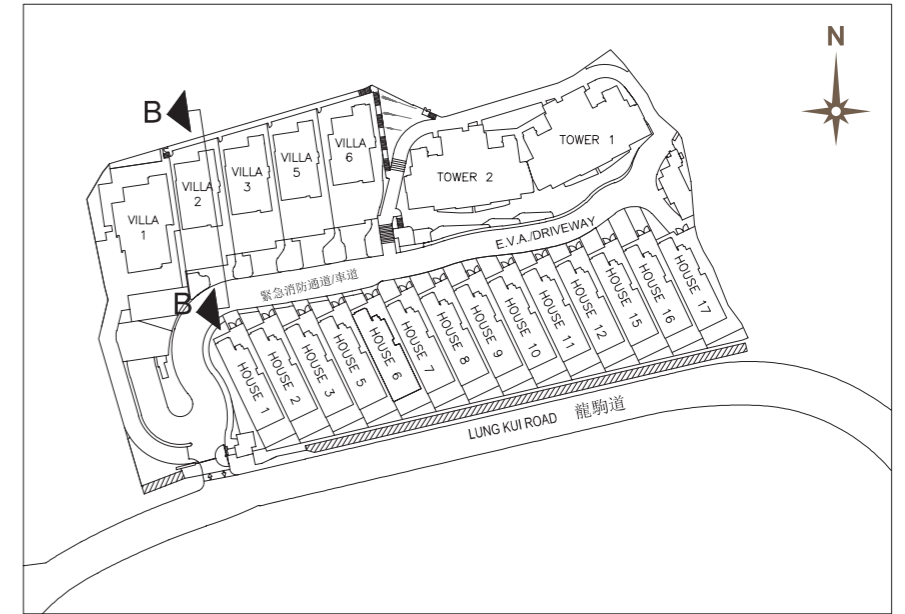


19 發展項目中的建築物的橫截面圖 CROSS-SECTION PLAN OF BUILDING IN THE DEVELOPMENT

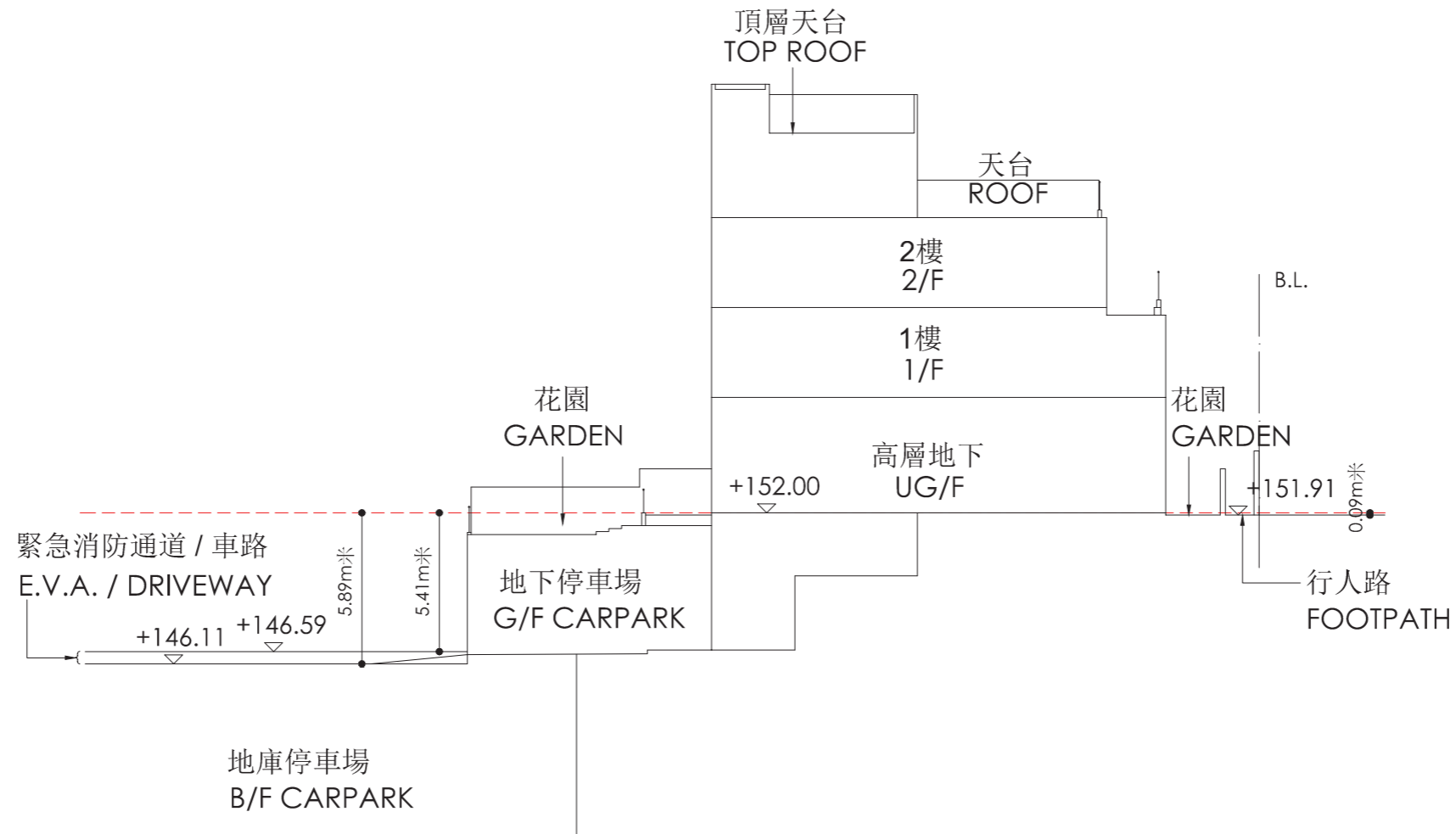
橫截面圖 B-B Cross-section plan B-B

- B.L. 發展項目的界線 Boundary of the Development
- 毗連建築物的一段緊急消防通道 / 車路為香港主水平基準以上146.11米至146.59米。
- 毗連建築物的一段行人路為香港主水平基準以上151.91米。
- - - - - 虛線為最低住宅樓層水平。
- The part of Emergency Vehicle Access (E.V.A) / driveway adjacent to the building is 146.11 metres to 146.59 metres above Hong Kong Principal Datum (HKPD).
- The part of footpath adjacent to the building is 151.91 metres above Hong Kong Principal Datum (HKPD).
- - - - - Dotted line denotes the lowest residential floor.

索引圖 Key Plan



別墅 2
VILLA 2



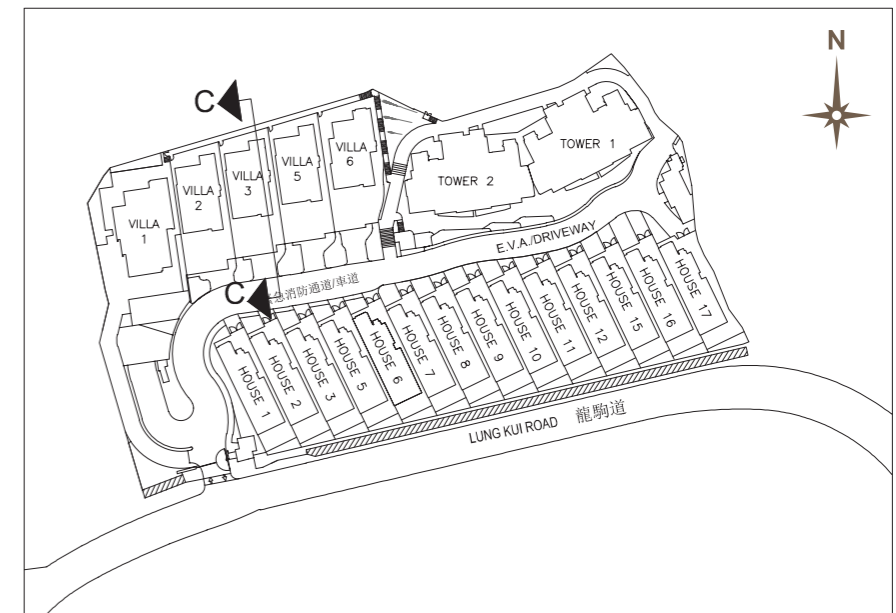
19 發展項目中的建築物的橫截面圖 CROSS-SECTION PLAN OF BUILDING IN THE DEVELOPMENT

橫截面圖 C-C

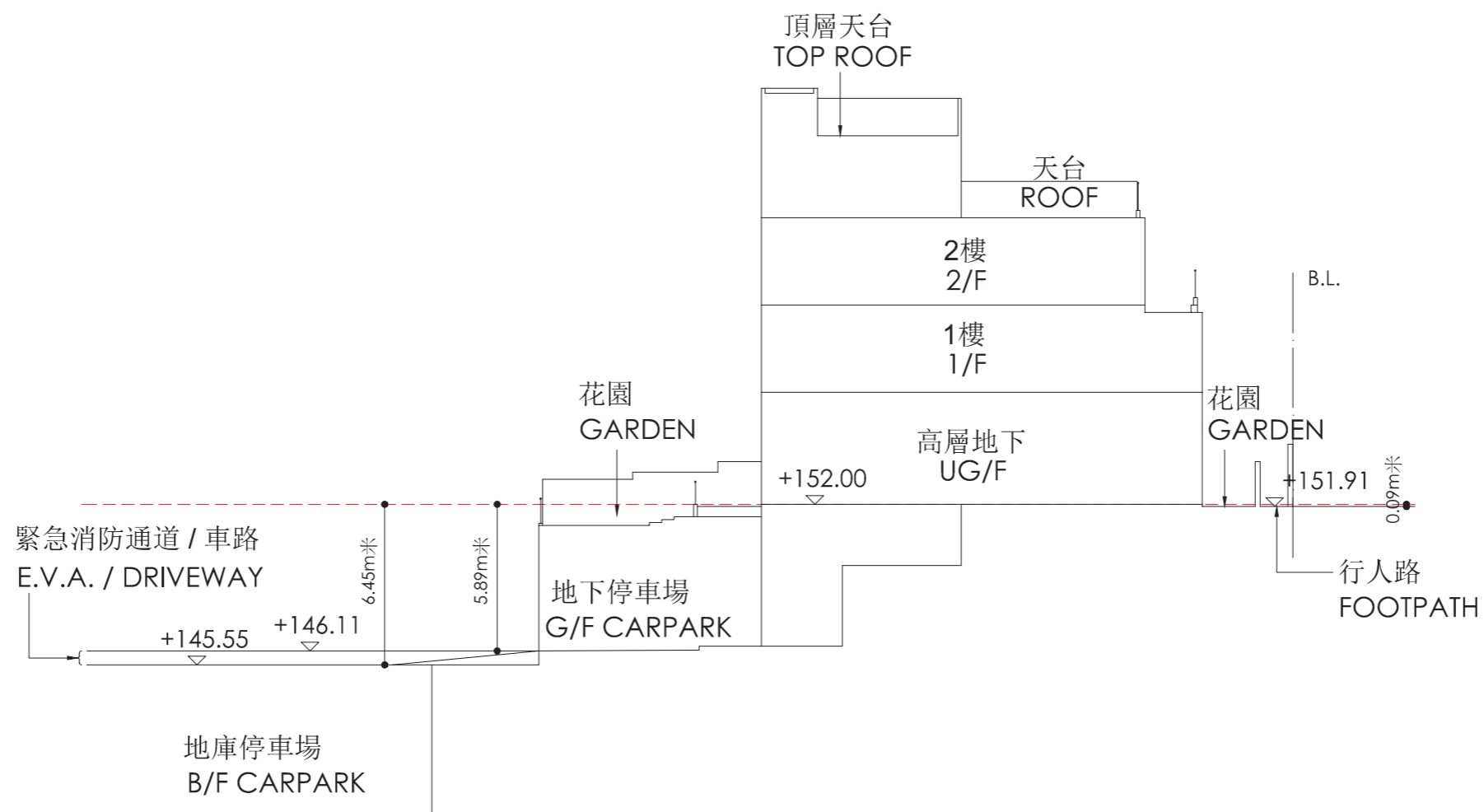
Cross-section plan C-C

- B.L. 發展項目的界線 Boundary of the Development
- 毗連建築物的一段緊急消防通道 / 車路為香港主水平基準以上145.55米至146.11米。
- 毗連建築物的一段行人路為香港主水平基準以上151.91米。
- ----- 虛線為最低住宅樓層水平。
- The part of Emergency Vehicle Access (E.V.A) / driveway adjacent to the building is 145.55 metres to 146.11 metres above Hong Kong Principal Datum (HKPD).
- The part of footpath adjacent to the building is 151.91 metres above Hong Kong Principal Datum (HKPD).
- ----- Dotted line denotes the lowest residential floor.

索引圖 Key Plan



別墅 3
VILLA 3



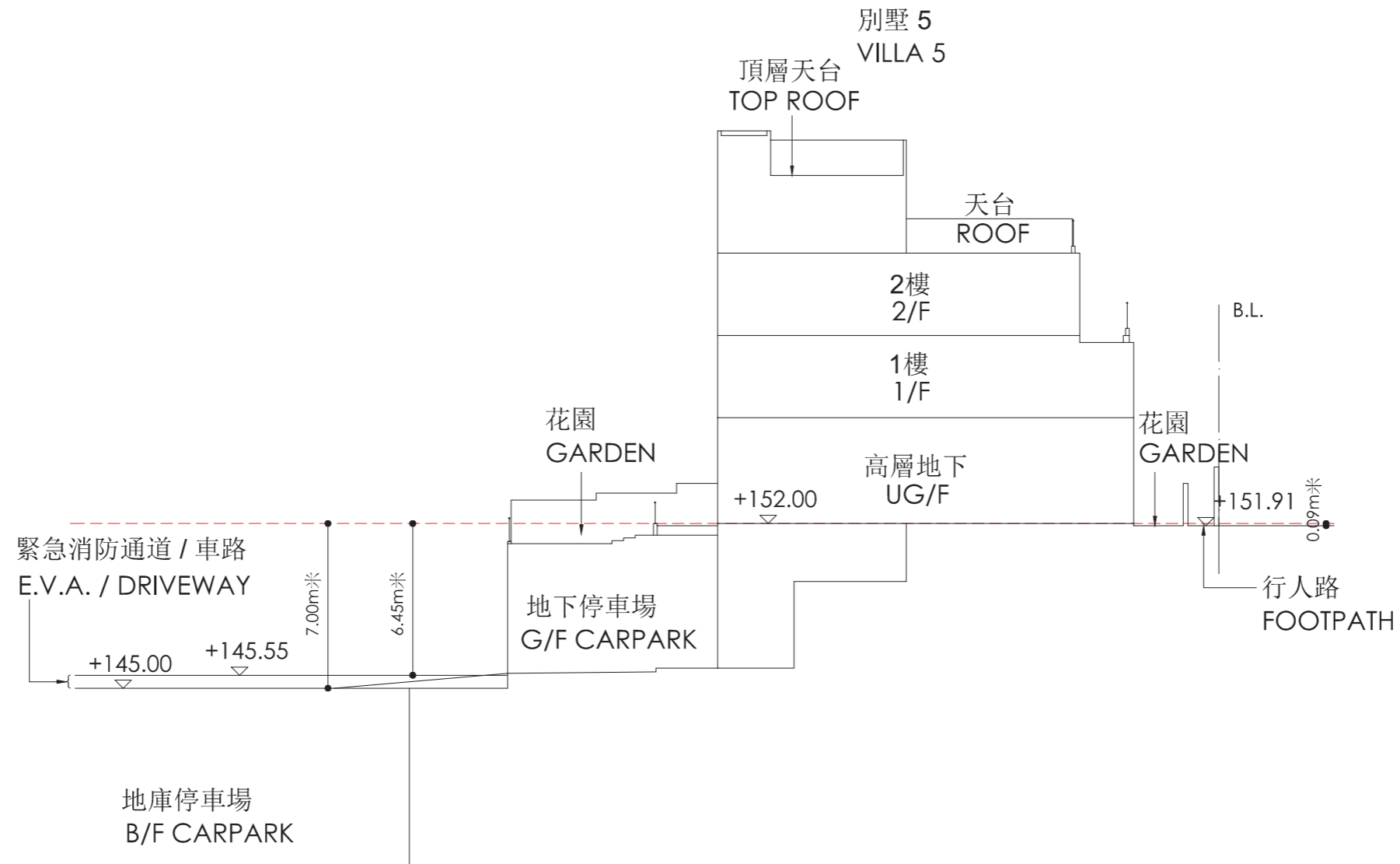
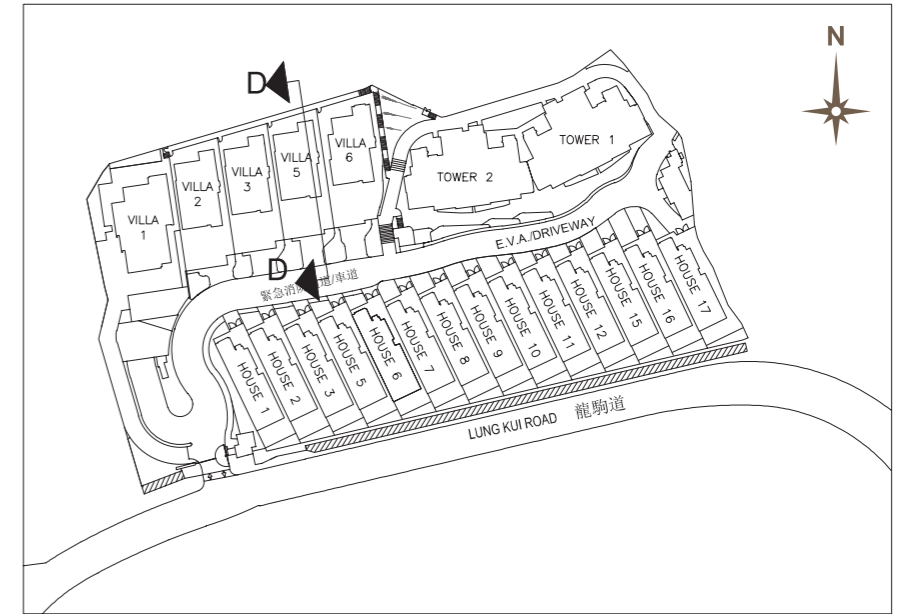
19 發展項目中的建築物的橫截面圖 CROSS-SECTION PLAN OF BUILDING IN THE DEVELOPMENT

橫截面圖 D-D

Cross-section plan D-D

- B.L. 發展項目的界線 Boundary of the Development
- 毗連建築物的一段緊急消防通道 / 車路為香港主水平基準以上145.00米至145.55米。
- 毗連建築物的一段行人路為香港主水平基準以上151.91米。
- ----- 虛線為最低住宅樓層水平。
- The part of Emergency Vehicle Access (E.V.A) / driveway adjacent to the building is 145.00 metres to 145.55 metres above Hong Kong Principal Datum (HKPD).
- The part of footpath adjacent to the building is 151.91 metres above Hong Kong Principal Datum (HKPD).
- ----- Dotted line denotes the lowest residential floor.

索引圖 Key Plan



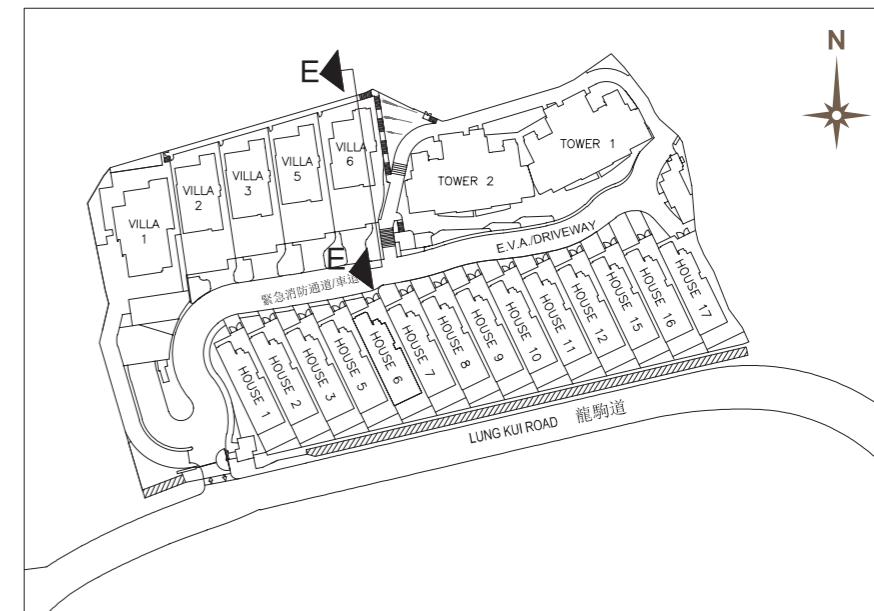
19 發展項目中的建築物的橫截面圖 CROSS-SECTION PLAN OF BUILDING IN THE DEVELOPMENT

橫截面圖 E-E

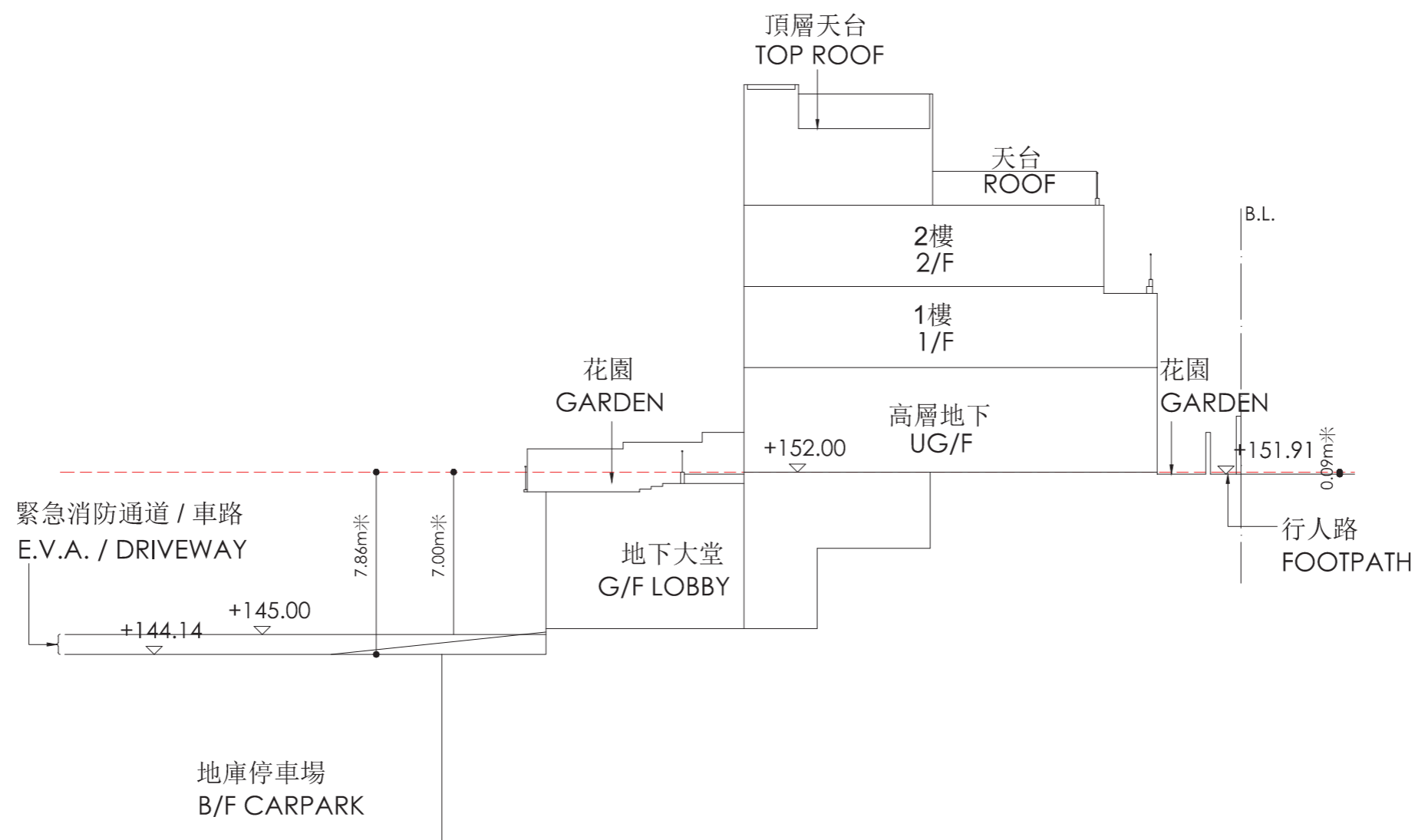
Cross-section plan E-E

- B.L. 發展項目的界線 Boundary of the Development
- 毗連建築物的一段緊急消防通道 / 車路為香港主水平基準以上144.14米至145.00米。
- 毗連建築物的一段行人路為香港主水平基準以上151.91米。
- ----- 虛線為最低住宅樓層水平。
- The part of Emergency Vehicle Access (E.V.A) / driveway adjacent to the building is 144.14 metres to 145.00 metres above Hong Kong Principal Datum (HKPD).
- The part of footpath adjacent to the building is 151.91 metres above Hong Kong Principal Datum (HKPD).
- ----- Dotted line denotes the lowest residential floor.

索引圖 Key Plan



別墅 6
VILLA 6



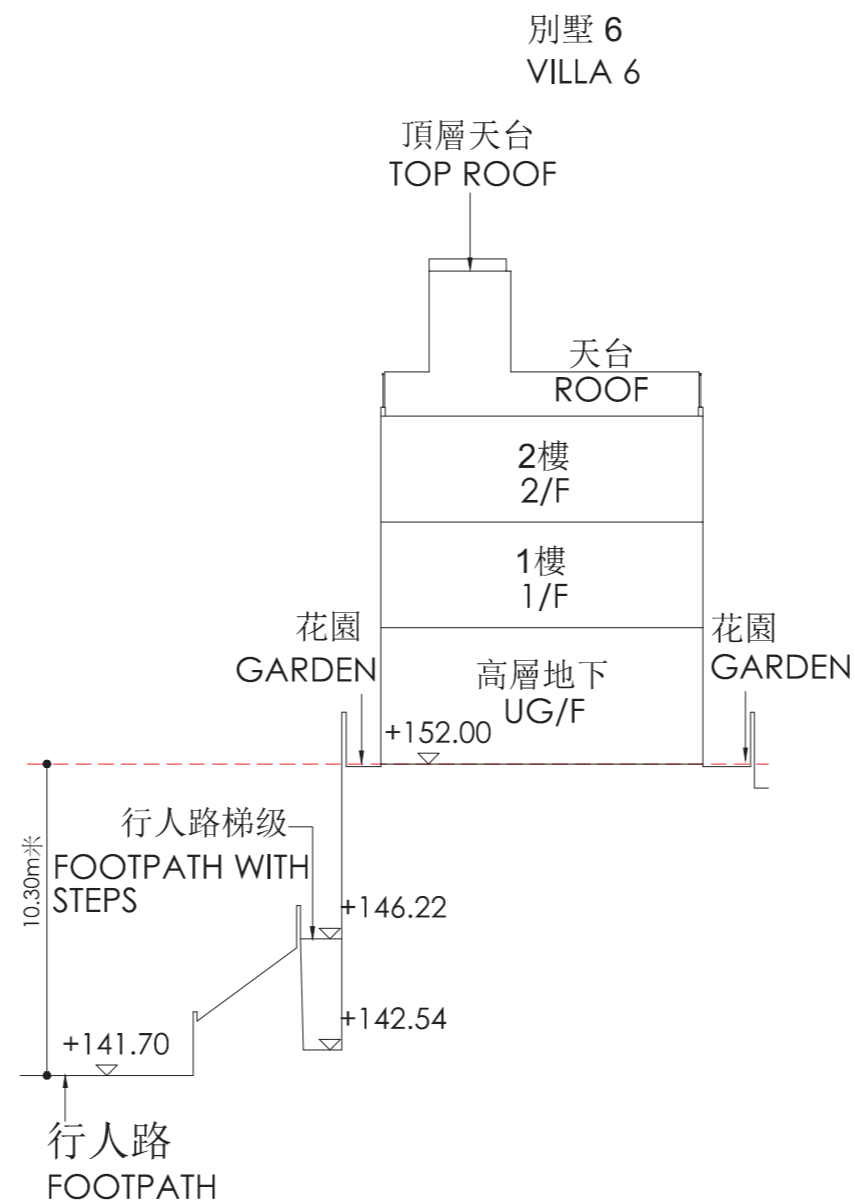
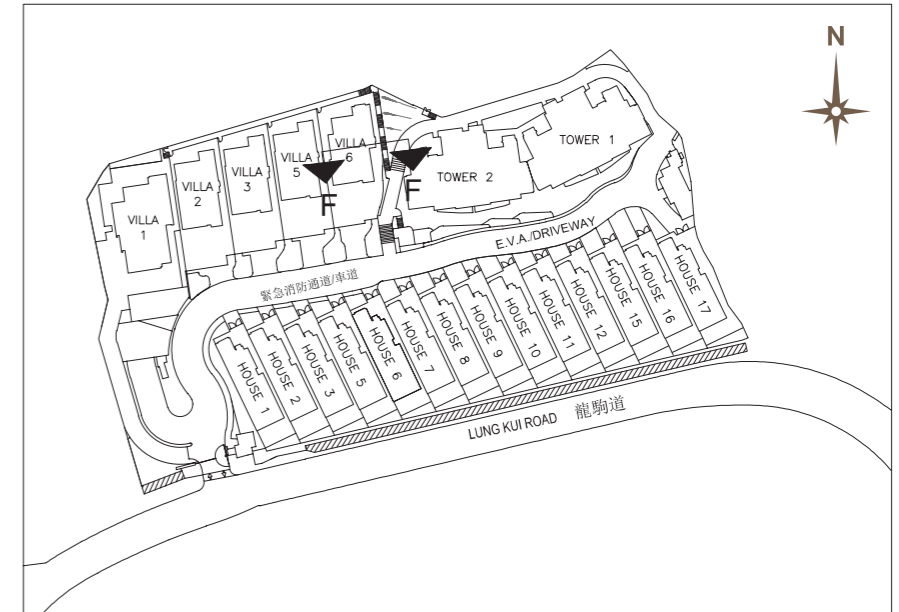
19 發展項目中的建築物的橫截面圖 CROSS-SECTION PLAN OF BUILDING IN THE DEVELOPMENT

橫截面圖 F-F

Cross-section plan F-F

- B.L. 發展項目的界線 Boundary of the Development
- 毗連建築物的一段行人路為香港主水平基準以上141.70米。
- ----- 虛線為最低住宅樓層水平。
- The part of footpath adjacent to the building is 141.70 metres above Hong Kong Principal Datum (HKPD).
- ----- Dotted line denotes the lowest residential floor.

索引圖 Key Plan

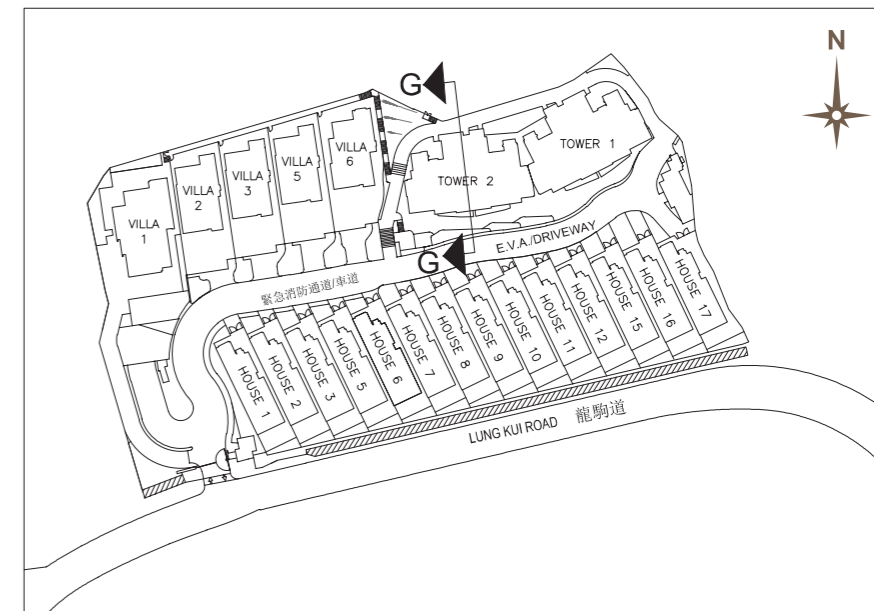


19 發展項目中的建築物的橫截面圖 CROSS-SECTION PLAN OF BUILDING IN THE DEVELOPMENT

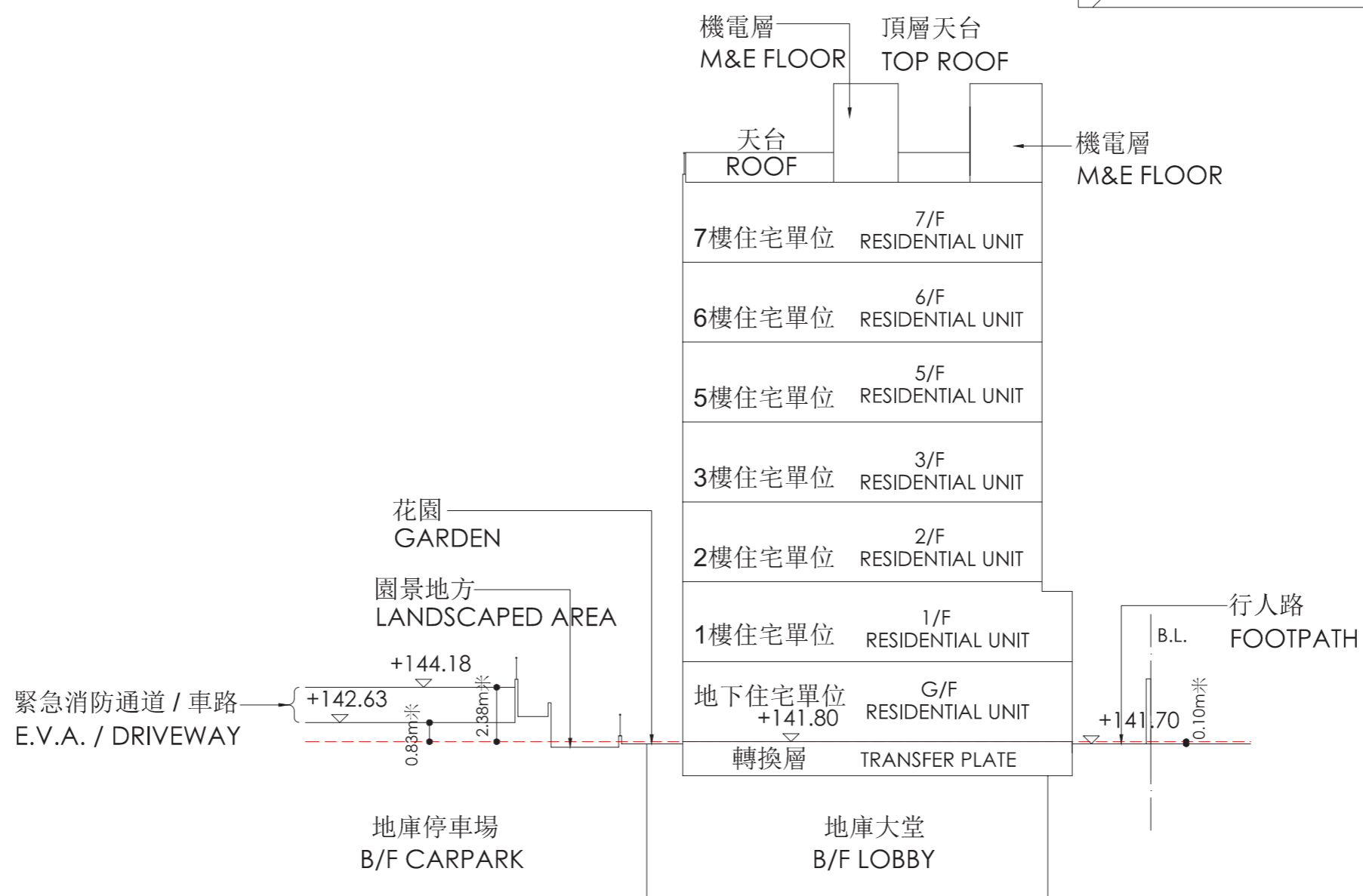
橫截面圖 G-G Cross-section plan G-G

- B.L. 發展項目的界線 Boundary of the Development
- 毗連建築物的一段緊急消防通道 / 車路為香港主水平基準以上142.63米至144.18米。
- 毗連建築物的一段行人路為香港主水平基準以上141.70米。
- ----- 虛線為最低住宅樓層水平。
- The part of Emergency Vehicle Access (E.V.A) / driveway adjacent to the building is 142.63 metres to 144.18 metres above Hong Kong Principal Datum (HKPD).
- The part of footpath adjacent to the building is 141.70 metres above Hong Kong Principal Datum (HKPD).
- ----- Dotted line denotes the lowest residential floor.

索引圖 Key Plan



第2座 TOWER 2

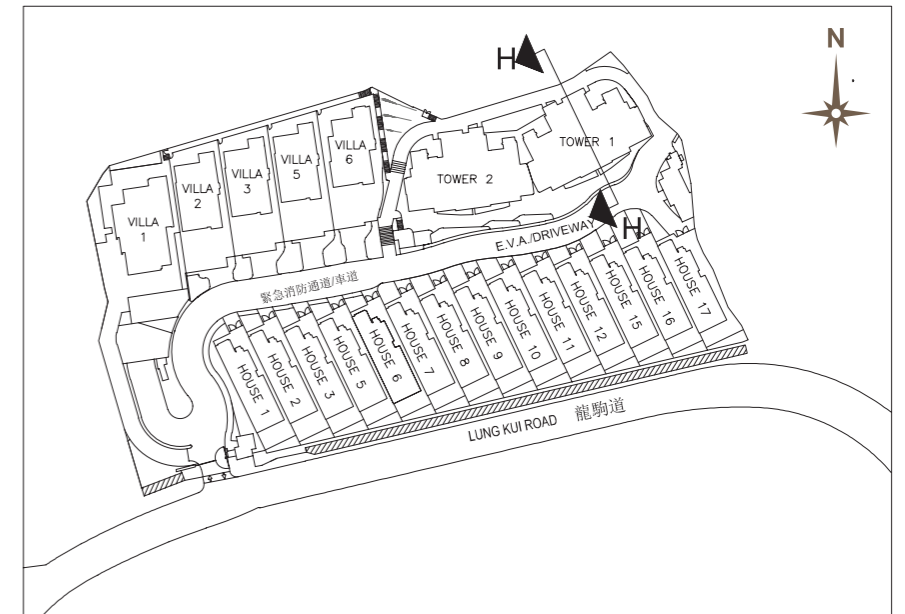


19 發展項目中的建築物的橫截面圖 CROSS-SECTION PLAN OF BUILDING IN THE DEVELOPMENT

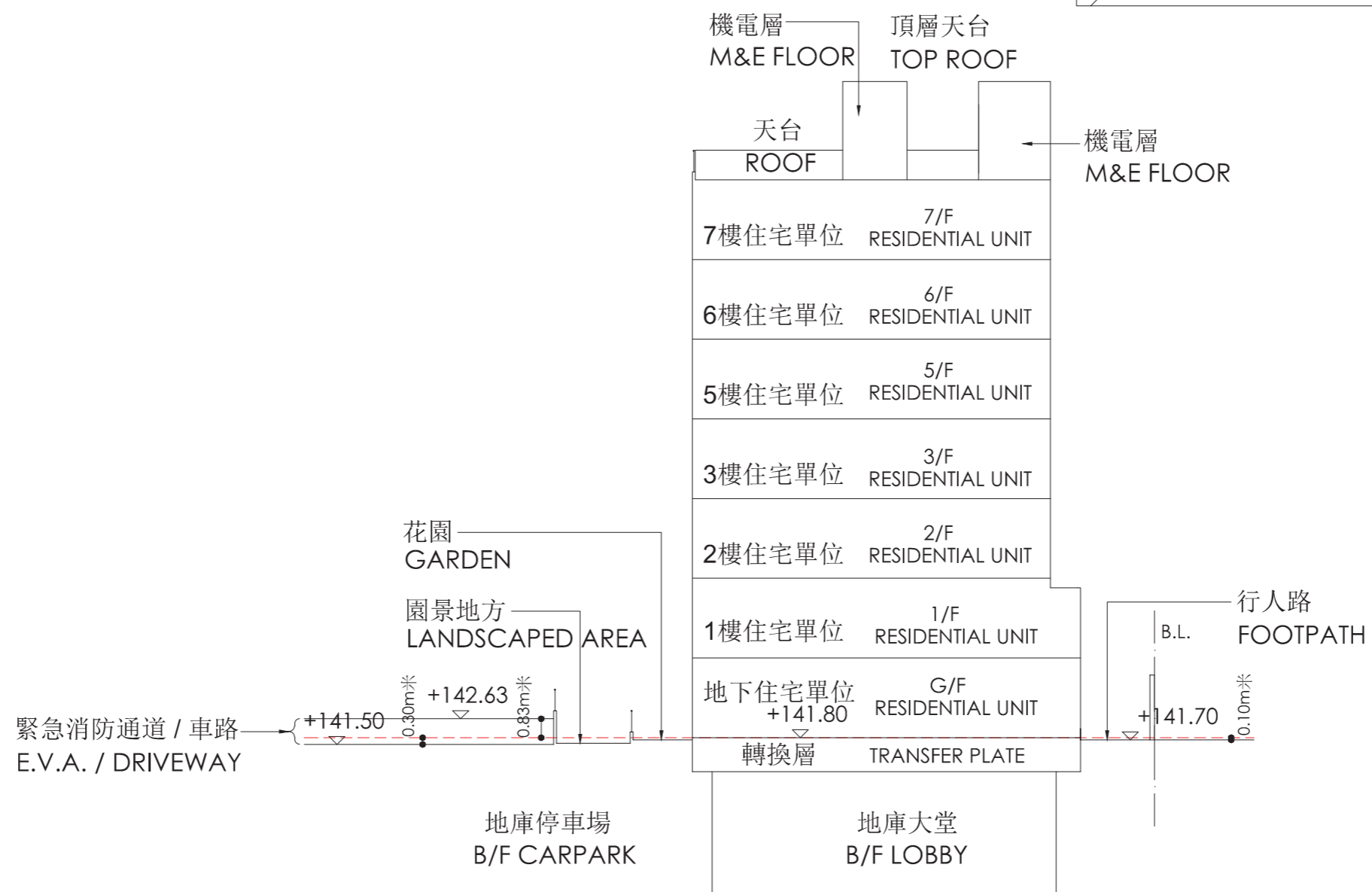
橫截面圖 H-H Cross-section plan H-H

- B.L. 發展項目的界線 Boundary of the Development
- 毗連建築物的一段緊急消防通道 / 車路為香港主水平基準以上141.50米至142.63米。
- 毗連建築物的一段行人路為香港主水平基準以上141.70米。
- ----- 虛線為最低住宅樓層水平。
- The part of Emergency Vehicle Access (E.V.A.) / driveway adjacent to the building is 141.50 metres to 142.63 metres above Hong Kong Principal Datum (HKPD).
- The part of footpath adjacent to the building is 141.70 metres above Hong Kong Principal Datum (HKPD).
- ----- Dotted line denotes the lowest residential floor.

索引圖 Key Plan



第1座 TOWER 1

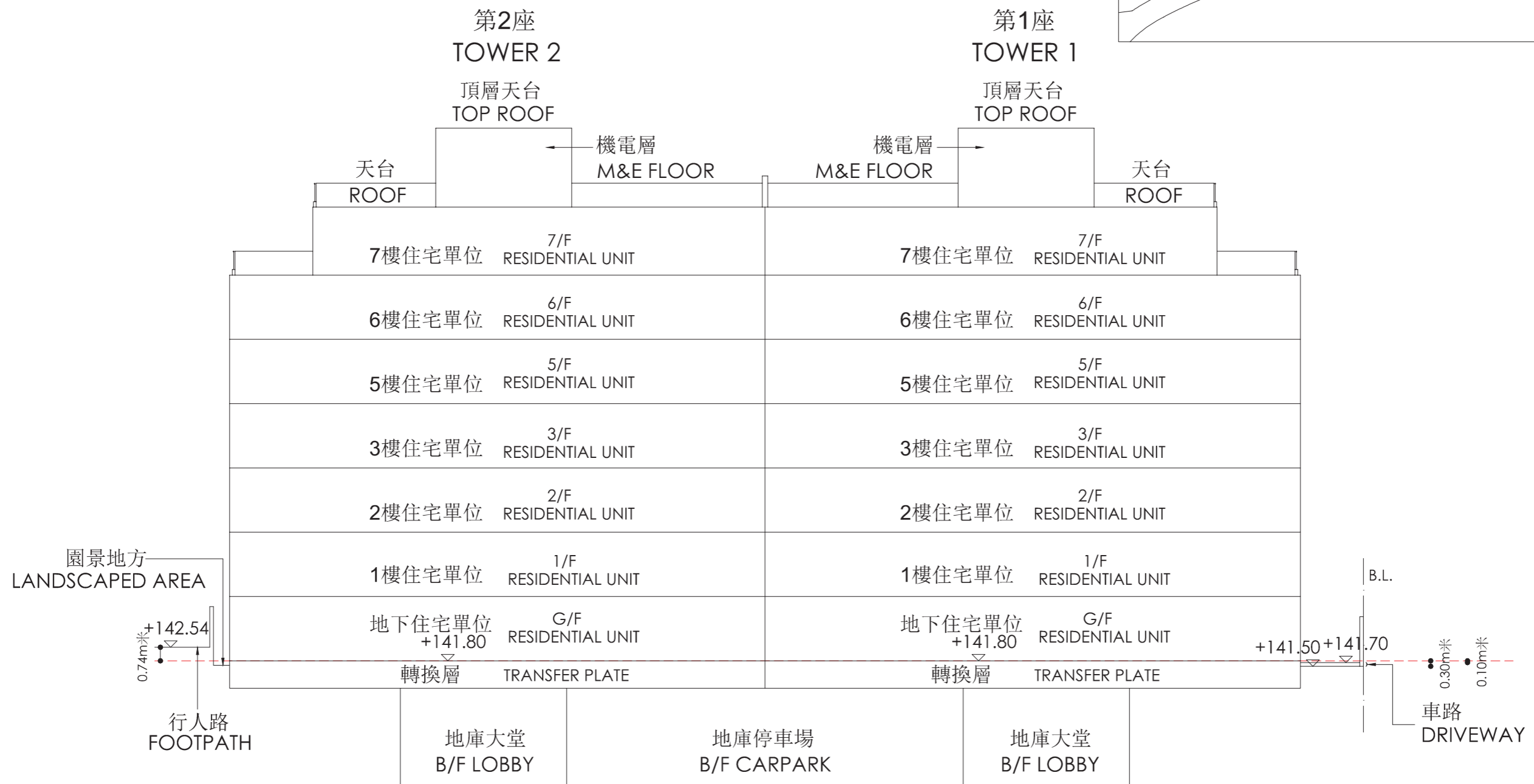
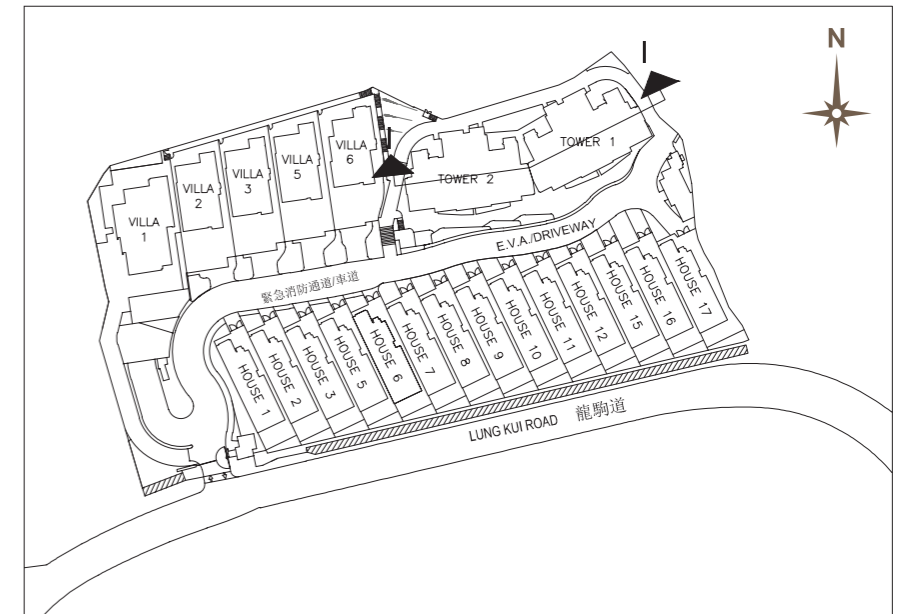


19 發展項目中的建築物的橫截面圖 CROSS-SECTION PLAN OF BUILDING IN THE DEVELOPMENT

橫截面圖 I-I
Cross-section plan I-I

- B.L. 發展項目的界線 Boundary of the Development
- 毗連建築物的一段車路為香港主水平基準以上141.50米至141.70米。
- 毗連建築物的一段行人路為香港主水平基準以上142.54米。
- ----- 虛線為最低住宅樓層水平。
- The part of driveway adjacent to the building is 141.50 metres to 141.70 metres above Hong Kong Principal Datum (HKPD).
- The part of footpath adjacent to the building is 142.54 metres above Hong Kong Principal Datum (HKPD).
- ----- Dotted line denotes the lowest residential floor.

索引圖
Key Plan

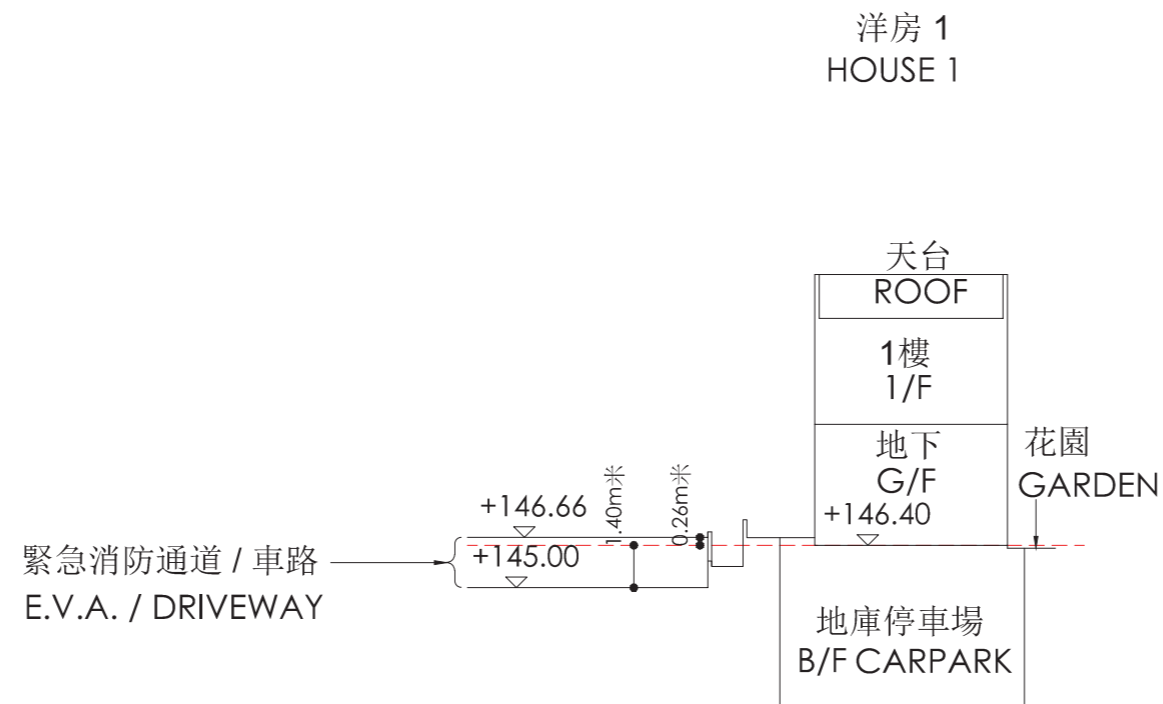
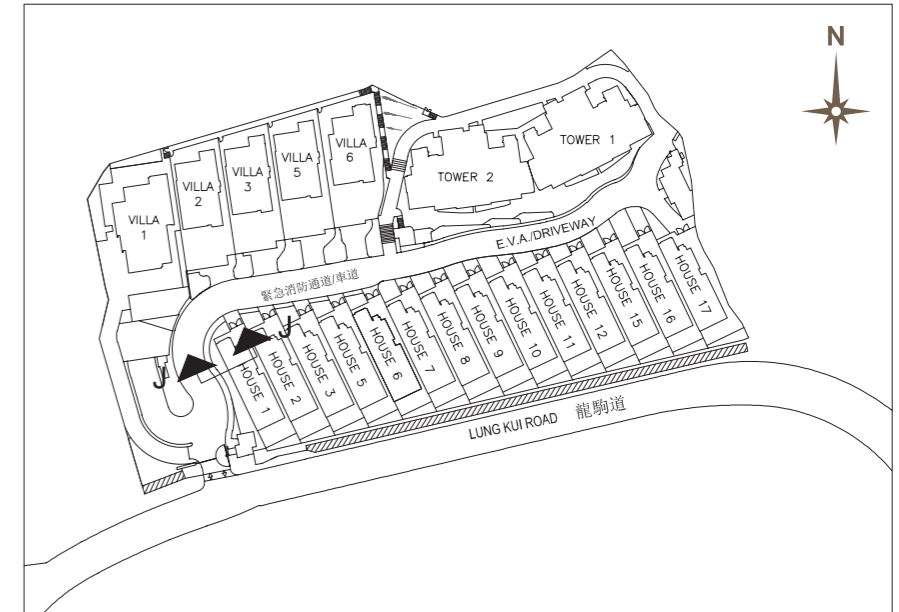


19 發展項目中的建築物的橫截面圖 CROSS-SECTION PLAN OF BUILDING IN THE DEVELOPMENT

橫截面圖 J-J Cross-section plan J-J

- B.L. 發展項目的界線 Boundary of the Development
- 毗連建築物的一段緊急消防通道 / 車路為香港主水平基準以上145.00米至146.66米。
- ----- 虛線為最低住宅樓層水平。
- The part of Emergency Vehicle Access (E.V.A) / driveway adjacent to the building is 145.00 metres to 146.66 metres above Hong Kong Principal Datum (HKPD).
- ----- Dotted line denotes the lowest residential floor.

索引圖 Key Plan

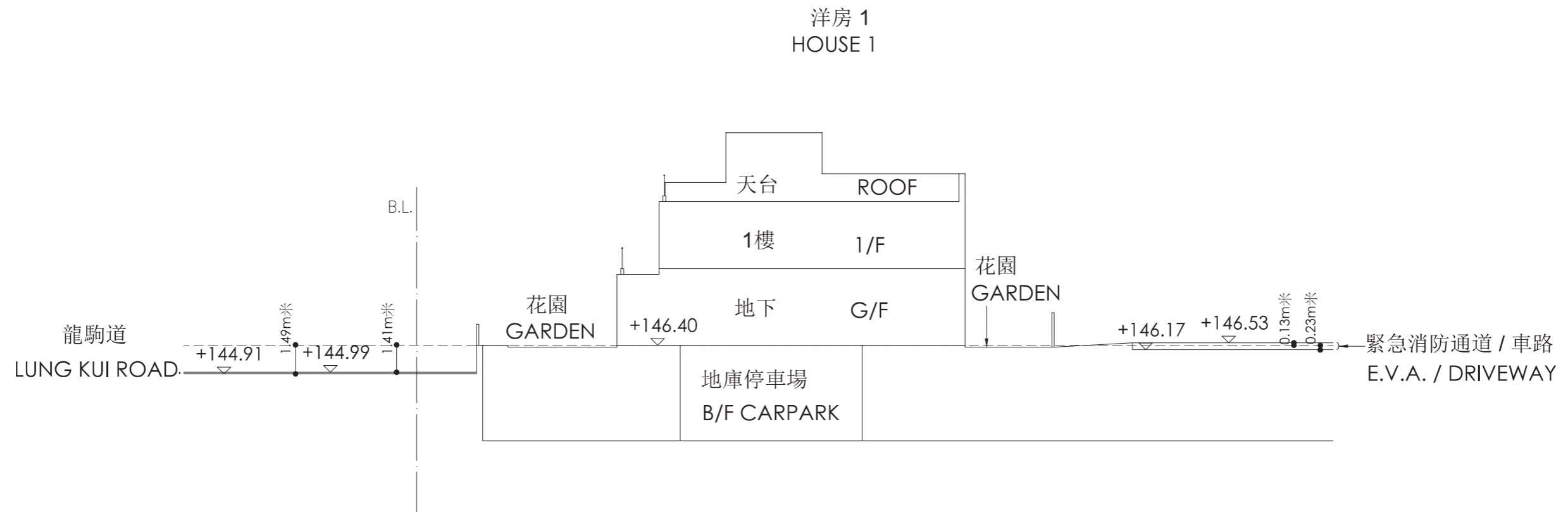
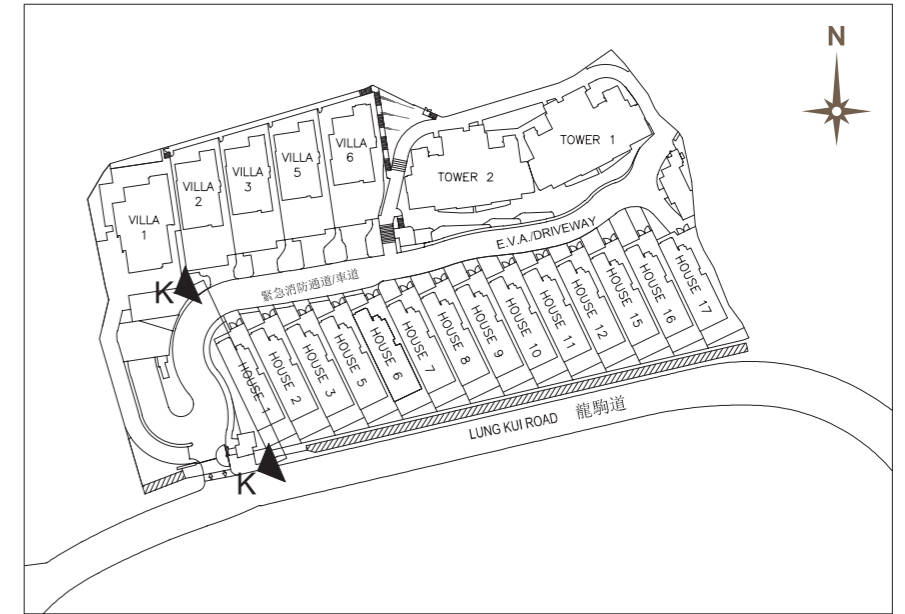


19 發展項目中的建築物的橫截面圖 CROSS-SECTION PLAN OF BUILDING IN THE DEVELOPMENT

橫截面圖 K-K Cross-section plan K-K

- B.L. 發展項目的界線 Boundary of the Development
- 毗連建築物的一段緊急消防通道 / 車路為香港主水平基準以上146.17米至146.53米。
- 毗連建築物的一段龍駒道為香港主水平基準以上144.91米至144.99米。
- - - - - 虛線為最低住宅樓層水平。
- The part of Emergency Vehicle Access (E.V.A.) / driveway adjacent to the building is 146.17 metres to 146.53 metres above Hong Kong Principal Datum (HKPD).
- The part of Lung Kui Road adjacent to the building is 144.91 metres to 144.99 metres above Hong Kong Principal Datum (HKPD).
- - - - - Dotted line denotes the lowest residential floor.

索引圖 Key Plan



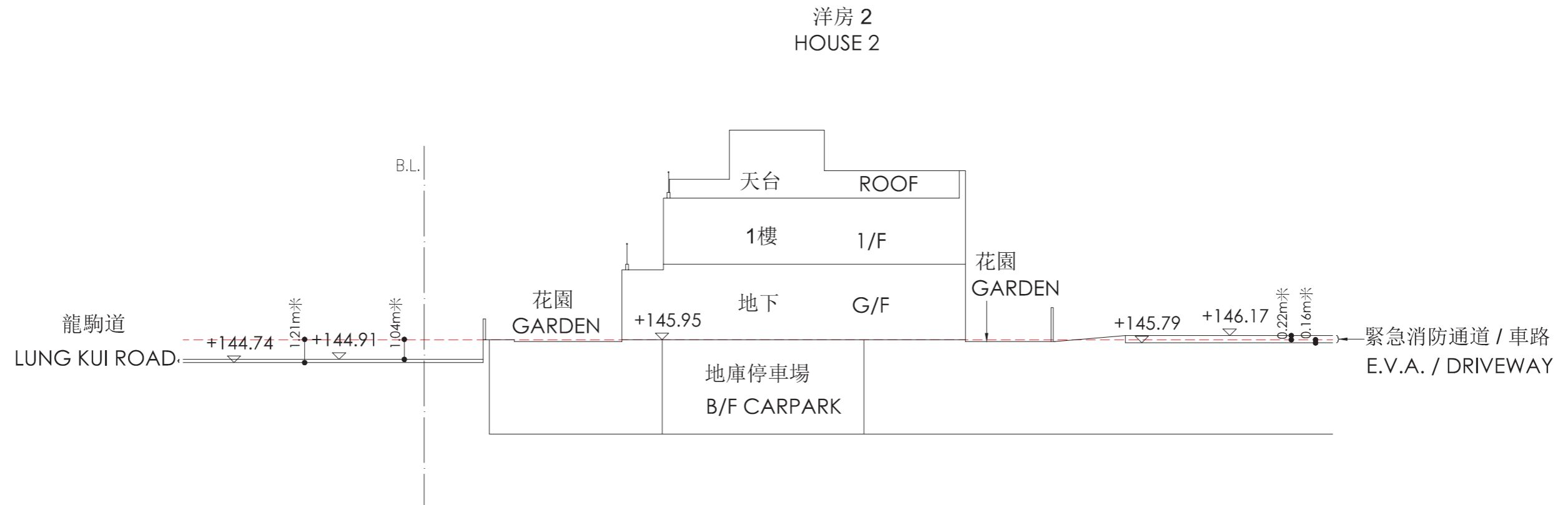
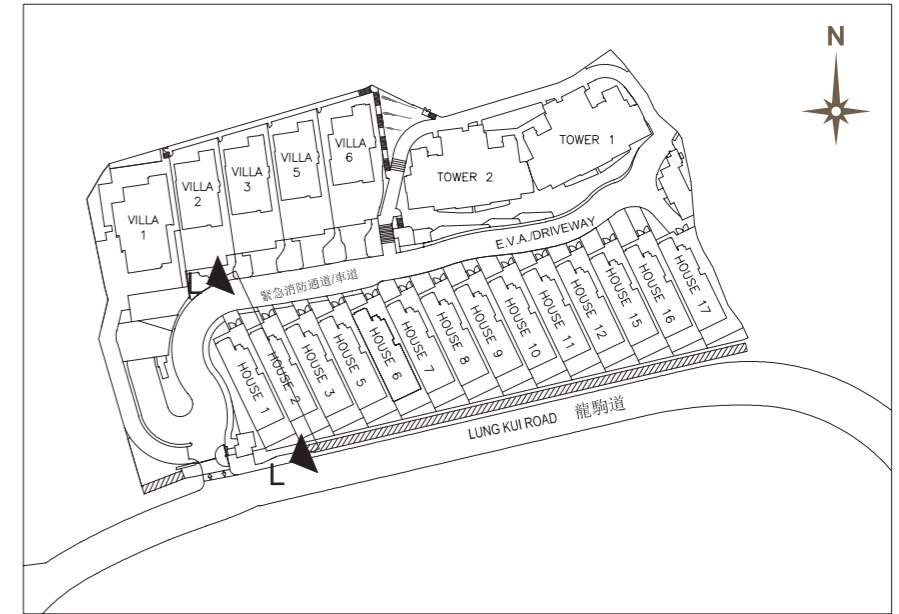
19 發展項目中的建築物的橫截面圖 CROSS-SECTION PLAN OF BUILDING IN THE DEVELOPMENT

橫截面圖 L-L

Cross-section plan L-L

- B.L. 發展項目的界線 Boundary of the Development
- 毗連建築物的一段緊急消防通道 / 車路為香港主水平基準以上145.79米至146.17米。
- 毗連建築物的一段龍駒道為香港主水平基準以上144.74米至144.91米。
- ----- 虛線為最低住宅樓層水平。
- The part of Emergency Vehicle Access (E.V.A) / driveway adjacent to the building is 145.79 metres to 146.17 metres above Hong Kong Principal Datum (HKPD).
- The part of Lung Kui Road adjacent to the building is 144.74 metres to 144.91 metres above Hong Kong Principal Datum (HKPD).
- ----- Dotted line denotes the lowest residential floor.

索引圖 Key Plan

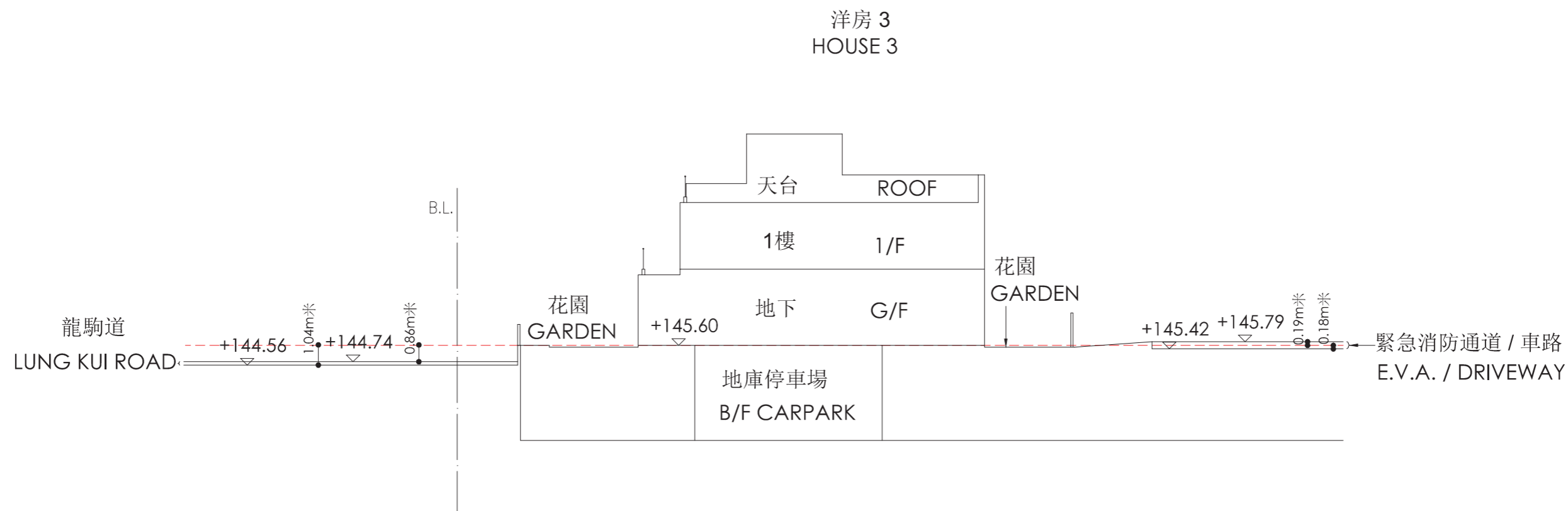
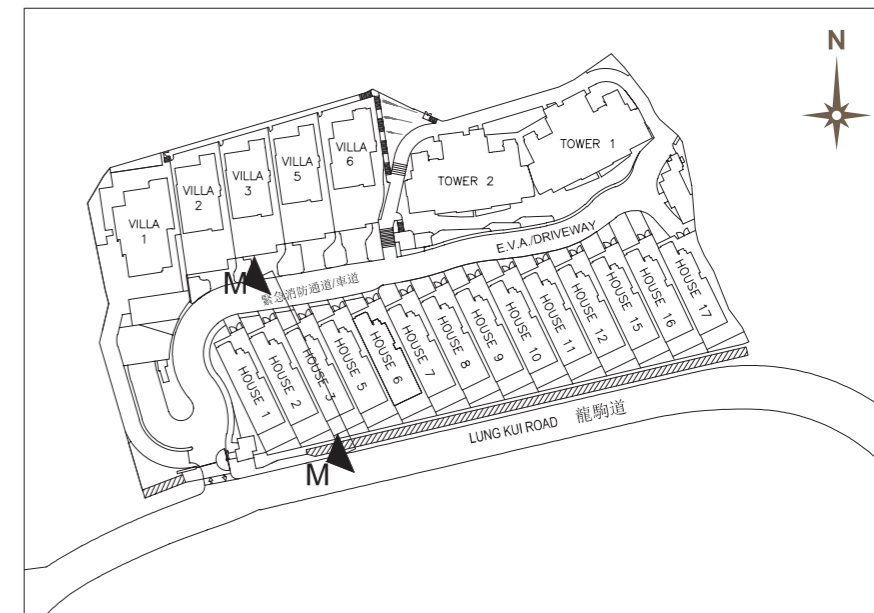


19 發展項目中的建築物的橫截面圖 CROSS-SECTION PLAN OF BUILDING IN THE DEVELOPMENT

橫截面圖 M-M Cross-section plan M-M

- B.L. 發展項目的界線 Boundary of the Development
- 毗連建築物的一段緊急消防通道 / 車路為香港主水平基準以上145.42米至145.79米。
- 毗連建築物的一段龍駒道為香港主水平基準以上144.56米至144.74米。
- - - - - 虛線為最低住宅樓層水平。
- The part of Emergency Vehicle Access (E.V.A.) / driveway adjacent to the building is 145.42 metres to 145.79 metres above Hong Kong Principal Datum (HKPD).
- The part of Lung Kui Road adjacent to the building is 144.56 metres to 144.74 metres above Hong Kong Principal Datum (HKPD).
- - - - - Dotted line denotes the lowest residential floor.

索引圖 Key Plan



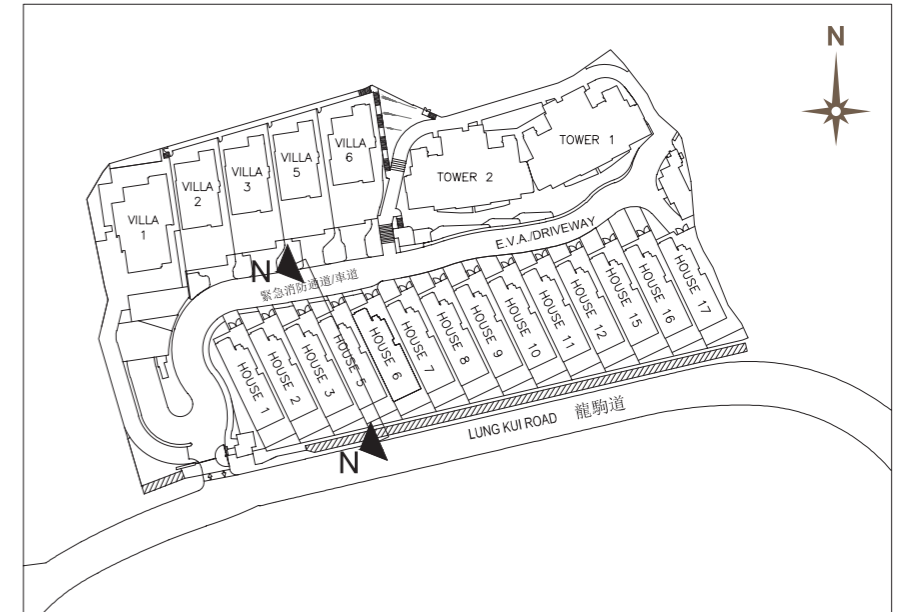
19 發展項目中的建築物的橫截面圖 CROSS-SECTION PLAN OF BUILDING IN THE DEVELOPMENT

橫截面圖 N-N

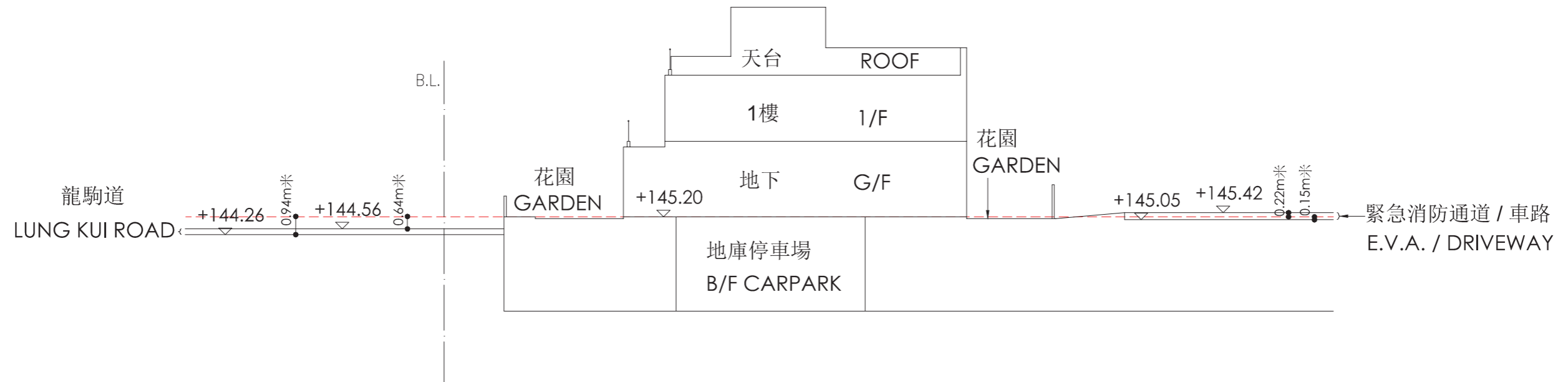
Cross-section plan N-N

- B.L. 發展項目的界線 Boundary of the Development
- 毗連建築物的一段緊急消防通道 / 車路為香港主水平基準以上145.05米至145.42米。
- 毗連建築物的一段龍駒道為香港主水平基準以上144.26米至144.56米。
- ----- 虛線為最低住宅樓層水平。
- The part of Emergency Vehicle Access (E.V.A) / driveway adjacent to the building is 145.05 metres to 145.42 metres above Hong Kong Principal Datum (HKPD).
- The part of Lung Kui Road adjacent to the building is 144.26 metres to 144.56 metres above Hong Kong Principal Datum (HKPD).
- ----- Dotted line denotes the lowest residential floor.

索引圖 Key Plan



洋房 5
HOUSE 5

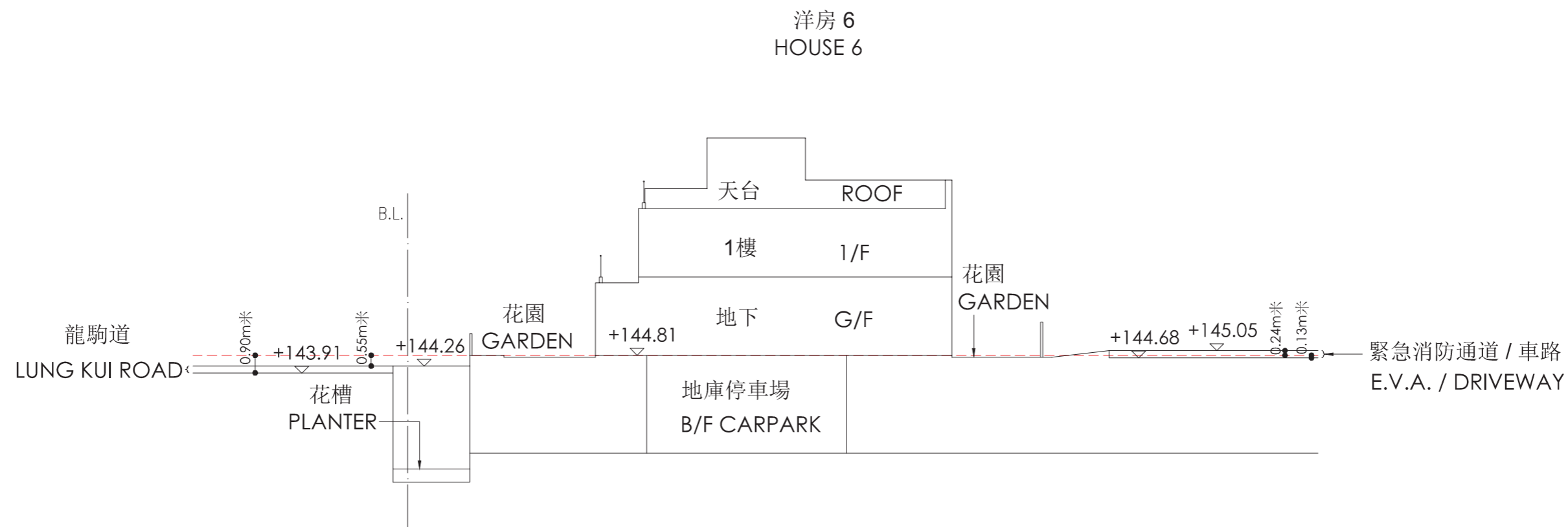
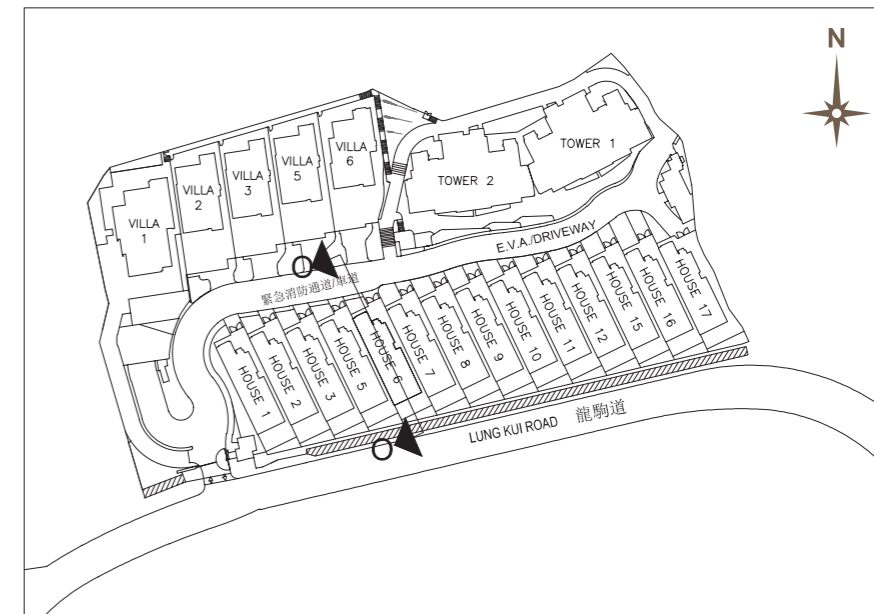


19 發展項目中的建築物的橫截面圖 CROSS-SECTION PLAN OF BUILDING IN THE DEVELOPMENT

橫截面圖 O-O Cross-section plan O-O

- B.L. 發展項目的界線 Boundary of the Development
- 毗連建築物的一段緊急消防通道 / 車路為香港主水平基準以上144.68米至145.05米。
- 毗連建築物的一段龍駒道為香港主水平基準以上143.91米至144.26米。
- - - - - 虛線為最低住宅樓層水平。
- The part of Emergency Vehicle Access (E.V.A) / driveway adjacent to the building is 144.68 metres to 145.05 metres above Hong Kong Principal Datum (HKPD).
- The part of Lung Kui Road adjacent to the building is 143.91 metres to 144.26 metres above Hong Kong Principal Datum (HKPD).
- - - - - Dotted line denotes the lowest residential floor.

索引圖 Key Plan

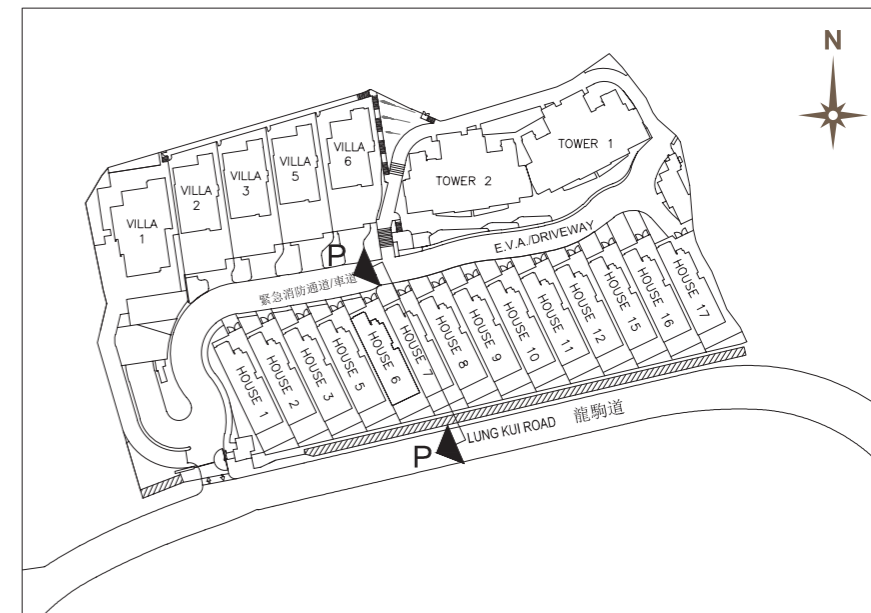


19 發展項目中的建築物的橫截面圖 CROSS-SECTION PLAN OF BUILDING IN THE DEVELOPMENT

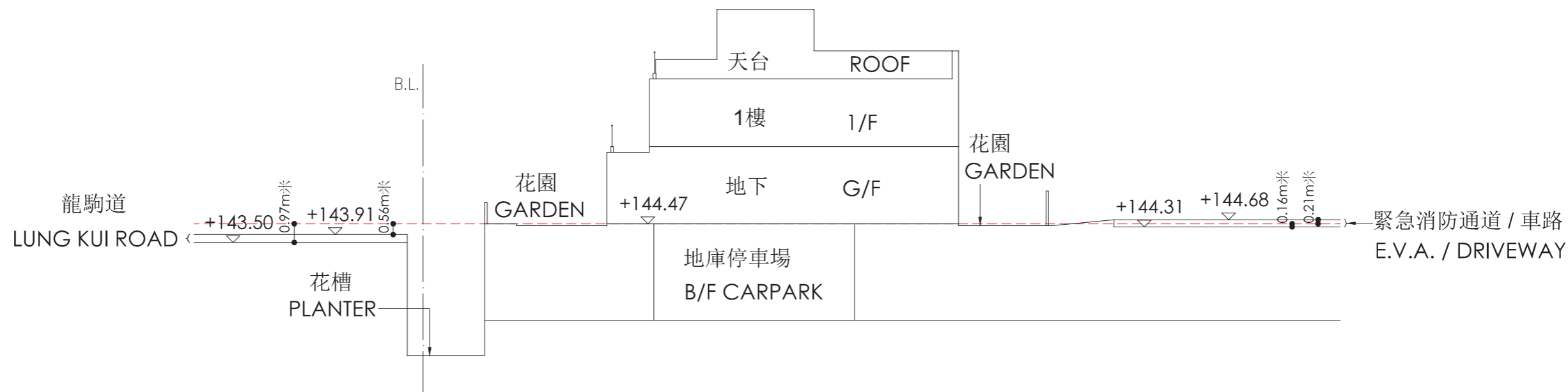
橫截面圖 P-P Cross-section plan P-P

- B.L. 發展項目的界線 Boundary of the Development
- 毗連建築物的一段緊急消防通道 / 車路為香港主水平基準以上144.31米至144.68米。
- 毗連建築物的一段龍駒道為香港主水平基準以上143.50米至143.91米。
- - - - - 虛線為最低住宅樓層水平。
- The part of Emergency Vehicle Access (E.V.A.) / driveway adjacent to the building is 144.31 metres to 144.68 metres above Hong Kong Principal Datum (HKPD).
- The part of Lung Kui Road adjacent to the building is 143.50 metres to 143.91 metres above Hong Kong Principal Datum (HKPD).
- - - - - Dotted line denotes the lowest residential floor.

索引圖 Key Plan



洋房 7 HOUSE 7

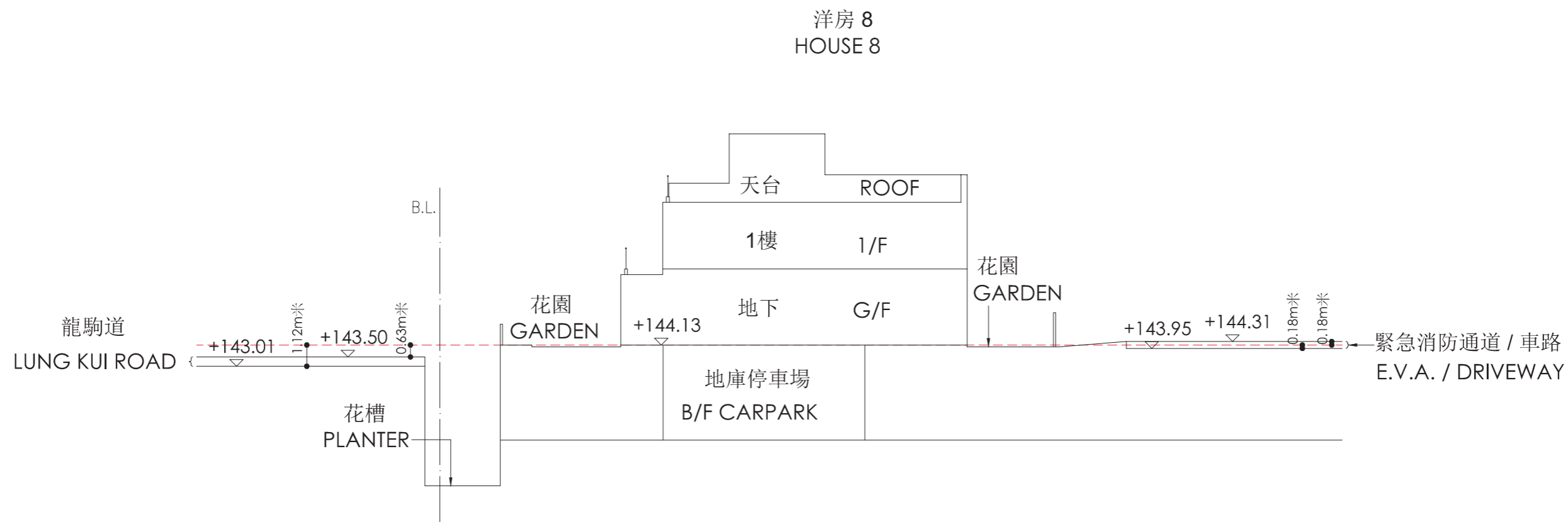
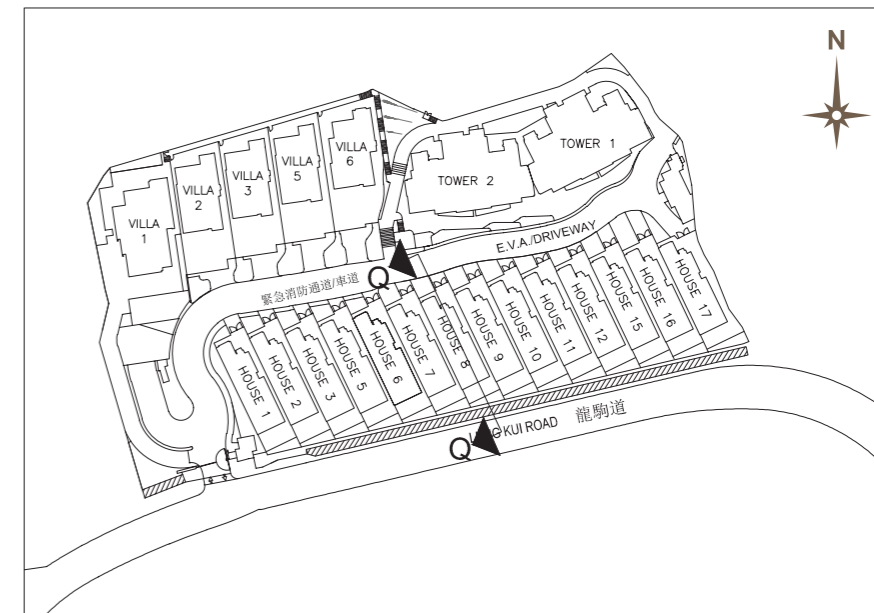


19 發展項目中的建築物的橫截面圖 CROSS-SECTION PLAN OF BUILDING IN THE DEVELOPMENT

橫截面圖 Q-Q Cross-section plan Q-Q

- B.L. 發展項目的界線 Boundary of the Development
- 毗連建築物的一段緊急消防通道 / 車路為香港主水平基準以上143.95米至144.31米。
- 毗連建築物的一段龍駒道為香港主水平基準以上143.01米至143.50米。
- ----- 虛線為最低住宅樓層水平。
- The part of Emergency Vehicle Access (E.V.A) / driveway adjacent to the building is 143.95 metres to 144.31 metres above Hong Kong Principal Datum (HKPD).
- The part of Lung Kui Road adjacent to the building is 143.01 metres to 143.50 metres above Hong Kong Principal Datum (HKPD).
- ----- Dotted line denotes the lowest residential floor.

索引圖 Key Plan



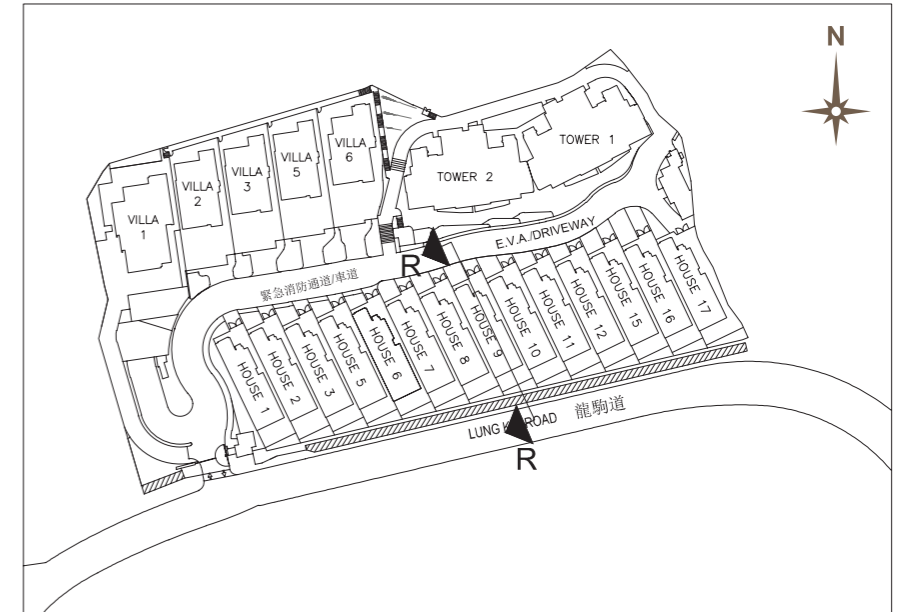
19 發展項目中的建築物的橫截面圖 CROSS-SECTION PLAN OF BUILDING IN THE DEVELOPMENT

橫截面圖 R-R

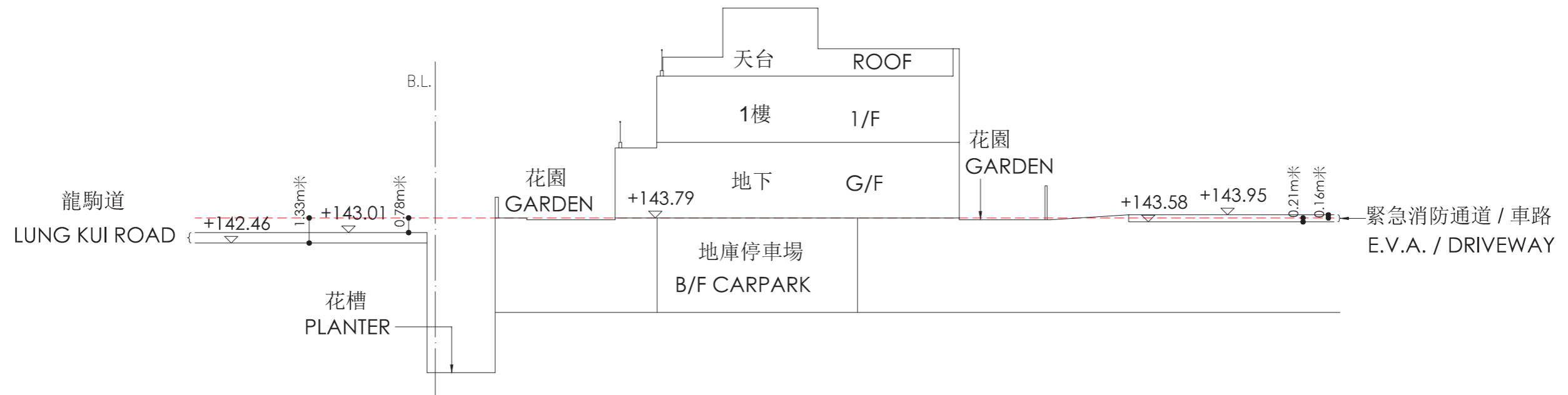
Cross-section plan R-R

- B.L. 發展項目的界線 Boundary of the Development
- 毗連建築物的一段緊急消防通道 / 車路為香港主水平基準以上143.58米至143.95米。
- 毗連建築物的一段龍駒道為香港主水平基準以上142.46米至143.01米。
- - - - - 虛線為最低住宅樓層水平。
- The part of Emergency Vehicle Access (E.V.A) / driveway adjacent to the building is 143.58 metres to 143.95 metres above Hong Kong Principal Datum (HKPD).
- The part of Lung Kui Road adjacent to the building is 142.46 metres to 143.01 metres above Hong Kong Principal Datum (HKPD).
- - - - - Dotted line denotes the lowest residential floor.

索引圖 Key Plan



洋房 9
HOUSE 9

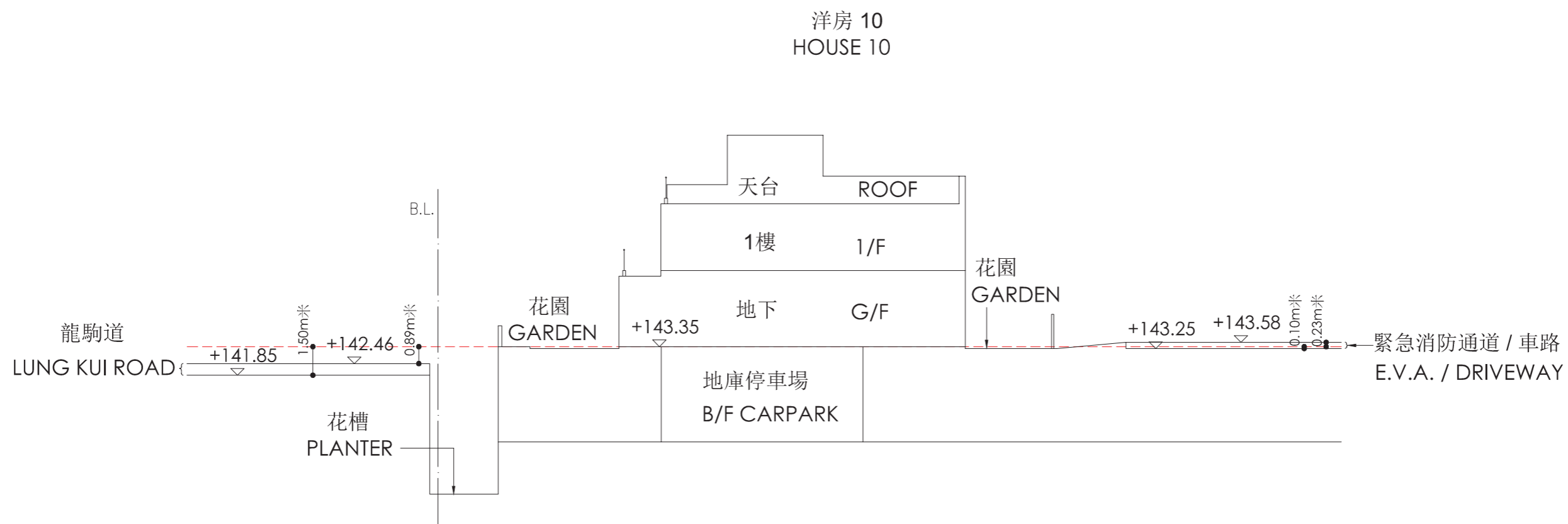
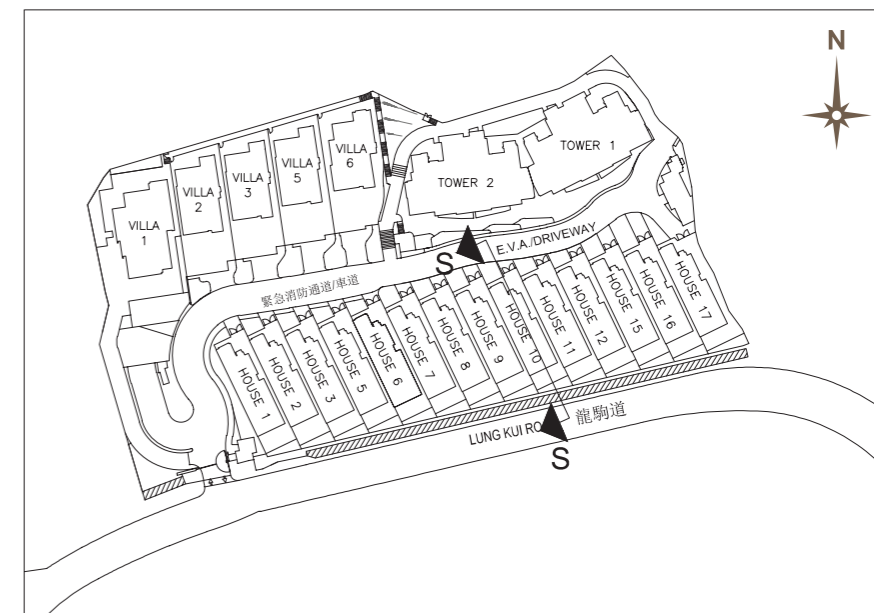


19 發展項目中的建築物的橫截面圖 CROSS-SECTION PLAN OF BUILDING IN THE DEVELOPMENT

橫截面圖 S-S Cross-section plan S-S

- B.L. 發展項目的界線 Boundary of the Development
- 毗連建築物的一段緊急消防通道 / 車路為香港主水平基準以上143.25米至143.58米。
- 毗連建築物的一段龍駒道為香港主水平基準以上141.85米至142.46米。
- - - - - 虛線為最低住宅樓層水平。
- The part of Emergency Vehicle Access (E.V.A) / driveway adjacent to the building is 143.25 metres to 143.58 metres above Hong Kong Principal Datum (HKPD).
- The part of Lung Kui Road adjacent to the building is 141.85 metres to 142.46 metres above Hong Kong Principal Datum (HKPD).
- - - - - Dotted line denotes the lowest residential floor.

索引圖 Key Plan

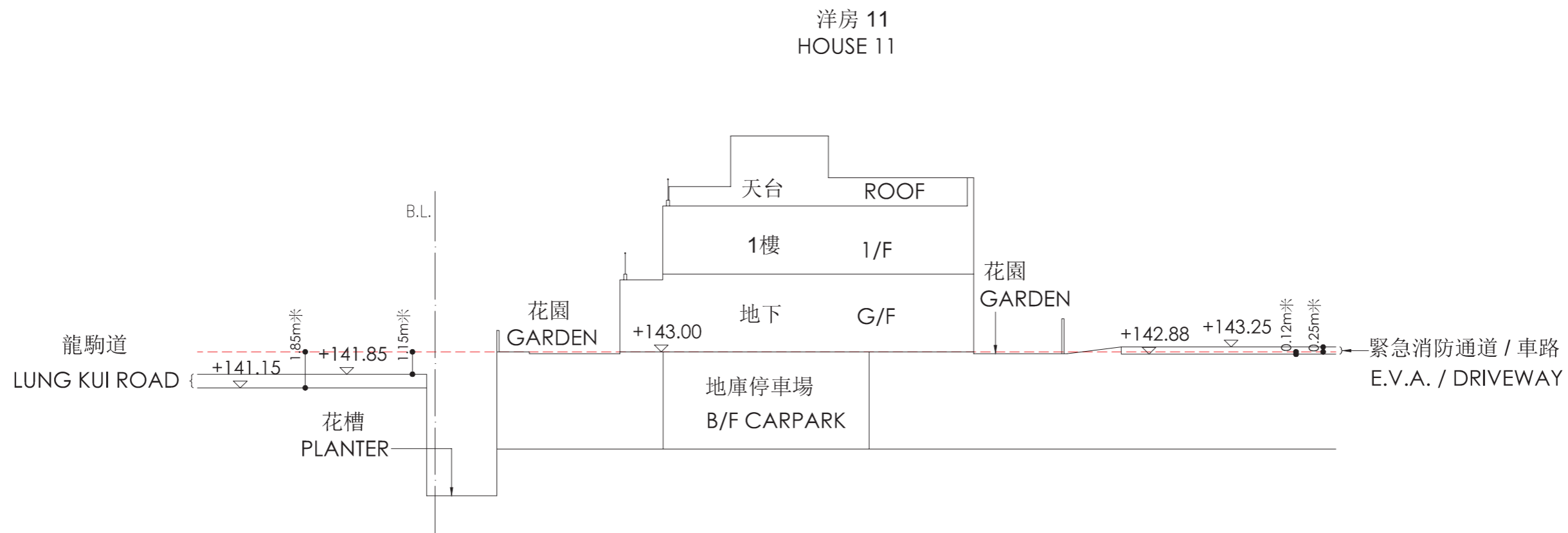
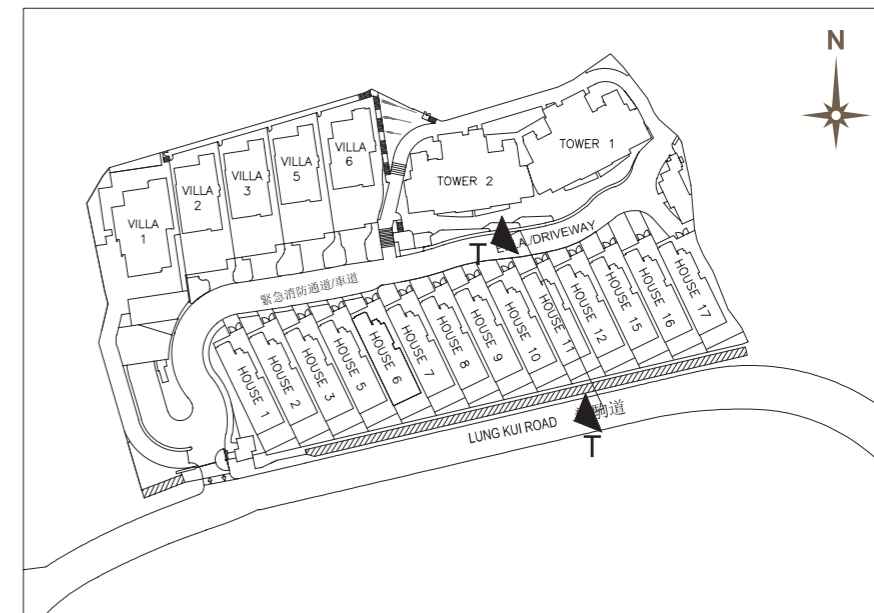


19 發展項目中的建築物的橫截面圖 CROSS-SECTION PLAN OF BUILDING IN THE DEVELOPMENT

橫截面圖 T-T Cross-section plan T-T

- B.L. 發展項目的界線 Boundary of the Development
- 毗連建築物的一段緊急消防通道 / 車路為香港主水平基準以上142.88米至143.25米。
- 毗連建築物的一段龍駒道為香港主水平基準以上141.15米至141.85米。
- ----- 虛線為最低住宅樓層水平。
- The part of Emergency Vehicle Access (E.V.A) / driveway adjacent to the building is 142.88 metres to 143.25 metres above Hong Kong Principal Datum (HKPD).
- The part of Lung Kui Road adjacent to the building is 141.15 metres to 141.85 metres above Hong Kong Principal Datum (HKPD).
- ----- Dotted line denotes the lowest residential floor.

索引圖 Key Plan



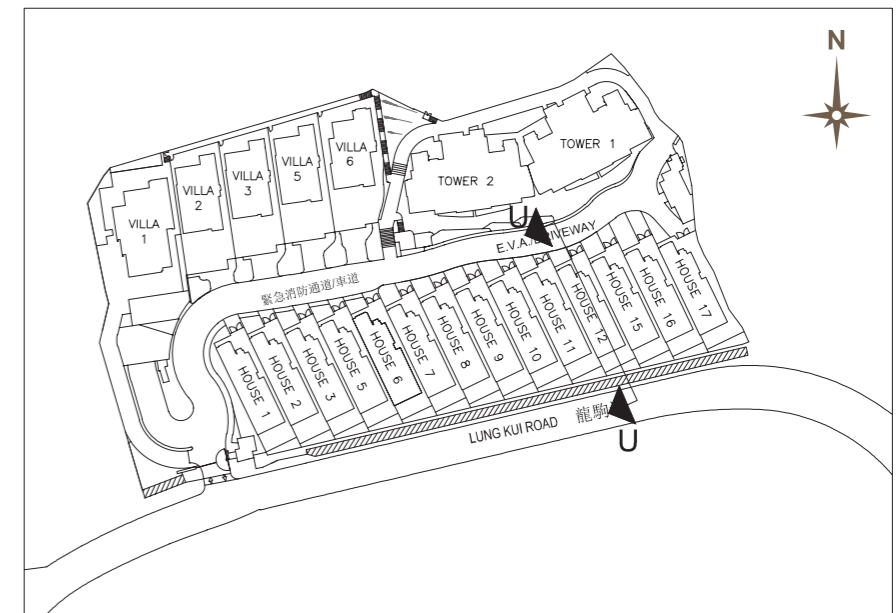
19 發展項目中的建築物的橫截面圖 CROSS-SECTION PLAN OF BUILDING IN THE DEVELOPMENT

橫截面圖 U-U

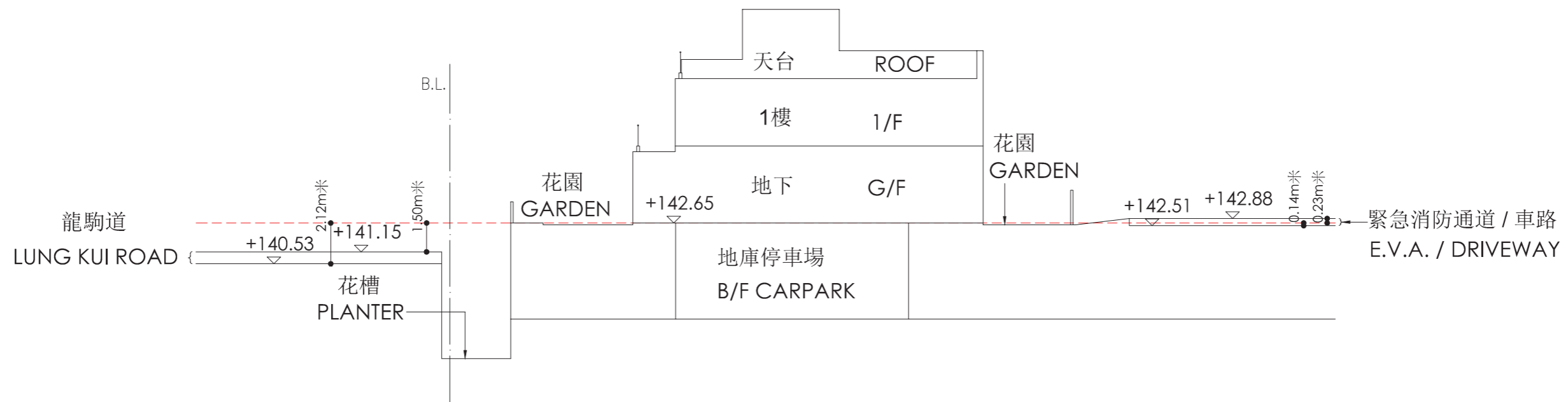
Cross-section plan U-U

- B.L. 發展項目的界線 Boundary of the Development
- 毗連建築物的一段緊急消防通道 / 車路為香港主水平基準以上142.51米至142.88米。
- 毗連建築物的一段龍駒道為香港主水平基準以上140.53米至141.15米。
- - - - - 虛線為最低住宅樓層水平。
- The part of Emergency Vehicle Access (E.V.A.) / driveway adjacent to the building is 142.51 metres to 142.88 metres above Hong Kong Principal Datum (HKPD).
- The part of Lung Kui Road adjacent to the building is 140.53 metres to 141.15 metres above Hong Kong Principal Datum (HKPD).
- - - - - Dotted line denotes the lowest residential floor.

索引圖 Key Plan



洋房 12
HOUSE 12



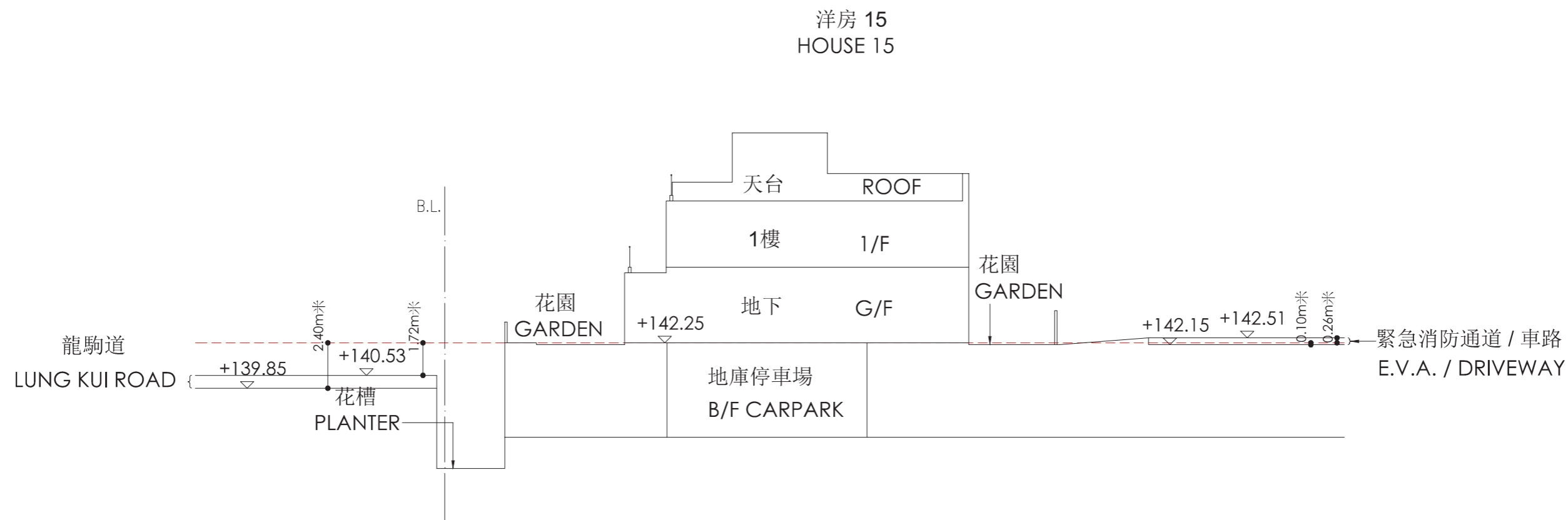
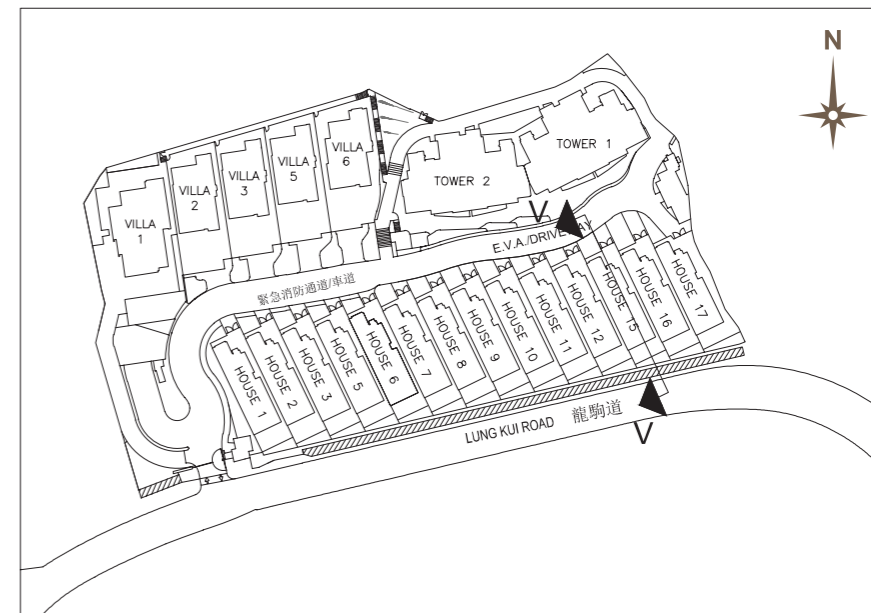
19 發展項目中的建築物的橫截面圖 CROSS-SECTION PLAN OF BUILDING IN THE DEVELOPMENT

橫截面圖 V-V

Cross-section plan V-V

- B.L. 發展項目的界線 Boundary of the Development
- 毗連建築物的一段緊急消防通道 / 車路為香港主水平基準以上142.15米至142.51米。
- 毗連建築物的一段龍駒道為香港主水平基準以上139.85米至140.53米。
- - - - - 虛線為最低住宅樓層水平。
- The part of Emergency Vehicle Access (E.V.A) / driveway adjacent to the building is 142.15 metres to 142.51 metres above Hong Kong Principal Datum (HKPD).
- The part of Lung Kui Road adjacent to the building is 139.85 metres to 140.53 metres above Hong Kong Principal Datum (HKPD).
- - - - - Dotted line denotes the lowest residential floor.

索引圖 Key Plan

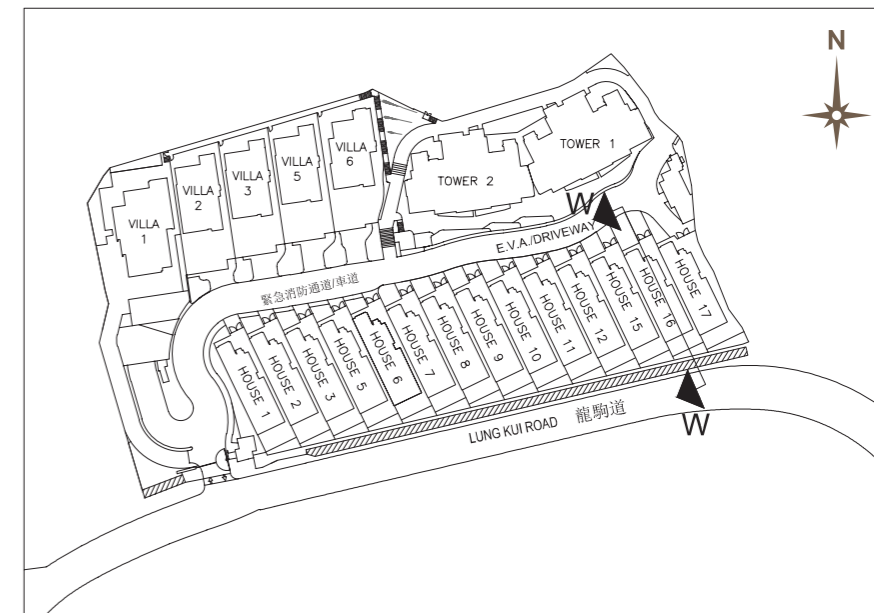


19 發展項目中的建築物的橫截面圖 CROSS-SECTION PLAN OF BUILDING IN THE DEVELOPMENT

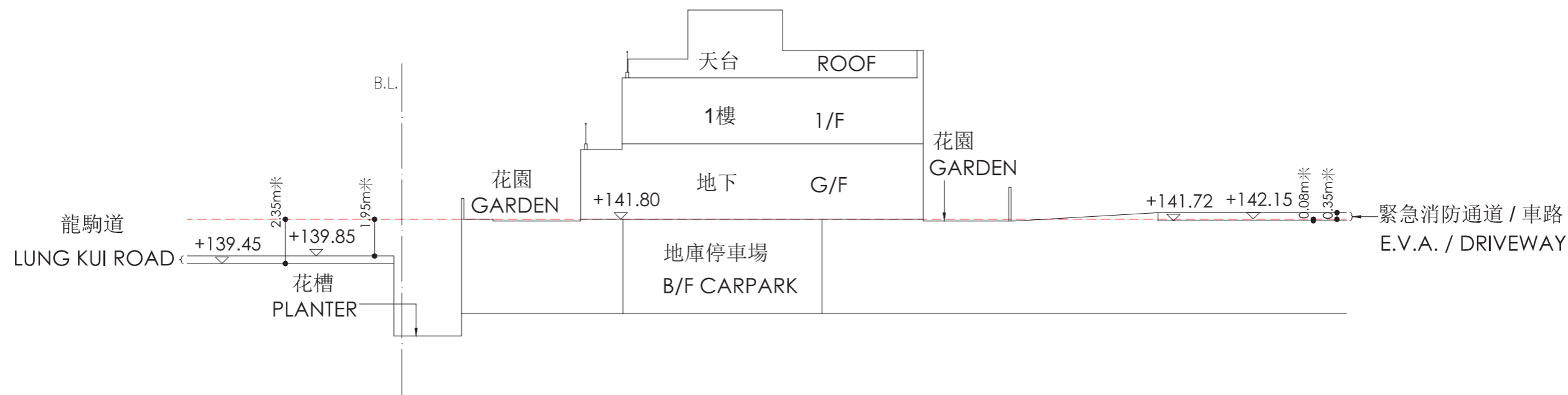
橫截面圖 W-W Cross-section plan W-W

- B.L. 發展項目的界線 Boundary of the Development
- 毗連建築物的一段緊急消防通道 / 車路為香港主水平基準以上141.72米至142.15米。
- 毗連建築物的一段龍駒道為香港主水平基準以上139.45米至139.85米。
- - - - - 虛線為最低住宅樓層水平。
- The part of Emergency Vehicle Access (E.V.A) / driveway adjacent to the building is 141.72 metres to 142.15 metres above Hong Kong Principal Datum (HKPD).
- The part of Lung Kui Road adjacent to the building is 139.45 metres to 139.85 metres above Hong Kong Principal Datum (HKPD).
- - - - - Dotted line denotes the lowest residential floor.

索引圖 Key Plan



洋房 16
HOUSE 16



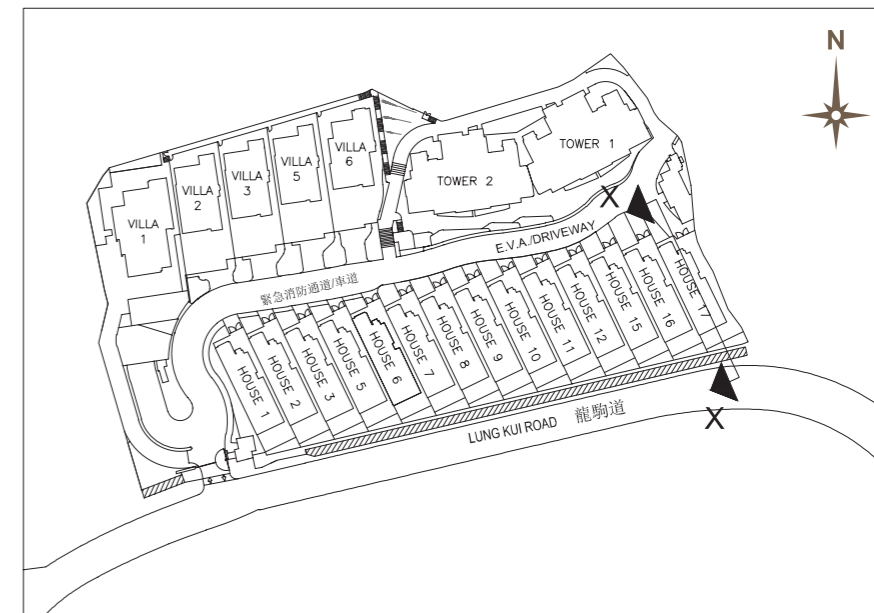
19 發展項目中的建築物的橫截面圖 CROSS-SECTION PLAN OF BUILDING IN THE DEVELOPMENT

橫截面圖 X-X

Cross-section plan X-X

- B.L. 發展項目的界線 Boundary of the Development
- 毗連建築物的一段緊急消防通道 / 車路為香港主水平基準以上141.50米至141.72米。
- 毗連建築物的一段龍駒道為香港主水平基準以上138.95米至139.45米。
- ----- 虛線為最低住宅樓層水平。
- The part of Emergency Vehicle Access (E.V.A) / driveway adjacent to the building is 141.50 metres to 141.72 metres above Hong Kong Principal Datum (HKPD).
- The part of Lung Kui Road adjacent to the building is 138.95 metres to 139.45 metres above Hong Kong Principal Datum (HKPD).
- ----- Dotted line denotes the lowest residential floor.

索引圖 Key Plan



洋房 17
HOUSE 17

